



CVS # 8940 COLD

Address: 1688 WESTCHESTER AVE | City: BRONX | State: NY

Chain/StoreNumber: CVS - EAST 8940

Reset Name: 2019 SPRING

Planogram Name: 8940_3_DOOR_COLD

Segment # 1 : 1_4 DEPTH: 27 In WIDTH: 23 In DISTANCE FROM TOP OF BASE SHELF TO BOTTOM OF SHELF:0.00 In

POS #	FAC	UPC	NAME	CASES	CAPACITY	UNITS HIGH	Category
1	1	78615000014	STELLA ARTOIS 12/11.2 BTL	2.0	4	1	ABOVE PREMIUM
2	1	7289000159	HEINEKEN LIGHT 12/12 BTL	2.0	4	1	ABOVE PREMIUM
3	1	7289000016	HEINEKEN 12/12 BTL	2.0	4	1	ABOVE PREMIUM

Segment # 1 : 1_3 DEPTH: 22 In WIDTH: 23 In DISTANCE FROM TOP OF BASE SHELF TO BOTTOM OF SHELF:21.25 In

POS #	FAC	UPC	NAME	CASES	CAPACITY	UNITS HIGH	Category
1	1	78615000001	STELLA ARTOIS 6/11.2 BTL	0.8	3	1	ABOVE PREMIUM
2	1	18195400002	PERONI 6/11.2 BTL	0.8	3	1	ABOVE PREMIUM
3	1	7289000158	HEINEKEN LIGHT 6/12 BTL	0.8	3	1	ABOVE PREMIUM
4	1	7289000011	HEINEKEN 6/12 BTL	0.8	3	1	ABOVE PREMIUM

Segment # 1 : 1_2 DEPTH: 22 In WIDTH: 23 In DISTANCE FROM TOP OF BASE SHELF TO BOTTOM OF SHELF:32.25 In

POS #	FAC	UPC	NAME	CASES	CAPACITY	UNITS HIGH	Category
1	1	7199009511	BLUE MOON BELGIAN WHITE 6/12 BTL	0.5	2	1	ABOVE PREMIUM
2	1	7199009532	BLUE MOON SEASONAL 6/12 BTL	0.5	2	1	ABOVE PREMIUM
3	1	8769230050	SAMUEL ADAMS SEASONAL 6/12 BTL (A)	0.8	3	1	ABOVE PREMIUM
4	1	63598554890	WHITE CLAW VARIETY PACK 12/12 CAN	1.0	2	1	ABOVE PREMIUM

Segment # 1 : 1_1 DEPTH: 22 In WIDTH: 23 In DISTANCE FROM TOP OF BASE SHELF TO BOTTOM OF SHELF:43.25 In

POS #	FAC	UPC	NAME	CASES	CAPACITY	UNITS HIGH	Category
1	1	3061300053	BROOKLYN SEASONAL 6/12 BTL	0.5	2	1	ABOVE PREMIUM
2	1	3061300001	BROOKLYN LAGER 6/12 BTL	0.5	2	1	ABOVE PREMIUM
3	1	3354400013	CORONA REFRESCA VARIETY 12/12 CAN	1.0	2	1	ABOVE PREMIUM
4	1	3410051681	CAPE LINE VARIETY PACK 12/12 CAN	1.0	2	1	ABOVE PREMIUM

Segment # 2 : 2_4 DEPTH: 27 In WIDTH: 23 In DISTANCE FROM TOP OF BASE SHELF TO BOTTOM OF SHELF:0.00 In

POS #	FAC	UPC	NAME	CASES	CAPACITY	UNITS HIGH	Category
1	1	8066095675	CORONA LIGHT 12/12 BTL	1.0	2	1	ABOVE PREMIUM
2	1	8066095615	CORONA 12/12 BTL	1.0	2	1	ABOVE PREMIUM
3	1	8066095695	CORONA 12/12 CAN	1.5	3	1	ABOVE PREMIUM

Segment # 2 : 2_3 DEPTH: 22 In WIDTH: 23 In DISTANCE FROM TOP OF BASE SHELF TO BOTTOM OF SHELF:14.75 In

POS #	FAC	UPC	NAME	CASES	CAPACITY	UNITS HIGH	Category
1	1	3354495042	CORONA PREMIER 12/12 BTL	1.0	2	1	ABOVE PREMIUM
2	1	7231123021	SOL 12/12 BTL	1.0	2	1	ABOVE PREMIUM
3	1	1820005990	MICHELOB ULTRA 12/12 BTL	1.0	2	1	ABOVE PREMIUM

Segment # 2 : 2_2 DEPTH: 22 In WIDTH: 23 In DISTANCE FROM TOP OF BASE SHELF TO BOTTOM OF SHELF:26.75 In

POS #	FAC	UPC	NAME	CASES	CAPACITY	UNITS HIGH	Category
1	1	8066095605	CORONA 6/12 BTL	0.5	2	1	ABOVE PREMIUM
2	1	8066095625	CORONA LIGHT 6/12 BTL	0.5	2	1	ABOVE PREMIUM
3	1	8066095755	MODELO ESPECIAL 6/12 CAN	1.0	4	1	ABOVE PREMIUM



CVS # 8940 COLD

Address: 1688 WESTCHESTER AVE | City: BRONX | State: NY

Chain/StoreNumer: CVS - EAST 8940

Reset Name: 2019 SPRING

Planogram Name: 8940_3_DOOR_COLD

4 1 8066095715 MODELO ESPECIAL 12/12 CAN 1.0 2 1 ABOVE PREMIUM

Segment # 2 : 2_1 DEPTH: 22 in WIDTH: 23 in DISTANCE FROM TOP OF BASE SHELF TO BOTTOM OF SHELF:38.25 in

POS #	FAC	UPC	NAME	CASES	CAPACITY	UNITS HIGH	Category
1	1	8769282102	ANGRY ORCHARD CRISP APPLE 6/12 BTL	0.8	3	1	ABOVE PREMIUM
2	1	78615000036	HOEGAARDEN WHITE 6/11.2 BTL	0.8	3	1	ABOVE PREMIUM
3	1	8066095785	MODELO NEGRA 6/12 BTL	0.5	2	1	ABOVE PREMIUM
4	1	8066095765	MODELO ESPECIAL 6/12 BTL	0.5	2	1	ABOVE PREMIUM

Segment # 3 : 3_4 DEPTH: 27 in WIDTH: 23 in DISTANCE FROM TOP OF BASE SHELF TO BOTTOM OF SHELF:0.00 in

POS #	FAC	UPC	NAME	CASES	CAPACITY	UNITS HIGH	Category
1	1	1820053218	BUD LIGHT 18/12 CAN	3.0	3	1	PREMIUM
2	1	1820011218	BUD 18/12 CAN	3.0	3	1	PREMIUM
3	1	7199030017	COORS LIGHT 18/12 CAN	3.0	3	1	PREMIUM
4	1	3410057340	LITE 18/12 CAN	3.0	3	1	PREMIUM

Segment # 3 : 3_3 DEPTH: 22 in WIDTH: 23 in DISTANCE FROM TOP OF BASE SHELF TO BOTTOM OF SHELF:17.75 in

POS #	FAC	UPC	NAME	CASES	CAPACITY	UNITS HIGH	Category
1	1	1820053047	BUD LIGHT 12/12 CAN	1.0	2	1	PREMIUM
2	1	1820011047	BUD 12/12 CAN	1.0	2	1	PREMIUM
3	1	7199000048	COORS LIGHT 12/12 CAN	1.0	2	1	PREMIUM
4	1	3410057636	LITE 12/12 CAN	1.0	2	1	PREMIUM

Segment # 3 : 3_2 DEPTH: 22 in WIDTH: 23 in DISTANCE FROM TOP OF BASE SHELF TO BOTTOM OF SHELF:27.25 in

POS #	FAC	UPC	NAME	CASES	CAPACITY	UNITS HIGH	Category
1	1	1820020079	BUD LIGHT ORANGE 6/12 BTL	0.5	2	1	ABOVE PREMIUM
2	1	1820000833	BUD LIGHT 6/12 BTL	0.5	2	1	PREMIUM
3	1	7199030069	COORS LIGHT 12/12 BTL	1.0	2	1	PREMIUM
4	1	7143934450	ROLLING ROCK 12/12 CAN	1.0	2	1	ECONOMY

Segment # 3 : 3_1 DEPTH: 22 in WIDTH: 23 in DISTANCE FROM TOP OF BASE SHELF TO BOTTOM OF SHELF:38.25 in

POS #	FAC	UPC	NAME	CASES	CAPACITY	UNITS HIGH	Category
1	1	61300874829	ARNOLD PALMER SPIKED HALF AND HALF 1/24 CAN	0.6	7	1	ABOVE PREMIUM
2	1	7289000119	HEINEKEN 1/24 CAN	0.6	7	1	ABOVE PREMIUM
3	1	8066095643	CORONA 1/24 CAN	0.6	7	1	ABOVE PREMIUM
4	1	1820025001	BUD LIGHT 1/25 CAN	0.5	7	1	PREMIUM
5	1	1820025000	BUD 1/25 CAN	0.5	7	1	PREMIUM
6	1	7199030065	COORS LIGHT 1/24 CAN	0.6	7	1	PREMIUM
7	1	7199010071	COORS BANQUET 1/24 CAN	0.6	7	1	PREMIUM

REVERSE VIEW (ONLY IF NEEDED)





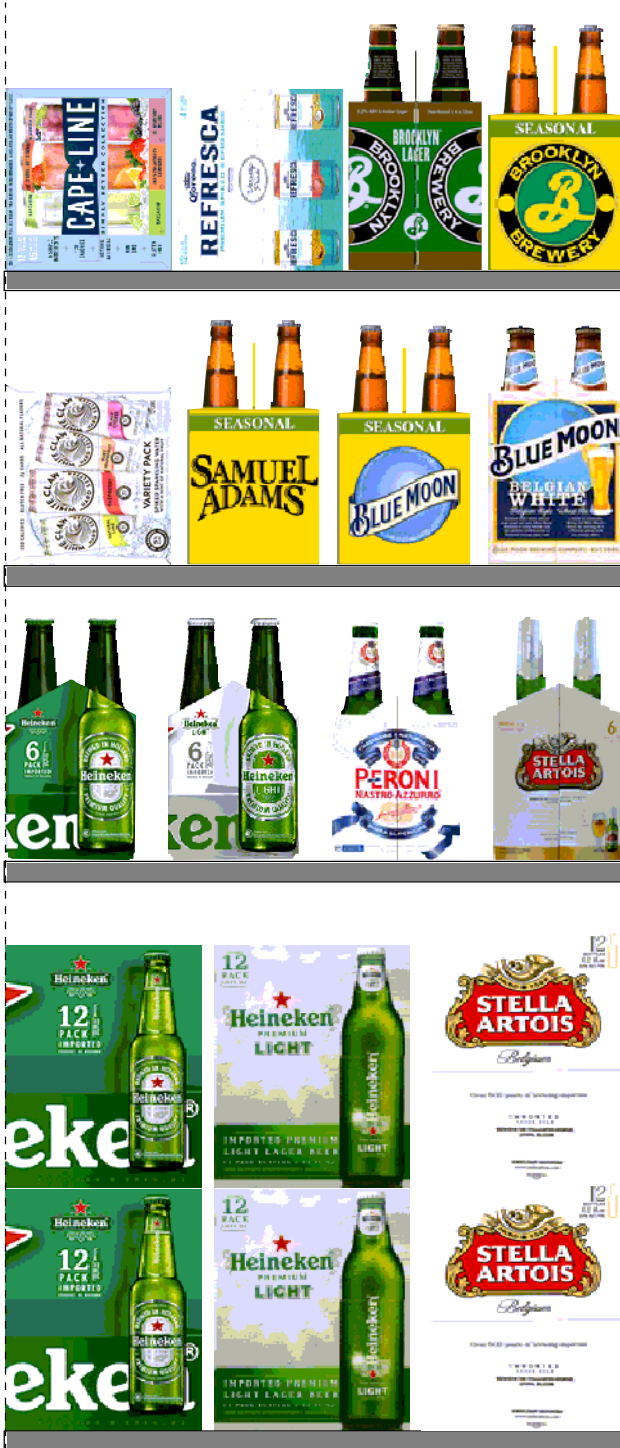
CVS # 8940 COLD

Reset Timing 2019 SPRING

Address: 1688 WESTCHESTER AVE | City: BRONX | State: NY

REVERSE VIEW (ONLY IF NEEDED)

Segment:
1 of 3



Segment # 1 : 1_4 0.00 In

POS	UPC	NAME
1	7861500014	STELLA ARTOIS 12/ 11.2 BTL
2	7289000159	HEINEKEN LIGHT 12/ 12 BTL
3	7289000016	HEINEKEN 12/ 12 BTL

Segment # 1 : 1_3 21.25 In

POS	UPC	NAME
1	7861500001	STELLA ARTOIS 6/ 11.2 BTL
2	18195400002	PERONI 6/ 11.2 BTL
3	7289000158	HEINEKEN LIGHT 6/ 12 BTL
4	7289000011	HEINEKEN 6/ 12 BTL

Segment # 1 : 1_2 32.25 In

POS	UPC	NAME
1	7199009511	BLUE MOON BELGIAN WHITE 6/ 12 BTL
2	7199009532	BLUE MOON SEASONAL 6/ 12 BTL
3	8769230050	SAMUEL ADAMS SEASONAL 6/ 12 BTL (A)
4	63598554890	WHITE CLAW VARIETY PACK 12/ 12 CAN

Segment # 1 : 1_1 43.25 In

POS	UPC	NAME
1	3061300053	BROOKLYN SEASONAL 6/ 12 BTL
2	3061300001	BROOKLYN LAGER 6/ 12 BTL
3	3354400013	CORONA REFRESCA VARIETY 12/ 12 CAN
4	3410051681	CAPE LINE VARIETY PACK 12/ 12 CAN



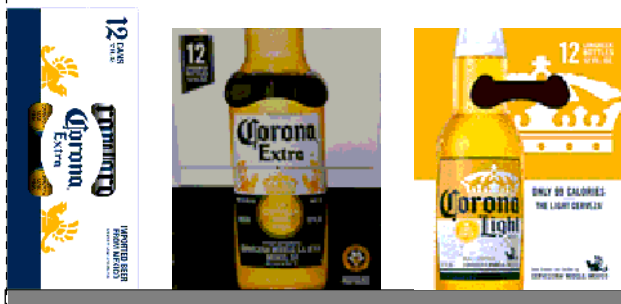
CVS # 8940 COLD

Reset Timing 2019 SPRING

Address: 1688 WESTCHESTER AVE | City: BRONX | State: NY

REVERSE VIEW (ONLY IF NEEDED)

Segment:
2 of 3



Segment # 2 : 2_4 0.00 In

POS	UPC	NAME
1	8066095675	CORONA LIGHT 12/ 12 BTL
2	8066095615	CORONA 12/ 12 BTL
3	8066095695	CORONA 12/ 12 CAN

Segment # 2 : 2_3 14.75 In

POS	UPC	NAME
1	3354495042	CORONA PREMIER 12/ 12 BTL
2	7231123021	SOL 12/ 12 BTL
3	1820005990	MICHELOB ULTRA 12/ 12 BTL

Segment # 2 : 2_2 26.75 In

POS	UPC	NAME
1	8066095605	CORONA 6/ 12 BTL
2	8066095625	CORONA LIGHT 6/ 12 BTL
3	8066095755	MODELO ESPECIAL 6/ 12 CAN
4	8066095715	MODELO ESPECIAL 12/ 12 CAN

Segment # 2 : 2_1 38.25 In

POS	UPC	NAME
1	8769282102	ANGRY ORCHARD CRISP APPLE 6/ 12 BTL
2	78615000036	HOEGAARDEN WHITE 6/ 11.2 BTL
3	8066095785	MODELO NEGRA 6/ 12 BTL
4	8066095765	MODELO ESPECIAL 6/ 12 BTL



CVS # 8940 COLD

Reset Timing 2019 SPRING

Address: 1688 WESTCHESTER AVE | City: BRONX | State: NY

REVERSE VIEW (ONLY IF NEEDED)

Segment:
3 of 3



Segment # 3 : 3_4 0.00 In

POS	UPC	NAME
1	1820053218	BUD LIGHT 18/ 12 CAN
2	1820011218	BUD 18/ 12 CAN
3	7199030017	COORS LIGHT 18/ 12 CAN
4	3410057340	LITE 18/ 12 CAN

Segment # 3 : 3_3 17.75 In

POS	UPC	NAME
1	1820053047	BUD LIGHT 12/ 12 CAN
2	1820011047	BUD 12/ 12 CAN
3	7199000048	COORS LIGHT 12/ 12 CAN
4	3410057636	LITE 12/ 12 CAN

Segment # 3 : 3_2 27.25 In

POS	UPC	NAME
1	1820020079	BUD LIGHT ORANGE 6/ 12 BTL
2	1820000833	BUD LIGHT 6/ 12 BTL
3	7199030069	COORS LIGHT 12/ 12 BTL
4	7143934450	ROLLING ROCK 12/ 12 CAN

Segment # 3 : 3_1 38.25 In

POS	UPC	NAME
1	61300874829	ARNOLD PALMER SPIKED HALF AND HALF 1/24 CAN
2	7289000119	HEINEKEN 1/24 CAN
3	8066095643	CORONA 1/24 CAN
4	1820025001	BUD LIGHT 1/25 CAN
5	1820025000	BUD 1/25 CAN
6	7199030065	COORS LIGHT 1/24 CAN
7	7199010071	COORS BANQUET 1/24 CAN



CVS # 8940 COLD

Address: 1688 WESTCHESTER AVE | City: BRONX | State: NY

Chain/StoreNumer: CVS - EAST 8940

Reset Name: 2019 SPRING

Planogram Name: 8940_3_DOOR_COLD

CVS PHARMA... Store # 8940 H: 4 ft 6.00 in W: 5 ft 9.00 in D: 2 ft # of segments: 3

Name: 1_1 W:23.00 in D:22.00 in Avail Space: 0.66 in Ht Space: 10.00 in

ID	UPC	Barcode	Name	Category	HFacings	Orientation	Units
2638	3061300053		BROOKLYN SEASONAL 6/12 BTL	ABOVE PREMIUM	1	Side	2
2616	3061300001		BROOKLYN LAGER 6/12 BTL	ABOVE PREMIUM	1	Side	2
86777	3354400013		CORONA REFRESCA VARIETY...	ABOVE PREMIUM	1	Side 90	2
86788	3410051681		CAPE LINE VARIETY PACK 12/1...	ABOVE PREMIUM	1	Side 90	2

Name: 1_2 W:23.00 in D:22.00 in Avail Space: 1.91 in Ht Space: 10.25 in

ID	UPC	Barcode	Name	Category	HFacings	Orientation	Units
10180	7199009511		BLUE MOON BELGIAN WHITE 6...	ABOVE PREMIUM	1	Side	2
10190	7199009532		BLUE MOON SEASONAL 6/12 B...	ABOVE PREMIUM	1	Side	2
21995	8769230050		SAMUEL ADAMS SEASONAL 6/...	ABOVE PREMIUM	1	Side	3
45151	63598554890		WHITE CLAW VARIETY PACK 1...	ABOVE PREMIUM	1	Side 90	2

Name: 1_3 W:23.00 in D:22.00 in Avail Space: 3.46 in Ht Space: 10.25 in

ID	UPC	Barcode	Name	Category	HFacings	Orientation	Units
14089	78615000001		STELLA ARTOIS 6/11.2 BTL	ABOVE PREMIUM	1	Side	3
568	18195400002		PERONI 6/11.2 BTL	ABOVE PREMIUM	1	Side	3
11341	7289000158		HEINEKEN LIGHT 6/12 BTL	ABOVE PREMIUM	1	Side	3
11298	7289000011		HEINEKEN 6/12 BTL	ABOVE PREMIUM	1	Side	3

Name: 1_4 W:23.00 in D:27.00 in Avail Space: 0.87 in Ht Space: 20.50 in

ID	UPC	Barcode	Name	Category	HFacings	Orientation	Units
14094	78615000014		STELLA ARTOIS 12/11.2 BTL	ABOVE PREMIUM	1	Side	4
11342	7289000159		HEINEKEN LIGHT 12/12 BTL	ABOVE PREMIUM	1	Side	4



CVS # 8940 COLD

Address: 1688 WESTCHESTER AVE | City: BRONX | State: NY

Chain/StoreNumer: CVS - EAST 8940

Reset Name: 2019 SPRING

Planogram Name: 8940_3_DOOR_COLD

11300	7289000016		HEINEKEN 12/12 BTL	ABOVE PREMIUM	1	Side	4
-------	------------	--	--------------------	---------------	---	------	---

Name: 2_1 W:23.00 in D:22.00 in Avail Space: 0.86 in Ht Space: 15.00 in

ID	UPC	Barcode	Name	Category	HFacings	Orientation	Units
22090	8769282102		ANGRY ORCHARD CRISP APP...	ABOVE PREMIUM	1	Side	3
14100	78615000036		HOEGAARDEN WHITE 6/11.2 B...	ABOVE PREMIUM	1	Side	3
15448	8066095785		MODELO NEGRA 6/12 BTL	ABOVE PREMIUM	1	Side	2
15442	8066095765		MODELO ESPECIAL 6/12 BTL	ABOVE PREMIUM	1	Side	2

Name: 2_2 W:23.00 in D:22.00 in Avail Space: 2.26 in Ht Space: 10.75 in

ID	UPC	Barcode	Name	Category	HFacings	Orientation	Units
15400	8066095605		CORONA 6/12 BTL	ABOVE PREMIUM	1	Side	2
15408	8066095625		CORONA LIGHT 6/12 BTL	ABOVE PREMIUM	1	Side	2
15435	8066095755		MODELO ESPECIAL 6/12 CAN	ABOVE PREMIUM	1	Side	4
15429	8066095715		MODELO ESPECIAL 12/12 CAN	ABOVE PREMIUM	1	Top 90	2

Name: 2_3 W:23.00 in D:22.00 in Avail Space: 0.83 in Ht Space: 11.25 in

ID	UPC	Barcode	Name	Category	HFacings	Orientation	Units
44952	3354495042		CORONA PREMIER 12/12 BTL	ABOVE PREMIUM	1	Side	2
10790	7231123021		SOL 12/12 BTL	ABOVE PREMIUM	1	Side	2
1228	1820005990		MICHELOB ULTRA 12/12 BTL	ABOVE PREMIUM	1	Side	2

Name: 2_4 W:23.00 in D:27.00 in Avail Space: 2.57 in Ht Space: 14.00 in

ID	UPC	Barcode	Name	Category	HFacings	Orientation	Units
15416	8066095675		CORONA LIGHT 12/12 BTL	ABOVE PREMIUM	1	Side	2
15403	8066095615		CORONA 12/12 BTL	ABOVE PREMIUM	1	Side	2



CVS # 8940 COLD

Address: 1688 WESTCHESTER AVE | City: BRONX | State: NY

Chain/StoreNumer: CVS - EAST 8940

Reset Name: 2019 SPRING

Planogram Name: 8940_3_DOOR_COLD

15426	8066095695		4	CORONA 12/12 CAN	ABOVE PREMIUM	1	Top 90	3
-------	------------	--	---	------------------	---------------	---	--------	---

Name: 3_1 W:23.00 in D:22.00 in Avail Space: 2.85 in Ht Space: 15.00 in

ID	UPC	Barcode		Name	Category	HFacings	Orientation	Units
66064	61300874829		6	ARNOLD PALMER SPIKED HAL...	ABOVE PREMIUM	1	Side	7
11327	7289000119		1	HEINEKEN 1/24 CAN	ABOVE PREMIUM	1	Front	7
15415	8066095643		5	CORONA 1/24 CAN	ABOVE PREMIUM	1	Front	7
1521	1820025001		9	BUD LIGHT 1/25 CAN	PREMIUM	1	Front	7
1520	1820025000		2	BUD 1/25 CAN	PREMIUM	1	Front	7
10346	7199030065		4	COORS LIGHT 1/24 CAN	PREMIUM	1	Front	7
10243	7199010071		1	COORS BANQUET 1/24 CAN	PREMIUM	1	Front	7

Name: 3_2 W:23.00 in D:22.00 in Avail Space: 0.60 in Ht Space: 10.25 in

ID	UPC	Barcode		Name	Category	HFacings	Orientation	Units
67176	1820020079		3	BUD LIGHT ORANGE 6/12 BTL	ABOVE PREMIUM	1	Side	2
1083	1820000833		7	BUD LIGHT 6/12 BTL	PREMIUM	1	Side	2
10348	7199030069		2	COORS LIGHT 12/12 BTL	PREMIUM	1	Side	2
9886	7143934450		8	ROLLING ROCK 12/12 CAN	ECONOMY	1	Side	2

Name: 3_3 W:23.00 in D:22.00 in Avail Space: 2.93 in Ht Space: 8.75 in

ID	UPC	Barcode		Name	Category	HFacings	Orientation	Units
1659	1820053047		0	BUD LIGHT 12/12 CAN	PREMIUM	1	Side	2
1297	1820011047		4	BUD 12/12 CAN	PREMIUM	1	Side	2
10164	7199000048		6	COORS LIGHT 12/12 CAN	PREMIUM	1	Side	2



CVS # 8940 COLD

Address: 1688 WESTCHESTER AVE | City: BRONX | State: NY





Chain/StoreNumer: CVS - EAST 8940

Reset Name: 2019 SPRING

Planogram Name: 8940_3_DOOR_COLD

3579	3410057636	0		3	LITE 12/12 CAN	PREMIUM	1	Side	2
------	------------	---	---	---	----------------	---------	---	------	---

Name: 3_4 W:23.00 in D:27.00 in Avail Space: 2.92 in Ht Space: 17.00 in

ID	UPC	Barcode	Name	Category	HFacings	Orientation	Units		
1667	1820053218	0		4	BUD LIGHT 18/12 CAN	PREMIUM	1	Top 90	3
1307	1820011218	0		8	BUD 18/12 CAN	PREMIUM	1	Top 90	3
10329	7199030017	0		3	COORS LIGHT 18/12 CAN	PREMIUM	1	Top 90	3
3552	3410057340	0		9	LITE 18/12 CAN	PREMIUM	1	Top 90	3