





CVS # 2812 COLD

Address: 1070 FLATBUSH AVE | City: BROOKLYN | State: NY

Chain/StoreNumer: CVS - EAST 2812

Reset Name: 2019 SPRING

Planogram Name: 2812_3_DOOR_COLD

| Segment # 1 | | : 1_4 | | DEPTH: 22 in | WIDTH: 24 in | DISTANCE FROM TOP OF BASE SHELF TO BOTTOM OF SHELF:0.25 in | | |
|-------------|-----|------------|---------------------------|--------------|--------------|--|---------------|--|
| POS # | FAC | UPC | NAME | CASES | CAPACITY | UNITS HIGH | Category | |
| 1 | 1 | 3354495042 | CORONA PREMIER 12/12 BTL | 1.0 | 2 | 1 | ABOVE PREMIUM | |
| 2 | 1 | 8066095675 | CORONA LIGHT 12/12 BTL | 1.0 | 2 | 1 | ABOVE PREMIUM | |
| 3 | 1 | 3354495053 | CORONA FAMILIAR 12/12 BTL | 1.0 | 2 | 1 | ABOVE PREMIUM | |

| Segment # 1 | | : 1_3 | | DEPTH: 22 in | WIDTH: 24 in | DISTANCE FROM TOP OF BASE SHELF TO BOTTOM OF SHELF:17.25 in | | |
|-------------|-----|------------|---------------------------|--------------|--------------|---|---------------|--|
| POS # | FAC | UPC | NAME | CASES | CAPACITY | UNITS HIGH | Category | |
| 1 | 1 | 8066095615 | CORONA 12/12 BTL | 1.0 | 2 | 1 | ABOVE PREMIUM | |
| 2 | 1 | 8066095605 | CORONA 6/12 BTL | 0.5 | 2 | 1 | ABOVE PREMIUM | |
| 3 | 1 | 8066095695 | CORONA 12/12 CAN | 1.0 | 2 | 1 | ABOVE PREMIUM | |
| 4 | 1 | 8066095715 | MODELO ESPECIAL 12/12 CAN | 1.0 | 2 | 1 | ABOVE PREMIUM | |

| Segment # 1 | | : 1_2 | | DEPTH: 22 in | WIDTH: 24 in | DISTANCE FROM TOP OF BASE SHELF TO BOTTOM OF SHELF:30.75 in | | |
|-------------|-----|------------|------------------------------------|--------------|--------------|---|---------------|--|
| POS # | FAC | UPC | NAME | CASES | CAPACITY | UNITS HIGH | Category | |
| 1 | 1 | 7231123021 | SOL 12/12 BTL | 1.0 | 2 | 1 | ABOVE PREMIUM | |
| 2 | 1 | 8769282102 | ANGRY ORCHARD CRISP APPLE 6/12 BTL | 0.8 | 3 | 1 | ABOVE PREMIUM | |
| 3 | 1 | 8066095755 | MODELO ESPECIAL 6/12 CAN | 1.0 | 4 | 1 | ABOVE PREMIUM | |
| 4 | 1 | 8066095765 | MODELO ESPECIAL 6/12 BTL | 0.5 | 2 | 1 | ABOVE PREMIUM | |

| Segment # 1 | | : 1_1 | | DEPTH: 22 in | WIDTH: 24 in | DISTANCE FROM TOP OF BASE SHELF TO BOTTOM OF SHELF:41.75 in | | |
|-------------|-----|-------------|-----------------------------------|--------------|--------------|---|---------------|--|
| POS # | FAC | UPC | NAME | CASES | CAPACITY | UNITS HIGH | Category | |
| 1 | 1 | 3354400013 | CORONA REFRESCA VARIETY 12/12 CAN | 1.0 | 2 | 1 | ABOVE PREMIUM | |
| 2 | 1 | 63598554890 | WHITE CLAW VARIETY PACK 12/12 CAN | 1.0 | 2 | 1 | ABOVE PREMIUM | |
| 3 | 1 | 3410051681 | CAPE LINE VARIETY PACK 12/12 CAN | 1.0 | 2 | 1 | ABOVE PREMIUM | |
| 4 | 1 | 8200072385 | SMIRNOFF ICE ORIGINAL 6/11.2 BTL | 0.5 | 2 | 1 | ABOVE PREMIUM | |

| Segment # 2 | | : 2_6 | | DEPTH: 22 in | WIDTH: 24 in | DISTANCE FROM TOP OF BASE SHELF TO BOTTOM OF SHELF:0.00 in | | |
|-------------|--|-------|--|--------------|--------------|--|--|--|
|-------------|--|-------|--|--------------|--------------|--|--|--|

| Segment # 2 | | : 2_5 | | DEPTH: 22 in | WIDTH: 24 in | DISTANCE FROM TOP OF BASE SHELF TO BOTTOM OF SHELF:0.25 in | | |
|-------------|-----|------------|-------------------------------|--------------|--------------|--|---------------|--|
| POS # | FAC | UPC | NAME | CASES | CAPACITY | UNITS HIGH | Category | |
| 1 | 1 | 7289000158 | HEINEKEN LIGHT 6/12 BTL | 0.8 | 3 | 1 | ABOVE PREMIUM | |
| 2 | 1 | 8382012393 | GUINNESS EXTRA STOUT 6/12 BTL | 0.8 | 3 | 1 | ABOVE PREMIUM | |
| 3 | 1 | 8248812345 | BECKS 6/12 BTL | 0.5 | 2 | 1 | ABOVE PREMIUM | |
| 4 | 1 | 1820005990 | MICHELOB ULTRA 12/12 BTL | 1.0 | 2 | 1 | ABOVE PREMIUM | |

| Segment # 2 | | : 2_4 | | DEPTH: 22 in | WIDTH: 24 in | DISTANCE FROM TOP OF BASE SHELF TO BOTTOM OF SHELF:10.25 in | | |
|-------------|-----|-------------|---------------------------|--------------|--------------|---|---------------|--|
| POS # | FAC | UPC | NAME | CASES | CAPACITY | UNITS HIGH | Category | |
| 1 | 1 | 7289000011 | HEINEKEN 6/12 BTL | 0.8 | 3 | 1 | ABOVE PREMIUM | |
| 2 | 1 | 18195400002 | PERONI 6/11.2 BTL | 0.8 | 3 | 1 | ABOVE PREMIUM | |
| 3 | 1 | 78615000014 | STELLA ARTOIS 12/11.2 BTL | 1.0 | 2 | 1 | ABOVE PREMIUM | |
| 4 | 1 | 78615000001 | STELLA ARTOIS 6/11.2 BTL | 0.8 | 3 | 1 | ABOVE PREMIUM | |

| Segment # 2 | | : 2_3 | | DEPTH: 22 in | WIDTH: 24 in | DISTANCE FROM TOP OF BASE SHELF TO BOTTOM OF SHELF:20.75 in | | |
|-------------|--|-------|--|--------------|--------------|---|--|--|
|-------------|--|-------|--|--------------|--------------|---|--|--|



CVS # 2812 COLD

Address: 1070 FLATBUSH AVE | City: BROOKLYN | State: NY

Chain/StoreNumer: CVS - EAST 2812

Reset Name: 2019 SPRING

Planogram Name: 2812_3_DOOR_COLD

| POS | # FAC | UPC | NAME | CASES | CAPACITY | UNITS HIGH | Category |
|-----|-------|-------------|-------------------------------|-------|----------|------------|---------------|
| 1 | 1 | 7289000016 | HEINEKEN 12/12 BTL | 1.0 | 2 | 1 | ABOVE PREMIUM |
| 2 | 1 | 8382056793 | RED STRIPE LAGER 6/11.2 BTL | 0.5 | 2 | 1 | ABOVE PREMIUM |
| 3 | 1 | 73692011132 | GOOSE ISLAND IPA 6/12 BTL | 0.5 | 2 | 1 | ABOVE PREMIUM |
| 4 | 1 | 75452700022 | NEW BELGIUM FAT TIRE 6/12 BTL | 0.5 | 2 | 1 | ABOVE PREMIUM |

Segment # 2 : 2_2 DEPTH: 22 in WIDTH: 24 in DISTANCE FROM TOP OF BASE SHELF TO BOTTOM OF SHELF:30.75 in

| POS | # FAC | UPC | NAME | CASES | CAPACITY | UNITS HIGH | Category |
|-----|-------|------------|----------------------------------|-------|----------|------------|---------------|
| 1 | 1 | 7199009532 | BLUE MOON SEASONAL 6/12 BTL | 0.5 | 2 | 1 | ABOVE PREMIUM |
| 2 | 1 | 7199009511 | BLUE MOON BELGIAN WHITE 6/12 BTL | 0.5 | 2 | 1 | ABOVE PREMIUM |
| 3 | 1 | 3061300001 | BROOKLYN LAGER 6/12 BTL | 1.0 | 4 | 1 | ABOVE PREMIUM |
| 4 | 1 | 3061300053 | BROOKLYN SEASONAL 6/12 BTL | 0.5 | 2 | 1 | ABOVE PREMIUM |

Segment # 2 : 3_2 DEPTH: 22 in WIDTH: 24 in DISTANCE FROM TOP OF BASE SHELF TO BOTTOM OF SHELF:41.25 in

| POS | # FAC | UPC | NAME | CASES | CAPACITY | UNITS HIGH | Category |
|-----|-------|-------------|---|-------|----------|------------|---------------|
| 1 | 1 | 63598506744 | MIKES HARD BLACK CHERRY LEMONADE 6/11.2 BTL | 1.0 | 4 | 1 | ABOVE PREMIUM |
| 2 | 1 | 63598510062 | MIKES HARD LEMONADE 6/11.2 BTL | 0.5 | 2 | 1 | ABOVE PREMIUM |
| 3 | 1 | 8769230050 | SAMUEL ADAMS SEASONAL 6/12 BTL (A) | 0.8 | 3 | 1 | ABOVE PREMIUM |
| 4 | 1 | 72383000009 | LAGUNITAS IPA 6/12 BTL | 0.5 | 2 | 1 | ABOVE PREMIUM |

Segment # 3 : 3_5 DEPTH: 22 in WIDTH: 24 in DISTANCE FROM TOP OF BASE SHELF TO BOTTOM OF SHELF:0.00 in

| POS | # FAC | UPC | NAME | CASES | CAPACITY | UNITS HIGH | Category |
|-----|-------|------------|-----------------------|-------|----------|------------|----------|
| 1 | 1 | 1820011218 | BUD 18/12 CAN | 1.0 | 1 | 1 | PREMIUM |
| 2 | 1 | 7199030017 | COORS LIGHT 18/12 CAN | 1.0 | 1 | 1 | PREMIUM |
| 3 | 1 | 3410057340 | LITE 18/12 CAN | 1.0 | 1 | 1 | PREMIUM |
| 4 | 1 | 3410001509 | HIGH LIFE 12/12 BTL | 1.0 | 2 | 1 | ECONOMY |

Segment # 3 : 3_6 DEPTH: 22 in WIDTH: 24 in DISTANCE FROM TOP OF BASE SHELF TO BOTTOM OF SHELF:0.00 in

Segment # 3 : 3_4 DEPTH: 22 in WIDTH: 24 in DISTANCE FROM TOP OF BASE SHELF TO BOTTOM OF SHELF:10.25 in

| POS | # FAC | UPC | NAME | CASES | CAPACITY | UNITS HIGH | Category |
|-----|-------|------------|-----------------------|-------|----------|------------|----------|
| 1 | 1 | 1820011047 | BUD 12/12 CAN | 1.0 | 2 | 1 | PREMIUM |
| 2 | 1 | 7199000048 | COORS LIGHT 12/12 CAN | 1.0 | 2 | 1 | PREMIUM |
| 3 | 1 | 3410057636 | LITE 12/12 CAN | 1.0 | 2 | 1 | PREMIUM |
| 4 | 1 | 2210000170 | PABST 12/12 CAN | 1.0 | 2 | 1 | ECONOMY |

Segment # 3 : 3_3 DEPTH: 22 in WIDTH: 24 in DISTANCE FROM TOP OF BASE SHELF TO BOTTOM OF SHELF:20.75 in

| POS | # FAC | UPC | NAME | CASES | CAPACITY | UNITS HIGH | Category |
|-----|-------|------------|-----------------------|-------|----------|------------|----------|
| 1 | 1 | 1820053218 | BUD LIGHT 18/12 CAN | 1.0 | 1 | 1 | PREMIUM |
| 2 | 1 | 1820008981 | BUD 8/16 CAN | 0.7 | 2 | 1 | PREMIUM |
| 3 | 1 | 7199030069 | COORS LIGHT 12/12 BTL | 1.0 | 2 | 1 | PREMIUM |
| 4 | 1 | 7199000008 | COORS LIGHT 6/12 CAN | 0.5 | 2 | 1 | PREMIUM |

Segment # 3 : 3_1 DEPTH: 22 in WIDTH: 24 in DISTANCE FROM TOP OF BASE SHELF TO BOTTOM OF SHELF:30.75 in

| POS | # FAC | UPC | NAME | CASES | CAPACITY | UNITS HIGH | Category |
|-----|-------|-----|------|-------|----------|------------|----------|
|-----|-------|-----|------|-------|----------|------------|----------|



CVS # 2812 COLD

Address: 1070 FLATBUSH AVE | City: BROOKLYN | State: NY

Chain/StoreNumber: CVS - EAST 2812

Reset Name: 2019 SPRING

Planogram Name: 2812_3_DOOR_COLD

| | | | | | | | |
|---|---|------------|---------------------------|-----|---|---|---------------|
| 1 | 1 | 1820053047 | BUD LIGHT 12/12 CAN | 1.0 | 2 | 1 | PREMIUM |
| 2 | 1 | 1820000769 | BUD LIGHT 12/12 BTL | 1.0 | 2 | 1 | PREMIUM |
| 3 | 1 | 1820020079 | BUD LIGHT ORANGE 6/12 BTL | 0.5 | 2 | 1 | ABOVE PREMIUM |
| 4 | 1 | 7199030005 | COORS LIGHT 6/12 BTL | 0.5 | 2 | 1 | PREMIUM |

Segment # 3 : 2_1 DEPTH: 22 in WIDTH: 24 in DISTANCE FROM TOP OF BASE SHELF TO BOTTOM OF SHELF:41.25 in

| POS | # FAC | UPC | NAME | CASES | CAPACITY | UNITS HIGH | Category |
|-----|-------|-------------|---|-------|----------|------------|---------------|
| 1 | 1 | 61300874829 | ARNOLD PALMER SPIKED HALF AND HALF 1/24 CAN | 0.6 | 7 | 1 | ABOVE PREMIUM |
| 2 | 1 | 7289000119 | HEINEKEN 1/24 CAN | 0.6 | 7 | 1 | ABOVE PREMIUM |
| 3 | 1 | 8066095643 | CORONA 1/24 CAN | 0.6 | 7 | 1 | ABOVE PREMIUM |
| 4 | 1 | 8066095721 | MODELO ESPECIAL 1/24 CAN | 0.6 | 7 | 1 | ABOVE PREMIUM |
| 5 | 1 | 1820025000 | BUD 1/25 CAN | 0.5 | 7 | 1 | PREMIUM |
| 6 | 1 | 7199030120 | COORS LIGHT 3/24 CAN | 0.5 | 2 | 1 | PREMIUM |
| 7 | 1 | 7199030065 | COORS LIGHT 1/24 CAN | 0.6 | 7 | 1 | PREMIUM |
| 8 | 1 | 7199010071 | COORS BANQUET 1/24 CAN | 0.6 | 7 | 1 | PREMIUM |

REVERSE VIEW (ONLY IF NEEDED)





CVS # 2812 COLD

Reset Timing 2019 SPRING

Address: 1070 FLATBUSH AVE | City: BROOKLYN | State: NY

REVERSE VIEW (ONLY IF NEEDED)

Segment:
1 of 3



Segment # 1 : 1_4 0.25 In

| POS | UPC | NAME |
|-----|------------|----------------------------|
| 1 | 3354495042 | CORONA PREMIER 12/ 12 BTL |
| 2 | 8066095675 | CORONA LIGHT 12/ 12 BTL |
| 3 | 3354495053 | CORONA FAMILIAR 12/ 12 BTL |

Segment # 1 : 1_3 17.25 In

| POS | UPC | NAME |
|-----|------------|----------------------------|
| 1 | 8066095615 | CORONA 12/ 12 BTL |
| 2 | 8066095605 | CORONA 6/ 12 BTL |
| 3 | 8066095695 | CORONA 12/ 12 CAN |
| 4 | 8066095715 | MODELO ESPECIAL 12/ 12 CAN |

Segment # 1 : 1_2 30.75 In

| POS | UPC | NAME |
|-----|------------|-------------------------------------|
| 1 | 7231123021 | SOL 12/ 12 BTL |
| 2 | 8769282102 | ANGRY ORCHARD CRISP APPLE 6/ 12 BTL |
| 3 | 8066095755 | MODELO ESPECIAL 6/ 12 CAN |
| 4 | 8066095765 | MODELO ESPECIAL 6/ 12 BTL |

Segment # 1 : 1_1 41.75 In

| POS | UPC | NAME |
|-----|-------------|------------------------------------|
| 1 | 3354400013 | CORONA REFRESCA VARIETY 12/ 12 CAN |
| 2 | 63598554890 | WHITE CLAW VARIETY PACK 12/ 12 CAN |
| 3 | 3410051681 | CAPE LINE VARIETY PACK 12/ 12 CAN |
| 4 | 8200072385 | SMIRNOFF ICE ORIGINAL 6/ 11.2 BTL |



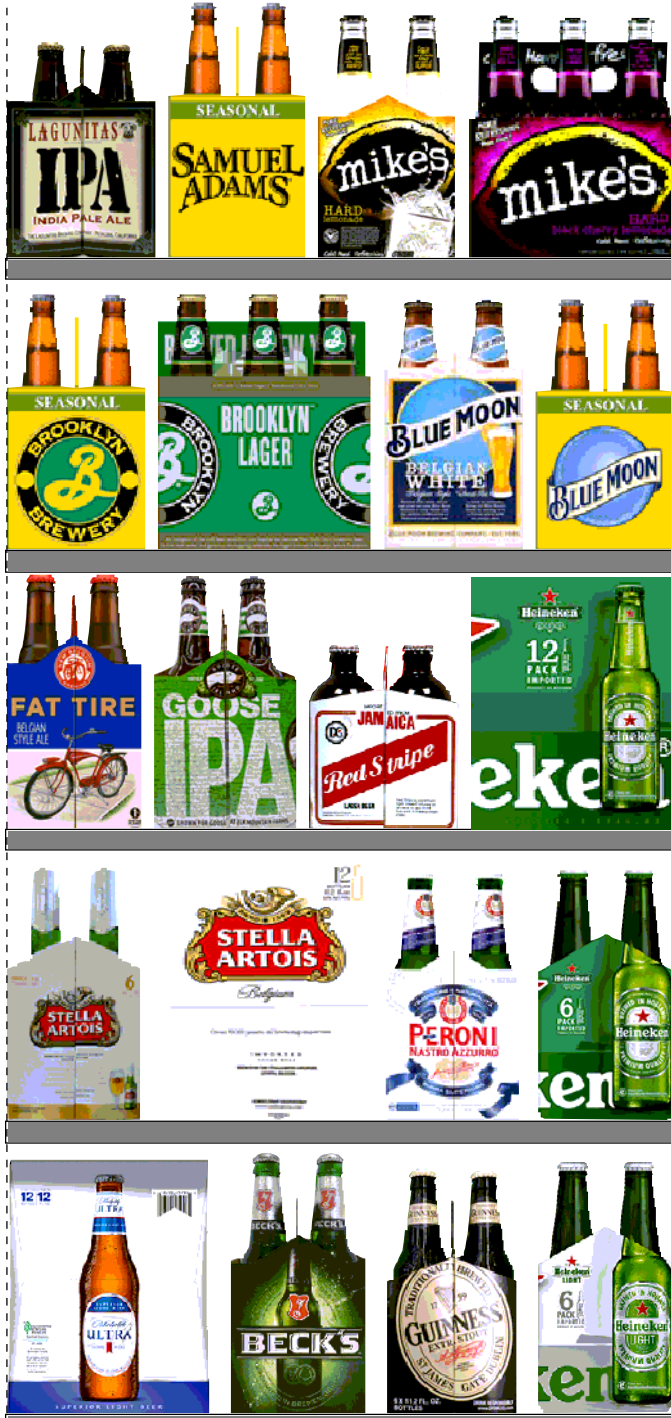
CVS # 2812 COLD

Reset Timing 2019 SPRING

Address: 1070 FLATBUSH AVE | City: BROOKLYN | State: NY

REVERSE VIEW (ONLY IF NEEDED)

Segment:
2 of 3



Segment # 2 : 2_6 0.00 In

Segment # 2 : 2_5 0.25 In

| POS | UPC | NAME |
|-----|------------|--------------------------------|
| 1 | 7289000158 | HEINEKEN LIGHT 6/ 12 BTL |
| 2 | 8382012393 | GUINNESS EXTRA STOUT 6/ 12 BTL |
| 3 | 8248812345 | BECKS 6/ 12 BTL |
| 4 | 1820005990 | MICHELOB ULTRA 12/ 12 BTL |

Segment # 2 : 2_4 10.25 In

| POS | UPC | NAME |
|-----|-------------|----------------------------|
| 1 | 7289000011 | HEINEKEN 6/ 12 BTL |
| 2 | 18195400002 | PERONI 6/ 11.2 BTL |
| 3 | 78615000014 | STELLA ARTOIS 12/ 11.2 BTL |
| 4 | 78615000001 | STELLA ARTOIS 6/ 11.2 BTL |

Segment # 2 : 2_3 20.75 In

| POS | UPC | NAME |
|-----|-------------|--------------------------------|
| 1 | 7289000016 | HEINEKEN 12/ 12 BTL |
| 2 | 8382056793 | RED STRIPE LAGER 6/ 11.2 BTL |
| 3 | 73692011132 | GOOSE ISLAND IPA 6/ 12 BTL |
| 4 | 75452700022 | NEW BELGIUM FAT TIRE 6/ 12 BTL |

Segment # 2 : 2_2 30.75 In

| POS | UPC | NAME |
|-----|------------|-----------------------------------|
| 1 | 7199009532 | BLUE MOON SEASONAL 6/ 12 BTL |
| 2 | 7199009511 | BLUE MOON BELGIAN WHITE 6/ 12 BTL |
| 3 | 3061300001 | BROOKLYN LAGER 6/ 12 BTL |
| 4 | 3061300053 | BROOKLYN SEASONAL 6/ 12 BTL |

Segment # 2 : 3_2 41.25 In

| POS | UPC | NAME |
|-----|-------------|--|
| 1 | 63598506744 | MIKES HARD BLACK CHERRY LEMONADE 6/ 11.2 BTL |
| 2 | 63598510062 | MIKES HARD LEMONADE 6/ 11.2 BTL |
| 3 | 87692300050 | SAMUEL ADAMS SEASONAL 6/ 12 BTL (A) |
| 4 | 72383000009 | LAGUNITAS IPA 6/ 12 BTL |



CVS # 2812 COLD

Reset Timing 2019 SPRING

Address: 1070 FLATBUSH AVE | City: BROOKLYN | State: NY

REVERSE VIEW (ONLY IF NEEDED)

Segment:
3 of 3



Segment # 3 : 3_5 0.00 In

| POS | UPC | NAME |
|-----|------------|------------------------|
| 1 | 1820011218 | BUD 18/ 12 CAN |
| 2 | 7199030017 | COORS LIGHT 18/ 12 CAN |
| 3 | 3410057340 | LITE 18/ 12 CAN |
| 4 | 3410001509 | HIGH LIFE 12/ 12 BTL |

Segment # 3 : 3_6 0.00 In

Segment # 3 : 3_4 10.25 In

| POS | UPC | NAME |
|-----|------------|------------------------|
| 1 | 1820011047 | BUD 12/ 12 CAN |
| 2 | 7199000048 | COORS LIGHT 12/ 12 CAN |
| 3 | 3410057636 | LITE 12/ 12 CAN |
| 4 | 2210000170 | PABST 12/ 12 CAN |

Segment # 3 : 3_3 20.75 In

| POS | UPC | NAME |
|-----|------------|------------------------|
| 1 | 1820053218 | BUD LIGHT 18/ 12 CAN |
| 2 | 1820008981 | BUD 8/ 16 CAN |
| 3 | 7199030069 | COORS LIGHT 12/ 12 BTL |
| 4 | 7199000008 | COORS LIGHT 6/ 12 CAN |

Segment # 3 : 3_1 30.75 In

| POS | UPC | NAME |
|-----|------------|----------------------------|
| 1 | 1820053047 | BUD LIGHT 12/ 12 CAN |
| 2 | 1820000769 | BUD LIGHT 12/ 12 BTL |
| 3 | 1820020079 | BUD LIGHT ORANGE 6/ 12 BTL |
| 4 | 7199030005 | COORS LIGHT 6/ 12 BTL |

Segment # 3 : 2_1 41.25 In

| POS | UPC | NAME |
|-----|-------------|--|
| 1 | 61300874829 | ARNOLD PALMER SPIKED HALF AND HALF 1/ 24 CAN |
| 2 | 7289000119 | HEINEKEN 1/ 24 CAN |
| 3 | 8066095643 | CORONA 1/ 24 CAN |
| 4 | 8066095721 | MODELO ESPECIAL 1/ 24 CAN |
| 5 | 1820025000 | BUD 1/ 25 CAN |
| 6 | 7199030120 | COORS LIGHT 3/ 24 CAN |
| 7 | 7199030065 | COORS LIGHT 1/ 24 CAN |
| 8 | 7199010071 | COORS BANQUET 1/ 24 CAN |



CVS # 2812 COLD

Address: 1070 FLATBUSH AVE | City: BROOKLYN | State: NY

Chain/StoreNumer: CVS - EAST 2812

Reset Name: 2019 SPRING

Planogram Name: 2812_3_DOOR_COLD

CVS PHARMA... Store # 2812 H: 4 ft 3.00 in W: 6 ft D: 1 ft 10.00 in # of segments: 3

Name: 1_1 W:24.00 in D:22.00 in Avail Space: 0.54 in Ht Space: 8.50 in

| ID | UPC | Barcode | Name | Category | HFacings | Orientation | Units |
|-------|-------------|-----------------|---------------------------------|---------------|----------|-------------|-------|
| 86777 | 3354400013 | 0 33544 00013 7 | CORONA REFRESCA VARIETY... | ABOVE PREMIUM | 1 | Side 90 | 2 |
| 45151 | 63598554890 | 6 35985 54890 4 | WHITE CLAW VARIETY PACK 1... | ABOVE PREMIUM | 1 | Side 90 | 2 |
| 86788 | 3410051681 | 0 34100 51681 9 | CAPE LINE VARIETY PACK 12/1... | ABOVE PREMIUM | 1 | Side 90 | 2 |
| 16265 | 8200072385 | 0 82000 72385 1 | SMIRNOFF ICE ORIGINAL 6/11.2... | ABOVE PREMIUM | 1 | Side | 2 |

Name: 1_2 W:24.00 in D:22.00 in Avail Space: 0.61 in Ht Space: 10.25 in

| ID | UPC | Barcode | Name | Category | HFacings | Orientation | Units |
|-------|------------|-----------------|----------------------------|---------------|----------|-------------|-------|
| 10790 | 7231123021 | 0 72311 23021 6 | SOL 12/12 BTL | ABOVE PREMIUM | 1 | Side | 2 |
| 22090 | 8769282102 | 0 87692 82102 1 | ANGRY ORCHARD CRISP APP... | ABOVE PREMIUM | 1 | Side | 3 |
| 15435 | 8066095755 | 0 80660 95755 5 | MODELO ESPECIAL 6/12 CAN | ABOVE PREMIUM | 1 | Side | 4 |
| 15442 | 8066095765 | 0 80660 95765 4 | MODELO ESPECIAL 6/12 BTL | ABOVE PREMIUM | 1 | Side | 2 |

Name: 1_3 W:24.00 in D:22.00 in Avail Space: 1.11 in Ht Space: 12.75 in

| ID | UPC | Barcode | Name | Category | HFacings | Orientation | Units |
|-------|------------|-----------------|---------------------------|---------------|----------|-------------|-------|
| 15403 | 8066095615 | 0 80660 95615 2 | CORONA 12/12 BTL | ABOVE PREMIUM | 1 | Side | 2 |
| 15400 | 8066095605 | 0 80660 95605 3 | CORONA 6/12 BTL | ABOVE PREMIUM | 1 | Side | 2 |
| 15426 | 8066095695 | 0 80660 95695 4 | CORONA 12/12 CAN | ABOVE PREMIUM | 1 | Side | 2 |
| 15429 | 8066095715 | 0 80660 95715 9 | MODELO ESPECIAL 12/12 CAN | ABOVE PREMIUM | 1 | Side | 2 |

Name: 1_4 W:24.00 in D:22.00 in Avail Space: 0.72 in Ht Space: 16.75 in

| ID | UPC | Barcode | Name | Category | HFacings | Orientation | Units |
|-------|------------|-----------------|--------------------------|---------------|----------|-------------|-------|
| 44952 | 3354495042 | 0 33544 95042 5 | CORONA PREMIER 12/12 BTL | ABOVE PREMIUM | 1 | Side | 2 |
| 15416 | 8066095675 | 0 80660 95675 6 | CORONA LIGHT 12/12 BTL | ABOVE PREMIUM | 1 | Side | 2 |



CVS # 2812 COLD

Address: 1070 FLATBUSH AVE | City: BROOKLYN | State: NY

Chain/StoreNumer: CVS - EAST 2812

Reset Name: 2019 SPRING

Planogram Name: 2812_3_DOOR_COLD

| | | | | | | | | |
|-------|------------|--|---|---------------------------|---------------|---|------|---|
| 51878 | 3354495053 | | 1 | CORONA FAMILIAR 12/12 BTL | ABOVE PREMIUM | 1 | Side | 2 |
|-------|------------|--|---|---------------------------|---------------|---|------|---|

Name: 3_2 W:24.00 in D:22.00 in Avail Space: 1.30 in Ht Space: 9.00 in

| ID | UPC | Barcode | Name | Category | HFacings | Orientation | Units |
|-------|-------------|---------|------------------------------|---------------|----------|-------------|-------|
| 6402 | 63598506744 | | MIKES HARD BLACK CHERRY L... | ABOVE PREMIUM | 1 | Front | 4 |
| 6413 | 63598510062 | | MIKES HARD LEMONADE 6/11.... | ABOVE PREMIUM | 1 | Side | 2 |
| 21995 | 8769230050 | | SAMUEL ADAMS SEASONAL 6/... | ABOVE PREMIUM | 1 | Side | 3 |
| 10845 | 72383000009 | | LAGUNITAS IPA 6/12 BTL | ABOVE PREMIUM | 1 | Side | 2 |

Name: 2_2 W:24.00 in D:22.00 in Avail Space: 1.32 in Ht Space: 9.75 in

| ID | UPC | Barcode | Name | Category | HFacings | Orientation | Units |
|-------|------------|---------|------------------------------|---------------|----------|-------------|-------|
| 10190 | 7199009532 | | BLUE MOON SEASONAL 6/12 B... | ABOVE PREMIUM | 1 | Side | 2 |
| 10180 | 7199009511 | | BLUE MOON BELGIAN WHITE 6... | ABOVE PREMIUM | 1 | Side | 2 |
| 2616 | 3061300001 | | BROOKLYN LAGER 6/12 BTL | ABOVE PREMIUM | 1 | Front | 4 |
| 2638 | 3061300053 | | BROOKLYN SEASONAL 6/12 BTL | ABOVE PREMIUM | 1 | Side | 2 |

Name: 2_3 W:24.00 in D:22.00 in Avail Space: 1.24 in Ht Space: 9.25 in

| ID | UPC | Barcode | Name | Category | HFacings | Orientation | Units |
|-------|-------------|---------|--------------------------------|---------------|----------|-------------|-------|
| 11300 | 7289000016 | | HEINEKEN 12/12 BTL | ABOVE PREMIUM | 1 | Side | 2 |
| 17348 | 8382056793 | | RED STRIPE LAGER 6/11.2 BTL | ABOVE PREMIUM | 1 | Side | 2 |
| 11951 | 73692011132 | | GOOSE ISLAND IPA 6/12 BTL | ABOVE PREMIUM | 1 | Side | 2 |
| 13009 | 75452700022 | | NEW BELGIUM FAT TIRE 6/12 B... | ABOVE PREMIUM | 1 | Side | 2 |

Name: 2_4 W:24.00 in D:22.00 in Avail Space: 1.89 in Ht Space: 9.75 in

| ID | UPC | Barcode | Name | Category | HFacings | Orientation | Units |
|-------|------------|---------|-------------------|---------------|----------|-------------|-------|
| 11298 | 7289000011 | | HEINEKEN 6/12 BTL | ABOVE PREMIUM | 1 | Side | 3 |



CVS # 2812 COLD

Address: 1070 FLATBUSH AVE | City: BROOKLYN | State: NY

Chain/StoreNumer: CVS - EAST 2812

Reset Name: 2019 SPRING

Planogram Name: 2812_3_DOOR_COLD

| | | | | | | | | | |
|-------|-------------|---|--|---|---------------------------|---------------|---|------|---|
| 568 | 18195400002 | 1 | | 2 | PERONI 6/11.2 BTL | ABOVE PREMIUM | 1 | Side | 3 |
| 14094 | 78615000014 | 7 | | 4 | STELLA ARTOIS 12/11.2 BTL | ABOVE PREMIUM | 1 | Side | 2 |
| 14089 | 78615000001 | 7 | | 4 | STELLA ARTOIS 6/11.2 BTL | ABOVE PREMIUM | 1 | Side | 3 |

Name: 2_5 W:24.00 in D:22.00 in Avail Space: 2.19 in Ht Space: 9.75 in

| ID | UPC | Barcode | Name | Category | HFacings | Orientation | Units |
|-------|------------|---------|------------------------------|---------------|----------|-------------|-------|
| 11341 | 7289000158 | | HEINEKEN LIGHT 6/12 BTL | ABOVE PREMIUM | 1 | Side | 3 |
| 17305 | 8382012393 | | GUINNESS EXTRA STOUT 6/12... | ABOVE PREMIUM | 1 | Side | 3 |
| 16693 | 8248812345 | | BECKS 6/12 BTL | ABOVE PREMIUM | 1 | Side | 2 |
| 1228 | 1820005990 | | MICHELOB ULTRA 12/12 BTL | ABOVE PREMIUM | 1 | Side | 2 |

Name: 2_6 W:24.00 in D:22.00 in Avail Space: 24.00 in Ht Space: 0.25 in

Name: 2_1 W:24.00 in D:22.00 in Avail Space: 0.95 in Ht Space: 9.00 in

| ID | UPC | Barcode | Name | Category | HFacings | Orientation | Units |
|-------|-------------|---------|-----------------------------|---------------|----------|-------------|-------|
| 66064 | 61300874829 | | ARNOLD PALMER SPIKED HAL... | ABOVE PREMIUM | 1 | Side | 7 |
| 11327 | 7289000119 | | HEINEKEN 1/24 CAN | ABOVE PREMIUM | 1 | Front | 7 |
| 15415 | 8066095643 | | CORONA 1/24 CAN | ABOVE PREMIUM | 1 | Front | 7 |
| 15431 | 8066095721 | | MODELO ESPECIAL 1/24 CAN | ABOVE PREMIUM | 1 | Front | 7 |
| 1520 | 1820025000 | | BUD 1/25 CAN | PREMIUM | 1 | Front | 7 |
| 10372 | 7199030120 | | COORS LIGHT 3/24 CAN | PREMIUM | 1 | Side | 2 |
| 10346 | 7199030065 | | COORS LIGHT 1/24 CAN | PREMIUM | 1 | Front | 7 |
| 10243 | 7199010071 | | COORS BANQUET 1/24 CAN | PREMIUM | 1 | Front | 7 |

Name: 3_1 W:24.00 in D:22.00 in Avail Space: 1.66 in Ht Space: 9.75 in



CVS # 2812 COLD

Address: 1070 FLATBUSH AVE | City: BROOKLYN | State: NY

Chain/StoreNumer: CVS - EAST 2812

Reset Name: 2019 SPRING

Planogram Name: 2812_3_DOOR_COLD

| ID | UPC | Barcode | Name | Category | HFacings | Orientation | Units |
|-------|------------|---------|---------------------------|---------------|----------|-------------|-------|
| 1659 | 1820053047 | | BUD LIGHT 12/12 CAN | PREMIUM | 1 | Side | 2 |
| 1056 | 1820000769 | | BUD LIGHT 12/12 BTL | PREMIUM | 1 | Side | 2 |
| 67176 | 1820020079 | | BUD LIGHT ORANGE 6/12 BTL | ABOVE PREMIUM | 1 | Side | 2 |
| 10322 | 7199030005 | | COORS LIGHT 6/12 BTL | PREMIUM | 1 | Side | 2 |

Name: 3_3 W:24.00 in D:22.00 in Avail Space: 1.22 in Ht Space: 9.25 in

| ID | UPC | Barcode | Name | Category | HFacings | Orientation | Units |
|-------|------------|---------|-----------------------|----------|----------|-------------|-------|
| 1667 | 1820053218 | | BUD LIGHT 18/12 CAN | PREMIUM | 1 | Side | 1 |
| 1256 | 1820008981 | | BUD 8/16 CAN | PREMIUM | 1 | Side 90 | 2 |
| 10348 | 7199030069 | | COORS LIGHT 12/12 BTL | PREMIUM | 1 | Side | 2 |
| 10155 | 7199000008 | | COORS LIGHT 6/12 CAN | PREMIUM | 1 | Side | 2 |

Name: 3_4 W:24.00 in D:22.00 in Avail Space: 3.98 in Ht Space: 9.75 in

| ID | UPC | Barcode | Name | Category | HFacings | Orientation | Units |
|-------|------------|---------|-----------------------|----------|----------|-------------|-------|
| 1297 | 1820011047 | | BUD 12/12 CAN | PREMIUM | 1 | Side | 2 |
| 10164 | 7199000048 | | COORS LIGHT 12/12 CAN | PREMIUM | 1 | Side | 2 |
| 3579 | 3410057636 | | LITE 12/12 CAN | PREMIUM | 1 | Side | 2 |
| 2241 | 2210000170 | | PABST 12/12 CAN | ECONOMY | 1 | Side | 2 |

Name: 3_6 W:24.00 in D:22.00 in Avail Space: 24.00 in Ht Space: 10.25 in

Name: 3_5 W:24.00 in D:22.00 in Avail Space: 1.49 in Ht Space: 9.75 in

| ID | UPC | Barcode | Name | Category | HFacings | Orientation | Units |
|-------|------------|---------|-----------------------|----------|----------|-------------|-------|
| 1307 | 1820011218 | | BUD 18/12 CAN | PREMIUM | 1 | Side | 1 |
| 10329 | 7199030017 | | COORS LIGHT 18/12 CAN | PREMIUM | 1 | Side | 1 |



CVS # 2812 COLD

Address: 1070 FLATBUSH AVE | City: BROOKLYN | State: NY

Chain/StoreNumer: CVS - EAST 2812

Reset Name: 2019 SPRING

Planogram Name: 2812_3_DOOR_COLD

| | | | | | | | |
|------|------------|--|---------------------|---------|---|------|---|
| 3552 | 3410057340 | | LITE 18/12 CAN | PREMIUM | 1 | Side | 1 |
| 3198 | 3410001509 | | HIGH LIFE 12/12 BTL | ECONOMY | 1 | Side | 2 |