





CVS # 2141 WARM

Address: 2925 KINGS HWY | City: BROOKLYN | State: NY

Chain/StoreNumer: CVS - EAST 2141

Reset Name: 2019 SPRING

Planogram Name: 2141_4ft_OPEN_WARM

Segment # 1 : 1_5 DEPTH: 15 in WIDTH: 48 in DISTANCE FROM TOP OF BASE SHELF TO BOTTOM OF SHELF:6.00 in

POS #	FAC	UPC	NAME	CASES	CAPACITY	UNITS HIGH	Category
1	1	7289000016	HEINEKEN 12/12 BTL	0.5	1	1	ABOVE PREMIUM
2	2	8066095615	CORONA 12/12 BTL	1.0	2	2	ABOVE PREMIUM
3	1	1820053047	BUD LIGHT 12/12 CAN	0.5	1	1	PREMIUM
4	1	1820053218	BUD LIGHT 18/12 CAN	1.0	1	1	PREMIUM
5	1	1820011218	BUD 18/12 CAN	1.0	1	1	PREMIUM
6	1	7199030017	COORS LIGHT 18/12 CAN	1.0	1	1	PREMIUM
7	1	3410057340	LITE 18/12 CAN	1.0	1	1	PREMIUM

Segment # 1 : 1_4 DEPTH: 15 in WIDTH: 48 in DISTANCE FROM TOP OF BASE SHELF TO BOTTOM OF SHELF:18.00 in

POS #	FAC	UPC	NAME	CASES	CAPACITY	UNITS HIGH	Category
1	1	78615000014	STELLA ARTOIS 12/11.2 BTL	0.5	1	1	ABOVE PREMIUM
2	1	8066095625	CORONA LIGHT 6/12 BTL	0.3	1	1	ABOVE PREMIUM
3	1	8066095695	CORONA 12/12 CAN	0.5	1	1	ABOVE PREMIUM
4	1	8066095605	CORONA 6/12 BTL	0.3	1	1	ABOVE PREMIUM
5	1	8066095757	MODELO ESPECIAL 12/12 BTL	0.5	1	1	ABOVE PREMIUM
6	1	1820011047	BUD 12/12 CAN	0.5	1	1	PREMIUM
7	1	7199000048	COORS LIGHT 12/12 CAN	0.5	1	1	PREMIUM
8	1	3410057636	LITE 12/12 CAN	0.5	1	1	PREMIUM

Segment # 1 : 1_3 DEPTH: 15 in WIDTH: 48 in DISTANCE FROM TOP OF BASE SHELF TO BOTTOM OF SHELF:29.50 in

POS #	FAC	UPC	NAME	CASES	CAPACITY	UNITS HIGH	Category
1	1	78615000001	STELLA ARTOIS 6/11.2 BTL	0.5	2	1	ABOVE PREMIUM
2	1	7289000158	HEINEKEN LIGHT 6/12 BTL	0.5	2	1	ABOVE PREMIUM
3	1	7289000011	HEINEKEN 6/12 BTL	0.5	2	1	ABOVE PREMIUM
4	1	7289000159	HEINEKEN LIGHT 12/12 BTL	0.5	1	1	ABOVE PREMIUM
5	1	8066095787	MODELO NEGRA 12/12 BTL	0.5	1	1	ABOVE PREMIUM
6	1	1820000833	BUD LIGHT 6/12 BTL	0.3	1	1	PREMIUM
7	1	1820000769	BUD LIGHT 12/12 BTL	0.5	1	1	PREMIUM
8	1	2210000170	PABST 12/12 CAN	0.5	1	1	ECONOMY

Segment # 1 : 1_2 DEPTH: 15 in WIDTH: 48 in DISTANCE FROM TOP OF BASE SHELF TO BOTTOM OF SHELF:41.00 in

POS #	FAC	UPC	NAME	CASES	CAPACITY	UNITS HIGH	Category
1	1	75452700161	NEW BELGIUM FAT TIRE 12/12 CAN	0.5	1	1	ABOVE PREMIUM
2	1	7199009511	BLUE MOON BELGIAN WHITE 6/12 BTL	0.5	2	1	ABOVE PREMIUM
3	1	7199009561	BLUE MOON MANGO WHEAT 6/12 BTL	0.5	2	1	ABOVE PREMIUM
4	1	8248812345	BECKS 6/12 BTL	0.5	2	1	ABOVE PREMIUM
5	1	8066095785	MODELO NEGRA 6/12 BTL	0.3	1	1	ABOVE PREMIUM
6	1	8248812300	BECKS 12/12 BTL	0.5	1	1	ABOVE PREMIUM
7	1	7199030069	COORS LIGHT 12/12 BTL	0.5	1	1	PREMIUM
8	2	7199030120	COORS LIGHT 3/24 CAN	0.5	2	2	PREMIUM

Segment # 1 : 1_1 DEPTH: 15 in WIDTH: 48 in DISTANCE FROM TOP OF BASE SHELF TO BOTTOM OF SHELF:52.00 in

POS #	FAC	UPC	NAME	CASES	CAPACITY	UNITS HIGH	Category
1	1	3061300001	BROOKLYN LAGER 6/12 BTL	0.3	1	1	ABOVE PREMIUM
2	1	3061300019	BROOKLYN EAST IPA 6/12 BTL	0.3	1	1	ABOVE PREMIUM
3	1	3061300053	BROOKLYN SEASONAL 6/12 BTL	0.3	1	1	ABOVE PREMIUM



CVS # 2141 WARM

Address: 2925 KINGS HWY | City: BROOKLYN | State: NY

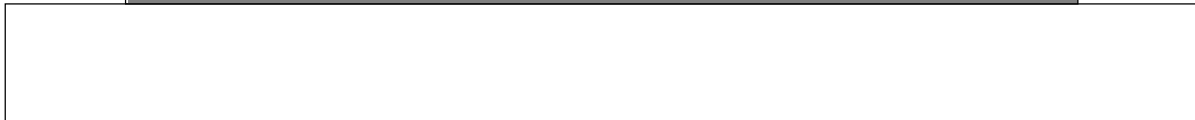
Chain/StoreNumer: CVS - EAST 2141

Reset Name: 2019 SPRING

Planogram Name: 2141_4ft_OPEN_WARM

4	1	8769230050	SAMUEL ADAMS SEASONAL 6/12 BTL (A)	0.5	2	1	ABOVE PREMIUM
5	1	63598554890	WHITE CLAW VARIETY PACK 12/12 CAN	0.5	1	1	ABOVE PREMIUM
6	1	8769282102	ANGRY ORCHARD CRISP APPLE 6/12 BTL	0.5	2	1	ABOVE PREMIUM
7	1	1820005990	MICHELOB ULTRA 12/12 BTL	0.5	1	1	ABOVE PREMIUM
8	1	3410001509	HIGH LIFE 12/12 BTL	0.5	1	1	ECONOMY

REVERSE VIEW (ONLY IF NEEDED)





CVS # 2141 WARM

Reset Timing 2019 SPRING

Address: 2925 KINGS HWY | City: BROOKLYN | State: NY

REVERSE VIEW (ONLY IF NEEDED)

Segment:
1 of 1



Segment # 1 : 1_5 6.00 in

POS	UPC	NAME
1	7289000016	HEINEKEN 12/ 12 BTL
2	8066095615	CORONA 12/ 12 BTL
3	1820053047	BUD LIGHT 12/ 12 CAN
4	1820053218	BUD LIGHT 18/ 12 CAN
5	1820011218	BUD 18/ 12 CAN
6	7199030017	COORS LIGHT 18/ 12 CAN
7	3410057340	LITE 18/ 12 CAN

Segment # 1 : 1_4 18.00 in

POS	UPC	NAME
1	78615000014	STELLA ARTOIS 12/ 11.2 BTL
2	8066095625	CORONA LIGHT 6/ 12 BTL
3	8066095695	CORONA 12/ 12 CAN
4	8066095605	CORONA 6/ 12 BTL
5	8066095757	MODELO ESPECIAL 12/ 12 BTL
6	1820011047	BUD 12/ 12 CAN
7	7199000048	COORS LIGHT 12/ 12 CAN
8	3410057636	LITE 12/ 12 CAN

Segment # 1 : 1_3 29.50 in

POS	UPC	NAME
1	78615000001	STELLA ARTOIS 6/ 11.2 BTL
2	7289000158	HEINEKEN LIGHT 6/ 12 BTL
3	7289000011	HEINEKEN 6/ 12 BTL
4	7289000159	HEINEKEN LIGHT 12/ 12 BTL
5	8066095787	MODELO NEGRA 12/ 12 BTL
6	1820000833	BUD LIGHT 6/ 12 BTL
7	1820000769	BUD LIGHT 12/ 12 BTL
8	2210000170	PABST 12/ 12 CAN

Segment # 1 : 1_2 41.00 in

POS	UPC	NAME
1	75452700161	NEW BELGIUM FAT TIRE 12/ 12 CAN
2	7199009511	BLUE MOON BELGIAN WHITE 6/ 12 BTL
3	7199009561	BLUE MOON MANGO WHEAT 6/ 12 BTL (A)
4	8248812345	BECKS 6/ 12 BTL
5	8066095785	MODELO NEGRA 6/ 12 BTL
6	8248812300	BECKS 12/ 12 BTL
7	7199030069	COORS LIGHT 12/ 12 BTL
8	7199030120	COORS LIGHT 3/ 24 CAN

Segment # 1 : 1_1 52.00 in

POS	UPC	NAME
1	3061300001	BROOKLYN LAGER 6/ 12 BTL
2	3061300019	BROOKLYN EAST IPA 6/ 12 BTL
3	3061300053	BROOKLYN SEASONAL 6/ 12 BTL
4	8769230050	SAMUEL ADAMS SEASONAL 6/ 12 BTL (A)
5	63598554890	WHITE CLAW VARIETY PACK 12/ 12 CAN
6	8769282102	ANGRY ORCHARD CRISP APPLE 6/ 12 BTL
7	1820005990	MICHELOB ULTRA 12/ 12 BTL
8	3410001509	HIGH LIFE 12/ 12 BTL



CVS # 2141 WARM

Address: 2925 KINGS HWY | City: BROOKLYN | State: NY

Chain/StoreNumer: CVS - EAST 2141

Reset Name: 2019 SPRING

Planogram Name: 2141_4ft_OPEN_WARM

CVS PHARMA... Store # 2141 H: 5 ft W: 4 ft D: 2 ft # of segments: 1

Name: 1_1 W:48.00 in D:15.00 in Avail Space: 1.67 in Ht Space: 7.00 in

ID	UPC	Barcode	Name	Category	HFacings	Orientation	Units
2616	3061300001		BROOKLYN LAGER 6/12 BTL	ABOVE PREMIUM	1	Side	1
2625	3061300019		BROOKLYN EAST IPA 6/12 BTL	ABOVE PREMIUM	1	Side	1
2638	3061300053		BROOKLYN SEASONAL 6/12 BTL	ABOVE PREMIUM	1	Side	1
21995	8769230050		SAMUEL ADAMS SEASONAL 6/...	ABOVE PREMIUM	1	Side	2
45151	63598554890		WHITE CLAW VARIETY PACK 1...	ABOVE PREMIUM	1	Side	1
22090	8769282102		ANGRY ORCHARD CRISP APP...	ABOVE PREMIUM	1	Side	2
1228	1820005990		MICHELOB ULTRA 12/12 BTL	ABOVE PREMIUM	1	Side	1
3198	3410001509		HIGH LIFE 12/12 BTL	ECONOMY	1	Side	1

Name: 1_2 W:48.00 in D:15.00 in Avail Space: 1.63 in Ht Space: 10.00 in

ID	UPC	Barcode	Name	Category	HFacings	Orientation	Units
13037	75452700161		NEW BELGIUM FAT TIRE 12/12 ...	ABOVE PREMIUM	1	Side	1
10180	7199009511		BLUE MOON BELGIAN WHITE 6...	ABOVE PREMIUM	1	Side	2
62048	7199009561		BLUE MOON MANGO WHEAT 6...	ABOVE PREMIUM	1	Side	2
16693	8248812345		BECKS 6/12 BTL	ABOVE PREMIUM	1	Side	2
15448	8066095785		MODELO NEGRA 6/12 BTL	ABOVE PREMIUM	1	Side	1
16691	8248812300		BECKS 12/12 BTL	ABOVE PREMIUM	1	Side	1
10348	7199030069		COORS LIGHT 12/12 BTL	PREMIUM	1	Side	1



CVS # 2141 WARM

Address: 2925 KINGS HWY | City: BROOKLYN | State: NY

Chain/StoreNumer: CVS - EAST 2141

Reset Name: 2019 SPRING

Planogram Name: 2141_4ft_OPEN_WARM

10372	7199030120		COORS LIGHT 3/24 CAN	PREMIUM	2	Side	2
-------	------------	--	----------------------	---------	---	------	---

Name: 1_3 W:48.00 in D:15.00 in Avail Space: 0.93 in Ht Space: 10.50 in

ID	UPC	Barcode	Name	Category	HFacings	Orientation	Units
14089	7861500001		STELLA ARTOIS 6/11.2 BTL	ABOVE PREMIUM	1	Side	2
11341	7289000158		HEINEKEN LIGHT 6/12 BTL	ABOVE PREMIUM	1	Side	2
11298	7289000011		HEINEKEN 6/12 BTL	ABOVE PREMIUM	1	Side	2
11342	7289000159		HEINEKEN LIGHT 12/12 BTL	ABOVE PREMIUM	1	Side	1
15449	8066095787		MODELO NEGRA 12/12 BTL	ABOVE PREMIUM	1	Side 90	1
1083	1820000833		BUD LIGHT 6/12 BTL	PREMIUM	1	Side	1
1056	1820000769		BUD LIGHT 12/12 BTL	PREMIUM	1	Side	1
2241	2210000170		PABST 12/12 CAN	ECONOMY	1	Top 90	1

Name: 1_4 W:48.00 in D:15.00 in Avail Space: 2.08 in Ht Space: 10.50 in

ID	UPC	Barcode	Name	Category	HFacings	Orientation	Units
14094	78615000014		STELLA ARTOIS 12/11.2 BTL	ABOVE PREMIUM	1	Side	1
15408	8066095625		CORONA LIGHT 6/12 BTL	ABOVE PREMIUM	1	Side	1
15426	8066095695		CORONA 12/12 CAN	ABOVE PREMIUM	1	Side	1
15400	8066095605		CORONA 6/12 BTL	ABOVE PREMIUM	1	Side	1
15436	8066095757		MODELO ESPECIAL 12/12 BTL	ABOVE PREMIUM	1	Side 90	1
1297	1820011047		BUD 12/12 CAN	PREMIUM	1	Side	1
10164	7199000048		COORS LIGHT 12/12 CAN	PREMIUM	1	Side	1



CVS # 2141 WARM

Address: 2925 KINGS HWY | City: BROOKLYN | State: NY

Chain/StoreNumer: CVS - EAST 2141

Reset Name: 2019 SPRING

Planogram Name: 2141_4ft_OPEN_WARM

3579	3410057636	0 34100 57636 3	LITE 12/12 CAN	PREMIUM	1	Side	1
------	------------	-----------------	----------------	---------	---	------	---

Name: 1_5 W:48.00 in D:15.00 in Avail Space: 0.13 in Ht Space: 11.00 in

ID	UPC	Barcode	Name	Category	HFacings	Orientation	Units
11300	7289000016	0 72890 00016 3	HEINEKEN 12/12 BTL	ABOVE PREMIUM	1	Side	1
15403	8066095615	0 80660 95615 2	CORONA 12/12 BTL	ABOVE PREMIUM	2	Side	2
1659	1820053047	0 18200 53047 0	BUD LIGHT 12/12 CAN	PREMIUM	1	Side	1
1667	1820053218	0 18200 53218 4	BUD LIGHT 18/12 CAN	PREMIUM	1	Side	1
1307	1820011218	0 18200 11218 8	BUD 18/12 CAN	PREMIUM	1	Side	1
10329	7199030017	0 71990 30017 3	COORS LIGHT 18/12 CAN	PREMIUM	1	Side	1
3552	3410057340	0 34100 57340 9	LITE 18/12 CAN	PREMIUM	1	Side	1





CVS # 2141 COLD

Address: 2925 KINGS HWY | City: BROOKLYN | State: NY

Chain/StoreNumer: CVS - EAST 2141

Reset Name: 2019 SPRING

Planogram Name: 2141_3_DOOR_COLD

Segment # 1		: 1_5		DEPTH: 23 in	WIDTH: 24 in	DISTANCE FROM TOP OF BASE SHELF TO BOTTOM OF SHELF:0.00 in		
POS #	FAC	UPC	NAME	CASES	CAPACITY	UNITS HIGH	Category	
1	1	78615000014	STELLA ARTOIS 12/11.2 BTL	1.0	2	1	ABOVE PREMIUM	
2	1	72890000016	HEINEKEN 12/12 BTL	1.0	2	1	ABOVE PREMIUM	
3	1	8248812300	BECKS 12/12 BTL	1.0	2	1	ABOVE PREMIUM	

Segment # 1		: 1_4		DEPTH: 23 in	WIDTH: 24 in	DISTANCE FROM TOP OF BASE SHELF TO BOTTOM OF SHELF:10.75 in		
POS #	FAC	UPC	NAME	CASES	CAPACITY	UNITS HIGH	Category	
1	1	78615000001	STELLA ARTOIS 6/11.2 BTL	1.0	4	1	ABOVE PREMIUM	
2	1	72890000011	HEINEKEN 6/12 BTL	0.8	3	1	ABOVE PREMIUM	
3	1	72890000020	HEINEKEN 12/12 CAN	1.0	2	1	ABOVE PREMIUM	
4	1	8248812345	BECKS 6/12 BTL	0.8	3	1	ABOVE PREMIUM	

Segment # 1		: 1_3		DEPTH: 23 in	WIDTH: 24 in	DISTANCE FROM TOP OF BASE SHELF TO BOTTOM OF SHELF:22.25 in		
POS #	FAC	UPC	NAME	CASES	CAPACITY	UNITS HIGH	Category	
1	1	72890000158	HEINEKEN LIGHT 6/12 BTL	0.8	3	1	ABOVE PREMIUM	
2	1	8382012393	GUINNESS EXTRA STOUT 6/12 BTL	0.8	3	1	ABOVE PREMIUM	
3	1	18195400002	PERONI 6/11.2 BTL	0.8	3	1	ABOVE PREMIUM	
4	1	75452700022	NEW BELGIUM FAT TIRE 6/12 BTL	1.0	4	1	ABOVE PREMIUM	

Segment # 1		: 1_2		DEPTH: 23 in	WIDTH: 24 in	DISTANCE FROM TOP OF BASE SHELF TO BOTTOM OF SHELF:32.75 in		
POS #	FAC	UPC	NAME	CASES	CAPACITY	UNITS HIGH	Category	
1	1	73692011132	GOOSE ISLAND IPA 6/12 BTL	0.8	3	1	ABOVE PREMIUM	
2	1	8769210012	SAMUEL ADAMS BOSTON LAGER 6/12 BTL	0.8	3	1	ABOVE PREMIUM	
3	1	8769230050	SAMUEL ADAMS SEASONAL 6/12 BTL (A)	1.0	4	1	ABOVE PREMIUM	
4	1	8378337521	SIERRA NEVADA PALE ALE 6/12 BTL	0.5	2	1	ABOVE PREMIUM	

Segment # 1		: 1_1		DEPTH: 23 in	WIDTH: 24 in	DISTANCE FROM TOP OF BASE SHELF TO BOTTOM OF SHELF:43.25 in		
POS #	FAC	UPC	NAME	CASES	CAPACITY	UNITS HIGH	Category	
1	1	3061300001	BROOKLYN LAGER 6/12 BTL	0.5	2	1	ABOVE PREMIUM	
2	1	3061300053	BROOKLYN SEASONAL 6/12 BTL	0.5	2	1	ABOVE PREMIUM	
3	1	7199009511	BLUE MOON BELGIAN WHITE 6/12 BTL	1.0	4	1	ABOVE PREMIUM	
4	1	7199009532	BLUE MOON SEASONAL 6/12 BTL	0.8	3	1	ABOVE PREMIUM	

Segment # 2		: 2_5		DEPTH: 23 in	WIDTH: 24 in	DISTANCE FROM TOP OF BASE SHELF TO BOTTOM OF SHELF:0.00 in		
POS #	FAC	UPC	NAME	CASES	CAPACITY	UNITS HIGH	Category	
1	1	8066095615	CORONA 12/12 BTL	1.0	2	1	ABOVE PREMIUM	
2	1	3354495042	CORONA PREMIER 12/12 BTL	1.0	2	1	ABOVE PREMIUM	
3	1	8066095757	MODELO ESPECIAL 12/12 BTL	0.5	1	1	ABOVE PREMIUM	

Segment # 2		: 2_4		DEPTH: 23 in	WIDTH: 24 in	DISTANCE FROM TOP OF BASE SHELF TO BOTTOM OF SHELF:11.25 in		
POS #	FAC	UPC	NAME	CASES	CAPACITY	UNITS HIGH	Category	
1	1	8066095625	CORONA LIGHT 6/12 BTL	0.8	3	1	ABOVE PREMIUM	
2	1	8066095605	CORONA 6/12 BTL	0.8	3	1	ABOVE PREMIUM	



CVS # 2141 COLD

Address: 2925 KINGS HWY | City: BROOKLYN | State: NY

Chain/StoreNumer: CVS - EAST 2141

Reset Name: 2019 SPRING

Planogram Name: 2141_3_DOOR_COLD

3	1	8066095675	CORONA LIGHT 12/12 BTL	1.0	2	1	ABOVE PREMIUM
4	1	8066095715	MODELO ESPECIAL 12/12 CAN	1.0	2	1	ABOVE PREMIUM

Segment # 2 : 2_3 DEPTH: 23 in WIDTH: 24 in DISTANCE FROM TOP OF BASE SHELF TO BOTTOM OF SHELF:22.25 in

POS #	FAC	UPC	NAME	CASES	CAPACITY	UNITS HIGH	Category
1	1	8066095695	CORONA 12/12 CAN	1.0	2	1	ABOVE PREMIUM
2	1	8066095755	MODELO ESPECIAL 6/12 CAN	1.0	4	1	ABOVE PREMIUM
3	1	8066095301	PACIFICO 6/12 BTL	0.5	2	1	ABOVE PREMIUM
4	1	8066095765	MODELO ESPECIAL 6/12 BTL	0.5	2	1	ABOVE PREMIUM

Segment # 2 : 2_2 DEPTH: 23 in WIDTH: 24 in DISTANCE FROM TOP OF BASE SHELF TO BOTTOM OF SHELF:33.25 in

POS #	FAC	UPC	NAME	CASES	CAPACITY	UNITS HIGH	Category
1	1	3354400013	CORONA REFRESCA VARIETY 12/12 CAN	1.5	3	1	ABOVE PREMIUM
2	1	8769282102	ANGRY ORCHARD CRISP APPLE 6/12 BTL	1.0	4	1	ABOVE PREMIUM
3	1	3410008716	REDDS 6/12 BTL	0.8	3	1	ABOVE PREMIUM
4	1	78615000030	LEFFE BLONDE 6/11.2 BTL	0.8	3	1	ABOVE PREMIUM

Segment # 2 : 2_1 DEPTH: 23 in WIDTH: 24 in DISTANCE FROM TOP OF BASE SHELF TO BOTTOM OF SHELF:43.75 in

POS #	FAC	UPC	NAME	CASES	CAPACITY	UNITS HIGH	Category
1	1	1820013986	SHOCK TOP BELGIAN WHITE 6/12 BTL	0.5	2	1	ABOVE PREMIUM
2	1	72383000009	LAGUNITAS IPA 6/12 BTL	1.0	4	1	ABOVE PREMIUM
3	1	63598510062	MIKES HARD LEMONADE 6/11.2 BTL	0.8	3	1	ABOVE PREMIUM
4	1	63598506744	MIKES HARD BLACK CHERRY LEMONADE 6/11.2 BTL	0.8	3	1	ABOVE PREMIUM

Segment # 3 : 3_5 DEPTH: 23 in WIDTH: 24 in DISTANCE FROM TOP OF BASE SHELF TO BOTTOM OF SHELF:0.00 in

POS #	FAC	UPC	NAME	CASES	CAPACITY	UNITS HIGH	Category
1	1	1820053218	BUD LIGHT 18/12 CAN	1.0	1	1	PREMIUM
2	1	1820011218	BUD 18/12 CAN	2.0	2	1	PREMIUM
3	1	7199030017	COORS LIGHT 18/12 CAN	1.0	1	1	PREMIUM
4	1	1820020077	NATURAL LIGHT 15/12 CAN	0.5	1	1	ECONOMY

Segment # 3 : 3_4 DEPTH: 23 in WIDTH: 24 in DISTANCE FROM TOP OF BASE SHELF TO BOTTOM OF SHELF:11.75 in

POS #	FAC	UPC	NAME	CASES	CAPACITY	UNITS HIGH	Category
1	1	1820053047	BUD LIGHT 12/12 CAN	1.0	2	1	PREMIUM
2	1	1820011047	BUD 12/12 CAN	1.0	2	1	PREMIUM
3	1	7199030069	COORS LIGHT 12/12 BTL	1.0	2	1	PREMIUM
4	1	7143934450	ROLLING ROCK 12/12 CAN	1.0	2	1	ECONOMY

Segment # 3 : 3_3 DEPTH: 23 in WIDTH: 24 in DISTANCE FROM TOP OF BASE SHELF TO BOTTOM OF SHELF:23.25 in

POS #	FAC	UPC	NAME	CASES	CAPACITY	UNITS HIGH	Category
1	1	1820000771	BUD 12/12 BTL	1.0	2	1	PREMIUM
2	1	7199000048	COORS LIGHT 12/12 CAN	1.0	2	1	PREMIUM
3	1	3410057340	LITE 18/12 CAN	1.0	1	1	PREMIUM
4	1	1820000784	ODOULS NEAR BEER 6/12 BTL	0.5	2	1	NA BEER

Segment # 3 : 3_2 DEPTH: 23 in WIDTH: 24 in DISTANCE FROM TOP OF BASE SHELF TO BOTTOM OF SHELF:33.75 in



CVS # 2141 COLD

Address: 2925 KINGS HWY | City: BROOKLYN | State: NY

Chain/StoreNumber: CVS - EAST 2141

Reset Name: 2019 SPRING

Planogram Name: 2141_3_DOOR_COLD

POS	# FAC	UPC	NAME	CASES	CAPACITY	UNITS HIGH	Category
1	1	7231123021	SOL 12/12 BTL	1.0	2	1	ABOVE PREMIUM
2	1	3410051681	CAPE LINE VARIETY PACK 12/12 CAN	1.0	2	1	ABOVE PREMIUM
3	1	1820020079	BUD LIGHT ORANGE 6/12 BTL	0.8	3	1	ABOVE PREMIUM
4	1	7199030005	COORS LIGHT 6/12 BTL	0.8	3	1	PREMIUM

Segment # 3 : 3_1 DEPTH: 23 in WIDTH: 24 in DISTANCE FROM TOP OF BASE SHELF TO BOTTOM OF SHELF:44.75 in

POS	# FAC	UPC	NAME	CASES	CAPACITY	UNITS HIGH	Category
1	1	7089701331	FOSTERS 1/25.4 CAN	0.5	6	1	ABOVE PREMIUM
2	1	61300874829	ARNOLD PALMER SPIKED HALF AND HALF 1/24 CAN	0.7	8	1	ABOVE PREMIUM
3	1	7289000119	HEINEKEN 1/24 CAN	0.6	7	1	ABOVE PREMIUM
4	1	8066095643	CORONA 1/24 CAN	0.7	8	1	ABOVE PREMIUM
5	1	1820025001	BUD LIGHT 1/25 CAN	0.5	8	1	PREMIUM
6	1	1820025000	BUD 1/25 CAN	0.5	8	1	PREMIUM
7	1	7199030065	COORS LIGHT 1/24 CAN	0.7	8	1	PREMIUM
8	1	7199010071	COORS BANQUET 1/24 CAN	0.7	8	1	PREMIUM

REVERSE VIEW (ONLY IF NEEDED)





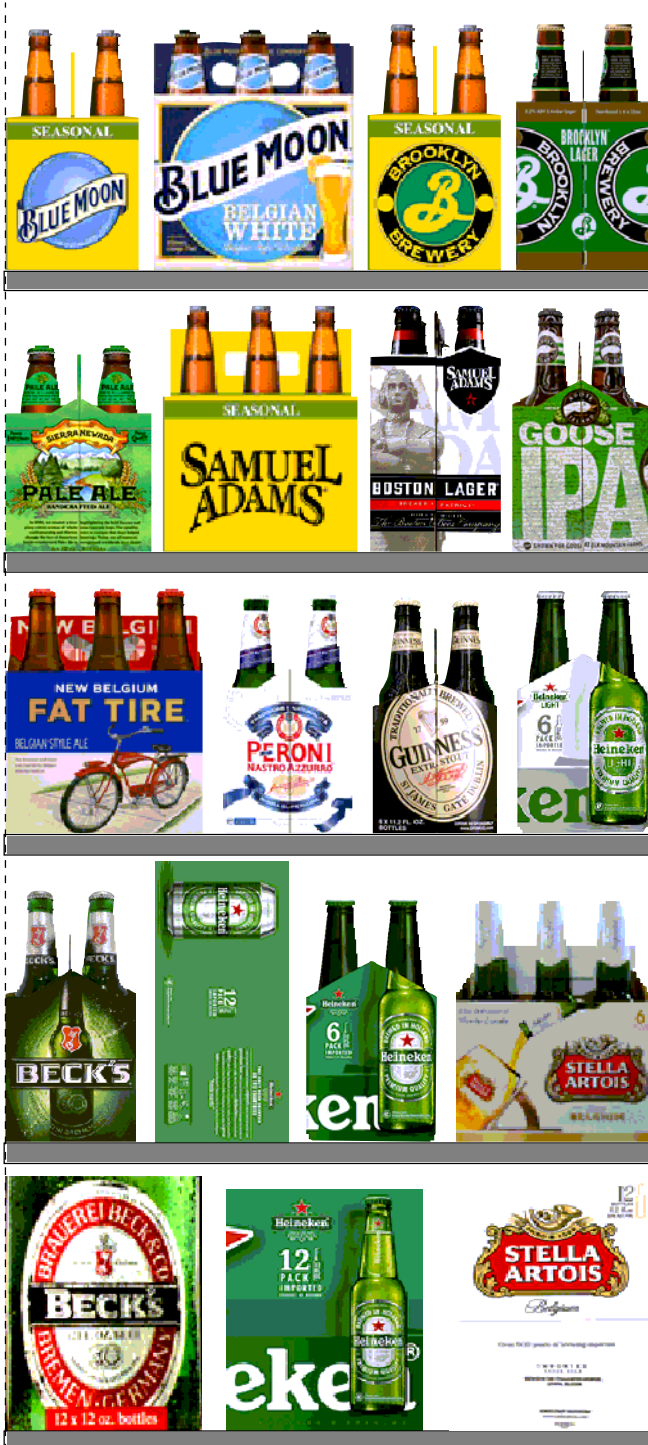
CVS # 2141 COLD

Reset Timing 2019 SPRING

Address: 2925 KINGS HWY | City: BROOKLYN | State: NY

REVERSE VIEW (ONLY IF NEEDED)

Segment:
1 of 3



Segment # 1 : 1_5 0.00 In

POS	UPC	NAME
1	7861500014	STELLA ARTOIS 12/ 11.2 BTL
2	7289000016	HEINEKEN 12/ 12 BTL
3	8248812300	BECKS 12/ 12 BTL

Segment # 1 : 1_4 10.75 In

POS	UPC	NAME
1	78615000001	STELLA ARTOIS 6/ 11.2 BTL
2	7289000011	HEINEKEN 6/ 12 BTL
3	7289000020	HEINEKEN 12/ 12 CAN
4	8248812345	BECKS 6/ 12 BTL

Segment # 1 : 1_3 22.25 In

POS	UPC	NAME
1	7289000158	HEINEKEN LIGHT 6/ 12 BTL
2	8382012393	GUINNESS EXTRA STOUT 6/ 12 BTL
3	18195400002	PERONI 6/ 11.2 BTL
4	75452700022	NEW BELGIUM FAT TIRE 6/ 12 BTL

Segment # 1 : 1_2 32.75 In

POS	UPC	NAME
1	73692011132	GOOSE ISLAND IPA 6/ 12 BTL
2	8769210012	SAMUEL ADAMS BOSTON LAGER 6/ 12 BTL
3	8769230050	SAMUEL ADAMS SEASONAL 6/ 12 BTL (A)
4	8378337521	SIERRA NEVADA PALE ALE 6/ 12 BTL

Segment # 1 : 1_1 43.25 In

POS	UPC	NAME
1	3061300001	BROOKLYN LAGER 6/ 12 BTL
2	3061300053	BROOKLYN SEASONAL 6/ 12 BTL
3	7199009511	BLUE MOON BELGIAN WHITE 6/ 12 BTL
4	7199009532	BLUE MOON SEASONAL 6/ 12 BTL



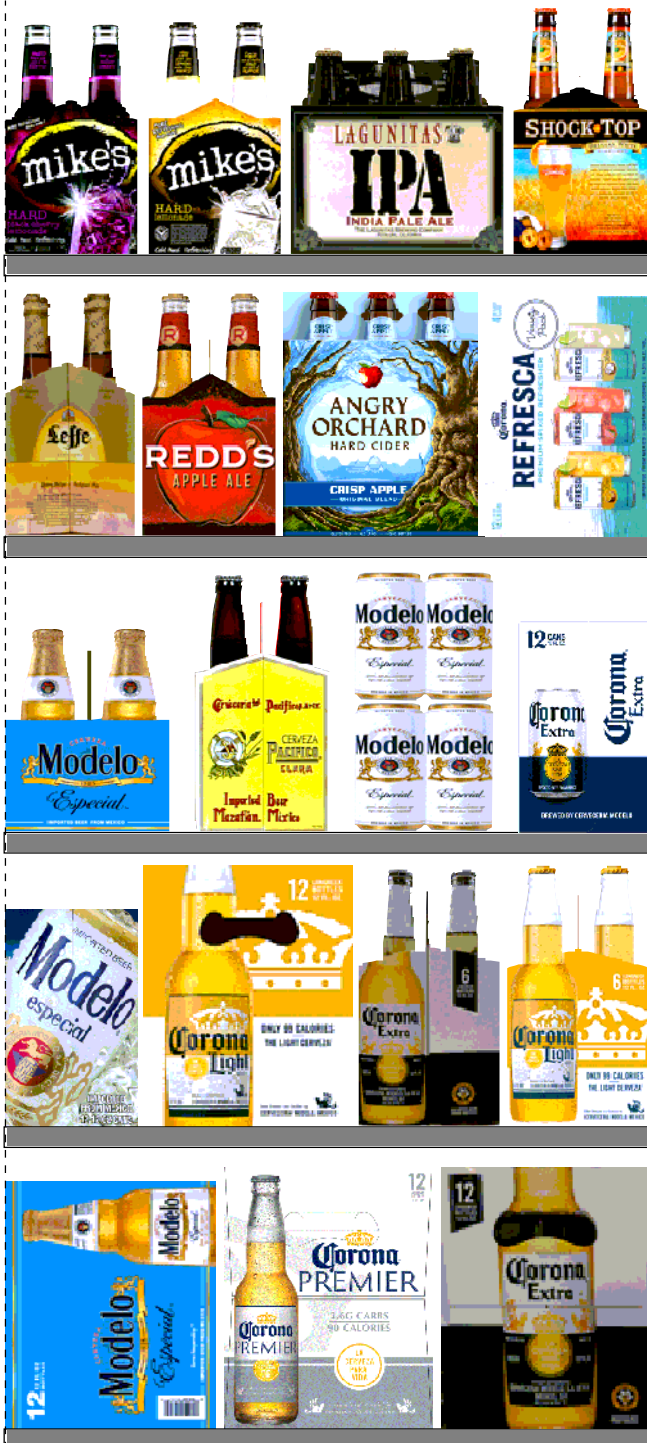
CVS # 2141 COLD

Reset Timing 2019 SPRING

Address: 2925 KINGS HWY | City: BROOKLYN | State: NY

REVERSE VIEW (ONLY IF NEEDED)

Segment:
2 of 3



Segment # 2 : 2_5 0.00 In

POS	UPC	NAME
1	8066095615	CORONA 12/ 12 BTL
2	3354495042	CORONA PREMIER 12/ 12 BTL
3	8066095757	MODELO ESPECIAL 12/ 12 BTL

Segment # 2 : 2_4 11.25 In

POS	UPC	NAME
1	8066095625	CORONA LIGHT 6/ 12 BTL
2	8066095605	CORONA 6/ 12 BTL
3	8066095675	CORONA LIGHT 12/ 12 BTL
4	8066095715	MODELO ESPECIAL 12/ 12 CAN

Segment # 2 : 2_3 22.25 In

POS	UPC	NAME
1	8066095695	CORONA 12/ 12 CAN
2	8066095755	MODELO ESPECIAL 6/ 12 CAN
3	8066095301	PACIFICO 6/ 12 BTL
4	8066095765	MODELO ESPECIAL 6/ 12 BTL

Segment # 2 : 2_2 33.25 In

POS	UPC	NAME
1	3354400013	CORONA REFRESCA VARIETY 12/ 12 CAN
2	8769282102	ANGRY ORCHARD CRISP APPLE 6/ 12 BTL
3	3410008716	REDD'S 6/ 12 BTL
4	78615000030	LEFFE BLONDE 6/ 11.2 BTL

Segment # 2 : 2_1 43.75 In

POS	UPC	NAME
1	1820013986	SHOCK TOP BELGIAN WHITE 6/ 12 BTL
2	72383000009	LAGUNITAS IPA 6/ 12 BTL
3	63598510062	MIKES HARD LEMONADE 6/ 11.2 BTL
4	63598506744	MIKES HARD BLACK CHERRY LEMONADE 6/ 11.2 BTL



CVS # 2141 COLD

Reset Timing 2019 SPRING

Address: 2925 KINGS HWY | City: BROOKLYN | State: NY

REVERSE VIEW (ONLY IF NEEDED)

Segment:
3 of 3



Segment # 3 : 3_5 0.00 In

POS	UPC	NAME
1	1820053218	BUD LIGHT 18/ 12 CAN
2	1820011218	BUD 18/ 12 CAN
3	7199030017	COORS LIGHT 18/ 12 CAN
4	1820020077	NATURAL LIGHT 15/ 12 CAN

Segment # 3 : 3_4 11.75 In

POS	UPC	NAME
1	1820053047	BUD LIGHT 12/ 12 CAN
2	1820011047	BUD 12/ 12 CAN
3	7199030069	COORS LIGHT 12/ 12 BTL
4	7143934450	ROLLING ROCK 12/ 12 CAN

Segment # 3 : 3_3 23.25 In

POS	UPC	NAME
1	1820000771	BUD 12/ 12 BTL
2	7199000048	COORS LIGHT 12/ 12 CAN
3	3410057340	LITE 18/ 12 CAN
4	1820000784	ODOULS NEAR BEER 6/ 12 BTL

Segment # 3 : 3_2 33.75 In

POS	UPC	NAME
1	7231123021	SOL 12/ 12 BTL
2	3410051681	CAPE LINE VARIETY PACK 12/ 12 CAN
3	1820020079	BUD LIGHT ORANGE 6/ 12 BTL
4	7199030005	COORS LIGHT 6/ 12 BTL

Segment # 3 : 3_1 44.75 In

POS	UPC	NAME
1	7089701331	FOSTERS 1/25.4 CAN
2	61300874829	ARNOLD PALMER SPIKED HALF AND HALF 1/24 CAN
3	7289000119	HEINEKEN 1/24 CAN
4	8066095643	CORONA 1/24 CAN
5	1820025001	BUD LIGHT 1/25 CAN
6	1820025000	BUD 1/25 CAN
7	7199030065	COORS LIGHT 1/24 CAN
8	7199010071	COORS BANQUET 1/24 CAN



CVS # 2141 COLD

Address: 2925 KINGS HWY | City: BROOKLYN | State: NY

Chain/StoreNumer: CVS - EAST 2141

Reset Name: 2019 SPRING

Planogram Name: 2141_3_DOOR_COLD

CVS PHARMA... Store # 2141 H: 4 ft 6.00 in W: 6 ft D: 2 ft # of segments: 3

Name: 1_1 W:24.00 in D:23.00 in Avail Space: 1.50 in Ht Space: 10.00 in

ID	UPC	Barcode	Name	Category	HFacings	Orientation	Units
2616	3061300001		BROOKLYN LAGER 6/12 BTL	ABOVE PREMIUM	1	Side	2
2638	3061300053		BROOKLYN SEASONAL 6/12 BTL	ABOVE PREMIUM	1	Side	2
10180	7199009511		BLUE MOON BELGIAN WHITE 6...	ABOVE PREMIUM	1	Front	4
10190	7199009532		BLUE MOON SEASONAL 6/12 B...	ABOVE PREMIUM	1	Side	3

Name: 1_2 W:24.00 in D:23.00 in Avail Space: 1.15 in Ht Space: 9.75 in

ID	UPC	Barcode	Name	Category	HFacings	Orientation	Units
11951	73692011132		GOOSE ISLAND IPA 6/12 BTL	ABOVE PREMIUM	1	Side	3
21956	8769210012		SAMUEL ADAMS BOSTON LAG...	ABOVE PREMIUM	1	Side	3
21995	8769230050		SAMUEL ADAMS SEASONAL 6/...	ABOVE PREMIUM	1	Front	4
17212	8378337521		SIERRA NEVADA PALE ALE 6/1...	ABOVE PREMIUM	1	Side	2

Name: 1_3 W:24.00 in D:23.00 in Avail Space: 2.17 in Ht Space: 9.75 in

ID	UPC	Barcode	Name	Category	HFacings	Orientation	Units
11341	7289000158		HEINEKEN LIGHT 6/12 BTL	ABOVE PREMIUM	1	Side	3
17305	8382012393		GUINNESS EXTRA STOUT 6/12...	ABOVE PREMIUM	1	Side	3
568	18195400002		PERONI 6/11.2 BTL	ABOVE PREMIUM	1	Side	3
13009	75452700022		NEW BELGIUM FAT TIRE 6/12 B...	ABOVE PREMIUM	1	Front	4

Name: 1_4 W:24.00 in D:23.00 in Avail Space: 2.02 in Ht Space: 10.75 in

ID	UPC	Barcode	Name	Category	HFacings	Orientation	Units
14089	78615000001		STELLA ARTOIS 6/11.2 BTL	ABOVE PREMIUM	1	Front	4
11298	7289000011		HEINEKEN 6/12 BTL	ABOVE PREMIUM	1	Side	3



CVS # 2141 COLD

Address: 2925 KINGS HWY | City: BROOKLYN | State: NY

Chain/StoreNumer: CVS - EAST 2141

Reset Name: 2019 SPRING

Planogram Name: 2141_3_DOOR_COLD

11301	7289000020		HEINEKEN 12/12 CAN	ABOVE PREMIUM	1	Top 90	2
16693	8248812345		BECKS 6/12 BTL	ABOVE PREMIUM	1	Side	3

Name: 1_5 W:24.00 in D:23.00 in Avail Space: 1.92 in Ht Space: 10.00 in

ID	UPC	Barcode	Name	Category	HFacings	Orientation	Units
14094	7861500014		STELLA ARTOIS 12/11.2 BTL	ABOVE PREMIUM	1	Side	2
11300	7289000016		HEINEKEN 12/12 BTL	ABOVE PREMIUM	1	Side	2
16691	8248812300		BECKS 12/12 BTL	ABOVE PREMIUM	1	Side	2

Name: 2_1 W:24.00 in D:23.00 in Avail Space: 1.04 in Ht Space: 9.50 in

ID	UPC	Barcode	Name	Category	HFacings	Orientation	Units
1345	1820013986		SHOCK TOP BELGIAN WHITE 6...	ABOVE PREMIUM	1	Side	2
10845	72383000009		LAGUNITAS IPA 6/12 BTL	ABOVE PREMIUM	1	Front	4
6413	63598510062		MIKES HARD LEMONADE 6/11....	ABOVE PREMIUM	1	Side	3
6402	63598506744		MIKES HARD BLACK CHERRY L...	ABOVE PREMIUM	1	Side	3

Name: 2_2 W:24.00 in D:23.00 in Avail Space: 0.66 in Ht Space: 9.75 in

ID	UPC	Barcode	Name	Category	HFacings	Orientation	Units
86777	3354400013		CORONA REFRESCA VARIETY...	ABOVE PREMIUM	1	Front 90	3
22090	8769282102		ANGRY ORCHARD CRISP APP...	ABOVE PREMIUM	1	Front	4
3255	3410008716		REDD'S 6/12 BTL	ABOVE PREMIUM	1	Side	3
14098	78615000030		LEFFE BLONDE 6/11.2 BTL	ABOVE PREMIUM	1	Side	3

Name: 2_3 W:24.00 in D:23.00 in Avail Space: 2.67 in Ht Space: 10.25 in

ID	UPC	Barcode	Name	Category	HFacings	Orientation	Units
15426	8066095695		CORONA 12/12 CAN	ABOVE PREMIUM	1	Side	2



CVS # 2141 COLD

Address: 2925 KINGS HWY | City: BROOKLYN | State: NY

Chain/StoreNumer: CVS - EAST 2141

Reset Name: 2019 SPRING

Planogram Name: 2141_3_DOOR_COLD

15435	8066095755		MODELO ESPECIAL 6/12 CAN	ABOVE PREMIUM	1	Side	4
15383	8066095301		PACIFICO 6/12 BTL	ABOVE PREMIUM	1	Side	2
15442	8066095765		MODELO ESPECIAL 6/12 BTL	ABOVE PREMIUM	1	Side	2

Name: 2_4 W:24.00 in D:23.00 in Avail Space: 0.71 in Ht Space: 10.25 in

ID	UPC	Barcode	Name	Category	HFacings	Orientation	Units
15408	8066095625		CORONA LIGHT 6/12 BTL	ABOVE PREMIUM	1	Side	3
15400	8066095605		CORONA 6/12 BTL	ABOVE PREMIUM	1	Side	3
15416	8066095675		CORONA LIGHT 12/12 BTL	ABOVE PREMIUM	1	Side	2
15429	8066095715		MODELO ESPECIAL 12/12 CAN	ABOVE PREMIUM	1	Side	2

Name: 2_5 W:24.00 in D:23.00 in Avail Space: 0.70 in Ht Space: 10.50 in

ID	UPC	Barcode	Name	Category	HFacings	Orientation	Units
15403	8066095615		CORONA 12/12 BTL	ABOVE PREMIUM	1	Side	2
44952	3354495042		CORONA PREMIER 12/12 BTL	ABOVE PREMIUM	1	Side	2
15436	8066095757		MODELO ESPECIAL 12/12 BTL	ABOVE PREMIUM	1	Side 90	1

Name: 3_1 W:24.00 in D:23.00 in Avail Space: 0.55 in Ht Space: 8.50 in

ID	UPC	Barcode	Name	Category	HFacings	Orientation	Units
9452	7089701331		FOSTERS 1/25.4 CAN	ABOVE PREMIUM	1	Front	6
66064	61300874829		ARNOLD PALMER SPIKED HAL...	ABOVE PREMIUM	1	Side	8
11327	7289000119		HEINEKEN 1/24 CAN	ABOVE PREMIUM	1	Front	7
15415	8066095643		CORONA 1/24 CAN	ABOVE PREMIUM	1	Front	8
1521	1820025001		BUD LIGHT 1/25 CAN	PREMIUM	1	Front	8



CVS # 2141 COLD

Address: 2925 KINGS HWY | City: BROOKLYN | State: NY

Chain/StoreNumer: CVS - EAST 2141

Reset Name: 2019 SPRING

Planogram Name: 2141_3_DOOR_COLD

1520	1820025000		BUD 1/25 CAN	PREMIUM	1	Side	8
10346	7199030065		COORS LIGHT 1/24 CAN	PREMIUM	1	Front	8
10243	7199010071		COORS BANQUET 1/24 CAN	PREMIUM	1	Front	8

Name: 3_2 W:24.00 in D:23.00 in Avail Space: 0.68 in Ht Space: 10.25 in

ID	UPC	Barcode	Name	Category	HFacings	Orientation	Units
10790	7231123021		SOL 12/12 BTL	ABOVE PREMIUM	1	Side	2
86788	3410051681		CAPE LINE VARIETY PACK 12/1...	ABOVE PREMIUM	1	Side 90	2
67176	1820020079		BUD LIGHT ORANGE 6/12 BTL	ABOVE PREMIUM	1	Side	3
10322	7199030005		COORS LIGHT 6/12 BTL	PREMIUM	1	Side	3

Name: 3_3 W:24.00 in D:23.00 in Avail Space: 1.30 in Ht Space: 9.75 in

ID	UPC	Barcode	Name	Category	HFacings	Orientation	Units
1058	1820000771		BUD 12/12 BTL	PREMIUM	1	Side	2
10164	7199000048		COORS LIGHT 12/12 CAN	PREMIUM	1	Side	2
3552	3410057340		LITE 18/12 CAN	PREMIUM	1	Side	1
1065	1820000784		ODOULS NEAR BEER 6/12 BTL	NA BEER	1	Side	2

Name: 3_4 W:24.00 in D:23.00 in Avail Space: 1.78 in Ht Space: 10.75 in

ID	UPC	Barcode	Name	Category	HFacings	Orientation	Units
1659	1820053047		BUD LIGHT 12/12 CAN	PREMIUM	1	Top 90	2
1297	1820011047		BUD 12/12 CAN	PREMIUM	1	Top 90	2
10348	7199030069		COORS LIGHT 12/12 BTL	PREMIUM	1	Side	2
9886	7143934450		ROLLING ROCK 12/12 CAN	ECONOMY	1	Side	2







CVS # 2141 COLD

Address: 2925 KINGS HWY | City: BROOKLYN | State: NY

Chain/StoreNumer: CVS - EAST 2141

Reset Name: 2019 SPRING

Planogram Name: 2141_3_DOOR_COLD

Name: 3_5		W:24.00 in		D:23.00 in		Avail Space: 0.96 in		Ht Space: 11.00 in	
ID	UPC	Barcode	Name	Category	HFacings	Orientation	Units		
1667	1820053218	 18200 53218 4	BUD LIGHT 18/12 CAN	PREMIUM	1	Side	1		
1307	1820011218	 18200 11218 8	BUD 18/12 CAN	PREMIUM	1	Side 90	2		
10329	7199030017	 71990 30017 3	COORS LIGHT 18/12 CAN	PREMIUM	1	Side	1		
61975	1820020077	 18200 20077 9	NATURAL LIGHT 15/12 CAN	ECONOMY	1	Side	1		