





CVS # 2700 COLD

Address: 1402 SHEEPSHEAD BAY RD | City: BROOKLYN | State: NY

Chain/StoreNumer: CVS - EAST 2700

Reset Name: 2019 SPRING

Planogram Name: 2700_5_DOOR_COLD

Segment # 1 : 1_6 DEPTH: 27 in WIDTH: 22 in DISTANCE FROM TOP OF BASE SHELF TO BOTTOM OF SHELF:0.00 in

POS #	FAC	UPC	NAME	CASES	CAPACITY	UNITS HIGH	Category
1	1	1820028443	NATURAL ICE 15/12 CAN	2.0	4	1	ECONOMY
2	1	3410001509	HIGH LIFE 12/12 BTL	2.0	4	1	ECONOMY
3	1	7199030078	COORS LIGHT 18/12 BTL	2.0	2	1	PREMIUM

Segment # 1 : 1_5 DEPTH: 27 in WIDTH: 22 in DISTANCE FROM TOP OF BASE SHELF TO BOTTOM OF SHELF:20.50 in

POS #	FAC	UPC	NAME	CASES	CAPACITY	UNITS HIGH	Category
1	1	7143934450	ROLLING ROCK 12/12 CAN	1.0	2	1	ECONOMY
2	1	3410001505	HIGH LIFE 6/12 BTL	1.3	5	1	ECONOMY
3	1	3410057509	LITE 12/12 BTL	1.0	2	1	PREMIUM

Segment # 1 : 1_4 DEPTH: 27 in WIDTH: 22 in DISTANCE FROM TOP OF BASE SHELF TO BOTTOM OF SHELF:32.50 in

POS #	FAC	UPC	NAME	CASES	CAPACITY	UNITS HIGH	Category
1	1	2210000170	PABST 12/12 CAN	2.0	4	1	ECONOMY
2	1	3410057340	LITE 18/12 CAN	2.0	2	1	PREMIUM
3	1	3410057636	LITE 12/12 CAN	1.5	3	1	PREMIUM

Segment # 1 : 1_3 DEPTH: 27 in WIDTH: 22 in DISTANCE FROM TOP OF BASE SHELF TO BOTTOM OF SHELF:44.00 in

POS #	FAC	UPC	NAME	CASES	CAPACITY	UNITS HIGH	Category
1	1	1820000784	ODOULS NEAR BEER 6/12 BTL	0.8	3	1	NA BEER
2	1	3410015505	MILLER 64 6/12 BTL	0.8	3	1	PREMIUM
3	1	3410057505	LITE 6/12 BTL	0.8	3	1	PREMIUM
4	2	7199030120	COORS LIGHT 3/24 CAN	1.5	6	2	PREMIUM

Segment # 1 : 1_2 DEPTH: 27 in WIDTH: 22 in DISTANCE FROM TOP OF BASE SHELF TO BOTTOM OF SHELF:56.00 in

POS #	FAC	UPC	NAME	CASES	CAPACITY	UNITS HIGH	Category
1	1	2210000004	PABST 1/24 CAN	0.8	9	1	ECONOMY
2	1	7199047712	KEYSTONE ICE 1/24 CAN	0.8	9	1	ECONOMY
3	1	7199010071	COORS BANQUET 1/24 CAN	0.8	9	1	PREMIUM
4	1	7199030065	COORS LIGHT 1/24 CAN	0.8	9	1	PREMIUM
5	1	1820025000	BUD 1/25 CAN	0.6	9	1	PREMIUM
6	1	1820025001	BUD LIGHT 1/25 CAN	0.6	9	1	PREMIUM
7	1	1820025010	MICHELOB ULTRA 1/25 CAN	0.6	9	1	ABOVE PREMIUM

Segment # 1 : 1_1 DEPTH: 27 in WIDTH: 22 in DISTANCE FROM TOP OF BASE SHELF TO BOTTOM OF SHELF:68.00 in

POS #	FAC	UPC	NAME	CASES	CAPACITY	UNITS HIGH	Category
1	1	7089701331	FOSTERS 1/25.4 CAN	0.7	8	1	ABOVE PREMIUM
2	1	61300874829	ARNOLD PALMER SPIKED HALF AND HALF 1/24 CAN	0.8	9	1	ABOVE PREMIUM
3	1	8797502650	SAPPORO 1/22 CAN	0.8	9	1	ABOVE PREMIUM
4	1	8066095721	MODELO ESPECIAL 1/24 CAN	0.8	9	1	ABOVE PREMIUM
5	1	8066095643	CORONA 1/24 CAN	0.8	9	1	ABOVE PREMIUM
6	1	7289000119	HEINEKEN 1/24 CAN	0.7	8	1	ABOVE PREMIUM
7	1	75452700703	NEW BELGIUM DAYBLAZER 1/24 CAN	0.8	9	1	ABOVE PREMIUM

Segment # 2 : 2_6 DEPTH: 27 in WIDTH: 22 in DISTANCE FROM TOP OF BASE SHELF TO BOTTOM OF SHELF:0.00 in



CVS # 2700 COLD

Address: 1402 SHEEPSHEAD BAY RD | City: BROOKLYN | State: NY

Chain/StoreNumer: CVS - EAST 2700

Reset Name: 2019 SPRING

Planogram Name: 2700_5_DOOR_COLD

POS	# FAC	UPC	NAME	CASES	CAPACITY	UNITS HIGH	Category
1	1	7199030017	COORS LIGHT 18/12 CAN	3.0	3	1	PREMIUM
2	1	1820011308	BUD 18/12 BTL	2.0	2	1	PREMIUM
3	1	1820053308	BUD LIGHT 18/12 BTL	2.0	2	1	PREMIUM

Segment # 2 : 2_5 DEPTH: 27 in WIDTH: 22 in DISTANCE FROM TOP OF BASE SHELF TO BOTTOM OF SHELF:20.50 in

POS	# FAC	UPC	NAME	CASES	CAPACITY	UNITS HIGH	Category
1	1	7199000048	COORS LIGHT 12/12 CAN	1.5	3	1	PREMIUM
2	1	1820011047	BUD 12/12 CAN	1.5	3	1	PREMIUM
3	1	1820011218	BUD 18/12 CAN	1.0	1	1	PREMIUM
4	1	1820053218	BUD LIGHT 18/12 CAN	1.0	1	1	PREMIUM

Segment # 2 : 2_4 DEPTH: 27 in WIDTH: 22 in DISTANCE FROM TOP OF BASE SHELF TO BOTTOM OF SHELF:32.50 in

POS	# FAC	UPC	NAME	CASES	CAPACITY	UNITS HIGH	Category
1	1	7199030005	COORS LIGHT 6/12 BTL	0.8	3	1	PREMIUM
2	1	1820000771	BUD 12/12 BTL	1.0	2	1	PREMIUM
3	1	1820000769	BUD LIGHT 12/12 BTL	1.0	2	1	PREMIUM

Segment # 2 : 2_3 DEPTH: 27 in WIDTH: 22 in DISTANCE FROM TOP OF BASE SHELF TO BOTTOM OF SHELF:44.00 in

POS	# FAC	UPC	NAME	CASES	CAPACITY	UNITS HIGH	Category
1	1	7199030069	COORS LIGHT 12/12 BTL	1.0	2	1	PREMIUM
2	1	1820053047	BUD LIGHT 12/12 CAN	1.5	3	1	PREMIUM
3	1	1820005990	MICHELOB ULTRA 12/12 BTL	1.0	2	1	ABOVE PREMIUM

Segment # 2 : 2_2 DEPTH: 27 in WIDTH: 22 in DISTANCE FROM TOP OF BASE SHELF TO BOTTOM OF SHELF:56.00 in

POS	# FAC	UPC	NAME	CASES	CAPACITY	UNITS HIGH	Category
1	1	7199000008	COORS LIGHT 6/12 CAN	1.5	6	1	PREMIUM
2	1	1820000833	BUD LIGHT 6/12 BTL	0.8	3	1	PREMIUM
3	1	1820020079	BUD LIGHT ORANGE 6/12 BTL	0.8	3	1	ABOVE PREMIUM
4	1	1820005989	MICHELOB ULTRA 6/12 BTL	0.8	3	1	ABOVE PREMIUM

Segment # 2 : 2_1 DEPTH: 27 in WIDTH: 22 in DISTANCE FROM TOP OF BASE SHELF TO BOTTOM OF SHELF:68.00 in

POS	# FAC	UPC	NAME	CASES	CAPACITY	UNITS HIGH	Category
1	1	1820000834	BUD 6/12 BTL	0.8	3	1	PREMIUM
2	1	8066095881	VICTORIA 6/12 BTL	0.8	3	1	ABOVE PREMIUM
3	1	8066095301	PACIFICO 6/12 BTL	0.8	3	1	ABOVE PREMIUM
4	1	8382056793	RED STRIPE LAGER 6/11.2 BTL	0.8	3	1	ABOVE PREMIUM

Segment # 3 : 3_6 DEPTH: 27 in WIDTH: 22 in DISTANCE FROM TOP OF BASE SHELF TO BOTTOM OF SHELF:0.00 in

POS	# FAC	UPC	NAME	CASES	CAPACITY	UNITS HIGH	Category
1	1	8066095715	MODELO ESPECIAL 12/12 CAN	2.0	4	1	ABOVE PREMIUM
2	1	8066095615	CORONA 12/12 BTL	2.0	4	1	ABOVE PREMIUM
3	1	8066095675	CORONA LIGHT 12/12 BTL	2.0	4	1	ABOVE PREMIUM

Segment # 3 : 3_5 DEPTH: 27 in WIDTH: 22 in DISTANCE FROM TOP OF BASE SHELF TO BOTTOM OF SHELF:20.50 in



CVS # 2700 COLD

Address: 1402 SHEEPSHEAD BAY RD | City: BROOKLYN | State: NY

Chain/StoreNumer: CVS - EAST 2700

Reset Name: 2019 SPRING

Planogram Name: 2700_5_DOOR_COLD

POS	# FAC	UPC	NAME	CASES	CAPACITY	UNITS HIGH	Category
1	1	3354495042	CORONA PREMIER 12/12 BTL	1.0	2	1	ABOVE PREMIUM
2	1	8066095695	CORONA 12/12 CAN	1.5	3	1	ABOVE PREMIUM
3	1	7231123021	SOL 12/12 BTL	1.0	2	1	ABOVE PREMIUM

Segment # 3 : 3_4 DEPTH: 27 in WIDTH: 22 in DISTANCE FROM TOP OF BASE SHELF TO BOTTOM OF SHELF:32.50 in

POS	# FAC	UPC	NAME	CASES	CAPACITY	UNITS HIGH	Category
1	1	8066095765	MODELO ESPECIAL 6/12 BTL	0.5	2	1	ABOVE PREMIUM
2	1	8066095605	CORONA 6/12 BTL	0.8	3	1	ABOVE PREMIUM
3	1	8066095625	CORONA LIGHT 6/12 BTL	0.8	3	1	ABOVE PREMIUM
4	1	8248812345	BECKS 6/12 BTL	0.8	3	1	ABOVE PREMIUM

Segment # 3 : 3_3 DEPTH: 27 in WIDTH: 22 in DISTANCE FROM TOP OF BASE SHELF TO BOTTOM OF SHELF:44.00 in

POS	# FAC	UPC	NAME	CASES	CAPACITY	UNITS HIGH	Category
1	1	8992427891	YUENGLING LAGER 6/12 BTL	0.8	3	1	PREMIUM
2	1	8066095755	MODELO ESPECIAL 6/12 CAN	1.5	6	1	ABOVE PREMIUM
3	1	8066095685	CORONA 6/12 CAN	1.5	6	1	ABOVE PREMIUM
4	1	8248812377	BECKS 4/16 CAN	0.8	5	1	ABOVE PREMIUM

Segment # 3 : 3_2 DEPTH: 27 in WIDTH: 22 in DISTANCE FROM TOP OF BASE SHELF TO BOTTOM OF SHELF:56.00 in

POS	# FAC	UPC	NAME	CASES	CAPACITY	UNITS HIGH	Category
1	1	7231163012	DOS EQUIS 6/12 BTL	0.8	3	1	ABOVE PREMIUM
2	1	8066095785	MODELO NEGRA 6/12 BTL	0.5	2	1	ABOVE PREMIUM
3	1	78615000030	LEFFE BLONDE 6/11.2 BTL	0.8	3	1	ABOVE PREMIUM
4	1	7231163001	PILSNER URQUELL 6/11.2 BTL	0.8	3	1	ABOVE PREMIUM

Segment # 3 : 3_1 DEPTH: 27 in WIDTH: 22 in DISTANCE FROM TOP OF BASE SHELF TO BOTTOM OF SHELF:68.00 in

POS	# FAC	UPC	NAME	CASES	CAPACITY	UNITS HIGH	Category
1	1	8382012360	GUINNESS DRAUGHT STOUT 4/14.9 CAN	0.8	5	1	ABOVE PREMIUM
2	1	8382010401	GUINNESS DRAUGHT STOUT 6/11.2 BTL	0.8	3	1	ABOVE PREMIUM
3	1	8382012393	GUINNESS EXTRA STOUT 6/12 BTL	0.8	3	1	ABOVE PREMIUM
4	1	7289000126	MURPHYS IRISH STOUT 4/16 CAN	0.8	5	1	ABOVE PREMIUM

Segment # 4 : 4_6 DEPTH: 27 in WIDTH: 22 in DISTANCE FROM TOP OF BASE SHELF TO BOTTOM OF SHELF:0.00 in

POS	# FAC	UPC	NAME	CASES	CAPACITY	UNITS HIGH	Category
1	1	7289000020	HEINEKEN 12/12 CAN	2.0	4	1	ABOVE PREMIUM
2	1	7289000016	HEINEKEN 12/12 BTL	2.0	4	1	ABOVE PREMIUM
3	1	78615000014	STELLA ARTOIS 12/11.2 BTL	2.0	4	1	ABOVE PREMIUM

Segment # 4 : 4_5 DEPTH: 27 in WIDTH: 22 in DISTANCE FROM TOP OF BASE SHELF TO BOTTOM OF SHELF:21.00 in

POS	# FAC	UPC	NAME	CASES	CAPACITY	UNITS HIGH	Category
1	1	7289000011	HEINEKEN 6/12 BTL	0.8	3	1	ABOVE PREMIUM
2	1	7289000159	HEINEKEN LIGHT 12/12 BTL	1.0	2	1	ABOVE PREMIUM
3	1	78615000001	STELLA ARTOIS 6/11.2 BTL	1.3	5	1	ABOVE PREMIUM



CVS # 2700 COLD

Address: 1402 SHEEPSHEAD BAY RD | City: BROOKLYN | State: NY

Chain/StoreNumer: CVS - EAST 2700

Reset Name: 2019 SPRING

Planogram Name: 2700_5_DOOR_COLD

Segment # 4 : 4_4 DEPTH: 27 In WIDTH: 22 In DISTANCE FROM TOP OF BASE SHELF TO BOTTOM OF SHELF:32.50 In

POS	# FAC	UPC	NAME	CASES	CAPACITY	UNITS HIGH	Category
1	1	7289000158	HEINEKEN LIGHT 6/12 BTL	0.8	3	1	ABOVE PREMIUM
2	1	18195400002	PERONI 6/11.2 BTL	0.8	3	1	ABOVE PREMIUM
3	1	8769283102	TWISTED TEA ORIGINAL 6/12 BTL	0.8	3	1	ABOVE PREMIUM
4	1	63598525948	MIKES HARDER BLACKCHERRY LEMONADE 12/8 CAN	1.5	3	1	ABOVE PREMIUM

Segment # 4 : 4_3 DEPTH: 27 In WIDTH: 22 In DISTANCE FROM TOP OF BASE SHELF TO BOTTOM OF SHELF:44.50 In

POS	# FAC	UPC	NAME	CASES	CAPACITY	UNITS HIGH	Category
1	1	78615000036	HOEGAARDEN WHITE 6/11.2 BTL	0.8	3	1	ABOVE PREMIUM
2	1	63598510062	MIKES HARD LEMONADE 6/11.2 BTL	0.8	3	1	ABOVE PREMIUM
3	1	63598506744	MIKES HARD BLACK CHERRY LEMONADE 6/11.2 BTL	0.8	3	1	ABOVE PREMIUM
4	1	63848900029	DOGFISH HEAD 60 MINUTE IPA 6/12 BTL	0.8	3	1	ABOVE PREMIUM

Segment # 4 : 4_2 DEPTH: 27 In WIDTH: 22 In DISTANCE FROM TOP OF BASE SHELF TO BOTTOM OF SHELF:56.00 In

POS	# FAC	UPC	NAME	CASES	CAPACITY	UNITS HIGH	Category
1	1	8769282102	ANGRY ORCHARD CRISP APPLE 6/12 BTL	0.8	3	1	ABOVE PREMIUM
2	1	8200072385	SMIRNOFF ICE ORIGINAL 6/11.2 BTL	0.8	3	1	ABOVE PREMIUM
3	1	8200072751	SMIRNOFF ICE GREEN APPLE BITE 6/11.2 BTL	0.8	3	1	ABOVE PREMIUM
4	1	1820013986	SHOCK TOP BELGIAN WHITE 6/12 BTL	0.8	3	1	ABOVE PREMIUM

Segment # 4 : 4_1 DEPTH: 27 In WIDTH: 22 In DISTANCE FROM TOP OF BASE SHELF TO BOTTOM OF SHELF:68.00 In

POS	# FAC	UPC	NAME	CASES	CAPACITY	UNITS HIGH	Category
1	1	8834510140	MURPHYS IRISH STOUT 4/14.9 CAN	0.8	5	1	ABOVE PREMIUM
2	1	8378337521	SIERRA NEVADA PALE ALE 6/12 BTL	0.8	3	1	ABOVE PREMIUM
3	1	72383000020	LAGUNITAS LITTLE SUMPIN 6/12 BTL	0.8	3	1	ABOVE PREMIUM
4	1	72383000009	LAGUNITAS IPA 6/12 BTL	0.8	3	1	ABOVE PREMIUM

Segment # 5 : 5_6 DEPTH: 27 In WIDTH: 22 In DISTANCE FROM TOP OF BASE SHELF TO BOTTOM OF SHELF:0.00 In

POS	# FAC	UPC	NAME	CASES	CAPACITY	UNITS HIGH	Category
1	1	8769210014	SAMUEL ADAMS BOSTON LAGER 12/12 BTL	2.0	4	1	ABOVE PREMIUM
2	1	7199009516	BLUE MOON BELGIAN WHITE 12/12 BTL	2.0	4	1	ABOVE PREMIUM
3	1	75452700161	NEW BELGIUM FAT TIRE 12/12 CAN	2.0	4	1	ABOVE PREMIUM

Segment # 5 : 5_5 DEPTH: 27 In WIDTH: 22 In DISTANCE FROM TOP OF BASE SHELF TO BOTTOM OF SHELF:21.00 In

POS	# FAC	UPC	NAME	CASES	CAPACITY	UNITS HIGH	Category
1	1	85961200103	21ST AMENDMENT BREW FREE OR DIE 6/12 CAN	1.5	6	1	ABOVE PREMIUM
2	1	81760601020	CAPTAIN LAWRENCE IPA 6/12 BTL	0.8	3	1	ABOVE PREMIUM
3	1	81760601000	CAPTAIN LAWRENCE FRESHCHESTER 6/12 BTL	0.8	3	1	ABOVE PREMIUM
4	1	75452700022	NEW BELGIUM FAT TIRE 6/12 BTL	0.8	3	1	ABOVE PREMIUM

Segment # 5 : 5_4 DEPTH: 27 In WIDTH: 22 In DISTANCE FROM TOP OF BASE SHELF TO BOTTOM OF SHELF:32.50 In

POS	# FAC	UPC	NAME	CASES	CAPACITY	UNITS HIGH	Category
1	1	8769200127	SAMUEL ADAMS REBEL IPA 6/12 BTL	0.8	3	1	ABOVE PREMIUM
2	1	8769227102	SAMUEL ADAMS CHERRY WHEAT ALE 6/12 BTL	0.8	3	1	ABOVE PREMIUM



CVS # 2700 COLD

Address: 1402 SHEEPSHEAD BAY RD | City: BROOKLYN | State: NY

Chain/StoreNumer: CVS - EAST 2700

Reset Name: 2019 SPRING

Planogram Name: 2700_5_DOOR_COLD

3	1	8769230050	SAMUEL ADAMS SEASONAL 6/12 BTL (A)	0.8	3	1	ABOVE PREMIUM
4	1	8769210012	SAMUEL ADAMS BOSTON LAGER 6/12 BTL	0.8	3	1	ABOVE PREMIUM

Segment # 5 : 5_3 DEPTH: 27 in WIDTH: 22 in DISTANCE FROM TOP OF BASE SHELF TO BOTTOM OF SHELF:44.50 in

POS	# FAC	UPC	NAME	CASES	CAPACITY	UNITS HIGH	Category
1	1	7199009561	BLUE MOON MANGO WHEAT 6/12 BTL	0.8	3	1	ABOVE PREMIUM
2	1	7199009532	BLUE MOON SEASONAL 6/12 BTL	0.8	3	1	ABOVE PREMIUM
3	1	7199009511	BLUE MOON BELGIAN WHITE 6/12 BTL	0.8	3	1	ABOVE PREMIUM
4	1	3354400013	CORONA REFRESCA VARIETY 12/12 CAN	1.0	2	1	ABOVE PREMIUM

Segment # 5 : 5_2 DEPTH: 27 in WIDTH: 22 in DISTANCE FROM TOP OF BASE SHELF TO BOTTOM OF SHELF:56.00 in

POS	# FAC	UPC	NAME	CASES	CAPACITY	UNITS HIGH	Category
1	1	73692011132	GOOSE ISLAND IPA 6/12 BTL	0.8	3	1	ABOVE PREMIUM
2	1	3061300001	BROOKLYN LAGER 6/12 BTL	0.8	3	1	ABOVE PREMIUM
3	1	3061300053	BROOKLYN SEASONAL 6/12 BTL	0.8	3	1	ABOVE PREMIUM
4	1	63598554890	WHITE CLAW VARIETY PACK 12/12 CAN	1.0	2	1	ABOVE PREMIUM

Segment # 5 : 5_1 DEPTH: 27 in WIDTH: 22 in DISTANCE FROM TOP OF BASE SHELF TO BOTTOM OF SHELF:68.00 in

POS	# FAC	UPC	NAME	CASES	CAPACITY	UNITS HIGH	Category
1	1	85909300242	SIXPOINT SWEET ACTION 6/12 CAN	0.8	3	1	ABOVE PREMIUM
2	1	85909300243	SIXPOINT BENGALI IPA 6/12 CAN	0.8	3	1	ABOVE PREMIUM
3	1	78036960806	PEAK ORGANIC IPA 6/12 CAN	0.8	3	1	ABOVE PREMIUM
4	1	3410051681	CAPE LINE VARIETY PACK 12/12 CAN	1.0	2	1	ABOVE PREMIUM



CVS # 2700 COLD

Reset Timing 2019 SPRING

Address: 1402 SHEEPSHEAD BAY RD | City: BROOKLYN | State: NY

REVERSE VIEW (ONLY IF NEEDED)





CVS # 2700 COLD

Reset Timing 2019 SPRING

Address: 1402 SHEEPSHEAD BAY RD | City: BROOKLYN | State: NY

REVERSE VIEW (ONLY IF NEEDED)

Segment:
1 of 5



Segment # 1 : 1_6 0.00 In

POS	UPC	NAME
1	1820028443	NATURAL ICE 15/ 12 CAN
2	3410001509	HIGH LIFE 12/ 12 BTL
3	7199030078	COORS LIGHT 18/ 12 BTL

Segment # 1 : 1_5 20.50 In

POS	UPC	NAME
1	7143934450	ROLLING ROCK 12/ 12 CAN
2	3410001505	HIGH LIFE 6/ 12 BTL
3	3410057509	LITE 12/ 12 BTL

Segment # 1 : 1_4 32.50 In

POS	UPC	NAME
1	2210000170	PABST 12/ 12 CAN
2	3410057340	LITE 18/ 12 CAN
3	3410057636	LITE 12/ 12 CAN

Segment # 1 : 1_3 44.00 In

POS	UPC	NAME
1	1820000784	ODOULS NEAR BEER 6/ 12 BTL
2	3410015505	MILLER 64 6/ 12 BTL
3	3410057505	LITE 6/ 12 BTL
4	7199030120	COORS LIGHT 3/ 24 CAN

Segment # 1 : 1_2 56.00 In

POS	UPC	NAME
1	2210000004	PABST 1/ 24 CAN
2	7199047712	KEYSTONE ICE 1/ 24 CAN
3	7199010071	COORS BANQUET 1/ 24 CAN
4	7199030065	COORS LIGHT 1/ 24 CAN
5	1820025000	BUD 1/ 25 CAN
6	1820025001	BUD LIGHT 1/ 25 CAN
7	1820025010	MICHELOB ULTRA 1/ 25 CAN

Segment # 1 : 1_1 68.00 In

POS	UPC	NAME
1	7089701331	FOSTERS 1/ 25.4 CAN
2	61300874829	ARNOLD PALMER SPIKED HALF AND HALF 1/ 24 CAN
3	8797502650	SAPPORO 1/ 22 CAN
4	8066095721	MODELO ESPECIAL 1/ 24 CAN
5	8066095643	CORONA 1/ 24 CAN
6	7289000119	HEINEKEN 1/ 24 CAN
7	75452700703	NEW BELGIUM DAYBLAZER 1/ 24 CAN



CVS # 2700 COLD

Reset Timing 2019 SPRING

Address: 1402 SHEEPSHEAD BAY RD | City: BROOKLYN | State: NY

REVERSE VIEW (ONLY IF NEEDED)

Segment:
2 of 5



Segment # 2 : 2_6 0.00 In

POS	UPC	NAME
1	7199030017	COORS LIGHT 18/ 12 CAN
2	1820011308	BUD 18/ 12 BTL
3	1820053308	BUD LIGHT 18/ 12 BTL

Segment # 2 : 2_5 20.50 In

POS	UPC	NAME
1	7199000048	COORS LIGHT 12/ 12 CAN
2	1820011047	BUD 12/ 12 CAN
3	1820011218	BUD 18/ 12 CAN
4	1820053218	BUD LIGHT 18/ 12 CAN

Segment # 2 : 2_4 32.50 In

POS	UPC	NAME
1	7199030005	COORS LIGHT 6/ 12 BTL
2	1820000771	BUD 12/ 12 BTL
3	1820000769	BUD LIGHT 12/ 12 BTL

Segment # 2 : 2_3 44.00 In

POS	UPC	NAME
1	7199030069	COORS LIGHT 12/ 12 BTL
2	1820053047	BUD LIGHT 12/ 12 CAN
3	1820005990	MICHELOB ULTRA 12/ 12 BTL

Segment # 2 : 2_2 56.00 In

POS	UPC	NAME
1	7199000008	COORS LIGHT 6/ 12 CAN
2	1820000833	BUD LIGHT 6/ 12 BTL
3	1820020079	BUD LIGHT ORANGE 6/ 12 BTL
4	1820005989	MICHELOB ULTRA 6/ 12 BTL

Segment # 2 : 2_1 68.00 In

POS	UPC	NAME
1	1820000834	BUD 6/ 12 BTL
2	8066095881	VICTORIA 6/ 12 BTL
3	8066095301	PACIFICO 6/ 12 BTL
4	8382056793	RED STRIPE LAGER 6/ 11.2 BTL



CVS # 2700 COLD

Reset Timing 2019 SPRING

Address: 1402 SHEEPSHEAD BAY RD | City: BROOKLYN | State: NY

REVERSE VIEW (ONLY IF NEEDED)

Segment:
3 of 5



Segment # 3 : 3_6 0.00 In

POS	UPC	NAME
1	8066095715	MODELO ESPECIAL 12/ 12 CAN
2	8066095615	CORONA 12/ 12 BTL
3	8066095675	CORONA LIGHT 12/ 12 BTL

Segment # 3 : 3_5 20.50 In

POS	UPC	NAME
1	3354495042	CORONA PREMIER 12/ 12 BTL
2	8066095695	CORONA 12/ 12 CAN
3	7231123021	SOL 12/ 12 BTL

Segment # 3 : 3_4 32.50 In

POS	UPC	NAME
1	8066095765	MODELO ESPECIAL 6/ 12 BTL
2	8066095605	CORONA 6/ 12 BTL
3	8066095625	CORONA LIGHT 6/ 12 BTL
4	8248812345	BECKS 6/ 12 BTL

Segment # 3 : 3_3 44.00 In

POS	UPC	NAME
1	8992427891	YUENGLING LAGER 6/ 12 BTL
2	8066095755	MODELO ESPECIAL 6/ 12 CAN
3	8066095685	CORONA 6/ 12 CAN
4	8248812377	BECKS 4/ 16 CAN

Segment # 3 : 3_2 56.00 In

POS	UPC	NAME
1	7231163012	DOS EQUIS 6/ 12 BTL
2	8066095785	MODELO NEGRA 6/ 12 BTL
3	7861500030	LEFFE BLONDE 6/ 11.2 BTL
4	7231163001	PILSNER URQUELL 6/ 11.2 BTL

Segment # 3 : 3_1 68.00 In

POS	UPC	NAME
1	8382012360	GUINNESS DRAUGHT STOUT 4/ 14.9 CAN
2	8382010401	GUINNESS DRAUGHT STOUT 6/ 11.2 BTL
3	8382012393	GUINNESS EXTRA STOUT 6/ 12 BTL
4	7289000126	MURPHYS IRISH STOUT 4/ 16 CAN



CVS # 2700 COLD

Reset Timing 2019 SPRING

Address: 1402 SHEEPSHEAD BAY RD | City: BROOKLYN | State: NY

REVERSE VIEW (ONLY IF NEEDED)

Segment:
4 of 5



Segment # 4 : 4_6 0.00 In

POS	UPC	NAME
1	7289000020	HEINEKEN 12/ 12 CAN
2	7289000016	HEINEKEN 12/ 12 BTL
3	78615000014	STELLA ARTOIS 12/ 11.2 BTL

Segment # 4 : 4_5 21.00 In

POS	UPC	NAME
1	7289000011	HEINEKEN 6/ 12 BTL
2	7289000159	HEINEKEN LIGHT 12/ 12 BTL
3	78615000001	STELLA ARTOIS 6/ 11.2 BTL

Segment # 4 : 4_4 32.50 In

POS	UPC	NAME
1	7289000158	HEINEKEN LIGHT 6/ 12 BTL
2	18195400002	PERONI 6/ 11.2 BTL
3	8769283102	TWISTED TEA ORIGINAL 6/ 12 BTL
4	63598525948	MIKES HARDER BLACKCHERRY LEMONADE 12/ 8 CAN

Segment # 4 : 4_3 44.50 In

POS	UPC	NAME
1	78615000036	HOEGAARDEN WHITE 6/ 11.2 BTL
2	63598510062	MIKES HARD LEMONADE 6/ 11.2 BTL
3	63598506744	MIKES HARD BLACK CHERRY LEMONADE 6/ 11.2 BTL
4	63848900029	DOGFISH HEAD 60 MINUTE IPA 6/ 12 BTL

Segment # 4 : 4_2 56.00 In

POS	UPC	NAME
1	8769282102	ANGRY ORCHARD CRISP APPLE 6/ 12 BTL
2	8200072385	SMIRNOFF ICE ORIGINAL 6/ 11.2 BTL
3	8200072751	SMIRNOFF ICE GREEN APPLE BITE 6/ 11.2 BTL
4	1820013986	SHOCK TOP BELGIAN WHITE 6/ 12 BTL

Segment # 4 : 4_1 68.00 In

POS	UPC	NAME
1	8834510140	MURPHYS IRISH STOUT 4/ 14.9 CAN
2	8378337521	SIERRA NEVADA PALE ALE 6/ 12 BTL
3	72383000020	LAGUNITAS LITTLE SUMPIN 6/ 12 BTL
4	72383000009	LAGUNITAS IPA 6/ 12 BTL



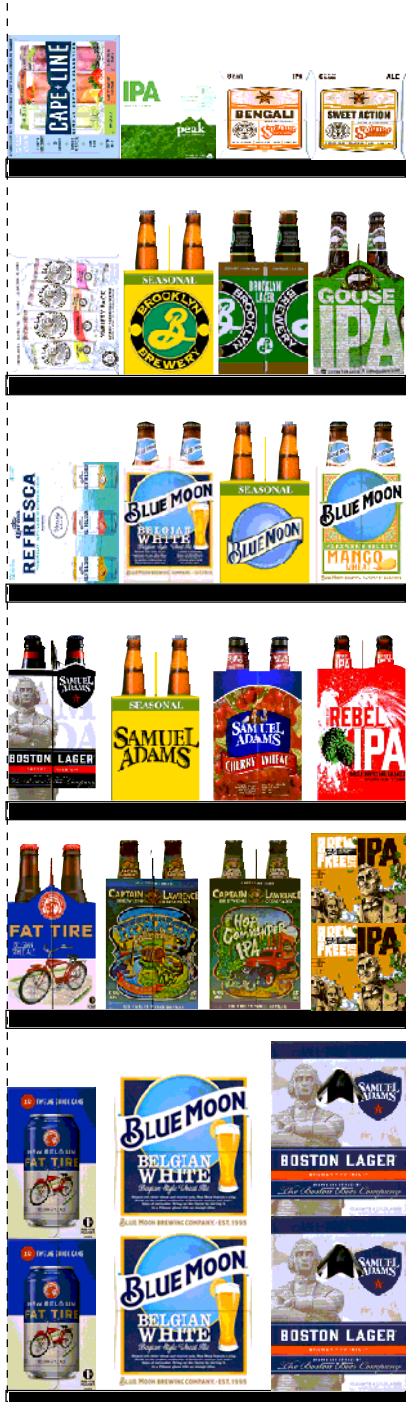
CVS # 2700 COLD

Reset Timing 2019 SPRING

Address: 1402 SHEEPSHEAD BAY RD | City: BROOKLYN | State: NY

REVERSE VIEW (ONLY IF NEEDED)

Segment:
5 of 5



Segment # 5 : 5_6 0.00 In

POS	UPC	NAME
1	8769210014	SAMUEL ADAMS BOSTON LAGER 12/ 12 BTL
2	7199009516	BLUE MOON BELGIAN WHITE 12/ 12 BTL
3	75452700161	NEW BELGIUM FAT TIRE 12/ 12 CAN

Segment # 5 : 5_5 21.00 In

POS	UPC	NAME
1	85961200103	21ST AMENDMENT BREW FREE OR DIE 6/ 12 CAN
2	81760601020	CAPTAIN LAWRENCE IPA 6/ 12 BTL
3	81760601000	CAPTAIN LAWRENCE FRESHCHESTER 6/ 12 BTL
4	75452700022	NEW BELGIUM FAT TIRE 6/ 12 BTL

Segment # 5 : 5_4 32.50 In

POS	UPC	NAME
1	8769200127	SAMUEL ADAMS REBEL IPA 6/ 12 BTL
2	8769227102	SAMUEL ADAMS CHERRY WHEAT ALE 6/ 12 BTL
3	8769230050	SAMUEL ADAMS SEASONAL 6/ 12 BTL (A)
4	8769210012	SAMUEL ADAMS BOSTON LAGER 6/ 12 BTL

Segment # 5 : 5_3 44.50 In

POS	UPC	NAME
1	7199009561	BLUE MOON MANGO WHEAT 6/ 12 BTL
2	7199009532	BLUE MOON SEASONAL 6/ 12 BTL
3	7199009511	BLUE MOON BELGIAN WHITE 6/ 12 BTL
4	3354400013	CORONA REFRESKA VARIETY 12/ 12 CAN

Segment # 5 : 5_2 56.00 In

POS	UPC	NAME
1	73692011132	GOOSE ISLAND IPA 6/ 12 BTL
2	3061300001	BROOKLYN LAGER 6/ 12 BTL
3	3061300053	BROOKLYN SEASONAL 6/ 12 BTL
4	63598554890	WHITE CLAW VARIETY PACK 12/ 12 CAN

Segment # 5 : 5_1 68.00 In

POS	UPC	NAME
1	85909300242	SIXPOINT SWEET ACTION 6/ 12 CAN
2	85909300243	SIXPOINT BENGALI IPA 6/ 12 CAN
3	78036960806	PEAK ORGANIC IPA 6/ 12 CAN
4	3410051681	CAPE LINE VARIETY PACK 12/ 12 CAN



CVS # 2700 COLD

Address: 1402 SHEEPSHEAD BAY RD | City: BROOKLYN | State: NY

Chain/StoreNumer: CVS - EAST 2700

Reset Name: 2019 SPRING

Planogram Name: 2700_5_DOOR_COLD

CVS PHARMA... Store # 2700 H: 6 ft 6.00 in W: 9 ft 2.00 in D: 2 ft # of segments: 5

Name: 1_1 W:22.00 in D:26.50 in Avail Space: 1.43 in Ht Space: 9.00 in

ID	UPC	Barcode	Name	Category	HFacings	Orientation	Units
9452	7089701331	0 70897 01331 5	FOSTERS 1/25.4 CAN	ABOVE PREMIUM	1	Front	8
66064	61300874829	6 13008 74829 6	ARNOLD PALMER SPIKED HAL...	ABOVE PREMIUM	1	Side	9
22227	8797502650	0 87975 02650 1	SAPPORO 1/22 CAN	ABOVE PREMIUM	1	Front	9
15431	8066095721	0 80660 95721 0	MODELO ESPECIAL 1/24 CAN	ABOVE PREMIUM	1	Front	9
15415	8066095643	0 80660 95643 5	CORONA 1/24 CAN	ABOVE PREMIUM	1	Front	9
11327	7289000119	0 72890 00119 1	HEINEKEN 1/24 CAN	ABOVE PREMIUM	1	Front	8
46230	75452700703	7 54527 00703 4	NEW BELGIUM DAYBLAZER 1/...	ABOVE PREMIUM	1	Front	9

Name: 1_2 W:22.00 in D:26.50 in Avail Space: 1.96 in Ht Space: 11.00 in

ID	UPC	Barcode	Name	Category	HFacings	Orientation	Units
2191	2210000004	0 22100 00004 9	PABST 1/24 CAN	ECONOMY	1	Front	9
10412	7199047712	0 71990 47712 7	KEYSTONE ICE 1/24 CAN	ECONOMY	1	Front	9
10243	7199010071	0 71990 10071 1	COORS BANQUET 1/24 CAN	PREMIUM	1	Front	9
10346	7199030065	0 71990 30065 4	COORS LIGHT 1/24 CAN	PREMIUM	1	Front	9
1520	1820025000	0 18200 25000 2	BUD 1/25 CAN	PREMIUM	1	Front	9
1521	1820025001	0 18200 25001 9	BUD LIGHT 1/25 CAN	PREMIUM	1	Front	9
1530	1820025010	0 18200 25010 1	MICHELOB ULTRA 1/25 CAN	ABOVE PREMIUM	1	Front	9

Name: 1_3 W:22.00 in D:26.50 in Avail Space: 1.23 in Ht Space: 11.00 in

ID	UPC	Barcode	Name	Category	HFacings	Orientation	Units
----	-----	---------	------	----------	----------	-------------	-------



CVS # 2700 COLD

Address: 1402 SHEEPSHEAD BAY RD | City: BROOKLYN | State: NY

Chain/StoreNumer: CVS - EAST 2700

Reset Name: 2019 SPRING

Planogram Name: 2700_5_DOOR_COLD

1065	182000784		ODOULS NEAR BEER 6/12 BTL	NA BEER	1	Side	3
3304	3410015505		MILLER 64 6/12 BTL	PREMIUM	1	Side	3
3564	3410057505		LITE 6/12 BTL	PREMIUM	1	Side	3
10372	7199030120		COORS LIGHT 3/24 CAN	PREMIUM	2	Side	6

Name: 1_4 W:22.00 in D:26.50 in Avail Space: 1.46 in Ht Space: 10.50 in

ID	UPC	Barcode	Name	Category	HFacings	Orientation	Units
2241	2210000170		PABST 12/12 CAN	ECONOMY	1	Side 90	4
3552	3410057340		LITE 18/12 CAN	PREMIUM	1	Side 90	2
3579	3410057636		LITE 12/12 CAN	PREMIUM	1	Top 90	3

Name: 1_5 W:22.00 in D:26.50 in Avail Space: 2.25 in Ht Space: 11.00 in

ID	UPC	Barcode	Name	Category	HFacings	Orientation	Units
9886	7143934450		ROLLING ROCK 12/12 CAN	ECONOMY	1	Side	2
3197	3410001505		HIGH LIFE 6/12 BTL	ECONOMY	1	Front	5
3565	3410057509		LITE 12/12 BTL	PREMIUM	1	Side	2

Name: 1_6 W:22.00 in D:26.50 in Avail Space: 2.08 in Ht Space: 19.50 in

ID	UPC	Barcode	Name	Category	HFacings	Orientation	Units
66288	1820028443		NATURAL ICE 15/12 CAN	ECONOMY	1	Side	4
3198	3410001509		HIGH LIFE 12/12 BTL	ECONOMY	1	Side	4
10352	7199030078		COORS LIGHT 18/12 BTL	PREMIUM	1	Side	2

Name: 2_1 W:22.00 in D:26.50 in Avail Space: 1.25 in Ht Space: 9.00 in

ID	UPC	Barcode	Name	Category	HFacings	Orientation	Units
1084	1820000834		BUD 6/12 BTL	PREMIUM	1	Side	3



CVS # 2700 COLD

Address: 1402 SHEEPSHEAD BAY RD | City: BROOKLYN | State: NY

Chain/StoreNumer: CVS - EAST 2700

Reset Name: 2019 SPRING

Planogram Name: 2700_5_DOOR_COLD

15456	8066095881		VICTORIA 6/12 BTL	ABOVE PREMIUM	1	Side	3
15383	8066095301		PACIFICO 6/12 BTL	ABOVE PREMIUM	1	Side	3
17348	8382056793		RED STRIPE LAGER 6/11.2 BTL	ABOVE PREMIUM	1	Side	3

Name: 2_2 W:22.00 in D:26.50 in Avail Space: 1.75 in Ht Space: 11.00 in

ID	UPC	Barcode	Name	Category	HFacings	Orientation	Units
10155	7199000008		COORS LIGHT 6/12 CAN	PREMIUM	1	Side	6
1083	182000833		BUD LIGHT 6/12 BTL	PREMIUM	1	Side	3
67176	1820020079		BUD LIGHT ORANGE 6/12 BTL	ABOVE PREMIUM	1	Side	3
1227	1820005989		MICHELOB ULTRA 6/12 BTL	ABOVE PREMIUM	1	Side	3

Name: 2_3 W:22.00 in D:26.50 in Avail Space: 2.31 in Ht Space: 11.00 in

ID	UPC	Barcode	Name	Category	HFacings	Orientation	Units
10348	7199030069		COORS LIGHT 12/12 BTL	PREMIUM	1	Side	2
1659	1820053047		BUD LIGHT 12/12 CAN	PREMIUM	1	Top 90	3
1228	1820005990		MICHELOB ULTRA 12/12 BTL	ABOVE PREMIUM	1	Side	2

Name: 2_4 W:22.00 in D:26.50 in Avail Space: 2.30 in Ht Space: 10.50 in

ID	UPC	Barcode	Name	Category	HFacings	Orientation	Units
10322	7199030005		COORS LIGHT 6/12 BTL	PREMIUM	1	Side	3
1058	1820000771		BUD 12/12 BTL	PREMIUM	1	Side	2
1056	1820000769		BUD LIGHT 12/12 BTL	PREMIUM	1	Side	2

Name: 2_5 W:22.00 in D:26.50 in Avail Space: 1.82 in Ht Space: 11.00 in

ID	UPC	Barcode	Name	Category	HFacings	Orientation	Units
10164	7199000048		COORS LIGHT 12/12 CAN	PREMIUM	1	Top 90	3



CVS # 2700 COLD

Address: 1402 SHEEPSHEAD BAY RD | City: BROOKLYN | State: NY

Chain/StoreNumer: CVS - EAST 2700

Reset Name: 2019 SPRING

Planogram Name: 2700_5_DOOR_COLD

1297	1820011047		BUD 12/12 CAN	PREMIUM	1	Top 90	3
1307	1820011218		BUD 18/12 CAN	PREMIUM	1	Side	1
1667	1820053218		BUD LIGHT 18/12 CAN	PREMIUM	1	Side	1

Name: 2_6 W:22.00 in D:26.50 in Avail Space: 2.00 in Ht Space: 19.50 in

ID	UPC	Barcode	Name	Category	HFacings	Orientation	Units
10329	7199030017		COORS LIGHT 18/12 CAN	PREMIUM	1	Top 90	3
1310	1820011308		BUD 18/12 BTL	PREMIUM	1	Side	2
1670	1820053308		BUD LIGHT 18/12 BTL	PREMIUM	1	Side	2

Name: 3_1 W:22.00 in D:26.50 in Avail Space: 2.02 in Ht Space: 9.00 in

ID	UPC	Barcode	Name	Category	HFacings	Orientation	Units
17293	8382012360		GUINNESS DRAUGHT STOUT ...	ABOVE PREMIUM	1	Front	5
17284	8382010401		GUINNESS DRAUGHT STOUT ...	ABOVE PREMIUM	1	Side	3
17305	8382012393		GUINNESS EXTRA STOUT 6/12...	ABOVE PREMIUM	1	Side	3
11331	7289000126		MURPHYS IRISH STOUT 4/16 C...	ABOVE PREMIUM	1	Side	5

Name: 3_2 W:22.00 in D:26.50 in Avail Space: 1.12 in Ht Space: 11.00 in

ID	UPC	Barcode	Name	Category	HFacings	Orientation	Units
10813	7231163012		DOS EQUIS 6/12 BTL	ABOVE PREMIUM	1	Side	3
15448	8066095785		MODELO NEGRA 6/12 BTL	ABOVE PREMIUM	1	Side	2
14098	78615000030		LEFFE BLONDE 6/11.2 BTL	ABOVE PREMIUM	1	Side	3
10808	7231163001		PILSNER URQUELL 6/11.2 BTL	ABOVE PREMIUM	1	Side	3

Name: 3_3 W:22.00 in D:26.50 in Avail Space: 1.31 in Ht Space: 11.00 in

ID	UPC	Barcode	Name	Category	HFacings	Orientation	Units
----	-----	---------	------	----------	----------	-------------	-------



CVS # 2700 COLD

Address: 1402 SHEEPSHEAD BAY RD | City: BROOKLYN | State: NY

Chain/StoreNumer: CVS - EAST 2700

Reset Name: 2019 SPRING

Planogram Name: 2700_5_DOOR_COLD

23900	8992427891		YUENGLING LAGER 6/12 BTL	PREMIUM	1	Side	3
15435	8066095755		MODELO ESPECIAL 6/12 CAN	ABOVE PREMIUM	1	Side	6
15421	8066095685		CORONA 6/12 CAN	ABOVE PREMIUM	1	Side	6
16697	8248812377		BECKS 4/16 CAN	ABOVE PREMIUM	1	Front	5

Name: 3_4 W:22.00 in D:26.50 in Avail Space: 0.36 in Ht Space: 10.50 in

ID	UPC	Barcode	Name	Category	HFacings	Orientation	Units
15442	8066095765		MODELO ESPECIAL 6/12 BTL	ABOVE PREMIUM	1	Side	2
15400	8066095605		CORONA 6/12 BTL	ABOVE PREMIUM	1	Side	3
15408	8066095625		CORONA LIGHT 6/12 BTL	ABOVE PREMIUM	1	Side	3
16693	8248812345		BECKS 6/12 BTL	ABOVE PREMIUM	1	Side	3

Name: 3_5 W:22.00 in D:26.50 in Avail Space: 2.24 in Ht Space: 11.00 in

ID	UPC	Barcode	Name	Category	HFacings	Orientation	Units
44952	3354495042		CORONA PREMIER 12/12 BTL	ABOVE PREMIUM	1	Side	2
15426	8066095695		CORONA 12/12 CAN	ABOVE PREMIUM	1	Top 90	3
10790	7231123021		SOL 12/12 BTL	ABOVE PREMIUM	1	Side	2

Name: 3_6 W:22.00 in D:26.50 in Avail Space: 1.57 in Ht Space: 19.50 in

ID	UPC	Barcode	Name	Category	HFacings	Orientation	Units
15429	8066095715		MODELO ESPECIAL 12/12 CAN	ABOVE PREMIUM	1	Side	4
15403	8066095615		CORONA 12/12 BTL	ABOVE PREMIUM	1	Side	4
15416	8066095675		CORONA LIGHT 12/12 BTL	ABOVE PREMIUM	1	Side	4

Name: 4_1 W:22.00 in D:26.50 in Avail Space: 0.59 in Ht Space: 9.00 in

ID	UPC	Barcode	Name	Category	HFacings	Orientation	Units
----	-----	---------	------	----------	----------	-------------	-------



CVS # 2700 COLD

Address: 1402 SHEEPSHEAD BAY RD | City: BROOKLYN | State: NY

Chain/StoreNumer: CVS - EAST 2700

Reset Name: 2019 SPRING

Planogram Name: 2700_5_DOOR_COLD

22451	8834510140	0 88345 10140 8	MURPHYS IRISH STOUT 4/14.9...	ABOVE PREMIUM	1	Front	5
17212	8378337521	0 83783 37521 3	SIERRA NEVADA PALE ALE 6/1...	ABOVE PREMIUM	1	Side	3
10855	72383000020	7 23830 00020 9	LAGUNITAS LITTLE SUMPIN 6/...	ABOVE PREMIUM	1	Side	3
10845	72383000009	7 23830 00009 4	LAGUNITAS IPA 6/12 BTL	ABOVE PREMIUM	1	Side	3

Name: 4_2 W:22.00 in D:26.50 in Avail Space: 2.05 in Ht Space: 11.00 in

ID	UPC	Barcode	Name	Category	HFacings	Orientation	Units
22090	8769282102	0 87692 82102 1	ANGRY ORCHARD CRISP APP...	ABOVE PREMIUM	1	Side	3
16265	8200072385	0 82000 72385 1	SMIRNOFF ICE ORIGINAL 6/11.2...	ABOVE PREMIUM	1	Side	3
16280	8200072751	0 82000 72751 4	SMIRNOFF ICE GREEN APPLE ...	ABOVE PREMIUM	1	Side	3
1345	1820013986	0 18200 13986 4	SHOCK TOP BELGIAN WHITE 6...	ABOVE PREMIUM	1	Side	3

Name: 4_3 W:22.00 in D:26.50 in Avail Space: 2.03 in Ht Space: 10.50 in

ID	UPC	Barcode	Name	Category	HFacings	Orientation	Units
14100	78615000036	7 86150 00036 6	HOEGAARDEN WHITE 6/11.2 B...	ABOVE PREMIUM	1	Side	3
6413	63598510062	6 35985 10062 1	MIKES HARD LEMONADE 6/11....	ABOVE PREMIUM	1	Side	3
6402	63598506744	6 35985 06744 3	MIKES HARD BLACK CHERRY L...	ABOVE PREMIUM	1	Side	3
6748	63848900029	6 38489 00029 9	DOG FISH HEAD 60 MINUTE IPA...	ABOVE PREMIUM	1	Side	3

Name: 4_4 W:22.00 in D:26.50 in Avail Space: 2.89 in Ht Space: 11.00 in

ID	UPC	Barcode	Name	Category	HFacings	Orientation	Units
11341	7289000158	0 72890 00158 0	HEINEKEN LIGHT 6/12 BTL	ABOVE PREMIUM	1	Side	3
568	18195400002	1 81954 00002 2	PERONI 6/11.2 BTL	ABOVE PREMIUM	1	Side	3
22092	8769283102	0 87692 83102 0	TWISTED TEA ORIGINAL 6/12 B...	ABOVE PREMIUM	1	Side	3



CVS # 2700 COLD

Address: 1402 SHEEPSHEAD BAY RD | City: BROOKLYN | State: NY

Chain/StoreNumer: CVS - EAST 2700

Reset Name: 2019 SPRING

Planogram Name: 2700_5_DOOR_COLD

6507	63598525948	6		0	MIKES HARDER BLACKCHERR...	ABOVE PREMIUM	1	Top 90	3
------	-------------	---	--	---	----------------------------	---------------	---	--------	---

Name: 4_5 W:22.00 in D:26.50 in Avail Space: 2.53 in Ht Space: 10.50 in

ID	UPC	Barcode	Name	Category	HFacings	Orientation	Units		
11298	7289000011	0		8	HEINEKEN 6/12 BTL	ABOVE PREMIUM	1	Side	3
11342	7289000159	0		7	HEINEKEN LIGHT 12/12 BTL	ABOVE PREMIUM	1	Side	2
14089	78615000001	7		4	STELLA ARTOIS 6/11.2 BTL	ABOVE PREMIUM	1	Front	5

Name: 4_6 W:22.00 in D:26.50 in Avail Space: 2.23 in Ht Space: 20.00 in

ID	UPC	Barcode	Name	Category	HFacings	Orientation	Units		
11301	7289000020	0		0	HEINEKEN 12/12 CAN	ABOVE PREMIUM	1	Side	4
11300	7289000016	0		3	HEINEKEN 12/12 BTL	ABOVE PREMIUM	1	Side	4
14094	78615000014	7		4	STELLA ARTOIS 12/11.2 BTL	ABOVE PREMIUM	1	Side	4

Name: 5_1 W:22.00 in D:26.50 in Avail Space: 0.24 in Ht Space: 9.00 in

ID	UPC	Barcode	Name	Category	HFacings	Orientation	Units		
21072	85909300242	8		8	SIXPOINT SWEET ACTION 6/12...	ABOVE PREMIUM	1	Side	3
21073	85909300243	8		5	SIXPOINT BENGALI IPA 6/12 CAN	ABOVE PREMIUM	1	Side	3
63311	78036960806	7		1	PEAK ORGANIC IPA 6/12 CAN	ABOVE PREMIUM	1	Side	3
86788	3410051681	0		9	CAPE LINE VARIETY PACK 12/1...	ABOVE PREMIUM	1	Side 90	2

Name: 5_2 W:22.00 in D:26.50 in Avail Space: 0.72 in Ht Space: 11.00 in

ID	UPC	Barcode	Name	Category	HFacings	Orientation	Units		
11951	73692011132	7		7	GOOSE ISLAND IPA 6/12 BTL	ABOVE PREMIUM	1	Side	3
2616	3061300001	0		2	BROOKLYN LAGER 6/12 BTL	ABOVE PREMIUM	1	Side	3
2638	3061300053	0		1	BROOKLYN SEASONAL 6/12 BTL	ABOVE PREMIUM	1	Side	3



CVS # 2700 COLD

Address: 1402 SHEEPSHEAD BAY RD | City: BROOKLYN | State: NY

Chain/StoreNumer: CVS - EAST 2700

Reset Name: 2019 SPRING

Planogram Name: 2700_5_DOOR_COLD

45151	63598554890		WHITE CLAW VARIETY PACK 1...	ABOVE PREMIUM	1	Side 90	2
-------	-------------	--	------------------------------	---------------	---	---------	---

Name: 5_3 W:22.00 in D:26.50 in Avail Space: 0.85 in Ht Space: 10.50 in

ID	UPC	Barcode	Name	Category	HFacings	Orientation	Units
62048	7199009561		BLUE MOON MANGO WHEAT 6...	ABOVE PREMIUM	1	Side	3
10190	7199009532		BLUE MOON SEASONAL 6/12 B...	ABOVE PREMIUM	1	Side	3
10180	7199009511		BLUE MOON BELGIAN WHITE 6...	ABOVE PREMIUM	1	Side	3
86777	3354400013		CORONA REFRESCA VARIETY...	ABOVE PREMIUM	1	Side 90	2

Name: 5_4 W:22.00 in D:26.50 in Avail Space: 2.24 in Ht Space: 11.00 in

ID	UPC	Barcode	Name	Category	HFacings	Orientation	Units
21860	8769200127		SAMUEL ADAMS REBEL IPA 6/...	ABOVE PREMIUM	1	Side	3
21984	8769227102		SAMUEL ADAMS CHERRY WH...	ABOVE PREMIUM	1	Side	3
21995	8769230050		SAMUEL ADAMS SEASONAL 6/...	ABOVE PREMIUM	1	Side	3
21956	8769210012		SAMUEL ADAMS BOSTON LAG...	ABOVE PREMIUM	1	Side	3

Name: 5_5 W:22.00 in D:26.50 in Avail Space: 1.66 in Ht Space: 10.50 in

ID	UPC	Barcode	Name	Category	HFacings	Orientation	Units
21241	85961200103		21ST AMENDMENT BREW FRE...	ABOVE PREMIUM	1	Side	6
15961	81760601020		CAPTAIN LAWRENCE IPA 6/12...	ABOVE PREMIUM	1	Side	3
15955	81760601000		CAPTAIN LAWRENCE FRESHC...	ABOVE PREMIUM	1	Side	3
13009	75452700022		NEW BELGIUM FAT TIRE 6/12 B...	ABOVE PREMIUM	1	Side	3

Name: 5_6 W:22.00 in D:26.50 in Avail Space: 2.09 in Ht Space: 20.00 in

ID	UPC	Barcode	Name	Category	HFacings	Orientation	Units
21957	8769210014		SAMUEL ADAMS BOSTON LAG...	ABOVE PREMIUM	1	Side	4





CVS # 2700 COLD

Address: 1402 SHEEPSHEAD BAY RD | City: BROOKLYN | State: NY

Chain/StoreNumber: CVS - EAST 2700

Reset Name: 2019 SPRING

Planogram Name: 2700_5_DOOR_COLD

10183	7199009516	0		1	BLUE MOON BELGIAN WHITE 1...	ABOVE PREMIUM	1	Side	4
13037	75452700161	7		2	NEW BELGIUM FAT TIRE 12/12 ...	ABOVE PREMIUM	1	Side	4