





CVS # 6054 COLD

Address: 2465 RICHMOND AVE | City: STATEN ISLAND | State: NY

Chain/StoreNumer: CVS - EAST 6054

Reset Name: 2019 SPRING

Planogram Name: 6054_4_DOOR_COLD

Segment # 1 : 1_2 DEPTH: 22 in WIDTH: 23 in DISTANCE FROM TOP OF BASE SHELF TO BOTTOM OF SHELF:28.50 in

POS #	FAC	UPC	NAME	CASES	CAPACITY	UNITS HIGH	Category
1	1	3410057340	LITE 18/12 CAN	1.0	1	1	PREMIUM
2	1	3410057636	LITE 12/12 CAN	1.0	2	1	PREMIUM
3	1	7199030069	COORS LIGHT 12/12 BTL	1.0	2	1	PREMIUM
4	1	7199030005	COORS LIGHT 6/12 BTL	0.5	2	1	PREMIUM

Segment # 1 : 1_1 DEPTH: 22 in WIDTH: 23 in DISTANCE FROM TOP OF BASE SHELF TO BOTTOM OF SHELF:40.50 in

POS #	FAC	UPC	NAME	CASES	CAPACITY	UNITS HIGH	Category
1	1	7199010071	COORS BANQUET 1/24 CAN	0.6	7	1	PREMIUM
2	1	7199030065	COORS LIGHT 1/24 CAN	0.6	7	1	PREMIUM
3	1	7199030120	COORS LIGHT 3/24 CAN	0.5	2	1	PREMIUM
4	1	1820025000	BUD 1/25 CAN	0.5	7	1	PREMIUM
5	1	1820025001	BUD LIGHT 1/25 CAN	0.5	7	1	PREMIUM
6	1	7289000119	HEINEKEN 1/24 CAN	0.6	7	1	ABOVE PREMIUM
7	1	61300874829	ARNOLD PALMER SPIKED HALF AND HALF 1/24 CAN	0.6	7	1	ABOVE PREMIUM

Segment # 1 : 1_4 DEPTH: 22 in WIDTH: 22 in DISTANCE FROM TOP OF BASE SHELF TO BOTTOM OF SHELF:0.00 in

POS #	FAC	UPC	NAME	CASES	CAPACITY	UNITS HIGH	Category
1	1	7199000048	COORS LIGHT 12/12 CAN	5.0	10	1	PREMIUM
2	1	7199030017	COORS LIGHT 18/12 CAN	3.0	3	1	PREMIUM
3	1	7199030078	COORS LIGHT 18/12 BTL	3.0	3	1	PREMIUM

Segment # 2 : 2_3 DEPTH: 22 in WIDTH: 22 in DISTANCE FROM TOP OF BASE SHELF TO BOTTOM OF SHELF:0.00 in

Segment # 2 : 2_4 DEPTH: 22 in WIDTH: 23 in DISTANCE FROM TOP OF BASE SHELF TO BOTTOM OF SHELF:0.00 in

POS #	FAC	UPC	NAME	CASES	CAPACITY	UNITS HIGH	Category
1	1	1820000771	BUD 12/12 BTL	2.0	4	1	PREMIUM
2	1	1820011218	BUD 18/12 CAN	2.0	2	1	PREMIUM
3	1	1820053047	BUD LIGHT 12/12 CAN	2.0	4	1	PREMIUM
4	1	1820053218	BUD LIGHT 18/12 CAN	2.0	2	1	PREMIUM

Segment # 2 : 1_3 DEPTH: 22 in WIDTH: 23 in DISTANCE FROM TOP OF BASE SHELF TO BOTTOM OF SHELF:19.50 in

POS #	FAC	UPC	NAME	CASES	CAPACITY	UNITS HIGH	Category
1	1	1820011047	BUD 12/12 CAN	1.0	2	1	PREMIUM
2	1	1820000769	BUD LIGHT 12/12 BTL	1.0	2	1	PREMIUM
3	1	1820000833	BUD LIGHT 6/12 BTL	0.5	2	1	PREMIUM
4	1	1820018993	BUD LIGHT PLATINUM 6/12 BTL	0.5	2	1	ABOVE PREMIUM

Segment # 2 : 2_2 DEPTH: 22 in WIDTH: 23 in DISTANCE FROM TOP OF BASE SHELF TO BOTTOM OF SHELF:30.00 in

POS #	FAC	UPC	NAME	CASES	CAPACITY	UNITS HIGH	Category
1	1	1820021985	BUD 3/25 CAN	0.5	2	1	PREMIUM
2	1	1820020083	MICHELOB ULTRA PURE GOLD 12/12 BTL	1.0	2	1	ABOVE PREMIUM
3	1	8066095765	MODELO ESPECIAL 6/12 BTL	0.5	2	1	ABOVE PREMIUM
4	1	8066095785	MODELO NEGRA 6/12 BTL	0.5	2	1	ABOVE PREMIUM



CVS # 6054 COLD

Address: 2465 RICHMOND AVE | City: STATEN ISLAND | State: NY

Chain/StoreNumer: CVS - EAST 6054

Reset Name: 2019 SPRING

Planogram Name: 6054_4_DOOR_COLD

Segment # 2 : 2_1 DEPTH: 22 In WIDTH: 23 In DISTANCE FROM TOP OF BASE SHELF TO BOTTOM OF SHELF:40.50 In

POS #	FAC	UPC	NAME	CASES	CAPACITY	UNITS HIGH	Category
1	1	1820021986	BUD LIGHT 3/25 CAN	0.5	2	1	PREMIUM
2	1	3410001509	HIGH LIFE 12/12 BTL	1.0	2	1	ECONOMY
3	1	1820014991	BUD LIGHT LIME 6/12 BTL	0.5	2	1	ABOVE PREMIUM
4	1	1820020079	BUD LIGHT ORANGE 6/12 BTL	0.5	2	1	ABOVE PREMIUM

Segment # 3 : 4_2 DEPTH: 22 In WIDTH: 23 In DISTANCE FROM TOP OF BASE SHELF TO BOTTOM OF SHELF:0.00 In

POS #	FAC	UPC	NAME	CASES	CAPACITY	UNITS HIGH	Category
1	1	8066095715	MODELO ESPECIAL 12/12 CAN	4.0	8	1	ABOVE PREMIUM
2	1	8066095675	CORONA LIGHT 12/12 BTL	4.0	8	1	ABOVE PREMIUM
3	1	8066095615	CORONA 12/12 BTL	4.0	8	1	ABOVE PREMIUM

Segment # 3 : 4_1 DEPTH: 22 In WIDTH: 23 In DISTANCE FROM TOP OF BASE SHELF TO BOTTOM OF SHELF:40.50 In

POS #	FAC	UPC	NAME	CASES	CAPACITY	UNITS HIGH	Category
1	1	1820005989	MICHELOB ULTRA 6/12 BTL	0.5	2	1	ABOVE PREMIUM
2	1	3354400013	CORONA REFRESCA VARIETY 12/12 CAN	1.0	2	1	ABOVE PREMIUM
3	1	3410051681	CAPE LINE VARIETY PACK 12/12 CAN	1.0	2	1	ABOVE PREMIUM
4	1	8066095605	CORONA 6/12 BTL	0.5	2	1	ABOVE PREMIUM

Segment # 4 : 3_4 DEPTH: 22 In WIDTH: 23 In DISTANCE FROM TOP OF BASE SHELF TO BOTTOM OF SHELF:0.00 In

POS #	FAC	UPC	NAME	CASES	CAPACITY	UNITS HIGH	Category
1	1	7289000016	HEINEKEN 12/12 BTL	2.0	4	1	ABOVE PREMIUM
2	1	78615000014	STELLA ARTOIS 12/11.2 BTL	2.0	4	1	ABOVE PREMIUM
3	1	7199009516	BLUE MOON BELGIAN WHITE 12/12 BTL	2.0	4	1	ABOVE PREMIUM

Segment # 4 : 3_3 DEPTH: 22 In WIDTH: 23 In DISTANCE FROM TOP OF BASE SHELF TO BOTTOM OF SHELF:19.50 In

POS #	FAC	UPC	NAME	CASES	CAPACITY	UNITS HIGH	Category
1	1	18195400002	PERONI 6/11.2 BTL	0.8	3	1	ABOVE PREMIUM
2	1	7289000158	HEINEKEN LIGHT 6/12 BTL	0.8	3	1	ABOVE PREMIUM
3	1	7289000011	HEINEKEN 6/12 BTL	0.8	3	1	ABOVE PREMIUM
4	1	78615000001	STELLA ARTOIS 6/11.2 BTL	0.8	3	1	ABOVE PREMIUM

Segment # 4 : 3_2 DEPTH: 22 In WIDTH: 23 In DISTANCE FROM TOP OF BASE SHELF TO BOTTOM OF SHELF:30.00 In

POS #	FAC	UPC	NAME	CASES	CAPACITY	UNITS HIGH	Category
1	1	63598554890	WHITE CLAW VARIETY PACK 12/12 CAN	1.5	3	1	ABOVE PREMIUM
2	1	8769282102	ANGRY ORCHARD CRISP APPLE 6/12 BTL	0.8	3	1	ABOVE PREMIUM
3	1	75452700022	NEW BELGIUM FAT TIRE 6/12 BTL	0.5	2	1	ABOVE PREMIUM
4	1	7199009511	BLUE MOON BELGIAN WHITE 6/12 BTL	0.5	2	1	ABOVE PREMIUM

Segment # 4 : 3_1 DEPTH: 22 In WIDTH: 23 In DISTANCE FROM TOP OF BASE SHELF TO BOTTOM OF SHELF:40.50 In

POS #	FAC	UPC	NAME	CASES	CAPACITY	UNITS HIGH	Category
1	1	3354495042	CORONA PREMIER 12/12 BTL	1.0	2	1	ABOVE PREMIUM
2	1	63598510062	MIKES HARD LEMONADE 6/11.2 BTL	0.5	2	1	ABOVE PREMIUM



CVS # 6054 COLD

Address: 2465 RICHMOND AVE | City: STATEN ISLAND | State: NY

Chain/StoreNumber: CVS - EAST 6054

Reset Name: 2019 SPRING

Planogram Name: 6054_4_DOOR_COLD

3	1	81760601020	CAPTAIN LAWRENCE IPA 6/12 BTL	0.5	2	1	ABOVE PREMIUM
4	1	3061300001	BROOKLYN LAGER 6/12 BTL	0.5	2	1	ABOVE PREMIUM

REVERSE VIEW (ONLY IF NEEDED)





CVS # 6054 COLD

Reset Timing 2019 SPRING

Address: 2465 RICHMOND AVE | City: STATEN ISLAND | State: NY

REVERSE VIEW (ONLY IF NEEDED)

Segment:
1 of 4



Segment # 1 : 1_2 28.50 In

POS	UPC	NAME
1	3410057340	LITE 18/ 12 CAN
2	3410057636	LITE 12/ 12 CAN
3	7199030069	COORS LIGHT 12/ 12 BTL
4	7199030005	COORS LIGHT 6/ 12 BTL

Segment # 1 : 1_1 40.50 In

POS	UPC	NAME
1	7199010071	COORS BANQUET 1/24 CAN
2	7199030065	COORS LIGHT 1/ 24 CAN
3	7199030120	COORS LIGHT 3/ 24 CAN
4	1820025000	BUD 1/ 25 CAN
5	1820025001	BUD LIGHT 1/ 25 CAN
6	7289000119	HEINEKEN 1/ 24 CAN
7	61300874829	ARNOLD PALMER SPIKED HALF AND HALF 1/ 24 CAN

Segment # 1 : 1_4 0.00 In

POS	UPC	NAME
1	7199000048	COORS LIGHT 12/ 12 CAN
2	7199030017	COORS LIGHT 18/ 12 CAN
3	7199030078	COORS LIGHT 18/ 12 BTL

Segment # 2 : 2_3 0.00 In



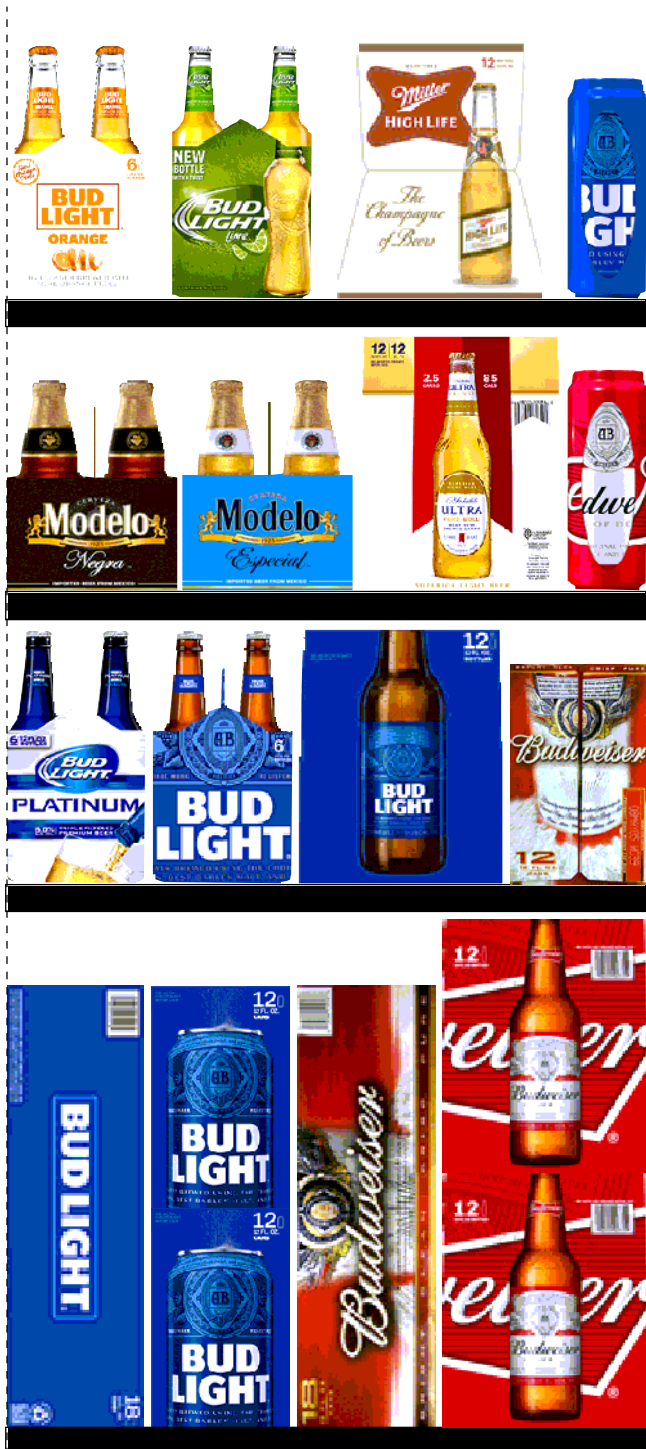
CVS # 6054 COLD

Reset Timing 2019 SPRING

Address: 2465 RICHMOND AVE | City: STATEN ISLAND | State: NY

REVERSE VIEW (ONLY IF NEEDED)

Segment:
2 of 4



Segment # 2 : 2_3 0.00 In

Segment # 2 : 2_4 0.00 In

POS	UPC	NAME
1	182000771	BUD 12/ 12 BTL
2	1820011218	BUD 18/ 12 CAN
3	1820053047	BUD LIGHT 12/ 12 CAN
4	1820053218	BUD LIGHT 18/ 12 CAN

Segment # 2 : 1_3 19.50 In

POS	UPC	NAME
1	1820011047	BUD 12/ 12 CAN
2	1820000769	BUD LIGHT 12/ 12 BTL
3	1820000833	BUD LIGHT 6/ 12 BTL
4	1820018993	BUD LIGHT PLATINUM 6/ 12 BTL

Segment # 2 : 2_2 30.00 In

POS	UPC	NAME
1	1820021985	BUD 3/ 25 CAN
2	1820020083	MICHELOB ULTRA PURE GOLD 12/ 12 BTL
3	8066095765	MODELO ESPECIAL 6/ 12 BTL
4	8066095785	MODELO NEGRA 6/ 12 BTL

Segment # 2 : 2_1 40.50 In

POS	UPC	NAME
1	1820021986	BUD LIGHT 3/ 25 CAN
2	3410001509	HIGH LIFE 12/ 12 BTL
3	1820014991	BUD LIGHT LIME 6/ 12 BTL
4	1820020079	BUD LIGHT ORANGE 6/ 12 BTL

REVERSE VIEW (ONLY IF NEEDED)

Segment:
3 of 4

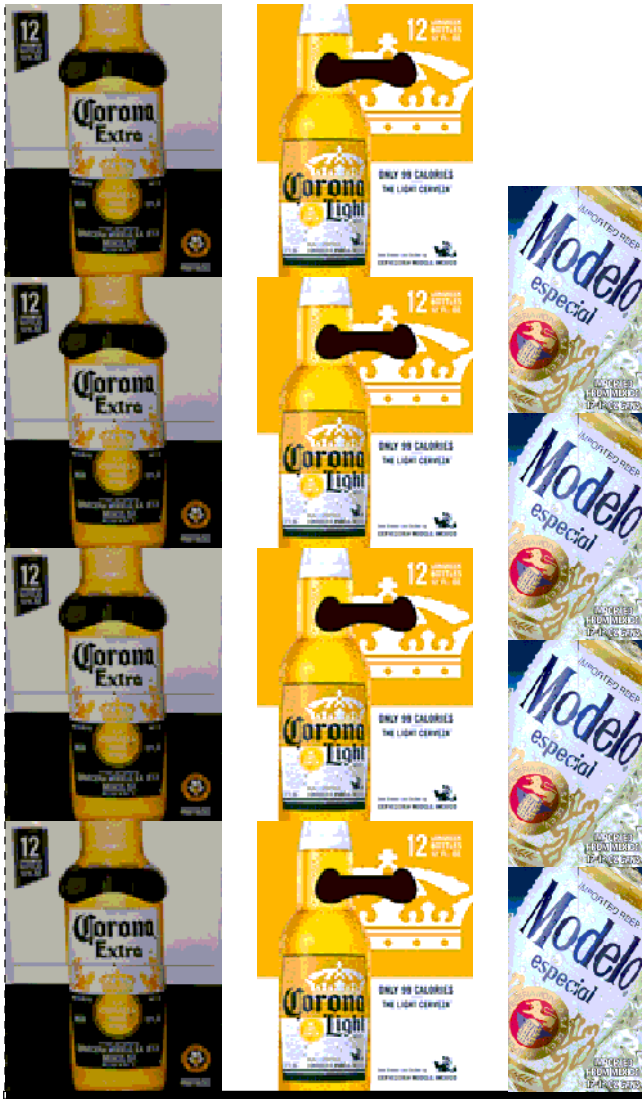


Segment # 3 : 4_2 0.00 In

POS	UPC	NAME
1	8066095715	MODELO ESPECIAL 12/ 12 CAN
2	8066095675	CORONA LIGHT 12/ 12 BTL
3	8066095615	CORONA 12/ 12 BTL

Segment # 3 : 4_1 40.50 In

POS	UPC	NAME
1	1820005989	MICHELOB ULTRA 6/ 12 BTL
2	3354400013	CORONA REFRESCA VARIETY 12/ 12 CAN
3	3410051681	CAPE LINE VARIETY PACK 12/ 12 CAN
4	8066095605	CORONA 6/ 12 BTL





CVS # 6054 COLD

Reset Timing 2019 SPRING

Address: 2465 RICHMOND AVE | City: STATEN ISLAND | State: NY

REVERSE VIEW (ONLY IF NEEDED)

Segment:
4 of 4



Segment # 4 : 3_4 0.00 In

POS	UPC	NAME
1	7289000016	HEINEKEN 12/ 12 BTL
2	78615000014	STELLA ARTOIS 12/ 11.2 BTL
3	7199009516	BLUE MOON BELGIAN WHITE 12/ 12 BTL

Segment # 4 : 3_3 19.50 In

POS	UPC	NAME
1	18195400002	PERONI 6/ 11.2 BTL
2	7289000158	HEINEKEN LIGHT 6/ 12 BTL
3	7289000011	HEINEKEN 6/ 12 BTL
4	78615000001	STELLA ARTOIS 6/ 11.2 BTL

Segment # 4 : 3_2 30.00 In

POS	UPC	NAME
1	63598554890	WHITE CLAW VARIETY PACK 12/ 12 CAN
2	8769282102	ANGRY ORCHARD CRISP APPLE 6/ 12 BTL
3	75452700022	NEW BELGIUM FAT TIRE 6/ 12 BTL
4	7199009511	BLUE MOON BELGIAN WHITE 6/ 12 BTL

Segment # 4 : 3_1 40.50 In

POS	UPC	NAME
1	3354495042	CORONA PREMIER 12/ 12 BTL
2	63598510062	MIKES HARD LEMONADE 6/ 11.2 BTL
3	81760601020	CAPTAIN LAWRENCE IPA 6/ 12 BTL
4	3061300001	BROOKLYN LAGER 6/ 12 BTL



CVS # 6054 COLD

Address: 2465 RICHMOND AVE | City: STATEN ISLAND | State: NY

Chain/StoreNumer: CVS - EAST 6054

Reset Name: 2019 SPRING

Planogram Name: 6054_4_DOOR_COLD

CVS PHARMA... Store # 6054 H: 4 ft 4.00 in W: 7 ft 8.00 in D: 1 ft 10.00 in # of segments: 4

Name: 1_1 W:23.00 in D:22.00 in Avail Space: 2.82 in Ht Space: 10.50 in

ID	UPC	Barcode	Name	Category	HFacings	Orientation	Units
10243	7199010071		COORS BANQUET 1/24 CAN	PREMIUM	1	Front	7
10346	7199030065		COORS LIGHT 1/24 CAN	PREMIUM	1	Front	7
10372	7199030120		COORS LIGHT 3/24 CAN	PREMIUM	1	Side	2
1520	1820025000		BUD 1/25 CAN	PREMIUM	1	Front	7
1521	1820025001		BUD LIGHT 1/25 CAN	PREMIUM	1	Front	7
11327	7289000119		HEINEKEN 1/24 CAN	ABOVE PREMIUM	1	Front	7
66064	61300874829		ARNOLD PALMER SPIKED HAL...	ABOVE PREMIUM	1	Side	7

Name: 1_2 W:23.00 in D:22.00 in Avail Space: 0.86 in Ht Space: 11.00 in

ID	UPC	Barcode	Name	Category	HFacings	Orientation	Units
3552	3410057340		LITE 18/12 CAN	PREMIUM	1	Side	1
3579	3410057636		LITE 12/12 CAN	PREMIUM	1	Side	2
10348	7199030069		COORS LIGHT 12/12 BTL	PREMIUM	1	Side	2
10322	7199030005		COORS LIGHT 6/12 BTL	PREMIUM	1	Side	2

Name: 1_4 W:22.00 in D:22.00 in Avail Space: 1.48 in Ht Space: 28.00 in

ID	UPC	Barcode	Name	Category	HFacings	Orientation	Units
10164	7199000048		COORS LIGHT 12/12 CAN	PREMIUM	1	Side 90	10
10329	7199030017		COORS LIGHT 18/12 CAN	PREMIUM	1	Side	3
10352	7199030078		COORS LIGHT 18/12 BTL	PREMIUM	1	Side	3

Name: 2_3 W:22.00 in D:22.00 in Avail Space: 22.00 in Ht Space: 19.00 in



CVS # 6054 COLD

Address: 2465 RICHMOND AVE | City: STATEN ISLAND | State: NY

Chain/StoreNumer: CVS - EAST 6054

Reset Name: 2019 SPRING

Planogram Name: 6054_4_DOOR_COLD

Name: 2_1		W:23.00 in	D:22.00 in	Avail Space: 2.68 in		Ht Space: 10.50 in	
ID	UPC	Barcode	Name	Category	HFacings	Orientation	Units
1475	1820021986		BUD LIGHT 3/25 CAN	PREMIUM	1	Side	2
3198	3410001509		HIGH LIFE 12/12 BTL	ECONOMY	1	Side	2
1357	1820014991		BUD LIGHT LIME 6/12 BTL	ABOVE PREMIUM	1	Side	2
67176	1820020079		BUD LIGHT ORANGE 6/12 BTL	ABOVE PREMIUM	1	Side	2

Name: 2_2		W:23.00 in	D:22.00 in	Avail Space: 0.53 in		Ht Space: 9.50 in	
ID	UPC	Barcode	Name	Category	HFacings	Orientation	Units
1474	1820021985		BUD 3/25 CAN	PREMIUM	1	Side	2
65828	1820020083		MICHELOB ULTRA PURE GOLD...	ABOVE PREMIUM	1	Side	2
15442	8066095765		MODELO ESPECIAL 6/12 BTL	ABOVE PREMIUM	1	Side	2
15448	8066095785		MODELO NEGRA 6/12 BTL	ABOVE PREMIUM	1	Side	2

Name: 1_3		W:23.00 in	D:22.00 in	Avail Space: 0.62 in		Ht Space: 9.50 in	
ID	UPC	Barcode	Name	Category	HFacings	Orientation	Units
1297	1820011047		BUD 12/12 CAN	PREMIUM	1	Side	2
1056	1820000769		BUD LIGHT 12/12 BTL	PREMIUM	1	Side	2
1083	1820000833		BUD LIGHT 6/12 BTL	PREMIUM	1	Side	2
1429	1820018993		BUD LIGHT PLATINUM 6/12 BTL	ABOVE PREMIUM	1	Side	2

Name: 2_4		W:23.00 in	D:22.00 in	Avail Space: 0.80 in		Ht Space: 18.50 in	
ID	UPC	Barcode	Name	Category	HFacings	Orientation	Units
1058	1820000771		BUD 12/12 BTL	PREMIUM	1	Side	4
1307	1820011218		BUD 18/12 CAN	PREMIUM	1	Top 90	2



CVS # 6054 COLD

Address: 2465 RICHMOND AVE | City: STATEN ISLAND | State: NY

Chain/StoreNumer: CVS - EAST 6054

Reset Name: 2019 SPRING

Planogram Name: 6054_4_DOOR_COLD

1659	1820053047		BUD LIGHT 12/12 CAN	PREMIUM	1	Side	4
1667	1820053218		BUD LIGHT 18/12 CAN	PREMIUM	1	Top 90	2

Name: 4_1 W:23.00 in D:22.00 in Avail Space: 0.31 in Ht Space: 10.50 in

ID	UPC	Barcode	Name	Category	HFacings	Orientation	Units
1227	1820005989		MICHELOB ULTRA 6/12 BTL	ABOVE PREMIUM	1	Side	2
86777	3354400013		CORONA REFRESCA VARIETY...	ABOVE PREMIUM	1	Side 90	2
86788	3410051681		CAPE LINE VARIETY PACK 12/1...	ABOVE PREMIUM	1	Side 90	2
15400	8066095605		CORONA 6/12 BTL	ABOVE PREMIUM	1	Side	2

Name: 4_2 W:23.00 in D:22.00 in Avail Space: 2.57 in Ht Space: 40.00 in

ID	UPC	Barcode	Name	Category	HFacings	Orientation	Units
15429	8066095715		MODELO ESPECIAL 12/12 CAN	ABOVE PREMIUM	1	Side	8
15416	8066095675		CORONA LIGHT 12/12 BTL	ABOVE PREMIUM	1	Side	8
15403	8066095615		CORONA 12/12 BTL	ABOVE PREMIUM	1	Side	8

Name: 3_1 W:23.00 in D:22.00 in Avail Space: 0.15 in Ht Space: 10.50 in

ID	UPC	Barcode	Name	Category	HFacings	Orientation	Units
44952	3354495042		CORONA PREMIER 12/12 BTL	ABOVE PREMIUM	1	Side	2
6413	63598510062		MIKES HARD LEMONADE 6/11....	ABOVE PREMIUM	1	Side	2
15961	81760601020		CAPTAIN LAWRENCE IPA 6/12 ...	ABOVE PREMIUM	1	Side	2
2616	3061300001		BROOKLYN LAGER 6/12 BTL	ABOVE PREMIUM	1	Side	2

Name: 3_2 W:23.00 in D:22.00 in Avail Space: 2.02 in Ht Space: 9.50 in

ID	UPC	Barcode	Name	Category	HFacings	Orientation	Units
45151	63598554890		WHITE CLAW VARIETY PACK 1...	ABOVE PREMIUM	1	Front 90	3



CVS # 6054 COLD

Address: 2465 RICHMOND AVE | City: STATEN ISLAND | State: NY

Chain/StoreNumer: CVS - EAST 6054

Reset Name: 2019 SPRING

Planogram Name: 6054_4_DOOR_COLD

22090	8769282102	0		1	ANGRY ORCHARD CRISP APP...	ABOVE PREMIUM	1	Side	3
13009	75452700022	7		6	NEW BELGIUM FAT TIRE 6/12 B...	ABOVE PREMIUM	1	Side	2
10180	7199009511	0		6	BLUE MOON BELGIAN WHITE 6...	ABOVE PREMIUM	1	Top 90	2

Name: 3_3 W:23.00 in D:22.00 in Avail Space: 3.46 in Ht Space: 9.50 in

ID	UPC	Barcode	Name	Category	HFacings	Orientation	Units		
568	18195400002	1		2	PERONI 6/11.2 BTL	ABOVE PREMIUM	1	Side	3
11341	7289000158	0		0	HEINEKEN LIGHT 6/12 BTL	ABOVE PREMIUM	1	Side	3
11298	7289000011	0		8	HEINEKEN 6/12 BTL	ABOVE PREMIUM	1	Side	3
14089	78615000001	7		4	STELLA ARTOIS 6/11.2 BTL	ABOVE PREMIUM	1	Side	3

Name: 3_4 W:23.00 in D:22.00 in Avail Space: 0.66 in Ht Space: 19.00 in

ID	UPC	Barcode	Name	Category	HFacings	Orientation	Units		
11300	7289000016	0		3	HEINEKEN 12/12 BTL	ABOVE PREMIUM	1	Side	4
14094	78615000014	7		4	STELLA ARTOIS 12/11.2 BTL	ABOVE PREMIUM	1	Side	4
10183	7199009516	0		1	BLUE MOON BELGIAN WHITE 1...	ABOVE PREMIUM	1	Side	4





CVS # 6054 WARM

Address: 2465 RICHMOND AVE | City: STATEN ISLAND | State: NY

Chain/StoreNumer: CVS - EAST 6054

Reset Name: 2019 SPRING

Planogram Name: 6054_7ft_OPEN_WARM

Segment # 1 : 1_4 DEPTH: 24 in WIDTH: 80 in DISTANCE FROM TOP OF BASE SHELF TO BOTTOM OF SHELF:0.00 in

POS # FAC	UPC	NAME	CASES	CAPACITY	UNITS HIGH	Category
1 1	7199030078	COORS LIGHT 18/12 BTL	2.0	2	1	PREMIUM
2 1	7199000048	COORS LIGHT 12/12 CAN	2.0	4	1	PREMIUM
3 1	7199030017	COORS LIGHT 18/12 CAN	3.0	3	1	PREMIUM
4 1	1820011047	BUD 12/12 CAN	2.0	4	1	PREMIUM
5 1	1820011218	BUD 18/12 CAN	3.0	3	1	PREMIUM
6 1	1820053047	BUD LIGHT 12/12 CAN	2.0	4	1	PREMIUM
7 1	1820053218	BUD LIGHT 18/12 CAN	3.0	3	1	PREMIUM
8 1	8066095675	CORONA LIGHT 12/12 BTL	2.0	4	1	ABOVE PREMIUM
9 1	8066095615	CORONA 12/12 BTL	2.0	4	1	ABOVE PREMIUM
10 1	7289000159	HEINEKEN LIGHT 12/12 BTL	2.0	4	1	ABOVE PREMIUM
11 1	7289000016	HEINEKEN 12/12 BTL	2.0	4	1	ABOVE PREMIUM
12 1	78615000014	STELLA ARTOIS 12/11.2 BTL	2.0	4	1	ABOVE PREMIUM

Segment # 1 : 1_3 DEPTH: 24 in WIDTH: 80 in DISTANCE FROM TOP OF BASE SHELF TO BOTTOM OF SHELF:21.00 in

POS # FAC	UPC	NAME	CASES	CAPACITY	UNITS HIGH	Category
1 1	7199030069	COORS LIGHT 12/12 BTL	1.0	2	1	PREMIUM
2 1	1820000771	BUD 12/12 BTL	1.0	2	1	PREMIUM
3 1	1820000769	BUD LIGHT 12/12 BTL	1.0	2	1	PREMIUM
4 1	1820005990	MICHELOB ULTRA 12/12 BTL	1.0	2	1	ABOVE PREMIUM
5 1	8066095765	MODELO ESPECIAL 6/12 BTL	0.8	3	1	ABOVE PREMIUM
6 1	8066095715	MODELO ESPECIAL 12/12 CAN	1.0	2	1	ABOVE PREMIUM
7 1	8066095695	CORONA 12/12 CAN	1.5	3	1	ABOVE PREMIUM
8 1	8066095625	CORONA LIGHT 6/12 BTL	1.0	4	1	ABOVE PREMIUM
9 1	8066095605	CORONA 6/12 BTL	1.0	4	1	ABOVE PREMIUM
10 1	7289000011	HEINEKEN 6/12 BTL	1.0	4	1	ABOVE PREMIUM
11 1	78615000001	STELLA ARTOIS 6/11.2 BTL	1.0	4	1	ABOVE PREMIUM

Segment # 1 : 1_2 DEPTH: 24 in WIDTH: 80 in DISTANCE FROM TOP OF BASE SHELF TO BOTTOM OF SHELF:34.00 in

POS # FAC	UPC	NAME	CASES	CAPACITY	UNITS HIGH	Category
1 1	7199030005	COORS LIGHT 6/12 BTL	1.0	4	1	PREMIUM
2 1	1820021985	BUD 3/25 CAN	2.0	8	1	PREMIUM
3 1	1820021986	BUD LIGHT 3/25 CAN	2.0	8	1	PREMIUM
4 1	1820000833	BUD LIGHT 6/12 BTL	0.8	3	1	PREMIUM
5 1	1820018993	BUD LIGHT PLATINUM 6/12 BTL	0.8	3	1	ABOVE PREMIUM
6 1	1820014991	BUD LIGHT LIME 6/12 BTL	0.8	3	1	ABOVE PREMIUM
7 1	8382012393	GUINNESS EXTRA STOUT 6/12 BTL	1.3	5	1	ABOVE PREMIUM
8 1	8066095755	MODELO ESPECIAL 6/12 CAN	1.5	6	1	ABOVE PREMIUM
9 1	7289000020	HEINEKEN 12/12 CAN	1.5	3	1	ABOVE PREMIUM
10 1	8769230050	SAMUEL ADAMS SEASONAL 6/12 BTL (A)	1.0	4	1	ABOVE PREMIUM
11 1	7199009511	BLUE MOON BELGIAN WHITE 6/12 BTL	1.0	4	1	ABOVE PREMIUM
12 1	7199009516	BLUE MOON BELGIAN WHITE 12/12 BTL	1.0	2	1	ABOVE PREMIUM

Segment # 1 : 1_1 DEPTH: 24 in WIDTH: 80 in DISTANCE FROM TOP OF BASE SHELF TO BOTTOM OF SHELF:46.50 in

POS # FAC	UPC	NAME	CASES	CAPACITY	UNITS HIGH	Category
1 1	2210000170	PABST 12/12 CAN	2.0	4	1	ECONOMY
2 1	1820000834	BUD 6/12 BTL	1.0	4	1	PREMIUM
3 1	1820005989	MICHELOB ULTRA 6/12 BTL	0.8	3	1	ABOVE PREMIUM
4 1	63598510062	MIKES HARD LEMONADE 6/11.2 BTL	1.0	4	1	ABOVE PREMIUM



CVS # 6054 WARM

Address: 2465 RICHMOND AVE | City: STATEN ISLAND | State: NY

Chain/StoreNumber: CVS - EAST 6054

Reset Name: 2019 SPRING

Planogram Name: 6054_7ft_OPEN_WARM

5	1	63598506744	MIKES HARD BLACK CHERRY LEMONADE 6/11.2 BTL	1.0	4	1	ABOVE PREMIUM
6	1	8769282102	ANGRY ORCHARD CRISP APPLE 6/12 BTL	0.8	3	1	ABOVE PREMIUM
7	1	72383000009	LAGUNITAS IPA 6/12 BTL	1.0	4	1	ABOVE PREMIUM
8	1	3061300019	BROOKLYN EAST IPA 6/12 BTL	1.0	4	1	ABOVE PREMIUM
9	1	3061300001	BROOKLYN LAGER 6/12 BTL	0.8	3	1	ABOVE PREMIUM
10	1	3061300053	BROOKLYN SEASONAL 6/12 BTL	0.8	3	1	ABOVE PREMIUM
11	1	7199009532	BLUE MOON SEASONAL 6/12 BTL	0.8	3	1	ABOVE PREMIUM
12	1	8769210012	SAMUEL ADAMS BOSTON LAGER 6/12 BTL	1.0	4	1	ABOVE PREMIUM

REVERSE VIEW (ONLY IF NEEDED)





CVS # 6054 WARM

Reset Timing 2019 SPRING

Address: 2465 RICHMOND AVE | City: STATEN ISLAND | State: NY

REVERSE VIEW (ONLY IF NEEDED)

Segment:
1 of 1



Segment # 1 : 1_4 0.00 In

POS	UPC	NAME
1	7199030078	COORS LIGHT 18/ 12 BTL
2	7199000048	COORS LIGHT 12/ 12 CAN
3	7199030017	COORS LIGHT 18/ 12 CAN
4	1820011047	BUD 12/ 12 CAN
5	1820011218	BUD 18/ 12 CAN
6	1820053047	BUD LIGHT 12/ 12 CAN
7	1820053218	BUD LIGHT 18/ 12 CAN
8	8066095675	CORONA LIGHT 12/ 12 BTL
9	8066095615	CORONA 12/ 12 BTL
10	7289000159	HEINEKEN LIGHT 12/ 12 BTL
11	7289000016	HEINEKEN 12/ 12 BTL
12	78615000014	STELLA ARTOIS 12/ 11.2 BTL

Segment # 1 : 1_3 21.00 In

POS	UPC	NAME
1	7199030069	COORS LIGHT 12/ 12 BTL
2	1820000771	BUD 12/ 12 BTL
3	1820000769	BUD LIGHT 12/ 12 BTL
4	1820005990	MICHELOB ULTRA 12/ 12 BTL
5	8066095765	MODELO ESPECIAL 6/ 12 BTL
6	8066095715	MODELO ESPECIAL 12/ 12 CAN
7	8066095695	CORONA 12/ 12 CAN
8	8066095625	CORONA LIGHT 6/ 12 BTL
9	8066095605	CORONA 6/ 12 BTL
10	7289000011	HEINEKEN 6/ 12 BTL
11	78615000001	STELLA ARTOIS 6/ 11.2 BTL

Segment # 1 : 1_2 34.00 In

POS	UPC	NAME
1	7199030005	COORS LIGHT 6/ 12 BTL
2	1820021985	BUD 3/ 25 CAN
3	1820021986	BUD LIGHT 3/ 25 CAN
4	1820000833	BUD LIGHT 6/ 12 BTL
5	1820018993	BUD LIGHT PLATINUM 6/ 12 BTL
6	1820014991	BUD LIGHT LIME 6/ 12 BTL
7	8382012393	GUINNESS EXTRA STOUT 6/ 12 BTL
8	8066095755	MODELO ESPECIAL 6/ 12 CAN
9	7289000020	HEINEKEN 12/ 12 CAN
10	8769230050	SAMUEL ADAMS SEASONAL 6/ 12 BTL (A)
11	7199009511	BLUE MOON BELGIAN WHITE 6/ 12 BTL
12	7199009516	BLUE MOON BELGIAN WHITE 12/ 12 BTL

Segment # 1 : 1_1 46.50 In

POS	UPC	NAME
1	2210000170	PABST 12/ 12 CAN
2	1820000834	BUD 6/ 12 BTL
3	1820005989	MICHELOB ULTRA 6/ 12 BTL
4	63598510062	MIKES HARD LEMONADE 6/ 11.2 BTL
5	63598506744	MIKES HARD BLACK CHERRY LEMONADE 6/ 11.2 BTL
6	8769282102	ANGRY ORCHARD CRISP APPLE 6/ 12 BTL
7	72383000009	LAGUNITAS IPA 6/ 12 BTL
8	3061300019	BROOKLYN EAST IPA 6/ 12 BTL
9	3061300001	BROOKLYN LAGER 6/ 12 BTL
10	3061300053	BROOKLYN SEASONAL 6/ 12 BTL
11	7199009532	BLUE MOON SEASONAL 6/ 12 BTL
12	8769210012	SAMUEL ADAMS BOSTON LAGER 6/ 12 BTL



CVS # 6054 WARM

Address: 2465 RICHMOND AVE | City: STATEN ISLAND | State: NY

Chain/StoreNumer: CVS - EAST 6054

Reset Name: 2019 SPRING

Planogram Name: 6054_7ft_OPEN_WARM

CVS PHARMA... Store # 6054 H: 4 ft 4.00 in W: 6 ft 8.00 in D: 1 ft 10.00 in # of segments: 1

Name: 1_1 W:80.00 in D:24.00 in Avail Space: 1.73 in Ht Space: 4.50 in

ID	UPC	Barcode	Name	Category	HFacings	Orientation	Units
2241	221000170		PABST 12/12 CAN	ECONOMY	1	Side 90	4
1084	1820000834		BUD 6/12 BTL	PREMIUM	1	Front	4
1227	1820005989		MICHELOB ULTRA 6/12 BTL	ABOVE PREMIUM	1	Side	3
6413	63598510062		MIKES HARD LEMONADE 6/11....	ABOVE PREMIUM	1	Front	4
6402	63598506744		MIKES HARD BLACK CHERRY L...	ABOVE PREMIUM	1	Front	4
22090	8769282102		ANGRY ORCHARD CRISP APP...	ABOVE PREMIUM	1	Side	3
10845	72383000009		LAGUNITAS IPA 6/12 BTL	ABOVE PREMIUM	1	Front	4
2625	3061300019		BROOKLYN EAST IPA 6/12 BTL	ABOVE PREMIUM	1	Front	4
2616	3061300001		BROOKLYN LAGER 6/12 BTL	ABOVE PREMIUM	1	Side	3
2638	3061300053		BROOKLYN SEASONAL 6/12 BTL	ABOVE PREMIUM	1	Side	3
10190	7199009532		BLUE MOON SEASONAL 6/12 B...	ABOVE PREMIUM	1	Side	3
21956	8769210012		SAMUEL ADAMS BOSTON LAG...	ABOVE PREMIUM	1	Front	4

Name: 1_2 W:80.00 in D:24.00 in Avail Space: 0.65 in Ht Space: 11.50 in

ID	UPC	Barcode	Name	Category	HFacings	Orientation	Units
10322	7199030005		COORS LIGHT 6/12 BTL	PREMIUM	1	Front	4
1474	1820021985		BUD 3/25 CAN	PREMIUM	1	Front	8
1475	1820021986		BUD LIGHT 3/25 CAN	PREMIUM	1	Front	8



CVS # 6054 WARM

Address: 2465 RICHMOND AVE | City: STATEN ISLAND | State: NY

Chain/StoreNumer: CVS - EAST 6054

Reset Name: 2019 SPRING

Planogram Name: 6054_7ft_OPEN_WARM

1083	182000833		BUD LIGHT 6/12 BTL	PREMIUM	1	Side	3
1429	1820018993		BUD LIGHT PLATINUM 6/12 BTL	ABOVE PREMIUM	1	Side	3
1357	1820014991		BUD LIGHT LIME 6/12 BTL	ABOVE PREMIUM	1	Side	3
17305	8382012393		GUINNESS EXTRA STOUT 6/12...	ABOVE PREMIUM	1	Front	5
15435	8066095755		MODELO ESPECIAL 6/12 CAN	ABOVE PREMIUM	1	Side	6
11301	7289000020		HEINEKEN 12/12 CAN	ABOVE PREMIUM	1	Top 90	3
21995	8769230050		SAMUEL ADAMS SEASONAL 6/...	ABOVE PREMIUM	1	Front	4
10180	7199009511		BLUE MOON BELGIAN WHITE 6...	ABOVE PREMIUM	1	Front	4
10183	7199009516		BLUE MOON BELGIAN WHITE 1...	ABOVE PREMIUM	1	Side	2

Name: 1_3 W:80.00 in D:24.00 in Avail Space: 1.57 in Ht Space: 12.00 in

ID	UPC	Barcode	Name	Category	HFacings	Orientation	Units
10348	7199030069		COORS LIGHT 12/12 BTL	PREMIUM	1	Side	2
1058	1820000771		BUD 12/12 BTL	PREMIUM	1	Side	2
1056	1820000769		BUD LIGHT 12/12 BTL	PREMIUM	1	Side	2
1228	1820005990		MICHELOB ULTRA 12/12 BTL	ABOVE PREMIUM	1	Side	2
15442	8066095765		MODELO ESPECIAL 6/12 BTL	ABOVE PREMIUM	1	Front	3
15429	8066095715		MODELO ESPECIAL 12/12 CAN	ABOVE PREMIUM	1	Top 90	2
15426	8066095695		CORONA 12/12 CAN	ABOVE PREMIUM	1	Top 90	3
15408	8066095625		CORONA LIGHT 6/12 BTL	ABOVE PREMIUM	1	Front	4



CVS # 6054 WARM

Address: 2465 RICHMOND AVE | City: STATEN ISLAND | State: NY

Chain/StoreNumer: CVS - EAST 6054

Reset Name: 2019 SPRING

Planogram Name: 6054_7ft_OPEN_WARM

15400	8066095605		CORONA 6/12 BTL	ABOVE PREMIUM	1	Front	4
11298	7289000011		HEINEKEN 6/12 BTL	ABOVE PREMIUM	1	Front	4
14089	78615000001		STELLA ARTOIS 6/11.2 BTL	ABOVE PREMIUM	1	Front	4

Name: 1_4 W:80.00 in D:24.00 in Avail Space: 2.02 in Ht Space: 20.50 in

ID	UPC	Barcode	Name	Category	HFacings	Orientation	Units
10352	7199030078		COORS LIGHT 18/12 BTL	PREMIUM	1	Side	2
10164	7199000048		COORS LIGHT 12/12 CAN	PREMIUM	1	Side	4
10329	7199030017		COORS LIGHT 18/12 CAN	PREMIUM	1	Side 90	3
1297	1820011047		BUD 12/12 CAN	PREMIUM	1	Side	4
1307	1820011218		BUD 18/12 CAN	PREMIUM	1	Top 90	3
1659	1820053047		BUD LIGHT 12/12 CAN	PREMIUM	1	Side	4
1667	1820053218		BUD LIGHT 18/12 CAN	PREMIUM	1	Top 90	3
15416	8066095675		CORONA LIGHT 12/12 BTL	ABOVE PREMIUM	1	Side	4
15403	8066095615		CORONA 12/12 BTL	ABOVE PREMIUM	1	Side	4
11342	7289000159		HEINEKEN LIGHT 12/12 BTL	ABOVE PREMIUM	1	Side	4
11300	7289000016		HEINEKEN 12/12 BTL	ABOVE PREMIUM	1	Side	4
14094	78615000014		STELLA ARTOIS 12/11.2 BTL	ABOVE PREMIUM	1	Side	4