





CVS # 6053 COLD

Address: 2045 FOREST AVE | City: STATEN ISLAND | State: NY

Chain/StoreNumer: CVS - EAST 6053

Reset Name: 2019 SPRING

Planogram Name: 6053\_3\_DOOR\_COLD

Segment # 1 : 1_4 DEPTH: 24 in WIDTH: 23 in DISTANCE FROM TOP OF BASE SHELF TO BOTTOM OF SHELF:0.00 in							
POS #	FAC	UPC	NAME	CASES	CAPACITY	UNITS HIGH	Category
1	1	78615000014	STELLA ARTOIS 12/11.2 BTL	2.0	4	1	ABOVE PREMIUM
2	1	8248812300	BECKS 12/12 BTL	2.0	4	1	ABOVE PREMIUM
3	1	7289000016	HEINEKEN 12/12 BTL	2.0	4	1	ABOVE PREMIUM

Segment # 1 : 1_3 DEPTH: 24 in WIDTH: 23 in DISTANCE FROM TOP OF BASE SHELF TO BOTTOM OF SHELF:19.50 in							
POS #	FAC	UPC	NAME	CASES	CAPACITY	UNITS HIGH	Category
1	1	78615000001	STELLA ARTOIS 6/11.2 BTL	0.8	3	1	ABOVE PREMIUM
2	1	7289000158	HEINEKEN LIGHT 6/12 BTL	0.8	3	1	ABOVE PREMIUM
3	1	18195400002	PERONI 6/11.2 BTL	0.8	3	1	ABOVE PREMIUM
4	1	7289000011	HEINEKEN 6/12 BTL	0.8	3	1	ABOVE PREMIUM

Segment # 1 : 1_2 DEPTH: 24 in WIDTH: 23 in DISTANCE FROM TOP OF BASE SHELF TO BOTTOM OF SHELF:30.50 in							
POS #	FAC	UPC	NAME	CASES	CAPACITY	UNITS HIGH	Category
1	1	75452700022	NEW BELGIUM FAT TIRE 6/12 BTL	0.8	3	1	ABOVE PREMIUM
2	1	7199009511	BLUE MOON BELGIAN WHITE 6/12 BTL	0.8	3	1	ABOVE PREMIUM
3	1	3061300001	BROOKLYN LAGER 6/12 BTL	0.8	3	1	ABOVE PREMIUM
4	1	8769282102	ANGRY ORCHARD CRISP APPLE 6/12 BTL	0.8	3	1	ABOVE PREMIUM

Segment # 1 : 1_1 DEPTH: 24 in WIDTH: 23 in DISTANCE FROM TOP OF BASE SHELF TO BOTTOM OF SHELF:41.00 in							
POS #	FAC	UPC	NAME	CASES	CAPACITY	UNITS HIGH	Category
1	1	8769210012	SAMUEL ADAMS BOSTON LAGER 6/12 BTL	0.8	3	1	ABOVE PREMIUM
2	1	8769230050	SAMUEL ADAMS SEASONAL 6/12 BTL (A)	0.8	3	1	ABOVE PREMIUM
3	1	73692011132	GOOSE ISLAND IPA 6/12 BTL	0.8	3	1	ABOVE PREMIUM
4	1	1820013986	SHOCK TOP BELGIAN WHITE 6/12 BTL	0.8	3	1	ABOVE PREMIUM

Segment # 2 : 2_4 DEPTH: 24 in WIDTH: 25 in DISTANCE FROM TOP OF BASE SHELF TO BOTTOM OF SHELF:0.00 in							
POS #	FAC	UPC	NAME	CASES	CAPACITY	UNITS HIGH	Category
1	1	8066095615	CORONA 12/12 BTL	2.5	5	1	ABOVE PREMIUM
2	1	8066095715	MODELO ESPECIAL 12/12 CAN	2.0	4	1	ABOVE PREMIUM
3	1	1820053047	BUD LIGHT 12/12 CAN	2.0	4	1	PREMIUM
4	1	1820053218	BUD LIGHT 18/12 CAN	3.0	3	1	PREMIUM

Segment # 2 : 2_5 DEPTH: 24 in WIDTH: 25 in DISTANCE FROM TOP OF BASE SHELF TO BOTTOM OF SHELF:0.00 in							
--	--	--	--	--	--	--	--

Segment # 2 : 2_3 DEPTH: 24 in WIDTH: 25 in DISTANCE FROM TOP OF BASE SHELF TO BOTTOM OF SHELF:19.00 in							
POS #	FAC	UPC	NAME	CASES	CAPACITY	UNITS HIGH	Category
1	1	3354495042	CORONA PREMIER 12/12 BTL	1.0	2	1	ABOVE PREMIUM
2	1	8066095675	CORONA LIGHT 12/12 BTL	1.0	2	1	ABOVE PREMIUM
3	1	7231123021	SOL 12/12 BTL	1.0	2	1	ABOVE PREMIUM

Segment # 2 : 2_2 DEPTH: 24 in WIDTH: 25 in DISTANCE FROM TOP OF BASE SHELF TO BOTTOM OF SHELF:30.00 in							
POS #	FAC	UPC	NAME	CASES	CAPACITY	UNITS HIGH	Category



CVS # 6053 COLD

Address: 2045 FOREST AVE | City: STATEN ISLAND | State: NY

Chain/StoreNumer: CVS - EAST 6053

Reset Name: 2019 SPRING

Planogram Name: 6053\_3\_DOOR\_COLD

1	1	8382056793	RED STRIPE LAGER 6/11.2 BTL	0.5	2	1	ABOVE PREMIUM
2	1	8066095605	CORONA 6/12 BTL	0.8	3	1	ABOVE PREMIUM
3	1	8066095625	CORONA LIGHT 6/12 BTL	0.8	3	1	ABOVE PREMIUM
4	1	1820020079	BUD LIGHT ORANGE 6/12 BTL	0.8	3	1	ABOVE PREMIUM

**Segment # 2 : 2\_1 DEPTH: 24 in WIDTH: 25 in DISTANCE FROM TOP OF BASE SHELF TO BOTTOM OF SHELF:41.00 in**

POS	# FAC	UPC	NAME	CASES	CAPACITY	UNITS HIGH	Category
1	1	3354400013	CORONA REFRESCA VARIETY 12/12 CAN	1.0	2	1	ABOVE PREMIUM
2	1	3410051681	CAPE LINE VARIETY PACK 12/12 CAN	1.0	2	1	ABOVE PREMIUM
3	1	63598510062	MIKES HARD LEMONADE 6/11.2 BTL	0.8	3	1	ABOVE PREMIUM
4	1	63598506744	MIKES HARD BLACK CHERRY LEMONADE 6/11.2 BTL	0.8	3	1	ABOVE PREMIUM

**Segment # 3 : 3\_4 DEPTH: 24 in WIDTH: 23 in DISTANCE FROM TOP OF BASE SHELF TO BOTTOM OF SHELF:0.00 in**

POS	# FAC	UPC	NAME	CASES	CAPACITY	UNITS HIGH	Category
1	1	1820011218	BUD 18/12 CAN	3.0	3	1	PREMIUM
2	1	1820011047	BUD 12/12 CAN	2.0	4	1	PREMIUM
3	1	7199030017	COORS LIGHT 18/12 CAN	3.0	3	1	PREMIUM
4	1	3410001509	HIGH LIFE 12/12 BTL	2.0	4	1	ECONOMY

**Segment # 3 : 3\_3 DEPTH: 24 in WIDTH: 23 in DISTANCE FROM TOP OF BASE SHELF TO BOTTOM OF SHELF:19.00 in**

POS	# FAC	UPC	NAME	CASES	CAPACITY	UNITS HIGH	Category
1	1	1820000769	BUD LIGHT 12/12 BTL	1.0	2	1	PREMIUM
2	1	7199000048	COORS LIGHT 12/12 CAN	1.5	3	1	PREMIUM
3	1	3410057636	LITE 12/12 CAN	1.5	3	1	PREMIUM
4	1	3410001505	HIGH LIFE 6/12 BTL	0.8	3	1	ECONOMY

**Segment # 3 : 3\_2 DEPTH: 24 in WIDTH: 23 in DISTANCE FROM TOP OF BASE SHELF TO BOTTOM OF SHELF:31.00 in**

POS	# FAC	UPC	NAME	CASES	CAPACITY	UNITS HIGH	Category
1	1	1820000833	BUD LIGHT 6/12 BTL	0.8	3	1	PREMIUM
2	1	1820000771	BUD 12/12 BTL	1.0	2	1	PREMIUM
3	1	7199030069	COORS LIGHT 12/12 BTL	1.0	2	1	PREMIUM
4	1	7199030120	COORS LIGHT 3/24 CAN	0.5	2	1	PREMIUM

**Segment # 3 : 3\_1 DEPTH: 24 in WIDTH: 23 in DISTANCE FROM TOP OF BASE SHELF TO BOTTOM OF SHELF:42.00 in**

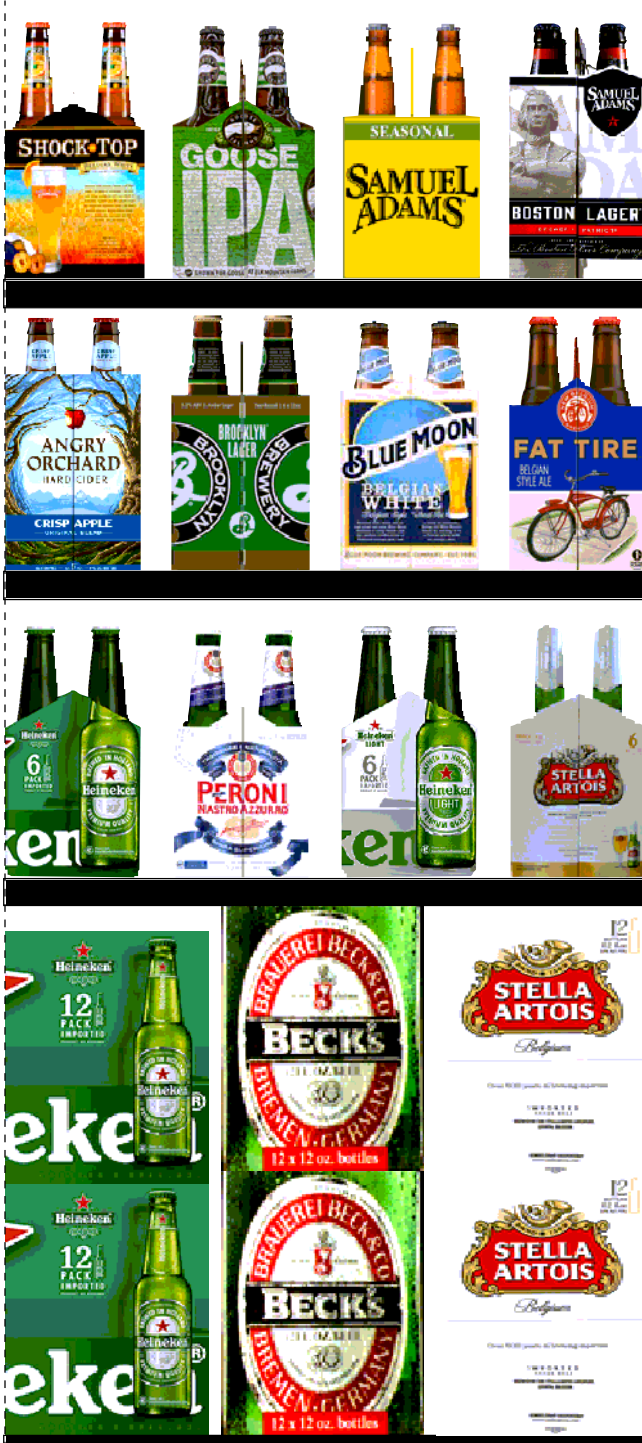
POS	# FAC	UPC	NAME	CASES	CAPACITY	UNITS HIGH	Category
1	1	7089701331	FOSTERS 1/25.4 CAN	0.6	7	1	ABOVE PREMIUM
2	1	61300874829	ARNOLD PALMER SPIKED HALF AND HALF 1/24 CAN	0.7	8	1	ABOVE PREMIUM
3	1	8066095643	CORONA 1/24 CAN	0.7	8	1	ABOVE PREMIUM
4	1	1820025001	BUD LIGHT 1/25 CAN	0.5	8	1	PREMIUM
5	1	1820025000	BUD 1/25 CAN	0.5	8	1	PREMIUM
6	1	7199030065	COORS LIGHT 1/24 CAN	0.7	8	1	PREMIUM
7	1	7199010071	COORS BANQUET 1/24 CAN	0.7	8	1	PREMIUM

# REVERSE VIEW (ONLY IF NEEDED)



**REVERSE VIEW (ONLY IF NEEDED)**

Segment:  
1 of 3



**Segment # 1 : 1\_4 0.00 In**

POS	UPC	NAME
1	7861500014	STELLA ARTOIS 12/ 11.2 BTL
2	8248812300	BECKS 12/ 12 BTL
3	7289000016	HEINEKEN 12/ 12 BTL

**Segment # 1 : 1\_3 19.50 In**

POS	UPC	NAME
1	7861500001	STELLA ARTOIS 6/ 11.2 BTL
2	7289000158	HEINEKEN LIGHT 6/ 12 BTL
3	18195400002	PERONI 6/ 11.2 BTL
4	7289000011	HEINEKEN 6/ 12 BTL

**Segment # 1 : 1\_2 30.50 In**

POS	UPC	NAME
1	75452700022	NEW BELGIUM FAT TIRE 6/ 12 BTL
2	7199009511	BLUE MOON BELGIAN WHITE 6/ 12 BTL
3	3061300001	BROOKLYN LAGER 6/ 12 BTL
4	8769282102	ANGRY ORCHARD CRISP APPLE 6/ 12 BTL

**Segment # 1 : 1\_1 41.00 In**

POS	UPC	NAME
1	8769210012	SAMUEL ADAMS BOSTON LAGER 6/ 12 BTL
2	8769230050	SAMUEL ADAMS SEASONAL 6/ 12 BTL (A)
3	73692011132	GOOSE ISLAND IPA 6/ 12 BTL
4	1820013986	SHOCK TOP BELGIAN WHITE 6/ 12 BTL



CVS # 6053 COLD

Reset Timing 2019 SPRING

Address: 2045 FOREST AVE | City: STATEN ISLAND | State: NY

**REVERSE VIEW (ONLY IF NEEDED)**

Segment:  
2 of 3



**Segment # 2 : 2\_4 0.00 In**

POS	UPC	NAME
1	8066095615	CORONA 12/ 12 BTL
2	8066095715	MODELO ESPECIAL 12/ 12 CAN
3	1820053047	BUD LIGHT 12/ 12 CAN
4	1820053218	BUD LIGHT 18/ 12 CAN

**Segment # 2 : 2\_5 0.00 In**

**Segment # 2 : 2\_3 19.00 In**

POS	UPC	NAME
1	3354495042	CORONA PREMIER 12/ 12 BTL
2	8066095675	CORONA LIGHT 12/ 12 BTL
3	7231123021	SOL 12/ 12 BTL

**Segment # 2 : 2\_2 30.00 In**

POS	UPC	NAME
1	8382056793	RED STRIPE LAGER 6/ 11.2 BTL
2	8066095605	CORONA 6/ 12 BTL
3	8066095625	CORONA LIGHT 6/ 12 BTL
4	1820020079	BUD LIGHT ORANGE 6/ 12 BTL

**Segment # 2 : 2\_1 41.00 In**

POS	UPC	NAME
1	3354400013	CORONA REFRESCA VARIETY 12/ 12 CAN
2	3410051681	CAPE LINE VARIETY PACK 12/ 12 CAN
3	63598510062	MIKES HARD LEMONADE 6/ 11.2 BTL
4	63598506744	MIKES HARD BLACK CHERRY LEMONADE 6/ 11.2 BTL



CVS # 6053 COLD

Reset Timing 2019 SPRING

Address: 2045 FOREST AVE | City: STATEN ISLAND | State: NY

**REVERSE VIEW (ONLY IF NEEDED)**

Segment:  
3 of 3



**Segment # 3 : 3\_4 0.00 In**

POS	UPC	NAME
1	1820011218	BUD 18/ 12 CAN
2	1820011047	BUD 12/ 12 CAN
3	7199030017	COORS LIGHT 18/ 12 CAN
4	3410001509	HIGH LIFE 12/ 12 BTL

**Segment # 3 : 3\_3 19.00 In**

POS	UPC	NAME
1	1820000769	BUD LIGHT 12/ 12 BTL
2	7199000048	COORS LIGHT 12/ 12 CAN
3	3410057636	LITE 12/ 12 CAN
4	3410001505	HIGH LIFE 6/ 12 BTL

**Segment # 3 : 3\_2 31.00 In**

POS	UPC	NAME
1	1820000833	BUD LIGHT 6/ 12 BTL
2	1820000771	BUD 12/ 12 BTL
3	7199030069	COORS LIGHT 12/ 12 BTL
4	7199030120	COORS LIGHT 3/ 24 CAN

**Segment # 3 : 3\_1 42.00 In**

POS	UPC	NAME
1	7089701331	FOSTERS 1/ 25.4 CAN
2	61300874829	ARNOLD PALMER SPIKED HALF AND HALF 1/ 24 CAN
3	8066095643	CORONA 1/ 24 CAN
4	1820025001	BUD LIGHT 1/ 25 CAN
5	1820025000	BUD 1/ 25 CAN
6	7199030065	COORS LIGHT 1/ 24 CAN
7	7199010071	COORS BANQUET 1/ 24 CAN



CVS # 6053 COLD

Address: 2045 FOREST AVE | City: STATEN ISLAND | State: NY

Chain/StoreNumer: CVS - EAST 6053

Reset Name: 2019 SPRING

Planogram Name: 6053\_3\_DOOR\_COLD

CVS PHARMA... Store # 6053 H: 4 ft 4.00 in W: 5 ft 11.00 in D: 1 ft 10.00 in # of segments: 3

Name: 1\_1 W:23.00 in D:24.00 in Avail Space: 2.92 in Ht Space: 10.00 in

ID	UPC	Barcode	Name	Category	HFacings	Orientation	Units
21956	8769210012	0 87692 10012 6	SAMUEL ADAMS BOSTON LAG...	ABOVE PREMIUM	1	Side	3
21995	8769230050	0 87692 30050 2	SAMUEL ADAMS SEASONAL 6/...	ABOVE PREMIUM	1	Side	3
11951	73692011132	7 36920 11132 7	GOOSE ISLAND IPA 6/12 BTL	ABOVE PREMIUM	1	Side	3
1345	1820013986	0 18200 13986 4	SHOCK TOP BELGIAN WHITE 6...	ABOVE PREMIUM	1	Side	3

Name: 1\_2 W:23.00 in D:24.00 in Avail Space: 3.17 in Ht Space: 9.50 in

ID	UPC	Barcode	Name	Category	HFacings	Orientation	Units
13009	75452700022	7 54527 00022 6	NEW BELGIUM FAT TIRE 6/12 B...	ABOVE PREMIUM	1	Side	3
10180	7199009511	0 71990 09511 6	BLUE MOON BELGIAN WHITE 6...	ABOVE PREMIUM	1	Side	3
2616	3061300001	0 30613 00001 2	BROOKLYN LAGER 6/12 BTL	ABOVE PREMIUM	1	Side	3
22090	8769282102	0 87692 82102 1	ANGRY ORCHARD CRISP APP...	ABOVE PREMIUM	1	Side	3

Name: 1\_3 W:23.00 in D:24.00 in Avail Space: 3.46 in Ht Space: 10.00 in

ID	UPC	Barcode	Name	Category	HFacings	Orientation	Units
14089	78615000001	7 86150 00001 4	STELLA ARTOIS 6/11.2 BTL	ABOVE PREMIUM	1	Side	3
11341	7289000158	0 72890 00158 0	HEINEKEN LIGHT 6/12 BTL	ABOVE PREMIUM	1	Side	3
568	18195400002	1 81954 00002 2	PERONI 6/11.2 BTL	ABOVE PREMIUM	1	Side	3
11298	7289000011	0 72890 00011 8	HEINEKEN 6/12 BTL	ABOVE PREMIUM	1	Side	3

Name: 1\_4 W:23.00 in D:24.00 in Avail Space: 0.92 in Ht Space: 19.00 in

ID	UPC	Barcode	Name	Category	HFacings	Orientation	Units
14094	78615000014	7 86150 00014 4	STELLA ARTOIS 12/11.2 BTL	ABOVE PREMIUM	1	Side	4
16691	8248812300	0 82488 12300 6	BECKS 12/12 BTL	ABOVE PREMIUM	1	Side	4





CVS # 6053 COLD

Address: 2045 FOREST AVE | City: STATEN ISLAND | State: NY

Chain/StoreNumer: CVS - EAST 6053

Reset Name: 2019 SPRING

Planogram Name: 6053\_3\_DOOR\_COLD

11300	7289000016		HEINEKEN 12/12 BTL	ABOVE PREMIUM	1	Side	4
-------	------------	--	--------------------	---------------	---	------	---

Name: 2\_1 W:25.00 in D:24.00 in Avail Space: 2.74 in Ht Space: 10.00 in

ID	UPC	Barcode	Name	Category	HFacings	Orientation	Units
86777	3354400013		CORONA REFRESCA VARIETY...	ABOVE PREMIUM	1	Side 90	2
86788	3410051681		CAPE LINE VARIETY PACK 12/1...	ABOVE PREMIUM	1	Side 90	2
6413	63598510062		MIKES HARD LEMONADE 6/11....	ABOVE PREMIUM	1	Side	3
6402	63598506744		MIKES HARD BLACK CHERRY L...	ABOVE PREMIUM	1	Side	3

Name: 2\_2 W:25.00 in D:24.00 in Avail Space: 3.92 in Ht Space: 10.00 in

ID	UPC	Barcode	Name	Category	HFacings	Orientation	Units
17348	8382056793		RED STRIPE LAGER 6/11.2 BTL	ABOVE PREMIUM	1	Side	2
15400	8066095605		CORONA 6/12 BTL	ABOVE PREMIUM	1	Side	3
15408	8066095625		CORONA LIGHT 6/12 BTL	ABOVE PREMIUM	1	Side	3
67176	1820020079		BUD LIGHT ORANGE 6/12 BTL	ABOVE PREMIUM	1	Side	3

Name: 2\_3 W:25.00 in D:24.00 in Avail Space: 2.39 in Ht Space: 10.00 in

ID	UPC	Barcode	Name	Category	HFacings	Orientation	Units
44952	3354495042		CORONA PREMIER 12/12 BTL	ABOVE PREMIUM	1	Side	2
15416	8066095675		CORONA LIGHT 12/12 BTL	ABOVE PREMIUM	1	Side	2
10790	7231123021		SOL 12/12 BTL	ABOVE PREMIUM	1	Side	2

Name: 2\_5 W:25.00 in D:24.00 in Avail Space: 25.00 in Ht Space: 19.00 in

Name: 2\_4 W:25.00 in D:24.00 in Avail Space: 0.17 in Ht Space: 18.50 in

ID	UPC	Barcode	Name	Category	HFacings	Orientation	Units
15403	8066095615		CORONA 12/12 BTL	ABOVE PREMIUM	1	Front	5
15429	8066095715		MODELO ESPECIAL 12/12 CAN	ABOVE PREMIUM	1	Side	4



CVS # 6053 COLD

Address: 2045 FOREST AVE | City: STATEN ISLAND | State: NY

Chain/StoreNumer: CVS - EAST 6053

Reset Name: 2019 SPRING

Planogram Name: 6053\_3\_DOOR\_COLD

1659	1820053047		BUD LIGHT 12/12 CAN	PREMIUM	1	Side	4
1667	1820053218		BUD LIGHT 18/12 CAN	PREMIUM	1	Top 90	3

Name: 3\_1 W:23.00 in D:24.00 in Avail Space: 2.50 in Ht Space: 9.00 in

ID	UPC	Barcode	Name	Category	HFacings	Orientation	Units
9452	7089701331		FOSTERS 1/25.4 CAN	ABOVE PREMIUM	1	Front	7
66064	61300874829		ARNOLD PALMER SPIKED HAL...	ABOVE PREMIUM	1	Side	8
15415	8066095643		CORONA 1/24 CAN	ABOVE PREMIUM	1	Front	8
1521	1820025001		BUD LIGHT 1/25 CAN	PREMIUM	1	Front	8
1520	1820025000		BUD 1/25 CAN	PREMIUM	1	Front	8
10346	7199030065		COORS LIGHT 1/24 CAN	PREMIUM	1	Front	8
10243	7199010071		COORS BANQUET 1/24 CAN	PREMIUM	1	Front	8

Name: 3\_2 W:23.00 in D:24.00 in Avail Space: 0.30 in Ht Space: 10.00 in

ID	UPC	Barcode	Name	Category	HFacings	Orientation	Units
1083	1820000833		BUD LIGHT 6/12 BTL	PREMIUM	1	Side	3
1058	1820000771		BUD 12/12 BTL	PREMIUM	1	Side	2
10348	7199030069		COORS LIGHT 12/12 BTL	PREMIUM	1	Side	2
10372	7199030120		COORS LIGHT 3/24 CAN	PREMIUM	1	Side	2

Name: 3\_3 W:23.00 in D:24.00 in Avail Space: 0.44 in Ht Space: 11.00 in

ID	UPC	Barcode	Name	Category	HFacings	Orientation	Units
1056	1820000769		BUD LIGHT 12/12 BTL	PREMIUM	1	Side	2
10164	7199000048		COORS LIGHT 12/12 CAN	PREMIUM	1	Top 90	3



CVS # 6053 COLD

Address: 2045 FOREST AVE | City: STATEN ISLAND | State: NY

Chain/StoreNumer: CVS - EAST 6053

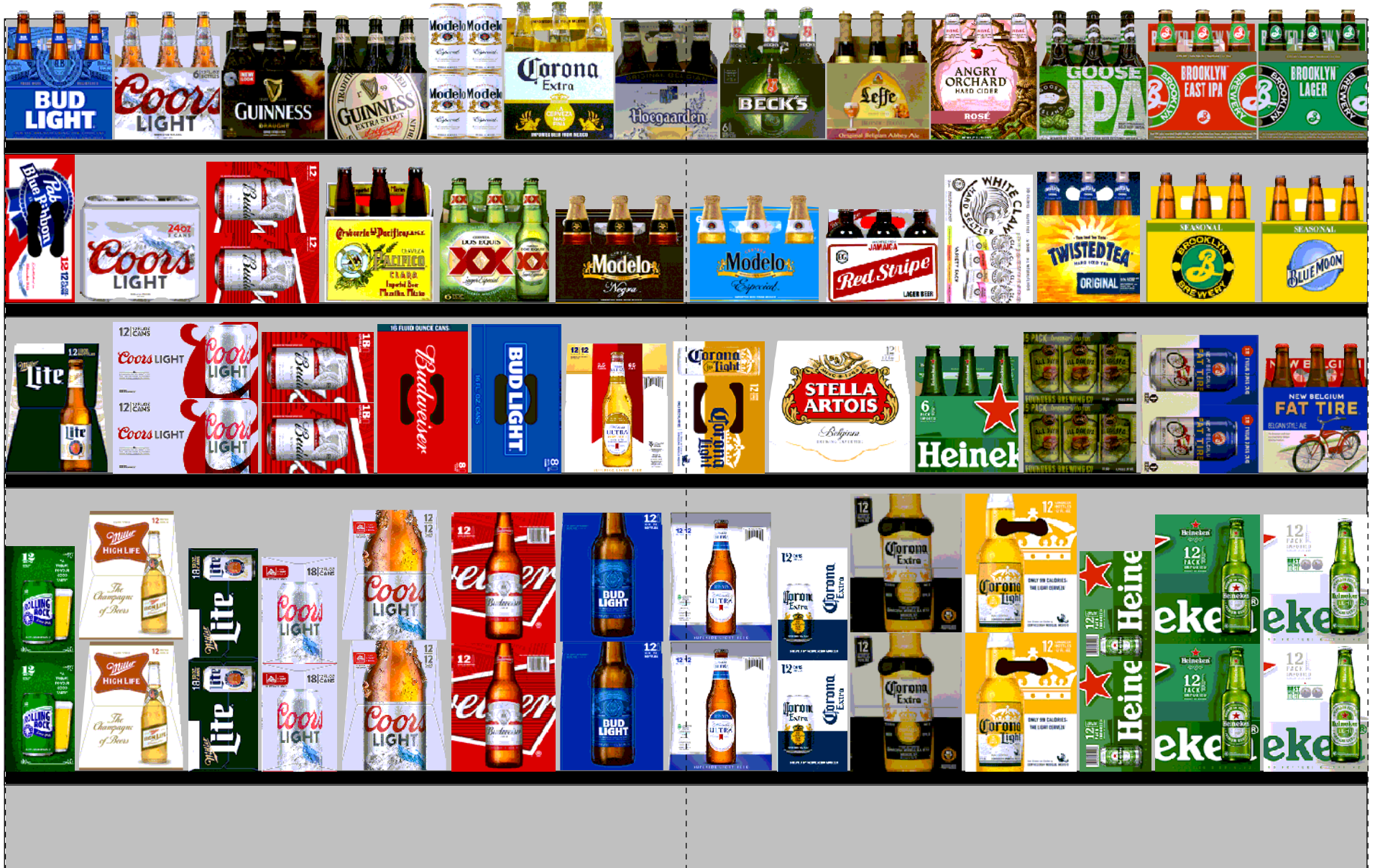
Reset Name: 2019 SPRING

Planogram Name: 6053\_3\_DOOR\_COLD

3579	3410057636		LITE 12/12 CAN	PREMIUM	1	Top 90	3
3197	3410001505		HIGH LIFE 6/12 BTL	ECONOMY	1	Side	3

Name: 3\_4    W:23.00 in    D:24.00 in    Avail Space: 0.42 in    Ht Space: 18.50 in

ID	UPC	Barcode	Name	Category	HFacings	Orientation	Units
1307	1820011218		BUD 18/12 CAN	PREMIUM	1	Top 90	3
1297	1820011047		BUD 12/12 CAN	PREMIUM	1	Side	4
10329	7199030017		COORS LIGHT 18/12 CAN	PREMIUM	1	Top 90	3
3198	3410001509		HIGH LIFE 12/12 BTL	ECONOMY	1	Side	4





CVS # 6053 WARM

Address: 2045 FOREST AVE | City: STATEN ISLAND | State: NY

Chain/StoreNumer: CVS - EAST 6053

Reset Name: 2019 SPRING

Planogram Name: 6053\_8ft\_OPEN\_WARM

Segment # 1 : 1\_4 DEPTH: 16 in WIDTH: 96 in DISTANCE FROM TOP OF BASE SHELF TO BOTTOM OF SHELF:6.00 in

POS #	FAC	UPC	NAME	CASES	CAPACITY	UNITS HIGH	Category
1	1	7143934450	ROLLING ROCK 12/12 CAN	1.0	2	1	ECONOMY
2	1	3410001509	HIGH LIFE 12/12 BTL	1.0	2	1	ECONOMY
3	1	3410057340	LITE 18/12 CAN	2.0	2	1	PREMIUM
4	1	7199030017	COORS LIGHT 18/12 CAN	2.0	2	1	PREMIUM
5	1	7199030069	COORS LIGHT 12/12 BTL	1.0	2	1	PREMIUM
6	1	1820000771	BUD 12/12 BTL	1.0	2	1	PREMIUM
7	1	1820000769	BUD LIGHT 12/12 BTL	1.0	2	1	PREMIUM
1	1	1820005990	MICHELOB ULTRA 12/12 BTL	1.0	2	1	ABOVE PREMIUM
2	1	8066095695	CORONA 12/12 CAN	1.0	2	1	ABOVE PREMIUM
3	1	8066095615	CORONA 12/12 BTL	1.0	2	1	ABOVE PREMIUM
4	1	8066095675	CORONA LIGHT 12/12 BTL	1.0	2	1	ABOVE PREMIUM
5	1	7289000020	HEINEKEN 12/12 CAN	1.0	2	1	ABOVE PREMIUM
6	1	7289000016	HEINEKEN 12/12 BTL	1.0	2	1	ABOVE PREMIUM
7	1	7289000159	HEINEKEN LIGHT 12/12 BTL	1.0	2	1	ABOVE PREMIUM

Segment # 1 : 1\_3 DEPTH: 16 in WIDTH: 96 in DISTANCE FROM TOP OF BASE SHELF TO BOTTOM OF SHELF:27.00 in

POS #	FAC	UPC	NAME	CASES	CAPACITY	UNITS HIGH	Category
1	1	3410057509	LITE 12/12 BTL	0.5	1	1	PREMIUM
2	1	7199000048	COORS LIGHT 12/12 CAN	2.0	4	1	PREMIUM
3	1	1820011218	BUD 18/12 CAN	2.0	2	1	PREMIUM
4	1	1820008981	BUD 8/16 CAN	1.0	3	1	PREMIUM
5	1	1820008989	BUD LIGHT 8/16 CAN	1.0	3	1	PREMIUM
6	1	1820020083	MICHELOB ULTRA PURE GOLD 12/12 BTL	0.5	1	1	ABOVE PREMIUM
1	1	8066095621	CORONA LIGHT 12/12 CAN	1.0	2	1	ABOVE PREMIUM
2	1	78615000014	STELLA ARTOIS 12/11.2 BTL	1.0	2	1	ABOVE PREMIUM
3	1	7289000011	HEINEKEN 6/12 BTL	0.8	3	1	ABOVE PREMIUM
4	1	64286090024	FOUNDERS ALL DAY SESSION IPA 15/12 CAN	1.0	2	1	ABOVE PREMIUM
5	1	75452700161	NEW BELGIUM FAT TIRE 12/12 CAN	1.0	2	1	ABOVE PREMIUM
6	1	75452700022	NEW BELGIUM FAT TIRE 6/12 BTL	0.8	3	1	ABOVE PREMIUM

Segment # 1 : 1\_2 DEPTH: 16 in WIDTH: 96 in DISTANCE FROM TOP OF BASE SHELF TO BOTTOM OF SHELF:39.00 in

POS #	FAC	UPC	NAME	CASES	CAPACITY	UNITS HIGH	Category
1	1	2210000170	PABST 12/12 CAN	1.0	2	1	ECONOMY
2	1	7199030120	COORS LIGHT 3/24 CAN	1.3	5	1	PREMIUM
3	1	1820011047	BUD 12/12 CAN	1.0	2	1	PREMIUM
4	1	8066095301	PACIFICO 6/12 BTL	0.8	3	1	ABOVE PREMIUM
5	1	7231163012	DOS EQUIS 6/12 BTL	0.8	3	1	ABOVE PREMIUM
6	1	8066095785	MODELO NEGRA 6/12 BTL	0.5	2	1	ABOVE PREMIUM
1	1	8066095765	MODELO ESPECIAL 6/12 BTL	0.5	2	1	ABOVE PREMIUM
2	1	8382056793	RED STRIPE LAGER 6/11.2 BTL	0.5	2	1	ABOVE PREMIUM
3	1	63598554890	WHITE CLAW VARIETY PACK 12/12 CAN	1.0	2	1	ABOVE PREMIUM
4	1	8769283102	TWISTED TEA ORIGINAL 6/12 BTL	0.8	3	1	ABOVE PREMIUM
5	1	3061300053	BROOKLYN SEASONAL 6/12 BTL	0.8	3	1	ABOVE PREMIUM
6	1	7199009532	BLUE MOON SEASONAL 6/12 BTL	0.8	3	1	ABOVE PREMIUM

Segment # 1 : 1\_1 DEPTH: 16 in WIDTH: 96 in DISTANCE FROM TOP OF BASE SHELF TO BOTTOM OF SHELF:50.50 in

POS #	FAC	UPC	NAME	CASES	CAPACITY	UNITS HIGH	Category
1	1	1820000833	BUD LIGHT 6/12 BTL	0.8	3	1	PREMIUM



CVS # 6053 WARM

Address: 2045 FOREST AVE | City: STATEN ISLAND | State: NY

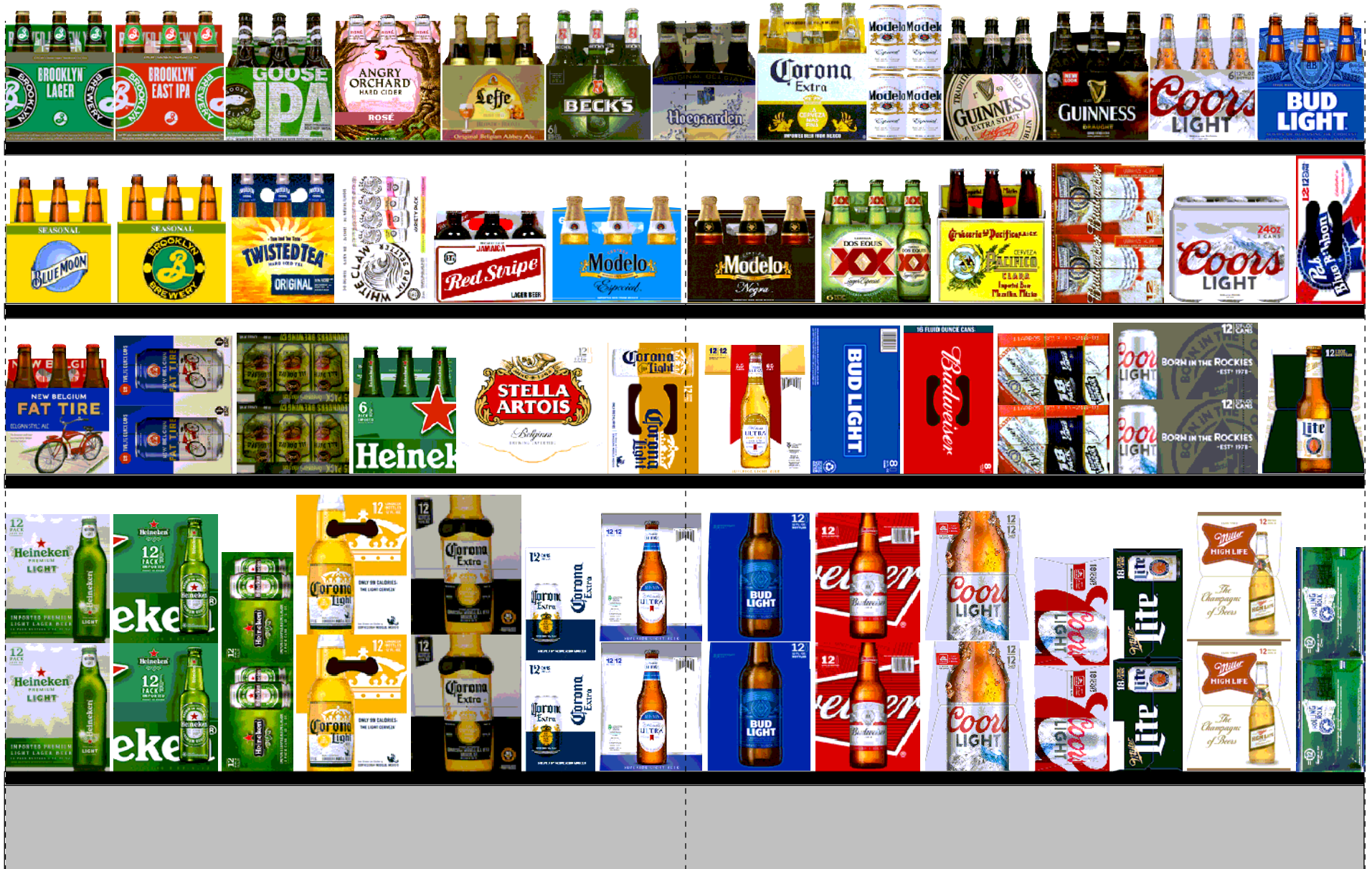
Chain/StoreNumber: CVS - EAST 6053

Reset Name: 2019 SPRING

Planogram Name: 6053\_8ft\_OPEN\_WARM

2	1	7199030005	COORS LIGHT 6/12 BTL	0.8	3	1	PREMIUM
3	1	8382010401	GUINNESS DRAUGHT STOUT 6/11.2 BTL	0.8	3	1	ABOVE PREMIUM
4	1	8382012393	GUINNESS EXTRA STOUT 6/12 BTL	0.8	3	1	ABOVE PREMIUM
5	1	8066095755	MODELO ESPECIAL 6/12 CAN	1.0	4	1	ABOVE PREMIUM
6	1	8066095605	CORONA 6/12 BTL	0.8	3	1	ABOVE PREMIUM
7	1	7861500036	HOEGAARDEN WHITE 6/11.2 BTL	0.8	3	1	ABOVE PREMIUM
1	1	8248812345	BECKS 6/12 BTL	0.8	3	1	ABOVE PREMIUM
2	1	7861500030	LEFFE BLONDE 6/11.2 BTL	0.8	3	1	ABOVE PREMIUM
3	1	8769200660	ANGRY ORCHARD ROSE 6/12 BTL	0.8	3	1	ABOVE PREMIUM
4	1	73692011132	GOOSE ISLAND IPA 6/12 BTL	0.8	3	1	ABOVE PREMIUM
5	1	3061300019	BROOKLYN EAST IPA 6/12 BTL	0.8	3	1	ABOVE PREMIUM
6	1	3061300001	BROOKLYN LAGER 6/12 BTL	0.8	3	1	ABOVE PREMIUM

# REVERSE VIEW (ONLY IF NEEDED)





CVS # 6053 WARM

Reset Timing 2019 SPRING

Address: 2045 FOREST AVE | City: STATEN ISLAND | State: NY

**REVERSE VIEW (ONLY IF NEEDED)**

Segment:  
1 of 2



**Segment # 1 : 1\_4 6.00 In**

POS	UPC	NAME
1	7143934450	ROLLING ROCK 12/ 12 CAN
2	3410001509	HIGH LIFE 12/ 12 BTL
3	3410057340	LITE 18/ 12 CAN
4	7199030017	COORS LIGHT 18/ 12 CAN
5	7199030069	COORS LIGHT 12/ 12 BTL
6	1820000771	BUD 12/ 12 BTL
7	1820000769	BUD LIGHT 12/ 12 BTL

**Segment # 1 : 1\_3 27.00 In**

POS	UPC	NAME
1	3410057509	LITE 12/ 12 BTL
2	7199000048	COORS LIGHT 12/ 12 CAN
3	1820011218	BUD 18/ 12 CAN
4	1820008981	BUD 8/ 16 CAN
5	1820008989	BUD LIGHT 8/ 16 CAN
6	1820020083	MICHELOB ULTRA PURE GOLD 12/ 12 BTL

**Segment # 1 : 1\_2 39.00 In**

POS	UPC	NAME
1	2210000170	PABST 12/ 12 CAN
2	7199030120	COORS LIGHT 3/ 24 CAN
3	1820011047	BUD 12/ 12 CAN
4	8066095301	PACIFICO 6/ 12 BTL
5	7231163012	DOS EQUIS 6/ 12 BTL
6	8066095785	MODELO NEGRA 6/ 12 BTL

**Segment # 1 : 1\_1 50.50 In**

POS	UPC	NAME
1	1820000833	BUD LIGHT 6/ 12 BTL
2	7199030005	COORS LIGHT 6/ 12 BTL
3	8382010401	GUINNESS DRAUGHT STOUT 6/ 11.2 BTL
4	8382012393	GUINNESS EXTRA STOUT 6/ 12 BTL
5	8066095755	MODELO ESPECIAL 6/ 12 CAN
6	8066095605	CORONA 6/ 12 BTL
7	7861500036	HOEGAARDEN WHITE 6/ 11.2 BTL





CVS # 6053 WARM

Reset Timing 2019 SPRING

Address: 2045 FOREST AVE | City: STATEN ISLAND | State: NY

**REVERSE VIEW (ONLY IF NEEDED)**

Segment:  
2 of 2



**Segment # 1 : 1\_4 6.00 In**

POS	UPC	NAME
1	1820005990	MICHELOB ULTRA 12/ 12 BTL
2	8066095695	CORONA 12/ 12 CAN
3	8066095615	CORONA 12/ 12 BTL
4	8066095675	CORONA LIGHT 12/ 12 BTL
5	7289000020	HEINEKEN 12/ 12 CAN
6	7289000016	HEINEKEN 12/ 12 BTL
7	7289000159	HEINEKEN LIGHT 12/ 12 BTL

**Segment # 1 : 1\_3 27.00 In**

POS	UPC	NAME
1	8066095621	CORONA LIGHT 12/ 12 CAN
2	78615000014	STELLA ARTOIS 12/ 11.2 BTL
3	7289000011	HEINEKEN 6/ 12 BTL
4	64286090024	FOUNDERS ALL DAY SESSION IPA 15/ 12 CAN
5	75452700161	NEW BELGIUM FAT TIRE 12/ 12 CAN
6	75452700022	NEW BELGIUM FAT TIRE 6/ 12 BTL

**Segment # 1 : 1\_2 39.00 In**

POS	UPC	NAME
1	8066095765	MODELO ESPECIAL 6/ 12 BTL
2	8382056793	RED STRIPE LAGER 6/ 11.2 BTL
3	63598554890	WHITE CLAW VARIETY PACK 12/ 12 CAN
4	8769283102	TWISTED TEA ORIGINAL 6/ 12 BTL
5	3061300053	BROOKLYN SEASONAL 6/ 12 BTL
6	7199009532	BLUE MOON SEASONAL 6/ 12 BTL

**Segment # 1 : 1\_1 50.50 In**

POS	UPC	NAME
1	8248812345	BECKS 6/ 12 BTL
2	78615000030	LEFFE BLONDE 6/ 11.2 BTL
3	8769200660	ANGRY ORCHARD ROSE 6/ 12 BTL
4	73692011132	GOOSE ISLAND IPA 6/ 12 BTL
5	3061300019	BROOKLYN EAST IPA 6/ 12 BTL
6	3061300001	BROOKLYN LAGER 6/ 12 BTL



CVS # 6053 WARM

Address: 2045 FOREST AVE | City: STATEN ISLAND | State: NY

Chain/StoreNumer: CVS - EAST 6053

Reset Name: 2019 SPRING

Planogram Name: 6053\_8ft\_OPEN\_WARM

CVS PHARMA... Store # 6053 H: 5 ft W: 8 ft D: 1 ft 9.00 in # of segments: 2

Name: 1\_1 W:96.00 in D:16.00 in Avail Space: 1.08 in Ht Space: 8.50 in

ID	UPC	Barcode	Name	Category	HFacings	Orientation	Units
1083	182000833		BUD LIGHT 6/12 BTL	PREMIUM	1	Front	3
10322	7199030005		COORS LIGHT 6/12 BTL	PREMIUM	1	Front	3
17284	8382010401		GUINNESS DRAUGHT STOUT ...	ABOVE PREMIUM	1	Front	3
17305	8382012393		GUINNESS EXTRA STOUT 6/12...	ABOVE PREMIUM	1	Front	3
15435	8066095755		MODELO ESPECIAL 6/12 CAN	ABOVE PREMIUM	1	Side	4
15400	8066095605		CORONA 6/12 BTL	ABOVE PREMIUM	1	Front	3
14100	78615000036		HOEGAARDEN WHITE 6/11.2 B...	ABOVE PREMIUM	1	Front	3
16693	8248812345		BECKS 6/12 BTL	ABOVE PREMIUM	1	Front	3
14098	78615000030		LEFFE BLONDE 6/11.2 BTL	ABOVE PREMIUM	1	Front	3
65019	8769200660		ANGRY ORCHARD ROSE 6/12 ...	ABOVE PREMIUM	1	Front	3
11951	73692011132		GOOSE ISLAND IPA 6/12 BTL	ABOVE PREMIUM	1	Front	3
2625	3061300019		BROOKLYN EAST IPA 6/12 BTL	ABOVE PREMIUM	1	Front	3
2616	3061300001		BROOKLYN LAGER 6/12 BTL	ABOVE PREMIUM	1	Front	3

Name: 1\_2 W:96.00 in D:16.00 in Avail Space: 4.24 in Ht Space: 10.50 in

ID	UPC	Barcode	Name	Category	HFacings	Orientation	Units
2241	221000170		PABST 12/12 CAN	ECONOMY	1	Top 90	2
10372	7199030120		COORS LIGHT 3/24 CAN	PREMIUM	1	Front	5



CVS # 6053 WARM

Address: 2045 FOREST AVE | City: STATEN ISLAND | State: NY

Chain/StoreNumer: CVS - EAST 6053

Reset Name: 2019 SPRING

Planogram Name: 6053\_8ft\_OPEN\_WARM

1297	1820011047		BUD 12/12 CAN	PREMIUM	1	Side 90	2
15383	8066095301		PACIFICO 6/12 BTL	ABOVE PREMIUM	1	Front	3
10813	7231163012		DOS EQUIS 6/12 BTL	ABOVE PREMIUM	1	Front	3
15448	8066095785		MODELO NEGRA 6/12 BTL	ABOVE PREMIUM	1	Front	2
15442	8066095765		MODELO ESPECIAL 6/12 BTL	ABOVE PREMIUM	1	Front	2
17348	8382056793		RED STRIPE LAGER 6/11.2 BTL	ABOVE PREMIUM	1	Front	2
45151	63598554890		WHITE CLAW VARIETY PACK 1...	ABOVE PREMIUM	1	Front 90	2
22092	8769283102		TWISTED TEA ORIGINAL 6/12 B...	ABOVE PREMIUM	1	Front	3
2638	3061300053		BROOKLYN SEASONAL 6/12 BTL	ABOVE PREMIUM	1	Front	3
10190	7199009532		BLUE MOON SEASONAL 6/12 B...	ABOVE PREMIUM	1	Front	3

Name: 1\_3 W:96.00 in D:16.00 in Avail Space: 3.40 in Ht Space: 11.00 in

ID	UPC	Barcode	Name	Category	HFacings	Orientation	Units
3565	3410057509		LITE 12/12 BTL	PREMIUM	1	Side	1
10164	7199000048		COORS LIGHT 12/12 CAN	PREMIUM	1	Top	4
1307	1820011218		BUD 18/12 CAN	PREMIUM	1	Side 90	2
1256	1820008981		BUD 8/16 CAN	PREMIUM	1	Top 90	3
1262	1820008989		BUD LIGHT 8/16 CAN	PREMIUM	1	Top 90	3
65828	1820020083		MICHELOB ULTRA PURE GOLD...	ABOVE PREMIUM	1	Side	1
15406	8066095621		CORONA LIGHT 12/12 CAN	ABOVE PREMIUM	1	Top 90	2



CVS # 6053 WARM

Address: 2045 FOREST AVE | City: STATEN ISLAND | State: NY

Chain/StoreNumer: CVS - EAST 6053

Reset Name: 2019 SPRING

Planogram Name: 6053\_8ft\_OPEN\_WARM

14094	78615000014		STELLA ARTOIS 12/11.2 BTL	ABOVE PREMIUM	1	Front	2
11298	7289000011		HEINEKEN 6/12 BTL	ABOVE PREMIUM	1	Front	3
7044	64286090024		FOUNDERS ALL DAY SESSION...	ABOVE PREMIUM	1	Side 90	2
13037	75452700161		NEW BELGIUM FAT TIRE 12/12 ...	ABOVE PREMIUM	1	Side 90	2
13009	75452700022		NEW BELGIUM FAT TIRE 6/12 B...	ABOVE PREMIUM	1	Front	3

Name: 1\_4      W:96.00 in      D:16.00 in      Avail Space: 4.07 in      Ht Space: 20.00 in

ID	UPC	Barcode	Name	Category	HFacings	Orientation	Units
9886	7143934450		ROLLING ROCK 12/12 CAN	ECONOMY	1	Side	2
3198	3410001509		HIGH LIFE 12/12 BTL	ECONOMY	1	Side	2
3552	3410057340		LITE 18/12 CAN	PREMIUM	1	Side	2
10329	7199030017		COORS LIGHT 18/12 CAN	PREMIUM	1	Side	2
10348	7199030069		COORS LIGHT 12/12 BTL	PREMIUM	1	Side	2
1058	1820000771		BUD 12/12 BTL	PREMIUM	1	Side	2
1056	1820000769		BUD LIGHT 12/12 BTL	PREMIUM	1	Side	2
1228	1820005990		MICHELOB ULTRA 12/12 BTL	ABOVE PREMIUM	1	Side	2
15426	8066095695		CORONA 12/12 CAN	ABOVE PREMIUM	1	Side	2
15403	8066095615		CORONA 12/12 BTL	ABOVE PREMIUM	1	Side	2
15416	8066095675		CORONA LIGHT 12/12 BTL	ABOVE PREMIUM	1	Side	2
11301	72890000020		HEINEKEN 12/12 CAN	ABOVE PREMIUM	1	Side	2



CVS # 6053 WARM

Address: 2045 FOREST AVE | City: STATEN ISLAND | State: NY

Chain/StoreNumer: CVS - EAST 6053

Reset Name: 2019 SPRING

Planogram Name: 6053\_8ft\_OPEN\_WARM

11300	7289000016		HEINEKEN 12/12 BTL	ABOVE PREMIUM	1	Side	2
11342	7289000159		HEINEKEN LIGHT 12/12 BTL	ABOVE PREMIUM	1	Side	2