





CVS # 10235 COLD

Address: 800 10TH AVE | City: NEW YORK | State: NY

Chain/StoreNumer: CVS - EAST 10235

Reset Name: 2019 SPRING

Planogram Name: 10235\_2\_DOOR\_COLD

Segment # 1 : 1\_5 DEPTH: 22 in WIDTH: 30 in DISTANCE FROM TOP OF BASE SHELF TO BOTTOM OF SHELF:0.00 in

| POS # | FAC | UPC         | NAME                              | CASES | CAPACITY | UNITS HIGH | Category      |
|-------|-----|-------------|-----------------------------------|-------|----------|------------|---------------|
| 1     | 1   | 78615000014 | STELLA ARTOIS 12/11.2 BTL         | 2.0   | 4        | 1          | ABOVE PREMIUM |
| 2     | 1   | 7289000016  | HEINEKEN 12/12 BTL                | 2.0   | 4        | 1          | ABOVE PREMIUM |
| 3     | 1   | 3354400013  | CORONA REFRESCA VARIETY 12/12 CAN | 3.0   | 6        | 1          | ABOVE PREMIUM |
| 4     | 1   | 8066095675  | CORONA LIGHT 12/12 BTL            | 2.0   | 4        | 1          | ABOVE PREMIUM |

Segment # 1 : 1\_4 DEPTH: 24 in WIDTH: 30 in DISTANCE FROM TOP OF BASE SHELF TO BOTTOM OF SHELF:20.75 in

| POS # | FAC | UPC         | NAME                     | CASES | CAPACITY | UNITS HIGH | Category      |
|-------|-----|-------------|--------------------------|-------|----------|------------|---------------|
| 1     | 1   | 78615000001 | STELLA ARTOIS 6/11.2 BTL | 0.8   | 3        | 1          | ABOVE PREMIUM |
| 2     | 1   | 7289000011  | HEINEKEN 6/12 BTL        | 0.8   | 3        | 1          | ABOVE PREMIUM |
| 3     | 1   | 7289000158  | HEINEKEN LIGHT 6/12 BTL  | 0.8   | 3        | 1          | ABOVE PREMIUM |
| 4     | 1   | 8066095605  | CORONA 6/12 BTL          | 0.8   | 3        | 1          | ABOVE PREMIUM |
| 5     | 1   | 3354495042  | CORONA PREMIER 12/12 BTL | 1.0   | 2        | 1          | ABOVE PREMIUM |

Segment # 1 : 1\_3 DEPTH: 24 in WIDTH: 30 in DISTANCE FROM TOP OF BASE SHELF TO BOTTOM OF SHELF:31.75 in

| POS # | FAC | UPC         | NAME  | CASES | CAPACITY | UNITS HIGH | Category      |
|-------|-----|-------------|---|-------|----------|------------|---------------|
| 1     | 1   | 8769282102  | ANGRY ORCHARD CRISP APPLE 6/12 BTL          | 0.8   | 3        | 1          | ABOVE PREMIUM |
| 2     | 1   | 63598506744 | MIKES HARD BLACK CHERRY LEMONADE 6/11.2 BTL | 0.8   | 3        | 1          | ABOVE PREMIUM |
| 3     | 1   | 18195400002 | PERONI 6/11.2 BTL                           | 0.8   | 3        | 1          | ABOVE PREMIUM |
| 4     | 1   | 7289000020  | HEINEKEN 12/12 CAN                          | 1.0   | 2        | 1          | ABOVE PREMIUM |
| 5     | 1   | 8066095695  | CORONA 12/12 CAN                            | 1.0   | 2        | 1          | ABOVE PREMIUM |
| 6     | 1   | 8066095625  | CORONA LIGHT 6/12 BTL                       | 0.8   | 3        | 1          | ABOVE PREMIUM |

Segment # 1 : 1\_2 DEPTH: 24 in WIDTH: 30 in DISTANCE FROM TOP OF BASE SHELF TO BOTTOM OF SHELF:42.75 in

| POS # | FAC | UPC        | NAME                               | CASES | CAPACITY | UNITS HIGH | Category      |
|-------|-----|------------|------------------------------------|-------|----------|------------|---------------|
| 1     | 1   | 7199009511 | BLUE MOON BELGIAN WHITE 6/12 BTL   | 0.8   | 3        | 1          | ABOVE PREMIUM |
| 2     | 1   | 7199009532 | BLUE MOON SEASONAL 6/12 BTL        | 0.8   | 3        | 1          | ABOVE PREMIUM |
| 3     | 1   | 8769210012 | SAMUEL ADAMS BOSTON LAGER 6/12 BTL | 0.8   | 3        | 1          | ABOVE PREMIUM |
| 4     | 1   | 8769230050 | SAMUEL ADAMS SEASONAL 6/12 BTL (A) | 0.8   | 3        | 1          | ABOVE PREMIUM |
| 5     | 1   | 8769200127 | SAMUEL ADAMS REBEL IPA 6/12 BTL    | 0.8   | 3        | 1          | ABOVE PREMIUM |
| 6     | 1   | 8248812345 | BECKS 6/12 BTL                     | 0.8   | 3        | 1          | ABOVE PREMIUM |

Segment # 1 : 1\_1 DEPTH: 24 in WIDTH: 30 in DISTANCE FROM TOP OF BASE SHELF TO BOTTOM OF SHELF:53.25 in

| POS # | FAC | UPC         | NAME                                   | CASES | CAPACITY | UNITS HIGH | Category      |
|-------|-----|-------------|--|-------|----------|------------|---------------|
| 1     | 1   | 3061300001  | BROOKLYN LAGER 6/12 BTL                | 0.8   | 3        | 1          | ABOVE PREMIUM |
| 2     | 1   | 3061300053  | BROOKLYN SEASONAL 6/12 BTL             | 0.8   | 3        | 1          | ABOVE PREMIUM |
| 3     | 1   | 75452700022 | NEW BELGIUM FAT TIRE 6/12 BTL          | 0.8   | 3        | 1          | ABOVE PREMIUM |
| 4     | 1   | 81760601000 | CAPTAIN LAWRENCE FRESHCHESTER 6/12 BTL | 0.8   | 3        | 1          | ABOVE PREMIUM |
| 5     | 1   | 73692011132 | GOOSE ISLAND IPA 6/12 BTL              | 0.8   | 3        | 1          | ABOVE PREMIUM |
| 6     | 1   | 8382012393  | GUINNESS EXTRA STOUT 6/12 BTL          | 0.8   | 3        | 1          | ABOVE PREMIUM |

Segment # 2 : 2\_5 DEPTH: 22 in WIDTH: 30 in DISTANCE FROM TOP OF BASE SHELF TO BOTTOM OF SHELF:0.00 in

| POS # | FAC | UPC        | NAME                | CASES | CAPACITY | UNITS HIGH | Category      |
|-------|-----|------------|---------------------|-------|----------|------------|---------------|
| 1     | 1   | 8066095615 | CORONA 12/12 BTL    | 2.0   | 4        | 1          | ABOVE PREMIUM |
| 2     | 1   | 1820053218 | BUD LIGHT 18/12 CAN | 2.0   | 2        | 1          | PREMIUM       |



CVS # 10235 COLD

Address: 800 10TH AVE | City: NEW YORK | State: NY

Chain/StoreNumer: CVS - EAST 10235

Reset Name: 2019 SPRING

Planogram Name: 10235\_2\_DOOR\_COLD

|   |   |            |                       |     |   |   |         |
|---|---|------------|-----------------------|-----|---|---|---------|
| 3 | 1 | 1820011218 | BUD 18/12 CAN         | 2.0 | 2 | 1 | PREMIUM |
| 4 | 1 | 7199030017 | COORS LIGHT 18/12 CAN | 3.0 | 3 | 1 | PREMIUM |
| 5 | 1 | 3410057340 | LITE 18/12 CAN        | 2.0 | 2 | 1 | PREMIUM |

**Segment # 2 : 2\_4 DEPTH: 24 in WIDTH: 30 in DISTANCE FROM TOP OF BASE SHELF TO BOTTOM OF SHELF:20.75 in**

| POS # | FAC | UPC        | NAME                      | CASES | CAPACITY | UNITS HIGH | Category      |
|-------|-----|------------|---------------------------|-------|----------|------------|---------------|
| 1     | 1   | 8066095715 | MODELO ESPECIAL 12/12 CAN | 1.0   | 2        | 1          | ABOVE PREMIUM |
| 2     | 1   | 1820053047 | BUD LIGHT 12/12 CAN       | 1.5   | 3        | 1          | PREMIUM       |
| 3     | 1   | 1820011047 | BUD 12/12 CAN             | 1.5   | 3        | 1          | PREMIUM       |
| 4     | 1   | 7199000048 | COORS LIGHT 12/12 CAN     | 2.0   | 4        | 1          | PREMIUM       |
| 5     | 1   | 3410057636 | LITE 12/12 CAN            | 1.5   | 3        | 1          | PREMIUM       |

**Segment # 2 : 2\_3 DEPTH: 24 in WIDTH: 30 in DISTANCE FROM TOP OF BASE SHELF TO BOTTOM OF SHELF:32.25 in**

| POS # | FAC | UPC        | NAME                     | CASES | CAPACITY | UNITS HIGH | Category      |
|-------|-----|------------|--------------------------|-------|----------|------------|---------------|
| 1     | 1   | 8066095765 | MODELO ESPECIAL 6/12 BTL | 0.5   | 2        | 1          | ABOVE PREMIUM |
| 2     | 1   | 1820000833 | BUD LIGHT 6/12 BTL       | 0.8   | 3        | 1          | PREMIUM       |
| 3     | 1   | 1820000834 | BUD 6/12 BTL             | 0.8   | 3        | 1          | PREMIUM       |
| 4     | 1   | 7199030005 | COORS LIGHT 6/12 BTL     | 0.8   | 3        | 1          | PREMIUM       |
| 5     | 1   | 3410057505 | LITE 6/12 BTL            | 0.8   | 3        | 1          | PREMIUM       |

**Segment # 2 : 2\_2 DEPTH: 24 in WIDTH: 30 in DISTANCE FROM TOP OF BASE SHELF TO BOTTOM OF SHELF:42.75 in**

| POS # | FAC | UPC         | NAME                             | CASES | CAPACITY | UNITS HIGH | Category      |
|-------|-----|-------------|----------------------------------|-------|----------|------------|---------------|
| 1     | 1   | 3410051681  | CAPE LINE VARIETY PACK 12/12 CAN | 1.0   | 2        | 1          | ABOVE PREMIUM |
| 2     | 1   | 72383000009 | LAGUNITAS IPA 6/12 BTL           | 0.8   | 3        | 1          | ABOVE PREMIUM |
| 3     | 1   | 8066095301  | PACIFICO 6/12 BTL                | 0.8   | 3        | 1          | ABOVE PREMIUM |
| 4     | 1   | 7199030069  | COORS LIGHT 12/12 BTL            | 1.0   | 2        | 1          | PREMIUM       |
| 5     | 1   | 2210000170  | PABST 12/12 CAN                  | 1.5   | 3        | 1          | ECONOMY       |

**Segment # 2 : 2\_1 DEPTH: 24 in WIDTH: 30 in DISTANCE FROM TOP OF BASE SHELF TO BOTTOM OF SHELF:54.25 in**

| POS # | FAC | UPC        | NAME                     | CASES | CAPACITY | UNITS HIGH | Category      |
|-------|-----|------------|--------------------------|-------|----------|------------|---------------|
| 1     | 1   | 7089701331 | FOSTERS 1/25.4 CAN       | 0.6   | 7        | 1          | ABOVE PREMIUM |
| 2     | 1   | 8066095643 | CORONA 1/24 CAN          | 0.7   | 8        | 1          | ABOVE PREMIUM |
| 3     | 1   | 8066095721 | MODELO ESPECIAL 1/24 CAN | 0.7   | 8        | 1          | ABOVE PREMIUM |
| 4     | 1   | 7289000119 | HEINEKEN 1/24 CAN        | 0.7   | 8        | 1          | ABOVE PREMIUM |
| 5     | 1   | 1820025001 | BUD LIGHT 1/25 CAN       | 0.5   | 8        | 1          | PREMIUM       |
| 6     | 1   | 1820025000 | BUD 1/25 CAN             | 0.5   | 8        | 1          | PREMIUM       |
| 7     | 1   | 7199030065 | COORS LIGHT 1/24 CAN     | 0.7   | 8        | 1          | PREMIUM       |
| 8     | 1   | 7199010071 | COORS BANQUET 1/24 CAN   | 0.7   | 8        | 1          | PREMIUM       |
| 9     | 1   | 3410000355 | LITE 1/24 CAN            | 0.7   | 8        | 1          | PREMIUM       |

# REVERSE VIEW (ONLY IF NEEDED)





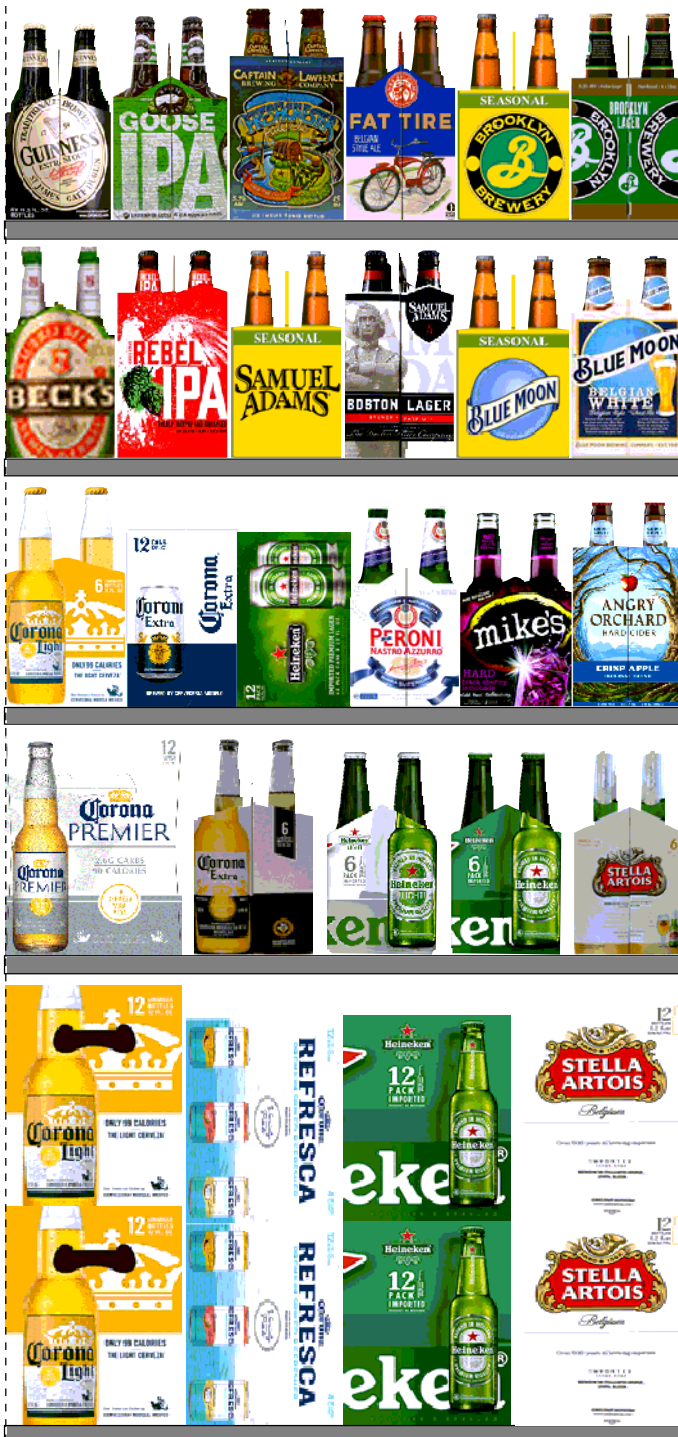
CVS # 10235 COLD

Reset Timing 2019 SPRING

Address: 800 10TH AVE | City: NEW YORK | State: NY

**REVERSE VIEW (ONLY IF NEEDED)**

Segment:  
1 of 2



**Segment # 1 : 1\_5 0.00 In**

**POS UPC NAME**

- 1 7861500014 STELLA ARTOIS 12/ 11.2 BTL
- 2 7289000016 HEINEKEN 12/ 12 BTL
- 3 3354400013 CORONA REFRESCA VARIETY 12/ 12 CAN
- 4 8066095675 CORONA LIGHT 12/ 12 BTL

**Segment # 1 : 1\_4 20.75 In**

**POS UPC NAME**

- 1 7861500001 STELLA ARTOIS 6/ 11.2 BTL
- 2 7289000011 HEINEKEN 6/ 12 BTL
- 3 7289000158 HEINEKEN LIGHT 6/ 12 BTL
- 4 8066095605 CORONA 6/ 12 BTL
- 5 3354495042 CORONA PREMIER 12/ 12 BTL

**Segment # 1 : 1\_3 31.75 In**

**POS UPC NAME**

- 1 8769282102 ANGRY ORCHARD CRISP APPLE 6/ 12 BTL
- 2 63598506744 MIKES HARD BLACK CHERRY LEMONADE 6/ 11.2 BTL
- 3 18195400002 PERONI 6/ 11.2 BTL
- 4 7289000020 HEINEKEN 12/ 12 CAN
- 5 8066095695 CORONA 12/ 12 CAN
- 6 8066095625 CORONA LIGHT 6/ 12 BTL

**Segment # 1 : 1\_2 42.75 In**

**POS UPC NAME**

- 1 7199009511 BLUE MOON BELGIAN WHITE 6/ 12 BTL
- 2 7199009532 BLUE MOON SEASONAL 6/ 12 BTL
- 3 8769210012 SAMUEL ADAMS BOSTON LAGER 6/ 12 BTL
- 4 8769230050 SAMUEL ADAMS SEASONAL 6/ 12 BTL (A)
- 5 8769200127 SAMUEL ADAMS REBEL IPA 6/ 12 BTL
- 6 8248812345 BECKS 6/ 12 BTL

**Segment # 1 : 1\_1 53.25 In**

**POS UPC NAME**

- 1 3061300001 BROOKLYN LAGER 6/ 12 BTL
- 2 3061300053 BROOKLYN SEASONAL 6/ 12 BTL
- 3 75452700022 NEW BELGIUM FAT TIRE 6/ 12 BTL
- 4 81760601000 CAPTAIN LAWRENCE FRESHCHESTER 6/ 12 BTL
- 5 73692011132 GOOSE ISLAND IPA 6/ 12 BTL
- 6 8382012393 GUINNESS EXTRA STOUT 6/ 12 BTL



CVS # 10235 COLD

Reset Timing 2019 SPRING

Address: 800 10TH AVE | City: NEW YORK | State: NY

**REVERSE VIEW (ONLY IF NEEDED)**

Segment:  
2 of 2



**Segment # 2 : 2\_5 0.00 In**

| POS | UPC        | NAME                   |
|-----|------------|------------------------|
| 1   | 8066095615 | CORONA 12/ 12 BTL      |
| 2   | 1820053218 | BUD LIGHT 18/ 12 CAN   |
| 3   | 1820011218 | BUD 18/ 12 CAN         |
| 4   | 7199030017 | COORS LIGHT 18/ 12 CAN |
| 5   | 3410057340 | LITE 18/ 12 CAN        |

**Segment # 2 : 2\_4 20.75 In**

| POS | UPC        | NAME                       |
|-----|------------|----------------------------|
| 1   | 8066095715 | MODELO ESPECIAL 12/ 12 CAN |
| 2   | 1820053047 | BUD LIGHT 12/ 12 CAN       |
| 3   | 1820011047 | BUD 12/ 12 CAN             |
| 4   | 7199000048 | COORS LIGHT 12/ 12 CAN     |
| 5   | 3410057636 | LITE 12/ 12 CAN            |

**Segment # 2 : 2\_3 32.25 In**

| POS | UPC        | NAME                      |
|-----|------------|---------------------------|
| 1   | 8066095765 | MODELO ESPECIAL 6/ 12 BTL |
| 2   | 1820000833 | BUD LIGHT 6/ 12 BTL       |
| 3   | 1820000834 | BUD 6/ 12 BTL             |
| 4   | 7199030005 | COORS LIGHT 6/ 12 BTL     |
| 5   | 3410057505 | LITE 6/ 12 BTL            |

**Segment # 2 : 2\_2 42.75 In**

| POS | UPC         | NAME                              |
|-----|-------------|-----------------------------------|
| 1   | 3410051681  | CAPE LINE VARIETY PACK 12/ 12 CAN |
| 2   | 72383000009 | LAGUNITAS IPA 6/ 12 BTL           |
| 3   | 8066095301  | PACIFICO 6/ 12 BTL                |
| 4   | 7199030069  | COORS LIGHT 12/ 12 BTL            |
| 5   | 2210000170  | PABST 12/ 12 CAN                  |

**Segment # 2 : 2\_1 54.25 In**

| POS | UPC        | NAME                      |
|-----|------------|---------------------------|
| 1   | 7089701331 | FOSTERS 1/ 25.4 CAN       |
| 2   | 8066095643 | CORONA 1/ 24 CAN          |
| 3   | 8066095721 | MODELO ESPECIAL 1/ 24 CAN |
| 4   | 7289000119 | HEINEKEN 1/ 24 CAN        |
| 5   | 1820025001 | BUD LIGHT 1/ 25 CAN       |
| 6   | 1820025000 | BUD 1/ 25 CAN             |
| 7   | 7199030065 | COORS LIGHT 1/ 24 CAN     |
| 8   | 7199010071 | COORS BANQUET 1/ 24 CAN   |
| 9   | 3410000355 | LITE 1/ 24 CAN            |



CVS # 10235 COLD

Address: 800 10TH AVE | City: NEW YORK | State: NY

Chain/StoreNumer: CVS - EAST 10235

Reset Name: 2019 SPRING

Planogram Name: 10235\_2\_DOOR\_COLD

CVS PHARMA... Store # 10235 H: 5 ft 4.00 in W: 5 ft D: 2 ft # of segments: 2

Name: 1\_1 W:30.00 in D:24.00 in Avail Space: 0.15 in Ht Space: 10.00 in

| ID    | UPC         | Barcode        | Name                           | Category      | HFacings | Orientation | Units |
|-------|-------------|----------------|--------------------------------|---------------|----------|-------------|-------|
| 2616  | 3061300001  | 30613 00001 2  | BROOKLYN LAGER 6/12 BTL        | ABOVE PREMIUM | 1        | Side        | 3     |
| 2638  | 3061300053  | 30613 00053 1  | BROOKLYN SEASONAL 6/12 BTL     | ABOVE PREMIUM | 1        | Side        | 3     |
| 13009 | 75452700022 | 754527 00022 6 | NEW BELGIUM FAT TIRE 6/12 B... | ABOVE PREMIUM | 1        | Side        | 3     |
| 15955 | 81760601000 | 817606 01000 1 | CAPTAIN LAWRENCE FRESHC...     | ABOVE PREMIUM | 1        | Side        | 3     |
| 11951 | 73692011132 | 736920 11132 7 | GOOSE ISLAND IPA 6/12 BTL      | ABOVE PREMIUM | 1        | Side        | 3     |
| 17305 | 8382012393  | 83820 12393 7  | GUINNESS EXTRA STOUT 6/12...   | ABOVE PREMIUM | 1        | Side        | 3     |

Name: 1\_2 W:30.00 in D:24.00 in Avail Space: 0.31 in Ht Space: 9.75 in

| ID    | UPC        | Barcode       | Name                         | Category      | HFacings | Orientation | Units |
|-------|------------|---------------|------------------------------|---------------|----------|-------------|-------|
| 10180 | 7199009511 | 71990 09511 6 | BLUE MOON BELGIAN WHITE 6... | ABOVE PREMIUM | 1        | Side        | 3     |
| 10190 | 7199009532 | 71990 09532 1 | BLUE MOON SEASONAL 6/12 B... | ABOVE PREMIUM | 1        | Side        | 3     |
| 21956 | 8769210012 | 87692 10012 6 | SAMUEL ADAMS BOSTON LAG...   | ABOVE PREMIUM | 1        | Side        | 3     |
| 21995 | 8769230050 | 87692 30050 2 | SAMUEL ADAMS SEASONAL 6/...  | ABOVE PREMIUM | 1        | Side        | 3     |
| 21860 | 8769200127 | 87692 00127 0 | SAMUEL ADAMS REBEL IPA 6/... | ABOVE PREMIUM | 1        | Side        | 3     |
| 16693 | 8248812345 | 82488 12345 7 | BECKS 6/12 BTL               | ABOVE PREMIUM | 1        | Side        | 3     |

Name: 1\_3 W:30.00 in D:24.00 in Avail Space: 0.06 in Ht Space: 10.25 in

| ID    | UPC         | Barcode        | Name                         | Category      | HFacings | Orientation | Units |
|-------|-------------|----------------|------------------------------|---------------|----------|-------------|-------|
| 22090 | 8769282102  | 87692 82102 1  | ANGRY ORCHARD CRISP APP...   | ABOVE PREMIUM | 1        | Side        | 3     |
| 6402  | 63598506744 | 635985 06744 3 | MIKES HARD BLACK CHERRY L... | ABOVE PREMIUM | 1        | Side        | 3     |



CVS # 10235 COLD

Address: 800 10TH AVE | City: NEW YORK | State: NY

Chain/StoreNumer: CVS - EAST 10235

Reset Name: 2019 SPRING

Planogram Name: 10235\_2\_DOOR\_COLD

|       |             |   |  |   |                       |               |   |      |   |
|-------|-------------|---|--|---|-----------------------|---------------|---|------|---|
| 568   | 18195400002 | 1 |  | 2 | PERONI 6/11.2 BTL     | ABOVE PREMIUM | 1 | Side | 3 |
| 11301 | 7289000020  | 0 |  | 0 | HEINEKEN 12/12 CAN    | ABOVE PREMIUM | 1 | Side | 2 |
| 15426 | 8066095695  | 0 |  | 4 | CORONA 12/12 CAN      | ABOVE PREMIUM | 1 | Side | 2 |
| 15408 | 8066095625  | 0 |  | 1 | CORONA LIGHT 6/12 BTL | ABOVE PREMIUM | 1 | Side | 3 |

Name: 1\_4 W:30.00 in D:24.00 in Avail Space: 2.25 in Ht Space: 10.25 in

| ID    | UPC         | Barcode | Name | Category | HFacings                 | Orientation   | Units |      |   |
|-------|-------------|---------|------|----------|--------------------------|---------------|-------|------|---|
| 14089 | 78615000001 | 7       |      | 4        | STELLA ARTOIS 6/11.2 BTL | ABOVE PREMIUM | 1     | Side | 3 |
| 11298 | 7289000011  | 0       |      | 8        | HEINEKEN 6/12 BTL        | ABOVE PREMIUM | 1     | Side | 3 |
| 11341 | 7289000158  | 0       |      | 0        | HEINEKEN LIGHT 6/12 BTL  | ABOVE PREMIUM | 1     | Side | 3 |
| 15400 | 8066095605  | 0       |      | 3        | CORONA 6/12 BTL          | ABOVE PREMIUM | 1     | Side | 3 |
| 44952 | 3354495042  | 0       |      | 5        | CORONA PREMIER 12/12 BTL | ABOVE PREMIUM | 1     | Side | 2 |

Name: 1\_5 W:30.00 in D:22.00 in Avail Space: 0.68 in Ht Space: 20.00 in

| ID    | UPC         | Barcode | Name | Category | HFacings                   | Orientation   | Units |        |   |
|-------|-------------|---------|------|----------|----------------------------|---------------|-------|--------|---|
| 14094 | 78615000014 | 7       |      | 4        | STELLA ARTOIS 12/11.2 BTL  | ABOVE PREMIUM | 1     | Side   | 4 |
| 11300 | 7289000016  | 0       |      | 3        | HEINEKEN 12/12 BTL         | ABOVE PREMIUM | 1     | Side   | 4 |
| 86777 | 3354400013  | 0       |      | 7        | CORONA REFRESCA VARIETY... | ABOVE PREMIUM | 1     | Top 90 | 6 |
| 15416 | 8066095675  | 0       |      | 6        | CORONA LIGHT 12/12 BTL     | ABOVE PREMIUM | 1     | Side   | 4 |

Name: 2\_1 W:30.00 in D:24.00 in Avail Space: 3.67 in Ht Space: 9.00 in

| ID    | UPC        | Barcode | Name | Category | HFacings           | Orientation   | Units |       |   |
|-------|------------|---------|------|----------|--------------------|---------------|-------|-------|---|
| 9452  | 7089701331 | 0       |      | 5        | FOSTERS 1/25.4 CAN | ABOVE PREMIUM | 1     | Front | 7 |
| 15415 | 8066095643 | 0       |      | 5        | CORONA 1/24 CAN    | ABOVE PREMIUM | 1     | Front | 8 |





CVS # 10235 COLD

Address: 800 10TH AVE | City: NEW YORK | State: NY

Chain/StoreNumer: CVS - EAST 10235

Reset Name: 2019 SPRING

Planogram Name: 10235\_2\_DOOR\_COLD

|       |            |  |                          |               |   |       |   |
|-------|------------|--|--------------------------|---------------|---|-------|---|
| 15431 | 8066095721 |  | MODELO ESPECIAL 1/24 CAN | ABOVE PREMIUM | 1 | Front | 8 |
| 11327 | 7289000119 |  | HEINEKEN 1/24 CAN        | ABOVE PREMIUM | 1 | Front | 8 |
| 1521  | 1820025001 |  | BUD LIGHT 1/25 CAN       | PREMIUM       | 1 | Front | 8 |
| 1520  | 1820025000 |  | BUD 1/25 CAN             | PREMIUM       | 1 | Front | 8 |
| 10346 | 7199030065 |  | COORS LIGHT 1/24 CAN     | PREMIUM       | 1 | Front | 8 |
| 10243 | 7199010071 |  | COORS BANQUET 1/24 CAN   | PREMIUM       | 1 | Front | 8 |
| 2968  | 3410000355 |  | LITE 1/24 CAN            | PREMIUM       | 1 | Front | 8 |

Name: 2\_2 W:30.00 in D:24.00 in Avail Space: 1.05 in Ht Space: 10.75 in

| ID    | UPC         | Barcode | Name                           | Category      | HFacings | Orientation | Units |
|-------|-------------|---------|--------------------------------|---------------|----------|-------------|-------|
| 86788 | 3410051681  |         | CAPE LINE VARIETY PACK 12/1... | ABOVE PREMIUM | 1        | Side 90     | 2     |
| 10845 | 72383000009 |         | LAGUNITAS IPA 6/12 BTL         | ABOVE PREMIUM | 1        | Side        | 3     |
| 15383 | 8066095301  |         | PACIFICO 6/12 BTL              | ABOVE PREMIUM | 1        | Side        | 3     |
| 10348 | 7199030069  |         | COORS LIGHT 12/12 BTL          | PREMIUM       | 1        | Side        | 2     |
| 2241  | 2210000170  |         | PABST 12/12 CAN                | ECONOMY       | 1        | Top 90      | 3     |

Name: 2\_3 W:30.00 in D:24.00 in Avail Space: 3.96 in Ht Space: 9.75 in

| ID    | UPC        | Barcode | Name                     | Category      | HFacings | Orientation | Units |
|-------|------------|---------|--------------------------|---------------|----------|-------------|-------|
| 15442 | 8066095765 |         | MODELO ESPECIAL 6/12 BTL | ABOVE PREMIUM | 1        | Side        | 2     |
| 1083  | 1820000833 |         | BUD LIGHT 6/12 BTL       | PREMIUM       | 1        | Side        | 3     |
| 1084  | 1820000834 |         | BUD 6/12 BTL             | PREMIUM       | 1        | Side        | 3     |
| 10322 | 7199030005 |         | COORS LIGHT 6/12 BTL     | PREMIUM       | 1        | Side        | 3     |



CVS # 10235 COLD

Address: 800 10TH AVE | City: NEW YORK | State: NY

Chain/StoreNumer: CVS - EAST 10235

Reset Name: 2019 SPRING

Planogram Name: 10235\_2\_DOOR\_COLD

|      |            |  |               |         |   |      |   |
|------|------------|--|---------------|---------|---|------|---|
| 3564 | 3410057505 |  | LITE 6/12 BTL | PREMIUM | 1 | Side | 3 |
|------|------------|--|---------------|---------|---|------|---|

Name: 2\_4 W:30.00 in D:24.00 in Avail Space: 2.78 in Ht Space: 10.75 in

| ID    | UPC        | Barcode | Name                      | Category      | HFacings | Orientation | Units |
|-------|------------|---------|---------------------------|---------------|----------|-------------|-------|
| 15429 | 8066095715 |         | MODELO ESPECIAL 12/12 CAN | ABOVE PREMIUM | 1        | Top 90      | 2     |
| 1659  | 1820053047 |         | BUD LIGHT 12/12 CAN       | PREMIUM       | 1        | Top 90      | 3     |
| 1297  | 1820011047 |         | BUD 12/12 CAN             | PREMIUM       | 1        | Top 90      | 3     |
| 10164 | 7199000048 |         | COORS LIGHT 12/12 CAN     | PREMIUM       | 1        | Side 90     | 4     |
| 3579  | 3410057636 |         | LITE 12/12 CAN            | PREMIUM       | 1        | Top 90      | 3     |

Name: 2\_5 W:30.00 in D:22.00 in Avail Space: 2.16 in Ht Space: 20.00 in

| ID    | UPC        | Barcode | Name                  | Category      | HFacings | Orientation | Units |
|-------|------------|---------|-----------------------|---------------|----------|-------------|-------|
| 15403 | 8066095615 |         | CORONA 12/12 BTL      | ABOVE PREMIUM | 1        | Side        | 4     |
| 1667  | 1820053218 |         | BUD LIGHT 18/12 CAN   | PREMIUM       | 1        | Top 90      | 2     |
| 1307  | 1820011218 |         | BUD 18/12 CAN         | PREMIUM       | 1        | Top 90      | 2     |
| 10329 | 7199030017 |         | COORS LIGHT 18/12 CAN | PREMIUM       | 1        | Top 90      | 3     |
| 3552  | 3410057340 |         | LITE 18/12 CAN        | PREMIUM       | 1        | Top 90      | 2     |