





CVS # 2558 COLD

Address: 360 6TH AVE | City: NEW YORK | State: NY

Chain/StoreNumer: CVS - EAST 2558

Reset Name: 2019 SPRING

Planogram Name: 2558_4_DOOR_COLD

Segment # 1 : 1_5 DEPTH: 21 in WIDTH: 31 in DISTANCE FROM TOP OF BASE SHELF TO BOTTOM OF SHELF:0.00 in

POS #	FAC	UPC	NAME	CASES	CAPACITY	UNITS HIGH	Category
1	1	1820020077	NATURAL LIGHT 15/12 CAN	1.0	2	1	ECONOMY
2	1	3410057636	LITE 12/12 CAN	2.0	4	1	PREMIUM
3	1	3410057340	LITE 18/12 CAN	2.0	2	1	PREMIUM
4	2	7199030017	COORS LIGHT 18/12 CAN	4.0	4	2	PREMIUM
5	1	7199000048	COORS LIGHT 12/12 CAN	2.0	4	1	PREMIUM

Segment # 1 : 1_4 DEPTH: 22 in WIDTH: 31 in DISTANCE FROM TOP OF BASE SHELF TO BOTTOM OF SHELF:19.00 in

POS #	FAC	UPC	NAME	CASES	CAPACITY	UNITS HIGH	Category
1	1	2210000170	PABST 12/12 CAN	1.0	2	1	ECONOMY
2	1	3410001505	HIGH LIFE 6/12 BTL	0.5	2	1	ECONOMY
3	1	3410001509	HIGH LIFE 12/12 BTL	1.0	2	1	ECONOMY
4	1	3410057509	LITE 12/12 BTL	1.0	2	1	PREMIUM
5	1	3410057505	LITE 6/12 BTL	0.5	2	1	PREMIUM

Segment # 1 : 1_3 DEPTH: 22 in WIDTH: 31 in DISTANCE FROM TOP OF BASE SHELF TO BOTTOM OF SHELF:31.00 in

POS #	FAC	UPC	NAME	CASES	CAPACITY	UNITS HIGH	Category
1	1	8066095641	CORONA 1/24 BTL	0.6	7	1	ABOVE PREMIUM
2	1	8248800006	BECKS 1/24 BTL	0.4	6	1	ABOVE PREMIUM
3	1	7289000478	HEINEKEN 1/22 BTL	0.5	7	1	ABOVE PREMIUM
4	1	78615000057	STELLA ARTOIS 1/22 BTL	0.6	7	1	ABOVE PREMIUM
5	1	75452700703	NEW BELGIUM DAYBLAZER 1/24 CAN	0.6	7	1	ABOVE PREMIUM
6	1	2210000004	PABST 1/24 CAN	0.6	7	1	ECONOMY
7	1	3410000005	HIGH LIFE 1/24 CAN	0.6	7	1	ECONOMY
8	1	7199047712	KEYSTONE ICE 1/24 CAN	0.6	7	1	ECONOMY
9	1	7199048024	KEYSTONE LIGHT 1/24 CAN	0.6	7	1	ECONOMY
10	1	1820025002	NATURAL LIGHT 1/25 CAN	0.5	7	1	ECONOMY

Segment # 1 : 1_2 DEPTH: 22 in WIDTH: 31 in DISTANCE FROM TOP OF BASE SHELF TO BOTTOM OF SHELF:44.00 in

POS #	FAC	UPC	NAME	CASES	CAPACITY	UNITS HIGH	Category
1	1	3410000555	MGD 1/24 CAN	0.6	7	1	PREMIUM
2	1	3410000355	LITE 1/24 CAN	0.6	7	1	PREMIUM
3	1	7199030065	COORS LIGHT 1/24 CAN	0.6	7	1	PREMIUM
4	3	7199010071	COORS BANQUET 1/24 CAN	1.8	21	3	PREMIUM
5	1	1820025000	BUD 1/25 CAN	0.5	7	1	PREMIUM
6	1	1820025001	BUD LIGHT 1/25 CAN	0.5	7	1	PREMIUM
7	1	1820025010	MICHELOB ULTRA 1/25 CAN	0.5	7	1	ABOVE PREMIUM
8	1	8066095643	CORONA 1/24 CAN	0.6	7	1	ABOVE PREMIUM

Segment # 1 : 1_1 DEPTH: 22 in WIDTH: 31 in DISTANCE FROM TOP OF BASE SHELF TO BOTTOM OF SHELF:54.00 in

POS #	FAC	UPC	NAME	CASES	CAPACITY	UNITS HIGH	Category
1	1	7089701331	FOSTERS 1/25.4 CAN	0.5	6	1	ABOVE PREMIUM
2	1	7231132124	DOS EQUIS 1/24 CAN	0.6	7	1	ABOVE PREMIUM
3	1	7289000119	HEINEKEN 1/24 CAN	0.6	7	1	ABOVE PREMIUM
4	1	8066095796	MODELO CHELADA 1/24 CAN	0.6	7	1	ABOVE PREMIUM
5	1	8066095721	MODELO ESPECIAL 1/24 CAN	0.6	7	1	ABOVE PREMIUM
6	1	1820025014	BUD LIGHT LIME LIME-A-RITA 1/25 CAN	0.5	7	1	ABOVE PREMIUM



CVS # 2558 COLD

Address: 360 6TH AVE | City: NEW YORK | State: NY

Chain/StoreNumer: CVS - EAST 2558

Reset Name: 2019 SPRING

Planogram Name: 2558_4_DOOR_COLD

7	1	1820025505	BUD LIGHT LIME STRAW-BER-RITA 1/25 CAN	0.5	7	1	ABOVE PREMIUM
8	1	1820025533	BUD LIGHT LIME MANG-O-RITA 1/25 CAN	0.5	7	1	ABOVE PREMIUM
9	1	3410000323	REDD'S WICKED 1/24 CAN	0.6	7	1	ABOVE PREMIUM
10	1	61300874829	ARNOLD PALMER SPIKED HALF AND HALF 1/24 CAN	0.6	7	1	ABOVE PREMIUM

Segment # 2 : 2_5 - 1 DEPTH: 21 in WIDTH: 31 in DISTANCE FROM TOP OF BASE SHELF TO BOTTOM OF SHELF:0.00 in

POS # FAC	UPC	NAME	CASES	CAPACITY	UNITS HIGH	Category	
1	1	1820011218	BUD 18/12 CAN	2.0	2	1	PREMIUM
2	1	1820011047	BUD 12/12 CAN	2.0	4	1	PREMIUM
3	1	1820053047	BUD LIGHT 12/12 CAN	2.0	4	1	PREMIUM
4	3	1820053218	BUD LIGHT 18/12 CAN	6.0	6	3	PREMIUM

Segment # 2 : 2_4 - 1 DEPTH: 22 in WIDTH: 31 in DISTANCE FROM TOP OF BASE SHELF TO BOTTOM OF SHELF:19.00 in

POS # FAC	UPC	NAME	CASES	CAPACITY	UNITS HIGH	Category	
1	1	7199030078	COORS LIGHT 18/12 BTL	1.0	1	1	PREMIUM
2	1	1820000771	BUD 12/12 BTL	1.0	2	1	PREMIUM
3	1	1820000769	BUD LIGHT 12/12 BTL	1.0	2	1	PREMIUM
4	1	1820005990	MICHELOB ULTRA 12/12 BTL	1.0	2	1	ABOVE PREMIUM

Segment # 2 : 2_3 - 1 DEPTH: 22 in WIDTH: 31 in DISTANCE FROM TOP OF BASE SHELF TO BOTTOM OF SHELF:31.00 in

POS # FAC	UPC	NAME	CASES	CAPACITY	UNITS HIGH	Category	
1	1	7199030069	COORS LIGHT 12/12 BTL	1.0	2	1	PREMIUM
2	1	1820000834	BUD 6/12 BTL	0.5	2	1	PREMIUM
3	1	1820000833	BUD LIGHT 6/12 BTL	0.5	2	1	PREMIUM
4	1	1820018993	BUD LIGHT PLATINUM 6/12 BTL	0.5	2	1	ABOVE PREMIUM
5	1	1820020083	MICHELOB ULTRA PURE GOLD 12/12 BTL	1.0	2	1	ABOVE PREMIUM

Segment # 2 : 2_2 - 1 DEPTH: 22 in WIDTH: 31 in DISTANCE FROM TOP OF BASE SHELF TO BOTTOM OF SHELF:42.00 in

POS # FAC	UPC	NAME	CASES	CAPACITY	UNITS HIGH	Category	
1	1	7199000008	COORS LIGHT 6/12 CAN	0.5	2	1	PREMIUM
2	1	7199030005	COORS LIGHT 6/12 BTL	0.5	2	1	PREMIUM
3	1	7199030104	COORS LIGHT 9/16 BTL (AL)	1.0	2	1	PREMIUM
4	1	1820014991	BUD LIGHT LIME 6/12 BTL	0.5	2	1	ABOVE PREMIUM
5	1	1820005989	MICHELOB ULTRA 6/12 BTL	0.5	2	1	ABOVE PREMIUM

Segment # 2 : 2_1 - 1 DEPTH: 22 in WIDTH: 31 in DISTANCE FROM TOP OF BASE SHELF TO BOTTOM OF SHELF:53.00 in

POS # FAC	UPC	NAME	CASES	CAPACITY	UNITS HIGH	Category	
1	2	7199030120	COORS LIGHT 3/24 CAN	1.0	4	2	PREMIUM
2	1	8769200149	ANGRY ORCHARD GREEN APPLE 6/12 BTL	0.5	2	1	ABOVE PREMIUM
3	1	8769282102	ANGRY ORCHARD CRISP APPLE 6/12 BTL	0.8	3	1	ABOVE PREMIUM
4	1	3410008716	REDD'S 6/12 BTL	0.5	2	1	ABOVE PREMIUM
5	1	85961200103	21ST AMENDMENT BREW FREE OR DIE 6/12 CAN	1.0	4	1	ABOVE PREMIUM
6	1	1820013986	SHOCK TOP BELGIAN WHITE 6/12 BTL	0.5	2	1	ABOVE PREMIUM

Segment # 3 : 2_5 - 2 DEPTH: 21 in WIDTH: 31 in DISTANCE FROM TOP OF BASE SHELF TO BOTTOM OF SHELF:0.00 in

POS # FAC	UPC	NAME	CASES	CAPACITY	UNITS HIGH	Category	
1	1	8066095715	MODELO ESPECIAL 12/12 CAN	3.0	6	1	ABOVE PREMIUM



CVS # 2558 COLD

Address: 360 6TH AVE | City: NEW YORK | State: NY

Chain/StoreNumer: CVS - EAST 2558

Reset Name: 2019 SPRING

Planogram Name: 2558_4_DOOR_COLD

2	1	8066095715	MODELO ESPECIAL 12/12 CAN	1.5	3	1	ABOVE PREMIUM
3	1	8066095615	CORONA 12/12 BTL	2.0	4	1	ABOVE PREMIUM

Segment # 3 : 2_4 - 2 DEPTH: 22 in WIDTH: 31 in DISTANCE FROM TOP OF BASE SHELF TO BOTTOM OF SHELF:19.00 in

POS	# FAC	UPC	NAME	CASES	CAPACITY	UNITS HIGH	Category
1	1	8066095765	MODELO ESPECIAL 6/12 BTL	0.5	2	1	ABOVE PREMIUM
2	1	8066095785	MODELO NEGRA 6/12 BTL	0.5	2	1	ABOVE PREMIUM
3	1	8066095675	CORONA LIGHT 12/12 BTL	1.0	2	1	ABOVE PREMIUM
4	1	3354495042	CORONA PREMIER 12/12 BTL	1.0	2	1	ABOVE PREMIUM

Segment # 3 : 2_3 - 2 DEPTH: 22 in WIDTH: 31 in DISTANCE FROM TOP OF BASE SHELF TO BOTTOM OF SHELF:31.00 in

POS	# FAC	UPC	NAME	CASES	CAPACITY	UNITS HIGH	Category
1	1	8066095755	MODELO ESPECIAL 6/12 CAN	2.0	8	1	ABOVE PREMIUM
2	1	8066095881	VICTORIA 6/12 BTL	0.5	2	1	ABOVE PREMIUM
3	1	8066095625	CORONA LIGHT 6/12 BTL	0.5	2	1	ABOVE PREMIUM
4	1	8066095605	CORONA 6/12 BTL	0.5	2	1	ABOVE PREMIUM
5	1	3354400013	CORONA REFRESCA VARIETY 12/12 CAN	1.0	2	1	ABOVE PREMIUM

Segment # 3 : 2_2 - 2 DEPTH: 22 in WIDTH: 31 in DISTANCE FROM TOP OF BASE SHELF TO BOTTOM OF SHELF:42.00 in

POS	# FAC	UPC	NAME	CASES	CAPACITY	UNITS HIGH	Category
1	1	8992427891	YUENGLING LAGER 6/12 BTL	0.5	2	1	PREMIUM
2	1	8982600009	TECATE 6/12 CAN	1.0	4	1	ABOVE PREMIUM
3	1	8066095301	PACIFICO 6/12 BTL	1.0	4	1	ABOVE PREMIUM
4	1	7231123021	SOL 12/12 BTL	1.0	2	1	ABOVE PREMIUM
5	1	7231163012	DOS EQUIS 6/12 BTL	0.5	2	1	ABOVE PREMIUM

Segment # 3 : 2_1 - 2 DEPTH: 22 in WIDTH: 31 in DISTANCE FROM TOP OF BASE SHELF TO BOTTOM OF SHELF:53.00 in

POS	# FAC	UPC	NAME	CASES	CAPACITY	UNITS HIGH	Category
1	1	73692011132	GOOSE ISLAND IPA 6/12 BTL	0.5	2	1	ABOVE PREMIUM
2	1	8857333101	SHINER BOCK 6/12 BTL	0.5	2	1	ABOVE PREMIUM
3	1	3061300053	BROOKLYN SEASONAL 6/12 BTL	0.5	2	1	ABOVE PREMIUM
4	1	3061300001	BROOKLYN LAGER 6/12 BTL	0.5	2	1	ABOVE PREMIUM
5	1	75452700022	NEW BELGIUM FAT TIRE 6/12 BTL	0.5	2	1	ABOVE PREMIUM
6	1	8378337521	SIERRA NEVADA PALE ALE 6/12 BTL	0.5	2	1	ABOVE PREMIUM

Segment # 4 : 2_5 DEPTH: 21 in WIDTH: 31 in DISTANCE FROM TOP OF BASE SHELF TO BOTTOM OF SHELF:0.00 in

POS	# FAC	UPC	NAME	CASES	CAPACITY	UNITS HIGH	Category
1	1	8066095695	CORONA 12/12 CAN	1.0	2	1	ABOVE PREMIUM
2	1	7289000016	HEINEKEN 12/12 BTL	3.0	6	1	ABOVE PREMIUM
3	1	7289000020	HEINEKEN 12/12 CAN	2.0	4	1	ABOVE PREMIUM
4	1	78615000014	STELLA ARTOIS 12/11.2 BTL	2.0	4	1	ABOVE PREMIUM
5	1	63598554890	WHITE CLAW VARIETY PACK 12/12 CAN	3.0	6	1	ABOVE PREMIUM

Segment # 4 : 2_4 DEPTH: 22 in WIDTH: 31 in DISTANCE FROM TOP OF BASE SHELF TO BOTTOM OF SHELF:21.00 in

POS	# FAC	UPC	NAME	CASES	CAPACITY	UNITS HIGH	Category
1	1	78615000036	HOEGAARDEN WHITE 6/11.2 BTL	0.8	3	1	ABOVE PREMIUM
2	1	7289000158	HEINEKEN LIGHT 6/12 BTL	0.8	3	1	ABOVE PREMIUM



CVS # 2558 COLD

Address: 360 6TH AVE | City: NEW YORK | State: NY

Chain/StoreNumer: CVS - EAST 2558

Reset Name: 2019 SPRING

Planogram Name: 2558_4_DOOR_COLD

3	1	7289000011	HEINEKEN 6/12 BTL	0.8	3	1	ABOVE PREMIUM
4	1	7861500001	STELLA ARTOIS 6/11.2 BTL	0.8	3	1	ABOVE PREMIUM
5	1	18195400002	PERONI 6/11.2 BTL	0.8	3	1	ABOVE PREMIUM
6	1	3410051681	CAPE LINE VARIETY PACK 12/12 CAN	1.0	2	1	ABOVE PREMIUM

Segment # 4 : 2_3 DEPTH: 22 In WIDTH: 31 In DISTANCE FROM TOP OF BASE SHELF TO BOTTOM OF SHELF:32.00 In

POS	# FAC	UPC	NAME	CASES	CAPACITY	UNITS HIGH	Category
1	1	7231163001	PILSNER URQUELL 6/11.2 BTL	0.8	3	1	ABOVE PREMIUM
2	1	78615000030	LEFFE BLONDE 6/11.2 BTL	0.8	3	1	ABOVE PREMIUM
3	1	72383000020	LAGUNITAS LITTLE SUMPIN 6/12 BTL	0.5	2	1	ABOVE PREMIUM
4	1	72383000009	LAGUNITAS IPA 6/12 BTL	0.5	2	1	ABOVE PREMIUM
5	1	63598525875	MIKES HARDER LEMONADE 4/16 CAN	0.7	4	1	ABOVE PREMIUM
6	1	63598501012	MIKES HARDER BLACK CHERRY LEMONADE 4/16 CAN	0.7	4	1	ABOVE PREMIUM

Segment # 4 : 2_2 DEPTH: 22 In WIDTH: 31 In DISTANCE FROM TOP OF BASE SHELF TO BOTTOM OF SHELF:43.00 In

POS	# FAC	UPC	NAME	CASES	CAPACITY	UNITS HIGH	Category
1	1	85909300242	SIXPOINT SWEET ACTION 6/12 CAN	0.5	2	1	ABOVE PREMIUM
2	1	85909300243	SIXPOINT BENGALI IPA 6/12 CAN	0.5	2	1	ABOVE PREMIUM
3	1	78036950906	PEAK ORGANIC SEASONAL 6/12 CAN	0.5	2	1	ABOVE PREMIUM
4	1	78036960806	PEAK ORGANIC IPA 6/12 CAN	0.5	2	1	ABOVE PREMIUM
5	1	81760601020	CAPTAIN LAWRENCE IPA 6/12 BTL	0.5	2	1	ABOVE PREMIUM
6	1	79837312602	MAGIC HAT 9 NOT QUITE PALE ALE 6/12 BTL	0.5	2	1	ABOVE PREMIUM

Segment # 4 : 2_1 DEPTH: 22 In WIDTH: 31 In DISTANCE FROM TOP OF BASE SHELF TO BOTTOM OF SHELF:53.00 In

POS	# FAC	UPC	NAME	CASES	CAPACITY	UNITS HIGH	Category
1	1	8769230050	SAMUEL ADAMS SEASONAL 6/12 BTL (A)	0.8	3	1	ABOVE PREMIUM
2	1	3061300019	BROOKLYN EAST IPA 6/12 BTL	0.5	2	1	ABOVE PREMIUM
3	1	8769210012	SAMUEL ADAMS BOSTON LAGER 6/12 BTL	0.8	3	1	ABOVE PREMIUM
4	1	7199009561	BLUE MOON MANGO WHEAT 6/12 BTL	0.5	2	1	ABOVE PREMIUM
5	1	7199009532	BLUE MOON SEASONAL 6/12 BTL	0.5	2	1	ABOVE PREMIUM
6	1	7199009511	BLUE MOON BELGIAN WHITE 6/12 BTL	0.5	2	1	ABOVE PREMIUM

REVERSE VIEW (ONLY IF NEEDED)





CVS # 2558 COLD

Reset Timing 2019 SPRING

Address: 360 6TH AVE | City: NEW YORK | State: NY

REVERSE VIEW (ONLY IF NEEDED)

Segment:
1 of 4



Segment # 1 : 1_5 0.00 In

POS	UPC	NAME
1	182002077	NATURAL LIGHT 15/ 12 CAN
2	3410057636	LITE 12/ 12 CAN
3	3410057340	LITE 18/ 12 CAN
4	7199030017	COORS LIGHT 18/ 12 CAN
5	7199000048	COORS LIGHT 12/ 12 CAN

Segment # 1 : 1_4 19.00 In

POS	UPC	NAME
1	2210000170	PABST 12/ 12 CAN
2	3410001505	HIGH LIFE 6/ 12 BTL
3	3410001509	HIGH LIFE 12/ 12 BTL
4	3410057509	LITE 12/ 12 BTL
5	3410057505	LITE 6/ 12 BTL

Segment # 1 : 1_3 31.00 In

POS	UPC	NAME
1	8066095641	CORONA 1/24 BTL
2	8248800006	BECKS 1/ 24 BTL
3	7289000478	HEINEKEN 1/22 BTL
4	78615000057	STELLA ARTOIS 1/22 BTL
5	75452700703	NEW BELGIUM DAYBLAZER 1/24 CAN
6	2210000004	PABST 1/ 24 CAN
7	3410000005	HIGH LIFE 1/ 24 CAN
8	7199047712	KEYSTONE ICE 1/24 CAN
9	7199048024	KEYSTONE LIGHT 1/24 CAN
10	1820025002	NATURAL LIGHT 1/25 CAN

Segment # 1 : 1_2 44.00 In

POS	UPC	NAME
1	3410000555	MGD 1/24 CAN
2	3410000355	LITE 1/ 24 CAN
3	7199030065	COORS LIGHT 1/ 24 CAN
4	7199010071	COORS BANQUET 1/24 CAN
5	1820025000	BUD 1/ 25 CAN
6	1820025001	BUD LIGHT 1/ 25 CAN
7	1820025010	MICHELOB ULTRA 1/25 CAN
8	8066095643	CORONA 1/ 24 CAN

Segment # 1 : 1_1 54.00 In

POS	UPC	NAME
1	7089701331	FOSTERS 1/25.4 CAN
2	7231132124	DOS EQUIS 1/24 CAN
3	7289000119	HEINEKEN 1/24 CAN
4	8066095796	MODELO CHELADA 1/ 24 CAN
5	8066095721	MODELO ESPECIAL 1/24 CAN
6	1820025014	BUD LIGHT LIME LIME-A-RITA 1/25 CAN
7	1820025505	BUD LIGHT LIME STRAW-BER-RITA 1/25 CAN
8	1820025533	BUD LIGHT LIME MANG-O-RITA 1/25 CAN
9	3410000323	REDD'S WICKED 1/ 24 CAN
10	61300874829	ARNOLD PALMER SPIKED HALF AND HALF 1/24 CAN



CVS # 2558 COLD

Reset Timing 2019 SPRING

Address: 360 6TH AVE | City: NEW YORK | State: NY

REVERSE VIEW (ONLY IF NEEDED)

Segment:
2 of 4



Segment # 2 : 2_5 - 1 0.00 In

POS	UPC	NAME
1	1820011218	BUD 18/ 12 CAN
2	1820011047	BUD 12/ 12 CAN
3	1820053047	BUD LIGHT 12/ 12 CAN
4	1820053218	BUD LIGHT 18/ 12 CAN

Segment # 2 : 2_4 - 1 19.00 In

POS	UPC	NAME
1	7199030078	COORS LIGHT 18/ 12 BTL
2	1820000771	BUD 12/ 12 BTL
3	1820000769	BUD LIGHT 12/ 12 BTL
4	1820005990	MICHELOB ULTRA 12/ 12 BTL

Segment # 2 : 2_3 - 1 31.00 In

POS	UPC	NAME
1	7199030069	COORS LIGHT 12/ 12 BTL
2	1820000834	BUD 6/ 12 BTL
3	1820000833	BUD LIGHT 6/ 12 BTL
4	1820018993	BUD LIGHT PLATINUM 6/ 12 BTL
5	1820020083	MICHELOB ULTRA PURE GOLD 12/ 12 BTL

Segment # 2 : 2_2 - 1 42.00 In

POS	UPC	NAME
1	7199000008	COORS LIGHT 6/ 12 CAN
2	7199030005	COORS LIGHT 6/ 12 BTL
3	7199030104	COORS LIGHT 9/ 16 BTL (AL)
4	1820014991	BUD LIGHT LIME 6/ 12 BTL
5	1820005989	MICHELOB ULTRA 6/ 12 BTL

Segment # 2 : 2_1 - 1 53.00 In

POS	UPC	NAME
1	7199030120	COORS LIGHT 3/ 24 CAN
2	8769200149	ANGRY ORCHARD GREEN APPLE 6/ 12 BTL
3	8769282102	ANGRY ORCHARD CRISP APPLE 6/ 12 BTL
4	3410008716	REDD'S 6/ 12 BTL
5	85961200103	21ST AMENDMENT BREW FREE OR DIE 6/ 12 CAN
6	1820013986	SHOCK TOP BELGIAN WHITE 6/ 12 BTL



CVS # 2558 COLD

Reset Timing 2019 SPRING

Address: 360 6TH AVE | City: NEW YORK | State: NY

REVERSE VIEW (ONLY IF NEEDED)

Segment:
3 of 4



Segment # 3 : 2_5 - 2 0.00 In

POS	UPC	NAME
1	8066095715	MODELO ESPECIAL 12/ 12 CAN
2	8066095715	MODELO ESPECIAL 12/ 12 CAN
3	8066095615	CORONA 12/ 12 BTL

Segment # 3 : 2_4 - 2 19.00 In

POS	UPC	NAME
1	8066095765	MODELO ESPECIAL 6/ 12 BTL
2	8066095785	MODELO NEGRA 6/ 12 BTL
3	8066095675	CORONA LIGHT 12/ 12 BTL
4	3354495042	CORONA PREMIER 12/ 12 BTL

Segment # 3 : 2_3 - 2 31.00 In

POS	UPC	NAME
1	8066095755	MODELO ESPECIAL 6/ 12 CAN
2	8066095881	VICTORIA 6/ 12 BTL
3	8066095625	CORONA LIGHT 6/ 12 BTL
4	8066095605	CORONA 6/ 12 BTL
5	3354400013	CORONA REFRESCA VARIETY 12/ 12 CAN

Segment # 3 : 2_2 - 2 42.00 In

POS	UPC	NAME
1	8992427891	YUENGLING LAGER 6/ 12 BTL
2	8982600009	TECATE 6/ 12 CAN
3	8066095301	PACIFICO 6/ 12 BTL
4	7231123021	SOL 12/ 12 BTL
5	7231163012	DOS EQUIS 6/ 12 BTL

Segment # 3 : 2_1 - 2 53.00 In

POS	UPC	NAME
1	73692011132	GOOSE ISLAND IPA 6/ 12 BTL
2	8857333101	SHINER BOCK 6/ 12 BTL
3	3061300053	BROOKLYN SEASONAL 6/ 12 BTL
4	3061300001	BROOKLYN LAGER 6/ 12 BTL
5	75452700022	NEW BELGIUM FAT TIRE 6/ 12 BTL
6	8378337521	SIERRA NEVADA PALE ALE 6/ 12 BTL



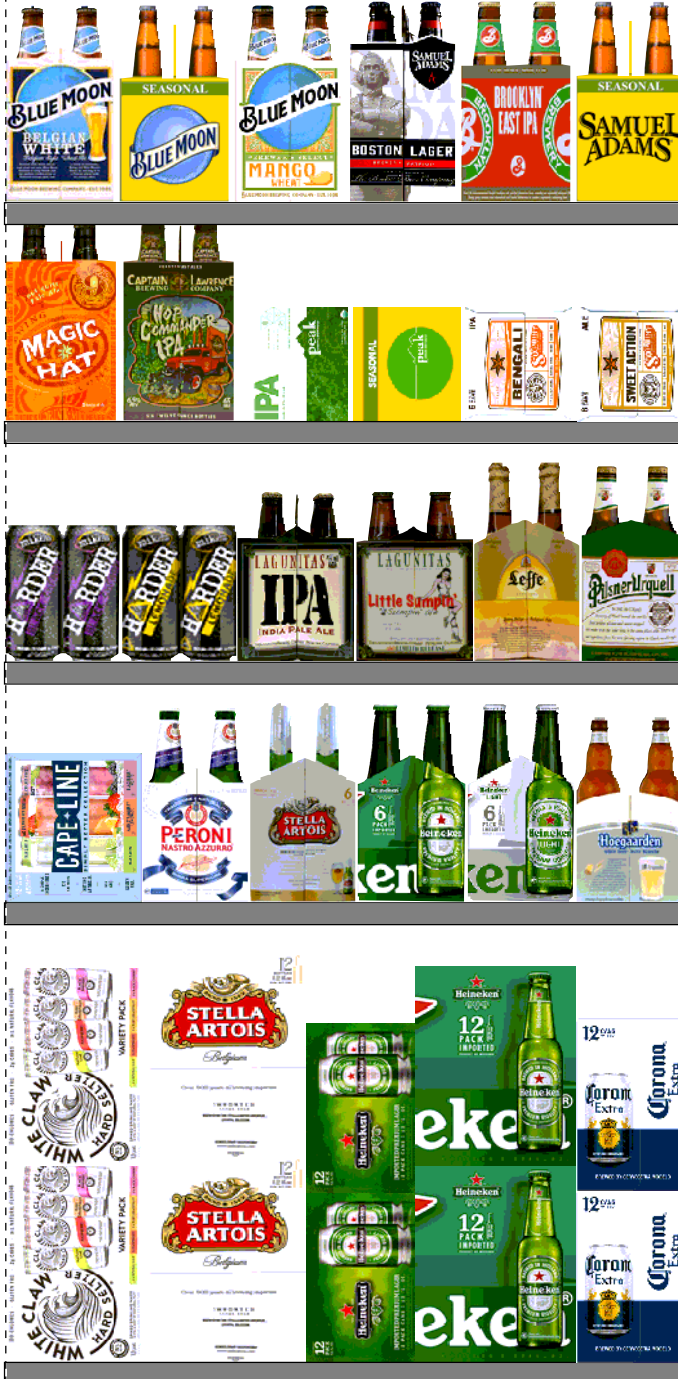
CVS # 2558 COLD

Reset Timing 2019 SPRING

Address: 360 6TH AVE | City: NEW YORK | State: NY

REVERSE VIEW (ONLY IF NEEDED)

Segment:
4 of 4



Segment # 4 : 2_5 0.00 In

POS	UPC	NAME
1	8066095695	CORONA 12/ 12 CAN
2	7289000016	HEINEKEN 12/ 12 BTL
3	7289000020	HEINEKEN 12/ 12 CAN
4	78615000014	STELLA ARTOIS 12/ 11.2 BTL
5	63598554890	WHITE CLAW VARIETY PACK 12/ 12 CAN

Segment # 4 : 2_4 21.00 In

POS	UPC	NAME
1	78615000036	HOEGAARDEN WHITE 6/ 11.2 BTL
2	72890000158	HEINEKEN LIGHT 6/ 12 BTL
3	72890000111	HEINEKEN 6/ 12 BTL
4	786150000001	STELLA ARTOIS 6/ 11.2 BTL
5	18195400002	PERONI 6/ 11.2 BTL
6	3410051681	CAPE LINE VARIETY PACK 12/ 12 CAN

Segment # 4 : 2_3 32.00 In

POS	UPC	NAME
1	7231163001	PILSNER URQUELL 6/ 11.2 BTL
2	78615000030	LEFFE BLONDE 6/ 11.2 BTL
3	72383000020	LAGUNITAS LITTLE SUMPIN 6/ 12 BTL
4	72383000009	LAGUNITAS IPA 6/ 12 BTL
5	63598525875	MIKES HARDER LEMONADE 4/ 16 CAN
6	63598501012	MIKES HARDER BLACK CHERRY LEMONADE 4/ 16 CAN

Segment # 4 : 2_2 43.00 In

POS	UPC	NAME
1	85909300242	SIXPOINT SWEET ACTION 6/ 12 CAN
2	85909300243	SIXPOINT BENGALI IPA 6/ 12 CAN
3	78036950906	PEAK ORGANIC SEASONAL 6/ 12 CAN
4	78036960806	PEAK ORGANIC IPA 6/ 12 CAN
5	81760601020	CAPTAIN LAWRENCE IPA 6/ 12 BTL
6	79837312602	MAGIC HAT 9 NOT QUITE PALE ALE 6/ 12 BTL

Segment # 4 : 2_1 53.00 In

POS	UPC	NAME
1	87692300050	SAMUEL ADAMS SEASONAL 6/ 12 BTL (A)
2	3061300019	BROOKLYN EAST IPA 6/ 12 BTL
3	8769210012	SAMUEL ADAMS BOSTON LAGER 6/ 12 BTL
4	7199009561	BLUE MOON MANGO WHEAT 6/ 12 BTL
5	7199009532	BLUE MOON SEASONAL 6/ 12 BTL
6	7199009511	BLUE MOON BELGIAN WHITE 6/ 12 BTL



CVS # 2558 COLD

Address: 360 6TH AVE | City: NEW YORK | State: NY

Chain/StoreNumer: CVS - EAST 2558

Reset Name: 2019 SPRING

Planogram Name: 2558_4_DOOR_COLD

CVS PHARMA... Store # 2558 H: 5 ft 4.00 in W: 10 ft 4.00 in D: 2 ft # of segments: 4

Name: 1_1 W:31.00 in D:22.00 in Avail Space: 1.83 in Ht Space: 9.00 in

ID	UPC	Barcode	Name	Category	HFacings	Orientation	Units
9452	7089701331	0 70897 01331 5	FOSTERS 1/25.4 CAN	ABOVE PREMIUM	1	Front	6
10795	7231132124	0 72311 32124 2	DOS EQUIS 1/24 CAN	ABOVE PREMIUM	1	Front	7
11327	7289000119	0 72890 00119 1	HEINEKEN 1/24 CAN	ABOVE PREMIUM	1	Front	7
15453	8066095796	0 80660 95796 8	MODELO CHELADA 1/24 CAN	ABOVE PREMIUM	1	Front	7
15431	8066095721	0 80660 95721 0	MODELO ESPECIAL 1/24 CAN	ABOVE PREMIUM	1	Front	7
1534	1820025014	0 18200 25014 9	BUD LIGHT LIME LIME-A-RITA 1...	ABOVE PREMIUM	1	Front	7
1546	1820025505	0 18200 25505 2	BUD LIGHT LIME STRAW-BER...	ABOVE PREMIUM	1	Front	7
1561	1820025533	0 18200 25533 5	BUD LIGHT LIME MANG-O-RITA...	ABOVE PREMIUM	1	Front	7
2935	3410000323	0 34100 00323 4	REDD'S WICKED 1/24 CAN	ABOVE PREMIUM	1	Front	7
66064	61300874829	6 13008 74829 6	ARNOLD PALMER SPIKED HAL...	ABOVE PREMIUM	1	Side	7

Name: 1_2 W:31.00 in D:22.00 in Avail Space: 2.32 in Ht Space: 9.00 in

ID	UPC	Barcode	Name	Category	HFacings	Orientation	Units
3014	3410000555	0 34100 00555 9	MGD 1/24 CAN	PREMIUM	1	Front	7
2968	3410000355	0 34100 00355 5	LITE 1/24 CAN	PREMIUM	1	Front	7
10346	7199030065	0 71990 30065 4	COORS LIGHT 1/24 CAN	PREMIUM	1	Front	7
10243	7199010071	0 71990 10071 1	COORS BANQUET 1/24 CAN	PREMIUM	3	Front	21
1520	1820025000	0 18200 25000 2	BUD 1/25 CAN	PREMIUM	1	Front	7



CVS # 2558 COLD

Address: 360 6TH AVE | City: NEW YORK | State: NY

Chain/StoreNumer: CVS - EAST 2558

Reset Name: 2019 SPRING

Planogram Name: 2558_4_DOOR_COLD

1521	1820025001		BUD LIGHT 1/25 CAN	PREMIUM	1	Front	7
1530	1820025010		MICHELOB ULTRA 1/25 CAN	ABOVE PREMIUM	1	Front	7
15415	8066095643		CORONA 1/24 CAN	ABOVE PREMIUM	1	Front	7

Name: 1_3 W:31.00 in D:22.00 in Avail Space: 1.80 in Ht Space: 12.00 in

ID	UPC	Barcode	Name	Category	HFacings	Orientation	Units
15413	8066095641		CORONA 1/24 BTL	ABOVE PREMIUM	1	Front	7
16687	8248800006		BECKS 1/24 BTL	ABOVE PREMIUM	1	Front	6
11367	7289000478		HEINEKEN 1/22 BTL	ABOVE PREMIUM	1	Front	7
14104	78615000057		STELLA ARTOIS 1/22 BTL	ABOVE PREMIUM	1	Front	7
46230	75452700703		NEW BELGIUM DAYBLAZER 1/...	ABOVE PREMIUM	1	Front	7
2191	2210000004		PABST 1/24 CAN	ECONOMY	1	Front	7
2761	3410000005		HIGH LIFE 1/24 CAN	ECONOMY	1	Front	7
10412	7199047712		KEYSTONE ICE 1/24 CAN	ECONOMY	1	Front	7
10436	7199048024		KEYSTONE LIGHT 1/24 CAN	ECONOMY	1	Side	7
1522	1820025002		NATURAL LIGHT 1/25 CAN	ECONOMY	1	Side	7

Name: 1_4 W:31.00 in D:22.00 in Avail Space: 1.56 in Ht Space: 11.00 in

ID	UPC	Barcode	Name	Category	HFacings	Orientation	Units
2241	2210000170		PABST 12/12 CAN	ECONOMY	1	Top 90	2
3197	3410001505		HIGH LIFE 6/12 BTL	ECONOMY	1	Side	2
3198	3410001509		HIGH LIFE 12/12 BTL	ECONOMY	1	Side	2



CVS # 2558 COLD

Address: 360 6TH AVE | City: NEW YORK | State: NY

Chain/StoreNumer: CVS - EAST 2558

Reset Name: 2019 SPRING

Planogram Name: 2558_4_DOOR_COLD

3565	3410057509		LITE 12/12 BTL	PREMIUM	1	Side	2
3564	3410057505		LITE 6/12 BTL	PREMIUM	1	Side	2

Name: 1_5 W:31.00 in D:21.00 in Avail Space: 0.46 in Ht Space: 18.00 in

ID	UPC	Barcode	Name	Category	HFacings	Orientation	Units
61975	1820020077		NATURAL LIGHT 15/12 CAN	ECONOMY	1	Side	2
3579	3410057636		LITE 12/12 CAN	PREMIUM	1	Side	4
3552	3410057340		LITE 18/12 CAN	PREMIUM	1	Top 90	2
10329	7199030017		COORS LIGHT 18/12 CAN	PREMIUM	2	Top 90	4
10164	7199000048		COORS LIGHT 12/12 CAN	PREMIUM	1	Side	4

Name: 2_1 - 1 W:31.00 in D:22.00 in Avail Space: 0.01 in Ht Space: 10.00 in

ID	UPC	Barcode	Name	Category	HFacings	Orientation	Units
10372	7199030120		COORS LIGHT 3/24 CAN	PREMIUM	2	Side	4
21866	8769200149		ANGRY ORCHARD GREEN AP...	ABOVE PREMIUM	1	Side	2
22090	8769282102		ANGRY ORCHARD CRISP APP...	ABOVE PREMIUM	1	Side	3
3255	3410008716		REDDS 6/12 BTL	ABOVE PREMIUM	1	Side	2
21241	85961200103		21ST AMENDMENT BREW FRE...	ABOVE PREMIUM	1	Side	4
1345	1820013986		SHOCK TOP BELGIAN WHITE 6...	ABOVE PREMIUM	1	Side	2

Name: 2_2 - 1 W:31.00 in D:22.00 in Avail Space: 3.00 in Ht Space: 10.00 in

ID	UPC	Barcode	Name	Category	HFacings	Orientation	Units
10155	7199000008		COORS LIGHT 6/12 CAN	PREMIUM	1	Side	2
10322	7199030005		COORS LIGHT 6/12 BTL	PREMIUM	1	Side	2



CVS # 2558 COLD

Address: 360 6TH AVE | City: NEW YORK | State: NY

Chain/StoreNumer: CVS - EAST 2558

Reset Name: 2019 SPRING

Planogram Name: 2558_4_DOOR_COLD

10367	7199030104		COORS LIGHT 9/16 BTL (AL)	PREMIUM	1	Front	2
1357	1820014991		BUD LIGHT LIME 6/12 BTL	ABOVE PREMIUM	1	Side	2
1227	1820005989		MICHELOB ULTRA 6/12 BTL	ABOVE PREMIUM	1	Side	2

Name: 2_3 - 1 W:31.00 in D:22.00 in Avail Space: 1.15 in Ht Space: 10.00 in

ID	UPC	Barcode	Name	Category	HFacings	Orientation	Units
10348	7199030069		COORS LIGHT 12/12 BTL	PREMIUM	1	Side	2
1084	1820000834		BUD 6/12 BTL	PREMIUM	1	Side	2
1083	1820000833		BUD LIGHT 6/12 BTL	PREMIUM	1	Side	2
1429	1820018993		BUD LIGHT PLATINUM 6/12 BTL	ABOVE PREMIUM	1	Side	2
65828	1820020083		MICHELOB ULTRA PURE GOLD...	ABOVE PREMIUM	1	Side	2

Name: 2_4 - 1 W:31.00 in D:22.00 in Avail Space: 1.33 in Ht Space: 11.00 in

ID	UPC	Barcode	Name	Category	HFacings	Orientation	Units
10352	7199030078		COORS LIGHT 18/12 BTL	PREMIUM	1	Side	1
1058	1820000771		BUD 12/12 BTL	PREMIUM	1	Side	2
1056	1820000769		BUD LIGHT 12/12 BTL	PREMIUM	1	Side	2
1228	1820005990		MICHELOB ULTRA 12/12 BTL	ABOVE PREMIUM	1	Side	2

Name: 2_5 - 1 W:31.00 in D:21.00 in Avail Space: 1.30 in Ht Space: 18.00 in

ID	UPC	Barcode	Name	Category	HFacings	Orientation	Units
1307	1820011218		BUD 18/12 CAN	PREMIUM	1	Top 90	2
1297	1820011047		BUD 12/12 CAN	PREMIUM	1	Side	4
1659	1820053047		BUD LIGHT 12/12 CAN	PREMIUM	1	Side	4



CVS # 2558 COLD

Address: 360 6TH AVE | City: NEW YORK | State: NY

Chain/StoreNumer: CVS - EAST 2558

Reset Name: 2019 SPRING

Planogram Name: 2558_4_DOOR_COLD

1667	1820053218		18200 53218	4	BUD LIGHT 18/12 CAN	PREMIUM	3	Top 90	6
------	------------	--	-------------	---	---------------------	---------	---	--------	---

Name: 2_1 - 2 W:31.00 in D:22.00 in Avail Space: 0.41 in Ht Space: 10.00 in

ID	UPC	Barcode	Name	Category	HFacings	Orientation	Units	
11951	73692011132		7 36920 11132 7	GOOSE ISLAND IPA 6/12 BTL	ABOVE PREMIUM	1	Side	2
22534	8857333101		0 88573 33101 1	SHINER BOCK 6/12 BTL	ABOVE PREMIUM	1	Side	2
2638	3061300053		0 30613 00053 1	BROOKLYN SEASONAL 6/12 BTL	ABOVE PREMIUM	1	Side	2
2616	3061300001		0 30613 00001 2	BROOKLYN LAGER 6/12 BTL	ABOVE PREMIUM	1	Side	2
13009	75452700022		7 54527 00022 6	NEW BELGIUM FAT TIRE 6/12 B...	ABOVE PREMIUM	1	Side	2
17212	8378337521		0 83783 37521 3	SIERRA NEVADA PALE ALE 6/1...	ABOVE PREMIUM	1	Side	2

Name: 2_2 - 2 W:31.00 in D:22.00 in Avail Space: 0.69 in Ht Space: 10.00 in

ID	UPC	Barcode	Name	Category	HFacings	Orientation	Units	
23900	8992427891		0 89924 27891 7	YUENGLING LAGER 6/12 BTL	PREMIUM	1	Side	2
23737	8982600009		0 89826 00009 8	TECATE 6/12 CAN	ABOVE PREMIUM	1	Side	4
15383	8066095301		0 80660 95301 4	PACIFICO 6/12 BTL	ABOVE PREMIUM	1	Front	4
10790	7231123021		0 72311 23021 6	SOL 12/12 BTL	ABOVE PREMIUM	1	Side	2
10813	7231163012		0 72311 63012 2	DOS EQUIS 6/12 BTL	ABOVE PREMIUM	1	Side	2

Name: 2_3 - 2 W:31.00 in D:22.00 in Avail Space: 1.24 in Ht Space: 10.00 in

ID	UPC	Barcode	Name	Category	HFacings	Orientation	Units	
15435	8066095755		0 80660 95755 5	MODELO ESPECIAL 6/12 CAN	ABOVE PREMIUM	1	Front	8
15456	8066095881		0 80660 95881 1	VICTORIA 6/12 BTL	ABOVE PREMIUM	1	Side	2
15408	8066095625		0 80660 95625 1	CORONA LIGHT 6/12 BTL	ABOVE PREMIUM	1	Side	2



CVS # 2558 COLD

Address: 360 6TH AVE | City: NEW YORK | State: NY

Chain/StoreNumer: CVS - EAST 2558

Reset Name: 2019 SPRING

Planogram Name: 2558_4_DOOR_COLD

15400	8066095605		CORONA 6/12 BTL	ABOVE PREMIUM	1	Side	2
86777	3354400013		CORONA REFRESCA VARIETY...	ABOVE PREMIUM	1	Side 90	2

Name: 2_4 - 2 W:31.00 in D:22.00 in Avail Space: 0.92 in Ht Space: 11.00 in

ID	UPC	Barcode	Name	Category	HFacings	Orientation	Units
15442	8066095765		MODELO ESPECIAL 6/12 BTL	ABOVE PREMIUM	1	Side	2
15448	8066095785		MODELO NEGRA 6/12 BTL	ABOVE PREMIUM	1	Side	2
15416	8066095675		CORONA LIGHT 12/12 BTL	ABOVE PREMIUM	1	Front	2
44952	3354495042		CORONA PREMIER 12/12 BTL	ABOVE PREMIUM	1	Side	2

Name: 2_5 - 2 W:31.00 in D:21.00 in Avail Space: 2.30 in Ht Space: 18.00 in

ID	UPC	Barcode	Name	Category	HFacings	Orientation	Units
15429	8066095715		MODELO ESPECIAL 12/12 CAN	ABOVE PREMIUM	1	Top	6
15429	8066095715		MODELO ESPECIAL 12/12 CAN	ABOVE PREMIUM	1	Side 90	3
15403	8066095615		CORONA 12/12 BTL	ABOVE PREMIUM	1	Front	4

Name: 2_1 W:31.00 in D:22.00 in Avail Space: 1.12 in Ht Space: 10.00 in

ID	UPC	Barcode	Name	Category	HFacings	Orientation	Units
21995	8769230050		SAMUEL ADAMS SEASONAL 6/...	ABOVE PREMIUM	1	Side	3
2625	3061300019		BROOKLYN EAST IPA 6/12 BTL	ABOVE PREMIUM	1	Side	2
21956	8769210012		SAMUEL ADAMS BOSTON LAG...	ABOVE PREMIUM	1	Side	3
62048	7199009561		BLUE MOON MANGO WHEAT 6...	ABOVE PREMIUM	1	Side	2
10190	7199009532		BLUE MOON SEASONAL 6/12 B...	ABOVE PREMIUM	1	Side	2
10180	7199009511		BLUE MOON BELGIAN WHITE 6...	ABOVE PREMIUM	1	Side	2



CVS # 2558 COLD

Address: 360 6TH AVE | City: NEW YORK | State: NY

Chain/StoreNumer: CVS - EAST 2558

Reset Name: 2019 SPRING

Planogram Name: 2558_4_DOOR_COLD

Name: 2_2		W:31.00 in	D:22.00 in	Avail Space: 1.39 in		Ht Space: 9.00 in	
ID	UPC	Barcode	Name	Category	HFacings	Orientation	Units
21072	85909300242	8 59093 00242 8	SIXPOINT SWEET ACTION 6/12 ...	ABOVE PREMIUM	1	Side 90	2
21073	85909300243	8 59093 00243 5	SIXPOINT BENGALI IPA 6/12 CAN	ABOVE PREMIUM	1	Side 90	2
13762	78036950906	7 80369 50906 1	PEAK ORGANIC SEASONAL 6/1...	ABOVE PREMIUM	1	Side 90	2
63311	78036960806	7 80369 60806 1	PEAK ORGANIC IPA 6/12 CAN	ABOVE PREMIUM	1	Side 90	2
15961	81760601020	8 17606 01020 9	CAPTAIN LAWRENCE IPA 6/12 ...	ABOVE PREMIUM	1	Side	2
15034	79837312602	7 98373 12602 0	MAGIC HAT 9 NOT QUITE PALE...	ABOVE PREMIUM	1	Side	2

Name: 2_3		W:31.00 in	D:22.00 in	Avail Space: 0.14 in		Ht Space: 10.00 in	
ID	UPC	Barcode	Name	Category	HFacings	Orientation	Units
10808	7231163001	0 72311 63001 6	PILSNER URQUELL 6/11.2 BTL	ABOVE PREMIUM	1	Side	3
14098	78615000030	7 86150 00030 4	LEFFE BLONDE 6/11.2 BTL	ABOVE PREMIUM	1	Side	3
10855	72383000020	7 23830 00020 9	LAGUNITAS LITTLE SUMPIN 6/...	ABOVE PREMIUM	1	Side	2
10845	72383000009	7 23830 00009 4	LAGUNITAS IPA 6/12 BTL	ABOVE PREMIUM	1	Side	2
69274	63598525875	6 35985 25875 9	MIKES HARDER LEMONADE 4/...	ABOVE PREMIUM	1	Front	4
6481	63598501012	6 35985 01012 8	MIKES HARDER BLACK CHERR...	ABOVE PREMIUM	1	Front	4

Name: 2_4		W:31.00 in	D:22.00 in	Avail Space: 0.37 in		Ht Space: 10.00 in	
ID	UPC	Barcode	Name	Category	HFacings	Orientation	Units
14100	78615000036	7 86150 00036 6	HOEGAARDEN WHITE 6/11.2 B...	ABOVE PREMIUM	1	Side	3
11341	7289000158	0 72890 00158 0	HEINEKEN LIGHT 6/12 BTL	ABOVE PREMIUM	1	Side	3
11298	7289000011	0 72890 00011 8	HEINEKEN 6/12 BTL	ABOVE PREMIUM	1	Side	3



CVS # 2558 COLD

Address: 360 6TH AVE | City: NEW YORK | State: NY

Chain/StoreNumer: CVS - EAST 2558

Reset Name: 2019 SPRING

Planogram Name: 2558_4_DOOR_COLD

14089	78615000001		STELLA ARTOIS 6/11.2 BTL	ABOVE PREMIUM	1	Side	3
568	18195400002		PERONI 6/11.2 BTL	ABOVE PREMIUM	1	Side	3
86788	3410051681		CAPE LINE VARIETY PACK 12/1...	ABOVE PREMIUM	1	Side 90	2

Name: 2_5 W:31.00 in D:21.00 in Avail Space: 0.17 in Ht Space: 20.00 in

ID	UPC	Barcode	Name	Category	HFacings	Orientation	Units
15426	8066095695		CORONA 12/12 CAN	ABOVE PREMIUM	1	Side	2
11300	7289000016		HEINEKEN 12/12 BTL	ABOVE PREMIUM	1	Side	6
11301	7289000020		HEINEKEN 12/12 CAN	ABOVE PREMIUM	1	Side	4
14094	78615000014		STELLA ARTOIS 12/11.2 BTL	ABOVE PREMIUM	1	Side	4
45151	63598554890		WHITE CLAW VARIETY PACK 1...	ABOVE PREMIUM	1	Front 90	6