





CVS # 10654 COLD

Address: 757 3RD AVE | City: NEW YORK | State: NY

Chain/StoreNumer: CVS - EAST 10654

Reset Name: 2019 SPRING

Planogram Name: 10654_3_DOOR_COLD

Segment # 1 : 1_5 DEPTH: 26 In WIDTH: 30 In DISTANCE FROM TOP OF BASE SHELF TO BOTTOM OF SHELF:0.00 In

| POS # | FAC | UPC | NAME | CASES | CAPACITY | UNITS HIGH | Category |
|-------|-----|-------------|---------------------------|-------|----------|------------|---------------|
| 1 | 1 | 78615000014 | STELLA ARTOIS 12/11.2 BTL | 2.0 | 4 | 1 | ABOVE PREMIUM |
| 2 | 1 | 72890000016 | HEINEKEN 12/12 BTL | 2.0 | 4 | 1 | ABOVE PREMIUM |
| 3 | 1 | 8066095675 | CORONA LIGHT 12/12 BTL | 2.0 | 4 | 1 | ABOVE PREMIUM |
| 4 | 1 | 8066095715 | MODELO ESPECIAL 12/12 CAN | 2.0 | 4 | 1 | ABOVE PREMIUM |

Segment # 1 : 1_4 DEPTH: 24 In WIDTH: 30 In DISTANCE FROM TOP OF BASE SHELF TO BOTTOM OF SHELF:24.00 In

| POS # | FAC | UPC | NAME | CASES | CAPACITY | UNITS HIGH | Category |
|-------|-----|-------------|--------------------------|-------|----------|------------|---------------|
| 1 | 1 | 78615000001 | STELLA ARTOIS 6/11.2 BTL | 1.0 | 4 | 1 | ABOVE PREMIUM |
| 2 | 1 | 72890000011 | HEINEKEN 6/12 BTL | 0.8 | 3 | 1 | ABOVE PREMIUM |
| 3 | 1 | 72890000020 | HEINEKEN 12/12 CAN | 1.0 | 2 | 1 | ABOVE PREMIUM |
| 4 | 1 | 8066095625 | CORONA LIGHT 6/12 BTL | 0.8 | 3 | 1 | ABOVE PREMIUM |
| 5 | 1 | 8066095755 | MODELO ESPECIAL 6/12 CAN | 1.5 | 6 | 1 | ABOVE PREMIUM |

Segment # 1 : 1_3 DEPTH: 24 In WIDTH: 30 In DISTANCE FROM TOP OF BASE SHELF TO BOTTOM OF SHELF:36.00 In

| POS # | FAC | UPC | NAME | CASES | CAPACITY | UNITS HIGH | Category |
|-------|-----|-------------|----------------------------------|-------|----------|------------|---------------|
| 1 | 1 | 1820013986 | SHOCK TOP BELGIAN WHITE 6/12 BTL | 0.8 | 3 | 1 | ABOVE PREMIUM |
| 2 | 1 | 78615000030 | LEFFE BLONDE 6/11.2 BTL | 0.8 | 3 | 1 | ABOVE PREMIUM |
| 3 | 1 | 72890000158 | HEINEKEN LIGHT 6/12 BTL | 0.8 | 3 | 1 | ABOVE PREMIUM |
| 4 | 1 | 18195400002 | PERONI 6/11.2 BTL | 0.8 | 3 | 1 | ABOVE PREMIUM |
| 5 | 1 | 78615000036 | HOEGAARDEN WHITE 6/11.2 BTL | 0.8 | 3 | 1 | ABOVE PREMIUM |
| 6 | 1 | 3354495041 | CORONA PREMIER 6/12 BTL | 0.8 | 3 | 1 | ABOVE PREMIUM |

Segment # 1 : 1_2 DEPTH: 24 In WIDTH: 30 In DISTANCE FROM TOP OF BASE SHELF TO BOTTOM OF SHELF:47.00 In

| POS # | FAC | UPC | NAME | CASES | CAPACITY | UNITS HIGH | Category |
|-------|-----|-------------|----------------------------------|-------|----------|------------|---------------|
| 1 | 1 | 3061300053 | BROOKLYN SEASONAL 6/12 BTL | 0.8 | 3 | 1 | ABOVE PREMIUM |
| 2 | 1 | 3061300019 | BROOKLYN EAST IPA 6/12 BTL | 0.8 | 3 | 1 | ABOVE PREMIUM |
| 3 | 1 | 7199009561 | BLUE MOON MANGO WHEAT 6/12 BTL | 0.8 | 3 | 1 | ABOVE PREMIUM |
| 4 | 1 | 7199009532 | BLUE MOON SEASONAL 6/12 BTL | 0.8 | 3 | 1 | ABOVE PREMIUM |
| 5 | 1 | 7199009511 | BLUE MOON BELGIAN WHITE 6/12 BTL | 0.8 | 3 | 1 | ABOVE PREMIUM |
| 6 | 1 | 75452700022 | NEW BELGIUM FAT TIRE 6/12 BTL | 0.8 | 3 | 1 | ABOVE PREMIUM |

Segment # 1 : 1_1 DEPTH: 12 In WIDTH: 30 In DISTANCE FROM TOP OF BASE SHELF TO BOTTOM OF SHELF:59.00 In

| POS # | FAC | UPC | NAME | CASES | CAPACITY | UNITS HIGH | Category |
|-------|-----|-------------|------------------------------------|-------|----------|------------|---------------|
| 1 | 1 | 3061300001 | BROOKLYN LAGER 6/12 BTL | 0.5 | 2 | 1 | ABOVE PREMIUM |
| 2 | 1 | 8769210012 | SAMUEL ADAMS BOSTON LAGER 6/12 BTL | 0.3 | 1 | 1 | ABOVE PREMIUM |
| 3 | 1 | 8769230050 | SAMUEL ADAMS SEASONAL 6/12 BTL (A) | 0.3 | 1 | 1 | ABOVE PREMIUM |
| 4 | 1 | 8769200127 | SAMUEL ADAMS REBEL IPA 6/12 BTL | 0.3 | 1 | 1 | ABOVE PREMIUM |
| 5 | 1 | 73692011132 | GOOSE ISLAND IPA 6/12 BTL | 0.3 | 1 | 1 | ABOVE PREMIUM |

Segment # 2 : 2_5 DEPTH: 26 In WIDTH: 30 In DISTANCE FROM TOP OF BASE SHELF TO BOTTOM OF SHELF:0.00 In

| POS # | FAC | UPC | NAME | CASES | CAPACITY | UNITS HIGH | Category |
|-------|-----|------------|---------------------|-------|----------|------------|---------------|
| 1 | 1 | 8066095615 | CORONA 12/12 BTL | 2.0 | 4 | 1 | ABOVE PREMIUM |
| 2 | 1 | 8066095695 | CORONA 12/12 CAN | 3.0 | 6 | 1 | ABOVE PREMIUM |
| 3 | 1 | 1820053218 | BUD LIGHT 18/12 CAN | 3.0 | 3 | 1 | PREMIUM |



CVS # 10654 COLD

Address: 757 3RD AVE | City: NEW YORK | State: NY

Chain/StoreNumer: CVS - EAST 10654

Reset Name: 2019 SPRING

Planogram Name: 10654_3_DOOR_COLD

| | | | | | | | |
|---|---|------------|---------------------|-----|---|---|---------|
| 4 | 1 | 1820053047 | BUD LIGHT 12/12 CAN | 3.0 | 6 | 1 | PREMIUM |
| 5 | 1 | 1820011218 | BUD 18/12 CAN | 3.0 | 3 | 1 | PREMIUM |

Segment # 2 : 2_4 DEPTH: 24 in WIDTH: 30 in DISTANCE FROM TOP OF BASE SHELF TO BOTTOM OF SHELF:25.00 in

| POS # | FAC | UPC | NAME | CASES | CAPACITY | UNITS HIGH | Category |
|-------|-----|------------|--------------------------|-------|----------|------------|---------------|
| 1 | 1 | 8066095605 | CORONA 6/12 BTL | 0.8 | 3 | 1 | ABOVE PREMIUM |
| 2 | 1 | 3354495042 | CORONA PREMIER 12/12 BTL | 1.0 | 2 | 1 | ABOVE PREMIUM |
| 3 | 1 | 8066095301 | PACIFICO 6/12 BTL | 0.8 | 3 | 1 | ABOVE PREMIUM |
| 4 | 1 | 1820000833 | BUD LIGHT 6/12 BTL | 0.8 | 3 | 1 | PREMIUM |
| 5 | 1 | 1820011047 | BUD 12/12 CAN | 1.5 | 3 | 1 | PREMIUM |

Segment # 2 : 2_3 DEPTH: 24 in WIDTH: 30 in DISTANCE FROM TOP OF BASE SHELF TO BOTTOM OF SHELF:37.00 in

| POS # | FAC | UPC | NAME | CASES | CAPACITY | UNITS HIGH | Category |
|-------|-----|------------|------------------------------------|-------|----------|------------|---------------|
| 1 | 1 | 8066095785 | MODELO NEGRA 6/12 BTL | 0.5 | 2 | 1 | ABOVE PREMIUM |
| 2 | 1 | 1820020083 | MICHELOB ULTRA PURE GOLD 12/12 BTL | 1.0 | 2 | 1 | ABOVE PREMIUM |
| 3 | 1 | 1820000771 | BUD 12/12 BTL | 1.0 | 2 | 1 | PREMIUM |
| 4 | 1 | 1820000769 | BUD LIGHT 12/12 BTL | 1.0 | 2 | 1 | PREMIUM |

Segment # 2 : 2_2 DEPTH: 24 in WIDTH: 30 in DISTANCE FROM TOP OF BASE SHELF TO BOTTOM OF SHELF:48.00 in

| POS # | FAC | UPC | NAME | CASES | CAPACITY | UNITS HIGH | Category |
|-------|-----|-------------|------------------------------------|-------|----------|------------|---------------|
| 1 | 1 | 8066095765 | MODELO ESPECIAL 6/12 BTL | 0.5 | 2 | 1 | ABOVE PREMIUM |
| 2 | 1 | 8769282102 | ANGRY ORCHARD CRISP APPLE 6/12 BTL | 0.8 | 3 | 1 | ABOVE PREMIUM |
| 3 | 1 | 63598520025 | WHITE CLAW BLACK CHERRY 6/12 CAN | 1.5 | 6 | 1 | ABOVE PREMIUM |
| 4 | 1 | 63598554890 | WHITE CLAW VARIETY PACK 12/12 CAN | 1.5 | 3 | 1 | ABOVE PREMIUM |
| 5 | 1 | 3410051681 | CAPE LINE VARIETY PACK 12/12 CAN | 1.5 | 3 | 1 | ABOVE PREMIUM |

Segment # 2 : 2_1 DEPTH: 12 in WIDTH: 30 in DISTANCE FROM TOP OF BASE SHELF TO BOTTOM OF SHELF:59.00 in

| POS # | FAC | UPC | NAME | CASES | CAPACITY | UNITS HIGH | Category |
|-------|-----|------------|-----------------------------------|-------|----------|------------|---------------|
| 1 | 1 | 8248812345 | BECKS 6/12 BTL | 0.3 | 1 | 1 | ABOVE PREMIUM |
| 2 | 1 | 8382012393 | GUINNESS EXTRA STOUT 6/12 BTL | 0.3 | 1 | 1 | ABOVE PREMIUM |
| 3 | 1 | 8992427891 | YUENGLING LAGER 6/12 BTL | 0.3 | 1 | 1 | PREMIUM |
| 4 | 1 | 3354400013 | CORONA REFRESCA VARIETY 12/12 CAN | 0.5 | 1 | 1 | ABOVE PREMIUM |
| 5 | 1 | 1820005990 | MICHELOB ULTRA 12/12 BTL | 0.5 | 1 | 1 | ABOVE PREMIUM |

Segment # 3 : 3_5 DEPTH: 26 in WIDTH: 30 in DISTANCE FROM TOP OF BASE SHELF TO BOTTOM OF SHELF:0.00 in

| POS # | FAC | UPC | NAME | CASES | CAPACITY | UNITS HIGH | Category |
|-------|-----|------------|-----------------------|-------|----------|------------|----------|
| 1 | 1 | 7199030069 | COORS LIGHT 12/12 BTL | 2.0 | 4 | 1 | PREMIUM |
| 2 | 1 | 7199000048 | COORS LIGHT 12/12 CAN | 3.0 | 6 | 1 | PREMIUM |
| 3 | 1 | 7199030017 | COORS LIGHT 18/12 CAN | 3.0 | 3 | 1 | PREMIUM |
| 4 | 1 | 3410057636 | LITE 12/12 CAN | 3.0 | 6 | 1 | PREMIUM |
| 5 | 1 | 3410057340 | LITE 18/12 CAN | 3.0 | 3 | 1 | PREMIUM |

Segment # 3 : 3_4 DEPTH: 24 in WIDTH: 30 in DISTANCE FROM TOP OF BASE SHELF TO BOTTOM OF SHELF:26.00 in

| POS # | FAC | UPC | NAME | CASES | CAPACITY | UNITS HIGH | Category |
|-------|-----|------------|----------------------|-------|----------|------------|----------|
| 1 | 1 | 7199030005 | COORS LIGHT 6/12 BTL | 0.8 | 3 | 1 | PREMIUM |
| 2 | 1 | 3410057509 | LITE 12/12 BTL | 1.0 | 2 | 1 | PREMIUM |
| 3 | 1 | 3410001509 | HIGH LIFE 12/12 BTL | 1.0 | 2 | 1 | ECONOMY |



CVS # 10654 COLD

Address: 757 3RD AVE | City: NEW YORK | State: NY

Chain/StoreNumer: CVS - EAST 10654

Reset Name: 2019 SPRING

Planogram Name: 10654_3_DOOR_COLD

| | | | | | | | |
|---|---|------------|------------------------|-----|---|---|---------|
| 4 | 1 | 2210000170 | PABST 12/12 CAN | 1.5 | 3 | 1 | ECONOMY |
| 5 | 1 | 7143934450 | ROLLING ROCK 12/12 CAN | 1.5 | 3 | 1 | ECONOMY |

Segment # 3 : 3_3 DEPTH: 24 In WIDTH: 30 In DISTANCE FROM TOP OF BASE SHELF TO BOTTOM OF SHELF:38.00 In

| POS # | FAC | UPC | NAME | CASES | CAPACITY | UNITS HIGH | Category |
|-------|-----|------------|------------------------|-------|----------|------------|----------|
| 1 | 1 | 1820025002 | NATURAL LIGHT 1/25 CAN | 0.5 | 8 | 1 | ECONOMY |
| 2 | 3 | 7199010071 | COORS BANQUET 1/24 CAN | 2.0 | 24 | 3 | PREMIUM |
| 3 | 2 | 7199030065 | COORS LIGHT 1/24 CAN | 1.3 | 16 | 2 | PREMIUM |
| 4 | 1 | 3410000355 | LITE 1/24 CAN | 0.7 | 8 | 1 | PREMIUM |
| 5 | 1 | 3410000555 | MGD 1/24 CAN | 0.7 | 8 | 1 | PREMIUM |
| 6 | 1 | 7199047712 | KEYSTONE ICE 1/24 CAN | 0.7 | 8 | 1 | ECONOMY |
| 7 | 1 | 3410000005 | HIGH LIFE 1/24 CAN | 0.7 | 8 | 1 | ECONOMY |

Segment # 3 : 3_2 DEPTH: 24 In WIDTH: 30 In DISTANCE FROM TOP OF BASE SHELF TO BOTTOM OF SHELF:48.00 In

| POS # | FAC | UPC | NAME | CASES | CAPACITY | UNITS HIGH | Category |
|-------|-----|-------------|---------------------------------------------|-------|----------|------------|---------------|
| 1 | 1 | 61300874829 | ARNOLD PALMER SPIKED HALF AND HALF 1/24 CAN | 0.7 | 8 | 1 | ABOVE PREMIUM |
| 2 | 1 | 3410000323 | REDD'S WICKED 1/24 CAN | 0.7 | 8 | 1 | ABOVE PREMIUM |
| 3 | 1 | 1820025014 | BUD LIGHT LIME LIME-A-RITA 1/25 CAN | 0.5 | 8 | 1 | ABOVE PREMIUM |
| 4 | 1 | 1820025533 | BUD LIGHT LIME MANG-O-RITA 1/25 CAN | 0.5 | 8 | 1 | ABOVE PREMIUM |
| 5 | 1 | 1820025505 | BUD LIGHT LIME STRAW-BER-RITA 1/25 CAN | 0.5 | 8 | 1 | ABOVE PREMIUM |
| 6 | 2 | 1820025001 | BUD LIGHT 1/25 CAN | 1.1 | 16 | 2 | PREMIUM |
| 7 | 3 | 1820025000 | BUD 1/25 CAN | 1.6 | 24 | 3 | PREMIUM |

Segment # 3 : 3_1 DEPTH: 12 In WIDTH: 30 In DISTANCE FROM TOP OF BASE SHELF TO BOTTOM OF SHELF:59.00 In

| POS # | FAC | UPC | NAME | CASES | CAPACITY | UNITS HIGH | Category |
|-------|-----|------------|--------------------------|-------|----------|------------|---------------|
| 1 | 2 | 7089701331 | FOSTERS 1/25.4 CAN | 0.5 | 6 | 2 | ABOVE PREMIUM |
| 2 | 2 | 7289000119 | HEINEKEN 1/24 CAN | 0.7 | 8 | 2 | ABOVE PREMIUM |
| 3 | 2 | 8797502650 | SAPPORO 1/22 CAN | 0.7 | 8 | 2 | ABOVE PREMIUM |
| 4 | 2 | 8066095643 | CORONA 1/24 CAN | 0.7 | 8 | 2 | ABOVE PREMIUM |
| 5 | 1 | 8066095796 | MODELO CHELADA 1/24 CAN | 0.3 | 4 | 1 | ABOVE PREMIUM |
| 6 | 1 | 8066095721 | MODELO ESPECIAL 1/24 CAN | 0.3 | 4 | 1 | ABOVE PREMIUM |

REVERSE VIEW (ONLY IF NEEDED)





CVS # 10654 COLD

Reset Timing 2019 SPRING

Address: 757 3RD AVE | City: NEW YORK | State: NY

REVERSE VIEW (ONLY IF NEEDED)

Segment:
1 of 3



Segment # 1 : 1_5 0.00 In

| POS | UPC | NAME |
|-----|-------------|----------------------------|
| 1 | 78615000014 | STELLA ARTOIS 12/ 11.2 BTL |
| 2 | 7289000016 | HEINEKEN 12/ 12 BTL |
| 3 | 8066095675 | CORONA LIGHT 12/ 12 BTL |
| 4 | 8066095715 | MODELO ESPECIAL 12/ 12 CAN |

Segment # 1 : 1_4 24.00 In

| POS | UPC | NAME |
|-----|-------------|---------------------------|
| 1 | 78615000001 | STELLA ARTOIS 6/ 11.2 BTL |
| 2 | 7289000011 | HEINEKEN 6/ 12 BTL |
| 3 | 7289000020 | HEINEKEN 12/ 12 CAN |
| 4 | 8066095625 | CORONA LIGHT 6/ 12 BTL |
| 5 | 8066095755 | MODELO ESPECIAL 6/ 12 CAN |

Segment # 1 : 1_3 36.00 In

| POS | UPC | NAME |
|-----|-------------|-----------------------------------|
| 1 | 1820013986 | SHOCK TOP BELGIAN WHITE 6/ 12 BTL |
| 2 | 78615000030 | LEFFE BLONDE 6/ 11.2 BTL |
| 3 | 7289000158 | HEINEKEN LIGHT 6/ 12 BTL |
| 4 | 18195400002 | PERONI 6/ 11.2 BTL |
| 5 | 78615000036 | HOEGAARDEN WHITE 6/ 11.2 BTL |
| 6 | 3354495041 | CORONA PREMIER 6/ 12 BTL |

Segment # 1 : 1_2 47.00 In

| POS | UPC | NAME |
|-----|-------------|-----------------------------------|
| 1 | 3061300053 | BROOKLYN SEASONAL 6/ 12 BTL |
| 2 | 3061300019 | BROOKLYN EAST IPA 6/ 12 BTL |
| 3 | 7199009561 | BLUE MOON MANGO WHEAT 6/ 12 BTL |
| 4 | 7199009532 | BLUE MOON SEASONAL 6/ 12 BTL |
| 5 | 7199009511 | BLUE MOON BELGIAN WHITE 6/ 12 BTL |
| 6 | 75452700022 | NEW BELGIUM FAT TIRE 6/ 12 BTL |

Segment # 1 : 1_1 59.00 In

| POS | UPC | NAME |
|-----|-------------|-------------------------------------|
| 1 | 3061300001 | BROOKLYN LAGER 6/ 12 BTL |
| 2 | 8769210012 | SAMUEL ADAMS BOSTON LAGER 6/ 12 BTL |
| 3 | 8769230050 | SAMUEL ADAMS SEASONAL 6/ 12 BTL (A) |
| 4 | 8769200127 | SAMUEL ADAMS REBEL IPA 6/ 12 BTL |
| 5 | 73692011132 | GOOSE ISLAND IPA 6/ 12 BTL |



CVS # 10654 COLD

Reset Timing 2019 SPRING

Address: 757 3RD AVE | City: NEW YORK | State: NY

REVERSE VIEW (ONLY IF NEEDED)

Segment:
2 of 3



Segment # 2 : 2_5 0.00 In

| POS | UPC | NAME |
|-----|------------|----------------------|
| 1 | 8066095615 | CORONA 12/ 12 BTL |
| 2 | 8066095695 | CORONA 12/ 12 CAN |
| 3 | 1820053218 | BUD LIGHT 18/ 12 CAN |
| 4 | 1820053047 | BUD LIGHT 12/ 12 CAN |
| 5 | 1820011218 | BUD 18/ 12 CAN |

Segment # 2 : 2_4 25.00 In

| POS | UPC | NAME |
|-----|------------|---------------------------|
| 1 | 8066095605 | CORONA 6/ 12 BTL |
| 2 | 3354495042 | CORONA PREMIER 12/ 12 BTL |
| 3 | 8066095301 | PACIFICO 6/ 12 BTL |
| 4 | 1820000833 | BUD LIGHT 6/ 12 BTL |
| 5 | 1820011047 | BUD 12/ 12 CAN |

Segment # 2 : 2_3 37.00 In

| POS | UPC | NAME |
|-----|------------|-------------------------------------|
| 1 | 8066095785 | MODELO NEGRA 6/ 12 BTL |
| 2 | 1820020083 | MICHELOB ULTRA PURE GOLD 12/ 12 BTL |
| 3 | 1820000771 | BUD 12/ 12 BTL |
| 4 | 1820000769 | BUD LIGHT 12/ 12 BTL |

Segment # 2 : 2_2 48.00 In

| POS | UPC | NAME |
|-----|-------------|-------------------------------------|
| 1 | 8066095765 | MODELO ESPECIAL 6/ 12 BTL |
| 2 | 8769282102 | ANGRY ORCHARD CRISP APPLE 6/ 12 BTL |
| 3 | 63598520025 | WHITE CLAW BLACK CHERRY 6/ 12 CAN |
| 4 | 63598554890 | WHITE CLAW VARIETY PACK 12/ 12 CAN |
| 5 | 3410051681 | CAPE LINE VARIETY PACK 12/ 12 CAN |

Segment # 2 : 2_1 59.00 In

| POS | UPC | NAME |
|-----|------------|------------------------------------|
| 1 | 8248812345 | BECKS 6/ 12 BTL |
| 2 | 8382012393 | GUINNESS EXTRA STOUT 6/ 12 BTL |
| 3 | 8992427891 | YUENGLING LAGER 6/ 12 BTL |
| 4 | 3354400013 | CORONA REFRESCA VARIETY 12/ 12 CAN |
| 5 | 1820005990 | MICHELOB ULTRA 12/ 12 BTL |



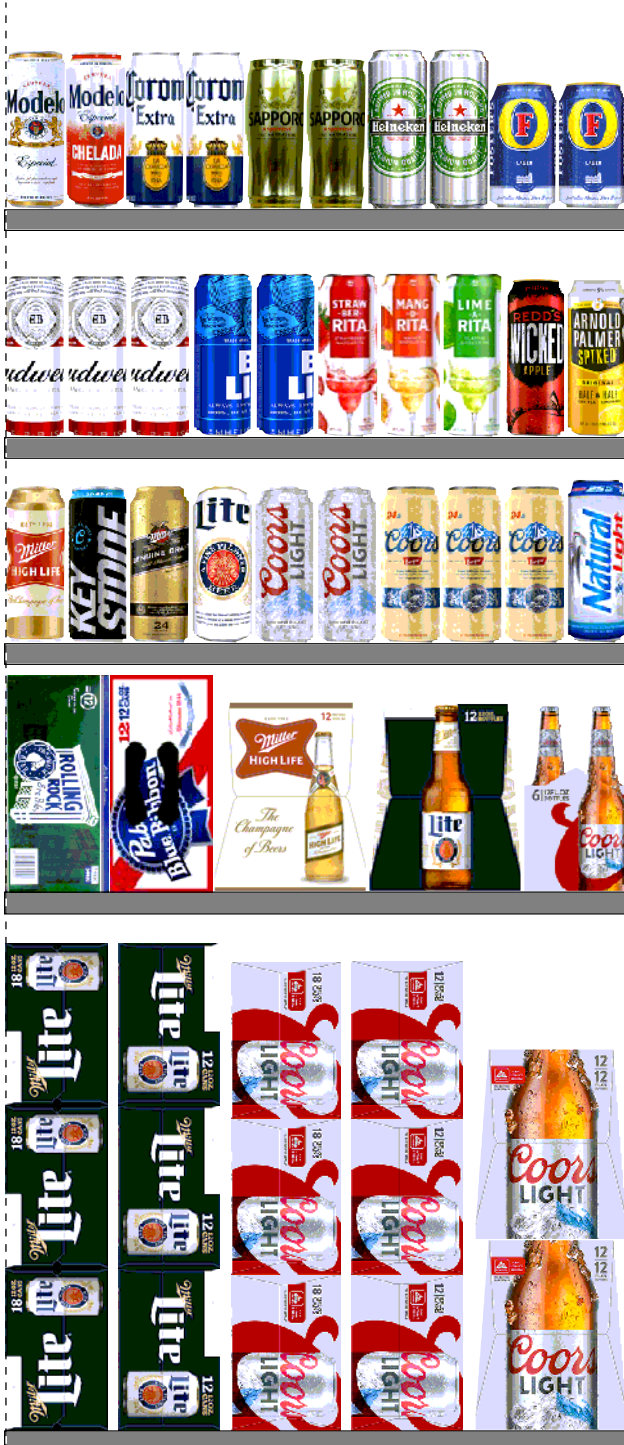
CVS # 10654 COLD

Reset Timing 2019 SPRING

Address: 757 3RD AVE | City: NEW YORK | State: NY

REVERSE VIEW (ONLY IF NEEDED)

Segment:
3 of 3



Segment # 3 : 3_5 0.00 In

| POS | UPC | NAME |
|-----|------------|------------------------|
| 1 | 7199030069 | COORS LIGHT 12/ 12 BTL |
| 2 | 7199000048 | COORS LIGHT 12/ 12 CAN |
| 3 | 7199030017 | COORS LIGHT 18/ 12 CAN |
| 4 | 3410057636 | LITE 12/ 12 CAN |
| 5 | 3410057340 | LITE 18/ 12 CAN |

Segment # 3 : 3_4 26.00 In

| POS | UPC | NAME |
|-----|------------|-------------------------|
| 1 | 7199030005 | COORS LIGHT 6/ 12 BTL |
| 2 | 3410057509 | LITE 12/ 12 BTL |
| 3 | 3410001509 | HIGH LIFE 12/ 12 BTL |
| 4 | 2210000170 | PABST 12/ 12 CAN |
| 5 | 7143934450 | ROLLING ROCK 12/ 12 CAN |

Segment # 3 : 3_3 38.00 In

| POS | UPC | NAME |
|-----|------------|-------------------------|
| 1 | 1820025002 | NATURAL LIGHT 1/ 25 CAN |
| 2 | 7199010071 | COORS BANQUET 1/ 24 CAN |
| 3 | 7199030065 | COORS LIGHT 1/ 24 CAN |
| 4 | 3410000355 | LITE 1/ 24 CAN |
| 5 | 3410000555 | MGD 1/ 24 CAN |
| 6 | 7199047712 | KEYSTONE ICE 1/ 24 CAN |
| 7 | 3410000005 | HIGH LIFE 1/ 24 CAN |

Segment # 3 : 3_2 48.00 In

| POS | UPC | NAME |
|-----|-------------|----------------------------------------------|
| 1 | 61300874829 | ARNOLD PALMER SPIKED HALF AND HALF 1/ 24 CAN |
| 2 | 3410000323 | REDD'S WICKED 1/ 24 CAN |
| 3 | 1820025014 | BUD LIGHT LIME LIME-A-RITA 1/ 25 CAN |
| 4 | 1820025533 | BUD LIGHT LIME MANG-O-RITA 1/ 25 CAN |
| 5 | 1820025505 | BUD LIGHT LIME STRAW-BER-RITA 1/ 25 CAN |
| 6 | 1820025001 | BUD LIGHT 1/ 25 CAN |
| 7 | 1820025000 | BUD 1/ 25 CAN |

Segment # 3 : 3_1 59.00 In

| POS | UPC | NAME |
|-----|------------|---------------------------|
| 1 | 7089701331 | FOSTERS 1/ 25.4 CAN |
| 2 | 7289000119 | HEINEKEN 1/ 24 CAN |
| 3 | 8797502650 | SAPPORO 1/ 22 CAN |
| 4 | 8066095643 | CORONA 1/ 24 CAN |
| 5 | 8066095796 | MODELO CHELADA 1/ 24 CAN |
| 6 | 8066095721 | MODELO ESPECIAL 1/ 24 CAN |



CVS # 10654 COLD

Address: 757 3RD AVE | City: NEW YORK | State: NY

Chain/StoreNumer: CVS - EAST 10654

Reset Name: 2019 SPRING

Planogram Name: 10654_3_DOOR_COLD

CVS PHARMA... Store # 10654 H: 5 ft 10.00 in W: 7 ft 6.00 in D: 2 ft # of segments: 3

Name: 1_1 W:30.00 in D:12.00 in Avail Space: 2.37 in Ht Space: 10.00 in

| ID | UPC | Barcode | Name | Category | HFacings | Orientation | Units |
|-------|-------------|-----------------|------------------------------|---------------|----------|-------------|-------|
| 2616 | 3061300001 | 0 30613 00001 2 | BROOKLYN LAGER 6/12 BTL | ABOVE PREMIUM | 1 | Front | 2 |
| 21956 | 8769210012 | 0 87692 10012 6 | SAMUEL ADAMS BOSTON LAG... | ABOVE PREMIUM | 1 | Side | 1 |
| 21995 | 8769230050 | 0 87692 30050 2 | SAMUEL ADAMS SEASONAL 6/... | ABOVE PREMIUM | 1 | Side | 1 |
| 21860 | 8769200127 | 0 87692 00127 0 | SAMUEL ADAMS REBEL IPA 6/... | ABOVE PREMIUM | 1 | Side | 1 |
| 11951 | 73692011132 | 7 36920 11132 7 | GOOSE ISLAND IPA 6/12 BTL | ABOVE PREMIUM | 1 | Side | 1 |

Name: 1_2 W:30.00 in D:24.00 in Avail Space: 0.11 in Ht Space: 11.00 in

| ID | UPC | Barcode | Name | Category | HFacings | Orientation | Units |
|-------|-------------|-----------------|--------------------------------|---------------|----------|-------------|-------|
| 2638 | 3061300053 | 0 30613 00053 1 | BROOKLYN SEASONAL 6/12 BTL | ABOVE PREMIUM | 1 | Side | 3 |
| 2625 | 3061300019 | 0 30613 00019 7 | BROOKLYN EAST IPA 6/12 BTL | ABOVE PREMIUM | 1 | Side | 3 |
| 62048 | 7199009561 | 0 71990 09561 1 | BLUE MOON MANGO WHEAT 6... | ABOVE PREMIUM | 1 | Side | 3 |
| 10190 | 7199009532 | 0 71990 09532 1 | BLUE MOON SEASONAL 6/12 B... | ABOVE PREMIUM | 1 | Side | 3 |
| 10180 | 7199009511 | 0 71990 09511 6 | BLUE MOON BELGIAN WHITE 6... | ABOVE PREMIUM | 1 | Side | 3 |
| 13009 | 75452700022 | 7 54527 00022 6 | NEW BELGIUM FAT TIRE 6/12 B... | ABOVE PREMIUM | 1 | Side | 3 |

Name: 1_3 W:30.00 in D:24.00 in Avail Space: 0.10 in Ht Space: 10.00 in

| ID | UPC | Barcode | Name | Category | HFacings | Orientation | Units |
|-------|-------------|-----------------|------------------------------|---------------|----------|-------------|-------|
| 1345 | 1820013986 | 0 18200 13986 4 | SHOCK TOP BELGIAN WHITE 6... | ABOVE PREMIUM | 1 | Side | 3 |
| 14098 | 78615000030 | 7 86150 00030 4 | LEFFE BLONDE 6/11.2 BTL | ABOVE PREMIUM | 1 | Side | 3 |
| 11341 | 7289000158 | 0 72890 00158 0 | HEINEKEN LIGHT 6/12 BTL | ABOVE PREMIUM | 1 | Side | 3 |



CVS # 10654 COLD

Address: 757 3RD AVE | City: NEW YORK | State: NY

Chain/StoreNumer: CVS - EAST 10654

Reset Name: 2019 SPRING

Planogram Name: 10654_3_DOOR_COLD

| | | | | | | | |
|-------|-------------|--|------------------------------|---------------|---|------|---|
| 568 | 18195400002 | | PERONI 6/11.2 BTL | ABOVE PREMIUM | 1 | Side | 3 |
| 14100 | 78615000036 | | HOEGAARDEN WHITE 6/11.2 B... | ABOVE PREMIUM | 1 | Side | 3 |
| 44964 | 3354495041 | | CORONA PREMIER 6/12 BTL | ABOVE PREMIUM | 1 | Side | 3 |

Name: 1_4 W:30.00 in D:24.00 in Avail Space: 2.37 in Ht Space: 11.00 in

| ID | UPC | Barcode | Name | Category | HFacings | Orientation | Units |
|-------|-------------|---------|--------------------------|---------------|----------|-------------|-------|
| 14089 | 78615000001 | | STELLA ARTOIS 6/11.2 BTL | ABOVE PREMIUM | 1 | Front | 4 |
| 11298 | 7289000011 | | HEINEKEN 6/12 BTL | ABOVE PREMIUM | 1 | Side | 3 |
| 11301 | 7289000020 | | HEINEKEN 12/12 CAN | ABOVE PREMIUM | 1 | Side | 2 |
| 15408 | 8066095625 | | CORONA LIGHT 6/12 BTL | ABOVE PREMIUM | 1 | Side | 3 |
| 15435 | 8066095755 | | MODELO ESPECIAL 6/12 CAN | ABOVE PREMIUM | 1 | Side | 6 |

Name: 1_5 W:30.00 in D:26.00 in Avail Space: 2.52 in Ht Space: 23.00 in

| ID | UPC | Barcode | Name | Category | HFacings | Orientation | Units |
|-------|-------------|---------|---------------------------|---------------|----------|-------------|-------|
| 14094 | 78615000014 | | STELLA ARTOIS 12/11.2 BTL | ABOVE PREMIUM | 1 | Side | 4 |
| 11300 | 7289000016 | | HEINEKEN 12/12 BTL | ABOVE PREMIUM | 1 | Side | 4 |
| 15416 | 8066095675 | | CORONA LIGHT 12/12 BTL | ABOVE PREMIUM | 1 | Side | 4 |
| 15429 | 8066095715 | | MODELO ESPECIAL 12/12 CAN | ABOVE PREMIUM | 1 | Side | 4 |

Name: 2_1 W:30.00 in D:12.00 in Avail Space: 1.26 in Ht Space: 10.00 in

| ID | UPC | Barcode | Name | Category | HFacings | Orientation | Units |
|-------|------------|---------|------------------------------|---------------|----------|-------------|-------|
| 16693 | 8248812345 | | BECKS 6/12 BTL | ABOVE PREMIUM | 1 | Side | 1 |
| 17305 | 8382012393 | | GUINNESS EXTRA STOUT 6/12... | ABOVE PREMIUM | 1 | Side | 1 |
| 23900 | 8992427891 | | YUENGLING LAGER 6/12 BTL | PREMIUM | 1 | Side | 1 |



CVS # 10654 COLD

Address: 757 3RD AVE | City: NEW YORK | State: NY

Chain/StoreNumer: CVS - EAST 10654

Reset Name: 2019 SPRING

Planogram Name: 10654_3_DOOR_COLD

| | | | | | | | |
|-------|------------|--|----------------------------|---------------|---|--------|---|
| 86777 | 3354400013 | | CORONA REFRESCA VARIETY... | ABOVE PREMIUM | 1 | Top 90 | 1 |
| 1228 | 1820005990 | | MICHELOB ULTRA 12/12 BTL | ABOVE PREMIUM | 1 | Side | 1 |

Name: 2_2 W:30.00 in D:24.00 in Avail Space: 0.42 in Ht Space: 10.00 in

| ID | UPC | Barcode | Name | Category | HFacings | Orientation | Units |
|-------|-------------|---------|--------------------------------|---------------|----------|-------------|-------|
| 15442 | 8066095765 | | MODELO ESPECIAL 6/12 BTL | ABOVE PREMIUM | 1 | Side | 2 |
| 22090 | 8769282102 | | ANGRY ORCHARD CRISP APP... | ABOVE PREMIUM | 1 | Side | 3 |
| 6441 | 63598520025 | | WHITE CLAW BLACK CHERRY ... | ABOVE PREMIUM | 1 | Side 90 | 6 |
| 45151 | 63598554890 | | WHITE CLAW VARIETY PACK 1... | ABOVE PREMIUM | 1 | Front 90 | 3 |
| 86788 | 3410051681 | | CAPE LINE VARIETY PACK 12/1... | ABOVE PREMIUM | 1 | Front 90 | 3 |

Name: 2_3 W:30.00 in D:24.00 in Avail Space: 1.84 in Ht Space: 10.00 in

| ID | UPC | Barcode | Name | Category | HFacings | Orientation | Units |
|-------|------------|---------|-----------------------------|---------------|----------|-------------|-------|
| 15448 | 8066095785 | | MODELO NEGRA 6/12 BTL | ABOVE PREMIUM | 1 | Side | 2 |
| 65828 | 1820020083 | | MICHELOB ULTRA PURE GOLD... | ABOVE PREMIUM | 1 | Side | 2 |
| 1058 | 1820000771 | | BUD 12/12 BTL | PREMIUM | 1 | Side | 2 |
| 1056 | 1820000769 | | BUD LIGHT 12/12 BTL | PREMIUM | 1 | Side | 2 |

Name: 2_4 W:30.00 in D:24.00 in Avail Space: 1.88 in Ht Space: 11.00 in

| ID | UPC | Barcode | Name | Category | HFacings | Orientation | Units |
|-------|------------|---------|--------------------------|---------------|----------|-------------|-------|
| 15400 | 8066095605 | | CORONA 6/12 BTL | ABOVE PREMIUM | 1 | Side | 3 |
| 44952 | 3354495042 | | CORONA PREMIER 12/12 BTL | ABOVE PREMIUM | 1 | Side | 2 |
| 15383 | 8066095301 | | PACIFICO 6/12 BTL | ABOVE PREMIUM | 1 | Side | 3 |
| 1083 | 1820000833 | | BUD LIGHT 6/12 BTL | PREMIUM | 1 | Side | 3 |



CVS # 10654 COLD

Address: 757 3RD AVE | City: NEW YORK | State: NY

Chain/StoreNumer: CVS - EAST 10654

Reset Name: 2019 SPRING

Planogram Name: 10654_3_DOOR_COLD

| | | | | | | | | |
|------|------------|--|---|---------------|---------|---|--------|---|
| 1297 | 1820011047 | | 4 | BUD 12/12 CAN | PREMIUM | 1 | Top 90 | 3 |
|------|------------|--|---|---------------|---------|---|--------|---|

Name: 2_5 W:30.00 in D:26.00 in Avail Space: 2.48 in Ht Space: 24.00 in

| ID | UPC | Barcode | | Name | Category | HFacings | Orientation | Units |
|-------|------------|---------|---|---------------------|---------------|----------|-------------|-------|
| 15403 | 8066095615 | | 2 | CORONA 12/12 BTL | ABOVE PREMIUM | 1 | Side | 4 |
| 15426 | 8066095695 | | 4 | CORONA 12/12 CAN | ABOVE PREMIUM | 1 | Side | 6 |
| 1667 | 1820053218 | | 4 | BUD LIGHT 18/12 CAN | PREMIUM | 1 | Side | 3 |
| 1659 | 1820053047 | | 0 | BUD LIGHT 12/12 CAN | PREMIUM | 1 | Side | 6 |
| 1307 | 1820011218 | | 8 | BUD 18/12 CAN | PREMIUM | 1 | Side | 3 |

Name: 3_1 W:30.00 in D:12.00 in Avail Space: 0.23 in Ht Space: 10.00 in

| ID | UPC | Barcode | | Name | Category | HFacings | Orientation | Units |
|-------|------------|---------|---|--------------------------|---------------|----------|-------------|-------|
| 9452 | 7089701331 | | 5 | FOSTERS 1/25.4 CAN | ABOVE PREMIUM | 2 | Front | 6 |
| 11327 | 7289000119 | | 1 | HEINEKEN 1/24 CAN | ABOVE PREMIUM | 2 | Front | 8 |
| 22227 | 8797502650 | | 1 | SAPPORO 1/22 CAN | ABOVE PREMIUM | 2 | Front | 8 |
| 15415 | 8066095643 | | 5 | CORONA 1/24 CAN | ABOVE PREMIUM | 2 | Front | 8 |
| 15453 | 8066095796 | | 8 | MODELO CHELADA 1/24 CAN | ABOVE PREMIUM | 1 | Front | 4 |
| 15431 | 8066095721 | | 0 | MODELO ESPECIAL 1/24 CAN | ABOVE PREMIUM | 1 | Front | 4 |

Name: 3_2 W:30.00 in D:24.00 in Avail Space: 1.32 in Ht Space: 10.00 in

| ID | UPC | Barcode | | Name | Category | HFacings | Orientation | Units |
|-------|-------------|---------|---|---------------------------------|---------------|----------|-------------|-------|
| 66064 | 61300874829 | | 6 | ARNOLD PALMER SPIKED HAL... | ABOVE PREMIUM | 1 | Side | 8 |
| 2935 | 3410000323 | | 4 | REDD'S WICKED 1/24 CAN | ABOVE PREMIUM | 1 | Front | 8 |
| 1534 | 1820025014 | | 9 | BUD LIGHT LIME LIME-A-RITA 1... | ABOVE PREMIUM | 1 | Front | 8 |



CVS # 10654 COLD

Address: 757 3RD AVE | City: NEW YORK | State: NY

Chain/StoreNumer: CVS - EAST 10654

Reset Name: 2019 SPRING

Planogram Name: 10654_3_DOOR_COLD

| | | | | | | | |
|------|------------|--|-------------------------------|---------------|---|-------|----|
| 1561 | 1820025533 | | BUD LIGHT LIME MANG-O-RITA... | ABOVE PREMIUM | 1 | Front | 8 |
| 1546 | 1820025505 | | BUD LIGHT LIME STRAW-BER... | ABOVE PREMIUM | 1 | Front | 8 |
| 1521 | 1820025001 | | BUD LIGHT 1/25 CAN | PREMIUM | 2 | Front | 16 |
| 1520 | 1820025000 | | BUD 1/25 CAN | PREMIUM | 3 | Front | 24 |

Name: 3_3 W:30.00 in D:24.00 in Avail Space: 1.37 in Ht Space: 9.00 in

| ID | UPC | Barcode | Name | Category | HFacings | Orientation | Units |
|-------|------------|---------|------------------------|----------|----------|-------------|-------|
| 1522 | 1820025002 | | NATURAL LIGHT 1/25 CAN | ECONOMY | 1 | Front | 8 |
| 10243 | 7199010071 | | COORS BANQUET 1/24 CAN | PREMIUM | 3 | Front | 24 |
| 10346 | 7199030065 | | COORS LIGHT 1/24 CAN | PREMIUM | 2 | Front | 16 |
| 2968 | 3410000355 | | LITE 1/24 CAN | PREMIUM | 1 | Front | 8 |
| 3014 | 3410000555 | | MGD 1/24 CAN | PREMIUM | 1 | Front | 8 |
| 10412 | 7199047712 | | KEYSTONE ICE 1/24 CAN | ECONOMY | 1 | Front | 8 |
| 2761 | 3410000005 | | HIGH LIFE 1/24 CAN | ECONOMY | 1 | Front | 8 |

Name: 3_4 W:30.00 in D:24.00 in Avail Space: 0.51 in Ht Space: 11.00 in

| ID | UPC | Barcode | Name | Category | HFacings | Orientation | Units |
|-------|------------|---------|------------------------|----------|----------|-------------|-------|
| 10322 | 7199030005 | | COORS LIGHT 6/12 BTL | PREMIUM | 1 | Side | 3 |
| 3565 | 3410057509 | | LITE 12/12 BTL | PREMIUM | 1 | Side | 2 |
| 3198 | 3410001509 | | HIGH LIFE 12/12 BTL | ECONOMY | 1 | Side | 2 |
| 2241 | 2210000170 | | PABST 12/12 CAN | ECONOMY | 1 | Top 90 | 3 |
| 9886 | 7143934450 | | ROLLING ROCK 12/12 CAN | ECONOMY | 1 | Top 90 | 3 |



CVS # 10654 COLD

Address: 757 3RD AVE | City: NEW YORK | State: NY

Chain/StoreNumer: CVS - EAST 10654

Reset Name: 2019 SPRING

Planogram Name: 10654_3_DOOR_COLD

Name: 3_5 W:30.00 in D:26.00 in Avail Space: 2.23 in Ht Space: 25.00 in

| ID | UPC | Barcode | Name | Category | HFacings | Orientation | Units |
|-------|------------|---------------------------------------------------------------------------------------------------|-----------------------|----------|----------|-------------|-------|
| 10348 | 7199030069 |  0 71990 30069 2 | COORS LIGHT 12/12 BTL | PREMIUM | 1 | Side | 4 |
| 10164 | 7199000048 |  0 71990 00048 6 | COORS LIGHT 12/12 CAN | PREMIUM | 1 | Side | 6 |
| 10329 | 7199030017 |  0 71990 30017 3 | COORS LIGHT 18/12 CAN | PREMIUM | 1 | Side | 3 |
| 3579 | 3410057636 |  0 34100 57636 3 | LITE 12/12 CAN | PREMIUM | 1 | Side | 6 |
| 3552 | 3410057340 |  0 34100 57340 9 | LITE 18/12 CAN | PREMIUM | 1 | Side | 3 |