





CVS # 2435 COLD

Address: 75 CHRISTOPHER ST | City: NEW YORK | State: NY

Chain/StoreNumer: CVS - EAST 2435

Reset Name: 2019 SPRING

Planogram Name: 2435\_2\_DOOR\_COLD

Segment # 1 : 1\_4 - 1 DEPTH: 24 in WIDTH: 30 in DISTANCE FROM TOP OF BASE SHELF TO BOTTOM OF SHELF:0.00 in

| POS # | FAC | UPC        | NAME                  | CASES | CAPACITY | UNITS HIGH | Category |
|-------|-----|------------|-----------------------|-------|----------|------------|----------|
| 1     | 1   | 3410057340 | LITE 18/12 CAN        | 3.0   | 3        | 1          | PREMIUM  |
| 2     | 1   | 7199030017 | COORS LIGHT 18/12 CAN | 3.0   | 3        | 1          | PREMIUM  |
| 3     | 1   | 7199000048 | COORS LIGHT 12/12 CAN | 2.0   | 4        | 1          | PREMIUM  |
| 4     | 1   | 1820011218 | BUD 18/12 CAN         | 3.0   | 3        | 1          | PREMIUM  |
| 5     | 1   | 1820053218 | BUD LIGHT 18/12 CAN   | 3.0   | 3        | 1          | PREMIUM  |

Segment # 1 : 1\_3 - 2 DEPTH: 24 in WIDTH: 30 in DISTANCE FROM TOP OF BASE SHELF TO BOTTOM OF SHELF:17.00 in

| POS # | FAC | UPC        | NAME                   | CASES | CAPACITY | UNITS HIGH | Category |
|-------|-----|------------|------------------------|-------|----------|------------|----------|
| 1     | 1   | 7143934450 | ROLLING ROCK 12/12 CAN | 1.5   | 3        | 1          | ECONOMY  |
| 2     | 1   | 2210000170 | PABST 12/12 CAN        | 1.5   | 3        | 1          | ECONOMY  |
| 3     | 1   | 7199030005 | COORS LIGHT 6/12 BTL   | 0.8   | 3        | 1          | PREMIUM  |
| 4     | 1   | 3410057636 | LITE 12/12 CAN         | 1.5   | 3        | 1          | PREMIUM  |
| 5     | 1   | 1820011047 | BUD 12/12 CAN          | 1.5   | 3        | 1          | PREMIUM  |
| 6     | 1   | 1820053047 | BUD LIGHT 12/12 CAN    | 1.5   | 3        | 1          | PREMIUM  |

Segment # 1 : 1\_3 - 1 DEPTH: 24 in WIDTH: 30 in DISTANCE FROM TOP OF BASE SHELF TO BOTTOM OF SHELF:29.00 in

| POS # | FAC | UPC         | NAME                     | CASES | CAPACITY | UNITS HIGH | Category      |
|-------|-----|-------------|--------------------------|-------|----------|------------|---------------|
| 1     | 1   | 1820000833  | BUD LIGHT 6/12 BTL       | 1.0   | 4        | 1          | PREMIUM       |
| 2     | 1   | 1820000834  | BUD 6/12 BTL             | 0.8   | 3        | 1          | PREMIUM       |
| 3     | 1   | 8992427891  | YUENGLING LAGER 6/12 BTL | 0.8   | 3        | 1          | PREMIUM       |
| 4     | 1   | 72383000009 | LAGUNITAS IPA 6/12 BTL   | 0.8   | 3        | 1          | ABOVE PREMIUM |
| 5     | 1   | 8066095301  | PACIFICO 6/12 BTL        | 0.8   | 3        | 1          | ABOVE PREMIUM |

Segment # 1 : 2\_2 - 1 DEPTH: 24 in WIDTH: 30 in DISTANCE FROM TOP OF BASE SHELF TO BOTTOM OF SHELF:39.00 in

| POS # | FAC | UPC         | NAME                                   | CASES | CAPACITY | UNITS HIGH | Category      |
|-------|-----|-------------|--|-------|----------|------------|---------------|
| 1     | 1   | 3410051681  | CAPE LINE VARIETY PACK 12/12 CAN       | 1.5   | 3        | 1          | ABOVE PREMIUM |
| 2     | 1   | 8378337521  | SIERRA NEVADA PALE ALE 6/12 BTL        | 0.5   | 2        | 1          | ABOVE PREMIUM |
| 3     | 1   | 8378322822  | SIERRA NEVADA SEASONAL 6/12 BTL        | 0.5   | 2        | 1          | ABOVE PREMIUM |
| 4     | 1   | 81760601000 | CAPTAIN LAWRENCE FRESHCHESTER 6/12 BTL | 0.8   | 3        | 1          | ABOVE PREMIUM |
| 5     | 1   | 81760601020 | CAPTAIN LAWRENCE IPA 6/12 BTL          | 0.8   | 3        | 1          | ABOVE PREMIUM |

Segment # 1 : 1\_1 - 1 DEPTH: 24 in WIDTH: 30 in DISTANCE FROM TOP OF BASE SHELF TO BOTTOM OF SHELF:49.00 in

| POS # | FAC | UPC         | NAME                                  | CASES | CAPACITY | UNITS HIGH | Category      |
|-------|-----|-------------|---------------------------------------|-------|----------|------------|---------------|
| 1     | 1   | 8200072385  | SMIRNOFF ICE ORIGINAL 6/11.2 BTL      | 0.8   | 3        | 1          | ABOVE PREMIUM |
| 2     | 1   | 8769282102  | ANGRY ORCHARD CRISP APPLE 6/12 BTL    | 0.8   | 3        | 1          | ABOVE PREMIUM |
| 3     | 1   | 1820013986  | SHOCK TOP BELGIAN WHITE 6/12 BTL      | 0.8   | 3        | 1          | ABOVE PREMIUM |
| 4     | 1   | 88715100094 | CONEY ISLAND MERMAID PILSNER 6/12 BTL | 0.8   | 3        | 1          | ABOVE PREMIUM |
| 5     | 1   | 73692011132 | GOOSE ISLAND IPA 6/12 BTL             | 0.8   | 3        | 1          | ABOVE PREMIUM |
| 6     | 1   | 75452700022 | NEW BELGIUM FAT TIRE 6/12 BTL         | 0.8   | 3        | 1          | ABOVE PREMIUM |

Segment # 2 : 2\_5 DEPTH: 24 in WIDTH: 30 in DISTANCE FROM TOP OF BASE SHELF TO BOTTOM OF SHELF:0.00 in

| POS # | FAC | UPC         | NAME                              | CASES | CAPACITY | UNITS HIGH | Category      |
|-------|-----|-------------|-----------------------------------|-------|----------|------------|---------------|
| 1     | 1   | 8066095715  | MODELO ESPECIAL 12/12 CAN         | 4.5   | 9        | 1          | ABOVE PREMIUM |
| 2     | 1   | 63598554890 | WHITE CLAW VARIETY PACK 12/12 CAN | 2.0   | 4        | 1          | ABOVE PREMIUM |



CVS # 2435 COLD

Address: 75 CHRISTOPHER ST | City: NEW YORK | State: NY

Chain/StoreNumer: CVS - EAST 2435

Reset Name: 2019 SPRING

Planogram Name: 2435\_2\_DOOR\_COLD

|   |   |            |                    |     |   |   |               |
|---|---|------------|--------------------|-----|---|---|---------------|
| 3 | 1 | 7289000011 | HEINEKEN 6/12 BTL  | 0.8 | 3 | 1 | ABOVE PREMIUM |
| 4 | 1 | 7289000016 | HEINEKEN 12/12 BTL | 1.0 | 2 | 1 | ABOVE PREMIUM |

**Segment # 2 : 2\_3 - 1 DEPTH: 24 in WIDTH: 30 in DISTANCE FROM TOP OF BASE SHELF TO BOTTOM OF SHELF:17.00 in**

| POS # | FAC | UPC        | NAME                              | CASES | CAPACITY | UNITS HIGH | Category      |
|-------|-----|------------|-----------------------------------|-------|----------|------------|---------------|
| 1     | 1   | 8066095755 | MODELO ESPECIAL 6/12 CAN          | 1.5   | 6        | 1          | ABOVE PREMIUM |
| 2     | 1   | 8066095685 | CORONA 6/12 CAN                   | 1.5   | 6        | 1          | ABOVE PREMIUM |
| 3     | 1   | 8066095615 | CORONA 12/12 BTL                  | 1.0   | 2        | 1          | ABOVE PREMIUM |
| 4     | 1   | 3354400013 | CORONA REFRESCA VARIETY 12/12 CAN | 1.5   | 3        | 1          | ABOVE PREMIUM |
| 5     | 1   | 7289000158 | HEINEKEN LIGHT 6/12 BTL           | 0.8   | 3        | 1          | ABOVE PREMIUM |

**Segment # 2 : 2\_3 DEPTH: 24 in WIDTH: 30 in DISTANCE FROM TOP OF BASE SHELF TO BOTTOM OF SHELF:28.00 in**

| POS # | FAC | UPC        | NAME                      | CASES | CAPACITY | UNITS HIGH | Category      |
|-------|-----|------------|---------------------------|-------|----------|------------|---------------|
| 1     | 1   | 8066095625 | CORONA LIGHT 6/12 BTL     | 0.8   | 3        | 1          | ABOVE PREMIUM |
| 2     | 1   | 3354495041 | CORONA PREMIER 6/12 BTL   | 0.8   | 3        | 1          | ABOVE PREMIUM |
| 3     | 1   | 8066095605 | CORONA 6/12 BTL           | 0.8   | 3        | 1          | ABOVE PREMIUM |
| 4     | 1   | 7861500014 | STELLA ARTOIS 12/11.2 BTL | 1.0   | 2        | 1          | ABOVE PREMIUM |
| 5     | 1   | 7861500001 | STELLA ARTOIS 6/11.2 BTL  | 0.8   | 3        | 1          | ABOVE PREMIUM |

**Segment # 2 : 2\_2 DEPTH: 24 in WIDTH: 30 in DISTANCE FROM TOP OF BASE SHELF TO BOTTOM OF SHELF:39.00 in**

| POS # | FAC | UPC         | NAME                               | CASES | CAPACITY | UNITS HIGH | Category      |
|-------|-----|-------------|------------------------------------|-------|----------|------------|---------------|
| 1     | 1   | 3061300001  | BROOKLYN LAGER 6/12 BTL            | 0.8   | 3        | 1          | ABOVE PREMIUM |
| 2     | 1   | 7199009511  | BLUE MOON BELGIAN WHITE 6/12 BTL   | 0.8   | 3        | 1          | ABOVE PREMIUM |
| 3     | 1   | 8769230050  | SAMUEL ADAMS SEASONAL 6/12 BTL (A) | 0.8   | 3        | 1          | ABOVE PREMIUM |
| 4     | 1   | 18195400002 | PERONI 6/11.2 BTL                  | 0.8   | 3        | 1          | ABOVE PREMIUM |
| 5     | 1   | 8248812345  | BECKS 6/12 BTL                     | 0.8   | 3        | 1          | ABOVE PREMIUM |
| 6     | 1   | 78615000036 | HOEGAARDEN WHITE 6/11.2 BTL        | 0.8   | 3        | 1          | ABOVE PREMIUM |

**Segment # 2 : 2\_1 DEPTH: 24 in WIDTH: 30 in DISTANCE FROM TOP OF BASE SHELF TO BOTTOM OF SHELF:49.00 in**

| POS # | FAC | UPC         | NAME                                     | CASES | CAPACITY | UNITS HIGH | Category      |
|-------|-----|-------------|--|-------|----------|------------|---------------|
| 1     | 1   | 3061300053  | BROOKLYN SEASONAL 6/12 BTL               | 0.8   | 3        | 1          | ABOVE PREMIUM |
| 2     | 1   | 3061300019  | BROOKLYN EAST IPA 6/12 BTL               | 0.8   | 3        | 1          | ABOVE PREMIUM |
| 3     | 1   | 79837312602 | MAGIC HAT 9 NOT QUITE PALE ALE 6/12 BTL  | 0.8   | 3        | 1          | ABOVE PREMIUM |
| 4     | 1   | 78036950906 | PEAK ORGANIC SEASONAL 6/12 CAN           | 1.0   | 4        | 1          | ABOVE PREMIUM |
| 5     | 1   | 78036960806 | PEAK ORGANIC IPA 6/12 CAN                | 1.5   | 6        | 1          | ABOVE PREMIUM |
| 6     | 1   | 85961200103 | 21ST AMENDMENT BREW FREE OR DIE 6/12 CAN | 1.5   | 6        | 1          | ABOVE PREMIUM |

# REVERSE VIEW (ONLY IF NEEDED)







CVS # 2435 COLD

Reset Timing 2019 SPRING

Address: 75 CHRISTOPHER ST | City: NEW YORK | State: NY

**REVERSE VIEW (ONLY IF NEEDED)**

Segment:  
1 of 2



**Segment # 1 : 1\_4 - 1 0.00 In**

| POS | UPC        | NAME                   |
|-----|------------|------------------------|
| 1   | 3410057340 | LITE 18/ 12 CAN        |
| 2   | 7199030017 | COORS LIGHT 18/ 12 CAN |
| 3   | 7199000048 | COORS LIGHT 12/ 12 CAN |
| 4   | 1820011218 | BUD 18/ 12 CAN         |
| 5   | 1820053218 | BUD LIGHT 18/ 12 CAN   |

**Segment # 1 : 1\_3 - 2 17.00 In**

| POS | UPC        | NAME                    |
|-----|------------|-------------------------|
| 1   | 7143934450 | ROLLING ROCK 12/ 12 CAN |
| 2   | 2210000170 | PABST 12/ 12 CAN        |
| 3   | 7199030005 | COORS LIGHT 6/ 12 BTL   |
| 4   | 3410057636 | LITE 12/ 12 CAN         |
| 5   | 1820011047 | BUD 12/ 12 CAN          |
| 6   | 1820053047 | BUD LIGHT 12/ 12 CAN    |

**Segment # 1 : 1\_3 - 1 29.00 In**

| POS | UPC         | NAME                      |
|-----|-------------|---------------------------|
| 1   | 1820000833  | BUD LIGHT 6/ 12 BTL       |
| 2   | 1820000834  | BUD 6/ 12 BTL             |
| 3   | 8992427891  | YUENGLING LAGER 6/ 12 BTL |
| 4   | 72383000009 | LAGUNITAS IPA 6/ 12 BTL   |
| 5   | 8066095301  | PACIFICO 6/ 12 BTL        |

**Segment # 1 : 2\_2 - 1 39.00 In**

| POS | UPC         | NAME                                    |
|-----|-------------|---|
| 1   | 3410051681  | CAPE LINE VARIETY PACK 12/ 12 CAN       |
| 2   | 8378337521  | SIERRA NEVADA PALE ALE 6/ 12 BTL        |
| 3   | 8378322822  | SIERRA NEVADA SEASONAL 6/ 12 BTL        |
| 4   | 81760601000 | CAPTAIN LAWRENCE FRESHCHESTER 6/ 12 BTL |
| 5   | 81760601020 | CAPTAIN LAWRENCE IPA 6/ 12 BTL          |

**Segment # 1 : 1\_1 - 1 49.00 In**

| POS | UPC         | NAME                                  |
|-----|-------------|---------------------------------------|
| 1   | 8200072385  | SMIRNOFF ICE ORIGINAL 6/ 11.2 BTL     |
| 2   | 8769282102  | ANGRY ORCHARD CRISP APPLE 6/ 12 BTL   |
| 3   | 1820013986  | SHOCK TOP BELGIAN WHITE 6/ 12 BTL     |
| 4   | 88715100094 | CONY ISLAND MERMAID PILSNER 6/ 12 BTL |
| 5   | 73692011132 | GOOSE ISLAND IPA 6/ 12 BTL            |
| 6   | 75452700022 | NEW BELGIUM FAT TIRE 6/ 12 BTL        |



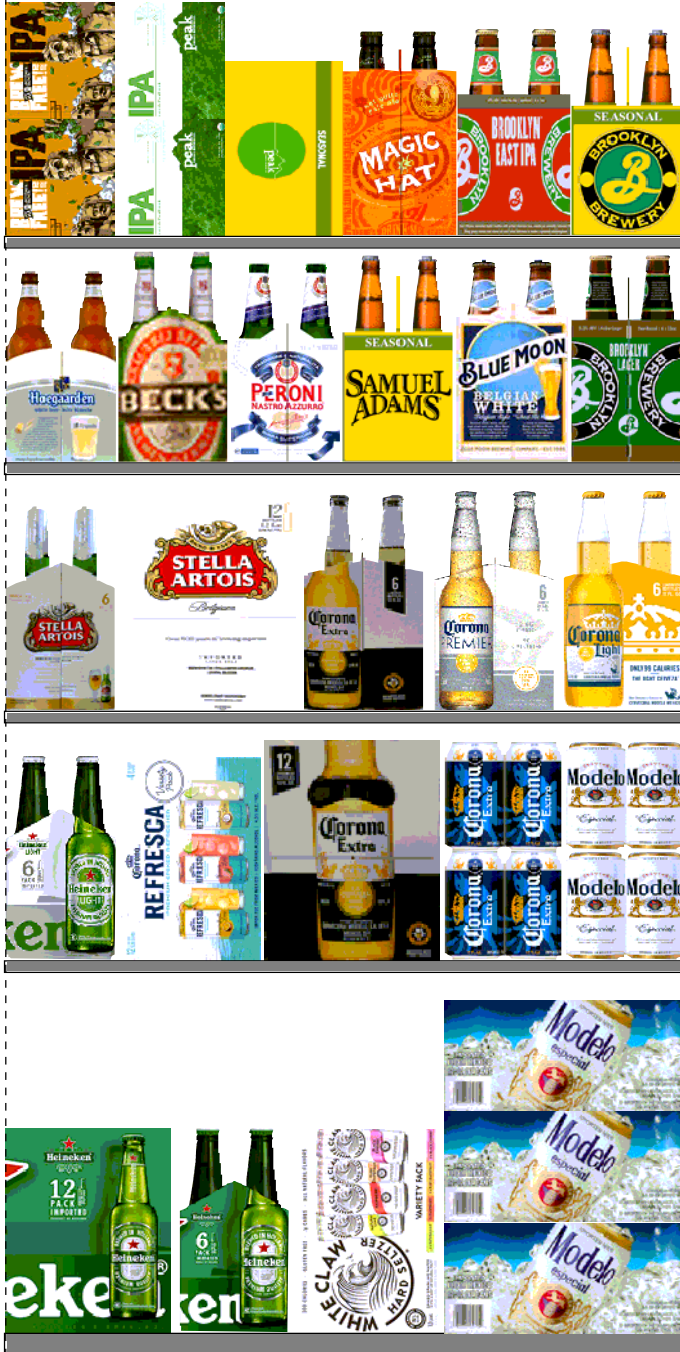
CVS # 2435 COLD

Reset Timing 2019 SPRING

Address: 75 CHRISTOPHER ST | City: NEW YORK | State: NY

**REVERSE VIEW (ONLY IF NEEDED)**

Segment:  
2 of 2



**Segment # 2 : 2\_5 0.00 In**

| POS | UPC         | NAME                               |
|-----|-------------|------------------------------------|
| 1   | 8066095715  | MODELO ESPECIAL 12/ 12 CAN         |
| 2   | 63598554890 | WHITE CLAW VARIETY PACK 12/ 12 CAN |
| 3   | 7289000011  | HEINEKEN 6/ 12 BTL                 |
| 4   | 7289000016  | HEINEKEN 12/ 12 BTL                |

**Segment # 2 : 2\_3 - 1 17.00 In**

| POS | UPC        | NAME                               |
|-----|------------|------------------------------------|
| 1   | 8066095755 | MODELO ESPECIAL 6/ 12 CAN          |
| 2   | 8066095685 | CORONA 6/ 12 CAN                   |
| 3   | 8066095615 | CORONA 12/ 12 BTL                  |
| 4   | 3354400013 | CORONA REFRESCA VARIETY 12/ 12 CAN |
| 5   | 7289000158 | HEINEKEN LIGHT 6/ 12 BTL           |

**Segment # 2 : 2\_3 28.00 In**

| POS | UPC         | NAME                       |
|-----|-------------|----------------------------|
| 1   | 8066095625  | CORONA LIGHT 6/ 12 BTL     |
| 2   | 3354495041  | CORONA PREMIER 6/ 12 BTL   |
| 3   | 8066095605  | CORONA 6/ 12 BTL           |
| 4   | 78615000014 | STELLA ARTOIS 12/ 11.2 BTL |
| 5   | 78615000001 | STELLA ARTOIS 6/ 11.2 BTL  |

**Segment # 2 : 2\_2 39.00 In**

| POS | UPC         | NAME                                |
|-----|-------------|-------------------------------------|
| 1   | 3061300001  | BROOKLYN LAGER 6/ 12 BTL            |
| 2   | 7199009511  | BLUE MOON BELGIAN WHITE 6/ 12 BTL   |
| 3   | 8769230050  | SAMUEL ADAMS SEASONAL 6/ 12 BTL (A) |
| 4   | 18195400002 | PERONI 6/ 11.2 BTL                  |
| 5   | 8248812345  | BECKS 6/ 12 BTL                     |
| 6   | 78615000036 | HOEGAARDEN WHITE 6/ 11.2 BTL        |

**Segment # 2 : 2\_1 49.00 In**

| POS | UPC         | NAME                                      |
|-----|-------------|---|
| 1   | 3061300053  | BROOKLYN SEASONAL 6/ 12 BTL               |
| 2   | 3061300019  | BROOKLYN EAST IPA 6/ 12 BTL               |
| 3   | 79837312602 | MAGIC HAT 9 NOT QUITE PALE ALE 6/ 12 BTL  |
| 4   | 78036950906 | PEAK ORGANIC SEASONAL 6/ 12 CAN           |
| 5   | 78036960806 | PEAK ORGANIC IPA 6/ 12 CAN                |
| 6   | 85961200103 | 21ST AMENDMENT BREW FREE OR DIE 6/ 12 CAN |



CVS # 2435 COLD

Address: 75 CHRISTOPHER ST | City: NEW YORK | State: NY

Chain/StoreNumer: CVS - EAST 2435

Reset Name: 2019 SPRING

Planogram Name: 2435\_2\_DOOR\_COLD

CVS PHARMA... Store # 2435 H: 5 ft W: 5 ft D: 2 ft # of segments: 2

Name: 1\_1 - 1 W:30.00 in D:24.00 in Avail Space: 0.03 in Ht Space: 10.50 in

| ID    | UPC         | Barcode | Name                            | Category      | HFacings | Orientation | Units |
|-------|-------------|---------|---------------------------------|---------------|----------|-------------|-------|
| 16265 | 8200072385  |         | SMIRNOFF ICE ORIGINAL 6/11.2... | ABOVE PREMIUM | 1        | Side        | 3     |
| 22090 | 8769282102  |         | ANGRY ORCHARD CRISP APP...      | ABOVE PREMIUM | 1        | Side        | 3     |
| 1345  | 1820013986  |         | SHOCK TOP BELGIAN WHITE 6...    | ABOVE PREMIUM | 1        | Side        | 3     |
| 22632 | 88715100094 |         | CONEY ISLAND MERMAID PILS...    | ABOVE PREMIUM | 1        | Side        | 3     |
| 11951 | 73692011132 |         | GOOSE ISLAND IPA 6/12 BTL       | ABOVE PREMIUM | 1        | Side        | 3     |
| 13009 | 75452700022 |         | NEW BELGIUM FAT TIRE 6/12 B...  | ABOVE PREMIUM | 1        | Side        | 3     |

Name: 2\_2 - 1 W:30.00 in D:24.00 in Avail Space: 2.58 in Ht Space: 9.50 in

| ID    | UPC         | Barcode | Name                           | Category      | HFacings | Orientation | Units |
|-------|-------------|---------|--------------------------------|---------------|----------|-------------|-------|
| 86788 | 3410051681  |         | CAPE LINE VARIETY PACK 12/1... | ABOVE PREMIUM | 1        | Front 90    | 3     |
| 17212 | 8378337521  |         | SIERRA NEVADA PALE ALE 6/1...  | ABOVE PREMIUM | 1        | Side        | 2     |
| 17201 | 8378322822  |         | SIERRA NEVADA SEASONAL 6...    | ABOVE PREMIUM | 1        | Side        | 2     |
| 15955 | 81760601000 |         | CAPTAIN LAWRENCE FRESHC...     | ABOVE PREMIUM | 1        | Side        | 3     |
| 15961 | 81760601020 |         | CAPTAIN LAWRENCE IPA 6/12 ...  | ABOVE PREMIUM | 1        | Side        | 3     |

Name: 1\_3 - 1 W:30.00 in D:24.00 in Avail Space: 1.78 in Ht Space: 9.50 in

| ID    | UPC        | Barcode | Name                     | Category | HFacings | Orientation | Units |
|-------|------------|---------|--------------------------|----------|----------|-------------|-------|
| 1083  | 1820000833 |         | BUD LIGHT 6/12 BTL       | PREMIUM  | 1        | Front       | 4     |
| 1084  | 1820000834 |         | BUD 6/12 BTL             | PREMIUM  | 1        | Side        | 3     |
| 23900 | 8992427891 |         | YUENGLING LAGER 6/12 BTL | PREMIUM  | 1        | Side        | 3     |



CVS # 2435 COLD

Address: 75 CHRISTOPHER ST | City: NEW YORK | State: NY

Chain/StoreNumer: CVS - EAST 2435

Reset Name: 2019 SPRING

Planogram Name: 2435\_2\_DOOR\_COLD

|       |             |                 |                        |               |   |      |   |
|-------|-------------|-----------------|------------------------|---------------|---|------|---|
| 10845 | 72383000009 | 7 23830 00009 4 | LAGUNITAS IPA 6/12 BTL | ABOVE PREMIUM | 1 | Side | 3 |
| 15383 | 8066095301  | 0 80660 95301 4 | PACIFICO 6/12 BTL      | ABOVE PREMIUM | 1 | Side | 3 |

Name: 1\_3 - 2 W:30.00 in D:24.00 in Avail Space: 0.46 in Ht Space: 11.50 in

| ID    | UPC        | Barcode         | Name                   | Category | HFacings | Orientation | Units |
|-------|------------|-----------------|------------------------|----------|----------|-------------|-------|
| 9886  | 7143934450 | 0 71439 34450 8 | ROLLING ROCK 12/12 CAN | ECONOMY  | 1        | Top 90      | 3     |
| 2241  | 2210000170 | 0 22100 00170 1 | PABST 12/12 CAN        | ECONOMY  | 1        | Top 90      | 3     |
| 10322 | 7199030005 | 0 71990 30005 0 | COORS LIGHT 6/12 BTL   | PREMIUM  | 1        | Side        | 3     |
| 3579  | 3410057636 | 0 34100 57636 3 | LITE 12/12 CAN         | PREMIUM  | 1        | Top 90      | 3     |
| 1297  | 1820011047 | 0 18200 11047 4 | BUD 12/12 CAN          | PREMIUM  | 1        | Top 90      | 3     |
| 1659  | 1820053047 | 0 18200 53047 0 | BUD LIGHT 12/12 CAN    | PREMIUM  | 1        | Top 90      | 3     |

Name: 1\_4 - 1 W:30.00 in D:24.00 in Avail Space: 2.34 in Ht Space: 16.00 in

| ID    | UPC        | Barcode         | Name                  | Category | HFacings | Orientation | Units |
|-------|------------|-----------------|-----------------------|----------|----------|-------------|-------|
| 3552  | 3410057340 | 0 34100 57340 9 | LITE 18/12 CAN        | PREMIUM  | 1        | Top 90      | 3     |
| 10329 | 7199030017 | 0 71990 30017 3 | COORS LIGHT 18/12 CAN | PREMIUM  | 1        | Side 90     | 3     |
| 10164 | 7199000048 | 0 71990 00048 6 | COORS LIGHT 12/12 CAN | PREMIUM  | 1        | Side        | 4     |
| 1307  | 1820011218 | 0 18200 11218 8 | BUD 18/12 CAN         | PREMIUM  | 1        | Top 90      | 3     |
| 1667  | 1820053218 | 0 18200 53218 4 | BUD LIGHT 18/12 CAN   | PREMIUM  | 1        | Top 90      | 3     |

Name: 2\_1 W:30.00 in D:24.00 in Avail Space: 0.02 in Ht Space: 10.50 in

| ID   | UPC        | Barcode         | Name                       | Category      | HFacings | Orientation | Units |
|------|------------|-----------------|----------------------------|---------------|----------|-------------|-------|
| 2638 | 3061300053 | 0 30613 00053 1 | BROOKLYN SEASONAL 6/12 BTL | ABOVE PREMIUM | 1        | Side        | 3     |
| 2625 | 3061300019 | 0 30613 00019 7 | BROOKLYN EAST IPA 6/12 BTL | ABOVE PREMIUM | 1        | Side        | 3     |





CVS # 2435 COLD

Address: 75 CHRISTOPHER ST | City: NEW YORK | State: NY

Chain/StoreNumer: CVS - EAST 2435

Reset Name: 2019 SPRING

Planogram Name: 2435\_2\_DOOR\_COLD

|       |             |   |  |   |                               |               |   |         |   |
|-------|-------------|---|--|---|-------------------------------|---------------|---|---------|---|
| 15034 | 79837312602 | 7 |  | 0 | MAGIC HAT 9 NOT QUITE PALE... | ABOVE PREMIUM | 1 | Side    | 3 |
| 13762 | 78036950906 | 7 |  | 1 | PEAK ORGANIC SEASONAL 6/1...  | ABOVE PREMIUM | 1 | Top 90  | 4 |
| 63311 | 78036960806 | 7 |  | 1 | PEAK ORGANIC IPA 6/12 CAN     | ABOVE PREMIUM | 1 | Side 90 | 6 |
| 21241 | 85961200103 | 8 |  | 1 | 21ST AMENDMENT BREW FRE...    | ABOVE PREMIUM | 1 | Side 90 | 6 |

Name: 2\_2 W:30.00 in D:24.00 in Avail Space: 0.43 in Ht Space: 9.50 in

| ID    | UPC         | Barcode | Name                         | Category      | HFacings | Orientation | Units |
|-------|-------------|---------|------------------------------|---------------|----------|-------------|-------|
| 2616  | 3061300001  |         | BROOKLYN LAGER 6/12 BTL      | ABOVE PREMIUM | 1        | Side        | 3     |
| 10180 | 7199009511  |         | BLUE MOON BELGIAN WHITE 6... | ABOVE PREMIUM | 1        | Side        | 3     |
| 21995 | 8769230050  |         | SAMUEL ADAMS SEASONAL 6/...  | ABOVE PREMIUM | 1        | Side        | 3     |
| 568   | 18195400002 |         | PERONI 6/11.2 BTL            | ABOVE PREMIUM | 1        | Side        | 3     |
| 16693 | 8248812345  |         | BECKS 6/12 BTL               | ABOVE PREMIUM | 1        | Side        | 3     |
| 14100 | 78615000036 |         | HOEGAARDEN WHITE 6/11.2 B... | ABOVE PREMIUM | 1        | Side        | 3     |

Name: 2\_3 W:30.00 in D:24.00 in Avail Space: 1.74 in Ht Space: 10.50 in

| ID    | UPC         | Barcode | Name                      | Category      | HFacings | Orientation | Units |
|-------|-------------|---------|---------------------------|---------------|----------|-------------|-------|
| 15408 | 8066095625  |         | CORONA LIGHT 6/12 BTL     | ABOVE PREMIUM | 1        | Side        | 3     |
| 44964 | 3354495041  |         | CORONA PREMIER 6/12 BTL   | ABOVE PREMIUM | 1        | Side        | 3     |
| 15400 | 8066095605  |         | CORONA 6/12 BTL           | ABOVE PREMIUM | 1        | Side        | 3     |
| 14094 | 78615000014 |         | STELLA ARTOIS 12/11.2 BTL | ABOVE PREMIUM | 1        | Side        | 2     |
| 14089 | 78615000001 |         | STELLA ARTOIS 6/11.2 BTL  | ABOVE PREMIUM | 1        | Side        | 3     |

Name: 2\_3 - 1 W:30.00 in D:24.00 in Avail Space: 0.76 in Ht Space: 10.50 in

| ID | UPC | Barcode | Name | Category | HFacings | Orientation | Units |
|----|-----|---------|------|----------|----------|-------------|-------|
|----|-----|---------|------|----------|----------|-------------|-------|



CVS # 2435 COLD

Address: 75 CHRISTOPHER ST | City: NEW YORK | State: NY

Chain/StoreNumer: CVS - EAST 2435

Reset Name: 2019 SPRING

Planogram Name: 2435\_2\_DOOR\_COLD

|       |            |  |                            |               |   |          |   |
|-------|------------|--|----------------------------|---------------|---|----------|---|
| 15435 | 8066095755 |  | MODELO ESPECIAL 6/12 CAN   | ABOVE PREMIUM | 1 | Side     | 6 |
| 15421 | 8066095685 |  | CORONA 6/12 CAN            | ABOVE PREMIUM | 1 | Side     | 6 |
| 15403 | 8066095615 |  | CORONA 12/12 BTL           | ABOVE PREMIUM | 1 | Side     | 2 |
| 86777 | 3354400013 |  | CORONA REFRESCA VARIETY... | ABOVE PREMIUM | 1 | Front 90 | 3 |
| 11341 | 7289000158 |  | HEINEKEN LIGHT 6/12 BTL    | ABOVE PREMIUM | 1 | Side     | 3 |

Name: 2\_5      W:30.00 in      D:24.00 in      Avail Space: 1.05 in      Ht Space: 16.00 in

| ID    | UPC         | Barcode | Name                         | Category      | HFacings | Orientation | Units |
|-------|-------------|---------|------------------------------|---------------|----------|-------------|-------|
| 15429 | 8066095715  |         | MODELO ESPECIAL 12/12 CAN    | ABOVE PREMIUM | 1        | Top         | 9     |
| 45151 | 63598554890 |         | WHITE CLAW VARIETY PACK 1... | ABOVE PREMIUM | 1        | Front 90    | 4     |
| 11298 | 7289000011  |         | HEINEKEN 6/12 BTL            | ABOVE PREMIUM | 1        | Side        | 3     |
| 11300 | 7289000016  |         | HEINEKEN 12/12 BTL           | ABOVE PREMIUM | 1        | Side        | 2     |