





CVS # 2718 COLD

Address: 170 25 HILLSIDE AVE | City: JAMAICA | State: NY

Chain/StoreNumer: CVS - EAST 2718

Reset Name: 2019 SPRING

Planogram Name: 2718_3_DOOR_COLD

Segment # 1 : 1_5 DEPTH: 23 in WIDTH: 30 in DISTANCE FROM TOP OF BASE SHELF TO BOTTOM OF SHELF:0.00 in

POS	# FAC	UPC	NAME	CASES	CAPACITY	UNITS HIGH	Category
1	1	3410057340	LITE 18/12 CAN	2.0	2	1	PREMIUM
2	1	7199030017	COORS LIGHT 18/12 CAN	3.0	3	1	PREMIUM
3	1	1820011218	BUD 18/12 CAN	3.0	3	1	PREMIUM
4	1	1820053218	BUD LIGHT 18/12 CAN	3.0	3	1	PREMIUM

Segment # 1 : 1_4 DEPTH: 23 in WIDTH: 30 in DISTANCE FROM TOP OF BASE SHELF TO BOTTOM OF SHELF:18.00 in

POS	# FAC	UPC	NAME	CASES	CAPACITY	UNITS HIGH	Category
1	1	3410057636	LITE 12/12 CAN	1.0	2	1	PREMIUM
2	2	7199000048	COORS LIGHT 12/12 CAN	3.0	6	2	PREMIUM
3	1	1820011047	BUD 12/12 CAN	1.0	2	1	PREMIUM
4	1	1820053047	BUD LIGHT 12/12 CAN	1.0	2	1	PREMIUM

Segment # 1 : 1_3 DEPTH: 23 in WIDTH: 30 in DISTANCE FROM TOP OF BASE SHELF TO BOTTOM OF SHELF:30.00 in

POS	# FAC	UPC	NAME	CASES	CAPACITY	UNITS HIGH	Category
1	1	7143934450	ROLLING ROCK 12/12 CAN	1.0	2	1	ECONOMY
2	1	7199030069	COORS LIGHT 12/12 BTL	1.0	2	1	PREMIUM
3	1	1820000771	BUD 12/12 BTL	1.0	2	1	PREMIUM
4	1	1820000769	BUD LIGHT 12/12 BTL	1.0	2	1	PREMIUM

Segment # 1 : 1_2 DEPTH: 23 in WIDTH: 30 in DISTANCE FROM TOP OF BASE SHELF TO BOTTOM OF SHELF:41.00 in

POS	# FAC	UPC	NAME	CASES	CAPACITY	UNITS HIGH	Category
1	1	2210000170	PABST 12/12 CAN	1.0	2	1	ECONOMY
2	1	3410001509	HIGH LIFE 12/12 BTL	1.0	2	1	ECONOMY
3	1	7199030005	COORS LIGHT 6/12 BTL	0.8	3	1	PREMIUM
4	1	1820000833	BUD LIGHT 6/12 BTL	0.8	3	1	PREMIUM
5	1	1820020079	BUD LIGHT ORANGE 6/12 BTL	0.8	3	1	ABOVE PREMIUM

Segment # 1 : 1_1 DEPTH: 23 in WIDTH: 30 in DISTANCE FROM TOP OF BASE SHELF TO BOTTOM OF SHELF:52.00 in

POS	# FAC	UPC	NAME	CASES	CAPACITY	UNITS HIGH	Category
1	1	7199030065	COORS LIGHT 1/24 CAN	0.7	8	1	PREMIUM
2	1	7199010071	COORS BANQUET 1/24 CAN	0.7	8	1	PREMIUM
3	1	1820025000	BUD 1/25 CAN	0.5	8	1	PREMIUM
4	1	1820025001	BUD LIGHT 1/25 CAN	0.5	8	1	PREMIUM
5	1	8066095721	MODELO ESPECIAL 1/24 CAN	0.6	7	1	ABOVE PREMIUM
6	1	8066095643	CORONA 1/24 CAN	0.7	8	1	ABOVE PREMIUM
7	1	7289000119	HEINEKEN 1/24 CAN	0.6	7	1	ABOVE PREMIUM
8	1	61300874829	ARNOLD PALMER SPIKED HALF AND HALF 1/24 CAN	0.7	8	1	ABOVE PREMIUM
9	1	7089701331	FOSTERS 1/25.4 CAN	0.5	6	1	ABOVE PREMIUM

Segment # 2 : 2_5 DEPTH: 23 in WIDTH: 30 in DISTANCE FROM TOP OF BASE SHELF TO BOTTOM OF SHELF:0.00 in

POS	# FAC	UPC	NAME	CASES	CAPACITY	UNITS HIGH	Category
1	1	8066095757	MODELO ESPECIAL 12/12 BTL	1.0	2	1	ABOVE PREMIUM
2	1	8066095675	CORONA LIGHT 12/12 BTL	2.0	4	1	ABOVE PREMIUM
3	1	8066095615	CORONA 12/12 BTL	2.0	4	1	ABOVE PREMIUM

Segment # 2 : 2_4 DEPTH: 23 in WIDTH: 30 in DISTANCE FROM TOP OF BASE SHELF TO BOTTOM OF SHELF:18.00 in

POS	# FAC	UPC	NAME	CASES	CAPACITY	UNITS HIGH	Category
1	1	1820005990	MICHELOB ULTRA 12/12 BTL	1.0	2	1	ABOVE PREMIUM
2	1	8066095715	MODELO ESPECIAL 12/12 CAN	2.0	4	1	ABOVE PREMIUM
3	1	3354495042	CORONA PREMIER 12/12 BTL	1.0	2	1	ABOVE PREMIUM
4	1	8066095625	CORONA LIGHT 6/12 BTL	0.5	2	1	ABOVE PREMIUM

Segment # 2 : 2_3 DEPTH: 23 in WIDTH: 30 in DISTANCE FROM TOP OF BASE SHELF TO BOTTOM OF SHELF:30.00 in

POS	# FAC	UPC	NAME	CASES	CAPACITY	UNITS HIGH	Category
1	1	1820020083	MICHELOB ULTRA PURE GOLD 12/12 BTL	1.0	2	1	ABOVE PREMIUM
2	1	8066095301	PACIFICO 6/12 BTL	0.5	2	1	ABOVE PREMIUM
3	1	8066095765	MODELO ESPECIAL 6/12 BTL	0.5	2	1	ABOVE PREMIUM



CVS # 2718 COLD

Address: 170 25 HILLSIDE AVE | City: JAMAICA | State: NY

Chain/StoreNumer: CVS - EAST 2718

Reset Name: 2019 SPRING

Planogram Name: 2718_3_DOOR_COLD

4	1	8066095695	CORONA 12/12 CAN	1.0	2	1	ABOVE PREMIUM
5	1	8066095605	CORONA 6/12 BTL	0.5	2	1	ABOVE PREMIUM

Segment # 2 : 2_2 DEPTH: 23 in WIDTH: 30 in DISTANCE FROM TOP OF BASE SHELF TO BOTTOM OF SHELF:41.00 in

POS	# FAC	UPC	NAME	CASES	CAPACITY	UNITS HIGH	Category
1	1	8769200660	ANGRY ORCHARD ROSE 6/12 BTL	0.8	3	1	ABOVE PREMIUM
2	1	8769282102	ANGRY ORCHARD CRISP APPLE 6/12 BTL	1.0	4	1	ABOVE PREMIUM
3	1	8066095755	MODELO ESPECIAL 6/12 CAN	1.0	4	1	ABOVE PREMIUM
4	1	8382012393	GUINNESS EXTRA STOUT 6/12 BTL	0.8	3	1	ABOVE PREMIUM
5	1	18195400002	PERONI 6/11.2 BTL	0.8	3	1	ABOVE PREMIUM

Segment # 2 : 2_1 DEPTH: 23 in WIDTH: 30 in DISTANCE FROM TOP OF BASE SHELF TO BOTTOM OF SHELF:52.00 in

POS	# FAC	UPC	NAME	CASES	CAPACITY	UNITS HIGH	Category
1	1	3410051681	CAPE LINE VARIETY PACK 12/12 CAN	1.5	3	1	ABOVE PREMIUM
2	1	3354400013	CORONA REFRESCA VARIETY 12/12 CAN	1.5	3	1	ABOVE PREMIUM
3	1	63598554890	WHITE CLAW VARIETY PACK 12/12 CAN	1.5	3	1	ABOVE PREMIUM
4	1	85389700227	BON AND VIV SPIKED SELTZER VARIETY 12/12 CAN	1.5	3	1	ABOVE PREMIUM

Segment # 3 : 3_5 DEPTH: 23 in WIDTH: 30 in DISTANCE FROM TOP OF BASE SHELF TO BOTTOM OF SHELF:0.00 in

POS	# FAC	UPC	NAME	CASES	CAPACITY	UNITS HIGH	Category
1	1	8248812300	BECKS 12/12 BTL	1.0	2	1	ABOVE PREMIUM
2	1	7289000020	HEINEKEN 12/12 CAN	3.0	6	1	ABOVE PREMIUM
3	1	64286090024	FOUNDERS ALL DAY SESSION IPA 15/12 CAN	1.5	3	1	ABOVE PREMIUM
4	1	85909300243	SIXPOINT BENGALI IPA 6/12 CAN	2.0	8	1	ABOVE PREMIUM

Segment # 3 : 3_4 DEPTH: 23 in WIDTH: 30 in DISTANCE FROM TOP OF BASE SHELF TO BOTTOM OF SHELF:18.00 in

POS	# FAC	UPC	NAME	CASES	CAPACITY	UNITS HIGH	Category
1	1	7289000011	HEINEKEN 6/12 BTL	0.8	3	1	ABOVE PREMIUM
2	1	7289000016	HEINEKEN 12/12 BTL	1.5	3	1	ABOVE PREMIUM
3	1	7289000159	HEINEKEN LIGHT 12/12 BTL	1.0	2	1	ABOVE PREMIUM
4	1	8378337521	SIERRA NEVADA PALE ALE 6/12 BTL	0.5	2	1	ABOVE PREMIUM

Segment # 3 : 3_3 DEPTH: 23 in WIDTH: 30 in DISTANCE FROM TOP OF BASE SHELF TO BOTTOM OF SHELF:30.00 in

POS	# FAC	UPC	NAME	CASES	CAPACITY	UNITS HIGH	Category
1	1	1820013986	SHOCK TOP BELGIAN WHITE 6/12 BTL	0.5	2	1	ABOVE PREMIUM
2	1	8769200127	SAMUEL ADAMS REBEL IPA 6/12 BTL	0.8	3	1	ABOVE PREMIUM
3	1	73692011132	GOOSE ISLAND IPA 6/12 BTL	0.8	3	1	ABOVE PREMIUM
4	1	72383000009	LAGUNITAS IPA 6/12 BTL	1.0	4	1	ABOVE PREMIUM
5	1	72383000020	LAGUNITAS LITTLE SUMPIN 6/12 BTL	0.5	2	1	ABOVE PREMIUM

Segment # 3 : 3_2 DEPTH: 23 in WIDTH: 30 in DISTANCE FROM TOP OF BASE SHELF TO BOTTOM OF SHELF:41.00 in

POS	# FAC	UPC	NAME	CASES	CAPACITY	UNITS HIGH	Category
1	1	78615000001	STELLA ARTOIS 6/11.2 BTL	0.8	3	1	ABOVE PREMIUM
2	1	78615000014	STELLA ARTOIS 12/11.2 BTL	1.0	2	1	ABOVE PREMIUM
3	1	78615000030	LEFFE BLONDE 6/11.2 BTL	0.8	3	1	ABOVE PREMIUM
4	1	7199009532	BLUE MOON SEASONAL 6/12 BTL	0.8	3	1	ABOVE PREMIUM
5	1	7199009511	BLUE MOON BELGIAN WHITE 6/12 BTL	0.8	3	1	ABOVE PREMIUM

Segment # 3 : 3_1 DEPTH: 23 in WIDTH: 30 in DISTANCE FROM TOP OF BASE SHELF TO BOTTOM OF SHELF:52.00 in

POS	# FAC	UPC	NAME	CASES	CAPACITY	UNITS HIGH	Category
1	1	78615000036	HOEGAARDEN WHITE 6/11.2 BTL	0.8	3	1	ABOVE PREMIUM
2	1	75452700022	NEW BELGIUM FAT TIRE 6/12 BTL	0.8	3	1	ABOVE PREMIUM
3	1	3061300019	BROOKLYN EAST IPA 6/12 BTL	0.5	2	1	ABOVE PREMIUM
4	1	3061300001	BROOKLYN LAGER 6/12 BTL	1.0	4	1	ABOVE PREMIUM
5	1	3061300053	BROOKLYN SEASONAL 6/12 BTL	0.5	2	1	ABOVE PREMIUM

REVERSE VIEW (ONLY IF NEEDED)





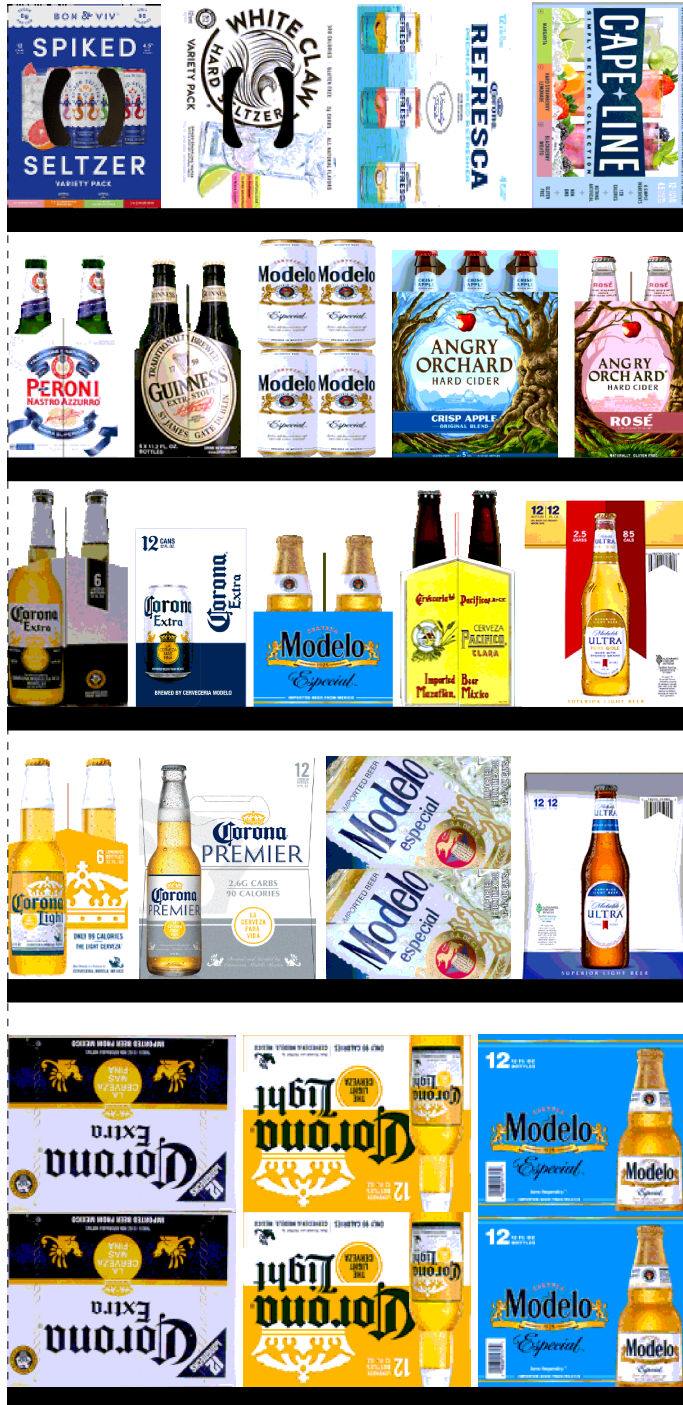
CVS # 2718 COLD

Reset Timing 2019 SPRING

Address: 170 25 HILLSIDE AVE | City: JAMAICA | State: NY

REVERSE VIEW (ONLY IF NEEDED)

Segment:
2 of 3



Segment # 2 : 2_5 0.00 in

POS	UPC	NAME
1	8066095757	MODELO ESPECIAL 12/12 BTL
2	8066095675	CORONA LIGHT 12/12 BTL
3	8066095615	CORONA 12/12 BTL

Segment # 2 : 2_4 18.00 in

POS	UPC	NAME
1	1820005990	MICHELOB ULTRA 12/12 BTL
2	8066095715	MODELO ESPECIAL 12/12 CAN
3	3354495042	CORONA PREMIER 12/12 BTL
4	8066095625	CORONA LIGHT 6/12 BTL

Segment # 2 : 2_3 30.00 in

POS	UPC	NAME
1	1820020083	MICHELOB ULTRA PURE GOLD 12/12 BTL
2	8066095301	PACIFICO 6/12 BTL
3	8066095765	MODELO ESPECIAL 6/12 BTL
4	8066095695	CORONA 12/12 CAN
5	8066095605	CORONA 6/12 BTL

Segment # 2 : 2_2 41.00 in

POS	UPC	NAME
1	8769200660	ANGRY ORCHARD ROSE 6/12 BTL
2	8769282102	ANGRY ORCHARD CRISP APPLE 6/12 BTL
3	8066095755	MODELO ESPECIAL 6/12 CAN
4	8382012393	GUINNESS EXTRA STOUT 6/12 BTL
5	18195400002	PERONI 6/11.2 BTL

Segment # 2 : 2_1 52.00 in

POS	UPC	NAME
1	3410051681	CAPE LINE VARIETY PACK 12/12 CAN
2	3354400013	CORONA REFRESCA VARIETY 12/12 CAN
3	63598554890	WHITE CLAW VARIETY PACK 12/12 CAN
4	85389700227	BON AND VIV SPIKED SELTZER VARIETY 12/12 CAN



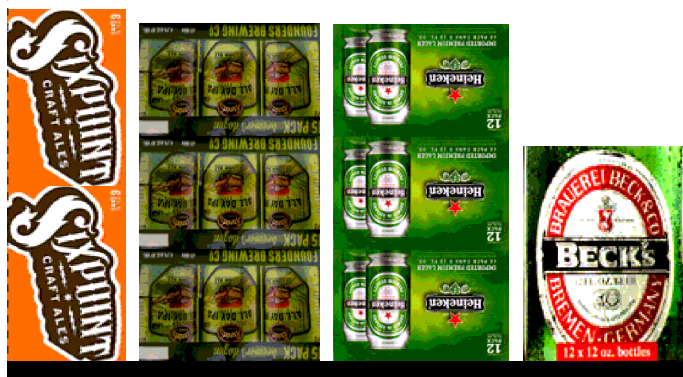
CVS # 2718 COLD

Reset Timing 2019 SPRING

Address: 170 25 HILLSIDE AVE | City: JAMAICA | State: NY

REVERSE VIEW (ONLY IF NEEDED)

Segment:
3 of 3



Segment # 3 : 3_5 0.00 in

POS	UPC	NAME
1	8248812300	BECKS 12/12 BTL
2	7289000020	HEINEKEN 12/12 CAN
3	64286090024	FOUNDERS ALL DAY SESSION IPA 15/12 CAN
4	85909300243	SIXPOINT BENGALI IPA 6/12 CAN

Segment # 3 : 3_4 18.00 in

POS	UPC	NAME
1	7289000011	HEINEKEN 6/12 BTL
2	7289000016	HEINEKEN 12/12 BTL
3	7289000159	HEINEKEN LIGHT 12/12 BTL
4	8378337521	SIERRA NEVADA PALE ALE 6/12 BTL

Segment # 3 : 3_3 30.00 in

POS	UPC	NAME
1	1820013986	SHOCK TOP BELGIAN WHITE 6/12 BTL
2	8769200127	SAMUEL ADAMS REBEL IPA 6/12 BTL
3	73692011132	GOOSE ISLAND IPA 6/12 BTL
4	72383000009	LAGUNITAS IPA 6/12 BTL
5	72383000020	LAGUNITAS LITTLE SUMPIN 6/12 BTL

Segment # 3 : 3_2 41.00 in

POS	UPC	NAME
1	78615000001	STELLA ARTOIS 6/11.2 BTL
2	78615000014	STELLA ARTOIS 12/11.2 BTL
3	78615000030	LEFFE BLONDE 6/11.2 BTL
4	7199009532	BLUE MOON SEASONAL 6/12 BTL
5	7199009511	BLUE MOON BELGIAN WHITE 6/12 BTL

Segment # 3 : 3_1 52.00 in

POS	UPC	NAME
1	78615000036	HOEGAARDEN WHITE 6/11.2 BTL
2	75452700022	NEW BELGIUM FAT TIRE 6/12 BTL
3	3061300019	BROOKLYN EAST IPA 6/12 BTL
4	3061300001	BROOKLYN LAGER 6/12 BTL
5	3061300053	BROOKLYN SEASONAL 6/12 BTL



CVS # 2718 COLD

Address: 170 25 HILLSIDE AVE | City: JAMAICA | State: NY

Chain/StoreNumer: CVS - EAST 2718

Reset Name: 2019 SPRING

Planogram Name: 2718_3_DOOR_COLD

CVS PHARMA... Store # 2718 H: 5 ft 2.00 in W: 7 ft 6.00 in D: 1 ft 10.00 in # of segments: 3

Name: 1_1		W:30.00 in	D:23.00 in	Avail Space: 3.67 in		Ht Space: 9.00 in			
ID	UPC	Barcode		Name	Category	HFacings	Orientation	Units	
10346	7199030065	71990 30065 4		COORS LIGHT 1/24 CAN	PREMIUM	1	Front	8	
10243	7199010071	71990 10071 1		COORS BANQUET 1/24 CAN	PREMIUM	1	Front	8	
1520	1820025000	18200 25000 2		BUD 1/25 CAN	PREMIUM	1	Front	8	
1521	1820025001	18200 25001 9		BUD LIGHT 1/25 CAN	PREMIUM	1	Front	8	
15431	8066095721	80660 95721 0		MODELO ESPECIAL 1/24 CAN	ABOVE PREMIUM	1	Front	7	
15415	8066095643	80660 95643 5		CORONA 1/24 CAN	ABOVE PREMIUM	1	Front	8	
11327	7289000119	72890 00119 1		HEINEKEN 1/24 CAN	ABOVE PREMIUM	1	Front	7	
66064	61300874829	13008 74829 6		ARNOLD PALMER SPIKED HALF ...	ABOVE PREMIUM	1	Side	8	
9452	7089701331	70897 01331 5		FOSTERS 1/25.4 CAN	ABOVE PREMIUM	1	Front	6	

Name: 1_2		W:30.00 in	D:23.00 in	Avail Space: 2.64 in		Ht Space: 10.00 in			
ID	UPC	Barcode		Name	Category	HFacings	Orientation	Units	
2241	2210000170	22100 00170 1		PABST 12/12 CAN	ECONOMY	1	Side	2	
3198	3410001509	34100 01509 1		HIGH LIFE 12/12 BTL	ECONOMY	1	Side	2	
10322	7199030005	71990 30005 0		COORS LIGHT 6/12 BTL	PREMIUM	1	Side	3	
1083	1820000833	18200 00833 7		BUD LIGHT 6/12 BTL	PREMIUM	1	Side	3	
67176	1820020079	18200 20079 3		BUD LIGHT ORANGE 6/12 BTL	ABOVE PREMIUM	1	Side	3	

Name: 1_3		W:30.00 in	D:23.00 in	Avail Space: 2.98 in		Ht Space: 10.00 in			
ID	UPC	Barcode		Name	Category	HFacings	Orientation	Units	
9886	7143934450	71439 34450 8		ROLLING ROCK 12/12 CAN	ECONOMY	1	Side	2	
10348	7199030069	71990 30069 2		COORS LIGHT 12/12 BTL	PREMIUM	1	Side	2	
1058	1820000771	18200 00771 2		BUD 12/12 BTL	PREMIUM	1	Side	2	
1056	1820000769	18200 00769 9		BUD LIGHT 12/12 BTL	PREMIUM	1	Side	2	

Name: 1_4 W:30.00 in D:23.00 in Avail Space: 4.60 in Ht Space: 11.00 in



CVS # 2718 COLD

Address: 170 25 HILLSIDE AVE | City: JAMAICA | State: NY

Chain/StoreNumer: CVS - EAST 2718

Reset Name: 2019 SPRING

Planogram Name: 2718_3_DOOR_COLD

ID	UPC	Barcode	Name	Category	HFacings	Orientation	Units
3579	3410057636	0 34100 57636 3	LITE 12/12 CAN	PREMIUM	1	Top 90	2
10164	7199000048	0 71990 00048 6	COORS LIGHT 12/12 CAN	PREMIUM	2	Top 90	6
1297	1820011047	0 18200 11047 4	BUD 12/12 CAN	PREMIUM	1	Top 90	2
1659	1820053047	0 18200 53047 0	BUD LIGHT 12/12 CAN	PREMIUM	1	Top 90	2

Name: 1_5		W:30.00 in	D:23.00 in	Avail Space: 1.77 in	Ht Space: 17.00 in			
ID	UPC	Barcode	Name	Category	HFacings	Orientation	Units	
3552	3410057340	0 34100 57340 9	LITE 18/12 CAN	PREMIUM	1	Side	2	
10329	7199030017	0 71990 30017 3	COORS LIGHT 18/12 CAN	PREMIUM	1	Side 90	3	
1307	1820011218	0 18200 11218 8	BUD 18/12 CAN	PREMIUM	1	Side 90	3	
1667	1820053218	0 18200 53218 4	BUD LIGHT 18/12 CAN	PREMIUM	1	Side 90	3	

Name: 2_1		W:30.00 in	D:23.00 in	Avail Space: 2.92 in	Ht Space: 9.00 in			
ID	UPC	Barcode	Name	Category	HFacings	Orientation	Units	
86788	3410051681	0 34100 51681 9	CAPE LINE VARIETY PACK 12/12 ...	ABOVE PREMIUM	1	Top 90	3	
86777	3354400013	0 33544 00013 7	CORONA REFRESCA VARIETY 1...	ABOVE PREMIUM	1	Top 90	3	
45151	63598554890	6 35985 54890 4	WHITE CLAW VARIETY PACK 12/...	ABOVE PREMIUM	1	Top 90	3	
19178	85389700227	8 53897 00227 1	BON AND VIV SPIKED SELTZER ...	ABOVE PREMIUM	1	Top 90	3	

Name: 2_2		W:30.00 in	D:23.00 in	Avail Space: 2.92 in	Ht Space: 10.00 in			
ID	UPC	Barcode	Name	Category	HFacings	Orientation	Units	
65019	8769200660	0 87692 00660 2	ANGRY ORCHARD ROSE 6/12 BTL	ABOVE PREMIUM	1	Side	3	
22090	8769282102	0 87692 82102 1	ANGRY ORCHARD CRISP APPLE ...	ABOVE PREMIUM	1	Front	4	
15435	8066095755	0 80660 95755 5	MODELO ESPECIAL 6/12 CAN	ABOVE PREMIUM	1	Side	4	
17305	8382012393	0 83820 12393 7	GUINNESS EXTRA STOUT 6/12 BTL	ABOVE PREMIUM	1	Side	3	
568	18195400002	1 81954 00002 2	PERONI 6/11.2 BTL	ABOVE PREMIUM	1	Side	3	

Name: 2_3		W:30.00 in	D:23.00 in	Avail Space: 1.26 in	Ht Space: 10.00 in			
ID	UPC	Barcode	Name	Category	HFacings	Orientation	Units	
65828	1820020083	0 18200 20083 0	MICHELOB ULTRA PURE GOLD 1...	ABOVE PREMIUM	1	Side	2	



CVS # 2718 COLD

Address: 170 25 HILLSIDE AVE | City: JAMAICA | State: NY

Chain/StoreNumer: CVS - EAST 2718

Reset Name: 2019 SPRING

Planogram Name: 2718_3_DOOR_COLD

15383	8066095301	0 80660 95301 4	PACIFICO 6/12 BTL	ABOVE PREMIUM	1	Side	2
15442	8066095765	0 80660 95765 4	MODELO ESPECIAL 6/12 BTL	ABOVE PREMIUM	1	Side	2
15426	8066095695	0 80660 95695 4	CORONA 12/12 CAN	ABOVE PREMIUM	1	Side	2
15400	8066095605	0 80660 95605 3	CORONA 6/12 BTL	ABOVE PREMIUM	1	Side	2

Name: 2_4 W:30.00 in D:23.00 in Avail Space: 1.49 in Ht Space: 11.00 in

ID	UPC	Barcode	Name	Category	HFacings	Orientation	Units
1228	1820005990	0 18200 05990 2	MICHELOB ULTRA 12/12 BTL	ABOVE PREMIUM	1	Side	2
15429	8066095715	0 80660 95715 9	MODELO ESPECIAL 12/12 CAN	ABOVE PREMIUM	1	Side 90	4
44952	3354495042	0 33544 95042 5	CORONA PREMIER 12/12 BTL	ABOVE PREMIUM	1	Side	2
15408	8066095625	0 80660 95625 1	CORONA LIGHT 6/12 BTL	ABOVE PREMIUM	1	Side	2

Name: 2_5 W:30.00 in D:23.00 in Avail Space: 0.72 in Ht Space: 17.00 in

ID	UPC	Barcode	Name	Category	HFacings	Orientation	Units
15436	8066095757	0 80660 95757 9	MODELO ESPECIAL 12/12 BTL	ABOVE PREMIUM	1	Side	2
15416	8066095675	0 80660 95675 6	CORONA LIGHT 12/12 BTL	ABOVE PREMIUM	1	Top	4
15403	8066095615	0 80660 95615 2	CORONA 12/12 BTL	ABOVE PREMIUM	1	Top	4

Name: 3_1 W:30.00 in D:23.00 in Avail Space: 2.53 in Ht Space: 9.00 in

ID	UPC	Barcode	Name	Category	HFacings	Orientation	Units
14100	78615000036	7 86150 00036 6	HOEGAARDEN WHITE 6/11.2 BTL	ABOVE PREMIUM	1	Side	3
13009	75452700022	7 54527 00022 6	NEW BELGIUM FAT TIRE 6/12 BTL	ABOVE PREMIUM	1	Side	3
2625	3061300019	0 30613 00019 7	BROOKLYN EAST IPA 6/12 BTL	ABOVE PREMIUM	1	Side	2
2616	3061300001	0 30613 00001 2	BROOKLYN LAGER 6/12 BTL	ABOVE PREMIUM	1	Front	4
2638	3061300053	0 30613 00053 1	BROOKLYN SEASONAL 6/12 BTL	ABOVE PREMIUM	1	Side	2

Name: 3_2 W:30.00 in D:23.00 in Avail Space: 2.83 in Ht Space: 10.00 in

ID	UPC	Barcode	Name	Category	HFacings	Orientation	Units
14089	78615000001	7 86150 00001 4	STELLA ARTOIS 6/11.2 BTL	ABOVE PREMIUM	1	Side	3
14094	78615000014	7 86150 00014 4	STELLA ARTOIS 12/11.2 BTL	ABOVE PREMIUM	1	Side	2



CVS # 2718 COLD

Address: 170 25 HILLSIDE AVE | City: JAMAICA | State: NY

Chain/StoreNumer: CVS - EAST 2718

Reset Name: 2019 SPRING

Planogram Name: 2718_3_DOOR_COLD

14098	78615000030	7 86150 00030 4	LEFFE BLONDE 6/11.2 BTL	ABOVE PREMIUM	1	Side	3
10190	7199009532	0 71990 09532 1	BLUE MOON SEASONAL 6/12 BTL	ABOVE PREMIUM	1	Side	3
10180	7199009511	0 71990 09511 6	BLUE MOON BELGIAN WHITE 6/1...	ABOVE PREMIUM	1	Side	3

Name: 3_3		W:30.00 in	D:23.00 in	Avail Space: 1.51 in	Ht Space: 10.00 in			
ID	UPC	Barcode		Name	Category	HFacings	Orientation	Units
1345	1820013986	0 18200 13986 4		SHOCK TOP BELGIAN WHITE 6/1...	ABOVE PREMIUM	1	Side	2
21860	8769200127	0 87692 00127 0		SAMUEL ADAMS REBEL IPA 6/12 ...	ABOVE PREMIUM	1	Side	3
11951	73692011132	7 36920 11132 7		GOOSE ISLAND IPA 6/12 BTL	ABOVE PREMIUM	1	Side	3
10845	72383000009	7 23830 00009 4		LAGUNITAS IPA 6/12 BTL	ABOVE PREMIUM	1	Front	4
10855	72383000020	7 23830 00020 9		LAGUNITAS LITTLE SUMPIN 6/12 ...	ABOVE PREMIUM	1	Side	2

Name: 3_4		W:30.00 in	D:23.00 in	Avail Space: 2.60 in	Ht Space: 11.00 in			
ID	UPC	Barcode		Name	Category	HFacings	Orientation	Units
11298	7289000011	0 72890 00011 8		HEINEKEN 6/12 BTL	ABOVE PREMIUM	1	Side	3
11300	7289000016	0 72890 00016 3		HEINEKEN 12/12 BTL	ABOVE PREMIUM	1	Front	3
11342	7289000159	0 72890 00159 7		HEINEKEN LIGHT 12/12 BTL	ABOVE PREMIUM	1	Side	2
17212	8378337521	0 83783 37521 3		SIERRA NEVADA PALE ALE 6/12 ...	ABOVE PREMIUM	1	Side	2

Name: 3_5		W:30.00 in	D:23.00 in	Avail Space: 1.88 in	Ht Space: 17.00 in			
ID	UPC	Barcode		Name	Category	HFacings	Orientation	Units
16691	8248812300	0 82488 12300 6		BECKS 12/12 BTL	ABOVE PREMIUM	1	Side	2
11301	7289000020	0 72890 00020 0		HEINEKEN 12/12 CAN	ABOVE PREMIUM	1	Side 90	6
7044	64286090024	6 42860 90024 5		FOUNDERS ALL DAY SESSION IP...	ABOVE PREMIUM	1	Side 90	3
21073	85909300243	8 59093 00243 5		SIXPOINT BENGALI IPA 6/12 CAN	ABOVE PREMIUM	1	Top 90	8