





CVS # 3138 COLD

Address: 206 09 LINDEN BLVD | City: CAMBRIA HEIGHTS | State: NY

Chain/StoreNumer: CVS - EAST 3138

Reset Name: 2019 SPRING

Planogram Name: 3138_2_DOOR_COLD

Segment # 1 : 1_4 DEPTH: 23 in WIDTH: 23 in DISTANCE FROM TOP OF BASE SHELF TO BOTTOM OF SHELF:0.00 in

POS #	FAC	UPC	NAME	CASES	CAPACITY	UNITS HIGH	Category
1	1	7199000048	COORS LIGHT 12/12 CAN	2.0	4	1	PREMIUM
2	1	7199030017	COORS LIGHT 18/12 CAN	3.0	3	1	PREMIUM
3	1	1820011218	BUD 18/12 CAN	2.0	2	1	PREMIUM
4	1	1820053218	BUD LIGHT 18/12 CAN	2.0	2	1	PREMIUM

Segment # 1 : 1_3 DEPTH: 23 in WIDTH: 23 in DISTANCE FROM TOP OF BASE SHELF TO BOTTOM OF SHELF:17.00 in

POS #	FAC	UPC	NAME	CASES	CAPACITY	UNITS HIGH	Category
1	1	7199030005	COORS LIGHT 6/12 BTL	0.8	3	1	PREMIUM
2	1	7199030069	COORS LIGHT 12/12 BTL	1.0	2	1	PREMIUM
3	1	1820011047	BUD 12/12 CAN	1.0	2	1	PREMIUM
4	1	1820053047	BUD LIGHT 12/12 CAN	1.0	2	1	PREMIUM

Segment # 1 : 1_2 DEPTH: 23 in WIDTH: 23 in DISTANCE FROM TOP OF BASE SHELF TO BOTTOM OF SHELF:29.00 in

POS #	FAC	UPC	NAME	CASES	CAPACITY	UNITS HIGH	Category
1	1	3354400013	CORONA REFRESCA VARIETY 12/12 CAN	1.0	2	1	ABOVE PREMIUM
2	1	3410051681	CAPE LINE VARIETY PACK 12/12 CAN	1.0	2	1	ABOVE PREMIUM
3	1	8769282102	ANGRY ORCHARD CRISP APPLE 6/12 BTL	0.8	3	1	ABOVE PREMIUM
4	1	8382012393	GUINNESS EXTRA STOUT 6/12 BTL	0.8	3	1	ABOVE PREMIUM

Segment # 1 : 1_1 DEPTH: 23 in WIDTH: 23 in DISTANCE FROM TOP OF BASE SHELF TO BOTTOM OF SHELF:40.00 in

POS #	FAC	UPC	NAME	CASES	CAPACITY	UNITS HIGH	Category
1	1	7199030065	COORS LIGHT 1/24 CAN	0.7	8	1	PREMIUM
2	1	7199010071	COORS BANQUET 1/24 CAN	0.7	8	1	PREMIUM
3	1	1820025000	BUD 1/25 CAN	0.5	8	1	PREMIUM
4	1	1820025001	BUD LIGHT 1/25 CAN	0.5	8	1	PREMIUM
5	1	61300874829	ARNOLD PALMER SPIKED HALF AND HALF 1/24 CAN	0.7	8	1	ABOVE PREMIUM
6	1	7089701331	FOSTERS 1/25.4 CAN	0.5	6	1	ABOVE PREMIUM
7	1	7289000478	HEINEKEN 1/22 BTL	0.5	7	1	ABOVE PREMIUM

Segment # 2 : 2_4 DEPTH: 23 in WIDTH: 23 in DISTANCE FROM TOP OF BASE SHELF TO BOTTOM OF SHELF:0.00 in

POS #	FAC	UPC	NAME	CASES	CAPACITY	UNITS HIGH	Category
1	1	8066095615	CORONA 12/12 BTL	2.0	4	1	ABOVE PREMIUM
2	1	8066095715	MODELO ESPECIAL 12/12 CAN	2.0	4	1	ABOVE PREMIUM
3	1	7289000016	HEINEKEN 12/12 BTL	2.0	4	1	ABOVE PREMIUM

Segment # 2 : 2_3 DEPTH: 23 in WIDTH: 23 in DISTANCE FROM TOP OF BASE SHELF TO BOTTOM OF SHELF:20.00 in

POS #	FAC	UPC	NAME	CASES	CAPACITY	UNITS HIGH	Category
1	1	8066095605	CORONA 6/12 BTL	0.5	2	1	ABOVE PREMIUM
2	1	78615000014	STELLA ARTOIS 12/11.2 BTL	1.0	2	1	ABOVE PREMIUM
3	1	78615000001	STELLA ARTOIS 6/11.2 BTL	0.8	3	1	ABOVE PREMIUM
4	1	7289000011	HEINEKEN 6/12 BTL	0.8	3	1	ABOVE PREMIUM

Segment # 2 : 2_2 DEPTH: 23 in WIDTH: 23 in DISTANCE FROM TOP OF BASE SHELF TO BOTTOM OF SHELF:31.00 in



CVS # 3138 COLD

Address: 206 09 LINDEN BLVD | City: CAMBRIA HEIGHTS | State: NY

Chain/StoreNumber: CVS - EAST 3138

Reset Name: 2019 SPRING

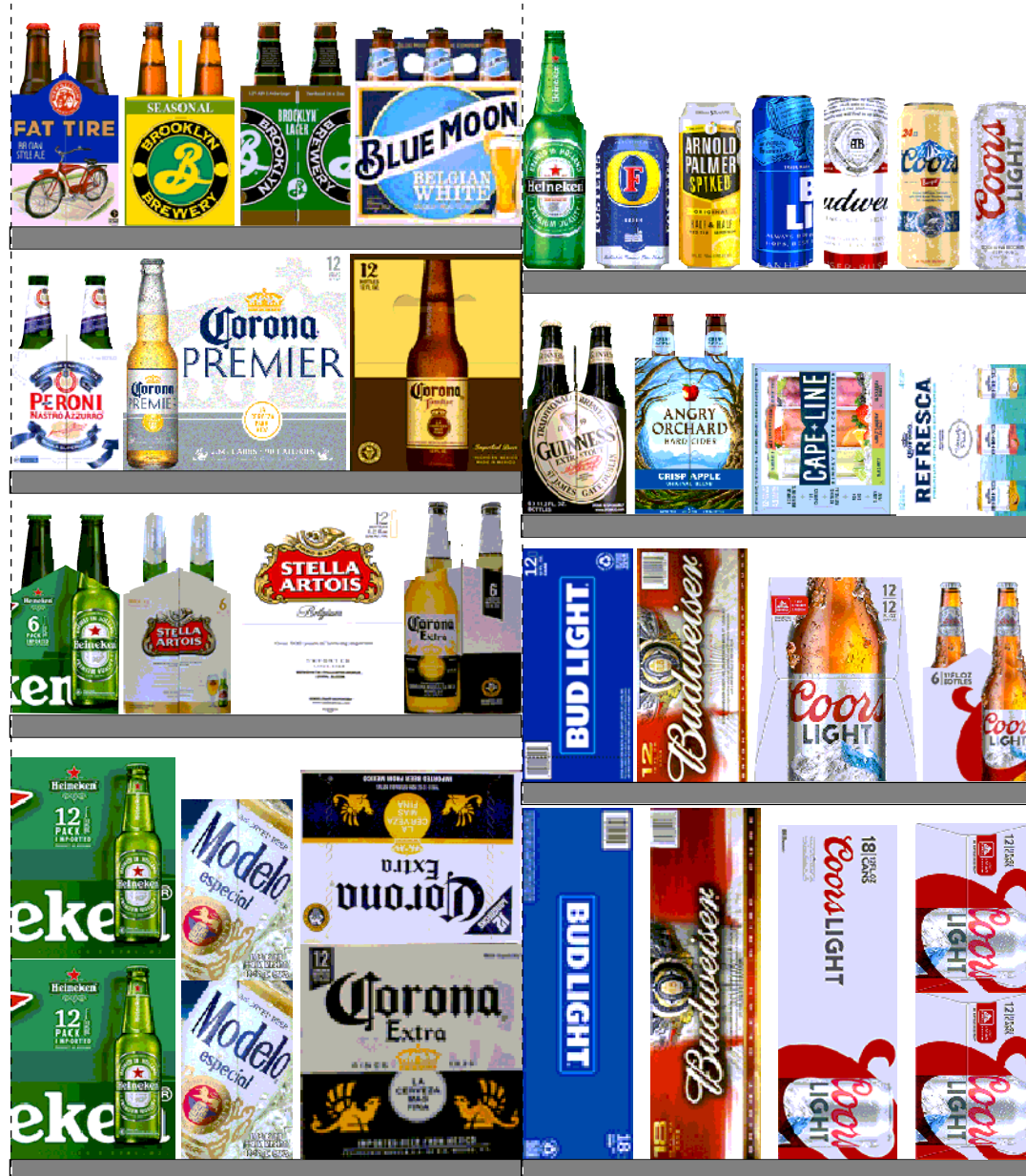
Planogram Name: 3138_2_DOOR_COLD

POS	# FAC	UPC	NAME	CASES	CAPACITY	UNITS HIGH	Category
1	1	3354495053	CORONA FAMILIAR 12/12 BTL	1.0	2	1	ABOVE PREMIUM
2	1	3354495042	CORONA PREMIER 12/12 BTL	1.0	2	1	ABOVE PREMIUM
3	1	18195400002	PERONI 6/11.2 BTL	0.8	3	1	ABOVE PREMIUM

Segment # 2 : 2_1 DEPTH: 23 in WIDTH: 23 in DISTANCE FROM TOP OF BASE SHELF TO BOTTOM OF SHELF:42.00 in

POS	# FAC	UPC	NAME	CASES	CAPACITY	UNITS HIGH	Category
1	1	7199009511	BLUE MOON BELGIAN WHITE 6/12 BTL	1.0	4	1	ABOVE PREMIUM
2	1	3061300001	BROOKLYN LAGER 6/12 BTL	0.5	2	1	ABOVE PREMIUM
3	1	3061300053	BROOKLYN SEASONAL 6/12 BTL	0.5	2	1	ABOVE PREMIUM
4	1	75452700022	NEW BELGIUM FAT TIRE 6/12 BTL	0.8	3	1	ABOVE PREMIUM

REVERSE VIEW (ONLY IF NEEDED)



REVERSE VIEW (ONLY IF NEEDED)

Segment:
1 of 2



Segment # 1 : 1_4 0.00 In

POS	UPC	NAME
1	7199000048	COORS LIGHT 12/ 12 CAN
2	7199030017	COORS LIGHT 18/ 12 CAN
3	1820011218	BUD 18/ 12 CAN
4	1820053218	BUD LIGHT 18/ 12 CAN

Segment # 1 : 1_3 17.00 In

POS	UPC	NAME
1	7199030005	COORS LIGHT 6/ 12 BTL
2	7199030069	COORS LIGHT 12/ 12 BTL
3	1820011047	BUD 12/ 12 CAN
4	1820053047	BUD LIGHT 12/ 12 CAN

Segment # 1 : 1_2 29.00 In

POS	UPC	NAME
1	3354400013	CORONA REFRESCA VARIETY 12/ 12 CAN
2	3410051681	CAPE LINE VARIETY PACK 12/ 12 CAN
3	8769282102	ANGRY ORCHARD CRISP APPLE 6/ 12 BTL
4	8382012393	GUINNESS EXTRA STOUT 6/ 12 BTL

Segment # 1 : 1_1 40.00 In

POS	UPC	NAME
1	7199030065	COORS LIGHT 1/ 24 CAN
2	7199010071	COORS BANQUET 1/24 CAN
3	1820025000	BUD 1/25 CAN
4	1820025001	BUD LIGHT 1/25 CAN
5	61300874829	ARNOLD PALMER SPIKED HALF AND HALF 1/24 CAN
6	7089701331	FOSTERS 1/25.4 CAN
7	7289000478	HEINEKEN 1/22 BTL



CVS # 3138 COLD

Reset Timing 2019 SPRING

Address: 206 09 LINDEN BLVD | City: CAMBRIA HEIGHTS | State: NY

REVERSE VIEW (ONLY IF NEEDED)

Segment:
2 of 2



Segment # 2 : 2_4 0.00 In

POS	UPC	NAME
1	8066095615	CORONA 12/ 12 BTL
2	8066095715	MODELO ESPECIAL 12/ 12 CAN
3	7289000016	HEINEKEN 12/ 12 BTL

Segment # 2 : 2_3 20.00 In

POS	UPC	NAME
1	8066095605	CORONA 6/ 12 BTL
2	78615000014	STELLA ARTOIS 12/ 11.2 BTL
3	78615000001	STELLA ARTOIS 6/ 11.2 BTL
4	7289000011	HEINEKEN 6/ 12 BTL

Segment # 2 : 2_2 31.00 In

POS	UPC	NAME
1	3354495053	CORONA FAMILIAR 12/ 12 BTL
2	3354495042	CORONA PREMIER 12/ 12 BTL
3	18195400002	PERONI 6/ 11.2 BTL

Segment # 2 : 2_1 42.00 In

POS	UPC	NAME
1	7199009511	BLUE MOON BELGIAN WHITE 6/ 12 BTL
2	3061300001	BROOKLYN LAGER 6/ 12 BTL
3	3061300053	BROOKLYN SEASONAL 6/ 12 BTL
4	75452700022	NEW BELGIUM FAT TIRE 6/ 12 BTL



CVS # 3138 COLD

Address: 206 09 LINDEN BLVD | City: CAMBRIA HEIGHTS | State: NY

Chain/StoreNumer: CVS - EAST 3138

Reset Name: 2019 SPRING

Planogram Name: 3138_2_DOOR_COLD

CVS PHARMA... Store # 3138 H: 4 ft 5.00 in W: 3 ft 10.00 in D: 1 ft 11.00 in # of segments: 2

Name: 1_1 W:23.00 in D:23.00 in Avail Space: 2.45 in Ht Space: 12.00 in

ID	UPC	Barcode	Name	Category	HFacings	Orientation	Units
10346	7199030065		COORS LIGHT 1/24 CAN	PREMIUM	1	Front	8
10243	7199010071		COORS BANQUET 1/24 CAN	PREMIUM	1	Front	8
1520	1820025000		BUD 1/25 CAN	PREMIUM	1	Front	8
1521	1820025001		BUD LIGHT 1/25 CAN	PREMIUM	1	Front	8
66064	61300874829		ARNOLD PALMER SPIKED HAL...	ABOVE PREMIUM	1	Side	8
9452	7089701331		FOSTERS 1/25.4 CAN	ABOVE PREMIUM	1	Front	6
11367	7289000478		HEINEKEN 1/22 BTL	ABOVE PREMIUM	1	Front	7

Name: 1_2 W:23.00 in D:23.00 in Avail Space: 1.02 in Ht Space: 10.00 in

ID	UPC	Barcode	Name	Category	HFacings	Orientation	Units
86777	3354400013		CORONA REFRESCA VARIETY...	ABOVE PREMIUM	1	Side 90	2
86788	3410051681		CAPE LINE VARIETY PACK 12/1...	ABOVE PREMIUM	1	Side 90	2
22090	8769282102		ANGRY ORCHARD CRISP APP...	ABOVE PREMIUM	1	Side	3
17305	8382012393		GUINNESS EXTRA STOUT 6/12...	ABOVE PREMIUM	1	Side	3

Name: 1_3 W:23.00 in D:23.00 in Avail Space: 0.68 in Ht Space: 11.00 in

ID	UPC	Barcode	Name	Category	HFacings	Orientation	Units
10322	7199030005		COORS LIGHT 6/12 BTL	PREMIUM	1	Side	3
10348	7199030069		COORS LIGHT 12/12 BTL	PREMIUM	1	Side	2
1297	1820011047		BUD 12/12 CAN	PREMIUM	1	Top 90	2



CVS # 3138 COLD

Address: 206 09 LINDEN BLVD | City: CAMBRIA HEIGHTS | State: NY

Chain/StoreNumer: CVS - EAST 3138

Reset Name: 2019 SPRING

Planogram Name: 3138_2_DOOR_COLD

1659	1820053047		BUD LIGHT 12/12 CAN	PREMIUM	1	Top 90	2
------	------------	--	---------------------	---------	---	--------	---

Name: 1_4 W:23.00 in D:23.00 in Avail Space: 2.47 in Ht Space: 16.00 in

ID	UPC	Barcode	Name	Category	HFacings	Orientation	Units
10164	7199000048		COORS LIGHT 12/12 CAN	PREMIUM	1	Side	4
10329	7199030017		COORS LIGHT 18/12 CAN	PREMIUM	1	Top 90	3
1307	1820011218		BUD 18/12 CAN	PREMIUM	1	Top 90	2
1667	1820053218		BUD LIGHT 18/12 CAN	PREMIUM	1	Top 90	2

Name: 2_1 W:23.00 in D:23.00 in Avail Space: 0.61 in Ht Space: 10.00 in

ID	UPC	Barcode	Name	Category	HFacings	Orientation	Units
10180	7199009511		BLUE MOON BELGIAN WHITE 6...	ABOVE PREMIUM	1	Front	4
2616	3061300001		BROOKLYN LAGER 6/12 BTL	ABOVE PREMIUM	1	Side	2
2638	3061300053		BROOKLYN SEASONAL 6/12 BTL	ABOVE PREMIUM	1	Side	2
13009	75452700022		NEW BELGIUM FAT TIRE 6/12 B...	ABOVE PREMIUM	1	Side	3

Name: 2_2 W:23.00 in D:23.00 in Avail Space: 0.36 in Ht Space: 10.00 in

ID	UPC	Barcode	Name	Category	HFacings	Orientation	Units
51878	3354495053		CORONA FAMILIAR 12/12 BTL	ABOVE PREMIUM	1	Side	2
44952	3354495042		CORONA PREMIER 12/12 BTL	ABOVE PREMIUM	1	Front	2
568	18195400002		PERONI 6/11.2 BTL	ABOVE PREMIUM	1	Side	3

Name: 2_3 W:23.00 in D:23.00 in Avail Space: 0.44 in Ht Space: 10.00 in

ID	UPC	Barcode	Name	Category	HFacings	Orientation	Units
15400	8066095605		CORONA 6/12 BTL	ABOVE PREMIUM	1	Side	2
14094	78615000014		STELLA ARTOIS 12/11.2 BTL	ABOVE PREMIUM	1	Side	2



CVS # 3138 COLD

Address: 206 09 LINDEN BLVD | City: CAMBRIA HEIGHTS | State: NY



Chain/StoreNumer: CVS - EAST 3138

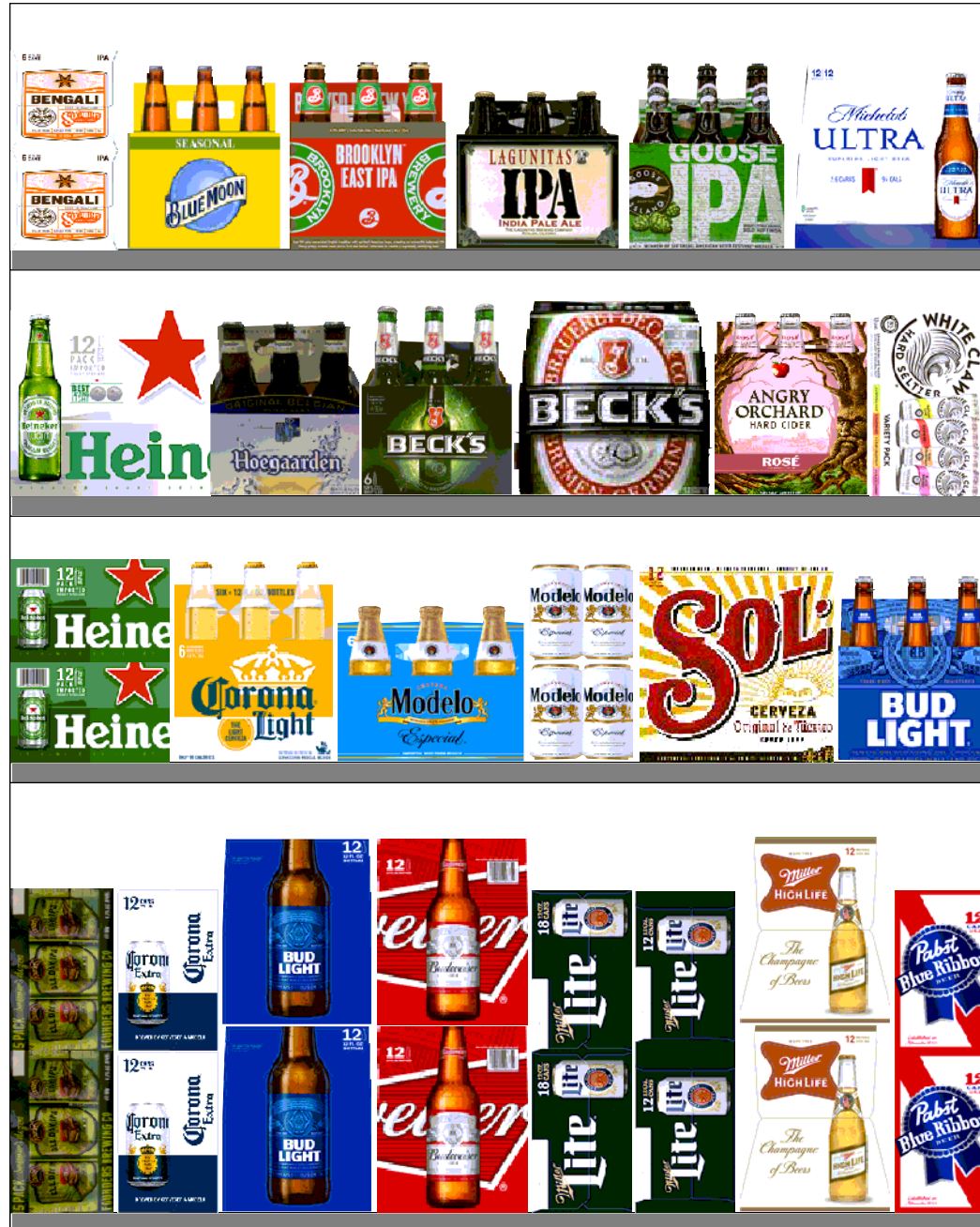
Reset Name: 2019 SPRING

Planogram Name: 3138_2_DOOR_COLD

14089	78615000001		STELLA ARTOIS 6/11.2 BTL	ABOVE PREMIUM	1	Side	3
11298	7289000011		HEINEKEN 6/12 BTL	ABOVE PREMIUM	1	Side	3

Name: 2_4 W:23.00 in D:23.00 in Avail Space: 0.75 in Ht Space: 19.00 in

ID	UPC	Barcode	Name	Category	HFacings	Orientation	Units
15403	8066095615		CORONA 12/12 BTL	ABOVE PREMIUM	1	Front	4
15429	8066095715		MODELO ESPECIAL 12/12 CAN	ABOVE PREMIUM	1	Side	4
11300	7289000016		HEINEKEN 12/12 BTL	ABOVE PREMIUM	1	Side	4





CVS # 3138 WARM

Address: 206 09 LINDEN BLVD | City: CAMBRIA HEIGHTS | State: NY

Chain/StoreNumer: CVS - EAST 3138

Reset Name: 2019 SPRING

Planogram Name: 3138_4ft_OPEN_WARM

Segment # 1 : 1_4 DEPTH: 12 in WIDTH: 48 in DISTANCE FROM TOP OF BASE SHELF TO BOTTOM OF SHELF:0.00 in

POS #	FAC	UPC	NAME	CASES	CAPACITY	UNITS HIGH	Category
1	1	64286090024	FOUNDERS ALL DAY SESSION IPA 15/12 CAN	1.0	2	1	ABOVE PREMIUM
2	1	8066095695	CORONA 12/12 CAN	1.0	2	1	ABOVE PREMIUM
3	1	1820000769	BUD LIGHT 12/12 BTL	1.0	2	1	PREMIUM
4	1	1820000771	BUD 12/12 BTL	1.0	2	1	PREMIUM
5	1	3410057340	LITE 18/12 CAN	2.0	2	1	PREMIUM
6	1	3410057636	LITE 12/12 CAN	1.0	2	1	PREMIUM
7	1	3410001509	HIGH LIFE 12/12 BTL	1.0	2	1	ECONOMY
8	1	2210000170	PABST 12/12 CAN	1.0	2	1	ECONOMY

Segment # 1 : 1_3 DEPTH: 12 in WIDTH: 48 in DISTANCE FROM TOP OF BASE SHELF TO BOTTOM OF SHELF:22.00 in

POS #	FAC	UPC	NAME	CASES	CAPACITY	UNITS HIGH	Category
1	1	7289000020	HEINEKEN 12/12 CAN	1.0	2	1	ABOVE PREMIUM
2	1	8066095625	CORONA LIGHT 6/12 BTL	0.5	2	1	ABOVE PREMIUM
3	1	8066095765	MODELO ESPECIAL 6/12 BTL	0.3	1	1	ABOVE PREMIUM
4	1	8066095755	MODELO ESPECIAL 6/12 CAN	0.5	2	1	ABOVE PREMIUM
5	1	7231123021	SOL 12/12 BTL	0.5	1	1	ABOVE PREMIUM
6	1	1820000833	BUD LIGHT 6/12 BTL	0.5	2	1	PREMIUM

Segment # 1 : 1_2 DEPTH: 12 in WIDTH: 48 in DISTANCE FROM TOP OF BASE SHELF TO BOTTOM OF SHELF:35.00 in

POS #	FAC	UPC	NAME	CASES	CAPACITY	UNITS HIGH	Category
1	1	7289000159	HEINEKEN LIGHT 12/12 BTL	0.5	1	1	ABOVE PREMIUM
2	1	78615000036	HOEGAARDEN WHITE 6/11.2 BTL	0.5	2	1	ABOVE PREMIUM
3	1	8248812345	BECKS 6/12 BTL	0.5	2	1	ABOVE PREMIUM
4	1	8248812300	BECKS 12/12 BTL	0.5	1	1	ABOVE PREMIUM
5	1	8769200660	ANGRY ORCHARD ROSE 6/12 BTL	0.5	2	1	ABOVE PREMIUM
6	1	63598554890	WHITE CLAW VARIETY PACK 12/12 CAN	0.5	1	1	ABOVE PREMIUM

Segment # 1 : 1_1 DEPTH: 12 in WIDTH: 48 in DISTANCE FROM TOP OF BASE SHELF TO BOTTOM OF SHELF:47.00 in

POS #	FAC	UPC	NAME	CASES	CAPACITY	UNITS HIGH	Category
1	1	85909300243	SIXPOINT BENGALI IPA 6/12 CAN	0.5	2	1	ABOVE PREMIUM
2	1	7199009532	BLUE MOON SEASONAL 6/12 BTL	0.5	2	1	ABOVE PREMIUM
3	1	3061300019	BROOKLYN EAST IPA 6/12 BTL	0.5	2	1	ABOVE PREMIUM
4	1	72383000009	LAGUNITAS IPA 6/12 BTL	0.5	2	1	ABOVE PREMIUM
5	1	73692011132	GOOSE ISLAND IPA 6/12 BTL	0.5	2	1	ABOVE PREMIUM
6	1	1820005990	MICHELOB ULTRA 12/12 BTL	0.5	1	1	ABOVE PREMIUM

REVERSE VIEW (ONLY IF NEEDED)





CVS # 3138 WARM

Reset Timing 2019 SPRING

Address: 206 09 LINDEN BLVD | City: CAMBRIA HEIGHTS | State: NY

REVERSE VIEW (ONLY IF NEEDED)

Segment:
1 of 1



Segment # 1 : 1_4 0.00 In

POS	UPC	NAME
1	64286090024	FOUNDERS ALL DAY SESSION IPA 15/ 12 CAN
2	8066095695	CORONA 12/ 12 CAN
3	182000769	BUD LIGHT 12/ 12 BTL
4	182000771	BUD 12/ 12 BTL
5	3410057340	LITE 18/ 12 CAN
6	3410057636	LITE 12/ 12 CAN
7	3410001509	HIGH LIFE 12/ 12 BTL
8	2210000170	PABST 12/ 12 CAN

Segment # 1 : 1_3 22.00 In

POS	UPC	NAME
1	7289000020	HEINEKEN 12/ 12 CAN
2	8066095625	CORONA LIGHT 6/ 12 BTL
3	8066095765	MODELO ESPECIAL 6/ 12 BTL
4	8066095755	MODELO ESPECIAL 6/ 12 CAN
5	7231123021	SOL 12/ 12 BTL
6	1820000833	BUD LIGHT 6/ 12 BTL

Segment # 1 : 1_2 35.00 In

POS	UPC	NAME
1	7289000159	HEINEKEN LIGHT 12/ 12 BTL
2	78615000036	HOEGAARDEN WHITE 6/ 11.2 BTL
3	8248812345	BECKS 6/ 12 BTL
4	8248812300	BECKS 12/ 12 BTL
5	8769200660	ANGRY ORCHARD ROSE 6/ 12 BTL
6	63598554890	WHITE CLAW VARIETY PACK 12/ 12 CAN

Segment # 1 : 1_1 47.00 In

POS	UPC	NAME
1	85909300243	SIXPOINT BENGALI IPA 6/ 12 CAN
2	7199009532	BLUE MOON SEASONAL 6/ 12 BTL
3	3061300019	BROOKLYN EAST IPA 6/ 12 BTL
4	72383000009	LAGUNITAS IPA 6/ 12 BTL
5	73692011132	GOOSE ISLAND IPA 6/ 12 BTL
6	1820005990	MICHELOB ULTRA 12/ 12 BTL



CVS # 3138 WARM

Address: 206 09 LINDEN BLVD | City: CAMBRIA HEIGHTS | State: NY

Chain/StoreNumer: CVS - EAST 3138

Reset Name: 2019 SPRING

Planogram Name: 3138_4ft_OPEN_WARM

CVS PHARMA... Store # 3138 H: 5 ft W: 4 ft D: 2 ft # of segments: 1

Name: 1_1 W:48.00 in D:12.00 in Avail Space: 2.27 in Ht Space: 12.00 in

ID	UPC	Barcode	Name	Category	HFacings	Orientation	Units
21073	85909300243	8 59093 00243 5	SIXPOINT BENGALI IPA 6/12 CAN	ABOVE PREMIUM	1	Side	2
10190	7199009532	0 71990 09532 1	BLUE MOON SEASONAL 6/12 B...	ABOVE PREMIUM	1	Front	2
2625	3061300019	0 30613 00019 7	BROOKLYN EAST IPA 6/12 BTL	ABOVE PREMIUM	1	Front	2
10845	72383000009	7 23830 00009 4	LAGUNITAS IPA 6/12 BTL	ABOVE PREMIUM	1	Front	2
11951	73692011132	7 36920 11132 7	GOOSE ISLAND IPA 6/12 BTL	ABOVE PREMIUM	1	Front	2
1228	1820005990	0 18200 05990 2	MICHELOB ULTRA 12/12 BTL	ABOVE PREMIUM	1	Front	1

Name: 1_2 W:48.00 in D:12.00 in Avail Space: 0.15 in Ht Space: 11.00 in

ID	UPC	Barcode	Name	Category	HFacings	Orientation	Units
11342	7289000159	0 72890 00159 7	HEINEKEN LIGHT 12/12 BTL	ABOVE PREMIUM	1	Front	1
14100	78615000036	7 86150 00036 6	HOEGAARDEN WHITE 6/11.2 B...	ABOVE PREMIUM	1	Front	2
16693	8248812345	0 82488 12345 7	BECKS 6/12 BTL	ABOVE PREMIUM	1	Front	2
16691	8248812300	0 82488 12300 6	BECKS 12/12 BTL	ABOVE PREMIUM	1	Front	1
65019	8769200660	0 87692 00660 2	ANGRY ORCHARD ROSE 6/12 ...	ABOVE PREMIUM	1	Front	2
45151	63598554890	6 35985 54890 4	WHITE CLAW VARIETY PACK 1...	ABOVE PREMIUM	1	Front 90	1

Name: 1_3 W:48.00 in D:12.00 in Avail Space: 1.10 in Ht Space: 12.00 in

ID	UPC	Barcode	Name	Category	HFacings	Orientation	Units
11301	7289000020	0 72890 00020 0	HEINEKEN 12/12 CAN	ABOVE PREMIUM	1	Side 90	2
15408	8066095625	0 80660 95625 1	CORONA LIGHT 6/12 BTL	ABOVE PREMIUM	1	Front	2



CVS # 3138 WARM

Address: 206 09 LINDEN BLVD | City: CAMBRIA HEIGHTS | State: NY

Chain/StoreNumer: CVS - EAST 3138

Reset Name: 2019 SPRING

Planogram Name: 3138_4ft_OPEN_WARM

15442	8066095765	0 80660 95765 4	MODELO ESPECIAL 6/12 BTL	ABOVE PREMIUM	1	Front	1
15435	8066095755	0 80660 95755 5	MODELO ESPECIAL 6/12 CAN	ABOVE PREMIUM	1	Side	2
10790	7231123021	0 72311 23021 6	SOL 12/12 BTL	ABOVE PREMIUM	1	Front	1
1083	1820000833	0 18200 00833 7	BUD LIGHT 6/12 BTL	PREMIUM	1	Front	2

Name: 1_4 W:48.00 in D:12.00 in Avail Space: 1.42 in Ht Space: 21.00 in

ID	UPC	Barcode	Name	Category	HFacings	Orientation	Units
7044	64286090024	6 42860 90024 5	FOUNDERS ALL DAY SESSION...	ABOVE PREMIUM	1	Side	2
15426	8066095695	0 80660 95695 4	CORONA 12/12 CAN	ABOVE PREMIUM	1	Side	2
1056	1820000769	0 18200 00769 9	BUD LIGHT 12/12 BTL	PREMIUM	1	Side	2
1058	1820000771	0 18200 00771 2	BUD 12/12 BTL	PREMIUM	1	Side	2
3552	3410057340	0 34100 57340 9	LITE 18/12 CAN	PREMIUM	1	Side	2
3579	3410057636	0 34100 57636 3	LITE 12/12 CAN	PREMIUM	1	Side	2
3198	3410001509	0 34100 01509 1	HIGH LIFE 12/12 BTL	ECONOMY	1	Side	2
2241	2210000170	0 22100 00170 1	PABST 12/12 CAN	ECONOMY	1	Side	2