



CVS # 2838 COLD

Address: 48 E MARKET ST | City: RHINEBECK | State: NY

Chain/StoreNumer: CVS - EAST 2838

Reset Name: 2019 SPRING

Planogram Name: 2838_2_DOOR_COLD

| Segment # 1 | : 1_6 | | DEPTH: 23 in | WIDTH: 22 in | DISTANCE FROM TOP OF BASE SHELF TO BOTTOM OF SHELF:0.00 in | | |
|-------------|-------|------------|---------------------------|--------------|--|------------|---------------|
| POS # | FAC | UPC | NAME | CASES | CAPACITY | UNITS HIGH | Category |
| 1 | 1 | 8066095615 | CORONA 12/12 BTL | 2.0 | 4 | 1 | ABOVE PREMIUM |
| 2 | 1 | 8066095757 | MODELO ESPECIAL 12/12 BTL | 2.0 | 4 | 1 | ABOVE PREMIUM |
| 3 | 1 | 8066095715 | MODELO ESPECIAL 12/12 CAN | 2.0 | 4 | 1 | ABOVE PREMIUM |

| Segment # 1 | : 1_5 | | DEPTH: 23 in | WIDTH: 22 in | DISTANCE FROM TOP OF BASE SHELF TO BOTTOM OF SHELF:21.00 in | | |
|-------------|-------|------------|--------------------------|--------------|---|------------|---------------|
| POS # | FAC | UPC | NAME | CASES | CAPACITY | UNITS HIGH | Category |
| 1 | 1 | 8248812300 | BECKS 12/12 BTL | 1.0 | 2 | 1 | ABOVE PREMIUM |
| 2 | 1 | 3354495042 | CORONA PREMIER 12/12 BTL | 1.0 | 2 | 1 | ABOVE PREMIUM |
| 3 | 1 | 8066095765 | MODELO ESPECIAL 6/12 BTL | 0.5 | 2 | 1 | ABOVE PREMIUM |

| Segment # 1 | : 1_4 | | DEPTH: 23 in | WIDTH: 22 in | DISTANCE FROM TOP OF BASE SHELF TO BOTTOM OF SHELF:32.00 in | | |
|-------------|-------|-------------|---------------------------|--------------|---|------------|---------------|
| POS # | FAC | UPC | NAME | CASES | CAPACITY | UNITS HIGH | Category |
| 1 | 1 | 78615000014 | STELLA ARTOIS 12/11.2 BTL | 1.0 | 2 | 1 | ABOVE PREMIUM |
| 2 | 1 | 8066095675 | CORONA LIGHT 12/12 BTL | 1.0 | 2 | 1 | ABOVE PREMIUM |
| 3 | 1 | 8066095695 | CORONA 12/12 CAN | 1.0 | 2 | 1 | ABOVE PREMIUM |

| Segment # 1 | : 1_3 | | DEPTH: 23 in | WIDTH: 22 in | DISTANCE FROM TOP OF BASE SHELF TO BOTTOM OF SHELF:44.00 in | | |
|-------------|-------|------------|-----------------------------------|--------------|---|------------|---------------|
| POS # | FAC | UPC | NAME | CASES | CAPACITY | UNITS HIGH | Category |
| 1 | 1 | 7199009516 | BLUE MOON BELGIAN WHITE 12/12 BTL | 1.0 | 2 | 1 | ABOVE PREMIUM |
| 2 | 1 | 7289000016 | HEINEKEN 12/12 BTL | 1.0 | 2 | 1 | ABOVE PREMIUM |
| 3 | 1 | 8066095605 | CORONA 6/12 BTL | 0.5 | 2 | 1 | ABOVE PREMIUM |

| Segment # 1 | : 1_2 | | DEPTH: 23 in | WIDTH: 22 in | DISTANCE FROM TOP OF BASE SHELF TO BOTTOM OF SHELF:56.00 in | | |
|-------------|-------|-------------|-----------------------------------|--------------|---|------------|---------------|
| POS # | FAC | UPC | NAME | CASES | CAPACITY | UNITS HIGH | Category |
| 1 | 1 | 7199009511 | BLUE MOON BELGIAN WHITE 6/12 BTL | 0.8 | 3 | 1 | ABOVE PREMIUM |
| 2 | 1 | 78615000001 | STELLA ARTOIS 6/11.2 BTL | 0.8 | 3 | 1 | ABOVE PREMIUM |
| 3 | 1 | 7289000011 | HEINEKEN 6/12 BTL | 0.8 | 3 | 1 | ABOVE PREMIUM |
| 4 | 1 | 3354400013 | CORONA REFRESCA VARIETY 12/12 CAN | 1.0 | 2 | 1 | ABOVE PREMIUM |

| Segment # 1 | : 1_1 | | DEPTH: 23 in | WIDTH: 22 in | DISTANCE FROM TOP OF BASE SHELF TO BOTTOM OF SHELF:67.00 in | | |
|-------------|-------|-------------|------------------------------------|--------------|---|------------|---------------|
| POS # | FAC | UPC | NAME | CASES | CAPACITY | UNITS HIGH | Category |
| 1 | 1 | 81760601020 | CAPTAIN LAWRENCE IPA 6/12 BTL | 0.8 | 3 | 1 | ABOVE PREMIUM |
| 2 | 1 | 8769210012 | SAMUEL ADAMS BOSTON LAGER 6/12 BTL | 0.8 | 3 | 1 | ABOVE PREMIUM |
| 3 | 1 | 7289000020 | HEINEKEN 12/12 CAN | 1.0 | 2 | 1 | ABOVE PREMIUM |
| 4 | 1 | 3410051681 | CAPE LINE VARIETY PACK 12/12 CAN | 1.0 | 2 | 1 | ABOVE PREMIUM |

| Segment # 2 | : 2_6 | | DEPTH: 23 in | WIDTH: 22 in | DISTANCE FROM TOP OF BASE SHELF TO BOTTOM OF SHELF:0.00 in | | |
|-------------|-------|------------|-----------------------|--------------|--|------------|----------|
| POS # | FAC | UPC | NAME | CASES | CAPACITY | UNITS HIGH | Category |
| 1 | 1 | 7199030017 | COORS LIGHT 18/12 CAN | 3.0 | 3 | 1 | PREMIUM |
| 2 | 1 | 3410057340 | LITE 18/12 CAN | 3.0 | 3 | 1 | PREMIUM |
| 3 | 1 | 1820053218 | BUD LIGHT 18/12 CAN | 3.0 | 3 | 1 | PREMIUM |
| 4 | 1 | 1820011218 | BUD 18/12 CAN | 3.0 | 3 | 1 | PREMIUM |



CVS # 2838 COLD

Address: 48 E MARKET ST | City: RHINEBECK | State: NY

Chain/StoreNumer: CVS - EAST 2838

Reset Name: 2019 SPRING

Planogram Name: 2838_2_DOOR_COLD

Segment # 2 : 2_5 DEPTH: 23 in WIDTH: 22 in DISTANCE FROM TOP OF BASE SHELF TO BOTTOM OF SHELF:20.00 in

| POS # | FAC | UPC | NAME | CASES | CAPACITY | UNITS HIGH | Category |
|-------|-----|------------|-----------------------|-------|----------|------------|----------|
| 1 | 1 | 7199000048 | COORS LIGHT 12/12 CAN | 1.5 | 3 | 1 | PREMIUM |
| 2 | 1 | 3410057636 | LITE 12/12 CAN | 1.0 | 2 | 1 | PREMIUM |
| 3 | 1 | 1820053047 | BUD LIGHT 12/12 CAN | 1.0 | 2 | 1 | PREMIUM |
| 4 | 1 | 1820011047 | BUD 12/12 CAN | 1.0 | 2 | 1 | PREMIUM |

Segment # 2 : 2_4 DEPTH: 23 in WIDTH: 22 in DISTANCE FROM TOP OF BASE SHELF TO BOTTOM OF SHELF:32.00 in

| POS # | FAC | UPC | NAME | CASES | CAPACITY | UNITS HIGH | Category |
|-------|-----|------------|-----------------------|-------|----------|------------|----------|
| 1 | 1 | 7199030069 | COORS LIGHT 12/12 BTL | 1.0 | 2 | 1 | PREMIUM |
| 2 | 1 | 1820000769 | BUD LIGHT 12/12 BTL | 1.0 | 2 | 1 | PREMIUM |
| 3 | 1 | 1820028443 | NATURAL ICE 15/12 CAN | 0.5 | 1 | 1 | ECONOMY |

Segment # 2 : 2_3 DEPTH: 23 in WIDTH: 22 in DISTANCE FROM TOP OF BASE SHELF TO BOTTOM OF SHELF:44.00 in

| POS # | FAC | UPC | NAME | CASES | CAPACITY | UNITS HIGH | Category |
|-------|-----|------------|------------------------------------|-------|----------|------------|---------------|
| 1 | 1 | 8769282102 | ANGRY ORCHARD CRISP APPLE 6/12 BTL | 1.0 | 4 | 1 | ABOVE PREMIUM |
| 2 | 1 | 3410001509 | HIGH LIFE 12/12 BTL | 1.0 | 2 | 1 | ECONOMY |
| 3 | 1 | 1820020077 | NATURAL LIGHT 15/12 CAN | 0.5 | 1 | 1 | ECONOMY |

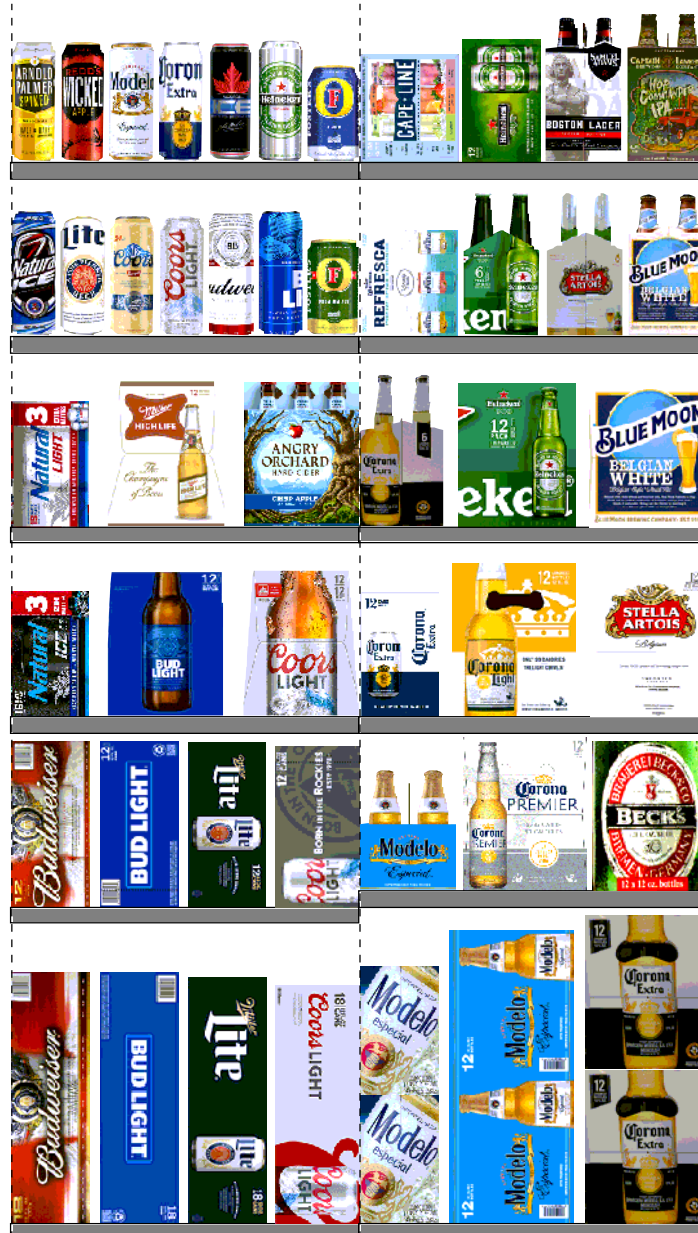
Segment # 2 : 2_2 DEPTH: 23 in WIDTH: 22 in DISTANCE FROM TOP OF BASE SHELF TO BOTTOM OF SHELF:56.00 in

| POS # | FAC | UPC | NAME | CASES | CAPACITY | UNITS HIGH | Category |
|-------|-----|------------|----------------------------|-------|----------|------------|---------------|
| 1 | 1 | 7089718331 | FOSTERS PREMIUM 1/25.4 CAN | 0.5 | 6 | 1 | ABOVE PREMIUM |
| 2 | 1 | 1820025001 | BUD LIGHT 1/25 CAN | 0.5 | 8 | 1 | PREMIUM |
| 3 | 1 | 1820025000 | BUD 1/25 CAN | 0.5 | 8 | 1 | PREMIUM |
| 4 | 1 | 7199030065 | COORS LIGHT 1/24 CAN | 0.7 | 8 | 1 | PREMIUM |
| 5 | 1 | 7199010071 | COORS BANQUET 1/24 CAN | 0.7 | 8 | 1 | PREMIUM |
| 6 | 1 | 3410000355 | LITE 1/24 CAN | 0.7 | 8 | 1 | PREMIUM |
| 7 | 1 | 1820025008 | NATURAL ICE 1/25 CAN | 0.7 | 8 | 1 | ECONOMY |

Segment # 2 : 2_1 DEPTH: 23 in WIDTH: 22 in DISTANCE FROM TOP OF BASE SHELF TO BOTTOM OF SHELF:67.00 in

| POS # | FAC | UPC | NAME | CASES | CAPACITY | UNITS HIGH | Category |
|-------|-----|-------------|---|-------|----------|------------|---------------|
| 1 | 1 | 7089701331 | FOSTERS 1/25.4 CAN | 0.5 | 6 | 1 | ABOVE PREMIUM |
| 2 | 1 | 7289000119 | HEINEKEN 1/24 CAN | 0.6 | 7 | 1 | ABOVE PREMIUM |
| 3 | 1 | 6821309451 | MOLSON ICE 1/24 CAN | 0.6 | 7 | 1 | ABOVE PREMIUM |
| 4 | 1 | 8066095643 | CORONA 1/24 CAN | 0.7 | 8 | 1 | ABOVE PREMIUM |
| 5 | 1 | 8066095721 | MODELO ESPECIAL 1/24 CAN | 0.6 | 7 | 1 | ABOVE PREMIUM |
| 6 | 1 | 3410000323 | REDD'S WICKED 1/24 CAN | 0.7 | 8 | 1 | ABOVE PREMIUM |
| 7 | 1 | 61300874829 | ARNOLD PALMER SPIKED HALF AND HALF 1/24 CAN | 0.7 | 8 | 1 | ABOVE PREMIUM |

REVERSE VIEW (ONLY IF NEEDED)





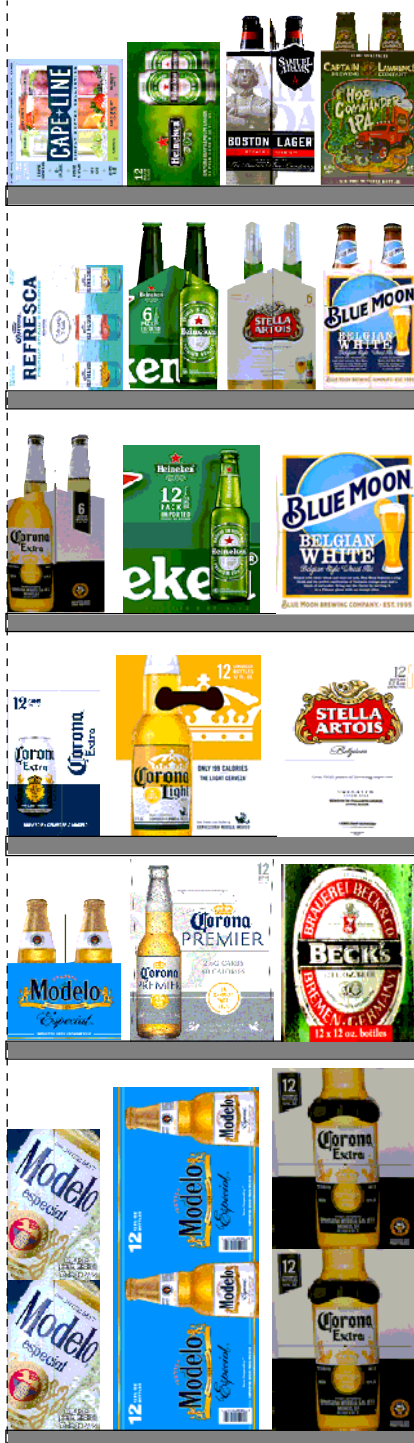
CVS # 2838 COLD

Reset Timing 2019 SPRING

Address: 48 E MARKET ST | City: RHINEBECK | State: NY

REVERSE VIEW (ONLY IF NEEDED)

Segment:
1 of 2



Segment # 1 : 1_6 0.00 In

| POS | UPC | NAME |
|-----|------------|----------------------------|
| 1 | 8066095615 | CORONA 12/ 12 BTL |
| 2 | 8066095757 | MODELO ESPECIAL 12/ 12 BTL |
| 3 | 8066095715 | MODELO ESPECIAL 12/ 12 CAN |

Segment # 1 : 1_5 21.00 In

| POS | UPC | NAME |
|-----|------------|---------------------------|
| 1 | 8248812300 | BECKS 12/ 12 BTL |
| 2 | 3354495042 | CORONA PREMIER 12/ 12 BTL |
| 3 | 8066095765 | MODELO ESPECIAL 6/ 12 BTL |

Segment # 1 : 1_4 32.00 In

| POS | UPC | NAME |
|-----|-------------|----------------------------|
| 1 | 78615000014 | STELLA ARTOIS 12/ 11.2 BTL |
| 2 | 8066095675 | CORONA LIGHT 12/ 12 BTL |
| 3 | 8066095695 | CORONA 12/ 12 CAN |

Segment # 1 : 1_3 44.00 In

| POS | UPC | NAME |
|-----|------------|------------------------------------|
| 1 | 7199009516 | BLUE MOON BELGIAN WHITE 12/ 12 BTL |
| 2 | 7289000016 | HEINEKEN 12/ 12 BTL |
| 3 | 8066095605 | CORONA 6/ 12 BTL |

Segment # 1 : 1_2 56.00 In

| POS | UPC | NAME |
|-----|-------------|------------------------------------|
| 1 | 7199009511 | BLUE MOON BELGIAN WHITE 6/ 12 BTL |
| 2 | 78615000001 | STELLA ARTOIS 6/ 11.2 BTL |
| 3 | 7289000011 | HEINEKEN 6/ 12 BTL |
| 4 | 3354400013 | CORONA REFRESCA VARIETY 12/ 12 CAN |

Segment # 1 : 1_1 67.00 In

| POS | UPC | NAME |
|-----|-------------|-------------------------------------|
| 1 | 81760601020 | CAPTAIN LAWRENCE IPA 6/ 12 BTL |
| 2 | 8769210012 | SAMUEL ADAMS BOSTON LAGER 6/ 12 BTL |
| 3 | 7289000020 | HEINEKEN 12/ 12 CAN |
| 4 | 3410051681 | CAPE LINE VARIETY PACK 12/ 12 CAN |



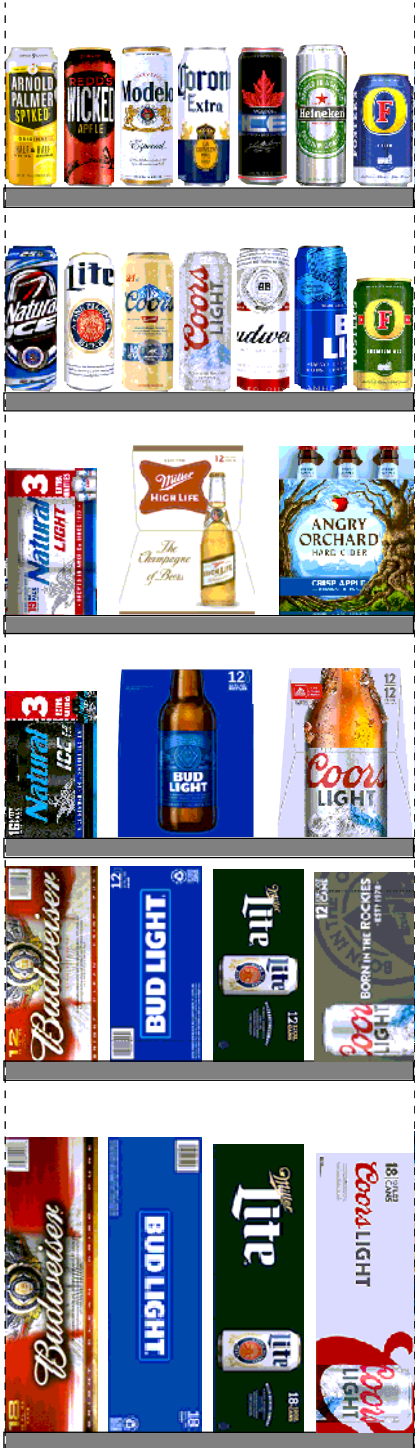
CVS # 2838 COLD

Reset Timing 2019 SPRING

Address: 48 E MARKET ST | City: RHINEBECK | State: NY

REVERSE VIEW (ONLY IF NEEDED)

Segment:
2 of 2



Segment # 2 : 2_6 0.00 In

| POS | UPC | NAME |
|-----|------------|------------------------|
| 1 | 7199030017 | COORS LIGHT 18/ 12 CAN |
| 2 | 3410057340 | LITE 18/ 12 CAN |
| 3 | 1820053218 | BUD LIGHT 18/ 12 CAN |
| 4 | 1820011218 | BUD 18/ 12 CAN |

Segment # 2 : 2_5 20.00 In

| POS | UPC | NAME |
|-----|------------|------------------------|
| 1 | 7199000048 | COORS LIGHT 12/ 12 CAN |
| 2 | 3410057636 | LITE 12/ 12 CAN |
| 3 | 1820053047 | BUD LIGHT 12/ 12 CAN |
| 4 | 1820011047 | BUD 12/ 12 CAN |

Segment # 2 : 2_4 32.00 In

| POS | UPC | NAME |
|-----|------------|------------------------|
| 1 | 7199030069 | COORS LIGHT 12/ 12 BTL |
| 2 | 1820000769 | BUD LIGHT 12/ 12 BTL |
| 3 | 1820028443 | NATURAL ICE 15/ 12 CAN |

Segment # 2 : 2_3 44.00 In

| POS | UPC | NAME |
|-----|------------|-------------------------------------|
| 1 | 8769282102 | ANGRY ORCHARD CRISP APPLE 6/ 12 BTL |
| 2 | 3410001509 | HIGH LIFE 12/ 12 BTL |
| 3 | 1820020077 | NATURAL LIGHT 15/ 12 CAN |

Segment # 2 : 2_2 56.00 In

| POS | UPC | NAME |
|-----|------------|----------------------------|
| 1 | 7089718331 | FOSTERS PREMIUM 1/25.4 CAN |
| 2 | 1820025001 | BUD LIGHT 1/25 CAN |
| 3 | 1820025000 | BUD 1/25 CAN |
| 4 | 7199030065 | COORS LIGHT 1/24 CAN |
| 5 | 7199010071 | COORS BANQUET 1/24 CAN |
| 6 | 3410000355 | LITE 1/24 CAN |
| 7 | 1820025008 | NATURAL ICE 1/25 CAN |

Segment # 2 : 2_1 67.00 In

| POS | UPC | NAME |
|-----|-------------|---|
| 1 | 7089701331 | FOSTERS 1/25.4 CAN |
| 2 | 7289000119 | HEINEKEN 1/24 CAN |
| 3 | 6821309451 | MOLSON ICE 1/24 CAN |
| 4 | 8066095643 | CORONA 1/24 CAN |
| 5 | 8066095721 | MODELO ESPECIAL 1/24 CAN |
| 6 | 3410000323 | REDD'S WICKED 1/24 CAN |
| 7 | 61300874829 | ARNOLD PALMER SPIKED HALF AND HALF 1/24 CAN |



CVS # 2838 COLD

Address: 48 E MARKET ST | City: RHINEBECK | State: NY

Chain/StoreNumer: CVS - EAST 2838

Reset Name: 2019 SPRING

Planogram Name: 2838_2_DOOR_COLD

CVS PHARMA... Store # 2838 H: 6 ft 6.00 in W: 3 ft 8.00 in D: 1 ft 11.00 in # of segments: 2

Name: 1_1 W:22.00 in D:23.00 in Avail Space: 0.78 in Ht Space: 10.00 in

| ID | UPC | Barcode | Name | Category | HFacings | Orientation | Units |
|-------|-------------|-----------------|--------------------------------|---------------|----------|-------------|-------|
| 15961 | 81760601020 | 8 17606 01020 9 | CAPTAIN LAWRENCE IPA 6/12 ... | ABOVE PREMIUM | 1 | Side | 3 |
| 21956 | 8769210012 | 0 87692 10012 6 | SAMUEL ADAMS BOSTON LAG... | ABOVE PREMIUM | 1 | Side | 3 |
| 11301 | 7289000020 | 0 72890 00020 0 | HEINEKEN 12/12 CAN | ABOVE PREMIUM | 1 | Side | 2 |
| 86788 | 3410051681 | 0 34100 51681 9 | CAPE LINE VARIETY PACK 12/1... | ABOVE PREMIUM | 1 | Side 90 | 2 |

Name: 1_2 W:22.00 in D:23.00 in Avail Space: 1.09 in Ht Space: 10.00 in

| ID | UPC | Barcode | Name | Category | HFacings | Orientation | Units |
|-------|-------------|-----------------|------------------------------|---------------|----------|-------------|-------|
| 10180 | 7199009511 | 0 71990 09511 6 | BLUE MOON BELGIAN WHITE 6... | ABOVE PREMIUM | 1 | Side | 3 |
| 14089 | 78615000001 | 7 86150 00001 4 | STELLA ARTOIS 6/11.2 BTL | ABOVE PREMIUM | 1 | Side | 3 |
| 11298 | 7289000011 | 0 72890 00011 8 | HEINEKEN 6/12 BTL | ABOVE PREMIUM | 1 | Side | 3 |
| 86777 | 3354400013 | 0 33544 00013 7 | CORONA REFRESCA VARIETY... | ABOVE PREMIUM | 1 | Side 90 | 2 |

Name: 1_3 W:22.00 in D:23.00 in Avail Space: 1.84 in Ht Space: 11.00 in

| ID | UPC | Barcode | Name | Category | HFacings | Orientation | Units |
|-------|------------|-----------------|------------------------------|---------------|----------|-------------|-------|
| 10183 | 7199009516 | 0 71990 09516 1 | BLUE MOON BELGIAN WHITE 1... | ABOVE PREMIUM | 1 | Side | 2 |
| 11300 | 7289000016 | 0 72890 00016 3 | HEINEKEN 12/12 BTL | ABOVE PREMIUM | 1 | Side | 2 |
| 15400 | 8066095605 | 0 80660 95605 3 | CORONA 6/12 BTL | ABOVE PREMIUM | 1 | Side | 2 |

Name: 1_4 W:22.00 in D:23.00 in Avail Space: 1.84 in Ht Space: 11.00 in

| ID | UPC | Barcode | Name | Category | HFacings | Orientation | Units |
|-------|-------------|-----------------|---------------------------|---------------|----------|-------------|-------|
| 14094 | 78615000014 | 7 86150 00014 4 | STELLA ARTOIS 12/11.2 BTL | ABOVE PREMIUM | 1 | Side | 2 |
| 15416 | 8066095675 | 0 80660 95675 6 | CORONA LIGHT 12/12 BTL | ABOVE PREMIUM | 1 | Side | 2 |
| 15426 | 8066095695 | 0 80660 95695 4 | CORONA 12/12 CAN | ABOVE PREMIUM | 1 | Side | 2 |



CVS # 2838 COLD

Address: 48 E MARKET ST | City: RHINEBECK | State: NY

Chain/StoreNumer: CVS - EAST 2838

Reset Name: 2019 SPRING

Planogram Name: 2838_2_DOOR_COLD

| Name: 1_5 | | W:22.00 in | D:23.00 in | Avail Space: 0.82 in | | Ht Space: 10.00 in | |
|-----------|------------|------------|--------------------------|----------------------|----------|--------------------|-------|
| ID | UPC | Barcode | Name | Category | HFacings | Orientation | Units |
| 16691 | 8248812300 | | BECKS 12/12 BTL | ABOVE PREMIUM | 1 | Side | 2 |
| 44952 | 3354495042 | | CORONA PREMIER 12/12 BTL | ABOVE PREMIUM | 1 | Side | 2 |
| 15442 | 8066095765 | | MODELO ESPECIAL 6/12 BTL | ABOVE PREMIUM | 1 | Side | 2 |

| Name: 1_6 | | W:22.00 in | D:23.00 in | Avail Space: 1.55 in | | Ht Space: 20.00 in | |
|-----------|------------|------------|---------------------------|----------------------|----------|--------------------|-------|
| ID | UPC | Barcode | Name | Category | HFacings | Orientation | Units |
| 15403 | 8066095615 | | CORONA 12/12 BTL | ABOVE PREMIUM | 1 | Side | 4 |
| 15436 | 8066095757 | | MODELO ESPECIAL 12/12 BTL | ABOVE PREMIUM | 1 | Side 90 | 4 |
| 15429 | 8066095715 | | MODELO ESPECIAL 12/12 CAN | ABOVE PREMIUM | 1 | Side | 4 |

| Name: 2_1 | | W:22.00 in | D:23.00 in | Avail Space: 1.40 in | | Ht Space: 10.00 in | |
|-----------|-------------|------------|-----------------------------|----------------------|----------|--------------------|-------|
| ID | UPC | Barcode | Name | Category | HFacings | Orientation | Units |
| 9452 | 7089701331 | | FOSTERS 1/25.4 CAN | ABOVE PREMIUM | 1 | Front | 6 |
| 11327 | 7289000119 | | HEINEKEN 1/24 CAN | ABOVE PREMIUM | 1 | Front | 7 |
| 8113 | 6821309451 | | MOLSON ICE 1/24 CAN | ABOVE PREMIUM | 1 | Front | 7 |
| 15415 | 8066095643 | | CORONA 1/24 CAN | ABOVE PREMIUM | 1 | Front | 8 |
| 15431 | 8066095721 | | MODELO ESPECIAL 1/24 CAN | ABOVE PREMIUM | 1 | Front | 7 |
| 2935 | 3410000323 | | REDD'S WICKED 1/24 CAN | ABOVE PREMIUM | 1 | Front | 8 |
| 66064 | 61300874829 | | ARNOLD PALMER SPIKED HAL... | ABOVE PREMIUM | 1 | Side | 8 |

| Name: 2_2 | | W:22.00 in | D:23.00 in | Avail Space: 1.49 in | | Ht Space: 10.00 in | |
|-----------|------------|------------|----------------------------|----------------------|----------|--------------------|-------|
| ID | UPC | Barcode | Name | Category | HFacings | Orientation | Units |
| 9488 | 7089718331 | | FOSTERS PREMIUM 1/25.4 CAN | ABOVE PREMIUM | 1 | Front | 6 |



CVS # 2838 COLD

Address: 48 E MARKET ST | City: RHINEBECK | State: NY

Chain/StoreNumer: CVS - EAST 2838

Reset Name: 2019 SPRING

Planogram Name: 2838_2_DOOR_COLD

| | | | | | | | |
|-------|------------|--|------------------------|---------|---|-------|---|
| 1521 | 1820025001 | | BUD LIGHT 1/25 CAN | PREMIUM | 1 | Front | 8 |
| 1520 | 1820025000 | | BUD 1/25 CAN | PREMIUM | 1 | Front | 8 |
| 10346 | 7199030065 | | COORS LIGHT 1/24 CAN | PREMIUM | 1 | Front | 8 |
| 10243 | 7199010071 | | COORS BANQUET 1/24 CAN | PREMIUM | 1 | Front | 8 |
| 2968 | 341000355 | | LITE 1/24 CAN | PREMIUM | 1 | Front | 8 |
| 1528 | 1820025008 | | NATURAL ICE 1/25 CAN | ECONOMY | 1 | Front | 8 |

Name: 2_3 W:22.00 in D:23.00 in Avail Space: 2.42 in Ht Space: 11.00 in

| ID | UPC | Barcode | Name | Category | HFacings | Orientation | Units |
|-------|------------|---------|----------------------------|---------------|----------|-------------|-------|
| 22090 | 8769282102 | | ANGRY ORCHARD CRISP APP... | ABOVE PREMIUM | 1 | Front | 4 |
| 3198 | 3410001509 | | HIGH LIFE 12/12 BTL | ECONOMY | 1 | Side | 2 |
| 61975 | 1820020077 | | NATURAL LIGHT 15/12 CAN | ECONOMY | 1 | Side | 1 |

Name: 2_4 W:22.00 in D:23.00 in Avail Space: 2.34 in Ht Space: 11.00 in

| ID | UPC | Barcode | Name | Category | HFacings | Orientation | Units |
|-------|------------|---------|-----------------------|----------|----------|-------------|-------|
| 10348 | 7199030069 | | COORS LIGHT 12/12 BTL | PREMIUM | 1 | Side | 2 |
| 1056 | 1820000769 | | BUD LIGHT 12/12 BTL | PREMIUM | 1 | Side | 2 |
| 66288 | 1820028443 | | NATURAL ICE 15/12 CAN | ECONOMY | 1 | Side | 1 |

Name: 2_5 W:22.00 in D:23.00 in Avail Space: 1.93 in Ht Space: 11.00 in

| ID | UPC | Barcode | Name | Category | HFacings | Orientation | Units |
|-------|------------|---------|-----------------------|----------|----------|-------------|-------|
| 10164 | 7199000048 | | COORS LIGHT 12/12 CAN | PREMIUM | 1 | Top 90 | 3 |
| 3579 | 3410057636 | | LITE 12/12 CAN | PREMIUM | 1 | Top 90 | 2 |
| 1659 | 1820053047 | | BUD LIGHT 12/12 CAN | PREMIUM | 1 | Top 90 | 2 |



CVS # 2838 COLD

Address: 48 E MARKET ST | City: RHINEBECK | State: NY

Chain/StoreNumer: CVS - EAST 2838

Reset Name: 2019 SPRING

Planogram Name: 2838_2_DOOR_COLD

| | | | | | | | |
|------|------------|--|---------------|---------|---|--------|---|
| 1297 | 1820011047 | | BUD 12/12 CAN | PREMIUM | 1 | Top 90 | 2 |
|------|------------|--|---------------|---------|---|--------|---|

Name: 2_6 W:22.00 in D:23.00 in Avail Space: 1.92 in Ht Space: 19.00 in

| ID | UPC | Barcode | Name | Category | HFacings | Orientation | Units |
|-------|------------|---------|-----------------------|----------|----------|-------------|-------|
| 10329 | 7199030017 | | COORS LIGHT 18/12 CAN | PREMIUM | 1 | Top 90 | 3 |
| 3552 | 3410057340 | | LITE 18/12 CAN | PREMIUM | 1 | Top 90 | 3 |
| 1667 | 1820053218 | | BUD LIGHT 18/12 CAN | PREMIUM | 1 | Top 90 | 3 |
| 1307 | 1820011218 | | BUD 18/12 CAN | PREMIUM | 1 | Top 90 | 3 |





CVS # 2838 WARM

Address: 48 E MARKET ST | City: RHINEBECK | State: NY

Chain/StoreNumer: CVS - EAST 2838

Reset Name: 2019 SPRING

Planogram Name: 2838_8ft_OPEN_WARM

Segment # 1 : 1_4 DEPTH: 24 in WIDTH: 96 in DISTANCE FROM TOP OF BASE SHELF TO BOTTOM OF SHELF:0.00 in

| POS # | FAC | UPC | NAME | CASES | CAPACITY | UNITS HIGH | Category |
|-------|-----|------------|------------------------------------|-------|----------|------------|---------------|
| 1 | 1 | 7861500014 | STELLA ARTOIS 12/11.2 BTL | 3.0 | 6 | 1 | ABOVE PREMIUM |
| 2 | 1 | 7231123021 | SOL 12/12 BTL | 2.0 | 4 | 1 | ABOVE PREMIUM |
| 3 | 1 | 8066095615 | CORONA 12/12 BTL | 3.0 | 6 | 1 | ABOVE PREMIUM |
| 4 | 1 | 8066095680 | CORONA 18/12 BTL | 2.0 | 2 | 1 | ABOVE PREMIUM |
| 5 | 1 | 3354495042 | CORONA PREMIER 12/12 BTL | 2.0 | 4 | 1 | ABOVE PREMIUM |
| 6 | 1 | 1820020083 | MICHELOB ULTRA PURE GOLD 12/12 BTL | 2.0 | 4 | 1 | ABOVE PREMIUM |
| 7 | 1 | 1820005990 | MICHELOB ULTRA 12/12 BTL | 2.0 | 4 | 1 | ABOVE PREMIUM |
| 8 | 1 | 1820096721 | MICHELOB ULTRA 18/12 CAN | 3.0 | 3 | 1 | ABOVE PREMIUM |
| 9 | 1 | 1820053308 | BUD LIGHT 18/12 BTL | 2.0 | 2 | 1 | PREMIUM |
| 10 | 1 | 7199030078 | COORS LIGHT 18/12 BTL | 2.0 | 2 | 1 | PREMIUM |
| 11 | 1 | 7199030030 | COORS LIGHT 30/12 CAN | 2.0 | 2 | 1 | PREMIUM |
| 12 | 1 | 3410001509 | HIGH LIFE 12/12 BTL | 2.0 | 4 | 1 | ECONOMY |

Segment # 1 : 1_3 DEPTH: 24 in WIDTH: 96 in DISTANCE FROM TOP OF BASE SHELF TO BOTTOM OF SHELF:23.00 in

| POS # | FAC | UPC | NAME | CASES | CAPACITY | UNITS HIGH | Category |
|-------|-----|-------------|-------------------------------------|-------|----------|------------|---------------|
| 1 | 1 | 7289000159 | HEINEKEN LIGHT 12/12 BTL | 1.5 | 3 | 1 | ABOVE PREMIUM |
| 2 | 1 | 75452700161 | NEW BELGIUM FAT TIRE 12/12 CAN | 1.0 | 2 | 1 | ABOVE PREMIUM |
| 3 | 1 | 8769201103 | SAMUEL ADAMS SEASONAL 12/12 BTL (A) | 1.5 | 3 | 1 | ABOVE PREMIUM |
| 4 | 1 | 8769210014 | SAMUEL ADAMS BOSTON LAGER 12/12 BTL | 1.0 | 2 | 1 | ABOVE PREMIUM |
| 5 | 1 | 8066095715 | MODELO ESPECIAL 12/12 CAN | 2.0 | 4 | 1 | ABOVE PREMIUM |
| 6 | 1 | 8066095757 | MODELO ESPECIAL 12/12 BTL | 1.0 | 2 | 1 | ABOVE PREMIUM |
| 7 | 1 | 8066095787 | MODELO NEGRA 12/12 BTL | 1.0 | 2 | 1 | ABOVE PREMIUM |
| 8 | 1 | 1820000771 | BUD 12/12 BTL | 1.5 | 3 | 1 | PREMIUM |
| 9 | 1 | 3410057509 | LITE 12/12 BTL | 1.5 | 3 | 1 | PREMIUM |
| 10 | 1 | 3410001636 | HIGH LIFE 12/12 CAN | 1.5 | 3 | 1 | ECONOMY |

Segment # 1 : 1_2 DEPTH: 24 in WIDTH: 96 in DISTANCE FROM TOP OF BASE SHELF TO BOTTOM OF SHELF:35.00 in

| POS # | FAC | UPC | NAME | CASES | CAPACITY | UNITS HIGH | Category |
|-------|-----|-------------|-------------------------------------|-------|----------|------------|---------------|
| 1 | 1 | 3061300001 | BROOKLYN LAGER 6/12 BTL | 1.0 | 4 | 1 | ABOVE PREMIUM |
| 2 | 1 | 8769230050 | SAMUEL ADAMS SEASONAL 6/12 BTL (A) | 1.0 | 4 | 1 | ABOVE PREMIUM |
| 3 | 1 | 8834510151 | STRONGBOW GOLD 6/11.2 BTL | 1.3 | 5 | 1 | ABOVE PREMIUM |
| 4 | 1 | 63598512998 | MIKES HARD VARIETY PACK 12/11.2 BTL | 1.0 | 2 | 1 | ABOVE PREMIUM |
| 5 | 1 | 63598510062 | MIKES HARD LEMONADE 6/11.2 BTL | 1.0 | 4 | 1 | ABOVE PREMIUM |
| 6 | 1 | 8769200660 | ANGRY ORCHARD ROSE 6/12 BTL | 1.0 | 4 | 1 | ABOVE PREMIUM |
| 7 | 1 | 7861500001 | STELLA ARTOIS 6/11.2 BTL | 1.0 | 4 | 1 | ABOVE PREMIUM |
| 8 | 1 | 8066095625 | CORONA LIGHT 6/12 BTL | 1.0 | 4 | 1 | ABOVE PREMIUM |
| 9 | 1 | 7231163012 | DOS EQUIS 6/12 BTL | 1.0 | 4 | 1 | ABOVE PREMIUM |
| 10 | 1 | 1820053047 | BUD LIGHT 12/12 CAN | 3.0 | 6 | 1 | PREMIUM |
| 11 | 1 | 7199000008 | COORS LIGHT 6/12 CAN | 1.5 | 6 | 1 | PREMIUM |
| 12 | 1 | 1820028443 | NATURAL ICE 15/12 CAN | 1.0 | 2 | 1 | ECONOMY |

Segment # 1 : 1_1 DEPTH: 24 in WIDTH: 96 in DISTANCE FROM TOP OF BASE SHELF TO BOTTOM OF SHELF:49.00 in

| POS # | FAC | UPC | NAME | CASES | CAPACITY | UNITS HIGH | Category |
|-------|-----|-------------|--|-------|----------|------------|---------------|
| 1 | 1 | 75452700022 | NEW BELGIUM FAT TIRE 6/12 BTL | 1.0 | 4 | 1 | ABOVE PREMIUM |
| 2 | 1 | 81760601000 | CAPTAIN LAWRENCE FRESHCHESTER 6/12 BTL | 1.0 | 4 | 1 | ABOVE PREMIUM |
| 3 | 1 | 73692011132 | GOOSE ISLAND IPA 6/12 BTL | 1.0 | 4 | 1 | ABOVE PREMIUM |
| 4 | 1 | 1820013986 | SHOCK TOP BELGIAN WHITE 6/12 BTL | 1.0 | 4 | 1 | ABOVE PREMIUM |
| 5 | 1 | 3410051605 | LEINIES SEASONAL SHANDY 6/12 BTL | 1.0 | 4 | 1 | ABOVE PREMIUM |



CVS # 2838 WARM

Address: 48 E MARKET ST | City: RHINEBECK | State: NY

Chain/StoreNumber: CVS - EAST 2838

Reset Name: 2019 SPRING

Planogram Name: 2838_8ft_OPEN_WARM

| | | | | | | | |
|----|---|-------------|--|-----|---|---|---------------|
| 6 | 1 | 63598554890 | WHITE CLAW VARIETY PACK 12/12 CAN | 1.5 | 3 | 1 | ABOVE PREMIUM |
| 7 | 1 | 8769200424 | TRULY VARIETY PACK 12/12 CAN | 1.5 | 3 | 1 | ABOVE PREMIUM |
| 8 | 1 | 85389700227 | BON AND VIV SPIKED SELTZER VARIETY 12/12 CAN | 1.5 | 3 | 1 | ABOVE PREMIUM |
| 9 | 1 | 8066095621 | CORONA LIGHT 12/12 CAN | 1.5 | 3 | 1 | ABOVE PREMIUM |
| 10 | 1 | 8066095605 | CORONA 6/12 BTL | 1.0 | 4 | 1 | ABOVE PREMIUM |
| 11 | 1 | 8066095765 | MODELO ESPECIAL 6/12 BTL | 0.8 | 3 | 1 | ABOVE PREMIUM |
| 12 | 1 | 8066095785 | MODELO NEGRA 6/12 BTL | 0.8 | 3 | 1 | ABOVE PREMIUM |
| 13 | 2 | 7199030120 | COORS LIGHT 3/24 CAN | 1.0 | 4 | 2 | PREMIUM |

REVERSE VIEW (ONLY IF NEEDED)





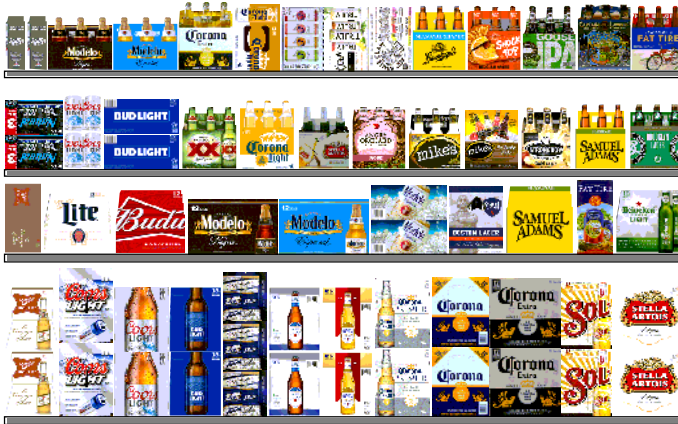
CVS # 2838 WARM

Reset Timing 2019 SPRING

Address: 48 E MARKET ST | City: RHINEBECK | State: NY

REVERSE VIEW (ONLY IF NEEDED)

Segment:
1 of 1



Segment # 1 : 1_4 0.00 In

| POS | UPC | NAME |
|-----|-------------|-------------------------------------|
| 1 | 78615000014 | STELLA ARTOIS 12/ 11.2 BTL |
| 2 | 7231123021 | SOL 12/ 12 BTL |
| 3 | 8066095615 | CORONA 12/ 12 BTL |
| 4 | 8066095680 | CORONA 18/ 12 BTL |
| 5 | 3354495042 | CORONA PREMIER 12/ 12 BTL |
| 6 | 1820020083 | MICHELOB ULTRA PURE GOLD 12/ 12 BTL |
| 7 | 1820005990 | MICHELOB ULTRA 12/ 12 BTL |
| 8 | 1820096721 | MICHELOB ULTRA 18/ 12 CAN |
| 9 | 1820053308 | BUD LIGHT 18/ 12 BTL |
| 10 | 7199030078 | COORS LIGHT 18/ 12 BTL |
| 11 | 7199030030 | COORS LIGHT 30/ 12 CAN |
| 12 | 3410001509 | HIGH LIFE 12/ 12 BTL |

Segment # 1 : 1_3 23.00 In

| POS | UPC | NAME |
|-----|-------------|--------------------------------------|
| 1 | 7289000159 | HEINEKEN LIGHT 12/ 12 BTL |
| 2 | 75452700161 | NEW BELGIUM FAT TIRE 12/ 12 CAN |
| 3 | 8769201103 | SAMUEL ADAMS SEASONAL 12/ 12 BTL (A) |
| 4 | 8769210014 | SAMUEL ADAMS BOSTON LAGER 12/ 12 BTL |
| 5 | 8066095715 | MODELO ESPECIAL 12/ 12 CAN |
| 6 | 8066095757 | MODELO ESPECIAL 12/ 12 BTL |
| 7 | 8066095787 | MODELO NEGRA 12/ 12 BTL |
| 8 | 1820000771 | BUD 12/ 12 BTL |
| 9 | 3410057509 | LITE 12/ 12 BTL |
| 10 | 3410001636 | HIGH LIFE 12/ 12 CAN |

Segment # 1 : 1_2 35.00 In

| POS | UPC | NAME |
|-----|-------------|--------------------------------------|
| 1 | 3061300001 | BROOKLYN LAGER 6/ 12 BTL |
| 2 | 8769230050 | SAMUEL ADAMS SEASONAL 6/ 12 BTL (A) |
| 3 | 8834510151 | STRONGBOW GOLD 6/ 11.2 BTL |
| 4 | 63598512998 | MIKES HARD VARIETY PACK 12/ 11.2 BTL |
| 5 | 63598510062 | MIKES HARD LEMONADE 6/ 11.2 BTL |
| 6 | 8769200660 | ANGRY ORCHARD ROSE 6/ 12 BTL |
| 7 | 78615000001 | STELLA ARTOIS 6/ 11.2 BTL |
| 8 | 8066095625 | CORONA LIGHT 6/ 12 BTL |
| 9 | 7231163012 | DOS EQUIS 6/ 12 BTL |
| 10 | 1820053047 | BUD LIGHT 12/ 12 CAN |
| 11 | 7199000008 | COORS LIGHT 6/ 12 CAN |
| 12 | 1820028443 | NATURAL ICE 15/ 12 CAN |

Segment # 1 : 1_1 49.00 In

| POS | UPC | NAME |
|-----|-------------|---|
| 1 | 75452700022 | NEW BELGIUM FAT TIRE 6/ 12 BTL |
| 2 | 81760601000 | CAPTAIN LAWRENCE FRESHCHESTER 6/ 12 BTL |
| 3 | 73692011132 | GOOSE ISLAND IPA 6/ 12 BTL |
| 4 | 1820013986 | SHOCK TOP BELGIAN WHITE 6/ 12 BTL |
| 5 | 3410051605 | LEINIES SEASONAL SHANDY 6/ 12 BTL |
| 6 | 63598554890 | WHITE CLAW VARIETY PACK 12/ 12 CAN |
| 7 | 8769200424 | TRULY VARIETY PACK 12/ 12 CAN |
| 8 | 85389700227 | BON AND VIV SPIKED SELTZER VARIETY 12/ 12 CAN |
| 9 | 8066095621 | CORONA LIGHT 12/ 12 CAN |
| 10 | 8066095605 | CORONA 6/ 12 BTL |
| 11 | 8066095765 | MODELO ESPECIAL 6/ 12 BTL |
| 12 | 8066095785 | MODELO NEGRA 6/ 12 BTL |
| 13 | 7199030120 | COORS LIGHT 3/ 24 CAN |



CVS # 2838 WARM

Address: 48 E MARKET ST | City: RHINEBECK | State: NY

Chain/StoreNumer: CVS - EAST 2838

Reset Name: 2019 SPRING

Planogram Name: 2838_8ft_OPEN_WARM

CVS PHARMA... Store # 2838 H: 5 ft W: 8 ft D: 2 ft # of segments: 1

Name: 1_1 W:96.00 in D:24.00 in Avail Space: 1.67 in Ht Space: 10.00 in

| ID | UPC | Barcode | Name | Category | HFacings | Orientation | Units |
|-------|-------------|-----------------|--------------------------------|---------------|----------|-------------|-------|
| 13009 | 75452700022 | 7 54527 00022 6 | NEW BELGIUM FAT TIRE 6/12 B... | ABOVE PREMIUM | 1 | Front | 4 |
| 15955 | 81760601000 | 8 17606 01000 1 | CAPTAIN LAWRENCE FRESHC... | ABOVE PREMIUM | 1 | Front | 4 |
| 11951 | 73692011132 | 7 36920 11132 7 | GOOSE ISLAND IPA 6/12 BTL | ABOVE PREMIUM | 1 | Front | 4 |
| 1345 | 1820013986 | 0 18200 13986 4 | SHOCK TOP BELGIAN WHITE 6... | ABOVE PREMIUM | 1 | Front | 4 |
| 3492 | 3410051605 | 0 34100 51605 5 | LEINIES SEASONAL SHANDY 6... | ABOVE PREMIUM | 1 | Front | 4 |
| 45151 | 63598554890 | 6 35985 54890 4 | WHITE CLAW VARIETY PACK 1... | ABOVE PREMIUM | 1 | Front 90 | 3 |
| 43031 | 8769200424 | 0 87692 00424 0 | TRULY VARIETY PACK 12/12 C... | ABOVE PREMIUM | 1 | Front 90 | 3 |
| 19178 | 85389700227 | 8 53897 00227 1 | BON AND VIV SPIKED SELTZE... | ABOVE PREMIUM | 1 | Front 90 | 3 |
| 15406 | 8066095621 | 0 80660 95621 3 | CORONA LIGHT 12/12 CAN | ABOVE PREMIUM | 1 | Top 90 | 3 |
| 15400 | 8066095605 | 0 80660 95605 3 | CORONA 6/12 BTL | ABOVE PREMIUM | 1 | Front | 4 |
| 15442 | 8066095765 | 0 80660 95765 4 | MODELO ESPECIAL 6/12 BTL | ABOVE PREMIUM | 1 | Front | 3 |
| 15448 | 8066095785 | 0 80660 95785 2 | MODELO NEGRA 6/12 BTL | ABOVE PREMIUM | 1 | Front | 3 |
| 10372 | 7199030120 | 0 71990 30120 0 | COORS LIGHT 3/24 CAN | PREMIUM | 2 | Side | 4 |

Name: 1_2 W:96.00 in D:24.00 in Avail Space: 5.16 in Ht Space: 13.00 in

| ID | UPC | Barcode | Name | Category | HFacings | Orientation | Units |
|-------|------------|-----------------|-----------------------------|---------------|----------|-------------|-------|
| 2616 | 3061300001 | 0 30613 00001 2 | BROOKLYN LAGER 6/12 BTL | ABOVE PREMIUM | 1 | Front | 4 |
| 21995 | 8769230050 | 0 87692 30050 2 | SAMUEL ADAMS SEASONAL 6/... | ABOVE PREMIUM | 1 | Front | 4 |



CVS # 2838 WARM

Address: 48 E MARKET ST | City: RHINEBECK | State: NY

Chain/StoreNumer: CVS - EAST 2838

Reset Name: 2019 SPRING

Planogram Name: 2838_8ft_OPEN_WARM

| | | | | | | | | |
|-------|-------------|--|-----------------|------------------------------|---------------|---|---------|---|
| 22457 | 8834510151 | | 0 88345 10151 4 | STRONGBOW GOLD 6/11.2 BTL | ABOVE PREMIUM | 1 | Front | 5 |
| 6433 | 63598512998 | | 6 35985 12998 1 | MIKES HARD VARIETY PACK 1... | ABOVE PREMIUM | 1 | Side | 2 |
| 6413 | 63598510062 | | 6 35985 10062 1 | MIKES HARD LEMONADE 6/11.... | ABOVE PREMIUM | 1 | Front | 4 |
| 65019 | 8769200660 | | 0 87692 00660 2 | ANGRY ORCHARD ROSE 6/12 ... | ABOVE PREMIUM | 1 | Front | 4 |
| 14089 | 78615000001 | | 7 86150 00001 4 | STELLA ARTOIS 6/11.2 BTL | ABOVE PREMIUM | 1 | Front | 4 |
| 15408 | 8066095625 | | 0 80660 95625 1 | CORONA LIGHT 6/12 BTL | ABOVE PREMIUM | 1 | Front | 4 |
| 10813 | 7231163012 | | 0 72311 63012 2 | DOS EQUIS 6/12 BTL | ABOVE PREMIUM | 1 | Front | 4 |
| 1659 | 1820053047 | | 0 18200 53047 0 | BUD LIGHT 12/12 CAN | PREMIUM | 1 | Top | 6 |
| 10155 | 7199000008 | | 0 71990 00008 0 | COORS LIGHT 6/12 CAN | PREMIUM | 1 | Side | 6 |
| 66288 | 1820028443 | | 0 18200 28443 4 | NATURAL ICE 15/12 CAN | ECONOMY | 1 | Side 90 | 2 |

Name: 1_3 W:96.00 in D:24.00 in Avail Space: 4.18 in Ht Space: 11.00 in

| ID | UPC | Barcode | Name | Category | HFacings | Orientation | Units | |
|-------|-------------|---------|-----------------|--------------------------------|---------------|-------------|--------|---|
| 11342 | 7289000159 | | 0 72890 00159 7 | HEINEKEN LIGHT 12/12 BTL | ABOVE PREMIUM | 1 | Front | 3 |
| 13037 | 75452700161 | | 7 54527 00161 2 | NEW BELGIUM FAT TIRE 12/12 ... | ABOVE PREMIUM | 1 | Top 90 | 2 |
| 21940 | 8769201103 | | 0 87692 01103 3 | SAMUEL ADAMS SEASONAL 1... | ABOVE PREMIUM | 1 | Front | 3 |
| 21957 | 8769210014 | | 0 87692 10014 0 | SAMUEL ADAMS BOSTON LAG... | ABOVE PREMIUM | 1 | Side | 2 |
| 15429 | 8066095715 | | 0 80660 95715 9 | MODELO ESPECIAL 12/12 CAN | ABOVE PREMIUM | 1 | Top | 4 |
| 15436 | 8066095757 | | 0 80660 95757 9 | MODELO ESPECIAL 12/12 BTL | ABOVE PREMIUM | 1 | Front | 2 |
| 15449 | 8066095787 | | 0 80660 95787 6 | MODELO NEGRA 12/12 BTL | ABOVE PREMIUM | 1 | Front | 2 |



CVS # 2838 WARM

Address: 48 E MARKET ST | City: RHINEBECK | State: NY

Chain/StoreNumer: CVS - EAST 2838

Reset Name: 2019 SPRING

Planogram Name: 2838_8ft_OPEN_WARM

| | | | | | | | |
|------|------------|--|---------------------|---------|---|--------|---|
| 1058 | 182000771 | | BUD 12/12 BTL | PREMIUM | 1 | Front | 3 |
| 3565 | 3410057509 | | LITE 12/12 BTL | PREMIUM | 1 | Front | 3 |
| 3202 | 3410001636 | | HIGH LIFE 12/12 CAN | ECONOMY | 1 | Top 90 | 3 |

Name: 1_4 W:96.00 in D:24.00 in Avail Space: 2.46 in Ht Space: 22.00 in

| ID | UPC | Barcode | Name | Category | HFacings | Orientation | Units |
|-------|-------------|---------|-----------------------------|---------------|----------|-------------|-------|
| 14094 | 78615000014 | | STELLA ARTOIS 12/11.2 BTL | ABOVE PREMIUM | 1 | Front | 6 |
| 10790 | 7231123021 | | SOL 12/12 BTL | ABOVE PREMIUM | 1 | Side | 4 |
| 15403 | 8066095615 | | CORONA 12/12 BTL | ABOVE PREMIUM | 1 | Front | 6 |
| 15417 | 8066095680 | | CORONA 18/12 BTL | ABOVE PREMIUM | 1 | Side | 2 |
| 44952 | 3354495042 | | CORONA PREMIER 12/12 BTL | ABOVE PREMIUM | 1 | Side | 4 |
| 65828 | 1820020083 | | MICHELOB ULTRA PURE GOLD... | ABOVE PREMIUM | 1 | Side | 4 |
| 1228 | 1820005990 | | MICHELOB ULTRA 12/12 BTL | ABOVE PREMIUM | 1 | Side | 4 |
| 1850 | 1820096721 | | MICHELOB ULTRA 18/12 CAN | ABOVE PREMIUM | 1 | Side | 3 |
| 1670 | 1820053308 | | BUD LIGHT 18/12 BTL | PREMIUM | 1 | Side | 2 |
| 10352 | 7199030078 | | COORS LIGHT 18/12 BTL | PREMIUM | 1 | Side | 2 |
| 10336 | 7199030030 | | COORS LIGHT 30/12 CAN | PREMIUM | 1 | Side | 2 |
| 3198 | 3410001509 | | HIGH LIFE 12/12 BTL | ECONOMY | 1 | Side | 4 |