





CVS # 07032 COLD

Address: 450 MAIN ST | City: ARMONK | State: NY

Chain/StoreNumer: CVS - EAST 07032

Reset Name: 2019 SPRING

Planogram Name: 7032_4_DOOR_COLD

Segment # 1 : 1_5 DEPTH: 23 in WIDTH: 22 in DISTANCE FROM TOP OF BASE SHELF TO BOTTOM OF SHELF:0.00 in

POS #	FAC	UPC	NAME	CASES	CAPACITY	UNITS HIGH	Category
1	1	75452700161	NEW BELGIUM FAT TIRE 12/12 CAN	2.0	4	1	ABOVE PREMIUM
2	1	8248812300	BECKS 12/12 BTL	2.0	4	1	ABOVE PREMIUM
3	1	8066095757	MODELO ESPECIAL 12/12 BTL	2.0	4	1	ABOVE PREMIUM

Segment # 1 : 1_4 DEPTH: 23 in WIDTH: 22 in DISTANCE FROM TOP OF BASE SHELF TO BOTTOM OF SHELF:23.00 in

POS #	FAC	UPC	NAME	CASES	CAPACITY	UNITS HIGH	Category
1	1	7289000020	HEINEKEN 12/12 CAN	2.0	4	1	ABOVE PREMIUM
2	1	7289000016	HEINEKEN 12/12 BTL	2.0	4	1	ABOVE PREMIUM
3	1	78615000014	STELLA ARTOIS 12/11.2 BTL	2.0	4	1	ABOVE PREMIUM

Segment # 1 : 1_3 DEPTH: 23 in WIDTH: 22 in DISTANCE FROM TOP OF BASE SHELF TO BOTTOM OF SHELF:44.00 in

POS #	FAC	UPC	NAME	CASES	CAPACITY	UNITS HIGH	Category
1	1	7199009516	BLUE MOON BELGIAN WHITE 12/12 BTL	1.0	2	1	ABOVE PREMIUM
2	1	72890000159	HEINEKEN LIGHT 12/12 BTL	1.0	2	1	ABOVE PREMIUM
3	1	78615000001	STELLA ARTOIS 6/11.2 BTL	0.8	3	1	ABOVE PREMIUM

Segment # 1 : 1_2 DEPTH: 23 in WIDTH: 22 in DISTANCE FROM TOP OF BASE SHELF TO BOTTOM OF SHELF:56.00 in

POS #	FAC	UPC	NAME	CASES	CAPACITY	UNITS HIGH	Category
1	1	81760601000	CAPTAIN LAWRENCE FRESHCHESTER 6/12 BTL	0.8	3	1	ABOVE PREMIUM
2	1	81760601020	CAPTAIN LAWRENCE IPA 6/12 BTL	0.8	3	1	ABOVE PREMIUM
3	1	7199009511	BLUE MOON BELGIAN WHITE 6/12 BTL	0.8	3	1	ABOVE PREMIUM
4	1	72890000011	HEINEKEN 6/12 BTL	0.8	3	1	ABOVE PREMIUM

Segment # 1 : 1_1 DEPTH: 23 in WIDTH: 22 in DISTANCE FROM TOP OF BASE SHELF TO BOTTOM OF SHELF:68.00 in

POS #	FAC	UPC	NAME	CASES	CAPACITY	UNITS HIGH	Category
1	1	8769210012	SAMUEL ADAMS BOSTON LAGER 6/12 BTL	0.8	3	1	ABOVE PREMIUM
2	1	8769230050	SAMUEL ADAMS SEASONAL 6/12 BTL (A)	0.8	3	1	ABOVE PREMIUM
3	1	75452700022	NEW BELGIUM FAT TIRE 6/12 BTL	0.8	3	1	ABOVE PREMIUM
4	1	30613000001	BROOKLYN LAGER 6/12 BTL	0.5	2	1	ABOVE PREMIUM

Segment # 2 : 2_5 DEPTH: 23 in WIDTH: 22 in DISTANCE FROM TOP OF BASE SHELF TO BOTTOM OF SHELF:0.00 in

POS #	FAC	UPC	NAME	CASES	CAPACITY	UNITS HIGH	Category
1	1	8066095695	CORONA 12/12 CAN	2.0	4	1	ABOVE PREMIUM
2	1	8066095680	CORONA 18/12 BTL	2.0	2	1	ABOVE PREMIUM
3	1	8066095615	CORONA 12/12 BTL	2.0	4	1	ABOVE PREMIUM

Segment # 2 : 2_4 DEPTH: 23 in WIDTH: 22 in DISTANCE FROM TOP OF BASE SHELF TO BOTTOM OF SHELF:23.00 in

POS #	FAC	UPC	NAME	CASES	CAPACITY	UNITS HIGH	Category
1	1	8066095715	MODELO ESPECIAL 12/12 CAN	2.0	4	1	ABOVE PREMIUM
2	1	8066095675	CORONA LIGHT 12/12 BTL	2.0	4	1	ABOVE PREMIUM
3	1	8066095615	CORONA 12/12 BTL	2.0	4	1	ABOVE PREMIUM



CVS # 07032 COLD

Address: 450 MAIN ST | City: ARMONK | State: NY

Chain/StoreNumer: CVS - EAST 07032

Reset Name: 2019 SPRING

Planogram Name: 7032_4_DOOR_COLD

Segment # 2 : 2_3 DEPTH: 23 in WIDTH: 22 in DISTANCE FROM TOP OF BASE SHELF TO BOTTOM OF SHELF:44.00 in

POS	# FAC	UPC	NAME	CASES	CAPACITY	UNITS HIGH	Category
1	1	8066095765	MODELO ESPECIAL 6/12 BTL	0.5	2	1	ABOVE PREMIUM
2	1	3354495042	CORONA PREMIER 12/12 BTL	1.0	2	1	ABOVE PREMIUM
3	1	8066095605	CORONA 6/12 BTL	0.5	2	1	ABOVE PREMIUM

Segment # 2 : 2_2 DEPTH: 23 in WIDTH: 22 in DISTANCE FROM TOP OF BASE SHELF TO BOTTOM OF SHELF:56.00 in

POS	# FAC	UPC	NAME	CASES	CAPACITY	UNITS HIGH	Category
1	1	63598554890	WHITE CLAW VARIETY PACK 12/12 CAN	1.5	3	1	ABOVE PREMIUM
2	1	3354400013	CORONA REFRESCA VARIETY 12/12 CAN	1.5	3	1	ABOVE PREMIUM
3	1	7231123021	SOL 12/12 BTL	1.0	2	1	ABOVE PREMIUM

Segment # 2 : 2_1 DEPTH: 23 in WIDTH: 22 in DISTANCE FROM TOP OF BASE SHELF TO BOTTOM OF SHELF:68.00 in

POS	# FAC	UPC	NAME	CASES	CAPACITY	UNITS HIGH	Category
1	1	63848900029	DOGFISH HEAD 60 MINUTE IPA 6/12 BTL	0.8	3	1	ABOVE PREMIUM
2	1	3410051681	CAPE LINE VARIETY PACK 12/12 CAN	1.0	2	1	ABOVE PREMIUM
3	1	8769282102	ANGRY ORCHARD CRISP APPLE 6/12 BTL	0.8	3	1	ABOVE PREMIUM
4	1	8066095625	CORONA LIGHT 6/12 BTL	0.5	2	1	ABOVE PREMIUM

Segment # 3 : 3_5 DEPTH: 23 in WIDTH: 22 in DISTANCE FROM TOP OF BASE SHELF TO BOTTOM OF SHELF:0.00 in

POS	# FAC	UPC	NAME	CASES	CAPACITY	UNITS HIGH	Category
1	1	1820053030	BUD LIGHT 30/12 CAN	2.0	2	1	PREMIUM
2	1	1820053218	BUD LIGHT 18/12 CAN	4.0	4	1	PREMIUM
3	1	1820011218	BUD 18/12 CAN	3.0	3	1	PREMIUM

Segment # 3 : 3_4 DEPTH: 23 in WIDTH: 22 in DISTANCE FROM TOP OF BASE SHELF TO BOTTOM OF SHELF:23.00 in

POS	# FAC	UPC	NAME	CASES	CAPACITY	UNITS HIGH	Category
1	1	1820000769	BUD LIGHT 12/12 BTL	2.0	4	1	PREMIUM
2	1	1820053047	BUD LIGHT 12/12 CAN	2.0	4	1	PREMIUM
3	1	1820011308	BUD 18/12 BTL	2.0	2	1	PREMIUM

Segment # 3 : 3_3 DEPTH: 23 in WIDTH: 22 in DISTANCE FROM TOP OF BASE SHELF TO BOTTOM OF SHELF:44.00 in

POS	# FAC	UPC	NAME	CASES	CAPACITY	UNITS HIGH	Category
1	1	1820005990	MICHELOB ULTRA 12/12 BTL	1.0	2	1	ABOVE PREMIUM
2	1	1820000771	BUD 12/12 BTL	1.0	2	1	PREMIUM
3	1	1820011047	BUD 12/12 CAN	1.0	2	1	PREMIUM

Segment # 3 : 3_2 DEPTH: 23 in WIDTH: 22 in DISTANCE FROM TOP OF BASE SHELF TO BOTTOM OF SHELF:56.00 in

POS	# FAC	UPC	NAME	CASES	CAPACITY	UNITS HIGH	Category
1	1	85389700227	BON AND VIV SPIKED SELTZER VARIETY 12/12 CAN	1.5	3	1	ABOVE PREMIUM
2	1	1820020079	BUD LIGHT ORANGE 6/12 BTL	1.0	4	1	ABOVE PREMIUM
3	1	8992427896	YUENGLING LAGER 12/12 BTL	1.0	2	1	PREMIUM

Segment # 3 : 3_1 DEPTH: 23 in WIDTH: 22 in DISTANCE FROM TOP OF BASE SHELF TO BOTTOM OF SHELF:68.00 in



CVS # 07032 COLD

Address: 450 MAIN ST | City: ARMONK | State: NY

Chain/StoreNumer: CVS - EAST 07032

Reset Name: 2019 SPRING

Planogram Name: 7032_4_DOOR_COLD

POS #	FAC	UPC	NAME	CASES	CAPACITY	UNITS HIGH	Category
1	1	1820000833	BUD LIGHT 6/12 BTL	0.8	3	1	PREMIUM
2	1	1820000834	BUD 6/12 BTL	0.8	3	1	PREMIUM
3	1	3410057505	LITE 6/12 BTL	0.8	3	1	PREMIUM
4	1	7199030005	COORS LIGHT 6/12 BTL	0.8	3	1	PREMIUM

Segment # 4 : 3_5 - 1 DEPTH: 23 in WIDTH: 22 in DISTANCE FROM TOP OF BASE SHELF TO BOTTOM OF SHELF:0.00 in

POS #	FAC	UPC	NAME	CASES	CAPACITY	UNITS HIGH	Category
1	1	7199030030	COORS LIGHT 30/12 CAN	4.0	4	1	PREMIUM
2	1	7199030017	COORS LIGHT 18/12 CAN	4.0	4	1	PREMIUM
3	1	3410057340	LITE 18/12 CAN	3.0	3	1	PREMIUM

Segment # 4 : 3_4 - 1 DEPTH: 23 in WIDTH: 22 in DISTANCE FROM TOP OF BASE SHELF TO BOTTOM OF SHELF:23.00 in

POS #	FAC	UPC	NAME	CASES	CAPACITY	UNITS HIGH	Category
1	1	7199000048	COORS LIGHT 12/12 CAN	3.0	6	1	PREMIUM
2	1	3410057636	LITE 12/12 CAN	2.0	4	1	PREMIUM
3	1	3410057509	LITE 12/12 BTL	2.0	4	1	PREMIUM

Segment # 4 : 3_3 - 1 DEPTH: 23 in WIDTH: 22 in DISTANCE FROM TOP OF BASE SHELF TO BOTTOM OF SHELF:44.00 in

POS #	FAC	UPC	NAME	CASES	CAPACITY	UNITS HIGH	Category
1	1	7199030078	COORS LIGHT 18/12 BTL	1.0	1	1	PREMIUM
2	1	3410001509	HIGH LIFE 12/12 BTL	1.0	2	1	ECONOMY
3	1	7199048045	KEYSTONE LIGHT 15/12 CAN	1.0	1	1	ECONOMY

Segment # 4 : 3_2 - 1 DEPTH: 23 in WIDTH: 22 in DISTANCE FROM TOP OF BASE SHELF TO BOTTOM OF SHELF:56.00 in

POS #	FAC	UPC	NAME	CASES	CAPACITY	UNITS HIGH	Category
1	1	7199030069	COORS LIGHT 12/12 BTL	1.0	2	1	PREMIUM
2	1	1820020077	NATURAL LIGHT 15/12 CAN	0.5	1	1	ECONOMY
3	1	1820028443	NATURAL ICE 15/12 CAN	0.5	1	1	ECONOMY
4	1	3410000355	LITE 1/24 CAN	0.7	8	1	PREMIUM

Segment # 4 : 3_1 - 1 DEPTH: 23 in WIDTH: 22 in DISTANCE FROM TOP OF BASE SHELF TO BOTTOM OF SHELF:68.00 in

POS #	FAC	UPC	NAME	CASES	CAPACITY	UNITS HIGH	Category
1	1	61300874829	ARNOLD PALMER SPIKED HALF AND HALF 1/24 CAN	0.7	8	1	ABOVE PREMIUM
2	1	7089701331	FOSTERS 1/25.4 CAN	0.5	6	1	ABOVE PREMIUM
3	1	8066095643	CORONA 1/24 CAN	0.7	8	1	ABOVE PREMIUM
4	1	8066095721	MODELO ESPECIAL 1/24 CAN	0.6	7	1	ABOVE PREMIUM
5	1	7199030065	COORS LIGHT 1/24 CAN	0.7	8	1	PREMIUM
6	1	1820025001	BUD LIGHT 1/25 CAN	0.5	8	1	PREMIUM
7	1	1820025000	BUD 1/25 CAN	0.5	8	1	PREMIUM

REVERSE VIEW (ONLY IF NEEDED)





CVS # 07032 COLD

Reset Timing 2019 SPRING

Address: 450 MAIN ST | City: ARMONK | State: NY

REVERSE VIEW (ONLY IF NEEDED)

Segment:
1 of 4



Segment # 1 : 1_5 0.00 In

POS	UPC	NAME
1	75452700161	NEW BELGIUM FAT TIRE 12/ 12 CAN
2	8248812300	BECKS 12/ 12 BTL
3	8066095757	MODELO ESPECIAL 12/ 12 BTL

Segment # 1 : 1_4 23.00 In

POS	UPC	NAME
1	7289000020	HEINEKEN 12/ 12 CAN
2	7289000016	HEINEKEN 12/ 12 BTL
3	78615000014	STELLA ARTOIS 12/ 11.2 BTL

Segment # 1 : 1_3 44.00 In

POS	UPC	NAME
1	7199009516	BLUE MOON BELGIAN WHITE 12/ 12 BTL
2	7289000159	HEINEKEN LIGHT 12/ 12 BTL
3	78615000001	STELLA ARTOIS 6/ 11.2 BTL

Segment # 1 : 1_2 56.00 In

POS	UPC	NAME
1	81760601000	CAPTAIN LAWRENCE FRESHCHESTER 6/ 12 BTL
2	81760601020	CAPTAIN LAWRENCE IPA 6/ 12 BTL
3	7199009511	BLUE MOON BELGIAN WHITE 6/ 12 BTL
4	7289000011	HEINEKEN 6/ 12 BTL

Segment # 1 : 1_1 68.00 In

POS	UPC	NAME
1	8769210012	SAMUEL ADAMS BOSTON LAGER 6/ 12 BTL
2	87692300050	SAMUEL ADAMS SEASONAL 6/ 12 BTL (A)
3	75452700022	NEW BELGIUM FAT TIRE 6/ 12 BTL
4	3061300001	BROOKLYN LAGER 6/ 12 BTL



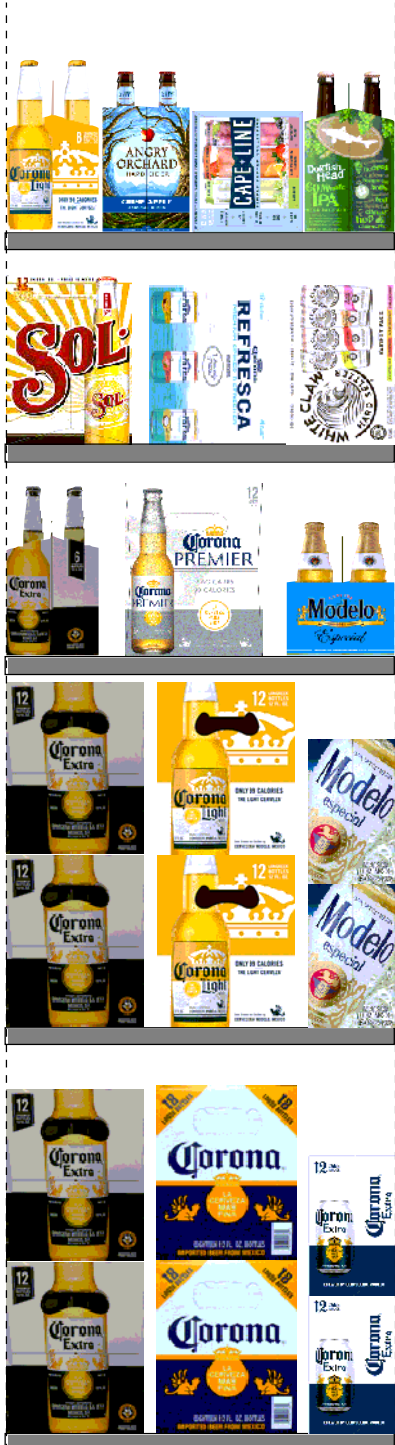
CVS # 07032 COLD

Reset Timing 2019 SPRING

Address: 450 MAIN ST | City: ARMONK | State: NY

REVERSE VIEW (ONLY IF NEEDED)

Segment:
2 of 4



Segment # 2 : 2_5 0.00 In

POS	UPC	NAME
1	8066095695	CORONA 12/ 12 CAN
2	8066095680	CORONA 18/ 12 BTL
3	8066095615	CORONA 12/ 12 BTL

Segment # 2 : 2_4 23.00 In

POS	UPC	NAME
1	8066095715	MODELO ESPECIAL 12/ 12 CAN
2	8066095675	CORONA LIGHT 12/ 12 BTL
3	8066095615	CORONA 12/ 12 BTL

Segment # 2 : 2_3 44.00 In

POS	UPC	NAME
1	8066095765	MODELO ESPECIAL 6/ 12 BTL
2	3354495042	CORONA PREMIER 12/ 12 BTL
3	8066095605	CORONA 6/ 12 BTL

Segment # 2 : 2_2 56.00 In

POS	UPC	NAME
1	63598554890	WHITE CLAW VARIETY PACK 12/ 12 CAN
2	3354400013	CORONA REFRESCA VARIETY 12/ 12 CAN
3	7231123021	SOL 12/ 12 BTL

Segment # 2 : 2_1 68.00 In

POS	UPC	NAME
1	63848900029	DOGFISH HEAD 60 MINUTE IPA 6/ 12 BTL
2	3410051681	CAPE LINE VARIETY PACK 12/ 12 CAN
3	8769282102	ANGRY ORCHARD CRISP APPLE 6/ 12 BTL
4	8066095625	CORONA LIGHT 6/ 12 BTL



CVS # 07032 COLD

Reset Timing 2019 SPRING

Address: 450 MAIN ST | City: ARMONK | State: NY

REVERSE VIEW (ONLY IF NEEDED)

Segment:
3 of 4



Segment # 3 : 3_5 0.00 In

POS	UPC	NAME
1	1820053030	BUD LIGHT 30/ 12 CAN
2	1820053218	BUD LIGHT 18/ 12 CAN
3	1820011218	BUD 18/ 12 CAN

Segment # 3 : 3_4 23.00 In

POS	UPC	NAME
1	1820000769	BUD LIGHT 12/ 12 BTL
2	1820053047	BUD LIGHT 12/ 12 CAN
3	1820011308	BUD 18/ 12 BTL

Segment # 3 : 3_3 44.00 In

POS	UPC	NAME
1	1820005990	MICHELOB ULTRA 12/ 12 BTL
2	1820000771	BUD 12/ 12 BTL
3	1820011047	BUD 12/ 12 CAN

Segment # 3 : 3_2 56.00 In

POS	UPC	NAME
1	85389700227	BON AND VIV SPIKED SELTZER VARIETY 12/ 12 CAN
2	1820020079	BUD LIGHT ORANGE 6/ 12 BTL
3	8992427896	YUENGLING LAGER 12/ 12 BTL

Segment # 3 : 3_1 68.00 In

POS	UPC	NAME
1	1820000833	BUD LIGHT 6/ 12 BTL
2	1820000834	BUD 6/ 12 BTL
3	3410057505	LITE 6/ 12 BTL
4	7199030005	COORS LIGHT 6/ 12 BTL



CVS # 07032 COLD

Reset Timing 2019 SPRING

Address: 450 MAIN ST | City: ARMONK | State: NY

REVERSE VIEW (ONLY IF NEEDED)

Segment:
4 of 4



Segment # 4 : 3_5 - 1 0.00 In

POS	UPC	NAME
1	7199030030	COORS LIGHT 30/ 12 CAN
2	7199030017	COORS LIGHT 18/ 12 CAN
3	3410057340	LITE 18/ 12 CAN

Segment # 4 : 3_4 - 1 23.00 In

POS	UPC	NAME
1	7199000048	COORS LIGHT 12/ 12 CAN
2	3410057636	LITE 12/ 12 CAN
3	3410057509	LITE 12/ 12 BTL

Segment # 4 : 3_3 - 1 44.00 In

POS	UPC	NAME
1	7199030078	COORS LIGHT 18/ 12 BTL
2	3410001509	HIGH LIFE 12/ 12 BTL
3	7199048045	KEYSTONE LIGHT 15/ 12 CAN

Segment # 4 : 3_2 - 1 56.00 In

POS	UPC	NAME
1	7199030069	COORS LIGHT 12/ 12 BTL
2	1820020077	NATURAL LIGHT 15/ 12 CAN
3	1820028443	NATURAL ICE 15/ 12 CAN
4	3410000355	LITE 1/ 24 CAN

Segment # 4 : 3_1 - 1 68.00 In

POS	UPC	NAME
1	61300874829	ARNOLD PALMER SPIKED HALF AND HALF 1/24 CAN
2	7089701331	FOSTERS 1/25.4 CAN
3	8066095643	CORONA 1/24 CAN
4	8066095721	MODELO ESPECIAL 1/24 CAN
5	7199030065	COORS LIGHT 1/24 CAN
6	1820025001	BUD LIGHT 1/25 CAN
7	1820025000	BUD 1/25 CAN



CVS # 07032 COLD

Address: 450 MAIN ST | City: ARMONK | State: NY

Chain/StoreNumer: CVS - EAST 07032

Reset Name: 2019 SPRING

Planogram Name: 7032_4_DOOR_COLD

CVS PHARMA... Store # 07032 H: 6 ft 10.00 in W: 7 ft 4.00 in D: 1 ft 11.00 in # of segments: 4

Name: 1_1 W:22.00 in D:23.00 in Avail Space: 2.23 in Ht Space: 13.00 in

ID	UPC	Barcode	Name	Category	HFacings	Orientation	Units
21956	8769210012	0 87692 10012 6	SAMUEL ADAMS BOSTON LAG...	ABOVE PREMIUM	1	Side	3
21995	8769230050	0 87692 30050 2	SAMUEL ADAMS SEASONAL 6/...	ABOVE PREMIUM	1	Side	3
13009	75452700022	7 54527 00022 6	NEW BELGIUM FAT TIRE 6/12 B...	ABOVE PREMIUM	1	Side	3
2616	3061300001	0 30613 00001 2	BROOKLYN LAGER 6/12 BTL	ABOVE PREMIUM	1	Side	2

Name: 1_2 W:22.00 in D:23.00 in Avail Space: 1.82 in Ht Space: 11.00 in

ID	UPC	Barcode	Name	Category	HFacings	Orientation	Units
15955	81760601000	8 17606 01000 1	CAPTAIN LAWRENCE FRESHC...	ABOVE PREMIUM	1	Side	3
15961	81760601020	8 17606 01020 9	CAPTAIN LAWRENCE IPA 6/12 ...	ABOVE PREMIUM	1	Side	3
10180	7199009511	0 71990 09511 6	BLUE MOON BELGIAN WHITE 6...	ABOVE PREMIUM	1	Side	3
11298	7289000011	0 72890 00011 8	HEINEKEN 6/12 BTL	ABOVE PREMIUM	1	Side	3

Name: 1_3 W:22.00 in D:23.00 in Avail Space: 2.31 in Ht Space: 11.00 in

ID	UPC	Barcode	Name	Category	HFacings	Orientation	Units
10183	7199009516	0 71990 09516 1	BLUE MOON BELGIAN WHITE 1...	ABOVE PREMIUM	1	Side	2
11342	7289000159	0 72890 00159 7	HEINEKEN LIGHT 12/12 BTL	ABOVE PREMIUM	1	Side	2
14089	78615000001	7 86150 00001 4	STELLA ARTOIS 6/11.2 BTL	ABOVE PREMIUM	1	Side	3

Name: 1_4 W:22.00 in D:23.00 in Avail Space: 2.23 in Ht Space: 20.00 in

ID	UPC	Barcode	Name	Category	HFacings	Orientation	Units
11301	7289000020	0 72890 00020 0	HEINEKEN 12/12 CAN	ABOVE PREMIUM	1	Side	4
11300	7289000016	0 72890 00016 3	HEINEKEN 12/12 BTL	ABOVE PREMIUM	1	Side	4
14094	78615000014	7 86150 00014 4	STELLA ARTOIS 12/11.2 BTL	ABOVE PREMIUM	1	Side	4



CVS # 07032 COLD

Address: 450 MAIN ST | City: ARMONK | State: NY

Chain/StoreNumer: CVS - EAST 07032

Reset Name: 2019 SPRING

Planogram Name: 7032_4_DOOR_COLD

Name: 1_5		W:22.00 in	D:23.00 in	Avail Space: 0.61 in		Ht Space: 22.00 in	
ID	UPC	Barcode	Name	Category	HFacings	Orientation	Units
13037	75452700161	7 54527 00161 2	NEW BELGIUM FAT TIRE 12/12 ...	ABOVE PREMIUM	1	Side	4
16691	8248812300	0 82488 12300 6	BECKS 12/12 BTL	ABOVE PREMIUM	1	Side	4
15436	8066095757	0 80660 95757 9	MODELO ESPECIAL 12/12 BTL	ABOVE PREMIUM	1	Side	4

Name: 2_1		W:22.00 in	D:23.00 in	Avail Space: 0.41 in		Ht Space: 13.00 in	
ID	UPC	Barcode	Name	Category	HFacings	Orientation	Units
6748	63848900029	6 38489 00029 9	DOGFISH HEAD 60 MINUTE IPA...	ABOVE PREMIUM	1	Side	3
86788	3410051681	0 34100 51681 9	CAPE LINE VARIETY PACK 12/1...	ABOVE PREMIUM	1	Side 90	2
22090	8769282102	0 87692 82102 1	ANGRY ORCHARD CRISP APP...	ABOVE PREMIUM	1	Side	3
15408	8066095625	0 80660 95625 1	CORONA LIGHT 6/12 BTL	ABOVE PREMIUM	1	Side	2

Name: 2_2		W:22.00 in	D:23.00 in	Avail Space: 2.01 in		Ht Space: 11.00 in	
ID	UPC	Barcode	Name	Category	HFacings	Orientation	Units
45151	63598554890	6 35985 54890 4	WHITE CLAW VARIETY PACK 1...	ABOVE PREMIUM	1	Front 90	3
86777	3354400013	0 33544 00013 7	CORONA REFRESCA VARIETY...	ABOVE PREMIUM	1	Top 90	3
10790	7231123021	0 72311 23021 6	SOL 12/12 BTL	ABOVE PREMIUM	1	Side	2

Name: 2_3		W:22.00 in	D:23.00 in	Avail Space: 2.78 in		Ht Space: 11.00 in	
ID	UPC	Barcode	Name	Category	HFacings	Orientation	Units
15442	8066095765	0 80660 95765 4	MODELO ESPECIAL 6/12 BTL	ABOVE PREMIUM	1	Side	2
44952	3354495042	0 33544 95042 5	CORONA PREMIER 12/12 BTL	ABOVE PREMIUM	1	Side	2
15400	8066095605	0 80660 95605 3	CORONA 6/12 BTL	ABOVE PREMIUM	1	Side	2

Name: 2_4		W:22.00 in	D:23.00 in	Avail Space: 1.57 in		Ht Space: 20.00 in	
ID	UPC	Barcode	Name	Category	HFacings	Orientation	Units



CVS # 07032 COLD

Address: 450 MAIN ST | City: ARMONK | State: NY

Chain/StoreNumer: CVS - EAST 07032

Reset Name: 2019 SPRING

Planogram Name: 7032_4_DOOR_COLD

15429	8066095715		MODELO ESPECIAL 12/12 CAN	ABOVE PREMIUM	1	Side	4
15416	8066095675		CORONA LIGHT 12/12 BTL	ABOVE PREMIUM	1	Side	4
15403	8066095615		CORONA 12/12 BTL	ABOVE PREMIUM	1	Side	4

Name: 2_5 W:22.00 in D:23.00 in Avail Space: 1.38 in Ht Space: 22.00 in

ID	UPC	Barcode	Name	Category	HFacings	Orientation	Units
15426	8066095695		CORONA 12/12 CAN	ABOVE PREMIUM	1	Side	4
15417	8066095680		CORONA 18/12 BTL	ABOVE PREMIUM	1	Side	2
15403	8066095615		CORONA 12/12 BTL	ABOVE PREMIUM	1	Side	4

Name: 3_1 W:22.00 in D:23.00 in Avail Space: 2.11 in Ht Space: 13.00 in

ID	UPC	Barcode	Name	Category	HFacings	Orientation	Units
1083	182000833		BUD LIGHT 6/12 BTL	PREMIUM	1	Side	3
1084	182000834		BUD 6/12 BTL	PREMIUM	1	Side	3
3564	3410057505		LITE 6/12 BTL	PREMIUM	1	Side	3
10322	7199030005		COORS LIGHT 6/12 BTL	PREMIUM	1	Side	3

Name: 3_2 W:22.00 in D:23.00 in Avail Space: 1.21 in Ht Space: 11.00 in

ID	UPC	Barcode	Name	Category	HFacings	Orientation	Units
19178	85389700227		BON AND VIV SPIKED SELTZE...	ABOVE PREMIUM	1	Front 90	3
67176	1820020079		BUD LIGHT ORANGE 6/12 BTL	ABOVE PREMIUM	1	Front	4
23902	8992427896		YUENGLING LAGER 12/12 BTL	PREMIUM	1	Side	2

Name: 3_3 W:22.00 in D:23.00 in Avail Space: 2.38 in Ht Space: 11.00 in

ID	UPC	Barcode	Name	Category	HFacings	Orientation	Units
1228	1820005990		MICHELOB ULTRA 12/12 BTL	ABOVE PREMIUM	1	Side	2



CVS # 07032 COLD

Address: 450 MAIN ST | City: ARMONK | State: NY

Chain/StoreNumer: CVS - EAST 07032

Reset Name: 2019 SPRING

Planogram Name: 7032_4_DOOR_COLD

1058	182000771		BUD 12/12 BTL	PREMIUM	1	Side	2
1297	1820011047		BUD 12/12 CAN	PREMIUM	1	Side	2

Name: 3_4 W:22.00 in D:23.00 in Avail Space: 2.35 in Ht Space: 20.00 in

ID	UPC	Barcode	Name	Category	HFacings	Orientation	Units
1056	182000769		BUD LIGHT 12/12 BTL	PREMIUM	1	Side	4
1659	1820053047		BUD LIGHT 12/12 CAN	PREMIUM	1	Side	4
1310	1820011308		BUD 18/12 BTL	PREMIUM	1	Side	2

Name: 3_5 W:22.00 in D:23.00 in Avail Space: 1.25 in Ht Space: 22.00 in

ID	UPC	Barcode	Name	Category	HFacings	Orientation	Units
1656	1820053030		BUD LIGHT 30/12 CAN	PREMIUM	1	Side	2
1667	1820053218		BUD LIGHT 18/12 CAN	PREMIUM	1	Side 90	4
1307	1820011218		BUD 18/12 CAN	PREMIUM	1	Top 90	3

Name: 3_1 - 1 W:22.00 in D:23.00 in Avail Space: 1.49 in Ht Space: 13.00 in

ID	UPC	Barcode	Name	Category	HFacings	Orientation	Units
66064	61300874829		ARNOLD PALMER SPIKED HAL...	ABOVE PREMIUM	1	Front	8
9452	7089701331		FOSTERS 1/25.4 CAN	ABOVE PREMIUM	1	Front	6
15415	8066095643		CORONA 1/24 CAN	ABOVE PREMIUM	1	Front	8
15431	8066095721		MODELO ESPECIAL 1/24 CAN	ABOVE PREMIUM	1	Front	7
10346	7199030065		COORS LIGHT 1/24 CAN	PREMIUM	1	Front	8
1521	1820025001		BUD LIGHT 1/25 CAN	PREMIUM	1	Front	8
1520	1820025000		BUD 1/25 CAN	PREMIUM	1	Front	8



CVS # 07032 COLD

Address: 450 MAIN ST | City: ARMONK | State: NY

Chain/StoreNumer: CVS - EAST 07032

Reset Name: 2019 SPRING

Planogram Name: 7032_4_DOOR_COLD

Name: 3_2 - 1		W:22.00 in	D:23.00 in	Avail Space: 1.93 in		Ht Space: 11.00 in	
ID	UPC	Barcode	Name	Category	HFacings	Orientation	Units
10348	7199030069		COORS LIGHT 12/12 BTL	PREMIUM	1	Side	2
61975	1820020077		NATURAL LIGHT 15/12 CAN	ECONOMY	1	Side	1
66288	1820028443		NATURAL ICE 15/12 CAN	ECONOMY	1	Side	1
2968	341000355		LITE 1/24 CAN	PREMIUM	1	Front	8

Name: 3_3 - 1		W:22.00 in	D:23.00 in	Avail Space: 1.67 in		Ht Space: 11.00 in	
ID	UPC	Barcode	Name	Category	HFacings	Orientation	Units
10352	7199030078		COORS LIGHT 18/12 BTL	PREMIUM	1	Side	1
3198	3410001509		HIGH LIFE 12/12 BTL	ECONOMY	1	Side	2
45405	7199048045		KEYSTONE LIGHT 15/12 CAN	ECONOMY	1	Side	1

Name: 3_4 - 1		W:22.00 in	D:23.00 in	Avail Space: 2.28 in		Ht Space: 20.00 in	
ID	UPC	Barcode	Name	Category	HFacings	Orientation	Units
10164	7199000048		COORS LIGHT 12/12 CAN	PREMIUM	1	Side 90	6
3579	3410057636		LITE 12/12 CAN	PREMIUM	1	Side	4
3565	3410057509		LITE 12/12 BTL	PREMIUM	1	Side	4

Name: 3_5 - 1		W:22.00 in	D:23.00 in	Avail Space: 2.07 in		Ht Space: 22.00 in	
ID	UPC	Barcode	Name	Category	HFacings	Orientation	Units
10336	7199030030		COORS LIGHT 30/12 CAN	PREMIUM	1	Side	4
10329	7199030017		COORS LIGHT 18/12 CAN	PREMIUM	1	Side 90	4
3552	3410057340		LITE 18/12 CAN	PREMIUM	1	Top 90	3



CVS # 07032 WARM

Reset Timing 2019 SPRING

Address: 450 MAIN ST | City: ARMONK | State: NY





CVS # 07032 WARM

Address: 450 MAIN ST | City: ARMONK | State: NY

Chain/StoreNumer: CVS - EAST 07032

Reset Name: 2019 SPRING

Planogram Name: 7032_12ft_OPEN_WARM

Segment # 2 : 1_4 DEPTH: 19 in WIDTH: 192 in DISTANCE FROM TOP OF BASE SHELF TO BOTTOM OF SHELF:0.00 in

POS #	FAC	UPC	NAME	CASES	CAPACITY	UNITS HIGH	Category
1	1	75452700161	NEW BELGIUM FAT TIRE 12/12 CAN	4.0	8	1	ABOVE PREMIUM
2	1	7199009516	BLUE MOON BELGIAN WHITE 12/12 BTL	2.0	4	1	ABOVE PREMIUM
3	1	63598512998	MIKES HARD VARIETY PACK 12/11.2 BTL	2.0	4	1	ABOVE PREMIUM
4	1	78615000014	STELLA ARTOIS 12/11.2 BTL	2.0	4	1	ABOVE PREMIUM
5	1	7289000159	HEINEKEN LIGHT 12/12 BTL	2.0	4	1	ABOVE PREMIUM
6	1	7289000016	HEINEKEN 12/12 BTL	2.0	4	1	ABOVE PREMIUM
1	1	8248812300	BECKS 12/12 BTL	2.0	4	1	ABOVE PREMIUM
2	1	8066095680	CORONA 18/12 BTL	2.0	2	1	ABOVE PREMIUM
3	3	8066095615	CORONA 12/12 BTL	6.0	12	3	ABOVE PREMIUM
4	1	8066095695	CORONA 12/12 CAN	4.0	8	1	ABOVE PREMIUM
1	2	8066095757	MODELO ESPECIAL 12/12 BTL	4.0	8	2	ABOVE PREMIUM
2	1	1820005990	MICHELOB ULTRA 12/12 BTL	3.0	6	1	ABOVE PREMIUM
3	1	1820053030	BUD LIGHT 30/12 CAN	4.0	4	1	PREMIUM
1	1	1820053218	BUD LIGHT 18/12 CAN	4.0	4	1	PREMIUM
2	1	1820011218	BUD 18/12 CAN	4.0	4	1	PREMIUM
3	1	7199030030	COORS LIGHT 30/12 CAN	4.0	4	1	PREMIUM
4	1	7199030017	COORS LIGHT 18/12 CAN	3.0	3	1	PREMIUM
5	1	7199030078	COORS LIGHT 18/12 BTL	2.0	2	1	PREMIUM

Segment # 2 : 1_3 DEPTH: 19 in WIDTH: 192 in DISTANCE FROM TOP OF BASE SHELF TO BOTTOM OF SHELF:22.00 in

POS #	FAC	UPC	NAME	CASES	CAPACITY	UNITS HIGH	Category
1	1	75452700022	NEW BELGIUM FAT TIRE 6/12 BTL	0.8	3	1	ABOVE PREMIUM
2	1	7199009511	BLUE MOON BELGIAN WHITE 6/12 BTL	0.8	3	1	ABOVE PREMIUM
3	1	7199009584	BLUE MOON CINNAMON HORCHATA 6/12 BTL	0.8	3	1	ABOVE PREMIUM
4	1	64286090024	FOUNDERS ALL DAY SESSION IPA 15/12 CAN	2.0	4	1	ABOVE PREMIUM
5	1	60690500830	ITHACA FLOWER POWER 6/12 BTL	0.8	3	1	ABOVE PREMIUM
1	1	7167007106	SARANAC 12 BEERS 12/12 BTL	1.0	2	1	ABOVE PREMIUM
2	1	7289000188	HEINEKEN LIGHT 12/12 CAN	1.0	2	1	ABOVE PREMIUM
3	1	7289000020	HEINEKEN 12/12 CAN	1.0	2	1	ABOVE PREMIUM
4	2	3354495042	CORONA PREMIER 12/12 BTL	1.0	2	2	ABOVE PREMIUM
5	1	8066095675	CORONA LIGHT 12/12 BTL	1.0	2	1	ABOVE PREMIUM
1	1	8066095621	CORONA LIGHT 12/12 CAN	1.0	2	1	ABOVE PREMIUM
2	1	8066095715	MODELO ESPECIAL 12/12 CAN	2.0	4	1	ABOVE PREMIUM
3	1	1820096721	MICHELOB ULTRA 18/12 CAN	1.0	1	1	ABOVE PREMIUM
4	1	1820053308	BUD LIGHT 18/12 BTL	2.0	2	1	PREMIUM
5	1	8992427891	YUENGLING LAGER 6/12 BTL	0.8	3	1	PREMIUM
1	1	8992427896	YUENGLING LAGER 12/12 BTL	1.0	2	1	PREMIUM
2	2	3410057340	LITE 18/12 CAN	4.0	4	2	PREMIUM
3	1	3410057256	LITE 18/12 BTL	2.0	2	1	PREMIUM
4	1	2210000170	PABST 12/12 CAN	1.0	2	1	ECONOMY

Segment # 2 : 1_2 DEPTH: 19 in WIDTH: 192 in DISTANCE FROM TOP OF BASE SHELF TO BOTTOM OF SHELF:35.00 in

POS #	FAC	UPC	NAME	CASES	CAPACITY	UNITS HIGH	Category
1	1	8769210012	SAMUEL ADAMS BOSTON LAGER 6/12 BTL	0.8	3	1	ABOVE PREMIUM
2	1	8769201103	SAMUEL ADAMS SEASONAL 12/12 BTL (A)	1.0	2	1	ABOVE PREMIUM
3	1	3061300053	BROOKLYN SEASONAL 6/12 BTL	0.8	3	1	ABOVE PREMIUM
4	1	3061300001	BROOKLYN LAGER 6/12 BTL	0.8	3	1	ABOVE PREMIUM
5	1	73692011132	GOOSE ISLAND IPA 6/12 BTL	0.8	3	1	ABOVE PREMIUM
6	1	78615000001	STELLA ARTOIS 6/11.2 BTL	0.8	3	1	ABOVE PREMIUM
1	1	7289000011	HEINEKEN 6/12 BTL	0.8	3	1	ABOVE PREMIUM



CVS # 07032 WARM

Address: 450 MAIN ST | City: ARMONK | State: NY

Chain/StoreNumer: CVS - EAST 07032

Reset Name: 2019 SPRING

Planogram Name: 7032_12ft_OPEN_WARM

2	2	8066095605	CORONA 6/12 BTL	1.5	6	2	ABOVE PREMIUM
3	1	3354495041	CORONA PREMIER 6/12 BTL	0.8	3	1	ABOVE PREMIUM
4	1	7231123021	SOL 12/12 BTL	1.0	2	1	ABOVE PREMIUM
5	1	8982690033	TECATE 12/12 CAN	1.0	2	1	ABOVE PREMIUM
1	1	7231163012	DOS EQUIS 6/12 BTL	0.5	2	1	ABOVE PREMIUM
2	1	8066095765	MODELO ESPECIAL 6/12 BTL	0.5	2	1	ABOVE PREMIUM
3	1	8066095787	MODELO NEGRA 12/12 BTL	1.0	2	1	ABOVE PREMIUM
4	1	1820020083	MICHELOB ULTRA PURE GOLD 12/12 BTL	1.0	2	1	ABOVE PREMIUM
5	1	1820000769	BUD LIGHT 12/12 BTL	1.0	2	1	PREMIUM
1	1	1820000771	BUD 12/12 BTL	1.0	2	1	PREMIUM
2	1	7199030069	COORS LIGHT 12/12 BTL	1.0	2	1	PREMIUM
3	1	3410057509	LITE 12/12 BTL	1.0	2	1	PREMIUM
4	1	3410001509	HIGH LIFE 12/12 BTL	1.0	2	1	ECONOMY
5	1	1820020077	NATURAL LIGHT 15/12 CAN	1.0	2	1	ECONOMY

Segment # 2 : 1_1 DEPTH: 19 in WIDTH: 192 in DISTANCE FROM TOP OF BASE SHELF TO BOTTOM OF SHELF:48.00 in

POS	# FAC	UPC	NAME	CASES	CAPACITY	UNITS HIGH	Category
1	1	63848900029	DOGFISH HEAD 60 MINUTE IPA 6/12 BTL	0.8	3	1	ABOVE PREMIUM
2	1	81760601000	CAPTAIN LAWRENCE FRESHCHESTER 6/12 BTL	0.8	3	1	ABOVE PREMIUM
3	1	81760601020	CAPTAIN LAWRENCE IPA 6/12 BTL	0.8	3	1	ABOVE PREMIUM
4	1	68174511112	BLUE POINT TOASTED LAGER 6/12 BTL	0.8	3	1	ABOVE PREMIUM
5	1	1820013986	SHOCK TOP BELGIAN WHITE 6/12 BTL	0.8	3	1	ABOVE PREMIUM
6	1	63598510062	MIKES HARD LEMONADE 6/11.2 BTL	0.8	3	1	ABOVE PREMIUM
1	1	8769282102	ANGRY ORCHARD CRISP APPLE 6/12 BTL	0.8	3	1	ABOVE PREMIUM
2	1	8769200660	ANGRY ORCHARD ROSE 6/12 BTL	0.8	3	1	ABOVE PREMIUM
3	1	8834510151	STRONGBOW GOLD 6/11.2 BTL	1.0	4	1	ABOVE PREMIUM
4	1	63598554890	WHITE CLAW VARIETY PACK 12/12 CAN	1.5	3	1	ABOVE PREMIUM
5	1	8769200424	TRULY VARIETY PACK 12/12 CAN	1.0	2	1	ABOVE PREMIUM
6	1	7031001542	PURA STILL BLACKBERRY 6/12 BTL	0.8	3	1	ABOVE PREMIUM
7	1	3410000342	REDD'S WICKED 12/10 CAN	1.0	2	1	ABOVE PREMIUM
1	1	8066095785	MODELO NEGRA 6/12 BTL	0.8	3	1	ABOVE PREMIUM
2	1	1820005989	MICHELOB ULTRA 6/12 BTL	0.8	3	1	ABOVE PREMIUM
3	1	1820000833	BUD LIGHT 6/12 BTL	0.8	3	1	PREMIUM
4	1	1820053047	BUD LIGHT 12/12 CAN	1.0	2	1	PREMIUM
5	1	1820000834	BUD 6/12 BTL	0.8	3	1	PREMIUM
6	1	1820011047	BUD 12/12 CAN	1.0	2	1	PREMIUM
1	1	7199030005	COORS LIGHT 6/12 BTL	0.8	3	1	PREMIUM
2	1	7199000048	COORS LIGHT 12/12 CAN	1.0	2	1	PREMIUM
3	1	3410057505	LITE 6/12 BTL	0.8	3	1	PREMIUM
4	1	3410057636	LITE 12/12 CAN	1.0	2	1	PREMIUM
5	1	3410001636	HIGH LIFE 12/12 CAN	1.0	2	1	ECONOMY
6	1	1820028443	NATURAL ICE 15/12 CAN	1.0	2	1	ECONOMY



CVS # 07032 WARM

Reset Timing 2019 SPRING

Address: 450 MAIN ST | City: ARMONK | State: NY

REVERSE VIEW (ONLY IF NEEDED)





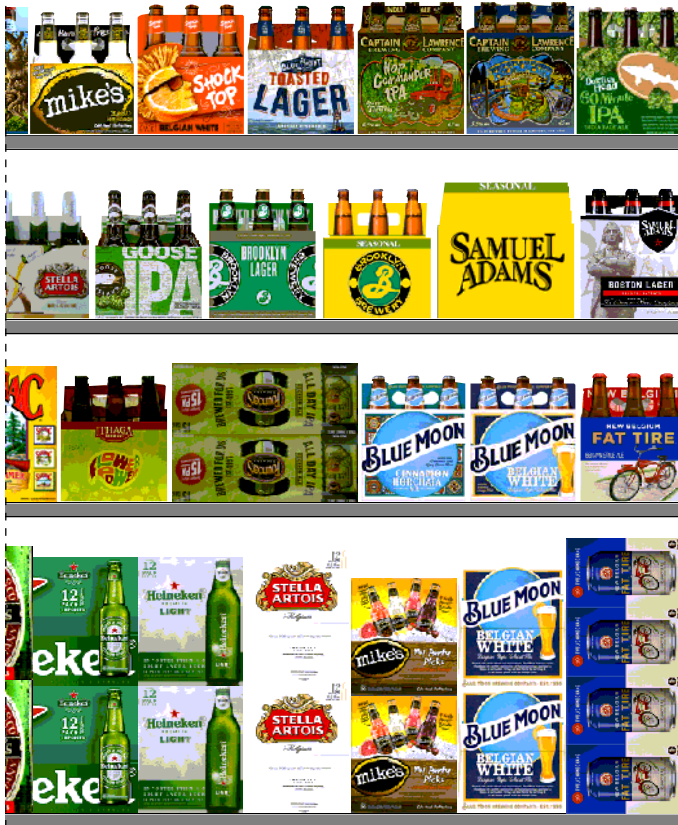
CVS # 07032 WARM

Reset Timing 2019 SPRING

Address: 450 MAIN ST | City: ARMONK | State: NY

REVERSE VIEW (ONLY IF NEEDED)

Segment:
1 of 4



Segment # 2 : 1_4 0.00 In

POS	UPC	NAME
1	75452700161	NEW BELGIUM FAT TIRE 12/ 12 CAN
2	7199009516	BLUE MOON BELGIAN WHITE 12/ 12 BTL
3	63598512998	MIKES HARD VARIETY PACK 12/ 11.2 BTL
4	78615000014	STELLA ARTOIS 12/ 11.2 BTL
5	7289000159	HEINEKEN LIGHT 12/ 12 BTL
6	7289000016	HEINEKEN 12/ 12 BTL

Segment # 2 : 1_3 22.00 In

POS	UPC	NAME
1	75452700022	NEW BELGIUM FAT TIRE 6/ 12 BTL
2	7199009511	BLUE MOON BELGIAN WHITE 6/ 12 BTL
3	7199009584	BLUE MOON CINNAMON HORCHATA 6/ 12 BTL
4	64286090024	FOUNDERS ALL DAY SESSION IPA 15/ 12 CAN
5	60690500830	ITHACA FLOWER POWER 6/ 12 BTL

Segment # 2 : 1_2 35.00 In

POS	UPC	NAME
1	8769210012	SAMUEL ADAMS BOSTON LAGER 6/ 12 BTL
2	8769201103	SAMUEL ADAMS SEASONAL 12/ 12 BTL (A)
3	3061300053	BROOKLYN SEASONAL 6/ 12 BTL
4	3061300001	BROOKLYN LAGER 6/ 12 BTL
5	73692011132	GOOSE ISLAND IPA 6/ 12 BTL
6	78615000001	STELLA ARTOIS 6/ 11.2 BTL

Segment # 2 : 1_1 48.00 In

POS	UPC	NAME
1	63848900029	DOGFISH HEAD 60 MINUTE IPA 6/ 12 BTL
2	81760601000	CAPTAIN LAWRENCE FRESHCHESTER 6/ 12 BTL
3	81760601020	CAPTAIN LAWRENCE IPA 6/ 12 BTL
4	68174511112	BLUE POINT TOASTED LAGER 6/ 12 BTL
5	1820013986	SHOCK TOP BELGIAN WHITE 6/ 12 BTL
6	63598510062	MIKES HARD LEMONADE 6/ 11.2 BTL



CVS # 07032 WARM

Reset Timing 2019 SPRING

Address: 450 MAIN ST | City: ARMONK | State: NY

REVERSE VIEW (ONLY IF NEEDED)

Segment:
2 of 4



Segment # 2 : 1_4 0.00 In

POS	UPC	NAME
1	8248812300	BECKS 12/ 12 BTL
2	8066095680	CORONA 18/ 12 BTL
3	8066095615	CORONA 12/ 12 BTL
4	8066095695	CORONA 12/ 12 CAN

Segment # 2 : 1_3 22.00 In

POS	UPC	NAME
1	7167007106	SARANAC 12 BEERS 12/ 12 BTL
2	7289000188	HEINEKEN LIGHT 12/ 12 CAN
3	7289000020	HEINEKEN 12/ 12 CAN
4	3354495042	CORONA PREMIER 12/ 12 BTL
5	8066095675	CORONA LIGHT 12/ 12 BTL

Segment # 2 : 1_2 35.00 In

POS	UPC	NAME
1	7289000011	HEINEKEN 6/ 12 BTL
2	8066095605	CORONA 6/ 12 BTL
3	3354495041	CORONA PREMIER 6/ 12 BTL
4	7231123021	SOL 12/ 12 BTL
5	8982690033	TECATE 12/ 12 CAN

Segment # 2 : 1_1 48.00 In

POS	UPC	NAME
1	8769282102	ANGRY ORCHARD CRISP APPLE 6/ 12 BTL
2	8769200660	ANGRY ORCHARD ROSE 6/ 12 BTL
3	8834510151	STRONGBOW GOLD 6/ 11.2 BTL
4	63598554890	WHITE CLAW VARIETY PACK 12/ 12 CAN
5	8769200424	TRULY VARIETY PACK 12/ 12 CAN
6	7031001542	PURA STILL BLACKBERRY 6/ 12 BTL
7	3410000342	REDD'S WICKED 12/ 10 CAN



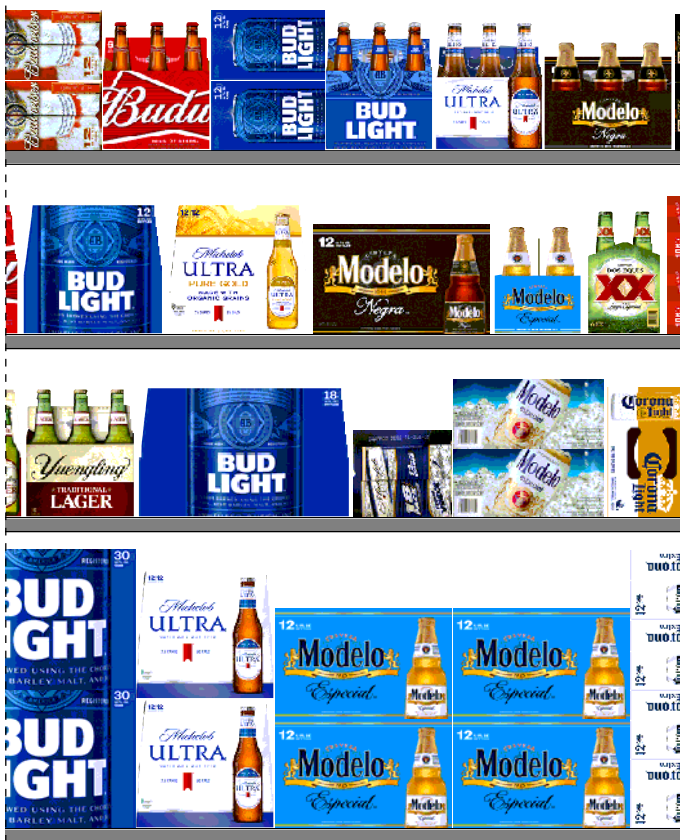
CVS # 07032 WARM

Reset Timing 2019 SPRING

Address: 450 MAIN ST | City: ARMONK | State: NY

REVERSE VIEW (ONLY IF NEEDED)

Segment:
3 of 4



Segment # 2 : 1_4 0.00 In

POS	UPC	NAME
1	8066095757	MODELO ESPECIAL 12/ 12 BTL
2	1820005990	MICHELOB ULTRA 12/ 12 BTL
3	1820053030	BUD LIGHT 30/ 12 CAN

Segment # 2 : 1_3 22.00 In

POS	UPC	NAME
1	8066095621	CORONA LIGHT 12/ 12 CAN
2	8066095715	MODELO ESPECIAL 12/ 12 BTL
3	1820096721	MICHELOB ULTRA 18/ 12 CAN
4	1820053308	BUD LIGHT 18/ 12 BTL
5	8992427891	YUENGLING LAGER 6/ 12 BTL

Segment # 2 : 1_2 35.00 In

POS	UPC	NAME
1	7231163012	DOS EQUIUS 6/ 12 BTL
2	8066095765	MODELO ESPECIAL 6/ 12 BTL
3	8066095787	MODELO NEGRA 12/ 12 BTL
4	1820020083	MICHELOB ULTRA PURE GOLD 12/ 12 BTL
5	1820000769	BUD LIGHT 12/ 12 BTL

Segment # 2 : 1_1 48.00 In

POS	UPC	NAME
1	8066095785	MODELO NEGRA 6/ 12 BTL
2	1820005989	MICHELOB ULTRA 6/ 12 BTL
3	1820000833	BUD LIGHT 6/ 12 BTL
4	1820053047	BUD LIGHT 12/ 12 CAN
5	1820000834	BUD 6/ 12 BTL
6	1820011047	BUD 12/ 12 CAN



CVS # 07032 WARM

Reset Timing 2019 SPRING

Address: 450 MAIN ST | City: ARMONK | State: NY

REVERSE VIEW (ONLY IF NEEDED)

Segment:
4 of 4



Segment # 2 : 1_4 0.00 In

POS	UPC	NAME
1	1820053218	BUD LIGHT 18/ 12 CAN
2	1820011218	BUD 18/ 12 CAN
3	7199030030	COORS LIGHT 30/ 12 CAN
4	7199030017	COORS LIGHT 18/ 12 CAN
5	7199030078	COORS LIGHT 18/ 12 BTL

Segment # 2 : 1_3 22.00 In

POS	UPC	NAME
1	8992427896	YUENGLING LAGER 12/ 12 BTL
2	3410057340	LITE 18/ 12 CAN
3	3410057256	LITE 18/ 12 BTL
4	2210000170	PABST 12/ 12 CAN

Segment # 2 : 1_2 35.00 In

POS	UPC	NAME
1	1820000771	BUD 12/ 12 BTL
2	7199030069	COORS LIGHT 12/ 12 BTL
3	3410057509	LITE 12/ 12 BTL
4	3410001509	HIGH LIFE 12/ 12 BTL
5	1820020077	NATURAL LIGHT 15/ 12 CAN

Segment # 2 : 1_1 48.00 In

POS	UPC	NAME
1	7199030005	COORS LIGHT 6/ 12 BTL
2	7199000048	COORS LIGHT 12/ 12 CAN
3	3410057505	LITE 6/ 12 BTL
4	3410057636	LITE 12/ 12 CAN
5	3410001636	HIGH LIFE 12/ 12 CAN
6	1820028443	NATURAL ICE 15/ 12 CAN



CVS # 07032 WARM

Address: 450 MAIN ST | City: ARMONK | State: NY

Chain/StoreNumer: CVS - EAST 07032

Reset Name: 2019 SPRING

Planogram Name: 7032_12ft_OPEN_WARM

CVS PHARMA... Store # 07032 H: 5 ft W: 16 ft D: 2 ft # of segments: 4

Name: 1_1 W:192.00 in D:19.00 in Avail Space: 2.71 in Ht Space: 11.00 in

ID	UPC	Barcode	Name	Category	HFacings	Orientation	Units
6748	63848900029	6 38489 00029 9	DOGFISH HEAD 60 MINUTE IPA...	ABOVE PREMIUM	1	Front	3
15955	81760601000	8 17606 01000 1	CAPTAIN LAWRENCE FRESHC...	ABOVE PREMIUM	1	Front	3
15961	81760601020	8 17606 01020 9	CAPTAIN LAWRENCE IPA 6/12 ...	ABOVE PREMIUM	1	Front	3
7902	68174511112	6 81745 11112 3	BLUE POINT TOASTED LAGER...	ABOVE PREMIUM	1	Front	3
1345	1820013986	0 18200 13986 4	SHOCK TOP BELGIAN WHITE 6...	ABOVE PREMIUM	1	Front	3
6413	63598510062	6 35985 10062 1	MIKES HARD LEMONADE 6/11....	ABOVE PREMIUM	1	Front	3
22090	8769282102	0 87692 82102 1	ANGRY ORCHARD CRISP APP...	ABOVE PREMIUM	1	Front	3
65019	8769200660	0 87692 00660 2	ANGRY ORCHARD ROSE 6/12 ...	ABOVE PREMIUM	1	Front	3
22457	8834510151	0 88345 10151 4	STRONGBOW GOLD 6/11.2 BTL	ABOVE PREMIUM	1	Front	4
45151	63598554890	6 35985 54890 4	WHITE CLAW VARIETY PACK 1...	ABOVE PREMIUM	1	Top 90	3
43031	8769200424	0 87692 00424 0	TRULY VARIETY PACK 12/12 C...	ABOVE PREMIUM	1	Front 90	2
89181	7031001542	0 70310 01542 1	PURA STILL BLACKBERRY 6/12...	ABOVE PREMIUM	1	Front	3
2951	3410000342	0 34100 00342 5	REDD'S WICKED 12/10 CAN	ABOVE PREMIUM	1	Side 90	2
15448	8066095785	0 80660 95785 2	MODELO NEGRA 6/12 BTL	ABOVE PREMIUM	1	Front	3
1227	1820005989	0 18200 05989 6	MICHELOB ULTRA 6/12 BTL	ABOVE PREMIUM	1	Front	3
1083	1820000833	0 18200 00833 7	BUD LIGHT 6/12 BTL	PREMIUM	1	Front	3



CVS # 07032 WARM

Address: 450 MAIN ST | City: ARMONK | State: NY

Chain/StoreNumer: CVS - EAST 07032

Reset Name: 2019 SPRING

Planogram Name: 7032_12ft_OPEN_WARM

1659	1820053047		BUD LIGHT 12/12 CAN	PREMIUM	1	Side 90	2
1084	1820000834		BUD 6/12 BTL	PREMIUM	1	Front	3
1297	1820011047		BUD 12/12 CAN	PREMIUM	1	Side 90	2
10322	7199030005		COORS LIGHT 6/12 BTL	PREMIUM	1	Front	3
10164	7199000048		COORS LIGHT 12/12 CAN	PREMIUM	1	Side 90	2
3564	3410057505		LITE 6/12 BTL	PREMIUM	1	Front	3
3579	3410057636		LITE 12/12 CAN	PREMIUM	1	Side 90	2
3202	3410001636		HIGH LIFE 12/12 CAN	ECONOMY	1	Side 90	2
66288	1820028443		NATURAL ICE 15/12 CAN	ECONOMY	1	Side 90	2

Name: 1_2 W:192.00 in D:19.00 in Avail Space: 8.48 in Ht Space: 12.00 in

ID	UPC	Barcode	Name	Category	HFacings	Orientation	Units
21956	8769210012		SAMUEL ADAMS BOSTON LAG...	ABOVE PREMIUM	1	Front	3
21940	8769201103		SAMUEL ADAMS SEASONAL 1...	ABOVE PREMIUM	1	Front	2
2638	3061300053		BROOKLYN SEASONAL 6/12 BTL	ABOVE PREMIUM	1	Front	3
2616	3061300001		BROOKLYN LAGER 6/12 BTL	ABOVE PREMIUM	1	Front	3
11951	73692011132		GOOSE ISLAND IPA 6/12 BTL	ABOVE PREMIUM	1	Front	3
14089	78615000001		STELLA ARTOIS 6/11.2 BTL	ABOVE PREMIUM	1	Front	3
11298	7289000011		HEINEKEN 6/12 BTL	ABOVE PREMIUM	1	Front	3
15400	8066095605		CORONA 6/12 BTL	ABOVE PREMIUM	2	Front	6



CVS # 07032 WARM

Address: 450 MAIN ST | City: ARMONK | State: NY

Chain/StoreNumer: CVS - EAST 07032

Reset Name: 2019 SPRING

Planogram Name: 7032_12ft_OPEN_WARM

44964	3354495041		CORONA PREMIER 6/12 BTL	ABOVE PREMIUM	1	Front	3
10790	7231123021		SOL 12/12 BTL	ABOVE PREMIUM	1	Side	2
23789	8982690033		TECATE 12/12 CAN	ABOVE PREMIUM	1	Side 90	2
10813	7231163012		DOS EQUIS 6/12 BTL	ABOVE PREMIUM	1	Side	2
15442	8066095765		MODELO ESPECIAL 6/12 BTL	ABOVE PREMIUM	1	Side	2
15449	8066095787		MODELO NEGRA 12/12 BTL	ABOVE PREMIUM	1	Front	2
65828	1820020083		MICHELOB ULTRA PURE GOLD...	ABOVE PREMIUM	1	Front	2
1056	1820000769		BUD LIGHT 12/12 BTL	PREMIUM	1	Front	2
1058	1820000771		BUD 12/12 BTL	PREMIUM	1	Front	2
10348	7199030069		COORS LIGHT 12/12 BTL	PREMIUM	1	Front	2
3565	3410057509		LITE 12/12 BTL	PREMIUM	1	Front	2
3198	3410001509		HIGH LIFE 12/12 BTL	ECONOMY	1	Front	2
61975	1820020077		NATURAL LIGHT 15/12 CAN	ECONOMY	1	Side 90	2

Name: 1_3 W:192.00 in D:19.00 in Avail Space: 5.10 in Ht Space: 12.00 in

ID	UPC	Barcode	Name	Category	HFacings	Orientation	Units
13009	75452700022		NEW BELGIUM FAT TIRE 6/12 B...	ABOVE PREMIUM	1	Front	3
10180	7199009511		BLUE MOON BELGIAN WHITE 6...	ABOVE PREMIUM	1	Front	3
10217	7199009584		BLUE MOON CINNAMON HORB...	ABOVE PREMIUM	1	Front	3
7044	64286090024		FOUNDERS ALL DAY SESSION...	ABOVE PREMIUM	1	Top	4



CVS # 07032 WARM

Address: 450 MAIN ST | City: ARMONK | State: NY

Chain/StoreNumer: CVS - EAST 07032

Reset Name: 2019 SPRING

Planogram Name: 7032_12ft_OPEN_WARM

5177	60690500830		ITHACA FLOWER POWER 6/12 ...	ABOVE PREMIUM	1	Front	3
10031	7167007106		SARANAC 12 BEERS 12/12 BTL	ABOVE PREMIUM	1	Front	2
11348	7289000188		HEINEKEN LIGHT 12/12 CAN	ABOVE PREMIUM	1	Top 90	2
11301	7289000020		HEINEKEN 12/12 CAN	ABOVE PREMIUM	1	Side 90	2
44952	3354495042		CORONA PREMIER 12/12 BTL	ABOVE PREMIUM	2	Side	2
15416	8066095675		CORONA LIGHT 12/12 BTL	ABOVE PREMIUM	1	Front	2
15406	8066095621		CORONA LIGHT 12/12 CAN	ABOVE PREMIUM	1	Top 90	2
15429	8066095715		MODELO ESPECIAL 12/12 CAN	ABOVE PREMIUM	1	Top	4
1850	1820096721		MICHELOB ULTRA 18/12 CAN	ABOVE PREMIUM	1	Side 90	1
1670	1820053308		BUD LIGHT 18/12 BTL	PREMIUM	1	Front	2
23900	8992427891		YUENGLING LAGER 6/12 BTL	PREMIUM	1	Front	3
23902	8992427896		YUENGLING LAGER 12/12 BTL	PREMIUM	1	Front	2
3552	3410057340		LITE 18/12 CAN	PREMIUM	2	Side 90	4
3532	3410057256		LITE 18/12 BTL	PREMIUM	1	Front	2
2241	2210000170		PABST 12/12 CAN	ECONOMY	1	Side 90	2

Name: 1_4 W:192.00 in D:19.00 in Avail Space: 1.98 in Ht Space: 21.00 in

ID	UPC	Barcode	Name	Category	HFacings	Orientation	Units
13037	75452700161		NEW BELGIUM FAT TIRE 12/12 ...	ABOVE PREMIUM	1	Side 90	8
10183	7199009516		BLUE MOON BELGIAN WHITE 1...	ABOVE PREMIUM	1	Side	4



CVS # 07032 WARM

Address: 450 MAIN ST | City: ARMONK | State: NY

Chain/StoreNumer: CVS - EAST 07032

Reset Name: 2019 SPRING

Planogram Name: 7032_12ft_OPEN_WARM

6433	63598512998	6		1	MIKES HARD VARIETY PACK 1...	ABOVE PREMIUM	1	Side	4
14094	78615000014	7		4	STELLA ARTOIS 12/11.2 BTL	ABOVE PREMIUM	1	Side	4
11342	7289000159	0		7	HEINEKEN LIGHT 12/12 BTL	ABOVE PREMIUM	1	Side	4
11300	7289000016	0		3	HEINEKEN 12/12 BTL	ABOVE PREMIUM	1	Side	4
16691	8248812300	0		6	BECKS 12/12 BTL	ABOVE PREMIUM	1	Side	4
15417	8066095680	0		0	CORONA 18/12 BTL	ABOVE PREMIUM	1	Side	2
15403	8066095615	0		2	CORONA 12/12 BTL	ABOVE PREMIUM	3	Front	12
15426	8066095695	0		4	CORONA 12/12 CAN	ABOVE PREMIUM	1	Side 90	8
15436	8066095757	0		9	MODELO ESPECIAL 12/12 BTL	ABOVE PREMIUM	2	Front	8
1228	1820005990	0		2	MICHELOB ULTRA 12/12 BTL	ABOVE PREMIUM	1	Front	6
1656	1820053030	0		2	BUD LIGHT 30/12 CAN	PREMIUM	1	Front	4
1667	1820053218	0		4	BUD LIGHT 18/12 CAN	PREMIUM	1	Side 90	4
1307	1820011218	0		8	BUD 18/12 CAN	PREMIUM	1	Side 90	4
10336	7199030030	0		2	COORS LIGHT 30/12 CAN	PREMIUM	1	Front	4
10329	7199030017	0		3	COORS LIGHT 18/12 CAN	PREMIUM	1	Side 90	3
10352	7199030078	0		4	COORS LIGHT 18/12 BTL	PREMIUM	1	Side	2