





CVS # 10038 COLD

Address: 1905 ROUTE 6 | City: CARMEL | State: NY

Chain/StoreNumer: CVS - EAST 10038

Reset Name: 2019 SPRING

Planogram Name: 10038_4_DOOR_COLD

Segment # 1 : 1_5 DEPTH: 23 in WIDTH: 22 in DISTANCE FROM TOP OF BASE SHELF TO BOTTOM OF SHELF:8.00 in							
POS #	FAC	UPC	NAME	CASES	CAPACITY	UNITS HIGH	Category
1	1	3354400013	CORONA REFRESCA VARIETY 12/12 CAN	2.0	4	1	ABOVE PREMIUM
2	1	3410051681	CAPE LINE VARIETY PACK 12/12 CAN	1.5	3	1	ABOVE PREMIUM
3	1	63598554890	WHITE CLAW VARIETY PACK 12/12 CAN	1.5	3	1	ABOVE PREMIUM

Segment # 1 : 1_4 DEPTH: 23 in WIDTH: 22 in DISTANCE FROM TOP OF BASE SHELF TO BOTTOM OF SHELF:22.00 in							
POS #	FAC	UPC	NAME	CASES	CAPACITY	UNITS HIGH	Category
1	1	78615000001	STELLA ARTOIS 6/11.2 BTL	0.8	3	1	ABOVE PREMIUM
2	1	78615000014	STELLA ARTOIS 12/11.2 BTL	1.0	2	1	ABOVE PREMIUM
3	1	8248812300	BECKS 12/12 BTL	1.0	2	1	ABOVE PREMIUM

Segment # 1 : 1_3 DEPTH: 23 in WIDTH: 22 in DISTANCE FROM TOP OF BASE SHELF TO BOTTOM OF SHELF:35.00 in							
POS #	FAC	UPC	NAME	CASES	CAPACITY	UNITS HIGH	Category
1	1	64286090024	FOUNDERS ALL DAY SESSION IPA 15/12 CAN	1.0	2	1	ABOVE PREMIUM
2	1	1820013986	SHOCK TOP BELGIAN WHITE 6/12 BTL	0.5	2	1	ABOVE PREMIUM
3	1	3410051605	LEINIES SEASONAL SHANDY 6/12 BTL	0.8	3	1	ABOVE PREMIUM
4	1	7199009511	BLUE MOON BELGIAN WHITE 6/12 BTL	0.8	3	1	ABOVE PREMIUM

Segment # 1 : 1_2 DEPTH: 23 in WIDTH: 22 in DISTANCE FROM TOP OF BASE SHELF TO BOTTOM OF SHELF:47.00 in							
POS #	FAC	UPC	NAME	CASES	CAPACITY	UNITS HIGH	Category
1	1	75452700161	NEW BELGIUM FAT TIRE 12/12 CAN	1.0	2	1	ABOVE PREMIUM
2	1	85375900031	SOUTHERN TIER PACK OF PALES 12/12 BTL	1.0	2	1	ABOVE PREMIUM
3	1	7199009516	BLUE MOON BELGIAN WHITE 12/12 BTL	1.0	2	1	ABOVE PREMIUM

Segment # 1 : 1_1 DEPTH: 23 in WIDTH: 22 in DISTANCE FROM TOP OF BASE SHELF TO BOTTOM OF SHELF:59.00 in							
POS #	FAC	UPC	NAME	CASES	CAPACITY	UNITS HIGH	Category
1	1	75452700022	NEW BELGIUM FAT TIRE 6/12 BTL	0.8	3	1	ABOVE PREMIUM
2	1	81760601000	CAPTAIN LAWRENCE FRESHCHESTER 6/12 BTL	0.8	3	1	ABOVE PREMIUM
3	1	81760601020	CAPTAIN LAWRENCE IPA 6/12 BTL	0.8	3	1	ABOVE PREMIUM
4	1	63848900029	DOGFISH HEAD 60 MINUTE IPA 6/12 BTL	0.8	3	1	ABOVE PREMIUM

Segment # 2 : 2_5 DEPTH: 23 in WIDTH: 22 in DISTANCE FROM TOP OF BASE SHELF TO BOTTOM OF SHELF:0.00 in							
POS #	FAC	UPC	NAME	CASES	CAPACITY	UNITS HIGH	Category
1	1	7289000020	HEINEKEN 12/12 CAN	2.0	4	1	ABOVE PREMIUM
2	1	3354495042	CORONA PREMIER 12/12 BTL	2.0	4	1	ABOVE PREMIUM
3	1	8066095680	CORONA 18/12 BTL	2.0	2	1	ABOVE PREMIUM

Segment # 2 : 2_4 DEPTH: 23 in WIDTH: 22 in DISTANCE FROM TOP OF BASE SHELF TO BOTTOM OF SHELF:22.00 in							
POS #	FAC	UPC	NAME	CASES	CAPACITY	UNITS HIGH	Category
1	1	7289000159	HEINEKEN LIGHT 12/12 BTL	1.0	2	1	ABOVE PREMIUM
2	1	8066095695	CORONA 12/12 CAN	1.0	2	1	ABOVE PREMIUM
3	1	8066095615	CORONA 12/12 BTL	1.0	2	1	ABOVE PREMIUM



CVS # 10038 COLD

Address: 1905 ROUTE 6 | City: CARMEL | State: NY

Chain/StoreNumer: CVS - EAST 10038

Reset Name: 2019 SPRING

Planogram Name: 10038_4_DOOR_COLD

Segment # 2 : 2_3 DEPTH: 23 in WIDTH: 22 in DISTANCE FROM TOP OF BASE SHELF TO BOTTOM OF SHELF:35.00 in

POS	# FAC	UPC	NAME	CASES	CAPACITY	UNITS HIGH	Category
1	1	7289000016	HEINEKEN 12/12 BTL	1.0	2	1	ABOVE PREMIUM
2	1	8066095675	CORONA LIGHT 12/12 BTL	1.0	2	1	ABOVE PREMIUM
3	1	8066095605	CORONA 6/12 BTL	0.5	2	1	ABOVE PREMIUM

Segment # 2 : 2_2 DEPTH: 23 in WIDTH: 22 in DISTANCE FROM TOP OF BASE SHELF TO BOTTOM OF SHELF:47.00 in

POS	# FAC	UPC	NAME	CASES	CAPACITY	UNITS HIGH	Category
1	1	7289000011	HEINEKEN 6/12 BTL	0.8	3	1	ABOVE PREMIUM
2	1	8066095625	CORONA LIGHT 6/12 BTL	0.5	2	1	ABOVE PREMIUM
3	1	8066095757	MODELO ESPECIAL 12/12 BTL	1.0	2	1	ABOVE PREMIUM

Segment # 2 : 2_1 DEPTH: 23 in WIDTH: 22 in DISTANCE FROM TOP OF BASE SHELF TO BOTTOM OF SHELF:59.00 in

POS	# FAC	UPC	NAME	CASES	CAPACITY	UNITS HIGH	Category
1	1	8066095785	MODELO NEGRA 6/12 BTL	0.8	3	1	ABOVE PREMIUM
2	1	8066095765	MODELO ESPECIAL 6/12 BTL	0.5	2	1	ABOVE PREMIUM
3	1	8066095715	MODELO ESPECIAL 12/12 CAN	1.0	2	1	ABOVE PREMIUM

Segment # 3 : 3_5 DEPTH: 23 in WIDTH: 22 in DISTANCE FROM TOP OF BASE SHELF TO BOTTOM OF SHELF:0.00 in

POS	# FAC	UPC	NAME	CASES	CAPACITY	UNITS HIGH	Category
1	1	1820053218	BUD LIGHT 18/12 CAN	4.0	4	1	PREMIUM
2	1	1820011218	BUD 18/12 CAN	2.0	2	1	PREMIUM
3	1	7199030030	COORS LIGHT 30/12 CAN	2.0	2	1	PREMIUM

Segment # 3 : 3_4 DEPTH: 23 in WIDTH: 22 in DISTANCE FROM TOP OF BASE SHELF TO BOTTOM OF SHELF:22.00 in

POS	# FAC	UPC	NAME	CASES	CAPACITY	UNITS HIGH	Category
1	1	1820053308	BUD LIGHT 18/12 BTL	1.0	1	1	PREMIUM
2	1	1820000771	BUD 12/12 BTL	1.0	2	1	PREMIUM
3	1	1820011047	BUD 12/12 CAN	1.0	2	1	PREMIUM

Segment # 3 : 3_3 DEPTH: 23 in WIDTH: 22 in DISTANCE FROM TOP OF BASE SHELF TO BOTTOM OF SHELF:35.00 in

POS	# FAC	UPC	NAME	CASES	CAPACITY	UNITS HIGH	Category
1	1	1820005990	MICHELOB ULTRA 12/12 BTL	1.0	2	1	ABOVE PREMIUM
2	1	1820096721	MICHELOB ULTRA 18/12 CAN	2.0	2	1	ABOVE PREMIUM
3	1	1820000769	BUD LIGHT 12/12 BTL	1.0	2	1	PREMIUM

Segment # 3 : 3_2 DEPTH: 23 in WIDTH: 22 in DISTANCE FROM TOP OF BASE SHELF TO BOTTOM OF SHELF:47.00 in

POS	# FAC	UPC	NAME	CASES	CAPACITY	UNITS HIGH	Category
1	1	63598510062	MIKES HARD LEMONADE 6/11.2 BTL	0.8	3	1	ABOVE PREMIUM
2	1	7231163012	DOS EQUIS 6/12 BTL	0.5	2	1	ABOVE PREMIUM
3	1	1820005989	MICHELOB ULTRA 6/12 BTL	0.8	3	1	ABOVE PREMIUM
4	1	1820020079	BUD LIGHT ORANGE 6/12 BTL	0.8	3	1	ABOVE PREMIUM

Segment # 3 : 3_1 DEPTH: 23 in WIDTH: 22 in DISTANCE FROM TOP OF BASE SHELF TO BOTTOM OF SHELF:59.00 in



CVS # 10038 COLD

Address: 1905 ROUTE 6 | City: CARMEL | State: NY

Chain/StoreNumer: CVS - EAST 10038

Reset Name: 2019 SPRING

Planogram Name: 10038_4_DOOR_COLD

POS	#	FAC	UPC	NAME	CASES	CAPACITY	UNITS HIGH	Category
1	1		85389700227	BON AND VIV SPIKED SELTZER VARIETY 12/12 CAN	1.5	3	1	ABOVE PREMIUM
2	1		3410000342	REDD'S WICKED 12/10 CAN	1.5	3	1	ABOVE PREMIUM
3	1		8769200660	ANGRY ORCHARD ROSE 6/12 BTL	0.8	3	1	ABOVE PREMIUM
4	1		8769282102	ANGRY ORCHARD CRISP APPLE 6/12 BTL	0.8	3	1	ABOVE PREMIUM

Segment # 4 : 4_5 DEPTH: 23 in WIDTH: 22 in DISTANCE FROM TOP OF BASE SHELF TO BOTTOM OF SHELF:0.00 in

POS	#	FAC	UPC	NAME	CASES	CAPACITY	UNITS HIGH	Category
1	1		7199030078	COORS LIGHT 18/12 BTL	2.0	2	1	PREMIUM
2	1		7199030017	COORS LIGHT 18/12 CAN	3.0	3	1	PREMIUM
3	1		3410057340	LITE 18/12 CAN	2.0	2	1	PREMIUM

Segment # 4 : 4_4 DEPTH: 23 in WIDTH: 22 in DISTANCE FROM TOP OF BASE SHELF TO BOTTOM OF SHELF:21.00 in

POS	#	FAC	UPC	NAME	CASES	CAPACITY	UNITS HIGH	Category
1	1		7199030069	COORS LIGHT 12/12 BTL	1.0	2	1	PREMIUM
2	1		3410057509	LITE 12/12 BTL	1.0	2	1	PREMIUM
3	1		1820020077	NATURAL LIGHT 15/12 CAN	0.5	1	1	ECONOMY

Segment # 4 : 4_3 DEPTH: 23 in WIDTH: 22 in DISTANCE FROM TOP OF BASE SHELF TO BOTTOM OF SHELF:35.00 in

POS	#	FAC	UPC	NAME	CASES	CAPACITY	UNITS HIGH	Category
1	1		7199032000	COORS LIGHT 6/16 CAN	0.5	2	1	PREMIUM
2	1		7199000048	COORS LIGHT 12/12 CAN	1.5	3	1	PREMIUM
3	1		3410057636	LITE 12/12 CAN	1.0	2	1	PREMIUM
4	1		1820028443	NATURAL ICE 15/12 CAN	0.5	1	1	ECONOMY

Segment # 4 : 4_2 DEPTH: 23 in WIDTH: 22 in DISTANCE FROM TOP OF BASE SHELF TO BOTTOM OF SHELF:47.00 in

POS	#	FAC	UPC	NAME	CASES	CAPACITY	UNITS HIGH	Category
1	1		1820053047	BUD LIGHT 12/12 CAN	1.0	2	1	PREMIUM
2	1		7199030120	COORS LIGHT 3/24 CAN	0.5	2	1	PREMIUM
3	1		7199000008	COORS LIGHT 6/12 CAN	1.5	6	1	PREMIUM
4	1		3410001509	HIGH LIFE 12/12 BTL	1.0	2	1	ECONOMY

Segment # 4 : 4_1 DEPTH: 23 in WIDTH: 22 in DISTANCE FROM TOP OF BASE SHELF TO BOTTOM OF SHELF:59.00 in

POS	#	FAC	UPC	NAME	CASES	CAPACITY	UNITS HIGH	Category
1	1		7089701331	FOSTERS 1/25.4 CAN	0.5	6	1	ABOVE PREMIUM
2	1		61300874829	ARNOLD PALMER SPIKED HALF AND HALF 1/24 CAN	0.7	8	1	ABOVE PREMIUM
3	1		8066095643	CORONA 1/24 CAN	0.7	8	1	ABOVE PREMIUM
4	1		1820025001	BUD LIGHT 1/25 CAN	0.5	8	1	PREMIUM
5	1		1820025000	BUD 1/25 CAN	0.5	8	1	PREMIUM
6	1		7199030065	COORS LIGHT 1/24 CAN	0.7	8	1	PREMIUM
7	1		3410000355	LITE 1/24 CAN	0.7	8	1	PREMIUM

REVERSE VIEW (ONLY IF NEEDED)





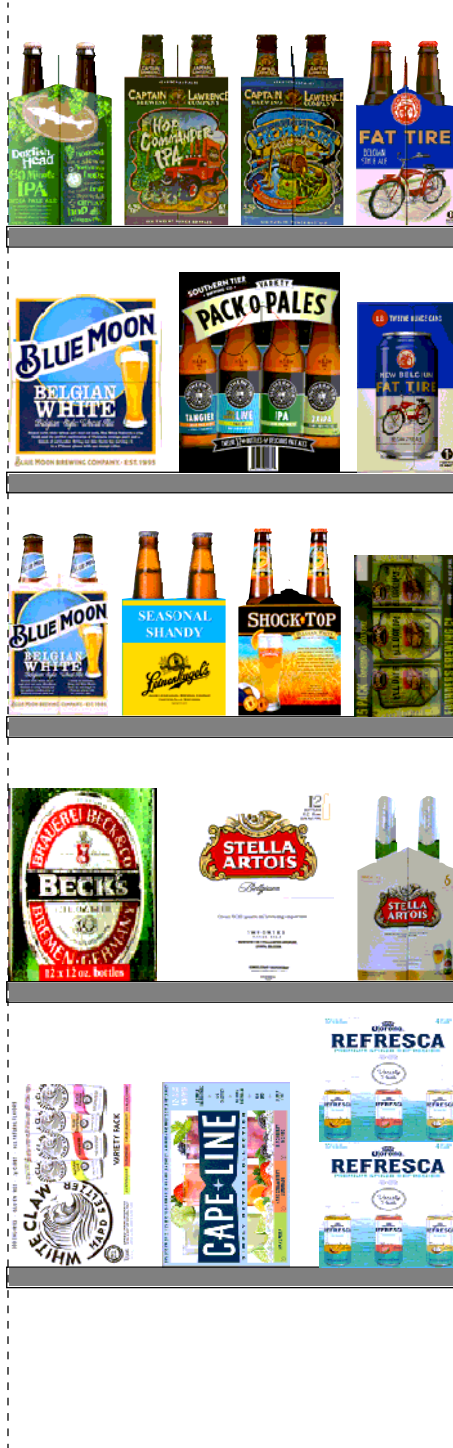
CVS # 10038 COLD

Reset Timing 2019 SPRING

Address: 1905 ROUTE 6 | City: CARMEL | State: NY

REVERSE VIEW (ONLY IF NEEDED)

Segment:
1 of 4



Segment # 1 : 1_5 8.00 In

POS	UPC	NAME
1	3354400013	CORONA REFRESCA VARIETY 12/ 12 CAN
2	3410051681	CAPE LINE VARIETY PACK 12/ 12 CAN
3	63598554890	WHITE CLAW VARIETY PACK 12/ 12 CAN

Segment # 1 : 1_4 22.00 In

POS	UPC	NAME
1	78615000001	STELLA ARTOIS 6/ 11.2 BTL
2	78615000014	STELLA ARTOIS 12/ 11.2 BTL
3	8248812300	BECKS 12/ 12 BTL

Segment # 1 : 1_3 35.00 In

POS	UPC	NAME
1	64286090024	FOUNDERS ALL DAY SESSION IPA 15/ 12 CAN
2	1820013986	SHOCK TOP BELGIAN WHITE 6/ 12 BTL
3	3410051605	LEINIES SEASONAL SHANDY 6/ 12 BTL
4	7199009511	BLUE MOON BELGIAN WHITE 6/ 12 BTL

Segment # 1 : 1_2 47.00 In

POS	UPC	NAME
1	75452700161	NEW BELGIUM FAT TIRE 12/ 12 CAN
2	85375900031	SOUTHERN TIER PACK OF PALES 12/ 12 BTL
3	7199009516	BLUE MOON BELGIAN WHITE 12/ 12 BTL

Segment # 1 : 1_1 59.00 In

POS	UPC	NAME
1	75452700022	NEW BELGIUM FAT TIRE 6/ 12 BTL
2	81760601000	CAPTAIN LAWRENCE FRESHCHESTER 6/ 12 BTL
3	81760601020	CAPTAIN LAWRENCE IPA 6/ 12 BTL
4	63848900029	DOGFISH HEAD 60 MINUTE IPA 6/ 12 BTL



CVS # 10038 COLD

Reset Timing 2019 SPRING

Address: 1905 ROUTE 6 | City: CARMEL | State: NY

REVERSE VIEW (ONLY IF NEEDED)

Segment:
2 of 4



Segment # 2 : 2_5 0.00 In

POS	UPC	NAME
1	7289000020	HEINEKEN 12/ 12 CAN
2	3354495042	CORONA PREMIER 12/ 12 BTL
3	8066095680	CORONA 18/ 12 BTL

Segment # 2 : 2_4 22.00 In

POS	UPC	NAME
1	7289000159	HEINEKEN LIGHT 12/ 12 BTL
2	8066095695	CORONA 12/ 12 CAN
3	8066095615	CORONA 12/ 12 BTL

Segment # 2 : 2_3 35.00 In

POS	UPC	NAME
1	7289000016	HEINEKEN 12/ 12 BTL
2	8066095675	CORONA LIGHT 12/ 12 BTL
3	8066095605	CORONA 6/ 12 BTL

Segment # 2 : 2_2 47.00 In

POS	UPC	NAME
1	7289000011	HEINEKEN 6/ 12 BTL
2	8066095625	CORONA LIGHT 6/ 12 BTL
3	8066095757	MODELO ESPECIAL 12/ 12 BTL

Segment # 2 : 2_1 59.00 In

POS	UPC	NAME
1	8066095785	MODELO NEGRA 6/ 12 BTL
2	8066095765	MODELO ESPECIAL 6/ 12 BTL
3	8066095715	MODELO ESPECIAL 12/ 12 CAN



CVS # 10038 COLD

Reset Timing 2019 SPRING

Address: 1905 ROUTE 6 | City: CARMEL | State: NY

REVERSE VIEW (ONLY IF NEEDED)

Segment:
3 of 4



Segment # 3 : 3_5 0.00 In

POS	UPC	NAME
1	1820053218	BUD LIGHT 18/ 12 CAN
2	1820011218	BUD 18/ 12 CAN
3	7199030030	COORS LIGHT 30/ 12 CAN

Segment # 3 : 3_4 22.00 In

POS	UPC	NAME
1	1820053308	BUD LIGHT 18/ 12 BTL
2	1820000771	BUD 12/ 12 BTL
3	1820011047	BUD 12/ 12 CAN

Segment # 3 : 3_3 35.00 In

POS	UPC	NAME
1	1820005990	MICHELOB ULTRA 12/ 12 BTL
2	18200096721	MICHELOB ULTRA 18/ 12 CAN
3	1820000769	BUD LIGHT 12/ 12 BTL

Segment # 3 : 3_2 47.00 In

POS	UPC	NAME
1	63598510062	MIKES HARD LEMONADE 6/ 11.2 BTL
2	7231163012	DOS EQUIS 6/ 12 BTL
3	1820005989	MICHELOB ULTRA 6/ 12 BTL
4	1820020079	BUD LIGHT ORANGE 6/ 12 BTL

Segment # 3 : 3_1 59.00 In

POS	UPC	NAME
1	85389700227	BON AND VIV SPIKED SELTZER VARIETY 12/ 12 CAN
2	3410000342	REDD'S WICKED 12/ 10 CAN
3	8769200660	ANGRY ORCHARD ROSE 6/ 12 BTL
4	8769282102	ANGRY ORCHARD CRISP APPLE 6/ 12 BTL



CVS # 10038 COLD

Reset Timing 2019 SPRING

Address: 1905 ROUTE 6 | City: CARMEL | State: NY

REVERSE VIEW (ONLY IF NEEDED)

Segment:
4 of 4



Segment # 4 : 4_5 0.00 In

POS	UPC	NAME
1	7199030078	COORS LIGHT 18/ 12 BTL
2	7199030017	COORS LIGHT 18/ 12 CAN
3	3410057340	LITE 18/ 12 CAN

Segment # 4 : 4_4 21.00 In

POS	UPC	NAME
1	7199030069	COORS LIGHT 12/ 12 BTL
2	3410057509	LITE 12/ 12 BTL
3	1820020077	NATURAL LIGHT 15/ 12 CAN

Segment # 4 : 4_3 35.00 In

POS	UPC	NAME
1	7199032000	COORS LIGHT 6/ 16 CAN
2	7199000048	COORS LIGHT 12/ 12 CAN
3	3410057636	LITE 12/ 12 CAN
4	1820028443	NATURAL ICE 15/ 12 CAN

Segment # 4 : 4_2 47.00 In

POS	UPC	NAME
1	1820053047	BUD LIGHT 12/ 12 CAN
2	7199030120	COORS LIGHT 3/ 24 CAN
3	7199000008	COORS LIGHT 6/ 12 CAN
4	3410001509	HIGH LIFE 12/ 12 BTL

Segment # 4 : 4_1 59.00 In

POS	UPC	NAME
1	7089701331	FOSTERS 1/25.4 CAN
2	61300874829	ARNOLD PALMER SPIKED HALF AND HALF 1/24 CAN
3	8066095643	CORONA 1/24 CAN
4	1820025001	BUD LIGHT 1/25 CAN
5	1820025000	BUD 1/25 CAN
6	7199030065	COORS LIGHT 1/24 CAN
7	3410000355	LITE 1/24 CAN



CVS # 10038 COLD

Address: 1905 ROUTE 6 | City: CARMEL | State: NY

Chain/StoreNumer: CVS - EAST 10038

Reset Name: 2019 SPRING

Planogram Name: 10038_4_DOOR_COLD

CVS PHARMA... Store # 10038 H: 5 ft 11.00 in W: 7 ft 4.00 in D: 1 ft 11.00 in # of segments: 4

Name: 1_1 W:22.00 in D:23.00 in Avail Space: 1.70 in Ht Space: 11.00 in

ID	UPC	Barcode	Name	Category	HFacings	Orientation	Units
13009	75452700022	7 54527 00022 6	NEW BELGIUM FAT TIRE 6/12 B...	ABOVE PREMIUM	1	Side	3
15955	81760601000	8 17606 01000 1	CAPTAIN LAWRENCE FRESHC...	ABOVE PREMIUM	1	Side	3
15961	81760601020	8 17606 01020 9	CAPTAIN LAWRENCE IPA 6/12 ...	ABOVE PREMIUM	1	Side	3
6748	63848900029	6 38489 00029 9	DOGFISH HEAD 60 MINUTE IPA...	ABOVE PREMIUM	1	Side	3

Name: 1_2 W:22.00 in D:23.00 in Avail Space: 1.75 in Ht Space: 11.00 in

ID	UPC	Barcode	Name	Category	HFacings	Orientation	Units
13037	75452700161	7 54527 00161 2	NEW BELGIUM FAT TIRE 12/12 ...	ABOVE PREMIUM	1	Side	2
19137	85375900031	8 53759 00031 5	SOUTHERN TIER PACK OF PA...	ABOVE PREMIUM	1	Side	2
10183	7199009516	0 71990 09516 1	BLUE MOON BELGIAN WHITE 1...	ABOVE PREMIUM	1	Side	2

Name: 1_3 W:22.00 in D:23.00 in Avail Space: 1.86 in Ht Space: 11.00 in

ID	UPC	Barcode	Name	Category	HFacings	Orientation	Units
7044	64286090024	6 42860 90024 5	FOUNDERS ALL DAY SESSION...	ABOVE PREMIUM	1	Side	2
1345	1820013986	0 18200 13986 4	SHOCK TOP BELGIAN WHITE 6...	ABOVE PREMIUM	1	Side	2
3492	3410051605	0 34100 51605 5	LEINIES SEASONAL SHANDY 6...	ABOVE PREMIUM	1	Side	3
10180	7199009511	0 71990 09511 6	BLUE MOON BELGIAN WHITE 6...	ABOVE PREMIUM	1	Side	3

Name: 1_4 W:22.00 in D:23.00 in Avail Space: 2.40 in Ht Space: 12.00 in

ID	UPC	Barcode	Name	Category	HFacings	Orientation	Units
14089	78615000001	7 86150 00001 4	STELLA ARTOIS 6/11.2 BTL	ABOVE PREMIUM	1	Side	3
14094	78615000014	7 86150 00014 4	STELLA ARTOIS 12/11.2 BTL	ABOVE PREMIUM	1	Side	2
16691	8248812300	0 82488 12300 6	BECKS 12/12 BTL	ABOVE PREMIUM	1	Side	2



CVS # 10038 COLD

Address: 1905 ROUTE 6 | City: CARMEL | State: NY

Chain/StoreNumer: CVS - EAST 10038

Reset Name: 2019 SPRING

Planogram Name: 10038_4_DOOR_COLD

Name: 1_5		W:22.00 in	D:23.00 in	Avail Space: 2.91 in	Ht Space: 13.00 in		
ID	UPC	Barcode	Name	Category	HFacings	Orientation	Units
86777	3354400013		CORONA REFRESCA VARIETY...	ABOVE PREMIUM	1	Side	4
86788	3410051681		CAPE LINE VARIETY PACK 12/1...	ABOVE PREMIUM	1	Front 90	3
45151	63598554890		WHITE CLAW VARIETY PACK 1...	ABOVE PREMIUM	1	Front 90	3

Name: 2_1		W:22.00 in	D:23.00 in	Avail Space: 1.84 in	Ht Space: 11.00 in		
ID	UPC	Barcode	Name	Category	HFacings	Orientation	Units
15448	8066095785		MODELO NEGRA 6/12 BTL	ABOVE PREMIUM	1	Front	3
15442	8066095765		MODELO ESPECIAL 6/12 BTL	ABOVE PREMIUM	1	Side	2
15429	8066095715		MODELO ESPECIAL 12/12 CAN	ABOVE PREMIUM	1	Side	2

Name: 2_2		W:22.00 in	D:23.00 in	Avail Space: 2.53 in	Ht Space: 11.00 in		
ID	UPC	Barcode	Name	Category	HFacings	Orientation	Units
11298	7289000011		HEINEKEN 6/12 BTL	ABOVE PREMIUM	1	Side	3
15408	8066095625		CORONA LIGHT 6/12 BTL	ABOVE PREMIUM	1	Side	2
15436	8066095757		MODELO ESPECIAL 12/12 BTL	ABOVE PREMIUM	1	Side	2

Name: 2_3		W:22.00 in	D:23.00 in	Avail Space: 1.61 in	Ht Space: 11.00 in		
ID	UPC	Barcode	Name	Category	HFacings	Orientation	Units
11300	7289000016		HEINEKEN 12/12 BTL	ABOVE PREMIUM	1	Side	2
15416	8066095675		CORONA LIGHT 12/12 BTL	ABOVE PREMIUM	1	Side	2
15400	8066095605		CORONA 6/12 BTL	ABOVE PREMIUM	1	Side	2

Name: 2_4		W:22.00 in	D:23.00 in	Avail Space: 2.01 in	Ht Space: 12.00 in		
ID	UPC	Barcode	Name	Category	HFacings	Orientation	Units
11342	7289000159		HEINEKEN LIGHT 12/12 BTL	ABOVE PREMIUM	1	Side	2



CVS # 10038 COLD

Address: 1905 ROUTE 6 | City: CARMEL | State: NY

Chain/StoreNumer: CVS - EAST 10038

Reset Name: 2019 SPRING

Planogram Name: 10038_4_DOOR_COLD

15426	8066095695		CORONA 12/12 CAN	ABOVE PREMIUM	1	Top 90	2
15403	8066095615		CORONA 12/12 BTL	ABOVE PREMIUM	1	Side	2

Name: 2_5 W:22.00 in D:23.00 in Avail Space: 1.33 in Ht Space: 21.00 in

ID	UPC	Barcode	Name	Category	HFacings	Orientation	Units
11301	7289000020		HEINEKEN 12/12 CAN	ABOVE PREMIUM	1	Side	4
44952	3354495042		CORONA PREMIER 12/12 BTL	ABOVE PREMIUM	1	Side	4
15417	8066095680		CORONA 18/12 BTL	ABOVE PREMIUM	1	Side	2

Name: 3_1 W:22.00 in D:23.00 in Avail Space: 1.19 in Ht Space: 11.00 in

ID	UPC	Barcode	Name	Category	HFacings	Orientation	Units
19178	85389700227		BON AND VIV SPIKED SELTZE...	ABOVE PREMIUM	1	Front 90	3
2951	3410000342		REDD'S WICKED 12/10 CAN	ABOVE PREMIUM	1	Top 90	3
65019	8769200660		ANGRY ORCHARD ROSE 6/12 ...	ABOVE PREMIUM	1	Side	3
22090	8769282102		ANGRY ORCHARD CRISP APP...	ABOVE PREMIUM	1	Side	3

Name: 3_2 W:22.00 in D:23.00 in Avail Space: 1.77 in Ht Space: 11.00 in

ID	UPC	Barcode	Name	Category	HFacings	Orientation	Units
6413	63598510062		MIKES HARD LEMONADE 6/11....	ABOVE PREMIUM	1	Side	3
10813	7231163012		DOS EQUIS 6/12 BTL	ABOVE PREMIUM	1	Side	2
1227	1820005989		MICHELOB ULTRA 6/12 BTL	ABOVE PREMIUM	1	Side	3
67176	1820020079		BUD LIGHT ORANGE 6/12 BTL	ABOVE PREMIUM	1	Side	3

Name: 3_3 W:22.00 in D:23.00 in Avail Space: 1.14 in Ht Space: 11.00 in

ID	UPC	Barcode	Name	Category	HFacings	Orientation	Units
1228	1820005990		MICHELOB ULTRA 12/12 BTL	ABOVE PREMIUM	1	Side	2



CVS # 10038 COLD

Address: 1905 ROUTE 6 | City: CARMEL | State: NY

Chain/StoreNumer: CVS - EAST 10038

Reset Name: 2019 SPRING

Planogram Name: 10038_4_DOOR_COLD

1850	1820096721		MICHELOB ULTRA 18/12 CAN	ABOVE PREMIUM	1	Side	2
1056	1820000769		BUD LIGHT 12/12 BTL	PREMIUM	1	Side	2

Name: 3_4 W:22.00 in D:23.00 in Avail Space: 2.35 in Ht Space: 12.00 in

ID	UPC	Barcode	Name	Category	HFacings	Orientation	Units
1670	1820053308		BUD LIGHT 18/12 BTL	PREMIUM	1	Side	1
1058	1820000771		BUD 12/12 BTL	PREMIUM	1	Side	2
1297	1820011047		BUD 12/12 CAN	PREMIUM	1	Top 90	2

Name: 3_5 W:22.00 in D:23.00 in Avail Space: 1.65 in Ht Space: 21.00 in

ID	UPC	Barcode	Name	Category	HFacings	Orientation	Units
1667	1820053218		BUD LIGHT 18/12 CAN	PREMIUM	1	Side 90	4
1307	1820011218		BUD 18/12 CAN	PREMIUM	1	Top 90	2
10336	7199030030		COORS LIGHT 30/12 CAN	PREMIUM	1	Side	2

Name: 4_1 W:22.00 in D:23.00 in Avail Space: 1.50 in Ht Space: 11.00 in

ID	UPC	Barcode	Name	Category	HFacings	Orientation	Units
9452	7089701331		FOSTERS 1/25.4 CAN	ABOVE PREMIUM	1	Front	6
66064	61300874829		ARNOLD PALMER SPIKED HAL...	ABOVE PREMIUM	1	Side	8
15415	8066095643		CORONA 1/24 CAN	ABOVE PREMIUM	1	Front	8
1521	1820025001		BUD LIGHT 1/25 CAN	PREMIUM	1	Front	8
1520	1820025000		BUD 1/25 CAN	PREMIUM	1	Front	8
10346	7199030065		COORS LIGHT 1/24 CAN	PREMIUM	1	Front	8
2968	3410000355		LITE 1/24 CAN	PREMIUM	1	Front	8



CVS # 10038 COLD

Address: 1905 ROUTE 6 | City: CARMEL | State: NY

Chain/StoreNumer: CVS - EAST 10038

Reset Name: 2019 SPRING

Planogram Name: 10038_4_DOOR_COLD

Name: 4_2		W:22.00 in	D:23.00 in	Avail Space: 1.65 in		Ht Space: 11.00 in	
ID	UPC	Barcode	Name	Category	HFacings	Orientation	Units
1659	1820053047		BUD LIGHT 12/12 CAN	PREMIUM	1	Top 90	2
10372	7199030120		COORS LIGHT 3/24 CAN	PREMIUM	1	Side	2
10155	7199000008		COORS LIGHT 6/12 CAN	PREMIUM	1	Side	6
3198	3410001509		HIGH LIFE 12/12 BTL	ECONOMY	1	Side	2

Name: 4_3		W:22.00 in	D:23.00 in	Avail Space: 1.75 in		Ht Space: 11.00 in	
ID	UPC	Barcode	Name	Category	HFacings	Orientation	Units
10382	7199032000		COORS LIGHT 6/16 CAN	PREMIUM	1	Side	2
10164	7199000048		COORS LIGHT 12/12 CAN	PREMIUM	1	Top 90	3
3579	3410057636		LITE 12/12 CAN	PREMIUM	1	Top 270	2
66288	1820028443		NATURAL ICE 15/12 CAN	ECONOMY	1	Side	1

Name: 4_4		W:22.00 in	D:23.00 in	Avail Space: 2.38 in		Ht Space: 13.00 in	
ID	UPC	Barcode	Name	Category	HFacings	Orientation	Units
10348	7199030069		COORS LIGHT 12/12 BTL	PREMIUM	1	Side	2
3565	3410057509		LITE 12/12 BTL	PREMIUM	1	Side	2
61975	1820020077		NATURAL LIGHT 15/12 CAN	ECONOMY	1	Side	1

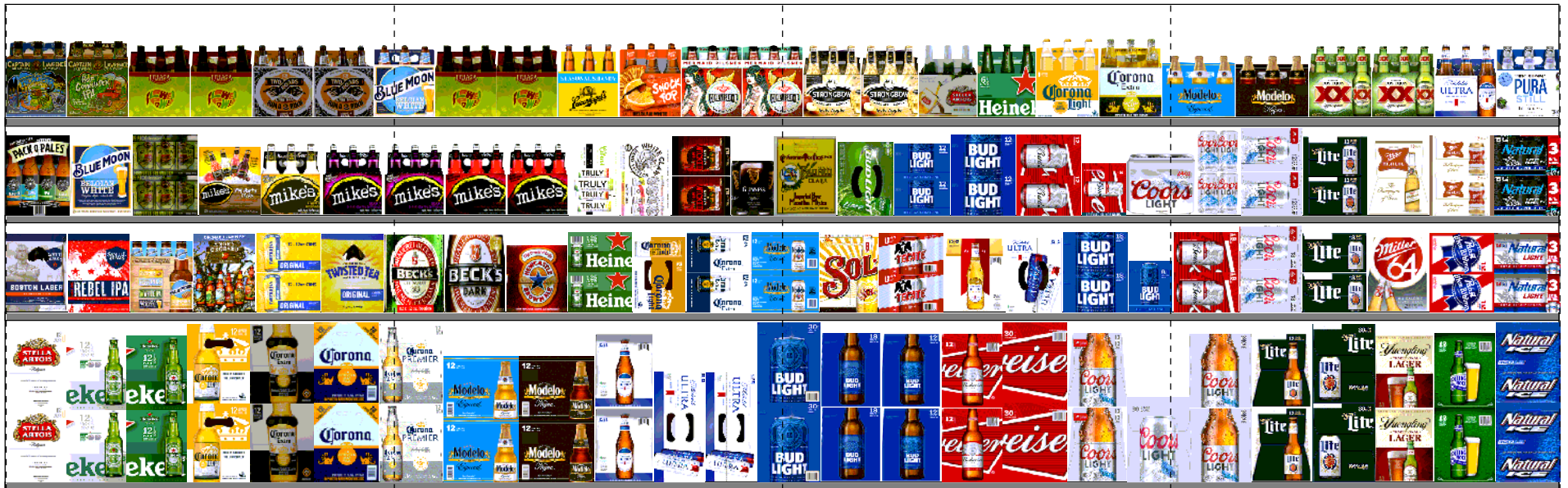
Name: 4_5		W:22.00 in	D:23.00 in	Avail Space: 1.92 in		Ht Space: 20.00 in	
ID	UPC	Barcode	Name	Category	HFacings	Orientation	Units
10352	7199030078		COORS LIGHT 18/12 BTL	PREMIUM	1	Side	2
10329	7199030017		COORS LIGHT 18/12 CAN	PREMIUM	1	Side 90	3
3552	3410057340		LITE 18/12 CAN	PREMIUM	1	Top 90	2



CVS # 10038 WARM

Reset Timing 2019 SPRING

Address: 1905 ROUTE 6 | City: CARMEL | State: NY





CVS # 10038 WARM

Address: 1905 ROUTE 6 | City: CARMEL | State: NY

Chain/StoreNumer: CVS - EAST 10038

Reset Name: 2019 SPRING

Planogram Name: 10038_16ft_OPEN_WARM

Segment # 2 : 2_4 DEPTH: 12 In WIDTH: 192 In DISTANCE FROM TOP OF BASE SHELF TO BOTTOM OF SHELF:0.00 In

POS	# FAC	UPC	NAME	CASES	CAPACITY	UNITS HIGH	Category
1	1	7861500014	STELLA ARTOIS 12/11.2 BTL	1.0	2	1	ABOVE PREMIUM
2	1	7289000159	HEINEKEN LIGHT 12/12 BTL	1.0	2	1	ABOVE PREMIUM
3	1	7289000016	HEINEKEN 12/12 BTL	1.0	2	1	ABOVE PREMIUM
4	1	8066095675	CORONA LIGHT 12/12 BTL	1.0	2	1	ABOVE PREMIUM
5	1	8066095615	CORONA 12/12 BTL	1.0	2	1	ABOVE PREMIUM
6	1	8066095680	CORONA 18/12 BTL	2.0	2	1	ABOVE PREMIUM
1	1	3354495042	CORONA PREMIER 12/12 BTL	1.0	2	1	ABOVE PREMIUM
2	1	8066095757	MODELO ESPECIAL 12/12 BTL	2.0	4	1	ABOVE PREMIUM
3	1	8066095787	MODELO NEGRA 12/12 BTL	1.0	2	1	ABOVE PREMIUM
4	1	1820005990	MICHELOB ULTRA 12/12 BTL	1.0	2	1	ABOVE PREMIUM
5	1	1820096721	MICHELOB ULTRA 18/12 CAN	2.0	2	1	ABOVE PREMIUM
6	1	1820096550	MICHELOB ULTRA 30/12 CAN	1.0	1	1	ABOVE PREMIUM
1	1	1820053030	BUD LIGHT 30/12 CAN	2.0	2	1	PREMIUM
2	1	1820053308	BUD LIGHT 18/12 BTL	2.0	2	1	PREMIUM
3	1	1820000769	BUD LIGHT 12/12 BTL	1.0	2	1	PREMIUM
4	1	1820000771	BUD 12/12 BTL	1.0	2	1	PREMIUM
5	1	1820011030	BUD 30/12 CAN	2.0	2	1	PREMIUM
6	1	7199030069	COORS LIGHT 12/12 BTL	1.0	2	1	PREMIUM
7	1	7199030030	COORS LIGHT 30/12 CAN	1.0	1	1	PREMIUM
1	1	7199030078	COORS LIGHT 18/12 BTL	2.0	2	1	PREMIUM
2	1	3410057509	LITE 12/12 BTL	1.0	2	1	PREMIUM
3	1	3410057341	LITE 30/12 CAN	2.0	2	1	PREMIUM
4	1	8992427896	YUENGLING LAGER 12/12 BTL	1.0	2	1	PREMIUM
5	1	7143945712	ROLLING ROCK 12/12 BTL	1.0	2	1	ECONOMY
6	1	1820027030	NATURAL ICE 30/12 CAN	2.0	2	1	ECONOMY

Segment # 2 : 2_3 DEPTH: 12 In WIDTH: 192 In DISTANCE FROM TOP OF BASE SHELF TO BOTTOM OF SHELF:21.00 In

POS	# FAC	UPC	NAME	CASES	CAPACITY	UNITS HIGH	Category
1	1	8769210014	SAMUEL ADAMS BOSTON LAGER 12/12 BTL	0.5	1	1	ABOVE PREMIUM
2	1	8769200129	SAMUEL ADAMS REBEL IPA 12/12 BTL	0.5	1	1	ABOVE PREMIUM
3	1	7199009554	BLUE MOON BREWMASTER VARIETY 12/12 BTL	0.5	1	1	ABOVE PREMIUM
4	1	8769200017	ANGRY ORCHARD EXPLORER PACK 12/12 BTL	0.5	1	1	ABOVE PREMIUM
5	1	8769283134	TWISTED TEA ORIGINAL 12/12 CAN	1.0	2	1	ABOVE PREMIUM
6	1	8769283103	TWISTED TEA ORIGINAL 12/12 BTL	0.5	1	1	ABOVE PREMIUM
1	1	8248812300	BECKS 12/12 BTL	0.5	1	1	ABOVE PREMIUM
2	1	8248812400	BECKS DARK 12/12 BTL	0.5	1	1	ABOVE PREMIUM
3	1	8834510053	NEWCASTLE BROWN ALE 12/12 BTL	0.5	1	1	ABOVE PREMIUM
4	1	7289000020	HEINEKEN 12/12 CAN	1.0	2	1	ABOVE PREMIUM
5	1	8066095621	CORONA LIGHT 12/12 CAN	0.5	1	1	ABOVE PREMIUM
6	1	8066095695	CORONA 12/12 CAN	1.0	2	1	ABOVE PREMIUM
1	1	8066095715	MODELO ESPECIAL 12/12 CAN	1.0	2	1	ABOVE PREMIUM
2	1	7231123021	SOL 12/12 BTL	0.5	1	1	ABOVE PREMIUM
3	1	8982690033	TECATE 12/12 CAN	1.0	2	1	ABOVE PREMIUM
4	1	1820020083	MICHELOB ULTRA PURE GOLD 12/12 BTL	0.5	1	1	ABOVE PREMIUM
5	1	1820006991	MICHELOB ULTRA 12/12 CAN	0.5	1	1	ABOVE PREMIUM
6	1	1820053218	BUD LIGHT 18/12 CAN	2.0	2	1	PREMIUM
7	1	1820008989	BUD LIGHT 8/16 CAN	0.3	1	1	PREMIUM
1	1	1820011218	BUD 18/12 CAN	2.0	2	1	PREMIUM
2	1	7199030017	COORS LIGHT 18/12 CAN	2.0	2	1	PREMIUM
3	1	3410057340	LITE 18/12 CAN	2.0	2	1	PREMIUM
4	1	3410015509	MILLER 64 12/12 BTL	0.5	1	1	PREMIUM
5	1	2210000170	PABST 12/12 CAN	1.0	2	1	ECONOMY



CVS # 10038 WARM

Address: 1905 ROUTE 6 | City: CARMEL | State: NY

Chain/StoreNumer: CVS - EAST 10038

Reset Name: 2019 SPRING

Planogram Name: 10038_16ft_OPEN_WARM

6 1 1820020077 NATURAL LIGHT 15/12 CAN 1.0 2 1 ECONOMY

Segment # 2 : 2_2 DEPTH: 12 In WIDTH: 192 In DISTANCE FROM TOP OF BASE SHELF TO BOTTOM OF SHELF:33.00 In

POS	# FAC	UPC	NAME	CASES	CAPACITY	UNITS HIGH	Category
1	1	85375900031	SOUTHERN TIER PACK OF PALES 12/12 BTL	0.5	1	1	ABOVE PREMIUM
2	1	7199009516	BLUE MOON BELGIAN WHITE 12/12 BTL	0.5	1	1	ABOVE PREMIUM
3	1	64286090024	FOUNDERS ALL DAY SESSION IPA 15/12 CAN	2.0	4	1	ABOVE PREMIUM
4	1	63598512998	MIKES HARD VARIETY PACK 12/11.2 BTL	0.5	1	1	ABOVE PREMIUM
5	1	63598510062	MIKES HARD LEMONADE 6/11.2 BTL	0.5	2	1	ABOVE PREMIUM
6	2	63598506744	MIKES HARD BLACK CHERRY LEMONADE 6/11.2 BTL	1.0	4	2	ABOVE PREMIUM
1	2	63598560611	MIKES HARD CRANBERRY PASSIONFRUIT LEMONADE 6/11.2 BTL	1.0	4	2	ABOVE PREMIUM
2	1	8769200424	TRULY VARIETY PACK 12/12 CAN	0.5	1	1	ABOVE PREMIUM
3	1	63598554890	WHITE CLAW VARIETY PACK 12/12 CAN	0.5	1	1	ABOVE PREMIUM
4	1	3410000342	REDD'S WICKED 12/10 CAN	1.0	2	1	ABOVE PREMIUM
5	1	8382012360	GUINNESS DRAUGHT STOUT 4/14.9 CAN	0.3	2	1	ABOVE PREMIUM
1	1	8066095315	PACIFICO 12/12 BTL	0.5	1	1	ABOVE PREMIUM
2	1	1820015983	BUD LIGHT LIME 12/12 CAN	0.5	1	1	ABOVE PREMIUM
3	1	1820017999	BUD LIGHT 12/8 CAN	1.0	2	1	PREMIUM
4	1	1820053047	BUD LIGHT 12/12 CAN	1.0	2	1	PREMIUM
5	1	1820011047	BUD 12/12 CAN	1.0	2	1	PREMIUM
6	1	1820008981	BUD 8/16 CAN	0.3	1	1	PREMIUM
7	1	7199030120	COORS LIGHT 3/24 CAN	1.0	4	1	PREMIUM
1	1	7199000008	COORS LIGHT 6/12 CAN	0.5	2	1	PREMIUM
2	1	7199000048	COORS LIGHT 12/12 CAN	1.0	2	1	PREMIUM
3	1	3410057636	LITE 12/12 CAN	1.0	2	1	PREMIUM
4	1	3410001509	HIGH LIFE 12/12 BTL	0.5	1	1	ECONOMY
5	1	3410001636	HIGH LIFE 12/12 CAN	1.0	2	1	ECONOMY
6	1	1820028443	NATURAL ICE 15/12 CAN	1.0	2	1	ECONOMY

Segment # 2 : 2_1 DEPTH: 12 In WIDTH: 192 In DISTANCE FROM TOP OF BASE SHELF TO BOTTOM OF SHELF:45.00 In

POS	# FAC	UPC	NAME	CASES	CAPACITY	UNITS HIGH	Category
1	1	81760601000	CAPTAIN LAWRENCE FRESHCHESTER 6/12 BTL	0.5	2	1	ABOVE PREMIUM
2	1	81760601020	CAPTAIN LAWRENCE IPA 6/12 BTL	0.5	2	1	ABOVE PREMIUM
3	2	60690500830	ITHACA FLOWER POWER 6/12 BTL	1.0	4	2	ABOVE PREMIUM
4	2	81957801006	TWO ROADS ROAD 2 RUIN 6/12 BTL	1.0	4	2	ABOVE PREMIUM
1	1	7199009511	BLUE MOON BELGIAN WHITE 6/12 BTL	0.5	2	1	ABOVE PREMIUM
2	2	60690500830	ITHACA FLOWER POWER 6/12 BTL	1.0	4	2	ABOVE PREMIUM
3	1	3410051605	LEINIES SEASONAL SHANDY 6/12 BTL	0.5	2	1	ABOVE PREMIUM
4	1	1820013986	SHOCK TOP BELGIAN WHITE 6/12 BTL	0.5	2	1	ABOVE PREMIUM
5	2	88715100094	CONEY ISLAND MERMAID PILSNER 6/12 BTL	1.0	4	2	ABOVE PREMIUM
1	2	8834510151	STRONGBOW GOLD 6/11.2 BTL	1.0	4	2	ABOVE PREMIUM
2	1	78615000001	STELLA ARTOIS 6/11.2 BTL	0.5	2	1	ABOVE PREMIUM
3	1	7289000011	HEINEKEN 6/12 BTL	0.5	2	1	ABOVE PREMIUM
4	1	8066095625	CORONA LIGHT 6/12 BTL	0.5	2	1	ABOVE PREMIUM
5	1	8066095605	CORONA 6/12 BTL	0.5	2	1	ABOVE PREMIUM
1	1	8066095765	MODELO ESPECIAL 6/12 BTL	0.3	1	1	ABOVE PREMIUM
2	1	8066095785	MODELO NEGRA 6/12 BTL	0.3	1	1	ABOVE PREMIUM
3	2	7231163012	DOS EQUIS 6/12 BTL	1.0	4	2	ABOVE PREMIUM
4	1	1820005989	MICHELOB ULTRA 6/12 BTL	0.5	2	1	ABOVE PREMIUM
5	1	7031001542	PURA STILL BLACKBERRY 6/12 BTL	0.5	2	1	ABOVE PREMIUM

REVERSE VIEW (ONLY IF NEEDED)





CVS # 10038 WARM

Reset Timing 2019 SPRING

Address: 1905 ROUTE 6 | City: CARMEL | State: NY

REVERSE VIEW (ONLY IF NEEDED)

Segment:
1 of 4



Segment # 2 : 2_4 0.00 In

POS	UPC	NAME
1	7861500014	STELLA ARTOIS 12/ 11.2 BTL
2	7289000159	HEINEKEN LIGHT 12/ 12 BTL
3	7289000016	HEINEKEN 12/ 12 BTL
4	8066095675	CORONA LIGHT 12/ 12 BTL
5	8066095615	CORONA 12/ 12 BTL
6	8066095680	CORONA 18/ 12 BTL

Segment # 2 : 2_3 21.00 In

POS	UPC	NAME
1	8769210014	SAMUEL ADAMS BOSTON LAGER 12/ 12 BTL
2	8769200129	SAMUEL ADAMS REBEL IPA 12/ 12 BTL
3	7199009554	BLUE MOON BREWMASTER VARIETY 12/ 12 BTL
4	8769200017	ANGRY ORCHARD EXPLORER PACK 12/ 12 BTL
5	8769283134	TWISTED TEA ORIGINAL 12/ 12 CAN
6	8769283103	TWISTED TEA ORIGINAL 12/ 12 BTL

Segment # 2 : 2_2 33.00 In

POS	UPC	NAME
1	85375900031	SOUTHERN TIER PACK OF PALES 12/ 12 BTL
2	7199009516	BLUE MOON BELGIAN WHITE 12/ 12 BTL
3	64286090024	FOUNDERS ALL DAY SESSION IPA 15/ 12 CAN
4	63598512998	MIKES HARD VARIETY PACK 12/ 11.2 BTL
5	63598510062	MIKES HARD LEMONADE 6/ 11.2 BTL
6	63598506744	MIKES HARD BLACK CHERRY LEMONADE 6/ 11.2 BTL

Segment # 2 : 2_1 45.00 In

POS	UPC	NAME
1	81760601000	CAPTAIN LAWRENCE FRESHCHESTER 6/ 12 BTL
2	81760601020	CAPTAIN LAWRENCE IPA 6/ 12 BTL
3	60690500830	ITHACA FLOWER POWER 6/ 12 BTL
4	81957801006	TWO ROADS ROAD 2 RUIN 6/ 12 BTL



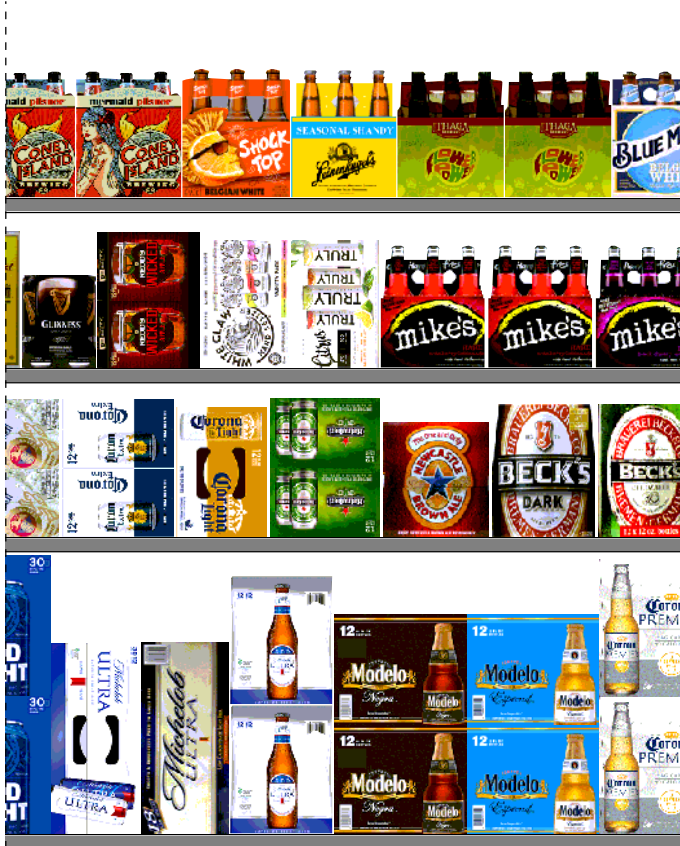
CVS # 10038 WARM

Reset Timing 2019 SPRING

Address: 1905 ROUTE 6 | City: CARMEL | State: NY

REVERSE VIEW (ONLY IF NEEDED)

Segment:
2 of 4



Segment # 2 : 2_4 0.00 In

POS	UPC	NAME
1	3354495042	CORONA PREMIER 12/ 12 BTL
2	8066095757	MODELO ESPECIAL 12/ 12 BTL
3	8066095787	MODELO NEGRA 12/ 12 BTL
4	1820005990	MICHELOB ULTRA 12/ 12 BTL
5	1820096721	MICHELOB ULTRA 18/ 12 CAN
6	1820096550	MICHELOB ULTRA 30/ 12 CAN

Segment # 2 : 2_3 21.00 In

POS	UPC	NAME
1	8248812300	BECKS 12/ 12 BTL
2	8248812400	BECKS DARK 12/ 12 BTL
3	8834510053	NEWCASTLE BROWN ALE 12/ 12 BTL
4	7289000020	HEINEKEN 12/ 12 CAN
5	8066095621	CORONA LIGHT 12/ 12 CAN
6	8066095695	CORONA 12/ 12 CAN

Segment # 2 : 2_2 33.00 In

POS	UPC	NAME
1	63598560611	MIKES HARD CRANBERRY PASSIONFRUIT LEMONADE 6/ 11.2 BTL
2	8769200424	TRULY VARIETY PACK 12/ 12 CAN
3	63598554890	WHITE CLAW VARIETY PACK 12/ 12 CAN
4	3410000342	REDD'S WICKED 12/ 10 CAN
5	8382012360	GUINNESS DRAUGHT STOUT 4/ 14.9 CAN

Segment # 2 : 2_1 45.00 In

POS	UPC	NAME
1	7199009511	BLUE MOON BELGIAN WHITE 6/ 12 BTL
2	60690500830	ITHACA FLOWER POWER 6/ 12 BTL
3	3410051605	LEINIES SEASONAL SHANDY 6/ 12 BTL
4	1820013986	SHOCK TOP BELGIAN WHITE 6/ 12 BTL
5	88715100094	CONEY ISLAND MERMAID PILSNER 6/ 12 BTL



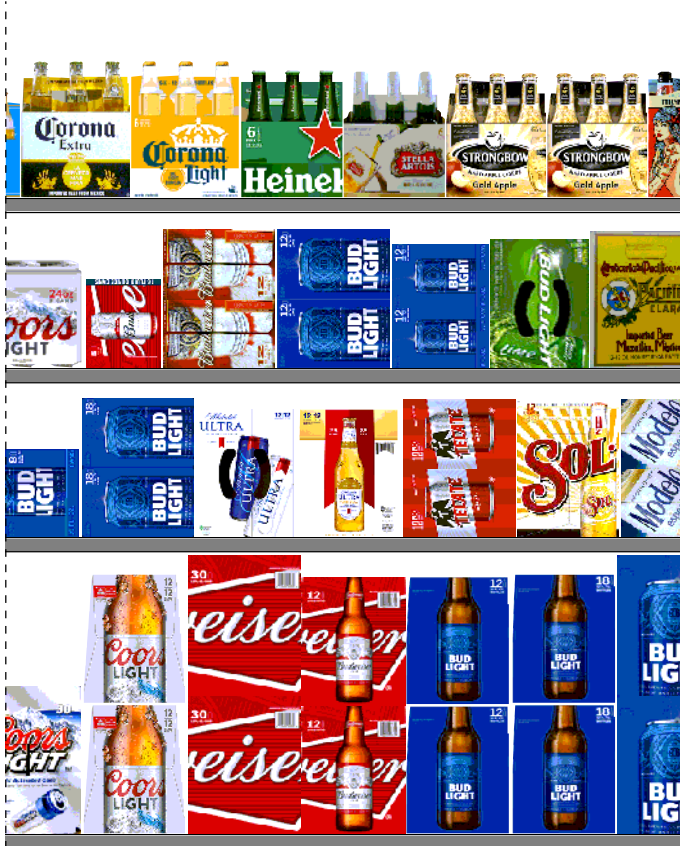
CVS # 10038 WARM

Reset Timing 2019 SPRING

Address: 1905 ROUTE 6 | City: CARMEL | State: NY

REVERSE VIEW (ONLY IF NEEDED)

Segment:
3 of 4



Segment # 2 : 2_4 0.00 In

POS	UPC	NAME
1	1820053030	BUD LIGHT 30/ 12 CAN
2	1820053308	BUD LIGHT 18/ 12 BTL
3	1820000769	BUD LIGHT 12/ 12 BTL
4	1820000771	BUD 12/ 12 BTL
5	1820011030	BUD 30/ 12 CAN
6	7199030069	COORS LIGHT 12/ 12 BTL
7	7199030030	COORS LIGHT 30/ 12 CAN

Segment # 2 : 2_3 21.00 In

POS	UPC	NAME
1	8066095715	MODELO ESPECIAL 12/ 12 CAN
2	7231123021	SOL 12/ 12 BTL
3	8982690033	TECATE 12/ 12 CAN
4	1820020083	MICHELOB ULTRA PURE GOLD 12/ 12 BTL
5	1820006991	MICHELOB ULTRA 12/ 12 CAN
6	1820053218	BUD LIGHT 18/ 12 CAN
7	1820008989	BUD LIGHT 8/ 16 CAN

Segment # 2 : 2_2 33.00 In

POS	UPC	NAME
1	8066095315	PACIFICO 12/ 12 BTL
2	1820015983	BUD LIGHT LIME 12/ 12 CAN
3	1820017999	BUD LIGHT 12/ 8 CAN
4	1820053047	BUD LIGHT 12/ 12 CAN
5	1820011047	BUD 12/ 12 CAN
6	1820008981	BUD 8/ 16 CAN
7	7199030120	COORS LIGHT 3/ 24 CAN

Segment # 2 : 2_1 45.00 In

POS	UPC	NAME
1	8834510151	STRONGBOW GOLD 6/ 11.2 BTL
2	78615000001	STELLA ARTOIS 6/ 11.2 BTL
3	7289000011	HEINEKEN 6/ 12 BTL
4	8066095625	CORONA LIGHT 6/ 12 BTL
5	8066095605	CORONA 6/ 12 BTL



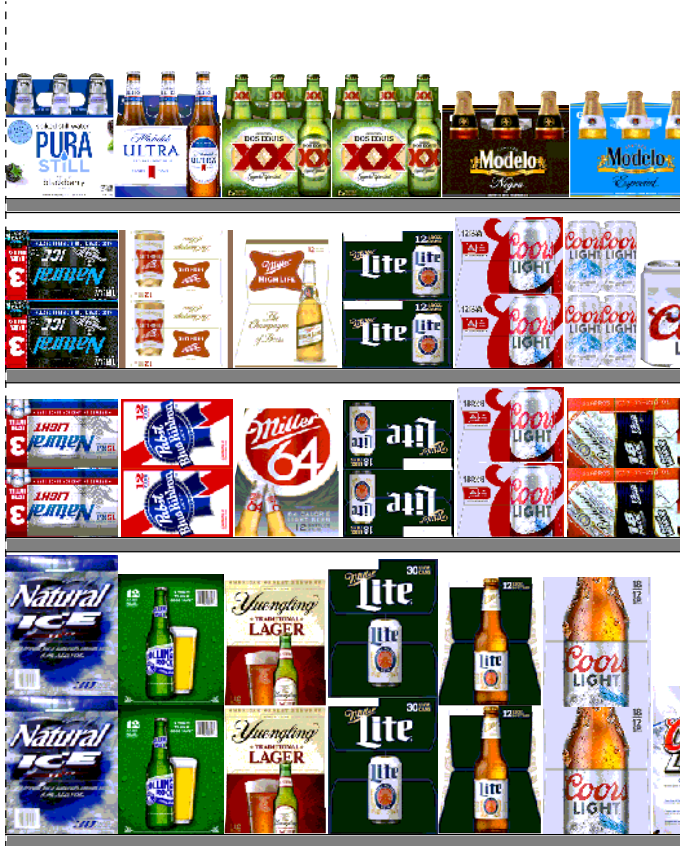
CVS # 10038 WARM

Reset Timing 2019 SPRING

Address: 1905 ROUTE 6 | City: CARMEL | State: NY

REVERSE VIEW (ONLY IF NEEDED)

Segment:
4 of 4



Segment # 2 : 2_4 0.00 In

POS	UPC	NAME
1	7199030078	COORS LIGHT 18/ 12 BTL
2	3410057509	LITE 12/ 12 BTL
3	3410057341	LITE 30/ 12 CAN
4	8992427896	YUENGLING LAGER 12/ 12 BTL
5	7143945712	ROLLING ROCK 12/ 12 BTL
6	1820027030	NATURAL ICE 30/ 12 CAN

Segment # 2 : 2_3 21.00 In

POS	UPC	NAME
1	1820011218	BUD 18/ 12 CAN
2	7199030017	COORS LIGHT 18/ 12 CAN
3	3410057340	LITE 18/ 12 CAN
4	3410015509	MILLER 64 12/ 12 BTL
5	2210000170	PABST 12/ 12 CAN
6	1820020077	NATURAL LIGHT 15/ 12 CAN

Segment # 2 : 2_2 33.00 In

POS	UPC	NAME
1	7199000008	COORS LIGHT 6/ 12 CAN
2	7199000048	COORS LIGHT 12/ 12 CAN
3	3410057636	LITE 12/ 12 CAN
4	3410001509	HIGH LIFE 12/ 12 BTL
5	3410001636	HIGH LIFE 12/ 12 CAN
6	1820028443	NATURAL ICE 15/ 12 CAN

Segment # 2 : 2_1 45.00 In

POS	UPC	NAME
1	8066095765	MODELO ESPECIAL 6/ 12 BTL
2	8066095785	MODELO NEGRA 6/ 12 BTL
3	7231163012	DOS EQUIS 6/ 12 BTL
4	1820005989	MICHELOB ULTRA 6/ 12 BTL
5	7031001542	PURA STILL BLACKBERRY 6/ 12 BTL



CVS # 10038 WARM

Address: 1905 ROUTE 6 | City: CARMEL | State: NY

Chain/StoreNumer: CVS - EAST 10038

Reset Name: 2019 SPRING

Planogram Name: 10038_16ft_OPEN_WARM

CVS PHARMA... Store # 10038 H: 5 ft W: 16 ft D: 2 ft # of segments: 4

Name: 2_1 W:192.00 in D:12.00 in Avail Space: 0.16 in Ht Space: 14.00 in

ID	UPC	Barcode	Name	Category	HFacings	Orientation	Units
15955	81760601000	8 17606 01000 1	CAPTAIN LAWRENCE FRESHC...	ABOVE PREMIUM	1	Front	2
15961	81760601020	8 17606 01020 9	CAPTAIN LAWRENCE IPA 6/12 ...	ABOVE PREMIUM	1	Front	2
5177	60690500830	6 06905 00830 3	ITHACA FLOWER POWER 6/12 ...	ABOVE PREMIUM	2	Front	4
16140	81957801006	8 19578 01006 5	TWO ROADS ROAD 2 RUIN 6/1...	ABOVE PREMIUM	2	Front	4
10180	7199009511	0 71990 09511 6	BLUE MOON BELGIAN WHITE 6...	ABOVE PREMIUM	1	Front	2
5177	60690500830	6 06905 00830 3	ITHACA FLOWER POWER 6/12 ...	ABOVE PREMIUM	2	Front	4
3492	3410051605	0 34100 51605 5	LEINIES SEASONAL SHANDY 6...	ABOVE PREMIUM	1	Front	2
1345	1820013986	0 18200 13986 4	SHOCK TOP BELGIAN WHITE 6...	ABOVE PREMIUM	1	Front	2
22632	88715100094	8 87151 00094 9	CONEY ISLAND MERMAID PILS...	ABOVE PREMIUM	2	Front	4
22457	8834510151	0 88345 10151 4	STRONGBOW GOLD 6/11.2 BTL	ABOVE PREMIUM	2	Front	4
14089	78615000001	7 86150 00001 4	STELLA ARTOIS 6/11.2 BTL	ABOVE PREMIUM	1	Front	2
11298	7289000011	0 72890 00011 8	HEINEKEN 6/12 BTL	ABOVE PREMIUM	1	Front	2
15408	8066095625	0 80660 95625 1	CORONA LIGHT 6/12 BTL	ABOVE PREMIUM	1	Front	2
15400	8066095605	0 80660 95605 3	CORONA 6/12 BTL	ABOVE PREMIUM	1	Front	2
15442	8066095765	0 80660 95765 4	MODELO ESPECIAL 6/12 BTL	ABOVE PREMIUM	1	Front	1
15448	8066095785	0 80660 95785 2	MODELO NEGRA 6/12 BTL	ABOVE PREMIUM	1	Front	1



CVS # 10038 WARM

Address: 1905 ROUTE 6 | City: CARMEL | State: NY

Chain/StoreNumer: CVS - EAST 10038

Reset Name: 2019 SPRING

Planogram Name: 10038_16ft_OPEN_WARM

10813	7231163012		DOS EQUIS 6/12 BTL	ABOVE PREMIUM	2	Front	4
1227	1820005989		MICHELOB ULTRA 6/12 BTL	ABOVE PREMIUM	1	Front	2
89181	7031001542		PURA STILL BLACKBERRY 6/12...	ABOVE PREMIUM	1	Front	2

Name: 2_2 W:192.00 in D:12.00 in Avail Space: 4.88 in Ht Space: 11.00 in

ID	UPC	Barcode	Name	Category	HFacings	Orientation	Units
19137	85375900031		SOUTHERN TIER PACK OF PA...	ABOVE PREMIUM	1	Side	1
10183	7199009516		BLUE MOON BELGIAN WHITE 1...	ABOVE PREMIUM	1	Side	1
7044	64286090024		FOUNDERS ALL DAY SESSION...	ABOVE PREMIUM	1	Side 90	4
6433	63598512998		MIKES HARD VARIETY PACK 1...	ABOVE PREMIUM	1	Side	1
6413	63598510062		MIKES HARD LEMONADE 6/11....	ABOVE PREMIUM	1	Front	2
6402	63598506744		MIKES HARD BLACK CHERRY L...	ABOVE PREMIUM	2	Front	4
6535	63598560611		MIKES HARD CRANBERRY PA...	ABOVE PREMIUM	2	Front	4
43031	8769200424		TRULY VARIETY PACK 12/12 C...	ABOVE PREMIUM	1	Front 90	1
45151	63598554890		WHITE CLAW VARIETY PACK 1...	ABOVE PREMIUM	1	Front 90	1
2951	3410000342		REDD'S WICKED 12/10 CAN	ABOVE PREMIUM	1	Side 90	2
17293	8382012360		GUINNESS DRAUGHT STOUT ...	ABOVE PREMIUM	1	Front	2
15390	8066095315		PACIFICO 12/12 BTL	ABOVE PREMIUM	1	Side	1
1378	1820015983		BUD LIGHT LIME 12/12 CAN	ABOVE PREMIUM	1	Top 90	1
1419	1820017999		BUD LIGHT 12/8 CAN	PREMIUM	1	Side 90	2



CVS # 10038 WARM

Address: 1905 ROUTE 6 | City: CARMEL | State: NY

Chain/StoreNumer: CVS - EAST 10038

Reset Name: 2019 SPRING

Planogram Name: 10038_16ft_OPEN_WARM

1659	1820053047		BUD LIGHT 12/12 CAN	PREMIUM	1	Side 90	2
1297	1820011047		BUD 12/12 CAN	PREMIUM	1	Side 90	2
1256	1820008981		BUD 8/16 CAN	PREMIUM	1	Side 90	1
10372	7199030120		COORS LIGHT 3/24 CAN	PREMIUM	1	Front	4
10155	7199000008		COORS LIGHT 6/12 CAN	PREMIUM	1	Side	2
10164	7199000048		COORS LIGHT 12/12 CAN	PREMIUM	1	Side 90	2
3579	3410057636		LITE 12/12 CAN	PREMIUM	1	Side 90	2
3198	3410001509		HIGH LIFE 12/12 BTL	ECONOMY	1	Side	1
3202	3410001636		HIGH LIFE 12/12 CAN	ECONOMY	1	Side 90	2
66288	1820028443		NATURAL ICE 15/12 CAN	ECONOMY	1	Side 90	2

Name: 2_3 W:192.00 in D:12.00 in Avail Space: 5.80 in Ht Space: 11.00 in

ID	UPC	Barcode	Name	Category	HFacings	Orientation	Units
21957	8769210014		SAMUEL ADAMS BOSTON LAG...	ABOVE PREMIUM	1	Side	1
21861	8769200129		SAMUEL ADAMS REBEL IPA 12...	ABOVE PREMIUM	1	Side	1
10202	7199009554		BLUE MOON BREWMASTER V...	ABOVE PREMIUM	1	Side	1
21815	8769200017		ANGRY ORCHARD EXPLORER ...	ABOVE PREMIUM	1	Side	1
22096	8769283134		TWISTED TEA ORIGINAL 12/12 ...	ABOVE PREMIUM	1	Side 90	2
22093	8769283103		TWISTED TEA ORIGINAL 12/12 ...	ABOVE PREMIUM	1	Side	1
16691	8248812300		BECKS 12/12 BTL	ABOVE PREMIUM	1	Side	1



CVS # 10038 WARM

Address: 1905 ROUTE 6 | City: CARMEL | State: NY

Chain/StoreNumer: CVS - EAST 10038

Reset Name: 2019 SPRING

Planogram Name: 10038_16ft_OPEN_WARM

16701	8248812400		0 82488 12400 3	BECKS DARK 12/12 BTL	ABOVE PREMIUM	1	Side	1
22431	8834510053		0 88345 10053 1	NEWCASTLE BROWN ALE 12/1...	ABOVE PREMIUM	1	Side	1
11301	7289000020		0 72890 00020 0	HEINEKEN 12/12 CAN	ABOVE PREMIUM	1	Side 90	2
15406	8066095621		0 80660 95621 3	CORONA LIGHT 12/12 CAN	ABOVE PREMIUM	1	Top 90	1
15426	8066095695		0 80660 95695 4	CORONA 12/12 CAN	ABOVE PREMIUM	1	Side 90	2
15429	8066095715		0 80660 95715 9	MODELO ESPECIAL 12/12 CAN	ABOVE PREMIUM	1	Side 90	2
10790	7231123021		0 72311 23021 6	SOL 12/12 BTL	ABOVE PREMIUM	1	Side	1
23789	8982690033		0 89826 90033 6	TECATE 12/12 CAN	ABOVE PREMIUM	1	Side 90	2
65828	1820020083		0 18200 20083 0	MICHELOB ULTRA PURE GOLD...	ABOVE PREMIUM	1	Side	1
1241	1820006991		0 18200 06991 8	MICHELOB ULTRA 12/12 CAN	ABOVE PREMIUM	1	Top 90	1
1667	1820053218		0 18200 53218 4	BUD LIGHT 18/12 CAN	PREMIUM	1	Side 90	2
1262	1820008989		0 18200 08989 3	BUD LIGHT 8/16 CAN	PREMIUM	1	Side 90	1
1307	1820011218		0 18200 11218 8	BUD 18/12 CAN	PREMIUM	1	Side 90	2
10329	7199030017		0 71990 30017 3	COORS LIGHT 18/12 CAN	PREMIUM	1	Side 90	2
3552	3410057340		0 34100 57340 9	LITE 18/12 CAN	PREMIUM	1	Side 90	2
3305	3410015509		0 34100 15509 4	MILLER 64 12/12 BTL	PREMIUM	1	Side	1
2241	2210000170		0 22100 00170 1	PABST 12/12 CAN	ECONOMY	1	Side 90	2
61975	1820020077		0 18200 20077 9	NATURAL LIGHT 15/12 CAN	ECONOMY	1	Side 90	2



CVS # 10038 WARM

Address: 1905 ROUTE 6 | City: CARMEL | State: NY

Chain/StoreNumer: CVS - EAST 10038

Reset Name: 2019 SPRING

Planogram Name: 10038_16ft_OPEN_WARM

Name: 2_4 W:192.00 in D:12.00 in Avail Space: 2.47 in Ht Space: 20.00 in

ID	UPC	Barcode	Name	Category	HFacings	Orientation	Units
14094	78615000014	7 86150 00014 4	STELLA ARTOIS 12/11.2 BTL	ABOVE PREMIUM	1	Side	2
11342	7289000159	0 72890 00159 7	HEINEKEN LIGHT 12/12 BTL	ABOVE PREMIUM	1	Side	2
11300	7289000016	0 72890 00016 3	HEINEKEN 12/12 BTL	ABOVE PREMIUM	1	Side	2
15416	8066095675	0 80660 95675 6	CORONA LIGHT 12/12 BTL	ABOVE PREMIUM	1	Side	2
15403	8066095615	0 80660 95615 2	CORONA 12/12 BTL	ABOVE PREMIUM	1	Side	2
15417	8066095680	0 80660 95680 0	CORONA 18/12 BTL	ABOVE PREMIUM	1	Side	2
44952	3354495042	0 33544 95042 5	CORONA PREMIER 12/12 BTL	ABOVE PREMIUM	1	Side	2
15436	8066095757	0 80660 95757 9	MODELO ESPECIAL 12/12 BTL	ABOVE PREMIUM	1	Side	4
15449	8066095787	0 80660 95787 6	MODELO NEGRA 12/12 BTL	ABOVE PREMIUM	1	Side	2
1228	1820005990	0 18200 05990 2	MICHELOB ULTRA 12/12 BTL	ABOVE PREMIUM	1	Side	2
1850	1820096721	0 18200 96721 4	MICHELOB ULTRA 18/12 CAN	ABOVE PREMIUM	1	Top 90	2
1823	1820096550	0 18200 96550 0	MICHELOB ULTRA 30/12 CAN	ABOVE PREMIUM	1	Top 90	1
1656	1820053030	0 18200 53030 2	BUD LIGHT 30/12 CAN	PREMIUM	1	Side	2
1670	1820053308	0 18200 53308 2	BUD LIGHT 18/12 BTL	PREMIUM	1	Side	2
1056	1820000769	0 18200 00769 9	BUD LIGHT 12/12 BTL	PREMIUM	1	Side	2
1058	1820000771	0 18200 00771 2	BUD 12/12 BTL	PREMIUM	1	Side	2
1292	1820011030	0 18200 11030 6	BUD 30/12 CAN	PREMIUM	1	Side	2



CVS # 10038 WARM

Address: 1905 ROUTE 6 | City: CARMEL | State: NY

Chain/StoreNumer: CVS - EAST 10038

Reset Name: 2019 SPRING

Planogram Name: 10038_16ft_OPEN_WARM

10348	7199030069		COORS LIGHT 12/12 BTL	PREMIUM	1	Side	2
10336	7199030030		COORS LIGHT 30/12 CAN	PREMIUM	1	Side	1
10352	7199030078		COORS LIGHT 18/12 BTL	PREMIUM	1	Side	2
3565	3410057509		LITE 12/12 BTL	PREMIUM	1	Side	2
3553	3410057341		LITE 30/12 CAN	PREMIUM	1	Side	2
23902	8992427896		YUENGLING LAGER 12/12 BTL	PREMIUM	1	Side	2
9905	7143945712		ROLLING ROCK 12/12 BTL	ECONOMY	1	Side	2
1609	1820027030		NATURAL ICE 30/12 CAN	ECONOMY	1	Side	2