





CVS # 1770 COLD

Address: 325 MAMARONECK AVE | City: WHITE PLAINS | State: NY

Chain/StoreNumer: CVS - EAST 1770

Reset Name: 2019 SPRING

Planogram Name: 1770\_9\_DOOR\_COLD

Segment # 1		: 1_4		DEPTH: 23 in	WIDTH: 23 in	DISTANCE FROM TOP OF BASE SHELF TO BOTTOM OF SHELF:2.00 in		
POS #	FAC	UPC	NAME		CASES	CAPACITY	UNITS HIGH	Category
1	2	8066095615	CORONA 12/12 BTL		4.0	8	2	ABOVE PREMIUM
Segment # 1		: 1_3		DEPTH: 23 in	WIDTH: 23 in	DISTANCE FROM TOP OF BASE SHELF TO BOTTOM OF SHELF:21.00 in		
POS #	FAC	UPC	NAME		CASES	CAPACITY	UNITS HIGH	Category
1	2	8066095615	CORONA 12/12 BTL		2.0	4	2	ABOVE PREMIUM
Segment # 1		: 1_2		DEPTH: 23 in	WIDTH: 23 in	DISTANCE FROM TOP OF BASE SHELF TO BOTTOM OF SHELF:33.00 in		
POS #	FAC	UPC	NAME		CASES	CAPACITY	UNITS HIGH	Category
1	1	8066095621	CORONA LIGHT 12/12 CAN		1.5	3	1	ABOVE PREMIUM
2	2	8066095675	CORONA LIGHT 12/12 BTL		2.0	4	2	ABOVE PREMIUM
Segment # 1		: 1_1		DEPTH: 23 in	WIDTH: 23 in	DISTANCE FROM TOP OF BASE SHELF TO BOTTOM OF SHELF:45.00 in		
POS #	FAC	UPC	NAME		CASES	CAPACITY	UNITS HIGH	Category
1	1	8066095625	CORONA LIGHT 6/12 BTL		0.5	2	1	ABOVE PREMIUM
2	2	8066095605	CORONA 6/12 BTL		1.0	4	2	ABOVE PREMIUM
3	1	8066095695	CORONA 12/12 CAN		1.0	2	1	ABOVE PREMIUM
Segment # 2		: 2_4		DEPTH: 23 in	WIDTH: 23 in	DISTANCE FROM TOP OF BASE SHELF TO BOTTOM OF SHELF:2.00 in		
POS #	FAC	UPC	NAME		CASES	CAPACITY	UNITS HIGH	Category
1	2	8066095615	CORONA 12/12 BTL		4.0	8	2	ABOVE PREMIUM
Segment # 2		: 2_3		DEPTH: 23 in	WIDTH: 23 in	DISTANCE FROM TOP OF BASE SHELF TO BOTTOM OF SHELF:21.00 in		
POS #	FAC	UPC	NAME		CASES	CAPACITY	UNITS HIGH	Category
1	2	8066095615	CORONA 12/12 BTL		2.0	4	2	ABOVE PREMIUM
Segment # 2		: 2_2		DEPTH: 23 in	WIDTH: 23 in	DISTANCE FROM TOP OF BASE SHELF TO BOTTOM OF SHELF:33.00 in		
POS #	FAC	UPC	NAME		CASES	CAPACITY	UNITS HIGH	Category
1	2	8066095615	CORONA 12/12 BTL		2.0	4	2	ABOVE PREMIUM
Segment # 2		: 2_1		DEPTH: 23 in	WIDTH: 23 in	DISTANCE FROM TOP OF BASE SHELF TO BOTTOM OF SHELF:45.00 in		
POS #	FAC	UPC	NAME		CASES	CAPACITY	UNITS HIGH	Category
1	1	7231123021	SOL 12/12 BTL		1.5	3	1	ABOVE PREMIUM
2	1	3354495042	CORONA PREMIER 12/12 BTL		1.0	2	1	ABOVE PREMIUM
3	1	3354495041	CORONA PREMIER 6/12 BTL		0.5	2	1	ABOVE PREMIUM
Segment # 3		: 3_4		DEPTH: 23 in	WIDTH: 23 in	DISTANCE FROM TOP OF BASE SHELF TO BOTTOM OF SHELF:2.00 in		
POS #	FAC	UPC	NAME		CASES	CAPACITY	UNITS HIGH	Category
1	1	8066095680	CORONA 18/12 BTL		2.0	2	1	ABOVE PREMIUM



CVS # 1770 COLD

Address: 325 MAMARONECK AVE | City: WHITE PLAINS | State: NY

Chain/StoreNumer: CVS - EAST 1770

Reset Name: 2019 SPRING

Planogram Name: 1770\_9\_DOOR\_COLD

2 1 8066095757 MODELO ESPECIAL 12/12 BTL 2.0 4 1 ABOVE PREMIUM

Segment # 3 : 3\_3 DEPTH: 23 in WIDTH: 23 in DISTANCE FROM TOP OF BASE SHELF TO BOTTOM OF SHELF:21.00 in

POS #	FAC	UPC	NAME	CASES	CAPACITY	UNITS HIGH	Category
1	1	3354495053	CORONA FAMILIAR 12/12 BTL	1.0	2	1	ABOVE PREMIUM
2	1	8066095757	MODELO ESPECIAL 12/12 BTL	1.0	2	1	ABOVE PREMIUM

Segment # 3 : 3\_2 DEPTH: 23 in WIDTH: 23 in DISTANCE FROM TOP OF BASE SHELF TO BOTTOM OF SHELF:33.00 in

POS #	FAC	UPC	NAME	CASES	CAPACITY	UNITS HIGH	Category
1	1	8066095787	MODELO NEGRA 12/12 BTL	0.5	1	1	ABOVE PREMIUM
2	2	8066095765	MODELO ESPECIAL 6/12 BTL	1.0	4	2	ABOVE PREMIUM

Segment # 3 : 3\_1 DEPTH: 23 in WIDTH: 23 in DISTANCE FROM TOP OF BASE SHELF TO BOTTOM OF SHELF:44.00 in

POS #	FAC	UPC	NAME	CASES	CAPACITY	UNITS HIGH	Category
1	1	8066095785	MODELO NEGRA 6/12 BTL	0.5	2	1	ABOVE PREMIUM
2	3	8066095715	MODELO ESPECIAL 12/12 CAN	3.0	6	3	ABOVE PREMIUM

Segment # 4 : 4\_4 DEPTH: 23 in WIDTH: 23 in DISTANCE FROM TOP OF BASE SHELF TO BOTTOM OF SHELF:2.00 in

POS #	FAC	UPC	NAME	CASES	CAPACITY	UNITS HIGH	Category
1	1	8066095757	MODELO ESPECIAL 12/12 BTL	1.0	2	1	ABOVE PREMIUM
2	1	8066095757	MODELO ESPECIAL 12/12 BTL	2.0	4	1	ABOVE PREMIUM

Segment # 4 : 4\_3 DEPTH: 23 in WIDTH: 23 in DISTANCE FROM TOP OF BASE SHELF TO BOTTOM OF SHELF:21.00 in

POS #	FAC	UPC	NAME	CASES	CAPACITY	UNITS HIGH	Category
1	1	8066095757	MODELO ESPECIAL 12/12 BTL	0.5	1	1	ABOVE PREMIUM
2	1	8066095757	MODELO ESPECIAL 12/12 BTL	1.0	2	1	ABOVE PREMIUM

Segment # 4 : 4\_2 DEPTH: 23 in WIDTH: 23 in DISTANCE FROM TOP OF BASE SHELF TO BOTTOM OF SHELF:33.00 in

POS #	FAC	UPC	NAME	CASES	CAPACITY	UNITS HIGH	Category
1	1	8066095757	MODELO ESPECIAL 12/12 BTL	1.0	2	1	ABOVE PREMIUM
2	1	8982690033	TECATE 12/12 CAN	1.0	2	1	ABOVE PREMIUM
3	1	7231163012	DOS EQUIS 6/12 BTL	0.5	2	1	ABOVE PREMIUM

Segment # 4 : 4\_1 DEPTH: 23 in WIDTH: 23 in DISTANCE FROM TOP OF BASE SHELF TO BOTTOM OF SHELF:44.00 in

POS #	FAC	UPC	NAME	CASES	CAPACITY	UNITS HIGH	Category
1	4	8066095715	MODELO ESPECIAL 12/12 CAN	4.0	8	4	ABOVE PREMIUM

Segment # 5 : 5\_4 DEPTH: 23 in WIDTH: 23 in DISTANCE FROM TOP OF BASE SHELF TO BOTTOM OF SHELF:2.00 in

POS #	FAC	UPC	NAME	CASES	CAPACITY	UNITS HIGH	Category
1	1	8248812300	BECKS 12/12 BTL	2.0	4	1	ABOVE PREMIUM
2	2	78615000014	STELLA ARTOIS 12/11.2 BTL	4.0	8	2	ABOVE PREMIUM

Segment # 5 : 5\_3 DEPTH: 23 in WIDTH: 23 in DISTANCE FROM TOP OF BASE SHELF TO BOTTOM OF SHELF:23.00 in



CVS # 1770 COLD

Address: 325 MAMARONECK AVE | City: WHITE PLAINS | State: NY

Chain/StoreNumer: CVS - EAST 1770

Reset Name: 2019 SPRING

Planogram Name: 1770\_9\_DOOR\_COLD

POS	# FAC	UPC	NAME	CASES	CAPACITY	UNITS HIGH	Category
1	1	63598554890	WHITE CLAW VARIETY PACK 12/12 CAN	1.0	2	1	ABOVE PREMIUM
2	1	3410051681	CAPE LINE VARIETY PACK 12/12 CAN	1.0	2	1	ABOVE PREMIUM
3	1	78615000001	STELLA ARTOIS 6/11.2 BTL	0.8	3	1	ABOVE PREMIUM
4	1	8769230050	SAMUEL ADAMS SEASONAL 6/12 BTL (A)	0.8	3	1	ABOVE PREMIUM

Segment # 5 : 5\_2 DEPTH: 23 in WIDTH: 23 in DISTANCE FROM TOP OF BASE SHELF TO BOTTOM OF SHELF:34.00 in

POS	# FAC	UPC	NAME	CASES	CAPACITY	UNITS HIGH	Category
1	1	3354400013	CORONA REFRESCA VARIETY 12/12 CAN	1.0	2	1	ABOVE PREMIUM
2	1	60690500830	ITHACA FLOWER POWER 6/12 BTL	0.8	3	1	ABOVE PREMIUM
3	1	63848900029	DOGFISH HEAD 60 MINUTE IPA 6/12 BTL	0.8	3	1	ABOVE PREMIUM
4	1	8769210012	SAMUEL ADAMS BOSTON LAGER 6/12 BTL	0.8	3	1	ABOVE PREMIUM

Segment # 5 : 5\_1 DEPTH: 23 in WIDTH: 23 in DISTANCE FROM TOP OF BASE SHELF TO BOTTOM OF SHELF:45.00 in

POS	# FAC	UPC	NAME	CASES	CAPACITY	UNITS HIGH	Category
1	1	8834510151	STRONGBOW GOLD 6/11.2 BTL	0.8	3	1	ABOVE PREMIUM
2	1	8769282102	ANGRY ORCHARD CRISP APPLE 6/12 BTL	0.8	3	1	ABOVE PREMIUM
3	1	81760601000	CAPTAIN LAWRENCE FRESHCHESTER 6/12 BTL	0.8	3	1	ABOVE PREMIUM
4	1	81760601020	CAPTAIN LAWRENCE IPA 6/12 BTL	1.0	4	1	ABOVE PREMIUM

Segment # 6 : 6\_4 DEPTH: 23 in WIDTH: 23 in DISTANCE FROM TOP OF BASE SHELF TO BOTTOM OF SHELF:2.00 in

POS	# FAC	UPC	NAME	CASES	CAPACITY	UNITS HIGH	Category
1	3	72890000016	HEINEKEN 12/12 BTL	6.0	12	3	ABOVE PREMIUM

Segment # 6 : 6\_3 DEPTH: 23 in WIDTH: 23 in DISTANCE FROM TOP OF BASE SHELF TO BOTTOM OF SHELF:23.00 in

POS	# FAC	UPC	NAME	CASES	CAPACITY	UNITS HIGH	Category
1	1	72890000020	HEINEKEN 12/12 CAN	1.0	2	1	ABOVE PREMIUM
2	1	72890000011	HEINEKEN 6/12 BTL	0.8	3	1	ABOVE PREMIUM
3	1	72890000159	HEINEKEN LIGHT 12/12 BTL	1.0	2	1	ABOVE PREMIUM
4	1	63598510062	MIKES HARD LEMONADE 6/11.2 BTL	0.8	3	1	ABOVE PREMIUM

Segment # 6 : 6\_2 DEPTH: 23 in WIDTH: 23 in DISTANCE FROM TOP OF BASE SHELF TO BOTTOM OF SHELF:34.00 in

POS	# FAC	UPC	NAME	CASES	CAPACITY	UNITS HIGH	Category
1	1	7199009561	BLUE MOON MANGO WHEAT 6/12 BTL	0.8	3	1	ABOVE PREMIUM
2	1	7199009532	BLUE MOON SEASONAL 6/12 BTL	0.8	3	1	ABOVE PREMIUM
3	1	7199009511	BLUE MOON BELGIAN WHITE 6/12 BTL	0.8	3	1	ABOVE PREMIUM
4	1	7199009516	BLUE MOON BELGIAN WHITE 12/12 BTL	1.0	2	1	ABOVE PREMIUM

Segment # 6 : 6\_1 DEPTH: 23 in WIDTH: 23 in DISTANCE FROM TOP OF BASE SHELF TO BOTTOM OF SHELF:45.00 in

POS	# FAC	UPC	NAME	CASES	CAPACITY	UNITS HIGH	Category
1	1	3061300053	BROOKLYN SEASONAL 6/12 BTL	0.5	2	1	ABOVE PREMIUM
2	1	3061300001	BROOKLYN LAGER 6/12 BTL	0.5	2	1	ABOVE PREMIUM
3	1	75452700022	NEW BELGIUM FAT TIRE 6/12 BTL	1.0	4	1	ABOVE PREMIUM
4	1	1820020079	BUD LIGHT ORANGE 6/12 BTL	0.8	3	1	ABOVE PREMIUM



CVS # 1770 COLD

Address: 325 MAMARONECK AVE | City: WHITE PLAINS | State: NY

Chain/StoreNumer: CVS - EAST 1770

Reset Name: 2019 SPRING

Planogram Name: 1770\_9\_DOOR\_COLD

**Segment # 7 : 7\_4 DEPTH: 23 in WIDTH: 23 in DISTANCE FROM TOP OF BASE SHELF TO BOTTOM OF SHELF:2.00 in**

POS	#	FAC	UPC	NAME	CASES	CAPACITY	UNITS HIGH	Category
1	1		1820053218	BUD LIGHT 18/12 CAN	8.0	8	1	PREMIUM
2	1		1820011047	BUD 12/12 CAN	2.0	4	1	PREMIUM

**Segment # 7 : 7\_3 DEPTH: 23 in WIDTH: 23 in DISTANCE FROM TOP OF BASE SHELF TO BOTTOM OF SHELF:23.00 in**

POS	#	FAC	UPC	NAME	CASES	CAPACITY	UNITS HIGH	Category
1	1		1820096721	MICHELOB ULTRA 18/12 CAN	1.0	1	1	ABOVE PREMIUM
2	1		1820020083	MICHELOB ULTRA PURE GOLD 12/12 BTL	1.0	2	1	ABOVE PREMIUM
3	1		1820053047	BUD LIGHT 12/12 CAN	2.0	4	1	PREMIUM

**Segment # 7 : 7\_2 DEPTH: 23 in WIDTH: 23 in DISTANCE FROM TOP OF BASE SHELF TO BOTTOM OF SHELF:34.00 in**

POS	#	FAC	UPC	NAME	CASES	CAPACITY	UNITS HIGH	Category
1	1		1820005990	MICHELOB ULTRA 12/12 BTL	1.5	3	1	ABOVE PREMIUM
2	1		1820018993	BUD LIGHT PLATINUM 6/12 BTL	0.8	3	1	ABOVE PREMIUM
3	1		1820000769	BUD LIGHT 12/12 BTL	1.0	2	1	PREMIUM

**Segment # 7 : 7\_1 DEPTH: 23 in WIDTH: 23 in DISTANCE FROM TOP OF BASE SHELF TO BOTTOM OF SHELF:45.00 in**

POS	#	FAC	UPC	NAME	CASES	CAPACITY	UNITS HIGH	Category
1	1		1820005989	MICHELOB ULTRA 6/12 BTL	0.8	3	1	ABOVE PREMIUM
2	1		1820008989	BUD LIGHT 8/16 CAN	0.7	2	1	PREMIUM
3	1		1820000833	BUD LIGHT 6/12 BTL	0.8	3	1	PREMIUM
4	1		1820000834	BUD 6/12 BTL	0.8	3	1	PREMIUM

**Segment # 8 : 8\_4 DEPTH: 23 in WIDTH: 23 in DISTANCE FROM TOP OF BASE SHELF TO BOTTOM OF SHELF:2.00 in**

POS	#	FAC	UPC	NAME	CASES	CAPACITY	UNITS HIGH	Category
1	1		1820011218	BUD 18/12 CAN	4.0	4	1	PREMIUM
2	1		7199030017	COORS LIGHT 18/12 CAN	5.0	5	1	PREMIUM
3	1		3410057340	LITE 18/12 CAN	2.0	2	1	PREMIUM

**Segment # 8 : 8\_3 DEPTH: 23 in WIDTH: 23 in DISTANCE FROM TOP OF BASE SHELF TO BOTTOM OF SHELF:23.00 in**

POS	#	FAC	UPC	NAME	CASES	CAPACITY	UNITS HIGH	Category
1	1		1820000771	BUD 12/12 BTL	1.0	2	1	PREMIUM
2	1		7199030069	COORS LIGHT 12/12 BTL	1.0	2	1	PREMIUM
3	1		7199000048	COORS LIGHT 12/12 CAN	1.0	2	1	PREMIUM

**Segment # 8 : 8\_2 DEPTH: 23 in WIDTH: 23 in DISTANCE FROM TOP OF BASE SHELF TO BOTTOM OF SHELF:34.00 in**

POS	#	FAC	UPC	NAME	CASES	CAPACITY	UNITS HIGH	Category
1	1		1820008981	BUD 8/16 CAN	0.7	2	1	PREMIUM
2	1		7199030069	COORS LIGHT 12/12 BTL	1.5	3	1	PREMIUM
3	1		7199000048	COORS LIGHT 12/12 CAN	1.5	3	1	PREMIUM

**Segment # 8 : 8\_1 DEPTH: 23 in WIDTH: 23 in DISTANCE FROM TOP OF BASE SHELF TO BOTTOM OF SHELF:45.00 in**

POS	#	FAC	UPC	NAME	CASES	CAPACITY	UNITS HIGH	Category
-----	---	-----	-----	------	-------	----------	------------	----------



CVS # 1770 COLD

Address: 325 MAMARONECK AVE | City: WHITE PLAINS | State: NY

Chain/StoreNumer: CVS - EAST 1770

Reset Name: 2019 SPRING

Planogram Name: 1770\_9\_DOOR\_COLD

1	1	7199030005	COORS LIGHT 6/12 BTL	1.0	4	1	PREMIUM
2	1	7199000008	COORS LIGHT 6/12 CAN	1.0	4	1	PREMIUM
3	1	7199030120	COORS LIGHT 3/24 CAN	0.5	2	1	PREMIUM
4	1	3410057505	LITE 6/12 BTL	0.8	3	1	PREMIUM

**Segment # 9 : 9\_4 DEPTH: 23 in WIDTH: 23 in DISTANCE FROM TOP OF BASE SHELF TO BOTTOM OF SHELF:2.00 in**

POS	# FAC	UPC	NAME	CASES	CAPACITY	UNITS HIGH	Category
1	1	3410057636	LITE 12/12 CAN	2.0	4	1	PREMIUM
2	1	3410001509	HIGH LIFE 12/12 BTL	2.0	4	1	ECONOMY
3	1	1820028443	NATURAL ICE 15/12 CAN	1.0	2	1	ECONOMY
4	1	1820020077	NATURAL LIGHT 15/12 CAN	1.0	2	1	ECONOMY

**Segment # 9 : 9\_3 DEPTH: 23 in WIDTH: 23 in DISTANCE FROM TOP OF BASE SHELF TO BOTTOM OF SHELF:23.00 in**

POS	# FAC	UPC	NAME	CASES	CAPACITY	UNITS HIGH	Category
1	1	3410057509	LITE 12/12 BTL	1.0	2	1	PREMIUM
2	1	8992427896	YUENGLING LAGER 12/12 BTL	1.0	2	1	PREMIUM
3	1	1820025008	NATURAL ICE 1/25 CAN	0.7	8	1	ECONOMY
4	1	7199047712	KEYSTONE ICE 1/24 CAN	0.7	8	1	ECONOMY

**Segment # 9 : 9\_2 DEPTH: 23 in WIDTH: 23 in DISTANCE FROM TOP OF BASE SHELF TO BOTTOM OF SHELF:34.00 in**

POS	# FAC	UPC	NAME	CASES	CAPACITY	UNITS HIGH	Category
1	1	1820025000	BUD 1/25 CAN	0.5	8	1	PREMIUM
2	1	1820025001	BUD LIGHT 1/25 CAN	0.5	8	1	PREMIUM
3	2	7199010071	COORS BANQUET 1/24 CAN	1.3	16	2	PREMIUM
4	2	7199030065	COORS LIGHT 1/24 CAN	1.3	16	2	PREMIUM
5	1	3410000355	LITE 1/24 CAN	0.7	8	1	PREMIUM

**Segment # 9 : 9\_1 DEPTH: 23 in WIDTH: 23 in DISTANCE FROM TOP OF BASE SHELF TO BOTTOM OF SHELF:45.00 in**

POS	# FAC	UPC	NAME	CASES	CAPACITY	UNITS HIGH	Category
1	1	61300874829	ARNOLD PALMER SPIKED HALF AND HALF 1/24 CAN	0.7	8	1	ABOVE PREMIUM
2	1	8066095643	CORONA 1/24 CAN	0.7	8	1	ABOVE PREMIUM
3	1	8066095721	MODELO ESPECIAL 1/24 CAN	0.6	7	1	ABOVE PREMIUM
4	1	7289000119	HEINEKEN 1/24 CAN	0.6	7	1	ABOVE PREMIUM
5	1	7089718331	FOSTERS PREMIUM 1/25.4 CAN	0.5	6	1	ABOVE PREMIUM
6	2	7089701331	FOSTERS 1/25.4 CAN	1.0	12	2	ABOVE PREMIUM



CVS # 1770 COLD

Reset Timing 2019 SPRING

Address: 325 MAMARONECK AVE | City: WHITE PLAINS | State: NY

## REVERSE VIEW (ONLY IF NEEDED)





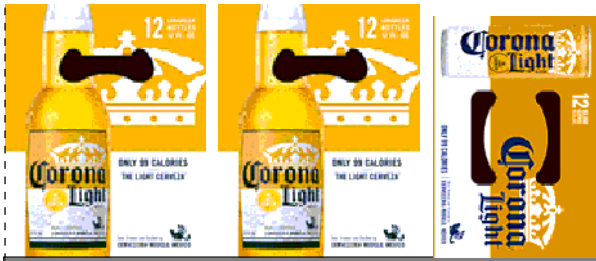
CVS # 1770 COLD

Reset Timing 2019 SPRING

Address: 325 MAMARONECK AVE | City: WHITE PLAINS | State: NY

**REVERSE VIEW (ONLY IF NEEDED)**

Segment:  
1 of 9



**Segment # 1 : 1\_4 2.00 In**

POS	UPC	NAME
1	8066095615	CORONA 12/ 12 BTL

**Segment # 1 : 1\_3 21.00 In**

POS	UPC	NAME
1	8066095615	CORONA 12/ 12 BTL

**Segment # 1 : 1\_2 33.00 In**

POS	UPC	NAME
1	8066095621	CORONA LIGHT 12/ 12 CAN
2	8066095675	CORONA LIGHT 12/ 12 BTL

**Segment # 1 : 1\_1 45.00 In**

POS	UPC	NAME
1	8066095625	CORONA LIGHT 6/ 12 BTL
2	8066095605	CORONA 6/ 12 BTL
3	8066095695	CORONA 12/ 12 CAN





CVS # 1770 COLD

Reset Timing 2019 SPRING

Address: 325 MAMARONECK AVE | City: WHITE PLAINS | State: NY

**REVERSE VIEW (ONLY IF NEEDED)**

Segment:  
2 of 9



**Segment # 2 : 2\_4 2.00 In**

POS	UPC	NAME
1	8066095615	CORONA 12/ 12 BTL

**Segment # 2 : 2\_3 21.00 In**

POS	UPC	NAME
1	8066095615	CORONA 12/ 12 BTL

**Segment # 2 : 2\_2 33.00 In**

POS	UPC	NAME
1	8066095615	CORONA 12/ 12 BTL

**Segment # 2 : 2\_1 45.00 In**

POS	UPC	NAME
1	7231123021	SOL 12/ 12 BTL
2	3354495042	CORONA PREMIER 12/ 12 BTL
3	3354495041	CORONA PREMIER 6/ 12 BTL

**REVERSE VIEW (ONLY IF NEEDED)**

Segment:  
3 of 9



**Segment # 3 : 3\_4 2.00 In**

POS	UPC	NAME
1	8066095680	CORONA 18/ 12 BTL
2	8066095757	MODELO ESPECIAL 12/ 12 BTL

**Segment # 3 : 3\_3 21.00 In**

POS	UPC	NAME
1	3354495053	CORONA FAMILIAR 12/ 12 BTL
2	8066095757	MODELO ESPECIAL 12/ 12 BTL

**Segment # 3 : 3\_2 33.00 In**

POS	UPC	NAME
1	8066095787	MODELO NEGRA 12/ 12 BTL
2	8066095765	MODELO ESPECIAL 6/ 12 BTL

**Segment # 3 : 3\_1 44.00 In**

POS	UPC	NAME
1	8066095785	MODELO NEGRA 6/ 12 BTL
2	8066095715	MODELO ESPECIAL 12/ 12 CAN

**REVERSE VIEW (ONLY IF NEEDED)**

Segment:  
4 of 9



**Segment # 4 : 4\_4 2.00 In**

POS	UPC	NAME
1	8066095757	MODELO ESPECIAL 12/ 12 BTL
2	8066095757	MODELO ESPECIAL 12/ 12 BTL

**Segment # 4 : 4\_3 21.00 In**

POS	UPC	NAME
1	8066095757	MODELO ESPECIAL 12/ 12 BTL
2	8066095757	MODELO ESPECIAL 12/ 12 BTL

**Segment # 4 : 4\_2 33.00 In**

POS	UPC	NAME
1	8066095757	MODELO ESPECIAL 12/ 12 BTL
2	8982690033	TECATE 12/ 12 CAN
3	7231163012	DOS EQUIS 6/ 12 BTL

**Segment # 4 : 4\_1 44.00 In**

POS	UPC	NAME
1	8066095715	MODELO ESPECIAL 12/ 12 CAN



CVS # 1770 COLD

Reset Timing 2019 SPRING

Address: 325 MAMARONECK AVE | City: WHITE PLAINS | State: NY

**REVERSE VIEW (ONLY IF NEEDED)**

Segment:  
5 of 9



**Segment # 5 : 5\_4 2.00 In**

POS	UPC	NAME
1	8248812300	BECKS 12/ 12 BTL
2	78615000014	STELLA ARTOIS 12/11.2 BTL

**Segment # 5 : 5\_3 23.00 In**

POS	UPC	NAME
1	63598554890	WHITE CLAW VARIETY PACK 12/ 12 CAN
2	3410051681	CAPE LINE VARIETY PACK 12/ 12 CAN
3	78615000001	STELLA ARTOIS 6/ 11.2 BTL
4	8769230050	SAMUEL ADAMS SEASONAL 6/ 12 BTL (A)

**Segment # 5 : 5\_2 34.00 In**

POS	UPC	NAME
1	3354400013	CORONA REFRESCA VARIETY 12/ 12 CAN
2	60690500830	ITHACA FLOWER POWER 6/ 12 BTL
3	63848900029	DOGFISH HEAD 60 MINUTE IPA 6/ 12 BTL
4	8769210012	SAMUEL ADAMS BOSTON LAGER 6/ 12 BTL

**Segment # 5 : 5\_1 45.00 In**

POS	UPC	NAME
1	8834510151	STRONGBOW GOLD 6/ 11.2 BTL
2	8769282102	ANGRY ORCHARD CRISP APPLE 6/ 12 BTL
3	81760601000	CAPTAIN LAWRENCE FRESHCHESTER 6/ 12 BTL
4	81760601020	CAPTAIN LAWRENCE IPA 6/ 12 BTL



CVS # 1770 COLD

Reset Timing 2019 SPRING

Address: 325 MAMARONECK AVE | City: WHITE PLAINS | State: NY

**REVERSE VIEW (ONLY IF NEEDED)**

Segment:  
6 of 9



**Segment # 6 : 6\_4 2.00 In**

POS	UPC	NAME
1	7289000016	HEINEKEN 12/ 12 BTL

**Segment # 6 : 6\_3 23.00 In**

POS	UPC	NAME
1	7289000020	HEINEKEN 12/ 12 CAN
2	7289000011	HEINEKEN 6/ 12 BTL
3	7289000159	HEINEKEN LIGHT 12/ 12 BTL
4	63598510062	MIKES HARD LEMONADE 6/ 11.2 BTL

**Segment # 6 : 6\_2 34.00 In**

POS	UPC	NAME
1	7199009561	BLUE MOON MANGO WHEAT 6/ 12 BTL
2	7199009532	BLUE MOON SEASONAL 6/ 12 BTL
3	7199009511	BLUE MOON BELGIAN WHITE 6/ 12 BTL
4	7199009516	BLUE MOON BELGIAN WHITE 12/ 12 BTL

**Segment # 6 : 6\_1 45.00 In**

POS	UPC	NAME
1	3061300053	BROOKLYN SEASONAL 6/ 12 BTL
2	3061300001	BROOKLYN LAGER 6/ 12 BTL
3	75452700022	NEW BELGIUM FAT TIRE 6/ 12 BTL
4	1820020079	BUD LIGHT ORANGE 6/ 12 BTL



CVS # 1770 COLD

Reset Timing 2019 SPRING

Address: 325 MAMARONECK AVE | City: WHITE PLAINS | State: NY

**REVERSE VIEW (ONLY IF NEEDED)**

Segment:  
7 of 9



**Segment # 7 : 7\_4 2.00 In**

POS	UPC	NAME
1	1820053218	BUD LIGHT 18/ 12 CAN
2	1820011047	BUD 12/ 12 CAN

**Segment # 7 : 7\_3 23.00 In**

POS	UPC	NAME
1	1820096721	MICHELOB ULTRA 18/ 12 CAN
2	1820020083	MICHELOB ULTRA PURE GOLD 12/ 12 BTL
3	1820053047	BUD LIGHT 12/ 12 CAN

**Segment # 7 : 7\_2 34.00 In**

POS	UPC	NAME
1	1820005990	MICHELOB ULTRA 12/ 12 BTL
2	1820018993	BUD LIGHT PLATINUM 6/ 12 BTL
3	1820000769	BUD LIGHT 12/ 12 BTL

**Segment # 7 : 7\_1 45.00 In**

POS	UPC	NAME
1	1820005989	MICHELOB ULTRA 6/ 12 BTL
2	1820008989	BUD LIGHT 8/ 16 CAN
3	1820000833	BUD LIGHT 6/ 12 BTL
4	1820000834	BUD 6/ 12 BTL



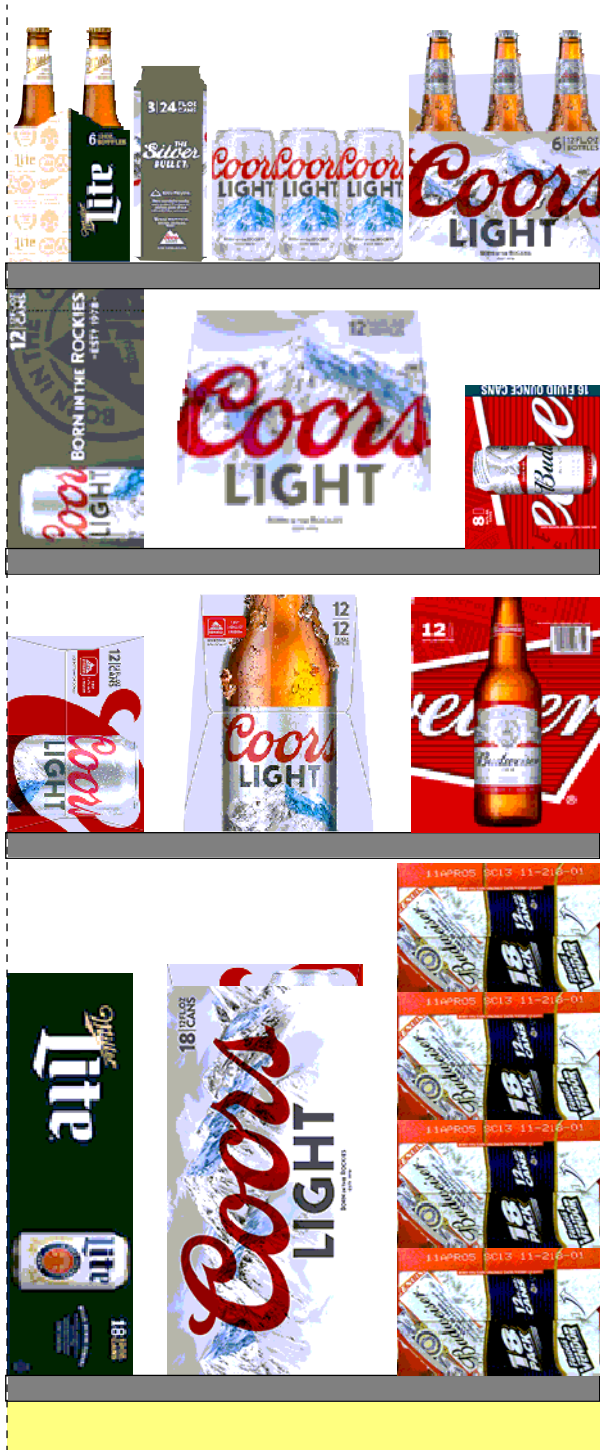
CVS # 1770 COLD

Reset Timing 2019 SPRING

Address: 325 MAMARONECK AVE | City: WHITE PLAINS | State: NY

**REVERSE VIEW (ONLY IF NEEDED)**

Segment:  
8 of 9



**Segment # 8 : 8\_4 2.00 In**

POS	UPC	NAME
1	1820011218	BUD 18/ 12 CAN
2	7199030017	COORS LIGHT 18/ 12 CAN
3	3410057340	LITE 18/ 12 CAN

**Segment # 8 : 8\_3 23.00 In**

POS	UPC	NAME
1	1820000771	BUD 12/ 12 BTL
2	7199030069	COORS LIGHT 12/ 12 BTL
3	7199000048	COORS LIGHT 12/ 12 CAN

**Segment # 8 : 8\_2 34.00 In**

POS	UPC	NAME
1	1820008981	BUD 8/ 16 CAN
2	7199030069	COORS LIGHT 12/ 12 BTL
3	7199000048	COORS LIGHT 12/ 12 CAN

**Segment # 8 : 8\_1 45.00 In**

POS	UPC	NAME
1	7199030005	COORS LIGHT 6/ 12 BTL
2	7199000008	COORS LIGHT 6/ 12 CAN
3	7199030120	COORS LIGHT 3/ 24 CAN
4	3410057505	LITE 6/ 12 BTL



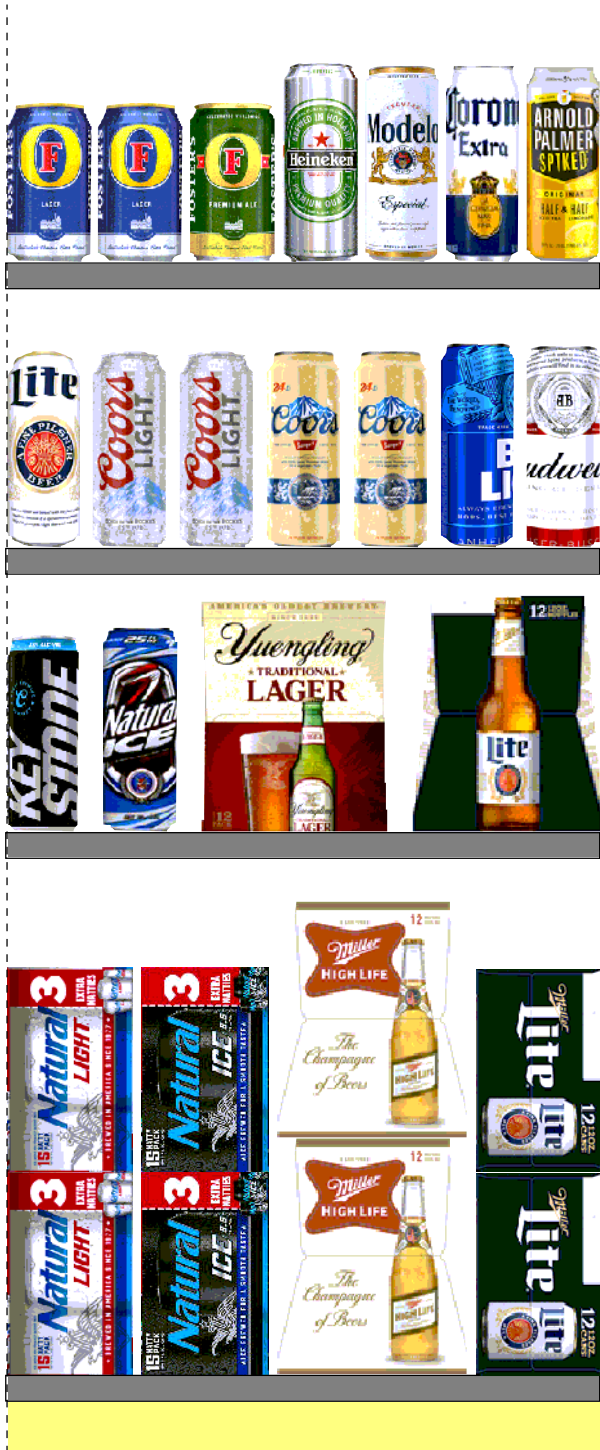
CVS # 1770 COLD

Reset Timing 2019 SPRING

Address: 325 MAMARONECK AVE | City: WHITE PLAINS | State: NY

**REVERSE VIEW (ONLY IF NEEDED)**

Segment:  
9 of 9



**Segment # 9 : 9\_4 2.00 In**

POS	UPC	NAME
1	3410057636	LITE 12/ 12 CAN
2	3410001509	HIGH LIFE 12/ 12 BTL
3	1820028443	NATURAL ICE 15/ 12 CAN
4	1820020077	NATURAL LIGHT 15/ 12 CAN

**Segment # 9 : 9\_3 23.00 In**

POS	UPC	NAME
1	3410057509	LITE 12/ 12 BTL
2	8992427896	YUENGLING LAGER 12/ 12 BTL
3	1820025008	NATURAL ICE 1/ 25 CAN
4	7199047712	KEYSTONE ICE 1/ 24 CAN

**Segment # 9 : 9\_2 34.00 In**

POS	UPC	NAME
1	1820025000	BUD 1/ 25 CAN
2	1820025001	BUD LIGHT 1/ 25 CAN
3	7199010071	COORS BANQUET 1/ 24 CAN
4	7199030065	COORS LIGHT 1/ 24 CAN
5	3410000355	LITE 1/ 24 CAN

**Segment # 9 : 9\_1 45.00 In**

POS	UPC	NAME
1	61300874829	ARNOLD PALMER SPIKED HALF AND HALF 1/ 24 CAN
2	8066095643	CORONA 1/ 24 CAN
3	8066095721	MODELO ESPECIAL 1/ 24 CAN
4	7289000119	HEINEKEN 1/ 24 CAN
5	7089718331	FOSTERS PREMIUM 1/ 25.4 CAN
6	7089701331	FOSTERS 1/ 25.4 CAN





CVS # 1770 COLD

Address: 325 MAMARONECK AVE | City: WHITE PLAINS | State: NY

Chain/StoreNumer: CVS - EAST 1770

Reset Name: 2019 SPRING

Planogram Name: 1770\_9\_DOOR\_COLD

CVS PHARMA... Store # 1770 H: 4 ft 8.00 in W: 17 ft 3.00 in D: 1 ft 11.00 in # of segments: 9

Name: 1\_1 W:23.00 in D:23.00 in Avail Space: 2.16 in Ht Space: 10.00 in

ID	UPC	Barcode	Name	Category	HFacings	Orientation	Units
15408	8066095625		CORONA LIGHT 6/12 BTL	ABOVE PREMIUM	1	Side	2
15400	8066095605		CORONA 6/12 BTL	ABOVE PREMIUM	2	Side	4
15426	8066095695		CORONA 12/12 CAN	ABOVE PREMIUM	1	Side	2

Name: 1\_2 W:23.00 in D:23.00 in Avail Space: 1.08 in Ht Space: 11.00 in

ID	UPC	Barcode	Name	Category	HFacings	Orientation	Units
15406	8066095621		CORONA LIGHT 12/12 CAN	ABOVE PREMIUM	1	Top 90	3
15416	8066095675		CORONA LIGHT 12/12 BTL	ABOVE PREMIUM	2	Side	4

Name: 1\_3 W:23.00 in D:23.00 in Avail Space: 2.96 in Ht Space: 11.00 in

ID	UPC	Barcode	Name	Category	HFacings	Orientation	Units
15403	8066095615		CORONA 12/12 BTL	ABOVE PREMIUM	2	Front	4

Name: 1\_4 W:23.00 in D:23.00 in Avail Space: 2.96 in Ht Space: 18.00 in

ID	UPC	Barcode	Name	Category	HFacings	Orientation	Units
15403	8066095615		CORONA 12/12 BTL	ABOVE PREMIUM	2	Front	8

Name: 2\_1 W:23.00 in D:23.00 in Avail Space: 0.48 in Ht Space: 10.00 in

ID	UPC	Barcode	Name	Category	HFacings	Orientation	Units
10790	7231123021		SOL 12/12 BTL	ABOVE PREMIUM	1	Front	3
44952	3354495042		CORONA PREMIER 12/12 BTL	ABOVE PREMIUM	1	Side	2
44964	3354495041		CORONA PREMIER 6/12 BTL	ABOVE PREMIUM	1	Side	2

Name: 2\_2 W:23.00 in D:23.00 in Avail Space: 2.96 in Ht Space: 11.00 in

ID	UPC	Barcode	Name	Category	HFacings	Orientation	Units
15403	8066095615		CORONA 12/12 BTL	ABOVE PREMIUM	2	Front	4

Name: 2\_3 W:23.00 in D:23.00 in Avail Space: 2.96 in Ht Space: 11.00 in

ID	UPC	Barcode	Name	Category	HFacings	Orientation	Units
----	-----	---------	------	----------	----------	-------------	-------



CVS # 1770 COLD

Address: 325 MAMARONECK AVE | City: WHITE PLAINS | State: NY

Chain/StoreNumer: CVS - EAST 1770

Reset Name: 2019 SPRING

Planogram Name: 1770\_9\_DOOR\_COLD

15403	8066095615		2	CORONA 12/12 BTL	ABOVE PREMIUM	2	Front	4
-------	------------	---	---	------------------	---------------	---	-------	---

Name: 2\_4 W:23.00 in D:23.00 in Avail Space: 2.96 in Ht Space: 18.00 in

ID	UPC	Barcode	Name	Category	HFacings	Orientation	Units	
15403	8066095615		2	CORONA 12/12 BTL	ABOVE PREMIUM	2	Front	8



Name: 3\_1 W:23.00 in D:23.00 in Avail Space: 2.12 in Ht Space: 11.00 in

ID	UPC	Barcode	Name	Category	HFacings	Orientation	Units	
15448	8066095785		2	MODELO NEGRA 6/12 BTL	ABOVE PREMIUM	1	Side	2
15429	8066095715		9	MODELO ESPECIAL 12/12 CAN	ABOVE PREMIUM	3	Top 90	6



Name: 3\_2 W:23.00 in D:23.00 in Avail Space: 1.44 in Ht Space: 10.00 in

ID	UPC	Barcode	Name	Category	HFacings	Orientation	Units	
15449	8066095787		6	MODELO NEGRA 12/12 BTL	ABOVE PREMIUM	1	Side	1
15442	8066095765		4	MODELO ESPECIAL 6/12 BTL	ABOVE PREMIUM	2	Side	4


Name: 3\_3 W:23.00 in D:23.00 in Avail Space: 0.53 in Ht Space: 11.00 in

ID	UPC	Barcode	Name	Category	HFacings	Orientation	Units	
51878	3354495053		1	CORONA FAMILIAR 12/12 BTL	ABOVE PREMIUM	1	Front	2
15436	8066095757		9	MODELO ESPECIAL 12/12 BTL	ABOVE PREMIUM	1	Front	2

Name: 3\_4 W:23.00 in D:23.00 in Avail Space: 2.60 in Ht Space: 18.00 in

ID	UPC	Barcode	Name	Category	HFacings	Orientation	Units	
15417	8066095680		0	CORONA 18/12 BTL	ABOVE PREMIUM	1	Top 90	2
15436	8066095757		9	MODELO ESPECIAL 12/12 BTL	ABOVE PREMIUM	1	Front	4

Name: 4\_1 W:23.00 in D:23.00 in Avail Space: 3.36 in Ht Space: 11.00 in

ID	UPC	Barcode	Name	Category	HFacings	Orientation	Units	
15429	8066095715		9	MODELO ESPECIAL 12/12 CAN	ABOVE PREMIUM	4	Top 90	8

Name: 4\_2 W:23.00 in D:23.00 in Avail Space: 0.47 in Ht Space: 10.00 in

ID	UPC	Barcode	Name	Category	HFacings	Orientation	Units
----	-----	---------	------	----------	----------	-------------	-------



CVS # 1770 COLD

Address: 325 MAMARONECK AVE | City: WHITE PLAINS | State: NY

Chain/StoreNumer: CVS - EAST 1770

Reset Name: 2019 SPRING

Planogram Name: 1770\_9\_DOOR\_COLD

15436	8066095757		MODELO ESPECIAL 12/12 BTL	ABOVE PREMIUM	1	Front	2
23789	8982690033		TECATE 12/12 CAN	ABOVE PREMIUM	1	Side	2
10813	7231163012		DOS EQUIS 6/12 BTL	ABOVE PREMIUM	1	Side	2

Name: 4\_3 W:23.00 in D:23.00 in Avail Space: 1.31 in Ht Space: 11.00 in

ID	UPC	Barcode	Name	Category	HFacings	Orientation	Units
15436	8066095757		MODELO ESPECIAL 12/12 BTL	ABOVE PREMIUM	1	Side	1
15436	8066095757		MODELO ESPECIAL 12/12 BTL	ABOVE PREMIUM	1	Front	2

Name: 4\_4 W:23.00 in D:23.00 in Avail Space: 1.31 in Ht Space: 18.00 in

ID	UPC	Barcode	Name	Category	HFacings	Orientation	Units
15436	8066095757		MODELO ESPECIAL 12/12 BTL	ABOVE PREMIUM	1	Side	2
15436	8066095757		MODELO ESPECIAL 12/12 BTL	ABOVE PREMIUM	1	Front	4

Name: 5\_1 W:23.00 in D:23.00 in Avail Space: 0.59 in Ht Space: 10.00 in

ID	UPC	Barcode	Name	Category	HFacings	Orientation	Units
22457	8834510151		STRONGBOW GOLD 6/11.2 BTL	ABOVE PREMIUM	1	Side	3
22090	8769282102		ANGRY ORCHARD CRISP APP...	ABOVE PREMIUM	1	Side	3
15955	81760601000		CAPTAIN LAWRENCE FRESHC...	ABOVE PREMIUM	1	Side	3
15961	81760601020		CAPTAIN LAWRENCE IPA 6/12 ...	ABOVE PREMIUM	1	Front	4

Name: 5\_2 W:23.00 in D:23.00 in Avail Space: 1.61 in Ht Space: 10.00 in

ID	UPC	Barcode	Name	Category	HFacings	Orientation	Units
86777	3354400013		CORONA REFRESCA VARIETY...	ABOVE PREMIUM	1	Side 90	2
5177	60690500830		ITHACA FLOWER POWER 6/12 ...	ABOVE PREMIUM	1	Side	3
6748	63848900029		DOGFISH HEAD 60 MINUTE IPA...	ABOVE PREMIUM	1	Side	3



CVS # 1770 COLD

Address: 325 MAMARONECK AVE | City: WHITE PLAINS | State: NY

Chain/StoreNumer: CVS - EAST 1770

Reset Name: 2019 SPRING

Planogram Name: 1770\_9\_DOOR\_COLD

21956	8769210012		6	SAMUEL ADAMS BOSTON LAG...	ABOVE PREMIUM	1	Side	3
-------	------------	--	---	----------------------------	---------------	---	------	---

Name: 5\_3 W:23.00 in D:23.00 in Avail Space: 0.88 in Ht Space: 10.00 in

ID	UPC	Barcode		Name	Category	HFacings	Orientation	Units
45151	63598554890		4	WHITE CLAW VARIETY PACK 1...	ABOVE PREMIUM	1	Side 90	2
86788	3410051681		9	CAPE LINE VARIETY PACK 12/1...	ABOVE PREMIUM	1	Side 90	2
14089	78615000001		4	STELLA ARTOIS 6/11.2 BTL	ABOVE PREMIUM	1	Side	3
21995	8769230050		2	SAMUEL ADAMS SEASONAL 6/...	ABOVE PREMIUM	1	Side	3

Name: 5\_4 W:23.00 in D:23.00 in Avail Space: 0.75 in Ht Space: 20.00 in

ID	UPC	Barcode		Name	Category	HFacings	Orientation	Units
16691	8248812300		6	BECKS 12/12 BTL	ABOVE PREMIUM	1	Side	4
14094	78615000014		4	STELLA ARTOIS 12/11.2 BTL	ABOVE PREMIUM	2	Side	8

Name: 6\_1 W:23.00 in D:23.00 in Avail Space: 0.61 in Ht Space: 10.00 in

ID	UPC	Barcode		Name	Category	HFacings	Orientation	Units
2638	3061300053		1	BROOKLYN SEASONAL 6/12 BTL	ABOVE PREMIUM	1	Side	2
2616	3061300001		2	BROOKLYN LAGER 6/12 BTL	ABOVE PREMIUM	1	Side	2
13009	75452700022		6	NEW BELGIUM FAT TIRE 6/12 B...	ABOVE PREMIUM	1	Front	4
67176	1820020079		3	BUD LIGHT ORANGE 6/12 BTL	ABOVE PREMIUM	1	Side	3

Name: 6\_2 W:23.00 in D:23.00 in Avail Space: 0.47 in Ht Space: 10.00 in

ID	UPC	Barcode		Name	Category	HFacings	Orientation	Units
62048	7199009561		1	BLUE MOON MANGO WHEAT 6...	ABOVE PREMIUM	1	Side	3
10190	7199009532		1	BLUE MOON SEASONAL 6/12 B...	ABOVE PREMIUM	1	Side	3
10180	7199009511		6	BLUE MOON BELGIAN WHITE 6...	ABOVE PREMIUM	1	Side	3



CVS # 1770 COLD

Address: 325 MAMARONECK AVE | City: WHITE PLAINS | State: NY

Chain/StoreNumer: CVS - EAST 1770

Reset Name: 2019 SPRING

Planogram Name: 1770\_9\_DOOR\_COLD

10183	7199009516		BLUE MOON BELGIAN WHITE 1...	ABOVE PREMIUM	1	Side	2
-------	------------	--	------------------------------	---------------	---	------	---

Name: 6\_3 W:23.00 in D:23.00 in Avail Space: 0.84 in Ht Space: 10.00 in

ID	UPC	Barcode	Name	Category	HFacings	Orientation	Units
11301	7289000020		HEINEKEN 12/12 CAN	ABOVE PREMIUM	1	Side	2
11298	7289000011		HEINEKEN 6/12 BTL	ABOVE PREMIUM	1	Side	3
11342	7289000159		HEINEKEN LIGHT 12/12 BTL	ABOVE PREMIUM	1	Side	2
6413	63598510062		MIKES HARD LEMONADE 6/11....	ABOVE PREMIUM	1	Side	3

Name: 6\_4 W:23.00 in D:23.00 in Avail Space: 1.04 in Ht Space: 20.00 in

ID	UPC	Barcode	Name	Category	HFacings	Orientation	Units
11300	7289000016		HEINEKEN 12/12 BTL	ABOVE PREMIUM	3	Side	12

Name: 7\_1 W:23.00 in D:23.00 in Avail Space: 2.60 in Ht Space: 10.00 in

ID	UPC	Barcode	Name	Category	HFacings	Orientation	Units
1227	1820005989		MICHELOB ULTRA 6/12 BTL	ABOVE PREMIUM	1	Side	3
1262	1820008989		BUD LIGHT 8/16 CAN	PREMIUM	1	Side 90	2
1083	1820000833		BUD LIGHT 6/12 BTL	PREMIUM	1	Side	3
1084	1820000834		BUD 6/12 BTL	PREMIUM	1	Side	3

Name: 7\_2 W:23.00 in D:23.00 in Avail Space: 0.82 in Ht Space: 10.00 in

ID	UPC	Barcode	Name	Category	HFacings	Orientation	Units
1228	1820005990		MICHELOB ULTRA 12/12 BTL	ABOVE PREMIUM	1	Front	3
1429	1820018993		BUD LIGHT PLATINUM 6/12 BTL	ABOVE PREMIUM	1	Side	3
1056	1820000769		BUD LIGHT 12/12 BTL	PREMIUM	1	Side	2

Name: 7\_3 W:23.00 in D:23.00 in Avail Space: 1.60 in Ht Space: 10.00 in

ID	UPC	Barcode	Name	Category	HFacings	Orientation	Units
----	-----	---------	------	----------	----------	-------------	-------



CVS # 1770 COLD

Address: 325 MAMARONECK AVE | City: WHITE PLAINS | State: NY

Chain/StoreNumer: CVS - EAST 1770

Reset Name: 2019 SPRING

Planogram Name: 1770\_9\_DOOR\_COLD

1850	1820096721		MICHELOB ULTRA 18/12 CAN	ABOVE PREMIUM	1	Side	1
65828	1820020083		MICHELOB ULTRA PURE GOLD...	ABOVE PREMIUM	1	Side	2
1659	1820053047		BUD LIGHT 12/12 CAN	PREMIUM	1	Side 90	4

Name: 7\_4 W:23.00 in D:23.00 in Avail Space: 2.19 in Ht Space: 20.00 in

ID	UPC	Barcode	Name	Category	HFacings	Orientation	Units
1667	1820053218		BUD LIGHT 18/12 CAN	PREMIUM	1	Top	8
1297	1820011047		BUD 12/12 CAN	PREMIUM	1	Side	4

Name: 8\_1 W:23.00 in D:23.00 in Avail Space: 0.34 in Ht Space: 10.00 in

ID	UPC	Barcode	Name	Category	HFacings	Orientation	Units
10322	7199030005		COORS LIGHT 6/12 BTL	PREMIUM	1	Front	4
10155	7199000008		COORS LIGHT 6/12 CAN	PREMIUM	1	Front	4
10372	7199030120		COORS LIGHT 3/24 CAN	PREMIUM	1	Side	2
3564	3410057505		LITE 6/12 BTL	PREMIUM	1	Side	3

Name: 8\_2 W:23.00 in D:23.00 in Avail Space: 2.54 in Ht Space: 10.00 in

ID	UPC	Barcode	Name	Category	HFacings	Orientation	Units
1256	1820008981		BUD 8/16 CAN	PREMIUM	1	Side 90	2
10348	7199030069		COORS LIGHT 12/12 BTL	PREMIUM	1	Front	3
10164	7199000048		COORS LIGHT 12/12 CAN	PREMIUM	1	Top 90	3

Name: 8\_3 W:23.00 in D:23.00 in Avail Space: 2.90 in Ht Space: 10.00 in

ID	UPC	Barcode	Name	Category	HFacings	Orientation	Units
1058	1820000771		BUD 12/12 BTL	PREMIUM	1	Side	2
10348	7199030069		COORS LIGHT 12/12 BTL	PREMIUM	1	Side	2



CVS # 1770 COLD

Address: 325 MAMARONECK AVE | City: WHITE PLAINS | State: NY

Chain/StoreNumer: CVS - EAST 1770

Reset Name: 2019 SPRING

Planogram Name: 1770\_9\_DOOR\_COLD

10164	7199000048		6	COORS LIGHT 12/12 CAN	PREMIUM	1	Side	2
-------	------------	--	---	-----------------------	---------	---	------	---

Name: 8\_4 W:23.00 in D:23.00 in Avail Space: 2.67 in Ht Space: 20.00 in

ID	UPC	Barcode	Name	Category	HFacings	Orientation	Units	
1307	1820011218		8	BUD 18/12 CAN	PREMIUM	1	Side 90	4
10329	7199030017		3	COORS LIGHT 18/12 CAN	PREMIUM	1	Side 90	5
3552	3410057340		9	LITE 18/12 CAN	PREMIUM	1	Top 90	2

Name: 9\_1 W:23.00 in D:23.00 in Avail Space: 1.54 in Ht Space: 10.00 in

ID	UPC	Barcode	Name	Category	HFacings	Orientation	Units	
66064	61300874829		6	ARNOLD PALMER SPIKED HAL...	ABOVE PREMIUM	1	Side	8
15415	8066095643		5	CORONA 1/24 CAN	ABOVE PREMIUM	1	Front	8
15431	8066095721		0	MODELO ESPECIAL 1/24 CAN	ABOVE PREMIUM	1	Front	7
11327	7289000119		1	HEINEKEN 1/24 CAN	ABOVE PREMIUM	1	Front	7
9488	7089718331		5	FOSTERS PREMIUM 1/25.4 CAN	ABOVE PREMIUM	1	Side	6
9452	7089701331		5	FOSTERS 1/25.4 CAN	ABOVE PREMIUM	2	Side	12

Name: 9\_2 W:23.00 in D:23.00 in Avail Space: 2.93 in Ht Space: 10.00 in

ID	UPC	Barcode	Name	Category	HFacings	Orientation	Units	
1520	1820025000		2	BUD 1/25 CAN	PREMIUM	1	Front	8
1521	1820025001		9	BUD LIGHT 1/25 CAN	PREMIUM	1	Front	8
10243	7199010071		1	COORS BANQUET 1/24 CAN	PREMIUM	2	Front	16
10346	7199030065		4	COORS LIGHT 1/24 CAN	PREMIUM	2	Front	16
2968	3410000355		5	LITE 1/24 CAN	PREMIUM	1	Front	8



CVS # 1770 COLD

Address: 325 MAMARONECK AVE | City: WHITE PLAINS | State: NY

Chain/StoreNumer: CVS - EAST 1770

Reset Name: 2019 SPRING

Planogram Name: 1770\_9\_DOOR\_COLD

Name: 9\_3 W:23.00 in D:23.00 in Avail Space: 2.81 in Ht Space: 10.00 in

ID	UPC	Barcode	Name	Category	HFacings	Orientation	Units
3565	3410057509	0 34100 57509 0	LITE 12/12 BTL	PREMIUM	1	Side	2
23902	8992427896	0 89924 27896 2	YUENGLING LAGER 12/12 BTL	PREMIUM	1	Side	2
1528	1820025008	0 18200 25008 8	NATURAL ICE 1/25 CAN	ECONOMY	1	Side	8
10412	7199047712	0 71990 47712 7	KEYSTONE ICE 1/24 CAN	ECONOMY	1	Front	8

Name: 9\_4 W:23.00 in D:23.00 in Avail Space: 1.00 in Ht Space: 20.00 in

ID	UPC	Barcode	Name	Category	HFacings	Orientation	Units
3579	3410057636	0 34100 57636 3	LITE 12/12 CAN	PREMIUM	1	Side	4
3198	3410001509	0 34100 01509 1	HIGH LIFE 12/12 BTL	ECONOMY	1	Side	4
66288	1820028443	0 18200 28443 4	NATURAL ICE 15/12 CAN	ECONOMY	1	Side	2
61975	1820020077	0 18200 20077 9	NATURAL LIGHT 15/12 CAN	ECONOMY	1	Side	2







CVS # 1770 WARM

Address: 325 MAMARONECK AVE | City: WHITE PLAINS | State: NY

Chain/StoreNumer: CVS - EAST 1770

Reset Name: 2019 SPRING

Planogram Name: 1770\_16ft\_OPEN\_WARM

Segment # 2 : 2\_3 DEPTH: 16 in WIDTH: 192 in DISTANCE FROM TOP OF BASE SHELF TO BOTTOM OF SHELF:0.00 in

POS #	FAC	UPC	NAME	CASES	CAPACITY	UNITS HIGH	Category
1	3	8066095615	CORONA 12/12 BTL	6.0	12	3	ABOVE PREMIUM
1	4	8066095757	MODELO ESPECIAL 12/12 BTL	6.0	12	4	ABOVE PREMIUM
2	1	8066095787	MODELO NEGRA 12/12 BTL	1.5	3	1	ABOVE PREMIUM
1	2	7289000016	HEINEKEN 12/12 BTL	4.0	8	2	ABOVE PREMIUM
2	1	78615000014	STELLA ARTOIS 12/11.2 BTL	2.0	4	1	ABOVE PREMIUM
3	1	1820053308	BUD LIGHT 18/12 BTL	2.0	2	1	PREMIUM
4	1	1820053030	BUD LIGHT 30/12 CAN	2.0	2	1	PREMIUM
5	1	1820011030	BUD 30/12 CAN	2.0	2	1	PREMIUM
1	1	7199030030	COORS LIGHT 30/12 CAN	2.0	2	1	PREMIUM
2	2	7199030078	COORS LIGHT 18/12 BTL	4.0	4	2	PREMIUM
3	1	7199031600	COORS LIGHT 24/12 CAN	1.0	1	1	PREMIUM
4	1	7199010020	COORS BANQUET 18/12 CAN	2.0	2	1	PREMIUM
5	1	3410057306	LITE 24/12 CAN	1.0	1	1	PREMIUM
6	1	1820028443	NATURAL ICE 15/12 CAN	2.0	4	1	ECONOMY

Segment # 2 : 2\_2 DEPTH: 16 in WIDTH: 192 in DISTANCE FROM TOP OF BASE SHELF TO BOTTOM OF SHELF:25.00 in

POS #	FAC	UPC	NAME	CASES	CAPACITY	UNITS HIGH	Category
1	1	8066095675	CORONA LIGHT 12/12 BTL	2.0	4	1	ABOVE PREMIUM
2	3	8066095615	CORONA 12/12 BTL	6.0	12	3	ABOVE PREMIUM
1	2	8066095715	MODELO ESPECIAL 12/12 CAN	8.0	16	2	ABOVE PREMIUM
2	1	7289000020	HEINEKEN 12/12 CAN	2.0	4	1	ABOVE PREMIUM
3	1	8248812300	BECKS 12/12 BTL	2.0	4	1	ABOVE PREMIUM
4	1	1820096721	MICHELOB ULTRA 18/12 CAN	3.0	3	1	ABOVE PREMIUM
5	1	1820053218	BUD LIGHT 18/12 CAN	8.0	8	1	PREMIUM
1	2	1820053047	BUD LIGHT 12/12 CAN	4.0	8	2	PREMIUM
2	1	1820000769	BUD LIGHT 12/12 BTL	2.0	4	1	PREMIUM
3	1	1820011218	BUD 18/12 CAN	4.0	4	1	PREMIUM
4	1	7199030017	COORS LIGHT 18/12 CAN	8.0	8	1	PREMIUM
1	2	7199000048	COORS LIGHT 12/12 CAN	4.0	8	2	PREMIUM
2	1	7199030069	COORS LIGHT 12/12 BTL	2.0	4	1	PREMIUM
3	1	3410057340	LITE 18/12 CAN	4.0	4	1	PREMIUM
4	1	1820020077	NATURAL LIGHT 15/12 CAN	2.0	4	1	ECONOMY

Segment # 2 : 2\_1 DEPTH: 16 in WIDTH: 192 in DISTANCE FROM TOP OF BASE SHELF TO BOTTOM OF SHELF:48.00 in

POS #	FAC	UPC	NAME	CASES	CAPACITY	UNITS HIGH	Category
1	1	8066095605	CORONA 6/12 BTL	0.8	3	1	ABOVE PREMIUM
2	1	8066095695	CORONA 12/12 CAN	1.0	2	1	ABOVE PREMIUM
3	1	8066095765	MODELO ESPECIAL 6/12 BTL	0.5	2	1	ABOVE PREMIUM
4	2	78615000001	STELLA ARTOIS 6/11.2 BTL	1.0	4	2	ABOVE PREMIUM
5	2	7289000011	HEINEKEN 6/12 BTL	1.0	4	2	ABOVE PREMIUM
1	1	7289000159	HEINEKEN LIGHT 12/12 BTL	1.0	2	1	ABOVE PREMIUM
2	1	7289010016	AMSTEL LIGHT 12/12 BTL	1.0	2	1	ABOVE PREMIUM
3	1	85389700227	BON AND VIV SPIKED SELTZER VARIETY 12/12 CAN	1.0	2	1	ABOVE PREMIUM
4	1	3410000342	REDD'S WICKED 12/10 CAN	1.0	2	1	ABOVE PREMIUM
5	2	8769200660	ANGRY ORCHARD ROSE 6/12 BTL	1.0	4	2	ABOVE PREMIUM
6	1	8834510151	STRONGBOW GOLD 6/11.2 BTL	0.5	2	1	ABOVE PREMIUM
7	1	81760601000	CAPTAIN LAWRENCE FRESHCHESTER 6/12 BTL	0.5	2	1	ABOVE PREMIUM
1	1	81760601020	CAPTAIN LAWRENCE IPA 6/12 BTL	0.5	2	1	ABOVE PREMIUM
2	1	7199009511	BLUE MOON BELGIAN WHITE 6/12 BTL	0.5	2	1	ABOVE PREMIUM
3	1	7199009516	BLUE MOON BELGIAN WHITE 12/12 BTL	1.0	2	1	ABOVE PREMIUM



CVS # 1770 WARM

Address: 325 MAMARONECK AVE | City: WHITE PLAINS | State: NY

Chain/StoreNumber: CVS - EAST 1770

Reset Name: 2019 SPRING

Planogram Name: 1770\_16ft\_OPEN\_WARM

4	1	1820015981	SHOCK TOP BELGIAN WHITE 12/12 BTL	1.0	2	1	ABOVE PREMIUM
5	1	64286090024	FOUNDERS ALL DAY SESSION IPA 15/12 CAN	1.0	2	1	ABOVE PREMIUM
6	1	1820005990	MICHELOB ULTRA 12/12 BTL	1.0	2	1	ABOVE PREMIUM
1	1	1820011047	BUD 12/12 CAN	1.0	2	1	PREMIUM
2	1	1820000771	BUD 12/12 BTL	1.0	2	1	PREMIUM
3	1	3410057509	LITE 12/12 BTL	1.0	2	1	PREMIUM
4	1	3410057636	LITE 12/12 CAN	1.0	2	1	PREMIUM
5	1	3410001509	HIGH LIFE 12/12 BTL	1.0	2	1	ECONOMY
6	1	3410001636	HIGH LIFE 12/12 CAN	1.0	2	1	ECONOMY



CVS # 1770 WARM

Reset Timing 2019 SPRING

Address: 325 MAMARONECK AVE | City: WHITE PLAINS | State: NY

## REVERSE VIEW (ONLY IF NEEDED)





CVS # 1770 WARM

Reset Timing 2019 SPRING

Address: 325 MAMARONECK AVE | City: WHITE PLAINS | State: NY

**REVERSE VIEW (ONLY IF NEEDED)**

Segment:  
1 of 4



**Segment # 2 : 2\_3 0.00 In**

POS	UPC	NAME
1	8066095615	CORONA 12/ 12 BTL

**Segment # 2 : 2\_2 25.00 In**

POS	UPC	NAME
1	8066095675	CORONA LIGHT 12/ 12 BTL
2	8066095615	CORONA 12/ 12 BTL

**Segment # 2 : 2\_1 48.00 In**

POS	UPC	NAME
1	8066095605	CORONA 6/ 12 BTL
2	8066095695	CORONA 12/ 12 CAN
3	8066095765	MODELO ESPECIAL 6/ 12 BTL
4	7861500001	STELLA ARTOIS 6/ 11.2 BTL
5	7289000011	HEINEKEN 6/ 12 BTL



CVS # 1770 WARM

Reset Timing 2019 SPRING

Address: 325 MAMARONECK AVE | City: WHITE PLAINS | State: NY

**REVERSE VIEW (ONLY IF NEEDED)**

Segment:  
2 of 4



**Segment # 2 : 2\_3 0.00 In**

POS	UPC	NAME
1	8066095757	MODELO ESPECIAL 12/ 12 BTL
2	8066095787	MODELO NEGRA 12/ 12 BTL

**Segment # 2 : 2\_2 25.00 In**

POS	UPC	NAME
1	8066095715	MODELO ESPECIAL 12/ 12 CAN
2	7289000020	HEINEKEN 12/ 12 CAN
3	8248812300	BECKS 12/ 12 BTL
4	1820096721	MICHELOB ULTRA 18/ 12 CAN
5	1820053218	BUD LIGHT 18/ 12 CAN

**Segment # 2 : 2\_1 48.00 In**

POS	UPC	NAME
1	7289000159	HEINEKEN LIGHT 12/ 12 BTL
2	7289010016	AMSTEL LIGHT 12/ 12 BTL
3	85389700227	BON AND VIV SPIKED SELTZER VARIETY 12/ 12 CAN
4	3410000342	REDDS WICKED 12/ 10 CAN
5	8769200660	ANGRY ORCHARD ROSE 6/ 12 BTL
6	8834510151	STRONGBOW GOLD 6/ 11.2 BTL
7	81760601000	CAPTAIN LAWRENCE FRESHCHESTER 6/ 12 BTL



CVS # 1770 WARM

Reset Timing 2019 SPRING

Address: 325 MAMARONECK AVE | City: WHITE PLAINS | State: NY

**REVERSE VIEW (ONLY IF NEEDED)**

Segment:  
3 of 4



**Segment # 2 : 2\_3 0.00 In**

POS	UPC	NAME
1	7289000016	HEINEKEN 12/ 12 BTL
2	78615000014	STELLA ARTOIS 12/ 11.2 BTL
3	1820053308	BUD LIGHT 18/ 12 BTL
4	1820053030	BUD LIGHT 30/ 12 CAN
5	1820011030	BUD 30/ 12 CAN

**Segment # 2 : 2\_2 25.00 In**

POS	UPC	NAME
1	1820053047	BUD LIGHT 12/ 12 CAN
2	1820000769	BUD LIGHT 12/ 12 BTL
3	1820011218	BUD 18/ 12 CAN
4	7199030017	COORS LIGHT 18/ 12 CAN

**Segment # 2 : 2\_1 48.00 In**

POS	UPC	NAME
1	81760601020	CAPTAIN LAWRENCE IPA 6/ 12 BTL
2	7199009511	BLUE MOON BELGIAN WHITE 6/ 12 BTL
3	7199009516	BLUE MOON BELGIAN WHITE 12/ 12 BTL
4	1820015981	SHOCK TOP BELGIAN WHITE 12/ 12 BTL
5	64286090024	FOUNDERS ALL DAY SESSION IPA 15/ 12 CAN
6	1820005990	MICHELOB ULTRA 12/ 12 BTL



CVS # 1770 WARM

Reset Timing 2019 SPRING

Address: 325 MAMARONECK AVE | City: WHITE PLAINS | State: NY

**REVERSE VIEW (ONLY IF NEEDED)**

Segment:  
4 of 4



**Segment # 2 : 2\_3 0.00 In**

POS	UPC	NAME
1	7199030030	COORS LIGHT 30/ 12 CAN
2	7199030078	COORS LIGHT 18/ 12 BTL
3	7199031600	COORS LIGHT 24/ 12 CAN
4	7199010020	COORS BANQUET 18/ 12 CAN
5	3410057306	LITE 24/ 12 CAN
6	1820028443	NATURAL ICE 15/ 12 CAN

**Segment # 2 : 2\_2 25.00 In**

POS	UPC	NAME
1	7199000048	COORS LIGHT 12/ 12 CAN
2	7199030069	COORS LIGHT 12/ 12 BTL
3	3410057340	LITE 18/ 12 CAN
4	1820020077	NATURAL LIGHT 15/ 12 CAN

**Segment # 2 : 2\_1 48.00 In**

POS	UPC	NAME
1	1820011047	BUD 12/ 12 CAN
2	1820000771	BUD 12/ 12 BTL
3	3410057509	LITE 12/ 12 BTL
4	3410057636	LITE 12/ 12 CAN
5	3410001509	HIGH LIFE 12/ 12 BTL
6	3410001636	HIGH LIFE 12/ 12 CAN





CVS # 1770 WARM

Address: 325 MAMARONECK AVE | City: WHITE PLAINS | State: NY

Chain/StoreNumer: CVS - EAST 1770

Reset Name: 2019 SPRING

Planogram Name: 1770\_16ft\_OPEN\_WARM

CVS PHARMA... Store # 1770 H: 5 ft W: 16 ft D: 2 ft # of segments: 4

Name: 2\_1 W:192.00 in D:16.00 in Avail Space:-0.31 in Ht Space: 11.00 in

ID	UPC	Barcode	Name	Category	HFacings	Orientation	Units
15400	8066095605	0 80660 95605 3	CORONA 6/12 BTL	ABOVE PREMIUM	1	Front	3
15426	8066095695	0 80660 95695 4	CORONA 12/12 CAN	ABOVE PREMIUM	1	Side 90	2
15442	8066095765	0 80660 95765 4	MODELO ESPECIAL 6/12 BTL	ABOVE PREMIUM	1	Front	2
14089	78615000001	7 86150 00001 4	STELLA ARTOIS 6/11.2 BTL	ABOVE PREMIUM	2	Side	4
11298	7289000011	0 72890 00011 8	HEINEKEN 6/12 BTL	ABOVE PREMIUM	2	Side	4
11342	7289000159	0 72890 00159 7	HEINEKEN LIGHT 12/12 BTL	ABOVE PREMIUM	1	Front	2
11384	7289010016	0 72890 10016 0	AMSTEL LIGHT 12/12 BTL	ABOVE PREMIUM	1	Front	2
19178	85389700227	8 53897 00227 1	BON AND VIV SPIKED SELTZE...	ABOVE PREMIUM	1	Front 90	2
2951	3410000342	0 34100 00342 5	REDD'S WICKED 12/10 CAN	ABOVE PREMIUM	1	Top 90	2
65019	8769200660	0 87692 00660 2	ANGRY ORCHARD ROSE 6/12 ...	ABOVE PREMIUM	2	Side	4
22457	8834510151	0 88345 10151 4	STRONGBOW GOLD 6/11.2 BTL	ABOVE PREMIUM	1	Side	2
15955	81760601000	8 17606 01000 1	CAPTAIN LAWRENCE FRESHC...	ABOVE PREMIUM	1	Side	2
15961	81760601020	8 17606 01020 9	CAPTAIN LAWRENCE IPA 6/12 ...	ABOVE PREMIUM	1	Side	2
10180	7199009511	0 71990 09511 6	BLUE MOON BELGIAN WHITE 6...	ABOVE PREMIUM	1	Side	2
10183	7199009516	0 71990 09516 1	BLUE MOON BELGIAN WHITE 1...	ABOVE PREMIUM	1	Front	2
1376	1820015981	0 18200 15981 7	SHOCK TOP BELGIAN WHITE 1...	ABOVE PREMIUM	1	Front	2



CVS # 1770 WARM

Address: 325 MAMARONECK AVE | City: WHITE PLAINS | State: NY

Chain/StoreNumer: CVS - EAST 1770

Reset Name: 2019 SPRING

Planogram Name: 1770\_16ft\_OPEN\_WARM

7044	64286090024	6 42860 90024 5	FOUNDERS ALL DAY SESSION...	ABOVE PREMIUM	1	Side 90	2
1228	1820005990	0 18200 05990 2	MICHELOB ULTRA 12/12 BTL	ABOVE PREMIUM	1	Front	2
1297	1820011047	0 18200 11047 4	BUD 12/12 CAN	PREMIUM	1	Top 90	2
1058	1820000771	0 18200 00771 2	BUD 12/12 BTL	PREMIUM	1	Front	2
3565	3410057509	0 34100 57509 0	LITE 12/12 BTL	PREMIUM	1	Front	2
3579	3410057636	0 34100 57636 3	LITE 12/12 CAN	PREMIUM	1	Side 90	2
3198	3410001509	0 34100 01509 1	HIGH LIFE 12/12 BTL	ECONOMY	1	Front	2
3202	3410001636	0 34100 01636 4	HIGH LIFE 12/12 CAN	ECONOMY	1	Side 90	2

Name: 2\_2    W:192.00 in    D:16.00 in    Avail Space: 1.84 in    Ht Space: 22.00 in

ID	UPC	Barcode	Name	Category	HFacings	Orientation	Units
15416	8066095675	0 80660 95675 6	CORONA LIGHT 12/12 BTL	ABOVE PREMIUM	1	Front	4
15403	8066095615	0 80660 95615 2	CORONA 12/12 BTL	ABOVE PREMIUM	3	Front	12
15429	8066095715	0 80660 95715 9	MODELO ESPECIAL 12/12 CAN	ABOVE PREMIUM	2	Top	16
11301	7289000020	0 72890 00020 0	HEINEKEN 12/12 CAN	ABOVE PREMIUM	1	Side 90	4
16691	8248812300	0 82488 12300 6	BECKS 12/12 BTL	ABOVE PREMIUM	1	Front	4
1850	1820096721	0 18200 96721 4	MICHELOB ULTRA 18/12 CAN	ABOVE PREMIUM	1	Side	3
1667	1820053218	0 18200 53218 4	BUD LIGHT 18/12 CAN	PREMIUM	1	Top	8
1659	1820053047	0 18200 53047 0	BUD LIGHT 12/12 CAN	PREMIUM	2	Side 90	8
1056	1820000769	0 18200 00769 9	BUD LIGHT 12/12 BTL	PREMIUM	1	Front	4



CVS # 1770 WARM

Address: 325 MAMARONECK AVE | City: WHITE PLAINS | State: NY

Chain/StoreNumer: CVS - EAST 1770

Reset Name: 2019 SPRING

Planogram Name: 1770\_16ft\_OPEN\_WARM

1307	1820011218		BUD 18/12 CAN	PREMIUM	1	Side 90	4
10329	7199030017		COORS LIGHT 18/12 CAN	PREMIUM	1	Top	8
10164	7199000048		COORS LIGHT 12/12 CAN	PREMIUM	2	Side 90	8
10348	7199030069		COORS LIGHT 12/12 BTL	PREMIUM	1	Front	4
3552	3410057340		LITE 18/12 CAN	PREMIUM	1	Side 90	4
61975	1820020077		NATURAL LIGHT 15/12 CAN	ECONOMY	1	Side 90	4

Name: 2\_3    W:192.00 in    D:16.00 in    Avail Space: 0.96 in    Ht Space: 24.00 in

ID	UPC	Barcode	Name	Category	HFacings	Orientation	Units
15403	8066095615		CORONA 12/12 BTL	ABOVE PREMIUM	3	Front	12
15436	8066095757		MODELO ESPECIAL 12/12 BTL	ABOVE PREMIUM	4	Front	12
15449	8066095787		MODELO NEGRA 12/12 BTL	ABOVE PREMIUM	1	Front	3
11300	7289000016		HEINEKEN 12/12 BTL	ABOVE PREMIUM	2	Front	8
14094	78615000014		STELLA ARTOIS 12/11.2 BTL	ABOVE PREMIUM	1	Front	4
1670	1820053308		BUD LIGHT 18/12 BTL	PREMIUM	1	Side	2
1656	1820053030		BUD LIGHT 30/12 CAN	PREMIUM	1	Side	2
1292	1820011030		BUD 30/12 CAN	PREMIUM	1	Side	2
10336	7199030030		COORS LIGHT 30/12 CAN	PREMIUM	1	Side	2
10352	7199030078		COORS LIGHT 18/12 BTL	PREMIUM	2	Side	4
10380	7199031600		COORS LIGHT 24/12 CAN	PREMIUM	1	Top 90	1






CVS # 1770 WARM

Address: 325 MAMARONECK AVE | City: WHITE PLAINS | State: NY

Chain/StoreNumer: CVS - EAST 1770

Reset Name: 2019 SPRING

Planogram Name: 1770\_16ft\_OPEN\_WARM

10234	7199010020		COORS BANQUET 18/12 CAN	PREMIUM	1	Top 90	2
3541	3410057306		LITE 24/12 CAN	PREMIUM	1	Top 90	1
66288	1820028443		NATURAL ICE 15/12 CAN	ECONOMY	1	Side 90	4