





CVS # 1997 COLD

Address: 10 S BEDFORD RD | City: MOUNT KISCO | State: NY

Chain/StoreNumer: CVS - EAST 1997

Reset Name: 2019 SPRING

Planogram Name: 1997_5_DOOR_COLD

Segment # 1		: 1_4		DEPTH: 23 in	WIDTH: 23 in	DISTANCE FROM TOP OF BASE SHELF TO BOTTOM OF SHELF:0.00 in		
POS #	FAC	UPC	NAME	CASES	CAPACITY	UNITS HIGH	Category	
1	1	7861500014	STELLA ARTOIS 12/11.2 BTL	2.0	4	1	ABOVE PREMIUM	
2	1	7289000016	HEINEKEN 12/12 BTL	2.0	4	1	ABOVE PREMIUM	
3	1	8066095615	CORONA 12/12 BTL	2.0	4	1	ABOVE PREMIUM	

Segment # 1		: 1_3		DEPTH: 23 in	WIDTH: 23 in	DISTANCE FROM TOP OF BASE SHELF TO BOTTOM OF SHELF:21.00 in		
POS #	FAC	UPC	NAME	CASES	CAPACITY	UNITS HIGH	Category	
1	1	78615000001	STELLA ARTOIS 6/11.2 BTL	0.8	3	1	ABOVE PREMIUM	
2	1	7289000011	HEINEKEN 6/12 BTL	0.8	3	1	ABOVE PREMIUM	
3	1	7289000016	HEINEKEN 12/12 BTL	1.0	2	1	ABOVE PREMIUM	
4	1	7289000020	HEINEKEN 12/12 CAN	1.0	2	1	ABOVE PREMIUM	

Segment # 1		: 1_2		DEPTH: 23 in	WIDTH: 23 in	DISTANCE FROM TOP OF BASE SHELF TO BOTTOM OF SHELF:32.00 in		
POS #	FAC	UPC	NAME	CASES	CAPACITY	UNITS HIGH	Category	
1	1	7199009516	BLUE MOON BELGIAN WHITE 12/12 BTL	1.0	2	1	ABOVE PREMIUM	
2	1	7289000159	HEINEKEN LIGHT 12/12 BTL	1.0	2	1	ABOVE PREMIUM	
3	1	8248812300	BECKS 12/12 BTL	1.0	2	1	ABOVE PREMIUM	

Segment # 1		: 1_1		DEPTH: 23 in	WIDTH: 23 in	DISTANCE FROM TOP OF BASE SHELF TO BOTTOM OF SHELF:43.00 in		
POS #	FAC	UPC	NAME	CASES	CAPACITY	UNITS HIGH	Category	
1	1	75452700022	NEW BELGIUM FAT TIRE 6/12 BTL	1.0	4	1	ABOVE PREMIUM	
2	1	81760601020	CAPTAIN LAWRENCE IPA 6/12 BTL	0.8	3	1	ABOVE PREMIUM	
3	1	81760601000	CAPTAIN LAWRENCE FRESHCHESTER 6/12 BTL	0.8	3	1	ABOVE PREMIUM	
4	1	7199009511	BLUE MOON BELGIAN WHITE 6/12 BTL	0.8	3	1	ABOVE PREMIUM	

Segment # 2		: 2_4		DEPTH: 23 in	WIDTH: 23 in	DISTANCE FROM TOP OF BASE SHELF TO BOTTOM OF SHELF:0.00 in		
POS #	FAC	UPC	NAME	CASES	CAPACITY	UNITS HIGH	Category	
1	2	8066095615	CORONA 12/12 BTL	4.0	8	2	ABOVE PREMIUM	

Segment # 2		: 2_3		DEPTH: 23 in	WIDTH: 23 in	DISTANCE FROM TOP OF BASE SHELF TO BOTTOM OF SHELF:21.00 in		
POS #	FAC	UPC	NAME	CASES	CAPACITY	UNITS HIGH	Category	
1	1	8066095621	CORONA LIGHT 12/12 CAN	1.5	3	1	ABOVE PREMIUM	
2	1	8066095680	CORONA 18/12 BTL	2.0	2	1	ABOVE PREMIUM	

Segment # 2		: 2_2		DEPTH: 23 in	WIDTH: 23 in	DISTANCE FROM TOP OF BASE SHELF TO BOTTOM OF SHELF:32.00 in		
POS #	FAC	UPC	NAME	CASES	CAPACITY	UNITS HIGH	Category	
1	1	8066095625	CORONA LIGHT 6/12 BTL	0.5	2	1	ABOVE PREMIUM	
2	1	3354495053	CORONA FAMILIAR 12/12 BTL	1.0	2	1	ABOVE PREMIUM	
3	1	8066095605	CORONA 6/12 BTL	1.0	4	1	ABOVE PREMIUM	

Segment # 2		: 2_1		DEPTH: 23 in	WIDTH: 23 in	DISTANCE FROM TOP OF BASE SHELF TO BOTTOM OF SHELF:43.00 in		
POS #	FAC	UPC	NAME	CASES	CAPACITY	UNITS HIGH	Category	



CVS # 1997 COLD

Address: 10 S BEDFORD RD | City: MOUNT KISCO | State: NY

Chain/StoreNumer: CVS - EAST 1997

Reset Name: 2019 SPRING

Planogram Name: 1997_5_DOOR_COLD

1	1	8066095675	CORONA LIGHT 12/12 BTL	1.0	2	1	ABOVE PREMIUM
2	1	8066095695	CORONA 12/12 CAN	1.0	2	1	ABOVE PREMIUM
3	1	8066095605	CORONA 6/12 BTL	0.5	2	1	ABOVE PREMIUM

Segment # 3 : 3_4 DEPTH: 23 in WIDTH: 23 in DISTANCE FROM TOP OF BASE SHELF TO BOTTOM OF SHELF:0.00 in

POS	# FAC	UPC	NAME	CASES	CAPACITY	UNITS HIGH	Category
1	1	8066095715	MODELO ESPECIAL 12/12 CAN	4.0	8	1	ABOVE PREMIUM
2	1	8066095757	MODELO ESPECIAL 12/12 BTL	2.0	4	1	ABOVE PREMIUM

Segment # 3 : 3_3 DEPTH: 23 in WIDTH: 23 in DISTANCE FROM TOP OF BASE SHELF TO BOTTOM OF SHELF:21.00 in

POS	# FAC	UPC	NAME	CASES	CAPACITY	UNITS HIGH	Category
1	1	8066095715	MODELO ESPECIAL 12/12 CAN	2.0	4	1	ABOVE PREMIUM
2	1	8066095757	MODELO ESPECIAL 12/12 BTL	1.0	2	1	ABOVE PREMIUM

Segment # 3 : 3_2 DEPTH: 23 in WIDTH: 23 in DISTANCE FROM TOP OF BASE SHELF TO BOTTOM OF SHELF:32.00 in

POS	# FAC	UPC	NAME	CASES	CAPACITY	UNITS HIGH	Category
1	1	3354495041	CORONA PREMIER 6/12 BTL	0.5	2	1	ABOVE PREMIUM
2	1	8066095715	MODELO ESPECIAL 12/12 CAN	1.0	2	1	ABOVE PREMIUM
3	1	8066095757	MODELO ESPECIAL 12/12 BTL	1.0	2	1	ABOVE PREMIUM

Segment # 3 : 3_1 DEPTH: 23 in WIDTH: 23 in DISTANCE FROM TOP OF BASE SHELF TO BOTTOM OF SHELF:43.00 in

POS	# FAC	UPC	NAME	CASES	CAPACITY	UNITS HIGH	Category
1	1	3354495042	CORONA PREMIER 12/12 BTL	1.0	2	1	ABOVE PREMIUM
2	1	8066095765	MODELO ESPECIAL 6/12 BTL	0.8	3	1	ABOVE PREMIUM
3	1	7231163012	DOS EQUIS 6/12 BTL	0.5	2	1	ABOVE PREMIUM

Segment # 4 : 4_4 DEPTH: 23 in WIDTH: 23 in DISTANCE FROM TOP OF BASE SHELF TO BOTTOM OF SHELF:0.00 in

POS	# FAC	UPC	NAME	CASES	CAPACITY	UNITS HIGH	Category
1	1	1820053218	BUD LIGHT 18/12 CAN	3.0	3	1	PREMIUM
2	1	1820011218	BUD 18/12 CAN	3.0	3	1	PREMIUM
3	1	7199030017	COORS LIGHT 18/12 CAN	5.0	5	1	PREMIUM
4	1	7199000048	COORS LIGHT 12/12 CAN	2.0	4	1	PREMIUM

Segment # 4 : 4_3 DEPTH: 23 in WIDTH: 23 in DISTANCE FROM TOP OF BASE SHELF TO BOTTOM OF SHELF:20.00 in

POS	# FAC	UPC	NAME	CASES	CAPACITY	UNITS HIGH	Category
1	1	1820000769	BUD LIGHT 12/12 BTL	1.0	2	1	PREMIUM
2	1	1820000771	BUD 12/12 BTL	1.0	2	1	PREMIUM
3	1	7199030069	COORS LIGHT 12/12 BTL	1.0	2	1	PREMIUM

Segment # 4 : 4_2 DEPTH: 23 in WIDTH: 23 in DISTANCE FROM TOP OF BASE SHELF TO BOTTOM OF SHELF:31.00 in

POS	# FAC	UPC	NAME	CASES	CAPACITY	UNITS HIGH	Category
1	1	1820020079	BUD LIGHT ORANGE 6/12 BTL	0.8	3	1	ABOVE PREMIUM
2	1	1820053047	BUD LIGHT 12/12 CAN	1.0	2	1	PREMIUM
3	1	1820011047	BUD 12/12 CAN	1.0	2	1	PREMIUM



CVS # 1997 COLD

Address: 10 S BEDFORD RD | City: MOUNT KISCO | State: NY

Chain/StoreNumer: CVS - EAST 1997

Reset Name: 2019 SPRING

Planogram Name: 1997_5_DOOR_COLD

4 1 7199000008 COORS LIGHT 6/12 CAN 1.5 6 1 PREMIUM

Segment # 4 : 4_1 DEPTH: 23 In WIDTH: 23 In DISTANCE FROM TOP OF BASE SHELF TO BOTTOM OF SHELF:43.00 In

Table with 8 columns: POS #, FAC, UPC, NAME, CASES, CAPACITY, UNITS HIGH, Category. Rows include SOL 12/12 BTL, CORONA REFRESCA VARIETY 12/12 CAN, MICHELOB ULTRA 6/12 BTL, COORS LIGHT 3/24 CAN.

Segment # 5 : 5_4 DEPTH: 23 In WIDTH: 23 In DISTANCE FROM TOP OF BASE SHELF TO BOTTOM OF SHELF:0.00 In

Table with 8 columns: POS #, FAC, UPC, NAME, CASES, CAPACITY, UNITS HIGH, Category. Rows include COORS LIGHT 18/12 BTL, LITE 18/12 CAN, NATURAL LIGHT 15/12 CAN, NATURAL ICE 15/12 CAN.

Segment # 5 : 5_3 DEPTH: 23 In WIDTH: 23 In DISTANCE FROM TOP OF BASE SHELF TO BOTTOM OF SHELF:20.00 In

Table with 8 columns: POS #, FAC, UPC, NAME, CASES, CAPACITY, UNITS HIGH, Category. Rows include LITE 12/12 BTL, LITE 12/12 CAN, HIGH LIFE 12/12 BTL.

Segment # 5 : 5_2 DEPTH: 23 In WIDTH: 23 In DISTANCE FROM TOP OF BASE SHELF TO BOTTOM OF SHELF:32.00 In

Table with 8 columns: POS #, FAC, UPC, NAME, CASES, CAPACITY, UNITS HIGH, Category. Rows include ARNOLD PALMER SPIKED HALF AND HALF 1/24 CAN, BUD LIGHT 1/25 CAN, COORS LIGHT 1/24 CAN, COORS BANQUET 1/24 CAN, LITE 1/24 CAN, NATURAL ICE 1/25 CAN.

Segment # 5 : 5_1 DEPTH: 23 In WIDTH: 23 In DISTANCE FROM TOP OF BASE SHELF TO BOTTOM OF SHELF:44.00 In

Table with 8 columns: POS #, FAC, UPC, NAME, CASES, CAPACITY, UNITS HIGH, Category. Rows include FOSTERS 1/25.4 CAN, FOSTERS PREMIUM 1/25.4 CAN, HEINEKEN 1/24 CAN, CORONA 1/24 CAN, MODELO ESPECIAL 1/24 CAN, BUD LIGHT LIME STRAW-BER-RITA 1/25 CAN, REDDS WICKED 1/24 CAN.

REVERSE VIEW (ONLY IF NEEDED)





CVS # 1997 COLD

Reset Timing 2019 SPRING

Address: 10 S BEDFORD RD | City: MOUNT KISCO | State: NY

REVERSE VIEW (ONLY IF NEEDED)

Segment:
1 of 5



Segment # 1 : 1_4 0.00 In

POS	UPC	NAME
1	7861500014	STELLA ARTOIS 12/ 11.2 BTL
2	7289000016	HEINEKEN 12/ 12 BTL
3	8066095615	CORONA 12/ 12 BTL

Segment # 1 : 1_3 21.00 In

POS	UPC	NAME
1	7861500001	STELLA ARTOIS 6/ 11.2 BTL
2	7289000011	HEINEKEN 6/ 12 BTL
3	7289000016	HEINEKEN 12/ 12 BTL
4	7289000020	HEINEKEN 12/ 12 CAN

Segment # 1 : 1_2 32.00 In

POS	UPC	NAME
1	7199009516	BLUE MOON BELGIAN WHITE 12/ 12 BTL
2	7289000159	HEINEKEN LIGHT 12/ 12 BTL
3	8248812300	BECKS 12/ 12 BTL

Segment # 1 : 1_1 43.00 In

POS	UPC	NAME
1	75452700022	NEW BELGIUM FAT TIRE 6/ 12 BTL
2	81760601020	CAPTAIN LAWRENCE IPA 6/ 12 BTL
3	81760601000	CAPTAIN LAWRENCE FRESHCHESTER 6/ 12 BTL
4	7199009511	BLUE MOON BELGIAN WHITE 6/ 12 BTL



CVS # 1997 COLD

Reset Timing 2019 SPRING

Address: 10 S BEDFORD RD | City: MOUNT KISCO | State: NY

REVERSE VIEW (ONLY IF NEEDED)

Segment:
2 of 5



Segment # 2 : 2_4 0.00 In

POS	UPC	NAME
1	8066095615	CORONA 12/ 12 BTL

Segment # 2 : 2_3 21.00 In

POS	UPC	NAME
1	8066095621	CORONA LIGHT 12/ 12 CAN
2	8066095680	CORONA 18/ 12 BTL

Segment # 2 : 2_2 32.00 In

POS	UPC	NAME
1	8066095625	CORONA LIGHT 6/ 12 BTL
2	3354495053	CORONA FAMILIAR 12/ 12 BTL
3	8066095605	CORONA 6/ 12 BTL

Segment # 2 : 2_1 43.00 In

POS	UPC	NAME
1	8066095675	CORONA LIGHT 12/ 12 BTL
2	8066095695	CORONA 12/ 12 CAN
3	8066095605	CORONA 6/ 12 BTL



CVS # 1997 COLD

Reset Timing 2019 SPRING

Address: 10 S BEDFORD RD | City: MOUNT KISCO | State: NY

REVERSE VIEW (ONLY IF NEEDED)

Segment:
3 of 5



Segment # 3 : 3_4 0.00 In

POS	UPC	NAME
1	8066095715	MODELO ESPECIAL 12/ 12 CAN
2	8066095757	MODELO ESPECIAL 12/ 12 BTL

Segment # 3 : 3_3 21.00 In

POS	UPC	NAME
1	8066095715	MODELO ESPECIAL 12/ 12 CAN
2	8066095757	MODELO ESPECIAL 12/ 12 BTL

Segment # 3 : 3_2 32.00 In

POS	UPC	NAME
1	3354495041	CORONA PREMIER 6/ 12 BTL
2	8066095715	MODELO ESPECIAL 12/ 12 CAN
3	8066095757	MODELO ESPECIAL 12/ 12 BTL

Segment # 3 : 3_1 43.00 In

POS	UPC	NAME
1	3354495042	CORONA PREMIER 12/ 12 BTL
2	8066095765	MODELO ESPECIAL 6/ 12 BTL
3	7231163012	DOS EQUIS 6/ 12 BTL



CVS # 1997 COLD

Reset Timing 2019 SPRING

Address: 10 S BEDFORD RD | City: MOUNT KISCO | State: NY

REVERSE VIEW (ONLY IF NEEDED)

Segment:
4 of 5



Segment # 4 : 4_4 0.00 In

POS	UPC	NAME
1	1820053218	BUD LIGHT 18/ 12 CAN
2	1820011218	BUD 18/ 12 CAN
3	7199030017	COORS LIGHT 18/ 12 CAN
4	7199000048	COORS LIGHT 12/ 12 CAN

Segment # 4 : 4_3 20.00 In

POS	UPC	NAME
1	1820000769	BUD LIGHT 12/ 12 BTL
2	1820000771	BUD 12/ 12 BTL
3	7199030069	COORS LIGHT 12/ 12 BTL

Segment # 4 : 4_2 31.00 In

POS	UPC	NAME
1	1820020079	BUD LIGHT ORANGE 6/ 12 BTL
2	1820053047	BUD LIGHT 12/ 12 CAN
3	1820011047	BUD 12/ 12 CAN
4	7199000008	COORS LIGHT 6/ 12 CAN

Segment # 4 : 4_1 43.00 In

POS	UPC	NAME
1	7231123021	SOL 12/ 12 BTL
2	3354400013	CORONA REFRESCA VARIETY 12/ 12 CAN
3	1820005989	MICHELOB ULTRA 6/ 12 BTL
4	7199030120	COORS LIGHT 3/ 24 CAN



CVS # 1997 COLD

Reset Timing 2019 SPRING

Address: 10 S BEDFORD RD | City: MOUNT KISCO | State: NY

REVERSE VIEW (ONLY IF NEEDED)

Segment:
5 of 5



Segment # 5 : 5_4 0.00 In

POS	UPC	NAME
1	7199030078	COORS LIGHT 18/ 12 BTL
2	3410057340	LITE 18/ 12 CAN
3	1820020077	NATURAL LIGHT 15/ 12 CAN
4	1820028443	NATURAL ICE 15/ 12 CAN

Segment # 5 : 5_3 20.00 In

POS	UPC	NAME
1	3410057509	LITE 12/ 12 BTL
2	3410057636	LITE 12/ 12 CAN
3	3410001509	HIGH LIFE 12/ 12 BTL

Segment # 5 : 5_2 32.00 In

POS	UPC	NAME
1	61300874829	ARNOLD PALMER SPIKED HALF AND HALF 1/24 CAN
2	1820025001	BUD LIGHT 1/25 CAN
3	1820025000	BUD 1/25 CAN
4	7199030065	COORS LIGHT 1/24 CAN
5	7199010071	COORS BANQUET 1/24 CAN
6	3410000355	LITE 1/24 CAN
7	1820025008	NATURAL ICE 1/25 CAN

Segment # 5 : 5_1 44.00 In

POS	UPC	NAME
1	7089701331	FOSTERS 1/25.4 CAN
2	7089718331	FOSTERS PREMIUM 1/25.4 CAN
3	7289000119	HEINEKEN 1/24 CAN
4	8066095643	CORONA 1/24 CAN
5	8066095721	MODELO ESPECIAL 1/24 CAN
6	1820025505	BUD LIGHT LIME STRAW-BER-RITA 1/25 CAN
7	3410000323	REDD'S WICKED 1/24 CAN



CVS # 1997 COLD

Address: 10 S BEDFORD RD | City: MOUNT KISCO | State: NY

Chain/StoreNumer: CVS - EAST 1997

Reset Name: 2019 SPRING

Planogram Name: 1997_5_DOOR_COLD

CVS PHARMA... Store # 1997 H: 4 ft 6.00 in W: 9 ft 7.00 in D: 1 ft 11.00 in # of segments: 5

Name: 1_1 W:23.00 in D:23.00 in Avail Space: 0.39 in Ht Space: 10.00 in

ID	UPC	Barcode	Name	Category	HFacings	Orientation	Units
13009	75452700022	7 54527 00022 6	NEW BELGIUM FAT TIRE 6/12 B...	ABOVE PREMIUM	1	Front	4
15961	81760601020	8 17606 01020 9	CAPTAIN LAWRENCE IPA 6/12 ...	ABOVE PREMIUM	1	Side	3
15955	81760601000	8 17606 01000 1	CAPTAIN LAWRENCE FRESHC...	ABOVE PREMIUM	1	Side	3
10180	7199009511	0 71990 09511 6	BLUE MOON BELGIAN WHITE 6...	ABOVE PREMIUM	1	Side	3

Name: 1_2 W:23.00 in D:23.00 in Avail Space: 0.88 in Ht Space: 10.00 in

ID	UPC	Barcode	Name	Category	HFacings	Orientation	Units
10183	7199009516	0 71990 09516 1	BLUE MOON BELGIAN WHITE 1...	ABOVE PREMIUM	1	Side	2
11342	7289000159	0 72890 00159 7	HEINEKEN LIGHT 12/12 BTL	ABOVE PREMIUM	1	Side	2
16691	8248812300	0 82488 12300 6	BECKS 12/12 BTL	ABOVE PREMIUM	1	Side	2

Name: 1_3 W:23.00 in D:23.00 in Avail Space: 0.96 in Ht Space: 10.00 in

ID	UPC	Barcode	Name	Category	HFacings	Orientation	Units
14089	78615000001	7 86150 00001 4	STELLA ARTOIS 6/11.2 BTL	ABOVE PREMIUM	1	Side	3
11298	7289000011	0 72890 00011 8	HEINEKEN 6/12 BTL	ABOVE PREMIUM	1	Side	3
11300	7289000016	0 72890 00016 3	HEINEKEN 12/12 BTL	ABOVE PREMIUM	1	Side	2
11301	7289000020	0 72890 00020 0	HEINEKEN 12/12 CAN	ABOVE PREMIUM	1	Side	2

Name: 1_4 W:23.00 in D:23.00 in Avail Space: 0.43 in Ht Space: 20.00 in

ID	UPC	Barcode	Name	Category	HFacings	Orientation	Units
14094	78615000014	7 86150 00014 4	STELLA ARTOIS 12/11.2 BTL	ABOVE PREMIUM	1	Side	4
11300	7289000016	0 72890 00016 3	HEINEKEN 12/12 BTL	ABOVE PREMIUM	1	Side	4
15403	8066095615	0 80660 95615 2	CORONA 12/12 BTL	ABOVE PREMIUM	1	Side	4



CVS # 1997 COLD

Address: 10 S BEDFORD RD | City: MOUNT KISCO | State: NY

Chain/StoreNumer: CVS - EAST 1997

Reset Name: 2019 SPRING

Planogram Name: 1997_5_DOOR_COLD

Name: 2_1		W:23.00 in	D:23.00 in	Avail Space: 2.76 in	Ht Space: 10.00 in		
ID	UPC	Barcode	Name	Category	HFacings	Orientation	Units
15416	8066095675		CORONA LIGHT 12/12 BTL	ABOVE PREMIUM	1	Front	2
15426	8066095695		CORONA 12/12 CAN	ABOVE PREMIUM	1	Side	2
15400	8066095605		CORONA 6/12 BTL	ABOVE PREMIUM	1	Side	2

Name: 2_2		W:23.00 in	D:23.00 in	Avail Space: 2.17 in	Ht Space: 10.00 in		
ID	UPC	Barcode	Name	Category	HFacings	Orientation	Units
15408	8066095625		CORONA LIGHT 6/12 BTL	ABOVE PREMIUM	1	Side	2
51878	3354495053		CORONA FAMILIAR 12/12 BTL	ABOVE PREMIUM	1	Side	2
15400	8066095605		CORONA 6/12 BTL	ABOVE PREMIUM	1	Front	4

Name: 2_3		W:23.00 in	D:23.00 in	Avail Space: 0.92 in	Ht Space: 10.00 in		
ID	UPC	Barcode	Name	Category	HFacings	Orientation	Units
15406	8066095621		CORONA LIGHT 12/12 CAN	ABOVE PREMIUM	1	Top 90	3
15417	8066095680		CORONA 18/12 BTL	ABOVE PREMIUM	1	Front	2

Name: 2_4		W:23.00 in	D:23.00 in	Avail Space: 2.96 in	Ht Space: 20.00 in		
ID	UPC	Barcode	Name	Category	HFacings	Orientation	Units
15403	8066095615		CORONA 12/12 BTL	ABOVE PREMIUM	2	Front	8

Name: 3_1		W:23.00 in	D:23.00 in	Avail Space: 0.95 in	Ht Space: 10.00 in		
ID	UPC	Barcode	Name	Category	HFacings	Orientation	Units
44952	3354495042		CORONA PREMIER 12/12 BTL	ABOVE PREMIUM	1	Side	2
15442	8066095765		MODELO ESPECIAL 6/12 BTL	ABOVE PREMIUM	1	Front	3
10813	7231163012		DOS EQUIS 6/12 BTL	ABOVE PREMIUM	1	Side	2

Name: 3_2		W:23.00 in	D:23.00 in	Avail Space: 0.33 in	Ht Space: 10.00 in		
ID	UPC	Barcode	Name	Category	HFacings	Orientation	Units



CVS # 1997 COLD

Address: 10 S BEDFORD RD | City: MOUNT KISCO | State: NY

Chain/StoreNumer: CVS - EAST 1997

Reset Name: 2019 SPRING

Planogram Name: 1997_5_DOOR_COLD

44964	3354495041		CORONA PREMIER 6/12 BTL	ABOVE PREMIUM	1	Side	2
15429	8066095715		MODELO ESPECIAL 12/12 CAN	ABOVE PREMIUM	1	Side	2
15436	8066095757		MODELO ESPECIAL 12/12 BTL	ABOVE PREMIUM	1	Front	2

Name: 3_3 W:23.00 in D:23.00 in Avail Space: 2.43 in Ht Space: 10.00 in

ID	UPC	Barcode	Name	Category	HFacings	Orientation	Units
15429	8066095715		MODELO ESPECIAL 12/12 CAN	ABOVE PREMIUM	1	Side 90	4
15436	8066095757		MODELO ESPECIAL 12/12 BTL	ABOVE PREMIUM	1	Front	2

Name: 3_4 W:23.00 in D:23.00 in Avail Space: 2.43 in Ht Space: 20.00 in

ID	UPC	Barcode	Name	Category	HFacings	Orientation	Units
15429	8066095715		MODELO ESPECIAL 12/12 CAN	ABOVE PREMIUM	1	Side 90	8
15436	8066095757		MODELO ESPECIAL 12/12 BTL	ABOVE PREMIUM	1	Front	4

Name: 4_1 W:23.00 in D:23.00 in Avail Space: 1.83 in Ht Space: 10.00 in

ID	UPC	Barcode	Name	Category	HFacings	Orientation	Units
10790	7231123021		SOL 12/12 BTL	ABOVE PREMIUM	1	Side	2
86777	3354400013		CORONA REFRESCA VARIETY...	ABOVE PREMIUM	1	Side 90	2
1227	1820005989		MICHELOB ULTRA 6/12 BTL	ABOVE PREMIUM	1	Side	3
10372	7199030120		COORS LIGHT 3/24 CAN	PREMIUM	1	Side	2

Name: 4_2 W:23.00 in D:23.00 in Avail Space: 2.93 in Ht Space: 11.00 in

ID	UPC	Barcode	Name	Category	HFacings	Orientation	Units
67176	1820020079		BUD LIGHT ORANGE 6/12 BTL	ABOVE PREMIUM	1	Side	3
1659	1820053047		BUD LIGHT 12/12 CAN	PREMIUM	1	Top 90	2
1297	1820011047		BUD 12/12 CAN	PREMIUM	1	Top 90	2



CVS # 1997 COLD

Address: 10 S BEDFORD RD | City: MOUNT KISCO | State: NY

Chain/StoreNumer: CVS - EAST 1997

Reset Name: 2019 SPRING

Planogram Name: 1997_5_DOOR_COLD

10155	7199000008		COORS LIGHT 6/12 CAN	PREMIUM	1	Side	6
-------	------------	--	----------------------	---------	---	------	---

Name: 4_3 W:23.00 in D:23.00 in Avail Space: 0.88 in Ht Space: 10.00 in

ID	UPC	Barcode	Name	Category	HFacings	Orientation	Units
1056	182000769		BUD LIGHT 12/12 BTL	PREMIUM	1	Side	2
1058	182000771		BUD 12/12 BTL	PREMIUM	1	Side	2
10348	7199030069		COORS LIGHT 12/12 BTL	PREMIUM	1	Side	2

Name: 4_4 W:23.00 in D:23.00 in Avail Space: 0.22 in Ht Space: 19.00 in

ID	UPC	Barcode	Name	Category	HFacings	Orientation	Units
1667	1820053218		BUD LIGHT 18/12 CAN	PREMIUM	1	Top 90	3
1307	1820011218		BUD 18/12 CAN	PREMIUM	1	Top 90	3
10329	7199030017		COORS LIGHT 18/12 CAN	PREMIUM	1	Side 90	5
10164	7199000048		COORS LIGHT 12/12 CAN	PREMIUM	1	Side	4

Name: 5_1 W:23.00 in D:23.00 in Avail Space: 1.99 in Ht Space: 9.00 in

ID	UPC	Barcode	Name	Category	HFacings	Orientation	Units
9452	7089701331		FOSTERS 1/25.4 CAN	ABOVE PREMIUM	1	Front	6
9488	7089718331		FOSTERS PREMIUM 1/25.4 CAN	ABOVE PREMIUM	1	Front	6
11327	7289000119		HEINEKEN 1/24 CAN	ABOVE PREMIUM	1	Front	7
15415	8066095643		CORONA 1/24 CAN	ABOVE PREMIUM	1	Front	8
15431	8066095721		MODELO ESPECIAL 1/24 CAN	ABOVE PREMIUM	1	Front	7
1546	1820025505		BUD LIGHT LIME STRAW-BER...	ABOVE PREMIUM	1	Front	8
2935	3410000323		REDD'S WICKED 1/24 CAN	ABOVE PREMIUM	1	Front	8



CVS # 1997 COLD

Address: 10 S BEDFORD RD | City: MOUNT KISCO | State: NY

Chain/StoreNumer: CVS - EAST 1997

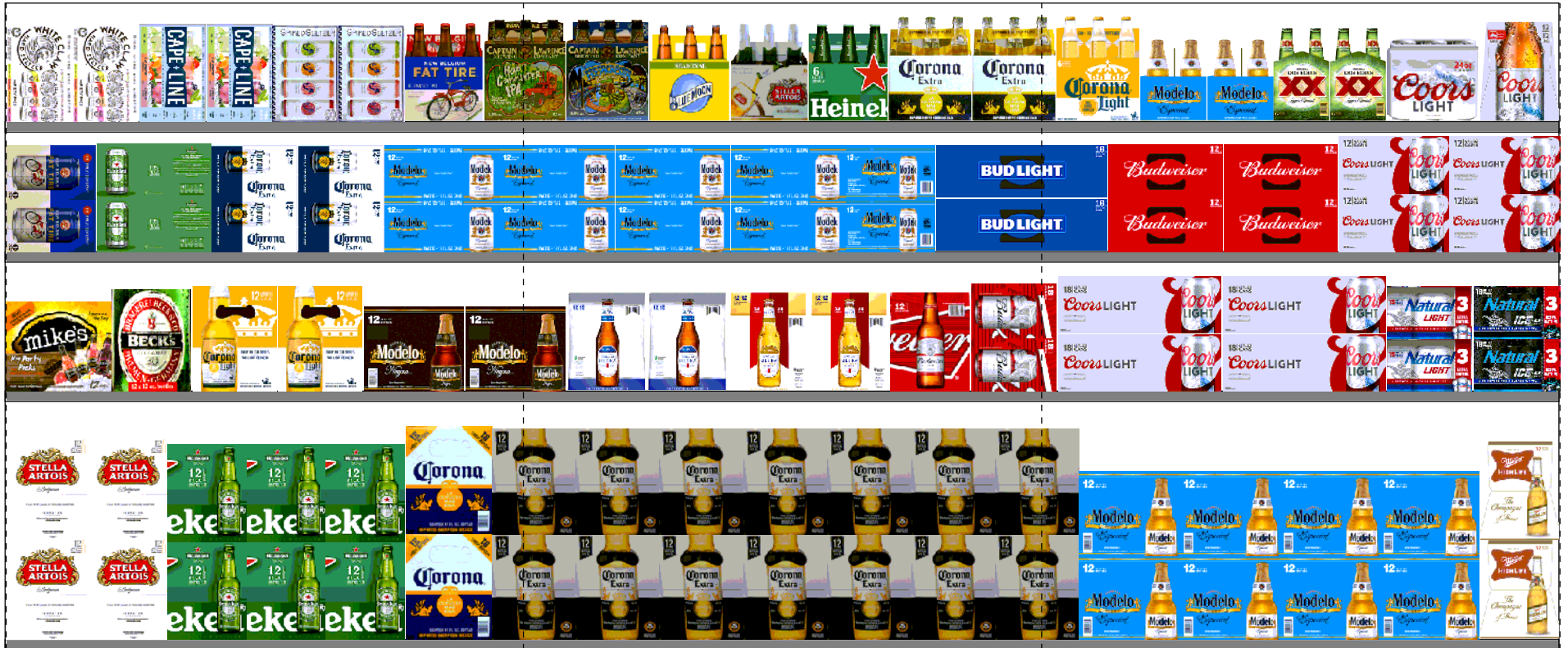
Reset Name: 2019 SPRING

Planogram Name: 1997_5_DOOR_COLD

Name: 5_2		W:23.00 in	D:23.00 in	Avail Space: 2.92 in		Ht Space: 11.00 in	
ID	UPC	Barcode	Name	Category	HFacings	Orientation	Units
66064	61300874829		ARNOLD PALMER SPIKED HAL...	ABOVE PREMIUM	1	Side	8
1521	1820025001		BUD LIGHT 1/25 CAN	PREMIUM	1	Front	8
1520	1820025000		BUD 1/25 CAN	PREMIUM	1	Front	8
10346	7199030065		COORS LIGHT 1/24 CAN	PREMIUM	1	Front	8
10243	7199010071		COORS BANQUET 1/24 CAN	PREMIUM	1	Front	8
2968	3410000355		LITE 1/24 CAN	PREMIUM	1	Front	8
1528	1820025008		NATURAL ICE 1/25 CAN	ECONOMY	1	Front	8

Name: 5_3		W:23.00 in	D:23.00 in	Avail Space: 0.47 in		Ht Space: 11.00 in	
ID	UPC	Barcode	Name	Category	HFacings	Orientation	Units
3565	3410057509		LITE 12/12 BTL	PREMIUM	1	Side	2
3579	3410057636		LITE 12/12 CAN	PREMIUM	1	Side 90	4
3198	3410001509		HIGH LIFE 12/12 BTL	ECONOMY	1	Side	2

Name: 5_4		W:23.00 in	D:23.00 in	Avail Space: 0.69 in		Ht Space: 19.00 in	
ID	UPC	Barcode	Name	Category	HFacings	Orientation	Units
10352	7199030078		COORS LIGHT 18/12 BTL	PREMIUM	1	Side	2
3552	3410057340		LITE 18/12 CAN	PREMIUM	1	Top 90	3
61975	1820020077		NATURAL LIGHT 15/12 CAN	ECONOMY	1	Side	2
66288	1820028443		NATURAL ICE 15/12 CAN	ECONOMY	1	Side	2





CVS # 1997 WARM

Address: 10 S BEDFORD RD | City: MOUNT KISCO | State: NY

Chain/StoreNumer: CVS - EAST 1997

Reset Name: 2019 SPRING

Planogram Name: 1997_12ft_OPEN_WARM

Segment # 2 : 2_4 DEPTH: 12 in WIDTH: 144 in DISTANCE FROM TOP OF BASE SHELF TO BOTTOM OF SHELF:0.00 in

POS #	FAC	UPC	NAME	CASES	CAPACITY	UNITS HIGH	Category
1	2	7861500014	STELLA ARTOIS 12/11.2 BTL	2.0	4	2	ABOVE PREMIUM
2	3	7289000016	HEINEKEN 12/12 BTL	3.0	6	3	ABOVE PREMIUM
3	1	8066095680	CORONA 18/12 BTL	2.0	2	1	ABOVE PREMIUM
1	7	8066095615	CORONA 12/12 BTL	7.0	14	7	ABOVE PREMIUM
1	2	8066095757	MODELO ESPECIAL 12/12 BTL	2.0	4	2	ABOVE PREMIUM
2	2	8066095757	MODELO ESPECIAL 12/12 BTL	2.0	4	2	ABOVE PREMIUM
3	1	3410001509	HIGH LIFE 12/12 BTL	1.0	2	1	ECONOMY

Segment # 2 : 2_3 DEPTH: 12 in WIDTH: 144 in DISTANCE FROM TOP OF BASE SHELF TO BOTTOM OF SHELF:23.00 in

POS #	FAC	UPC	NAME	CASES	CAPACITY	UNITS HIGH	Category
1	1	63598512998	MIKES HARD VARIETY PACK 12/11.2 BTL	0.5	1	1	ABOVE PREMIUM
2	1	8248812300	BECKS 12/12 BTL	0.5	1	1	ABOVE PREMIUM
3	2	8066095675	CORONA LIGHT 12/12 BTL	1.0	2	2	ABOVE PREMIUM
4	2	8066095787	MODELO NEGRA 12/12 BTL	1.0	2	2	ABOVE PREMIUM
1	2	1820005990	MICHELOB ULTRA 12/12 BTL	1.0	2	2	ABOVE PREMIUM
2	2	1820020083	MICHELOB ULTRA PURE GOLD 12/12 BTL	1.0	2	2	ABOVE PREMIUM
3	1	1820000771	BUD 12/12 BTL	0.5	1	1	PREMIUM
4	1	1820011218	BUD 18/12 CAN	2.0	2	1	PREMIUM
1	2	7199030017	COORS LIGHT 18/12 CAN	4.0	4	2	PREMIUM
2	1	1820020077	NATURAL LIGHT 15/12 CAN	1.0	2	1	ECONOMY
3	1	1820028443	NATURAL ICE 15/12 CAN	1.0	2	1	ECONOMY

Segment # 2 : 2_2 DEPTH: 12 in WIDTH: 144 in DISTANCE FROM TOP OF BASE SHELF TO BOTTOM OF SHELF:36.00 in

POS #	FAC	UPC	NAME	CASES	CAPACITY	UNITS HIGH	Category
1	1	75452700161	NEW BELGIUM FAT TIRE 12/12 CAN	1.0	2	1	ABOVE PREMIUM
2	1	7289000020	HEINEKEN 12/12 CAN	1.0	2	1	ABOVE PREMIUM
3	2	8066095695	CORONA 12/12 CAN	2.0	4	2	ABOVE PREMIUM
1	4	8066095715	MODELO ESPECIAL 12/12 CAN	4.0	8	4	ABOVE PREMIUM
2	1	8066095715	MODELO ESPECIAL 12/12 CAN	1.0	2	1	ABOVE PREMIUM
3	1	1820053218	BUD LIGHT 18/12 CAN	2.0	2	1	PREMIUM
1	2	1820011047	BUD 12/12 CAN	2.0	4	2	PREMIUM
2	2	7199000048	COORS LIGHT 12/12 CAN	2.0	4	2	PREMIUM

Segment # 2 : 2_1 DEPTH: 12 in WIDTH: 144 in DISTANCE FROM TOP OF BASE SHELF TO BOTTOM OF SHELF:48.00 in

POS #	FAC	UPC	NAME	CASES	CAPACITY	UNITS HIGH	Category
1	2	63598554890	WHITE CLAW VARIETY PACK 12/12 CAN	1.0	2	2	ABOVE PREMIUM
2	2	3410051681	CAPE LINE VARIETY PACK 12/12 CAN	1.0	2	2	ABOVE PREMIUM
3	2	85389700227	BON AND VIV SPIKED SELTZER VARIETY 12/12 CAN	1.0	2	2	ABOVE PREMIUM
4	1	75452700022	NEW BELGIUM FAT TIRE 6/12 BTL	0.5	2	1	ABOVE PREMIUM
1	1	81760601020	CAPTAIN LAWRENCE IPA 6/12 BTL	0.5	2	1	ABOVE PREMIUM
2	1	81760601000	CAPTAIN LAWRENCE FRESHCHESTER 6/12 BTL	0.5	2	1	ABOVE PREMIUM
3	1	7199009532	BLUE MOON SEASONAL 6/12 BTL	0.5	2	1	ABOVE PREMIUM
4	1	78615000001	STELLA ARTOIS 6/11.2 BTL	0.5	2	1	ABOVE PREMIUM
5	1	7289000011	HEINEKEN 6/12 BTL	0.5	2	1	ABOVE PREMIUM
6	2	8066095605	CORONA 6/12 BTL	1.0	4	2	ABOVE PREMIUM
1	1	8066095625	CORONA LIGHT 6/12 BTL	0.5	2	1	ABOVE PREMIUM
2	2	8066095765	MODELO ESPECIAL 6/12 BTL	0.5	2	2	ABOVE PREMIUM
3	2	7231163012	DOS EQUIS 6/12 BTL	0.5	2	2	ABOVE PREMIUM



CVS # 1997 WARM

Address: 10 S BEDFORD RD | City: MOUNT KISCO | State: NY

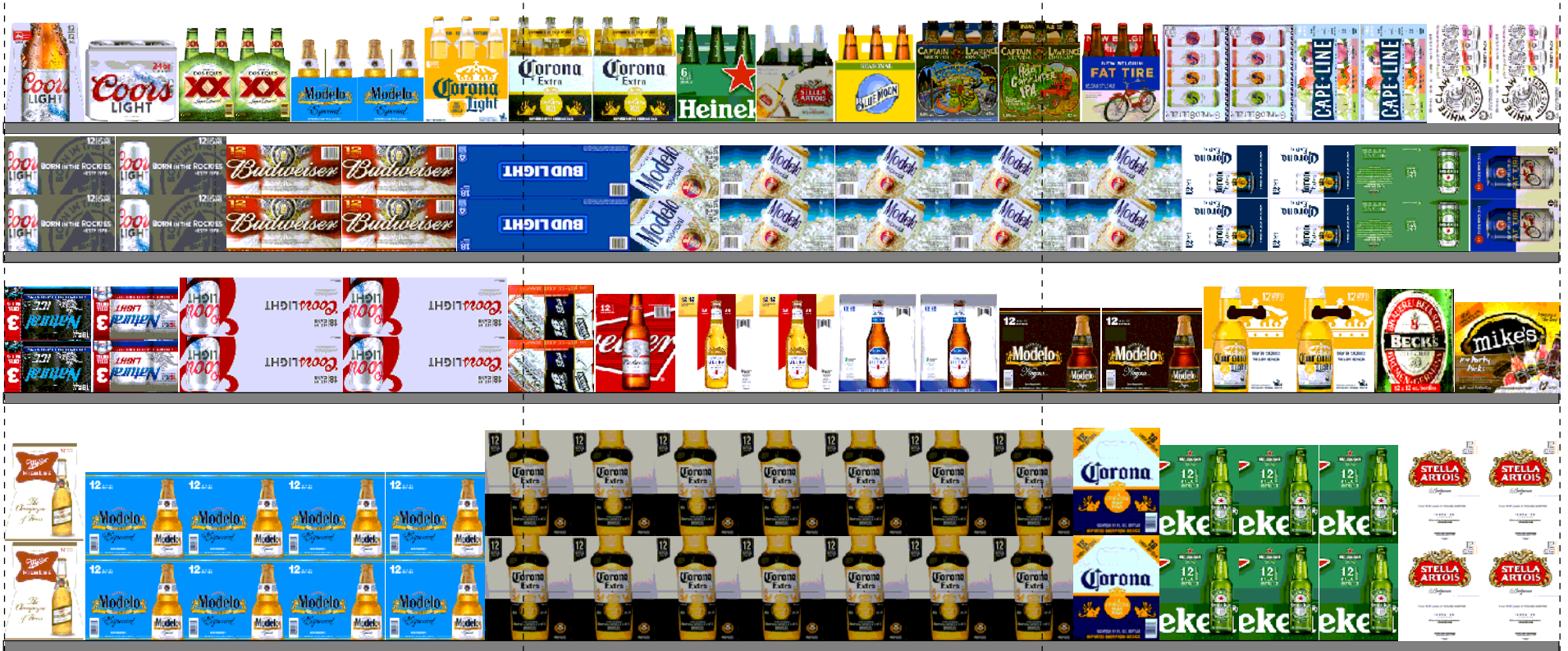
Chain/StoreNumer: CVS - EAST 1997

Reset Name: 2019 SPRING

Planogram Name: 1997_12ft_OPEN_WARM

4	1	7199030120	COORS LIGHT 3/24 CAN	1.0	4	1	PREMIUM
5	1	7199030069	COORS LIGHT 12/12 BTL	0.5	1	1	PREMIUM

REVERSE VIEW (ONLY IF NEEDED)





CVS # 1997 WARM

Reset Timing 2019 SPRING

Address: 10 S BEDFORD RD | City: MOUNT KISCO | State: NY

REVERSE VIEW (ONLY IF NEEDED)

Segment:
1 of 3



Segment # 2 : 2_4 0.00 In

POS	UPC	NAME
1	7861500014	STELLA ARTOIS 12/ 11.2 BTL
2	7289000016	HEINEKEN 12/ 12 BTL
3	8066095680	CORONA 18/ 12 BTL

Segment # 2 : 2_3 23.00 In

POS	UPC	NAME
1	63598512998	MIKES HARD VARIETY PACK 12/ 11.2 BTL
2	8248812300	BECKS 12/ 12 BTL
3	8066095675	CORONA LIGHT 12/ 12 BTL
4	8066095787	MODELO NEGRA 12/ 12 BTL

Segment # 2 : 2_2 36.00 In

POS	UPC	NAME
1	75452700161	NEW BELGIUM FAT TIRE 12/ 12 CAN
2	7289000020	HEINEKEN 12/ 12 CAN
3	8066095695	CORONA 12/ 12 CAN

Segment # 2 : 2_1 48.00 In

POS	UPC	NAME
1	63598554890	WHITE CLAW VARIETY PACK 12/ 12 CAN
2	3410051681	CAPE LINE VARIETY PACK 12/ 12 CAN
3	85389700227	BON AND VIV SPIKED SELTZER VARIETY 12/ 12 CAN
4	75452700022	NEW BELGIUM FAT TIRE 6/ 12 BTL



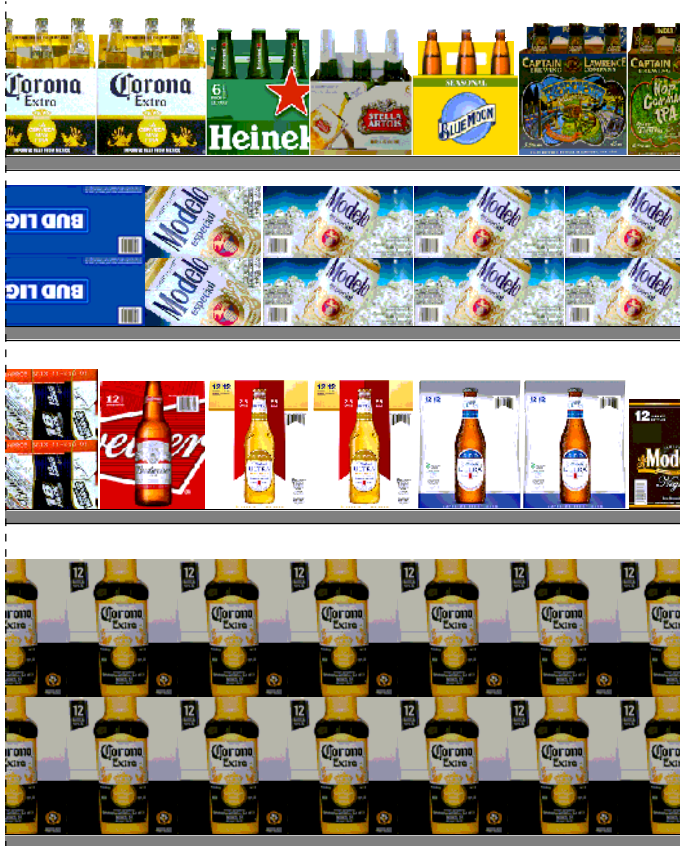
CVS # 1997 WARM

Reset Timing 2019 SPRING

Address: 10 S BEDFORD RD | City: MOUNT KISCO | State: NY

REVERSE VIEW (ONLY IF NEEDED)

Segment:
2 of 3



Segment # 2 : 2_4 0.00 In

POS	UPC	NAME
1	8066095615	CORONA 12/ 12 BTL

Segment # 2 : 2_3 23.00 In

POS	UPC	NAME
1	1820005990	MICHELOB ULTRA 12/ 12 BTL
2	1820020083	MICHELOB ULTRA PURE GOLD 12/ 12 BTL
3	1820000771	BUD 12/ 12 BTL
4	1820011218	BUD 18/ 12 CAN

Segment # 2 : 2_2 36.00 In

POS	UPC	NAME
1	8066095715	MODELO ESPECIAL 12/ 12 CAN
2	8066095715	MODELO ESPECIAL 12/ 12 CAN
3	1820053218	BUD LIGHT 18/ 12 CAN

Segment # 2 : 2_1 48.00 In

POS	UPC	NAME
1	81760601020	CAPTAIN LAWRENCE IPA 6/ 12 BTL
2	81760601000	CAPTAIN LAWRENCE FRESHCHESTER 6/ 12 BTL
3	7199009532	BLUE MOON SEASONAL 6/ 12 BTL
4	78615000001	STELLA ARTOIS 6/ 11.2 BTL
5	7289000011	HEINEKEN 6/ 12 BTL
6	8066095605	CORONA 6/ 12 BTL



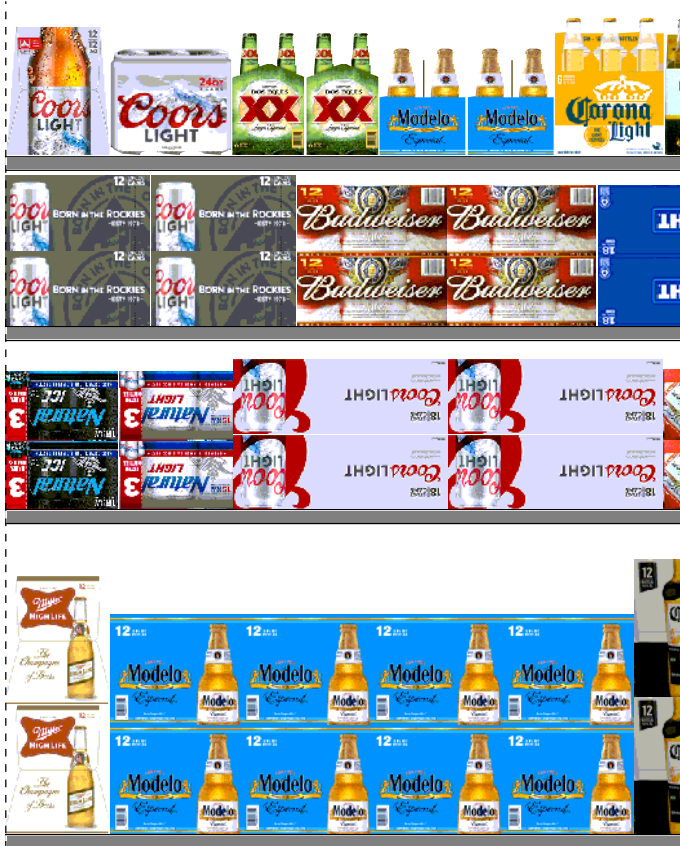
CVS # 1997 WARM

Reset Timing 2019 SPRING

Address: 10 S BEDFORD RD | City: MOUNT KISCO | State: NY

REVERSE VIEW (ONLY IF NEEDED)

Segment:
3 of 3



Segment # 2 : 2_4 0.00 In

POS	UPC	NAME
1	8066095757	MODELO ESPECIAL 12/ 12 BTL
2	8066095757	MODELO ESPECIAL 12/ 12 BTL
3	3410001509	HIGH LIFE 12/ 12 BTL

Segment # 2 : 2_3 23.00 In

POS	UPC	NAME
1	7199030017	COORS LIGHT 18/ 12 CAN
2	1820020077	NATURAL LIGHT 15/ 12 CAN
3	1820028443	NATURAL ICE 15/ 12 CAN

Segment # 2 : 2_2 36.00 In

POS	UPC	NAME
1	1820011047	BUD 12/ 12 CAN
2	7199000048	COORS LIGHT 12/ 12 CAN

Segment # 2 : 2_1 48.00 In

POS	UPC	NAME
1	8066095625	CORONA LIGHT 6/ 12 BTL
2	8066095765	MODELO ESPECIAL 6/ 12 BTL
3	7231163012	DOS EQUIS 6/ 12 BTL
4	7199030120	COORS LIGHT 3/ 24 CAN
5	7199030069	COORS LIGHT 12/ 12 BTL



CVS # 1997 WARM

Address: 10 S BEDFORD RD | City: MOUNT KISCO | State: NY

Chain/StoreNumer: CVS - EAST 1997

Reset Name: 2019 SPRING

Planogram Name: 1997_12ft_OPEN_WARM

CVS PHARMA... Store # 1997 H: 5 ft W: 12 ft D: 2 ft # of segments: 3

Name: 2_1 W:144.00 in D:12.00 in Avail Space: 0.57 in Ht Space: 11.00 in

ID	UPC	Barcode	Name	Category	HFacings	Orientation	Units
45151	63598554890	6 35985 54890 4	WHITE CLAW VARIETY PACK 1...	ABOVE PREMIUM	2	Front 90	2
86788	3410051681	0 34100 51681 9	CAPE LINE VARIETY PACK 12/1...	ABOVE PREMIUM	2	Front 90	2
19178	85389700227	8 53897 00227 1	BON AND VIV SPIKED SELTZE...	ABOVE PREMIUM	2	Front 90	2
13009	75452700022	7 54527 00022 6	NEW BELGIUM FAT TIRE 6/12 B...	ABOVE PREMIUM	1	Front	2
15961	81760601020	8 17606 01020 9	CAPTAIN LAWRENCE IPA 6/12 ...	ABOVE PREMIUM	1	Front	2
15955	81760601000	8 17606 01000 1	CAPTAIN LAWRENCE FRESHC...	ABOVE PREMIUM	1	Front	2
10190	7199009532	0 71990 09532 1	BLUE MOON SEASONAL 6/12 B...	ABOVE PREMIUM	1	Front	2
14089	78615000001	7 86150 00001 4	STELLA ARTOIS 6/11.2 BTL	ABOVE PREMIUM	1	Front	2
11298	7289000011	0 72890 00011 8	HEINEKEN 6/12 BTL	ABOVE PREMIUM	1	Front	2
15400	8066095605	0 80660 95605 3	CORONA 6/12 BTL	ABOVE PREMIUM	2	Front	4
15408	8066095625	0 80660 95625 1	CORONA LIGHT 6/12 BTL	ABOVE PREMIUM	1	Front	2
15442	8066095765	0 80660 95765 4	MODELO ESPECIAL 6/12 BTL	ABOVE PREMIUM	2	Side	2
10813	7231163012	0 72311 63012 2	DOS EQUIS 6/12 BTL	ABOVE PREMIUM	2	Side	2
10372	7199030120	0 71990 30120 0	COORS LIGHT 3/24 CAN	PREMIUM	1	Front	4
10348	7199030069	0 71990 30069 2	COORS LIGHT 12/12 BTL	PREMIUM	1	Side	1

Name: 2_2 W:144.00 in D:12.00 in Avail Space: 1.88 in Ht Space: 11.00 in

ID	UPC	Barcode	Name	Category	HFacings	Orientation	Units
----	-----	---------	------	----------	----------	-------------	-------



CVS # 1997 WARM

Address: 10 S BEDFORD RD | City: MOUNT KISCO | State: NY

Chain/StoreNumer: CVS - EAST 1997

Reset Name: 2019 SPRING

Planogram Name: 1997_12ft_OPEN_WARM

13037	75452700161	7		2	NEW BELGIUM FAT TIRE 12/12 ...	ABOVE PREMIUM	1	Side 90	2
11301	7289000020	0		0	HEINEKEN 12/12 CAN	ABOVE PREMIUM	1	Top	2
15426	8066095695	0		4	CORONA 12/12 CAN	ABOVE PREMIUM	2	Side 90	4
15429	8066095715	0		9	MODELO ESPECIAL 12/12 CAN	ABOVE PREMIUM	4	Top	8
15429	8066095715	0		9	MODELO ESPECIAL 12/12 CAN	ABOVE PREMIUM	1	Side 90	2
1667	1820053218	0		4	BUD LIGHT 18/12 CAN	PREMIUM	1	Top	2
1297	1820011047	0		4	BUD 12/12 CAN	PREMIUM	2	Top	4
10164	7199000048	0		6	COORS LIGHT 12/12 CAN	PREMIUM	2	Top	4

Name: 2_3 W:144.00 in D:12.00 in Avail Space: 2.53 in Ht Space: 12.00 in

ID	UPC	Barcode	Name	Category	HFacings	Orientation	Units		
6433	63598512998	6		1	MIKES HARD VARIETY PACK 1...	ABOVE PREMIUM	1	Front	1
16691	8248812300	0		6	BECKS 12/12 BTL	ABOVE PREMIUM	1	Side	1
15416	8066095675	0		6	CORONA LIGHT 12/12 BTL	ABOVE PREMIUM	2	Side	2
15449	8066095787	0		6	MODELO NEGRA 12/12 BTL	ABOVE PREMIUM	2	Side	2
1228	1820005990	0		2	MICHELOB ULTRA 12/12 BTL	ABOVE PREMIUM	2	Side	2
65828	1820020083	0		0	MICHELOB ULTRA PURE GOLD...	ABOVE PREMIUM	2	Side	2
1058	1820000771	0		2	BUD 12/12 BTL	PREMIUM	1	Side	1
1307	1820011218	0		8	BUD 18/12 CAN	PREMIUM	1	Side 90	2
10329	7199030017	0		3	COORS LIGHT 18/12 CAN	PREMIUM	2	Top	4



CVS # 1997 WARM

Address: 10 S BEDFORD RD | City: MOUNT KISCO | State: NY

Chain/StoreNumer: CVS - EAST 1997

Reset Name: 2019 SPRING

Planogram Name: 1997_12ft_OPEN_WARM

61975	1820020077		NATURAL LIGHT 15/12 CAN	ECONOMY	1	Side 90	2
66288	1820028443		NATURAL ICE 15/12 CAN	ECONOMY	1	Side 90	2

Name: 2_4 W:144.00 in D:12.00 in Avail Space: 0.45 in Ht Space: 22.00 in

ID	UPC	Barcode	Name	Category	HFacings	Orientation	Units
14094	7861500014		STELLA ARTOIS 12/11.2 BTL	ABOVE PREMIUM	2	Side	4
11300	7289000016		HEINEKEN 12/12 BTL	ABOVE PREMIUM	3	Side	6
15417	8066095680		CORONA 18/12 BTL	ABOVE PREMIUM	1	Side	2
15403	8066095615		CORONA 12/12 BTL	ABOVE PREMIUM	7	Side	14
15436	8066095757		MODELO ESPECIAL 12/12 BTL	ABOVE PREMIUM	2	Side	4
15436	8066095757		MODELO ESPECIAL 12/12 BTL	ABOVE PREMIUM	2	Side	4
3198	3410001509		HIGH LIFE 12/12 BTL	ECONOMY	1	Side	2