





CVS # 2432 COLD

Address: 375 WHITE PLAINS RD | City: EASTCHESTER | State: NY

Chain/StoreNumer: CVS - EAST 2432

Reset Name: 2019 SPRING

Planogram Name: 2432\_2\_DOOR\_COLD

Segment # 1 : 1\_4 DEPTH: 22 In WIDTH: 24 In DISTANCE FROM TOP OF BASE SHELF TO BOTTOM OF SHELF:0.00 In

POS #	FAC	UPC	NAME	CASES	CAPACITY	UNITS HIGH	Category
1	1	8066095615	CORONA 12/12 BTL	3.0	6	1	ABOVE PREMIUM
2	1	8066095675	CORONA LIGHT 12/12 BTL	2.0	4	1	ABOVE PREMIUM
3	1	8066095715	MODELO ESPECIAL 12/12 CAN	2.0	4	1	ABOVE PREMIUM

Segment # 1 : 1\_3 DEPTH: 22 In WIDTH: 24 In DISTANCE FROM TOP OF BASE SHELF TO BOTTOM OF SHELF:22.00 In

POS #	FAC	UPC	NAME	CASES	CAPACITY	UNITS HIGH	Category
1	1	8066095605	CORONA 6/12 BTL	0.5	2	1	ABOVE PREMIUM
2	1	3354495042	CORONA PREMIER 12/12 BTL	1.0	2	1	ABOVE PREMIUM
3	1	8066095757	MODELO ESPECIAL 12/12 BTL	0.5	1	1	ABOVE PREMIUM

Segment # 1 : 1\_2 DEPTH: 22 In WIDTH: 24 In DISTANCE FROM TOP OF BASE SHELF TO BOTTOM OF SHELF:35.00 In

POS #	FAC	UPC	NAME	CASES	CAPACITY	UNITS HIGH	Category
1	1	7289000159	HEINEKEN LIGHT 12/12 BTL	1.0	2	1	ABOVE PREMIUM
2	1	7289000016	HEINEKEN 12/12 BTL	1.0	2	1	ABOVE PREMIUM
3	1	7861500014	STELLA ARTOIS 12/11.2 BTL	1.0	2	1	ABOVE PREMIUM

Segment # 1 : 1\_1 DEPTH: 22 In WIDTH: 24 In DISTANCE FROM TOP OF BASE SHELF TO BOTTOM OF SHELF:48.00 In

POS #	FAC	UPC	NAME	CASES	CAPACITY	UNITS HIGH	Category
1	1	7861500001	STELLA ARTOIS 6/11.2 BTL	0.8	3	1	ABOVE PREMIUM
2	1	7199009511	BLUE MOON BELGIAN WHITE 6/12 BTL	0.5	2	1	ABOVE PREMIUM
3	1	8066095625	CORONA LIGHT 6/12 BTL	0.5	2	1	ABOVE PREMIUM
4	1	3354400013	CORONA REFRESCA VARIETY 12/12 CAN	1.5	3	1	ABOVE PREMIUM

Segment # 2 : 2\_4 DEPTH: 22 In WIDTH: 24 In DISTANCE FROM TOP OF BASE SHELF TO BOTTOM OF SHELF:0.00 In

POS #	FAC	UPC	NAME	CASES	CAPACITY	UNITS HIGH	Category
1	1	1820053218	BUD LIGHT 18/12 CAN	3.0	3	1	PREMIUM
2	1	1820011218	BUD 18/12 CAN	3.0	3	1	PREMIUM
3	1	7199030017	COORS LIGHT 18/12 CAN	3.0	3	1	PREMIUM
4	1	3410057340	LITE 18/12 CAN	3.0	3	1	PREMIUM

Segment # 2 : 2\_3 DEPTH: 22 In WIDTH: 24 In DISTANCE FROM TOP OF BASE SHELF TO BOTTOM OF SHELF:22.00 In

POS #	FAC	UPC	NAME	CASES	CAPACITY	UNITS HIGH	Category
1	1	1820053047	BUD LIGHT 12/12 CAN	1.0	2	1	PREMIUM
2	1	1820011047	BUD 12/12 CAN	1.0	2	1	PREMIUM
3	1	7199030069	COORS LIGHT 12/12 BTL	1.0	2	1	PREMIUM
4	1	3410057636	LITE 12/12 CAN	1.0	2	1	PREMIUM

Segment # 2 : 2\_2 DEPTH: 22 In WIDTH: 24 In DISTANCE FROM TOP OF BASE SHELF TO BOTTOM OF SHELF:35.00 In

POS #	FAC	UPC	NAME	CASES	CAPACITY	UNITS HIGH	Category
1	1	3410051681	CAPE LINE VARIETY PACK 12/12 CAN	1.5	3	1	ABOVE PREMIUM
2	1	63598554890	WHITE CLAW VARIETY PACK 12/12 CAN	1.5	3	1	ABOVE PREMIUM
3	1	85389700227	BON AND VIV SPIKED SELTZER VARIETY 12/12 CAN	1.5	3	1	ABOVE PREMIUM



CVS # 2432 COLD

Address: 375 WHITE PLAINS RD | City: EASTCHESTER | State: NY

Chain/StoreNumber: CVS - EAST 2432

Reset Name: 2019 SPRING

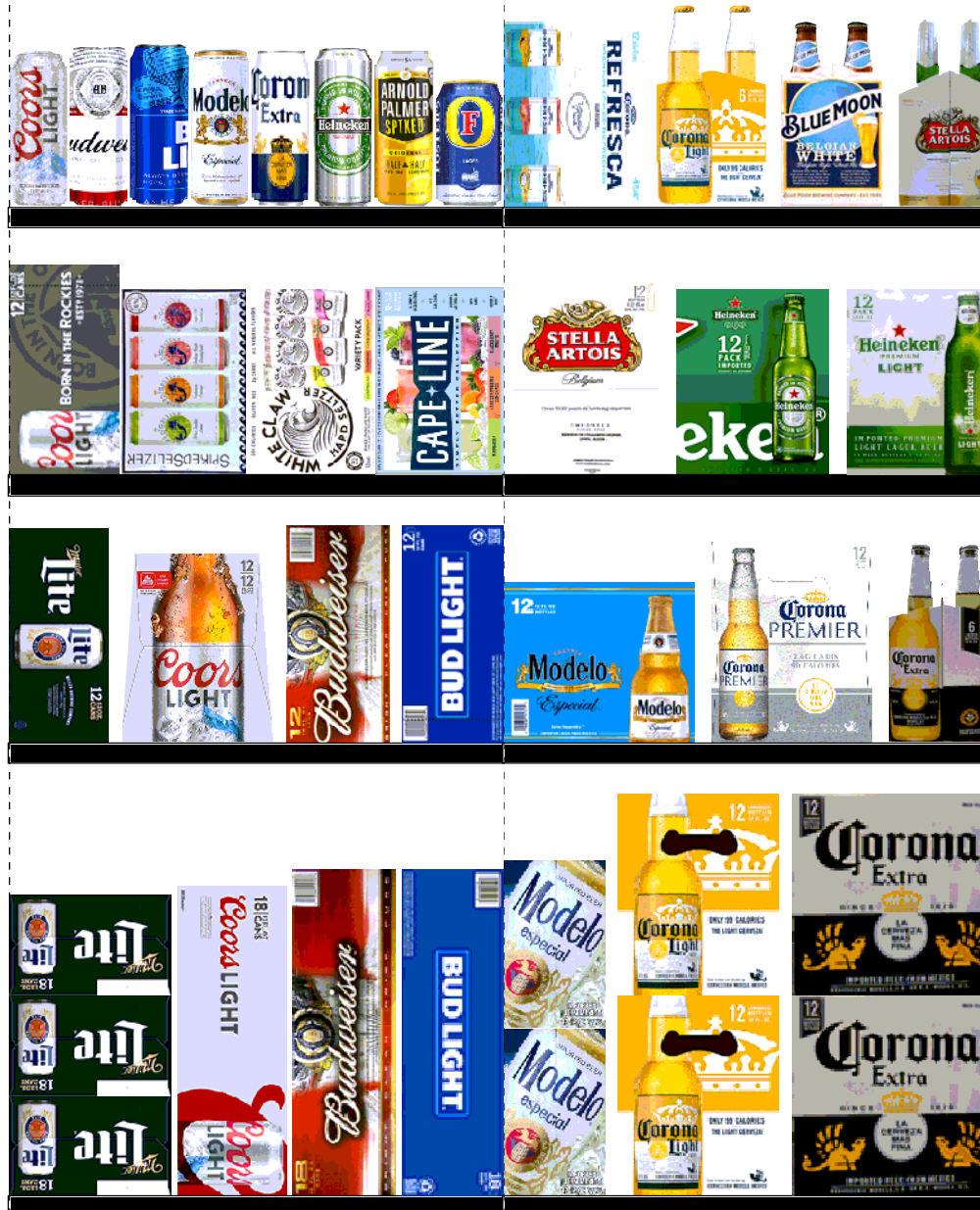
Planogram Name: 2432\_2\_DOOR\_COLD

4 1 7199000048 COORS LIGHT 12/12 CAN 1.0 2 1 PREMIUM

Segment # 2 : 2\_1 DEPTH: 22 In WIDTH: 24 In DISTANCE FROM TOP OF BASE SHELF TO BOTTOM OF SHELF:48.00 In

POS	#	FAC	UPC	NAME	CASES	CAPACITY	UNITS HIGH	Category
1	1		7089701331	FOSTERS 1/25.4 CAN	0.5	6	1	ABOVE PREMIUM
2	1		61300874829	ARNOLD PALMER SPIKED HALF AND HALF 1/24 CAN	0.6	7	1	ABOVE PREMIUM
3	1		7289000119	HEINEKEN 1/24 CAN	0.6	7	1	ABOVE PREMIUM
4	1		8066095643	CORONA 1/24 CAN	0.6	7	1	ABOVE PREMIUM
5	1		8066095721	MODELO ESPECIAL 1/24 CAN	0.6	7	1	ABOVE PREMIUM
6	1		1820025001	BUD LIGHT 1/25 CAN	0.5	7	1	PREMIUM
7	1		1820025000	BUD 1/25 CAN	0.5	7	1	PREMIUM
8	1		7199030065	COORS LIGHT 1/24 CAN	0.6	7	1	PREMIUM

# REVERSE VIEW (ONLY IF NEEDED)





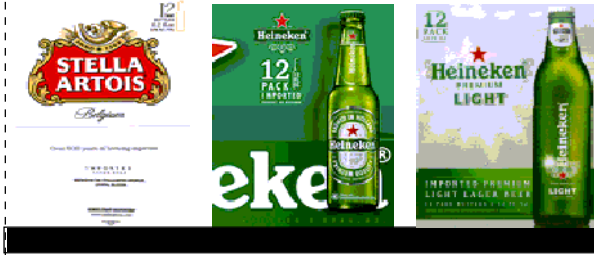
CVS # 2432 COLD

Reset Timing 2019 SPRING

Address: 375 WHITE PLAINS RD | City: EASTCHESTER | State: NY

**REVERSE VIEW (ONLY IF NEEDED)**

Segment:  
1 of 2



**Segment # 1 : 1\_4 0.00 In**

POS	UPC	NAME
1	8066095615	CORONA 12/ 12 BTL
2	8066095675	CORONA LIGHT 12/ 12 BTL
3	8066095715	MODELO ESPECIAL 12/ 12 CAN

**Segment # 1 : 1\_3 22.00 In**

POS	UPC	NAME
1	8066095605	CORONA 6/ 12 BTL
2	3354495042	CORONA PREMIER 12/ 12 BTL
3	8066095757	MODELO ESPECIAL 12/ 12 BTL

**Segment # 1 : 1\_2 35.00 In**

POS	UPC	NAME
1	7289000159	HEINEKEN LIGHT 12/ 12 BTL
2	7289000016	HEINEKEN 12/ 12 BTL
3	78615000014	STELLA ARTOIS 12/ 11.2 BTL

**Segment # 1 : 1\_1 48.00 In**

POS	UPC	NAME
1	78615000001	STELLA ARTOIS 6/ 11.2 BTL
2	7199009511	BLUE MOON BELGIAN WHITE 6/ 12 BTL
3	8066095625	CORONA LIGHT 6/ 12 BTL
4	3354400013	CORONA REFRESCA VARIETY 12/ 12 CAN



CVS # 2432 COLD

Reset Timing 2019 SPRING

Address: 375 WHITE PLAINS RD | City: EASTCHESTER | State: NY

**REVERSE VIEW (ONLY IF NEEDED)**

Segment:  
2 of 2



**Segment # 2 : 2\_4 0.00 In**

POS	UPC	NAME
1	1820053218	BUD LIGHT 18/ 12 CAN
2	1820011218	BUD 18/ 12 CAN
3	7199030017	COORS LIGHT 18/ 12 CAN
4	3410057340	LITE 18/ 12 CAN

**Segment # 2 : 2\_3 22.00 In**

POS	UPC	NAME
1	1820053047	BUD LIGHT 12/ 12 CAN
2	1820011047	BUD 12/ 12 CAN
3	7199030069	COORS LIGHT 12/ 12 BTL
4	3410057636	LITE 12/ 12 CAN

**Segment # 2 : 2\_2 35.00 In**

POS	UPC	NAME
1	3410051681	CAPE LINE VARIETY PACK 12/ 12 CAN
2	63598554890	WHITE CLAW VARIETY PACK 12/ 12 CAN
3	85389700227	BON AND VIV SPIKED SELTZER VARIETY 12/ 12 CAN
4	7199000048	COORS LIGHT 12/ 12 CAN

**Segment # 2 : 2\_1 48.00 In**

POS	UPC	NAME
1	7089701331	FOSTERS 1/ 25.4 CAN
2	61300874829	ARNOLD PALMER SPIKED HALF AND HALF 1/ 24 CAN
3	7289000119	HEINEKEN 1/ 24 CAN
4	8066095643	CORONA 1/ 24 CAN
5	8066095721	MODELO ESPECIAL 1/ 24 CAN
6	1820025001	BUD LIGHT 1/ 25 CAN
7	1820025000	BUD 1/ 25 CAN
8	7199030065	COORS LIGHT 1/ 24 CAN



CVS # 2432 COLD

Address: 375 WHITE PLAINS RD | City: EASTCHESTER | State: NY

Chain/StoreNumer: CVS - EAST 2432

Reset Name: 2019 SPRING

Planogram Name: 2432\_2\_DOOR\_COLD

CVS PHARMA... Store # 2432 H: 5 ft W: 4 ft D: 1 ft 10.00 in # of segments: 2

Name: 1\_1 W:24.00 in D:22.00 in Avail Space: 2.10 in Ht Space: 11.00 in

ID	UPC	Barcode	Name	Category	HFacings	Orientation	Units
14089	78615000001	7 86150 00001 4	STELLA ARTOIS 6/11.2 BTL	ABOVE PREMIUM	1	Side	3
10180	7199009511	0 71990 09511 6	BLUE MOON BELGIAN WHITE 6...	ABOVE PREMIUM	1	Side	2
15408	8066095625	0 80660 95625 1	CORONA LIGHT 6/12 BTL	ABOVE PREMIUM	1	Side	2
86777	3354400013	0 33544 00013 7	CORONA REFRESCA VARIETY...	ABOVE PREMIUM	1	Top 90	3

Name: 1\_2 W:24.00 in D:22.00 in Avail Space: 1.87 in Ht Space: 12.00 in

ID	UPC	Barcode	Name	Category	HFacings	Orientation	Units
11342	7289000159	0 72890 00159 7	HEINEKEN LIGHT 12/12 BTL	ABOVE PREMIUM	1	Side	2
11300	7289000016	0 72890 00016 3	HEINEKEN 12/12 BTL	ABOVE PREMIUM	1	Side	2
14094	78615000014	7 86150 00014 4	STELLA ARTOIS 12/11.2 BTL	ABOVE PREMIUM	1	Side	2

Name: 1\_3 W:24.00 in D:22.00 in Avail Space: 1.69 in Ht Space: 12.00 in

ID	UPC	Barcode	Name	Category	HFacings	Orientation	Units
15400	8066095605	0 80660 95605 3	CORONA 6/12 BTL	ABOVE PREMIUM	1	Side	2
44952	3354495042	0 33544 95042 5	CORONA PREMIER 12/12 BTL	ABOVE PREMIUM	1	Side	2
15436	8066095757	0 80660 95757 9	MODELO ESPECIAL 12/12 BTL	ABOVE PREMIUM	1	Side	1

Name: 1\_4 W:24.00 in D:22.00 in Avail Space: 1.31 in Ht Space: 21.00 in

ID	UPC	Barcode	Name	Category	HFacings	Orientation	Units
15403	8066095615	0 80660 95615 2	CORONA 12/12 BTL	ABOVE PREMIUM	1	Front	6
15416	8066095675	0 80660 95675 6	CORONA LIGHT 12/12 BTL	ABOVE PREMIUM	1	Side	4
15429	8066095715	0 80660 95715 9	MODELO ESPECIAL 12/12 CAN	ABOVE PREMIUM	1	Side	4

Name: 2\_1 W:24.00 in D:22.00 in Avail Space: 0.54 in Ht Space: 11.00 in

ID	UPC	Barcode	Name	Category	HFacings	Orientation	Units
----	-----	---------	------	----------	----------	-------------	-------



CVS # 2432 COLD

Address: 375 WHITE PLAINS RD | City: EASTCHESTER | State: NY

Chain/StoreNumer: CVS - EAST 2432

Reset Name: 2019 SPRING

Planogram Name: 2432\_2\_DOOR\_COLD

9452	7089701331		FOSTERS 1/25.4 CAN	ABOVE PREMIUM	1	Front	6
66064	61300874829		ARNOLD PALMER SPIKED HAL...	ABOVE PREMIUM	1	Side	7
11327	7289000119		HEINEKEN 1/24 CAN	ABOVE PREMIUM	1	Front	7
15415	8066095643		CORONA 1/24 CAN	ABOVE PREMIUM	1	Front	7
15431	8066095721		MODELO ESPECIAL 1/24 CAN	ABOVE PREMIUM	1	Front	7
1521	1820025001		BUD LIGHT 1/25 CAN	PREMIUM	1	Front	7
1520	1820025000		BUD 1/25 CAN	PREMIUM	1	Front	7
10346	7199030065		COORS LIGHT 1/24 CAN	PREMIUM	1	Front	7

Name: 2\_2 W:24.00 in D:22.00 in Avail Space: 0.27 in Ht Space: 12.00 in

ID	UPC	Barcode	Name	Category	HFacings	Orientation	Units
86788	3410051681		CAPE LINE VARIETY PACK 12/1...	ABOVE PREMIUM	1	Front 90	3
45151	63598554890		WHITE CLAW VARIETY PACK 1...	ABOVE PREMIUM	1	Front 90	3
19178	85389700227		BON AND VIV SPIKED SELTZE...	ABOVE PREMIUM	1	Front 90	3
10164	7199000048		COORS LIGHT 12/12 CAN	PREMIUM	1	Top 90	2

Name: 2\_3 W:24.00 in D:22.00 in Avail Space: 1.84 in Ht Space: 12.00 in

ID	UPC	Barcode	Name	Category	HFacings	Orientation	Units
1659	1820053047		BUD LIGHT 12/12 CAN	PREMIUM	1	Top 90	2
1297	1820011047		BUD 12/12 CAN	PREMIUM	1	Top 90	2
10348	7199030069		COORS LIGHT 12/12 BTL	PREMIUM	1	Side	2
3579	3410057636		LITE 12/12 CAN	PREMIUM	1	Top 90	2









CVS # 2432 COLD

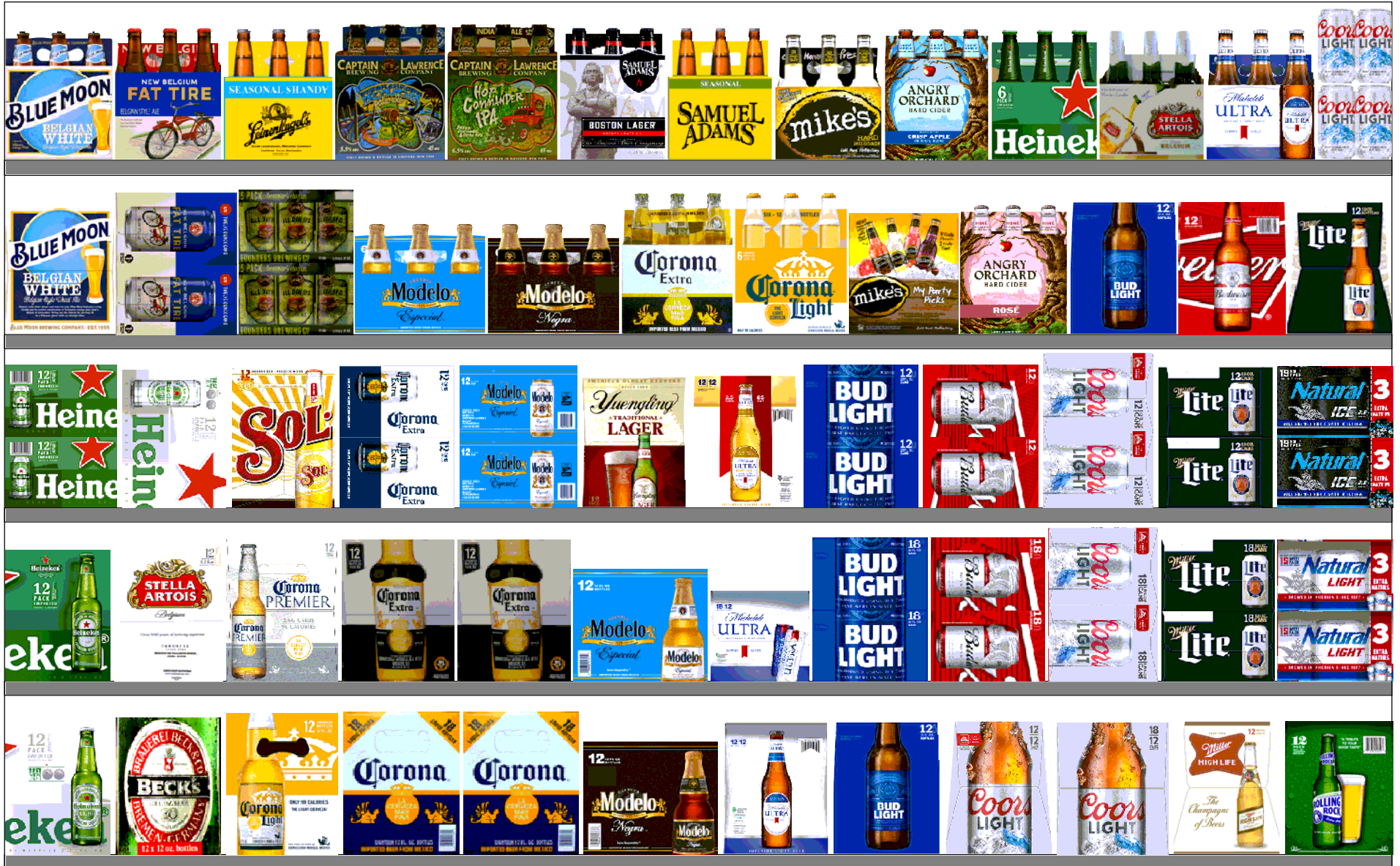
Address: 375 WHITE PLAINS RD | City: EASTCHESTER | State: NY

Chain/StoreNumer: CVS - EAST 2432

Reset Name: 2019 SPRING

Planogram Name: 2432\_2\_DOOR\_COLD

Name: 2_4		W:24.00 in	D:22.00 in	Avail Space: 0.95 in	Ht Space: 21.00 in			
ID	UPC	Barcode	Name	Category	HFacings	Orientation	Units	
1667	1820053218	 18200 53218 4	BUD LIGHT 18/12 CAN	PREMIUM	1	Top 90	3	
1307	1820011218	 18200 11218 8	BUD 18/12 CAN	PREMIUM	1	Top 90	3	
10329	7199030017	 71990 30017 3	COORS LIGHT 18/12 CAN	PREMIUM	1	Top 90	3	
3552	3410057340	 34100 57340 9	LITE 18/12 CAN	PREMIUM	1	Side 90	3	





CVS # 2432 WARM

Address: 375 WHITE PLAINS RD | City: EASTCHESTER | State: NY

Chain/StoreNumer: CVS - EAST 2432

Reset Name: 2019 SPRING

Planogram Name: 2432\_8ft\_OPEN\_WARM

Segment # 1 : 1\_5 DEPTH: 24 in WIDTH: 96 in DISTANCE FROM TOP OF BASE SHELF TO BOTTOM OF SHELF:0.00 in

POS #	FAC	UPC	NAME	CASES	CAPACITY	UNITS HIGH	Category
1	1	7289000159	HEINEKEN LIGHT 12/12 BTL	1.0	2	1	ABOVE PREMIUM
2	1	8248812300	BECKS 12/12 BTL	1.0	2	1	ABOVE PREMIUM
3	1	8066095675	CORONA LIGHT 12/12 BTL	1.0	2	1	ABOVE PREMIUM
4	2	8066095680	CORONA 18/12 BTL	2.0	2	2	ABOVE PREMIUM
5	1	8066095787	MODELO NEGRA 12/12 BTL	1.0	2	1	ABOVE PREMIUM
6	1	1820005990	MICHELOB ULTRA 12/12 BTL	1.0	2	1	ABOVE PREMIUM
7	1	1820000769	BUD LIGHT 12/12 BTL	1.0	2	1	PREMIUM
8	1	7199030069	COORS LIGHT 12/12 BTL	1.0	2	1	PREMIUM
9	1	7199030078	COORS LIGHT 18/12 BTL	1.0	1	1	PREMIUM
10	1	3410001509	HIGH LIFE 12/12 BTL	1.0	2	1	ECONOMY
11	1	7143945712	ROLLING ROCK 12/12 BTL	1.0	2	1	ECONOMY

Segment # 1 : 1\_4 DEPTH: 24 in WIDTH: 96 in DISTANCE FROM TOP OF BASE SHELF TO BOTTOM OF SHELF:12.00 in

POS #	FAC	UPC	NAME	CASES	CAPACITY	UNITS HIGH	Category
1	1	7289000016	HEINEKEN 12/12 BTL	1.0	2	1	ABOVE PREMIUM
2	1	78615000014	STELLA ARTOIS 12/11.2 BTL	1.0	2	1	ABOVE PREMIUM
3	1	3354495042	CORONA PREMIER 12/12 BTL	1.0	2	1	ABOVE PREMIUM
4	2	8066095615	CORONA 12/12 BTL	2.0	4	2	ABOVE PREMIUM
5	1	8066095757	MODELO ESPECIAL 12/12 BTL	1.0	2	1	ABOVE PREMIUM
6	1	1820096721	MICHELOB ULTRA 18/12 CAN	1.0	1	1	ABOVE PREMIUM
7	1	1820053218	BUD LIGHT 18/12 CAN	2.0	2	1	PREMIUM
8	1	1820011218	BUD 18/12 CAN	2.0	2	1	PREMIUM
9	1	7199030017	COORS LIGHT 18/12 CAN	2.0	2	1	PREMIUM
10	1	3410057340	LITE 18/12 CAN	2.0	2	1	PREMIUM
11	1	1820020077	NATURAL LIGHT 15/12 CAN	1.0	2	1	ECONOMY

Segment # 1 : 1\_3 DEPTH: 24 in WIDTH: 96 in DISTANCE FROM TOP OF BASE SHELF TO BOTTOM OF SHELF:24.00 in

POS #	FAC	UPC	NAME	CASES	CAPACITY	UNITS HIGH	Category
1	1	7289000020	HEINEKEN 12/12 CAN	2.0	4	1	ABOVE PREMIUM
2	1	7289000188	HEINEKEN LIGHT 12/12 CAN	2.0	4	1	ABOVE PREMIUM
3	1	7231123021	SOL 12/12 BTL	1.0	2	1	ABOVE PREMIUM
4	1	8066095695	CORONA 12/12 CAN	2.0	4	1	ABOVE PREMIUM
5	1	8066095715	MODELO ESPECIAL 12/12 CAN	2.0	4	1	ABOVE PREMIUM
6	1	8992427896	YUENGLING LAGER 12/12 BTL	1.0	2	1	PREMIUM
7	1	1820020083	MICHELOB ULTRA PURE GOLD 12/12 BTL	1.0	2	1	ABOVE PREMIUM
8	1	1820053047	BUD LIGHT 12/12 CAN	2.0	4	1	PREMIUM
9	1	1820011047	BUD 12/12 CAN	2.0	4	1	PREMIUM
10	1	7199000048	COORS LIGHT 12/12 CAN	2.0	4	1	PREMIUM
11	1	3410057636	LITE 12/12 CAN	2.0	4	1	PREMIUM
12	1	1820028443	NATURAL ICE 15/12 CAN	1.0	2	1	ECONOMY

Segment # 1 : 1\_2 DEPTH: 24 in WIDTH: 96 in DISTANCE FROM TOP OF BASE SHELF TO BOTTOM OF SHELF:36.00 in

POS #	FAC	UPC	NAME	CASES	CAPACITY	UNITS HIGH	Category
1	1	7199009516	BLUE MOON BELGIAN WHITE 12/12 BTL	1.0	2	1	ABOVE PREMIUM
2	1	75452700161	NEW BELGIUM FAT TIRE 12/12 CAN	2.0	4	1	ABOVE PREMIUM
3	1	64286090024	FOUNDERS ALL DAY SESSION IPA 15/12 CAN	1.0	2	1	ABOVE PREMIUM
4	1	8066095765	MODELO ESPECIAL 6/12 BTL	0.8	3	1	ABOVE PREMIUM
5	1	8066095785	MODELO NEGRA 6/12 BTL	0.8	3	1	ABOVE PREMIUM



CVS # 2432 WARM

Address: 375 WHITE PLAINS RD | City: EASTCHESTER | State: NY

Chain/StoreNumer: CVS - EAST 2432

Reset Name: 2019 SPRING

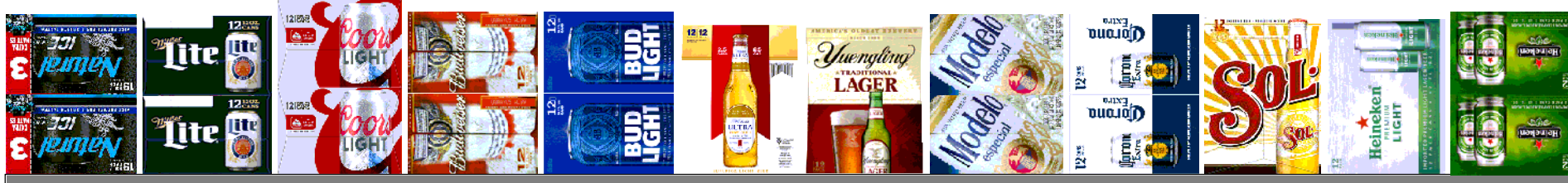
Planogram Name: 2432\_8ft\_OPEN\_WARM

6	1	8066095605	CORONA 6/12 BTL	1.0	4	1	ABOVE PREMIUM
7	1	8066095625	CORONA LIGHT 6/12 BTL	1.0	4	1	ABOVE PREMIUM
8	1	63598512998	MIKES HARD VARIETY PACK 12/11.2 BTL	1.0	2	1	ABOVE PREMIUM
9	1	8769200660	ANGRY ORCHARD ROSE 6/12 BTL	1.0	4	1	ABOVE PREMIUM
10	1	1820000769	BUD LIGHT 12/12 BTL	1.0	2	1	PREMIUM
11	1	1820000771	BUD 12/12 BTL	1.0	2	1	PREMIUM
12	1	3410057509	LITE 12/12 BTL	1.0	2	1	PREMIUM

Segment # 1 : 1\_1 DEPTH: 24 in WIDTH: 96 in DISTANCE FROM TOP OF BASE SHELF TO BOTTOM OF SHELF:48.00 in

POS #	FAC	UPC	NAME	CASES	CAPACITY	UNITS HIGH	Category
1	1	7199009511	BLUE MOON BELGIAN WHITE 6/12 BTL	1.0	4	1	ABOVE PREMIUM
2	1	75452700022	NEW BELGIUM FAT TIRE 6/12 BTL	1.0	4	1	ABOVE PREMIUM
3	1	3410051605	LEINIES SEASONAL SHANDY 6/12 BTL	1.0	4	1	ABOVE PREMIUM
4	1	81760601000	CAPTAIN LAWRENCE FRESHCHESTER 6/12 BTL	1.0	4	1	ABOVE PREMIUM
5	1	81760601020	CAPTAIN LAWRENCE IPA 6/12 BTL	1.0	4	1	ABOVE PREMIUM
6	1	8769210012	SAMUEL ADAMS BOSTON LAGER 6/12 BTL	1.0	4	1	ABOVE PREMIUM
7	1	8769230050	SAMUEL ADAMS SEASONAL 6/12 BTL (A)	1.0	4	1	ABOVE PREMIUM
8	1	63598510062	MIKES HARD LEMONADE 6/11.2 BTL	1.0	4	1	ABOVE PREMIUM
9	1	8769282102	ANGRY ORCHARD CRISP APPLE 6/12 BTL	1.0	4	1	ABOVE PREMIUM
10	1	7289000011	HEINEKEN 6/12 BTL	1.0	4	1	ABOVE PREMIUM
11	1	78615000001	STELLA ARTOIS 6/11.2 BTL	1.0	4	1	ABOVE PREMIUM
12	1	1820005989	MICHELOB ULTRA 6/12 BTL	1.0	4	1	ABOVE PREMIUM
13	1	7199000008	COORS LIGHT 6/12 CAN	1.5	6	1	PREMIUM

# REVERSE VIEW (ONLY IF NEEDED)





CVS # 2432 WARM

Reset Timing 2019 SPRING

Address: 375 WHITE PLAINS RD | City: EASTCHESTER | State: NY

**REVERSE VIEW (ONLY IF NEEDED)**

Segment:  
1 of 1



**Segment # 1 : 1\_5 0.00 In**

POS	UPC	NAME
1	7289000159	HEINEKEN LIGHT 12/ 12 BTL
2	8248812300	BECKS 12/ 12 BTL
3	8066095675	CORONA LIGHT 12/ 12 BTL
4	8066095680	CORONA 18/ 12 BTL
5	8066095787	MODELO NEGRA 12/ 12 BTL
6	1820005990	MICHELOB ULTRA 12/ 12 BTL
7	1820000769	BUD LIGHT 12/12 BTL
8	7199030069	COORS LIGHT 12/ 12 BTL
9	7199030078	COORS LIGHT 18/ 12 BTL
10	3410001509	HIGH LIFE 12/ 12 BTL
11	7143945712	ROLLING ROCK 12/ 12 BTL

**Segment # 1 : 1\_4 12.00 In**

POS	UPC	NAME
1	7289000016	HEINEKEN 12/ 12 BTL
2	78615000014	STELLA ARTOIS 12/ 11.2 BTL
3	3354495042	CORONA PREMIER 12/ 12 BTL
4	8066095615	CORONA 12/ 12 BTL
5	8066095757	MODELO ESPECIAL 12/ 12 BTL
6	1820096721	MICHELOB ULTRA 18/ 12 CAN
7	1820053218	BUD LIGHT 18/ 12 CAN
8	1820011218	BUD 18/ 12 CAN
9	7199030017	COORS LIGHT 18/ 12 CAN
10	3410057340	LITE 18/ 12 CAN
11	1820020077	NATURAL LIGHT 15/ 12 CAN

**Segment # 1 : 1\_3 24.00 In**

POS	UPC	NAME
1	7289000020	HEINEKEN 12/ 12 CAN
2	7289000188	HEINEKEN LIGHT 12/ 12 CAN
3	7231123021	SOL 12/ 12 BTL
4	8066095695	CORONA 12/ 12 CAN
5	8066095715	MODELO ESPECIAL 12/ 12 CAN
6	8992427896	YUENGLING LAGER 12/ 12 BTL
7	1820020083	MICHELOB ULTRA PURE GOLD 12/ 12 BTL
8	1820053047	BUD LIGHT 12/ 12 CAN
9	1820011047	BUD 12/ 12 CAN
10	7199000048	COORS LIGHT 12/ 12 CAN
11	3410057636	LITE 12/ 12 CAN
12	1820028443	NATURAL ICE 15/ 12 CAN

**Segment # 1 : 1\_2 36.00 In**

POS	UPC	NAME
1	7199009516	BLUE MOON BELGIAN WHITE 12/ 12 BTL
2	75452700161	NEW BELGIUM FAT TIRE 12/ 12 CAN
3	64286090024	FOUNDERS ALL DAY SESSION IPA 15/ 12 CAN
4	8066095765	MODELO ESPECIAL 6/ 12 BTL
5	8066095785	MODELO NEGRA 6/ 12 BTL
6	8066095605	CORONA 6/ 12 BTL
7	8066095625	CORONA LIGHT 6/ 12 BTL
8	63598512998	MIKES HARD VARIETY PACK 12/ 11.2 BTL
9	8769200660	ANGRY ORCHARD ROSE 6/ 12 BTL
10	1820000769	BUD LIGHT 12/ 12 BTL
11	1820000771	BUD 12/ 12 BTL
12	3410057509	LITE 12/ 12 BTL

**Segment # 1 : 1\_1 48.00 In**



CVS # 2432 WARM

Reset Timing 2019 SPRING

Address: 375 WHITE PLAINS RD | City: EASTCHESTER | State: NY

**REVERSE VIEW (ONLY IF NEEDED)**

Segment:  
1 of 1

Segment # 1 : 1\_5 0.00 In

POS	UPC	NAME
1	7199009511	BLUE MOON BELGIAN WHITE 6/ 12 BTL
2	7545270022	NEW BELGIUM FAT TIRE 6/ 12 BTL
3	3410051605	LEINIES SEASONAL SHANDY 6/ 12 BTL
4	81760601000	CAPTAIN LAWRENCE FRESHCHESTER 6/ 12 BTL
5	81760601020	CAPTAIN LAWRENCE IPA 6/ 12 BTL
6	8769210012	SAMUEL ADAMS BOSTON LAGER 6/ 12 BTL
7	8769230050	SAMUEL ADAMS SEASONAL 6/ 12 BTL (A)
8	63598510062	MIKES HARD LEMONADE 6/ 11.2 BTL
9	8769282102	ANGRY ORCHARD CRISP APPLE 6/ 12 BTL
10	7289000011	HEINEKEN 6/ 12 BTL
11	7861500001	STELLA ARTOIS 6/ 11.2 BTL
12	1820005989	MICHELOB ULTRA 6/ 12 BTL
13	7199000008	COORS LIGHT 6/ 12 CAN





CVS # 2432 WARM

Address: 375 WHITE PLAINS RD | City: EASTCHESTER | State: NY

Chain/StoreNumer: CVS - EAST 2432

Reset Name: 2019 SPRING

Planogram Name: 2432\_8ft\_OPEN\_WARM

CVS PHARMA... Store # 2432 H: 5 ft W: 8 ft D: 2 ft # of segments: 1

Name: 1\_1 W:96.00 in D:24.00 in Avail Space: 1.64 in Ht Space: 11.00 in

ID	UPC	Barcode	Name	Category	HFacings	Orientation	Units
10180	7199009511		BLUE MOON BELGIAN WHITE 6...	ABOVE PREMIUM	1	Front	4
13009	75452700022		NEW BELGIUM FAT TIRE 6/12 B...	ABOVE PREMIUM	1	Front	4
3492	3410051605		LEINIES SEASONAL SHANDY 6...	ABOVE PREMIUM	1	Front	4
15955	81760601000		CAPTAIN LAWRENCE FRESHC...	ABOVE PREMIUM	1	Front	4
15961	81760601020		CAPTAIN LAWRENCE IPA 6/12 ...	ABOVE PREMIUM	1	Front	4
21956	8769210012		SAMUEL ADAMS BOSTON LAG...	ABOVE PREMIUM	1	Front	4
21995	8769230050		SAMUEL ADAMS SEASONAL 6/...	ABOVE PREMIUM	1	Front	4
6413	63598510062		MIKES HARD LEMONADE 6/11....	ABOVE PREMIUM	1	Front	4
22090	8769282102		ANGRY ORCHARD CRISP APP...	ABOVE PREMIUM	1	Front	4
11298	7289000011		HEINEKEN 6/12 BTL	ABOVE PREMIUM	1	Front	4
14089	78615000001		STELLA ARTOIS 6/11.2 BTL	ABOVE PREMIUM	1	Front	4
1227	1820005989		MICHELOB ULTRA 6/12 BTL	ABOVE PREMIUM	1	Front	4
10155	7199000008		COORS LIGHT 6/12 CAN	PREMIUM	1	Side	6

Name: 1\_2 W:96.00 in D:24.00 in Avail Space: 1.46 in Ht Space: 11.00 in

ID	UPC	Barcode	Name	Category	HFacings	Orientation	Units
10183	7199009516		BLUE MOON BELGIAN WHITE 1...	ABOVE PREMIUM	1	Side	2
13037	75452700161		NEW BELGIUM FAT TIRE 12/12 ...	ABOVE PREMIUM	1	Side 90	4





CVS # 2432 WARM

Address: 375 WHITE PLAINS RD | City: EASTCHESTER | State: NY

Chain/StoreNumer: CVS - EAST 2432

Reset Name: 2019 SPRING

Planogram Name: 2432\_8ft\_OPEN\_WARM

7044	64286090024		FOUNDERS ALL DAY SESSION...	ABOVE PREMIUM	1	Side 90	2
15442	8066095765		MODELO ESPECIAL 6/12 BTL	ABOVE PREMIUM	1	Front	3
15448	8066095785		MODELO NEGRA 6/12 BTL	ABOVE PREMIUM	1	Front	3
15400	8066095605		CORONA 6/12 BTL	ABOVE PREMIUM	1	Front	4
15408	8066095625		CORONA LIGHT 6/12 BTL	ABOVE PREMIUM	1	Front	4
6433	63598512998		MIKES HARD VARIETY PACK 1...	ABOVE PREMIUM	1	Side	2
65019	8769200660		ANGRY ORCHARD ROSE 6/12 ...	ABOVE PREMIUM	1	Front	4
1056	1820000769		BUD LIGHT 12/12 BTL	PREMIUM	1	Side	2
1058	1820000771		BUD 12/12 BTL	PREMIUM	1	Side	2
3565	3410057509		LITE 12/12 BTL	PREMIUM	1	Side	2

Name: 1\_3    W:96.00 in    D:24.00 in    Avail Space: 4.40 in    Ht Space: 11.00 in

ID	UPC	Barcode	Name	Category	HFacings	Orientation	Units
11301	7289000020		HEINEKEN 12/12 CAN	ABOVE PREMIUM	1	Side 90	4
11348	7289000188		HEINEKEN LIGHT 12/12 CAN	ABOVE PREMIUM	1	Front 90	4
10790	7231123021		SOL 12/12 BTL	ABOVE PREMIUM	1	Side	2
15426	8066095695		CORONA 12/12 CAN	ABOVE PREMIUM	1	Side 90	4
15429	8066095715		MODELO ESPECIAL 12/12 CAN	ABOVE PREMIUM	1	Side 90	4
23902	8992427896		YUENGLING LAGER 12/12 BTL	PREMIUM	1	Side	2
65828	1820020083		MICHELOB ULTRA PURE GOLD...	ABOVE PREMIUM	1	Side	2



CVS # 2432 WARM

Address: 375 WHITE PLAINS RD | City: EASTCHESTER | State: NY

Chain/StoreNumer: CVS - EAST 2432

Reset Name: 2019 SPRING

Planogram Name: 2432\_8ft\_OPEN\_WARM

1659	1820053047		BUD LIGHT 12/12 CAN	PREMIUM	1	Side 90	4
1297	1820011047		BUD 12/12 CAN	PREMIUM	1	Side 90	4
10164	7199000048		COORS LIGHT 12/12 CAN	PREMIUM	1	Side 90	4
3579	3410057636		LITE 12/12 CAN	PREMIUM	1	Side 90	4
66288	1820028443		NATURAL ICE 15/12 CAN	ECONOMY	1	Side 90	2

Name: 1\_4 W:96.00 in D:24.00 in Avail Space: 2.73 in Ht Space: 11.00 in

ID	UPC	Barcode	Name	Category	HFacings	Orientation	Units
11300	7289000016		HEINEKEN 12/12 BTL	ABOVE PREMIUM	1	Side	2
14094	78615000014		STELLA ARTOIS 12/11.2 BTL	ABOVE PREMIUM	1	Side	2
44952	3354495042		CORONA PREMIER 12/12 BTL	ABOVE PREMIUM	1	Side	2
15403	8066095615		CORONA 12/12 BTL	ABOVE PREMIUM	2	Side	4
15436	8066095757		MODELO ESPECIAL 12/12 BTL	ABOVE PREMIUM	1	Side	2
1850	1820096721		MICHELOB ULTRA 18/12 CAN	ABOVE PREMIUM	1	Side 90	1
1667	1820053218		BUD LIGHT 18/12 CAN	PREMIUM	1	Side 90	2
1307	1820011218		BUD 18/12 CAN	PREMIUM	1	Side 90	2
10329	7199030017		COORS LIGHT 18/12 CAN	PREMIUM	1	Side 90	2
3552	3410057340		LITE 18/12 CAN	PREMIUM	1	Side 90	2
61975	1820020077		NATURAL LIGHT 15/12 CAN	ECONOMY	1	Side 90	2

Name: 1\_5 W:96.00 in D:24.00 in Avail Space: 3.97 in Ht Space: 11.00 in

ID	UPC	Barcode	Name	Category	HFacings	Orientation	Units
----	-----	---------	------	----------	----------	-------------	-------



CVS # 2432 WARM

Address: 375 WHITE PLAINS RD | City: EASTCHESTER | State: NY

Chain/StoreNumer: CVS - EAST 2432

Reset Name: 2019 SPRING

Planogram Name: 2432\_8ft\_OPEN\_WARM

11342	7289000159		HEINEKEN LIGHT 12/12 BTL	ABOVE PREMIUM	1	Side	2
16691	8248812300		BECKS 12/12 BTL	ABOVE PREMIUM	1	Side	2
15416	8066095675		CORONA LIGHT 12/12 BTL	ABOVE PREMIUM	1	Side	2
15417	8066095680		CORONA 18/12 BTL	ABOVE PREMIUM	2	Side	2
15449	8066095787		MODELO NEGRA 12/12 BTL	ABOVE PREMIUM	1	Side	2
1228	1820005990		MICHELOB ULTRA 12/12 BTL	ABOVE PREMIUM	1	Side	2
1056	1820000769		BUD LIGHT 12/12 BTL	PREMIUM	1	Side	2
10348	7199030069		COORS LIGHT 12/12 BTL	PREMIUM	1	Side	2
10352	7199030078		COORS LIGHT 18/12 BTL	PREMIUM	1	Side	1
3198	3410001509		HIGH LIFE 12/12 BTL	ECONOMY	1	Side	2
9905	7143945712		ROLLING ROCK 12/12 BTL	ECONOMY	1	Side	2