



CVS # 8945 COLD

Address: 416 WASHINGTON AVE | City: KINGSTON | State: NY

Chain/StoreNumer: CVS - EAST 8945

Reset Name: 2019 SPRING

Planogram Name: 8945_4_DOOR_COLD

| Segment # 1 : 1_5 DEPTH: 24 in WIDTH: 22 in DISTANCE FROM TOP OF BASE SHELF TO BOTTOM OF SHELF:0.00 in | | | | | | | |
|--|-----|-------------|--|-------|----------|------------|---------------|
| POS # | FAC | UPC | NAME | CASES | CAPACITY | UNITS HIGH | Category |
| 1 | 1 | 64286090024 | FOUNDERS ALL DAY SESSION IPA 15/12 CAN | 2.0 | 4 | 1 | ABOVE PREMIUM |
| 2 | 1 | 7289000016 | HEINEKEN 12/12 BTL | 2.0 | 4 | 1 | ABOVE PREMIUM |
| 3 | 1 | 8248812300 | BECKS 12/12 BTL | 2.0 | 4 | 1 | ABOVE PREMIUM |

| Segment # 1 : 1_4 DEPTH: 24 in WIDTH: 22 in DISTANCE FROM TOP OF BASE SHELF TO BOTTOM OF SHELF:21.00 in | | | | | | | |
|---|-----|-------------|---------------------------|-------|----------|------------|---------------|
| POS # | FAC | UPC | NAME | CASES | CAPACITY | UNITS HIGH | Category |
| 1 | 1 | 7289000020 | HEINEKEN 12/12 CAN | 2.0 | 4 | 1 | ABOVE PREMIUM |
| 2 | 1 | 7289000159 | HEINEKEN LIGHT 12/12 BTL | 2.0 | 4 | 1 | ABOVE PREMIUM |
| 3 | 1 | 78615000014 | STELLA ARTOIS 12/11.2 BTL | 2.0 | 4 | 1 | ABOVE PREMIUM |

| Segment # 1 : 1_3 DEPTH: 24 in WIDTH: 22 in DISTANCE FROM TOP OF BASE SHELF TO BOTTOM OF SHELF:42.00 in | | | | | | | |
|---|-----|-------------|-------------------------------------|-------|----------|------------|---------------|
| POS # | FAC | UPC | NAME | CASES | CAPACITY | UNITS HIGH | Category |
| 1 | 1 | 7199009516 | BLUE MOON BELGIAN WHITE 12/12 BTL | 1.0 | 2 | 1 | ABOVE PREMIUM |
| 2 | 1 | 63598512998 | MIKES HARD VARIETY PACK 12/11.2 BTL | 1.0 | 2 | 1 | ABOVE PREMIUM |
| 3 | 1 | 78615000001 | STELLA ARTOIS 6/11.2 BTL | 0.8 | 3 | 1 | ABOVE PREMIUM |

| Segment # 1 : 1_2 DEPTH: 24 in WIDTH: 22 in DISTANCE FROM TOP OF BASE SHELF TO BOTTOM OF SHELF:54.00 in | | | | | | | |
|---|-----|------------|----------------------------------|-------|----------|------------|---------------|
| POS # | FAC | UPC | NAME | CASES | CAPACITY | UNITS HIGH | Category |
| 1 | 1 | 7199009511 | BLUE MOON BELGIAN WHITE 6/12 BTL | 0.8 | 3 | 1 | ABOVE PREMIUM |
| 2 | 1 | 7199009532 | BLUE MOON SEASONAL 6/12 BTL | 0.8 | 3 | 1 | ABOVE PREMIUM |
| 3 | 1 | 1820013986 | SHOCK TOP BELGIAN WHITE 6/12 BTL | 0.8 | 3 | 1 | ABOVE PREMIUM |
| 4 | 1 | 7289000011 | HEINEKEN 6/12 BTL | 0.8 | 3 | 1 | ABOVE PREMIUM |

| Segment # 1 : 1_1 DEPTH: 24 in WIDTH: 22 in DISTANCE FROM TOP OF BASE SHELF TO BOTTOM OF SHELF:65.00 in | | | | | | | |
|---|-----|-------------|--|-------|----------|------------|---------------|
| POS # | FAC | UPC | NAME | CASES | CAPACITY | UNITS HIGH | Category |
| 1 | 1 | 81760601020 | CAPTAIN LAWRENCE IPA 6/12 BTL | 0.8 | 3 | 1 | ABOVE PREMIUM |
| 2 | 1 | 81760601000 | CAPTAIN LAWRENCE FRESHCHESTER 6/12 BTL | 0.8 | 3 | 1 | ABOVE PREMIUM |
| 3 | 1 | 8769230050 | SAMUEL ADAMS SEASONAL 6/12 BTL (A) | 0.8 | 3 | 1 | ABOVE PREMIUM |
| 4 | 1 | 8769210012 | SAMUEL ADAMS BOSTON LAGER 6/12 BTL | 0.8 | 3 | 1 | ABOVE PREMIUM |

| Segment # 2 : 2_5 DEPTH: 24 in WIDTH: 22 in DISTANCE FROM TOP OF BASE SHELF TO BOTTOM OF SHELF:0.00 in | | | | | | | |
|--|-----|------------|--------------------------|-------|----------|------------|---------------|
| POS # | FAC | UPC | NAME | CASES | CAPACITY | UNITS HIGH | Category |
| 1 | 1 | 8066095695 | CORONA 12/12 CAN | 2.0 | 4 | 1 | ABOVE PREMIUM |
| 2 | 1 | 3354495042 | CORONA PREMIER 12/12 BTL | 2.0 | 4 | 1 | ABOVE PREMIUM |
| 3 | 1 | 8066095680 | CORONA 18/12 BTL | 2.0 | 2 | 1 | ABOVE PREMIUM |

| Segment # 2 : 2_4 DEPTH: 24 in WIDTH: 22 in DISTANCE FROM TOP OF BASE SHELF TO BOTTOM OF SHELF:21.00 in | | | | | | | |
|---|-----|------------|---------------------------|-------|----------|------------|---------------|
| POS # | FAC | UPC | NAME | CASES | CAPACITY | UNITS HIGH | Category |
| 1 | 1 | 8066095715 | MODELO ESPECIAL 12/12 CAN | 2.0 | 4 | 1 | ABOVE PREMIUM |
| 2 | 1 | 8066095675 | CORONA LIGHT 12/12 BTL | 2.0 | 4 | 1 | ABOVE PREMIUM |
| 3 | 1 | 8066095615 | CORONA 12/12 BTL | 2.0 | 4 | 1 | ABOVE PREMIUM |



CVS # 8945 COLD

Address: 416 WASHINGTON AVE | City: KINGSTON | State: NY

Chain/StoreNumer: CVS - EAST 8945

Reset Name: 2019 SPRING

Planogram Name: 8945_4_DOOR_COLD

Segment # 2 : 2_3 DEPTH: 24 in WIDTH: 22 in DISTANCE FROM TOP OF BASE SHELF TO BOTTOM OF SHELF:42.00 in

| POS | # FAC | UPC | NAME | CASES | CAPACITY | UNITS HIGH | Category |
|-----|-------|------------|---------------------------|-------|----------|------------|---------------|
| 1 | 1 | 8066095757 | MODELO ESPECIAL 12/12 BTL | 1.0 | 2 | 1 | ABOVE PREMIUM |
| 2 | 1 | 8066095765 | MODELO ESPECIAL 6/12 BTL | 0.5 | 2 | 1 | ABOVE PREMIUM |
| 3 | 1 | 8066095605 | CORONA 6/12 BTL | 0.8 | 3 | 1 | ABOVE PREMIUM |

Segment # 2 : 2_2 DEPTH: 24 in WIDTH: 22 in DISTANCE FROM TOP OF BASE SHELF TO BOTTOM OF SHELF:54.00 in

| POS | # FAC | UPC | NAME | CASES | CAPACITY | UNITS HIGH | Category |
|-----|-------|-------------|-----------------------------------|-------|----------|------------|---------------|
| 1 | 1 | 63598554890 | WHITE CLAW VARIETY PACK 12/12 CAN | 1.5 | 3 | 1 | ABOVE PREMIUM |
| 2 | 1 | 3354400013 | CORONA REFRESCA VARIETY 12/12 CAN | 1.5 | 3 | 1 | ABOVE PREMIUM |
| 3 | 1 | 7231123021 | SOL 12/12 BTL | 1.0 | 2 | 1 | ABOVE PREMIUM |

Segment # 2 : 2_1 DEPTH: 24 in WIDTH: 22 in DISTANCE FROM TOP OF BASE SHELF TO BOTTOM OF SHELF:65.00 in

| POS | # FAC | UPC | NAME | CASES | CAPACITY | UNITS HIGH | Category |
|-----|-------|------------|------------------------------------|-------|----------|------------|---------------|
| 1 | 1 | 3410051681 | CAPE LINE VARIETY PACK 12/12 CAN | 1.5 | 3 | 1 | ABOVE PREMIUM |
| 2 | 1 | 8769282102 | ANGRY ORCHARD CRISP APPLE 6/12 BTL | 0.8 | 3 | 1 | ABOVE PREMIUM |
| 3 | 1 | 8066095625 | CORONA LIGHT 6/12 BTL | 0.8 | 3 | 1 | ABOVE PREMIUM |
| 4 | 1 | 7231163012 | DOS EQUIS 6/12 BTL | 0.8 | 3 | 1 | ABOVE PREMIUM |

Segment # 3 : 3_5 DEPTH: 24 in WIDTH: 22 in DISTANCE FROM TOP OF BASE SHELF TO BOTTOM OF SHELF:0.00 in

| POS | # FAC | UPC | NAME | CASES | CAPACITY | UNITS HIGH | Category |
|-----|-------|------------|-----------------------|-------|----------|------------|----------|
| 1 | 1 | 1820011030 | BUD 30/12 CAN | 4.0 | 4 | 1 | PREMIUM |
| 2 | 1 | 7199030030 | COORS LIGHT 30/12 CAN | 4.0 | 4 | 1 | PREMIUM |
| 3 | 1 | 7199030017 | COORS LIGHT 18/12 CAN | 3.0 | 3 | 1 | PREMIUM |

Segment # 3 : 3_4 DEPTH: 24 in WIDTH: 22 in DISTANCE FROM TOP OF BASE SHELF TO BOTTOM OF SHELF:23.00 in

| POS | # FAC | UPC | NAME | CASES | CAPACITY | UNITS HIGH | Category |
|-----|-------|------------|-----------------------|-------|----------|------------|----------|
| 1 | 1 | 1820053218 | BUD LIGHT 18/12 CAN | 3.0 | 3 | 1 | PREMIUM |
| 2 | 1 | 7199030078 | COORS LIGHT 18/12 BTL | 2.0 | 2 | 1 | PREMIUM |
| 3 | 1 | 7199030069 | COORS LIGHT 12/12 BTL | 2.0 | 4 | 1 | PREMIUM |

Segment # 3 : 3_3 DEPTH: 24 in WIDTH: 22 in DISTANCE FROM TOP OF BASE SHELF TO BOTTOM OF SHELF:43.00 in

| POS | # FAC | UPC | NAME | CASES | CAPACITY | UNITS HIGH | Category |
|-----|-------|------------|---------------------------|-------|----------|------------|---------------|
| 1 | 1 | 1820020079 | BUD LIGHT ORANGE 6/12 BTL | 0.8 | 3 | 1 | ABOVE PREMIUM |
| 2 | 1 | 1820053047 | BUD LIGHT 12/12 CAN | 1.0 | 2 | 1 | PREMIUM |
| 3 | 1 | 1820011047 | BUD 12/12 CAN | 1.0 | 2 | 1 | PREMIUM |
| 4 | 1 | 1820011218 | BUD 18/12 CAN | 1.0 | 1 | 1 | PREMIUM |

Segment # 3 : 3_2 DEPTH: 24 in WIDTH: 22 in DISTANCE FROM TOP OF BASE SHELF TO BOTTOM OF SHELF:54.00 in

| POS | # FAC | UPC | NAME | CASES | CAPACITY | UNITS HIGH | Category |
|-----|-------|------------|-------------------------|-------|----------|------------|---------------|
| 1 | 1 | 1820005989 | MICHELOB ULTRA 6/12 BTL | 0.8 | 3 | 1 | ABOVE PREMIUM |
| 2 | 1 | 1820000769 | BUD LIGHT 12/12 BTL | 1.0 | 2 | 1 | PREMIUM |
| 3 | 1 | 1820000771 | BUD 12/12 BTL | 1.0 | 2 | 1 | PREMIUM |

Segment # 3 : 3_1 DEPTH: 24 in WIDTH: 22 in DISTANCE FROM TOP OF BASE SHELF TO BOTTOM OF SHELF:65.00 in



CVS # 8945 COLD

Address: 416 WASHINGTON AVE | City: KINGSTON | State: NY

Chain/StoreNumer: CVS - EAST 8945

Reset Name: 2019 SPRING

Planogram Name: 8945_4_DOOR_COLD

| POS | # FAC | UPC | NAME | CASES | CAPACITY | UNITS HIGH | Category |
|-----|-------|-------------|--|-------|----------|------------|---------------|
| 1 | 1 | 85389700227 | BON AND VIV SPIKED SELTZER VARIETY 12/12 CAN | 1.5 | 3 | 1 | ABOVE PREMIUM |
| 2 | 1 | 1820005990 | MICHELOB ULTRA 12/12 BTL | 1.0 | 2 | 1 | ABOVE PREMIUM |
| 3 | 1 | 7199000008 | COORS LIGHT 6/12 CAN | 1.5 | 6 | 1 | PREMIUM |
| 4 | 1 | 7199030065 | COORS LIGHT 1/24 CAN | 0.7 | 8 | 1 | PREMIUM |

Segment # 4 : 4_5 DEPTH: 24 in WIDTH: 22 in DISTANCE FROM TOP OF BASE SHELF TO BOTTOM OF SHELF:0.00 in

| POS | # FAC | UPC | NAME | CASES | CAPACITY | UNITS HIGH | Category |
|-----|-------|------------|-----------------------|-------|----------|------------|----------|
| 1 | 1 | 3410057340 | LITE 18/12 CAN | 3.0 | 3 | 1 | PREMIUM |
| 2 | 1 | 1820061030 | BUSCH 30/12 CAN | 2.0 | 2 | 1 | ECONOMY |
| 3 | 1 | 1820086031 | BUSCH LIGHT 30/12 CAN | 2.0 | 2 | 1 | ECONOMY |

Segment # 4 : 4_4 DEPTH: 24 in WIDTH: 22 in DISTANCE FROM TOP OF BASE SHELF TO BOTTOM OF SHELF:23.00 in

| POS | # FAC | UPC | NAME | CASES | CAPACITY | UNITS HIGH | Category |
|-----|-------|------------|-------------------------|-------|----------|------------|----------|
| 1 | 1 | 7199000048 | COORS LIGHT 12/12 CAN | 2.0 | 4 | 1 | PREMIUM |
| 2 | 1 | 3410057636 | LITE 12/12 CAN | 2.0 | 4 | 1 | PREMIUM |
| 3 | 1 | 1820028443 | NATURAL ICE 15/12 CAN | 1.0 | 2 | 1 | ECONOMY |
| 4 | 1 | 1820020077 | NATURAL LIGHT 15/12 CAN | 1.0 | 2 | 1 | ECONOMY |

Segment # 4 : 4_3 DEPTH: 24 in WIDTH: 22 in DISTANCE FROM TOP OF BASE SHELF TO BOTTOM OF SHELF:43.00 in

| POS | # FAC | UPC | NAME | CASES | CAPACITY | UNITS HIGH | Category |
|-----|-------|------------|---------------------|-------|----------|------------|----------|
| 1 | 1 | 3410057509 | LITE 12/12 BTL | 1.0 | 2 | 1 | PREMIUM |
| 2 | 1 | 3410001509 | HIGH LIFE 12/12 BTL | 1.0 | 2 | 1 | ECONOMY |
| 3 | 1 | 3410000007 | HIGH LIFE 6/16 CAN | 0.8 | 3 | 1 | ECONOMY |

Segment # 4 : 4_2 DEPTH: 24 in WIDTH: 22 in DISTANCE FROM TOP OF BASE SHELF TO BOTTOM OF SHELF:54.00 in

| POS | # FAC | UPC | NAME | CASES | CAPACITY | UNITS HIGH | Category |
|-----|-------|------------|--|-------|----------|------------|---------------|
| 1 | 1 | 1820025505 | BUD LIGHT LIME STRAW-BER-RITA 1/25 CAN | 0.5 | 8 | 1 | ABOVE PREMIUM |
| 2 | 1 | 1820025001 | BUD LIGHT 1/25 CAN | 0.5 | 8 | 1 | PREMIUM |
| 3 | 1 | 1820025000 | BUD 1/25 CAN | 0.5 | 8 | 1 | PREMIUM |
| 4 | 1 | 7199010071 | COORS BANQUET 1/24 CAN | 0.7 | 8 | 1 | PREMIUM |
| 5 | 1 | 3410000355 | LITE 1/24 CAN | 0.7 | 8 | 1 | PREMIUM |
| 6 | 1 | 7199047712 | KEYSTONE ICE 1/24 CAN | 0.7 | 8 | 1 | ECONOMY |
| 7 | 1 | 3410000820 | MILWAUKEES BEST ICE 1/24 CAN | 0.7 | 8 | 1 | ECONOMY |

Segment # 4 : 4_1 DEPTH: 24 in WIDTH: 22 in DISTANCE FROM TOP OF BASE SHELF TO BOTTOM OF SHELF:65.00 in

| POS | # FAC | UPC | NAME | CASES | CAPACITY | UNITS HIGH | Category |
|-----|-------|-------------|---|-------|----------|------------|---------------|
| 1 | 1 | 7089701331 | FOSTERS 1/25.4 CAN | 0.6 | 7 | 1 | ABOVE PREMIUM |
| 2 | 1 | 7289000119 | HEINEKEN 1/24 CAN | 0.7 | 8 | 1 | ABOVE PREMIUM |
| 3 | 1 | 6821309451 | MOLSON ICE 1/24 CAN | 0.7 | 8 | 1 | ABOVE PREMIUM |
| 4 | 1 | 8066095643 | CORONA 1/24 CAN | 0.7 | 8 | 1 | ABOVE PREMIUM |
| 5 | 1 | 8066095721 | MODELO ESPECIAL 1/24 CAN | 0.7 | 8 | 1 | ABOVE PREMIUM |
| 6 | 1 | 61300874829 | ARNOLD PALMER SPIKED HALF AND HALF 1/24 CAN | 0.7 | 8 | 1 | ABOVE PREMIUM |
| 7 | 1 | 3410000323 | REDD'S WICKED 1/24 CAN | 0.7 | 8 | 1 | ABOVE PREMIUM |

REVERSE VIEW (ONLY IF NEEDED)





CVS # 8945 COLD

Reset Timing 2019 SPRING

Address: 416 WASHINGTON AVE | City: KINGSTON | State: NY

REVERSE VIEW (ONLY IF NEEDED)

Segment:
1 of 4



Segment # 1 : 1_5 0.00 In

| POS | UPC | NAME |
|-----|-------------|---|
| 1 | 64286090024 | FOUNDERS ALL DAY SESSION IPA 15/ 12 CAN |
| 2 | 7289000016 | HEINEKEN 12/ 12 BTL |
| 3 | 8248812300 | BECKS 12/ 12 BTL |

Segment # 1 : 1_4 21.00 In

| POS | UPC | NAME |
|-----|-------------|----------------------------|
| 1 | 7289000020 | HEINEKEN 12/ 12 CAN |
| 2 | 7289000159 | HEINEKEN LIGHT 12/ 12 BTL |
| 3 | 78615000014 | STELLA ARTOIS 12/ 11.2 BTL |

Segment # 1 : 1_3 42.00 In

| POS | UPC | NAME |
|-----|-------------|--------------------------------------|
| 1 | 7199009516 | BLUE MOON BELGIAN WHITE 12/ 12 BTL |
| 2 | 63598512998 | MIKES HARD VARIETY PACK 12/ 11.2 BTL |
| 3 | 78615000001 | STELLA ARTOIS 6/ 11.2 BTL |

Segment # 1 : 1_2 54.00 In

| POS | UPC | NAME |
|-----|------------|-----------------------------------|
| 1 | 7199009511 | BLUE MOON BELGIAN WHITE 6/ 12 BTL |
| 2 | 7199009532 | BLUE MOON SEASONAL 6/ 12 BTL |
| 3 | 1820013986 | SHOCK TOP BELGIAN WHITE 6/ 12 BTL |
| 4 | 7289000011 | HEINEKEN 6/ 12 BTL |

Segment # 1 : 1_1 65.00 In

| POS | UPC | NAME |
|-----|-------------|---|
| 1 | 81760601020 | CAPTAIN LAWRENCE IPA 6/ 12 BTL |
| 2 | 81760601000 | CAPTAIN LAWRENCE FRESHCHESTER 6/ 12 BTL |
| 3 | 8769230050 | SAMUEL ADAMS SEASONAL 6/ 12 BTL (A) |
| 4 | 8769210012 | SAMUEL ADAMS BOSTON LAGER 6/ 12 BTL |



CVS # 8945 COLD

Reset Timing 2019 SPRING

Address: 416 WASHINGTON AVE | City: KINGSTON | State: NY

REVERSE VIEW (ONLY IF NEEDED)

Segment:
2 of 4



Segment # 2 : 2_5 0.00 In

| POS | UPC | NAME |
|-----|------------|---------------------------|
| 1 | 8066095695 | CORONA 12/ 12 CAN |
| 2 | 3354495042 | CORONA PREMIER 12/ 12 BTL |
| 3 | 8066095680 | CORONA 18/ 12 BTL |

Segment # 2 : 2_4 21.00 In

| POS | UPC | NAME |
|-----|------------|----------------------------|
| 1 | 8066095715 | MODELO ESPECIAL 12/ 12 CAN |
| 2 | 8066095675 | CORONA LIGHT 12/ 12 BTL |
| 3 | 8066095615 | CORONA 12/ 12 BTL |

Segment # 2 : 2_3 42.00 In

| POS | UPC | NAME |
|-----|------------|----------------------------|
| 1 | 8066095757 | MODELO ESPECIAL 12/ 12 BTL |
| 2 | 8066095765 | MODELO ESPECIAL 6/ 12 BTL |
| 3 | 8066095605 | CORONA 6/ 12 BTL |

Segment # 2 : 2_2 54.00 In

| POS | UPC | NAME |
|-----|-------------|------------------------------------|
| 1 | 63598554890 | WHITE CLAW VARIETY PACK 12/ 12 CAN |
| 2 | 3354400013 | CORONA REFRESCA VARIETY 12/ 12 CAN |
| 3 | 7231123021 | SOL 12/ 12 BTL |

Segment # 2 : 2_1 65.00 In

| POS | UPC | NAME |
|-----|------------|-------------------------------------|
| 1 | 3410051681 | CAPE LINE VARIETY PACK 12/ 12 CAN |
| 2 | 8769282102 | ANGRY ORCHARD CRISP APPLE 6/ 12 BTL |
| 3 | 8066095625 | CORONA LIGHT 6/ 12 BTL |
| 4 | 7231163012 | DOS EQUIS 6/ 12 BTL |



CVS # 8945 COLD

Reset Timing 2019 SPRING

Address: 416 WASHINGTON AVE | City: KINGSTON | State: NY

REVERSE VIEW (ONLY IF NEEDED)

Segment:
3 of 4



Segment # 3 : 3_5 0.00 In

| POS | UPC | NAME |
|-----|------------|------------------------|
| 1 | 1820011030 | BUD 30/ 12 CAN |
| 2 | 7199030030 | COORS LIGHT 30/ 12 CAN |
| 3 | 7199030017 | COORS LIGHT 18/ 12 CAN |

Segment # 3 : 3_4 23.00 In

| POS | UPC | NAME |
|-----|------------|------------------------|
| 1 | 1820053218 | BUD LIGHT 18/ 12 CAN |
| 2 | 7199030078 | COORS LIGHT 18/ 12 BTL |
| 3 | 7199030069 | COORS LIGHT 12/ 12 BTL |

Segment # 3 : 3_3 43.00 In

| POS | UPC | NAME |
|-----|------------|----------------------------|
| 1 | 1820020079 | BUD LIGHT ORANGE 6/ 12 BTL |
| 2 | 1820053047 | BUD LIGHT 12/ 12 CAN |
| 3 | 1820011047 | BUD 12/ 12 CAN |
| 4 | 1820011218 | BUD 18/ 12 CAN |

Segment # 3 : 3_2 54.00 In

| POS | UPC | NAME |
|-----|------------|--------------------------|
| 1 | 1820005989 | MICHELOB ULTRA 6/ 12 BTL |
| 2 | 1820000769 | BUD LIGHT 12/ 12 BTL |
| 3 | 1820000771 | BUD 12/ 12 BTL |

Segment # 3 : 3_1 65.00 In

| POS | UPC | NAME |
|-----|-------------|---|
| 1 | 85389700227 | BON AND VIV SPIKED SELTZER VARIETY 12/ 12 CAN |
| 2 | 1820005990 | MICHELOB ULTRA 12/ 12 BTL |
| 3 | 7199000008 | COORS LIGHT 6/ 12 CAN |
| 4 | 7199030065 | COORS LIGHT 1/ 24 CAN |



CVS # 8945 COLD

Reset Timing 2019 SPRING

Address: 416 WASHINGTON AVE | City: KINGSTON | State: NY

REVERSE VIEW (ONLY IF NEEDED)

Segment:
4 of 4



Segment # 4 : 4_5 0.00 In

| POS | UPC | NAME |
|-----|------------|------------------------|
| 1 | 3410057340 | LITE 18/ 12 CAN |
| 2 | 1820061030 | BUSCH 30/ 12 CAN |
| 3 | 1820086031 | BUSCH LIGHT 30/ 12 CAN |

Segment # 4 : 4_4 23.00 In

| POS | UPC | NAME |
|-----|------------|--------------------------|
| 1 | 7199000048 | COORS LIGHT 12/ 12 CAN |
| 2 | 3410057636 | LITE 12/ 12 CAN |
| 3 | 1820028443 | NATURAL ICE 15/ 12 CAN |
| 4 | 1820020077 | NATURAL LIGHT 15/ 12 CAN |

Segment # 4 : 4_3 43.00 In

| POS | UPC | NAME |
|-----|------------|----------------------|
| 1 | 3410057509 | LITE 12/ 12 BTL |
| 2 | 3410001509 | HIGH LIFE 12/ 12 BTL |
| 3 | 3410000007 | HIGH LIFE 6/ 16 CAN |

Segment # 4 : 4_2 54.00 In

| POS | UPC | NAME |
|-----|------------|--|
| 1 | 1820025505 | BUD LIGHT LIME STRAW-BER-RITA 1/25 CAN |
| 2 | 1820025001 | BUD LIGHT 1/25 CAN |
| 3 | 1820025000 | BUD 1/25 CAN |
| 4 | 7199010071 | COORS BANQUET 1/24 CAN |
| 5 | 3410000355 | LITE 1/24 CAN |
| 6 | 7199047712 | KEYSTONE ICE 1/24 CAN |
| 7 | 3410000820 | MILWAUKEES BEST ICE 1/24 CAN |

Segment # 4 : 4_1 65.00 In

| POS | UPC | NAME |
|-----|-------------|---|
| 1 | 7089701331 | FOSTERS 1/25.4 CAN |
| 2 | 7289000119 | HEINEKEN 1/24 CAN |
| 3 | 6821309451 | MOLSON ICE 1/24 CAN |
| 4 | 8066095643 | CORONA 1/24 CAN |
| 5 | 8066095721 | MODELO ESPECIAL 1/24 CAN |
| 6 | 61300874829 | ARNOLD PALMER SPIKED HALF AND HALF 1/24 CAN |
| 7 | 3410000323 | REDD'S WICKED 1/24 CAN |



CVS # 8945 COLD

Address: 416 WASHINGTON AVE | City: KINGSTON | State: NY

Chain/StoreNumer: CVS - EAST 8945

Reset Name: 2019 SPRING

Planogram Name: 8945_4_DOOR_COLD

CVS PHARMA... Store # 8945 H: 6 ft 6.00 in W: 7 ft 4.00 in D: 2 ft # of segments: 4

Name: 1_1 W:22.00 in D:24.00 in Avail Space: 1.86 in Ht Space: 12.00 in

| ID | UPC | Barcode | Name | Category | HFacings | Orientation | Units |
|-------|-------------|-----------------|-------------------------------|---------------|----------|-------------|-------|
| 15961 | 81760601020 | 8 17606 01020 9 | CAPTAIN LAWRENCE IPA 6/12 ... | ABOVE PREMIUM | 1 | Side | 3 |
| 15955 | 81760601000 | 8 17606 01000 1 | CAPTAIN LAWRENCE FRESHC... | ABOVE PREMIUM | 1 | Side | 3 |
| 21995 | 8769230050 | 0 87692 30050 2 | SAMUEL ADAMS SEASONAL 6/... | ABOVE PREMIUM | 1 | Side | 3 |
| 21956 | 8769210012 | 0 87692 10012 6 | SAMUEL ADAMS BOSTON LAG... | ABOVE PREMIUM | 1 | Side | 3 |

Name: 1_2 W:22.00 in D:24.00 in Avail Space: 2.01 in Ht Space: 10.00 in

| ID | UPC | Barcode | Name | Category | HFacings | Orientation | Units |
|-------|------------|-----------------|------------------------------|---------------|----------|-------------|-------|
| 10180 | 7199009511 | 0 71990 09511 6 | BLUE MOON BELGIAN WHITE 6... | ABOVE PREMIUM | 1 | Side | 3 |
| 10190 | 7199009532 | 0 71990 09532 1 | BLUE MOON SEASONAL 6/12 B... | ABOVE PREMIUM | 1 | Side | 3 |
| 1345 | 1820013986 | 0 18200 13986 4 | SHOCK TOP BELGIAN WHITE 6... | ABOVE PREMIUM | 1 | Side | 3 |
| 11298 | 7289000011 | 0 72890 00011 8 | HEINEKEN 6/12 BTL | ABOVE PREMIUM | 1 | Side | 3 |

Name: 1_3 W:22.00 in D:24.00 in Avail Space: 2.12 in Ht Space: 11.00 in

| ID | UPC | Barcode | Name | Category | HFacings | Orientation | Units |
|-------|-------------|-----------------|------------------------------|---------------|----------|-------------|-------|
| 10183 | 7199009516 | 0 71990 09516 1 | BLUE MOON BELGIAN WHITE 1... | ABOVE PREMIUM | 1 | Side | 2 |
| 6433 | 63598512998 | 6 35985 12998 1 | MIKES HARD VARIETY PACK 1... | ABOVE PREMIUM | 1 | Side | 2 |
| 14089 | 78615000001 | 7 86150 00001 4 | STELLA ARTOIS 6/11.2 BTL | ABOVE PREMIUM | 1 | Side | 3 |

Name: 1_4 W:22.00 in D:24.00 in Avail Space: 2.23 in Ht Space: 20.00 in

| ID | UPC | Barcode | Name | Category | HFacings | Orientation | Units |
|-------|-------------|-----------------|---------------------------|---------------|----------|-------------|-------|
| 11301 | 7289000020 | 0 72890 00020 0 | HEINEKEN 12/12 CAN | ABOVE PREMIUM | 1 | Side | 4 |
| 11342 | 7289000159 | 0 72890 00159 7 | HEINEKEN LIGHT 12/12 BTL | ABOVE PREMIUM | 1 | Side | 4 |
| 14094 | 78615000014 | 7 86150 00014 4 | STELLA ARTOIS 12/11.2 BTL | ABOVE PREMIUM | 1 | Side | 4 |



CVS # 8945 COLD

Address: 416 WASHINGTON AVE | City: KINGSTON | State: NY

Chain/StoreNumer: CVS - EAST 8945

Reset Name: 2019 SPRING

Planogram Name: 8945_4_DOOR_COLD

| Name: 1_5 | | W:22.00 in | D:24.00 in | Avail Space: 2.44 in | | Ht Space: 20.00 in | |
|-----------|-------------|-----------------|-----------------------------|----------------------|----------|--------------------|-------|
| ID | UPC | Barcode | Name | Category | HFacings | Orientation | Units |
| 7044 | 64286090024 | 6 42860 90024 5 | FOUNDERS ALL DAY SESSION... | ABOVE PREMIUM | 1 | Side | 4 |
| 11300 | 7289000016 | 0 72890 00016 3 | HEINEKEN 12/12 BTL | ABOVE PREMIUM | 1 | Side | 4 |
| 16691 | 8248812300 | 0 82488 12300 6 | BECKS 12/12 BTL | ABOVE PREMIUM | 1 | Side | 4 |

| Name: 2_1 | | W:22.00 in | D:24.00 in | Avail Space: 0.37 in | | Ht Space: 12.00 in | |
|-----------|------------|-----------------|--------------------------------|----------------------|----------|--------------------|-------|
| ID | UPC | Barcode | Name | Category | HFacings | Orientation | Units |
| 86788 | 3410051681 | 0 34100 51681 9 | CAPE LINE VARIETY PACK 12/1... | ABOVE PREMIUM | 1 | Front 90 | 3 |
| 22090 | 8769282102 | 0 87692 82102 1 | ANGRY ORCHARD CRISP APP... | ABOVE PREMIUM | 1 | Side | 3 |
| 15408 | 8066095625 | 0 80660 95625 1 | CORONA LIGHT 6/12 BTL | ABOVE PREMIUM | 1 | Side | 3 |
| 10813 | 7231163012 | 0 72311 63012 2 | DOS EQUIS 6/12 BTL | ABOVE PREMIUM | 1 | Side | 3 |

| Name: 2_2 | | W:22.00 in | D:24.00 in | Avail Space: 1.41 in | | Ht Space: 10.00 in | |
|-----------|-------------|-----------------|------------------------------|----------------------|----------|--------------------|-------|
| ID | UPC | Barcode | Name | Category | HFacings | Orientation | Units |
| 45151 | 63598554890 | 6 35985 54890 4 | WHITE CLAW VARIETY PACK 1... | ABOVE PREMIUM | 1 | Top 90 | 3 |
| 86777 | 3354400013 | 0 33544 00013 7 | CORONA REFRESCA VARIETY... | ABOVE PREMIUM | 1 | Top 90 | 3 |
| 10790 | 7231123021 | 0 72311 23021 6 | SOL 12/12 BTL | ABOVE PREMIUM | 1 | Side | 2 |

| Name: 2_3 | | W:22.00 in | D:24.00 in | Avail Space: 1.30 in | | Ht Space: 11.00 in | |
|-----------|------------|-----------------|---------------------------|----------------------|----------|--------------------|-------|
| ID | UPC | Barcode | Name | Category | HFacings | Orientation | Units |
| 15436 | 8066095757 | 0 80660 95757 9 | MODELO ESPECIAL 12/12 BTL | ABOVE PREMIUM | 1 | Side | 2 |
| 15442 | 8066095765 | 0 80660 95765 4 | MODELO ESPECIAL 6/12 BTL | ABOVE PREMIUM | 1 | Side | 2 |
| 15400 | 8066095605 | 0 80660 95605 3 | CORONA 6/12 BTL | ABOVE PREMIUM | 1 | Side | 3 |

| Name: 2_4 | | W:22.00 in | D:24.00 in | Avail Space: 1.57 in | | Ht Space: 20.00 in | |
|-----------|-----|------------|------------|----------------------|----------|--------------------|-------|
| ID | UPC | Barcode | Name | Category | HFacings | Orientation | Units |



CVS # 8945 COLD

Address: 416 WASHINGTON AVE | City: KINGSTON | State: NY

Chain/StoreNumer: CVS - EAST 8945

Reset Name: 2019 SPRING

Planogram Name: 8945_4_DOOR_COLD

| | | | | | | | |
|-------|------------|--|---------------------------|---------------|---|------|---|
| 15429 | 8066095715 | | MODELO ESPECIAL 12/12 CAN | ABOVE PREMIUM | 1 | Side | 4 |
| 15416 | 8066095675 | | CORONA LIGHT 12/12 BTL | ABOVE PREMIUM | 1 | Side | 4 |
| 15403 | 8066095615 | | CORONA 12/12 BTL | ABOVE PREMIUM | 1 | Side | 4 |

Name: 2_5 W:22.00 in D:24.00 in Avail Space: 1.38 in Ht Space: 20.00 in

| ID | UPC | Barcode | Name | Category | HFacings | Orientation | Units |
|-------|------------|---------|--------------------------|---------------|----------|-------------|-------|
| 15426 | 8066095695 | | CORONA 12/12 CAN | ABOVE PREMIUM | 1 | Side | 4 |
| 44952 | 3354495042 | | CORONA PREMIER 12/12 BTL | ABOVE PREMIUM | 1 | Side | 4 |
| 15417 | 8066095680 | | CORONA 18/12 BTL | ABOVE PREMIUM | 1 | Side | 2 |

Name: 3_1 W:22.00 in D:24.00 in Avail Space: 0.63 in Ht Space: 12.00 in

| ID | UPC | Barcode | Name | Category | HFacings | Orientation | Units |
|-------|-------------|---------|------------------------------|---------------|----------|-------------|-------|
| 19178 | 85389700227 | | BON AND VIV SPIKED SELTZE... | ABOVE PREMIUM | 1 | Front 90 | 3 |
| 1228 | 1820005990 | | MICHELOB ULTRA 12/12 BTL | ABOVE PREMIUM | 1 | Side | 2 |
| 10155 | 7199000008 | | COORS LIGHT 6/12 CAN | PREMIUM | 1 | Side | 6 |
| 10346 | 7199030065 | | COORS LIGHT 1/24 CAN | PREMIUM | 1 | Front | 8 |

Name: 3_2 W:22.00 in D:24.00 in Avail Space: 2.26 in Ht Space: 10.00 in

| ID | UPC | Barcode | Name | Category | HFacings | Orientation | Units |
|------|------------|---------|-------------------------|---------------|----------|-------------|-------|
| 1227 | 1820005989 | | MICHELOB ULTRA 6/12 BTL | ABOVE PREMIUM | 1 | Side | 3 |
| 1056 | 1820000769 | | BUD LIGHT 12/12 BTL | PREMIUM | 1 | Side | 2 |
| 1058 | 1820000771 | | BUD 12/12 BTL | PREMIUM | 1 | Side | 2 |

Name: 3_3 W:22.00 in D:24.00 in Avail Space: 2.11 in Ht Space: 10.00 in

| ID | UPC | Barcode | Name | Category | HFacings | Orientation | Units |
|-------|------------|---------|---------------------------|---------------|----------|-------------|-------|
| 67176 | 1820020079 | | BUD LIGHT ORANGE 6/12 BTL | ABOVE PREMIUM | 1 | Side | 3 |



CVS # 8945 COLD

Address: 416 WASHINGTON AVE | City: KINGSTON | State: NY

Chain/StoreNumer: CVS - EAST 8945

Reset Name: 2019 SPRING

Planogram Name: 8945_4_DOOR_COLD

| | | | | | | | |
|------|------------|--|---------------------|---------|---|------|---|
| 1659 | 1820053047 | | BUD LIGHT 12/12 CAN | PREMIUM | 1 | Side | 2 |
| 1297 | 1820011047 | | BUD 12/12 CAN | PREMIUM | 1 | Side | 2 |
| 1307 | 1820011218 | | BUD 18/12 CAN | PREMIUM | 1 | Side | 1 |

Name: 3_4 W:22.00 in D:24.00 in Avail Space: 1.98 in Ht Space: 19.00 in

| ID | UPC | Barcode | Name | Category | HFacings | Orientation | Units |
|-------|------------|---------|-----------------------|----------|----------|-------------|-------|
| 1667 | 1820053218 | | BUD LIGHT 18/12 CAN | PREMIUM | 1 | Top 90 | 3 |
| 10352 | 7199030078 | | COORS LIGHT 18/12 BTL | PREMIUM | 1 | Side | 2 |
| 10348 | 7199030069 | | COORS LIGHT 12/12 BTL | PREMIUM | 1 | Side | 4 |

Name: 3_5 W:22.00 in D:24.00 in Avail Space: 1.30 in Ht Space: 22.00 in

| ID | UPC | Barcode | Name | Category | HFacings | Orientation | Units |
|-------|------------|---------|-----------------------|----------|----------|-------------|-------|
| 1292 | 1820011030 | | BUD 30/12 CAN | PREMIUM | 1 | Side | 4 |
| 10336 | 7199030030 | | COORS LIGHT 30/12 CAN | PREMIUM | 1 | Side | 4 |
| 10329 | 7199030017 | | COORS LIGHT 18/12 CAN | PREMIUM | 1 | Top 90 | 3 |

Name: 4_1 W:22.00 in D:24.00 in Avail Space: 1.40 in Ht Space: 12.00 in

| ID | UPC | Barcode | Name | Category | HFacings | Orientation | Units |
|-------|-------------|---------|-----------------------------|---------------|----------|-------------|-------|
| 9452 | 7089701331 | | FOSTERS 1/25.4 CAN | ABOVE PREMIUM | 1 | Front | 7 |
| 11327 | 7289000119 | | HEINEKEN 1/24 CAN | ABOVE PREMIUM | 1 | Front | 8 |
| 8113 | 6821309451 | | MOLSON ICE 1/24 CAN | ABOVE PREMIUM | 1 | Front | 8 |
| 15415 | 8066095643 | | CORONA 1/24 CAN | ABOVE PREMIUM | 1 | Front | 8 |
| 15431 | 8066095721 | | MODELO ESPECIAL 1/24 CAN | ABOVE PREMIUM | 1 | Front | 8 |
| 66064 | 61300874829 | | ARNOLD PALMER SPIKED HAL... | ABOVE PREMIUM | 1 | Side | 8 |



CVS # 8945 COLD

Address: 416 WASHINGTON AVE | City: KINGSTON | State: NY

Chain/StoreNumer: CVS - EAST 8945

Reset Name: 2019 SPRING

Planogram Name: 8945_4_DOOR_COLD

| | | | | | | | |
|------|-----------|--|-----------------------|---------------|---|-------|---|
| 2935 | 341000323 | | REDDS WICKED 1/24 CAN | ABOVE PREMIUM | 1 | Front | 8 |
|------|-----------|--|-----------------------|---------------|---|-------|---|

Name: 4_2 W:22.00 in D:24.00 in Avail Space: 1.96 in Ht Space: 10.00 in

| ID | UPC | Barcode | Name | Category | HFacings | Orientation | Units |
|-------|------------|---------|-------------------------------|---------------|----------|-------------|-------|
| 1546 | 1820025505 | | BUD LIGHT LIME STRAW-BER... | ABOVE PREMIUM | 1 | Front | 8 |
| 1521 | 1820025001 | | BUD LIGHT 1/25 CAN | PREMIUM | 1 | Front | 8 |
| 1520 | 1820025000 | | BUD 1/25 CAN | PREMIUM | 1 | Front | 8 |
| 10243 | 7199010071 | | COORS BANQUET 1/24 CAN | PREMIUM | 1 | Front | 8 |
| 2968 | 3410000355 | | LITE 1/24 CAN | PREMIUM | 1 | Front | 8 |
| 10412 | 7199047712 | | KEYSTONE ICE 1/24 CAN | ECONOMY | 1 | Front | 8 |
| 3128 | 3410000820 | | MILWAUKEES BEST ICE 1/24 C... | ECONOMY | 1 | Front | 8 |

Name: 4_3 W:22.00 in D:24.00 in Avail Space: 2.10 in Ht Space: 10.00 in

| ID | UPC | Barcode | Name | Category | HFacings | Orientation | Units |
|------|------------|---------|---------------------|----------|----------|-------------|-------|
| 3565 | 3410057509 | | LITE 12/12 BTL | PREMIUM | 1 | Side | 2 |
| 3198 | 3410001509 | | HIGH LIFE 12/12 BTL | ECONOMY | 1 | Side | 2 |
| 2763 | 3410000007 | | HIGH LIFE 6/16 CAN | ECONOMY | 1 | Side | 3 |

Name: 4_4 W:22.00 in D:24.00 in Avail Space: 2.05 in Ht Space: 19.00 in

| ID | UPC | Barcode | Name | Category | HFacings | Orientation | Units |
|-------|------------|---------|-------------------------|----------|----------|-------------|-------|
| 10164 | 7199000048 | | COORS LIGHT 12/12 CAN | PREMIUM | 1 | Side | 4 |
| 3579 | 3410057636 | | LITE 12/12 CAN | PREMIUM | 1 | Side | 4 |
| 66288 | 1820028443 | | NATURAL ICE 15/12 CAN | ECONOMY | 1 | Side | 2 |
| 61975 | 1820020077 | | NATURAL LIGHT 15/12 CAN | ECONOMY | 1 | Side | 2 |



CVS # 8945 COLD



Address: 416 WASHINGTON AVE | City: KINGSTON | State: NY

Chain/StoreNumber: CVS - EAST 8945

Reset Name: 2019 SPRING

Planogram Name: 8945_4_DOOR_COLD

Name: 4_5 W:22.00 in D:24.00 in Avail Space: 1.32 in Ht Space: 22.00 in

| ID | UPC | Barcode | Name | Category | HFacings | Orientation | Units |
|------|------------|--|-----------------------|----------|----------|-------------|-------|
| 3552 | 3410057340 |  0 34100 57340 9 | LITE 18/12 CAN | PREMIUM | 1 | Top 90 | 3 |
| 1681 | 1820061030 |  0 18200 61030 1 | BUSCH 30/12 CAN | ECONOMY | 1 | Side | 2 |
| 1712 | 1820086031 |  0 18200 86031 7 | BUSCH LIGHT 30/12 CAN | ECONOMY | 1 | Side | 2 |





CVS # 8945 WARM

Address: 416 WASHINGTON AVE | City: KINGSTON | State: NY

Chain/StoreNumer: CVS - EAST 8945

Reset Name: 2019 SPRING

Planogram Name: 8945_16ft_OPEN_WARM

Segment # 2 : 2_4 DEPTH: 12 In WIDTH: 192 In DISTANCE FROM TOP OF BASE SHELF TO BOTTOM OF SHELF:0.00 In

| POS | # FAC | UPC | NAME | CASES | CAPACITY | UNITS HIGH | Category |
|-----|-------|-------------|--|-------|----------|------------|---------------|
| 1 | 1 | 8769210014 | SAMUEL ADAMS BOSTON LAGER 12/12 BTL | 1.0 | 2 | 1 | ABOVE PREMIUM |
| 2 | 1 | 7199009554 | BLUE MOON BREWMASTER VARIETY 12/12 BTL | 1.0 | 2 | 1 | ABOVE PREMIUM |
| 3 | 1 | 63598512998 | MIKES HARD VARIETY PACK 12/11.2 BTL | 1.0 | 2 | 1 | ABOVE PREMIUM |
| 4 | 1 | 7289000016 | HEINEKEN 12/12 BTL | 1.0 | 2 | 1 | ABOVE PREMIUM |
| 5 | 1 | 7289000159 | HEINEKEN LIGHT 12/12 BTL | 1.0 | 2 | 1 | ABOVE PREMIUM |
| 6 | 1 | 8248812300 | BECKS 12/12 BTL | 1.0 | 2 | 1 | ABOVE PREMIUM |
| 1 | 1 | 8066095675 | CORONA LIGHT 12/12 BTL | 1.0 | 2 | 1 | ABOVE PREMIUM |
| 2 | 1 | 8066095615 | CORONA 12/12 BTL | 1.0 | 2 | 1 | ABOVE PREMIUM |
| 3 | 1 | 8066095680 | CORONA 18/12 BTL | 2.0 | 2 | 1 | ABOVE PREMIUM |
| 4 | 1 | 8066095757 | MODELO ESPECIAL 12/12 BTL | 2.0 | 4 | 1 | ABOVE PREMIUM |
| 5 | 1 | 8066095787 | MODELO NEGRA 12/12 BTL | 1.0 | 2 | 1 | ABOVE PREMIUM |
| 6 | 1 | 8066095315 | PACIFICO 12/12 BTL | 1.0 | 2 | 1 | ABOVE PREMIUM |
| 1 | 1 | 1820005990 | MICHELOB ULTRA 12/12 BTL | 1.0 | 2 | 1 | ABOVE PREMIUM |
| 2 | 1 | 1820096721 | MICHELOB ULTRA 18/12 CAN | 3.0 | 3 | 1 | ABOVE PREMIUM |
| 3 | 1 | 1820096550 | MICHELOB ULTRA 30/12 CAN | 1.0 | 1 | 1 | ABOVE PREMIUM |
| 4 | 1 | 1820053308 | BUD LIGHT 18/12 BTL | 2.0 | 2 | 1 | PREMIUM |
| 5 | 1 | 1820000769 | BUD LIGHT 12/12 BTL | 1.0 | 2 | 1 | PREMIUM |
| 6 | 1 | 1820053030 | BUD LIGHT 30/12 CAN | 2.0 | 2 | 1 | PREMIUM |
| 7 | 1 | 1820011030 | BUD 30/12 CAN | 2.0 | 2 | 1 | PREMIUM |
| 1 | 1 | 7199030030 | COORS LIGHT 30/12 CAN | 2.0 | 2 | 1 | PREMIUM |
| 2 | 1 | 7199030078 | COORS LIGHT 18/12 BTL | 2.0 | 2 | 1 | PREMIUM |
| 3 | 1 | 3410057341 | LITE 30/12 CAN | 2.0 | 2 | 1 | PREMIUM |
| 4 | 1 | 3410001509 | HIGH LIFE 12/12 BTL | 1.0 | 2 | 1 | ECONOMY |
| 5 | 1 | 1820086031 | BUSCH LIGHT 30/12 CAN | 2.0 | 2 | 1 | ECONOMY |
| 6 | 1 | 7143945712 | ROLLING ROCK 12/12 BTL | 1.0 | 2 | 1 | ECONOMY |

Segment # 2 : 2_3 DEPTH: 12 In WIDTH: 192 In DISTANCE FROM TOP OF BASE SHELF TO BOTTOM OF SHELF:22.00 In

| POS | # FAC | UPC | NAME | CASES | CAPACITY | UNITS HIGH | Category |
|-----|-------|-------------|------------------------------------|-------|----------|------------|---------------|
| 1 | 1 | 75452700161 | NEW BELGIUM FAT TIRE 12/12 CAN | 1.0 | 2 | 1 | ABOVE PREMIUM |
| 2 | 2 | 8769200424 | TRULY VARIETY PACK 12/12 CAN | 1.0 | 2 | 2 | ABOVE PREMIUM |
| 3 | 1 | 8769283134 | TWISTED TEA ORIGINAL 12/12 CAN | 1.0 | 2 | 1 | ABOVE PREMIUM |
| 4 | 1 | 7289000020 | HEINEKEN 12/12 CAN | 1.0 | 2 | 1 | ABOVE PREMIUM |
| 5 | 1 | 8066095621 | CORONA LIGHT 12/12 CAN | 0.5 | 1 | 1 | ABOVE PREMIUM |
| 6 | 1 | 8066095695 | CORONA 12/12 CAN | 1.0 | 2 | 1 | ABOVE PREMIUM |
| 1 | 1 | 8066095715 | MODELO ESPECIAL 12/12 CAN | 1.0 | 2 | 1 | ABOVE PREMIUM |
| 2 | 1 | 1820006991 | MICHELOB ULTRA 12/12 CAN | 0.5 | 1 | 1 | ABOVE PREMIUM |
| 3 | 2 | 1820020083 | MICHELOB ULTRA PURE GOLD 12/12 BTL | 1.0 | 2 | 2 | ABOVE PREMIUM |
| 4 | 1 | 1820015983 | BUD LIGHT LIME 12/12 CAN | 0.5 | 1 | 1 | ABOVE PREMIUM |
| 1 | 2 | 1820053218 | BUD LIGHT 18/12 CAN | 4.0 | 4 | 2 | PREMIUM |
| 2 | 2 | 1820008989 | BUD LIGHT 8/16 CAN | 1.3 | 4 | 2 | PREMIUM |
| 3 | 2 | 1820008981 | BUD 8/16 CAN | 0.7 | 2 | 2 | PREMIUM |
| 4 | 2 | 1820011218 | BUD 18/12 CAN | 4.0 | 4 | 2 | PREMIUM |
| 1 | 2 | 7199000048 | COORS LIGHT 12/12 CAN | 2.0 | 4 | 2 | PREMIUM |
| 2 | 2 | 3410057340 | LITE 18/12 CAN | 4.0 | 4 | 2 | PREMIUM |
| 3 | 1 | 2210000170 | PABST 12/12 CAN | 1.0 | 2 | 1 | ECONOMY |
| 4 | 1 | 1820020077 | NATURAL LIGHT 15/12 CAN | 1.0 | 2 | 1 | ECONOMY |

Segment # 2 : 2_2 DEPTH: 12 In WIDTH: 192 In DISTANCE FROM TOP OF BASE SHELF TO BOTTOM OF SHELF:34.00 In

| POS | # FAC | UPC | NAME | CASES | CAPACITY | UNITS HIGH | Category |
|-----|-------|-------------|-------------------------------|-------|----------|------------|---------------|
| 1 | 2 | 75452700022 | NEW BELGIUM FAT TIRE 6/12 BTL | 1.0 | 4 | 2 | ABOVE PREMIUM |



CVS # 8945 WARM

Address: 416 WASHINGTON AVE | City: KINGSTON | State: NY

Chain/StoreNumer: CVS - EAST 8945

Reset Name: 2019 SPRING

Planogram Name: 8945_16ft_OPEN_WARM

| | | | | | | | |
|---|---|-------------|---------------------------------|-----|---|---|---------------|
| 2 | 2 | 3410008716 | REDDS 6/12 BTL | 1.0 | 4 | 2 | ABOVE PREMIUM |
| 3 | 1 | 7289000011 | HEINEKEN 6/12 BTL | 0.5 | 2 | 1 | ABOVE PREMIUM |
| 4 | 2 | 7289000621 | HEINEKEN 0.0 NEAR BEER 6/12 BTL | 1.0 | 4 | 2 | ABOVE PREMIUM |
| 1 | 2 | 78615000001 | STELLA ARTOIS 6/11.2 BTL | 1.0 | 4 | 2 | ABOVE PREMIUM |
| 2 | 2 | 3354495041 | CORONA PREMIER 6/12 BTL | 1.0 | 4 | 2 | ABOVE PREMIUM |
| 3 | 1 | 8066095625 | CORONA LIGHT 6/12 BTL | 0.5 | 2 | 1 | ABOVE PREMIUM |
| 4 | 1 | 8066095605 | CORONA 6/12 BTL | 0.5 | 2 | 1 | ABOVE PREMIUM |
| 1 | 2 | 8992427896 | YUENGLING LAGER 12/12 BTL | 1.0 | 2 | 2 | PREMIUM |
| 2 | 1 | 1820053047 | BUD LIGHT 12/12 CAN | 1.0 | 2 | 1 | PREMIUM |
| 3 | 1 | 1820011047 | BUD 12/12 CAN | 1.0 | 2 | 1 | PREMIUM |
| 4 | 1 | 1820000771 | BUD 12/12 BTL | 0.5 | 1 | 1 | PREMIUM |
| 5 | 1 | 7199030120 | COORS LIGHT 3/24 CAN | 1.0 | 4 | 1 | PREMIUM |
| 1 | 1 | 7199030069 | COORS LIGHT 12/12 BTL | 0.5 | 1 | 1 | PREMIUM |
| 2 | 1 | 7199030017 | COORS LIGHT 18/12 CAN | 2.0 | 2 | 1 | PREMIUM |
| 3 | 1 | 3410057636 | LITE 12/12 CAN | 1.0 | 2 | 1 | PREMIUM |
| 4 | 1 | 3410057509 | LITE 12/12 BTL | 0.5 | 1 | 1 | PREMIUM |
| 5 | 1 | 3410001636 | HIGH LIFE 12/12 CAN | 1.0 | 2 | 1 | ECONOMY |
| 6 | 1 | 1820028443 | NATURAL ICE 15/12 CAN | 1.0 | 2 | 1 | ECONOMY |

Segment # 2 : 2_1 DEPTH: 12 In WIDTH: 192 In DISTANCE FROM TOP OF BASE SHELF TO BOTTOM OF SHELF:47.00 In

| POS | # FAC | UPC | NAME | CASES | CAPACITY | UNITS HIGH | Category |
|-----|-------|-------------|--|-------|----------|------------|---------------|
| 1 | 2 | 63848900029 | DOGFISH HEAD 60 MINUTE IPA 6/12 BTL | 1.0 | 4 | 2 | ABOVE PREMIUM |
| 2 | 1 | 81760601000 | CAPTAIN LAWRENCE FRESHCHESTER 6/12 BTL | 0.5 | 2 | 1 | ABOVE PREMIUM |
| 3 | 1 | 81760601020 | CAPTAIN LAWRENCE IPA 6/12 BTL | 0.5 | 2 | 1 | ABOVE PREMIUM |
| 4 | 1 | 7199009511 | BLUE MOON BELGIAN WHITE 6/12 BTL | 0.5 | 2 | 1 | ABOVE PREMIUM |
| 5 | 2 | 3410051605 | LEINIES SEASONAL SHANDY 6/12 BTL | 1.0 | 4 | 2 | ABOVE PREMIUM |
| 1 | 2 | 60690500830 | ITHACA FLOWER POWER 6/12 BTL | 1.0 | 4 | 2 | ABOVE PREMIUM |
| 2 | 1 | 8769210012 | SAMUEL ADAMS BOSTON LAGER 6/12 BTL | 0.5 | 2 | 1 | ABOVE PREMIUM |
| 3 | 1 | 8769230050 | SAMUEL ADAMS SEASONAL 6/12 BTL (A) | 0.5 | 2 | 1 | ABOVE PREMIUM |
| 4 | 1 | 1820013986 | SHOCK TOP BELGIAN WHITE 6/12 BTL | 0.5 | 2 | 1 | ABOVE PREMIUM |
| 1 | 2 | 63598510062 | MIKES HARD LEMONADE 6/11.2 BTL | 1.0 | 4 | 2 | ABOVE PREMIUM |
| 2 | 2 | 8769200660 | ANGRY ORCHARD ROSE 6/12 BTL | 1.0 | 4 | 2 | ABOVE PREMIUM |
| 3 | 2 | 7031001542 | PURA STILL BLACKBERRY 6/12 BTL | 1.0 | 4 | 2 | ABOVE PREMIUM |
| 4 | 2 | 8382012360 | GUINNESS DRAUGHT STOUT 4/14.9 CAN | 0.7 | 4 | 2 | ABOVE PREMIUM |
| 1 | 2 | 8382012393 | GUINNESS EXTRA STOUT 6/12 BTL | 1.0 | 4 | 2 | ABOVE PREMIUM |
| 2 | 1 | 8066095765 | MODELO ESPECIAL 6/12 BTL | 0.3 | 1 | 1 | ABOVE PREMIUM |
| 3 | 1 | 7231163012 | DOS EQUIS 6/12 BTL | 0.5 | 2 | 1 | ABOVE PREMIUM |
| 4 | 1 | 1820005989 | MICHELOB ULTRA 6/12 BTL | 0.5 | 2 | 1 | ABOVE PREMIUM |
| 5 | 2 | 7199030120 | COORS LIGHT 3/24 CAN | 0.5 | 2 | 2 | PREMIUM |

REVERSE VIEW (ONLY IF NEEDED)





CVS # 8945 WARM

Reset Timing 2019 SPRING

Address: 416 WASHINGTON AVE | City: KINGSTON | State: NY

REVERSE VIEW (ONLY IF NEEDED)

Segment:
1 of 4



Segment # 2 : 2_4 0.00 In

| POS | UPC | NAME |
|-----|-------------|---|
| 1 | 8769210014 | SAMUEL ADAMS BOSTON LAGER 12/ 12 BTL |
| 2 | 7199009554 | BLUE MOON BREWMASTER VARIETY 12/ 12 BTL |
| 3 | 63598512998 | MIKES HARD VARIETY PACK 12/ 11.2 BTL |
| 4 | 7289000016 | HEINEKEN 12/ 12 BTL |
| 5 | 7289000159 | HEINEKEN LIGHT 12/ 12 BTL |
| 6 | 8248812300 | BECKS 12/ 12 BTL |

Segment # 2 : 2_3 22.00 In

| POS | UPC | NAME |
|-----|-------------|---------------------------------|
| 1 | 75452700161 | NEW BELGIUM FAT TIRE 12/ 12 CAN |
| 2 | 8769200424 | TRULY VARIETY PACK 12/ 12 CAN |
| 3 | 8769283134 | TWISTED TEA ORIGINAL 12/ 12 CAN |
| 4 | 7289000020 | HEINEKEN 12/ 12 CAN |
| 5 | 8066095621 | CORONA LIGHT 12/ 12 CAN |
| 6 | 8066095695 | CORONA 12/ 12 CAN |

Segment # 2 : 2_2 34.00 In

| POS | UPC | NAME |
|-----|-------------|----------------------------------|
| 1 | 75452700022 | NEW BELGIUM FAT TIRE 6/ 12 BTL |
| 2 | 3410008716 | REDDS 6/ 12 BTL |
| 3 | 7289000011 | HEINEKEN 6/ 12 BTL |
| 4 | 7289000621 | HEINEKEN 0.0 NEAR BEER 6/ 12 BTL |

Segment # 2 : 2_1 47.00 In

| POS | UPC | NAME |
|-----|-------------|---|
| 1 | 63848900029 | DOGFISH HEAD 60 MINUTE IPA 6/ 12 BTL |
| 2 | 81760601000 | CAPTAIN LAWRENCE FRESHCHESTER 6/ 12 BTL |
| 3 | 81760601020 | CAPTAIN LAWRENCE IPA 6/ 12 BTL |
| 4 | 7199009511 | BLUE MOON BELGIAN WHITE 6/ 12 BTL |
| 5 | 3410051605 | LEINIES SEASONAL SHANDY 6/ 12 BTL |



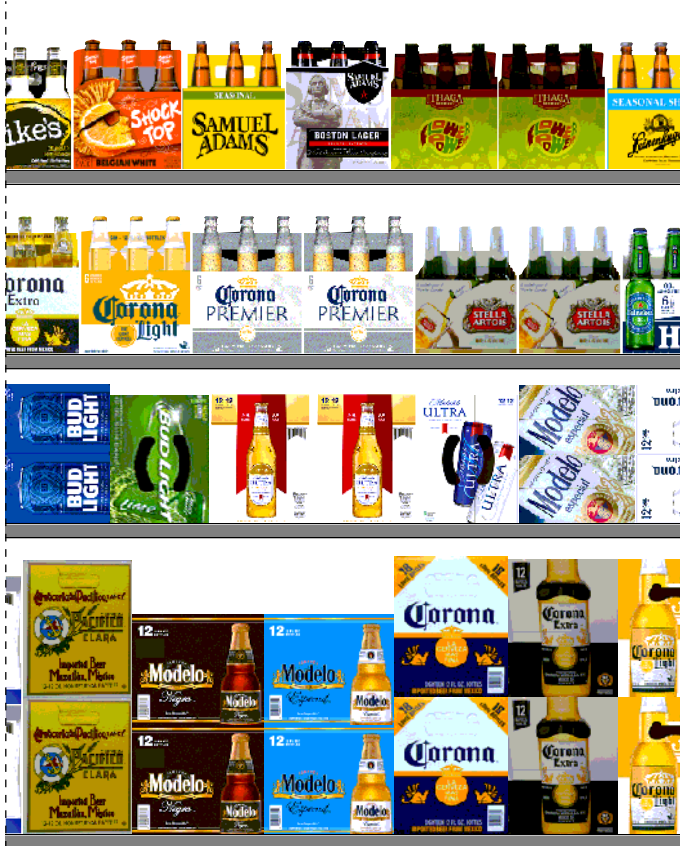
CVS # 8945 WARM

Reset Timing 2019 SPRING

Address: 416 WASHINGTON AVE | City: KINGSTON | State: NY

REVERSE VIEW (ONLY IF NEEDED)

Segment:
2 of 4



Segment # 2 : 2_4 0.00 In

| POS | UPC | NAME |
|-----|------------|----------------------------|
| 1 | 8066095675 | CORONA LIGHT 12/ 12 BTL |
| 2 | 8066095615 | CORONA 12/ 12 BTL |
| 3 | 8066095680 | CORONA 18/ 12 BTL |
| 4 | 8066095757 | MODELO ESPECIAL 12/ 12 BTL |
| 5 | 8066095787 | MODELO NEGRA 12/ 12 BTL |
| 6 | 8066095315 | PACIFICO 12/ 12 BTL |

Segment # 2 : 2_3 22.00 In

| POS | UPC | NAME |
|-----|------------|-------------------------------------|
| 1 | 8066095715 | MODELO ESPECIAL 12/ 12 CAN |
| 2 | 1820006991 | MICHELOB ULTRA 12/ 12 CAN |
| 3 | 1820020083 | MICHELOB ULTRA PURE GOLD 12/ 12 BTL |
| 4 | 1820015983 | BUD LIGHT LIME 12/ 12 CAN |

Segment # 2 : 2_2 34.00 In

| POS | UPC | NAME |
|-----|-------------|---------------------------|
| 1 | 78615000001 | STELLA ARTOIS 6/ 11.2 BTL |
| 2 | 3354495041 | CORONA PREMIER 6/ 12 BTL |
| 3 | 8066095625 | CORONA LIGHT 6/ 12 BTL |
| 4 | 8066095605 | CORONA 6/ 12 BTL |

Segment # 2 : 2_1 47.00 In

| POS | UPC | NAME |
|-----|-------------|-------------------------------------|
| 1 | 60690500830 | ITHACA FLOWER POWER 6/ 12 BTL |
| 2 | 8769210012 | SAMUEL ADAMS BOSTON LAGER 6/ 12 BTL |
| 3 | 8769230050 | SAMUEL ADAMS SEASONAL 6/ 12 BTL (A) |
| 4 | 1820013986 | SHOCK TOP BELGIAN WHITE 6/ 12 BTL |



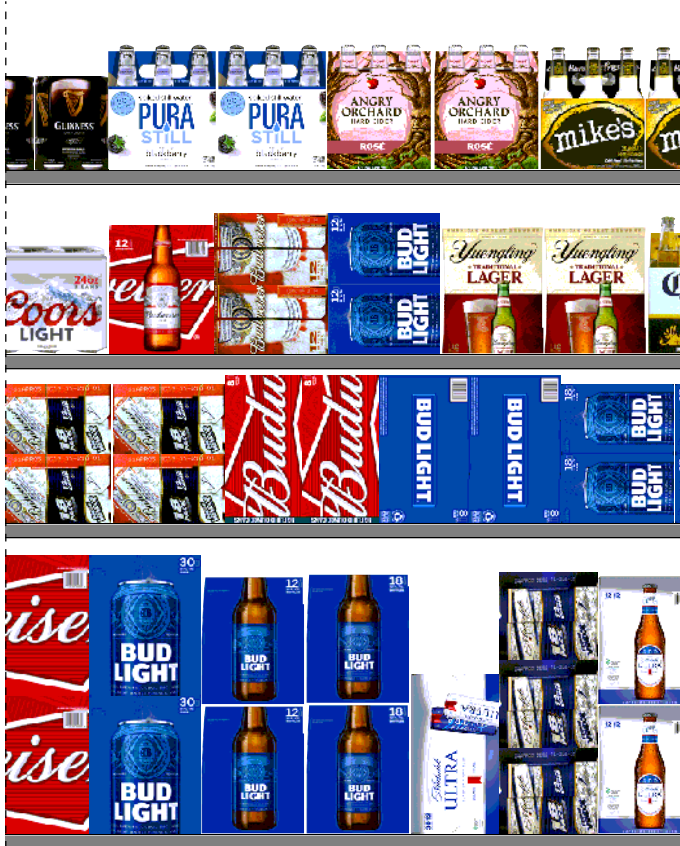
CVS # 8945 WARM

Reset Timing 2019 SPRING

Address: 416 WASHINGTON AVE | City: KINGSTON | State: NY

REVERSE VIEW (ONLY IF NEEDED)

Segment:
3 of 4



Segment # 2 : 2_4 0.00 In

| POS | UPC | NAME |
|-----|------------|---------------------------|
| 1 | 182005990 | MICHELOB ULTRA 12/ 12 BTL |
| 2 | 1820096721 | MICHELOB ULTRA 18/ 12 CAN |
| 3 | 1820096550 | MICHELOB ULTRA 30/ 12 CAN |
| 4 | 1820053308 | BUD LIGHT 18/ 12 BTL |
| 5 | 1820000769 | BUD LIGHT 12/ 12 BTL |
| 6 | 1820053030 | BUD LIGHT 30/ 12 CAN |
| 7 | 1820011030 | BUD 30/ 12 CAN |

Segment # 2 : 2_3 22.00 In

| POS | UPC | NAME |
|-----|------------|----------------------|
| 1 | 1820053218 | BUD LIGHT 18/ 12 CAN |
| 2 | 1820008989 | BUD LIGHT 8/ 16 CAN |
| 3 | 1820008981 | BUD 8/ 16 CAN |
| 4 | 1820011218 | BUD 18/ 12 CAN |

Segment # 2 : 2_2 34.00 In

| POS | UPC | NAME |
|-----|------------|----------------------------|
| 1 | 8992427896 | YUENGLING LAGER 12/ 12 BTL |
| 2 | 1820053047 | BUD LIGHT 12/ 12 CAN |
| 3 | 1820011047 | BUD 12/ 12 CAN |
| 4 | 1820000771 | BUD 12/ 12 BTL |
| 5 | 7199030120 | COORS LIGHT 3/ 24 CAN |

Segment # 2 : 2_1 47.00 In

| POS | UPC | NAME |
|-----|-------------|------------------------------------|
| 1 | 63598510062 | MIKES HARD LEMONADE 6/ 11.2 BTL |
| 2 | 8769200660 | ANGRY ORCHARD ROSE 6/ 12 BTL |
| 3 | 7031001542 | PURA STILL BLACKBERRY 6/ 12 BTL |
| 4 | 8382012360 | GUINNESS DRAUGHT STOUT 4/ 14.9 CAN |



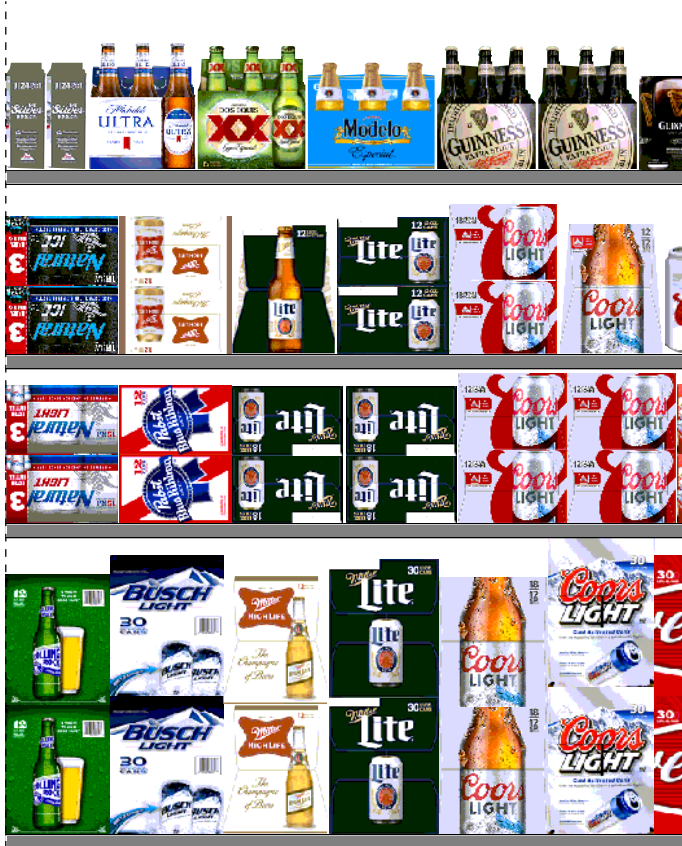
CVS # 8945 WARM

Reset Timing 2019 SPRING

Address: 416 WASHINGTON AVE | City: KINGSTON | State: NY

REVERSE VIEW (ONLY IF NEEDED)

Segment:
4 of 4



Segment # 2 : 2_4 0.00 In

| POS | UPC | NAME |
|-----|------------|-------------------------|
| 1 | 7199030030 | COORS LIGHT 30/ 12 CAN |
| 2 | 7199030078 | COORS LIGHT 18/ 12 BTL |
| 3 | 3410057341 | LITE 30/ 12 CAN |
| 4 | 3410001509 | HIGH LIFE 12/ 12 BTL |
| 5 | 1820086031 | BUSCH LIGHT 30/ 12 CAN |
| 6 | 7143945712 | ROLLING ROCK 12/ 12 BTL |

Segment # 2 : 2_3 22.00 In

| POS | UPC | NAME |
|-----|------------|--------------------------|
| 1 | 7199000048 | COORS LIGHT 12/ 12 CAN |
| 2 | 3410057340 | LITE 18/ 12 CAN |
| 3 | 2210000170 | PABST 12/ 12 CAN |
| 4 | 1820020077 | NATURAL LIGHT 15/ 12 CAN |

Segment # 2 : 2_2 34.00 In

| POS | UPC | NAME |
|-----|------------|------------------------|
| 1 | 7199030069 | COORS LIGHT 12/ 12 BTL |
| 2 | 7199030017 | COORS LIGHT 18/ 12 CAN |
| 3 | 3410057636 | LITE 12/ 12 CAN |
| 4 | 3410057509 | LITE 12/ 12 BTL |
| 5 | 3410001636 | HIGH LIFE 12/ 12 CAN |
| 6 | 1820028443 | NATURAL ICE 15/ 12 CAN |

Segment # 2 : 2_1 47.00 In

| POS | UPC | NAME |
|-----|------------|--------------------------------|
| 1 | 8382012393 | GUINNESS EXTRA STOUT 6/ 12 BTL |
| 2 | 8066095765 | MODELO ESPECIAL 6/ 12 BTL |
| 3 | 7231163012 | DOS EQUIS 6/ 12 BTL |
| 4 | 1820005989 | MICHELOB ULTRA 6/ 12 BTL |
| 5 | 7199030120 | COORS LIGHT 3/ 24 CAN |



CVS # 8945 WARM

Address: 416 WASHINGTON AVE | City: KINGSTON | State: NY

Chain/StoreNumer: CVS - EAST 8945

Reset Name: 2019 SPRING

Planogram Name: 8945_16ft_OPEN_WARM

CVS PHARMA... Store # 8945 H: 5 ft W: 16 ft D: 2 ft # of segments: 4

Name: 2_1 W:192.00 in D:12.00 in Avail Space: 1.27 in Ht Space: 12.00 in

| ID | UPC | Barcode | Name | Category | HFacings | Orientation | Units |
|-------|-------------|-----------------|-------------------------------|---------------|----------|-------------|-------|
| 6748 | 63848900029 | 6 38489 00029 9 | DOGFISH HEAD 60 MINUTE IPA... | ABOVE PREMIUM | 2 | Front | 4 |
| 15955 | 81760601000 | 8 17606 01000 1 | CAPTAIN LAWRENCE FRESHC... | ABOVE PREMIUM | 1 | Front | 2 |
| 15961 | 81760601020 | 8 17606 01020 9 | CAPTAIN LAWRENCE IPA 6/12 ... | ABOVE PREMIUM | 1 | Front | 2 |
| 10180 | 7199009511 | 0 71990 09511 6 | BLUE MOON BELGIAN WHITE 6... | ABOVE PREMIUM | 1 | Front | 2 |
| 3492 | 3410051605 | 0 34100 51605 5 | LEINIES SEASONAL SHANDY 6... | ABOVE PREMIUM | 2 | Front | 4 |
| 5177 | 60690500830 | 6 06905 00830 3 | ITHACA FLOWER POWER 6/12 ... | ABOVE PREMIUM | 2 | Front | 4 |
| 21956 | 8769210012 | 0 87692 10012 6 | SAMUEL ADAMS BOSTON LAG... | ABOVE PREMIUM | 1 | Front | 2 |
| 21995 | 8769230050 | 0 87692 30050 2 | SAMUEL ADAMS SEASONAL 6/... | ABOVE PREMIUM | 1 | Front | 2 |
| 1345 | 1820013986 | 0 18200 13986 4 | SHOCK TOP BELGIAN WHITE 6... | ABOVE PREMIUM | 1 | Front | 2 |
| 6413 | 63598510062 | 6 35985 10062 1 | MIKES HARD LEMONADE 6/11.... | ABOVE PREMIUM | 2 | Front | 4 |
| 65019 | 8769200660 | 0 87692 00660 2 | ANGRY ORCHARD ROSE 6/12 ... | ABOVE PREMIUM | 2 | Front | 4 |
| 89181 | 7031001542 | 0 70310 01542 1 | PURA STILL BLACKBERRY 6/12... | ABOVE PREMIUM | 2 | Front | 4 |
| 17293 | 8382012360 | 0 83820 12360 9 | GUINNESS DRAUGHT STOUT ... | ABOVE PREMIUM | 2 | Front | 4 |
| 17305 | 8382012393 | 0 83820 12393 7 | GUINNESS EXTRA STOUT 6/12... | ABOVE PREMIUM | 2 | Front | 4 |
| 15442 | 8066095765 | 0 80660 95765 4 | MODELO ESPECIAL 6/12 BTL | ABOVE PREMIUM | 1 | Front | 1 |
| 10813 | 7231163012 | 0 72311 63012 2 | DOS EQUIS 6/12 BTL | ABOVE PREMIUM | 1 | Front | 2 |



CVS # 8945 WARM

Address: 416 WASHINGTON AVE | City: KINGSTON | State: NY

Chain/StoreNumer: CVS - EAST 8945

Reset Name: 2019 SPRING

Planogram Name: 8945_16ft_OPEN_WARM

| | | | | | | | |
|-------|------------|--|-------------------------|---------------|---|-------|---|
| 1227 | 1820005989 | | MICHELOB ULTRA 6/12 BTL | ABOVE PREMIUM | 1 | Front | 2 |
| 10372 | 7199030120 | | COORS LIGHT 3/24 CAN | PREMIUM | 2 | Side | 2 |

Name: 2_2 W:192.00 in D:12.00 in Avail Space: 2.87 in Ht Space: 12.00 in

| ID | UPC | Barcode | Name | Category | HFacings | Orientation | Units |
|-------|-------------|---------|--------------------------------|---------------|----------|-------------|-------|
| 13009 | 75452700022 | | NEW BELGIUM FAT TIRE 6/12 B... | ABOVE PREMIUM | 2 | Front | 4 |
| 3255 | 3410008716 | | REDDS 6/12 BTL | ABOVE PREMIUM | 2 | Front | 4 |
| 11298 | 7289000011 | | HEINEKEN 6/12 BTL | ABOVE PREMIUM | 1 | Front | 2 |
| 89681 | 7289000621 | | HEINEKEN 0.0 NEAR BEER 6/12... | ABOVE PREMIUM | 2 | Front | 4 |
| 14089 | 78615000001 | | STELLA ARTOIS 6/11.2 BTL | ABOVE PREMIUM | 2 | Front | 4 |
| 44964 | 3354495041 | | CORONA PREMIER 6/12 BTL | ABOVE PREMIUM | 2 | Front | 4 |
| 15408 | 8066095625 | | CORONA LIGHT 6/12 BTL | ABOVE PREMIUM | 1 | Front | 2 |
| 15400 | 8066095605 | | CORONA 6/12 BTL | ABOVE PREMIUM | 1 | Front | 2 |
| 23902 | 8992427896 | | YUENGLING LAGER 12/12 BTL | PREMIUM | 2 | Side | 2 |
| 1659 | 1820053047 | | BUD LIGHT 12/12 CAN | PREMIUM | 1 | Side 90 | 2 |
| 1297 | 1820011047 | | BUD 12/12 CAN | PREMIUM | 1 | Side 90 | 2 |
| 1058 | 1820000771 | | BUD 12/12 BTL | PREMIUM | 1 | Side | 1 |
| 10372 | 7199030120 | | COORS LIGHT 3/24 CAN | PREMIUM | 1 | Front | 4 |
| 10348 | 7199030069 | | COORS LIGHT 12/12 BTL | PREMIUM | 1 | Side | 1 |
| 10329 | 7199030017 | | COORS LIGHT 18/12 CAN | PREMIUM | 1 | Side 90 | 2 |



CVS # 8945 WARM

Address: 416 WASHINGTON AVE | City: KINGSTON | State: NY

Chain/StoreNumer: CVS - EAST 8945

Reset Name: 2019 SPRING

Planogram Name: 8945_16ft_OPEN_WARM

| | | | | | | | |
|-------|------------|--|-----------------------|---------|---|---------|---|
| 3579 | 3410057636 | | LITE 12/12 CAN | PREMIUM | 1 | Side 90 | 2 |
| 3565 | 3410057509 | | LITE 12/12 BTL | PREMIUM | 1 | Side | 1 |
| 3202 | 3410001636 | | HIGH LIFE 12/12 CAN | ECONOMY | 1 | Side 90 | 2 |
| 66288 | 1820028443 | | NATURAL ICE 15/12 CAN | ECONOMY | 1 | Side 90 | 2 |

Name: 2_3 W:192.00 in D:12.00 in Avail Space: 3.80 in Ht Space: 11.00 in

| ID | UPC | Barcode | Name | Category | HFacings | Orientation | Units |
|-------|-------------|---------|--------------------------------|---------------|----------|-------------|-------|
| 13037 | 75452700161 | | NEW BELGIUM FAT TIRE 12/12 ... | ABOVE PREMIUM | 1 | Side 90 | 2 |
| 43031 | 8769200424 | | TRULY VARIETY PACK 12/12 C... | ABOVE PREMIUM | 2 | Front 90 | 2 |
| 22096 | 8769283134 | | TWISTED TEA ORIGINAL 12/12 ... | ABOVE PREMIUM | 1 | Side 90 | 2 |
| 11301 | 7289000020 | | HEINEKEN 12/12 CAN | ABOVE PREMIUM | 1 | Side 90 | 2 |
| 15406 | 8066095621 | | CORONA LIGHT 12/12 CAN | ABOVE PREMIUM | 1 | Top 90 | 1 |
| 15426 | 8066095695 | | CORONA 12/12 CAN | ABOVE PREMIUM | 1 | Side 90 | 2 |
| 15429 | 8066095715 | | MODELO ESPECIAL 12/12 CAN | ABOVE PREMIUM | 1 | Side 90 | 2 |
| 1241 | 1820006991 | | MICHELOB ULTRA 12/12 CAN | ABOVE PREMIUM | 1 | Top 90 | 1 |
| 65828 | 1820020083 | | MICHELOB ULTRA PURE GOLD... | ABOVE PREMIUM | 2 | Side | 2 |
| 1378 | 1820015983 | | BUD LIGHT LIME 12/12 CAN | ABOVE PREMIUM | 1 | Top 90 | 1 |
| 1667 | 1820053218 | | BUD LIGHT 18/12 CAN | PREMIUM | 2 | Side 90 | 4 |
| 1262 | 1820008989 | | BUD LIGHT 8/16 CAN | PREMIUM | 2 | Top 90 | 4 |
| 1256 | 1820008981 | | BUD 8/16 CAN | PREMIUM | 2 | Front 90 | 2 |



CVS # 8945 WARM

Address: 416 WASHINGTON AVE | City: KINGSTON | State: NY

Chain/StoreNumer: CVS - EAST 8945

Reset Name: 2019 SPRING

Planogram Name: 8945_16ft_OPEN_WARM

| | | | | | | | |
|-------|------------|--|-------------------------|---------|---|---------|---|
| 1307 | 1820011218 | | BUD 18/12 CAN | PREMIUM | 2 | Side 90 | 4 |
| 10164 | 7199000048 | | COORS LIGHT 12/12 CAN | PREMIUM | 2 | Side 90 | 4 |
| 3552 | 3410057340 | | LITE 18/12 CAN | PREMIUM | 2 | Side 90 | 4 |
| 2241 | 2210000170 | | PABST 12/12 CAN | ECONOMY | 1 | Side 90 | 2 |
| 61975 | 1820020077 | | NATURAL LIGHT 15/12 CAN | ECONOMY | 1 | Side 90 | 2 |

Name: 2_4 W:192.00 in D:12.00 in Avail Space: 1.57 in Ht Space: 21.00 in

| ID | UPC | Barcode | Name | Category | HFacings | Orientation | Units |
|-------|-------------|---------|------------------------------|---------------|----------|-------------|-------|
| 21957 | 8769210014 | | SAMUEL ADAMS BOSTON LAG... | ABOVE PREMIUM | 1 | Side | 2 |
| 10202 | 7199009554 | | BLUE MOON BREWMASTER V... | ABOVE PREMIUM | 1 | Side | 2 |
| 6433 | 63598512998 | | MIKES HARD VARIETY PACK 1... | ABOVE PREMIUM | 1 | Side | 2 |
| 11300 | 7289000016 | | HEINEKEN 12/12 BTL | ABOVE PREMIUM | 1 | Side | 2 |
| 11342 | 7289000159 | | HEINEKEN LIGHT 12/12 BTL | ABOVE PREMIUM | 1 | Side | 2 |
| 16691 | 8248812300 | | BECKS 12/12 BTL | ABOVE PREMIUM | 1 | Side | 2 |
| 15416 | 8066095675 | | CORONA LIGHT 12/12 BTL | ABOVE PREMIUM | 1 | Side | 2 |
| 15403 | 8066095615 | | CORONA 12/12 BTL | ABOVE PREMIUM | 1 | Side | 2 |
| 15417 | 8066095680 | | CORONA 18/12 BTL | ABOVE PREMIUM | 1 | Side | 2 |
| 15436 | 8066095757 | | MODELO ESPECIAL 12/12 BTL | ABOVE PREMIUM | 1 | Side | 4 |
| 15449 | 8066095787 | | MODELO NEGRA 12/12 BTL | ABOVE PREMIUM | 1 | Side | 2 |
| 15390 | 8066095315 | | PACIFICO 12/12 BTL | ABOVE PREMIUM | 1 | Side | 2 |



CVS # 8945 WARM

Address: 416 WASHINGTON AVE | City: KINGSTON | State: NY

Chain/StoreNumer: CVS - EAST 8945

Reset Name: 2019 SPRING

Planogram Name: 8945_16ft_OPEN_WARM

| | | | | | | | |
|-------|------------|--|--------------------------|---------------|---|---------|---|
| 1228 | 1820005990 | | MICHELOB ULTRA 12/12 BTL | ABOVE PREMIUM | 1 | Side | 2 |
| 1850 | 1820096721 | | MICHELOB ULTRA 18/12 CAN | ABOVE PREMIUM | 1 | Side 90 | 3 |
| 1823 | 1820096550 | | MICHELOB ULTRA 30/12 CAN | ABOVE PREMIUM | 1 | Side | 1 |
| 1670 | 1820053308 | | BUD LIGHT 18/12 BTL | PREMIUM | 1 | Side | 2 |
| 1056 | 1820000769 | | BUD LIGHT 12/12 BTL | PREMIUM | 1 | Side | 2 |
| 1656 | 1820053030 | | BUD LIGHT 30/12 CAN | PREMIUM | 1 | Side | 2 |
| 1292 | 1820011030 | | BUD 30/12 CAN | PREMIUM | 1 | Side | 2 |
| 10336 | 7199030030 | | COORS LIGHT 30/12 CAN | PREMIUM | 1 | Side | 2 |
| 10352 | 7199030078 | | COORS LIGHT 18/12 BTL | PREMIUM | 1 | Side | 2 |
| 3553 | 3410057341 | | LITE 30/12 CAN | PREMIUM | 1 | Side | 2 |
| 3198 | 3410001509 | | HIGH LIFE 12/12 BTL | ECONOMY | 1 | Side | 2 |
| 1712 | 1820086031 | | BUSCH LIGHT 30/12 CAN | ECONOMY | 1 | Side | 2 |
| 9905 | 7143945712 | | ROLLING ROCK 12/12 BTL | ECONOMY | 1 | Side | 2 |