





CVS # 555 COLD

Address: 308 BROADWAY | City: BETHPAGE | State: NY

Chain/StoreNumer: CVS - EAST 555

Reset Name: 2019 SPRING

Planogram Name: 555_2_DOOR_COLD

Segment # 1 : 1_4 DEPTH: 22 In WIDTH: 23 In DISTANCE FROM TOP OF BASE SHELF TO BOTTOM OF SHELF:0.00 In

POS	# FAC	UPC	NAME	CASES	CAPACITY	UNITS HIGH	Category
1	1	7289000016	HEINEKEN 12/12 BTL	2.0	4	1	ABOVE PREMIUM
2	1	8066095615	CORONA 12/12 BTL	2.0	4	1	ABOVE PREMIUM
3	1	8066095675	CORONA LIGHT 12/12 BTL	2.0	4	1	ABOVE PREMIUM

Segment # 1 : 1_3 DEPTH: 22 In WIDTH: 23 In DISTANCE FROM TOP OF BASE SHELF TO BOTTOM OF SHELF:21.00 In

POS	# FAC	UPC	NAME	CASES	CAPACITY	UNITS HIGH	Category
1	1	7289000159	HEINEKEN LIGHT 12/12 BTL	1.0	2	1	ABOVE PREMIUM
2	1	7289000020	HEINEKEN 12/12 CAN	1.0	2	1	ABOVE PREMIUM
3	1	8066095695	CORONA 12/12 CAN	1.0	2	1	ABOVE PREMIUM
4	1	8066095715	MODELO ESPECIAL 12/12 CAN	1.0	2	1	ABOVE PREMIUM

Segment # 1 : 1_2 DEPTH: 22 In WIDTH: 23 In DISTANCE FROM TOP OF BASE SHELF TO BOTTOM OF SHELF:31.00 In

POS	# FAC	UPC	NAME	CASES	CAPACITY	UNITS HIGH	Category
1	1	78615000014	STELLA ARTOIS 12/11.2 BTL	1.0	2	1	ABOVE PREMIUM
2	1	3354495042	CORONA PREMIER 12/12 BTL	1.0	2	1	ABOVE PREMIUM
3	1	3354400013	CORONA REFRESCA VARIETY 12/12 CAN	1.5	3	1	ABOVE PREMIUM

Segment # 1 : 1_1 DEPTH: 22 In WIDTH: 23 In DISTANCE FROM TOP OF BASE SHELF TO BOTTOM OF SHELF:42.00 In

POS	# FAC	UPC	NAME	CASES	CAPACITY	UNITS HIGH	Category
1	1	7199009511	BLUE MOON BELGIAN WHITE 6/12 BTL	0.5	2	1	ABOVE PREMIUM
2	1	8066095605	CORONA 6/12 BTL	0.5	2	1	ABOVE PREMIUM
3	1	3410051681	CAPE LINE VARIETY PACK 12/12 CAN	1.5	3	1	ABOVE PREMIUM
4	1	63598554890	WHITE CLAW VARIETY PACK 12/12 CAN	1.5	3	1	ABOVE PREMIUM

Segment # 2 : 2_4 DEPTH: 22 In WIDTH: 23 In DISTANCE FROM TOP OF BASE SHELF TO BOTTOM OF SHELF:0.00 In

POS	# FAC	UPC	NAME	CASES	CAPACITY	UNITS HIGH	Category
1	1	1820053218	BUD LIGHT 18/12 CAN	2.0	2	1	PREMIUM
2	1	1820011218	BUD 18/12 CAN	2.0	2	1	PREMIUM
3	1	7199030017	COORS LIGHT 18/12 CAN	2.0	2	1	PREMIUM
4	1	3410057340	LITE 18/12 CAN	2.0	2	1	PREMIUM

Segment # 2 : 2_3 DEPTH: 22 In WIDTH: 23 In DISTANCE FROM TOP OF BASE SHELF TO BOTTOM OF SHELF:17.00 In

POS	# FAC	UPC	NAME	CASES	CAPACITY	UNITS HIGH	Category
1	1	1820053047	BUD LIGHT 12/12 CAN	1.0	2	1	PREMIUM
2	1	1820011047	BUD 12/12 CAN	1.0	2	1	PREMIUM
3	1	7199030069	COORS LIGHT 12/12 BTL	1.0	2	1	PREMIUM
4	1	3410057636	LITE 12/12 CAN	1.0	2	1	PREMIUM

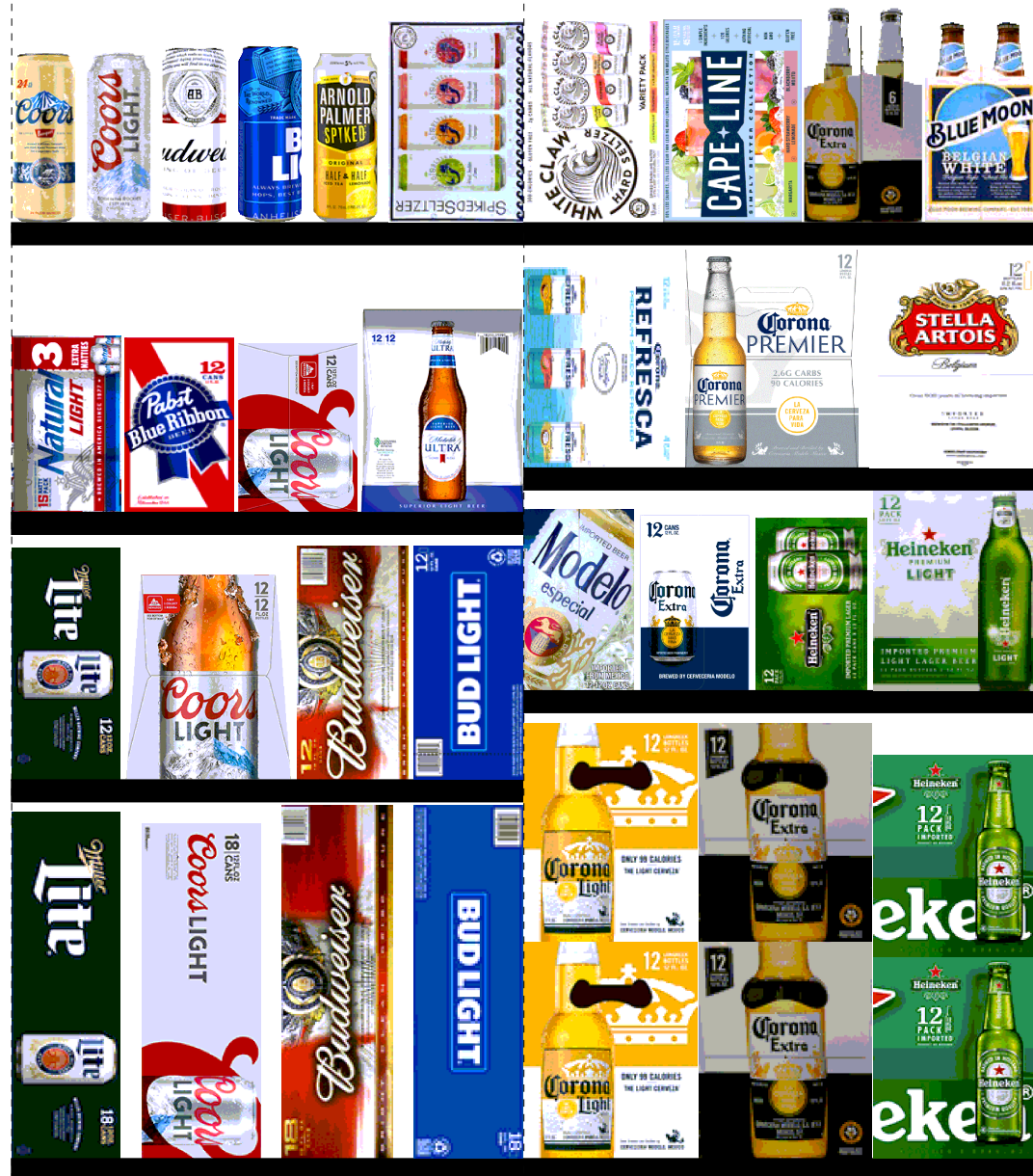
Segment # 2 : 2_2 DEPTH: 22 In WIDTH: 23 In DISTANCE FROM TOP OF BASE SHELF TO BOTTOM OF SHELF:29.00 In

POS	# FAC	UPC	NAME	CASES	CAPACITY	UNITS HIGH	Category
1	1	1820005990	MICHELOB ULTRA 12/12 BTL	1.0	2	1	ABOVE PREMIUM
2	1	7199000048	COORS LIGHT 12/12 CAN	1.0	2	1	PREMIUM
3	1	2210000170	PABST 12/12 CAN	1.0	2	1	ECONOMY
4	1	1820020077	NATURAL LIGHT 15/12 CAN	0.5	1	1	ECONOMY

Segment # 2 : 2_1 DEPTH: 22 In WIDTH: 23 In DISTANCE FROM TOP OF BASE SHELF TO BOTTOM OF SHELF:42.00 In

POS	# FAC	UPC	NAME	CASES	CAPACITY	UNITS HIGH	Category
1	1	85389700227	BON AND VIV SPIKED SELTZER VARIETY 12/12 CAN	1.5	3	1	ABOVE PREMIUM
2	1	61300874829	ARNOLD PALMER SPIKED HALF AND HALF 1/24 CAN	0.6	7	1	ABOVE PREMIUM
3	1	1820025001	BUD LIGHT 1/25 CAN	0.5	7	1	PREMIUM
4	1	1820025000	BUD 1/25 CAN	0.5	7	1	PREMIUM
5	1	7199030065	COORS LIGHT 1/24 CAN	0.6	7	1	PREMIUM
6	1	7199010071	COORS BANQUET 1/24 CAN	0.6	7	1	PREMIUM

REVERSE VIEW (ONLY IF NEEDED)





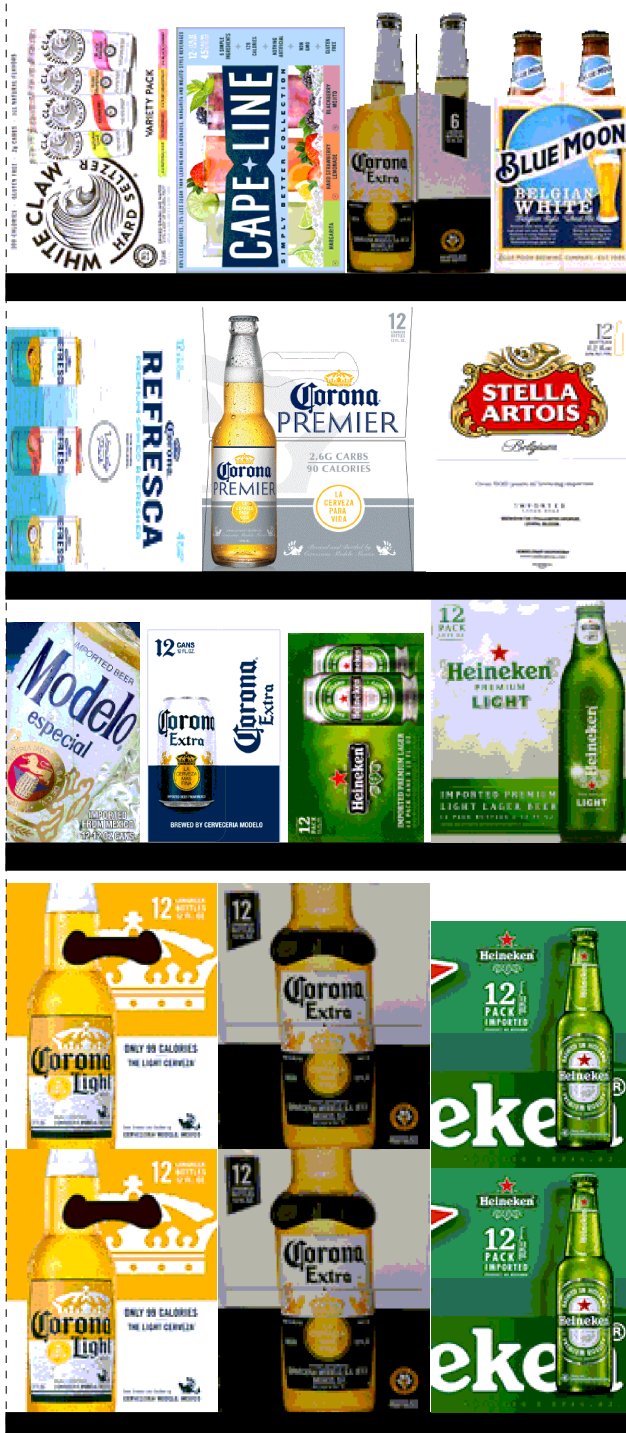
CVS # 555 COLD

Reset Timing 2019 SPRING

Address: 308 BROADWAY | City: BETHPAGE | State: NY

REVERSE VIEW (ONLY IF NEEDED)

Segment:
1 of 2



Segment # 1 : 1_4 0.00 In

POS	UPC	NAME
1	7289000016	HEINEKEN 12/12 BTL
2	8066095615	CORONA 12/12 BTL
3	8066095675	CORONA LIGHT 12/12 BTL

Segment # 1 : 1_3 21.00 In

POS	UPC	NAME
1	7289000159	HEINEKEN LIGHT 12/12 BTL
2	7289000020	HEINEKEN 12/12 CAN
3	8066095695	CORONA 12/12 CAN
4	8066095715	MODELO ESPECIAL 12/12 CAN

Segment # 1 : 1_2 31.00 In

POS	UPC	NAME
1	78615000014	STELLA ARTOIS 12/11.2 BTL
2	3354495042	CORONA PREMIER 12/12 BTL
3	3354400013	CORONA REFRESCA VARIETY 12/12 CAN

Segment # 1 : 1_1 42.00 In

POS	UPC	NAME
1	7199009511	BLUE MOON BELGIAN WHITE 6/12 BTL
2	8066095605	CORONA 6/12 BTL
3	3410051681	CAPE LINE VARIETY PACK 12/12 CAN
4	63598554890	WHITE CLAW VARIETY PACK 12/12 CAN



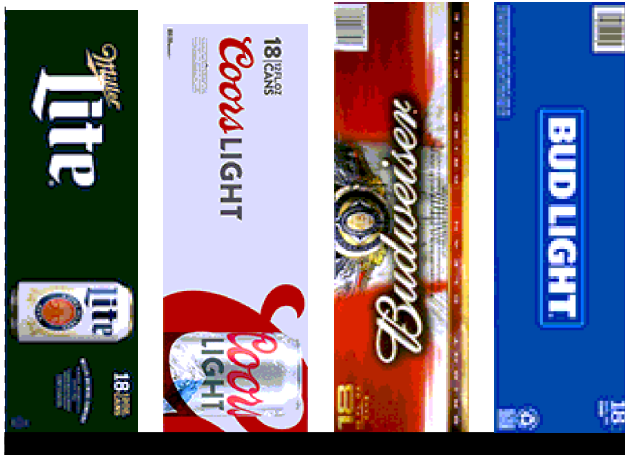
CVS # 555 COLD

Reset Timing 2019 SPRING

Address: 308 BROADWAY | City: BETHPAGE | State: NY

REVERSE VIEW (ONLY IF NEEDED)

Segment:
2 of 2



Segment # 2 : 2_4 0.00 In

POS	UPC	NAME
1	1820053218	BUD LIGHT 18/12 CAN
2	1820011218	BUD 18/12 CAN
3	7199030017	COORS LIGHT 18/12 CAN
4	3410057340	LITE 18/12 CAN

Segment # 2 : 2_3 17.00 In

POS	UPC	NAME
1	1820053047	BUD LIGHT 12/12 CAN
2	1820011047	BUD 12/12 CAN
3	7199030069	COORS LIGHT 12/12 BTL
4	3410057636	LITE 12/12 CAN

Segment # 2 : 2_2 29.00 In

POS	UPC	NAME
1	1820005990	MICHELOB ULTRA 12/12 BTL
2	7199000048	COORS LIGHT 12/12 CAN
3	2210000170	PABST 12/12 CAN
4	1820020077	NATURAL LIGHT 15/12 CAN

Segment # 2 : 2_1 42.00 In

POS	UPC	NAME
1	85389700227	BON AND VIV SPIKED SELTZER VARIETY 12/12 CAN
2	61300874829	ARNOLD PALMER SPIKED HALF AND HALF 1/24 CAN
3	1820025001	BUD LIGHT 1/25 CAN
4	1820025000	BUD 1/25 CAN
5	7199030065	COORS LIGHT 1/24 CAN
6	7199010071	COORS BANQUET 1/24 CAN



CVS # 555 COLD

Address: 308 BROADWAY | City: BETHPAGE | State: NY

Chain/StoreNumer: CVS - EAST 555

Reset Name: 2019 SPRING

Planogram Name: 555_2_DOOR_COLD

CVS PHARMA... Store # 555 | H: 4 ft 5.00 in | W: 3 ft 10.00 in | D: 1 ft 10.00 in | # of segments: 2

Name: 1_1		W:23.00 in	D:22.00 in	Avail Space: 0.35 in	Ht Space: 10.00 in			
ID	UPC	Barcode	Name	Category	HFacings	Orientation	Units	
10180	7199009511	#71990-AJFBBg	BLUE MOON BELGIAN WHITE 6/1...	ABOVE PREMIUM	1	Side	2	
15400	8066095605	#80660-JFCAFd	CORONA 6/12 BTL	ABOVE PREMIUM	1	Side	2	
86788	3410051681	#34100-FBCIBj	CAPE LINE VARIETY PACK 12/12 ...	ABOVE PREMIUM	1	Front 90	3	
45151	63598554890) 35985-FEIJAE	WHITE CLAW VARIETY PACK 12/...	ABOVE PREMIUM	1	Front 90	3	

Name: 1_2		W:23.00 in	D:22.00 in	Avail Space: 1.00 in	Ht Space: 10.00 in			
ID	UPC	Barcode	Name	Category	HFacings	Orientation	Units	
14094	78615000014	* 86150-AAABEe	STELLA ARTOIS 12/11.2 BTL	ABOVE PREMIUM	1	Side	2	
44952	3354495042	#33544-JFAECf	CORONA PREMIER 12/12 BTL	ABOVE PREMIUM	1	Side	2	
86777	3354400013	#33544-AAABDh	CORONA REFRESCA VARIETY 1...	ABOVE PREMIUM	1	Top 90	3	

Name: 1_3		W:23.00 in	D:22.00 in	Avail Space: 0.90 in	Ht Space: 9.00 in			
ID	UPC	Barcode	Name	Category	HFacings	Orientation	Units	
11342	7289000159	#72890-AAABEJh	HEINEKEN LIGHT 12/12 BTL	ABOVE PREMIUM	1	Side	2	
11301	7289000020	#72890-AAACAa	HEINEKEN 12/12 CAN	ABOVE PREMIUM	1	Side	2	
15426	8066095695	#80660-JFGJFe	CORONA 12/12 CAN	ABOVE PREMIUM	1	Side	2	
15429	8066095715	#80660-JFHBFj	MODELO ESPECIAL 12/12 CAN	ABOVE PREMIUM	1	Side	2	

Name: 1_4		W:23.00 in	D:22.00 in	Avail Space: 0.16 in	Ht Space: 20.00 in			
ID	UPC	Barcode	Name	Category	HFacings	Orientation	Units	
11300	7289000016	#72890-AAABGd	HEINEKEN 12/12 BTL	ABOVE PREMIUM	1	Side	4	
15403	8066095615	#80660-JFCBFc	CORONA 12/12 BTL	ABOVE PREMIUM	1	Side	4	
15416	8066095675	#80660-JFGHfg	CORONA LIGHT 12/12 BTL	ABOVE PREMIUM	1	Side	4	

Name: 2_1		W:23.00 in	D:22.00 in	Avail Space: 2.60 in	Ht Space: 10.00 in			
ID	UPC	Barcode	Name	Category	HFacings	Orientation	Units	
19178	85389700227	+ 53897-AAACChb	BON AND VIV SPIKED SELTZER ...	ABOVE PREMIUM	1	Front 90	3	
66064	61300874829) 13008-HEICJg	ARNOLD PALMER SPIKED HALF ...	ABOVE PREMIUM	1	Front	7	



CVS # 555 COLD

Address: 308 BROADWAY | City: BETHPAGE | State: NY

Chain/StoreNumer: CVS - EAST 555

Reset Name: 2019 SPRING

Planogram Name: 555_2_DOOR_COLD

1521	1820025001	#18200-CFABj	BUD LIGHT 1/25 CAN	PREMIUM	1	Front	7
1520	1820025000	#18200-CFAAC	BUD 1/25 CAN	PREMIUM	1	Front	7
10346	7199030065	#71990-DAGFe	COORS LIGHT 1/24 CAN	PREMIUM	1	Front	7
10243	7199010071	#71990-BAABb	COORS BANQUET 1/24 CAN	PREMIUM	1	Front	7

Name: 2_2		W:23.00 in	D:22.00 in	Avail Space: 0.56 in	Ht Space: 12.00 in		
ID	UPC	Barcode	Name	Category	HFacings	Orientation	Units
1228	1820005990	#18200-AFJAC	MICHELOB ULTRA 12/12 BTL	ABOVE PREMIUM	1	Side	2
10164	7199000048	#71990-AAEIg	COORS LIGHT 12/12 CAN	PREMIUM	1	Side	2
2241	2210000170	#22100-ABABb	PABST 12/12 CAN	ECONOMY	1	Side	2
61975	1820020077	#18200-CAAHj	NATURAL LIGHT 15/12 CAN	ECONOMY	1	Side	1

Name: 2_3		W:23.00 in	D:22.00 in	Avail Space: 0.84 in	Ht Space: 11.00 in		
ID	UPC	Barcode	Name	Category	HFacings	Orientation	Units
1659	1820053047	#18200-FDAEHa	BUD LIGHT 12/12 CAN	PREMIUM	1	Top 90	2
1297	1820011047	#18200-BBAEHe	BUD 12/12 CAN	PREMIUM	1	Top 90	2
10348	7199030069	#71990-DAGJc	COORS LIGHT 12/12 BTL	PREMIUM	1	Side	2
3579	3410057636	#34100-FHDCd	LITE 12/12 CAN	PREMIUM	1	Top 90	2

Name: 2_4		W:23.00 in	D:22.00 in	Avail Space: 2.92 in	Ht Space: 16.00 in		
ID	UPC	Barcode	Name	Category	HFacings	Orientation	Units
1667	1820053218	#18200-FDCBIe	BUD LIGHT 18/12 CAN	PREMIUM	1	Top 90	2
1307	1820011218	#18200-BBCBIi	BUD 18/12 CAN	PREMIUM	1	Top 90	2
10329	7199030017	#71990-DABHd	COORS LIGHT 18/12 CAN	PREMIUM	1	Top 90	2
3552	3410057340	#34100-FHDEAj	LITE 18/12 CAN	PREMIUM	1	Top 90	2