





CVS # 390 COLD

Address: 751 HAWKINS AVE | City: RONKONKOMA | State: NY

Chain/StoreNumer: CVS - EAST 390

Reset Name: 2019 SPRING

Planogram Name: 390_2_DOOR_COLD

Segment # 1 : 1_4 DEPTH: 22 In WIDTH: 23 In DISTANCE FROM TOP OF BASE SHELF TO BOTTOM OF SHELF:0.00 In

POS #	FAC	UPC	NAME	CASES	CAPACITY	UNITS HIGH	Category
2	1	7289000159	HEINEKEN LIGHT 12/12 BTL	1.0	2	1	ABOVE PREMIUM
1	1	7289000016	HEINEKEN 12/12 BTL	1.0	2	1	ABOVE PREMIUM
3	1	7289000020	HEINEKEN 12/12 CAN	2.0	4	1	ABOVE PREMIUM
4	1	8066095615	CORONA 12/12 BTL	2.0	4	1	ABOVE PREMIUM

Segment # 1 : 1_3 DEPTH: 22 In WIDTH: 23 In DISTANCE FROM TOP OF BASE SHELF TO BOTTOM OF SHELF:21.00 In

POS #	FAC	UPC	NAME	CASES	CAPACITY	UNITS HIGH	Category
1	1	78615000014	STELLA ARTOIS 12/11.2 BTL	1.0	2	1	ABOVE PREMIUM
2	1	8066095675	CORONA LIGHT 12/12 BTL	1.0	2	1	ABOVE PREMIUM
3	1	8066095605	CORONA 6/12 BTL	0.5	2	1	ABOVE PREMIUM

Segment # 1 : 1_2 DEPTH: 22 In WIDTH: 23 In DISTANCE FROM TOP OF BASE SHELF TO BOTTOM OF SHELF:32.00 In

POS #	FAC	UPC	NAME	CASES	CAPACITY	UNITS HIGH	Category
1	1	3354495042	CORONA PREMIER 12/12 BTL	1.0	2	1	ABOVE PREMIUM
2	1	8066095757	MODELO ESPECIAL 12/12 BTL	0.5	1	1	ABOVE PREMIUM
3	1	85389700227	BON AND VIV SPIKED SELTZER VARIETY 12/12 CAN	1.5	3	1	ABOVE PREMIUM

Segment # 1 : 1_1 DEPTH: 22 In WIDTH: 23 In DISTANCE FROM TOP OF BASE SHELF TO BOTTOM OF SHELF:43.00 In

POS #	FAC	UPC	NAME	CASES	CAPACITY	UNITS HIGH	Category
1	1	7199009511	BLUE MOON BELGIAN WHITE 6/12 BTL	0.5	2	1	ABOVE PREMIUM
2	1	8769230050	SAMUEL ADAMS SEASONAL 6/12 BTL (A)	0.8	3	1	ABOVE PREMIUM
3	1	3354400013	CORONA REFRESCA VARIETY 12/12 CAN	1.0	2	1	ABOVE PREMIUM
4	1	63598554890	WHITE CLAW VARIETY PACK 12/12 CAN	1.0	2	1	ABOVE PREMIUM

Segment # 2 : 2_4 DEPTH: 22 In WIDTH: 23 In DISTANCE FROM TOP OF BASE SHELF TO BOTTOM OF SHELF:0.00 In

POS #	FAC	UPC	NAME	CASES	CAPACITY	UNITS HIGH	Category
1	1	1820053218	BUD LIGHT 18/12 CAN	2.0	2	1	PREMIUM
2	1	1820011218	BUD 18/12 CAN	2.0	2	1	PREMIUM
3	1	7199030017	COORS LIGHT 18/12 CAN	2.0	2	1	PREMIUM
4	1	3410057340	LITE 18/12 CAN	2.0	2	1	PREMIUM

Segment # 2 : 2_3 DEPTH: 22 In WIDTH: 23 In DISTANCE FROM TOP OF BASE SHELF TO BOTTOM OF SHELF:18.00 In

POS #	FAC	UPC	NAME	CASES	CAPACITY	UNITS HIGH	Category
1	1	1820053047	BUD LIGHT 12/12 CAN	1.0	2	1	PREMIUM
2	1	1820011047	BUD 12/12 CAN	1.0	2	1	PREMIUM
3	1	7199000048	COORS LIGHT 12/12 CAN	1.0	2	1	PREMIUM
4	1	3410057636	LITE 12/12 CAN	1.0	2	1	PREMIUM

Segment # 2 : 2_2 DEPTH: 22 In WIDTH: 23 In DISTANCE FROM TOP OF BASE SHELF TO BOTTOM OF SHELF:30.00 In

POS #	FAC	UPC	NAME	CASES	CAPACITY	UNITS HIGH	Category
1	1	1820000769	BUD LIGHT 12/12 BTL	1.0	2	1	PREMIUM
2	1	7199030069	COORS LIGHT 12/12 BTL	1.0	2	1	PREMIUM



CVS # 390 COLD

Address: 751 HAWKINS AVE | City: RONKONKOMA | State: NY

Chain/StoreNumber: CVS - EAST 390

Reset Name: 2019 SPRING

Planogram Name: 390_2_DOOR_COLD

3 1 3410001509 HIGH LIFE 12/12 BTL 1.0 2 1 ECONOMY

Segment # 2 : 2_1 DEPTH: 22 In WIDTH: 23 In DISTANCE FROM TOP OF BASE SHELF TO BOTTOM OF SHELF:42.00 In

POS	# FAC	UPC	NAME	CASES	CAPACITY	UNITS HIGH	Category
1	1	61300874829	ARNOLD PALMER SPIKED HALF AND HALF 1/24 CAN	0.6	7	1	ABOVE PREMIUM
2	1	8066095643	CORONA 1/24 CAN	0.6	7	1	ABOVE PREMIUM
3	1	1820025000	BUD 1/25 CAN	0.5	7	1	PREMIUM
4	1	3410000355	LITE 1/24 CAN	0.6	7	1	PREMIUM
5	1	7199030065	COORS LIGHT 1/24 CAN	0.6	7	1	PREMIUM
6	1	7199010071	COORS BANQUET 1/24 CAN	0.6	7	1	PREMIUM
7	1	1820025008	NATURAL ICE 1/25 CAN	0.6	7	1	ECONOMY
8	1	1820025013	NATTY DADDY 1/25 CAN	0.6	7	1	ECONOMY

REVERSE VIEW (ONLY IF NEEDED)





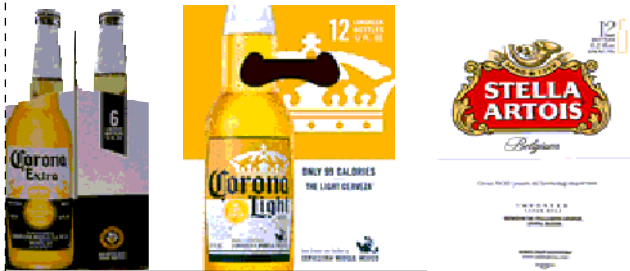
CVS # 390 COLD

Reset Timing 2019 SPRING

Address: 751 HAWKINS AVE | City: RONKONKOMA | State: NY

REVERSE VIEW (ONLY IF NEEDED)

Segment:
1 of 2



Segment # 1 : 1_4 0.00 In

POS	UPC	NAME
2	7289000159	HEINEKEN LIGHT 12/ 12 BTL
1	7289000016	HEINEKEN 12/ 12 BTL
3	7289000020	HEINEKEN 12/ 12 CAN
4	8066095615	CORONA 12/ 12 BTL

Segment # 1 : 1_3 21.00 In

POS	UPC	NAME
1	78615000014	STELLA ARTOIS 12/ 11.2 BTL
2	8066095675	CORONA LIGHT 12/ 12 BTL
3	8066095605	CORONA 6/ 12 BTL

Segment # 1 : 1_2 32.00 In

POS	UPC	NAME
1	3354495042	CORONA PREMIER 12/ 12 BTL
2	8066095757	MODELO ESPECIAL 12/ 12 BTL
3	85389700227	BON AND VIV SPIKED SELTZER VARIETY 12/ 12 CAN

Segment # 1 : 1_1 43.00 In

POS	UPC	NAME
1	7199009511	BLUE MOON BELGIAN WHITE 6/ 12 BTL
2	8769230050	SAMUEL ADAMS SEASONAL 6/ 12 BTL (A)
3	3354400013	CORONA REFRESCA VARIETY 12/ 12 CAN
4	63598554890	WHITE CLAW VARIETY PACK 12/ 12 CAN



CVS # 390 COLD

Reset Timing 2019 SPRING

Address: 751 HAWKINS AVE | City: RONKONKOMA | State: NY

REVERSE VIEW (ONLY IF NEEDED)

Segment:
2 of 2



Segment # 2 : 2_4 0.00 In

POS	UPC	NAME
1	1820053218	BUD LIGHT 18/ 12 CAN
2	1820011218	BUD 18/ 12 CAN
3	7199030017	COORS LIGHT 18/ 12 CAN
4	3410057340	LITE 18/ 12 CAN

Segment # 2 : 2_3 18.00 In

POS	UPC	NAME
1	1820053047	BUD LIGHT 12/ 12 CAN
2	1820011047	BUD 12/ 12 CAN
3	7199000048	COORS LIGHT 12/ 12 CAN
4	3410057636	LITE 12/ 12 CAN

Segment # 2 : 2_2 30.00 In

POS	UPC	NAME
1	1820000769	BUD LIGHT 12/ 12 BTL
2	7199030069	COORS LIGHT 12/ 12 BTL
3	3410001509	HIGH LIFE 12/ 12 BTL

Segment # 2 : 2_1 42.00 In

POS	UPC	NAME
1	61300874829	ARNOLD PALMER SPIKED HALF AND HALF 1/24 CAN
2	8066095643	CORONA 1/24 CAN
3	1820025000	BUD 1/25 CAN
4	3410000355	LITE 1/24 CAN
5	7199030065	COORS LIGHT 1/24 CAN
6	7199010071	COORS BANQUET 1/24 CAN
7	1820025008	NATURAL ICE 1/25 CAN
8	1820025013	NATTY DADDY 1/25 CAN



CVS # 390 COLD

Address: 751 HAWKINS AVE | City: RONKONKOMA | State: NY

Chain/StoreNumer: CVS - EAST 390

Reset Name: 2019 SPRING

Planogram Name: 390_2_DOOR_COLD

CVS PHARMA... Store # 390 H: 4 ft 5.00 in W: 3 ft 10.00 in D: 1 ft 10.00 in # of segments: 2

Name: 1_1 W:23.00 in D:22.00 in Avail Space: 0.76 in Ht Space: 9.00 in

ID	UPC	Barcode	Name	Category	HFacings	Orientation	Units
10180	7199009511	0 71990 09511 6	BLUE MOON BELGIAN WHITE 6...	ABOVE PREMIUM	1	Side	2
21995	8769230050	0 87692 30050 2	SAMUEL ADAMS SEASONAL 6/...	ABOVE PREMIUM	1	Side	3
86777	3354400013	0 33544 00013 7	CORONA REFRESCA VARIETY...	ABOVE PREMIUM	1	Side 90	2
45151	63598554890	6 35985 54890 4	WHITE CLAW VARIETY PACK 1...	ABOVE PREMIUM	1	Side 90	2

Name: 1_2 W:23.00 in D:22.00 in Avail Space: 1.40 in Ht Space: 10.00 in

ID	UPC	Barcode	Name	Category	HFacings	Orientation	Units
44952	3354495042	0 33544 95042 5	CORONA PREMIER 12/12 BTL	ABOVE PREMIUM	1	Side	2
15436	8066095757	0 80660 95757 9	MODELO ESPECIAL 12/12 BTL	ABOVE PREMIUM	1	Side 90	1
19178	85389700227	8 53897 00227 1	BON AND VIV SPIKED SELTZE...	ABOVE PREMIUM	1	Front 90	3

Name: 1_3 W:23.00 in D:22.00 in Avail Space: 2.44 in Ht Space: 10.00 in

ID	UPC	Barcode	Name	Category	HFacings	Orientation	Units
14094	78615000014	7 86150 00014 4	STELLA ARTOIS 12/11.2 BTL	ABOVE PREMIUM	1	Side	2
15416	8066095675	0 80660 95675 6	CORONA LIGHT 12/12 BTL	ABOVE PREMIUM	1	Side	2
15400	8066095605	0 80660 95605 3	CORONA 6/12 BTL	ABOVE PREMIUM	1	Side	2

Name: 1_4 W:23.00 in D:22.00 in Avail Space: 0.70 in Ht Space: 19.00 in

ID	UPC	Barcode	Name	Category	HFacings	Orientation	Units
11342	7289000159	0 72890 00159 7	HEINEKEN LIGHT 12/12 BTL	ABOVE PREMIUM	1	Side	2
11300	7289000016	0 72890 00016 3	HEINEKEN 12/12 BTL	ABOVE PREMIUM	1	Side	2
11301	7289000020	0 72890 00020 0	HEINEKEN 12/12 CAN	ABOVE PREMIUM	1	Side	4
15403	8066095615	0 80660 95615 2	CORONA 12/12 BTL	ABOVE PREMIUM	1	Top	4



CVS # 390 COLD

Address: 751 HAWKINS AVE | City: RONKONKOMA | State: NY

Chain/StoreNumer: CVS - EAST 390

Reset Name: 2019 SPRING

Planogram Name: 390_2_DOOR_COLD

Name: 2_1		W:23.00 in	D:22.00 in	Avail Space: 0.06 in		Ht Space: 10.00 in	
ID	UPC	Barcode	Name	Category	HFacings	Orientation	Units
66064	61300874829		ARNOLD PALMER SPIKED HAL...	ABOVE PREMIUM	1	Front	7
15415	8066095643		CORONA 1/24 CAN	ABOVE PREMIUM	1	Front	7
1520	1820025000		BUD 1/25 CAN	PREMIUM	1	Front	7
2968	3410000355		LITE 1/24 CAN	PREMIUM	1	Front	7
10346	7199030065		COORS LIGHT 1/24 CAN	PREMIUM	1	Front	7
10243	7199010071		COORS BANQUET 1/24 CAN	PREMIUM	1	Front	7
1528	1820025008		NATURAL ICE 1/25 CAN	ECONOMY	1	Front	7
1533	1820025013		NATTY DADDY 1/25 CAN	ECONOMY	1	Front	7

Name: 2_2		W:23.00 in	D:22.00 in	Avail Space: 0.85 in		Ht Space: 11.00 in	
ID	UPC	Barcode	Name	Category	HFacings	Orientation	Units
1056	1820000769		BUD LIGHT 12/12 BTL	PREMIUM	1	Side	2
10348	7199030069		COORS LIGHT 12/12 BTL	PREMIUM	1	Side	2
3198	3410001509		HIGH LIFE 12/12 BTL	ECONOMY	1	Side	2

Name: 2_3		W:23.00 in	D:22.00 in	Avail Space: 2.93 in		Ht Space: 11.00 in	
ID	UPC	Barcode	Name	Category	HFacings	Orientation	Units
1659	1820053047		BUD LIGHT 12/12 CAN	PREMIUM	1	Top 90	2
1297	1820011047		BUD 12/12 CAN	PREMIUM	1	Top 90	2
10164	7199000048		COORS LIGHT 12/12 CAN	PREMIUM	1	Top 90	2
3579	3410057636		LITE 12/12 CAN	PREMIUM	1	Top 90	2



CVS # 390 COLD





Address: 751 HAWKINS AVE | City: RONKONKOMA | State: NY

Chain/StoreNumer: CVS - EAST 390

Reset Name: 2019 SPRING

Planogram Name: 390_2_DOOR_COLD

Name: 2_4 W:23.00 in D:22.00 in Avail Space: 2.92 in Ht Space: 16.00 in

ID	UPC	Barcode	Name	Category	HFacings	Orientation	Units
1667	1820053218	 0 18200 53218 4	BUD LIGHT 18/12 CAN	PREMIUM	1	Top 90	2
1307	1820011218	 0 18200 11218 8	BUD 18/12 CAN	PREMIUM	1	Top 90	2
10329	7199030017	 0 71990 30017 3	COORS LIGHT 18/12 CAN	PREMIUM	1	Top 90	2
3552	3410057340	 0 34100 57340 9	LITE 18/12 CAN	PREMIUM	1	Top 90	2