



CVS # 5446 COLD

Address: 2000 JERICHO TPKE | City: EAST NORTHPORT | State: NY

Chain/StoreNumer: CVS - EAST 5446

Reset Name: 2019 SPRING

Planogram Name: 5446\_2\_DOOR\_COLD

Segment # 1 : 1\_5 DEPTH: 22 In WIDTH: 22 In DISTANCE FROM TOP OF BASE SHELF TO BOTTOM OF SHELF:0.00 In

| POS # | FAC | UPC         | NAME   | CASES | CAPACITY | UNITS HIGH | Category      |
|-------|-----|-------------|--|-------|----------|------------|---------------|
| 1     | 1   | 7289000016  | HEINEKEN 12/12 BTL                           | 2.0   | 4        | 1          | ABOVE PREMIUM |
| 2     | 1   | 8066095615  | CORONA 12/12 BTL                             | 2.0   | 4        | 1          | ABOVE PREMIUM |
| 3     | 1   | 85389700227 | BON AND VIV SPIKED SELTZER VARIETY 12/12 CAN | 3.0   | 6        | 1          | ABOVE PREMIUM |

Segment # 1 : 1\_4 DEPTH: 22 In WIDTH: 22 In DISTANCE FROM TOP OF BASE SHELF TO BOTTOM OF SHELF:21.00 In

| POS # | FAC | UPC        | NAME                              | CASES | CAPACITY | UNITS HIGH | Category      |
|-------|-----|------------|-----------------------------------|-------|----------|------------|---------------|
| 1     | 1   | 7289000016 | HEINEKEN 12/12 BTL                | 2.0   | 4        | 1          | ABOVE PREMIUM |
| 3     | 1   | 3354495042 | CORONA PREMIER 12/12 BTL          | 1.0   | 2        | 1          | ABOVE PREMIUM |
| 2     | 1   | 8066095675 | CORONA LIGHT 12/12 BTL            | 1.0   | 2        | 1          | ABOVE PREMIUM |
| 4     | 1   | 3354400013 | CORONA REFRESCA VARIETY 12/12 CAN | 2.0   | 4        | 1          | ABOVE PREMIUM |

Segment # 1 : 1\_3 DEPTH: 22 In WIDTH: 22 In DISTANCE FROM TOP OF BASE SHELF TO BOTTOM OF SHELF:42.00 In

| POS # | FAC | UPC         | NAME                      | CASES | CAPACITY | UNITS HIGH | Category      |
|-------|-----|-------------|---------------------------|-------|----------|------------|---------------|
| 1     | 1   | 7289000020  | HEINEKEN 12/12 CAN        | 1.0   | 2        | 1          | ABOVE PREMIUM |
| 2     | 1   | 7289000159  | HEINEKEN LIGHT 12/12 BTL  | 1.0   | 2        | 1          | ABOVE PREMIUM |
| 3     | 1   | 78615000014 | STELLA ARTOIS 12/11.2 BTL | 1.0   | 2        | 1          | ABOVE PREMIUM |

Segment # 1 : 1\_2 DEPTH: 22 In WIDTH: 22 In DISTANCE FROM TOP OF BASE SHELF TO BOTTOM OF SHELF:54.00 In

| POS # | FAC | UPC         | NAME                              | CASES | CAPACITY | UNITS HIGH | Category      |
|-------|-----|-------------|-----------------------------------|-------|----------|------------|---------------|
| 1     | 1   | 8066095757  | MODELO ESPECIAL 12/12 BTL         | 1.0   | 2        | 1          | ABOVE PREMIUM |
| 2     | 1   | 3410051681  | CAPE LINE VARIETY PACK 12/12 CAN  | 1.0   | 2        | 1          | ABOVE PREMIUM |
| 3     | 1   | 63598554890 | WHITE CLAW VARIETY PACK 12/12 CAN | 1.0   | 2        | 1          | ABOVE PREMIUM |

Segment # 1 : 1\_1 DEPTH: 22 In WIDTH: 22 In DISTANCE FROM TOP OF BASE SHELF TO BOTTOM OF SHELF:66.00 In

| POS # | FAC | UPC        | NAME                               | CASES | CAPACITY | UNITS HIGH | Category      |
|-------|-----|------------|------------------------------------|-------|----------|------------|---------------|
| 1     | 1   | 8769282102 | ANGRY ORCHARD CRISP APPLE 6/12 BTL | 1.0   | 4        | 1          | ABOVE PREMIUM |
| 2     | 1   | 8066095695 | CORONA 12/12 CAN                   | 1.0   | 2        | 1          | ABOVE PREMIUM |
| 3     | 1   | 8066095605 | CORONA 6/12 BTL                    | 1.0   | 4        | 1          | ABOVE PREMIUM |

Segment # 2 : 2\_5 DEPTH: 22 In WIDTH: 22 In DISTANCE FROM TOP OF BASE SHELF TO BOTTOM OF SHELF:0.00 In

| POS # | FAC | UPC        | NAME                    | CASES | CAPACITY | UNITS HIGH | Category |
|-------|-----|------------|-------------------------|-------|----------|------------|----------|
| 1     | 1   | 1820053218 | BUD LIGHT 18/12 CAN     | 2.0   | 2        | 1          | PREMIUM  |
| 2     | 1   | 1820011218 | BUD 18/12 CAN           | 2.0   | 2        | 1          | PREMIUM  |
| 3     | 1   | 7199030017 | COORS LIGHT 18/12 CAN   | 2.0   | 2        | 1          | PREMIUM  |
| 5     | 1   | 1820028443 | NATURAL ICE 15/12 CAN   | 0.5   | 1        | 1          | ECONOMY  |
| 4     | 1   | 1820020077 | NATURAL LIGHT 15/12 CAN | 0.5   | 1        | 1          | ECONOMY  |

Segment # 2 : 2\_4 DEPTH: 22 In WIDTH: 22 In DISTANCE FROM TOP OF BASE SHELF TO BOTTOM OF SHELF:21.00 In

| POS # | FAC | UPC        | NAME                  | CASES | CAPACITY | UNITS HIGH | Category |
|-------|-----|------------|-----------------------|-------|----------|------------|----------|
| 1     | 1   | 1820053047 | BUD LIGHT 12/12 CAN   | 2.0   | 4        | 1          | PREMIUM  |
| 2     | 1   | 1820011047 | BUD 12/12 CAN         | 2.0   | 4        | 1          | PREMIUM  |
| 3     | 1   | 7199000048 | COORS LIGHT 12/12 CAN | 2.0   | 4        | 1          | PREMIUM  |



CVS # 5446 COLD

Address: 2000 JERICHO TPKE | City: EAST NORTHPORT | State: NY

Chain/StoreNumer: CVS - EAST 5446

Reset Name: 2019 SPRING

Planogram Name: 5446\_2\_DOOR\_COLD

4 1 3410057340 LITE 18/12 CAN 2.0 2 1 PREMIUM

Segment # 2 : 2\_3 DEPTH: 22 In WIDTH: 22 In DISTANCE FROM TOP OF BASE SHELF TO BOTTOM OF SHELF:41.00 In

| POS # | FAC | UPC        | NAME                      | CASES | CAPACITY | UNITS HIGH | Category      |
|-------|-----|------------|---------------------------|-------|----------|------------|---------------|
| 1     | 1   | 8066095715 | MODELO ESPECIAL 12/12 CAN | 1.0   | 2        | 1          | ABOVE PREMIUM |
| 2     | 1   | 1820000769 | BUD LIGHT 12/12 BTL       | 1.0   | 2        | 1          | PREMIUM       |
| 3     | 1   | 3410057636 | LITE 12/12 CAN            | 1.0   | 2        | 1          | PREMIUM       |
| 4     | 1   | 2210000170 | PABST 12/12 CAN           | 1.0   | 2        | 1          | ECONOMY       |

Segment # 2 : 2\_2 DEPTH: 22 In WIDTH: 22 In DISTANCE FROM TOP OF BASE SHELF TO BOTTOM OF SHELF:54.00 In

| POS # | FAC | UPC        | NAME                               | CASES | CAPACITY | UNITS HIGH | Category      |
|-------|-----|------------|------------------------------------|-------|----------|------------|---------------|
| 1     | 1   | 8769210012 | SAMUEL ADAMS BOSTON LAGER 6/12 BTL | 0.8   | 3        | 1          | ABOVE PREMIUM |
| 2     | 1   | 7199009511 | BLUE MOON BELGIAN WHITE 6/12 BTL   | 0.5   | 2        | 1          | ABOVE PREMIUM |
| 3     | 1   | 8769230050 | SAMUEL ADAMS SEASONAL 6/12 BTL (A) | 0.8   | 3        | 1          | ABOVE PREMIUM |
| 4     | 1   | 3410001509 | HIGH LIFE 12/12 BTL                | 1.0   | 2        | 1          | ECONOMY       |

Segment # 2 : 2\_1 DEPTH: 22 In WIDTH: 22 In DISTANCE FROM TOP OF BASE SHELF TO BOTTOM OF SHELF:66.00 In

| POS # | FAC | UPC         | NAME  | CASES | CAPACITY | UNITS HIGH | Category      |
|-------|-----|-------------|---|-------|----------|------------|---------------|
| 1     | 1   | 7199010071  | COORS BANQUET 1/24 CAN                      | 0.6   | 7        | 1          | PREMIUM       |
| 2     | 1   | 7199030065  | COORS LIGHT 1/24 CAN                        | 0.6   | 7        | 1          | PREMIUM       |
| 3     | 1   | 1820025001  | BUD LIGHT 1/25 CAN                          | 0.5   | 7        | 1          | PREMIUM       |
| 4     | 1   | 1820025000  | BUD 1/25 CAN                                | 0.5   | 7        | 1          | PREMIUM       |
| 5     | 1   | 8066095643  | CORONA 1/24 CAN                             | 0.6   | 7        | 1          | ABOVE PREMIUM |
| 6     | 1   | 61300874829 | ARNOLD PALMER SPIKED HALF AND HALF 1/24 CAN | 0.6   | 7        | 1          | ABOVE PREMIUM |
| 7     | 1   | 7089701331  | FOSTERS 1/25.4 CAN                          | 0.5   | 6        | 1          | ABOVE PREMIUM |

# REVERSE VIEW (ONLY IF NEEDED)





CVS # 5446 COLD

Reset Timing 2019 SPRING

Address: 2000 JERICHO TPKE | City: EAST NORTHPORT | State: NY

**REVERSE VIEW (ONLY IF NEEDED)**

Segment:  
1 of 2



**Segment # 1 : 1\_5 0.00 In**

| POS | UPC         | NAME  |
|-----|-------------|---|
| 1   | 7289000016  | HEINEKEN 12/ 12 BTL                           |
| 2   | 8066095615  | CORONA 12/ 12 BTL                             |
| 3   | 85389700227 | BON AND VIV SPIKED SELTZER VARIETY 12/ 12 CAN |

**Segment # 1 : 1\_4 21.00 In**

| POS | UPC        | NAME                               |
|-----|------------|------------------------------------|
| 1   | 7289000016 | HEINEKEN 12/ 12 BTL                |
| 3   | 3354495042 | CORONA PREMIER 12/ 12 BTL          |
| 2   | 8066095675 | CORONA LIGHT 12/ 12 BTL            |
| 4   | 3354400013 | CORONA REFRESCA VARIETY 12/ 12 CAN |

**Segment # 1 : 1\_3 42.00 In**

| POS | UPC         | NAME                       |
|-----|-------------|----------------------------|
| 1   | 7289000020  | HEINEKEN 12/ 12 CAN        |
| 2   | 7289000159  | HEINEKEN LIGHT 12/ 12 BTL  |
| 3   | 78615000014 | STELLA ARTOIS 12/ 11.2 BTL |

**Segment # 1 : 1\_2 54.00 In**

| POS | UPC         | NAME                               |
|-----|-------------|------------------------------------|
| 1   | 8066095757  | MODELO ESPECIAL 12/ 12 BTL         |
| 2   | 3410051681  | CAPE LINE VARIETY PACK 12/ 12 CAN  |
| 3   | 63598554890 | WHITE CLAW VARIETY PACK 12/ 12 CAN |

**Segment # 1 : 1\_1 66.00 In**

| POS | UPC        | NAME                                |
|-----|------------|-------------------------------------|
| 1   | 8769282102 | ANGRY ORCHARD CRISP APPLE 6/ 12 BTL |
| 2   | 8066095695 | CORONA 12/ 12 CAN                   |
| 3   | 8066095605 | CORONA 6/ 12 BTL                    |



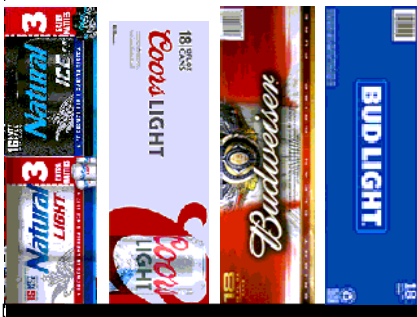
CVS # 5446 COLD

Reset Timing 2019 SPRING

Address: 2000 JERICHO TPKE | City: EAST NORTHPORT | State: NY

**REVERSE VIEW (ONLY IF NEEDED)**

Segment:  
2 of 2



**Segment # 2 : 2\_5 0.00 In**

| POS | UPC        | NAME                     |
|-----|------------|--------------------------|
| 1   | 1820053218 | BUD LIGHT 18/ 12 CAN     |
| 2   | 1820011218 | BUD 18/ 12 CAN           |
| 3   | 7199030017 | COORS LIGHT 18/ 12 CAN   |
| 5   | 1820028443 | NATURAL ICE 15/ 12 CAN   |
| 4   | 1820020077 | NATURAL LIGHT 15/ 12 CAN |

**Segment # 2 : 2\_4 21.00 In**

| POS | UPC        | NAME                   |
|-----|------------|------------------------|
| 1   | 1820053047 | BUD LIGHT 12/ 12 CAN   |
| 2   | 1820011047 | BUD 12/ 12 CAN         |
| 3   | 7199000048 | COORS LIGHT 12/ 12 CAN |
| 4   | 3410057340 | LITE 18/ 12 CAN        |

**Segment # 2 : 2\_3 41.00 In**

| POS | UPC        | NAME                       |
|-----|------------|----------------------------|
| 1   | 8066095715 | MODELO ESPECIAL 12/ 12 CAN |
| 2   | 1820000769 | BUD LIGHT 12/ 12 BTL       |
| 3   | 3410057636 | LITE 12/ 12 CAN            |
| 4   | 2210000170 | PABST 12/ 12 CAN           |

**Segment # 2 : 2\_2 54.00 In**

| POS | UPC        | NAME                                |
|-----|------------|-------------------------------------|
| 1   | 8769210012 | SAMUEL ADAMS BOSTON LAGER 6/ 12 BTL |
| 2   | 7199009511 | BLUE MOON BELGIAN WHITE 6/ 12 BTL   |
| 3   | 8769230050 | SAMUEL ADAMS SEASONAL 6/ 12 BTL (A) |
| 4   | 3410001509 | HIGH LIFE 12/ 12 BTL                |

**Segment # 2 : 2\_1 66.00 In**

| POS | UPC         | NAME  |
|-----|-------------|---|
| 1   | 7199010071  | COORS BANQUET 1/24 CAN                      |
| 2   | 7199030065  | COORS LIGHT 1/24 CAN                        |
| 3   | 1820025001  | BUD LIGHT 1/25 CAN                          |
| 4   | 1820025000  | BUD 1/25 CAN                                |
| 5   | 8066095643  | CORONA 1/24 CAN                             |
| 6   | 61300874829 | ARNOLD PALMER SPIKED HALF AND HALF 1/24 CAN |
| 7   | 7089701331  | FOSTERS 1/25.4 CAN                          |





CVS # 5446 COLD

Address: 2000 JERICHO TPKE | City: EAST NORTHPORT | State: NY

Chain/StoreNumer: CVS - EAST 5446

Reset Name: 2019 SPRING

Planogram Name: 5446\_2\_DOOR\_COLD

CVS PHARMA... Store # 5446 H: 6 ft 5.00 in W: 3 ft 8.00 in D: 1 ft 10.00 in # of segments: 2

Name: 1\_1 W:22.00 in D:22.00 in Avail Space: 2.02 in Ht Space: 10.00 in

| ID    | UPC        | Barcode       | Name                       | Category      | HFacings | Orientation | Units |
|-------|------------|---------------|----------------------------|---------------|----------|-------------|-------|
| 22090 | 8769282102 | 87692 82102 1 | ANGRY ORCHARD CRISP APP... | ABOVE PREMIUM | 1        | Front       | 4     |
| 15426 | 8066095695 | 80660 95695 4 | CORONA 12/12 CAN           | ABOVE PREMIUM | 1        | Side        | 2     |
| 15400 | 8066095605 | 80660 95605 3 | CORONA 6/12 BTL            | ABOVE PREMIUM | 1        | Front       | 4     |

Name: 1\_2 W:22.00 in D:22.00 in Avail Space: 1.88 in Ht Space: 11.00 in

| ID    | UPC         | Barcode        | Name                           | Category      | HFacings | Orientation | Units |
|-------|-------------|----------------|--------------------------------|---------------|----------|-------------|-------|
| 15436 | 8066095757  | 80660 95757 9  | MODELO ESPECIAL 12/12 BTL      | ABOVE PREMIUM | 1        | Side 90     | 2     |
| 86788 | 3410051681  | 34100 51681 9  | CAPE LINE VARIETY PACK 12/1... | ABOVE PREMIUM | 1        | Side 90     | 2     |
| 45151 | 63598554890 | 635985 54890 4 | WHITE CLAW VARIETY PACK 1...   | ABOVE PREMIUM | 1        | Side 90     | 2     |

Name: 1\_3 W:22.00 in D:22.00 in Avail Space: 2.23 in Ht Space: 11.00 in

| ID    | UPC         | Barcode        | Name                      | Category      | HFacings | Orientation | Units |
|-------|-------------|----------------|---------------------------|---------------|----------|-------------|-------|
| 11301 | 7289000020  | 72890 00020 0  | HEINEKEN 12/12 CAN        | ABOVE PREMIUM | 1        | Top 90      | 2     |
| 11342 | 7289000159  | 72890 00159 7  | HEINEKEN LIGHT 12/12 BTL  | ABOVE PREMIUM | 1        | Side        | 2     |
| 14094 | 78615000014 | 786150 00014 4 | STELLA ARTOIS 12/11.2 BTL | ABOVE PREMIUM | 1        | Side        | 2     |

Name: 1\_4 W:22.00 in D:22.00 in Avail Space: 0.77 in Ht Space: 20.00 in

| ID    | UPC        | Barcode       | Name                       | Category      | HFacings | Orientation | Units |
|-------|------------|---------------|----------------------------|---------------|----------|-------------|-------|
| 11300 | 7289000016 | 72890 00016 3 | HEINEKEN 12/12 BTL         | ABOVE PREMIUM | 1        | Side        | 4     |
| 44952 | 3354495042 | 33544 95042 5 | CORONA PREMIER 12/12 BTL   | ABOVE PREMIUM | 1        | Side        | 2     |
| 15416 | 8066095675 | 80660 95675 6 | CORONA LIGHT 12/12 BTL     | ABOVE PREMIUM | 1        | Side        | 2     |
| 86777 | 3354400013 | 33544 00013 7 | CORONA REFRESCA VARIETY... | ABOVE PREMIUM | 1        | Side 90     | 4     |

Name: 1\_5 W:22.00 in D:22.00 in Avail Space: 0.86 in Ht Space: 20.00 in

| ID | UPC | Barcode | Name | Category | HFacings | Orientation | Units |
|----|-----|---------|------|----------|----------|-------------|-------|
|----|-----|---------|------|----------|----------|-------------|-------|



CVS # 5446 COLD

Address: 2000 JERICHO TPKE | City: EAST NORTHPORT | State: NY

Chain/StoreNumer: CVS - EAST 5446

Reset Name: 2019 SPRING

Planogram Name: 5446\_2\_DOOR\_COLD

|       |             |  |                              |               |   |          |   |
|-------|-------------|--|------------------------------|---------------|---|----------|---|
| 11300 | 7289000016  |  | HEINEKEN 12/12 BTL           | ABOVE PREMIUM | 1 | Side     | 4 |
| 15403 | 8066095615  |  | CORONA 12/12 BTL             | ABOVE PREMIUM | 1 | Side     | 4 |
| 19178 | 85389700227 |  | BON AND VIV SPIKED SELTZE... | ABOVE PREMIUM | 1 | Front 90 | 6 |

Name: 2\_1 W:22.00 in D:22.00 in Avail Space: 1.50 in Ht Space: 10.00 in

| ID    | UPC         | Barcode | Name                        | Category      | HFacings | Orientation | Units |
|-------|-------------|---------|-----------------------------|---------------|----------|-------------|-------|
| 10243 | 7199010071  |         | COORS BANQUET 1/24 CAN      | PREMIUM       | 1        | Front       | 7     |
| 10346 | 7199030065  |         | COORS LIGHT 1/24 CAN        | PREMIUM       | 1        | Front       | 7     |
| 1521  | 1820025001  |         | BUD LIGHT 1/25 CAN          | PREMIUM       | 1        | Front       | 7     |
| 1520  | 1820025000  |         | BUD 1/25 CAN                | PREMIUM       | 1        | Front       | 7     |
| 15415 | 8066095643  |         | CORONA 1/24 CAN             | ABOVE PREMIUM | 1        | Front       | 7     |
| 66064 | 61300874829 |         | ARNOLD PALMER SPIKED HAL... | ABOVE PREMIUM | 1        | Front       | 7     |
| 9452  | 7089701331  |         | FOSTERS 1/25.4 CAN          | ABOVE PREMIUM | 1        | Front       | 6     |

Name: 2\_2 W:22.00 in D:22.00 in Avail Space: -0.26 in Ht Space: 11.00 in

| ID    | UPC        | Barcode | Name                         | Category      | HFacings | Orientation | Units |
|-------|------------|---------|------------------------------|---------------|----------|-------------|-------|
| 21956 | 8769210012 |         | SAMUEL ADAMS BOSTON LAG...   | ABOVE PREMIUM | 1        | Side        | 3     |
| 10180 | 7199009511 |         | BLUE MOON BELGIAN WHITE 6... | ABOVE PREMIUM | 1        | Side        | 2     |
| 21995 | 8769230050 |         | SAMUEL ADAMS SEASONAL 6/...  | ABOVE PREMIUM | 1        | Side        | 3     |
| 3198  | 3410001509 |         | HIGH LIFE 12/12 BTL          | ECONOMY       | 1        | Side        | 2     |

Name: 2\_3 W:22.00 in D:22.00 in Avail Space: 0.00 in Ht Space: 12.00 in

| ID    | UPC        | Barcode | Name                      | Category      | HFacings | Orientation | Units |
|-------|------------|---------|---------------------------|---------------|----------|-------------|-------|
| 15429 | 8066095715 |         | MODELO ESPECIAL 12/12 CAN | ABOVE PREMIUM | 1        | Top 90      | 2     |





CVS # 5446 COLD

Address: 2000 JERICHO TPKE | City: EAST NORTHPORT | State: NY

Chain/StoreNumer: CVS - EAST 5446

Reset Name: 2019 SPRING

Planogram Name: 5446\_2\_DOOR\_COLD

|      |            |  |                     |         |   |        |   |
|------|------------|--|---------------------|---------|---|--------|---|
| 1056 | 182000769  |  | BUD LIGHT 12/12 BTL | PREMIUM | 1 | Side   | 2 |
| 3579 | 3410057636 |  | LITE 12/12 CAN      | PREMIUM | 1 | Top 90 | 2 |
| 2241 | 221000170  |  | PABST 12/12 CAN     | ECONOMY | 1 | Top 90 | 2 |

Name: 2\_4 W:22.00 in D:22.00 in Avail Space: 1.89 in Ht Space: 19.00 in

| ID    | UPC        | Barcode | Name                  | Category | HFacings | Orientation | Units |
|-------|------------|---------|-----------------------|----------|----------|-------------|-------|
| 1659  | 1820053047 |         | BUD LIGHT 12/12 CAN   | PREMIUM  | 1        | Side        | 4     |
| 1297  | 1820011047 |         | BUD 12/12 CAN         | PREMIUM  | 1        | Side        | 4     |
| 10164 | 7199000048 |         | COORS LIGHT 12/12 CAN | PREMIUM  | 1        | Side        | 4     |
| 3552  | 3410057340 |         | LITE 18/12 CAN        | PREMIUM  | 1        | Top 90      | 2     |

Name: 2\_5 W:22.00 in D:22.00 in Avail Space: 1.91 in Ht Space: 20.00 in

| ID    | UPC        | Barcode | Name                    | Category | HFacings | Orientation | Units |
|-------|------------|---------|-------------------------|----------|----------|-------------|-------|
| 1667  | 1820053218 |         | BUD LIGHT 18/12 CAN     | PREMIUM  | 1        | Top 90      | 2     |
| 1307  | 1820011218 |         | BUD 18/12 CAN           | PREMIUM  | 1        | Top 90      | 2     |
| 10329 | 7199030017 |         | COORS LIGHT 18/12 CAN   | PREMIUM  | 1        | Top 90      | 2     |
| 66288 | 1820028443 |         | NATURAL ICE 15/12 CAN   | ECONOMY  | 1        | Side        | 1     |
| 61975 | 1820020077 |         | NATURAL LIGHT 15/12 CAN | ECONOMY  | 1        | Side        | 1     |