



CVS # 10191 WARM

Address: 87 SUNSET AVE | City: WESTHAMPTON BEACH | State: NY

Chain/StoreNumer: CVS - EAST 10191

Reset Name: 2019 SPRING

Planogram Name: 10191_8ft_OPEN_WARM

Segment # 1 : 1_4 DEPTH: 24 in WIDTH: 96 in DISTANCE FROM TOP OF BASE SHELF TO BOTTOM OF SHELF:0.00 in

POS	# FAC	UPC	NAME	CASES	CAPACITY	UNITS HIGH	Category
1	1	1820096721	MICHELOB ULTRA 18/12 CAN	3.0	3	1	ABOVE PREMIUM
2	1	1820053218	BUD LIGHT 18/12 CAN	3.0	3	1	PREMIUM
3	1	1820053308	BUD LIGHT 18/12 BTL	2.0	2	1	PREMIUM
4	1	1820000769	BUD LIGHT 12/12 BTL	2.0	4	1	PREMIUM
5	1	1820011218	BUD 18/12 CAN	3.0	3	1	PREMIUM
6	1	7199030017	COORS LIGHT 18/12 CAN	3.0	3	1	PREMIUM
1	1	3410057340	LITE 18/12 CAN	3.0	3	1	PREMIUM
2	1	3410001509	HIGH LIFE 12/12 BTL	2.0	4	1	ECONOMY
3	1	2210000170	PABST 12/12 CAN	3.0	6	1	ECONOMY
4	1	1820020077	NATURAL LIGHT 15/12 CAN	1.5	3	1	ECONOMY
5	1	1820028443	NATURAL ICE 15/12 CAN	1.5	3	1	ECONOMY
6	1	3410031344	MILWAUKEES BEST 15/12 CAN	1.5	3	1	ECONOMY

Segment # 1 : 1_4 - 1 DEPTH: 24 in WIDTH: 96 in DISTANCE FROM TOP OF BASE SHELF TO BOTTOM OF SHELF:20.00 in

POS	# FAC	UPC	NAME	CASES	CAPACITY	UNITS HIGH	Category
1	1	1820005989	MICHELOB ULTRA 6/12 BTL	0.8	3	1	ABOVE PREMIUM
2	1	1820005990	MICHELOB ULTRA 12/12 BTL	1.0	2	1	ABOVE PREMIUM
3	1	1820020083	MICHELOB ULTRA PURE GOLD 12/12 BTL	1.0	2	1	ABOVE PREMIUM
4	1	1820053047	BUD LIGHT 12/12 CAN	1.0	2	1	PREMIUM
5	1	1820000771	BUD 12/12 BTL	1.0	2	1	PREMIUM
6	1	1820011047	BUD 12/12 CAN	1.0	2	1	PREMIUM
7	1	7199030069	COORS LIGHT 12/12 BTL	1.0	2	1	PREMIUM
1	2	7199000048	COORS LIGHT 12/12 CAN	2.0	4	2	PREMIUM
2	1	7199030120	COORS LIGHT 3/24 CAN	0.5	2	1	PREMIUM
3	1	3410057509	LITE 12/12 BTL	1.0	2	1	PREMIUM
4	1	3410057636	LITE 12/12 CAN	1.0	2	1	PREMIUM
5	1	8066095757	MODELO ESPECIAL 12/12 BTL	1.0	2	1	ABOVE PREMIUM
6	1	8066095715	MODELO ESPECIAL 12/12 CAN	1.0	2	1	ABOVE PREMIUM
7	1	7143934450	ROLLING ROCK 12/12 CAN	1.0	2	1	ECONOMY

Segment # 1 : 1_4 - 3 DEPTH: 24 in WIDTH: 96 in DISTANCE FROM TOP OF BASE SHELF TO BOTTOM OF SHELF:32.00 in

POS	# FAC	UPC	NAME	CASES	CAPACITY	UNITS HIGH	Category
1	1	7861500014	STELLA ARTOIS 12/11.2 BTL	1.0	2	1	ABOVE PREMIUM
2	1	7289000188	HEINEKEN LIGHT 12/12 CAN	1.0	2	1	ABOVE PREMIUM
3	1	7289000159	HEINEKEN LIGHT 12/12 BTL	1.0	2	1	ABOVE PREMIUM
4	1	7289000011	HEINEKEN 6/12 BTL	0.8	3	1	ABOVE PREMIUM
5	1	7289000020	HEINEKEN 12/12 CAN	1.0	2	1	ABOVE PREMIUM
6	1	7289000016	HEINEKEN 12/12 BTL	1.0	2	1	ABOVE PREMIUM
7	1	8248812300	BECKS 12/12 BTL	1.0	2	1	ABOVE PREMIUM
1	1	8066095625	CORONA LIGHT 6/12 BTL	0.8	3	1	ABOVE PREMIUM
2	1	8066095605	CORONA 6/12 BTL	0.8	3	1	ABOVE PREMIUM
3	2	8066095615	CORONA 12/12 BTL	2.0	4	2	ABOVE PREMIUM
4	1	8066095695	CORONA 12/12 CAN	1.5	3	1	ABOVE PREMIUM
5	1	3354495041	CORONA PREMIER 6/12 BTL	0.8	3	1	ABOVE PREMIUM
6	1	8066095765	MODELO ESPECIAL 6/12 BTL	0.5	2	1	ABOVE PREMIUM
7	1	63598554890	WHITE CLAW VARIETY PACK 12/12 CAN	1.5	3	1	ABOVE PREMIUM

Segment # 1 : 1_4 - 4 DEPTH: 24 in WIDTH: 96 in DISTANCE FROM TOP OF BASE SHELF TO BOTTOM OF SHELF:46.00 in

POS	# FAC	UPC	NAME	CASES	CAPACITY	UNITS HIGH	Category
-----	-------	-----	------	-------	----------	------------	----------



CVS # 10191 WARM

Address: 87 SUNSET AVE | City: WESTHAMPTON BEACH | State: NY

Chain/StoreNumer: CVS - EAST 10191

Reset Name: 2019 SPRING

Planogram Name: 10191_8ft_OPEN_WARM

1	1	68174512232	BLUE POINT MOSAIC SESSION IPA 6/12 BTL	0.8	3	1	ABOVE PREMIUM
2	1	68174511112	BLUE POINT TOASTED LAGER 6/12 BTL	0.8	3	1	ABOVE PREMIUM
3	1	68174511102	BLUE POINT HOPTICAL ILLUSION IPA 6/12 BTL	0.8	3	1	ABOVE PREMIUM
4	1	75452700024	NEW BELGIUM FAT TIRE 12/12 BTL	1.0	2	1	ABOVE PREMIUM
5	1	3410051605	LEINIES SEASONAL SHANDY 6/12 BTL	0.8	3	1	ABOVE PREMIUM
6	1	8769210012	SAMUEL ADAMS BOSTON LAGER 6/12 BTL	0.8	3	1	ABOVE PREMIUM
7	1	8769230050	SAMUEL ADAMS SEASONAL 6/12 BTL (A)	0.8	3	1	ABOVE PREMIUM
8	1	8769201103	SAMUEL ADAMS SEASONAL 12/12 BTL (A)	1.0	2	1	ABOVE PREMIUM
1	1	7199009511	BLUE MOON BELGIAN WHITE 6/12 BTL	0.8	3	1	ABOVE PREMIUM
2	1	7199009516	BLUE MOON BELGIAN WHITE 12/12 BTL	1.0	2	1	ABOVE PREMIUM
3	1	1820013986	SHOCK TOP BELGIAN WHITE 6/12 BTL	0.8	3	1	ABOVE PREMIUM
4	1	9200002000	NOT YOUR FATHERS ROOT BEER 6/12 BTL	0.8	3	1	ABOVE PREMIUM
5	1	3410008716	REDD'S 6/12 BTL	0.8	3	1	ABOVE PREMIUM
6	1	8769282102	ANGRY ORCHARD CRISP APPLE 6/12 BTL	0.8	3	1	ABOVE PREMIUM
7	1	63598526032	MIKES HARD VARIETY PACK 12/11.2 BTL (3.2)	1.0	2	1	ABOVE PREMIUM
8	1	85389700227	BON AND VIV SPIKED SELTZER VARIETY 12/12 CAN	1.5	3	1	ABOVE PREMIUM

REVERSE VIEW (ONLY IF NEEDED)





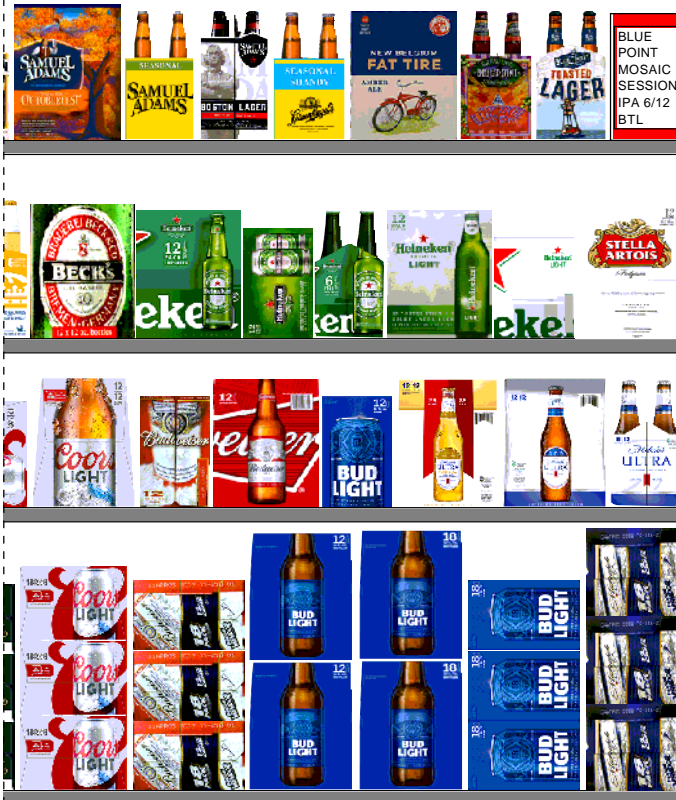
CVS # 10191 WARM

Reset Timing 2019 SPRING

Address: 87 SUNSET AVE | City: WESTHAMPTON BEACH | State: NY

REVERSE VIEW (ONLY IF NEEDED)

Segment:
1 of 2



Segment # 1 : 1_4 0.00 In

POS	UPC	NAME
1	1820096721	MICHELOB ULTRA 18/ 12 CAN
2	1820053218	BUD LIGHT 18/ 12 CAN
3	1820053308	BUD LIGHT 18/ 12 BTL
4	1820000769	BUD LIGHT 12/ 12 BTL
5	1820011218	BUD 18/ 12 CAN
6	7199030017	COORS LIGHT 18/ 12 CAN

Segment # 1 : 1_4 - 1 20.00 In

POS	UPC	NAME
1	1820005989	MICHELOB ULTRA 6/ 12 BTL
2	1820005990	MICHELOB ULTRA 12/ 12 BTL
3	1820020083	MICHELOB ULTRA PURE GOLD 12/ 12 BTL
4	1820053047	BUD LIGHT 12/ 12 CAN
5	1820000771	BUD 12/ 12 BTL
6	1820011047	BUD 12/ 12 CAN
7	7199030069	COORS LIGHT 12/ 12 BTL

Segment # 1 : 1_4 - 3 32.00 In

POS	UPC	NAME
1	78615000014	STELLA ARTOIS 12/ 11.2 BTL
2	7289000188	HEINEKEN LIGHT 12/ 12 CAN
3	7289000159	HEINEKEN LIGHT 12/ 12 BTL
4	7289000011	HEINEKEN 6/ 12 BTL
5	7289000020	HEINEKEN 12/ 12 CAN
6	7289000016	HEINEKEN 12/ 12 BTL
7	8248812300	BECKS 12/ 12 BTL

Segment # 1 : 1_4 - 4 46.00 In

POS	UPC	NAME
1	68174512232	BLUE POINT MOSAIC SESSION IPA 6/ 12 BTL
2	68174511112	BLUE POINT TOASTED LAGER 6/ 12 BTL
3	68174511102	BLUE POINT HOPTICAL ILLUSION IPA 6/ 12 BTL
4	75452700024	NEW BELGIUM FAT TIRE 12/ 12 BTL
5	3410051605	LEINIES SEASONAL SHANDY 6/ 12 BTL
6	8769210012	SAMUEL ADAMS BOSTON LAGER 6/ 12 BTL
7	8769230050	SAMUEL ADAMS SEASONAL 6/ 12 BTL (A)
8	8769201103	SAMUEL ADAMS SEASONAL 12/ 12 BTL (A)



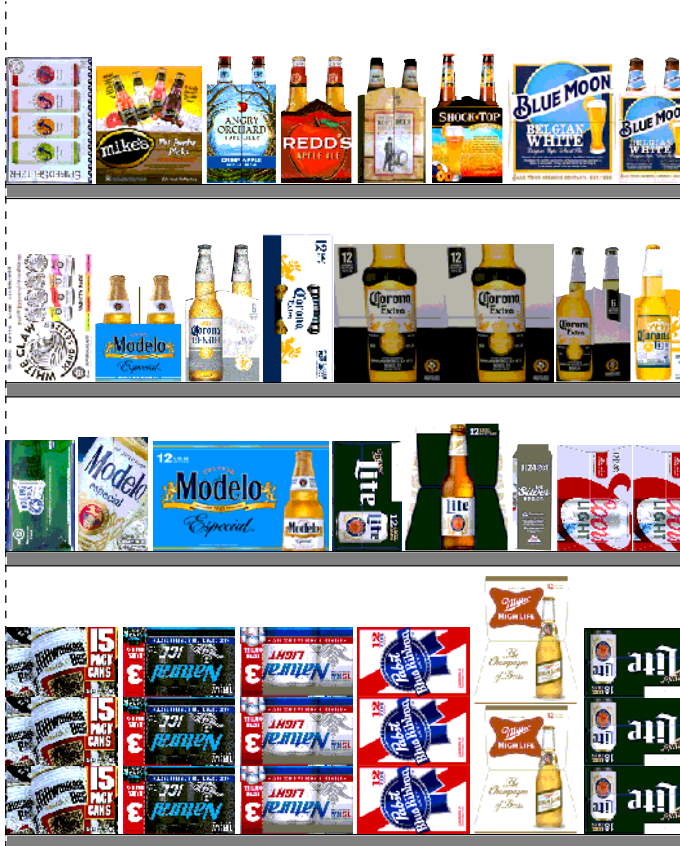
CVS # 10191 WARM

Reset Timing 2019 SPRING

Address: 87 SUNSET AVE | City: WESTHAMPTON BEACH | State: NY

REVERSE VIEW (ONLY IF NEEDED)

Segment:
2 of 2



Segment # 1 : 1_4 0.00 In

POS	UPC	NAME
1	3410057340	LITE 18/ 12 CAN
2	3410001509	HIGH LIFE 12/ 12 BTL
3	2210000170	PABST 12/ 12 CAN
4	1820020077	NATURAL LIGHT 15/ 12 CAN
5	1820028443	NATURAL ICE 15/ 12 CAN
6	3410031344	MILWAUKEES BEST 15/ 12 CAN

Segment # 1 : 1_4 - 1 20.00 In

POS	UPC	NAME
1	7199000048	COORS LIGHT 12/ 12 CAN
2	7199030120	COORS LIGHT 3/ 24 CAN
3	3410057509	LITE 12/ 12 BTL
4	3410057636	LITE 12/ 12 CAN
5	8066095757	MODELO ESPECIAL 12/ 12 BTL
6	8066095715	MODELO ESPECIAL 12/ 12 CAN
7	7143934450	ROLLING ROCK 12/ 12 CAN

Segment # 1 : 1_4 - 3 32.00 In

POS	UPC	NAME
1	8066095625	CORONA LIGHT 6/ 12 BTL
2	8066095605	CORONA 6/ 12 BTL
3	8066095615	CORONA 12/ 12 BTL
4	8066095695	CORONA 12/ 12 CAN
5	3354495041	CORONA PREMIER 6/ 12 BTL
6	8066095765	MODELO ESPECIAL 6/ 12 BTL
7	63598554890	WHITE CLAW VARIETY PACK 12/ 12 CAN

Segment # 1 : 1_4 - 4 46.00 In

POS	UPC	NAME
1	7199009511	BLUE MOON BELGIAN WHITE 6/ 12 BTL
2	7199009516	BLUE MOON BELGIAN WHITE 12/ 12 BTL
3	1820013986	SHOCK TOP BELGIAN WHITE 6/ 12 BTL
4	9200002000	NOT YOUR FATHERS ROOT BEER 6/ 12 BTL
5	3410008716	REDD'S 6/ 12 BTL
6	8769282102	ANGRY ORCHARD CRISP APPLE 6/ 12 BTL
7	63598526032	MIKES HARD VARIETY PACK 12/ 11.2 BTL (3.2)
8	85389700227	BON AND VIV SPIKED SELTZER VARIETY 12/ 12 CAN



CVS # 10191 WARM

Address: 87 SUNSET AVE | City: WESTHAMPTON BEACH | State: NY

Chain/StoreNumer: CVS - EAST 10191

Reset Name: 2019 SPRING

Planogram Name: 10191_8ft_OPEN_WARM

CVS PHARMA... Store # 10191 H: 5 ft W: 8 ft D: 2 ft # of segments: 2

Name: 1_4 - 4 W:96.00 in D:24.00 in Avail Space: 4.93 in Ht Space: 13.00 in

ID	UPC	Barcode	Name	Category	HFacings	Orientation	Units
7913	68174512232	6 81745 12232 7	BLUE POINT MOSAIC SESSION...	ABOVE PREMIUM	1	Side	3
7902	68174511112	6 81745 11112 3	BLUE POINT TOASTED LAGER...	ABOVE PREMIUM	1	Side	3
7900	68174511102	6 81745 11102 4	BLUE POINT HOPTICAL ILLUSI...	ABOVE PREMIUM	1	Side	3
13010	75452700024	7 54527 00024 0	NEW BELGIUM FAT TIRE 12/12 ...	ABOVE PREMIUM	1	Side	2
3492	3410051605	0 34100 51605 5	LEINIES SEASONAL SHANDY 6...	ABOVE PREMIUM	1	Side	3
21956	8769210012	0 87692 10012 6	SAMUEL ADAMS BOSTON LAG...	ABOVE PREMIUM	1	Side	3
21995	8769230050	0 87692 30050 2	SAMUEL ADAMS SEASONAL 6/...	ABOVE PREMIUM	1	Side	3
21940	8769201103	0 87692 01103 3	SAMUEL ADAMS SEASONAL 1...	ABOVE PREMIUM	1	Side	2
10180	7199009511	0 71990 09511 6	BLUE MOON BELGIAN WHITE 6...	ABOVE PREMIUM	1	Side	3
10183	7199009516	0 71990 09516 1	BLUE MOON BELGIAN WHITE 1...	ABOVE PREMIUM	1	Side	2
1345	1820013986	0 18200 13986 4	SHOCK TOP BELGIAN WHITE 6...	ABOVE PREMIUM	1	Side	3
24261	9200002000	0 92000 02000 3	NOT YOUR FATHERS ROOT B...	ABOVE PREMIUM	1	Side	3
3255	3410008716	0 34100 08716 6	REDD'S 6/12 BTL	ABOVE PREMIUM	1	Side	3
22090	8769282102	0 87692 82102 1	ANGRY ORCHARD CRISP APP...	ABOVE PREMIUM	1	Side	3
58609	63598526032	6 35985 26032 5	MIKES HARD VARIETY PACK 1...	ABOVE PREMIUM	1	Side	2
19178	85389700227	8 53897 00227 1	BON AND VIV SPIKED SELTZE...	ABOVE PREMIUM	1	Front 90	3

Name: 1_4 - 3 W:96.00 in D:24.00 in Avail Space: 2.39 in Ht Space: 13.00 in



CVS # 10191 WARM

Address: 87 SUNSET AVE | City: WESTHAMPTON BEACH | State: NY

Chain/StoreNumer: CVS - EAST 10191

Reset Name: 2019 SPRING

Planogram Name: 10191_8ft_OPEN_WARM

ID	UPC	Barcode	Name	Category	HFacings	Orientation	Units
14094	78615000014	7 86150 00014 4	STELLA ARTOIS 12/11.2 BTL	ABOVE PREMIUM	1	Side	2
11348	7289000188	0 72890 00188 7	HEINEKEN LIGHT 12/12 CAN	ABOVE PREMIUM	1	Side	2
11342	7289000159	0 72890 00159 7	HEINEKEN LIGHT 12/12 BTL	ABOVE PREMIUM	1	Side	2
11298	7289000011	0 72890 00011 8	HEINEKEN 6/12 BTL	ABOVE PREMIUM	1	Side	3
11301	7289000020	0 72890 00020 0	HEINEKEN 12/12 CAN	ABOVE PREMIUM	1	Side	2
11300	7289000016	0 72890 00016 3	HEINEKEN 12/12 BTL	ABOVE PREMIUM	1	Side	2
16691	8248812300	0 82488 12300 6	BECKS 12/12 BTL	ABOVE PREMIUM	1	Side	2
15408	8066095625	0 80660 95625 1	CORONA LIGHT 6/12 BTL	ABOVE PREMIUM	1	Side	3
15400	8066095605	0 80660 95605 3	CORONA 6/12 BTL	ABOVE PREMIUM	1	Side	3
15403	8066095615	0 80660 95615 2	CORONA 12/12 BTL	ABOVE PREMIUM	2	Side	4
15426	8066095695	0 80660 95695 4	CORONA 12/12 CAN	ABOVE PREMIUM	1	Top 90	3
44964	3354495041	0 33544 95041 8	CORONA PREMIER 6/12 BTL	ABOVE PREMIUM	1	Side	3
15442	8066095765	0 80660 95765 4	MODELO ESPECIAL 6/12 BTL	ABOVE PREMIUM	1	Side	2
45151	63598554890	6 35985 54890 4	WHITE CLAW VARIETY PACK 1...	ABOVE PREMIUM	1	Front 90	3

Name: 1_4 - 1 W:96.00 in D:24.00 in Avail Space: 3.70 in Ht Space: 11.00 in

ID	UPC	Barcode	Name	Category	HFacings	Orientation	Units
1227	1820005989	0 18200 05989 6	MICHELOB ULTRA 6/12 BTL	ABOVE PREMIUM	1	Side	3
1228	1820005990	0 18200 05990 2	MICHELOB ULTRA 12/12 BTL	ABOVE PREMIUM	1	Side	2
65828	1820020083	0 18200 20083 0	MICHELOB ULTRA PURE GOLD...	ABOVE PREMIUM	1	Side	2



CVS # 10191 WARM

Address: 87 SUNSET AVE | City: WESTHAMPTON BEACH | State: NY

Chain/StoreNumer: CVS - EAST 10191

Reset Name: 2019 SPRING

Planogram Name: 10191_8ft_OPEN_WARM

1659	1820053047		BUD LIGHT 12/12 CAN	PREMIUM	1	Side	2
1058	1820000771		BUD 12/12 BTL	PREMIUM	1	Side	2
1297	1820011047		BUD 12/12 CAN	PREMIUM	1	Side	2
10348	7199030069		COORS LIGHT 12/12 BTL	PREMIUM	1	Side	2
10164	7199000048		COORS LIGHT 12/12 CAN	PREMIUM	2	Side	4
10372	7199030120		COORS LIGHT 3/24 CAN	PREMIUM	1	Side	2
3565	3410057509		LITE 12/12 BTL	PREMIUM	1	Side	2
3579	3410057636		LITE 12/12 CAN	PREMIUM	1	Side	2
15436	8066095757		MODELO ESPECIAL 12/12 BTL	ABOVE PREMIUM	1	Front	2
15429	8066095715		MODELO ESPECIAL 12/12 CAN	ABOVE PREMIUM	1	Side	2
9886	7143934450		ROLLING ROCK 12/12 CAN	ECONOMY	1	Side	2

Name: 1_4 W:96.00 in D:24.00 in Avail Space: 4.31 in Ht Space: 19.00 in

ID	UPC	Barcode	Name	Category	HFacings	Orientation	Units
1850	1820096721		MICHELOB ULTRA 18/12 CAN	ABOVE PREMIUM	1	Side 90	3
1667	1820053218		BUD LIGHT 18/12 CAN	PREMIUM	1	Side 90	3
1670	1820053308		BUD LIGHT 18/12 BTL	PREMIUM	1	Side	2
1056	1820000769		BUD LIGHT 12/12 BTL	PREMIUM	1	Side	4
1307	1820011218		BUD 18/12 CAN	PREMIUM	1	Side 90	3
10329	7199030017		COORS LIGHT 18/12 CAN	PREMIUM	1	Side 90	3



CVS # 10191 WARM

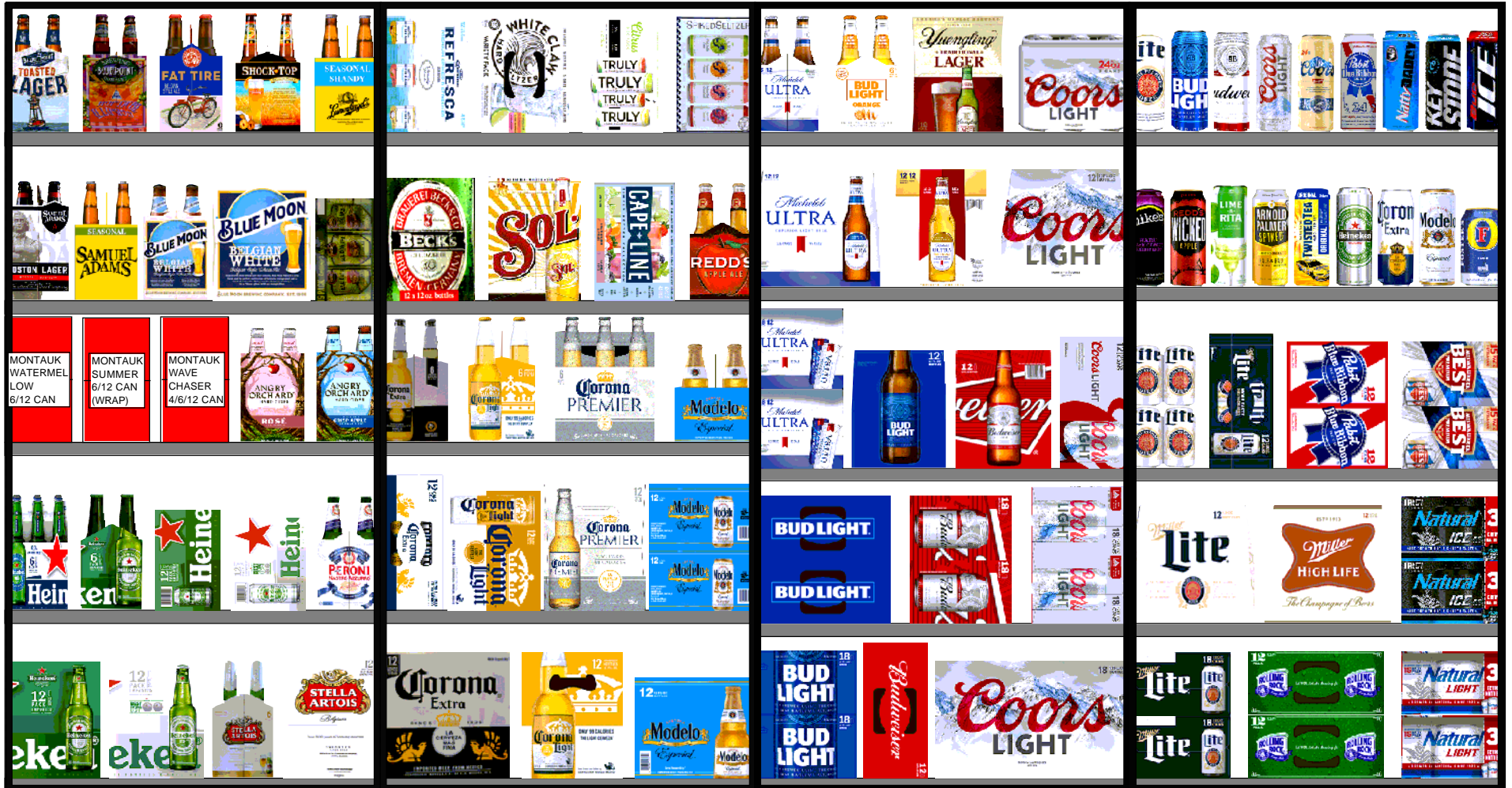
Address: 87 SUNSET AVE | City: WESTHAMPTON BEACH | State: NY

Chain/StoreNumer: CVS - EAST 10191

Reset Name: 2019 SPRING

Planogram Name: 10191_8ft_OPEN_WARM

3552	3410057340		LITE 18/12 CAN	PREMIUM	1	Side 90	3
3198	3410001509		HIGH LIFE 12/12 BTL	ECONOMY	1	Side	4
2241	2210000170		PABST 12/12 CAN	ECONOMY	1	Side 90	6
61975	1820020077		NATURAL LIGHT 15/12 CAN	ECONOMY	1	Side 90	3
66288	1820028443		NATURAL ICE 15/12 CAN	ECONOMY	1	Side 90	3
70234	3410031344		MILWAUKEES BEST 15/12 CAN	ECONOMY	1	Side 90	3





CVS # 10191 COLD

Address: 87 SUNSET AVE | City: WESTHAMPTON BEACH | State: NY

Chain/StoreNumer: CVS - EAST 10191

Reset Name: 2019 SPRING

Planogram Name: 10191_4_DOOR_COLD

Segment # 1 : 1_5 DEPTH: 23 in WIDTH: 29 in DISTANCE FROM TOP OF BASE SHELF TO BOTTOM OF SHELF:0.00 in

POS #	FAC	UPC	NAME	CASES	CAPACITY	UNITS HIGH	Category
1	1	7289000016	HEINEKEN 12/12 BTL	1.0	2	1	ABOVE PREMIUM
2	1	7289000159	HEINEKEN LIGHT 12/12 BTL	1.0	2	1	ABOVE PREMIUM
3	1	78615000001	STELLA ARTOIS 6/11.2 BTL	0.8	3	1	ABOVE PREMIUM
4	1	78615000014	STELLA ARTOIS 12/11.2 BTL	1.0	2	1	ABOVE PREMIUM

Segment # 1 : 1_4 DEPTH: 23 in WIDTH: 29 in DISTANCE FROM TOP OF BASE SHELF TO BOTTOM OF SHELF:13.00 in

POS #	FAC	UPC	NAME	CASES	CAPACITY	UNITS HIGH	Category
1	1	7289000621	HEINEKEN 0.0 NEAR BEER 6/12 BTL	0.8	3	1	ABOVE PREMIUM
2	1	7289000011	HEINEKEN 6/12 BTL	0.8	3	1	ABOVE PREMIUM
3	1	7289000020	HEINEKEN 12/12 CAN	1.0	2	1	ABOVE PREMIUM
4	1	7289000188	HEINEKEN LIGHT 12/12 CAN	1.0	2	1	ABOVE PREMIUM
5	1	18195400002	PERONI 6/11.2 BTL	0.8	3	1	ABOVE PREMIUM

Segment # 1 : 1_3 DEPTH: 23 in WIDTH: 29 in DISTANCE FROM TOP OF BASE SHELF TO BOTTOM OF SHELF:26.00 in

POS #	FAC	UPC	NAME	CASES	CAPACITY	UNITS HIGH	Category
1	1	86907100026	MONTAUK WATERMELLOW 6/12 CAN	1.0	4	1	ABOVE PREMIUM
2	1	86273700006	MONTAUK SUMMER 6/12 CAN (WRAP)	1.0	4	1	ABOVE PREMIUM
3	1	86907100027	MONTAUK WAVE CHASER 4/6/12 CAN	1.0	4	1	ABOVE PREMIUM
4	1	8769200660	ANGRY ORCHARD ROSE 6/12 BTL	0.8	3	1	ABOVE PREMIUM
5	1	8769282102	ANGRY ORCHARD CRISP APPLE 6/12 BTL	0.8	3	1	ABOVE PREMIUM

Segment # 1 : 1_2 DEPTH: 23 in WIDTH: 29 in DISTANCE FROM TOP OF BASE SHELF TO BOTTOM OF SHELF:37.00 in

POS #	FAC	UPC	NAME	CASES	CAPACITY	UNITS HIGH	Category
1	1	8769210012	SAMUEL ADAMS BOSTON LAGER 6/12 BTL	0.8	3	1	ABOVE PREMIUM
2	1	8769230050	SAMUEL ADAMS SEASONAL 6/12 BTL (A)	0.8	3	1	ABOVE PREMIUM
3	1	7199009511	BLUE MOON BELGIAN WHITE 6/12 BTL	0.8	3	1	ABOVE PREMIUM
4	1	7199009516	BLUE MOON BELGIAN WHITE 12/12 BTL	1.0	2	1	ABOVE PREMIUM
5	1	64286090024	FOUNDERS ALL DAY SESSION IPA 15/12 CAN	0.5	1	1	ABOVE PREMIUM

Segment # 1 : 1_1 DEPTH: 23 in WIDTH: 29 in DISTANCE FROM TOP OF BASE SHELF TO BOTTOM OF SHELF:50.00 in

POS #	FAC	UPC	NAME	CASES	CAPACITY	UNITS HIGH	Category
1	1	68174511112	BLUE POINT TOASTED LAGER 6/12 BTL	0.5	2	1	ABOVE PREMIUM
2	1	68174511102	BLUE POINT HOPTICAL ILLUSION IPA 6/12 BTL	0.5	2	1	ABOVE PREMIUM
3	1	75452700022	NEW BELGIUM FAT TIRE 6/12 BTL	0.8	3	1	ABOVE PREMIUM
4	1	1820013986	SHOCK TOP BELGIAN WHITE 6/12 BTL	0.5	2	1	ABOVE PREMIUM
5	1	3410051605	LEINIES SEASONAL SHANDY 6/12 BTL	0.8	3	1	ABOVE PREMIUM

Segment # 2 : 2_5 DEPTH: 23 in WIDTH: 29 in DISTANCE FROM TOP OF BASE SHELF TO BOTTOM OF SHELF:0.00 in

POS #	FAC	UPC	NAME	CASES	CAPACITY	UNITS HIGH	Category
1	1	8066095615	CORONA 12/12 BTL	1.0	2	1	ABOVE PREMIUM
2	1	8066095675	CORONA LIGHT 12/12 BTL	1.0	2	1	ABOVE PREMIUM
3	1	8066095757	MODELO ESPECIAL 12/12 BTL	0.5	1	1	ABOVE PREMIUM

Segment # 2 : 2_4 DEPTH: 23 in WIDTH: 29 in DISTANCE FROM TOP OF BASE SHELF TO BOTTOM OF SHELF:13.00 in



CVS # 10191 COLD

Address: 87 SUNSET AVE | City: WESTHAMPTON BEACH | State: NY

Chain/StoreNumer: CVS - EAST 10191

Reset Name: 2019 SPRING

Planogram Name: 10191_4_DOOR_COLD

POS	# FAC	UPC	NAME	CASES	CAPACITY	UNITS HIGH	Category
1	1	8066095695	CORONA 12/12 CAN	1.0	2	1	ABOVE PREMIUM
2	1	8066095621	CORONA LIGHT 12/12 CAN	1.5	3	1	ABOVE PREMIUM
3	1	3354495042	CORONA PREMIER 12/12 BTL	1.0	2	1	ABOVE PREMIUM
4	1	8066095715	MODELO ESPECIAL 12/12 CAN	2.0	4	1	ABOVE PREMIUM

Segment # 2 : 2_3 DEPTH: 23 in WIDTH: 29 in DISTANCE FROM TOP OF BASE SHELF TO BOTTOM OF SHELF:26.00 in

POS	# FAC	UPC	NAME	CASES	CAPACITY	UNITS HIGH	Category
1	1	8066095605	CORONA 6/12 BTL	0.5	2	1	ABOVE PREMIUM
2	1	8066095625	CORONA LIGHT 6/12 BTL	0.5	2	1	ABOVE PREMIUM
3	1	3354495041	CORONA PREMIER 6/12 BTL	1.0	4	1	ABOVE PREMIUM
4	1	8066095765	MODELO ESPECIAL 6/12 BTL	0.5	2	1	ABOVE PREMIUM

Segment # 2 : 2_2 DEPTH: 23 in WIDTH: 29 in DISTANCE FROM TOP OF BASE SHELF TO BOTTOM OF SHELF:37.00 in

POS	# FAC	UPC	NAME	CASES	CAPACITY	UNITS HIGH	Category
1	1	8248812300	BECKS 12/12 BTL	1.0	2	1	ABOVE PREMIUM
2	1	7231123021	SOL 12/12 BTL	1.0	2	1	ABOVE PREMIUM
3	1	3410051681	CAPE LINE VARIETY PACK 12/12 CAN	1.5	3	1	ABOVE PREMIUM
4	1	3410008716	REDDS 6/12 BTL	0.8	3	1	ABOVE PREMIUM

Segment # 2 : 2_1 DEPTH: 23 in WIDTH: 29 in DISTANCE FROM TOP OF BASE SHELF TO BOTTOM OF SHELF:50.00 in

POS	# FAC	UPC	NAME	CASES	CAPACITY	UNITS HIGH	Category
1	1	3354400013	CORONA REFRESCA VARIETY 12/12 CAN	1.5	3	1	ABOVE PREMIUM
2	1	63598554890	WHITE CLAW VARIETY PACK 12/12 CAN	1.5	3	1	ABOVE PREMIUM
3	1	8769200424	TRULY VARIETY PACK 12/12 CAN	1.5	3	1	ABOVE PREMIUM
4	1	85389700227	BON AND VIV SPIKED SELTZER VARIETY 12/12 CAN	1.5	3	1	ABOVE PREMIUM

Segment # 3 : 3_5 DEPTH: 23 in WIDTH: 29 in DISTANCE FROM TOP OF BASE SHELF TO BOTTOM OF SHELF:0.00 in

POS	# FAC	UPC	NAME	CASES	CAPACITY	UNITS HIGH	Category
1	1	1820053218	BUD LIGHT 18/12 CAN	2.0	2	1	PREMIUM
2	1	1820011047	BUD 12/12 CAN	1.0	2	1	PREMIUM
3	1	7199030078	COORS LIGHT 18/12 BTL	3.0	3	1	PREMIUM

Segment # 3 : 3_4 DEPTH: 23 in WIDTH: 29 in DISTANCE FROM TOP OF BASE SHELF TO BOTTOM OF SHELF:12.00 in

POS	# FAC	UPC	NAME	CASES	CAPACITY	UNITS HIGH	Category
1	1	1820053047	BUD LIGHT 12/12 CAN	2.0	4	1	PREMIUM
2	1	1820011218	BUD 18/12 CAN	2.0	2	1	PREMIUM
3	1	7199030017	COORS LIGHT 18/12 CAN	2.0	2	1	PREMIUM

Segment # 3 : 3_3 DEPTH: 23 in WIDTH: 29 in DISTANCE FROM TOP OF BASE SHELF TO BOTTOM OF SHELF:24.00 in

POS	# FAC	UPC	NAME	CASES	CAPACITY	UNITS HIGH	Category
1	1	1820096721	MICHELOB ULTRA 18/12 CAN	2.0	2	1	ABOVE PREMIUM
2	1	1820000769	BUD LIGHT 12/12 BTL	1.0	2	1	PREMIUM
3	1	1820000771	BUD 12/12 BTL	1.0	2	1	PREMIUM
4	1	7199000048	COORS LIGHT 12/12 CAN	1.5	3	1	PREMIUM



CVS # 10191 COLD

Address: 87 SUNSET AVE | City: WESTHAMPTON BEACH | State: NY

Chain/StoreNumer: CVS - EAST 10191

Reset Name: 2019 SPRING

Planogram Name: 10191_4_DOOR_COLD

Segment # 3 : 3_2 DEPTH: 23 in WIDTH: 29 in DISTANCE FROM TOP OF BASE SHELF TO BOTTOM OF SHELF:38.00 in

POS #	FAC	UPC	NAME	CASES	CAPACITY	UNITS HIGH	Category
1	1	1820005990	MICHELOB ULTRA 12/12 BTL	1.5	3	1	ABOVE PREMIUM
2	1	1820020083	MICHELOB ULTRA PURE GOLD 12/12 BTL	1.0	2	1	ABOVE PREMIUM
3	1	7199030069	COORS LIGHT 12/12 BTL	1.5	3	1	PREMIUM

Segment # 3 : 3_1 DEPTH: 23 in WIDTH: 29 in DISTANCE FROM TOP OF BASE SHELF TO BOTTOM OF SHELF:50.00 in

POS #	FAC	UPC	NAME	CASES	CAPACITY	UNITS HIGH	Category
1	1	1820005989	MICHELOB ULTRA 6/12 BTL	0.8	3	1	ABOVE PREMIUM
2	1	1820020079	BUD LIGHT ORANGE 6/12 BTL	0.8	3	1	ABOVE PREMIUM
3	1	8992427896	YUENGLING LAGER 12/12 BTL	1.0	2	1	PREMIUM
4	1	7199030120	COORS LIGHT 3/24 CAN	1.8	7	1	PREMIUM

Segment # 4 : 4_5 DEPTH: 23 in WIDTH: 29 in DISTANCE FROM TOP OF BASE SHELF TO BOTTOM OF SHELF:0.00 in

POS #	FAC	UPC	NAME	CASES	CAPACITY	UNITS HIGH	Category
1	1	3410057340	LITE 18/12 CAN	2.0	2	1	PREMIUM
2	1	7143934450	ROLLING ROCK 12/12 CAN	2.0	4	1	ECONOMY
3	1	1820020077	NATURAL LIGHT 15/12 CAN	1.0	2	1	ECONOMY

Segment # 4 : 4_4 DEPTH: 23 in WIDTH: 29 in DISTANCE FROM TOP OF BASE SHELF TO BOTTOM OF SHELF:12.00 in

POS #	FAC	UPC	NAME	CASES	CAPACITY	UNITS HIGH	Category
1	1	3410057509	LITE 12/12 BTL	1.5	3	1	PREMIUM
2	1	3410001509	HIGH LIFE 12/12 BTL	1.5	3	1	ECONOMY
3	1	1820028443	NATURAL ICE 15/12 CAN	1.0	2	1	ECONOMY

Segment # 4 : 4_3 DEPTH: 23 in WIDTH: 29 in DISTANCE FROM TOP OF BASE SHELF TO BOTTOM OF SHELF:24.00 in

POS #	FAC	UPC	NAME	CASES	CAPACITY	UNITS HIGH	Category
1	1	3410000354	LITE 6/12 CAN	1.0	4	1	PREMIUM
2	1	3410057636	LITE 12/12 CAN	1.0	2	1	PREMIUM
3	1	2210000170	PABST 12/12 CAN	2.0	4	1	ECONOMY
4	1	3410031344	MILWAUKEES BEST 15/12 CAN	1.0	2	1	ECONOMY

Segment # 4 : 4_2 DEPTH: 23 in WIDTH: 29 in DISTANCE FROM TOP OF BASE SHELF TO BOTTOM OF SHELF:38.00 in

POS #	FAC	UPC	NAME	CASES	CAPACITY	UNITS HIGH	Category
1	1	63598525884	MIKES HARD BLACK CHERRY LEMONADE 1/23.5 CAN	0.7	8	1	ABOVE PREMIUM
2	1	3410000323	REDD'S WICKED 1/24 CAN	0.7	8	1	ABOVE PREMIUM
3	1	1820025014	BUD LIGHT LIME-A-RITA 1/25 CAN	0.5	8	1	ABOVE PREMIUM
4	1	61300874829	ARNOLD PALMER SPIKED HALF AND HALF 1/24 CAN	0.7	8	1	ABOVE PREMIUM
5	1	8769283231	TWISTED TEA ORIGINAL 1/24 CAN	0.6	7	1	ABOVE PREMIUM
6	1	7289000119	HEINEKEN 1/24 CAN	0.6	7	1	ABOVE PREMIUM
7	1	8066095643	CORONA 1/24 CAN	0.7	8	1	ABOVE PREMIUM
8	1	8066095721	MODELO ESPECIAL 1/24 CAN	0.6	7	1	ABOVE PREMIUM
9	1	7089701331	FOSTERS 1/25.4 CAN	0.5	6	1	ABOVE PREMIUM

Segment # 4 : 4_1 DEPTH: 23 in WIDTH: 29 in DISTANCE FROM TOP OF BASE SHELF TO BOTTOM OF SHELF:50.00 in



CVS # 10191 COLD

Address: 87 SUNSET AVE | City: WESTHAMPTON BEACH | State: NY

Chain/StoreNumer: CVS - EAST 10191

Reset Name: 2019 SPRING

Planogram Name: 10191_4_DOOR_COLD

POS	# FAC	UPC	NAME	CASES	CAPACITY	UNITS HIGH	Category
1	1	3410000355	LITE 1/24 CAN	0.7	8	1	PREMIUM
2	1	1820025001	BUD LIGHT 1/25 CAN	0.5	8	1	PREMIUM
3	1	1820025000	BUD 1/25 CAN	0.5	8	1	PREMIUM
4	1	7199030065	COORS LIGHT 1/24 CAN	0.7	8	1	PREMIUM
5	1	7199010071	COORS BANQUET 1/24 CAN	0.7	8	1	PREMIUM
6	1	2210000004	PABST 1/24 CAN	0.6	7	1	ECONOMY
7	1	1820025013	NATTY DADDY 1/25 CAN	0.7	8	1	ECONOMY
8	1	7199047712	KEYSTONE ICE 1/24 CAN	0.7	8	1	ECONOMY
9	1	1820025006	BUD ICE 1/25 CAN	0.5	8	1	ECONOMY



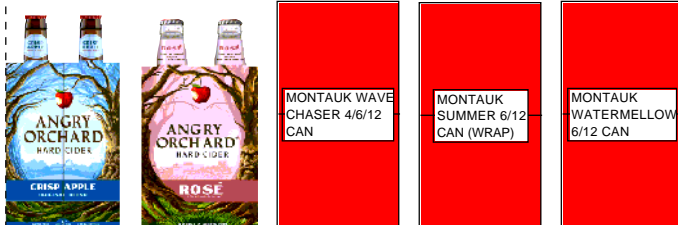
CVS # 10191 COLD

Reset Timing 2019 SPRING

Address: 87 SUNSET AVE | City: WESTHAMPTON BEACH | State: NY

REVERSE VIEW (ONLY IF NEEDED)

Segment:
1 of 4



Segment # 1 : 1_5 0.00 In

POS	UPC	NAME
1	7289000016	HEINEKEN 12/ 12 BTL
2	7289000159	HEINEKEN LIGHT 12/ 12 BTL
3	78615000001	STELLA ARTOIS 6/ 11.2 BTL
4	78615000014	STELLA ARTOIS 12/ 11.2 BTL

Segment # 1 : 1_4 13.00 In

POS	UPC	NAME
1	7289000621	HEINEKEN 0.0 NEAR BEER 6/ 12 BTL
2	7289000011	HEINEKEN 6/ 12 BTL
3	7289000020	HEINEKEN 12/ 12 CAN
4	7289000188	HEINEKEN LIGHT 12/ 12 CAN
5	18195400002	PERONI 6/ 11.2 BTL

Segment # 1 : 1_3 26.00 In

POS	UPC	NAME
1	86907100026	MONTAUK WATERMELLOW 6/ 12 CAN
2	86273700006	MONTAUK SUMMER 6/ 12 CAN (WRAP)
3	86907100027	MONTAUK WAVE CHASER 4/ 6/ 12 CAN
4	8769200660	ANGRY ORCHARD ROSE 6/ 12 BTL
5	8769282102	ANGRY ORCHARD CRISP APPLE 6/ 12 BTL

Segment # 1 : 1_2 37.00 In

POS	UPC	NAME
1	8769210012	SAMUEL ADAMS BOSTON LAGER 6/ 12 BTL
2	87692300050	SAMUEL ADAMS SEASONAL 6/ 12 BTL (A)
3	7199009511	BLUE MOON BELGIAN WHITE 6/ 12 BTL
4	7199009516	BLUE MOON BELGIAN WHITE 12/ 12 BTL
5	64286090024	FOUNDERS ALL DAY SESSION IPA 15/ 12 CAN

Segment # 1 : 1_1 50.00 In

POS	UPC	NAME
1	68174511112	BLUE POINT TOASTED LAGER 6/ 12 BTL
2	68174511102	BLUE POINT OPTICAL ILLUSION IPA 6/ 12 BTL
3	75452700022	NEW BELGIUM FAT TIRE 6/ 12 BTL
4	1820013986	SHOCK TOP BELGIAN WHITE 6/ 12 BTL
5	3410051605	LEINIES SEASONAL SHANDY 6/ 12 BTL



CVS # 10191 COLD

Reset Timing 2019 SPRING

Address: 87 SUNSET AVE | City: WESTHAMPTON BEACH | State: NY

REVERSE VIEW (ONLY IF NEEDED)

Segment:
2 of 4



Segment # 2 : 2_5 0.00 In

POS	UPC	NAME
1	8066095615	CORONA 12/ 12 BTL
2	8066095675	CORONA LIGHT 12/ 12 BTL
3	8066095757	MODELO ESPECIAL 12/ 12 BTL

Segment # 2 : 2_4 13.00 In

POS	UPC	NAME
1	8066095695	CORONA 12/ 12 CAN
2	8066095621	CORONA LIGHT 12/ 12 CAN
3	3354495042	CORONA PREMIER 12/ 12 BTL
4	8066095715	MODELO ESPECIAL 12/ 12 CAN

Segment # 2 : 2_3 26.00 In

POS	UPC	NAME
1	8066095605	CORONA 6/ 12 BTL
2	8066095625	CORONA LIGHT 6/ 12 BTL
3	3354495041	CORONA PREMIER 6/ 12 BTL
4	8066095765	MODELO ESPECIAL 6/ 12 BTL

Segment # 2 : 2_2 37.00 In

POS	UPC	NAME
1	8248812300	BECKS 12/ 12 BTL
2	7231123021	SOL 12/ 12 BTL
3	3410051681	CAPE LINE VARIETY PACK 12/ 12 CAN
4	3410008716	REDDS 6/ 12 BTL

Segment # 2 : 2_1 50.00 In

POS	UPC	NAME
1	3354400013	CORONA REFRESCA VARIETY 12/ 12 CAN
2	63598554890	WHITE CLAW VARIETY PACK 12/ 12 CAN
3	8769200424	TRULY VARIETY PACK 12/ 12 CAN
4	85389700227	BON AND VIV SPIKED SELTZER VARIETY 12/ 12 CAN



CVS # 10191 COLD

Reset Timing 2019 SPRING

Address: 87 SUNSET AVE | City: WESTHAMPTON BEACH | State: NY

REVERSE VIEW (ONLY IF NEEDED)

Segment:
3 of 4



Segment # 3 : 3_5 0.00 In

POS	UPC	NAME
1	1820053218	BUD LIGHT 18/ 12 CAN
2	1820011047	BUD 12/ 12 CAN
3	7199030078	COORS LIGHT 18/ 12 BTL

Segment # 3 : 3_4 12.00 In

POS	UPC	NAME
1	1820053047	BUD LIGHT 12/ 12 CAN
2	1820011218	BUD 18/ 12 CAN
3	7199030017	COORS LIGHT 18/ 12 CAN

Segment # 3 : 3_3 24.00 In

POS	UPC	NAME
1	1820096721	MICHELOB ULTRA 18/ 12 CAN
2	1820000769	BUD LIGHT 12/ 12 BTL
3	1820000771	BUD 12/ 12 BTL
4	7199000048	COORS LIGHT 12/ 12 CAN

Segment # 3 : 3_2 38.00 In

POS	UPC	NAME
1	1820005990	MICHELOB ULTRA 12/ 12 BTL
2	1820020083	MICHELOB ULTRA PURE GOLD 12/ 12 BTL
3	7199030069	COORS LIGHT 12/ 12 BTL

Segment # 3 : 3_1 50.00 In

POS	UPC	NAME
1	1820005989	MICHELOB ULTRA 6/ 12 BTL
2	1820020079	BUD LIGHT ORANGE 6/ 12 BTL
3	8992427896	YUENGLING LAGER 12/ 12 BTL
4	7199030120	COORS LIGHT 3/ 24 CAN



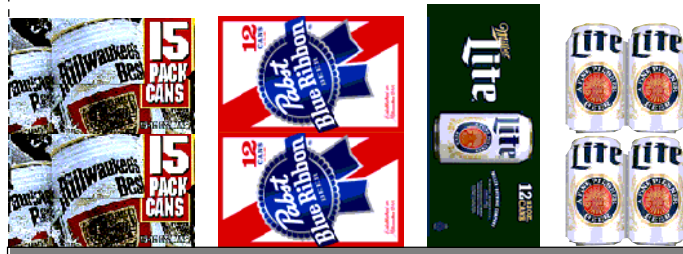
CVS # 10191 COLD

Reset Timing 2019 SPRING

Address: 87 SUNSET AVE | City: WESTHAMPTON BEACH | State: NY

REVERSE VIEW (ONLY IF NEEDED)

Segment:
4 of 4



Segment # 4 : 4_5 0.00 In

POS	UPC	NAME
1	3410057340	LITE 18/ 12 CAN
2	7143934450	ROLLING ROCK 12/ 12 CAN
3	1820020077	NATURAL LIGHT 15/ 12 CAN

Segment # 4 : 4_4 12.00 In

POS	UPC	NAME
1	3410057509	LITE 12/ 12 BTL
2	3410001509	HIGH LIFE 12/ 12 BTL
3	1820028443	NATURAL ICE 15/ 12 CAN

Segment # 4 : 4_3 24.00 In

POS	UPC	NAME
1	3410000354	LITE 6/ 12 CAN
2	3410057636	LITE 12/ 12 CAN
3	2210000170	PABST 12/ 12 CAN
4	3410031344	MILWAUKEES BEST 15/ 12 CAN

Segment # 4 : 4_2 38.00 In

POS	UPC	NAME
1	63598525884	MIKES HARD BLACK CHERRY LEMONADE 1/23.5 CAN
2	3410000323	REDD'S WICKED 1/ 24 CAN
3	1820025014	BUD LIGHT LIME LIME-A-RITA 1/ 25 CAN
4	61300874829	ARNOLD PALMER SPIKED HALF AND HALF 1/24 CAN
5	8769283231	TWISTED TEA ORIGINAL 1/24 CAN
6	7289000119	HEINEKEN 1/24 CAN
7	8066095643	CORONA 1/ 24 CAN
8	8066095721	MODELO ESPECIAL 1/ 24 CAN
9	7089701331	FOSTERS 1/25.4 CAN

Segment # 4 : 4_1 50.00 In

POS	UPC	NAME
1	3410000355	LITE 1/ 24 CAN
2	1820025001	BUD LIGHT 1/ 25 CAN
3	1820025000	BUD 1/ 25 CAN
4	7199030065	COORS LIGHT 1/ 24 CAN
5	7199010071	COORS BANQUET 1/24 CAN
6	2210000004	PABST 1/ 24 CAN
7	1820025013	NATTY DADDY 1/ 25 CAN
8	7199047712	KEYSTONE ICE 1/ 24 CAN
9	1820025006	BUD ICE 1/ 25 CAN



CVS # 10191 COLD

Address: 87 SUNSET AVE | City: WESTHAMPTON BEACH | State: NY

Chain/StoreNumer: CVS - EAST 10191

Reset Name: 2019 SPRING

Planogram Name: 10191_4_DOOR_COLD

CVS PHARMA... Store # 10191 H: 5 ft 1.00 in W: 9 ft 8.00 in D: 1 ft 11.00 in # of segments: 4

Name: 1_1 W:29.00 in D:23.00 in Avail Space: 3.94 in Ht Space: 10.00 in

ID	UPC	Barcode	Name	Category	HFacings	Orientation	Units
7902	68174511112	6 81745 11112 3	BLUE POINT TOASTED LAGER...	ABOVE PREMIUM	1	Side	2
7900	68174511102	6 81745 11102 4	BLUE POINT HOPTICAL ILLUSI...	ABOVE PREMIUM	1	Side	2
13009	75452700022	7 54527 00022 6	NEW BELGIUM FAT TIRE 6/12 B...	ABOVE PREMIUM	1	Side	3
1345	1820013986	0 18200 13986 4	SHOCK TOP BELGIAN WHITE 6...	ABOVE PREMIUM	1	Side	2
3492	3410051605	0 34100 51605 5	LEINIES SEASONAL SHANDY 6...	ABOVE PREMIUM	1	Side	3

Name: 1_2 W:29.00 in D:23.00 in Avail Space: 1.62 in Ht Space: 12.00 in

ID	UPC	Barcode	Name	Category	HFacings	Orientation	Units
21956	8769210012	0 87692 10012 6	SAMUEL ADAMS BOSTON LAG...	ABOVE PREMIUM	1	Side	3
21995	8769230050	0 87692 30050 2	SAMUEL ADAMS SEASONAL 6/...	ABOVE PREMIUM	1	Side	3
10180	7199009511	0 71990 09511 6	BLUE MOON BELGIAN WHITE 6...	ABOVE PREMIUM	1	Side	3
10183	7199009516	0 71990 09516 1	BLUE MOON BELGIAN WHITE 1...	ABOVE PREMIUM	1	Side	2
7044	64286090024	6 42860 90024 5	FOUNDERS ALL DAY SESSION...	ABOVE PREMIUM	1	Side	1

Name: 1_3 W:29.00 in D:23.00 in Avail Space: 3.48 in Ht Space: 10.00 in

ID	UPC	Barcode	Name	Category	HFacings	Orientation	Units
52894	86907100026	8 69071 00026 1	MONTAUK WATERMELLOW 6/...	ABOVE PREMIUM	1	Side	4
48714	86273700006	8 62737 00006 3	MONTAUK SUMMER 6/12 CAN (...)	ABOVE PREMIUM	1	Side	4
52895	86907100027	8 69071 00027 8	MONTAUK WAVE CHASER 4/6/...	ABOVE PREMIUM	1	Side	4
65019	8769200660	0 87692 00660 2	ANGRY ORCHARD ROSE 6/12 ...	ABOVE PREMIUM	1	Side	3



CVS # 10191 COLD

Address: 87 SUNSET AVE | City: WESTHAMPTON BEACH | State: NY

Chain/StoreNumer: CVS - EAST 10191

Reset Name: 2019 SPRING

Planogram Name: 10191_4_DOOR_COLD

22090	8769282102		1	ANGRY ORCHARD CRISP APP...	ABOVE PREMIUM	1	Side	3
-------	------------	--	---	----------------------------	---------------	---	------	---

Name: 1_4 W:29.00 in D:23.00 in Avail Space: 3.71 in Ht Space: 12.00 in

ID	UPC	Barcode	Name	Category	HFacings	Orientation	Units
89681	7289000621		HEINEKEN 0.0 NEAR BEER 6/12...	ABOVE PREMIUM	1	Side	3
11298	7289000011		HEINEKEN 6/12 BTL	ABOVE PREMIUM	1	Side	3
11301	7289000020		HEINEKEN 12/12 CAN	ABOVE PREMIUM	1	Side	2
11348	7289000188		HEINEKEN LIGHT 12/12 CAN	ABOVE PREMIUM	1	Side	2
568	18195400002		PERONI 6/11.2 BTL	ABOVE PREMIUM	1	Side	3

Name: 1_5 W:29.00 in D:23.00 in Avail Space: 2.03 in Ht Space: 12.00 in

ID	UPC	Barcode	Name	Category	HFacings	Orientation	Units
11300	7289000016		HEINEKEN 12/12 BTL	ABOVE PREMIUM	1	Side	2
11342	7289000159		HEINEKEN LIGHT 12/12 BTL	ABOVE PREMIUM	1	Side	2
14089	78615000001		STELLA ARTOIS 6/11.2 BTL	ABOVE PREMIUM	1	Side	3
14094	78615000014		STELLA ARTOIS 12/11.2 BTL	ABOVE PREMIUM	1	Side	2

Name: 2_1 W:29.00 in D:23.00 in Avail Space: 3.31 in Ht Space: 10.00 in

ID	UPC	Barcode	Name	Category	HFacings	Orientation	Units
86777	3354400013		CORONA REFRESCA VARIETY...	ABOVE PREMIUM	1	Top 90	3
45151	63598554890		WHITE CLAW VARIETY PACK 1...	ABOVE PREMIUM	1	Top 90	3
43031	8769200424		TRULY VARIETY PACK 12/12 C...	ABOVE PREMIUM	1	Front 90	3
19178	85389700227		BON AND VIV SPIKED SELTZE...	ABOVE PREMIUM	1	Front 90	3

Name: 2_2 W:29.00 in D:23.00 in Avail Space: 3.41 in Ht Space: 12.00 in

ID	UPC	Barcode	Name	Category	HFacings	Orientation	Units
----	-----	---------	------	----------	----------	-------------	-------



CVS # 10191 COLD

Address: 87 SUNSET AVE | City: WESTHAMPTON BEACH | State: NY

Chain/StoreNumer: CVS - EAST 10191

Reset Name: 2019 SPRING

Planogram Name: 10191_4_DOOR_COLD

16691	8248812300		BECKS 12/12 BTL	ABOVE PREMIUM	1	Side	2
10790	7231123021		SOL 12/12 BTL	ABOVE PREMIUM	1	Side	2
86788	3410051681		CAPE LINE VARIETY PACK 12/1...	ABOVE PREMIUM	1	Front 90	3
3255	3410008716		REDDS 6/12 BTL	ABOVE PREMIUM	1	Side	3

Name: 2_3 W:29.00 in D:23.00 in Avail Space: 4.47 in Ht Space: 10.00 in

ID	UPC	Barcode	Name	Category	HFacings	Orientation	Units
15400	8066095605		CORONA 6/12 BTL	ABOVE PREMIUM	1	Side	2
15408	8066095625		CORONA LIGHT 6/12 BTL	ABOVE PREMIUM	1	Side	2
44964	3354495041		CORONA PREMIER 6/12 BTL	ABOVE PREMIUM	1	Front	4
15442	8066095765		MODELO ESPECIAL 6/12 BTL	ABOVE PREMIUM	1	Side	2

Name: 2_4 W:29.00 in D:23.00 in Avail Space: 1.13 in Ht Space: 12.00 in

ID	UPC	Barcode	Name	Category	HFacings	Orientation	Units
15426	8066095695		CORONA 12/12 CAN	ABOVE PREMIUM	1	Top 90	2
15406	8066095621		CORONA LIGHT 12/12 CAN	ABOVE PREMIUM	1	Front 90	3
44952	3354495042		CORONA PREMIER 12/12 BTL	ABOVE PREMIUM	1	Side	2
15429	8066095715		MODELO ESPECIAL 12/12 CAN	ABOVE PREMIUM	1	Side 90	4

Name: 2_5 W:29.00 in D:23.00 in Avail Space: 1.98 in Ht Space: 12.00 in

ID	UPC	Barcode	Name	Category	HFacings	Orientation	Units
15403	8066095615		CORONA 12/12 BTL	ABOVE PREMIUM	1	Front	2
15416	8066095675		CORONA LIGHT 12/12 BTL	ABOVE PREMIUM	1	Side	2
15436	8066095757		MODELO ESPECIAL 12/12 BTL	ABOVE PREMIUM	1	Side	1



CVS # 10191 COLD

Address: 87 SUNSET AVE | City: WESTHAMPTON BEACH | State: NY

Chain/StoreNumer: CVS - EAST 10191

Reset Name: 2019 SPRING

Planogram Name: 10191_4_DOOR_COLD

Name: 3_1		W:29.00 in	D:23.00 in	Avail Space: 3.16 in		Ht Space: 10.00 in	
ID	UPC	Barcode	Name	Category	HFacings	Orientation	Units
1227	1820005989		MICHELOB ULTRA 6/12 BTL	ABOVE PREMIUM	1	Side	3
67176	1820020079		BUD LIGHT ORANGE 6/12 BTL	ABOVE PREMIUM	1	Side	3
23902	8992427896		YUENGLING LAGER 12/12 BTL	PREMIUM	1	Side	2
10372	7199030120		COORS LIGHT 3/24 CAN	PREMIUM	1	Front	7

Name: 3_2		W:29.00 in	D:23.00 in	Avail Space: 2.05 in		Ht Space: 11.00 in	
ID	UPC	Barcode	Name	Category	HFacings	Orientation	Units
1228	1820005990		MICHELOB ULTRA 12/12 BTL	ABOVE PREMIUM	1	Front	3
65828	1820020083		MICHELOB ULTRA PURE GOLD...	ABOVE PREMIUM	1	Side	2
10348	7199030069		COORS LIGHT 12/12 BTL	PREMIUM	1	Front	3

Name: 3_3		W:29.00 in	D:23.00 in	Avail Space: 2.14 in		Ht Space: 13.00 in	
ID	UPC	Barcode	Name	Category	HFacings	Orientation	Units
1850	1820096721		MICHELOB ULTRA 18/12 CAN	ABOVE PREMIUM	1	Side 90	2
1056	1820000769		BUD LIGHT 12/12 BTL	PREMIUM	1	Side	2
1058	1820000771		BUD 12/12 BTL	PREMIUM	1	Side	2
10164	7199000048		COORS LIGHT 12/12 CAN	PREMIUM	1	Top 90	3

Name: 3_4		W:29.00 in	D:23.00 in	Avail Space: 3.05 in		Ht Space: 11.00 in	
ID	UPC	Barcode	Name	Category	HFacings	Orientation	Units
1659	1820053047		BUD LIGHT 12/12 CAN	PREMIUM	1	Top	4
1307	1820011218		BUD 18/12 CAN	PREMIUM	1	Side 90	2
10329	7199030017		COORS LIGHT 18/12 CAN	PREMIUM	1	Side 90	2

Name: 3_5		W:29.00 in	D:23.00 in	Avail Space: 1.15 in		Ht Space: 11.00 in	
ID	UPC	Barcode	Name	Category	HFacings	Orientation	Units



CVS # 10191 COLD

Address: 87 SUNSET AVE | City: WESTHAMPTON BEACH | State: NY

Chain/StoreNumer: CVS - EAST 10191

Reset Name: 2019 SPRING

Planogram Name: 10191_4_DOOR_COLD

1667	1820053218		BUD LIGHT 18/12 CAN	PREMIUM	1	Side 90	2
1297	1820011047		BUD 12/12 CAN	PREMIUM	1	Top 90	2
10352	7199030078		COORS LIGHT 18/12 BTL	PREMIUM	1	Front	3

Name: 4_1 W:29.00 in D:23.00 in Avail Space: 3.22 in Ht Space: 10.00 in

ID	UPC	Barcode	Name	Category	HFacings	Orientation	Units
2968	3410000355		LITE 1/24 CAN	PREMIUM	1	Side	8
1521	1820025001		BUD LIGHT 1/25 CAN	PREMIUM	1	Front	8
1520	1820025000		BUD 1/25 CAN	PREMIUM	1	Front	8
10346	7199030065		COORS LIGHT 1/24 CAN	PREMIUM	1	Front	8
10243	7199010071		COORS BANQUET 1/24 CAN	PREMIUM	1	Front	8
2191	2210000004		PABST 1/24 CAN	ECONOMY	1	Front	7
1533	1820025013		NATTY DADDY 1/25 CAN	ECONOMY	1	Front	8
10412	7199047712		KEYSTONE ICE 1/24 CAN	ECONOMY	1	Front	8
1526	1820025006		BUD ICE 1/25 CAN	ECONOMY	1	Front	8

Name: 4_2 W:29.00 in D:23.00 in Avail Space: 2.74 in Ht Space: 11.00 in

ID	UPC	Barcode	Name	Category	HFacings	Orientation	Units
6487	63598525884		MIKES HARD BLACK CHERRY L...	ABOVE PREMIUM	1	Front	8
2935	3410000323		REDD'S WICKED 1/24 CAN	ABOVE PREMIUM	1	Front	8
1534	1820025014		BUD LIGHT LIME LIME-A-RITA 1...	ABOVE PREMIUM	1	Front	8
66064	61300874829		ARNOLD PALMER SPIKED HAL...	ABOVE PREMIUM	1	Front	8



CVS # 10191 COLD

Address: 87 SUNSET AVE | City: WESTHAMPTON BEACH | State: NY

Chain/StoreNumer: CVS - EAST 10191

Reset Name: 2019 SPRING

Planogram Name: 10191_4_DOOR_COLD

22099	8769283231		0 87692 83231 7	TWISTED TEA ORIGINAL 1/24 C...	ABOVE PREMIUM	1	Front	7
11327	7289000119		0 72890 00119 1	HEINEKEN 1/24 CAN	ABOVE PREMIUM	1	Front	7
15415	8066095643		0 80660 95643 5	CORONA 1/24 CAN	ABOVE PREMIUM	1	Front	8
15431	8066095721		0 80660 95721 0	MODELO ESPECIAL 1/24 CAN	ABOVE PREMIUM	1	Front	7
9452	7089701331		0 70897 01331 5	FOSTERS 1/25.4 CAN	ABOVE PREMIUM	1	Front	6

Name: 4_3 W:29.00 in D:23.00 in Avail Space: 3.20 in Ht Space: 13.00 in

ID	UPC	Barcode	Name	Category	HFacings	Orientation	Units	
2967	3410000354		0 34100 00354 8	LITE 6/12 CAN	PREMIUM	1	Side	4
3579	3410057636		0 34100 57636 3	LITE 12/12 CAN	PREMIUM	1	Top 90	2
2241	2210000170		0 22100 00170 1	PABST 12/12 CAN	ECONOMY	1	Side 90	4
70234	3410031344		0 34100 31344 9	MILWAUKEES BEST 15/12 CAN	ECONOMY	1	Side 90	2

Name: 4_4 W:29.00 in D:23.00 in Avail Space: 1.49 in Ht Space: 11.00 in

ID	UPC	Barcode	Name	Category	HFacings	Orientation	Units	
3565	3410057509		0 34100 57509 0	LITE 12/12 BTL	PREMIUM	1	Front	3
3198	3410001509		0 34100 01509 1	HIGH LIFE 12/12 BTL	ECONOMY	1	Front	3
66288	1820028443		0 18200 28443 4	NATURAL ICE 15/12 CAN	ECONOMY	1	Side 90	2

Name: 4_5 W:29.00 in D:23.00 in Avail Space: 2.74 in Ht Space: 11.00 in

ID	UPC	Barcode	Name	Category	HFacings	Orientation	Units	
3552	3410057340		0 34100 57340 9	LITE 18/12 CAN	PREMIUM	1	Side 90	2
9886	7143934450		0 71439 34450 8	ROLLING ROCK 12/12 CAN	ECONOMY	1	Top	4
61975	1820020077		0 18200 20077 9	NATURAL LIGHT 15/12 CAN	ECONOMY	1	Side 90	2