





CVS # 2780 COLD

Address: 814 HEMPSTEAD AVE | City: WEST HEMPSTEAD | State: NY

Chain/StoreNumer: CVS - EAST 2780

Reset Name: 2019 SPRING

Planogram Name: 2780_3_DOOR_COLD

Segment # 1 : 1_4 DEPTH: 24 in WIDTH: 28 in DISTANCE FROM TOP OF BASE SHELF TO BOTTOM OF SHELF:0.00 in

POS #	FAC	UPC	NAME	CASES	CAPACITY	UNITS HIGH	Category
1	1	7289000159	HEINEKEN LIGHT 12/12 BTL	3.0	6	1	ABOVE PREMIUM
2	1	7289000016	HEINEKEN 12/12 BTL	3.0	6	1	ABOVE PREMIUM
3	1	7289000020	HEINEKEN 12/12 CAN	3.0	6	1	ABOVE PREMIUM
4	1	8066095615	CORONA 12/12 BTL	3.0	6	1	ABOVE PREMIUM

Segment # 1 : 1_3 DEPTH: 24 in WIDTH: 28 in DISTANCE FROM TOP OF BASE SHELF TO BOTTOM OF SHELF:31.00 in

POS #	FAC	UPC	NAME	CASES	CAPACITY	UNITS HIGH	Category
1	1	75452700161	NEW BELGIUM FAT TIRE 12/12 CAN	1.0	2	1	ABOVE PREMIUM
2	1	75452700022	NEW BELGIUM FAT TIRE 6/12 BTL	0.8	3	1	ABOVE PREMIUM
3	1	7289000011	HEINEKEN 6/12 BTL	0.8	3	1	ABOVE PREMIUM
4	1	78615000014	STELLA ARTOIS 12/11.2 BTL	1.0	2	1	ABOVE PREMIUM
5	1	78615000001	STELLA ARTOIS 6/11.2 BTL	0.8	3	1	ABOVE PREMIUM

Segment # 1 : 1_2 DEPTH: 24 in WIDTH: 28 in DISTANCE FROM TOP OF BASE SHELF TO BOTTOM OF SHELF:43.00 in

POS #	FAC	UPC	NAME	CASES	CAPACITY	UNITS HIGH	Category
1	1	3410051681	CAPE LINE VARIETY PACK 12/12 CAN	1.5	3	1	ABOVE PREMIUM
2	1	8769200424	TRULY VARIETY PACK 12/12 CAN	1.5	3	1	ABOVE PREMIUM
3	1	63598554890	WHITE CLAW VARIETY PACK 12/12 CAN	1.5	3	1	ABOVE PREMIUM
4	1	3354400013	CORONA REFRESCA VARIETY 12/12 CAN	1.5	3	1	ABOVE PREMIUM

Segment # 1 : 1_1 DEPTH: 24 in WIDTH: 28 in DISTANCE FROM TOP OF BASE SHELF TO BOTTOM OF SHELF:53.50 in

POS #	FAC	UPC	NAME	CASES	CAPACITY	UNITS HIGH	Category
1	1	85389700227	BON AND VIV SPIKED SELTZER VARIETY 12/12 CAN	1.5	3	1	ABOVE PREMIUM
2	1	7199009511	BLUE MOON BELGIAN WHITE 6/12 BTL	0.8	3	1	ABOVE PREMIUM
3	1	8769210012	SAMUEL ADAMS BOSTON LAGER 6/12 BTL	0.8	3	1	ABOVE PREMIUM
4	1	8769230050	SAMUEL ADAMS SEASONAL 6/12 BTL (A)	0.8	3	1	ABOVE PREMIUM
5	1	86273700006	MONTAUK SUMMER 6/12 CAN (WRAP)	1.5	6	1	ABOVE PREMIUM

Segment # 2 : 2_4 DEPTH: 24 in WIDTH: 28 in DISTANCE FROM TOP OF BASE SHELF TO BOTTOM OF SHELF:0.00 in

POS #	FAC	UPC	NAME	CASES	CAPACITY	UNITS HIGH	Category
1	1	8066095675	CORONA LIGHT 12/12 BTL	2.0	4	1	ABOVE PREMIUM
2	1	1820000769	BUD LIGHT 12/12 BTL	3.0	6	1	PREMIUM
3	1	1820053218	BUD LIGHT 18/12 CAN	3.0	3	1	PREMIUM
4	1	1820000771	BUD 12/12 BTL	3.0	6	1	PREMIUM

Segment # 2 : 2_3 DEPTH: 24 in WIDTH: 28 in DISTANCE FROM TOP OF BASE SHELF TO BOTTOM OF SHELF:29.00 in

POS #	FAC	UPC	NAME	CASES	CAPACITY	UNITS HIGH	Category
1	1	3354495042	CORONA PREMIER 12/12 BTL	1.0	2	1	ABOVE PREMIUM
2	1	8066095695	CORONA 12/12 CAN	1.5	3	1	ABOVE PREMIUM
3	1	8066095715	MODELO ESPECIAL 12/12 CAN	1.0	2	1	ABOVE PREMIUM
4	1	8066095757	MODELO ESPECIAL 12/12 BTL	0.5	1	1	ABOVE PREMIUM

Segment # 2 : 2_2 DEPTH: 24 in WIDTH: 28 in DISTANCE FROM TOP OF BASE SHELF TO BOTTOM OF SHELF:41.00 in



CVS # 2780 COLD

Address: 814 HEMPSTEAD AVE | City: WEST HEMPSTEAD | State: NY

Chain/StoreNumer: CVS - EAST 2780

Reset Name: 2019 SPRING

Planogram Name: 2780_3_DOOR_COLD

POS	# FAC	UPC	NAME	CASES	CAPACITY	UNITS HIGH	Category
1	1	8769282102	ANGRY ORCHARD CRISP APPLE 6/12 BTL	0.8	3	1	ABOVE PREMIUM
2	1	8769200660	ANGRY ORCHARD ROSE 6/12 BTL	0.8	3	1	ABOVE PREMIUM
3	1	8066095605	CORONA 6/12 BTL	0.8	3	1	ABOVE PREMIUM
4	1	8066095625	CORONA LIGHT 6/12 BTL	0.8	3	1	ABOVE PREMIUM
5	1	8066095765	MODELO ESPECIAL 6/12 BTL	0.5	2	1	ABOVE PREMIUM

Segment # 2 : 2_1 DEPTH: 24 in WIDTH: 28 in DISTANCE FROM TOP OF BASE SHELF TO BOTTOM OF SHELF:53.50 in

POS	# FAC	UPC	NAME	CASES	CAPACITY	UNITS HIGH	Category
1	1	7231123021	SOL 12/12 BTL	1.0	2	1	ABOVE PREMIUM
2	1	1820005990	MICHELOB ULTRA 12/12 BTL	1.0	2	1	ABOVE PREMIUM
3	1	1820020083	MICHELOB ULTRA PURE GOLD 12/12 BTL	1.0	2	1	ABOVE PREMIUM
4	1	1820020079	BUD LIGHT ORANGE 6/12 BTL	0.8	3	1	ABOVE PREMIUM

Segment # 3 : 3_4 DEPTH: 24 in WIDTH: 28 in DISTANCE FROM TOP OF BASE SHELF TO BOTTOM OF SHELF:0.00 in

POS	# FAC	UPC	NAME	CASES	CAPACITY	UNITS HIGH	Category
1	1	1820011218	BUD 18/12 CAN	3.0	3	1	PREMIUM
2	1	7199030017	COORS LIGHT 18/12 CAN	3.0	3	1	PREMIUM
3	1	3410057340	LITE 18/12 CAN	3.0	3	1	PREMIUM
4	1	1820020077	NATURAL LIGHT 15/12 CAN	1.5	3	1	ECONOMY
5	1	1820028443	NATURAL ICE 15/12 CAN	1.5	3	1	ECONOMY

Segment # 3 : 3_3 DEPTH: 24 in WIDTH: 28 in DISTANCE FROM TOP OF BASE SHELF TO BOTTOM OF SHELF:29.00 in

POS	# FAC	UPC	NAME	CASES	CAPACITY	UNITS HIGH	Category
1	1	7199030069	COORS LIGHT 12/12 BTL	1.0	2	1	PREMIUM
2	1	3410057509	LITE 12/12 BTL	1.0	2	1	PREMIUM
3	1	3410001509	HIGH LIFE 12/12 BTL	1.0	2	1	ECONOMY
4	1	2210000170	PABST 12/12 CAN	1.0	2	1	ECONOMY

Segment # 3 : 3_2 DEPTH: 24 in WIDTH: 28 in DISTANCE FROM TOP OF BASE SHELF TO BOTTOM OF SHELF:41.00 in

POS	# FAC	UPC	NAME	CASES	CAPACITY	UNITS HIGH	Category
1	1	1820053047	BUD LIGHT 12/12 CAN	1.5	3	1	PREMIUM
2	1	1820011047	BUD 12/12 CAN	1.5	3	1	PREMIUM
3	1	7199000048	COORS LIGHT 12/12 CAN	2.0	4	1	PREMIUM
4	1	3410057636	LITE 12/12 CAN	1.5	3	1	PREMIUM
5	1	7199030120	COORS LIGHT 3/24 CAN	0.5	2	1	PREMIUM

Segment # 3 : 3_1 DEPTH: 24 in WIDTH: 28 in DISTANCE FROM TOP OF BASE SHELF TO BOTTOM OF SHELF:53.50 in

POS	# FAC	UPC	NAME	CASES	CAPACITY	UNITS HIGH	Category
1	1	61300874829	ARNOLD PALMER SPIKED HALF AND HALF 1/24 CAN	0.7	8	1	ABOVE PREMIUM
2	1	7089701331	FOSTERS 1/25.4 CAN	0.6	7	1	ABOVE PREMIUM
3	1	7289000119	HEINEKEN 1/24 CAN	0.7	8	1	ABOVE PREMIUM
4	1	8066095643	CORONA 1/24 CAN	0.7	8	1	ABOVE PREMIUM
5	1	8066095721	MODELO ESPECIAL 1/24 CAN	0.7	8	1	ABOVE PREMIUM
6	1	1820025001	BUD LIGHT 1/25 CAN	0.5	8	1	PREMIUM
7	1	1820025000	BUD 1/25 CAN	0.5	8	1	PREMIUM
8	1	7199030065	COORS LIGHT 1/24 CAN	0.7	8	1	PREMIUM
9	1	7199010071	COORS BANQUET 1/24 CAN	0.7	8	1	PREMIUM

REVERSE VIEW (ONLY IF NEEDED)





CVS # 2780 COLD

Reset Timing 2019 SPRING

Address: 814 HEMPSTEAD AVE | City: WEST HEMPSTEAD | State: NY

REVERSE VIEW (ONLY IF NEEDED)

Segment:
1 of 3



Segment # 1 : 1_4 0.00 In

POS	UPC	NAME
1	7289000159	HEINEKEN LIGHT 12/ 12 BTL
2	7289000016	HEINEKEN 12/ 12 BTL
3	7289000020	HEINEKEN 12/ 12 CAN
4	8066095615	CORONA 12/ 12 BTL

Segment # 1 : 1_3 31.00 In

POS	UPC	NAME
1	75452700161	NEW BELGIUM FAT TIRE 12/ 12 CAN
2	75452700022	NEW BELGIUM FAT TIRE 6/ 12 BTL
3	72890000011	HEINEKEN 6/ 12 BTL
4	78615000014	STELLA ARTOIS 12/ 11.2 BTL
5	78615000001	STELLA ARTOIS 6/ 11.2 BTL

Segment # 1 : 1_2 43.00 In

POS	UPC	NAME
1	3410051681	CAPE LINE VARIETY PACK 12/ 12 CAN
2	8769200424	TRULY VARIETY PACK 12/ 12 CAN
3	63598554890	WHITE CLAW VARIETY PACK 12/ 12 CAN
4	3354400013	CORONA REFRESCA VARIETY 12/ 12 CAN

Segment # 1 : 1_1 53.50 In

POS	UPC	NAME
1	85389700227	BON AND VIV SPIKED SELTZER VARIETY 12/ 12 CAN
2	7199009511	BLUE MOON BELGIAN WHITE 6/ 12 BTL
3	8769210012	SAMUEL ADAMS BOSTON LAGER 6/ 12 BTL
4	8769230050	SAMUEL ADAMS SEASONAL 6/ 12 BTL (A)
5	86273700006	MONTAUK SUMMER 6/ 12 CAN (WRAP)



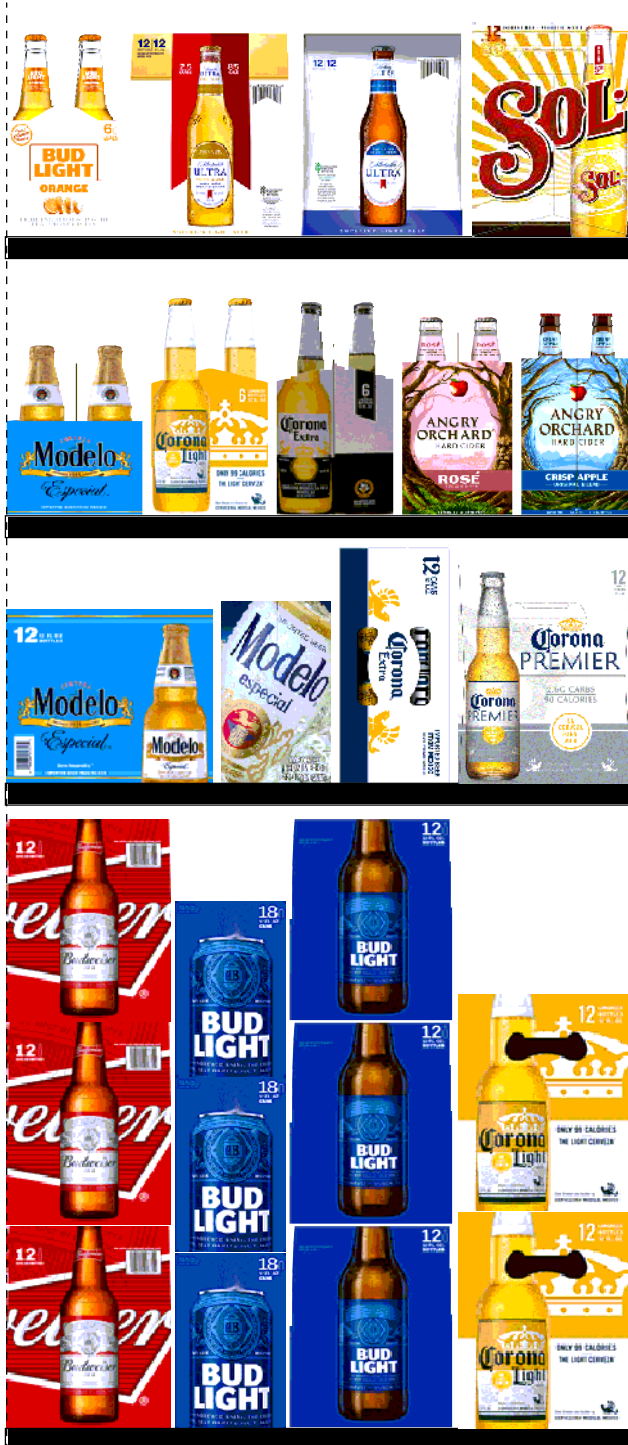
CVS # 2780 COLD

Reset Timing 2019 SPRING

Address: 814 HEMPSTEAD AVE | City: WEST HEMPSTEAD | State: NY

REVERSE VIEW (ONLY IF NEEDED)

Segment:
2 of 3



Segment # 2 : 2_4 0.00 In

POS	UPC	NAME
1	8066095675	CORONA LIGHT 12/ 12 BTL
2	1820000769	BUD LIGHT 12/ 12 BTL
3	1820053218	BUD LIGHT 18/ 12 CAN
4	1820000771	BUD 12/ 12 BTL

Segment # 2 : 2_3 29.00 In

POS	UPC	NAME
1	3354495042	CORONA PREMIER 12/ 12 BTL
2	8066095695	CORONA 12/ 12 CAN
3	8066095715	MODELO ESPECIAL 12/ 12 CAN
4	8066095757	MODELO ESPECIAL 12/ 12 BTL

Segment # 2 : 2_2 41.00 In

POS	UPC	NAME
1	8769282102	ANGRY ORCHARD CRISP APPLE 6/ 12 BTL
2	8769200660	ANGRY ORCHARD ROSE 6/ 12 BTL
3	8066095605	CORONA 6/ 12 BTL
4	8066095625	CORONA LIGHT 6/ 12 BTL
5	8066095765	MODELO ESPECIAL 6/ 12 BTL

Segment # 2 : 2_1 53.50 In

POS	UPC	NAME
1	7231123021	SOL 12/ 12 BTL
2	1820005990	MICHELOB ULTRA 12/ 12 BTL
3	1820020083	MICHELOB ULTRA PURE GOLD 12/ 12 BTL
4	1820020079	BUD LIGHT ORANGE 6/ 12 BTL



CVS # 2780 COLD

Reset Timing 2019 SPRING

Address: 814 HEMPSTEAD AVE | City: WEST HEMPSTEAD | State: NY

REVERSE VIEW (ONLY IF NEEDED)

Segment:
3 of 3



Segment # 3 : 3_4 0.00 In

POS	UPC	NAME
1	1820011218	BUD 18/ 12 CAN
2	7199030017	COORS LIGHT 18/ 12 CAN
3	3410057340	LITE 18/ 12 CAN
4	1820020077	NATURAL LIGHT 15/ 12 CAN
5	1820028443	NATURAL ICE 15/ 12 CAN

Segment # 3 : 3_3 29.00 In

POS	UPC	NAME
1	7199030069	COORS LIGHT 12/ 12 BTL
2	3410057509	LITE 12/ 12 BTL
3	3410001509	HIGH LIFE 12/ 12 BTL
4	2210000170	PABST 12/ 12 CAN

Segment # 3 : 3_2 41.00 In

POS	UPC	NAME
1	1820053047	BUD LIGHT 12/ 12 CAN
2	1820011047	BUD 12/ 12 CAN
3	7199000048	COORS LIGHT 12/ 12 CAN
4	3410057636	LITE 12/ 12 CAN
5	7199030120	COORS LIGHT 3/ 24 CAN

Segment # 3 : 3_1 53.50 In

POS	UPC	NAME
1	61300874829	ARNOLD PALMER SPIKED HALF AND HALF 1/24 CAN
2	7089701331	FOSTERS 1/25.4 CAN
3	7289000119	HEINEKEN 1/24 CAN
4	8066095643	CORONA 1/24 CAN
5	8066095721	MODELO ESPECIAL 1/24 CAN
6	1820025001	BUD LIGHT 1/25 CAN
7	1820025000	BUD 1/25 CAN
8	7199030065	COORS LIGHT 1/ 24 CAN
9	7199010071	COORS BANQUET 1/24 CAN



CVS # 2780 COLD

Address: 814 HEMPSTEAD AVE | City: WEST HEMPSTEAD | State: NY

Chain/StoreNumer: CVS - EAST 2780

Reset Name: 2019 SPRING

Planogram Name: 2780_3_DOOR_COLD

CVS PHARMA... Store # 2780 H: 5 ft 5.00 in W: 7 ft D: 2 ft # of segments: 3

Name: 1_1 W:28.00 in D:24.00 in Avail Space: 1.86 in Ht Space: 10.50 in

ID	UPC	Barcode	Name	Category	HFacings	Orientation	Units
19178	85389700227	8 53897 00227 1	BON AND VIV SPIKED SELTZE...	ABOVE PREMIUM	1	Front 90	3
10180	7199009511	0 71990 09511 6	BLUE MOON BELGIAN WHITE 6...	ABOVE PREMIUM	1	Side	3
21956	8769210012	0 87692 10012 6	SAMUEL ADAMS BOSTON LAG...	ABOVE PREMIUM	1	Side	3
21995	8769230050	0 87692 30050 2	SAMUEL ADAMS SEASONAL 6/...	ABOVE PREMIUM	1	Side	3
48714	86273700006	8 62737 00006 3	MONTAUK SUMMER 6/12 CAN (...)	ABOVE PREMIUM	1	Side	6

Name: 1_2 W:28.00 in D:24.00 in Avail Space: 1.52 in Ht Space: 9.50 in

ID	UPC	Barcode	Name	Category	HFacings	Orientation	Units
86788	3410051681	0 34100 51681 9	CAPE LINE VARIETY PACK 12/1...	ABOVE PREMIUM	1	Top 90	3
43031	8769200424	0 87692 00424 0	TRULY VARIETY PACK 12/12 C...	ABOVE PREMIUM	1	Top 90	3
45151	63598554890	6 35985 54890 4	WHITE CLAW VARIETY PACK 1...	ABOVE PREMIUM	1	Front 90	3
86777	3354400013	0 33544 00013 7	CORONA REFRESCA VARIETY...	ABOVE PREMIUM	1	Top 90	3

Name: 1_3 W:28.00 in D:24.00 in Avail Space: 0.98 in Ht Space: 11.00 in

ID	UPC	Barcode	Name	Category	HFacings	Orientation	Units
13037	75452700161	7 54527 00161 2	NEW BELGIUM FAT TIRE 12/12 ...	ABOVE PREMIUM	1	Side	2
13009	75452700022	7 54527 00022 6	NEW BELGIUM FAT TIRE 6/12 B...	ABOVE PREMIUM	1	Side	3
11298	7289000011	0 72890 00011 8	HEINEKEN 6/12 BTL	ABOVE PREMIUM	1	Side	3
14094	78615000014	7 86150 00014 4	STELLA ARTOIS 12/11.2 BTL	ABOVE PREMIUM	1	Side	2
14089	78615000001	7 86150 00001 4	STELLA ARTOIS 6/11.2 BTL	ABOVE PREMIUM	1	Side	3

Name: 1_4 W:28.00 in D:24.00 in Avail Space: 0.64 in Ht Space: 30.00 in

ID	UPC	Barcode	Name	Category	HFacings	Orientation	Units
----	-----	---------	------	----------	----------	-------------	-------



CVS # 2780 COLD

Address: 814 HEMPSTEAD AVE | City: WEST HEMPSTEAD | State: NY

Chain/StoreNumer: CVS - EAST 2780

Reset Name: 2019 SPRING

Planogram Name: 2780_3_DOOR_COLD

11342	7289000159		HEINEKEN LIGHT 12/12 BTL	ABOVE PREMIUM	1	Side	6
11300	7289000016		HEINEKEN 12/12 BTL	ABOVE PREMIUM	1	Side	6
11301	7289000020		HEINEKEN 12/12 CAN	ABOVE PREMIUM	1	Side	6
15403	8066095615		CORONA 12/12 BTL	ABOVE PREMIUM	1	Side	6

Name: 2_1 W:28.00 in D:24.00 in Avail Space: 1.24 in Ht Space: 10.50 in

ID	UPC	Barcode	Name	Category	HFacings	Orientation	Units
10790	7231123021		SOL 12/12 BTL	ABOVE PREMIUM	1	Side	2
1228	1820005990		MICHELOB ULTRA 12/12 BTL	ABOVE PREMIUM	1	Side	2
65828	1820020083		MICHELOB ULTRA PURE GOLD...	ABOVE PREMIUM	1	Side	2
67176	1820020079		BUD LIGHT ORANGE 6/12 BTL	ABOVE PREMIUM	1	Side	3

Name: 2_2 W:28.00 in D:24.00 in Avail Space: 1.29 in Ht Space: 11.50 in

ID	UPC	Barcode	Name	Category	HFacings	Orientation	Units
22090	8769282102		ANGRY ORCHARD CRISP APP...	ABOVE PREMIUM	1	Side	3
65019	8769200660		ANGRY ORCHARD ROSE 6/12 ...	ABOVE PREMIUM	1	Side	3
15400	8066095605		CORONA 6/12 BTL	ABOVE PREMIUM	1	Side	3
15408	8066095625		CORONA LIGHT 6/12 BTL	ABOVE PREMIUM	1	Side	3
15442	8066095765		MODELO ESPECIAL 6/12 BTL	ABOVE PREMIUM	1	Side	2

Name: 2_3 W:28.00 in D:24.00 in Avail Space: 1.18 in Ht Space: 11.00 in

ID	UPC	Barcode	Name	Category	HFacings	Orientation	Units
44952	3354495042		CORONA PREMIER 12/12 BTL	ABOVE PREMIUM	1	Side	2
15426	8066095695		CORONA 12/12 CAN	ABOVE PREMIUM	1	Top 90	3



CVS # 2780 COLD

Address: 814 HEMPSTEAD AVE | City: WEST HEMPSTEAD | State: NY

Chain/StoreNumer: CVS - EAST 2780

Reset Name: 2019 SPRING

Planogram Name: 2780_3_DOOR_COLD

15429	8066095715		MODELO ESPECIAL 12/12 CAN	ABOVE PREMIUM	1	Side	2
15436	8066095757		MODELO ESPECIAL 12/12 BTL	ABOVE PREMIUM	1	Side	1

Name: 2_4 W:28.00 in D:24.00 in Avail Space: 0.59 in Ht Space: 28.00 in

ID	UPC	Barcode	Name	Category	HFacings	Orientation	Units
15416	8066095675		CORONA LIGHT 12/12 BTL	ABOVE PREMIUM	1	Side	4
1056	1820000769		BUD LIGHT 12/12 BTL	PREMIUM	1	Side	6
1667	1820053218		BUD LIGHT 18/12 CAN	PREMIUM	1	Side	3
1058	1820000771		BUD 12/12 BTL	PREMIUM	1	Side	6

Name: 3_1 W:28.00 in D:24.00 in Avail Space: 1.67 in Ht Space: 10.50 in

ID	UPC	Barcode	Name	Category	HFacings	Orientation	Units
66064	61300874829		ARNOLD PALMER SPIKED HAL...	ABOVE PREMIUM	1	Front	8
9452	7089701331		FOSTERS 1/25.4 CAN	ABOVE PREMIUM	1	Front	7
11327	7289000119		HEINEKEN 1/24 CAN	ABOVE PREMIUM	1	Front	8
15415	8066095643		CORONA 1/24 CAN	ABOVE PREMIUM	1	Front	8
15431	8066095721		MODELO ESPECIAL 1/24 CAN	ABOVE PREMIUM	1	Front	8
1521	1820025001		BUD LIGHT 1/25 CAN	PREMIUM	1	Front	8
1520	1820025000		BUD 1/25 CAN	PREMIUM	1	Side	8
10346	7199030065		COORS LIGHT 1/24 CAN	PREMIUM	1	Front	8
10243	7199010071		COORS BANQUET 1/24 CAN	PREMIUM	1	Front	8

Name: 3_2 W:28.00 in D:24.00 in Avail Space: 2.80 in Ht Space: 11.50 in

ID	UPC	Barcode	Name	Category	HFacings	Orientation	Units
----	-----	---------	------	----------	----------	-------------	-------



CVS # 2780 COLD

Address: 814 HEMPSTEAD AVE | City: WEST HEMPSTEAD | State: NY

Chain/StoreNumer: CVS - EAST 2780

Reset Name: 2019 SPRING

Planogram Name: 2780_3_DOOR_COLD

1659	1820053047		BUD LIGHT 12/12 CAN	PREMIUM	1	Top 90	3
1297	1820011047		BUD 12/12 CAN	PREMIUM	1	Top 90	3
10164	7199000048		COORS LIGHT 12/12 CAN	PREMIUM	1	Side 90	4
3579	3410057636		LITE 12/12 CAN	PREMIUM	1	Top 90	3
10372	7199030120		COORS LIGHT 3/24 CAN	PREMIUM	1	Side	2

Name: 3_3 W:28.00 in D:24.00 in Avail Space: 0.99 in Ht Space: 11.00 in

ID	UPC	Barcode	Name	Category	HFacings	Orientation	Units
10348	7199030069		COORS LIGHT 12/12 BTL	PREMIUM	1	Side	2
3565	3410057509		LITE 12/12 BTL	PREMIUM	1	Side	2
3198	3410001509		HIGH LIFE 12/12 BTL	ECONOMY	1	Side	2
2241	2210000170		PABST 12/12 CAN	ECONOMY	1	Side	2

Name: 3_4 W:28.00 in D:24.00 in Avail Space: 3.09 in Ht Space: 28.00 in

ID	UPC	Barcode	Name	Category	HFacings	Orientation	Units
1307	1820011218		BUD 18/12 CAN	PREMIUM	1	Side	3
10329	7199030017		COORS LIGHT 18/12 CAN	PREMIUM	1	Side	3
3552	3410057340		LITE 18/12 CAN	PREMIUM	1	Side	3
61975	1820020077		NATURAL LIGHT 15/12 CAN	ECONOMY	1	Side	3
66288	1820028443		NATURAL ICE 15/12 CAN	ECONOMY	1	Side	3