





CVS # 2318 WARM

Address: 1760 5TH AVE | City: BRENTWOOD | State: NY

Chain/StoreNumer: CVS - EAST 2318

Reset Name: 2019 SPRING

Planogram Name: 2318_6FT_OPEN_WARM

Segment # 1 : 1_5 DEPTH: 18 in WIDTH: 72 in DISTANCE FROM TOP OF BASE SHELF TO BOTTOM OF SHELF:0.00 in

POS #	FAC	UPC	NAME	CASES	CAPACITY	UNITS HIGH	Category
1	1	8066095695	CORONA 12/12 CAN	2.0	4	1	ABOVE PREMIUM
2	2	8066095615	CORONA 12/12 BTL	2.0	4	2	ABOVE PREMIUM
3	1	8066095675	CORONA LIGHT 12/12 BTL	1.0	2	1	ABOVE PREMIUM
4	1	1820020077	NATURAL LIGHT 15/12 CAN	2.0	4	1	ECONOMY
5	1	1820028443	NATURAL ICE 15/12 CAN	2.0	4	1	ECONOMY

Segment # 1 : 1_4 DEPTH: 18 in WIDTH: 72 in DISTANCE FROM TOP OF BASE SHELF TO BOTTOM OF SHELF:12.00 in

POS #	FAC	UPC	NAME	CASES	CAPACITY	UNITS HIGH	Category
1	1	1820053218	BUD LIGHT 18/12 CAN	4.0	4	1	PREMIUM
2	1	1820011218	BUD 18/12 CAN	4.0	4	1	PREMIUM
3	1	7199030017	COORS LIGHT 18/12 CAN	4.0	4	1	PREMIUM
4	1	3410057340	LITE 18/12 CAN	4.0	4	1	PREMIUM
5	1	2210000170	PABST 12/12 CAN	1.0	2	1	ECONOMY

Segment # 1 : 1_3 DEPTH: 18 in WIDTH: 72 in DISTANCE FROM TOP OF BASE SHELF TO BOTTOM OF SHELF:24.00 in

POS #	FAC	UPC	NAME	CASES	CAPACITY	UNITS HIGH	Category
1	1	75452700690	NEW BELGIUM DAYBLAZER 15/12 CAN	1.0	4	1	ABOVE PREMIUM
2	1	8066095715	MODELO ESPECIAL 12/12 CAN	2.0	4	1	ABOVE PREMIUM
3	1	8066095757	MODELO ESPECIAL 12/12 BTL	1.0	2	1	ABOVE PREMIUM
4	1	1820011308	BUD 18/12 BTL	1.0	1	1	PREMIUM
5	1	1820053308	BUD LIGHT 18/12 BTL	1.0	1	1	PREMIUM
6	1	7199030078	COORS LIGHT 18/12 BTL	1.0	1	1	PREMIUM
7	1	3410001509	HIGH LIFE 12/12 BTL	1.0	2	1	ECONOMY

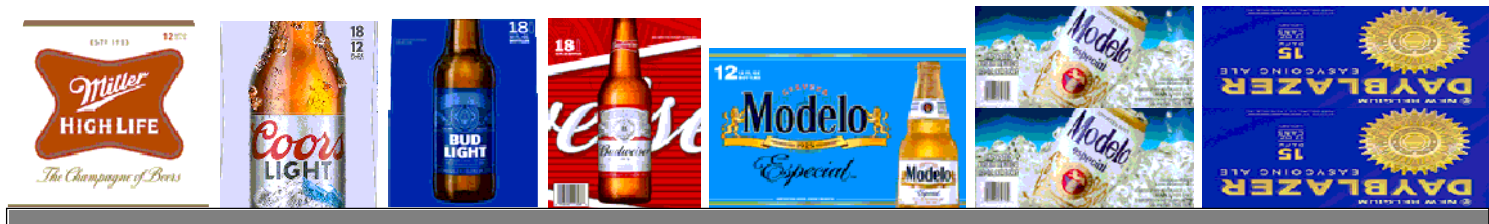
Segment # 1 : 1_2 DEPTH: 18 in WIDTH: 72 in DISTANCE FROM TOP OF BASE SHELF TO BOTTOM OF SHELF:36.00 in

POS #	FAC	UPC	NAME	CASES	CAPACITY	UNITS HIGH	Category
1	1	63598554890	WHITE CLAW VARIETY PACK 12/12 CAN	1.0	2	1	ABOVE PREMIUM
2	1	78615000014	STELLA ARTOIS 12/11.2 BTL	1.0	2	1	ABOVE PREMIUM
3	1	7289000020	HEINEKEN 12/12 CAN	2.0	4	1	ABOVE PREMIUM
4	1	7289000016	HEINEKEN 12/12 BTL	1.0	2	1	ABOVE PREMIUM
5	1	7289000159	HEINEKEN LIGHT 12/12 BTL	1.0	2	1	ABOVE PREMIUM
6	1	1820000769	BUD LIGHT 12/12 BTL	1.0	2	1	PREMIUM
7	1	7199030069	COORS LIGHT 12/12 BTL	1.0	2	1	PREMIUM

Segment # 1 : 1_1 DEPTH: 18 in WIDTH: 72 in DISTANCE FROM TOP OF BASE SHELF TO BOTTOM OF SHELF:48.00 in

POS #	FAC	UPC	NAME	CASES	CAPACITY	UNITS HIGH	Category
1	1	7199009511	BLUE MOON BELGIAN WHITE 6/12 BTL	0.5	2	1	ABOVE PREMIUM
2	1	8769230050	SAMUEL ADAMS SEASONAL 6/12 BTL (A)	0.5	2	1	ABOVE PREMIUM
3	1	78615000001	STELLA ARTOIS 6/11.2 BTL	0.5	2	1	ABOVE PREMIUM
4	1	1820020079	BUD LIGHT ORANGE 6/12 BTL	0.5	2	1	ABOVE PREMIUM
5	1	7289000011	HEINEKEN 6/12 BTL	0.5	2	1	ABOVE PREMIUM
6	1	8066095605	CORONA 6/12 BTL	0.5	2	1	ABOVE PREMIUM
7	1	1820053047	BUD LIGHT 12/12 CAN	2.0	4	1	PREMIUM
8	1	1820011047	BUD 12/12 CAN	2.0	4	1	PREMIUM
9	1	7199000048	COORS LIGHT 12/12 CAN	2.0	4	1	PREMIUM
10	1	3410057636	LITE 12/12 CAN	1.5	3	1	PREMIUM

REVERSE VIEW (ONLY IF NEEDED)





CVS # 2318 WARM

Reset Timing 2019 SPRING

Address: 1760 5TH AVE | City: BRENTWOOD | State: NY

REVERSE VIEW (ONLY IF NEEDED)

Segment:
1 of 1



Segment # 1 : 1_5 0.00 In

POS	UPC	NAME
1	8066095695	CORONA 12/ 12 CAN
2	8066095615	CORONA 12/ 12 BTL
3	8066095675	CORONA LIGHT 12/ 12 BTL
4	1820020077	NATURAL LIGHT 15/ 12 CAN
5	1820028443	NATURAL ICE 15/ 12 CAN

Segment # 1 : 1_4 12.00 In

POS	UPC	NAME
1	1820053218	BUD LIGHT 18/ 12 CAN
2	1820011218	BUD 18/ 12 CAN
3	7199030017	COORS LIGHT 18/ 12 CAN
4	3410057340	LITE 18/ 12 CAN
5	2210000170	PABST 12/ 12 CAN

Segment # 1 : 1_3 24.00 In

POS	UPC	NAME
1	75452700690	NEW BELGIUM DAYBLAZER 15/ 12 CAN
2	8066095715	MODELO ESPECIAL 12/ 12 CAN
3	8066095757	MODELO ESPECIAL 12/ 12 BTL
4	1820011308	BUD 18/ 12 BTL
5	1820053308	BUD LIGHT 18/ 12 BTL
6	7199030078	COORS LIGHT 18/ 12 BTL
7	3410001509	HIGH LIFE 12/ 12 BTL

Segment # 1 : 1_2 36.00 In

POS	UPC	NAME
1	63598554890	WHITE CLAW VARIETY PACK 12/ 12 CAN
2	78615000014	STELLA ARTOIS 12/ 11.2 BTL
3	7289000020	HEINEKEN 12/ 12 CAN
4	7289000016	HEINEKEN 12/ 12 BTL
5	7289000159	HEINEKEN LIGHT 12/ 12 BTL
6	1820000769	BUD LIGHT 12/ 12 BTL
7	7199030069	COORS LIGHT 12/ 12 BTL

Segment # 1 : 1_1 48.00 In

POS	UPC	NAME
1	7199009511	BLUE MOON BELGIAN WHITE 6/ 12 BTL
2	87692300050	SAMUEL ADAMS SEASONAL 6/ 12 BTL (A)
3	78615000001	STELLA ARTOIS 6/ 11.2 BTL
4	1820020079	BUD LIGHT ORANGE 6/ 12 BTL
5	7289000011	HEINEKEN 6/ 12 BTL
6	8066095605	CORONA 6/ 12 BTL
7	1820053047	BUD LIGHT 12/ 12 CAN
8	1820011047	BUD 12/ 12 CAN
9	7199000048	COORS LIGHT 12/ 12 CAN
10	3410057636	LITE 12/ 12 CAN



CVS # 2318 WARM

Address: 1760 5TH AVE | City: BRENTWOOD | State: NY

Chain/StoreNumer: CVS - EAST 2318

Reset Name: 2019 SPRING

Planogram Name: 2318_6FT_OPEN_WARM

CVS PHARMA... Store # 2318 H: 5 ft W: 6 ft D: 2 ft # of segments: 1

Name: 1_1 W:72.00 in D:18.00 in Avail Space: 2.95 in Ht Space: 11.00 in

ID	UPC	Barcode	Name	Category	HFacings	Orientation	Units
10180	7199009511		BLUE MOON BELGIAN WHITE 6...	ABOVE PREMIUM	1	Side	2
21995	8769230050		SAMUEL ADAMS SEASONAL 6/...	ABOVE PREMIUM	1	Side	2
14089	78615000001		STELLA ARTOIS 6/11.2 BTL	ABOVE PREMIUM	1	Side	2
67176	1820020079		BUD LIGHT ORANGE 6/12 BTL	ABOVE PREMIUM	1	Side	2
11298	7289000011		HEINEKEN 6/12 BTL	ABOVE PREMIUM	1	Side	2
15400	8066095605		CORONA 6/12 BTL	ABOVE PREMIUM	1	Side	2
1659	1820053047		BUD LIGHT 12/12 CAN	PREMIUM	1	Top	4
1297	1820011047		BUD 12/12 CAN	PREMIUM	1	Top	4
10164	7199000048		COORS LIGHT 12/12 CAN	PREMIUM	1	Top	4
3579	3410057636		LITE 12/12 CAN	PREMIUM	1	Side 90	3

Name: 1_2 W:72.00 in D:18.00 in Avail Space: 5.63 in Ht Space: 11.00 in

ID	UPC	Barcode	Name	Category	HFacings	Orientation	Units
45151	63598554890		WHITE CLAW VARIETY PACK 1...	ABOVE PREMIUM	1	Top 90	2
14094	78615000014		STELLA ARTOIS 12/11.2 BTL	ABOVE PREMIUM	1	Front	2
11301	7289000020		HEINEKEN 12/12 CAN	ABOVE PREMIUM	1	Top	4
11300	7289000016		HEINEKEN 12/12 BTL	ABOVE PREMIUM	1	Front	2
11342	7289000159		HEINEKEN LIGHT 12/12 BTL	ABOVE PREMIUM	1	Front	2



CVS # 2318 WARM

Address: 1760 5TH AVE | City: BRENTWOOD | State: NY

Chain/StoreNumer: CVS - EAST 2318

Reset Name: 2019 SPRING

Planogram Name: 2318_6FT_OPEN_WARM

1056	182000769		BUD LIGHT 12/12 BTL	PREMIUM	1	Front	2
10348	7199030069		COORS LIGHT 12/12 BTL	PREMIUM	1	Front	2

Name: 1_3 W:72.00 in D:18.00 in Avail Space: 2.82 in Ht Space: 11.00 in

ID	UPC	Barcode	Name	Category	HFacings	Orientation	Units
43247	75452700690		NEW BELGIUM DAYBLAZER 15...	ABOVE PREMIUM	1	Top	4
15429	8066095715		MODELO ESPECIAL 12/12 CAN	ABOVE PREMIUM	1	Top	4
15436	8066095757		MODELO ESPECIAL 12/12 BTL	ABOVE PREMIUM	1	Front	2
1310	1820011308		BUD 18/12 BTL	PREMIUM	1	Side	1
1670	1820053308		BUD LIGHT 18/12 BTL	PREMIUM	1	Side	1
10352	7199030078		COORS LIGHT 18/12 BTL	PREMIUM	1	Side	1
3198	3410001509		HIGH LIFE 12/12 BTL	ECONOMY	1	Front	2

Name: 1_4 W:72.00 in D:18.00 in Avail Space: 1.82 in Ht Space: 11.00 in

ID	UPC	Barcode	Name	Category	HFacings	Orientation	Units
1667	1820053218		BUD LIGHT 18/12 CAN	PREMIUM	1	Top	4
1307	1820011218		BUD 18/12 CAN	PREMIUM	1	Top	4
10329	7199030017		COORS LIGHT 18/12 CAN	PREMIUM	1	Top	4
3552	3410057340		LITE 18/12 CAN	PREMIUM	1	Top	4
2241	2210000170		PABST 12/12 CAN	ECONOMY	1	Side 90	2

Name: 1_5 W:72.00 in D:18.00 in Avail Space: 5.19 in Ht Space: 11.00 in

ID	UPC	Barcode	Name	Category	HFacings	Orientation	Units
15426	8066095695		CORONA 12/12 CAN	ABOVE PREMIUM	1	Top	4







CVS # 2318 WARM

Address: 1760 5TH AVE | City: BRENTWOOD | State: NY

Chain/StoreNumer: CVS - EAST 2318

Reset Name: 2019 SPRING

Planogram Name: 2318_6FT_OPEN_WARM

15403	8066095615	0		2	CORONA 12/12 BTL	ABOVE PREMIUM	2	Front	4
15416	8066095675	0		6	CORONA LIGHT 12/12 BTL	ABOVE PREMIUM	1	Front	2
61975	1820020077	0		9	NATURAL LIGHT 15/12 CAN	ECONOMY	1	Top	4
66288	1820028443	0		4	NATURAL ICE 15/12 CAN	ECONOMY	1	Top	4





CVS # 2318 COLD

Address: 1760 5TH AVE | City: BRENTWOOD | State: NY

Chain/StoreNumer: CVS - EAST 2318

Reset Name: 2019 SPRING

Planogram Name: 2318_4_DOOR_COLD

Segment # 1 : 1_6 DEPTH: 22 in WIDTH: 22 in DISTANCE FROM TOP OF BASE SHELF TO BOTTOM OF SHELF:0.00 in

POS #	FAC	UPC	NAME	CASES	CAPACITY	UNITS HIGH	Category
1	2	7289000016	HEINEKEN 12/12 BTL	4.0	8	2	ABOVE PREMIUM
2	1	7289000020	HEINEKEN 12/12 CAN	2.0	4	1	ABOVE PREMIUM

Segment # 1 : 1_5 DEPTH: 22 in WIDTH: 22 in DISTANCE FROM TOP OF BASE SHELF TO BOTTOM OF SHELF:21.00 in

POS #	FAC	UPC	NAME	CASES	CAPACITY	UNITS HIGH	Category
1	1	8248812300	BECKS 12/12 BTL	1.0	2	1	ABOVE PREMIUM
2	1	7289000159	HEINEKEN LIGHT 12/12 BTL	1.0	2	1	ABOVE PREMIUM
3	1	7289000188	HEINEKEN LIGHT 12/12 CAN	1.5	3	1	ABOVE PREMIUM

Segment # 1 : 1_4 DEPTH: 22 in WIDTH: 22 in DISTANCE FROM TOP OF BASE SHELF TO BOTTOM OF SHELF:33.00 in

POS #	FAC	UPC	NAME	CASES	CAPACITY	UNITS HIGH	Category
1	1	78615000014	STELLA ARTOIS 12/11.2 BTL	1.0	2	1	ABOVE PREMIUM
2	1	78615000001	STELLA ARTOIS 6/11.2 BTL	1.0	4	1	ABOVE PREMIUM
3	1	72890000011	HEINEKEN 6/12 BTL	0.8	3	1	ABOVE PREMIUM

Segment # 1 : 1_3 DEPTH: 22 in WIDTH: 22 in DISTANCE FROM TOP OF BASE SHELF TO BOTTOM OF SHELF:45.00 in

POS #	FAC	UPC	NAME	CASES	CAPACITY	UNITS HIGH	Category
1	1	8769210012	SAMUEL ADAMS BOSTON LAGER 6/12 BTL	0.8	3	1	ABOVE PREMIUM
2	1	86273700006	MONTAUK SUMMER 6/12 CAN (WRAP)	2.0	8	1	ABOVE PREMIUM
3	1	7199009516	BLUE MOON BELGIAN WHITE 12/12 BTL	1.0	2	1	ABOVE PREMIUM

Segment # 1 : 1_2 DEPTH: 22 in WIDTH: 22 in DISTANCE FROM TOP OF BASE SHELF TO BOTTOM OF SHELF:57.00 in

POS #	FAC	UPC	NAME	CASES	CAPACITY	UNITS HIGH	Category
1	1	68174511102	BLUE POINT HOPTICAL ILLUSION IPA 6/12 BTL	0.5	2	1	ABOVE PREMIUM
2	1	3410051605	LEINIES SEASONAL SHANDY 6/12 BTL	0.5	2	1	ABOVE PREMIUM
3	1	7199009511	BLUE MOON BELGIAN WHITE 6/12 BTL	0.5	2	1	ABOVE PREMIUM
4	1	7199009532	BLUE MOON SEASONAL 6/12 BTL	0.5	2	1	ABOVE PREMIUM

Segment # 1 : 1_1 DEPTH: 22 in WIDTH: 22 in DISTANCE FROM TOP OF BASE SHELF TO BOTTOM OF SHELF:69.00 in

POS #	FAC	UPC	NAME	CASES	CAPACITY	UNITS HIGH	Category
1	1	3410051681	CAPE LINE VARIETY PACK 12/12 CAN	1.5	3	1	ABOVE PREMIUM
2	1	8769200424	TRULY VARIETY PACK 12/12 CAN	1.5	3	1	ABOVE PREMIUM
3	1	63598554890	WHITE CLAW VARIETY PACK 12/12 CAN	1.5	3	1	ABOVE PREMIUM

Segment # 2 : 2_6 DEPTH: 22 in WIDTH: 22 in DISTANCE FROM TOP OF BASE SHELF TO BOTTOM OF SHELF:0.00 in

POS #	FAC	UPC	NAME	CASES	CAPACITY	UNITS HIGH	Category
1	1	8066095695	CORONA 12/12 CAN	2.0	4	1	ABOVE PREMIUM
2	2	8066095615	CORONA 12/12 BTL	4.0	8	2	ABOVE PREMIUM

Segment # 2 : 2_5 DEPTH: 22 in WIDTH: 22 in DISTANCE FROM TOP OF BASE SHELF TO BOTTOM OF SHELF:21.00 in

POS #	FAC	UPC	NAME	CASES	CAPACITY	UNITS HIGH	Category
-------	-----	-----	------	-------	----------	------------	----------



CVS # 2318 COLD

Address: 1760 5TH AVE | City: BRENTWOOD | State: NY

Chain/StoreNumer: CVS - EAST 2318

Reset Name: 2019 SPRING

Planogram Name: 2318_4_DOOR_COLD

1	1	8066095695	CORONA 12/12 CAN	1.0	2	1	ABOVE PREMIUM
2	2	8066095615	CORONA 12/12 BTL	2.0	4	2	ABOVE PREMIUM

Segment # 2 : 2_4 DEPTH: 22 in WIDTH: 22 in DISTANCE FROM TOP OF BASE SHELF TO BOTTOM OF SHELF:33.00 in

POS #	FAC	UPC	NAME	CASES	CAPACITY	UNITS HIGH	Category
1	1	8066095605	CORONA 6/12 BTL	0.5	2	1	ABOVE PREMIUM
2	1	3354495042	CORONA PREMIER 12/12 BTL	1.0	2	1	ABOVE PREMIUM
3	1	8066095675	CORONA LIGHT 12/12 BTL	1.0	2	1	ABOVE PREMIUM

Segment # 2 : 2_3 DEPTH: 22 in WIDTH: 22 in DISTANCE FROM TOP OF BASE SHELF TO BOTTOM OF SHELF:45.00 in

POS #	FAC	UPC	NAME	CASES	CAPACITY	UNITS HIGH	Category
1	1	8066095625	CORONA LIGHT 6/12 BTL	0.5	2	1	ABOVE PREMIUM
2	1	8066095621	CORONA LIGHT 12/12 CAN	1.5	3	1	ABOVE PREMIUM
3	1	8066095715	MODELO ESPECIAL 12/12 CAN	2.0	4	1	ABOVE PREMIUM

Segment # 2 : 2_2 DEPTH: 22 in WIDTH: 22 in DISTANCE FROM TOP OF BASE SHELF TO BOTTOM OF SHELF:57.00 in

POS #	FAC	UPC	NAME	CASES	CAPACITY	UNITS HIGH	Category
1	1	8066095757	MODELO ESPECIAL 12/12 BTL	1.0	2	1	ABOVE PREMIUM
2	1	8066095757	MODELO ESPECIAL 12/12 BTL	0.5	1	1	ABOVE PREMIUM

Segment # 2 : 2_1 DEPTH: 22 in WIDTH: 22 in DISTANCE FROM TOP OF BASE SHELF TO BOTTOM OF SHELF:69.00 in

POS #	FAC	UPC	NAME	CASES	CAPACITY	UNITS HIGH	Category
1	1	3354400013	CORONA REFRESCA VARIETY 12/12 CAN	1.0	2	1	ABOVE PREMIUM
2	1	85389700227	BON AND VIV SPIKED SELTZER VARIETY 12/12 CAN	1.5	3	1	ABOVE PREMIUM
3	1	8066095765	MODELO ESPECIAL 6/12 BTL	0.5	2	1	ABOVE PREMIUM

Segment # 3 : 3_6 DEPTH: 22 in WIDTH: 22 in DISTANCE FROM TOP OF BASE SHELF TO BOTTOM OF SHELF:0.00 in

POS #	FAC	UPC	NAME	CASES	CAPACITY	UNITS HIGH	Category
1	2	1820053218	BUD LIGHT 18/12 CAN	4.0	4	2	PREMIUM
2	2	1820011218	BUD 18/12 CAN	4.0	4	2	PREMIUM

Segment # 3 : 3_5 DEPTH: 22 in WIDTH: 22 in DISTANCE FROM TOP OF BASE SHELF TO BOTTOM OF SHELF:21.00 in

POS #	FAC	UPC	NAME	CASES	CAPACITY	UNITS HIGH	Category
1	1	1820096721	MICHELOB ULTRA 18/12 CAN	1.0	1	1	ABOVE PREMIUM
2	1	1820000769	BUD LIGHT 12/12 BTL	1.0	2	1	PREMIUM
3	1	1820000771	BUD 12/12 BTL	1.0	2	1	PREMIUM

Segment # 3 : 3_4 DEPTH: 22 in WIDTH: 22 in DISTANCE FROM TOP OF BASE SHELF TO BOTTOM OF SHELF:33.00 in

POS #	FAC	UPC	NAME	CASES	CAPACITY	UNITS HIGH	Category
1	1	1820005990	MICHELOB ULTRA 12/12 BTL	1.0	2	1	ABOVE PREMIUM
2	1	1820053047	BUD LIGHT 12/12 CAN	2.0	4	1	PREMIUM
3	1	1820011047	BUD 12/12 CAN	1.0	2	1	PREMIUM

Segment # 3 : 3_3 DEPTH: 22 in WIDTH: 22 in DISTANCE FROM TOP OF BASE SHELF TO BOTTOM OF SHELF:45.00 in



CVS # 2318 COLD

Address: 1760 5TH AVE | City: BRENTWOOD | State: NY

Chain/StoreNumer: CVS - EAST 2318

Reset Name: 2019 SPRING

Planogram Name: 2318_4_DOOR_COLD

POS	# FAC	UPC	NAME	CASES	CAPACITY	UNITS HIGH	Category
1	1	1820020083	MICHELOB ULTRA PURE GOLD 12/12 BTL	1.0	2	1	ABOVE PREMIUM
2	1	63598506744	MIKES HARD BLACK CHERRY LEMONADE 6/11.2 BTL	0.5	2	1	ABOVE PREMIUM
3	1	1820020079	BUD LIGHT ORANGE 6/12 BTL	1.0	4	1	ABOVE PREMIUM

Segment # 3 : 3_2 DEPTH: 22 in WIDTH: 22 in DISTANCE FROM TOP OF BASE SHELF TO BOTTOM OF SHELF:57.00 in

POS	# FAC	UPC	NAME	CASES	CAPACITY	UNITS HIGH	Category
1	1	7231123021	SOL 12/12 BTL	1.0	2	1	ABOVE PREMIUM
2	1	63598510062	MIKES HARD LEMONADE 6/11.2 BTL	0.5	2	1	ABOVE PREMIUM
3	1	63598512998	MIKES HARD VARIETY PACK 12/11.2 BTL	1.0	2	1	ABOVE PREMIUM

Segment # 3 : 3_1 DEPTH: 22 in WIDTH: 22 in DISTANCE FROM TOP OF BASE SHELF TO BOTTOM OF SHELF:69.00 in

POS	# FAC	UPC	NAME	CASES	CAPACITY	UNITS HIGH	Category
1	1	8769282102	ANGRY ORCHARD CRISP APPLE 6/12 BTL	1.0	4	1	ABOVE PREMIUM
2	1	8769200660	ANGRY ORCHARD ROSE 6/12 BTL	1.0	4	1	ABOVE PREMIUM
3	1	3410008716	REDDS 6/12 BTL	0.5	2	1	ABOVE PREMIUM

Segment # 4 : 4_6 DEPTH: 22 in WIDTH: 22 in DISTANCE FROM TOP OF BASE SHELF TO BOTTOM OF SHELF:0.00 in

POS	# FAC	UPC	NAME	CASES	CAPACITY	UNITS HIGH	Category
1	1	7143934450	ROLLING ROCK 12/12 CAN	2.0	4	1	ECONOMY
2	1	2210000170	PABST 12/12 CAN	2.0	4	1	ECONOMY
3	1	1820020077	NATURAL LIGHT 15/12 CAN	1.0	2	1	ECONOMY
4	1	1820028443	NATURAL ICE 15/12 CAN	1.0	2	1	ECONOMY

Segment # 4 : 4_5 DEPTH: 22 in WIDTH: 22 in DISTANCE FROM TOP OF BASE SHELF TO BOTTOM OF SHELF:21.00 in

POS	# FAC	UPC	NAME	CASES	CAPACITY	UNITS HIGH	Category
1	1	7199030078	COORS LIGHT 18/12 BTL	1.0	1	1	PREMIUM
2	1	7199030017	COORS LIGHT 18/12 CAN	2.0	2	1	PREMIUM
3	1	3410057340	LITE 18/12 CAN	1.0	1	1	PREMIUM

Segment # 4 : 4_4 DEPTH: 22 in WIDTH: 22 in DISTANCE FROM TOP OF BASE SHELF TO BOTTOM OF SHELF:33.00 in

POS	# FAC	UPC	NAME	CASES	CAPACITY	UNITS HIGH	Category
1	1	7199030069	COORS LIGHT 12/12 BTL	1.0	2	1	PREMIUM
2	1	7199000048	COORS LIGHT 12/12 CAN	1.0	2	1	PREMIUM
3	1	3410057509	LITE 12/12 BTL	1.0	2	1	PREMIUM

Segment # 4 : 4_3 DEPTH: 22 in WIDTH: 22 in DISTANCE FROM TOP OF BASE SHELF TO BOTTOM OF SHELF:45.00 in

POS	# FAC	UPC	NAME	CASES	CAPACITY	UNITS HIGH	Category
1	1	7199030120	COORS LIGHT 3/24 CAN	1.8	7	1	PREMIUM
2	1	3410057636	LITE 12/12 CAN	1.0	2	1	PREMIUM
3	1	3410001509	HIGH LIFE 12/12 BTL	1.0	2	1	ECONOMY

Segment # 4 : 4_2 DEPTH: 22 in WIDTH: 22 in DISTANCE FROM TOP OF BASE SHELF TO BOTTOM OF SHELF:57.00 in

POS	# FAC	UPC	NAME	CASES	CAPACITY	UNITS HIGH	Category
-----	-------	-----	------	-------	----------	------------	----------



CVS # 2318 COLD

Address: 1760 5TH AVE | City: BRENTWOOD | State: NY

Chain/StoreNumer: CVS - EAST 2318

Reset Name: 2019 SPRING

Planogram Name: 2318_4_DOOR_COLD

1	1	1820025001	BUD LIGHT 1/25 CAN	0.5	7	1	PREMIUM
2	1	1820025000	BUD 1/25 CAN	0.5	7	1	PREMIUM
3	1	7199010071	COORS BANQUET 1/24 CAN	0.6	7	1	PREMIUM
4	1	7199030065	COORS LIGHT 1/24 CAN	0.6	7	1	PREMIUM
5	1	1820025013	NATTY DADDY 1/25 CAN	0.6	7	1	ECONOMY
6	1	1820025006	BUD ICE 1/25 CAN	0.5	7	1	ECONOMY
7	1	7199047712	KEYSTONE ICE 1/24 CAN	0.6	7	1	ECONOMY

Segment # 4 : 4_1 DEPTH: 22 In WIDTH: 22 In DISTANCE FROM TOP OF BASE SHELF TO BOTTOM OF SHELF:69.00 In

POS	#	FAC	UPC	NAME	CASES	CAPACITY	UNITS HIGH	Category
1	1		3410000323	REDD'S WICKED 1/24 CAN	0.6	7	1	ABOVE PREMIUM
2	1		61300874829	ARNOLD PALMER SPIKED HALF AND HALF 1/24 CAN	0.6	7	1	ABOVE PREMIUM
3	1		8769283231	TWISTED TEA ORIGINAL 1/24 CAN	0.6	7	1	ABOVE PREMIUM
4	1		7289000119	HEINEKEN 1/24 CAN	0.6	7	1	ABOVE PREMIUM
5	1		7089701331	FOSTERS 1/25.4 CAN	0.5	6	1	ABOVE PREMIUM
6	1		8066095643	CORONA 1/24 CAN	0.6	7	1	ABOVE PREMIUM
7	1		8066095721	MODELO ESPECIAL 1/24 CAN	0.6	7	1	ABOVE PREMIUM

REVERSE VIEW (ONLY IF NEEDED)





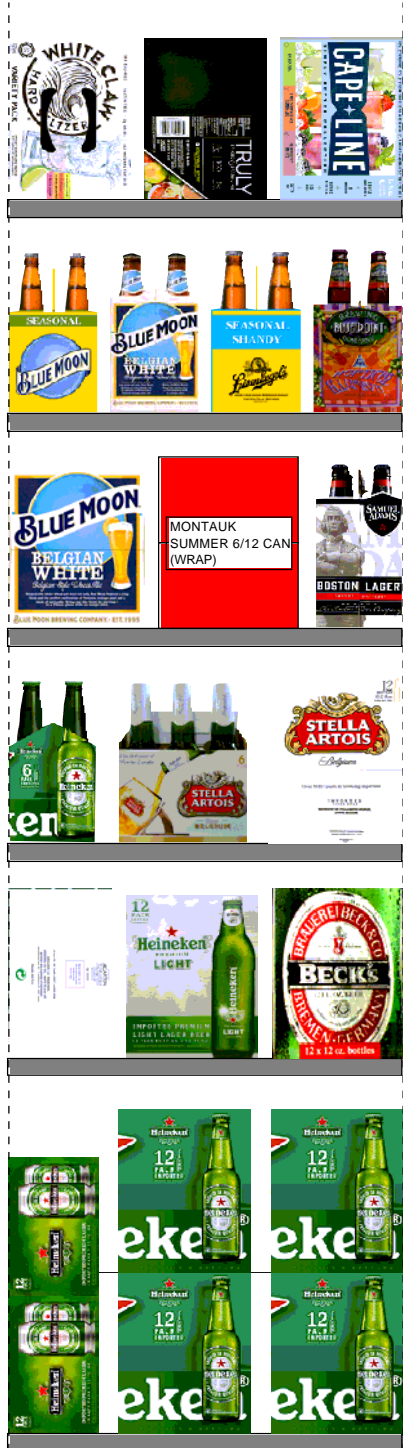
CVS # 2318 COLD

Reset Timing 2019 SPRING

Address: 1760 5TH AVE | City: BRENTWOOD | State: NY

REVERSE VIEW (ONLY IF NEEDED)

Segment:
1 of 4



Segment # 1 : 1_6 0.00 In

POS	UPC	NAME
1	728900016	HEINEKEN 12/ 12 BTL
2	728900020	HEINEKEN 12/ 12 CAN

Segment # 1 : 1_5 21.00 In

POS	UPC	NAME
1	8248812300	BECKS 12/ 12 BTL
2	7289000159	HEINEKEN LIGHT 12/ 12 BTL
3	7289000188	HEINEKEN LIGHT 12/ 12 CAN

Segment # 1 : 1_4 33.00 In

POS	UPC	NAME
1	7861500014	STELLA ARTOIS 12/ 11.2 BTL
2	7861500001	STELLA ARTOIS 6/ 11.2 BTL
3	7289000011	HEINEKEN 6/ 12 BTL

Segment # 1 : 1_3 45.00 In

POS	UPC	NAME
1	8769210012	SAMUEL ADAMS BOSTON LAGER 6/ 12 BTL
2	86273700006	MONTAUK SUMMER 6/ 12 CAN (WRAP)
3	7199009516	BLUE MOON BELGIAN WHITE 12/ 12 BTL

Segment # 1 : 1_2 57.00 In

POS	UPC	NAME
1	68174511102	BLUE POINT HOPTICAL ILLUSION IPA 6/ 12 BTL
2	3410051605	LEINIES SEASONAL SHANDY 6/ 12 BTL
3	7199009511	BLUE MOON BELGIAN WHITE 6/ 12 BTL
4	7199009532	BLUE MOON SEASONAL 6/ 12 BTL

Segment # 1 : 1_1 69.00 In

POS	UPC	NAME
1	3410051681	CAPE LINE VARIETY PACK 12/ 12 CAN
2	8769200424	TRULY VARIETY PACK 12/ 12 CAN
3	63598554890	WHITE CLAW VARIETY PACK 12/ 12 CAN



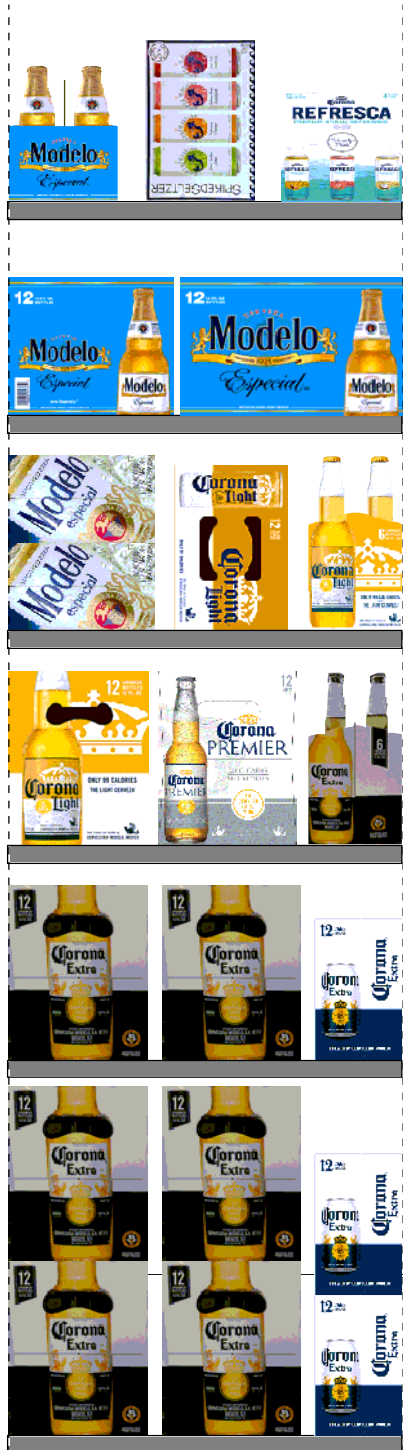
CVS # 2318 COLD

Reset Timing 2019 SPRING

Address: 1760 5TH AVE | City: BRENTWOOD | State: NY

REVERSE VIEW (ONLY IF NEEDED)

Segment:
2 of 4



Segment # 2 : 2_6 0.00 In

POS	UPC	NAME
1	8066095695	CORONA 12/ 12 CAN
2	8066095615	CORONA 12/ 12 BTL

Segment # 2 : 2_5 21.00 In

POS	UPC	NAME
1	8066095695	CORONA 12/ 12 CAN
2	8066095615	CORONA 12/ 12 BTL

Segment # 2 : 2_4 33.00 In

POS	UPC	NAME
1	8066095605	CORONA 6/ 12 BTL
2	3354495042	CORONA PREMIER 12/ 12 BTL
3	8066095675	CORONA LIGHT 12/ 12 BTL

Segment # 2 : 2_3 45.00 In

POS	UPC	NAME
1	8066095625	CORONA LIGHT 6/ 12 BTL
2	8066095621	CORONA LIGHT 12/ 12 CAN
3	8066095715	MODELO ESPECIAL 12/ 12 CAN

Segment # 2 : 2_2 57.00 In

POS	UPC	NAME
1	8066095757	MODELO ESPECIAL 12/ 12 BTL
2	8066095757	MODELO ESPECIAL 12/ 12 BTL

Segment # 2 : 2_1 69.00 In

POS	UPC	NAME
1	3354400013	CORONA REFRESCA VARIETY 12/ 12 CAN
2	85389700227	BON AND VIV SPIKED SELTZER VARIETY 12/ 12 CAN
3	8066095765	MODELO ESPECIAL 6/ 12 BTL



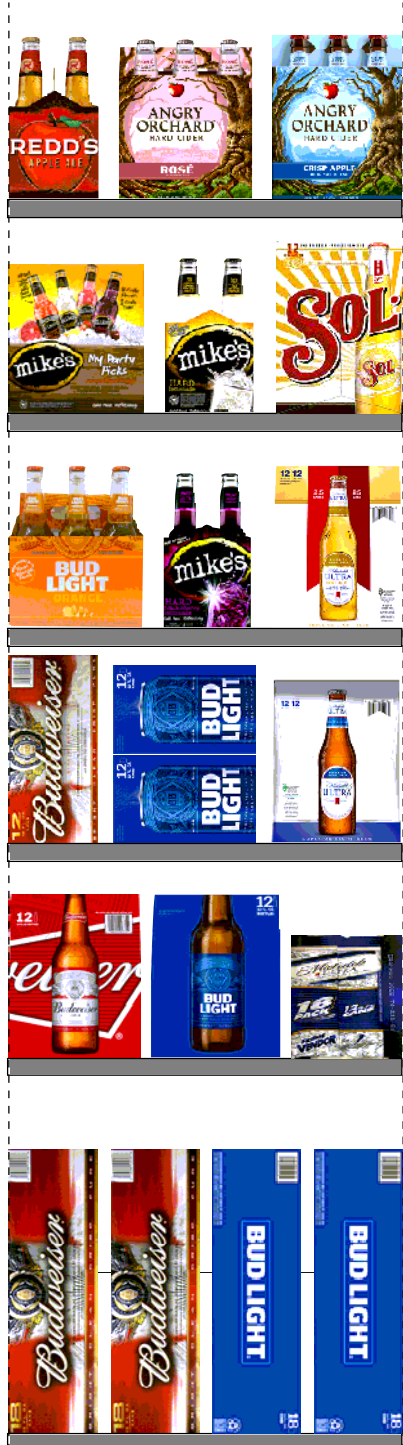
CVS # 2318 COLD

Reset Timing 2019 SPRING

Address: 1760 5TH AVE | City: BRENTWOOD | State: NY

REVERSE VIEW (ONLY IF NEEDED)

Segment:
3 of 4



Segment # 3 : 3_6 0.00 In

POS	UPC	NAME
1	1820053218	BUD LIGHT 18/ 12 CAN
2	1820011218	BUD 18/ 12 CAN

Segment # 3 : 3_5 21.00 In

POS	UPC	NAME
1	1820096721	MICHELOB ULTRA 18/ 12 CAN
2	1820000769	BUD LIGHT 12/ 12 BTL
3	1820000771	BUD 12/ 12 BTL

Segment # 3 : 3_4 33.00 In

POS	UPC	NAME
1	1820005990	MICHELOB ULTRA 12/ 12 BTL
2	1820053047	BUD LIGHT 12/ 12 CAN
3	1820011047	BUD 12/ 12 CAN

Segment # 3 : 3_3 45.00 In

POS	UPC	NAME
1	1820020083	MICHELOB ULTRA PURE GOLD 12/ 12 BTL
2	63598506744	MIKES HARD BLACK CHERRY LEMONADE 6/ 11.2 BTL
3	1820020079	BUD LIGHT ORANGE 6/ 12 BTL

Segment # 3 : 3_2 57.00 In

POS	UPC	NAME
1	7231123021	SOL 12/ 12 BTL
2	63598510062	MIKES HARD LEMONADE 6/ 11.2 BTL
3	63598512998	MIKES HARD VARIETY PACK 12/ 11.2 BTL

Segment # 3 : 3_1 69.00 In

POS	UPC	NAME
1	8769282102	ANGRY ORCHARD CRISP APPLE 6/ 12 BTL
2	8769200660	ANGRY ORCHARD ROSE 6/ 12 BTL
3	3410008716	REDD'S 6/ 12 BTL



CVS # 2318 COLD

Reset Timing 2019 SPRING

Address: 1760 5TH AVE | City: BRENTWOOD | State: NY

REVERSE VIEW (ONLY IF NEEDED)

Segment:
4 of 4



Segment # 4 : 4_6 0.00 In

POS	UPC	NAME
1	7143934450	ROLLING ROCK 12/ 12 CAN
2	2210000170	PABST 12/ 12 CAN
3	1820020077	NATURAL LIGHT 15/ 12 CAN
4	1820028443	NATURAL ICE 15/ 12 CAN

Segment # 4 : 4_5 21.00 In

POS	UPC	NAME
1	7199030078	COORS LIGHT 18/ 12 BTL
2	7199030017	COORS LIGHT 18/ 12 CAN
3	3410057340	LITE 18/ 12 CAN

Segment # 4 : 4_4 33.00 In

POS	UPC	NAME
1	7199030069	COORS LIGHT 12/ 12 BTL
2	7199000048	COORS LIGHT 12/ 12 CAN
3	3410057509	LITE 12/ 12 BTL

Segment # 4 : 4_3 45.00 In

POS	UPC	NAME
1	7199030120	COORS LIGHT 3/ 24 CAN
2	3410057636	LITE 12/ 12 CAN
3	3410001509	HIGH LIFE 12/ 12 BTL

Segment # 4 : 4_2 57.00 In

POS	UPC	NAME
1	1820025001	BUD LIGHT 1/ 25 CAN
2	1820025000	BUD 1/ 25 CAN
3	7199010071	COORS BANQUET 1/ 24 CAN
4	7199030065	COORS LIGHT 1/ 24 CAN
5	1820025013	NATTY DADDY 1/ 25 CAN
6	1820025006	BUD ICE 1/ 25 CAN
7	7199047712	KEYSTONE ICE 1/ 24 CAN

Segment # 4 : 4_1 69.00 In

POS	UPC	NAME
1	3410000323	REDD'S WICKED 1/ 24 CAN
2	613000874829	ARNOLD PALMER SPIKED HALF AND HALF 1/ 24 CAN
3	8769283231	TWISTED TEA ORIGINAL 1/ 24 CAN
4	7289000119	HEINEKEN 1/ 24 CAN
5	7089701331	FOSTERS 1/ 25.4 CAN
6	8066095643	CORONA 1/ 24 CAN
7	8066095721	MODELO ESPECIAL 1/ 24 CAN



CVS # 2318 COLD

Address: 1760 5TH AVE | City: BRENTWOOD | State: NY

Chain/StoreNumer: CVS - EAST 2318

Reset Name: 2019 SPRING

Planogram Name: 2318_4_DOOR_COLD

CVS PHARMA... Store # 2318 H: 6 ft 9.00 in W: 7 ft 4.00 in D: 1 ft 11.00 in # of segments: 4

Name: 1_1 W:22.00 in D:22.00 in Avail Space: 1.67 in Ht Space: 11.00 in

ID	UPC	Barcode	Name	Category	HFacings	Orientation	Units
86788	3410051681		CAPE LINE VARIETY PACK 12/1...	ABOVE PREMIUM	1	Top 90	3
43031	8769200424		TRULY VARIETY PACK 12/12 C...	ABOVE PREMIUM	1	Top 90	3
45151	63598554890		WHITE CLAW VARIETY PACK 1...	ABOVE PREMIUM	1	Top 90	3

Name: 1_2 W:22.00 in D:22.00 in Avail Space: 1.90 in Ht Space: 11.00 in

ID	UPC	Barcode	Name	Category	HFacings	Orientation	Units
7900	68174511102		BLUE POINT HOPTICAL ILLUSI...	ABOVE PREMIUM	1	Side	2
3492	3410051605		LEINIES SEASONAL SHANDY 6...	ABOVE PREMIUM	1	Side	2
10180	7199009511		BLUE MOON BELGIAN WHITE 6...	ABOVE PREMIUM	1	Side	2
10190	7199009532		BLUE MOON SEASONAL 6/12 B...	ABOVE PREMIUM	1	Side	2

Name: 1_3 W:22.00 in D:22.00 in Avail Space: 1.74 in Ht Space: 11.00 in

ID	UPC	Barcode	Name	Category	HFacings	Orientation	Units
21956	8769210012		SAMUEL ADAMS BOSTON LAG...	ABOVE PREMIUM	1	Side	3
48714	86273700006		MONTAUK SUMMER 6/12 CAN (...)	ABOVE PREMIUM	1	Front	8
10183	7199009516		BLUE MOON BELGIAN WHITE 1...	ABOVE PREMIUM	1	Side	2

Name: 1_4 W:22.00 in D:22.00 in Avail Space: 2.36 in Ht Space: 11.00 in

ID	UPC	Barcode	Name	Category	HFacings	Orientation	Units
14094	78615000014		STELLA ARTOIS 12/11.2 BTL	ABOVE PREMIUM	1	Side	2
14089	78615000001		STELLA ARTOIS 6/11.2 BTL	ABOVE PREMIUM	1	Front	4
11298	7289000011		HEINEKEN 6/12 BTL	ABOVE PREMIUM	1	Side	3

Name: 1_5 W:22.00 in D:22.00 in Avail Space: 1.74 in Ht Space: 11.00 in

ID	UPC	Barcode	Name	Category	HFacings	Orientation	Units
----	-----	---------	------	----------	----------	-------------	-------



CVS # 2318 COLD

Address: 1760 5TH AVE | City: BRENTWOOD | State: NY

Chain/StoreNumer: CVS - EAST 2318

Reset Name: 2019 SPRING

Planogram Name: 2318_4_DOOR_COLD

16691	8248812300		BECKS 12/12 BTL	ABOVE PREMIUM	1	Side	2
11342	7289000159		HEINEKEN LIGHT 12/12 BTL	ABOVE PREMIUM	1	Side	2
11348	7289000188		HEINEKEN LIGHT 12/12 CAN	ABOVE PREMIUM	1	Top 90	3

Name: 1_6 W:22.00 in D:22.00 in Avail Space: 2.40 in Ht Space: 20.00 in

ID	UPC	Barcode	Name	Category	HFacings	Orientation	Units
11300	7289000016		HEINEKEN 12/12 BTL	ABOVE PREMIUM	2	Side	8
11301	7289000020		HEINEKEN 12/12 CAN	ABOVE PREMIUM	1	Side	4

Name: 2_1 W:22.00 in D:22.00 in Avail Space: 3.04 in Ht Space: 11.00 in

ID	UPC	Barcode	Name	Category	HFacings	Orientation	Units
86777	3354400013		CORONA REFRESCA VARIETY...	ABOVE PREMIUM	1	Side	2
19178	85389700227		BON AND VIV SPIKED SELTZE...	ABOVE PREMIUM	1	Front 90	3
15442	8066095765		MODELO ESPECIAL 6/12 BTL	ABOVE PREMIUM	1	Side	2

Name: 2_2 W:22.00 in D:22.00 in Avail Space: 0.31 in Ht Space: 11.00 in

ID	UPC	Barcode	Name	Category	HFacings	Orientation	Units
15436	8066095757		MODELO ESPECIAL 12/12 BTL	ABOVE PREMIUM	1	Front	2
15436	8066095757		MODELO ESPECIAL 12/12 BTL	ABOVE PREMIUM	1	Side	1

Name: 2_3 W:22.00 in D:22.00 in Avail Space: 2.17 in Ht Space: 11.00 in

ID	UPC	Barcode	Name	Category	HFacings	Orientation	Units
15408	8066095625		CORONA LIGHT 6/12 BTL	ABOVE PREMIUM	1	Side	2
15406	8066095621		CORONA LIGHT 12/12 CAN	ABOVE PREMIUM	1	Top 90	3
15429	8066095715		MODELO ESPECIAL 12/12 CAN	ABOVE PREMIUM	1	Side 90	4

Name: 2_4 W:22.00 in D:22.00 in Avail Space: 1.17 in Ht Space: 11.00 in

ID	UPC	Barcode	Name	Category	HFacings	Orientation	Units
----	-----	---------	------	----------	----------	-------------	-------



CVS # 2318 COLD

Address: 1760 5TH AVE | City: BRENTWOOD | State: NY

Chain/StoreNumer: CVS - EAST 2318

Reset Name: 2019 SPRING

Planogram Name: 2318_4_DOOR_COLD

15400	8066095605		CORONA 6/12 BTL	ABOVE PREMIUM	1	Side	2
44952	3354495042		CORONA PREMIER 12/12 BTL	ABOVE PREMIUM	1	Side	2
15416	8066095675		CORONA LIGHT 12/12 BTL	ABOVE PREMIUM	1	Side	2

Name: 2_5 W:22.00 in D:22.00 in Avail Space: 1.57 in Ht Space: 11.00 in

ID	UPC	Barcode	Name	Category	HFacings	Orientation	Units
15426	8066095695		CORONA 12/12 CAN	ABOVE PREMIUM	1	Side	2
15403	8066095615		CORONA 12/12 BTL	ABOVE PREMIUM	2	Side	4

Name: 2_6 W:22.00 in D:22.00 in Avail Space: 1.57 in Ht Space: 20.00 in

ID	UPC	Barcode	Name	Category	HFacings	Orientation	Units
15426	8066095695		CORONA 12/12 CAN	ABOVE PREMIUM	1	Side	4
15403	8066095615		CORONA 12/12 BTL	ABOVE PREMIUM	2	Side	8

Name: 3_1 W:22.00 in D:22.00 in Avail Space: 2.15 in Ht Space: 11.00 in

ID	UPC	Barcode	Name	Category	HFacings	Orientation	Units
22090	8769282102		ANGRY ORCHARD CRISP APP...	ABOVE PREMIUM	1	Front	4
65019	8769200660		ANGRY ORCHARD ROSE 6/12 ...	ABOVE PREMIUM	1	Front	4
3255	3410008716		REDD'S 6/12 BTL	ABOVE PREMIUM	1	Side	2

Name: 3_2 W:22.00 in D:22.00 in Avail Space: 2.44 in Ht Space: 11.00 in

ID	UPC	Barcode	Name	Category	HFacings	Orientation	Units
10790	7231123021		SOL 12/12 BTL	ABOVE PREMIUM	1	Side	2
6413	63598510062		MIKES HARD LEMONADE 6/11....	ABOVE PREMIUM	1	Side	2
6433	63598512998		MIKES HARD VARIETY PACK 1...	ABOVE PREMIUM	1	Side	2

Name: 3_3 W:22.00 in D:22.00 in Avail Space: 2.19 in Ht Space: 11.00 in

ID	UPC	Barcode	Name	Category	HFacings	Orientation	Units
----	-----	---------	------	----------	----------	-------------	-------



CVS # 2318 COLD

Address: 1760 5TH AVE | City: BRENTWOOD | State: NY

Chain/StoreNumer: CVS - EAST 2318

Reset Name: 2019 SPRING

Planogram Name: 2318_4_DOOR_COLD

65828	1820020083		MICHELOB ULTRA PURE GOLD...	ABOVE PREMIUM	1	Side	2
6402	63598506744		MIKES HARD BLACK CHERRY L...	ABOVE PREMIUM	1	Side	2
67176	1820020079		BUD LIGHT ORANGE 6/12 BTL	ABOVE PREMIUM	1	Front	4

Name: 3_4 W:22.00 in D:22.00 in Avail Space: 1.83 in Ht Space: 11.00 in

ID	UPC	Barcode	Name	Category	HFacings	Orientation	Units
1228	1820005990		MICHELOB ULTRA 12/12 BTL	ABOVE PREMIUM	1	Side	2
1659	1820053047		BUD LIGHT 12/12 CAN	PREMIUM	1	Side 90	4
1297	1820011047		BUD 12/12 CAN	PREMIUM	1	Top 90	2

Name: 3_5 W:22.00 in D:22.00 in Avail Space: 1.11 in Ht Space: 11.00 in

ID	UPC	Barcode	Name	Category	HFacings	Orientation	Units
1850	1820096721		MICHELOB ULTRA 18/12 CAN	ABOVE PREMIUM	1	Side	1
1056	1820000769		BUD LIGHT 12/12 BTL	PREMIUM	1	Side	2
1058	1820000771		BUD 12/12 BTL	PREMIUM	1	Side	2

Name: 3_6 W:22.00 in D:22.00 in Avail Space: 2.20 in Ht Space: 20.00 in

ID	UPC	Barcode	Name	Category	HFacings	Orientation	Units
1667	1820053218		BUD LIGHT 18/12 CAN	PREMIUM	2	Top 90	4
1307	1820011218		BUD 18/12 CAN	PREMIUM	2	Top 90	4

Name: 4_1 W:22.00 in D:22.00 in Avail Space: 1.41 in Ht Space: 11.00 in

ID	UPC	Barcode	Name	Category	HFacings	Orientation	Units
2935	3410000323		REDD'S WICKED 1/24 CAN	ABOVE PREMIUM	1	Front	7
66064	61300874829		ARNOLD PALMER SPIKED HAL...	ABOVE PREMIUM	1	Front	7
22099	8769283231		TWISTED TEA ORIGINAL 1/24 C...	ABOVE PREMIUM	1	Side	7



CVS # 2318 COLD

Address: 1760 5TH AVE | City: BRENTWOOD | State: NY

Chain/StoreNumer: CVS - EAST 2318

Reset Name: 2019 SPRING

Planogram Name: 2318_4_DOOR_COLD

11327	7289000119		HEINEKEN 1/24 CAN	ABOVE PREMIUM	1	Side	7
9452	7089701331		FOSTERS 1/25.4 CAN	ABOVE PREMIUM	1	Side	6
15415	8066095643		CORONA 1/24 CAN	ABOVE PREMIUM	1	Side	7
15431	8066095721		MODELO ESPECIAL 1/24 CAN	ABOVE PREMIUM	1	Side	7

Name: 4_2 W:22.00 in D:22.00 in Avail Space: 1.97 in Ht Space: 11.00 in

ID	UPC	Barcode	Name	Category	HFacings	Orientation	Units
1521	1820025001		BUD LIGHT 1/25 CAN	PREMIUM	1	Side	7
1520	1820025000		BUD 1/25 CAN	PREMIUM	1	Side	7
10243	7199010071		COORS BANQUET 1/24 CAN	PREMIUM	1	Side	7
10346	7199030065		COORS LIGHT 1/24 CAN	PREMIUM	1	Side	7
1533	1820025013		NATTY DADDY 1/25 CAN	ECONOMY	1	Side	7
1526	1820025006		BUD ICE 1/25 CAN	ECONOMY	1	Front	7
10412	7199047712		KEYSTONE ICE 1/24 CAN	ECONOMY	1	Front	7

Name: 4_3 W:22.00 in D:22.00 in Avail Space: 1.21 in Ht Space: 11.00 in

ID	UPC	Barcode	Name	Category	HFacings	Orientation	Units
10372	7199030120		COORS LIGHT 3/24 CAN	PREMIUM	1	Front	7
3579	3410057636		LITE 12/12 CAN	PREMIUM	1	Top 90	2
3198	3410001509		HIGH LIFE 12/12 BTL	ECONOMY	1	Side	2

Name: 4_4 W:22.00 in D:22.00 in Avail Space: 1.94 in Ht Space: 11.00 in

ID	UPC	Barcode	Name	Category	HFacings	Orientation	Units
10348	7199030069		COORS LIGHT 12/12 BTL	PREMIUM	1	Side	2



CVS # 2318 COLD

Address: 1760 5TH AVE | City: BRENTWOOD | State: NY

Chain/StoreNumer: CVS - EAST 2318

Reset Name: 2019 SPRING

Planogram Name: 2318_4_DOOR_COLD

10164	7199000048		COORS LIGHT 12/12 CAN	PREMIUM	1	Top 90	2
3565	3410057509		LITE 12/12 BTL	PREMIUM	1	Side	2

Name: 4_5 W:22.00 in D:22.00 in Avail Space: 1.92 in Ht Space: 11.00 in

ID	UPC	Barcode	Name	Category	HFacings	Orientation	Units
10352	7199030078		COORS LIGHT 18/12 BTL	PREMIUM	1	Side	1
10329	7199030017		COORS LIGHT 18/12 CAN	PREMIUM	1	Side 90	2
3552	3410057340		LITE 18/12 CAN	PREMIUM	1	Side	1

Name: 4_6 W:22.00 in D:22.00 in Avail Space: 2.42 in Ht Space: 20.00 in

ID	UPC	Barcode	Name	Category	HFacings	Orientation	Units
9886	7143934450		ROLLING ROCK 12/12 CAN	ECONOMY	1	Side	4
2241	2210000170		PABST 12/12 CAN	ECONOMY	1	Side	4
61975	1820020077		NATURAL LIGHT 15/12 CAN	ECONOMY	1	Side	2
66288	1820028443		NATURAL ICE 15/12 CAN	ECONOMY	1	Side	2