





CVS # 5368 COLD

Address: 1220 PENINSULA BLVD | City: HEWLETT | State: NY

Chain/StoreNumer: CVS - EAST 5368

Reset Name: 2019 SPRING

Planogram Name: 5368_3_DOOR_COLD

Segment # 1		: 1_4		DEPTH: 24 in	WIDTH: 22 in	DISTANCE FROM TOP OF BASE SHELF TO BOTTOM OF SHELF:0.00 in		
POS #	FAC	UPC	NAME	CASES	CAPACITY	UNITS HIGH	Category	
1	1	7289000016	HEINEKEN 12/12 BTL	2.0	4	1	ABOVE PREMIUM	
2	1	78615000014	STELLA ARTOIS 12/11.2 BTL	2.0	4	1	ABOVE PREMIUM	
3	1	8066095715	MODELO ESPECIAL 12/12 CAN	2.0	4	1	ABOVE PREMIUM	

Segment # 1		: 1_3		DEPTH: 24 in	WIDTH: 22 in	DISTANCE FROM TOP OF BASE SHELF TO BOTTOM OF SHELF:20.00 in		
POS #	FAC	UPC	NAME	CASES	CAPACITY	UNITS HIGH	Category	
1	1	72890000159	HEINEKEN LIGHT 12/12 BTL	1.0	2	1	ABOVE PREMIUM	
2	1	8066095757	MODELO ESPECIAL 12/12 BTL	0.5	1	1	ABOVE PREMIUM	
3	1	8066095695	CORONA 12/12 CAN	1.0	2	1	ABOVE PREMIUM	

Segment # 1		: 1_2		DEPTH: 24 in	WIDTH: 22 in	DISTANCE FROM TOP OF BASE SHELF TO BOTTOM OF SHELF:31.00 in		
POS #	FAC	UPC	NAME	CASES	CAPACITY	UNITS HIGH	Category	
1	1	72890000020	HEINEKEN 12/12 CAN	1.0	2	1	ABOVE PREMIUM	
2	1	7199009511	BLUE MOON BELGIAN WHITE 6/12 BTL	0.8	3	1	ABOVE PREMIUM	
3	1	8769230050	SAMUEL ADAMS SEASONAL 6/12 BTL (A)	0.8	3	1	ABOVE PREMIUM	
4	1	3410051681	CAPE LINE VARIETY PACK 12/12 CAN	1.5	3	1	ABOVE PREMIUM	

Segment # 1		: 1_1		DEPTH: 24 in	WIDTH: 22 in	DISTANCE FROM TOP OF BASE SHELF TO BOTTOM OF SHELF:42.00 in		
POS #	FAC	UPC	NAME	CASES	CAPACITY	UNITS HIGH	Category	
1	1	72890000011	HEINEKEN 6/12 BTL	0.8	3	1	ABOVE PREMIUM	
2	1	78615000001	STELLA ARTOIS 6/11.2 BTL	0.8	3	1	ABOVE PREMIUM	
3	1	1820020079	BUD LIGHT ORANGE 6/12 BTL	0.8	3	1	ABOVE PREMIUM	
4	1	8769200424	TRULY VARIETY PACK 12/12 CAN	1.5	3	1	ABOVE PREMIUM	

Segment # 2		: 2_4		DEPTH: 24 in	WIDTH: 22 in	DISTANCE FROM TOP OF BASE SHELF TO BOTTOM OF SHELF:0.00 in		
POS #	FAC	UPC	NAME	CASES	CAPACITY	UNITS HIGH	Category	
1	1	8066095615	CORONA 12/12 BTL	2.5	5	1	ABOVE PREMIUM	
2	1	85389700227	BON AND VIV SPIKED SELTZER VARIETY 12/12 CAN	4.0	8	1	ABOVE PREMIUM	
3	1	1820053218	BUD LIGHT 18/12 CAN	3.0	3	1	PREMIUM	

Segment # 2		: 2_3		DEPTH: 24 in	WIDTH: 22 in	DISTANCE FROM TOP OF BASE SHELF TO BOTTOM OF SHELF:20.00 in		
POS #	FAC	UPC	NAME	CASES	CAPACITY	UNITS HIGH	Category	
1	1	8066095605	CORONA 6/12 BTL	0.8	3	1	ABOVE PREMIUM	
2	1	8066095675	CORONA LIGHT 12/12 BTL	1.0	2	1	ABOVE PREMIUM	
3	1	1820005990	MICHELOB ULTRA 12/12 BTL	1.0	2	1	ABOVE PREMIUM	

Segment # 2		: 2_2		DEPTH: 24 in	WIDTH: 22 in	DISTANCE FROM TOP OF BASE SHELF TO BOTTOM OF SHELF:31.00 in		
POS #	FAC	UPC	NAME	CASES	CAPACITY	UNITS HIGH	Category	
1	1	3354400013	CORONA REFRESCA VARIETY 12/12 CAN	2.0	4	1	ABOVE PREMIUM	
2	1	3354495042	CORONA PREMIER 12/12 BTL	1.0	2	1	ABOVE PREMIUM	
3	1	1820000769	BUD LIGHT 12/12 BTL	1.0	2	1	PREMIUM	



CVS # 5368 COLD

Address: 1220 PENINSULA BLVD | City: HEWLETT | State: NY

Chain/StoreNumer: CVS - EAST 5368

Reset Name: 2019 SPRING

Planogram Name: 5368_3_DOOR_COLD

Segment # 2 : 2_1 DEPTH: 24 In WIDTH: 22 In DISTANCE FROM TOP OF BASE SHELF TO BOTTOM OF SHELF:42.00 In

POS	# FAC	UPC	NAME	CASES	CAPACITY	UNITS HIGH	Category
1	1	63598554890	WHITE CLAW VARIETY PACK 12/12 CAN	1.5	3	1	ABOVE PREMIUM
2	1	7231123021	SOL 12/12 BTL	1.0	2	1	ABOVE PREMIUM
3	1	1820020083	MICHELOB ULTRA PURE GOLD 12/12 BTL	1.0	2	1	ABOVE PREMIUM

Segment # 3 : 3_4 DEPTH: 24 In WIDTH: 22 In DISTANCE FROM TOP OF BASE SHELF TO BOTTOM OF SHELF:0.00 In

POS	# FAC	UPC	NAME	CASES	CAPACITY	UNITS HIGH	Category
1	1	1820011218	BUD 18/12 CAN	3.0	3	1	PREMIUM
2	1	3410057340	LITE 18/12 CAN	3.0	3	1	PREMIUM
3	1	7199030017	COORS LIGHT 18/12 CAN	2.0	2	1	PREMIUM
5	1	1820028443	NATURAL ICE 15/12 CAN	0.5	1	1	ECONOMY
4	1	1820020077	NATURAL LIGHT 15/12 CAN	0.5	1	1	ECONOMY

Segment # 3 : 3_3 DEPTH: 24 In WIDTH: 22 In DISTANCE FROM TOP OF BASE SHELF TO BOTTOM OF SHELF:21.50 In

POS	# FAC	UPC	NAME	CASES	CAPACITY	UNITS HIGH	Category
1	1	1820011047	BUD 12/12 CAN	1.0	2	1	PREMIUM
2	1	3410057636	LITE 12/12 CAN	1.0	2	1	PREMIUM
3	1	7199000048	COORS LIGHT 12/12 CAN	1.0	2	1	PREMIUM
4	1	2210000170	PABST 12/12 CAN	1.0	2	1	ECONOMY

Segment # 3 : 3_2 DEPTH: 24 In WIDTH: 22 In DISTANCE FROM TOP OF BASE SHELF TO BOTTOM OF SHELF:31.00 In

POS	# FAC	UPC	NAME	CASES	CAPACITY	UNITS HIGH	Category
1	1	1820053047	BUD LIGHT 12/12 CAN	1.0	2	1	PREMIUM
2	1	7199030069	COORS LIGHT 12/12 BTL	1.0	2	1	PREMIUM
3	1	3410001509	HIGH LIFE 12/12 BTL	1.0	2	1	ECONOMY

Segment # 3 : 3_1 DEPTH: 24 In WIDTH: 22 In DISTANCE FROM TOP OF BASE SHELF TO BOTTOM OF SHELF:42.00 In

POS	# FAC	UPC	NAME	CASES	CAPACITY	UNITS HIGH	Category
1	1	61300874829	ARNOLD PALMER SPIKED HALF AND HALF 1/24 CAN	0.7	8	1	ABOVE PREMIUM
2	1	7289000119	HEINEKEN 1/24 CAN	0.7	8	1	ABOVE PREMIUM
3	1	8066095643	CORONA 1/24 CAN	0.7	8	1	ABOVE PREMIUM
4	1	1820025000	BUD 1/25 CAN	0.5	8	1	PREMIUM
5	1	7199030120	COORS LIGHT 3/24 CAN	0.5	2	1	PREMIUM
6	1	7199030065	COORS LIGHT 1/24 CAN	0.7	8	1	PREMIUM
7	1	7199010071	COORS BANQUET 1/24 CAN	0.7	8	1	PREMIUM

REVERSE VIEW (ONLY IF NEEDED)





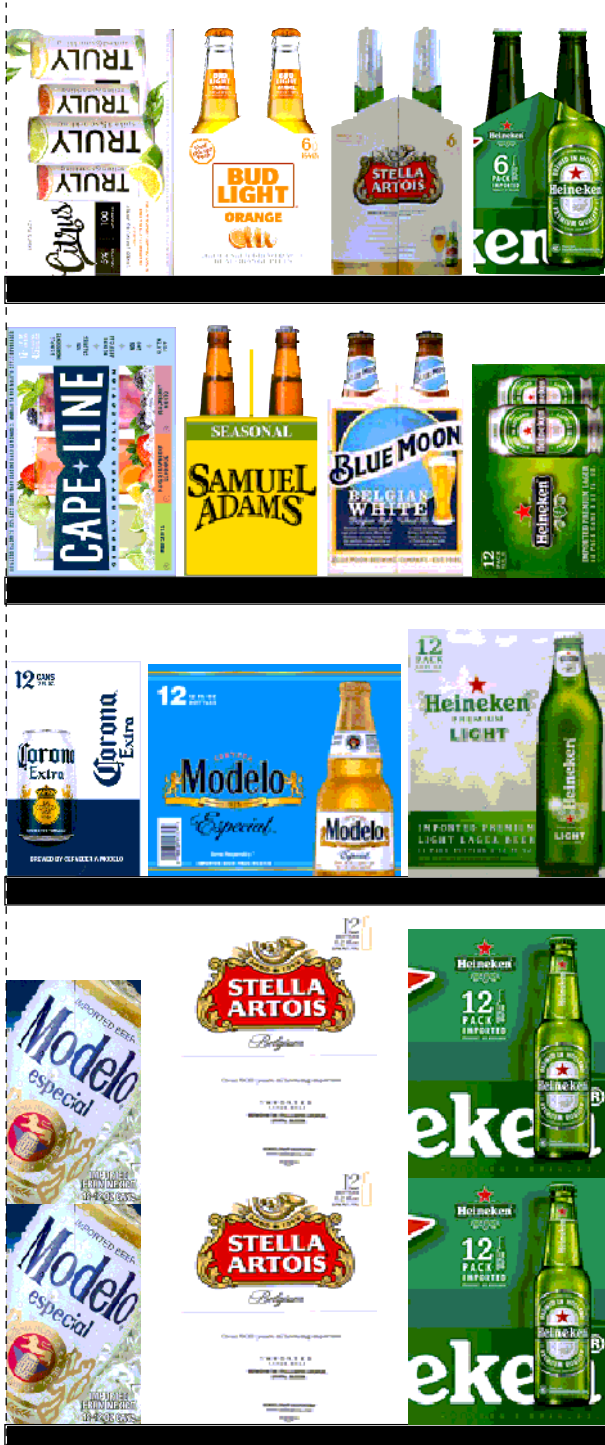
CVS # 5368 COLD

Reset Timing 2019 SPRING

Address: 1220 PENINSULA BLVD | City: HEWLETT | State: NY

REVERSE VIEW (ONLY IF NEEDED)

Segment:
1 of 3



Segment # 1 : 1_4 0.00 In

POS	UPC	NAME
1	7289000016	HEINEKEN 12/ 12 BTL
2	78615000014	STELLA ARTOIS 12/ 11.2 BTL
3	8066095715	MODELO ESPECIAL 12/ 12 CAN

Segment # 1 : 1_3 20.00 In

POS	UPC	NAME
1	7289000159	HEINEKEN LIGHT 12/ 12 BTL
2	8066095757	MODELO ESPECIAL 12/ 12 BTL
3	8066095695	CORONA 12/ 12 CAN

Segment # 1 : 1_2 31.00 In

POS	UPC	NAME
1	7289000020	HEINEKEN 12/ 12 CAN
2	7199009511	BLUE MOON BELGIAN WHITE 6/ 12 BTL
3	8769230050	SAMUEL ADAMS SEASONAL 6/ 12 BTL (A)
4	3410051681	CAPE LINE VARIETY PACK 12/ 12 CAN

Segment # 1 : 1_1 42.00 In

POS	UPC	NAME
1	7289000011	HEINEKEN 6/ 12 BTL
2	78615000001	STELLA ARTOIS 6/ 11.2 BTL
3	1820020079	BUD LIGHT ORANGE 6/ 12 BTL
4	8769200424	TRULY VARIETY PACK 12/ 12 CAN



CVS # 5368 COLD

Reset Timing 2019 SPRING

Address: 1220 PENINSULA BLVD | City: HEWLETT | State: NY

REVERSE VIEW (ONLY IF NEEDED)

Segment:
2 of 3



Segment # 2 : 2_4 0.00 In

POS	UPC	NAME
1	8066095615	CORONA 12/ 12 BTL
2	85389700227	BON AND VIV SPIKED SELTZER VARIETY 12/ 12 CAN
3	1820053218	BUD LIGHT 18/ 12 CAN

Segment # 2 : 2_3 20.00 In

POS	UPC	NAME
1	8066095605	CORONA 6/ 12 BTL
2	8066095675	CORONA LIGHT 12/ 12 BTL
3	1820005990	MICHELOB ULTRA 12/ 12 BTL

Segment # 2 : 2_2 31.00 In

POS	UPC	NAME
1	3354400013	CORONA REFRESCA VARIETY 12/ 12 CAN
2	3354495042	CORONA PREMIER 12/ 12 BTL
3	1820000769	BUD LIGHT 12/ 12 BTL

Segment # 2 : 2_1 42.00 In

POS	UPC	NAME
1	63598554890	WHITE CLAW VARIETY PACK 12/ 12 CAN
2	7231123021	SOL 12/ 12 BTL
3	1820020083	MICHELOB ULTRA PURE GOLD 12/ 12 BTL



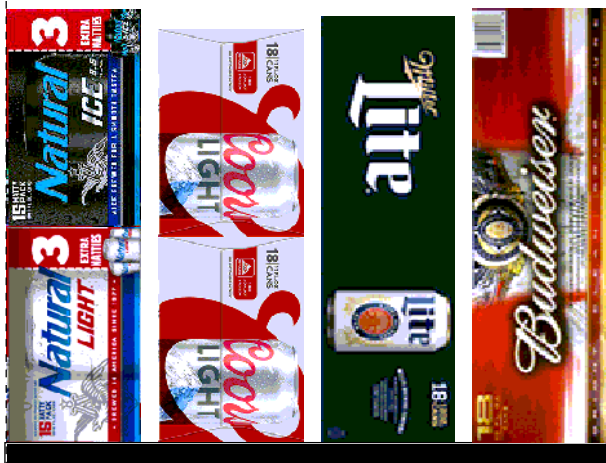
CVS # 5368 COLD

Reset Timing 2019 SPRING

Address: 1220 PENINSULA BLVD | City: HEWLETT | State: NY

REVERSE VIEW (ONLY IF NEEDED)

Segment:
3 of 3



Segment # 3 : 3_4 0.00 In

POS	UPC	NAME
1	1820011218	BUD 18/ 12 CAN
2	3410057340	LITE 18/ 12 CAN
3	7199030017	COORS LIGHT 18/ 12 CAN
5	1820028443	NATURAL ICE 15/ 12 CAN
4	1820020077	NATURAL LIGHT 15/ 12 CAN

Segment # 3 : 3_3 21.50 In

POS	UPC	NAME
1	1820011047	BUD 12/ 12 CAN
2	3410057636	LITE 12/ 12 CAN
3	7199000048	COORS LIGHT 12/ 12 CAN
4	2210000170	PABST 12/ 12 CAN

Segment # 3 : 3_2 31.00 In

POS	UPC	NAME
1	1820053047	BUD LIGHT 12/ 12 CAN
2	7199030069	COORS LIGHT 12/ 12 BTL
3	3410001509	HIGH LIFE 12/ 12 BTL

Segment # 3 : 3_1 42.00 In

POS	UPC	NAME
1	61300874829	ARNOLD PALMER SPIKED HALF AND HALF 1/24 CAN
2	7289000119	HEINEKEN 1/24 CAN
3	8066095643	CORONA 1/24 CAN
4	1820025000	BUD 1/ 25 CAN
5	7199030120	COORS LIGHT 3/ 24 CAN
6	7199030065	COORS LIGHT 1/ 24 CAN
7	7199010071	COORS BANQUET 1/24 CAN



CVS # 5368 COLD

Address: 1220 PENINSULA BLVD | City: HEWLETT | State: NY

Chain/StoreNumer: CVS - EAST 5368

Reset Name: 2019 SPRING

Planogram Name: 5368_3_DOOR_COLD

CVS PHARMA... Store # 5368 H: 4 ft 5.00 in W: 5 ft 6.00 in D: 2 ft # of segments: 3

Name: 1_1 W:22.00 in D:24.00 in Avail Space: 1.07 in Ht Space: 10.00 in

ID	UPC	Barcode	Name	Category	HFacings	Orientation	Units
11298	7289000011	0 72890 00011 8	HEINEKEN 6/12 BTL	ABOVE PREMIUM	1	Side	3
14089	78615000001	7 86150 00001 4	STELLA ARTOIS 6/11.2 BTL	ABOVE PREMIUM	1	Side	3
67176	1820020079	0 18200 20079 3	BUD LIGHT ORANGE 6/12 BTL	ABOVE PREMIUM	1	Side	3
43031	8769200424	0 87692 00424 0	TRULY VARIETY PACK 12/12 C...	ABOVE PREMIUM	1	Front 90	3

Name: 1_2 W:22.00 in D:24.00 in Avail Space: 0.91 in Ht Space: 10.00 in

ID	UPC	Barcode	Name	Category	HFacings	Orientation	Units
11301	7289000020	0 72890 00020 0	HEINEKEN 12/12 CAN	ABOVE PREMIUM	1	Side	2
10180	7199009511	0 71990 09511 6	BLUE MOON BELGIAN WHITE 6...	ABOVE PREMIUM	1	Side	3
21995	8769230050	0 87692 30050 2	SAMUEL ADAMS SEASONAL 6/...	ABOVE PREMIUM	1	Side	3
86788	3410051681	0 34100 51681 9	CAPE LINE VARIETY PACK 12/1...	ABOVE PREMIUM	1	Front 90	3

Name: 1_3 W:22.00 in D:24.00 in Avail Space: 0.53 in Ht Space: 10.00 in

ID	UPC	Barcode	Name	Category	HFacings	Orientation	Units
11342	7289000159	0 72890 00159 7	HEINEKEN LIGHT 12/12 BTL	ABOVE PREMIUM	1	Side	2
15436	8066095757	0 80660 95757 9	MODELO ESPECIAL 12/12 BTL	ABOVE PREMIUM	1	Side	1
15426	8066095695	0 80660 95695 4	CORONA 12/12 CAN	ABOVE PREMIUM	1	Side	2

Name: 1_4 W:22.00 in D:24.00 in Avail Space: 2.28 in Ht Space: 19.00 in

ID	UPC	Barcode	Name	Category	HFacings	Orientation	Units
11300	7289000016	0 72890 00016 3	HEINEKEN 12/12 BTL	ABOVE PREMIUM	1	Side	4
14094	78615000014	7 86150 00014 4	STELLA ARTOIS 12/11.2 BTL	ABOVE PREMIUM	1	Side	4
15429	8066095715	0 80660 95715 9	MODELO ESPECIAL 12/12 CAN	ABOVE PREMIUM	1	Side	4



CVS # 5368 COLD

Address: 1220 PENINSULA BLVD | City: HEWLETT | State: NY

Chain/StoreNumer: CVS - EAST 5368

Reset Name: 2019 SPRING

Planogram Name: 5368_3_DOOR_COLD

Name: 2_1		W:22.00 in	D:24.00 in	Avail Space: 1.45 in		Ht Space: 10.00 in	
ID	UPC	Barcode	Name	Category	HFacings	Orientation	Units
45151	63598554890		WHITE CLAW VARIETY PACK 1...	ABOVE PREMIUM	1	Front 90	3
10790	7231123021		SOL 12/12 BTL	ABOVE PREMIUM	1	Side	2
65828	1820020083		MICHELOB ULTRA PURE GOLD...	ABOVE PREMIUM	1	Side	2

Name: 2_2		W:22.00 in	D:24.00 in	Avail Space: 0.74 in		Ht Space: 10.00 in	
ID	UPC	Barcode	Name	Category	HFacings	Orientation	Units
86777	3354400013		CORONA REFRESCA VARIETY...	ABOVE PREMIUM	1	Front 90	4
44952	3354495042		CORONA PREMIER 12/12 BTL	ABOVE PREMIUM	1	Side	2
1056	1820000769		BUD LIGHT 12/12 BTL	PREMIUM	1	Side	2

Name: 2_3		W:22.00 in	D:24.00 in	Avail Space: 1.61 in		Ht Space: 10.00 in	
ID	UPC	Barcode	Name	Category	HFacings	Orientation	Units
15400	8066095605		CORONA 6/12 BTL	ABOVE PREMIUM	1	Side	3
15416	8066095675		CORONA LIGHT 12/12 BTL	ABOVE PREMIUM	1	Side	2
1228	1820005990		MICHELOB ULTRA 12/12 BTL	ABOVE PREMIUM	1	Side	2

Name: 2_4		W:22.00 in	D:24.00 in	Avail Space: 0.97 in		Ht Space: 19.00 in	
ID	UPC	Barcode	Name	Category	HFacings	Orientation	Units
15403	8066095615		CORONA 12/12 BTL	ABOVE PREMIUM	1	Front	5
19178	85389700227		BON AND VIV SPIKED SELTZE...	ABOVE PREMIUM	1	Front 90	8
1667	1820053218		BUD LIGHT 18/12 CAN	PREMIUM	1	Top 90	3

Name: 3_1		W:22.00 in	D:24.00 in	Avail Space: 1.83 in		Ht Space: 10.00 in	
ID	UPC	Barcode	Name	Category	HFacings	Orientation	Units
66064	61300874829		ARNOLD PALMER SPIKED HAL...	ABOVE PREMIUM	1	Front	8



CVS # 5368 COLD

Address: 1220 PENINSULA BLVD | City: HEWLETT | State: NY

Chain/StoreNumer: CVS - EAST 5368

Reset Name: 2019 SPRING

Planogram Name: 5368_3_DOOR_COLD

11327	7289000119		HEINEKEN 1/24 CAN	ABOVE PREMIUM	1	Front	8
15415	8066095643		CORONA 1/24 CAN	ABOVE PREMIUM	1	Front	8
1520	1820025000		BUD 1/25 CAN	PREMIUM	1	Side	8
10372	7199030120		COORS LIGHT 3/24 CAN	PREMIUM	1	Side	2
10346	7199030065		COORS LIGHT 1/24 CAN	PREMIUM	1	Front	8
10243	7199010071		COORS BANQUET 1/24 CAN	PREMIUM	1	Front	8

Name: 3_2 W:22.00 in D:24.00 in Avail Space: 2.25 in Ht Space: 10.00 in

ID	UPC	Barcode	Name	Category	HFacings	Orientation	Units
1659	1820053047		BUD LIGHT 12/12 CAN	PREMIUM	1	Side	2
10348	7199030069		COORS LIGHT 12/12 BTL	PREMIUM	1	Side	2
3198	3410001509		HIGH LIFE 12/12 BTL	ECONOMY	1	Side	2

Name: 3_3 W:22.00 in D:24.00 in Avail Space: 1.98 in Ht Space: 8.50 in

ID	UPC	Barcode	Name	Category	HFacings	Orientation	Units
1297	1820011047		BUD 12/12 CAN	PREMIUM	1	Side	2
3579	3410057636		LITE 12/12 CAN	PREMIUM	1	Side	2
10164	7199000048		COORS LIGHT 12/12 CAN	PREMIUM	1	Side	2
2241	2210000170		PABST 12/12 CAN	ECONOMY	1	Side	2

Name: 3_4 W:22.00 in D:24.00 in Avail Space: 1.98 in Ht Space: 20.50 in

ID	UPC	Barcode	Name	Category	HFacings	Orientation	Units
1307	1820011218		BUD 18/12 CAN	PREMIUM	1	Top 90	3
3552	3410057340		LITE 18/12 CAN	PREMIUM	1	Top 90	3






CVS # 5368 COLD

Address: 1220 PENINSULA BLVD | City: HEWLETT | State: NY

Chain/StoreNumer: CVS - EAST 5368

Reset Name: 2019 SPRING

Planogram Name: 5368_3_DOOR_COLD

10329	7199030017		COORS LIGHT 18/12 CAN	PREMIUM	1	Side	2
66288	1820028443		NATURAL ICE 15/12 CAN	ECONOMY	1	Side	1
61975	1820020077		NATURAL LIGHT 15/12 CAN	ECONOMY	1	Side	1