





CVS # 2225 COLD

Address: 232 SMITHTOWN BLVD | City: NESCONSET | State: NY

Chain/StoreNumer: CVS - EAST 2225

Reset Name: 2019 SPRING

Planogram Name: 2225\_2\_DOOR\_COLD

Segment # 1 : 1\_4 DEPTH: 22 In WIDTH: 23 In DISTANCE FROM TOP OF BASE SHELF TO BOTTOM OF SHELF:0.00 In

POS #	FAC	UPC	NAME	CASES	CAPACITY	UNITS HIGH	Category
1	1	7289000016	HEINEKEN 12/12 BTL	2.0	4	1	ABOVE PREMIUM
2	1	8066095675	CORONA LIGHT 12/12 BTL	1.0	2	1	ABOVE PREMIUM
3	1	3354495042	CORONA PREMIER 12/12 BTL	1.0	2	1	ABOVE PREMIUM
4	1	8066095615	CORONA 12/12 BTL	2.0	4	1	ABOVE PREMIUM

Segment # 1 : 1\_3 DEPTH: 22 In WIDTH: 23 In DISTANCE FROM TOP OF BASE SHELF TO BOTTOM OF SHELF:21.00 In

POS #	FAC	UPC	NAME	CASES	CAPACITY	UNITS HIGH	Category
1	1	85389700227	BON AND VIV SPIKED SELTZER VARIETY 12/12 CAN	1.5	3	1	ABOVE PREMIUM
2	1	7289000159	HEINEKEN LIGHT 12/12 BTL	1.0	2	1	ABOVE PREMIUM
3	1	78615000014	STELLA ARTOIS 12/11.2 BTL	1.0	2	1	ABOVE PREMIUM

Segment # 1 : 1\_2 DEPTH: 22 In WIDTH: 23 In DISTANCE FROM TOP OF BASE SHELF TO BOTTOM OF SHELF:32.00 In

POS #	FAC	UPC	NAME	CASES	CAPACITY	UNITS HIGH	Category
1	1	3354400013	CORONA REFRESCA VARIETY 12/12 CAN	1.0	2	1	ABOVE PREMIUM
2	1	7289000020	HEINEKEN 12/12 CAN	1.0	2	1	ABOVE PREMIUM
3	1	8066095715	MODELO ESPECIAL 12/12 CAN	1.0	2	1	ABOVE PREMIUM
4	1	8066095695	CORONA 12/12 CAN	1.0	2	1	ABOVE PREMIUM

Segment # 1 : 1\_1 DEPTH: 22 In WIDTH: 23 In DISTANCE FROM TOP OF BASE SHELF TO BOTTOM OF SHELF:42.00 In

POS #	FAC	UPC	NAME	CASES	CAPACITY	UNITS HIGH	Category
1	1	63598554890	WHITE CLAW VARIETY PACK 12/12 CAN	1.5	3	1	ABOVE PREMIUM
2	1	7199009511	BLUE MOON BELGIAN WHITE 6/12 BTL	0.5	2	1	ABOVE PREMIUM
3	1	68174511118	BLUE POINT SEASONAL 6/12 BTL	0.5	2	1	ABOVE PREMIUM
4	1	8066095605	CORONA 6/12 BTL	0.5	2	1	ABOVE PREMIUM

Segment # 2 : 2\_4 DEPTH: 22 In WIDTH: 23 In DISTANCE FROM TOP OF BASE SHELF TO BOTTOM OF SHELF:0.00 In

POS #	FAC	UPC	NAME	CASES	CAPACITY	UNITS HIGH	Category
1	1	1820053218	BUD LIGHT 18/12 CAN	2.0	2	1	PREMIUM
2	1	1820011218	BUD 18/12 CAN	2.0	2	1	PREMIUM
3	1	7199030017	COORS LIGHT 18/12 CAN	2.0	2	1	PREMIUM
4	1	3410057340	LITE 18/12 CAN	2.0	2	1	PREMIUM

Segment # 2 : 2\_3 DEPTH: 22 In WIDTH: 23 In DISTANCE FROM TOP OF BASE SHELF TO BOTTOM OF SHELF:18.00 In

POS #	FAC	UPC	NAME	CASES	CAPACITY	UNITS HIGH	Category
1	1	1820053047	BUD LIGHT 12/12 CAN	1.0	2	1	PREMIUM
2	1	1820011047	BUD 12/12 CAN	1.0	2	1	PREMIUM
3	1	7199000048	COORS LIGHT 12/12 CAN	1.0	2	1	PREMIUM
4	1	3410057636	LITE 12/12 CAN	1.0	2	1	PREMIUM

Segment # 2 : 2\_2 DEPTH: 22 In WIDTH: 23 In DISTANCE FROM TOP OF BASE SHELF TO BOTTOM OF SHELF:30.00 In

POS #	FAC	UPC	NAME	CASES	CAPACITY	UNITS HIGH	Category
1	1	7231123021	SOL 12/12 BTL	1.0	2	1	ABOVE PREMIUM



CVS # 2225 COLD

Address: 232 SMITHTOWN BLVD | City: NESCONSET | State: NY

Chain/StoreNumber: CVS - EAST 2225

Reset Name: 2019 SPRING

Planogram Name: 2225\_2\_DOOR\_COLD

2	1	1820000769	BUD LIGHT 12/12 BTL	1.0	2	1	PREMIUM
3	1	7199030069	COORS LIGHT 12/12 BTL	1.0	2	1	PREMIUM

Segment # 2 : 2\_1 DEPTH: 22 In WIDTH: 23 In DISTANCE FROM TOP OF BASE SHELF TO BOTTOM OF SHELF:42.00 In

POS	# FAC	UPC	NAME	CASES	CAPACITY	UNITS HIGH	Category
1	1	1820020077	NATURAL LIGHT 15/12 CAN	0.5	1	1	ECONOMY
2	1	61300874829	ARNOLD PALMER SPIKED HALF AND HALF 1/24 CAN	0.6	7	1	ABOVE PREMIUM
3	1	8066095643	CORONA 1/24 CAN	0.6	7	1	ABOVE PREMIUM
4	1	1820025001	BUD LIGHT 1/25 CAN	0.5	7	1	PREMIUM
5	1	1820025000	BUD 1/25 CAN	0.5	7	1	PREMIUM
6	1	7199010071	COORS BANQUET 1/24 CAN	0.6	7	1	PREMIUM
7	1	1820025013	NATTY DADDY 1/25 CAN	0.6	7	1	ECONOMY

# REVERSE VIEW (ONLY IF NEEDED)





CVS # 2225 COLD

Reset Timing 2019 SPRING

Address: 232 SMITHTOWN BLVD | City: NESCONSET | State: NY

**REVERSE VIEW (ONLY IF NEEDED)**

Segment:  
1 of 2



**Segment # 1 : 1\_4 0.00 In**

POS	UPC	NAME
1	728900016	HEINEKEN 12/ 12 BTL
2	8066095675	CORONA LIGHT 12/ 12 BTL
3	3354495042	CORONA PREMIER 12/ 12 BTL
4	8066095615	CORONA 12/ 12 BTL

**Segment # 1 : 1\_3 21.00 In**

POS	UPC	NAME
1	85389700227	BON AND VIV SPIKED SELTZER VARIETY 12/ 12 CAN
2	7289000159	HEINEKEN LIGHT 12/ 12 BTL
3	78615000014	STELLA ARTOIS 12/ 11.2 BTL

**Segment # 1 : 1\_2 32.00 In**

POS	UPC	NAME
1	3354400013	CORONA REFRESCA VARIETY 12/ 12 CAN
2	7289000020	HEINEKEN 12/ 12 CAN
3	8066095715	MODELO ESPECIAL 12/ 12 CAN
4	8066095695	CORONA 12/ 12 CAN

**Segment # 1 : 1\_1 42.00 In**

POS	UPC	NAME
1	63598554890	WHITE CLAW VARIETY PACK 12/ 12 CAN
2	7199009511	BLUE MOON BELGIAN WHITE 6/ 12 BTL
3	68174511118	BLUE POINT SEASONAL 6/ 12 BTL
4	8066095605	CORONA 6/ 12 BTL



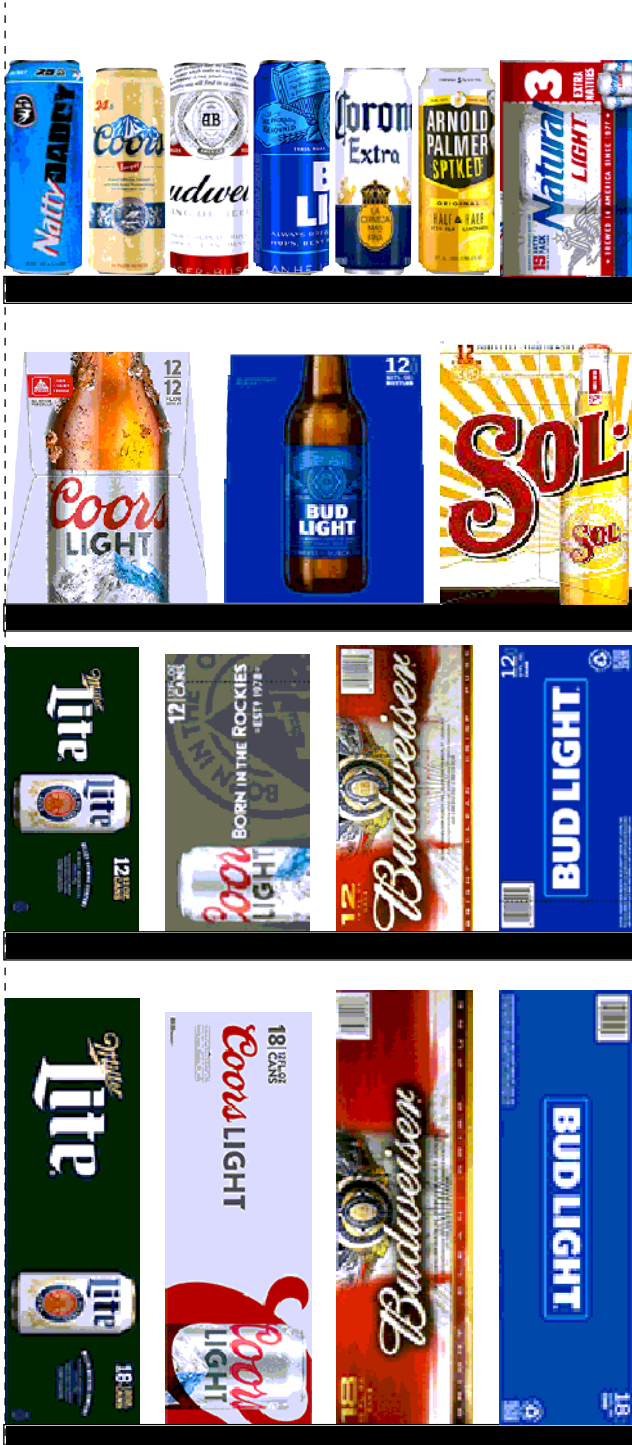
CVS # 2225 COLD

Reset Timing 2019 SPRING

Address: 232 SMITHTOWN BLVD | City: NESCONSET | State: NY

**REVERSE VIEW (ONLY IF NEEDED)**

Segment:  
2 of 2



**Segment # 2 : 2\_4 0.00 In**

POS	UPC	NAME
1	1820053218	BUD LIGHT 18/ 12 CAN
2	1820011218	BUD 18/ 12 CAN
3	7199030017	COORS LIGHT 18/ 12 CAN
4	3410057340	LITE 18/ 12 CAN

**Segment # 2 : 2\_3 18.00 In**

POS	UPC	NAME
1	1820053047	BUD LIGHT 12/ 12 CAN
2	1820011047	BUD 12/ 12 CAN
3	7199000048	COORS LIGHT 12/ 12 CAN
4	3410057636	LITE 12/ 12 CAN

**Segment # 2 : 2\_2 30.00 In**

POS	UPC	NAME
1	7231123021	SOL 12/ 12 BTL
2	1820000769	BUD LIGHT 12/ 12 BTL
3	7199030069	COORS LIGHT 12/ 12 BTL

**Segment # 2 : 2\_1 42.00 In**

POS	UPC	NAME
1	1820020077	NATURAL LIGHT 15/ 12 CAN
2	61300874829	ARNOLD PALMER SPIKED HALF AND HALF 1/24 CAN
3	8066095643	CORONA 1/24 CAN
4	1820025001	BUD LIGHT 1/25 CAN
5	1820025000	BUD 1/25 CAN
6	7199010071	COORS BANQUET 1/24 CAN
7	1820025013	NATTY DADDY 1/25 CAN



CVS # 2225 COLD

Address: 232 SMITHTOWN BLVD | City: NESCONSET | State: NY

Chain/StoreNumer: CVS - EAST 2225

Reset Name: 2019 SPRING

Planogram Name: 2225\_2\_DOOR\_COLD

CVS PHARMA... Store # 2225 H: 4 ft 5.00 in W: 3 ft 10.00 in D: 1 ft 10.00 in # of segments: 2

Name: 1\_1 W:23.00 in D:22.00 in Avail Space: 1.54 in Ht Space: 10.00 in

ID	UPC	Barcode	Name	Category	HFacings	Orientation	Units
45151	63598554890	6 35985 54890 4	WHITE CLAW VARIETY PACK 1...	ABOVE PREMIUM	1	Front 90	3
10180	7199009511	0 71990 09511 6	BLUE MOON BELGIAN WHITE 6...	ABOVE PREMIUM	1	Side	2
7908	68174511118	6 81745 11118 5	BLUE POINT SEASONAL 6/12 B...	ABOVE PREMIUM	1	Side	2
15400	8066095605	0 80660 95605 3	CORONA 6/12 BTL	ABOVE PREMIUM	1	Side	2

Name: 1\_2 W:23.00 in D:22.00 in Avail Space: 2.07 in Ht Space: 9.00 in

ID	UPC	Barcode	Name	Category	HFacings	Orientation	Units
86777	3354400013	0 33544 00013 7	CORONA REFRESCA VARIETY...	ABOVE PREMIUM	1	Side 90	2
11301	7289000020	0 72890 00020 0	HEINEKEN 12/12 CAN	ABOVE PREMIUM	1	Side	2
15429	8066095715	0 80660 95715 9	MODELO ESPECIAL 12/12 CAN	ABOVE PREMIUM	1	Side	2
15426	8066095695	0 80660 95695 4	CORONA 12/12 CAN	ABOVE PREMIUM	1	Side	2

Name: 1\_3 W:23.00 in D:22.00 in Avail Space: 2.13 in Ht Space: 10.00 in

ID	UPC	Barcode	Name	Category	HFacings	Orientation	Units
19178	85389700227	8 53897 00227 1	BON AND VIV SPIKED SELTZE...	ABOVE PREMIUM	1	Front 90	3
11342	7289000159	0 72890 00159 7	HEINEKEN LIGHT 12/12 BTL	ABOVE PREMIUM	1	Side	2
14094	78615000014	7 86150 00014 4	STELLA ARTOIS 12/11.2 BTL	ABOVE PREMIUM	1	Side	2

Name: 1\_4 W:23.00 in D:22.00 in Avail Space: 0.16 in Ht Space: 20.00 in

ID	UPC	Barcode	Name	Category	HFacings	Orientation	Units
11300	7289000016	0 72890 00016 3	HEINEKEN 12/12 BTL	ABOVE PREMIUM	1	Side	4
15416	8066095675	0 80660 95675 6	CORONA LIGHT 12/12 BTL	ABOVE PREMIUM	1	Side	2
44952	3354495042	0 33544 95042 5	CORONA PREMIER 12/12 BTL	ABOVE PREMIUM	1	Side	2



CVS # 2225 COLD

Address: 232 SMITHTOWN BLVD | City: NESCONSET | State: NY

Chain/StoreNumer: CVS - EAST 2225

Reset Name: 2019 SPRING

Planogram Name: 2225\_2\_DOOR\_COLD

15403	8066095615		0 80660 95615 2	CORONA 12/12 BTL	ABOVE PREMIUM	1	Side	4
-------	------------	--	-----------------	------------------	---------------	---	------	---

Name: 2\_1 W:23.00 in D:22.00 in Avail Space: 0.90 in Ht Space: 10.00 in

ID	UPC	Barcode	Name	Category	HFacings	Orientation	Units	
61975	1820020077		0 18200 20077 9	NATURAL LIGHT 15/12 CAN	ECONOMY	1	Side	1
66064	61300874829		6 13008 74829 6	ARNOLD PALMER SPIKED HAL...	ABOVE PREMIUM	1	Front	7
15415	8066095643		0 80660 95643 5	CORONA 1/24 CAN	ABOVE PREMIUM	1	Side	7
1521	1820025001		0 18200 25001 9	BUD LIGHT 1/25 CAN	PREMIUM	1	Front	7
1520	1820025000		0 18200 25000 2	BUD 1/25 CAN	PREMIUM	1	Front	7
10243	7199010071		0 71990 10071 1	COORS BANQUET 1/24 CAN	PREMIUM	1	Front	7
1533	1820025013		0 18200 25013 2	NATTY DADDY 1/25 CAN	ECONOMY	1	Side	7

Name: 2\_2 W:23.00 in D:22.00 in Avail Space: 1.14 in Ht Space: 11.00 in

ID	UPC	Barcode	Name	Category	HFacings	Orientation	Units	
10790	7231123021		0 72311 23021 6	SOL 12/12 BTL	ABOVE PREMIUM	1	Side	2
1056	1820000769		0 18200 00769 9	BUD LIGHT 12/12 BTL	PREMIUM	1	Side	2
10348	7199030069		0 71990 30069 2	COORS LIGHT 12/12 BTL	PREMIUM	1	Side	2

Name: 2\_3 W:23.00 in D:22.00 in Avail Space: 2.93 in Ht Space: 11.00 in

ID	UPC	Barcode	Name	Category	HFacings	Orientation	Units	
1659	1820053047		0 18200 53047 0	BUD LIGHT 12/12 CAN	PREMIUM	1	Top 90	2
1297	1820011047		0 18200 11047 4	BUD 12/12 CAN	PREMIUM	1	Top 90	2
10164	7199000048		0 71990 00048 6	COORS LIGHT 12/12 CAN	PREMIUM	1	Top 90	2
3579	3410057636		0 34100 57636 3	LITE 12/12 CAN	PREMIUM	1	Top 90	2









CVS # 2225 COLD

Address: 232 SMITHTOWN BLVD | City: NESCONSET | State: NY

Chain/StoreNumer: CVS - EAST 2225

Reset Name: 2019 SPRING

Planogram Name: 2225\_2\_DOOR\_COLD

Name: 2_4		W:23.00 in		D:22.00 in		Avail Space: 2.92 in		Ht Space: 17.00 in	
ID	UPC	Barcode	Name	Category	HFacings	Orientation	Units		
1667	1820053218	 0 18200 53218 4	BUD LIGHT 18/12 CAN	PREMIUM	1	Top 90	2		
1307	1820011218	 0 18200 11218 8	BUD 18/12 CAN	PREMIUM	1	Top 90	2		
10329	7199030017	 0 71990 30017 3	COORS LIGHT 18/12 CAN	PREMIUM	1	Top 90	2		
3552	3410057340	 0 34100 57340 9	LITE 18/12 CAN	PREMIUM	1	Top 90	2		