



CVS # 2726 COLD

Address: 6221 ROUTE 25A | City: WADING RIVER | State: NY

Chain/StoreNumer: CVS - EAST 2726

Reset Name: 2019 SPRING

Planogram Name: 2726_2_DOOR_COLD

| Segment # 1 | | : 1_4 | | DEPTH: 22 In | WIDTH: 23 In | DISTANCE FROM TOP OF BASE SHELF TO BOTTOM OF SHELF:0.00 In | | |
|-------------|-----|------------|--------------------------|--------------|--------------|--|---------------|--|
| POS # | FAC | UPC | NAME | CASES | CAPACITY | UNITS HIGH | Category | |
| 1 | 1 | 7289000159 | HEINEKEN LIGHT 12/12 BTL | 2.0 | 4 | 1 | ABOVE PREMIUM | |
| 2 | 1 | 7289000016 | HEINEKEN 12/12 BTL | 2.0 | 4 | 1 | ABOVE PREMIUM | |
| 3 | 1 | 1820005990 | MICHELOB ULTRA 12/12 BTL | 2.0 | 4 | 1 | ABOVE PREMIUM | |

| Segment # 1 | | : 1_3 | | DEPTH: 22 In | WIDTH: 23 In | DISTANCE FROM TOP OF BASE SHELF TO BOTTOM OF SHELF:20.00 In | | |
|-------------|-----|-------------|-----------------------------------|--------------|--------------|---|---------------|--|
| POS # | FAC | UPC | NAME | CASES | CAPACITY | UNITS HIGH | Category | |
| 1 | 1 | 63598554890 | WHITE CLAW VARIETY PACK 12/12 CAN | 1.5 | 3 | 1 | ABOVE PREMIUM | |
| 2 | 1 | 8066095675 | CORONA LIGHT 12/12 BTL | 1.0 | 2 | 1 | ABOVE PREMIUM | |
| 3 | 1 | 8066095615 | CORONA 12/12 BTL | 1.0 | 2 | 1 | ABOVE PREMIUM | |

| Segment # 1 | | : 1_2 | | DEPTH: 22 In | WIDTH: 23 In | DISTANCE FROM TOP OF BASE SHELF TO BOTTOM OF SHELF:31.00 In | | |
|-------------|-----|-------------|---------------------------|--------------|--------------|---|---------------|--|
| POS # | FAC | UPC | NAME | CASES | CAPACITY | UNITS HIGH | Category | |
| 1 | 1 | 78615000014 | STELLA ARTOIS 12/11.2 BTL | 1.0 | 2 | 1 | ABOVE PREMIUM | |
| 2 | 1 | 3354495042 | CORONA PREMIER 12/12 BTL | 1.0 | 2 | 1 | ABOVE PREMIUM | |
| 3 | 1 | 7231123021 | SOL 12/12 BTL | 1.0 | 2 | 1 | ABOVE PREMIUM | |

| Segment # 1 | | : 1_1 | | DEPTH: 22 In | WIDTH: 23 In | DISTANCE FROM TOP OF BASE SHELF TO BOTTOM OF SHELF:42.00 In | | |
|-------------|-----|-------------|--|--------------|--------------|---|---------------|--|
| POS # | FAC | UPC | NAME | CASES | CAPACITY | UNITS HIGH | Category | |
| 1 | 1 | 8066095605 | CORONA 6/12 BTL | 0.5 | 2 | 1 | ABOVE PREMIUM | |
| 2 | 1 | 8066095695 | CORONA 12/12 CAN | 1.0 | 2 | 1 | ABOVE PREMIUM | |
| 3 | 1 | 85389700227 | BON AND VIV SPIKED SELTZER VARIETY 12/12 CAN | 1.5 | 3 | 1 | ABOVE PREMIUM | |
| 4 | 1 | 3354400013 | CORONA REFRESCA VARIETY 12/12 CAN | 1.5 | 3 | 1 | ABOVE PREMIUM | |

| Segment # 2 | | : 2_4 | | DEPTH: 22 In | WIDTH: 23 In | DISTANCE FROM TOP OF BASE SHELF TO BOTTOM OF SHELF:0.00 In | | |
|-------------|-----|------------|-----------------------|--------------|--------------|--|----------|--|
| POS # | FAC | UPC | NAME | CASES | CAPACITY | UNITS HIGH | Category | |
| 1 | 1 | 1820053218 | BUD LIGHT 18/12 CAN | 2.0 | 2 | 1 | PREMIUM | |
| 2 | 1 | 1820011218 | BUD 18/12 CAN | 2.0 | 2 | 1 | PREMIUM | |
| 3 | 1 | 7199030017 | COORS LIGHT 18/12 CAN | 2.0 | 2 | 1 | PREMIUM | |
| 4 | 1 | 3410057340 | LITE 18/12 CAN | 2.0 | 2 | 1 | PREMIUM | |

| Segment # 2 | | : 2_3 | | DEPTH: 22 In | WIDTH: 23 In | DISTANCE FROM TOP OF BASE SHELF TO BOTTOM OF SHELF:18.00 In | | |
|-------------|-----|------------|-----------------------|--------------|--------------|---|----------|--|
| POS # | FAC | UPC | NAME | CASES | CAPACITY | UNITS HIGH | Category | |
| 1 | 1 | 1820053047 | BUD LIGHT 12/12 CAN | 1.0 | 2 | 1 | PREMIUM | |
| 2 | 1 | 1820011047 | BUD 12/12 CAN | 1.0 | 2 | 1 | PREMIUM | |
| 3 | 1 | 7199000048 | COORS LIGHT 12/12 CAN | 1.0 | 2 | 1 | PREMIUM | |
| 4 | 1 | 3410057636 | LITE 12/12 CAN | 1.0 | 2 | 1 | PREMIUM | |

| Segment # 2 | | : 2_2 | | DEPTH: 22 In | WIDTH: 23 In | DISTANCE FROM TOP OF BASE SHELF TO BOTTOM OF SHELF:30.00 In | | |
|-------------|-----|------------|----------------------------------|--------------|--------------|---|---------------|--|
| POS # | FAC | UPC | NAME | CASES | CAPACITY | UNITS HIGH | Category | |
| 1 | 1 | 8066095715 | MODELO ESPECIAL 12/12 CAN | 1.0 | 2 | 1 | ABOVE PREMIUM | |
| 2 | 1 | 7199009511 | BLUE MOON BELGIAN WHITE 6/12 BTL | 0.5 | 2 | 1 | ABOVE PREMIUM | |
| 3 | 1 | 7199030069 | COORS LIGHT 12/12 BTL | 1.0 | 2 | 1 | PREMIUM | |



CVS # 2726 COLD

Address: 6221 ROUTE 25A | City: WADING RIVER | State: NY

Chain/StoreNumber: CVS - EAST 2726

Reset Name: 2019 SPRING

Planogram Name: 2726_2_DOOR_COLD

4 1 2210000170 PABST 12/12 CAN 1.0 2 1 ECONOMY

Segment # 2 : 2_1 DEPTH: 22 In WIDTH: 23 In DISTANCE FROM TOP OF BASE SHELF TO BOTTOM OF SHELF:42.00 In

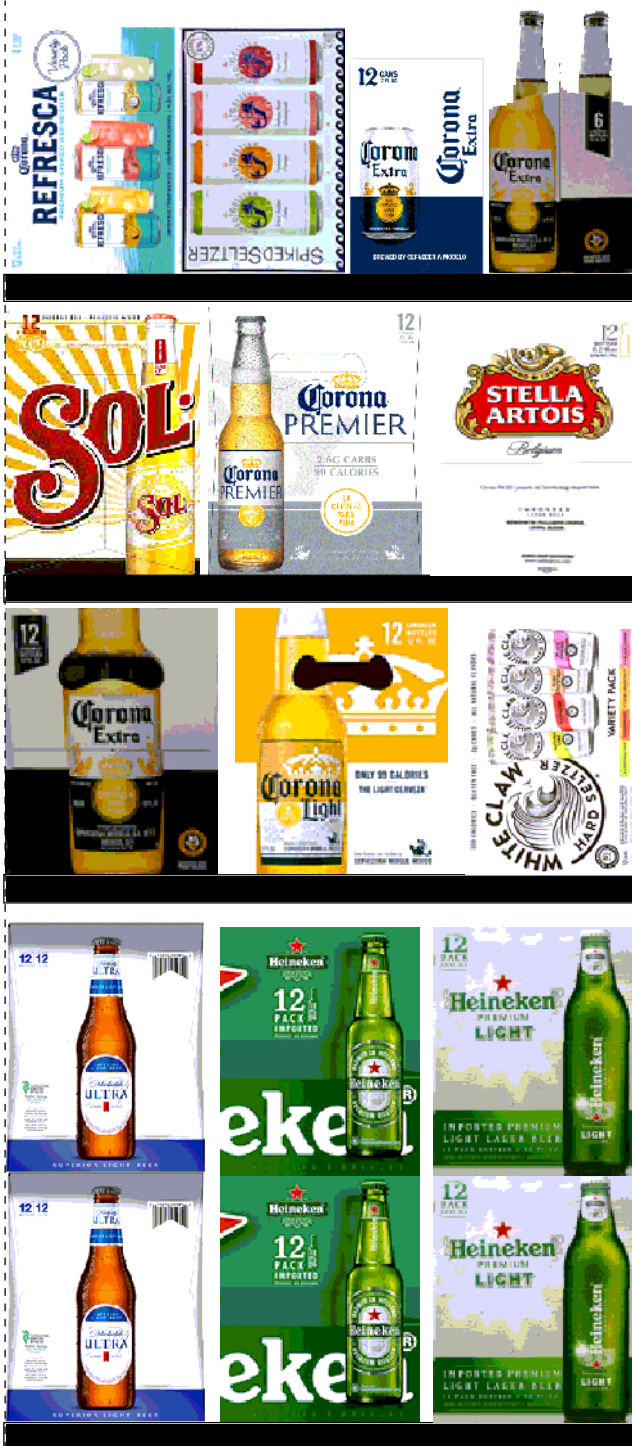
| POS # | FAC | UPC | NAME | CASES | CAPACITY | UNITS HIGH | Category |
|-------|-----|-------------|---|-------|----------|------------|---------------|
| 1 | 1 | 3410001509 | HIGH LIFE 12/12 BTL | 1.0 | 2 | 1 | ECONOMY |
| 2 | 1 | 61300874829 | ARNOLD PALMER SPIKED HALF AND HALF 1/24 CAN | 0.6 | 7 | 1 | ABOVE PREMIUM |
| 3 | 1 | 1820025001 | BUD LIGHT 1/25 CAN | 0.5 | 7 | 1 | PREMIUM |
| 4 | 1 | 1820025000 | BUD 1/25 CAN | 0.5 | 7 | 1 | PREMIUM |
| 5 | 1 | 7199030065 | COORS LIGHT 1/24 CAN | 0.6 | 7 | 1 | PREMIUM |
| 6 | 1 | 7199010071 | COORS BANQUET 1/24 CAN | 0.6 | 7 | 1 | PREMIUM |

REVERSE VIEW (ONLY IF NEEDED)



REVERSE VIEW (ONLY IF NEEDED)

Segment:
1 of 2



Segment # 1 : 1_4 0.00 In

| POS | UPC | NAME |
|-----|------------|---------------------------|
| 1 | 7289000159 | HEINEKEN LIGHT 12/ 12 BTL |
| 2 | 7289000016 | HEINEKEN 12/ 12 BTL |
| 3 | 1820005990 | MICHELOB ULTRA 12/ 12 BTL |

Segment # 1 : 1_3 20.00 In

| POS | UPC | NAME |
|-----|-------------|------------------------------------|
| 1 | 63598554890 | WHITE CLAW VARIETY PACK 12/ 12 CAN |
| 2 | 8066095675 | CORONA LIGHT 12/ 12 BTL |
| 3 | 8066095615 | CORONA 12/ 12 BTL |

Segment # 1 : 1_2 31.00 In

| POS | UPC | NAME |
|-----|-------------|----------------------------|
| 1 | 78615000014 | STELLA ARTOIS 12/ 11.2 BTL |
| 2 | 3354495042 | CORONA PREMIER 12/ 12 BTL |
| 3 | 7231123021 | SOL 12/ 12 BTL |

Segment # 1 : 1_1 42.00 In

| POS | UPC | NAME |
|-----|-------------|---|
| 1 | 8066095605 | CORONA 6/ 12 BTL |
| 2 | 8066095695 | CORONA 12/ 12 CAN |
| 3 | 85389700227 | BON AND VIV SPIKED SELTZER VARIETY 12/ 12 CAN |
| 4 | 3354400013 | CORONA REFRESCA VARIETY 12/ 12 CAN |



CVS # 2726 COLD

Reset Timing 2019 SPRING

Address: 6221 ROUTE 25A | City: WADING RIVER | State: NY

REVERSE VIEW (ONLY IF NEEDED)

Segment:
2 of 2



Segment # 2 : 2_4 0.00 In

| POS | UPC | NAME |
|-----|------------|------------------------|
| 1 | 1820053218 | BUD LIGHT 18/ 12 CAN |
| 2 | 1820011218 | BUD 18/ 12 CAN |
| 3 | 7199030017 | COORS LIGHT 18/ 12 CAN |
| 4 | 3410057340 | LITE 18/ 12 CAN |

Segment # 2 : 2_3 18.00 In

| POS | UPC | NAME |
|-----|------------|------------------------|
| 1 | 1820053047 | BUD LIGHT 12/ 12 CAN |
| 2 | 1820011047 | BUD 12/ 12 CAN |
| 3 | 7199000048 | COORS LIGHT 12/ 12 CAN |
| 4 | 3410057636 | LITE 12/ 12 CAN |

Segment # 2 : 2_2 30.00 In

| POS | UPC | NAME |
|-----|------------|-----------------------------------|
| 1 | 8066095715 | MODELO ESPECIAL 12/ 12 CAN |
| 2 | 7199009511 | BLUE MOON BELGIAN WHITE 6/ 12 BTL |
| 3 | 7199030069 | COORS LIGHT 12/ 12 BTL |
| 4 | 2210000170 | PABST 12/ 12 CAN |

Segment # 2 : 2_1 42.00 In

| POS | UPC | NAME |
|-----|-------------|---|
| 1 | 3410001509 | HIGH LIFE 12/ 12 BTL |
| 2 | 61300874829 | ARNOLD PALMER SPIKED HALF AND HALF 1/24 CAN |
| 3 | 1820025001 | BUD LIGHT 1/ 25 CAN |
| 4 | 1820025000 | BUD 1/ 25 CAN |
| 5 | 7199030065 | COORS LIGHT 1/ 24 CAN |
| 6 | 7199010071 | COORS BANQUET 1/24 CAN |



CVS # 2726 COLD

Address: 6221 ROUTE 25A | City: WADING RIVER | State: NY

Chain/StoreNumer: CVS - EAST 2726

Reset Name: 2019 SPRING

Planogram Name: 2726_2_DOOR_COLD

CVS PHARMA... Store # 2726 H: 4 ft 5.00 in W: 3 ft 10.00 in D: 1 ft 10.00 in # of segments: 2

Name: 1_1 W:23.00 in D:22.00 in Avail Space: 0.57 in Ht Space: 10.00 in

| ID | UPC | Barcode | Name | Category | HFacings | Orientation | Units |
|-------|-------------|-----------------|------------------------------|---------------|----------|-------------|-------|
| 15400 | 8066095605 | 0 80660 95605 3 | CORONA 6/12 BTL | ABOVE PREMIUM | 1 | Side | 2 |
| 15426 | 8066095695 | 0 80660 95695 4 | CORONA 12/12 CAN | ABOVE PREMIUM | 1 | Side | 2 |
| 19178 | 85389700227 | 8 53897 00227 1 | BON AND VIV SPIKED SELTZE... | ABOVE PREMIUM | 1 | Front 90 | 3 |
| 86777 | 3354400013 | 0 33544 00013 7 | CORONA REFRESCA VARIETY... | ABOVE PREMIUM | 1 | Front 90 | 3 |

Name: 1_2 W:23.00 in D:22.00 in Avail Space: 0.66 in Ht Space: 10.00 in

| ID | UPC | Barcode | Name | Category | HFacings | Orientation | Units |
|-------|-------------|-----------------|---------------------------|---------------|----------|-------------|-------|
| 14094 | 78615000014 | 7 86150 00014 4 | STELLA ARTOIS 12/11.2 BTL | ABOVE PREMIUM | 1 | Side | 2 |
| 44952 | 3354495042 | 0 33544 95042 5 | CORONA PREMIER 12/12 BTL | ABOVE PREMIUM | 1 | Side | 2 |
| 10790 | 7231123021 | 0 72311 23021 6 | SOL 12/12 BTL | ABOVE PREMIUM | 1 | Side | 2 |

Name: 1_3 W:23.00 in D:22.00 in Avail Space: 1.33 in Ht Space: 10.00 in

| ID | UPC | Barcode | Name | Category | HFacings | Orientation | Units |
|-------|-------------|-----------------|------------------------------|---------------|----------|-------------|-------|
| 45151 | 63598554890 | 6 35985 54890 4 | WHITE CLAW VARIETY PACK 1... | ABOVE PREMIUM | 1 | Front 90 | 3 |
| 15416 | 8066095675 | 0 80660 95675 6 | CORONA LIGHT 12/12 BTL | ABOVE PREMIUM | 1 | Side | 2 |
| 15403 | 8066095615 | 0 80660 95615 2 | CORONA 12/12 BTL | ABOVE PREMIUM | 1 | Side | 2 |

Name: 1_4 W:23.00 in D:22.00 in Avail Space: 1.04 in Ht Space: 19.00 in

| ID | UPC | Barcode | Name | Category | HFacings | Orientation | Units |
|-------|------------|-----------------|--------------------------|---------------|----------|-------------|-------|
| 11342 | 7289000159 | 0 72890 00159 7 | HEINEKEN LIGHT 12/12 BTL | ABOVE PREMIUM | 1 | Side | 4 |
| 11300 | 7289000016 | 0 72890 00016 3 | HEINEKEN 12/12 BTL | ABOVE PREMIUM | 1 | Side | 4 |
| 1228 | 1820005990 | 0 18200 05990 2 | MICHELOB ULTRA 12/12 BTL | ABOVE PREMIUM | 1 | Side | 4 |

Name: 2_1 W:23.00 in D:22.00 in Avail Space: 1.28 in Ht Space: 10.00 in

| ID | UPC | Barcode | Name | Category | HFacings | Orientation | Units |
|----|-----|---------|------|----------|----------|-------------|-------|
|----|-----|---------|------|----------|----------|-------------|-------|



CVS # 2726 COLD

Address: 6221 ROUTE 25A | City: WADING RIVER | State: NY

Chain/StoreNumer: CVS - EAST 2726

Reset Name: 2019 SPRING

Planogram Name: 2726_2_DOOR_COLD

| | | | | | | | |
|-------|-------------|--|-----------------------------|---------------|---|-------|---|
| 3198 | 3410001509 | | HIGH LIFE 12/12 BTL | ECONOMY | 1 | Side | 2 |
| 66064 | 61300874829 | | ARNOLD PALMER SPIKED HAL... | ABOVE PREMIUM | 1 | Front | 7 |
| 1521 | 1820025001 | | BUD LIGHT 1/25 CAN | PREMIUM | 1 | Side | 7 |
| 1520 | 1820025000 | | BUD 1/25 CAN | PREMIUM | 1 | Front | 7 |
| 10346 | 7199030065 | | COORS LIGHT 1/24 CAN | PREMIUM | 1 | Front | 7 |
| 10243 | 7199010071 | | COORS BANQUET 1/24 CAN | PREMIUM | 1 | Front | 7 |

Name: 2_2 W:23.00 in D:22.00 in Avail Space: 0.77 in Ht Space: 11.00 in

| ID | UPC | Barcode | Name | Category | HFacings | Orientation | Units |
|-------|------------|---------|------------------------------|---------------|----------|-------------|-------|
| 15429 | 8066095715 | | MODELO ESPECIAL 12/12 CAN | ABOVE PREMIUM | 1 | Side | 2 |
| 10180 | 7199009511 | | BLUE MOON BELGIAN WHITE 6... | ABOVE PREMIUM | 1 | Side | 2 |
| 10348 | 7199030069 | | COORS LIGHT 12/12 BTL | PREMIUM | 1 | Side | 2 |
| 2241 | 2210000170 | | PABST 12/12 CAN | ECONOMY | 1 | Side | 2 |

Name: 2_3 W:23.00 in D:22.00 in Avail Space: 2.93 in Ht Space: 11.00 in

| ID | UPC | Barcode | Name | Category | HFacings | Orientation | Units |
|-------|------------|---------|-----------------------|----------|----------|-------------|-------|
| 1659 | 1820053047 | | BUD LIGHT 12/12 CAN | PREMIUM | 1 | Top 90 | 2 |
| 1297 | 1820011047 | | BUD 12/12 CAN | PREMIUM | 1 | Top 90 | 2 |
| 10164 | 7199000048 | | COORS LIGHT 12/12 CAN | PREMIUM | 1 | Top 90 | 2 |
| 3579 | 3410057636 | | LITE 12/12 CAN | PREMIUM | 1 | Top 90 | 2 |

Name: 2_4 W:23.00 in D:22.00 in Avail Space: 2.92 in Ht Space: 17.00 in

| ID | UPC | Barcode | Name | Category | HFacings | Orientation | Units |
|------|------------|---------|---------------------|----------|----------|-------------|-------|
| 1667 | 1820053218 | | BUD LIGHT 18/12 CAN | PREMIUM | 1 | Top 90 | 2 |





CVS # 2726 COLD

Address: 6221 ROUTE 25A | City: WADING RIVER | State: NY

Chain/StoreNumer: CVS - EAST 2726

Reset Name: 2019 SPRING

Planogram Name: 2726_2_DOOR_COLD

| | | | | | | | |
|-------|------------|---|-----------------------|---------|---|--------|---|
| 1307 | 1820011218 | 0  8 | BUD 18/12 CAN | PREMIUM | 1 | Top 90 | 2 |
| 10329 | 7199030017 | 0  3 | COORS LIGHT 18/12 CAN | PREMIUM | 1 | Top 90 | 2 |
| 3552 | 3410057340 | 0  9 | LITE 18/12 CAN | PREMIUM | 1 | Top 90 | 2 |