



CVS # 984 COLD

Reset Timing 2019 SPRING

Address: 201 GLEN ST | City: GLEN COVE | State: NY





CVS # 984 COLD

Address: 201 GLEN ST | City: GLEN COVE | State: NY

Chain/StoreNumer: CVS - EAST 984

Reset Name: 2019 SPRING

Planogram Name: 984_6_DOOR_COLD

Segment # 1 : 1_4 DEPTH: 27 in WIDTH: 24 in DISTANCE FROM TOP OF BASE SHELF TO BOTTOM OF SHELF:0.00 in

| POS # | FAC | UPC | NAME | CASES | CAPACITY | UNITS HIGH | Category |
|-------|-----|------------|-------------------------|-------|----------|------------|----------|
| 1 | 1 | 1820020077 | NATURAL LIGHT 15/12 CAN | 1.5 | 3 | 1 | ECONOMY |
| 2 | 1 | 1820028443 | NATURAL ICE 15/12 CAN | 2.0 | 4 | 1 | ECONOMY |
| 3 | 1 | 3410001509 | HIGH LIFE 12/12 BTL | 2.0 | 4 | 1 | ECONOMY |
| 4 | 1 | 3410057340 | LITE 18/12 CAN | 3.0 | 3 | 1 | PREMIUM |

Segment # 1 : 1_3 DEPTH: 27 in WIDTH: 24 in DISTANCE FROM TOP OF BASE SHELF TO BOTTOM OF SHELF:20.00 in

| POS # | FAC | UPC | NAME | CASES | CAPACITY | UNITS HIGH | Category |
|-------|-----|------------|-----------------------|-------|----------|------------|----------|
| 1 | 1 | 2210000170 | PABST 12/12 CAN | 1.0 | 2 | 1 | ECONOMY |
| 2 | 1 | 3410057509 | LITE 12/12 BTL | 1.0 | 2 | 1 | PREMIUM |
| 3 | 1 | 3410057636 | LITE 12/12 CAN | 1.5 | 3 | 1 | PREMIUM |
| 4 | 1 | 7199000048 | COORS LIGHT 12/12 CAN | 1.5 | 3 | 1 | PREMIUM |

Segment # 1 : 1_2 DEPTH: 27 in WIDTH: 24 in DISTANCE FROM TOP OF BASE SHELF TO BOTTOM OF SHELF:33.00 in

| POS # | FAC | UPC | NAME | CASES | CAPACITY | UNITS HIGH | Category |
|-------|-----|-------------|---------------------------------------------|-------|----------|------------|---------------|
| 1 | 1 | 1820025013 | NATTY DADDY 1/25 CAN | 0.8 | 9 | 1 | ECONOMY |
| 2 | 1 | 7199047712 | KEYSTONE ICE 1/24 CAN | 0.8 | 9 | 1 | ECONOMY |
| 3 | 1 | 2210000004 | PABST 1/24 CAN | 0.8 | 9 | 1 | ECONOMY |
| 4 | 1 | 8769283231 | TWISTED TEA ORIGINAL 1/24 CAN | 0.8 | 9 | 1 | ABOVE PREMIUM |
| 5 | 1 | 61300874829 | ARNOLD PALMER SPIKED HALF AND HALF 1/24 CAN | 0.8 | 9 | 1 | ABOVE PREMIUM |
| 6 | 1 | 63598525884 | MIKES HARD BLACK CHERRY LEMONADE 1/23.5 CAN | 0.8 | 9 | 1 | ABOVE PREMIUM |
| 7 | 1 | 3410000323 | REDD'S WICKED 1/24 CAN | 0.8 | 9 | 1 | ABOVE PREMIUM |
| 8 | 1 | 7089701331 | FOSTERS 1/25.4 CAN | 0.7 | 8 | 1 | ABOVE PREMIUM |

Segment # 1 : 1_1 DEPTH: 27 in WIDTH: 24 in DISTANCE FROM TOP OF BASE SHELF TO BOTTOM OF SHELF:45.00 in

| POS # | FAC | UPC | NAME | CASES | CAPACITY | UNITS HIGH | Category |
|-------|-----|------------|--------------------------|-------|----------|------------|---------------|
| 1 | 1 | 3410000355 | LITE 1/24 CAN | 0.8 | 9 | 1 | PREMIUM |
| 2 | 1 | 7199010071 | COORS BANQUET 1/24 CAN | 0.8 | 9 | 1 | PREMIUM |
| 3 | 1 | 7199030065 | COORS LIGHT 1/24 CAN | 0.8 | 9 | 1 | PREMIUM |
| 4 | 1 | 1820025000 | BUD 1/25 CAN | 0.6 | 9 | 1 | PREMIUM |
| 5 | 1 | 1820025001 | BUD LIGHT 1/25 CAN | 0.6 | 9 | 1 | PREMIUM |
| 6 | 1 | 7289000119 | HEINEKEN 1/24 CAN | 0.8 | 9 | 1 | ABOVE PREMIUM |
| 7 | 1 | 8066095721 | MODELO ESPECIAL 1/24 CAN | 0.8 | 9 | 1 | ABOVE PREMIUM |
| 8 | 1 | 8066095643 | CORONA 1/24 CAN | 0.8 | 9 | 1 | ABOVE PREMIUM |

Segment # 2 : 2_4 DEPTH: 27 in WIDTH: 24 in DISTANCE FROM TOP OF BASE SHELF TO BOTTOM OF SHELF:0.00 in

| POS # | FAC | UPC | NAME | CASES | CAPACITY | UNITS HIGH | Category |
|-------|-----|------------|-----------------------|-------|----------|------------|----------|
| 1 | 1 | 7199030078 | COORS LIGHT 18/12 BTL | 2.0 | 2 | 1 | PREMIUM |
| 2 | 1 | 1820011308 | BUD 18/12 BTL | 2.0 | 2 | 1 | PREMIUM |
| 3 | 1 | 1820053308 | BUD LIGHT 18/12 BTL | 2.0 | 2 | 1 | PREMIUM |

Segment # 2 : 2_3 DEPTH: 27 in WIDTH: 24 in DISTANCE FROM TOP OF BASE SHELF TO BOTTOM OF SHELF:20.00 in

| POS # | FAC | UPC | NAME | CASES | CAPACITY | UNITS HIGH | Category |
|-------|-----|------------|-----------------------|-------|----------|------------|----------|
| 1 | 1 | 7199030017 | COORS LIGHT 18/12 CAN | 2.0 | 2 | 1 | PREMIUM |
| 2 | 1 | 1820011218 | BUD 18/12 CAN | 1.0 | 1 | 1 | PREMIUM |



CVS # 984 COLD

Address: 201 GLEN ST | City: GLEN COVE | State: NY

Chain/StoreNumer: CVS - EAST 984

Reset Name: 2019 SPRING

Planogram Name: 984_6_DOOR_COLD

| | | | | | | | |
|---|---|------------|---------------------|-----|---|---|---------|
| 3 | 1 | 1820053218 | BUD LIGHT 18/12 CAN | 1.0 | 1 | 1 | PREMIUM |
| 4 | 1 | 1820053047 | BUD LIGHT 12/12 CAN | 1.5 | 3 | 1 | PREMIUM |

Segment # 2 : 2_2 DEPTH: 27 in WIDTH: 24 in DISTANCE FROM TOP OF BASE SHELF TO BOTTOM OF SHELF:32.00 in

| POS # | FAC | UPC | NAME | CASES | CAPACITY | UNITS HIGH | Category |
|-------|-----|------------|-----------------------|-------|----------|------------|----------|
| 1 | 1 | 7199030069 | COORS LIGHT 12/12 BTL | 1.0 | 2 | 1 | PREMIUM |
| 2 | 1 | 1820000771 | BUD 12/12 BTL | 1.0 | 2 | 1 | PREMIUM |
| 3 | 1 | 1820000769 | BUD LIGHT 12/12 BTL | 1.0 | 2 | 1 | PREMIUM |

Segment # 2 : 2_1 DEPTH: 27 in WIDTH: 24 in DISTANCE FROM TOP OF BASE SHELF TO BOTTOM OF SHELF:43.00 in

| POS # | FAC | UPC | NAME | CASES | CAPACITY | UNITS HIGH | Category |
|-------|-----|------------|----------------------|-------|----------|------------|----------|
| 1 | 2 | 7199030120 | COORS LIGHT 3/24 CAN | 1.5 | 6 | 2 | PREMIUM |
| 2 | 1 | 1820008981 | BUD 8/16 CAN | 1.7 | 5 | 1 | PREMIUM |
| 3 | 1 | 1820011047 | BUD 12/12 CAN | 1.5 | 3 | 1 | PREMIUM |
| 4 | 1 | 1820000833 | BUD LIGHT 6/12 BTL | 0.8 | 3 | 1 | PREMIUM |

Segment # 3 : 3_4 DEPTH: 27 in WIDTH: 24 in DISTANCE FROM TOP OF BASE SHELF TO BOTTOM OF SHELF:0.00 in

| POS # | FAC | UPC | NAME | CASES | CAPACITY | UNITS HIGH | Category |
|-------|-----|------------|---------------------------|-------|----------|------------|---------------|
| 1 | 1 | 8066095757 | MODELO ESPECIAL 12/12 BTL | 2.0 | 4 | 1 | ABOVE PREMIUM |
| 2 | 1 | 8066095757 | MODELO ESPECIAL 12/12 BTL | 2.0 | 4 | 1 | ABOVE PREMIUM |

Segment # 3 : 3_3 DEPTH: 27 in WIDTH: 24 in DISTANCE FROM TOP OF BASE SHELF TO BOTTOM OF SHELF:21.00 in

| POS # | FAC | UPC | NAME | CASES | CAPACITY | UNITS HIGH | Category |
|-------|-----|------------|---------------------------|-------|----------|------------|---------------|
| 1 | 1 | 1820096721 | MICHELOB ULTRA 18/12 CAN | 1.0 | 1 | 1 | ABOVE PREMIUM |
| 2 | 1 | 8066095715 | MODELO ESPECIAL 12/12 CAN | 1.0 | 2 | 1 | ABOVE PREMIUM |
| 3 | 1 | 8066095757 | MODELO ESPECIAL 12/12 BTL | 1.0 | 2 | 1 | ABOVE PREMIUM |

Segment # 3 : 3_2 DEPTH: 27 in WIDTH: 24 in DISTANCE FROM TOP OF BASE SHELF TO BOTTOM OF SHELF:32.00 in

| POS # | FAC | UPC | NAME | CASES | CAPACITY | UNITS HIGH | Category |
|-------|-----|------------|--------------------------|-------|----------|------------|---------------|
| 1 | 1 | 1820005990 | MICHELOB ULTRA 12/12 BTL | 1.0 | 2 | 1 | ABOVE PREMIUM |
| 2 | 1 | 7231123021 | SOL 12/12 BTL | 1.0 | 2 | 1 | ABOVE PREMIUM |
| 3 | 1 | 8066095765 | MODELO ESPECIAL 6/12 BTL | 1.0 | 4 | 1 | ABOVE PREMIUM |

Segment # 3 : 3_1 DEPTH: 27 in WIDTH: 24 in DISTANCE FROM TOP OF BASE SHELF TO BOTTOM OF SHELF:43.00 in

| POS # | FAC | UPC | NAME | CASES | CAPACITY | UNITS HIGH | Category |
|-------|-----|------------|---------------------------|-------|----------|------------|---------------|
| 1 | 1 | 1820020079 | BUD LIGHT ORANGE 6/12 BTL | 0.8 | 3 | 1 | ABOVE PREMIUM |
| 2 | 1 | 3354495053 | CORONA FAMILIAR 12/12 BTL | 1.0 | 2 | 1 | ABOVE PREMIUM |
| 3 | 1 | 3354495042 | CORONA PREMIER 12/12 BTL | 1.0 | 2 | 1 | ABOVE PREMIUM |

Segment # 4 : 4_4 DEPTH: 27 in WIDTH: 24 in DISTANCE FROM TOP OF BASE SHELF TO BOTTOM OF SHELF:0.00 in

| POS # | FAC | UPC | NAME | CASES | CAPACITY | UNITS HIGH | Category |
|-------|-----|------------|------------------|-------|----------|------------|---------------|
| 1 | 3 | 8066095615 | CORONA 12/12 BTL | 6.0 | 12 | 3 | ABOVE PREMIUM |

Segment # 4 : 4_3 DEPTH: 27 in WIDTH: 24 in DISTANCE FROM TOP OF BASE SHELF TO BOTTOM OF SHELF:21.00 in



CVS # 984 COLD

Address: 201 GLEN ST | City: GLEN COVE | State: NY

Chain/StoreNumer: CVS - EAST 984

Reset Name: 2019 SPRING

Planogram Name: 984_6_DOOR_COLD

| POS # | FAC | UPC | NAME | CASES | CAPACITY | UNITS HIGH | Category |
|-------|-----|------------|------------------|-------|----------|------------|---------------|
| 1 | 3 | 8066095615 | CORONA 12/12 BTL | 3.0 | 6 | 3 | ABOVE PREMIUM |

Segment # 4 : 4_2 DEPTH: 27 in WIDTH: 24 in DISTANCE FROM TOP OF BASE SHELF TO BOTTOM OF SHELF:32.00 in

| POS # | FAC | UPC | NAME | CASES | CAPACITY | UNITS HIGH | Category |
|-------|-----|------------|------------------------------------|-------|----------|------------|---------------|
| 1 | 1 | 8066095605 | CORONA 6/12 BTL | 0.8 | 3 | 1 | ABOVE PREMIUM |
| 2 | 1 | 8066095625 | CORONA LIGHT 12/12 BTL | 0.8 | 3 | 1 | ABOVE PREMIUM |
| 3 | 1 | 8066095675 | CORONA LIGHT 12/12 BTL | 1.0 | 2 | 1 | ABOVE PREMIUM |
| 4 | 1 | 8769282102 | ANGRY ORCHARD CRISP APPLE 6/12 BTL | 0.8 | 3 | 1 | ABOVE PREMIUM |

Segment # 4 : 4_1 DEPTH: 27 in WIDTH: 24 in DISTANCE FROM TOP OF BASE SHELF TO BOTTOM OF SHELF:43.00 in

| POS # | FAC | UPC | NAME | CASES | CAPACITY | UNITS HIGH | Category |
|-------|-----|------------|-----------------------------------|-------|----------|------------|---------------|
| 1 | 1 | 8066095695 | CORONA 12/12 CAN | 1.0 | 2 | 1 | ABOVE PREMIUM |
| 2 | 1 | 8066095621 | CORONA LIGHT 12/12 CAN | 1.5 | 3 | 1 | ABOVE PREMIUM |
| 3 | 1 | 8382012360 | GUINNESS DRAUGHT STOUT 4/14.9 CAN | 0.8 | 5 | 1 | ABOVE PREMIUM |
| 4 | 1 | 8382012393 | GUINNESS EXTRA STOUT 6/12 BTL | 0.8 | 3 | 1 | ABOVE PREMIUM |

Segment # 5 : 5_4 DEPTH: 27 in WIDTH: 24 in DISTANCE FROM TOP OF BASE SHELF TO BOTTOM OF SHELF:0.00 in

| POS # | FAC | UPC | NAME | CASES | CAPACITY | UNITS HIGH | Category |
|-------|-----|------------|------------------|-------|----------|------------|---------------|
| 1 | 3 | 8066095615 | CORONA 12/12 BTL | 6.0 | 12 | 3 | ABOVE PREMIUM |

Segment # 5 : 5_3 DEPTH: 27 in WIDTH: 24 in DISTANCE FROM TOP OF BASE SHELF TO BOTTOM OF SHELF:21.00 in

| POS # | FAC | UPC | NAME | CASES | CAPACITY | UNITS HIGH | Category |
|-------|-----|------------|--------------------------|-------|----------|------------|---------------|
| 1 | 1 | 8248812300 | BECKS 12/12 BTL | 1.0 | 2 | 1 | ABOVE PREMIUM |
| 2 | 1 | 7289000159 | HEINEKEN LIGHT 12/12 BTL | 1.0 | 2 | 1 | ABOVE PREMIUM |
| 3 | 1 | 7289000016 | HEINEKEN 12/12 BTL | 1.0 | 2 | 1 | ABOVE PREMIUM |

Segment # 5 : 5_2 DEPTH: 27 in WIDTH: 24 in DISTANCE FROM TOP OF BASE SHELF TO BOTTOM OF SHELF:32.00 in

| POS # | FAC | UPC | NAME | CASES | CAPACITY | UNITS HIGH | Category |
|-------|-----|-------------|---------------------------------------------|-------|----------|------------|---------------|
| 1 | 1 | 63598506744 | MIKES HARD BLACK CHERRY LEMONADE 6/11.2 BTL | 0.8 | 3 | 1 | ABOVE PREMIUM |
| 2 | 1 | 63598510062 | MIKES HARD LEMONADE 6/11.2 BTL | 0.8 | 3 | 1 | ABOVE PREMIUM |
| 3 | 1 | 3410051681 | CAPE LINE VARIETY PACK 12/12 CAN | 1.5 | 3 | 1 | ABOVE PREMIUM |
| 4 | 1 | 63598554890 | WHITE CLAW VARIETY PACK 12/12 CAN | 2.0 | 4 | 1 | ABOVE PREMIUM |

Segment # 5 : 5_1 DEPTH: 27 in WIDTH: 24 in DISTANCE FROM TOP OF BASE SHELF TO BOTTOM OF SHELF:43.00 in

| POS # | FAC | UPC | NAME | CASES | CAPACITY | UNITS HIGH | Category |
|-------|-----|-------------|----------------------------------------------|-------|----------|------------|---------------|
| 1 | 1 | 3354400013 | CORONA REFRESCA VARIETY 12/12 CAN | 2.0 | 4 | 1 | ABOVE PREMIUM |
| 2 | 1 | 85389700227 | BON AND VIV SPIKED SELTZER VARIETY 12/12 CAN | 2.0 | 4 | 1 | ABOVE PREMIUM |
| 3 | 1 | 8769200424 | TRULY VARIETY PACK 12/12 CAN | 2.0 | 4 | 1 | ABOVE PREMIUM |
| 4 | 1 | 60690500830 | ITHACA FLOWER POWER 6/12 BTL | 0.8 | 3 | 1 | ABOVE PREMIUM |

Segment # 6 : 6_4 DEPTH: 27 in WIDTH: 24 in DISTANCE FROM TOP OF BASE SHELF TO BOTTOM OF SHELF:0.00 in

| POS # | FAC | UPC | NAME | CASES | CAPACITY | UNITS HIGH | Category |
|-------|-----|------------|--------------------|-------|----------|------------|---------------|
| 1 | 3 | 7289000016 | HEINEKEN 12/12 BTL | 6.0 | 12 | 3 | ABOVE PREMIUM |



CVS # 984 COLD

Address: 201 GLEN ST | City: GLEN COVE | State: NY

Chain/StoreNumber: CVS - EAST 984

Reset Name: 2019 SPRING

Planogram Name: 984_6_DOOR_COLD

Segment # 6 : 6_3 DEPTH: 27 In WIDTH: 24 In DISTANCE FROM TOP OF BASE SHELF TO BOTTOM OF SHELF:21.00 In

| POS # | FAC | UPC | NAME | CASES | CAPACITY | UNITS HIGH | Category |
|-------|-----|------------|---------------------------|-------|----------|------------|---------------|
| 1 | 1 | 7289000020 | HEINEKEN 12/12 CAN | 1.0 | 2 | 1 | ABOVE PREMIUM |
| 2 | 1 | 7289000011 | HEINEKEN 6/12 BTL | 0.8 | 3 | 1 | ABOVE PREMIUM |
| 3 | 1 | 7861500001 | STELLA ARTOIS 6/11.2 BTL | 0.8 | 3 | 1 | ABOVE PREMIUM |
| 4 | 1 | 7861500014 | STELLA ARTOIS 12/11.2 BTL | 1.0 | 2 | 1 | ABOVE PREMIUM |

Segment # 6 : 6_2 DEPTH: 27 In WIDTH: 24 In DISTANCE FROM TOP OF BASE SHELF TO BOTTOM OF SHELF:32.00 In

| POS # | FAC | UPC | NAME | CASES | CAPACITY | UNITS HIGH | Category |
|-------|-----|------------|-----------------------------------|-------|----------|------------|---------------|
| 1 | 1 | 8378337521 | SIERRA NEVADA PALE ALE 6/12 BTL | 0.8 | 3 | 1 | ABOVE PREMIUM |
| 2 | 1 | 3410051605 | LEINIES SEASONAL SHANDY 6/12 BTL | 0.8 | 3 | 1 | ABOVE PREMIUM |
| 3 | 1 | 7199009511 | BLUE MOON BELGIAN WHITE 6/12 BTL | 0.8 | 3 | 1 | ABOVE PREMIUM |
| 4 | 1 | 7199009516 | BLUE MOON BELGIAN WHITE 12/12 BTL | 1.0 | 2 | 1 | ABOVE PREMIUM |

Segment # 6 : 6_1 DEPTH: 27 In WIDTH: 24 In DISTANCE FROM TOP OF BASE SHELF TO BOTTOM OF SHELF:44.00 In

| POS # | FAC | UPC | NAME | CASES | CAPACITY | UNITS HIGH | Category |
|-------|-----|-------------|-------------------------------------------|-------|----------|------------|---------------|
| 1 | 1 | 68174511102 | BLUE POINT HOPTICAL ILLUSION IPA 6/12 BTL | 0.8 | 3 | 1 | ABOVE PREMIUM |
| 2 | 1 | 68174511118 | BLUE POINT SEASONAL 6/12 BTL | 0.8 | 3 | 1 | ABOVE PREMIUM |
| 3 | 1 | 8769230050 | SAMUEL ADAMS SEASONAL 6/12 BTL (A) | 0.8 | 3 | 1 | ABOVE PREMIUM |
| 4 | 1 | 63848900029 | DOGFISH HEAD 60 MINUTE IPA 6/12 BTL | 0.8 | 3 | 1 | ABOVE PREMIUM |

REVERSE VIEW (ONLY IF NEEDED)





CVS # 984 COLD

Reset Timing 2019 SPRING

Address: 201 GLEN ST | City: GLEN COVE | State: NY

REVERSE VIEW (ONLY IF NEEDED)

Segment:
1 of 6



Segment # 1 : 1_4 0.00 In

| POS | UPC | NAME |
|-----|-------------|--------------------------|
| 1 | 1820020077 | NATURAL LIGHT 15/ 12 CAN |
| 2 | 1820028443 | NATURAL ICE 15/ 12 CAN |
| 3 | 3410001509 | HIGH LIFE 12/ 12 BTL |
| 4 | 34100057340 | LITE 18/ 12 CAN |

Segment # 1 : 1_3 20.00 In

| POS | UPC | NAME |
|-----|-------------|------------------------|
| 1 | 2210000170 | PABST 12/ 12 CAN |
| 2 | 34100057509 | LITE 12/ 12 BTL |
| 3 | 34100057636 | LITE 12/ 12 CAN |
| 4 | 7199000048 | COORS LIGHT 12/ 12 CAN |

Segment # 1 : 1_2 33.00 In

| POS | UPC | NAME |
|-----|-------------|----------------------------------------------|
| 1 | 1820025013 | NATTY DADDY 1/ 25 CAN |
| 2 | 7199047712 | KEYSTONE ICE 1/ 24 CAN |
| 3 | 2210000004 | PABST 1/ 24 CAN |
| 4 | 8769283231 | TWISTED TEA ORIGINAL 1/ 24 CAN |
| 5 | 61300874829 | ARNOLD PALMER SPIKED HALF AND HALF 1/ 24 CAN |
| 6 | 63598525884 | MIKES HARD BLACK CHERRY LEMONADE 1/ 23.5 CAN |
| 7 | 3410000323 | REDDS WICKED 1/ 24 CAN |
| 8 | 7089701331 | FOSTERS 1/ 25.4 CAN |

Segment # 1 : 1_1 45.00 In

| POS | UPC | NAME |
|-----|------------|---------------------------|
| 1 | 3410000355 | LITE 1/ 24 CAN |
| 2 | 7199010071 | COORS BANQUET 1/ 24 CAN |
| 3 | 7199030065 | COORS LIGHT 1/ 24 CAN |
| 4 | 1820025000 | BUD 1/ 25 CAN |
| 5 | 1820025001 | BUD LIGHT 1/ 25 CAN |
| 6 | 7289000119 | HEINEKEN 1/ 24 CAN |
| 7 | 8066095721 | MODELO ESPECIAL 1/ 24 CAN |
| 8 | 8066095643 | CORONA 1/ 24 CAN |

REVERSE VIEW (ONLY IF NEEDED)

Segment:
2 of 6



Segment # 2 : 2_4 0.00 In

| POS | UPC | NAME |
|-----|------------|------------------------|
| 1 | 7199030078 | COORS LIGHT 18/ 12 BTL |
| 2 | 1820011308 | BUD 18/ 12 BTL |
| 3 | 1820053308 | BUD LIGHT 18/ 12 BTL |

Segment # 2 : 2_3 20.00 In

| POS | UPC | NAME |
|-----|------------|------------------------|
| 1 | 7199030017 | COORS LIGHT 18/ 12 CAN |
| 2 | 1820011218 | BUD 18/ 12 CAN |
| 3 | 1820053218 | BUD LIGHT 18/ 12 CAN |
| 4 | 1820053047 | BUD LIGHT 12/ 12 CAN |

Segment # 2 : 2_2 32.00 In

| POS | UPC | NAME |
|-----|------------|------------------------|
| 1 | 7199030069 | COORS LIGHT 12/ 12 BTL |
| 2 | 1820000771 | BUD 12/ 12 BTL |
| 3 | 1820000769 | BUD LIGHT 12/ 12 BTL |

Segment # 2 : 2_1 43.00 In

| POS | UPC | NAME |
|-----|------------|-----------------------|
| 1 | 7199030120 | COORS LIGHT 3/ 24 CAN |
| 2 | 1820008981 | BUD 8/ 16 CAN |
| 3 | 1820011047 | BUD 12/ 12 CAN |
| 4 | 1820000833 | BUD LIGHT 6/ 12 BTL |

REVERSE VIEW (ONLY IF NEEDED)

Segment:
3 of 6



Segment # 3 : 3_4 0.00 In

| POS | UPC | NAME |
|-----|------------|----------------------------|
| 1 | 8066095757 | MODELO ESPECIAL 12/ 12 BTL |
| 2 | 8066095757 | MODELO ESPECIAL 12/ 12 BTL |

Segment # 3 : 3_3 21.00 In

| POS | UPC | NAME |
|-----|------------|----------------------------|
| 1 | 1820096721 | MICHELOB ULTRA 18/ 12 CAN |
| 2 | 8066095715 | MODELO ESPECIAL 12/ 12 CAN |
| 3 | 8066095757 | MODELO ESPECIAL 12/ 12 BTL |

Segment # 3 : 3_2 32.00 In

| POS | UPC | NAME |
|-----|------------|---------------------------|
| 1 | 1820005990 | MICHELOB ULTRA 12/ 12 BTL |
| 2 | 7231123021 | SOL 12/ 12 BTL |
| 3 | 8066095765 | MODELO ESPECIAL 6/ 12 BTL |

Segment # 3 : 3_1 43.00 In

| POS | UPC | NAME |
|-----|------------|----------------------------|
| 1 | 1820020079 | BUD LIGHT ORANGE 6/ 12 BTL |
| 2 | 3354495053 | CORONA FAMILIAR 12/ 12 BTL |
| 3 | 3354495042 | CORONA PREMIER 12/ 12 BTL |



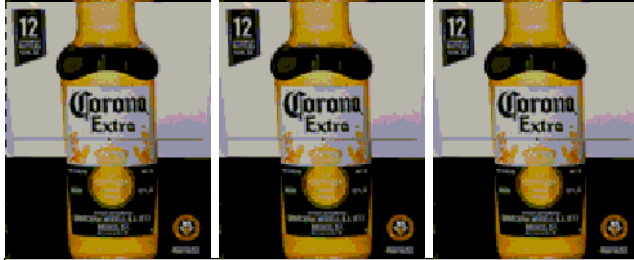
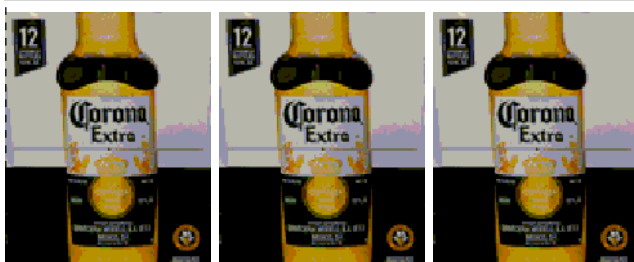
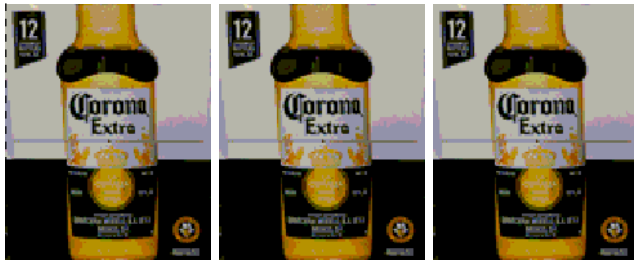
CVS # 984 COLD

Reset Timing 2019 SPRING

Address: 201 GLEN ST | City: GLEN COVE | State: NY

REVERSE VIEW (ONLY IF NEEDED)

Segment:
4 of 6



Segment # 4 : 4_4 0.00 In

| POS | UPC | NAME |
|-----|------------|-------------------|
| 1 | 8066095615 | CORONA 12/ 12 BTL |

Segment # 4 : 4_3 21.00 In

| POS | UPC | NAME |
|-----|------------|-------------------|
| 1 | 8066095615 | CORONA 12/ 12 BTL |

Segment # 4 : 4_2 32.00 In

| POS | UPC | NAME |
|-----|------------|-------------------------------------|
| 1 | 8066095605 | CORONA 6/ 12 BTL |
| 2 | 8066095625 | CORONA LIGHT 6/ 12 BTL |
| 3 | 8066095675 | CORONA LIGHT 12/ 12 BTL |
| 4 | 8769282102 | ANGRY ORCHARD CRISP APPLE 6/ 12 BTL |

Segment # 4 : 4_1 43.00 In

| POS | UPC | NAME |
|-----|------------|------------------------------------|
| 1 | 8066095695 | CORONA 12/ 12 CAN |
| 2 | 8066095621 | CORONA LIGHT 12/ 12 CAN |
| 3 | 8382012360 | GUINNESS DRAUGHT STOUT 4/ 14.9 CAN |
| 4 | 8382012393 | GUINNESS EXTRA STOUT 6/ 12 BTL |



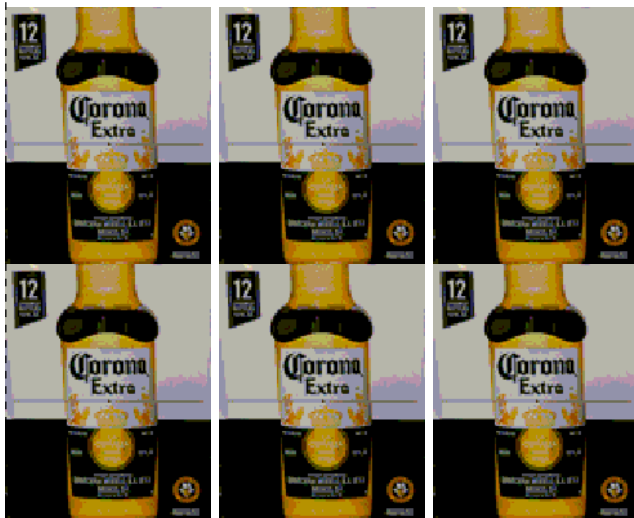
CVS # 984 COLD

Reset Timing 2019 SPRING

Address: 201 GLEN ST | City: GLEN COVE | State: NY

REVERSE VIEW (ONLY IF NEEDED)

Segment:
5 of 6



Segment # 5 : 5_4 0.00 In

| POS | UPC | NAME |
|-----|------------|-------------------|
| 1 | 8066095615 | CORONA 12/ 12 BTL |

Segment # 5 : 5_3 21.00 In

| POS | UPC | NAME |
|-----|------------|---------------------------|
| 1 | 8248812300 | BECKS 12/ 12 BTL |
| 2 | 7289000159 | HEINEKEN LIGHT 12/ 12 BTL |
| 3 | 7289000016 | HEINEKEN 12/ 12 BTL |

Segment # 5 : 5_2 32.00 In

| POS | UPC | NAME |
|-----|-------------|----------------------------------------------|
| 1 | 63598506744 | MIKES HARD BLACK CHERRY LEMONADE 6/ 11.2 BTL |
| 2 | 63598510062 | MIKES HARD LEMONADE 6/ 11.2 BTL |
| 3 | 3410051681 | CAPE LINE VARIETY PACK 12/ 12 CAN |
| 4 | 63598554890 | WHITE CLAW VARIETY PACK 12/ 12 CAN |

Segment # 5 : 5_1 43.00 In

| POS | UPC | NAME |
|-----|-------------|-----------------------------------------------|
| 1 | 3354400013 | CORONA REFRESCA VARIETY 12/ 12 CAN |
| 2 | 85389700227 | BON AND VIV SPIKED SELTZER VARIETY 12/ 12 CAN |
| 3 | 8769200424 | TRULY VARIETY PACK 12/ 12 CAN |
| 4 | 60690500830 | ITHACA FLOWER POWER 6/ 12 BTL |

REVERSE VIEW (ONLY IF NEEDED)

Segment:
6 of 6



Segment # 6 : 6_4 0.00 In

| POS | UPC | NAME |
|-----|------------|---------------------|
| 1 | 7289000016 | HEINEKEN 12/ 12 BTL |

Segment # 6 : 6_3 21.00 In

| POS | UPC | NAME |
|-----|------------|----------------------------|
| 1 | 7289000020 | HEINEKEN 12/ 12 CAN |
| 2 | 7289000011 | HEINEKEN 6/ 12 BTL |
| 3 | 7861500001 | STELLA ARTOIS 6/ 11.2 BTL |
| 4 | 7861500014 | STELLA ARTOIS 12/ 11.2 BTL |

Segment # 6 : 6_2 32.00 In

| POS | UPC | NAME |
|-----|------------|------------------------------------|
| 1 | 8378337521 | SIERRA NEVADA PALE ALE 6/ 12 BTL |
| 2 | 3410051605 | LEINIES SEASONAL SHANDY 6/ 12 BTL |
| 3 | 7199009511 | BLUE MOON BELGIAN WHITE 6/ 12 BTL |
| 4 | 7199009516 | BLUE MOON BELGIAN WHITE 12/ 12 BTL |

Segment # 6 : 6_1 44.00 In

| POS | UPC | NAME |
|-----|-------------|--------------------------------------------|
| 1 | 68174511102 | BLUE POINT HOPTICAL ILLUSION IPA 6/ 12 BTL |
| 2 | 68174511118 | BLUE POINT SEASONAL 6/ 12 BTL |
| 3 | 8769230050 | SAMUEL ADAMS SEASONAL 6/ 12 BTL (A) |
| 4 | 63848900029 | DOGFISH HEAD 60 MINUTE IPA 6/ 12 BTL |



CVS # 984 COLD

Address: 201 GLEN ST | City: GLEN COVE | State: NY

Chain/StoreNumer: CVS - EAST 984

Reset Name: 2019 SPRING

Planogram Name: 984_6_DOOR_COLD

CVS PHARMA... Store # 984 H: 4 ft 7.00 in W: 12 ft D: 2 ft 3.00 in # of segments: 6

Name: 1_1 W:24.00 in D:27.00 in Avail Space: 0.97 in Ht Space: 9.00 in

| ID | UPC | Barcode | Name | Category | HFacings | Orientation | Units |
|-------|------------|---------|--------------------------|---------------|----------|-------------|-------|
| 2968 | 341000355 | | LITE 1/24 CAN | PREMIUM | 1 | Front | 9 |
| 10243 | 7199010071 | | COORS BANQUET 1/24 CAN | PREMIUM | 1 | Side | 9 |
| 10346 | 7199030065 | | COORS LIGHT 1/24 CAN | PREMIUM | 1 | Front | 9 |
| 1520 | 1820025000 | | BUD 1/25 CAN | PREMIUM | 1 | Side | 9 |
| 1521 | 1820025001 | | BUD LIGHT 1/25 CAN | PREMIUM | 1 | Front | 9 |
| 11327 | 7289000119 | | HEINEKEN 1/24 CAN | ABOVE PREMIUM | 1 | Front | 9 |
| 15431 | 8066095721 | | MODELO ESPECIAL 1/24 CAN | ABOVE PREMIUM | 1 | Front | 9 |
| 15415 | 8066095643 | | CORONA 1/24 CAN | ABOVE PREMIUM | 1 | Front | 9 |

Name: 1_2 W:24.00 in D:27.00 in Avail Space: 0.73 in Ht Space: 11.00 in

| ID | UPC | Barcode | Name | Category | HFacings | Orientation | Units |
|-------|-------------|---------|--------------------------------|---------------|----------|-------------|-------|
| 1533 | 1820025013 | | NATTY DADDY 1/25 CAN | ECONOMY | 1 | Front | 9 |
| 10412 | 7199047712 | | KEYSTONE ICE 1/24 CAN | ECONOMY | 1 | Front | 9 |
| 2191 | 2210000004 | | PABST 1/24 CAN | ECONOMY | 1 | Front | 9 |
| 22099 | 8769283231 | | TWISTED TEA ORIGINAL 1/24 C... | ABOVE PREMIUM | 1 | Front | 9 |
| 66064 | 61300874829 | | ARNOLD PALMER SPIKED HAL... | ABOVE PREMIUM | 1 | Front | 9 |
| 6487 | 63598525884 | | MIKES HARD BLACK CHERRY L... | ABOVE PREMIUM | 1 | Front | 9 |
| 2935 | 341000323 | | REDD'S WICKED 1/24 CAN | ABOVE PREMIUM | 1 | Front | 9 |



CVS # 984 COLD

Address: 201 GLEN ST | City: GLEN COVE | State: NY

Chain/StoreNumer: CVS - EAST 984

Reset Name: 2019 SPRING

Planogram Name: 984_6_DOOR_COLD

| | | | | | | | | |
|------|------------|--|---|--------------------|---------------|---|-------|---|
| 9452 | 7089701331 | | 5 | FOSTERS 1/25.4 CAN | ABOVE PREMIUM | 1 | Front | 8 |
|------|------------|--|---|--------------------|---------------|---|-------|---|

Name: 1_3 W:24.00 in D:27.00 in Avail Space: 1.62 in Ht Space: 12.00 in

| ID | UPC | Barcode | | Name | Category | HFacings | Orientation | Units |
|-------|------------|---------|---|-----------------------|----------|----------|-------------|-------|
| 2241 | 221000170 | | 1 | PABST 12/12 CAN | ECONOMY | 1 | Side | 2 |
| 3565 | 3410057509 | | 0 | LITE 12/12 BTL | PREMIUM | 1 | Side | 2 |
| 3579 | 3410057636 | | 3 | LITE 12/12 CAN | PREMIUM | 1 | Top 90 | 3 |
| 10164 | 7199000048 | | 6 | COORS LIGHT 12/12 CAN | PREMIUM | 1 | Top 90 | 3 |

Name: 1_4 W:24.00 in D:27.00 in Avail Space: 1.96 in Ht Space: 19.00 in

| ID | UPC | Barcode | | Name | Category | HFacings | Orientation | Units |
|-------|------------|---------|---|-------------------------|----------|----------|-------------|-------|
| 61975 | 1820020077 | | 9 | NATURAL LIGHT 15/12 CAN | ECONOMY | 1 | Top 90 | 3 |
| 66288 | 1820028443 | | 4 | NATURAL ICE 15/12 CAN | ECONOMY | 1 | Side | 4 |
| 3198 | 3410001509 | | 1 | HIGH LIFE 12/12 BTL | ECONOMY | 1 | Side | 4 |
| 3552 | 3410057340 | | 9 | LITE 18/12 CAN | PREMIUM | 1 | Top 90 | 3 |

Name: 2_1 W:24.00 in D:27.00 in Avail Space: 1.95 in Ht Space: 11.00 in

| ID | UPC | Barcode | | Name | Category | HFacings | Orientation | Units |
|-------|------------|---------|---|----------------------|----------|----------|-------------|-------|
| 10372 | 7199030120 | | 0 | COORS LIGHT 3/24 CAN | PREMIUM | 2 | Side | 6 |
| 1256 | 1820008981 | | 7 | BUD 8/16 CAN | PREMIUM | 1 | Top 90 | 5 |
| 1297 | 1820011047 | | 4 | BUD 12/12 CAN | PREMIUM | 1 | Top 90 | 3 |
| 1083 | 1820000833 | | 7 | BUD LIGHT 6/12 BTL | PREMIUM | 1 | Side | 3 |

Name: 2_2 W:24.00 in D:27.00 in Avail Space: 1.88 in Ht Space: 10.00 in

| ID | UPC | Barcode | | Name | Category | HFacings | Orientation | Units |
|-------|------------|---------|---|-----------------------|----------|----------|-------------|-------|
| 10348 | 7199030069 | | 2 | COORS LIGHT 12/12 BTL | PREMIUM | 1 | Side | 2 |



CVS # 984 COLD

Address: 201 GLEN ST | City: GLEN COVE | State: NY

Chain/StoreNumer: CVS - EAST 984

Reset Name: 2019 SPRING

Planogram Name: 984_6_DOOR_COLD

| | | | | | | | |
|------|-----------|--|---------------------|---------|---|------|---|
| 1058 | 182000771 | | BUD 12/12 BTL | PREMIUM | 1 | Side | 2 |
| 1056 | 182000769 | | BUD LIGHT 12/12 BTL | PREMIUM | 1 | Side | 2 |

Name: 2_3 W:24.00 in D:27.00 in Avail Space: 1.60 in Ht Space: 11.00 in

| ID | UPC | Barcode | Name | Category | HFacings | Orientation | Units |
|-------|------------|---------|-----------------------|----------|----------|-------------|-------|
| 10329 | 7199030017 | | COORS LIGHT 18/12 CAN | PREMIUM | 1 | Side 90 | 2 |
| 1307 | 1820011218 | | BUD 18/12 CAN | PREMIUM | 1 | Side | 1 |
| 1667 | 1820053218 | | BUD LIGHT 18/12 CAN | PREMIUM | 1 | Side | 1 |
| 1659 | 1820053047 | | BUD LIGHT 12/12 CAN | PREMIUM | 1 | Top 90 | 3 |

Name: 2_4 W:24.00 in D:27.00 in Avail Space: 1.65 in Ht Space: 19.00 in

| ID | UPC | Barcode | Name | Category | HFacings | Orientation | Units |
|-------|------------|---------|-----------------------|----------|----------|-------------|-------|
| 10352 | 7199030078 | | COORS LIGHT 18/12 BTL | PREMIUM | 1 | Side | 2 |
| 1310 | 1820011308 | | BUD 18/12 BTL | PREMIUM | 1 | Side | 2 |
| 1670 | 1820053308 | | BUD LIGHT 18/12 BTL | PREMIUM | 1 | Side | 2 |

Name: 3_1 W:24.00 in D:27.00 in Avail Space: 3.44 in Ht Space: 11.00 in

| ID | UPC | Barcode | Name | Category | HFacings | Orientation | Units |
|-------|------------|---------|---------------------------|---------------|----------|-------------|-------|
| 67176 | 1820020079 | | BUD LIGHT ORANGE 6/12 BTL | ABOVE PREMIUM | 1 | Side | 3 |
| 51878 | 3354495053 | | CORONA FAMILIAR 12/12 BTL | ABOVE PREMIUM | 1 | Side | 2 |
| 44952 | 3354495042 | | CORONA PREMIER 12/12 BTL | ABOVE PREMIUM | 1 | Side | 2 |

Name: 3_2 W:24.00 in D:27.00 in Avail Space: 0.49 in Ht Space: 10.00 in

| ID | UPC | Barcode | Name | Category | HFacings | Orientation | Units |
|-------|------------|---------|--------------------------|---------------|----------|-------------|-------|
| 1228 | 1820005990 | | MICHELOB ULTRA 12/12 BTL | ABOVE PREMIUM | 1 | Side | 2 |
| 10790 | 7231123021 | | SOL 12/12 BTL | ABOVE PREMIUM | 1 | Side | 2 |



CVS # 984 COLD

Address: 201 GLEN ST | City: GLEN COVE | State: NY

Chain/StoreNumer: CVS - EAST 984

Reset Name: 2019 SPRING

Planogram Name: 984_6_DOOR_COLD

| | | | | | | | |
|-------|------------|--|--------------------------|---------------|---|-------|---|
| 15442 | 8066095765 | | MODELO ESPECIAL 6/12 BTL | ABOVE PREMIUM | 1 | Front | 4 |
|-------|------------|--|--------------------------|---------------|---|-------|---|

Name: 3_3 W:24.00 in D:27.00 in Avail Space: 0.45 in Ht Space: 10.00 in

| ID | UPC | Barcode | Name | Category | HFacings | Orientation | Units |
|-------|------------|---------|---------------------------|---------------|----------|-------------|-------|
| 1850 | 1820096721 | | MICHELOB ULTRA 18/12 CAN | ABOVE PREMIUM | 1 | Side | 1 |
| 15429 | 8066095715 | | MODELO ESPECIAL 12/12 CAN | ABOVE PREMIUM | 1 | Side | 2 |
| 15436 | 8066095757 | | MODELO ESPECIAL 12/12 BTL | ABOVE PREMIUM | 1 | Front | 2 |

Name: 3_4 W:24.00 in D:27.00 in Avail Space: 2.31 in Ht Space: 20.00 in

| ID | UPC | Barcode | Name | Category | HFacings | Orientation | Units |
|-------|------------|---------|---------------------------|---------------|----------|-------------|-------|
| 15436 | 8066095757 | | MODELO ESPECIAL 12/12 BTL | ABOVE PREMIUM | 1 | Front | 4 |
| 15436 | 8066095757 | | MODELO ESPECIAL 12/12 BTL | ABOVE PREMIUM | 1 | Side | 4 |

Name: 4_1 W:24.00 in D:27.00 in Avail Space: 2.81 in Ht Space: 11.00 in

| ID | UPC | Barcode | Name | Category | HFacings | Orientation | Units |
|-------|------------|---------|------------------------------|---------------|----------|-------------|-------|
| 15426 | 8066095695 | | CORONA 12/12 CAN | ABOVE PREMIUM | 1 | Side | 2 |
| 15406 | 8066095621 | | CORONA LIGHT 12/12 CAN | ABOVE PREMIUM | 1 | Top 90 | 3 |
| 17293 | 8382012360 | | GUINNESS DRAUGHT STOUT ... | ABOVE PREMIUM | 1 | Front | 5 |
| 17305 | 8382012393 | | GUINNESS EXTRA STOUT 6/12... | ABOVE PREMIUM | 1 | Side | 3 |

Name: 4_2 W:24.00 in D:27.00 in Avail Space: 0.68 in Ht Space: 10.00 in

| ID | UPC | Barcode | Name | Category | HFacings | Orientation | Units |
|-------|------------|---------|----------------------------|---------------|----------|-------------|-------|
| 15400 | 8066095605 | | CORONA 6/12 BTL | ABOVE PREMIUM | 1 | Side | 3 |
| 15408 | 8066095625 | | CORONA LIGHT 6/12 BTL | ABOVE PREMIUM | 1 | Side | 3 |
| 15416 | 8066095675 | | CORONA LIGHT 12/12 BTL | ABOVE PREMIUM | 1 | Side | 2 |
| 22090 | 8769282102 | | ANGRY ORCHARD CRISP APP... | ABOVE PREMIUM | 1 | Side | 3 |

Name: 4_3 W:24.00 in D:27.00 in Avail Space: 0.72 in Ht Space: 10.00 in



CVS # 984 COLD

Address: 201 GLEN ST | City: GLEN COVE | State: NY

Chain/StoreNumer: CVS - EAST 984

Reset Name: 2019 SPRING

Planogram Name: 984_6_DOOR_COLD

| ID | UPC | Barcode | Name | Category | HFacings | Orientation | Units |
|-------|------------|---------|------------------|---------------|----------|-------------|-------|
| 15403 | 8066095615 | | CORONA 12/12 BTL | ABOVE PREMIUM | 3 | Side | 6 |

Name: 4_4 W:24.00 in D:27.00 in Avail Space: 0.72 in Ht Space: 20.00 in

| ID | UPC | Barcode | Name | Category | HFacings | Orientation | Units |
|-------|------------|---------|------------------|---------------|----------|-------------|-------|
| 15403 | 8066095615 | | CORONA 12/12 BTL | ABOVE PREMIUM | 3 | Side | 12 |

Name: 5_1 W:24.00 in D:27.00 in Avail Space: 0.51 in Ht Space: 11.00 in

| ID | UPC | Barcode | Name | Category | HFacings | Orientation | Units |
|-------|-------------|---------|-------------------------------|---------------|----------|-------------|-------|
| 86777 | 3354400013 | | CORONA REFRESCA VARIETY... | ABOVE PREMIUM | 1 | Front 90 | 4 |
| 19178 | 85389700227 | | BON AND VIV SPIKED SELTZE... | ABOVE PREMIUM | 1 | Front 90 | 4 |
| 43031 | 8769200424 | | TRULY VARIETY PACK 12/12 C... | ABOVE PREMIUM | 1 | Front 90 | 4 |
| 5177 | 60690500830 | | ITHACA FLOWER POWER 6/12 ... | ABOVE PREMIUM | 1 | Side | 3 |

Name: 5_2 W:24.00 in D:27.00 in Avail Space: 1.74 in Ht Space: 10.00 in

| ID | UPC | Barcode | Name | Category | HFacings | Orientation | Units |
|-------|-------------|---------|--------------------------------|---------------|----------|-------------|-------|
| 6402 | 63598506744 | | MIKES HARD BLACK CHERRY L... | ABOVE PREMIUM | 1 | Side | 3 |
| 6413 | 63598510062 | | MIKES HARD LEMONADE 6/11.... | ABOVE PREMIUM | 1 | Side | 3 |
| 86788 | 3410051681 | | CAPE LINE VARIETY PACK 12/1... | ABOVE PREMIUM | 1 | Front 90 | 3 |
| 45151 | 63598554890 | | WHITE CLAW VARIETY PACK 1... | ABOVE PREMIUM | 1 | Front 90 | 4 |

Name: 5_3 W:24.00 in D:27.00 in Avail Space: 2.09 in Ht Space: 10.00 in

| ID | UPC | Barcode | Name | Category | HFacings | Orientation | Units |
|-------|------------|---------|--------------------------|---------------|----------|-------------|-------|
| 16691 | 8248812300 | | BECKS 12/12 BTL | ABOVE PREMIUM | 1 | Side | 2 |
| 11342 | 7289000159 | | HEINEKEN LIGHT 12/12 BTL | ABOVE PREMIUM | 1 | Side | 2 |
| 11300 | 7289000016 | | HEINEKEN 12/12 BTL | ABOVE PREMIUM | 1 | Side | 2 |

Name: 5_4 W:24.00 in D:27.00 in Avail Space: 0.72 in Ht Space: 20.00 in

| ID | UPC | Barcode | Name | Category | HFacings | Orientation | Units |
|----|-----|---------|------|----------|----------|-------------|-------|
|----|-----|---------|------|----------|----------|-------------|-------|



CVS # 984 COLD

Address: 201 GLEN ST | City: GLEN COVE | State: NY

Chain/StoreNumer: CVS - EAST 984

Reset Name: 2019 SPRING

Planogram Name: 984_6_DOOR_COLD

| | | | | | | | | |
|-------|------------|--|---|------------------|---------------|---|------|----|
| 15403 | 8066095615 | | 2 | CORONA 12/12 BTL | ABOVE PREMIUM | 3 | Side | 12 |
|-------|------------|--|---|------------------|---------------|---|------|----|

Name: 6_1 W:24.00 in D:27.00 in Avail Space: 3.91 in Ht Space: 10.00 in

| ID | UPC | Barcode | Name | Category | HFacings | Orientation | Units | |
|-------|-------------|---------|------|-------------------------------|---------------|-------------|-------|---|
| 7900 | 68174511102 | | 4 | BLUE POINT HOPTICAL ILLUSI... | ABOVE PREMIUM | 1 | Side | 3 |
| 7908 | 68174511118 | | 5 | BLUE POINT SEASONAL 6/12 B... | ABOVE PREMIUM | 1 | Side | 3 |
| 21995 | 8769230050 | | 2 | SAMUEL ADAMS SEASONAL 6/... | ABOVE PREMIUM | 1 | Side | 3 |
| 6748 | 63848900029 | | 9 | DOGFISH HEAD 60 MINUTE IPA... | ABOVE PREMIUM | 1 | Side | 3 |

Name: 6_2 W:24.00 in D:27.00 in Avail Space: 0.90 in Ht Space: 11.00 in

| ID | UPC | Barcode | Name | Category | HFacings | Orientation | Units | |
|-------|------------|---------|------|-------------------------------|---------------|-------------|-------|---|
| 17212 | 8378337521 | | 3 | SIERRA NEVADA PALE ALE 6/1... | ABOVE PREMIUM | 1 | Side | 3 |
| 3492 | 3410051605 | | 5 | LEINIES SEASONAL SHANDY 6... | ABOVE PREMIUM | 1 | Side | 3 |
| 10180 | 7199009511 | | 6 | BLUE MOON BELGIAN WHITE 6... | ABOVE PREMIUM | 1 | Side | 3 |
| 10183 | 7199009516 | | 1 | BLUE MOON BELGIAN WHITE 1... | ABOVE PREMIUM | 1 | Side | 2 |

Name: 6_3 W:24.00 in D:27.00 in Avail Space: 1.79 in Ht Space: 10.00 in

| ID | UPC | Barcode | Name | Category | HFacings | Orientation | Units | |
|-------|-------------|---------|------|---------------------------|---------------|-------------|-------|---|
| 11301 | 7289000020 | | 0 | HEINEKEN 12/12 CAN | ABOVE PREMIUM | 1 | Side | 2 |
| 11298 | 7289000011 | | 8 | HEINEKEN 6/12 BTL | ABOVE PREMIUM | 1 | Side | 3 |
| 14089 | 78615000001 | | 4 | STELLA ARTOIS 6/11.2 BTL | ABOVE PREMIUM | 1 | Side | 3 |
| 14094 | 78615000014 | | 4 | STELLA ARTOIS 12/11.2 BTL | ABOVE PREMIUM | 1 | Side | 2 |

Name: 6_4 W:24.00 in D:27.00 in Avail Space: 2.04 in Ht Space: 20.00 in

| ID | UPC | Barcode | Name | Category | HFacings | Orientation | Units | |
|-------|------------|---------|------|--------------------|---------------|-------------|-------|----|
| 11300 | 7289000016 | | 3 | HEINEKEN 12/12 BTL | ABOVE PREMIUM | 3 | Side | 12 |