





CVS # 2698 COLD

Address: 4331 NESCONSET HWY | City: PORT JEFFERSON STATION | State: NY

Chain/StoreNumer: CVS - EAST 2698

Reset Name: 2019 SPRING

Planogram Name: 2698_2_DOOR_COLD

Segment # 1 : 1_5 - 2 DEPTH: 24 In WIDTH: 22 In DISTANCE FROM TOP OF BASE SHELF TO BOTTOM OF SHELF:0.00 In							
POS #	FAC	UPC	NAME	CASES	CAPACITY	UNITS HIGH	Category
1	1	7289000020	HEINEKEN 12/12 CAN	2.0	4	1	ABOVE PREMIUM
2	1	7289000016	HEINEKEN 12/12 BTL	2.0	4	1	ABOVE PREMIUM
3	1	8066095615	CORONA 12/12 BTL	2.0	4	1	ABOVE PREMIUM

Segment # 1 : 1_4 - 2 DEPTH: 24 In WIDTH: 22 In DISTANCE FROM TOP OF BASE SHELF TO BOTTOM OF SHELF:22.00 In							
POS #	FAC	UPC	NAME	CASES	CAPACITY	UNITS HIGH	Category
1	1	7289000159	HEINEKEN LIGHT 12/12 BTL	2.0	4	1	ABOVE PREMIUM
2	1	8066095695	CORONA 12/12 CAN	2.0	4	1	ABOVE PREMIUM
3	1	8066095675	CORONA LIGHT 12/12 BTL	2.0	4	1	ABOVE PREMIUM

Segment # 1 : 1_3 - 2 DEPTH: 24 In WIDTH: 22 In DISTANCE FROM TOP OF BASE SHELF TO BOTTOM OF SHELF:43.00 In							
POS #	FAC	UPC	NAME	CASES	CAPACITY	UNITS HIGH	Category
1	1	7289000011	HEINEKEN 6/12 BTL	0.8	3	1	ABOVE PREMIUM
2	1	7861500014	STELLA ARTOIS 12/11.2 BTL	1.0	2	1	ABOVE PREMIUM
3	1	3354495042	CORONA PREMIER 12/12 BTL	1.0	2	1	ABOVE PREMIUM

Segment # 1 : 1_2 - 2 DEPTH: 24 In WIDTH: 22 In DISTANCE FROM TOP OF BASE SHELF TO BOTTOM OF SHELF:54.00 In							
POS #	FAC	UPC	NAME	CASES	CAPACITY	UNITS HIGH	Category
1	1	7199009511	BLUE MOON BELGIAN WHITE 6/12 BTL	0.8	3	1	ABOVE PREMIUM
2	1	7861500001	STELLA ARTOIS 6/11.2 BTL	0.8	3	1	ABOVE PREMIUM
3	1	8066095605	CORONA 6/12 BTL	0.8	3	1	ABOVE PREMIUM
4	1	8066095715	MODELO ESPECIAL 12/12 CAN	1.0	2	1	ABOVE PREMIUM

Segment # 1 : 1_1 - 2 DEPTH: 24 In WIDTH: 22 In DISTANCE FROM TOP OF BASE SHELF TO BOTTOM OF SHELF:66.00 In							
POS #	FAC	UPC	NAME	CASES	CAPACITY	UNITS HIGH	Category
1	1	86273700006	MONTAUK SUMMER 6/12 CAN (WRAP)	1.5	6	1	ABOVE PREMIUM
2	1	86907100027	MONTAUK WAVE CHASER 4/6/12 CAN	1.5	6	1	ABOVE PREMIUM
3	1	86907100026	MONTAUK WATERMELLOW 6/12 CAN	1.5	6	1	ABOVE PREMIUM
4	1	75452700022	NEW BELGIUM FAT TIRE 6/12 BTL	0.8	3	1	ABOVE PREMIUM

Segment # 2 : 1_5 - 1 DEPTH: 24 In WIDTH: 22 In DISTANCE FROM TOP OF BASE SHELF TO BOTTOM OF SHELF:0.00 In							
POS #	FAC	UPC	NAME	CASES	CAPACITY	UNITS HIGH	Category
1	1	1820053218	BUD LIGHT 18/12 CAN	3.0	3	1	PREMIUM
2	1	7199030017	COORS LIGHT 18/12 CAN	3.0	3	1	PREMIUM
3	1	1820011218	BUD 18/12 CAN	3.0	3	1	PREMIUM
4	1	3410057340	LITE 18/12 CAN	3.0	3	1	PREMIUM

Segment # 2 : 1_4 - 1 DEPTH: 24 In WIDTH: 22 In DISTANCE FROM TOP OF BASE SHELF TO BOTTOM OF SHELF:22.00 In							
POS #	FAC	UPC	NAME	CASES	CAPACITY	UNITS HIGH	Category
1	1	1820053047	BUD LIGHT 12/12 CAN	2.0	4	1	PREMIUM
2	1	1820000769	BUD LIGHT 12/12 BTL	2.0	4	1	PREMIUM
3	1	7199030069	COORS LIGHT 12/12 BTL	2.0	4	1	PREMIUM



CVS # 2698 COLD

Address: 4331 NESCONSET HWY | City: PORT JEFFERSON STATION | State: NY

Chain/StoreNumer: CVS - EAST 2698

Reset Name: 2019 SPRING

Planogram Name: 2698_2_DOOR_COLD

Segment # 2 : 1_3 - 1 DEPTH: 24 In WIDTH: 22 In DISTANCE FROM TOP OF BASE SHELF TO BOTTOM OF SHELF:42.00 In

POS #	FAC	UPC	NAME	CASES	CAPACITY	UNITS HIGH	Category
1	1	1820011047	BUD 12/12 CAN	1.5	3	1	PREMIUM
2	1	7199000048	COORS LIGHT 12/12 CAN	1.5	3	1	PREMIUM
3	1	3410057636	LITE 12/12 CAN	1.5	3	1	PREMIUM
4	1	2210000170	PABST 12/12 CAN	1.5	3	1	ECONOMY

Segment # 2 : 1_2 - 1 DEPTH: 24 In WIDTH: 22 In DISTANCE FROM TOP OF BASE SHELF TO BOTTOM OF SHELF:54.00 In

POS #	FAC	UPC	NAME	CASES	CAPACITY	UNITS HIGH	Category
1	1	1820005990	MICHELOB ULTRA 12/12 BTL	1.0	2	1	ABOVE PREMIUM
2	1	1820053308	BUD LIGHT 18/12 BTL	1.0	1	1	PREMIUM
3	1	1820028443	NATURAL ICE 15/12 CAN	0.5	1	1	ECONOMY

Segment # 2 : 1_1 - 1 DEPTH: 24 In WIDTH: 22 In DISTANCE FROM TOP OF BASE SHELF TO BOTTOM OF SHELF:66.00 In

POS #	FAC	UPC	NAME	CASES	CAPACITY	UNITS HIGH	Category
1	1	68174511112	BLUE POINT TOASTED LAGER 6/12 BTL	0.8	3	1	ABOVE PREMIUM
2	1	7199030120	COORS LIGHT 3/24 CAN	0.5	2	1	PREMIUM
3	1	8769283231	TWISTED TEA ORIGINAL 1/24 CAN	0.7	8	1	ABOVE PREMIUM
4	1	8066095643	CORONA 1/24 CAN	0.7	8	1	ABOVE PREMIUM
5	1	3410001509	HIGH LIFE 12/12 BTL	1.0	2	1	ECONOMY

POS #	FAC	UPC	NAME	CASES	CAPACITY	UNITS HIGH	Category
6	1	63598554890	WHITE CLAW VARIETY PACK 12/12 CAN	2.0	4	1	ABOVE PREMIUM

REVERSE VIEW (ONLY IF NEEDED)





CVS # 2698 COLD

Reset Timing 2019 SPRING

Address: 4331 NESCONSET HWY | City: PORT JEFFERSON STATION | State: NY

REVERSE VIEW (ONLY IF NEEDED)

Segment:
1 of 2



Segment # 1 : 1_5 - 2 0.00 In

POS	UPC	NAME
1	7289000020	HEINEKEN 12/ 12 CAN
2	7289000016	HEINEKEN 12/ 12 BTL
3	8066095615	CORONA 12/ 12 BTL

Segment # 1 : 1_4 - 2 22.00 In

POS	UPC	NAME
1	7289000159	HEINEKEN LIGHT 12/ 12 BTL
2	8066095695	CORONA 12/ 12 CAN
3	8066095675	CORONA LIGHT 12/ 12 BTL

Segment # 1 : 1_3 - 2 43.00 In

POS	UPC	NAME
1	7289000011	HEINEKEN 6/ 12 BTL
2	78615000014	STELLA ARTOIS 12/ 11.2 BTL
3	3354495042	CORONA PREMIER 12/ 12 BTL

Segment # 1 : 1_2 - 2 54.00 In

POS	UPC	NAME
1	7199009511	BLUE MOON BELGIAN WHITE 6/ 12 BTL
2	78615000001	STELLA ARTOIS 6/ 11.2 BTL
3	8066095605	CORONA 6/ 12 BTL
4	8066095715	MODELO ESPECIAL 12/ 12 CAN

Segment # 1 : 1_1 - 2 66.00 In

POS	UPC	NAME
1	86273700006	MONTAUK SUMMER 6/ 12 CAN (WRAP)
2	86907100027	MONTAUK WAVE CHASER 4/ 6/ 12 CAN
3	86907100026	MONTAUK WATERMELLOW 6/ 12 CAN
4	75452700022	NEW BELGIUM FAT TIRE 6/ 12 BTL

POS	UPC	NAME
6	63598554890	WHITE CLAW VARIETY PACK 12/ 12 CAN



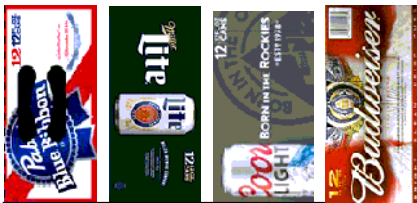
CVS # 2698 COLD

Reset Timing 2019 SPRING

Address: 4331 NESCONSET HWY | City: PORT JEFFERSON STATION | State: NY

REVERSE VIEW (ONLY IF NEEDED)

Segment:
2 of 2



Segment # 2 : 1_5 - 1 0.00 In

POS	UPC	NAME
1	1820053218	BUD LIGHT 18/ 12 CAN
2	7199030017	COORS LIGHT 18/ 12 CAN
3	1820011218	BUD 18/ 12 CAN
4	3410057340	LITE 18/ 12 CAN

Segment # 2 : 1_4 - 1 22.00 In

POS	UPC	NAME
1	1820053047	BUD LIGHT 12/ 12 CAN
2	1820000769	BUD LIGHT 12/ 12 BTL
3	7199030069	COORS LIGHT 12/ 12 BTL

Segment # 2 : 1_3 - 1 42.00 In

POS	UPC	NAME
1	1820011047	BUD 12/ 12 CAN
2	7199000048	COORS LIGHT 12/ 12 CAN
3	3410057636	LITE 12/ 12 CAN
4	2210000170	PABST 12/ 12 CAN

Segment # 2 : 1_2 - 1 54.00 In

POS	UPC	NAME
1	1820005990	MICHELOB ULTRA 12/ 12 BTL
2	1820053308	BUD LIGHT 18/ 12 BTL
3	1820028443	NATURAL ICE 15/ 12 CAN

Segment # 2 : 1_1 - 1 66.00 In

POS	UPC	NAME
1	68174511112	BLUE POINT TOASTED LAGER 6/ 12 BTL
2	7199030120	COORS LIGHT 3/ 24 CAN
3	8769283231	TWISTED TEA ORIGINAL 1/ 24 CAN
4	8066095643	CORONA 1/ 24 CAN
5	3410001509	HIGH LIFE 12/ 12 BTL



CVS # 2698 COLD

Address: 4331 NESCONSET HWY | City: PORT JEFFERSON STATION | State: NY

Chain/StoreNumer: CVS - EAST 2698

Reset Name: 2019 SPRING

Planogram Name: 2698_2_DOOR_COLD

CVS PHARMA... Store # 2698 H: 6 ft 5.00 in W: 3 ft 8.00 in D: 2 ft # of segments: 2

Name: 1_1 - 2 W:22.00 in D:24.00 in Avail Space: 1.53 in Ht Space: 10.00 in

ID	UPC	Barcode	Name	Category	HFacings	Orientation	Units
48714	86273700006	8 62737 00006 3	MONTAUK SUMMER 6/12 CAN (...)	ABOVE PREMIUM	1	Side	6
52895	86907100027	8 69071 00027 8	MONTAUK WAVE CHASER 4/6/...	ABOVE PREMIUM	1	Side	6
52894	86907100026	8 69071 00026 1	MONTAUK WATERMELLOW 6/...	ABOVE PREMIUM	1	Side	6
13009	75452700022	7 54527 00022 6	NEW BELGIUM FAT TIRE 6/12 B...	ABOVE PREMIUM	1	Side	3

Name: 1_2 - 2 W:22.00 in D:24.00 in Avail Space: 1.94 in Ht Space: 11.00 in

ID	UPC	Barcode	Name	Category	HFacings	Orientation	Units
10180	7199009511	0 71990 09511 6	BLUE MOON BELGIAN WHITE 6...	ABOVE PREMIUM	1	Side	3
14089	78615000001	7 86150 00001 4	STELLA ARTOIS 6/11.2 BTL	ABOVE PREMIUM	1	Side	3
15400	8066095605	0 80660 95605 3	CORONA 6/12 BTL	ABOVE PREMIUM	1	Side	3
15429	8066095715	0 80660 95715 9	MODELO ESPECIAL 12/12 CAN	ABOVE PREMIUM	1	Side	2

Name: 1_3 - 2 W:22.00 in D:24.00 in Avail Space: 1.83 in Ht Space: 10.00 in

ID	UPC	Barcode	Name	Category	HFacings	Orientation	Units
11298	7289000011	0 72890 00011 8	HEINEKEN 6/12 BTL	ABOVE PREMIUM	1	Side	3
14094	78615000014	7 86150 00014 4	STELLA ARTOIS 12/11.2 BTL	ABOVE PREMIUM	1	Side	2
44952	3354495042	0 33544 95042 5	CORONA PREMIER 12/12 BTL	ABOVE PREMIUM	1	Side	2

Name: 1_4 - 2 W:22.00 in D:24.00 in Avail Space: 2.01 in Ht Space: 20.00 in

ID	UPC	Barcode	Name	Category	HFacings	Orientation	Units
11342	7289000159	0 72890 00159 7	HEINEKEN LIGHT 12/12 BTL	ABOVE PREMIUM	1	Side	4
15426	8066095695	0 80660 95695 4	CORONA 12/12 CAN	ABOVE PREMIUM	1	Side	4
15416	8066095675	0 80660 95675 6	CORONA LIGHT 12/12 BTL	ABOVE PREMIUM	1	Side	4



CVS # 2698 COLD

Address: 4331 NESCONSET HWY | City: PORT JEFFERSON STATION | State: NY

Chain/StoreNumer: CVS - EAST 2698

Reset Name: 2019 SPRING

Planogram Name: 2698_2_DOOR_COLD

Name: 1_5 - 2		W:22.00 in	D:24.00 in	Avail Space: 1.96 in		Ht Space: 21.00 in	
ID	UPC	Barcode	Name	Category	HFacings	Orientation	Units
11301	7289000020		HEINEKEN 12/12 CAN	ABOVE PREMIUM	1	Side	4
11300	7289000016		HEINEKEN 12/12 BTL	ABOVE PREMIUM	1	Side	4
15403	8066095615		CORONA 12/12 BTL	ABOVE PREMIUM	1	Side	4

Name: 1_1 - 1		W:22.00 in	D:24.00 in	Avail Space: 0.99 in		Ht Space: 10.00 in	
ID	UPC	Barcode	Name	Category	HFacings	Orientation	Units
7902	68174511112		BLUE POINT TOASTED LAGER...	ABOVE PREMIUM	1	Side	3
10372	7199030120		COORS LIGHT 3/24 CAN	PREMIUM	1	Side	2
22099	8769283231		TWISTED TEA ORIGINAL 1/24 C...	ABOVE PREMIUM	1	Side	8
15415	8066095643		CORONA 1/24 CAN	ABOVE PREMIUM	1	Side	8
3198	3410001509		HIGH LIFE 12/12 BTL	ECONOMY	1	Side	2

Name: 1_2 - 1		W:22.00 in	D:24.00 in	Avail Space: 2.44 in		Ht Space: 11.00 in	
ID	UPC	Barcode	Name	Category	HFacings	Orientation	Units
1228	1820005990		MICHELOB ULTRA 12/12 BTL	ABOVE PREMIUM	1	Side	2
1670	1820053308		BUD LIGHT 18/12 BTL	PREMIUM	1	Side	1
66288	1820028443		NATURAL ICE 15/12 CAN	ECONOMY	1	Side	1

Name: 1_3 - 1		W:22.00 in	D:24.00 in	Avail Space: 1.98 in		Ht Space: 11.00 in	
ID	UPC	Barcode	Name	Category	HFacings	Orientation	Units
1297	1820011047		BUD 12/12 CAN	PREMIUM	1	Top 90	3
10164	7199000048		COORS LIGHT 12/12 CAN	PREMIUM	1	Top 90	3
3579	3410057636		LITE 12/12 CAN	PREMIUM	1	Top 90	3



CVS # 2698 COLD

Address: 4331 NESCONSET HWY | City: PORT JEFFERSON STATION | State: NY

Chain/StoreNumer: CVS - EAST 2698

Reset Name: 2019 SPRING

Planogram Name: 2698_2_DOOR_COLD

2241	2210000170		1	PABST 12/12 CAN	ECONOMY	1	Top 90	3
------	------------	--	---	-----------------	---------	---	--------	---

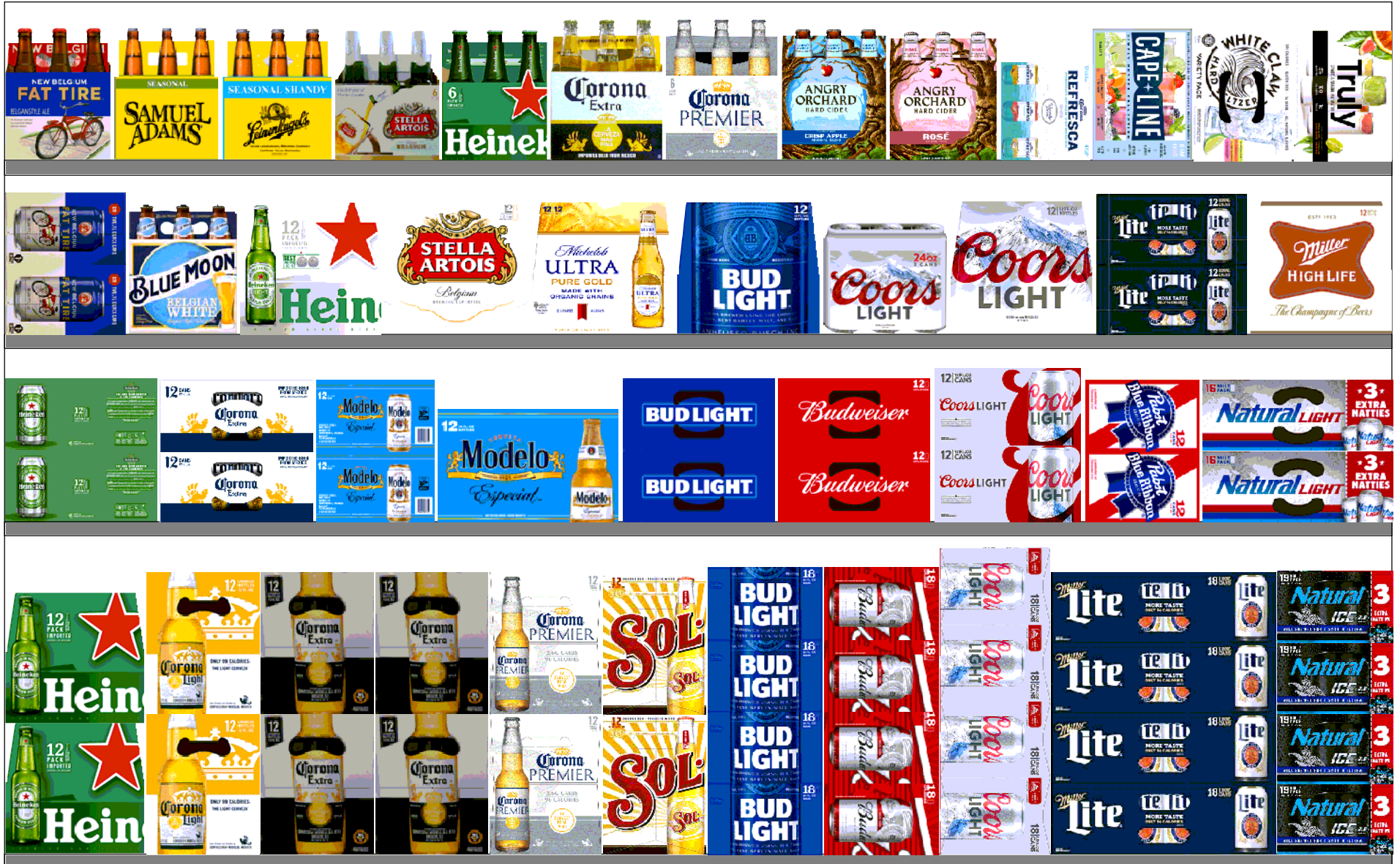
Name: 1_4 - 1 W:22.00 in D:24.00 in Avail Space: 2.28 in Ht Space: 19.00 in

ID	UPC	Barcode	Name	Category	HFacings	Orientation	Units
1659	1820053047		BUD LIGHT 12/12 CAN	PREMIUM	1	Side	4
1056	1820000769		BUD LIGHT 12/12 BTL	PREMIUM	1	Side	4
10348	7199030069		COORS LIGHT 12/12 BTL	PREMIUM	1	Side	4

Name: 1_5 - 1 W:22.00 in D:24.00 in Avail Space: 1.92 in Ht Space: 21.00 in

ID	UPC	Barcode	Name	Category	HFacings	Orientation	Units
1667	1820053218		BUD LIGHT 18/12 CAN	PREMIUM	1	Top 90	3
10329	7199030017		COORS LIGHT 18/12 CAN	PREMIUM	1	Top 90	3
1307	1820011218		BUD 18/12 CAN	PREMIUM	1	Top 90	3
3552	3410057340		LITE 18/12 CAN	PREMIUM	1	Top 90	3

ID	UPC	Barcode	Name	Category	HFacings	Orientation	Units
45151	63598554890		WHITE CLAW VARIETY PACK 1...	ABOVE PREMIUM	1	Side 90	4





CVS # 2698 WARM

Address: 4331 NESCONSET HWY | City: PORT JEFFERSON STATION | State: NY

Chain/StoreNumer: CVS - EAST 2698

Reset Name: 2019 SPRING

Planogram Name: 2698_8ft_OPEN_WARM

Segment # 1 : 1_4 DEPTH: 24 in WIDTH: 96 in DISTANCE FROM TOP OF BASE SHELF TO BOTTOM OF SHELF:0.00 in

POS #	FAC	UPC	NAME	CASES	CAPACITY	UNITS HIGH	Category
1	1	7289000016	HEINEKEN 12/12 BTL	3.0	6	1	ABOVE PREMIUM
2	1	8066095675	CORONA LIGHT 12/12 BTL	2.0	4	1	ABOVE PREMIUM
3	2	8066095615	CORONA 12/12 BTL	4.0	8	2	ABOVE PREMIUM
4	1	3354495042	CORONA PREMIER 12/12 BTL	2.0	4	1	ABOVE PREMIUM
5	1	7231123021	SOL 12/12 BTL	2.0	4	1	ABOVE PREMIUM
6	1	1820053218	BUD LIGHT 18/12 CAN	4.0	4	1	PREMIUM
7	1	1820011218	BUD 18/12 CAN	4.0	4	1	PREMIUM
8	1	7199030017	COORS LIGHT 18/12 CAN	4.0	4	1	PREMIUM
9	1	3410057340	LITE 18/12 CAN	12.0	12	1	PREMIUM
10	1	1820028443	NATURAL ICE 15/12 CAN	2.0	4	1	ECONOMY

Segment # 1 : 1_3 DEPTH: 24 in WIDTH: 96 in DISTANCE FROM TOP OF BASE SHELF TO BOTTOM OF SHELF:23.00 in

POS #	FAC	UPC	NAME	CASES	CAPACITY	UNITS HIGH	Category
1	1	7289000020	HEINEKEN 12/12 CAN	3.0	6	1	ABOVE PREMIUM
2	1	8066095695	CORONA 12/12 CAN	3.0	6	1	ABOVE PREMIUM
3	1	8066095715	MODELO ESPECIAL 12/12 CAN	2.0	4	1	ABOVE PREMIUM
4	1	8066095757	MODELO ESPECIAL 12/12 BTL	1.0	2	1	ABOVE PREMIUM
5	1	1820053047	BUD LIGHT 12/12 CAN	3.0	6	1	PREMIUM
6	1	1820011047	BUD 12/12 CAN	3.0	6	1	PREMIUM
7	1	7199000048	COORS LIGHT 12/12 CAN	3.0	6	1	PREMIUM
8	1	2210000170	PABST 12/12 CAN	2.0	4	1	ECONOMY
9	1	1820020077	NATURAL LIGHT 15/12 CAN	3.0	6	1	ECONOMY

Segment # 1 : 1_2 DEPTH: 24 in WIDTH: 96 in DISTANCE FROM TOP OF BASE SHELF TO BOTTOM OF SHELF:36.00 in

POS #	FAC	UPC	NAME	CASES	CAPACITY	UNITS HIGH	Category
1	1	75452700161	NEW BELGIUM FAT TIRE 12/12 CAN	2.0	4	1	ABOVE PREMIUM
2	1	7199009511	BLUE MOON BELGIAN WHITE 6/12 BTL	1.0	4	1	ABOVE PREMIUM
3	1	7289000159	HEINEKEN LIGHT 12/12 BTL	1.5	3	1	ABOVE PREMIUM
4	1	78615000014	STELLA ARTOIS 12/11.2 BTL	1.5	3	1	ABOVE PREMIUM
5	1	1820020083	MICHELOB ULTRA PURE GOLD 12/12 BTL	1.5	3	1	ABOVE PREMIUM
6	1	1820000769	BUD LIGHT 12/12 BTL	1.5	3	1	PREMIUM
7	1	7199030120	COORS LIGHT 3/24 CAN	2.0	8	1	PREMIUM
8	1	7199030069	COORS LIGHT 12/12 BTL	1.5	3	1	PREMIUM
9	1	3410057636	LITE 12/12 CAN	3.0	6	1	PREMIUM
10	1	3410001509	HIGH LIFE 12/12 BTL	1.5	3	1	ECONOMY

Segment # 1 : 1_1 DEPTH: 24 in WIDTH: 96 in DISTANCE FROM TOP OF BASE SHELF TO BOTTOM OF SHELF:48.00 in

POS #	FAC	UPC	NAME	CASES	CAPACITY	UNITS HIGH	Category
1	1	75452700022	NEW BELGIUM FAT TIRE 6/12 BTL	1.0	4	1	ABOVE PREMIUM
2	1	8769230050	SAMUEL ADAMS SEASONAL 6/12 BTL (A)	1.0	4	1	ABOVE PREMIUM
3	1	3410051605	LEINIES SEASONAL SHANDY 6/12 BTL	1.0	4	1	ABOVE PREMIUM
4	1	78615000001	STELLA ARTOIS 6/11.2 BTL	1.0	4	1	ABOVE PREMIUM
5	1	7289000011	HEINEKEN 6/12 BTL	1.0	4	1	ABOVE PREMIUM
6	1	8066095605	CORONA 6/12 BTL	1.0	4	1	ABOVE PREMIUM
7	1	3354495041	CORONA PREMIER 6/12 BTL	1.0	4	1	ABOVE PREMIUM
8	1	8769282102	ANGRY ORCHARD CRISP APPLE 6/12 BTL	1.0	4	1	ABOVE PREMIUM
9	1	8769200660	ANGRY ORCHARD ROSE 6/12 BTL	1.0	4	1	ABOVE PREMIUM
10	1	3354400013	CORONA REFRESCA VARIETY 12/12 CAN	1.0	2	1	ABOVE PREMIUM



CVS # 2698 WARM

Address: 4331 NESCONSET HWY | City: PORT JEFFERSON STATION | State: NY

Chain/StoreNumer: CVS - EAST 2698

Reset Name: 2019 SPRING

Planogram Name: 2698_8ft_OPEN_WARM

11	1	3410051681	CAPE LINE VARIETY PACK 12/12 CAN	1.5	3	1	ABOVE PREMIUM
12	1	63598554890	WHITE CLAW VARIETY PACK 12/12 CAN	1.5	3	1	ABOVE PREMIUM
13	1	8769200424	TRULY VARIETY PACK 12/12 CAN	1.5	3	1	ABOVE PREMIUM

REVERSE VIEW (ONLY IF NEEDED)





CVS # 2698 WARM

Reset Timing 2019 SPRING

Address: 4331 NESCONSET HWY | City: PORT JEFFERSON STATION | State: NY

REVERSE VIEW (ONLY IF NEEDED)

Segment:
1 of 1



Segment # 1 : 1_4 0.00 In

POS	UPC	NAME
1	7289000016	HEINEKEN 12/ 12 BTL
2	8066095675	CORONA LIGHT 12/ 12 BTL
3	8066095615	CORONA 12/ 12 BTL
4	3354495042	CORONA PREMIER 12/ 12 BTL
5	7231123021	SOL 12/ 12 BTL
6	1820053218	BUD LIGHT 18/ 12 CAN
7	1820011218	BUD 18/ 12 CAN
8	7199030017	COORS LIGHT 18/ 12 CAN
9	3410057340	LITE 18/ 12 CAN
10	1820028443	NATURAL ICE 15/ 12 CAN

Segment # 1 : 1_3 23.00 In

POS	UPC	NAME
1	7289000020	HEINEKEN 12/ 12 CAN
2	8066095695	CORONA 12/ 12 CAN
3	8066095715	MODELO ESPECIAL 12/ 12 CAN
4	8066095757	MODELO ESPECIAL 12/ 12 BTL
5	1820053047	BUD LIGHT 12/ 12 CAN
6	1820011047	BUD 12/ 12 CAN
7	7199000048	COORS LIGHT 12/ 12 CAN
8	2210000170	PABST 12/ 12 CAN
9	1820020077	NATURAL LIGHT 15/ 12 CAN

Segment # 1 : 1_2 36.00 In

POS	UPC	NAME
1	75452700161	NEW BELGIUM FAT TIRE 12/ 12 CAN
2	7199009511	BLUE MOON BELGIAN WHITE 6/ 12 BTL
3	7289000159	HEINEKEN LIGHT 12/ 12 BTL
4	78615000014	STELLA ARTOIS 12/ 11.2 BTL
5	1820020083	MICHELOB ULTRA PURE GOLD 12/ 12 BTL
6	1820000769	BUD LIGHT 12/ 12 BTL
7	7199030120	COORS LIGHT 3/ 24 CAN
8	7199030069	COORS LIGHT 12/ 12 BTL
9	3410057636	LITE 12/ 12 CAN
10	3410001509	HIGH LIFE 12/ 12 BTL

Segment # 1 : 1_1 48.00 In

POS	UPC	NAME
1	75452700022	NEW BELGIUM FAT TIRE 6/ 12 BTL
2	8769230050	SAMUEL ADAMS SEASONAL 6/ 12 BTL (A)
3	3410051605	LEINIES SEASONAL SHANDY 6/ 12 BTL
4	78615000001	STELLA ARTOIS 6/ 11.2 BTL
5	7289000011	HEINEKEN 6/ 12 BTL
6	8066095605	CORONA 6/ 12 BTL
7	3354495041	CORONA PREMIER 6/ 12 BTL
8	8769282102	ANGRY ORCHARD CRISP APPLE 6/ 12 BTL
9	8769200660	ANGRY ORCHARD ROSE 6/ 12 BTL
10	3354400013	CORONA REFRESCA VARIETY 12/ 12 CAN
11	3410051681	CAPE LINE VARIETY PACK 12/ 12 CAN
12	63598554890	WHITE CLAW VARIETY PACK 12/ 12 CAN
13	8769200424	TRULY VARIETY PACK 12/ 12 CAN



CVS # 2698 WARM

Address: 4331 NESCONSET HWY | City: PORT JEFFERSON STATION | State: NY

Chain/StoreNumer: CVS - EAST 2698

Reset Name: 2019 SPRING

Planogram Name: 2698_8ft_OPEN_WARM

CVS PHARMA... Store # 2698 H: 5 ft W: 8 ft D: 2 ft # of segments: 1

Name: 1_1 W:96.00 in D:24.00 in Avail Space: 2.40 in Ht Space: 11.00 in

ID	UPC	Barcode	Name	Category	HFacings	Orientation	Units
13009	75452700022	7 54527 00022 6	NEW BELGIUM FAT TIRE 6/12 B...	ABOVE PREMIUM	1	Front	4
21995	8769230050	0 87692 30050 2	SAMUEL ADAMS SEASONAL 6/...	ABOVE PREMIUM	1	Front	4
3492	3410051605	0 34100 51605 5	LEINIES SEASONAL SHANDY 6...	ABOVE PREMIUM	1	Front	4
14089	78615000001	7 86150 00001 4	STELLA ARTOIS 6/11.2 BTL	ABOVE PREMIUM	1	Front	4
11298	7289000011	0 72890 00011 8	HEINEKEN 6/12 BTL	ABOVE PREMIUM	1	Front	4
15400	8066095605	0 80660 95605 3	CORONA 6/12 BTL	ABOVE PREMIUM	1	Front	4
44964	3354495041	0 33544 95041 8	CORONA PREMIER 6/12 BTL	ABOVE PREMIUM	1	Front	4
22090	8769282102	0 87692 82102 1	ANGRY ORCHARD CRISP APP...	ABOVE PREMIUM	1	Front	4
65019	8769200660	0 87692 00660 2	ANGRY ORCHARD ROSE 6/12 ...	ABOVE PREMIUM	1	Front	4
86777	3354400013	0 33544 00013 7	CORONA REFRESCA VARIETY...	ABOVE PREMIUM	1	Side 90	2
86788	3410051681	0 34100 51681 9	CAPE LINE VARIETY PACK 12/1...	ABOVE PREMIUM	1	Top 90	3
45151	63598554890	6 35985 54890 4	WHITE CLAW VARIETY PACK 1...	ABOVE PREMIUM	1	Top 90	3
43031	8769200424	0 87692 00424 0	TRULY VARIETY PACK 12/12 C...	ABOVE PREMIUM	1	Top 90	3

Name: 1_2 W:96.00 in D:24.00 in Avail Space: 2.10 in Ht Space: 11.00 in

ID	UPC	Barcode	Name	Category	HFacings	Orientation	Units
13037	75452700161	7 54527 00161 2	NEW BELGIUM FAT TIRE 12/12 ...	ABOVE PREMIUM	1	Side 90	4
10180	7199009511	0 71990 09511 6	BLUE MOON BELGIAN WHITE 6...	ABOVE PREMIUM	1	Front	4



CVS # 2698 WARM

Address: 4331 NESCONSET HWY | City: PORT JEFFERSON STATION | State: NY

Chain/StoreNumer: CVS - EAST 2698

Reset Name: 2019 SPRING

Planogram Name: 2698_8ft_OPEN_WARM

11342	7289000159		HEINEKEN LIGHT 12/12 BTL	ABOVE PREMIUM	1	Front	3
14094	78615000014		STELLA ARTOIS 12/11.2 BTL	ABOVE PREMIUM	1	Front	3
65828	1820020083		MICHELOB ULTRA PURE GOLD...	ABOVE PREMIUM	1	Front	3
1056	1820000769		BUD LIGHT 12/12 BTL	PREMIUM	1	Front	3
10372	7199030120		COORS LIGHT 3/24 CAN	PREMIUM	1	Front	8
10348	7199030069		COORS LIGHT 12/12 BTL	PREMIUM	1	Front	3
3579	3410057636		LITE 12/12 CAN	PREMIUM	1	Top	6
3198	3410001509		HIGH LIFE 12/12 BTL	ECONOMY	1	Front	3

Name: 1_3 W:96.00 in D:24.00 in Avail Space: 2.31 in Ht Space: 12.00 in

ID	UPC	Barcode	Name	Category	HFacings	Orientation	Units
11301	7289000020		HEINEKEN 12/12 CAN	ABOVE PREMIUM	1	Top	6
15426	8066095695		CORONA 12/12 CAN	ABOVE PREMIUM	1	Top	6
15429	8066095715		MODELO ESPECIAL 12/12 CAN	ABOVE PREMIUM	1	Side 90	4
15436	8066095757		MODELO ESPECIAL 12/12 BTL	ABOVE PREMIUM	1	Front	2
1659	1820053047		BUD LIGHT 12/12 CAN	PREMIUM	1	Top	6
1297	1820011047		BUD 12/12 CAN	PREMIUM	1	Top	6
10164	7199000048		COORS LIGHT 12/12 CAN	PREMIUM	1	Top	6
2241	2210000170		PABST 12/12 CAN	ECONOMY	1	Side 90	4
61975	1820020077		NATURAL LIGHT 15/12 CAN	ECONOMY	1	Top	6













CVS # 2698 WARM

Address: 4331 NESCONSET HWY | City: PORT JEFFERSON STATION | State: NY

Chain/StoreNumer: CVS - EAST 2698

Reset Name: 2019 SPRING

Planogram Name: 2698_8ft_OPEN_WARM

Name: 1_4		W:96.00 in	D:24.00 in	Avail Space: 1.36 in		Ht Space: 22.00 in	
ID	UPC	Barcode	Name	Category	HFacings	Orientation	Units
11300	7289000016	 72890 00016 3	HEINEKEN 12/12 BTL	ABOVE PREMIUM	1	Front	6
15416	8066095675	 80660 95675 6	CORONA LIGHT 12/12 BTL	ABOVE PREMIUM	1	Side	4
15403	8066095615	 80660 95615 2	CORONA 12/12 BTL	ABOVE PREMIUM	2	Side	8
44952	3354495042	 33544 95042 5	CORONA PREMIER 12/12 BTL	ABOVE PREMIUM	1	Side	4
10790	7231123021	 72311 23021 6	SOL 12/12 BTL	ABOVE PREMIUM	1	Side	4
1667	1820053218	 18200 53218 4	BUD LIGHT 18/12 CAN	PREMIUM	1	Side 90	4
1307	1820011218	 18200 11218 8	BUD 18/12 CAN	PREMIUM	1	Side 90	4
10329	7199030017	 71990 30017 3	COORS LIGHT 18/12 CAN	PREMIUM	1	Side 90	4
3552	3410057340	 34100 57340 9	LITE 18/12 CAN	PREMIUM	1	Top	12
66288	1820028443	 18200 28443 4	NATURAL ICE 15/12 CAN	ECONOMY	1	Side 90	4