





CVS # 1958 COLD

Address: 55 COLD SPRING RD | City: SYOSSET | State: NY

Chain/StoreNumer: CVS - EAST 1958

Reset Name: 2019 SPRING

Planogram Name: 1958_1_DOOR_COLD

Segment # 1 : 1_5 DEPTH: 24 In WIDTH: 22 In DISTANCE FROM TOP OF BASE SHELF TO BOTTOM OF SHELF:0.00 In

| POS # | FAC | UPC | NAME | CASES | CAPACITY | UNITS HIGH | Category |
|-------|-----|------------|--------------------|-------|----------|------------|---------------|
| 1 | 1 | 7289000020 | HEINEKEN 12/12 CAN | 2.0 | 4 | 1 | ABOVE PREMIUM |
| 2 | 1 | 7289000016 | HEINEKEN 12/12 BTL | 2.0 | 4 | 1 | ABOVE PREMIUM |
| 3 | 1 | 8066095615 | CORONA 12/12 BTL | 2.0 | 4 | 1 | ABOVE PREMIUM |

Segment # 1 : 1_4 DEPTH: 24 In WIDTH: 22 In DISTANCE FROM TOP OF BASE SHELF TO BOTTOM OF SHELF:22.00 In

| POS # | FAC | UPC | NAME | CASES | CAPACITY | UNITS HIGH | Category |
|-------|-----|------------|--------------------------|-------|----------|------------|---------------|
| 1 | 1 | 7289000159 | HEINEKEN LIGHT 12/12 BTL | 1.0 | 2 | 1 | ABOVE PREMIUM |
| 2 | 1 | 8066095675 | CORONA LIGHT 12/12 BTL | 1.0 | 2 | 1 | ABOVE PREMIUM |
| 3 | 1 | 7199000048 | COORS LIGHT 12/12 CAN | 1.5 | 3 | 1 | PREMIUM |

Segment # 1 : 1_3 DEPTH: 24 In WIDTH: 22 In DISTANCE FROM TOP OF BASE SHELF TO BOTTOM OF SHELF:34.00 In

| POS # | FAC | UPC | NAME | CASES | CAPACITY | UNITS HIGH | Category |
|-------|-----|------------|-----------------------|-------|----------|------------|----------|
| 1 | 1 | 1820053047 | BUD LIGHT 12/12 CAN | 2.0 | 4 | 1 | PREMIUM |
| 2 | 1 | 1820053218 | BUD LIGHT 18/12 CAN | 3.0 | 3 | 1 | PREMIUM |
| 3 | 1 | 1820011218 | BUD 18/12 CAN | 3.0 | 3 | 1 | PREMIUM |
| 4 | 1 | 7199030017 | COORS LIGHT 18/12 CAN | 3.0 | 3 | 1 | PREMIUM |

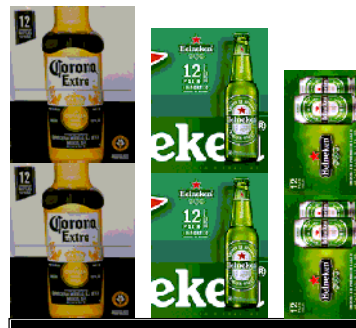
Segment # 1 : 1_2 DEPTH: 24 In WIDTH: 22 In DISTANCE FROM TOP OF BASE SHELF TO BOTTOM OF SHELF:52.00 In

| POS # | FAC | UPC | NAME | CASES | CAPACITY | UNITS HIGH | Category |
|-------|-----|-------------|---------------------------|-------|----------|------------|---------------|
| 1 | 1 | 78615000014 | STELLA ARTOIS 12/11.2 BTL | 1.5 | 3 | 1 | ABOVE PREMIUM |
| 2 | 1 | 8066095715 | MODELO ESPECIAL 12/12 CAN | 1.0 | 2 | 1 | ABOVE PREMIUM |
| 3 | 1 | 1820011047 | BUD 12/12 CAN | 1.5 | 3 | 1 | PREMIUM |

Segment # 1 : 1_1 DEPTH: 24 In WIDTH: 22 In DISTANCE FROM TOP OF BASE SHELF TO BOTTOM OF SHELF:64.00 In

| POS # | FAC | UPC | NAME | CASES | CAPACITY | UNITS HIGH | Category |
|-------|-----|------------|--------------------------|-------|----------|------------|---------------|
| 1 | 1 | 7289000119 | HEINEKEN 1/24 CAN | 0.7 | 8 | 1 | ABOVE PREMIUM |
| 2 | 1 | 8066095643 | CORONA 1/24 CAN | 0.7 | 8 | 1 | ABOVE PREMIUM |
| 3 | 1 | 8066095721 | MODELO ESPECIAL 1/24 CAN | 0.7 | 8 | 1 | ABOVE PREMIUM |
| 4 | 1 | 1820025000 | BUD 1/25 CAN | 0.5 | 8 | 1 | PREMIUM |
| 5 | 1 | 1820025001 | BUD LIGHT 1/25 CAN | 0.5 | 8 | 1 | PREMIUM |
| 6 | 1 | 7199030065 | COORS LIGHT 1/24 CAN | 0.7 | 8 | 1 | PREMIUM |
| 7 | 1 | 7199010071 | COORS BANQUET 1/24 CAN | 0.7 | 8 | 1 | PREMIUM |

REVERSE VIEW (ONLY IF NEEDED)





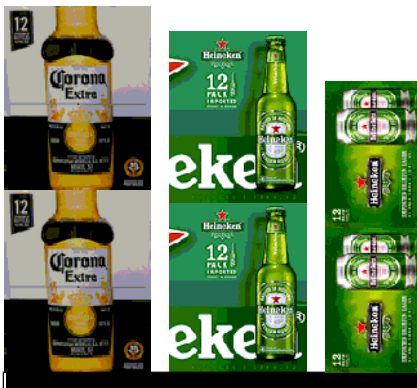
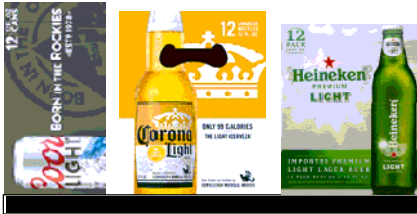
CVS # 1958 COLD

Reset Timing 2019 SPRING

Address: 55 COLD SPRING RD | City: SYOSSET | State: NY

REVERSE VIEW (ONLY IF NEEDED)

Segment:
1 of 1



Segment # 1 : 1_5 0.00 In

| POS | UPC | NAME |
|-----|------------|---------------------|
| 1 | 7289000020 | HEINEKEN 12/ 12 CAN |
| 2 | 7289000016 | HEINEKEN 12/ 12 BTL |
| 3 | 8066095615 | CORONA 12/ 12 BTL |

Segment # 1 : 1_4 22.00 In

| POS | UPC | NAME |
|-----|------------|---------------------------|
| 1 | 7289000159 | HEINEKEN LIGHT 12/ 12 BTL |
| 2 | 8066095675 | CORONA LIGHT 12/ 12 BTL |
| 3 | 7199000048 | COORS LIGHT 12/ 12 CAN |

Segment # 1 : 1_3 34.00 In

| POS | UPC | NAME |
|-----|------------|------------------------|
| 1 | 1820053047 | BUD LIGHT 12/ 12 CAN |
| 2 | 1820053218 | BUD LIGHT 18/ 12 CAN |
| 3 | 1820011218 | BUD 18/ 12 CAN |
| 4 | 7199030017 | COORS LIGHT 18/ 12 CAN |

Segment # 1 : 1_2 52.00 In

| POS | UPC | NAME |
|-----|-------------|----------------------------|
| 1 | 78615000014 | STELLA ARTOIS 12/ 11.2 BTL |
| 2 | 8066095715 | MODELO ESPECIAL 12/ 12 CAN |
| 3 | 1820011047 | BUD 12/ 12 CAN |

Segment # 1 : 1_1 64.00 In

| POS | UPC | NAME |
|-----|------------|---------------------------|
| 1 | 7289000119 | HEINEKEN 1/24 CAN |
| 2 | 8066095643 | CORONA 1/24 CAN |
| 3 | 8066095721 | MODELO ESPECIAL 1/ 24 CAN |
| 4 | 1820025000 | BUD 1/ 25 CAN |
| 5 | 1820025001 | BUD LIGHT 1/25 CAN |
| 6 | 7199030065 | COORS LIGHT 1/ 24 CAN |
| 7 | 7199010071 | COORS BANQUET 1/24 CAN |



CVS # 1958 COLD

Address: 55 COLD SPRING RD | City: SYOSSET | State: NY

Chain/StoreNumer: CVS - EAST 1958

Reset Name: 2019 SPRING

Planogram Name: 1958_1_DOOR_COLD

CVS PHARMA... Store # 1958 H: 6 ft 5.00 in W: 1 ft 10.00 in D: 2 ft # of segments: 1

Name: 1_1 W:22.00 in D:24.00 in Avail Space: 1.84 in Ht Space: 12.00 in

| ID | UPC | Barcode | Name | Category | HFacings | Orientation | Units |
|-------|------------|---|--------------------------|---------------|----------|-------------|-------|
| 11327 | 7289000119 |  72890 00119 1 | HEINEKEN 1/24 CAN | ABOVE PREMIUM | 1 | Front | 8 |
| 15415 | 8066095643 |  80660 95643 5 | CORONA 1/24 CAN | ABOVE PREMIUM | 1 | Front | 8 |
| 15431 | 8066095721 |  80660 95721 0 | MODELO ESPECIAL 1/24 CAN | ABOVE PREMIUM | 1 | Front | 8 |
| 1520 | 1820025000 |  18200 25000 2 | BUD 1/25 CAN | PREMIUM | 1 | Front | 8 |
| 1521 | 1820025001 |  18200 25001 9 | BUD LIGHT 1/25 CAN | PREMIUM | 1 | Front | 8 |
| 10346 | 7199030065 |  71990 30065 4 | COORS LIGHT 1/24 CAN | PREMIUM | 1 | Front | 8 |
| 10243 | 7199010071 |  71990 10071 1 | COORS BANQUET 1/24 CAN | PREMIUM | 1 | Front | 8 |

Name: 1_2 W:22.00 in D:24.00 in Avail Space: 2.12 in Ht Space: 11.00 in

| ID | UPC | Barcode | Name | Category | HFacings | Orientation | Units |
|-------|-------------|---|---------------------------|---------------|----------|-------------|-------|
| 14094 | 78615000014 |  786150 00014 4 | STELLA ARTOIS 12/11.2 BTL | ABOVE PREMIUM | 1 | Front | 3 |
| 15429 | 8066095715 |  80660 95715 9 | MODELO ESPECIAL 12/12 CAN | ABOVE PREMIUM | 1 | Top 90 | 2 |
| 1297 | 1820011047 |  18200 11047 4 | BUD 12/12 CAN | PREMIUM | 1 | Top 90 | 3 |

Name: 1_3 W:22.00 in D:24.00 in Avail Space: 1.85 in Ht Space: 17.00 in

| ID | UPC | Barcode | Name | Category | HFacings | Orientation | Units |
|-------|------------|---|-----------------------|----------|----------|-------------|-------|
| 1659 | 1820053047 |  18200 53047 0 | BUD LIGHT 12/12 CAN | PREMIUM | 1 | Side | 4 |
| 1667 | 1820053218 |  18200 53218 4 | BUD LIGHT 18/12 CAN | PREMIUM | 1 | Top 90 | 3 |
| 1307 | 1820011218 |  18200 11218 8 | BUD 18/12 CAN | PREMIUM | 1 | Top 90 | 3 |
| 10329 | 7199030017 |  71990 30017 3 | COORS LIGHT 18/12 CAN | PREMIUM | 1 | Top 90 | 3 |

Name: 1_4 W:22.00 in D:24.00 in Avail Space: 1.59 in Ht Space: 11.00 in

| ID | UPC | Barcode | Name | Category | HFacings | Orientation | Units |
|----|-----|---------|------|----------|----------|-------------|-------|
|----|-----|---------|------|----------|----------|-------------|-------|



CVS # 1958 COLD

Address: 55 COLD SPRING RD | City: SYOSSET | State: NY

Chain/StoreNumer: CVS - EAST 1958

Reset Name: 2019 SPRING

Planogram Name: 1958_1_DOOR_COLD

| | | | | | | | |
|-------|------------|--|--------------------------|---------------|---|--------|---|
| 11342 | 7289000159 | | HEINEKEN LIGHT 12/12 BTL | ABOVE PREMIUM | 1 | Side | 2 |
| 15416 | 8066095675 | | CORONA LIGHT 12/12 BTL | ABOVE PREMIUM | 1 | Side | 2 |
| 10164 | 7199000048 | | COORS LIGHT 12/12 CAN | PREMIUM | 1 | Top 90 | 3 |

Name: 1_5 W:22.00 in D:24.00 in Avail Space: 1.96 in Ht Space: 21.00 in

| ID | UPC | Barcode | Name | Category | HFacings | Orientation | Units |
|-------|------------|---------|--------------------|---------------|----------|-------------|-------|
| 11301 | 7289000020 | | HEINEKEN 12/12 CAN | ABOVE PREMIUM | 1 | Side | 4 |
| 11300 | 7289000016 | | HEINEKEN 12/12 BTL | ABOVE PREMIUM | 1 | Side | 4 |
| 15403 | 8066095615 | | CORONA 12/12 BTL | ABOVE PREMIUM | 1 | Side | 4 |