





H: 7 ft 6.00 in | W: 16 ft | D: 2 ft | # of segments: 4

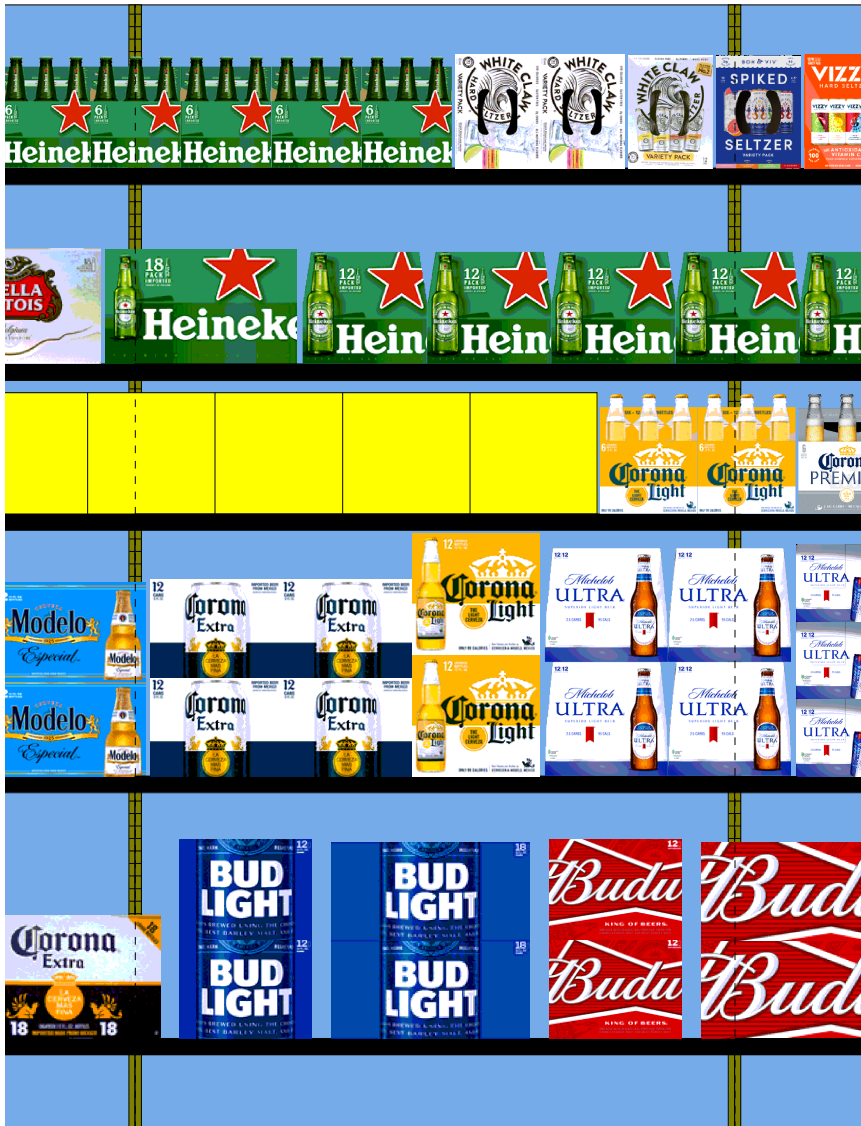
| Name: 5 | W: 48.00 in | D: 18.00 in | Avail Space: -0.37 in | Ht Space: 19.68 in | |
|------------|-------------|-------------------------------|-----------------------|--------------------|-------|
| UPC | WIC | Name | HFacings | Orientation | Units |
| 8066095711 | 128045 | MODELO ESPECIAL CANS 12OZ ... | 1 | Front | 6 |
| 8066095408 | 124097 | CORONITA EXTRA 7OZ 24S | 2 | Front | 8 |
| 8066095680 | 127315 | CORONA EXTRA 12OZ 18S | 1 | Front | 2 |

| Name: 4 | W: 48.00 in | D: 18.00 in | Avail Space: -0.36 in | Ht Space: 19.68 in | |
|------------|-------------|--------------------------------|-----------------------|--------------------|-------|
| UPC | WIC | Name | HFacings | Orientation | Units |
| 8066095715 | 115154 | MODELO ESPECIAL CAN 12OZ 12... | 3 | Side 90 | 12 |
| 8066095757 | 122847 | MODELO ESPECIAL BTL 12OZ 12S | 2 | Front | 8 |

| Name: 3 | W: 48.00 in | D: 18.00 in | Avail Space: 14.42 in | Ht Space: 10.68 in | |
|------------|-------------|-----------------------------|-----------------------|--------------------|-------|
| UPC | WIC | Name | HFacings | Orientation | Units |
| 8066095765 | 122918 | MODELO ESPECIAL BTL 12OZ 6S | 2 | Front | 6 |
| 8066095605 | 124690 | CORONA NRB EXTRA 12 OZ 6PK | 2 | Front | 6 |

| Name: 2 | W: 48.00 in | D: 18.00 in | Avail Space: 3.35 in | Ht Space: 14.36 in | |
|-------------|-------------|---------------------------|----------------------|--------------------|-------|
| UPC | WIC | Name | HFacings | Orientation | Units |
| 7861500014 | 117963 | STELLA ARTOIS 11.2OZ 12PK | 3 | Front | 6 |
| 78615000149 | 998627 | STELLA ARTOIS 11Z 18B | 1 | Front | 2 |

| Name: 1 | W: 48.00 in | D: 18.00 in | Avail Space: 11.10 in | Ht Space: 13.07 in | |
|-------------|-------------|----------------------------|-----------------------|--------------------|-------|
| UPC | WIC | Name | HFacings | Orientation | Units |
| 78615000001 | 114758 | STELLA ARTOIS 11.2OZ 6PK B | 5 | Front | 20 |



H: 7 ft 6.00 in | W: 16 ft | D: 2 ft | # of segments: 4

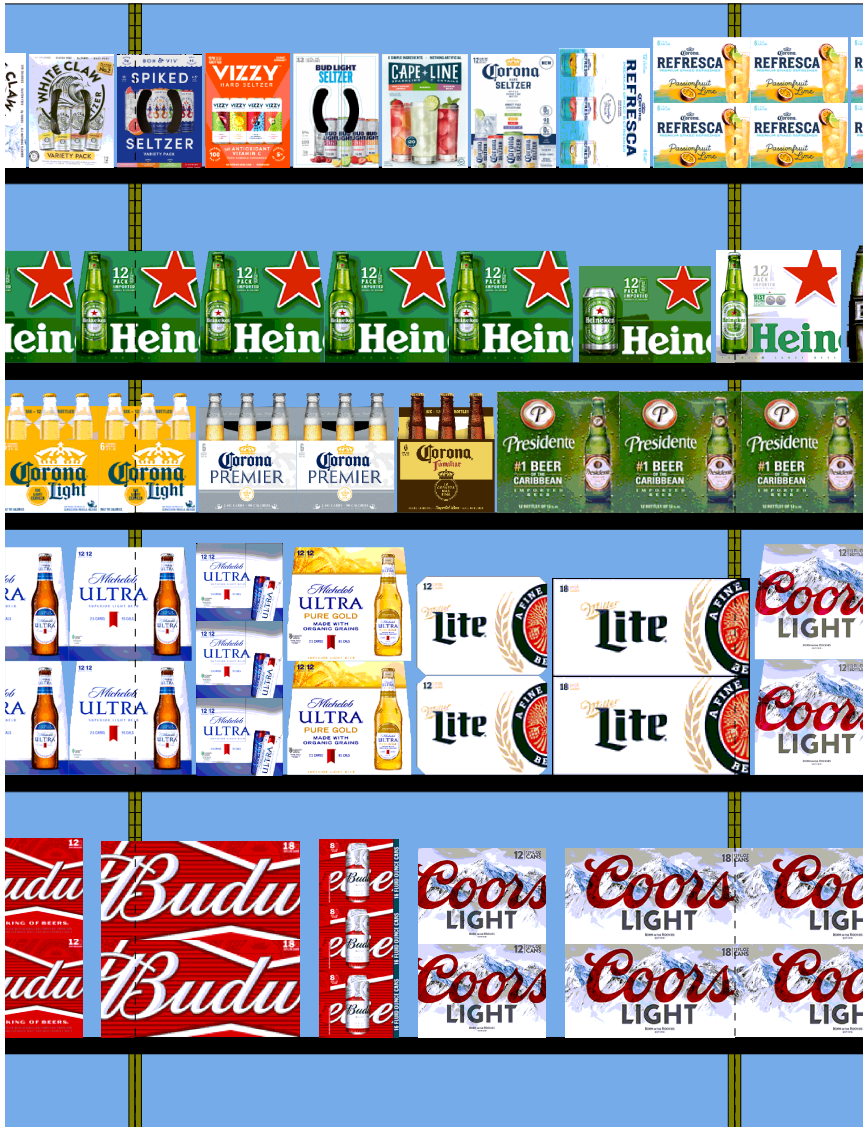
| Name: 10 | W:48.00 in | D:18.00 in | Avail Space: 11.03 in | Ht Space: 19.68 in | |
|------------|------------|-------------------------|-----------------------|--------------------|-------|
| UPC | WIC | Name | HFacings | Orientation | Units |
| 1820053047 | 191305 | BUD LIGHT CAN 12OZ 12S | 1 | Front | 6 |
| 1820053218 | 108499 | BUD LIGHT 12OZ CAN 18PK | 1 | Front | 2 |
| 1820011047 | 191301 | BUD CAN 12OZ 12S | 1 | Front | 6 |

| Name: 9 | W:48.00 in | D:18.00 in | Avail Space: -2.92 in | Ht Space: 19.68 in | |
|------------|------------|--------------------------------|-----------------------|--------------------|-------|
| UPC | WIC | Name | HFacings | Orientation | Units |
| 8066095695 | 123722 | CORONA EXTRA CAN 12OZ 12PK | 2 | Front | 12 |
| 8066095675 | 124103 | CORONA NRB LIGHT 12 OZ 12PK | 1 | Front | 4 |
| 1820005990 | 113884 | MICHELOB ULTRA LNNR 12OZ 12... | 2 | Front | 8 |

| Name: 8 | W:48.00 in | D:18.00 in | Avail Space: -18.68 in | Ht Space: 10.68 in | |
|------------|------------|----------------------------|------------------------|--------------------|-------|
| UPC | WIC | Name | HFacings | Orientation | Units |
| 8066095615 | 103871 | Corona Extra 12/12B | 5 | Front | 10 |
| 8066095625 | 104828 | CORONA NRB LIGHT 12 OZ 6PK | 2 | Front | 6 |

| Name: 7 | W:48.00 in | D:18.00 in | Avail Space: 32.70 in | Ht Space: 14.36 in | |
|------------|------------|--------------------|-----------------------|--------------------|-------|
| UPC | WIC | Name | HFacings | Orientation | Units |
| 7289000152 | 117273 | HEINEKEN 12OZ 18PK | 1 | Front | 2 |

| Name: 6 | W:48.00 in | D:18.00 in | Avail Space: -8.40 in | Ht Space: 13.07 in | |
|-------------|------------|---------------------------------------|-----------------------|--------------------|-------|
| UPC | WIC | Name | HFacings | Orientation | Units |
| 7289000011 | 191700 | HEINEKEN NRB 12 OZ 6PK | 5 | Front | 20 |
| 63598554890 | 998463 | WHITE CLAW VRTY PK HRDSTZR... | 2 | Top 90 | 6 |
| 63598580006 | 802810 | White Claw Variety Pk2 HrdSeltzr 1... | 1 | Top 90 | 3 |



H: 7 ft 6.00 in | W: 16 ft | D: 2 ft | # of segments: 4

| Name: 15 | | W:48.00 in | D:18.00 in | Avail Space: 15.69 in | | Ht Space: 19.68 in |
|------------|--------|---------------------------|------------|-----------------------|-------------|--------------------|
| UPC | WIC | Name | | HFacings | Orientation | Units |
| 1820011218 | 108476 | BUDWEISER CAN 12OZ 18PK | | 1 | Front | 2 |
| 1820008981 | 116711 | BUDWEISER CANS 16OZ 8PK | | 1 | Side | 3 |
| 7199000048 | 191504 | COORS LIGHT 12OZ CAN 12PK | | 1 | Front | 6 |

| Name: 14 | | W:48.00 in | D:18.00 in | Avail Space: 4.98 in | | Ht Space: 19.68 in |
|------------|--------|--------------------------------|------------|----------------------|-------------|--------------------|
| UPC | WIC | Name | | HFacings | Orientation | Units |
| 1820006991 | 115070 | MICHELOB ULTRA CANS 12OZ 12... | | 1 | Side | 3 |
| 1820020083 | 754819 | MICHELOB ULTRA PURE GLD 12... | | 1 | Front | 4 |
| 3410057636 | 191851 | MILLER LT 12OZ CAN 12PK | | 1 | Front | 6 |
| 3410057340 | 108526 | MILLER LT 12OZ CAN 18PK | | 1 | Front | 6 |

| Name: 13 | | W:48.00 in | D:18.00 in | Avail Space: 24.48 in | | Ht Space: 10.68 in |
|------------|--------|----------------------------|------------|-----------------------|-------------|--------------------|
| UPC | WIC | Name | | HFacings | Orientation | Units |
| 3354495041 | 881585 | CORONA PREMIER 12Z 6PK BTL | | 2 | Front | 6 |
| 3354495051 | 740213 | CORONA FAMILIAR 12OZ6B | | 1 | Front | 3 |

| Name: 12 | | W:48.00 in | D:18.00 in | Avail Space: -32.15 in | | Ht Space: 14.36 in |
|------------|--------|-------------------------|------------|------------------------|-------------|--------------------|
| UPC | WIC | Name | | HFacings | Orientation | Units |
| 7289000016 | 191702 | HEINEKEN NRB 12 OZ 12PK | | 7 | Front | 14 |
| 7289000020 | 191101 | HEINEKEN 12OZ CAN 12PK | | 1 | Front | 3 |

| Name: 11 | | W:48.00 in | D:18.00 in | Avail Space: 6.94 in | | Ht Space: 13.07 in |
|-------------|--------|--------------------------------------|------------|----------------------|-------------|--------------------|
| UPC | WIC | Name | | HFacings | Orientation | Units |
| 85389700227 | 994821 | BON&VIV SPIKED SLTZR VTY PK... | | 1 | Top 90 | 3 |
| 3410001232 | 838127 | Vizzy Seltzer Variety Pack 12/12C SC | | 1 | Top 90 | 3 |
| 1820020208 | 602707 | BUD LIGHT SELTZER VRTY 12OZ... | | 1 | Top 90 | 3 |
| 3410051681 | 574463 | CAPE LINE 12Z 12PK CAN | | 1 | Top 90 | 3 |
| 3354400043 | 604357 | CORONA SELTZER VRTY PK 12O... | | 1 | Top 90 | 3 |
| 3354400013 | 574485 | CORONA RFRSH VAR12Z12PK CN | | 1 | Top 90 | 3 |



| H: 7 ft 6.00 in W: 16 ft D: 2 ft # of segments: 4 | | | | | | |
|---|--------|----------------------------------|------------|------------------------|-------|--------------------|
| Name: 20 | | W:48.00 in | D:18.00 in | Avail Space: -12.00 in | | Ht Space: 19.68 in |
| UPC | WIC | Name | HFacings | Orientation | Units | |
| 7199030017 | 109148 | COORS LIGHT CANS 12OZ 18PK | 2 | Front | 4 | |
| 7199030078 | 115148 | COORS LIGHT LNNR 12OZ 18PK | 2 | Front | 8 | |
| Name: 19 | | W:48.00 in | D:18.00 in | Avail Space: 2.00 in | | Ht Space: 19.68 in |
| UPC | WIC | Name | HFacings | Orientation | Units | |
| 7199030069 | 112810 | COORS LIGHT L/N 12OZ 12S | 2 | Front | 8 | |
| 1820020077 | 218721 | NATURAL LIGHT 12OZ 15C | 2 | Front | 12 | |
| Name: 18 | | W:48.00 in | D:18.00 in | Avail Space: -18.60 in | | Ht Space: 10.68 in |
| UPC | WIC | Name | HFacings | Orientation | Units | |
| 71905700156 | 111218 | PRESIDENTE NRB 12OZ 12PK | 4 | Front | 8 | |
| 71905700131 | 107615 | PRESIDENTE 12OZ 6S | 1 | Front | 3 | |
| 3410001509 | 113325 | MILLER HIGH LIFE NRB L/N 12OZ... | 2 | Front | 4 | |
| Name: 17 | | W:48.00 in | D:18.00 in | Avail Space: -0.99 in | | Ht Space: 14.36 in |
| UPC | WIC | Name | HFacings | Orientation | Units | |
| 7289000159 | 117363 | HEINEKEN NRB LIGHT 12OZ 12PK | 1 | Front | 2 | |
| 8248812300 | 104891 | BECKS NRB 12 OZ 12PK | 4 | Front | 8 | |
| Name: 16 | | W:48.00 in | D:18.00 in | Avail Space: -5.63 in | | Ht Space: 13.07 in |
| UPC | WIC | Name | HFacings | Orientation | Units | |
| 3354495063 | 705292 | CORONA RFRSCA PSSN12Z6PKC | 2 | Front | 12 | |
| 3354495067 | 705134 | CORONA RFRSCA LM 12Z6PK CN | 2 | Front | 12 | |
| 7289000621 | 113340 | HEINEKEN 0.0 12OZ 6B | 1 | Front | 4 | |
| 7199009511 | 109725 | BLUE MOON NRB BLGN WHT AL... | 2 | Front | 2 | |