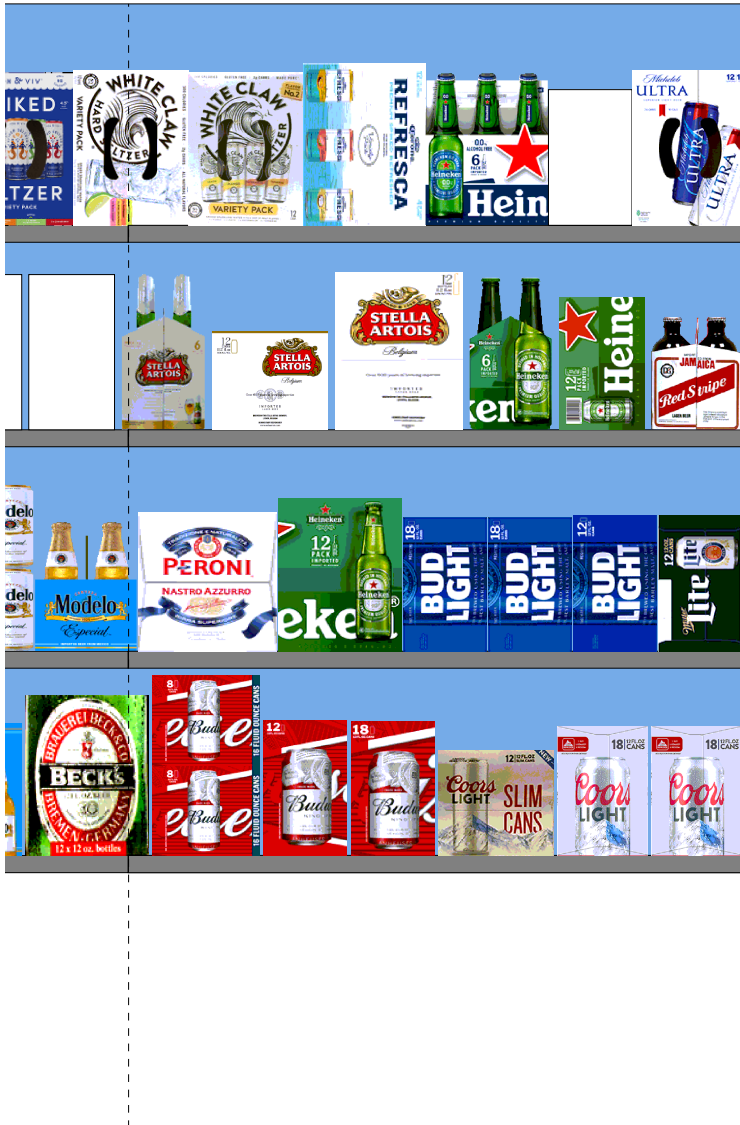






| H: 5 ft 6.00 in W: 6 ft D: 1 ft 6.00 in # of segments: 2 | | | | | |
|--|--------|---------------------------------|------------|-----------------------|--------------------|
| Name: 4 | | W:36.00 in | D:24.00 in | Avail Space: -0.15 in | Ht Space: 11.00 in |
| UPC | WIC | Name | HFacings | Orientation | Units |
| 3410051681 | 574463 | CAPE LINE 12Z 12PK CAN | 1 | Top 90 | 3 |
| 8066095715 | 115154 | MODELO ESPECIAL CAN 12OZ 12... | 1 | Side | 2 |
| 8066095711 | 128045 | MODELO ESPECIAL CANS 12OZ ... | 1 | Side | 1 |
| 8066095757 | 122847 | MODELO ESPECIAL BTL 12OZ 12S | 1 | Front | 2 |
| 8248812300 | 104891 | BECKS NRB 12 OZ 12PK | 1 | Side | 2 |
| Name: 3 | | W:36.00 in | D:24.00 in | Avail Space: 0.05 in | Ht Space: 12.00 in |
| UPC | WIC | Name | HFacings | Orientation | Units |
| 1820020217 | 705791 | BUD LT SLTZ STRW 12Z12PK CN | 1 | Top 90 | 3 |
| 8066095605 | 124690 | CORONA NRB EXTRA 12 OZ 6PK | 1 | Side | 3 |
| 8066095615 | 103871 | Corona Extra 12/12B | 1 | Side | 2 |
| 8066095695 | 123722 | CORONA EXTRA CAN 12OZ 12PK | 1 | Side | 2 |
| 8066095755 | 102276 | MODELO ESPECIAL 12OZ CAN 6PK | 1 | Side | 6 |
| 8066095765 | 122918 | MODELO ESPECIAL BTL 12OZ 6S | 1 | Side | 2 |
| Name: 2 | | W:36.00 in | D:24.00 in | Avail Space: 2.89 in | Ht Space: 11.00 in |
| UPC | WIC | Name | HFacings | Orientation | Units |
| 64286090024 | 365597 | FOUNDERS ALL DAY IPA 12OZ 15S | 1 | Side 90 | 2 |
| 7199009511 | 109725 | BLUE MOON NRB BLGN WHT AL... | 1 | Side | 1 |
| 8769230050 | 111567 | SAMUEL ADAMS SEASONAL 12O... | 1 | Side | 3 |
| 86273700002 | 953044 | MONTAUK DRIFTWOOD ALE 12O... | 1 | Side | 6 |
| 68174500208 | 203873 | BLUE PT SHR THNG 12Z6PK CN | 1 | Side | 3 |
| 68174500215 | 204016 | BLUE PT THE IPA 12Z6PK CAN | 1 | Side | 3 |
| Name: 1 | | W:36.00 in | D:24.00 in | Avail Space: 2.83 in | Ht Space: 13.00 in |
| UPC | WIC | Name | HFacings | Orientation | Units |
| 3061300001 | 133516 | BROOKLYN LAGER 12OZ 6S | 1 | Side | 3 |
| 8834510005 | 109039 | NEWCASTLE NRB BROWN ALE 1... | 1 | Side | 3 |
| 4257204006 | 366224 | SCHOFFRHRFR GRPFRT HEFEWZ... | 1 | Side | 3 |
| 8769200660 | 881039 | ANGRY ORCHRD ROSE 12Z6PK ... | 1 | Side | 3 |
| 1820020154 | 419950 | STELLA ARTOIS SPRITZER 12OZ ... | 1 | Front 90 | 3 |
| 85389700227 | 994821 | BON&VIV SPIKED SLTZR VTY PK... | 1 | Top 90 | 3 |



H: 5 ft 6.00 in | W: 6 ft | D: 1 ft 6.00 in | # of segments: 2

| Name: 8 | | W:36.00 in | D:24.00 in | Avail Space: 2.66 in | | Ht Space: 11.00 in |
|------------|--------|----------------------------|------------|----------------------|-------|--------------------|
| UPC | WIC | Name | HFacings | Orientation | Units | |
| 1820008981 | 116711 | BUDWEISER CANS 16OZ 8PK | 1 | Side | 4 | |
| 1820011047 | 191301 | BUD CAN 12OZ 12S | 1 | Side | 2 | |
| 1820011218 | 108476 | BUDWEISER CAN 12OZ 18PK | 1 | Side | 1 | |
| 7199070028 | 656744 | COORS LIGHT SLIM 12OZ 12C | 1 | Side | 2 | |
| 7199030017 | 109148 | COORS LIGHT CANS 12OZ 18PK | 2 | Side | 2 | |

| Name: 7 | | W:36.00 in | D:24.00 in | Avail Space: 1.14 in | | Ht Space: 12.00 in |
|-------------|--------|-------------------------------|------------|----------------------|-------|--------------------|
| UPC | WIC | Name | HFacings | Orientation | Units | |
| 18195400004 | 137996 | PERONI NASTRO AZZURRO 11.2... | 1 | Side | 2 | |
| 7289000016 | 191702 | HEINEKEN NRB 12 OZ 12PK | 1 | Side | 2 | |
| 1820053218 | 108499 | BUD LIGHT 12OZ CAN 18PK | 2 | Side | 2 | |
| 1820053047 | 191305 | BUD LIGHT CAN 12OZ 12S | 1 | Side | 2 | |
| 3410057636 | 191851 | MILLER LT 12OZ CAN 12PK | 1 | Side | 2 | |

| Name: 6 | | W:36.00 in | D:24.00 in | Avail Space: 1.69 in | | Ht Space: 11.00 in |
|-------------|--------|-----------------------------|------------|----------------------|-------|--------------------|
| UPC | WIC | Name | HFacings | Orientation | Units | |
| 78615000001 | 114758 | STELLA ARTOIS 11.2OZ 6PK B | 1 | Side | 3 | |
| 78615000016 | 953067 | STELLA ARTOIS 11OZ 12PK CAN | 1 | Side | 2 | |
| 78615000014 | 117963 | STELLA ARTOIS 11.2OZ 12PK | 1 | Side | 2 | |
| 7289000011 | 191700 | HEINEKEN NRB 12 OZ 6PK | 1 | Side | 3 | |
| 7289000020 | 191101 | HEINEKEN 12OZ CAN 12PK | 1 | Side | 2 | |
| 8382056793 | 100495 | RED STRIPE NRB 12OZ 6PK | 1 | Side | 2 | |

| Name: 5 | | W:36.00 in | D:24.00 in | Avail Space: -3.69 in | | Ht Space: 13.00 in |
|-------------|--------|--------------------------------|------------|-----------------------|-------|--------------------|
| UPC | WIC | Name | HFacings | Orientation | Units | |
| 63598554890 | 998463 | WHITE CLAW VRTY PK HRDSTZR... | 1 | Top 90 | 3 | |
| 63598580006 | 802810 | WHITE CLAW NO2 VARIETY 12OZ... | 1 | Top 90 | 3 | |
| 3354400013 | 574485 | CORONA RFRSH VAR12Z12PK CN | 1 | Top 90 | 3 | |
| 7289000621 | 113340 | HEINEKEN 0.0 12OZ 6B | 1 | Front | 4 | |
| 85443600814 | 597333 | FLOYDS SPIKED LEMONADE 12O... | 1 | Side | 1 | |
| 1820006991 | 115070 | MICHELOB ULTRA CANS 12OZ 12... | 1 | Top 90 | 3 | |