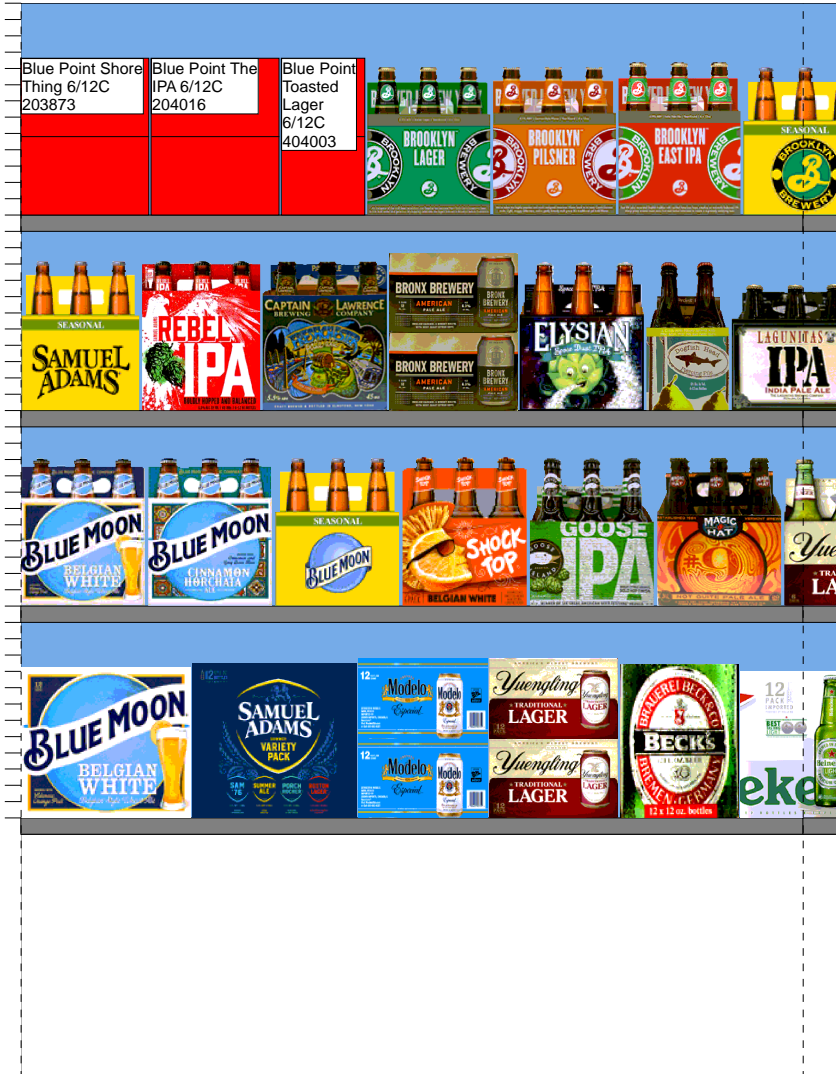




# WALGREENS STORE # 14494

# SPRING 2019



H: 5 ft 6.00 in | W: 12 ft | D: 1 ft 6.00 in | # of segments: 3

| Name: 4    |        | W:48.00 in                         | D:24.00 in | Avail Space: -2.61 in |       | Ht Space: 12.00 in |
|------------|--------|------------------------------------|------------|-----------------------|-------|--------------------|
| UPC        | WIC    | Name                               | HFacings   | Orientation           | Units |                    |
| 7199009516 | 119536 | Blue Moon Belgian White Ale 12/12B | 1          | Front                 | 3     |                    |
| 8769210014 | 109547 | Samuel Adams Boston Lgr 12/12B     | 1          | Front                 | 3     |                    |
| 8066095715 | 115154 | Modelo 12/12C                      | 1          | Side 90               | 4     |                    |
| 8992427898 | 113892 | Yuengling Traditional Lager 12/12C | 1          | Side 90               | 4     |                    |
| 8248812300 | 104891 | Becks 12/12B                       | 1          | Side                  | 2     |                    |
| 7289000159 | 117363 | Heineken Premium Light 12/12B      | 1          | Side                  | 2     |                    |

| Name: 3     |        | W:48.00 in                             | D:24.00 in | Avail Space: 2.25 in |       | Ht Space: 11.00 in |
|-------------|--------|--|------------|----------------------|-------|--------------------|
| UPC         | WIC    | Name                                   | HFacings   | Orientation          | Units |                    |
| 7199009511  | 109725 | Blue Moon Belgian White Ale 6/12B      | 1          | Front                | 4     |                    |
| 7199009584  | 917292 | Samuel Adams Cinnamon Horchata Ale ... | 1          | Front                | 4     |                    |
| 7199009532  | 109684 | Blue Moon Seasonal 6/12B               | 1          | Front                | 4     |                    |
| 1820013986  | 124863 | Shock Top Belgian White Ale 6/12B      | 1          | Front                | 4     |                    |
| 73692011132 | 111428 | Goose Island India Pale Ale 6/12B      | 1          | Front                | 4     |                    |
| 79837312602 | 129696 | Magic Hat #9 6/12B                     | 1          | Front                | 4     |                    |

| Name: 2     |        | W:48.00 in                      | D:24.00 in | Avail Space: -2.75 in |       | Ht Space: 11.00 in |
|-------------|--------|---------------------------------|------------|-----------------------|-------|--------------------|
| UPC         | WIC    | Name                            | HFacings   | Orientation           | Units |                    |
| 8769230050  | 111567 | Samuel Adams Seasonal 6/12B     | 1          | Front                 | 4     |                    |
| 8769200127  | 353769 | Samuel Adams Rebel IPA 6/12B    | 1          | Front                 | 4     |                    |
| 81760601000 | 172441 | Captain Lawrence Pale Ale 6/12B | 1          | Front                 | 4     |                    |
| 85663200423 | 935224 | Bronx American Pale Ale 6/12C   | 1          | Front                 | 8     |                    |
| 81790400083 | 904487 | Elysian Space Dust IPA 6/12B    | 1          | Front                 | 4     |                    |
| 63848900110 | 133394 | Dogfish Head Seasonal 4/12B     | 1          | Front                 | 4     |                    |
| 72383000009 | 129413 | Lagunitas IPA 6/12B             | 1          | Front                 | 4     |                    |

| Name: 1     |        | W:48.00 in                         | D:24.00 in | Avail Space: 4.57 in |       | Ht Space: 13.00 in |
|-------------|--------|------------------------------------|------------|----------------------|-------|--------------------|
| UPC         | WIC    | Name                               | HFacings   | Orientation          | Units |                    |
| 68174500208 | 203873 | Blue Point Shore Thing 6/12C       | 1          | Front                | 8     |                    |
| 68174500215 | 204016 | Blue Point The IPA 6/12C           | 1          | Front                | 8     |                    |
| 68174500133 | 404003 | Blue Point Toasted Lager 6/12C     | 1          | Side                 | 6     |                    |
| 3061300001  | 133516 | Brooklyn Lager 6/12B               | 1          | Front                | 4     |                    |
| 3061300016  | 208786 | Brooklyn Pilsner 6/12B             | 1          | Front                | 4     |                    |
| 3061300019  | 185424 | Brooklyn East India Pale Ale 6/12B | 1          | Front                | 4     |                    |

05029-00194-12-222-24

WALGREENS STORE # 14494

SPRING 2019



H: 5 ft 6.00 in | W: 12 ft | D: 1 ft 6.00 in | # of segments: 3

| Name: 8    |        | W: 48.00 in            | D: 24.00 in | Avail Space: 6.73 in |       | Ht Space: 12.00 in |
|------------|--------|------------------------|-------------|----------------------|-------|--------------------|
| UPC        | WIC    | Name                   | HFacings    | Orientation          | Units |                    |
| 3354495042 | 828602 | Corona Premier 12/12B  | 1           | Side                 | 2     |                    |
| 8066095675 | 124103 | Corona Light 12/12B    | 1           | Front                | 3     |                    |
| 3354495053 | 402031 | Corona Familiar 12/12B | 1           | Side                 | 2     |                    |
| 1820053218 | 108499 | Bud Light 18/12C       | 1           | Top                  | 6     |                    |

| Name: 7     |        | W: 48.00 in                       | D: 24.00 in | Avail Space: 0.16 in |       | Ht Space: 11.00 in |
|-------------|--------|-----------------------------------|-------------|----------------------|-------|--------------------|
| UPC         | WIC    | Name                              | HFacings    | Orientation          | Units |                    |
| 8992427891  | 113278 | Yuengling Traditional Lager 6/12B | 1           | Front                | 4     |                    |
| 8066095615  | 103871 | Corona Extra 12/12B               | 1           | Front                | 3     |                    |
| 8066095695  | 123722 | Corona Extra 12/12C               | 1           | Side 90              | 4     |                    |
| 7231123021  | 112872 | Sol 12/12B                        | 1           | Side                 | 2     |                    |
| 7289000016  | 191702 | Heineken 12/12B                   | 1           | Side                 | 2     |                    |
| 78615000014 | 117963 | Stella Artois 12/11B              | 1           | Side                 | 2     |                    |

| Name: 6    |        | W: 48.00 in                  | D: 24.00 in | Avail Space: 4.09 in |       | Ht Space: 11.00 in |
|------------|--------|------------------------------|-------------|----------------------|-------|--------------------|
| UPC        | WIC    | Name                         | HFacings    | Orientation          | Units |                    |
| 8066095625 | 104828 | Corona Light 6/12B           | 1           | Front                | 4     |                    |
| 8066095605 | 124690 | Corona Extra 6/12B           | 1           | Front                | 4     |                    |
| 8066095765 | 122918 | Modelo 6/12B                 | 1           | Front                | 4     |                    |
| 7289000621 | 113340 | Heineken 0.0 6/12B           | 1           | Side                 | 3     |                    |
| 7289000158 | 117362 | Heineken Premium Light 6/12B | 1           | Front                | 4     |                    |
| 7289000011 | 191700 | Heineken 6/12B               | 1           | Front                | 4     |                    |

| Name: 5     |        | W: 48.00 in                         | D: 24.00 in | Avail Space: -0.30 in |       | Ht Space: 13.00 in |
|-------------|--------|-------------------------------------|-------------|-----------------------|-------|--------------------|
| UPC         | WIC    | Name                                | HFacings    | Orientation           | Units |                    |
| 3061300053  | 185425 | Brooklyn Seasonal 6/12B             | 1           | Front                 | 4     |                    |
| 8378322822  | 129427 | Sierra Nevada Seasonal 6/12B        | 1           | Front                 | 4     |                    |
| 8378337533  | 984714 | Sierra Nevada SideCar Orange IPA... | 1           | Front                 | 4     |                    |
| 18195400002 | 124972 | Peroni Nastro Azzuro 6/12B          | 1           | Front                 | 4     |                    |
| 7289000083  | 112303 | Heineken 4/16C                      | 1           | Front                 | 4     |                    |
| 8834510005  | 109039 | Newcastle Brown Ale 6/12B           | 1           | Front                 | 4     |                    |
| 8769275102  | 179496 | Twisted Tea Half & Half 6/12B       | 1           | Side                  | 3     |                    |

05029-00194-12-222-24

# WALGREENS STORE # 14494

# SPRING 2019



H: 5 ft 6.00 in | W: 12 ft | D: 1 ft 6.00 in | # of segments: 3



| Name: 12   | W:48.00 in | D:24.00 in         | Avail Space: -1.79 in |             | Ht Space: 12.00 in |
|------------|------------|--------------------|-----------------------|-------------|--------------------|
| UPC        | WIC        | Name               | HFacings              | Orientation | Units              |
| 1820053047 | 191305     | Bud Light 12/12C   | 1                     | Top         | 6                  |
| 1820011218 | 108476     | Budweiser 18/12C   | 1                     | Side 90     | 2                  |
| 1820011047 | 191301     | Budweiser 12/12C   | 1                     | Side 90     | 4                  |
| 3410057340 | 108526     | Miller Lite 18/12C | 1                     | Side 90     | 2                  |
| 3410057636 | 191851     | Miller Lite 12/12C | 1                     | Side 90     | 4                  |
| 7199030017 | 109148     | Coors Light 18/12C | 1                     | Side 90     | 2                  |

| Name: 11   | W:48.00 in | D:24.00 in                      | Avail Space: 0.66 in |             | Ht Space: 11.00 in |
|------------|------------|---------------------------------|----------------------|-------------|--------------------|
| UPC        | WIC        | Name                            | HFacings             | Orientation | Units              |
| 1820020083 | 754819     | Michelob Ultra Pure Gold 12/12B | 1                    | Side        | 2                  |
| 1820006991 | 115070     | Michelob Ultra 12/12C SC        | 1                    | Top 90      | 3                  |
| 1820018993 | 151411     | Bud Light Platinum 6/12B        | 1                    | Front       | 4                  |
| 1820000769 | 104255     | Bud Light 12/12B                | 1                    | Side        | 2                  |
| 7199000048 | 191504     | Coors Light 12/12C              | 1                    | Side 90     | 4                  |
| 7143934450 | 107111     | Rolling Rock 12/12C             | 1                    | Top         | 6                  |

| Name: 10    | W:48.00 in | D:24.00 in                            | Avail Space: 1.14 in |             | Ht Space: 11.00 in |
|-------------|------------|---------------------------------------|----------------------|-------------|--------------------|
| UPC         | WIC        | Name                                  | HFacings             | Orientation | Units              |
| 78615000001 | 114758     | Stella Artois 6/11B                   | 1                    | Front       | 4                  |
| 85389700227 | 994821     | Bon & Viv SS Variety Pack 12/12C ...  | 1                    | Top 90      | 3                  |
| 63598554890 | 998463     | White Claw Variety Pk HrdSeltzer 1... | 1                    | Top 90      | 3                  |
| 1820005989  | 113883     | Michelob Ultra 6/12B                  | 1                    | Front       | 4                  |
| 1820000833  | 104565     | Bud Light 6/12B                       | 1                    | Front       | 4                  |
| 2210000170  | 192401     | Pabst 12/12C                          | 1                    | Top         | 6                  |

| Name: 9    | W:48.00 in | D:24.00 in                      | Avail Space: -1.59 in |             | Ht Space: 13.00 in |
|------------|------------|---------------------------------|-----------------------|-------------|--------------------|
| UPC        | WIC        | Name                            | HFacings              | Orientation | Units              |
| 1820024001 | 914767     | Stella Artois Cidre 6/12B       | 1                     | Front       | 4                  |
| 8769200660 | 881039     | Angry Orchard Rose 6/12B        | 1                     | Front       | 4                  |
| 8769282102 | 112191     | Angry Orchard Crisp Apple 6/12B | 1                     | Front       | 6                  |
| 8769200149 | 354221     | Angry Orchard Green Apple 6/12B | 1                     | Front       | 4                  |
| 8769200310 | 951238     | Angry Orchard Stone Dry 6/12B   | 1                     | Front       | 4                  |
| 3410001505 | 100265     | Miller High Life 6/12B          | 1                     | Front       | 4                  |

05029-00194-12-222-24