





H: 6 ft 5.25 in | W: 8 ft | D: 2 ft | # of segments: 2

Name: 5	W:48.00 in	D:14.00 in	Avail Space: -3.29 in		Ht Space: 19.68 in
UPC	WIC	Name	HFacings	Orientation	Units
72383010009	51429	Lagunitas IPA 12/12B	1	Side	2
3061301136	88184	Brooklyn East India Pale Ale 12/12C	1	Side 90	4
8066095695	76448	Corona Extra 12/12C	1	Side 90	4
8066095615	32314	Corona Extra 12/12B	1	Side	2
8066095711	79191	Modelo 18/12C	1	Side 90	4
8066095757	9960	Modelo 12/12B	1	Front	2

Name: 4	W:48.00 in	D:14.00 in	Avail Space: 3.66 in		Ht Space: 11.36 in
UPC	WIC	Name	HFacings	Orientation	Units
72383000009	48153	Lagunitas IPA 6/12B	1	Side	2
88715100094	101525	Coney Island Mermaid Pilsner 6/12B	1	Side	2
3061300019	45026	Brooklyn East India Pale Ale 6/12B	1	Side	2
73692011132	44804	Goose Island India Pale Ale 6/12B	1	Side	2
8066095715	47273	Modelo 12/12C	1	Side 90	2
7289000020	32294	Heineken 12/12C	1	Side 90	2
1820053047	10401	Bud Light 12/12C	1	Side 90	2

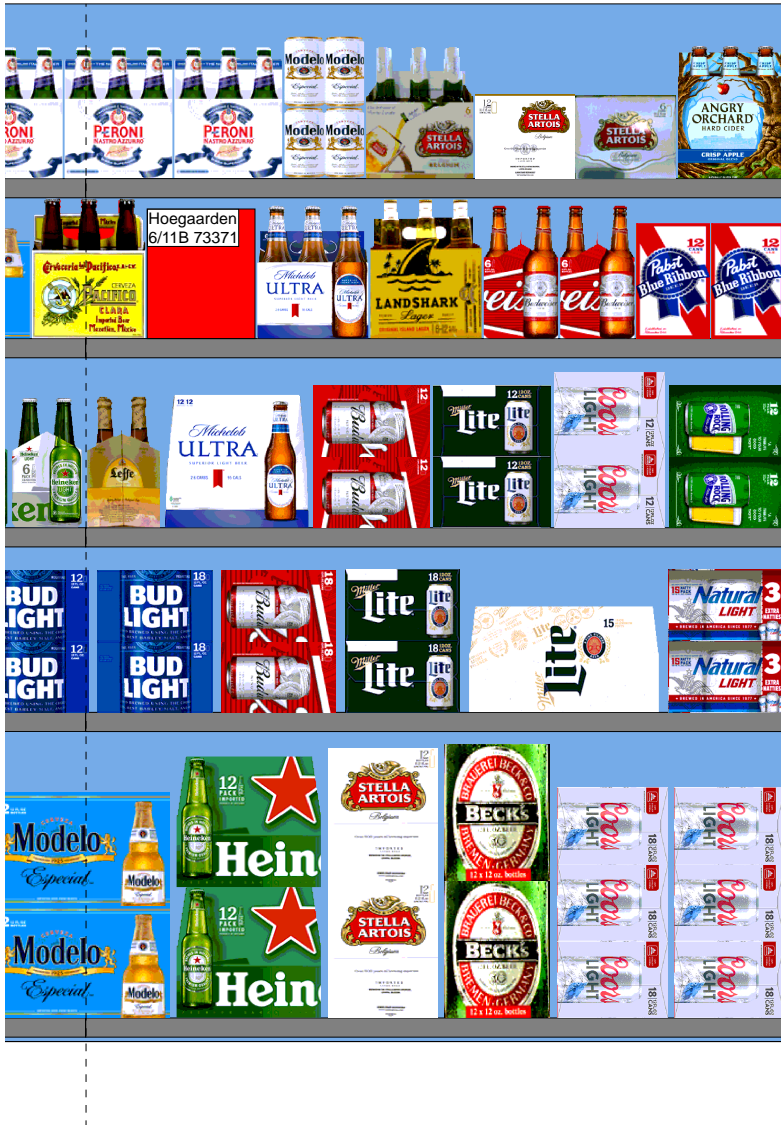
Name: 3	W:48.00 in	D:14.00 in	Avail Space: 2.24 in		Ht Space: 11.68 in
UPC	WIC	Name	HFacings	Orientation	Units
3061300053	78529	Brooklyn Seasonal 6/12B	1	Front	3
74052210083	48395	Bell's Two Hearted Ale 6/12B	1	Side	2
79603011496	46460	Kona Big Wave Golden Ale 6/12B	1	Front	3
8066095625	32295	Corona Light 6/12B	1	Front	3
8066095605	1021	Corona Extra 6/12B	1	Front	3
7289000011	2018	Heineken 6/12B	1	Side	2
7289000158	71139	Heineken Premium Light 6/12B	1	Side	2

Name: 2	W:48.00 in	D:14.00 in	Avail Space: 4.58 in		Ht Space: 9.68 in
UPC	WIC	Name	HFacings	Orientation	Units
85909300244	95749	SixPoint The Crisp 6/12C	1	Side	2
3061300001	32725	Brooklyn Lager 6/12B	1	Front	2
3061311212	106881	Brooklyn Defender IPA 6/12B	1	Front	2
81760601000	89787	Captain Lawrence Pale Ale 6/12B	1	Front	2
8769200127	93775	Samuel Adams Rebel IPA 6/12B	1	Front	2
8066095765	33519	Modelo 6/12B	1	Front	2

Name: 1	W:48.00 in	D:14.00 in	Avail Space: 9.63 in		Ht Space: 12.00 in
UPC	WIC	Name	HFacings	Orientation	Units
85146400308	90477	Revolution Anti Hero IPA 6/12C	1	Front	4
81790400083	104190	Elysian Space Dust IPA 6/12B	2	Front	4
7199009511	43588	Blue Moon Belgian White Ale 6/12B	2	Front	4

WALGREENS STORE # 14392 WARM

SPRING 2019



H: 6 ft 5.25 in | W: 8 ft | D: 2 ft | # of segments: 2

Name: 10	W:48.00 in	D:14.00 in	Avail Space: 8.19 in	Ht Space: 19.68 in	
UPC	WIC	Name	HFacings	Orientation	Units
7289000016	12038	Heineken 12/12B	1	Front	4
78615000014	50820	Stella Artois 12/11B	1	Side	2
8248812300	32256	Becks 12/12B	1	Side	2
7199030017	33699	Coors Light 18/12C	2	Side 90	6

Name: 9	W:48.00 in	D:14.00 in	Avail Space: 3.37 in	Ht Space: 11.36 in	
UPC	WIC	Name	HFacings	Orientation	Units
1820053218	33079	Bud Light 18/12C	1	Side 90	2
1820011218	33077	Budweiser 18/12C	1	Side 90	2
3410057340	33307	Miller Lite 18/12C	1	Side 90	2
3410057707	86434	Miller Lite 15/16AL	1	Front	2
1820020077	118393	Natural Light 15/12C	1	Side 90	2

Name: 8	W:48.00 in	D:14.00 in	Avail Space: 1.75 in	Ht Space: 11.68 in	
UPC	WIC	Name	HFacings	Orientation	Units
78615000030	72133	Leffe Blonde 6/11B	1	Side	2
1820005990	49018	Michelob Ultra 12/12B	1	Front	2
1820011047	455	Budweiser 12/12C	1	Side 90	2
3410057636	2789	Miller Lite 12/12C	1	Side 90	2
7199000048	5704	Coors Light 12/12C	1	Side 90	2
7143934450	12395	Rolling Rock 12/12C	1	Side 90	2

Name: 7	W:48.00 in	D:14.00 in	Avail Space: -2.71 in	Ht Space: 9.68 in	
UPC	WIC	Name	HFacings	Orientation	Units
8066095301	28028	Pacifico Clara 6/12B	1	Front	2
78615000146	73371	Hoegaarden 6/11B	1	Front	2
1820005989	49017	Michelob Ultra 6/12B	1	Front	2
1820012982	73340	Land Shark Lager 6/12B	1	Front	2
1820000834	31349	Budweiser 6/12B	2	Side	2
2210000170	3428	Pabst 12/12C	2	Side	2

Name: 6	W:48.00 in	D:14.00 in	Avail Space: -8.17 in	Ht Space: 12.00 in	
UPC	WIC	Name	HFacings	Orientation	Units
18195400002	71205	Peroni Nastro Azzuro 6/12B	3	Front	6
8066095755	2878	Modelo 6/12C	1	Side	2
78615000001	48439	Stella Artois 6/11B	1	Front	2
78615000016	107394	Stella Artois 12/11C	1	Side	1
78615000200	108513	Stella Artois 6/11C	1	Front	3
8769282102	85445	Angry Orchard Crisp Apple 6/12B	1	Front	2

00237-01311-08-199-14