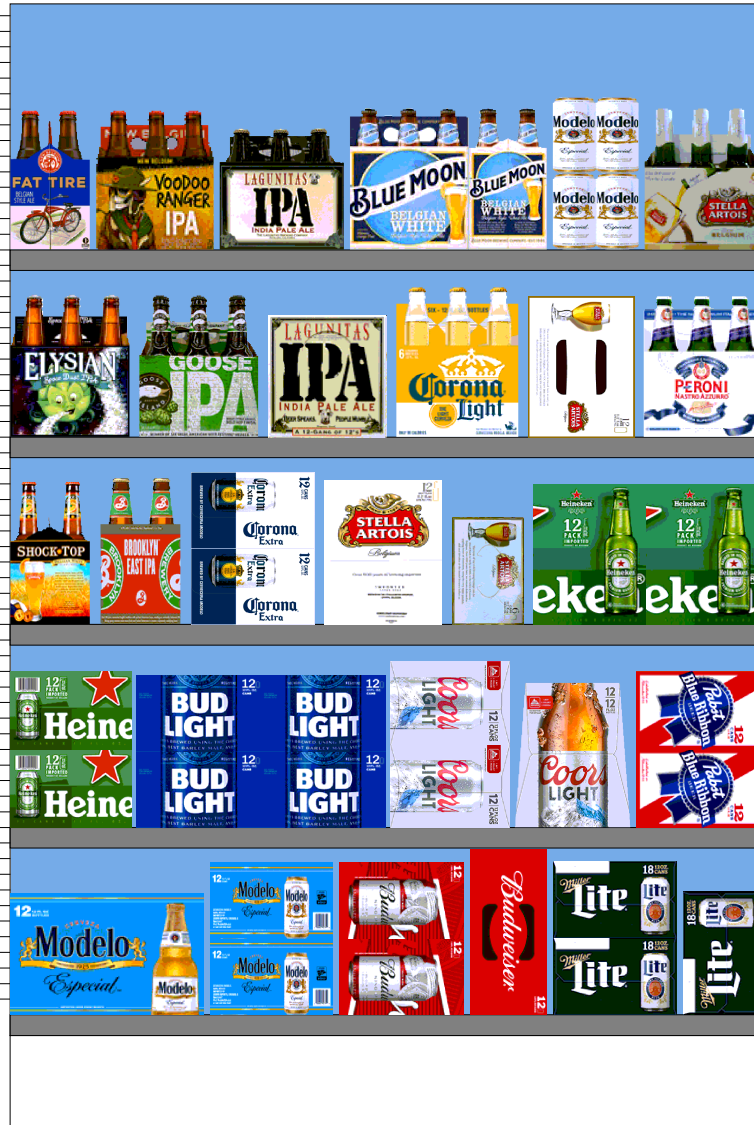


00237-02501-04-368-14



H: 6 ft W: 4 ft D: 1 ft 10.00 in # of segments: 1

Name: 5		W:48.00 in	D:22.00 in	Avail Space: 2.13 in		Ht Space: 10.68 in
UPC	WIC	Name	HFacings	Orientation	Units	
8066095757	9960	Modelo 12/12B	1	Front	2	
8066095715	47273	Modelo 12/12C	1	Side 90	4	
1820011047	455	Budweiser 12/12C	1	Side 90	6	
3410057340	33307	Miller Lite 18/12C	1	Side 90	3	

Name: 4		W:48.00 in	D:22.00 in	Avail Space: 1.41 in		Ht Space: 11.68 in
UPC	WIC	Name	HFacings	Orientation	Units	
7289000020	32294	Heineken 12/12C	1	Side 90	4	
1820053047	10401	Bud Light 12/12C	2	Side 90	8	
7199000048	5704	Coors Light 12/12C	1	Side 90	4	
7199030069	47532	Coors Light 12/12B	1	Side	2	
2210000170	3428	Pabst 12/12C	1	Side 90	4	

Name: 3		W:48.00 in	D:22.00 in	Avail Space: 3.36 in		Ht Space: 10.68 in
UPC	WIC	Name	HFacings	Orientation	Units	
1820013986	75494	Shock Top Belgian White Ale 6/12B	1	Side	2	
3061300019	45026	Brooklyn East India Pale Ale 6/12B	1	Side	2	
8066095695	76448	Corona Extra 12/12C	1	Side 90	4	
78615000014	50820	Stella Artois 12/11B	1	Side	2	
78615000200	108513	Stella Artois 6/11C	1	Top 90	3	
7289000016	12038	Heineken 12/12B	2	Side	4	

Name: 2		W:48.00 in	D:22.00 in	Avail Space: 3.05 in		Ht Space: 10.68 in
UPC	WIC	Name	HFacings	Orientation	Units	
81790400083	104190	Elysian Space Dust IPA 6/12B	1	Front	4	
73692011132	44804	Goose Island India Pale Ale 6/12B	1	Front	4	
72383010009	51429	Lagunitas IPA 6/12B	1	Side	2	
8066095625	32295	Corona Light 6/12B	1	Front	4	
78615000016	107394	Stella Artois 12/11C	1	Top 90	3	
18195400002	71205	Peroni Nastro Azzuro 6/12B	1	Front	4	

Name: 1		W:48.00 in	D:22.00 in	Avail Space: 1.87 in		Ht Space: 15.75 in
UPC	WIC	Name	HFacings	Orientation	Units	
75452700022	45281	New Belgium Fat Tire Amber Ale 6/...	1	Side	2	
75452700066	114621	New Belgium VooDoo Ranger IPA ...	1	Front	4	
72383000009	48153	Lagunitas IPA 6/12B	1	Front	4	
7199009511	43588	Blue Moon Belgian White Ale 6/12B	1	Front	6	
8066095755	2878	Modelo 6/12C	1	Side	4	
78615000001	48439	Stella Artois 6/11B	1	Front	4	