



Clare Rose



King Kullen #46 Bethpage

600 Stewart Ave.

24 Foot Domestic and 12 Foot Import Cooler





Clare Rose



King Kullen #46 Bethpage

600 Stewart Ave.

24 Foot Domestic and 12 Foot Import Cooler

8ft Ft Cooler





Clare Rose



King Kullen #46 Bethpage

600 Stewart Ave.

24 Foot Domestic and 12 Foot Import Cooler

24 Ft Cooler





Clare Rose

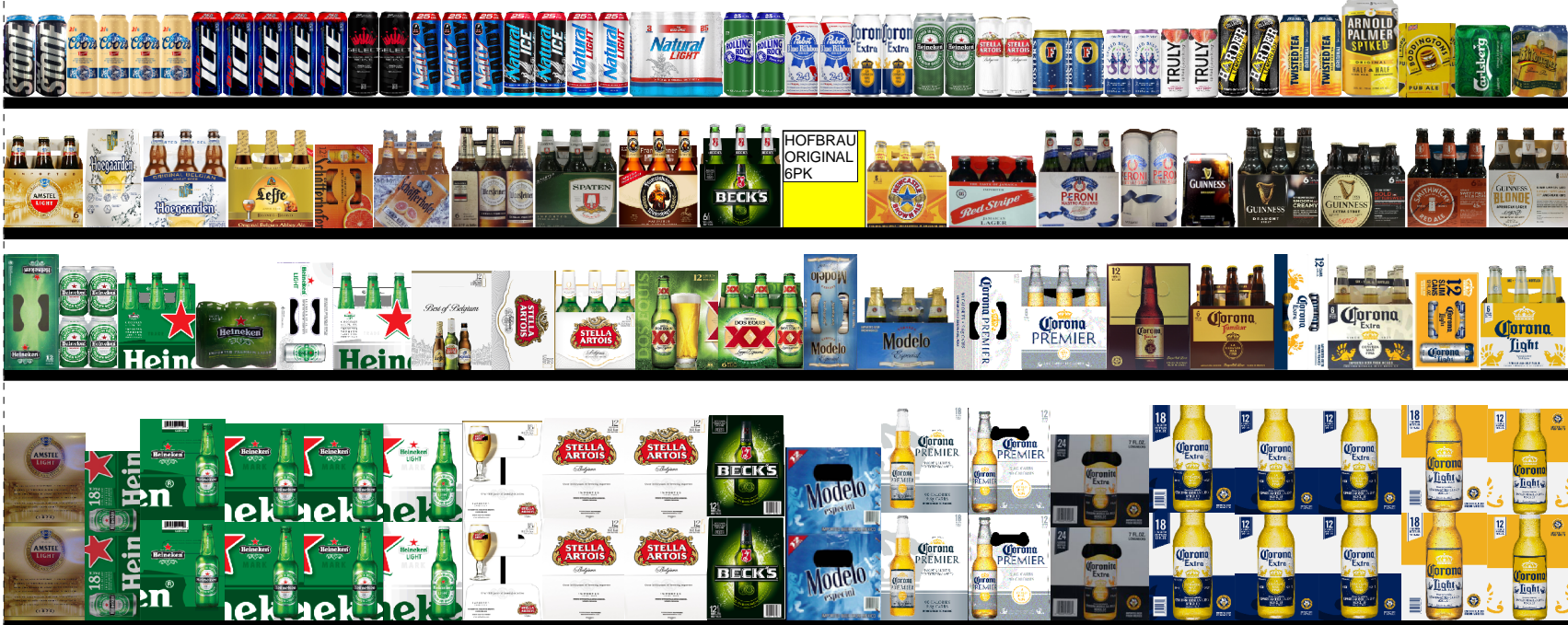


King Kullen #46 Bethpage

600 Stewart Ave.

24 Foot Domestic and 12 Foot Import Cooler

12 Ft Cooler



PLANOGRAM BACKING TABLE

KK#46 - Bethpage.psa

Planogram: 46-BETHPAGE(24 Foot Domestic & 12 Foot Import)

Segment #1 : Shelf #4 DEPTH: 22 in WIDTH: 96 in DISTANCE FROM TOP OF BASE SHELF TO BOTTOM OF SHELF: 0.00 in

POS	# FAC	UPC	NAME	CASES	CAPACITY	UNITS HIGH	DOS	MVMT
43	1	8769210014	SAM ADAMS LAGER 12PK BT	2.0	4	2	8.8	3.2
44	1	8769201103	SAM ADAMS SEASONAL 12PBTL	2.0	4	2	7.7	3.6
45	1	8769229103	SAM ADAMS MIX 12PK BTL	2.0	4	2	10.4	2.7
46	1	68174500145	BLUE PT SUMMER 18PK CAN	9999999...	4	2	9.0	3.1
47	1	68174500134	BLUE PT TOASTED LGR 18PK	2.0	2	2	4.4	3.2
48	1	68174500210	Blue Point Shore Thing 18/12C	2.0	2	2	0.0	0.0
49	1	73692011651	GOOSE IPA 15PK CAN	1.0	2	2	4.8	2.9
50	1	64286090024	FOUNDERS ALL DAY 15P	1.0	2	2	5.0	2.8
51	1	85961200134	21ST AMENDMENT VARTY 15PK	1.0	2	2	6.0	2.4
52	1	81601402080	SOUTHERN TIER OVERPACKD 15P CA	1.0	2	2	8.0	1.8
53	1	63027988736	VICTORY KICKBACK 15PK	9999999...	4	2	18.2	1.5
54	1	7199009516	BLUE MOON 12OZ NR	2.0	4	2	7.8	3.6
55	1	7199009536	BLUE MOON HONEY MOON 12PK	2.0	4	2	12.5	2.2
56	1	3410051607	LEINENKUGEL SMMR SHNDY 12P	2.0	4	2	9.1	3.1
57	1	72383010009	Lagunitas IPA 12/12B	2.0	4	2	0.0	0.0

Segment #1 : Shelf #3 DEPTH: 22 in WIDTH: 96 in DISTANCE FROM TOP OF BASE SHELF TO BOTTOM OF SHELF: 23.00 in

POS	# FAC	UPC	NAME	CASES	CAPACITY	UNITS HIGH	DOS	MVMT
31	1	85114800506	GSB SEASONAL 6PK	1.0	4	1	9.0	3.1
32	1	85998900516	GPH OTHERSIDE IPA 6PK	1.0	4	1	9.7	2.9
33	1	85998900522	GPH SEASONAL 6PK	1.0	4	1	10.6	2.6
34	1	68174511118	BLUE PT SEASONAL 6PK	1.0	4	1	5.6	5.0
35	1	68174511112	BLUE PT TOASTED LAGER 6PK BTL	1.0	4	1	10.1	2.8
36	1	68174511102	BLUE PT HOPTICAL ILL 6PK BTL	1.0	4	1	10.3	2.7
37	1	68174511130	BLUE PT BLUEBRY 6PK BTL	1.0	4	1	17.5	1.6
38	1	1820028156	SHOCK TOP 15PK 12OZ CAN	1.0	2	2	7.3	1.9
39	1	1820013986	SHOCK TOP 6PK	1.0	4	1	16.3	1.7
40	1	7199017052	BLUE MOON 15PK	1.0	2	2	10.0	1.4
41	1	7199009511	BLUE MOON ALE 6PK BTL	1.0	4	1	8.6	3.3
42	1	7199009532	BLUE MOON SEASONAL ALE 6	1.0	4	1	18.7	1.5

Segment #1 : Shelf #2 DEPTH: 22 in WIDTH: 96 in DISTANCE FROM TOP OF BASE SHELF TO BOTTOM OF SHELF: 36.00 in

POS	# FAC	UPC	NAME	CASES	CAPACITY	UNITS HIGH	DOS	MVMT
18	1	8769210012	SAM ADAMS LAGER 6PK BTL	1.0	4	1	13.8	2.0
19	1	8769230050	SAM ADAMS SEASONAL 6P BTL	1.0	4	1	6.1	4.6
20	1	8769200004	SAM ADAMS CRYSPALE ALE 6PK	1.0	4	1	12.2	2.3
21	1	8769200848	Samuel Adams Boston 262 Marathon 12/1...	1.5	3	1	0.0	0.0
22	1	75452700024	NEW BELG FAT TIRE 12PK BT	1.0	2	1	7.4	1.9
23	1	75452700022	NEW BELG FAT TIRE 6PK BTL	1.0	4	1	16.8	1.7
24	1	75452700066	NEW BELG VOODOO 6PK BT	1.0	4	1	15.4	1.8
25	1	79603082496	KONA BIG WAVE 12PK CAN	1.0	2	1	8.8	1.6
26	1	79603011496	KONA BIG WAVE 6PK	1.0	4	1	11.0	2.5
27	1	79603031499	KONA SEASONAL 6PK	9999999...	4	1	11.7	2.4
28	1	73692011132	GOOSE ISL IPA 6PK BTL	1.0	4	1	9.9	2.8
29	1	73692011824	Goose Island Next Coast IPA 6/12B	1.0	4	1	0.0	0.0
30	1	3410051605	LEINENKUGEL SMMR SHNDY 6PK	1.0	4	1	8.5	3.3

Segment #1 : Shelf #1 DEPTH: 22 in WIDTH: 96 in DISTANCE FROM TOP OF BASE SHELF TO BOTTOM OF SHELF: 48.00 in

POS	# FAC	UPC	NAME	CASES	CAPACITY	UNITS HIGH	DOS	MVMT
1	1	8769200687	Samuel Adams New England IPA 6/12C	1.0	4	2	0.0	0.0

PLANOGRAM BACKING TABLE

2	1	3061300001	BKLYN LAGER 6P BTL	1.0	4	1	17.7	1.6
3	1	3061300053	BKLYN WINTER ALE 6PK	1.0	4	1	11.7	2.4
4	1	3061311212	BKLYN DEFENDER IPA 6PK	0.5	2	1	25.8	1.6
5	1	85998900520	GPH SUMMER ALE 6PK CANS	1.0	4	2	10.4	2.7
6	1	85114900415	LONG IRELAND SNL 6PK CAN	9999999...	2	1	9.3	1.5
7	1	85114900424	LI CELTIC ALE 6PK CAN	9999999...	2	1	8.3	1.7
8	1	68174500208	Blue Point Shore Thing 6/12C	1.0	4	2	0.0	0.0
9	1	68174500068	BLUE PT BCH PLUM GOSE 6PK	9999999...	2	1	14.0	1.0
10	1	68174500215	Blue Point The IPA 6/12C	1.0	4	2	0.0	0.0
11	1	86273700002	MONTAUK DRIFTWOOD 6PK	1.0	4	2	10.2	2.8
12	1	86273700007	MONTAUK SESS IPA 6PK	1.0	4	2	13.5	2.1
13	1	86273700006	MONTAUK SEASONAL 6PK	1.0	4	2	6.7	4.2
14	1	86907100026	MONTAUK WATERMELON 6PK	1.0	4	2	6.2	4.5
15	1	86907100027	MONTAUK WAVE CHASER 6PK	1.0	4	2	6.5	4.3
16	1	85909300246	SIXPOINT RESIN 6PK CANS	0.8	3	1	7.2	2.9
17	1	85146400308	REVOLUTION ANTI HERO 6PK	1.0	4	2	15.1	1.9

Segment #2 : Shelf #4 DEPTH: 22 in WIDTH: 288 in DISTANCE FROM TOP OF BASE SHELF TO BOTTOM OF SHELF: 0.00 in

POS	# FAC	UPC	NAME	CASES	CAPACITY	UNITS HIGH	DOS	MVMT
186	1	3410001509	MILLER HIGH LIFE LN 12PKBTL	2.0	4	2	6.7	4.2
187	1	7199048045	KEYSTONE LT 15PK CAN	1.0	2	2	8.2	1.7
188	1	1820020133	Natural Light Naturdays 12/12C	4.0	8	4	0.0	0.0
189	1	1820020077	NATURAL LT 15PK CAN	2.0	4	4	3.4	8.2
190	1	1820028443	NATURAL ICE 15PK CAN	2.0	4	4	4.2	6.7
191	1	8992427896	YUENGLING LAGER 12PK BTL	2.0	4	2	6.5	4.3
192	1	2210000412	Pabst Easy 12/12C	2.0	4	2	0.0	0.0
193	1	2210000170	PABST 12PK CANS	2.0	4	2	8.3	3.4
194	1	3410057509	MILLER LT L/N 12PK BTL	2.0	4	2	5.8	4.9
195	1	3410057256	MILLER LITE 18PK BTL	2.0	2	2	5.3	2.6
196	1	3410057340	MILLER LITE 18PK CAN	2.0	2	2	4.4	3.2
197	1	7199030078	COORS LT 18PK BTLS	2.0	2	2	3.6	3.9
198	1	7199030017	COORS LT 18PK CANS	4.0	4	4	4.4	6.3
199	1	7199031600	COORS LIGHT 24PK CAN SUIT	4.0	4	4	5.9	4.8
200	1	7199030079	COORS LT 24PK SILVER BOX	2.0	2	2	8.0	1.8
201	1	1820053047	BUD LT 12PK CANS	4.0	8	4	5.7	9.8
202	2	1820053308	BUD LT 18PK BTL	4.0	4	2	4.3	6.5
203	1	1820053218	BUD LT 18P CAN	8.0	8	4	6.7	8.4
204	1	1820053168	BUD LIGHT 24PK CANS	4.0	4	4	3.8	7.4
205	1	1820053349	BUD LIGHT 24-PACK BOTTLES	2.0	2	2	5.2	2.7
206	1	1820011047	BUD12PK CANS	4.0	8	4	3.5	15.9
207	1	1820011308	BUD18PK BTL	2.0	2	2	3.6	3.9
208	1	1820011218	BUD18P CAN	4.0	4	4	5.1	5.5
209	1	1820011168	BUD 24PK CANS	4.0	4	4	6.0	4.6
210	1	1820011349	BUD 24-PACK BOTTLES	2.0	2	2	6.2	2.3
211	1	1820012998	LAND SHARK 12PK	2.0	4	2	9.0	3.1
212	1	1820005990	MICH ULT 12PK BTL	2.0	4	2	5.2	5.4
213	1	1820096721	MICH ULT 18PK CAN	3.0	3	3	3.0	7.0
214	1	1820096624	MICH ULTRA 18P BTLS	2.0	2	2	3.6	3.8
215	1	1820020019	Michelob Ultra Inf Lime PrcklyPr 12/12B	2.0	4	2	0.0	0.0
216	1	1820020083	MICH ULTRA PURE GOLD 12PK	2.0	4	2	8.7	3.2
217	1	85389700227	SPIKED SLTZR MIXED 12PK	3.0	6	3	7.4	5.7
218	1	63598526089	WHITE CLAW BL CHERRY 12PK	9999999...	8	2	16.0	3.5
219	1	63598554890	WHITE CLAW 12PK	3.0	6	2	5.1	8.3
220	1	8769200424	TRULY VARIETY 12PK CAN	3.0	6	3	8.8	4.8

Segment #2 : Shelf #3 DEPTH: 22 in WIDTH: 288 in DISTANCE FROM TOP OF BASE SHELF TO BOTTOM OF SHELF: 23.00 in

POS	# FAC	UPC	NAME	CASES	CAPACITY	UNITS HIGH	DOS	MVMT
148	1	3410001505	MILLER HIGH LIFE 6PK BTL	1.0	4	1	11.3	2.5
149	1	8992420111	YUENGLING LT LAGER 6PK BTL	1.0	4	1	9.3	3.0
150	1	8992429386	YUENGLING BLK TAN 12PK BTL	1.0	2	1	8.6	1.6
151	1	8992433125	YUENGLING GLDN PLSNR 12PK	1.0	2	1	14.0	1.0
152	1	8992433567	YUENGLING GLDN PILSNER 6P	1.0	4	1	14.0	2.0

PLANOGRAM BACKING TABLE

153	1	8992427891	YUENGLING LAGER 6PK BTL	1.0	4	1	11.2	2.5
154	1	8992427898	YEUNGLING LAGER 12 CAN	1.0	2	1	9.8	1.4
155	1	2210000289	PABST 6PK BTL	1.0	4	1	14.4	1.9
156	1	3410057505	MILLER LT LONG 6PK BTL	1.0	4	1	13.3	2.1
157	1	3410057023	MILLER LITE ALUM PINT 9P	1.0	2	1	7.4	1.9
158	1	3410057636	MILLER LT FRIDGE PK 12PK	2.0	4	2	6.0	4.7
159	1	3410057306	MILLER LITE SUITCASE 24PK CANS	2.0	2	2	7.9	1.8
160	2	7199000048	COORS LT 12PK CAN	4.0	8	2	5.6	10.1
161	1	7199030125	Coors Light 12/8C	1.5	3	1	0.0	0.0
162	1	7199000008	COORS LT BEER 6PK CAN	1.0	4	2	11.0	2.5
163	1	7199030005	COORS LT LN 6PK BTL	1.0	4	1	10.4	2.7
164	1	7199030069	COORS LT LN 12PK BTL	1.0	2	1	2.4	5.9
165	1	1820000833	BUD LT LN 6P BTL	1.0	4	1	8.9	3.1
166	1	1820000106	BUD LIGHT 6PK CAN 12OZ	1.0	4	2	9.3	3.0
167	1	1820008989	BUD LIGHT 8PK 16OZ CAN	0.7	2	1	8.2	1.7
168	2	1820000769	BUD LT LN 12PK BTL	2.0	4	1	4.3	6.5
169	1	1820000834	BUD LN 6P BTL	1.0	4	1	11.3	2.5
170	1	1820000016	BUD BEER 6PK CAN 12OZ	1.0	4	2	7.2	3.9
171	1	1820008981	BUD 8PK 16OZ CAN	0.7	2	1	7.9	1.8
172	2	1820000771	BUD LN 12PK BTL	2.0	4	1	4.2	6.6
173	1	1820020069	BUD AMBER LAGER 6PK	9999999...	4	1	3.9	7.2
174	1	1820012982	LAND SHARK 6PK BTL	1.0	4	1	13.7	2.0
175	1	1820020983	LAND SHARK 12PK CAN	1.0	2	1	9.2	1.5
176	1	1820005989	MICH ULTRA 6PK BTL	1.0	4	1	8.4	3.3
177	1	1820006991	MICH ULT 12PK CANS	1.5	3	1	7.2	2.9
178	1	1820012989	Michelob Ultra Inf Lime PrcklyPr 6/12B	1.0	4	1	0.0	0.0
179	1	1820016984	Michelob Ultra Inf Lime PrcklyPr 12/12C SC	1.5	3	1	0.0	0.0
180	1	1820020082	MICH ULTRA PURE GOLD 6PK	1.0	4	1	12.4	2.3
181	1	1820020144	Michelob Ultra Pure Gold 12/12C SC	1.5	3	1	0.0	0.0
182	1	8200078142	SMIRNOFF SPIKED SLTZR 12P	1.0	2	2	5.6	2.5
183	1	3354495070	SVEDKA STRAWBERRY 6PK CAN	9999999...	2	1	4.8	2.9
184	1	3354495076	SVEDKA VARIETY 12PK CAN	9999999...	2	1	6.0	2.3
185	1	9999900090	Wild Basin Spiked Seltzer 12/12C SC	1.5	3	1	0.0	0.0

Segment #2 : Shelf #2 DEPTH: 22 in WIDTH: 288 in DISTANCE FROM TOP OF BASE SHELF TO BOTTOM OF SHELF: 36.00 in

POS	# FAC	UPC	NAME	CASES	CAPACITY	UNITS HIGH	DOS	MVMT
102	1	78624311990	FLYING DOG RAGING 6PK	1.0	4	1	15.6	1.8
103	1	7167007106	SARANAC BEERS OF SUMM 12PKBTL	1.0	2	1	6.7	2.1
104	1	9999900050	Saranac 100 12/12C	1.0	2	1	0.0	0.0
105	1	64286015024	FOUNDERS ALL DAY 6PK CANS	1.0	4	2	15.5	1.8
106	1	64286080031	Founders Solid Gold 12/12C	1.0	2	1	0.0	0.0
107	1	64286020007	FOUNDERS DIRTY BSTRD 6P	1.0	4	1	20.0	1.4
108	1	74052211968	Bell's Official Hazy IPA 6/12C	1.0	4	2	0.0	0.0
109	1	81790400083	ELYSIAN SPACE DUST IPA 6P	1.0	4	1	13.8	2.0
110	1	81790400053	Elysian Seasonal 6/12B	1.0	4	1	0.0	0.0
111	1	8378337521	SIERRA NEV PALE 6P BTL	1.0	4	1	14.0	2.0
112	1	8378333100	SIERRA NEVADA TORPEDO 6PK	1.0	4	1	14.2	2.0
113	1	8378322822	SIERRA NEVADA SEASONAL 6P	1.0	4	1	17.1	1.6
114	1	7248002403	SCHAEFER 12 PK CAN	1.0	2	1	7.4	1.9
115	1	7143934450	ROLL ROCK 12PK CAN	1.0	2	1	6.9	2.0
116	1	7143945712	ROLL ROCK LN 12 PK BTLS	1.0	2	1	5.6	2.5
117	1	7143934806	ROLL ROCK 6PK BTL	1.0	4	1	18.3	1.5
118	1	1820018993	BUD LT PLATINUM 6PK BTL	1.0	4	1	15.2	1.8
119	1	1820018992	BUD LT PLATINUM 12PK BTL	1.0	2	1	8.6	1.6
120	1	1820020080	BUD LT ORANGE 12PK BOTTLE	1.0	2	1	6.6	2.1
121	1	1820020079	BUD LT ORANGE 6PK BTL	1.0	4	1	16.0	1.8
122	1	1820014991	BUD LIGHT LIME 6PK BTL	1.0	4	1	11.3	2.5
123	1	1820014990	BUD LIGHT LIME 12PK	1.0	2	1	7.2	2.0
124	1	1820015983	BUD LT LIME 12PK CAN	1.5	3	1	21.0	1.0
125	1	1820020140	Bud Light Lemon Tea 6/12B	1.0	4	1	0.0	0.0
126	1	8200072385	SMIRNOFF ICE 6PK BTL	1.0	4	1	14.2	2.0
127	1	63598506074	MIKES SEASONAL 6P BTL	1.0	4	1	7.2	3.9
128	1	63598506744	MIKES BERRY 6PK BTL	1.0	4	1	6.2	4.5
129	1	63598510062	MIKES HARD LEMONADE 6PK BTL	1.0	4	1	8.9	3.1

PLANOGRAM BACKING TABLE

130	1	63598512998	MIKES VAR 12PK BTL	1.0	2	1	5.7	2.5
131	1	63598526042	MIKES HARDER VARIETY 8PK	9999999...	3	1	12.4	1.7
132	1	1820022992	BUD LT SEASONAL RITA 12PK	1.5	3	1	10.5	2.0
133	1	3354400013	Corona Refresca Variety Pack 12/12C SC	1.5	3	1	0.0	0.0
134	1	1820020130	Ritas Spritz Variety Pack 12/12C SC	1.5	3	1	0.0	0.0
135	1	81062803026	Golden Road Spk Agua Fresca Vty 12/12...	1.5	3	1	0.0	0.0
136	1	3410051681	Cape Line Variety Pack 12/12C SC	1.5	3	1	0.0	0.0
137	1	85531000806	Crook & Marker Zero Sameness 8/12C	1.0	3	1	0.0	0.0
138	1	85531000827	Crook & Marker Zero Guilt 8/12C	1.0	3	1	0.0	0.0
139	1	1820020132	Stella Artois Spritzer 6/12C	0.8	3	1	0.0	0.0
140	1	85389700228	SPIKED SLTZR CRNBRY 6PK C	0.8	3	1	10.5	2.0
141	1	1820028548	Bon & Viv SS Variety Pack 6/12C	0.8	3	1	0.0	0.0
142	1	63598502598	WHITE CLAW LIME 6PK	0.8	3	1	8.7	2.4
143	1	63598526087	White Claw Mango HrdSeltzer 6/12C	0.8	3	1	0.0	0.0
144	1	63598520025	WHITE CLAW BC SELTZER 6PK	0.8	3	1	5.7	3.7
145	1	8769200781	Truly Spiked Spkkg Rose 6/12C	0.8	3	1	0.0	0.0
146	1	8769200792	Truly Spiked Spkkg Bluebery Acai 6/12C	0.8	3	1	0.0	0.0
147	1	8769200686	TRULY BERRY VARIETY 12PK	9999999...	3	1	5.0	4.2

Segment #2 : Shelf #1 DEPTH: 22 in WIDTH: 288 in DISTANCE FROM TOP OF BASE SHELF TO BOTTOM OF SHELF: 49.00 in

POS	# FAC	UPC	NAME	CASES	CAPACITY	UNITS HIGH	DOS	MVMT
58	1	89785300293	CIGAR CITY JAI ALA 6PK	1.0	4	2	11.4	2.5
59	1	67243800261	Ballast Point Lager 6/12C	1.0	4	2	0.0	0.0
60	1	63848900193	Dogfish Head SeaQuenchAle 6/12C	1.0	4	2	0.0	0.0
61	1	63848900029	DOGFISH HEAD 60 MIN 6PK	1.0	4	1	20.0	1.4
62	1	63848900312	Dogfish Head 90 Min Imp IPA 6/12B	1.0	4	1	0.0	0.0
63	1	63027946506	VICTORY GOLDEN MONKEY 6PK	1.0	4	1	17.9	1.6
65	1	63625177612	STONE IPA 6P	0.5	2	1	11.0	1.3
64	1	63027977606	VICTORY SOUR MONKEY 6PK	0.5	2	1	11.2	1.3
66	1	4182700076	HARPOON IPA 6PK BTL	1.0	4	1	19.3	1.5
67	1	4182700146	HARPOON SEASONAL 6PK	1.0	4	1	16.6	1.7
68	1	3061311212	BKLYN DEFENDER IPA 6PK	1.0	4	1	25.8	1.6
69	1	72383000009	LAGUNITAS IPA 6PK	1.0	4	1	15.1	1.9
70	1	72383000020	LAGUNITAS LIL SUMPIN ALE 6PK	1.0	4	1	14.4	2.0
71	2	72383001192	Lagunitas IPA 1/19C	0.7	16	1	0.0	0.0
72	2	63848900306	Dogfish Head 60 Minute IPA 1/19C	0.7	16	1	0.0	0.0
73	1	1820021985	BUD 3PK 25OZ CAN	1.4	7	1	4.8	10.3
74	2	1820025000	BUD 25OZ CAN	0.9	14	1	8.0	12.2
75	1	1820021986	BUD LT 3PK 25OZ	1.4	7	1	5.7	8.6
76	2	1820025001	BUD LT 25OZ CAN	0.9	14	1	8.3	11.8
77	1	7199030120	COORS LIGHT 3PK 24OZ CAN	1.4	7	1	11.8	4.1
78	2	7199030065	COORS LT 24OZ CAN	1.2	14	1	17.9	5.5
79	2	3410000355	MILLER LITE 24OZ CAN	1.2	14	1	14.5	6.8
80	1	8760010139	CARLSBERG 1LT CAN	9999999...	2	1	4.8	2.9
81	1	1820024001	STELLA CIDRE 6PK	1.0	4	1	17.0	1.6
82	1	8834510151	STRONGBOW GOLD CIDER 6PK BTL	1.0	4	1	18.7	1.5
83	1	8834510201	STRONGBOW ROSE CIDER 6PK	1.0	4	1	14.8	1.9
84	1	64499613860	WOLFFER ROSE CIDER DRY 4P BTL	9999999...	2	1	6.9	2.0
85	1	86043100080	VIRTUE CIDER ROSE 6PK CAN	9999999...	2	1	5.2	2.7
86	1	8769200660	ANGRY ORCH ROSE CIDER 6PK	1.0	4	1	5.3	5.3
87	1	8769200149	ANGRY ORCH GRN APL 6PK	1.0	4	1	14.5	1.9
88	1	8769282102	ANGRY ORCH CRISP APPLE 6P	1.0	4	1	7.9	3.5
89	1	1820079047	ODOULS NA 12P CAN	1.0	2	1	5.7	2.5
90	1	1820000784	ODOULS NA 6P BTL	1.0	4	1	8.9	3.1
91	1	8248812700	BECKS N/A 6P BTL	1.0	4	1	14.4	2.0
92	1	7289000621	Heineken 0.0 6/12B	1.0	4	1	0.0	0.0
93	1	4257205715	CLAUSTHALER 6PK	1.0	4	1	9.6	2.9
94	1	70277008101	OMISSION LAGER 6PK	1.0	4	1	15.3	1.8
95	1	7031001559	Pura Still Spiked Mango 6/11B	1.0	4	1	0.0	0.0
96	1	61300874832	Arnold Palmer Spiked Half & Half 12/12C	1.0	2	1	0.0	0.0
97	1	61300874833	ARNOLD PALMER 6PK CAN	9999999...	3	1	6.5	3.3
98	1	84980600223	John Dalys Half & Half 6/12C	0.8	3	1	0.0	0.0
99	1	8769275102	TWISTED TEA HF&HF 6P BTL	1.0	4	1	11.2	2.5
100	1	8769283102	TWISTED TEA LEM 6P BTL	1.0	4	1	9.3	3.0

PLANOGRAM BACKING TABLE

101 1 8769283134 TWISTED TEA 12 PK CAN 1.0 2 1 6.4 2.2

Segment #3 : Shelf #4 DEPTH: 22 in WIDTH: 144 in DISTANCE FROM TOP OF BASE SHELF TO BOTTOM OF SHELF: 0.00 in

POS	# FAC	UPC	NAME	CASES	CAPACITY	UNITS HIGH	DOS	MVMT
284	1	7289010016	AMSTEL LIGHT 12PK BTL	2.0	4	2	9.1	3.1
285	1	7289000494	HEINEKEN 18PK CAN	2.0	2	2	6.3	2.2
286	1	7289000152	HEINEKEN 18 PK BTL	2.0	2	2	5.9	2.4
287	1	7289000016	HEINEKEN 12 PK BTL	2.0	4	2	4.5	12.3
288	1	7289000016	HEINEKEN 12 PK BTL	2.0	4	2	4.5	12.3
289	1	7289000159	HEINEKEN LT 12PK BTL	2.0	4	2	4.6	6.0
290	1	78615000149	STELLA ARTOIS 18PK BTL	2.0	2	2	7.6	1.9
291	2	78615000014	STELLA ARTOIS 12PK BTL	4.0	8	2	5.7	9.8
292	1	8248812300	BECKS 12PK BTL	2.0	4	2	4.6	6.1
293	1	8066095757	MODELO ESPECIAL 12PK BTL	1.0	2	2	4.0	3.5
294	1	3354400018	Corona Premier 18/12B	2.0	2	2	0.0	0.0
295	1	3354495042	CORONA PREMIER 12PK BTL	2.0	4	2	6.0	4.7
296	1	8066095408	CORONITA FIESTA BTLS PK 24 7OZ	2.0	2	2	5.9	2.4
297	1	8066095680	CORONA EXTRA 18PK BTL	2.0	2	2	3.9	3.6
298	2	8066095615	CORONA XTRA 12PK BTL	4.0	8	2	4.5	12.5
299	1	8066095623	CORONA LIGHT 18PK BTL	2.0	2	2	4.9	2.8
300	1	8066095675	CORONA LT 12PK BTL	2.0	4	2	3.3	8.6

Segment #3 : Shelf #3 DEPTH: 22 in WIDTH: 144 in DISTANCE FROM TOP OF BASE SHELF TO BOTTOM OF SHELF: 23.00 in

POS	# FAC	UPC	NAME	CASES	CAPACITY	UNITS HIGH	DOS	MVMT
263	1	7289000020	HEINEKEN 12PK KEG CAN	1.0	2	1	3.9	3.6
264	1	7289000000	HEINEKEN KEG 6PK CANS	1.0	4	2	16.1	1.7
265	1	7289000011	HEINEKEN 6PK BTL	1.0	4	1	7.5	3.7
266	1	7289000454	HEINEKEN 3PK 16 OZ CAN	2.0	8	1	15.4	3.6
267	1	7289000188	HEINEKEN LT 12PK CAN	1.0	2	1	6.5	2.2
268	1	7289000158	HEINEKEN LT 6PK BTL	1.0	4	1	12.0	2.3
269	1	1820020982	BEST OF BELGIUM 12PK BTLS	1.0	2	1	9.3	1.5
270	1	78615000016	STELLA ARTOIS 12PK CANS	1.5	3	1	8.8	2.4
271	1	78615000001	STELLA ARTOIS 6PK BTL	1.0	4	1	8.1	3.4
272	1	7231123012	DOS EQUIS SPC LAGER 12P BTL	1.0	2	1	8.4	1.7
273	1	7231163012	DOS EQUIS SPEC 6P BTL	1.0	4	1	15.8	1.8
274	1	8066095715	MODELO ESPECIAL 12PK CAN	1.0	2	1	8.8	1.6
275	1	8066095765	MODELO E SPECIAL 6PK BTL	0.8	3	1	10.0	2.1
276	1	3354495044	CORONA PREMIER 12PK CAN	1.5	3	1	7.4	2.8
277	1	3354495041	CORONA PREMIER 6PK BTL	1.0	4	1	10.0	2.8
278	1	3354495053	CORONA FAMILIAR 12PK BTL	1.0	2	1	7.0	2.0
279	1	3354495051	CORONA FAMILIAR 6PK BTL	1.0	4	1	18.7	1.5
280	1	8066095695	CORONA XTRA 12PK CAN	1.0	2	1	7.4	1.9
281	1	8066095605	CORONA XTRA 6PK BTL	1.0	4	1	6.0	4.6
282	1	8066095621	CORONA LIGHT 12PK CAN	1.5	3	1	8.4	2.5
283	1	8066095625	CORONA LT 6PK BTL	1.0	4	1	8.6	3.3

Segment #3 : Shelf #2 DEPTH: 22 in WIDTH: 144 in DISTANCE FROM TOP OF BASE SHELF TO BOTTOM OF SHELF: 36.00 in

POS	# FAC	UPC	NAME	CASES	CAPACITY	UNITS HIGH	DOS	MVMT
243	1	7289010011	AMSTEL LT 6PK BTL	1.0	4	1	15.1	1.9
244	1	78615000148	HOEGAARDEN 12P BTL	9999999...	2	1	10.1	1.4
245	1	78615000146	HOEGAARDEN WHITE ALE 6P	9999999...	4	1	20.3	1.4
246	1	78615000030	Leffe Blonde 6/11B	1.0	4	1	0.0	0.0
247	1	4257204412	SCHOFFERHOFER 12PK CANS	9999999...	2	1	5.6	2.5
248	1	4257204006	SCHOFFERHOFER GRPFRT 6PK	1.0	4	1	18.7	1.5
249	1	8205410454	WARSTEINER 6PK BTL	1.0	4	1	14.1	2.0
250	1	8839400002	SPATEN PREMIUM LAGER 6PK	1.0	4	1	11.2	2.5
251	1	8839400033	Franziskaner Hefe-Weisse 6/12B	1.0	4	1	0.0	0.0
252	1	8248812345	BECKS 6PK BTL	1.0	4	1	16.7	1.7
253	1	67574700111	HOFBRAU ORIGINAL 6PK	1.0	4	1	17.6	1.6
254	1	8834510005	NEW CASTLE BROWN ALE 6PK	1.0	4	1	13.8	2.0

PLANOGRAM BACKING TABLE

255	1	8382056793	RED STRIPE 6PK BTL	1.0	4	1	18.1	1.6
256	1	18195400002	PERONI NASTRO ASSURRO 6P BTL	1.0	4	1	7.3	3.9
257	1	18195400115	PERONI 6PK CAN	9999999...	2	1	4.9	2.9
258	1	8382012360	GUINNESS PUB DRGT 4P C	0.7	4	1	4.8	5.8
259	1	8382010401	GUINNESS DRAUGHT 6PK BTL	1.0	4	1	7.7	3.6
260	1	8382012393	GUINNESS STOUT 6PK BTL	1.0	4	1	9.5	2.9
261	1	8382007152	SMITHWICKS ALE 6P BTL	1.0	4	1	10.2	2.8
262	1	8382018132	GUINNESS BLONDE AMER 6PK	1.0	4	1	11.8	2.4

Segment #3 : Shelf #1 DEPTH: 22 in WIDTH: 144 in DISTANCE FROM TOP OF BASE SHELF TO BOTTOM OF SHELF: 48.00 in

POS	# FAC	UPC	NAME	CASES	CAPACITY	UNITS HIGH	DOS	MVMT
221	2	7199047712	KEYSTONE ICE 24OZ CAN	1.2	14	1	8.6	11.4
222	4	7199010071	COORS BANQUET 24OZ CAN	2.3	28	1	3.2	61.8
223	5	1820025006	BUD ICE 25OZ CAN	2.3	35	1	3.0	81.7
224	2	1820025005	BUD SELECT 25OZ CAN	0.9	14	1	8.4	11.6
225	3	1820025013	NATTY DADDY 25OZ CAN	1.4	21	1	3.9	37.9
226	2	1820025008	NATTY ICE 25OZ CAN	0.9	14	1	4.6	21.5
227	2	1820025002	NATURAL LT 25OZ CAN	0.9	14	1	7.6	12.9
228	1	1820021987	NATURAL LT 3PK/25OZ	1.4	7	1	6.6	7.4
229	2	7143900601	ROLL ROCK 25OZ CAN	0.9	14	1	8.5	11.5
230	2	2210000004	PABST BLUE RIBBON 24Z CAN	1.2	14	1	13.0	7.5
231	2	8066095643	CORONA 24OZ CAN	1.2	14	1	31.6	3.1
232	2	7289000119	HEINEKEN 24OZ CAN	1.2	14	1	21.8	4.5
233	2	78615000170	STELLA ARTOIS 19.2OZ CAN	0.7	16	1	20.4	5.5
234	2	7089701331	FOSTERS 25OZ CAN	1.0	12	1	5.6	15.0
235	2	85389700235S	Bon & Viv SS Blk Cherry Rosemary 1/16C	0.7	16	1	0.0	0.0
236	2	8769200729	Truly Spiked Spklg Wild Berry 1/16C	0.7	16	1	0.0	0.0
237	2	63598524583	MIKES HARDER LEMONADE 23.5OZ C	1.2	14	1	14.2	6.9
238	2	8769283231	TWISTED TEA 24OZ CAN	1.2	14	1	10.2	9.6
239	1	61300874829	ARNOLD PALMER 24OZ CAN	9999999...	2	1	2.6	5.3
240	1	76227481393	BODDINGTONS ALE 4PK CAN	0.7	4	1	14.2	2.0
241	1	8760010115	CARLSBERG LAGER 4PK	0.7	4	1	15.3	1.8
242	1	2050700011	BITBURGER 16OZ CANS 4P	0.7	4	1	10.5	2.7

SKUs on Planogram: 298