



Clare Rose



King Kullen #56 Valley Stream

231 West Merrick Rd

44 Foot Cooler

44 Ft Cooler

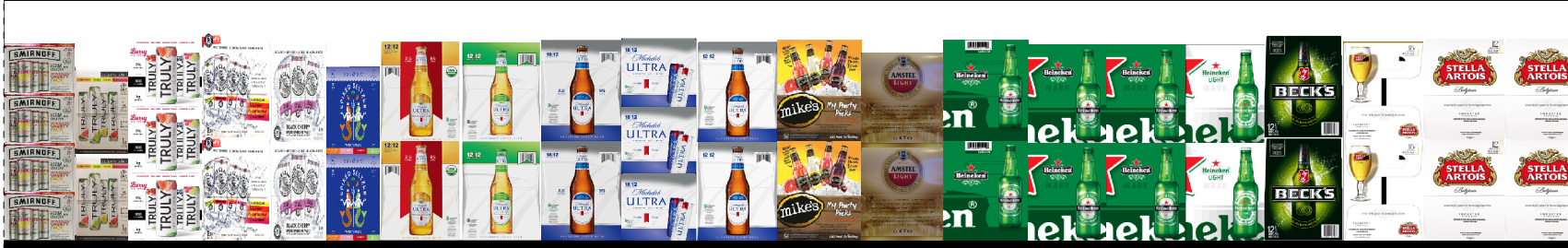




Clare Rose



King Kullen #56 Valley Stream  
231 West Merrick Rd  
44 Foot Cooler





Clare Rose



King Kullen #56 Valley Stream

231 West Merrick Rd

44 Foot Cooler

# 44 Ft Cooler





Clare Rose



King Kullen #56 Valley Stream  
231 West Merrick Rd  
44 Foot Cooler



Print Date

5/2/2019

Segment Width: 240.00

5/21/18

Page: 3 of 8

# PLANOGRAM BACKING TABLE

KK#56 - Valley Stream.psa

## Planogram: 56-VALLEY STREAM(44 Foot Cooler)

Segment #2 : Shelf #4      DEPTH: 22 in    WIDTH: 528 in    DISTANCE FROM TOP OF BASE SHELF TO BOTTOM OF SHELF: 0.00 in

POS	# FAC	UPC	NAME	CASES	CAPACITY	UNITS HIGH	DOS	MVMT
66	1	8200078142	SMIRNOFF SPIKED SLTZR 12P	2.0	4	4	13.6	2.1
67	1	8769200424	TRULY VARIETY 12PK CAN	2.0	4	2	14.1	2.0
68	1	8769200686	TRULY BERRY VARIETY 12PK	9999999...	6	3	16.8	2.5
69	1	63598554890	WHITE CLAW 12PK	3.0	6	2	14.7	2.9
70	1	63598526089	WHITE CLAW BL CHERRY 12PK	9999999...	4	2	14.0	2.0
71	1	85389700227	SPIKED SLTZR MIXED 12PK	2.0	4	2	7.4	3.8
72	1	1820020083	MICH ULTRA PURE GOLD 12PK	2.0	4	2	17.5	1.6
73	1	1820020019	Michelob Ultra Inf Lime PrcklyPr 12/12B	2.0	4	2	0.0	0.0
74	1	1820096624	MICH ULTRA 18P BTL	2.0	2	2	4.1	3.4
75	1	1820096721	MICH ULT 18PK CAN	3.0	3	3	7.5	2.8
76	1	1820005990	MICH ULT 12PK BTL	2.0	4	2	7.3	3.8
77	1	63598512998	MIKES VAR 12PK BTL	2.0	4	2	9.8	2.9
78	1	7289010016	AMSTEL LIGHT 12PK BTL	2.0	4	2	13.6	2.1
79	1	7289000152	HEINEKEN 18 PK BTL	2.0	2	2	6.5	2.1
80	2	7289000016	HEINEKEN 12 PK BTL	4.0	8	2	4.4	12.8
81	1	7289000159	HEINEKEN LT 12PK BTL	2.0	4	2	6.4	4.4
82	1	8248812300	BECKS 12PK BTL	2.0	4	2	10.9	2.6
83	1	78615000149	STELLA ARTOIS 18PK BTL	2.0	2	2	5.0	2.8
84	2	78615000014	STELLA ARTOIS 12PK BTL	4.0	8	2	3.7	15.1
150	2	8066095757	MODELO ESPECIAL 12PK BTL	2.0	4	2	4.4	6.4
151	1	8066095787	NEGRA MODELO 12PK BTL	1.0	2	2	7.0	2.0
152	1	3354495042	CORONA PREMIER 12PK BTL	2.0	4	2	6.4	4.4
153	1	8066095408	CORONITA FIESTA BTL	2.0	2	2	3.3	4.2
154	1	8066095680	CORONA EXTRA 18PK BTL	2.0	2	2	3.9	3.6
155	3	8066095615	CORONA XTRA 12PK BTL	6.0	12	2	4.0	21.1
156	1	8066095623	CORONA LIGHT 18PK BTL	2.0	2	2	6.6	2.1
157	1	8066095675	CORONA LT 12PK BTL	2.0	4	2	5.0	5.6
158	1	8769229103	SAM ADAMS MIX 12PK BTL	2.0	4	2	11.6	2.4
159	1	8769201103	SAM ADAMS SEASONAL 12PBTL	2.0	4	2	9.4	3.0
160	1	72383010009	Lagunitas IPA 12/12B	2.0	4	2	0.0	0.0
161	1	85961200134	21ST AMENDMENT VARTY 15PK	1.0	2	2	8.1	1.7
162	1	64286090024	FOUNDERS ALL DAY 15P	1.0	2	2	7.5	1.9
163	1	73692011651	GOOSE IPA 15PK CAN	1.0	2	2	6.7	2.1
164	1	68174500134	BLUE PT TOASTED LGR 18PK	2.0	2	1	10.2	1.4
165	1	68174500210	Blue Point Shore Thing 18/12C	2.0	2	1	0.0	0.0
166	1	1820028156	SHOCK TOP 15PK 12OZ CAN	1.0	2	2	7.8	1.8
267	1	1820020000	SHOCK TOP LEMONSHNDY 15PK	9999999...	4	2	17.9	1.6
268	1	7199009516	BLUE MOON 12OZ NR	2.0	4	2	5.9	4.7
269	1	7199009536	BLUE MOON HONEY MOON 12PK	2.0	4	2	12.0	2.3
270	1	1820011349	BUD 24-PACK BOTTLES	2.0	2	2	4.0	3.5
271	1	1820011168	BUD 24PK CANS	4.0	4	4	6.2	4.5
272	1	1820011218	BUD18P CAN	4.0	4	4	6.6	4.2
273	1	1820011308	BUD18PK BTL	2.0	2	2	6.5	2.1
274	1	1820000771	BUD LN 12PK BTL	2.0	4	2	6.2	4.5
275	1	1820053349	BUD LIGHT 24-PACK BOTTLES	2.0	2	2	4.6	3.1
276	1	1820053168	BUD LIGHT 24PK CANS	4.0	4	4	6.3	4.5
277	1	1820053218	BUD LT 18P CAN	4.0	4	4	6.2	4.5
278	1	1820053308	BUD LT 18PK BTL	2.0	2	2	3.8	3.7
279	1	1820000769	BUD LT LN 12PK BTL	2.0	4	2	6.6	4.2
280	1	7199030079	COORS LT 24PK SILVER BOX	2.0	2	2	3.6	3.8
281	1	7199031600	COORS LIGHT 24PK CAN SUIT	4.0	4	4	4.6	6.1
282	1	7199030078	COORS LT 18PK BTL	2.0	2	2	3.5	4.0
283	1	7199030017	COORS LT 18PK CANS	4.0	4	4	4.6	6.2
284	2	7199030069	COORS LT LN 12PK BTL	4.0	8	2	9.1	6.2
285	1	3410057306	MILLER LITE SUITCASE 24PK CANS	2.0	2	2	9.1	1.5
286	1	3410057256	MILLER LITE 18PK BTL	2.0	2	2	10.1	1.4

## PLANOGRAM BACKING TABLE

287	1	3410057340	MILLER LITE 18PK CAN	4.0	4	4	17.2	1.6
288	1	3410057509	MILLER LT L/N 12PK BTL	2.0	4	2	14.1	2.0
289	1	8992427896	YUENGLING LAGER 12PK BTL	2.0	4	2	9.0	3.1
290	1	1820020078	NATTY DADDY 15PK CAN	9999999...	8	4	12.4	4.5
291	1	1820028443	NATURAL ICE 15PK CAN	2.0	4	4	5.5	5.0
292	1	1820020077	NATURAL LT 15PK CAN	2.0	4	4	5.3	5.3
293	1	7248002403	SCHAEFER 12 PK CAN	4.0	8	4	11.9	4.7
294	1	3410031344	Milwaukee's Best 15/12C	1.0	2	2	0.0	0.0
295	1	3410001509	MILLER HIGH LIFE LN 12PKBTL	2.0	4	2	4.6	6.1

Segment #2 : Shelf #3 DEPTH: 22 in WIDTH: 528 in DISTANCE FROM TOP OF BASE SHELF TO BOTTOM OF SHELF: 23.00 in

POS	# FAC	UPC	NAME	CASES	CAPACITY	UNITS HIGH	DOS	MVMT
43	1	9999900090	Wild Basin Spiked Seltzer 12/12C SC	1.5	3	1	0.0	0.0
44	1	8769200678	TRULY WILD BERRY 6PK CAN	9999999...	3	1	12.4	1.7
45	1	63598526087	White Claw Mango HrdSeltzer 6/12C	0.8	3	1	0.0	0.0
46	1	63598526066	White Claw Raspberry HrdSeltzer 6/12C	0.8	3	1	0.0	0.0
47	1	1820028548	Bon & Viv SS Variety Pack 6/12C	0.8	3	1	0.0	0.0
48	1	85389700231	SPIKED SLTZR GRPFRT 6PK C	0.8	3	1	11.1	1.9
49	1	85531000827	Crook & Marker Zero Guilt 8/12C	1.3	4	2	0.0	0.0
50	1	85531000806	Crook & Marker Zero Sameness 8/12C	1.3	4	2	0.0	0.0
51	1	1820020144	Michelob Ultra Pure Gold 12/12C SC	1.5	3	1	0.0	0.0
52	1	1820020082	MICH ULTRA PURE GOLD 6PK	1.0	4	1	9.6	2.9
53	1	1820016984	Michelob Ultra Inf Lime PrcklyPr 12/12C SC	1.5	3	1	0.0	0.0
54	1	1820012989	Michelob Ultra Inf Lime PrcklyPr 6/12B	1.0	4	1	0.0	0.0
55	1	1820006991	MICH ULT 12PK CANS	1.5	3	1	8.4	2.5
56	1	1820005989	MICH ULTRA 6PK BTL	1.0	4	1	10.1	2.8
57	1	7289010011	AMSTEL LT 6PK BTL	1.0	4	1	17.6	1.6
58	1	7289000020	HEINEKEN 12PK KEG CAN	1.0	2	1	5.6	2.5
59	1	7289000000	HEINEKEN KEG 6PK CANS	1.0	4	2	16.7	1.7
60	1	7289000011	HEINEKEN 6PK BTL	1.0	4	1	6.1	4.6
61	1	7289000454	HEINEKEN 3PK 16 OZ CAN	2.0	8	1	12.7	4.4
62	1	7289000188	HEINEKEN LT 12PK CAN	1.0	2	1	8.6	1.6
63	1	7289000158	HEINEKEN LT 6PK BTL	1.0	4	1	14.4	2.0
64	1	8248812345	BECKS 6PK BTL	1.0	4	1	15.3	1.8
65	1	78615000016	STELLA ARTOIS 12PK CANS	1.5	3	1	8.4	2.5
131	1	78615000001	STELLA ARTOIS 6PK BTL	1.0	4	1	5.7	4.9
132	1	78615000036	Hoegaarden 6/11B	1.0	4	1	0.0	0.0
133	1	8066095715	MODELO ESPECIAL 12PK CAN	1.0	2	1	6.9	2.0
134	1	8066095765	MODELO E SPECIAL 6PK BTL	0.8	3	1	8.3	2.5
135	1	3354495044	CORONA PREMIER 12PK CAN	1.5	3	1	15.6	1.4
136	1	3354495041	CORONA PREMIER 6PK BTL	1.0	4	1	9.6	2.9
137	1	8066095401	Coronita Extra 6/7B	1.0	4	1	0.0	0.0
138	1	8066095695	CORONA XTRA 12PK CAN	1.0	2	1	6.2	2.3
139	1	8066095605	CORONA XTRA 6PK BTL	1.0	4	1	3.5	8.1
140	1	3354495053	CORONA FAMILIAR 12PK BTL	1.0	2	1	10.7	1.3
141	1	3354495051	CORONA FAMILIAR 6PK BTL	1.0	4	1	18.3	1.5
142	1	8066095621	CORONA LIGHT 12PK CAN	1.5	3	1	13.4	1.6
143	1	8066095625	CORONA LT 6PK BTL	1.0	4	1	8.8	3.2
144	1	7231163021	SOL 6PK BOTTLE	1.0	4	1	19.7	1.4
145	1	7231123012	DOS EQUIS SPC LAGER 12P BTL	1.0	2	1	9.7	1.4
146	1	7231163012	DOS EQUIS SPEC 6P BTL	1.0	4	1	18.7	1.5
147	1	85998900516	GPH OTHERSIDE IPA 6PK	1.0	4	1	18.7	1.5
148	1	85998900522	GPH SEASONAL 6PK	1.0	4	1	18.1	1.6
149	1	85114800500	GSB BLOOD ORANGE ALE 6PK	1.0	4	1	20.4	1.4
236	1	68174521122	BLUE PT VARIETY 12PK	1.0	2	1	8.4	1.7
237	1	68174511112	BLUE PT TOASTED LAGER 6PK BTL	1.0	4	1	20.9	1.3
238	1	68174511118	BLUE PT SEASONAL 6PK	1.0	4	1	7.8	3.6
239	1	68174511102	BLUE PT HOPTICAL ILL 6PK BTL	1.0	4	1	12.7	2.2
240	1	68174511130	BLUE PT BLUEBRY 6PK BTL	1.0	4	1	14.0	2.0
241	1	1820020069	BUD AMBER LAGER 6PK	9999999...	4	1	6.0	4.6
242	2	1820011047	BUD12PK CANS	4.0	8	2	8.2	6.8
243	1	1820000016	BUD BEER 6PK CAN 12OZ	1.0	4	2	12.6	2.2
244	1	1820000834	BUD LN 6P BTL	1.0	4	1	11.0	2.5
245	2	1820053047	BUD LT 12PK CANS	4.0	8	2	9.8	5.7

## PLANOGRAM BACKING TABLE

246	1	1820000106	BUD LIGHT 6PK CAN 12OZ	1.0	4	2	12.3	2.3
247	1	1820000833	BUD LT LN 6P BTL	1.0	4	1	11.8	2.4
248	2	7199000048	COORS LT 12PK CAN	4.0	8	2	7.3	7.6
249	1	7199030125	Coors Light 12/8C	2.0	4	2	0.0	0.0
250	1	7199030104	COORS LIGHT ALUM PINT 9PBTL	1.0	2	1	9.0	1.6
251	1	7199030005	COORS LT LN 6PK BTL	1.0	4	1	11.8	2.4
252	1	7199000008	COORS LT BEER 6PK CAN	1.0	4	2	12.9	2.2
253	1	3410017505	MILLER GEN LONG 6PKBTL	1.0	4	1	8.4	3.3
254	1	3410057023	MILLER LITE ALUM PINT 9P	1.0	2	1	7.6	1.9
255	1	3410057636	MILLER LT FRIDGE PK 12PK	2.0	4	2	13.6	2.1
256	1	8992433567	YUENGLING GLDN PILSNER 6P	1.0	4	1	19.3	1.5
257	1	8992433125	YUENGLING GLDN PLSNR 12PK	1.0	2	1	10.9	1.3
258	1	8992427898	YEUNGLING LAGER 12 CAN	1.0	2	1	7.0	2.0
259	1	8992427891	YUENGLING LAGER 6PK BTL	1.0	4	1	11.0	2.5
260	1	8992495432	YUENGLING BLCK AND TAN 6P	1.0	4	1	14.3	2.0
261	1	1820020133	Natural Light Naturdays 12/12C	1.0	2	1	0.0	0.0
262	1	7143934450	ROLL ROCK 12PK CAN	1.0	2	1	8.8	1.6
263	1	2210000412	Pabst Easy 12/12C	1.0	2	1	0.0	0.0
264	1	2210000170	PABST 12PK CANS	1.0	2	1	5.6	2.5
265	1	2210000289	PABST 6PK BTL	1.0	4	1	18.7	1.5
266	1	3410001505	MILLER HIGH LIFE 6PK BTL	1.0	4	1	14.1	2.0

Segment #2 : Shelf #2      DEPTH: 20 in    WIDTH: 528 in    DISTANCE FROM TOP OF BASE SHELF TO BOTTOM OF SHELF: 35.00 in

POS	# FAC	UPC	NAME	CASES	CAPACITY	UNITS HIGH	DOS	MVMT
22	1	3410051681	Cape Line Variety Pack 12/12C SC	1.0	2	1	0.0	0.0
23	1	3354400013	Corona Refresca Variety Pack 12/12C SC	1.0	2	1	0.0	0.0
24	1	1820020130	Ritas Spritz Variety Pack 12/12C SC	1.5	3	1	0.0	0.0
25	1	81062803026	Golden Road Spk Agua Fresca Vty 12/12...	1.5	3	1	0.0	0.0
26	1	1820019987	BUD LIME-A-RITA 8OZ 12PK CANS	1.0	2	1	8.4	1.7
27	1	68474640046	CLUBTAILS VTY 8PK 16OZ	9999999...	2	1	4.7	3.0
28	1	63598526042	MIKES HARDER VARIETY 8PK	9999999...	2	1	7.7	1.8
29	1	63598506744	MIKES BERRY 6PK BTL	1.0	4	1	6.8	4.1
30	1	63598510062	MIKES HARD LEMONADE 6PK BTL	1.0	4	1	9.1	3.1
31	1	63598522413	MIKES STRWBRY LEMONADE 6P	1.0	4	1	9.3	3.0
32	1	63598506074	MIKES SEASONAL 6P BTL	1.0	4	1	7.9	3.5
33	1	4257204412	SCHOFFERHOFER 12PK CANS	9999999...	2	1	7.3	1.9
34	1	4257204006	SCHOFFERHOFER GRPFRT 6PK	1.0	4	1	10.9	2.6
35	1	8205410454	WARSTEINER 6PK BTL	0.8	3	1	18.8	1.1
36	1	8839400002	SPATEN PREMIUM LAGER 6PK	0.8	3	1	13.5	1.6
37	1	8015761194	PAULANER HEFE WEIZEN 6PK	0.8	3	1	21.0	1.0
38	1	18195400002	PERONI NASTRO ASSURRO 6P BTL	0.8	3	1	5.8	3.6
39	1	69861402126	Dragon Stout 6/12B	1.0	4	1	0.0	0.0
40	1	79871322008	Carib Shandy Sorrell 6/12B	0.8	3	1	0.0	0.0
41	1	85595600013	Prestige Lager 6/12B	0.8	3	1	0.0	0.0
42	1	8382056793	RED STRIPE 6PK BTL	0.8	3	1	9.1	2.3
110	1	8382018132	GUINNESS BLONDE AMER 6PK	0.8	3	1	9.7	2.2
111	1	8382012393	GUINNESS STOUT 6PK BTL	0.8	3	1	3.6	5.8
112	1	8382010401	GUINNESS DRAUGHT 6PK BTL	1.0	4	1	7.5	3.7
113	1	8382012360	GUINNESS PUB DRGT 4P C	0.5	3	1	4.6	4.6
114	1	76227481393	BODDINGTONS ALE 4PK CAN	0.5	3	1	13.6	1.5
115	1	8760010115	CARLSBERG LAGER 4PK	0.5	3	1	12.6	1.7
116	1	2050700011	BITBURGER 16OZ CANS 4P	0.5	3	1	11.0	1.9
117	1	81601402080	SOUTHERN TIER OVERPACKD 15P CA	1.0	2	2	12.7	1.1
118	1	9999900050	Saranac 100 12/12C	1.0	2	1	0.0	0.0
119	1	0946808164	SARANAC TRAIL MIX 12PK BTL	0.5	1	1	4.7	1.5
120	1	8378337521	SIERRA NEV PALE 6P BTL	0.8	3	1	10.9	1.9
121	1	8378333100	SIERRA NEVADA TORPEDO 6PK	0.8	3	1	10.5	2.0
122	1	75452700024	NEW BELG FAT TIRE 12PK BT	1.0	2	1	8.4	1.7
123	1	75452700022	NEW BELG FAT TIRE 6PK BTL	0.8	3	1	13.6	1.5
124	1	75452700066	NEW BELG VOODOO 6PK BT	0.8	3	1	14.9	1.4
125	1	79603061493	KONA ISLAND VARIETY 12PK	0.5	1	1	5.0	1.4
126	1	79603082496	KONA BIG WAVE 12PK CAN	1.0	2	1	9.9	1.4
127	1	79603011496	KONA BIG WAVE 6PK	0.8	3	1	9.2	2.3
128	1	79603031499	KONA SEASONAL 6PK	9999999...	3	1	10.5	2.0

## PLANOGRAM BACKING TABLE

129	1	4182700076	HARPOON IPA 6PK BTL	0.8	3	1	16.2	1.3
130	1	4182700012	HARPOON MIX PACK 12PK BTL	1.0	2	1	8.0	1.8
204	1	73692011132	GOOSE ISL IPA 6PK BTL	0.8	3	1	17.2	1.2
205	1	73692011824	Goose Island Next Coast IPA 6/12B	0.8	3	1	0.0	0.0
206	1	3061300056	BKLYN SUMMER CAN 12PK	9999999...	2	1	9.3	1.5
207	1	3061300071	BKLYN VAR 2/12PK	1.0	2	1	9.3	1.5
208	1	3061300001	BKLYN LAGER 6P BTL	0.8	3	1	10.2	2.0
209	1	3061300053	BKLYN WINTER ALE 6PK	0.8	3	1	10.2	2.0
210	1	3061301951	BKLYN BEL AIR SOUR 6PK BT	9999999...	3	1	14.4	1.5
211	1	1820017991	SHOCK TOP VARIETY 12-PACK	1.0	2	1	9.0	1.6
212	1	1820015981	SHOCK TOP 12PK BOTTLE	1.0	2	1	7.5	1.9
213	1	1820013986	SHOCK TOP 6PK	0.8	3	1	11.8	1.8
214	1	7199009554	BLUE MOON VARIETY PK 12PK	0.5	1	1	4.0	1.8
215	1	7199009511	BLUE MOON ALE 6PK BTL	1.0	4	1	7.2	3.9
216	1	7199009532	BLUE MOON SEASONAL ALE 6	1.0	4	1	17.7	1.6
217	1	3410051607	LEINENKUGEL SMMR SHNDY 12P	0.5	1	1	4.3	1.6
218	1	3410051605	LEINENKUGEL SMMR SHNDY 6PK	0.8	3	1	7.9	2.7
219	1	3410078658	LEINENKUGEL GRAPFRUIT SHA 6PK	0.8	3	1	12.4	1.7
220	1	1820012998	LAND SHARK 12PK	1.0	2	1	10.5	1.3
221	1	1820020139	Bud Light Lemon Tea 12/12B	1.0	2	1	0.0	0.0
222	1	1820020140	Bud Light Lemon Tea 6/12B	0.8	3	1	0.0	0.0
223	1	1820020080	BUD LT ORANGE 12PK BOTTLE	1.0	2	1	6.7	2.1
224	1	1820020079	BUD LT ORANGE 6PK BTL	0.8	3	1	6.5	3.2
225	1	1820014990	BUD LIGHT LIME 12PK	1.0	2	1	7.6	1.8
226	1	1820015983	BUD LT LIME 12PK CAN	1.5	3	1	10.3	2.0
227	1	1820014991	BUD LIGHT LIME 6PK BTL	0.8	3	1	10.9	1.9
228	1	1820018992	BUD LT PLATINUM 12PK BTL	1.0	2	1	8.9	1.6
229	1	1820018993	BUD LT PLATINUM 6PK BTL	0.8	3	1	13.7	1.5
230	1	8248812700	BECKS N/A 6P BTL	1.0	4	1	7.4	3.8
231	1	4257205715	CLAUSTHALER 6PK	0.8	3	1	6.4	3.3
232	1	7289000621	Heineken 0.0 6/12B	1.0	4	1	0.0	0.0
233	1	1820002992	ODOULS N/A AMBER 6PK BTL	0.8	3	1	10.7	2.0
234	1	1820000784	ODOULS NA 6P BTL	0.8	3	1	5.8	3.6
235	1	1820079047	ODOULS NA 12P CAN	1.0	2	1	11.2	1.3

Segment #2 : Shelf #1 DEPTH: 22 in WIDTH: 528 in DISTANCE FROM TOP OF BASE SHELF TO BOTTOM OF SHELF: 47.00 in

POS	# FAC	UPC	NAME	CASES	CAPACITY	UNITS HIGH	DOS	MVMT
1	1	8769200149	ANGRY ORCH GRN APL 6PK	1.0	4	1	10.8	2.6
2	1	8769282102	ANGRY ORCH CRISP APPLE 6P	1.0	4	1	5.9	4.7
3	1	8769200660	ANGRY ORCH ROSE CIDER 6PK	1.0	4	1	4.5	6.2
4	1	8834510201	STRONGBOW ROSE CIDER 6PK	1.0	4	1	11.4	2.5
5	1	8834510151	STRONGBOW GOLD CIDER 6PK BTL	1.0	4	1	11.5	2.4
6	1	8834510225	Strongbow Variety Pack 12/8.5C	2.0	4	2	0.0	0.0
7	1	86043100080	VIRTUE CIDER ROSE 6PK CAN	9999999...	2	1	6.5	2.2
8	1	64499613860	WOLFFER ROSE CIDER DRY 4P BTL	9999999...	2	1	5.7	2.5
9	1	1820020132	Stella Artois Spritzer 6/12C	0.8	3	1	0.0	0.0
10	1	1820024001	STELLA CIDRE 6PK	1.0	4	1	11.9	2.4
11	1	8769200877	Wild Leaf Blk Lemon Honeyskl Tea 6/12B	1.0	4	1	0.0	0.0
12	1	8769283102	TWISTED TEA LEM 6P BTL	1.0	4	1	14.2	2.0
13	1	84980600223	John Dalys Half & Half 6/12C	0.8	3	1	0.0	0.0
14	1	61300874833	ARNOLDPALMERSPIKEDHALF&HALF6... 9999999...	3	1	1	0.0	0.0
15	1	8200072385	SMIRNOFF ICE 6PK BTL	1.0	4	1	11.1	2.5
16	1	8200072754	SMIRNOFF TWST V RASP 6P BTL	1.0	4	1	10.6	2.6
17	1	63027946506	VICTORY GOLDEN MONKEY 6PK	1.0	4	1	20.4	1.4
18	1	64286080031	Founders Solid Gold 12/12C	1.0	2	1	0.0	0.0
19	1	64286020007	FOUNDERS DIRTY BSTRD 6P	1.0	4	1	21.4	1.3
20	1	72383000020	LAGUNITAS LIL SUMPIN ALE 6PK	1.0	4	1	17.8	1.6
21	1	72383000009	LAGUNITAS IPA 6PK	1.0	4	1	16.6	1.7
85	1	63848900029	DOGFISH HEAD 60 MIN 6PK	1.0	4	1	22.4	1.3
86	1	74052210083	BELLS TWO-HEARTED 6P	1.0	4	1	28.0	1.0
87	1	78624311990	FLYING DOG RAGING 6PK	1.0	4	1	19.0	1.5
88	1	79837312602	MAGIC HAT #9 6PK BTL	1.0	4	1	15.9	1.8
89	1	8769200848	Samuel Adams Boston 262 Marathon 12/1...	1.5	3	1	0.0	0.0
90	1	8769210012	SAM ADAMS LAGER 6PK BTL	1.0	4	1	13.2	2.1



## PLANOGRAM BACKING TABLE

91	1	8769230050	SAM ADAMS SEASONAL 6P BTL	1.0	4	1	7.3	3.8
92	1	8769200004	SAM ADAMS CRYSPALE ALE 6PK	1.0	4	1	12.1	2.3
93	1	8769227102	SAM ADAMS CHRY WHT 6P BTL	1.0	4	1	12.8	2.2
94	1	8769200673	SAM76 6 PK CAN	1.0	4	2	17.6	1.6
95	1	89785300293	CIGAR CITY JAI ALA 6PK	1.0	4	2	17.2	1.6
96	1	64286015024	FOUNDERS ALL DAY 6PK CANS	1.0	4	2	20.0	1.4
97	1	64286015031	FOUNDERS SOLID GOLD 6PK C	1.0	4	2	28.0	1.0
98	1	63848900193	Dogfish Head SeaQuenchAle 6/12C	1.0	4	2	0.0	0.0
99	1	85961200103	21st Brew Free or Die IPA 6/12C	1.0	4	2	0.0	0.0
100	1	3061300030	Brooklyn Lager 6/12C	1.0	4	2	0.0	0.0
101	1	3061311212	BKLYN DEFENDER IPA 6PK	0.5	2	1	10.1	1.4
102	1	88715100094	CONEY ISLAND MERMAID 6PKS	0.5	2	1	8.9	1.6
103	1	85909300243	SIXPOINT BENGALI TIGER IPA 6P	0.8	3	1	17.5	1.2
104	1	85909300246	SIXPOINT RESIN 6PK CANS	0.8	3	1	11.2	1.9
105	1	86273700002	MONTAUK DRIFTWOOD 6PK	1.0	4	2	15.0	1.9
106	1	86273700006	MONTAUK SEASONAL 6PK	1.0	4	2	9.1	3.1
107	1	86907100027	MONTAUK WAVE CHASER 6PK	1.0	4	2	10.0	2.8
108	1	86273700007	MONTAUK SESS IPA 6PK	1.0	4	2	17.5	1.6
109	1	86907100026	MONTAUK WATERMELON 6PK	1.0	4	2	7.6	3.7
167	1	68174500215	Blue Point The IPA 6/12C	1.0	4	2	0.0	0.0
168	1	68174500208	Blue Point Shore Thing 6/12C	1.0	4	2	0.0	0.0
169	1	68174500068	Blue Point Beach Plum Gose 6/12C	1.0	4	2	0.0	0.0
170	1	85114900424	LI CELTIC ALE 6PK CAN	9999999...	2	1	11.2	1.3
171	1	85114900415	LONG IRELAND SNL 6PK CAN	9999999...	2	1	6.4	2.2
172	2	8066095641	CORONA 24OZ BTL	1.2	14	1	18.5	5.3
173	2	7289000478	HEINEKEN 22OZ BOTTLE	1.2	14	1	25.1	3.9
174	2	78615000057	STELLA ARTOIS 22.4 OZ BTL	0.9	14	1	18.7	5.2
175	2	8248800006	BECKS 22OZ BOMBER	1.2	14	1	24.3	4.0
176	2	72383001192	Lagunitas IPA 1/19C	0.7	16	1	0.0	0.0
177	2	64286013024	FOUNDERS ALL DAY 19.2OZ C	0.7	16	1	16.7	6.7
178	2	64286013031	Founders Solid Gold 1/19C	0.7	16	1	0.0	0.0
179	1	8760010139	CARLSBERG 1LT CAN	9999999...	2	1	3.9	3.6
180	2	7089701331	FOSTERS 25OZ CAN	1.0	12	1	4.4	19.1
181	2	7289000119	HEINEKEN 24OZ CAN	1.2	14	1	13.3	7.4
182	2	78615000170	STELLA ARTOIS 19.2OZ CAN	0.7	16	1	17.3	6.5
183	2	8066095643	CORONA 24OZ CAN	1.2	14	1	23.2	4.2
184	2	8066095721	MODELO 24OZ CAN	1.2	14	1	27.5	3.6
185	2	63598524583	MIKES HARDER LEMONADE 23.5OZ C	1.2	14	1	21.6	4.5
186	2	63598525884	MIKES HARDER BLACK CHRY 23.5	1.2	14	1	25.5	3.9
187	2	8769283231	TWISTED TEA 24OZ CAN	1.2	14	1	18.6	5.3
188	1	1820021985	BUD 3PK 25OZ CAN	1.4	7	1	7.5	6.5
189	2	1820025000	BUD 25OZ CAN	0.9	14	1	12.1	8.1
190	1	1820021986	BUD LT 3PK 25OZ	1.4	7	1	11.8	4.2
191	2	1820025001	BUD LT 25OZ CAN	0.9	14	1	22.7	4.3
192	1	7199030120	COORS LIGHT 3PK 24OZ CAN	1.4	7	1	9.8	5.0
193	2	7199030065	COORS LT 24OZ CAN	1.2	14	1	11.4	8.6
194	2	3410000355	MILLER LITE 24OZ CAN	1.2	14	1	39.2	2.5
195	2	8992460024	YUENGLING LAGER 24OZ CAN	0.9	14	1	17.9	5.5
196	2	68907661175	NARRAGANSETT 24Z	1.2	14	1	37.3	2.6
197	3	1820025013	NATTY DADDY 25OZ CAN	1.4	21	1	4.9	29.9
198	2	1820025008	NATTY ICE 25OZ CAN	0.9	14	1	7.1	13.8
199	2	1820025002	NATURAL LT 25OZ CAN	0.9	14	1	13.0	7.5
200	2	7199047712	KEYSTONE ICE 24OZ CAN	1.2	14	1	14.1	7.0
201	5	1820025006	BUD ICE 25OZ CAN	2.3	35	1	3.8	65.3
202	5	7199010071	COORS BANQUET 24OZ CAN	2.9	35	1	3.4	71.4
203	2	3410000005	MILLER HIGH LIFE 24 OZ CA	1.2	14	1	21.6	4.5

SKUs on Planogram: 295