



UNAUTHORIZED ITEMS

	Check Digit UPC	Barcode	Name	Manufacturer	Status
1	68174500090	6 81745 00090 8	BLUE POINT CITRUS PLUNGE IPA 4/16 CAN	ANHEUSER-BUSCH IN BEV ...	MAINTAINED
2	68174500048	6 81745 00048 9	BLUE POINT HAZY BASTARD 4/16 CAN	ANHEUSER-BUSCH IN BEV ...	MAINTAINED
3	85389700226	8 53897 00226 4	BON AND VIV SPIKED SELTZER CAPE COD CRANBE...	ANHEUSER-BUSCH IN BEV ...	MAINTAINED
4	73692011833	7 36920 11833 3	GOOSE ISLAND NEXT COAST IPA 4/16 CAN	ANHEUSER-BUSCH IN BEV ...	MAINTAINED
5	01820020133	0 18200 20133 2	NATURDAYS 12/12 CAN	ANHEUSER-BUSCH IN BEV ...	ADDED
6	07143900601	0 71439 00601 7	ROLLING ROCK 1/25 CAN	ANHEUSER-BUSCH IN BEV ...	ADDED
7	78615000170	7 86150 00170 7	STELLA ARTOIS 1/19.2 CAN	ANHEUSER-BUSCH IN BEV ...	MAINTAINED
8	78615000057	7 86150 00057 1	STELLA ARTOIS 1/22 BTL	ANHEUSER-BUSCH IN BEV ...	ADDED
9	63848900333	6 38489 00333 7	DOG FISH HEAD LIQUID TRUTH SERUM IPA 4/16 CAN	BOSTON BEER COMPANY ...	MAINTAINED
10	08769200951	0 87692 00951 1	TRULY WILD BERRY 1/24 CAN	BOSTON BEER COMPANY ...	ADDED
11	08066000004	0 80660 00004 6	MODELO ESPECIAL 1/12 BTL	CONSTELLATION BRANDS ...	MAINTAINED
12	08834510220	0 88345 10220 7	STRONGBOW DRY CIDER 4/16.9 CAN	HEINEKEN BROUWERIJEN ...	MAINTAINED
13	71925600013	7 19256 00013 8	LONG TRAIL AMBER ALE 1/19.2 CAN	LONG TRAIL BREWING CO. I...	ADDED
14	71925600074	7 19256 00074 9	LONG TRAIL TRAIL HOPPER IPA 1/19.2 CAN	LONG TRAIL BREWING CO. I...	ADDED
15	63598500021	6 35985 00021 1	WHITE CLAW 70 PINEAPPLE 6/12 BOX	MARK ANTHONY INTERNA...	ADDED
16	63598550004	6 35985 50004 9	WHITE CLAW NATURAL LIME 1/12 CAN	MARK ANTHONY INTERNA...	MAINTAINED
17	63598550002	6 35985 50002 5	WHITE CLAW RUBY GRAPEFRUIT 1/12 CAN	MARK ANTHONY INTERNA...	MAINTAINED
18	04182770113	0 41827 70113 8	ARCTIC SUMMER SPIKED VARIETY THE DAY TRIPP...	MASS BAY BREWING CO	ADDED
19	07199000014	0 71990 00014 1	COORS HARD SELTZER BLK CHERRY 1/24 CAN	MILLERCOORS LLC	ADDED



UNAUTHORIZED ITEMS

	Check Digit UPC	Barcode	Name	Manufacturer	Status
20	07199000015	0 71990 00015 8	COORS HARD SELTZER VARIETY 12/12 CAN	MILLERCOORS LLC	ADDED
21	07199030104	0 71990 30104 0	COORS LIGHT 9/16 BTL (AL)	MILLERCOORS LLC	ADDED
22	03410000323	0 34100 00323 4	REDDS WICKED 1/24 CAN	MILLERCOORS LLC	ADDED
23	07825000328	0 78250 00328 7	STEEL RESERVE 211 1/24 CAN	MILLERCOORS LLC	ADDED
24	03410001232	0 34100 01232 8	VIZZY VARIETY 12/12 CAN (A)	MILLERCOORS LLC	ADDED
25	06206704942	0 62067 04942 2	LABATT BLUE LIGHT 12/12 CAN	NORTH AMERICAN BREWE...	ADDED
26	03061300030	0 30613 00030 2	BROOKLYN LAGER 6/12 CAN	REMAINING DOMESTIC	ADDED
27	81760601076	8 17606 01076 6	CAPTAIN LAWRENCE HOP COMMANDER 6/12 CAN	REMAINING DOMESTIC	ADDED
28	08176060107	0 81760 60107 2	CAPTAIN LAWRENCE NEW ENGLAND IPA 4/12 CAN	REMAINING DOMESTIC	MAINTAINED
29	74169000013	7 41690 00013 9	COOPERSTOWN VARIETY 12/12 BTL	REMAINING DOMESTIC	MAINTAINED
30	78624311991	7 86243 11991 3	FLYING DOG RAGING BITCH 1/12 BTL	REMAINING DOMESTIC	MAINTAINED
31	64286015064	6 42860 15064 0	FOUNDERS UNRAVELED JUICY IPA 6/12 CAN	REMAINING DOMESTIC	ADDED
32	79837330141	7 98373 30141 0	MAGIC HAT EASY MILES 6/12 CAN	REMAINING DOMESTIC	ADDED
33	60155799248	6 01557 99248 2	NORTHWAY SUNRISE SESSION IPA 4/16 CAN	REMAINING DOMESTIC	MAINTAINED
34	01996250504	0 19962 50504 1	PARADOX BEAVER BITE IPA 4/16 CAN	REMAINING DOMESTIC	MAINTAINED
35	01497450006	0 14974 50006 0	WOODCHUCK AMBER 1/12 CAN	REMAINING DOMESTIC	MAINTAINED
36	01497480006	0 14974 80006 1	WOODCHUCK GRANNY SMITH 1/12 CAN	REMAINING DOMESTIC	MAINTAINED
37	01497421005	0 14974 21005 1	WOODCHUCK OUT ON A LIMB CHOCOLATE RASPB...	REMAINING DOMESTIC	MAINTAINED
38	08378337535	0 83783 37535 0	SIERRA NEVADA BFD 1/19.2 CAN	SIERRA NEVADA BREWING...	MAINTAINED



UNAUTHORIZED ITEMS

	Check Digit UPC	Barcode	Name	Manufacturer	Status
39	08378322856	0 83783 22856 4	SIERRA NEVADA FANTASTIC HAZE IPA 6/12 CAN	SIERRA NEVADA BREWING...	ADDED
40	08378337539	0 83783 37539 8	SIERRA NEVADA HOP BULLET DOUBLE IPA 1/19.2 C...	SIERRA NEVADA BREWING...	ADDED
41	63625174079	6 36251 74079 4	ARROGANT BASTARD ALE 4/16 CAN	STONE BREWING CO	MAINTAINED

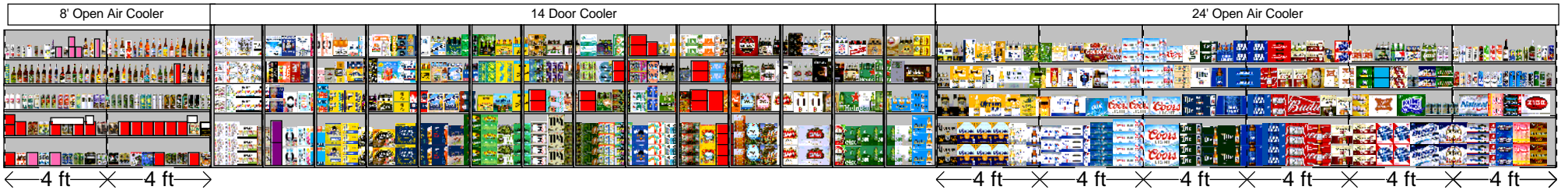


Cooler Size: 60 ft

Store Cluster: Downstate Crafty Beer

Address: 138 ULSTER AVE

SAUGERTIES , NY



Cooler Size: 60 ft

Address: 138 ULSTER AVE

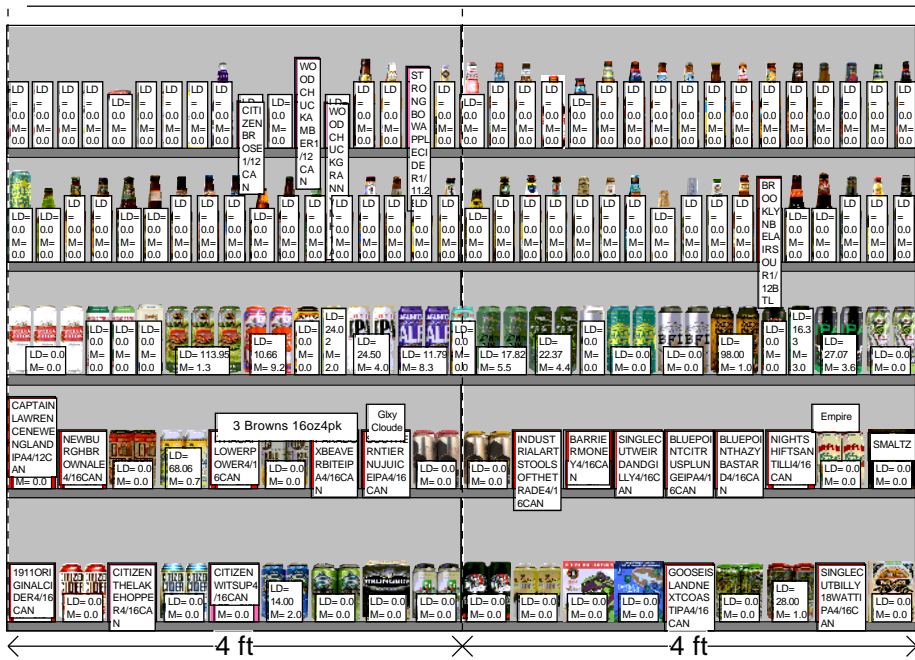
SAUGERTIES, NY

Shelf Schematic Report

*Includes all shelves in the planogram

PRICE CHOPP... Store # 193 H: 5 ft 6.00 in W: 60 ft D: 2 ft 7.00 in # of segments: 22

8' Open Air Cooler



Name: 1_1	W:96.00 in	D:19.00 in	Avail Space: 13.63 in	Ht Space: 15.00 in		
UPC	Name	MVT	LDOS	Sold L8 Weeks	Authorized	#WKS
63598550001	WHITE CLAW BLACK CHERRY 1/ 12 CAN	0.0	0.0		APPROVED	0
63598526035	WHITE CLAW RASPBERRY 1/ 12 CAN	0.0	0.0		APPROVED	0
63598550002	WHITE CLAW RUBY GRAPEFRUIT 1/ 12 CAN	0.0	0.0			0
63598550004	WHITE CLAW NATURAL LIME 1/ 12 CAN	0.0	0.0			0
8769200677S	TRULY WILD BERRY 1/12 CAN	0.0	0.0		APPROVED	0
85389700224	BON AND VIV SPIKED SELTZER INDIAN RIVER GRAPEF...	0.0	0.0		APPROVED	0
85389700226	BON AND VIV SPIKED SELTZER CAPE COD CRANBERR...	0.0	0.0			0
85389700242S	BON AND VIV SPIKED SELTZER BLACK CHERRY 1/ 12 C...	0.0	0.0		APPROVED	0
3410000397	HENRYS HARD GRAPE 1/12 BTL	0.0	0.0		APPROVED	0
85919900322S	CITIZEN BROSE 1/ 12 CAN	0.0	0.0		APPROVED	0
1497421005S	WOODCHUCK OUT ON A LIMB CHOCOLATE RASPBERR...	0.0	0.0			0
1497450006	WOODCHUCK AMBER 1/ 12 CAN	0.0	0.0			0
1497480006S	WOODCHUCK GRANNY SMITH 1/ 12 CAN	0.0	0.0			0
79844900210	ACE PEAR 1/ 12 BTL	0.0	0.0		APPROVED	0
1820025100	STELLA ARTOIS CIDRE 1/ 12 BTL	0.0	0.0		APPROVED	0
8834510197	STRONGBOW APPLE CIDER 1/ 11.2 BTL	0.0	0.0		APPROVED	0
8834510150	STRONGBOW GOLD 1/ 11.2 BTL	0.0	0.0		APPROVED	0
8769200659S	ANGRY ORCHARD ROSE 1/ 12 BTL	0.0	0.0		APPROVED	0
8769282100	ANGRY ORCHARD CRISP APPLE 1/ 12 BTL	0.0	0.0		APPROVED	0
78615000037	HOEGAARDEN WHITE 1/ 11.2 BTL	0.0	0.0		APPROVED	0
8002000008	ABITA HARVEST STRAWBERRY LAGER 1/ 12 BTL	0.0	0.0		APPROVED	0
8002000005	ABITA PURPLE HAZE 1/ 12 BTL	0.0	0.0		APPROVED	0
8769200003	SAMUEL ADAMS PORCH ROCKER 1/ 12 BTL	0.0	0.0		APPROVED	0
8769227100	SAMUEL ADAMS CHERRY WHEAT ALE 1/ 12 BTL	0.0	0.0		APPROVED	0
8780000073	BLUE MOON BELGIAN WHITE 1/ 12 BTL	0.0	0.0		APPROVED	0
7199009560	BLUE MOON MANGO WHEAT 1/ 12 BTL	0.0	0.0		APPROVED	0
3410000774	LEINIES SEASONAL PRIMARY 1/ 12 BTL	0.0	0.0		APPROVED	0
3410000381	LEINIES GRAPEFRUIT SHANDY 1/ 12 BTL	0.0	0.0		Approved	0
1820000867	SHOCK TOP BELGIAN WHITE 1/ 12 BTL	0.0	0.0		APPROVED	0
79837300002	MAGIC HAT 9 NOT QUITE PALE ALE 1/ 12 BTL	0.0	0.0		APPROVED	0
79393679168	ELLCOTTVILLE BLUEBERRY 1/ 12 BTL	0.0	0.0		APPROVED	0
83305300200	LAKE PLACID UBU 1/ 12 BTL	0.0	0.0		APPROVED	0
68174511111	BLUE POINT TOASTED LAGER 1/ 12 BTL	0.0	0.0		APPROVED	0
8769200005	SAMUEL ADAMS BOSTON LAGER 1/ 12 BTL	0.0	0.0		APPROVED	0

Name: 1_2	W:96.00 in	D:19.00 in	Avail Space: 12.48 in	Ht Space: 11.00 in		
UPC	Name	MVT	LDOS	Sold L8 Weeks	Authorized	#WKS
8378311009	SIERRA NEVADA HAZY LITTLE THING IPA 1/ 12 CAN	0.0	0.0		APPROVED	0
8378300005	SIERRA NEVADA PALE ALE 1/ 12 BTL	0.0	0.0		APPROVED	0
64944099817	OMMEGANG NIRVANA IPA 1/ 12 BTL	0.0	0.0		APPROVED	0
68174511101	BLUE POINT HOPTICAL ILLUSION IPA 1/ 12 BTL	0.0	0.0		APPROVED	0
81760601019	CAPTAIN LAWRENCE IPA 1/ 12 BTL	0.0	0.0		APPROVED	0
74052210081	BELLS TWO HEARTED ALE 1/ 12 BTL	0.0	0.0		APPROVED	0
78624311991	FLYING DOG RAGING BITCH 1/ 12 BTL	0.0	0.0			0
78624311178	FLYING DOG SNAKE DOG 1/ 12 BTL	0.0	0.0		APPROVED	0
78624311102	FLYING DOG DOGGIE STYLE 1/ 12 BTL	0.0	0.0		APPROVED	0
72383000010	LAGUNITAS IPA 1/ 12 BTL	0.0	0.0		APPROVED	0
72383000021	LAGUNITAS LITTLE SUMPIN 1/ 12 BTL	0.0	0.0		APPROVED	0
73692011131	GOOSE ISLAND IPA 1/ 12 BTL	0.0	0.0		APPROVED	0
85375900011	SOUTHERN TIER IPA 1/ 12 BTL	0.0	0.0		APPROVED	0
4182700007	HARPOON IPA 1/ 12 BTL	0.0	0.0		APPROVED	0

Cooler Size: 60 ft

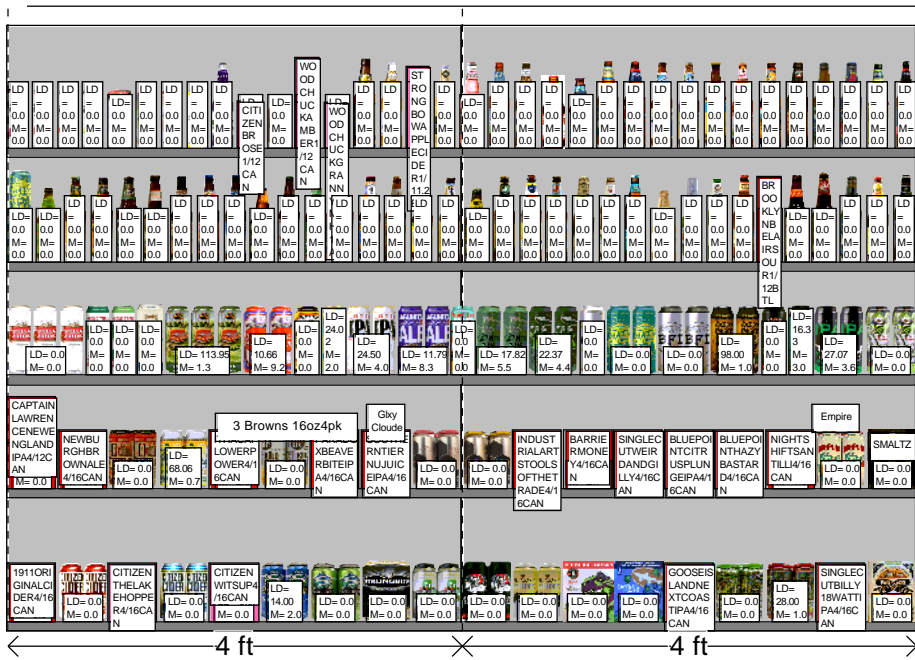
Address: 138 ULSTER AVE

SAUGERTIES, NY

Shelf Schematic Report

*Includes all shelves in the planogram

8' Open Air Cooler



79556310009	SMUTTYNOSE FINESTKIND IPA 1/12 BTL	0.0	0.0	APPROVED	0
74052210061	BELLS SEASONAL 1/12 BTL (B)	0.0	0.0	APPROVED	0
4182700014	HARPOON SEASONAL 1/12 BTL	0.0	0.0	APPROVED	0
0015000003	SIERRA NEVADA SEASONAL 1/12 BTL (A)	0.0	0.0	APPROVED	0
3020000613	BROOKLYN LAGER 1/12 BTL	0.0	0.0	APPROVED	0
8769230053	SAMUEL ADAMS SEASONAL 1/12 BTL (A)	0.0	0.0	APPROVED	0
3061300050	BROOKLYN SEASONAL 1/12 BTL	0.0	0.0	APPROVED	0
78615000031	LEFFE BLONDE 1/11.2 BTL	0.0	0.0	APPROVED	0
7231113001	PILSNER URQUELL 1/11.2 BTL	0.0	0.0	APPROVED	0
79603021496	KONA BIG WAVE GOLDEN ALE 1/12 BTL	0.0	0.0	APPROVED	0
8066000004	MODELO ESPECIAL 1/12 BTL	0.0	0.0		0
78615000005	STELLA ARTOIS 1/11.2 BTL	0.0	0.0	APPROVED	0
18195400001	PERONI 1/11.2 BTL	0.0	0.0	APPROVED	0
79603021494	KONA LONGBOARD 1/12 BTL	0.0	0.0	APPROVED	0
30613019505	BROOKLYN BEL AIR SOUR 1/12 BTL	0.0	0.0	APPROVED	0
74543218100	BRECKENRIDGE VANILLA PORTER 1/12 BTL	0.0	0.0	APPROVED	0
30600000013	BROOKLYN BROWN ALE 1/12 BTL	0.0	0.0	APPROVED	0
89968800030	KEEGAN MOTHERS MILK 1/12 BTL	0.0	0.0	APPROVED	0
8857333100	SHINER BOCK 1/12 BTL	0.0	0.0	APPROVED	0
8382018101	GUINNESS DRAUGHT STOUT 1/11.2 BTL	0.0	0.0	APPROVED	0

Name: 1_3	W:96.00 in	D:19.00 in	Avail Space: 4.82 in	Ht Space: 11.00 in		
UPC	Name	MVT	LDOS	Sold L8 Weeks	Authorized	#WKS
78615000170	STELLA ARTOIS 1/19.2 CAN	0.0	0.0			0
71925600013	LONG TRAIL AMBER ALE 1/19.2 CAN	0.0	0.0			0
71925600074	LONG TRAIL TRAIL HOPPER IPA 1/19.2 CAN	0.0	0.0			0
64286013031	FOUNDERS SOLID GOLD 1/19.2 CAN	0.0	0.0		APPROVED	0
64286013024	FOUNDERS ALL DAY SESSION IPA 1/19.2 CAN	1.3	113....		APPROVED	17
81994200016	OSKAR BLUES DALES 1/19.2 CAN	9.2	10.66	Sold	Approved	26
81994200017	OSKAR BLUES MAMAS LITTLE YELLA PILS 1/19.2 CAN	0.0	0.0		APPROVED	0
81994200024	OSKAR BLUES ONE Y 1/19.2 CAN	2.0	24.02	Sold	Approved	26
72383001192	LAGUNITAS IPA 1/19.2 CAN	4.0	24.50	Sold	APPROVED	1
72383019247	LAGUNITAS 12TH OF NEVER ALE 1/19.2 CAN	8.3	11.79	Sold	APPROVED	26
72383019245	LAGUNITAS SUMPIN EASY 1/19.2 CAN	0.0	0.0		APPROVED	0
63848900307	DOGFISH HEAD SEAQUENCH ALE 1/19.2 CAN	5.5	17.82	Sold	APPROVED	26
63848900306	DOGFISH HEAD 60 MINUTE IPA 1/19.2 CAN	4.4	22.37	Sold	APPROVED	26
8378337539	SIERRA NEVADA HOP BULLET DOUBLE IPA 1/19.2 CAN	0.0	0.0			0
8378337550	SIERRA NEVADA HAZY LITTLE THING IPA 1/19.2 CAN	0.0	0.0		APPROVED	0
8378337535	SIERRA NEVADA BFD 1/19.2 CAN	0.0	0.0			0
75452700905	NEW BELGIUM VOOODOO RANGER IPA 1/19.2 CAN	1.0	98.00	Sold	APPROVED	1
63625174209	ARROGANT BASTARD ALE 1/19.2 CAN	0.0	0.0		APPROVED	0
75452701021	NEW BELGIUM VOOODOO RANGER IMPERIAL IPA 1/19.2 ...	3.0	16.33	Sold	APPROVED	1
63625174211	STONE IPA 1/19.2 CAN	3.6	27.07	Sold	APPROVED	26
85146400357	REVOLUTION ANTI HERO 1/19.2 CAN	0.0	0.0		APPROVED	0

Name: 1_4	W:96.00 in	D:19.00 in	Avail Space: 2.40 in	Ht Space: 11.00 in		
UPC	Name	MVT	LDOS	Sold L8 Weeks	Authorized	#WKS
8176060107	CAPTAIN LAWRENCE NEW ENGLAND IPA 4/12 CAN	0.0	0.0			0
86326700001	NEWBURGH BROWN ALE 4/16 CAN	0.0	0.0		Approved	0
86326700000	NEWBURGH CREAM ALE 4/16 CAN	0.0	0.0		Approved	0
86326700005	NEWBURGH MEGA BOSS 4/16 CAN	0.7	68.06		APPROVED	25
60690500870	ITHACA FLOWER POWER 4/16 CAN	2.0	10.50	Sold	APPROVED	1
85155900701	MILLHOUSE KOLD ONE 4/16 CAN	0.0	0.0		APPROVED	0
1996250504	PARADOX BEAVER BITE IPA 4/16 CAN	0.0	0.0			0
81601402048	SOUTHERN TIER NU JUICE IPA 4/16 CAN	0.0	0.0		APPROVED	0

Cooler Size: 60 ft

Address: 138 ULSTER AVE

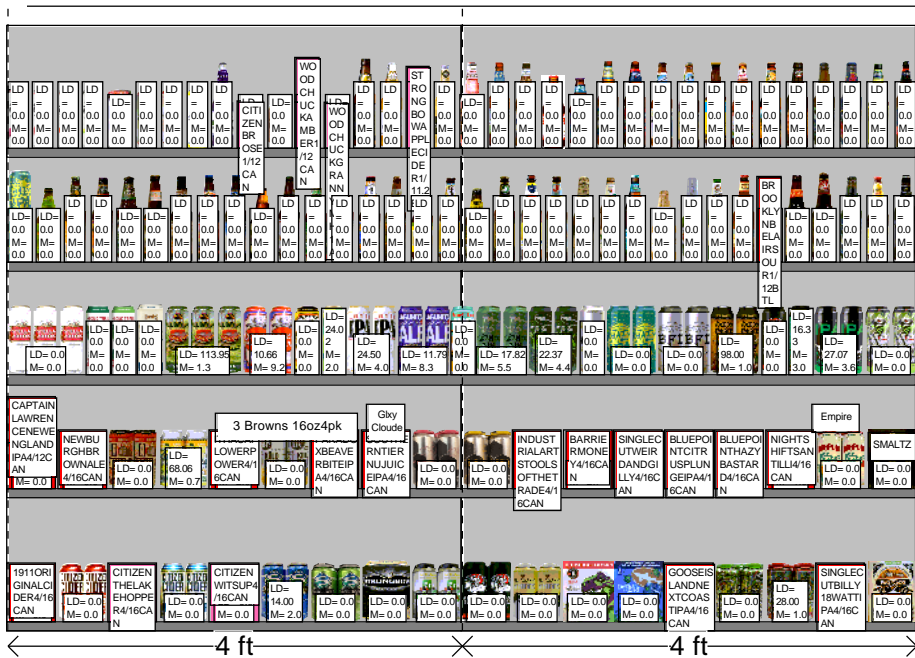
SAUGERTIES, NY

Shelf Schematic Report

*Includes all shelves in the planogram

86810100036	INDUSTRIAL ARTS WRENCH IPA 4/ 16 CAN	0.0	0.0		APPROVED	0
86810100031	INDUSTRIAL ARTS METRIC PILS 4/ 16 CAN	0.0	0.0		APPROVED	0
86810100035	INDUSTRIAL ARTS TOOLS OF THE TRADE 4/ 16 CAN	0.0	0.0		APPROVED	0
73079248864	BARRIER MONEY 4/ 16 CAN	2.7	7.84	Sold	APPROVED	25
78742186074	SINGLECUT WEIRD AND GILLY 4/ 16 CAN	0.0	0.0		APPROVED	0
68174500090	BLUE POINT CITRUS PLUNGE IPA 4/ 16 CAN	0.0	0.0			0
68174500048	BLUE POINT HAZY BASTARD 4/ 16 CAN	0.0	0.0			0
69685929239	NIGHT SHIFT SANTILLI 4/ 16 CAN	1.0	21.00	Sold	APPROVED	1
4182700337	HARPOON REC LEAGUE 4/ 16 CAN	0.0	0.0		Approved	0
85654400742	LORD HOBO BOOM SAUCE 4/ 16 CAN	0.0	0.0		Approved	0

8' Open Air Cooler



UPC	Name	MVT	LDOS	Sold L8 Weeks	Authorized	#WKS
64855894528	1911 ORIGINAL CIDER 4/ 16 CAN	0.0	0.0		Approved	0
85919900307	CITIZEN UNIFIED PRESS 4/ 16 CAN	0.0	0.0		APPROVED	0
85919900332	CITIZEN THE LAKE HOPPER 4/ 16 CAN	0.0	0.0		APPROVED	0
85919900313	CITIZEN THE DIRTY MAYOR 4/ 16 CAN	0.0	0.0		APPROVED	0
85919900315	CITIZEN WITS UP 4/ 16 CAN	0.0	0.0		APPROVED	0
85320500435	SWITCHBACK ALE 4/ 16 CAN	2.0	14.00	Sold	APPROVED	1
85320500437	SWITCHBACK IPA 4/ 16 CAN	0.0	0.0		Approved	0
8834510220	STRONGBOW DRY CIDER 4/ 16.9 CAN	0.0	0.0			0
65334188339	KNEE DEEP BREAKING BUD 4/ 16 CAN	0.0	0.0		Approved	0
63625174079	ARROGANT BASTARD ALE 4/ 16 CAN	0.0	0.0			0
60367510177	ALLAGASH WHITE 4/ 16 CAN	0.0	0.0		APPROVED	0
85221100332	TOPPLING GOLIATH PSEUDOSUE 4/ 16 CAN	0.0	0.0		APPROVED	0
63848900333	DOG FISH HEAD LIQUID TRUTH SERUM IPA 4/ 16 CAN	0.0	0.0			0
73692011833	GOOSE ISLAND NEXT COAST IPA 4/ 16 CAN	0.0	0.0			0
64090118962	PIPEWORKS LIZARD KING 4/ 16 CAN	0.0	0.0		APPROVED	0
64090118924	PIPEWORKS NINJA VS UNICORN 4/ 16 CAN	1.0	28.00	Sold	APPROVED	1
64102253637	SINGLECUT BILLY 18 WATT IPA 4/ 16 CAN	0.0	0.0		Approved	0
81957801050	TWO ROADS ROAD 2 RUIN 4/ 16 CAN	0.0	0.0		APPROVED	0

Cooler Size: 60 ft

Address: 138 ULSTER AVE

SAUGERTIES, NY

Shelf Schematic Report

*Includes all shelves in the planogram

PRICE CHOPP... Store # 193 H: 5 ft 6.00 in W: 60 ft D: 2 ft 7.00 in # of segments: 22

Name: 9_1	W:336.00 in	D:22.00 in	Avail Space: 2.38 in		Ht Space: 14.00 in	
UPC	Name	MVT	LDOS	Sold L8 Weeks	Authorized	#WKS
63598520025	WHITE CLAW BLACK CHERRY 6/ 12 CAN	5.1	8.27	Sold	APPROVED	26
63598526087	WHITE CLAW MANGO 6/ 12 CAN	9.0	4.67	Sold	APPROVED	26
63598580006	WHITE CLAW VARIETY 12/ 12 CAN (NO2)	0.0	0.0		APPROVED	0
8769200678	TRULY WILD BERRY 6/12 CAN	3.1	9.09	Sold	APPROVED	26
7199000015	COORS HARD SELTZER VARIETY 12/ 12 CAN	0.0	0.0			0
85389700227	BON AND VIV SPIKED SELTZER VARIETY 12/ 12 CAN	9.0	2.32	Sold	APPROVED	26
3354400043	CORONA SELTZER VARIETY 12/ 12 CAN (A)	0.0	0.0		APPROVED	0

Name: 9_2	W:336.00 in	D:22.00 in	Avail Space: 2.42 in		Ht Space: 11.00 in	
UPC	Name	MVT	LDOS	Sold L8 Weeks	Authorized	#WKS
63598526066	WHITE CLAW RASPBERRY 6/ 12 CAN	0.0	0.0		APPROVED	0
63598520028	WHITE CLAW RUBY GRAPEFRUIT 6/ 12 CAN	1.4	30.43	Sold	Approved	26
63598510033	WHITE CLAW MANGO 12/ 12 CAN	0.0	0.0		APPROVED	0
63598500021	WHITE CLAW 70 PINEAPPLE 6/ 12 BOX	0.0	0.0			0
8769200991	TRULY LEMONADE VARIETY 12/ 12 CAN	0.0	0.0		Approved	0
3410001232	VIZZY VARIETY 12/ 12 CAN (A)	0.0	0.0			0
85531000806	CROOK AND MARKER PARTY PACK 8/ 12 CAN	0.0	0.0		APPROVED	0
85531000827	CROOK AND MARKER ZERO GUILT VARIETY 8/ 12 CAN	0.0	0.0		APPROVED	0

Name: 9_3	W:336.00 in	D:22.00 in	Avail Space: 3.50 in		Ht Space: 13.00 in	
UPC	Name	MVT	LDOS	Sold L8 Weeks	Authorized	#WKS
63598526089	WHITE CLAW BLACK CHERRY 12/ 12 CAN	6.7	4.16	Sold	APPROVED	26
63598502598	WHITE CLAW NATURAL LIME 6/ 12 CAN	2.7	15.67	Sold	APPROVED	25
8769200804	TRULY VARIETY TROPICAL 12/ 12 CAN (SLEEK)	8.3	5.08	Sold	APPROVED	26
8769200686	TRULY VARIETY BERRY 12/ 12 CAN (SLEEK)	0.0	0.0		APPROVED	0
85389700231	BON AND VIV SPIKED SELTZER INDIAN RIVER GRAPEF...	2.8	19.93	Sold	APPROVED	26
1820020217	BUD LIGHT SELTZER VARIETY REMIX 12/ 12 CAN	0.0	0.0		APPROVED	0
4182770113	ARCTIC SUMMER SPIKED VARIETY THE DAY TRIPPER ...	0.0	0.0			0

Name: 9_4	W:336.00 in	D:29.00 in	Avail Space: 1.92 in		Ht Space: 24.00 in	
UPC	Name	MVT	LDOS	Sold L8 Weeks	Authorized	#WKS
63598554890	WHITE CLAW VARIETY 12/ 12 CAN (ORIGINAL)	34.0	3.71	Sold	Approved	26
8769200424	TRULY VARIETY CITRUS 12/ 12 CAN (SLEEK)	9.1	9.25	Sold	APPROVED	26
8200078142	SMIRNOFF SPIKED SPARKLING SELTZER VARIETY 12/ ...	2.5	22.05	Sold	APPROVED	26
85389700251	BON AND VIV SPIKED SELTZER COASTAL VARIETY 12/ ...	2.6	15.97	Sold	APPROVED	8
1820020208	BUD LIGHT SELTZER VARIETY 12/ 12 CAN	0.0	0.0		APPROVED	0
4182770112	ARCTIC SUMMER SPIKED VARIETY THE WEEKENDER ...	4.9	11.48	Sold	APPROVED	24



Cooler Size: 60 ft

Address: 138 ULSTER AVE

SAUGERTIES, NY

Shelf Schematic Report

*Includes all shelves in the planogram

PRICE CHOPP... Store # 193 H: 5 ft 6.00 in W: 60 ft D: 2 ft 7.00 in # of segments: 22

Name: 9_1		W:336.00 in	D:22.00 in	Avail Space: 2.38 in		Ht Space: 14.00 in	
UPC	Name	MVT	LDOS	Sold L8 Weeks	Authorized	#WKS	
1820020180	NATURAL LIGHT SELTZER CATALINA LIME MIXER 12/ 1...	0.0	0.0		APPROVED	0	
1820020179	NATURAL LIGHT SELTZER VARIETY 12/ 12 CAN	0.0	0.0		APPROVED	0	
3410098916	HENRYS HARD ORANGE 6/ 12 BTL	0.0	0.0		APPROVED	0	
3354495067	CORONA REFRESCA GUAVA LIME 6/ 12 CAN	1.6	13.13	Sold	APPROVED	10	
3354400013	CORONA VARIETY REFRESCA 12/ 12 CAN	3.7	5.69	Sold	APPROVED	26	
8200072908	SMIRNOFF ICE VARIETY 12/ 11.2 BTL	1.4	9.86	Sold	APPROVED	24	
1820022989	BUD LIGHT LIME MANG-O-RITA 12/ 8 CAN	1.5	14.19	Sold	APPROVED	25	
8769200497	SAMUEL ADAMS 76 12/ 12 CAN	0.0	0.0		APPROVED	0	

Name: 9_2		W:336.00 in	D:22.00 in	Avail Space: 2.42 in		Ht Space: 11.00 in	
UPC	Name	MVT	LDOS	Sold L8 Weeks	Authorized	#WKS	
4182770022	ARCTIC SUMMER SPIKED RUBY RED GRAPEFRUIT 6/ 1...	0.0	0.0		APPROVED	0	
1820020132	STELLA ARTOIS SPRITZER 6/ 12 CAN	1.7	12.07	Sold	APPROVED	23	
61300875220	ARNOLD PALMER SPIKED HALF AND HALF 12/ 12 CAN	3.3	6.33	Sold	APPROVED	25	
8769283102	TWISTED TEA ORIGINAL 6/ 12 BTL	2.5	11.02	Sold	APPROVED	26	
63598526042	MIKES HARDER VARIETY 8/ 16 CAN	1.6	17.07	Sold	APPROVED	25	
8043280290	SEAGRAMS ESCAPES VARIETY 12/ 11.2 BTL	2.2	9.42	Sold	APPROVED	26	
8769200673	SAMUEL ADAMS 76 6/ 12 CAN	3.2	17.78	Sold	APPROVED	26	

Name: 9_3		W:336.00 in	D:22.00 in	Avail Space: 3.50 in		Ht Space: 13.00 in	
UPC	Name	MVT	LDOS	Sold L8 Weeks	Authorized	#WKS	
3410051680	CAPE LINE VARIETY 6/ 12 CAN	2.6	21.37	Sold	APPROVED	26	
8769275134	TWISTED TEA HALF AND HALF 12/ 12 CAN	2.6	10.85	Sold	APPROVED	26	
8769283138	TWISTED TEA ORIGINAL 18/ 12 CAN	1.5	9.33	Sold	APPROVED	16	
63598506744	MIKES HARD BLACK CHERRY LEMONADE 6/ 11.2 BTL	3.0	9.33	Sold	APPROVED	26	
63598510062	MIKES HARD LEMONADE 6/ 11.2 BTL	3.0	9.46	Sold	APPROVED	26	
8769200109	SAMUEL ADAMS SEASONAL 12/ 12 CAN	0.0	0.0		APPROVED	0	

Name: 9_4		W:336.00 in	D:29.00 in	Avail Space: 1.92 in		Ht Space: 24.00 in	
UPC	Name	MVT	LDOS	Sold L8 Weeks	Authorized	#WKS	
3410051681	CAPE LINE VARIETY 12/ 12 CAN	1.5	36.36	Sold	APPROVED	26	
8769283103	TWISTED TEA ORIGINAL 12/ 12 BTL	2.4	11.76	Sold	APPROVED	26	
8769283134	TWISTED TEA ORIGINAL 12/ 12 CAN	2.8	20.22	Sold	APPROVED	26	
63598512001	MIKES HARD LEMONADE 12/ 11.2 BTL	2.0	20.59	Sold	APPROVED	26	
63598512998	MIKES HARD VARIETY 12/ 11.2 BTL	3.0	13.82	Sold	APPROVED	25	
8769201103	SAMUEL ADAMS SEASONAL 12/ 12 BTL (A)	11.0	3.83	Sold	APPROVED	26	



Cooler Size: 60 ft

Address: 138 ULSTER AVE

SAUGERTIES, NY

Shelf Schematic Report

*Includes all shelves in the planogram

PRICE CHOPP... Store # 193 H: 5 ft 6.00 in W: 60 ft D: 2 ft 7.00 in # of segments: 22

Name: 9_1		W:336.00 in	D:22.00 in	Avail Space: 2.38 in		Ht Space: 14.00 in	
UPC	Name	MVT	LDOS	Sold L8 Weeks	Authorized	#WKS	
7199009592	BLUE MOON LIGHT SKY 12/ 12 CAN	0.0	0.0		APPROVED	0	
7199009561	BLUE MOON MANGO WHEAT 6/ 12 BTL	1.8	15.47	Sold	APPROVED	26	
63625174002	STONE DELICIOUS IPA 6/ 12 BTL	1.9	14.58	Sold	APPROVED	26	
63625174094	STONE IPA 12/ 12 CAN	1.3	21.21	Sold	APPROVED	25	
63625188901	STONE VARIETY 12/ 12 BTL	1.0	14.00	Sold	APPROVED	26	
8378322822	SIERRA NEVADA SEASONAL 6/ 12 BTL	2.2	12.56	Sold	Approved	26	
3410051605	LEINIES SEASONAL PRIMARY 6/ 12 BTL	2.5	11.38	Sold	APPROVED	26	

Name: 9_2		W:336.00 in	D:22.00 in	Avail Space: 2.42 in		Ht Space: 11.00 in	
UPC	Name	MVT	LDOS	Sold L8 Weeks	Authorized	#WKS	
8769230050	SAMUEL ADAMS SEASONAL 6/ 12 BTL (A)	4.3	6.44	Sold	APPROVED	26	
7199009554	BLUE MOON BREWMASTER VARIETY 12/ 12 BTL	1.5	9.59	Sold	APPROVED	26	
7199009511	BLUE MOON BELGIAN WHITE 6/ 12 BTL	4.8	5.82	Sold	APPROVED	26	
75452700022	NEW BELGIUM FAT TIRE 6/ 12 BTL	2.5	11.02	Sold	APPROVED	26	
8378311010	SIERRA NEVADA HAZY LITTLE THING IPA 6/ 12 CAN	5.0	11.29	Sold	APPROVED	26	
8378322856	SIERRA NEVADA FANTASTIC HAZE IPA 6/ 12 CAN	0.0	0.0			0	
3410051607	LEINIES SEASONAL PRIMARY 12/ 12 BTL	5.4	5.20	Sold	APPROVED	24	

Name: 9_3		W:336.00 in	D:22.00 in	Avail Space: 3.50 in		Ht Space: 13.00 in	
UPC	Name	MVT	LDOS	Sold L8 Weeks	Authorized	#WKS	
8769200129	SAMUEL ADAMS REBEL IPA 12/ 12 BTL	1.2	11.76	Sold	APPROVED	26	
7199009516	BLUE MOON BELGIAN WHITE 12/ 12 BTL	5.9	4.73	Sold	APPROVED	26	
75452700161	NEW BELGIUM FAT TIRE 12/ 12 CAN	2.2	13.02	Sold	APPROVED	26	
8378322812	SIERRA NEVADA SEASONAL 12/ 12 BTL	1.3	10.77	Sold	APPROVED	23	
8378316000	SIERRA NEVADA 4 WAY IPA VARIETY 12/ 12 BTL	2.3	6.17	Sold	APPROVED	26	
3410051607	LEINIES SEASONAL PRIMARY 12/ 12 BTL	5.4	5.20	Sold	APPROVED	24	

Name: 9_4		W:336.00 in	D:29.00 in	Avail Space: 1.92 in		Ht Space: 24.00 in	
UPC	Name	MVT	LDOS	Sold L8 Weeks	Authorized	#WKS	
8769229103	SAMUEL ADAMS VARIETY 12/ 12 BTL	2.0	14.29	Sold	APPROVED	26	
8769210014	SAMUEL ADAMS BOSTON LAGER 12/ 12 BTL	6.3	4.44	Sold	APPROVED	26	
75452700024	NEW BELGIUM FAT TIRE 12/ 12 BTL	3.5	8.00	Sold	APPROVED	26	
8378367504	SIERRA NEVADA TORPEDO IPA 12/ 12 BTL	4.8	8.81	Sold	APPROVED	26	
8378337512	SIERRA NEVADA PALE ALE 12/ 12 BTL	4.0	10.50	Sold	APPROVED	26	
73692011180	GOOSE ISLAND IPA 12/ 12 BTL	0.8	33.73	Sold	APPROVED	23	



Cooler Size: 60 ft

Address: 138 ULSTER AVE

SAUGERTIES, NY

Shelf Schematic Report

*Includes all shelves in the planogram

14 Door Cooler



PRICE CHOPP... Store # 193 H: 5 ft 6.00 in W: 60 ft D: 2 ft 7.00 in # of segments: 22

Name: 9_1		W:336.00 in	D:22.00 in	Avail Space: 2.38 in		Ht Space: 14.00 in	
UPC	Name	MVT	LDOS	Sold L8 Weeks	Authorized	#WKS	
85961200103	21ST AMENDMENT BREW FREE OR DIE 6/ 12 CAN	2.5	22.05	Sold	APPROVED	26	
72383010001	LAGUNITAS HOP STOOPID 6/ 12 BTL	1.3	22.05	Sold	APPROVED	26	
72383000009	LAGUNITAS IPA 6/ 12 BTL	2.5	11.38	Sold	APPROVED	26	
73698358259	PEAK ORGANIC FRESH CUT 6/ 12 CAN	2.9	19.18	Sold	APPROVED	26	
8002042230	ABITA PURPLE HAZE 6/ 12 BTL	1.5	18.67	Sold	APPROVED	26	
75643501237	OTTER CREEK FREE FLOW IPA 12/ 12 CAN	0.9	31.82	Sold	APPROVED	26	

Name: 9_2		W:336.00 in	D:22.00 in	Avail Space: 2.42 in		Ht Space: 11.00 in	
UPC	Name	MVT	LDOS	Sold L8 Weeks	Authorized	#WKS	
85689500374	GOLDEN ROAD WOLF PUP SESSION 15/ 12 CAN	1.4	10.14	Sold	APPROVED	26	
72383030047	LAGUNITAS 12TH OF NEVER ALE 12/ 12 CAN	2.3	12.33	Sold	APPROVED	26	
74052210083	BELLS TWO HEARTED ALE 6/ 12 BTL	2.7	10.57	Sold	APPROVED	26	
64286015024	FOUNDERS ALL DAY SESSION IPA 6/ 12 CAN	2.7	20.82	Sold	APPROVED	26	
70277008401	OMISSION ULTIMATE LIGHT 6/ 12 CAN	1.2	45.16	Sold	APPROVED	25	
79837330141	MAGIC HAT EASY MILES 6/ 12 CAN	0.0	0.0			0	

Name: 9_3		W:336.00 in	D:22.00 in	Avail Space: 3.50 in		Ht Space: 13.00 in	
UPC	Name	MVT	LDOS	Sold L8 Weeks	Authorized	#WKS	
73692011926	GOOSE ISLAND SO-LO IPA 15/ 12 CAN	0.0	0.0		APPROVED	0	
72383010045	LAGUNITAS SUMPIN EASY 12/ 12 CAN	5.6	5.02	Sold	APPROVED	26	
78624311990	FLYING DOG RAGING BITCH 6/ 12 BTL	1.7	16.57	Sold	APPROVED	26	
64286015064	FOUNDERS UNRAVELED JUICY IPA 6/ 12 CAN	0.0	0.0			0	
63848900029	DOGFISH HEAD 60 MINUTE IPA 6/ 12 BTL	4.0	7.00	Sold	APPROVED	26	
79837330095	MAGIC HAT VARIETY 15/ 12 CAN	2.3	6.01	Sold	APPROVED	24	

Name: 9_4		W:336.00 in	D:29.00 in	Avail Space: 1.92 in		Ht Space: 24.00 in	
UPC	Name	MVT	LDOS	Sold L8 Weeks	Authorized	#WKS	
73692011651	GOOSE ISLAND IPA 15/ 12 CAN	5.3	10.55	Sold	APPROVED	26	
72383021212	LAGUNITAS IPA 12/ 12 CAN	2.0	28.00	Sold	APPROVED	3	
72383010009	LAGUNITAS IPA 12/ 12 BTL	11.2	3.74	Sold	APPROVED	26	
64286090024	FOUNDERS ALL DAY SESSION IPA 15/ 12 CAN	7.3	7.62	Sold	APPROVED	26	
63848900189	DOGFISH HEAD 60 MINUTE IPA 12/ 12 CAN	2.4	23.73	Sold	APPROVED	25	
63123467112	SWEETWATER HIGH LIGHT LO CAL EASY IPA 1/ 12 CAN	1.0	56.00	Sold	Approved	1	
79837330085	MAGIC HAT IPA PLATLIST 15/ 12 CAN	2.4	23.53	Sold	APPROVED	26	

Cooler Size: 60 ft

Address: 138 ULSTER AVE

SAUGERTIES, NY

Shelf Schematic Report

*Includes all shelves in the planogram

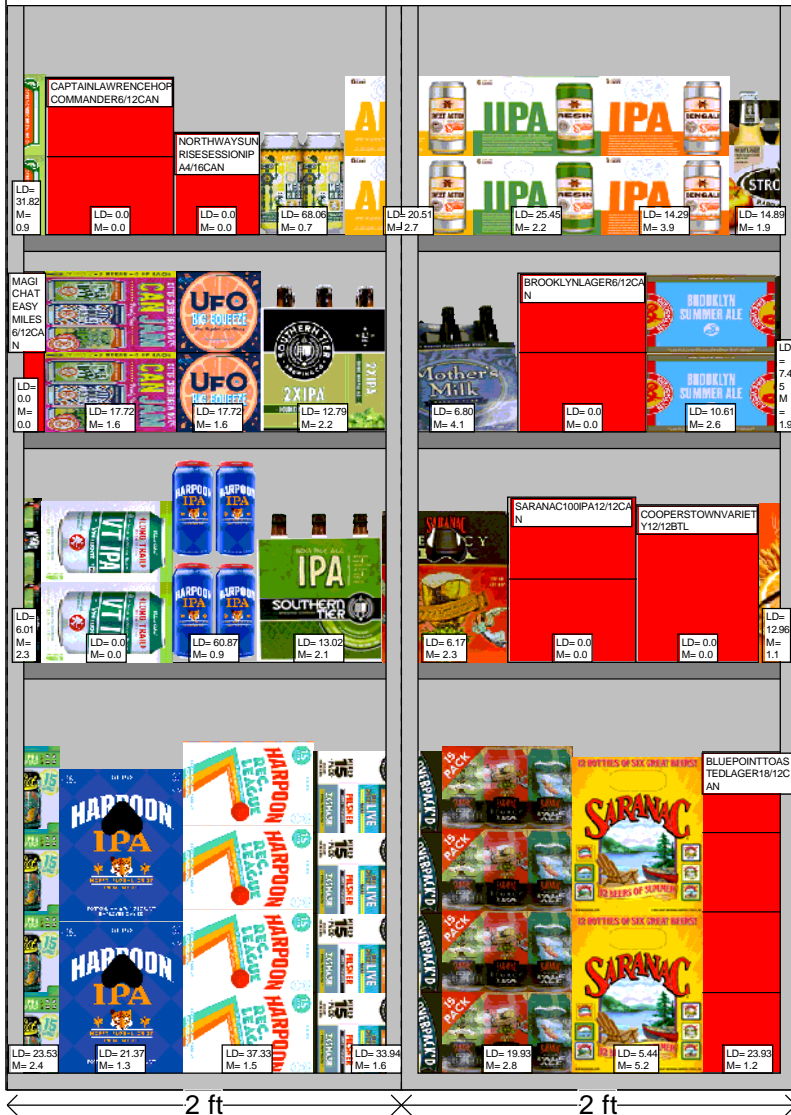
PRICE CHOPP... Store # 193 H: 5 ft 6.00 in W: 60 ft D: 2 ft 7.00 in # of segments: 22

Name: 9_1		W:336.00 in	D:22.00 in	Avail Space: 2.38 in		Ht Space: 14.00 in	
UPC	Name	MVT	LDOS	Sold L8 Weeks	Authorized	#WKS	
81760601076	CAPTAIN LAWRENCE HOP COMMANDER 6/ 12 CAN	0.0	0.0				0
60155799248	NORTHWAY SUNRISE SESSION IPA 4/ 16 CAN	0.0	0.0				0
86326700005	NEWBURGH MEGA BOSS 4/ 16 CAN	0.7	68.06		APPROVED		25
85909300242	SIXPOINT SWEET ACTION 6/ 12 CAN	2.7	20.51	Sold	APPROVED		26
85909300246	SIXPOINT RESIN IIPA 6/ 12 CAN	2.2	25.45	Sold	APPROVED		25
85909300243	SIXPOINT BENGALI IPA 6/ 12 CAN	3.9	14.29	Sold	APPROVED		26
8834510198	STRONGBOW ARTISAN BLEND 6/ 11.2 BTL	1.9	14.89	Sold	APPROVED		26

Name: 9_2		W:336.00 in	D:22.00 in	Avail Space: 2.42 in		Ht Space: 11.00 in	
UPC	Name	MVT	LDOS	Sold L8 Weeks	Authorized	#WKS	
75643501211	OTTER CREEK VARIETY 12/ 12 CAN	1.6	17.72	Sold	Approved		26
4182790083	HARPOON UFO BIG SQUEEZE 6/ 12 CAN	1.6	17.72	Sold	APPROVED		24
85375900027	SOUTHERN TIER 2XIPA 6/ 12 BTL	2.2	12.79	Sold	APPROVED		26
89968800031	KEEGAN MOTHERS MILK 6/ 12 BTL	4.1	6.80	Sold	APPROVED		26
3061300030	BROOKLYN LAGER 6/ 12 CAN	0.0	0.0				0
3061300056	BROOKLYN SUMMER ALE 12/ 12 CAN	2.6	10.61	Sold	APPROVED		22

Name: 9_3		W:336.00 in	D:22.00 in	Avail Space: 3.50 in		Ht Space: 13.00 in	
UPC	Name	MVT	LDOS	Sold L8 Weeks	Authorized	#WKS	
71925600199	LONG TRAIL GREEN MOUNTAIN VT IPA 12/ 12 CAN	0.0	0.0		APPROVED		0
4182700077	HARPOON IPA 4/ 16 CAN	0.9	60.87				25
85375900012	SOUTHERN TIER IPA 6/ 12 BTL	2.2	13.02	Sold	APPROVED		26
0945001160	SARANAC IPA 12/ 12 BTL	2.3	6.17	Sold	APPROVED		26
7167009298	SARANAC 100 IPA 12/ 12 CAN	0.0	0.0		APPROVED		0
74169000013	COOPERSTOWN VARIETY 12/ 12 BTL	0.0	0.0				0

Name: 9_4		W:336.00 in	D:29.00 in	Avail Space: 1.92 in		Ht Space: 24.00 in	
UPC	Name	MVT	LDOS	Sold L8 Weeks	Authorized	#WKS	
4182700712	HARPOON IPA 12/ 12 BTL	1.3	21.37	Sold	APPROVED		26
4182700334	HARPOON REC LEAGUE 15/ 12 CAN	1.5	37.33	Sold	APPROVED		24
81601402080	SOUTHERN TIER OVERPACKD 15/ 12 CAN	1.7	33.94	Sold	APPROVED		26
0945011026	SARANAC VARIETY 15/ 12 CAN	2.8	19.93	Sold	Approved		26
7167007106	SARANAC 12 BEERS 12/ 12 BTL	5.2	5.44	Sold	APPROVED		26
68174500134	BLUE POINT TOASTED LAGER 18/ 12 CAN	1.2	23.93	Sold	APPROVED		24



Cooler Size: 60 ft

Address: 138 ULSTER AVE

SAUGERTIES, NY

Shelf Schematic Report

*Includes all shelves in the planogram

PRICE CHOPP... Store # 193 H: 5 ft 6.00 in W: 60 ft D: 2 ft 7.00 in # of segments: 22

Name: 9_1		W:336.00 in	D:22.00 in	Avail Space: 2.38 in		Ht Space: 14.00 in	
UPC	Name	MVT	LDOS	Sold L8 Weeks	Authorized	#WKS	
7199076400	KILLIANS IRISH RED 12/ 12 BTL	0.9	15.91	Sold	APPROVED	26	
8382012393	GUINNESS EXTRA STOUT 6/ 12 BTL	2.9	9.82	Sold	APPROVED	26	
8382010401	GUINNESS DRAUGHT STOUT 6/ 11.2 BTL	2.7	10.41	Sold	APPROVED	26	
8382012360	GUINNESS DRAUGHT STOUT 4/ 14.9 CAN	2.7	21.13	Sold	Approved	26	
8205480754	WARSTEINER OKTOBERFEST 6/ 11.2 BTL	1.8	15.38	Sold	APPROVED	11	
18195400115	PERONI 6/ 11.2 CAN	2.3	24.24	Sold	APPROVED	26	

Name: 9_2		W:336.00 in	D:22.00 in	Avail Space: 2.42 in		Ht Space: 11.00 in	
UPC	Name	MVT	LDOS	Sold L8 Weeks	Authorized	#WKS	
3061300071	BROOKLYN VARIETY 12/ 12 BTL	1.9	7.45	Sold	APPROVED	26	
1497480009	WOODCHUCK GRANNY SMITH 6/ 12 BTL	2.0	14.00	Sold	APPROVED	26	
8834510201	STRONGBOW ROSE 6/ 11.2 BTL	1.5	19.18	Sold	APPROVED	24	
1820023997	STELLA ARTOIS CIDRE 12/ 12 BTL	1.7	8.38	Sold	APPROVED	24	
78615000001	STELLA ARTOIS 6/ 11.2 BTL	8.4	4.99	Sold	APPROVED	26	
8382012368	GUINNESS DRAUGHT STOUT 8/ 14.9 CAN	2.9	9.72	Sold	APPROVED	26	

Name: 9_3		W:336.00 in	D:22.00 in	Avail Space: 3.50 in		Ht Space: 13.00 in	
UPC	Name	MVT	LDOS	Sold L8 Weeks	Authorized	#WKS	
1820015981	SHOCK TOP BELGIAN WHITE 12/ 12 BTL	1.1	12.96	Sold	APPROVED	26	
8769282102	ANGRY ORCHARD CRISP APPLE 6/ 12 BTL	4.0	7.00	Sold	APPROVED	26	
8769200660	ANGRY ORCHARD ROSE 6/ 12 BTL	4.3	6.56	Sold	APPROVED	26	
78615000014	STELLA ARTOIS 12/ 11.2 BTL	16.2	3.47	Sold	APPROVED	26	
78615000016	STELLA ARTOIS 12/ 11.2 CAN	6.9	6.13	Sold	APPROVED	26	
8205480451	WARSTEINER PREMIUM 12/ 11.2 BTL	1.2	11.76	Sold	APPROVED	26	

Name: 9_4		W:336.00 in	D:29.00 in	Avail Space: 1.92 in		Ht Space: 24.00 in	
UPC	Name	MVT	LDOS	Sold L8 Weeks	Authorized	#WKS	
1820028156	SHOCK TOP BELGIAN WHITE 15/ 12 CAN	1.7	24.28	Sold	APPROVED	26	
8769200033	ANGRY ORCHARD CRISP APPLE 12/ 12 BTL	3.0	9.33	Sold	APPROVED	26	
8769200017	ANGRY ORCHARD EXPLORER PACK 12/ 12 BTL	3.0	9.21	Sold	APPROVED	25	
78615000014	STELLA ARTOIS 12/ 11.2 BTL	16.2	3.47	Sold	APPROVED	26	
78615000149	STELLA ARTOIS 18/ 11.2 BTL	7.5	5.63	Sold	APPROVED	26	



Cooler Size: 60 ft

Address: 138 ULSTER AVE

SAUGERTIES, NY

Shelf Schematic Report

*Includes all shelves in the planogram

PRICE CHOPP... Store # 193 | H: 5 ft 6.00 in | W: 60 ft | D: 2 ft 7.00 in | # of segments: 22

Name: 9_1		W:336.00 in	D:22.00 in	Avail Space: 2.38 in		Ht Space: 14.00 in	
UPC	Name	MVT	LDOS	Sold L8 Weeks	Authorized	#WKS	
18195400002	PERONI 6/ 11.2 BTL	3.9	7.27	Sold	APPROVED	26	
8382056793	RED STRIPE LAGER 6/ 11.2 BTL	1.7	16.57	Sold	APPROVED	26	
8834510005	NEWCASTLE BROWN ALE 6/ 12 BTL	1.3	22.40	Sold	APPROVED	24	
7289010016	AMSTEL LIGHT 12/ 12 BTL	2.2	6.39	Sold	APPROVED	26	
78615000030	LEFFE BLONDE 6/ 11.2 BTL	2.3	11.91	Sold	APPROVED	26	
3354495031	PACIFICO 12/ 12 CAN	1.7	16.57	Sold	APPROVED	26	

Name: 9_2		W:336.00 in	D:22.00 in	Avail Space: 2.42 in		Ht Space: 11.00 in	
UPC	Name	MVT	LDOS	Sold L8 Weeks	Authorized	#WKS	
8382010403	GUINNESS DRAUGHT STOUT 12/ 11.2 BTL	1.9	7.45	Sold	APPROVED	26	
8205410454	WARSTEINER PREMIUM 6/ 11.2 BTL	2.6	10.69	Sold	APPROVED	26	
7289000011	HEINEKEN 6/ 12 BTL	3.7	7.67	Sold	APPROVED	26	
7289000020	HEINEKEN 12/ 12 CAN	2.9	9.72	Sold	APPROVED	26	
7289000188	HEINEKEN LIGHT 12/ 12 CAN	1.2	17.65	Sold	APPROVED	26	
8066095787	MODELO NEGRA 12/ 12 BTL	1.8	7.95	Sold	APPROVED	25	

Name: 9_3		W:336.00 in	D:22.00 in	Avail Space: 3.50 in		Ht Space: 13.00 in	
UPC	Name	MVT	LDOS	Sold L8 Weeks	Authorized	#WKS	
7289000016	HEINEKEN 12/ 12 BTL	13.9	3.53	Sold	APPROVED	26	
7289000159	HEINEKEN LIGHT 12/ 12 BTL	1.4	10.14	Sold	APPROVED	26	
7231123012	DOS EQUIS 12/ 12 BTL	1.7	8.28	Sold	APPROVED	26	
8066095765	MODELO ESPECIAL 6/ 12 BTL	2.6	8.02	Sold	APPROVED	26	
8066095715	MODELO ESPECIAL 12/ 12 CAN	5.7	4.89	Sold	APPROVED	26	

Name: 9_4		W:336.00 in	D:29.00 in	Avail Space: 1.92 in		Ht Space: 24.00 in	
UPC	Name	MVT	LDOS	Sold L8 Weeks	Authorized	#WKS	
8248812300	BECKS 12/ 12 BTL	5.3	5.27	Sold	APPROVED	26	
7289000016	HEINEKEN 12/ 12 BTL	13.9	3.53	Sold	APPROVED	26	
7289000152	HEINEKEN 18/ 12 BTL	4.5	6.28	Sold	APPROVED	26	
7289000423	HEINEKEN LIGHT 18/ 12 BTL	1.1	12.96	Sold	APPROVED	25	
8066095757	MODELO ESPECIAL 12/ 12 BTL	4.7	9.03	Sold	APPROVED	26	



Cooler Size: 60 ft

Address: 138 ULSTER AVE

SAUGERTIES, NY

Shelf Schematic Report

*Includes all shelves in the planogram

PRICE CHOPP... Store # 193 H: 5 ft 6.00 in W: 60 ft D: 2 ft 7.00 in # of segments: 22

Name: 19_1	W:240.00 in	D:18.50 in	Avail Space: 2.19 in		Ht Space: 17.00 in	
UPC	Name	MVT	LDOS	Sold L8 Weeks	Authorized	#WKS
8066095605	CORONA 6/ 12 BTL	7.2	4.90	Sold	APPROVED	26
8066095605	CORONA 6/ 12 BTL	7.2	4.90	Sold	APPROVED	26
8066095695	CORONA 12/ 12 CAN	2.2	6.36	Sold	APPROVED	25
8066095625	CORONA LIGHT 6/ 12 BTL	2.9	7.37	Sold	APPROVED	26
8066095621	CORONA LIGHT 12/ 12 CAN	2.1	6.60	Sold	APPROVED	26
3354495041	CORONA PREMIER 6/ 12 BTL	1.3	16.03	Sold	APPROVED	26
1820014991	BUD LIGHT LIME 6/ 12 BTL	1.3	15.91	Sold	APPROVED	25
1820015983	BUD LIGHT LIME 12/ 12 CAN	1.1	12.50	Sold	APPROVED	25
1820020082	MICHELOB ULTRA PURE GOLD 6/ 12 BTL	1.5	13.64	Sold	APPROVED	26
1820005989	MICHELOB ULTRA 6/ 12 BTL	3.0	6.91	Sold	APPROVED	26
6821302117	MOLSON GOLDEN 12/ 12 BTL	1.4	10.14	Sold	APPROVED	26
7199030005	COORS LIGHT 6/ 12 BTL	3.6	5.80	Sold	APPROVED	26

Name: 19_2	W:240.00 in	D:21.00 in	Avail Space: 0.24 in		Ht Space: 11.00 in	
UPC	Name	MVT	LDOS	Sold L8 Weeks	Authorized	#WKS
8066095401	CORONA 6/ 7 BTL	3.7	7.59	Sold	APPROVED	26
8066095675	CORONA LIGHT 12/ 12 BTL	6.6	4.26	Sold	APPROVED	26
3354495044	CORONA PREMIER 12/ 12 CAN	2.1	10.10	Sold	APPROVED	26
3354400018	CORONA PREMIER 18/ 12 BTL	2.1	6.60	Sold	APPROVED	25
1820014990	BUD LIGHT LIME 12/ 12 BTL	1.0	14.00	Sold	APPROVED	26
1820020083	MICHELOB ULTRA PURE GOLD 12/ 12 BTL	1.5	9.09	Sold	APPROVED	26
1820005990	MICHELOB ULTRA 12/ 12 BTL	2.2	6.51	Sold	APPROVED	26
1820006991	MICHELOB ULTRA 12/ 12 CAN	1.7	12.73	Sold	APPROVED	26
6821303117	MOLSON CANADIAN 12/ 12 BTL	1.0	14.00	Sold	APPROVED	26
7199030017	COORS LIGHT 18/ 12 CAN	10.9	5.13	Sold	APPROVED	26

Name: 19_3	W:288.00 in	D:21.00 in	Avail Space: 3.44 in		Ht Space: 12.00 in	
UPC	Name	MVT	LDOS	Sold L8 Weeks	Authorized	#WKS
8066095615	CORONA 12/ 12 BTL	24.5	3.43	Sold	APPROVED	26
8066095623	CORONA LIGHT 18/ 12 BTL	5.0	4.17	Sold	APPROVED	26
8066095623	CORONA LIGHT 18/ 12 BTL	5.0	4.17	Sold	APPROVED	26
1820012998	LANDSHARK 12/ 12 BTL	1.4	9.86	Sold	APPROVED	26
1820020080	BUD LIGHT ORANGE 12/ 12 BTL	1.1	12.50	Sold	APPROVED	25
1820096728	MICHELOB ULTRA 24/ 12 BTL	0.0	0.0		APPROVED	0
6206704942	LABATT BLUE LIGHT 12/ 12 CAN	0.0	0.0			0
7199030069	COORS LIGHT 12/ 12 BTL	5.4	5.20	Sold	APPROVED	26

Name: 19_4	W:288.00 in	D:31.00 in	Avail Space: 4.90 in		Ht Space: 22.00 in	
UPC	Name	MVT	LDOS	Sold L8 Weeks	Authorized	#WKS
8066095615	CORONA 12/ 12 BTL	24.5	3.43	Sold	APPROVED	26
8066095680	CORONA 18/ 12 BTL	12.8	4.93	Sold	APPROVED	26
3354495042	CORONA PREMIER 12/ 12 BTL	4.6	9.17	Sold	APPROVED	26
1820096624	MICHELOB ULTRA 18/ 12 BTL	5.2	5.35	Sold	APPROVED	26
1820096715	MICHELOB ULTRA 24/ 12 CAN	10.2	4.11	Sold	APPROVED	26
1820096721	MICHELOB ULTRA 18/ 12 CAN	5.2	16.31	Sold	APPROVED	26
6206704941	LABATT BLUE LIGHT 24/ 12 CAN	1.0	56.00	Sold	APPROVED	26
7199031600	COORS LIGHT 24/ 12 CAN	20.2	4.17	Sold	APPROVED	26



Cooler Size: 60 ft

Address: 138 ULSTER AVE

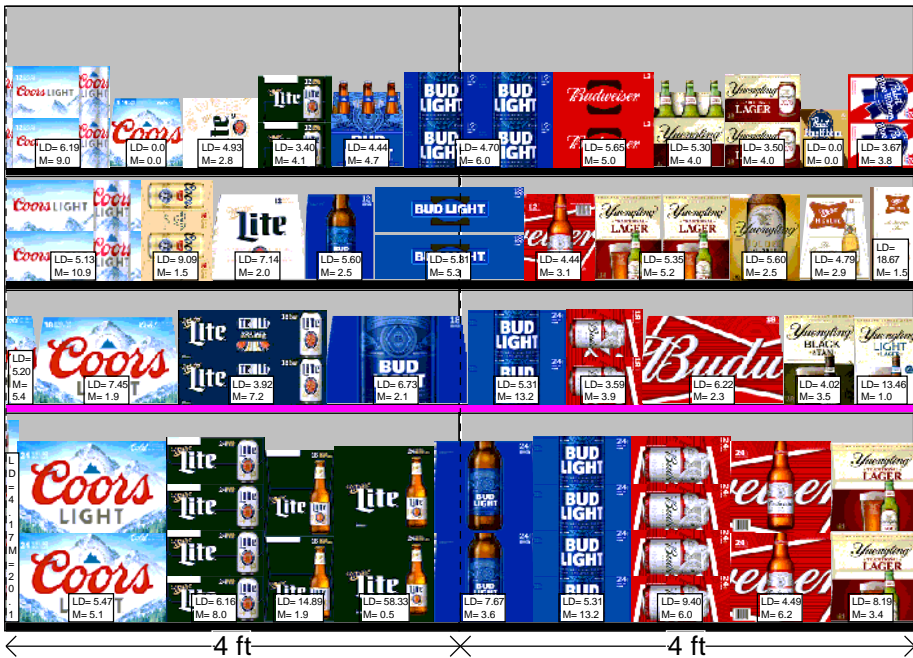
SAUGERTIES, NY

Shelf Schematic Report

*Includes all shelves in the planogram

PRICE CHOPP... Store # 193 | H: 5 ft 6.00 in | W: 60 ft | D: 2 ft 7.00 in | # of segments: 22

24' Open Air Cooler



Name: 19_1	W:240.00 in	D:18.50 in	Avail Space: 2.19 in	Ht Space: 17.00 in		
UPC	Name	MVT	LDOS	Sold L8 Weeks	Authorized	#WKS
7199000048	COORS LIGHT 12/ 12 CAN	9.0	6.19	Sold	APPROVED	26
7199030104	COORS LIGHT 9/ 16 BTL (AL)	0.0	0.0			0
3410057023	LITE 9/ 16 BTL (AL)	2.8	4.93	Sold	APPROVED	25
3410057636	LITE 12/ 12 CAN	4.1	3.40	Sold	APPROVED	26
1820000833	BUD LIGHT 6/ 12 BTL	4.7	4.44	Sold	APPROVED	26
1820053047	BUD LIGHT 12/ 12 CAN	6.0	4.70	Sold	APPROVED	26
1820011047	BUD 12/ 12 CAN	5.0	5.65	Sold	APPROVED	26
8992427891	YUENGLING LAGER 6/ 12 BTL	4.0	5.30	Sold	APPROVED	26
8992427898	YUENGLING LAGER 12/ 12 CAN	4.0	3.50	Sold	APPROVED	26
2210005002	PABST HARD COFFEE 4/ 11 CAN	0.0	0.0		APPROVED	0
2210000170	PABST 12/ 12 CAN	3.8	3.67	Sold	APPROVED	26

Name: 19_2	W:240.00 in	D:21.00 in	Avail Space: 0.24 in	Ht Space: 11.00 in		
UPC	Name	MVT	LDOS	Sold L8 Weeks	Authorized	#WKS
7199010020	COORS BANQUET 18/ 12 CAN	1.5	9.09	Sold	APPROVED	26
3410057509	LITE 12/ 12 BTL	2.0	7.14	Sold	APPROVED	26
1820000769	BUD LIGHT 12/ 12 BTL	2.5	5.60	Sold	APPROVED	26
1820053218	BUD LIGHT 18/ 12 CAN	5.3	5.31	Sold	APPROVED	26
1820000771	BUD 12/ 12 BTL	3.2	4.44	Sold	APPROVED	26
8992427896	YUENGLING LAGER 12/ 12 BTL	5.2	5.35	Sold	APPROVED	26
8992433125	YUENGLING GOLDEN PILSNER 12/ 12 BTL	2.5	5.60	Sold	APPROVED	26
3410001509	HIGH LIFE 12/ 12 BTL	2.9	4.79	Sold	APPROVED	26
3410001636	HIGH LIFE 12/ 12 CAN	1.5	18.67	Sold	APPROVED	26

Name: 19_3	W:288.00 in	D:21.00 in	Avail Space: 3.44 in	Ht Space: 12.00 in		
UPC	Name	MVT	LDOS	Sold L8 Weeks	Authorized	#WKS
7199030078	COORS LIGHT 18/ 12 BTL	1.9	7.45	Sold	APPROVED	26
3410057340	LITE 18/ 12 CAN	7.2	3.92	Sold	APPROVED	26
1820053308	BUD LIGHT 18/ 12 BTL	2.1	6.73	Sold	APPROVED	26
1820053168	BUD LIGHT 24/ 12 CAN	13.2	5.31	Sold	APPROVED	26
1820011218	BUD 18/ 12 CAN	3.9	3.59	Sold	APPROVED	20
1820011308	BUD 18/ 12 BTL	2.3	6.22	Sold	APPROVED	20
8992429386	YUENGLING BLACK AND TAN 12/ 12 BTL	3.5	4.02	Sold	APPROVED	25
8992423040	YUENGLING LIGHT 12/ 12 BTL	1.0	13.46	Sold	APPROVED	24

Name: 19_4	W:288.00 in	D:31.00 in	Avail Space: 4.90 in	Ht Space: 22.00 in		
UPC	Name	MVT	LDOS	Sold L8 Weeks	Authorized	#WKS
7199030079	COORS LIGHT 24/ 12 BTL (HG)	5.1	5.47	Sold	APPROVED	26
3410057306	LITE 24/ 12 CAN	8.0	6.16	Sold	APPROVED	26
3410057256	LITE 18/ 12 BTL	1.9	14.89	Sold	APPROVED	26
3410057243	LITE 24/ 12 BTL (HG)	0.5	58.33	Sold	APPROVED	25
1820053349	BUD LIGHT 24/ 12 BTL (HG)	3.7	7.67	Sold	APPROVED	26
1820053168	BUD LIGHT 24/ 12 CAN	13.2	5.31	Sold	APPROVED	26
1820011168	BUD 24/ 12 CAN	6.0	9.40	Sold	APPROVED	26
1820011349	BUD 24/ 12 BTL (HG)	6.2	4.49	Sold	APPROVED	26
8992441003	YUENGLING LAGER 24/ 12 BTL	3.4	8.19	Sold	APPROVED	26

Cooler Size: 60 ft

Address: 138 ULSTER AVE

SAUGERTIES, NY

Shelf Schematic Report

*Includes all shelves in the planogram

PRICE CHOPP... Store # 193 H: 5 ft 6.00 in W: 60 ft D: 2 ft 7.00 in # of segments: 22

Name: 19_1	W:240.00 in	D:18.50 in	Avail Space: 2.19 in	Ht Space: 17.00 in		
UPC	Name	MVT	LDOS	Sold L8 Weeks	Authorized	#WKS
3410000007	HIGH LIFE 6/ 16 CAN	6.0	4.67	Sold		26
8248812700	BECKS NEAR BEER 6/ 12 BTL	2.4	8.75	Sold	APPROVED	20
7289000621	HEINEKEN 0.0 NEAR BEER 6/ 12 BTL	1.6	13.29	Sold	APPROVED	26
7289000030	BUCKLER NEAR BEER 6/ 12 BTL	4.5	4.63	Sold	APPROVED	26
1820000784	ODOULS NEAR BEER 6/ 12 BTL	1.6	13.29	Sold	APPROVED	24
63598526038	WHITE CLAW BLACK CHERRY 1/ 19.2 CAN	1.0	102.00		APPROVED	23

Name: 19_1 - 5	W:48.00 in	D:18.50 in	Avail Space: 1.23 in	Ht Space: 17.00 in		
UPC	Name	MVT	LDOS	Sold L8 Weeks	Authorized	#WKS
63598526039	WHITE CLAW MANGO 1/ 19.2 CAN	0.0	0.0		APPROVED	0
7199000014	COORS HARD SELTZER BLK CHERRY 1/24 CAN	0.0	0.0			0
8769200951	TRULY WILD BERRY 1/24 CAN	0.0	0.0			0
8769200970	TRULY PINEAPPLE 1/24 CAN	0.0	0.0		APPROVED	0
3410000323	REDDS WICKED 1/24 CAN	0.0	0.0			0
1820025014	BUD LIGHT LIME LIME-A-RITA 1/25 CAN	5.1	8.27	Sold	APPROVED	26
1820025505	BUD LIGHT LIME STRAW-BER-RITA 1/25 CAN	4.3	9.81	Sold	APPROVED	25
1820025533	BUD LIGHT LIME MANG-O-RITA 1/25 CAN	2.1	20.19	Sold	APPROVED	25
72383000002	LAGUNITAS IMPERIAL STOUT 1/22 BTL	0.0	0.0		APPROVED	0
7089701331	FOSTERS 1/25.4 CAN	3.9	9.09	Sold	APPROVED	26
7089718331	FOSTERS PREMIUM 1/25.4 CAN	0.0	0.0		APPROVED	0
8797502650	SAPPORO 1/22 CAN	0.0	0.0		APPROVED	0
78615000057	STELLA ARTOIS 1/22 BTL	0.0	0.0			0
7289000119	HEINEKEN 1/24 CAN	2.5	17.07	Sold	APPROVED	26
8066095643	CORONA 1/24 CAN	3.3	12.54	Sold	APPROVED	26
1820025508	BUD LIGHT CHELADA 1/25 CAN	1.1	38.89	Sold	APPROVED	25

Name: 19_2	W:240.00 in	D:21.00 in	Avail Space: 0.24 in	Ht Space: 11.00 in		
UPC	Name	MVT	LDOS	Sold L8 Weeks	Authorized	#WKS
7143934450	ROLLING ROCK 12/ 12 CAN	2.9	9.59	Sold	APPROVED	26
7031001509	GENESEE 15/ 12 CAN	1.2	11.57	Sold	APPROVED	19
7248002403	SCHAEFER 12/ 12 CAN	2.3	11.91	Sold	APPROVED	17
1820000063	BUSCH 6/ 16 CAN	14.8	4.74	Sold	APPROVED	26
1820061047	BUSCH 12/ 12 CAN	4.2	6.60	Sold	APPROVED	25
1820079047	ODOULS NEAR BEER 12/ 12 CAN	1.9	14.58	Sold	APPROVED	26

Name: 19_2 - 5	W:48.00 in	D:21.00 in	Avail Space: 2.21 in	Ht Space: 11.00 in		
UPC	Name	MVT	LDOS	Sold L8 Weeks	Authorized	#WKS
1820025509	BUD CHELADA 1/25 CAN	1.0	49.00	Sold	APPROVED	24
7199010071	COORS BANQUET 1/24 CAN	10.1	4.84	Sold	APPROVED	26
7199030065	COORS LIGHT 1/24 CAN	3.9	12.50	Sold	APPROVED	26
3410000355	LITE 1/24 CAN	0.0	0.0		APPROVED	0
1820025001	BUD LIGHT 1/25 CAN	2.5	19.60	Sold	APPROVED	6
1820025000	BUD 1/25 CAN	13.1	7.49	Sold	APPROVED	26
1820025002	NATURAL LIGHT 1/25 CAN	2.5	19.76	Sold	APPROVED	25
1820025008	NATURAL ICE 1/25 CAN	8.1	6.06	Sold	APPROVED	26
1820025013	NATTY DADDY 1/25 CAN	12.9	7.61	Sold	APPROVED	26
7199048024	KEYSTONE LIGHT 1/24 CAN	4.1	12.01	Sold	APPROVED	25
7199047712	KEYSTONE ICE 1/24 CAN	4.5	10.99	Sold	APPROVED	26
7143900601	ROLLING ROCK 1/25 CAN	0.0	0.0			0
7031000150	GENESEE CREAM ALE 1/24 CAN	0.0	0.0		APPROVED	0
7825000328	STEEL RESERVE 211 1/24 CAN	0.0	0.0			0



Cooler Size: 60 ft

Address: 138 ULSTER AVE

SAUGERTIES, NY

Shelf Schematic Report

*Includes all shelves in the planogram

Name: 19_3		W:288.00 in	D:21.00 in	Avail Space: 3.44 in		Ht Space: 12.00 in	
UPC	Name	MVT	LDOS	Sold L8 Weeks	Authorized	#WKS	
8992433481	YUENGLING GOLDEN PILSNER 12/ 12 CAN	2.1	13.21	Sold	APPROVED	26	
3410001341	HIGH LIFE 30/ 12 CAN	1.9	7.57	Sold	APPROVED	26	
7143934030	ROLLING ROCK 30/ 12 CAN	3.2	4.44	Sold	APPROVED	26	
1820000063	BUSCH 6/ 16 CAN	14.8	4.74	Sold	APPROVED	26	
1820015030	NATURAL LIGHT 30/ 12 CAN	0.0	0.0		APPROVED	0	
1820020133	NATURDAYS 12/ 12 CAN	0.0	0.0			0	
1820028443	NATURAL ICE 15/ 12 CAN	3.4	4.14	Sold	APPROVED	26	
7031000011	GENESEE 30/ 12 CAN	1.4	9.86	Sold	APPROVED	26	

Name: 19_4		W:288.00 in	D:31.00 in	Avail Space: 4.90 in		Ht Space: 22.00 in	
UPC	Name	MVT	LDOS	Sold L8 Weeks	Authorized	#WKS	
8992488007	YUENGLING LAGER 24/ 12 CAN	4.7	11.94	Sold	APPROVED	26	
2210011219	PABST 30/ 12 CAN	8.7	6.45	Sold	APPROVED	25	
1820086031	BUSCH LIGHT 30/ 12 CAN	6.5	8.62	Sold	APPROVED	26	
1820061030	BUSCH 30/ 12 CAN	11.3	4.95	Sold	APPROVED	26	
1820020077	NATURAL LIGHT 15/ 12 CAN	3.9	29.09	Sold	APPROVED	26	
1820027030	NATURAL ICE 30/ 12 CAN	1.4	19.72	Sold	APPROVED	26	
1820028523	NATURDAYS 30/ 12 CAN	1.0	28.00	Sold	APPROVED	1	
7031001246	DUNDEE HONEY BROWN 30/ 12 CAN	1.0	26.92	Sold	APPROVED	26	





#1	Planogram: 193_60ft_OPEN_COLD		Width: 60 ft	Segments: 22	PRICE CHOPPER SUPERMARKET_...			
Shelf 1_5	H: 1.00 in	W: 96.00 in	D: 24.00 in	Avail Linear: 2.42 in		Merch Spc: 13.00 in		
UPC	Name	Facings	Orientation	Capacity	Assortment	MVMT	DOS	
1	64855894528	1911 ORIGINAL CIDER 4/16 CAN	1	Front	4	IGNORE	0.000	0.0
2	85919900307	CITIZEN UNIFIED PRESS 4/16 CAN	1	Front	4	IGNORE	0.000	0.0
3	85919900332	CITIZEN THE LAKE HOPPER 4/16 CAN	1	Front	4	IGNORE	0.000	0.0
4	85919900313	CITIZEN THE DIRTY MAYOR 4/16 CAN	1	Front	4	IGNORE	0.000	0.0
5	85919900315	CITIZEN WITS UP 4/16 CAN	1	Front	4	IGNORE	0.000	0.0
6	85320500435	SWITCHBACK ALE 4/16 CAN	1	Front	4	ADD	2.000	14.0
7	85320500437	SWITCHBACK IPA 4/16 CAN	1	Front	4		0.000	0.0
8	8834510220	STRONGBOW DRY CIDER 4/16.9 CAN	1	Front	4		0.000	0.0
9	65334188339	KNEE DEEP BREAKING BUD 4/16 CAN	1	Front	4		0.000	0.0
10	63625174079	ARROGANT BASTARD ALE 4/16 CAN	1	Front	4		0.000	0.0
11	60367510177	ALLAGASH WHITE 4/16 CAN	1	Front	4	IGNORE	0.000	0.0
12	85221100332	TOPPLING GOLIATH PSEUDOSUE 4/16 CAN	1	Front	4	IGNORE	0.000	0.0
13	63848900333	DOGFISH HEAD LIQUID TRUTH SERUM I...	1	Front	4		0.000	0.0
14	73692011833	GOOSE ISLAND NEXT COAST IPA 4/16 CAN	1	Front	4	IGNORE	0.000	0.0
15	64090118962	PIPEWORKS LIZARD KING 4/16 CAN	1	Front	4	IGNORE	0.000	0.0
16	64090118924	PIPEWORKS NINJA VS UNICORN 4/16 CAN	1	Front	4	IGNORE	1.000	28.0
17	64102253637	SINGLECUT BILLY 18 WATT IPA 4/16 CAN	1	Front	4		0.000	0.0
18	81957801050	TWO ROADS ROAD 2 RUIN 4/16 CAN	1	Front	4	IGNORE	0.000	0.0
Shelf 1_4	H: 1.00 in	W: 96.00 in	D: 19.00 in	Avail Linear: 2.40 in		Merch Spc: 11.00 in		
UPC	Name	Facings	Orientation	Capacity	Assortment	MVMT	DOS	
19	8176060107	CAPTAIN LAWRENCE NEW ENGLAND IPA ...	1	Front	6		0.000	0.0
20	86326700001	NEWBURGH BROWN ALE 4/16 CAN	1	Front	3		0.000	0.0
21	86326700000	NEWBURGH CREAM ALE 4/16 CAN	1	Front	3		0.000	0.0
22	86326700005	NEWBURGH MEGA BOSS 4/16 CAN	1	Front	3	DELETE	0.720	68.1
23	60690500870	ITHACA FLOWER POWER 4/16 CAN	1	Front	3	ADD	2.000	10.5
24	85155900701	MILLHOUSE KOLD ONE 4/16 CAN	1	Front	3	ADD	0.000	0.0
25	1996250504	PARADOX BEAVER BITE IPA 4/16 CAN	1	Front	3	IGNORE	0.000	0.0
26	81601402048	SOUTHERN TIER NU JUICE IPA 4/16 CAN	1	Front	3		0.000	0.0
27	86810100036	INDUSTRIAL ARTS WRENCH IPA 4/16 CAN	1	Front	3	IGNORE	0.000	0.0
28	86810100031	INDUSTRIAL ARTS METRIC PILS 4/16 CAN	1	Front	3		0.000	0.0
29	86810100035	INDUSTRIAL ARTS TOOLS OF THE TRAD...	1	Front	3		0.000	0.0
30	73079248864	BARRIER MONEY 4/16 CAN	1	Front	3	ADD	2.680	7.8
31	78742186074	SINGLECUT WEIRD AND GILLY 4/16 CAN	1	Front	3		0.000	0.0
32	68174500090	BLUE POINT CITRUS PLUNGE IPA 4/16 CAN	1	Front	3		0.000	0.0
33	68174500048	BLUE POINT HAZY BASTARD 4/16 CAN	1	Front	3		0.000	0.0
34	69685929239	NIGHT SHIFT SANTILLI 4/16 CAN	1	Front	3	IGNORE	1.000	21.0
35	4182700337	HARPOON REC LEAGUE 4/16 CAN	1	Front	3		0.000	0.0
36	85654400742	LORD HOBO BOOM SAUCE 4/16 CAN	1	Front	3	IGNORE	0.000	0.0
Shelf 1_3	H: 1.00 in	W: 96.00 in	D: 19.00 in	Avail Linear: 4.82 in		Merch Spc: 11.00 in		
UPC	Name	Facings	Orientation	Capacity	Assortment	MVMT	DOS	
37	78615000170	STELLA ARTOIS 1/19.2 CAN	3	Front	21	IGNORE	0.000	0.0
38	71925600013	LONG TRAIL AMBER ALE 1/19.2 CAN	1	Front	7	IGNORE	0.000	0.0
39	71925600074	LONG TRAIL TRAIL HOPPER IPA 1/19.2 C...	1	Front	7	IGNORE	0.000	0.0
40	64286013031	FOUNDERS SOLID GOLD 1/19.2 CAN	1	Front	6	IGNORE	0.000	0.0
41	64286013024	FOUNDERS ALL DAY SESSION IPA 1/19.2 ...	3	Front	21	IGNORE	1.290	114.0
42	81994200016	OSKAR BLUES DALES 1/19.2 CAN	2	Front	14	ADD	9.190	10.7
43	81994200017	OSKAR BLUES MAMAS LITTLE YELLA PILS...	1	Front	7		0.000	0.0
44	81994200024	OSKAR BLUES ONE Y 1/19.2 CAN	1	Front	7	IGNORE	2.040	24.0
45	72383001192	LAGUNITAS IPA 1/19.2 CAN	2	Front	14	IGNORE	4.000	24.5
46	72383019247	LAGUNITAS 12TH OF NEVER ALE 1/19.2 ...	2	Front	14	ADD	8.310	11.8
47	72383019245	LAGUNITAS SUMPIN EASY 1/19.2 CAN	1	Front	7	IGNORE	0.000	0.0
48	63848900307	DOGFISH HEAD SEAQUENCH ALE 1/19.2 ...	2	Front	14	IGNORE	5.500	17.8
49	63848900306	DOGFISH HEAD 60 MINUTE IPA 1/19.2 CAN	2	Front	14	IGNORE	4.380	22.4
50	8378337539	SIERRA NEVADA HOP BULLET DOUBLE IP...	1	Front	7	IGNORE	0.000	0.0



#1	Planogram: 193_60ft_OPEN_COLD	Width: 60 ft	Segments: 22	PRICE CHOPPER SUPERMARKET_...				
51	8378337550	SIERRA NEVADA HAZY LITTLE THING IP...	2	Front	14	IGNORE	0.000	0.0
52	8378337535	SIERRA NEVADA BFD 1/19.2 CAN	2	Front	14	IGNORE	0.000	0.0
53	75452700905	NEW BELGIUM VODOO RANGER IPA 1/...	2	Front	14	IGNORE	1.000	98.0
54	63625174209	ARROGANT BASTARD ALE 1/19.2 CAN	1	Front	7	IGNORE	0.000	0.0
55	75452701021	NEW BELGIUM VODOO RANGER IMPERI...	1	Front	7	IGNORE	3.000	16.3
56	63625174211	STONE IPA 1/19.2 CAN	2	Front	14	IGNORE	3.620	27.1
57	85146400357	REVOLUTION ANTI HERO 1/19.2 CAN	2	Front	14		0.000	0.0
Shelf 1_2		H: 1.00 in	W: 96.00 in	D: 19.00 in	Avail Linear: 12.48 in		Merch Spc: 11.00 in	
	UPC	Name	Facings	Orientation	Capacity	Assortment	MVMT	DOS
58	8378311009	SIERRA NEVADA HAZY LITTLE THING IP...	1	Front	14		0.000	0.0
59	8378300005	SIERRA NEVADA PALE ALE 1/12 BTL	1	Front	7		0.000	0.0
60	64944099817	OMMEGANG NIRVANA IPA 1/12 BTL	1	Front	7		0.000	0.0
61	68174511101	BLUE POINT HOPTICAL ILLUSION IPA 1/1...	1	Front	7		0.000	0.0
62	81760601019	CAPTAIN LAWRENCE IPA 1/12 BTL	1	Front	7		0.000	0.0
63	74052210081	BELLS TWO HEARTED ALE 1/12 BTL	1	Front	7		0.000	0.0
64	78624311991	FLYING DOG RAGING BITCH 1/12 BTL	1	Front	7		0.000	0.0
65	78624311178	FLYING DOG SNAKE DOG 1/12 BTL	1	Front	7		0.000	0.0
66	78624311102	FLYING DOG DOGGIE STYLE 1/12 BTL	1	Front	7		0.000	0.0
67	72383000010	LAGUNITAS IPA 1/12 BTL	1	Front	7		0.000	0.0
68	72383000021	LAGUNITAS LITTLE SUMPIN 1/12 BTL	1	Front	7		0.000	0.0
69	73692011131	GOOSE ISLAND IPA 1/12 BTL	1	Front	7		0.000	0.0
70	85375900011	SOUTHERN TIER IPA 1/12 BTL	1	Front	7	IGNORE	0.000	0.0
71	4182700007	HARPOON IPA 1/12 BTL	1	Front	7		0.000	0.0
72	79556310009	SMUTTYNOSE FINESTKIND IPA 1/12 BTL	1	Front	7		0.000	0.0
73	74052210061	BELLS SEASONAL 1/12 BTL (B)	1	Front	7		0.000	0.0
74	4182700014	HARPOON SEASONAL 1/12 BTL	1	Front	7		0.000	0.0
75	0015000003	SIERRA NEVADA SEASONAL 1/12 BTL (A)	1	Front	7		0.000	0.0
76	3020000613	BROOKLYN LAGER 1/12 BTL	1	Front	7		0.000	0.0
77	8769230053	SAMUEL ADAMS SEASONAL 1/12 BTL (A)	1	Front	7		0.000	0.0
78	3061300050	BROOKLYN SEASONAL 1/12 BTL	1	Front	7		0.000	0.0
79	78615000031	LEFFE BLONDE 1/11.2 BTL	1	Front	7		0.000	0.0
80	7231113001	PILSNER URQUELL 1/11.2 BTL	1	Front	8		0.000	0.0
81	79603021496	KONA BIG WAVE GOLDEN ALE 1/12 BTL	1	Front	7		0.000	0.0
82	8066000004	MODELO ESPECIAL 1/12 BTL	1	Front	6		0.000	0.0
83	78615000005	STELLA ARTOIS 1/11.2 BTL	1	Front	7		0.000	0.0
84	18195400001	PERONI 1/11.2 BTL	1	Front	8	IGNORE	0.000	0.0
85	79603021494	KONA LONGBOARD 1/12 BTL	1	Front	7		0.000	0.0
86	3061301950S	BROOKLYN BEL AIR SOUR 1/12 BTL	1	Front	7		0.000	0.0
87	74543218100	BRECKENRIDGE VANILLA PORTER 1/12 B...	1	Front	7		0.000	0.0
88	3060000013	BROOKLYN BROWN ALE 1/12 BTL	1	Front	7		0.000	0.0
89	89968800030	KEEGAN MOTHERS MILK 1/12 BTL	1	Front	7		0.000	0.0
90	8857333100	SHINER BOCK 1/12 BTL	1	Front	7		0.000	0.0
91	8382018101	GUINNESS DRAUGHT STOUT 1/11.2 BTL	1	Front	7		0.000	0.0
Shelf 1_1		H: 1.00 in	W: 96.00 in	D: 19.00 in	Avail Linear: 13.63 in		Merch Spc: 15.00 in	
	UPC	Name	Facings	Orientation	Capacity	Assortment	MVMT	DOS
92	63598550001	WHITE CLAW BLACK CHERRY 1/12 CAN	1	Front	8		0.000	0.0
93	63598526035	WHITE CLAW RASPBERRY 1/12 CAN	1	Front	8		0.000	0.0
94	63598550002	WHITE CLAW RUBY GRAPEFRUIT 1/12 CAN	1	Front	8		0.000	0.0
95	63598550004	WHITE CLAW NATURAL LIME 1/12 CAN	1	Front	8		0.000	0.0
96	8769200677S	TRULY WILD BERRY 1/12 CAN	1	Front	7		0.000	0.0
97	85389700224	BON AND VIV SPIKED SELTZER INDIAN R...	1	Front	8		0.000	0.0
98	85389700226	BON AND VIV SPIKED SELTZER CAPE CO...	1	Front	8	IGNORE	0.000	0.0
99	85389700242S	BON AND VIV SPIKED SELTZER BLACK C...	1	Front	8		0.000	0.0
100	3410000397	HENRYS HARD GRAPE 1/12 BTL	1	Front	7		0.000	0.0
101	85919900322S	CITIZEN BROSE 1/12 CAN	1	Front	7		0.000	0.0



#1	Planogram: 193_60ft_OPEN_COLD	Width: 60 ft	Segments: 22	PRICE CHOPPER SUPERMARKET_...				
102	1497421005S	WOODCHUCK OUT ON A LIMB CHOCOLA...	1	Front	7	IGNORE	0.000	0.0
103	1497450006	WOODCHUCK AMBER 1/12 CAN	1	Front	14	IGNORE	0.000	0.0
104	1497480006S	WOODCHUCK GRANNY SMITH 1/12 CAN	1	Front	7		0.000	0.0
105	79844900210	ACE PEAR 1/12 BTL	1	Front	7		0.000	0.0
106	1820025100	STELLA ARTOIS CIDRE 1/12 BTL	1	Front	7		0.000	0.0
107	8834510197	STRONGBOW APPLE CIDER 1/11.2 BTL	1	Front	7		0.000	0.0
108	8834510150	STRONGBOW GOLD 1/11.2 BTL	1	Front	8		0.000	0.0
109	8769200659S	ANGRY ORCHARD ROSE 1/12 BTL	1	Front	7		0.000	0.0
110	8769282100	ANGRY ORCHARD CRISP APPLE 1/12 BTL	1	Front	7		0.000	0.0
111	78615000037	HOEGAARDEN WHITE 1/11.2 BTL	1	Front	7		0.000	0.0
112	8002000008	ABITA HARVEST STRAWBERRY LAGER 1/...	1	Front	7		0.000	0.0
113	8002000005	ABITA PURPLE HAZE 1/12 BTL	1	Front	7		0.000	0.0
114	8769200003	SAMUEL ADAMS PORCH ROCKER 1/12 BTL	1	Front	7		0.000	0.0
115	8769227100	SAMUEL ADAMS CHERRY WHEAT ALE 1/...	1	Front	7		0.000	0.0
116	8780000073	BLUE MOON BELGIAN WHITE 1/12 BTL	1	Front	7		0.000	0.0
117	7199009560	BLUE MOON MANGO WHEAT 1/12 BTL	1	Front	7		0.000	0.0
118	3410000774	LEINIES SEASONAL PRIMARY 1/12 BTL	1	Front	7		0.000	0.0
119	3410000381	LEINIES GRAPEFRUIT SHANDY 1/12 BTL	1	Front	7		0.000	0.0
120	1820000867	SHOCK TOP BELGIAN WHITE 1/12 BTL	1	Front	7		0.000	0.0
121	79837300002	MAGIC HAT 9 NOT QUITE PALE ALE 1/12 ...	1	Front	7		0.000	0.0
122	79393679168	ELLCOTTVILLE BLUEBERRY 1/12 BTL	1	Front	7		0.000	0.0
123	83305300200	LAKE PLACID UBU 1/12 BTL	1	Front	7	IGNORE	0.000	0.0
124	68174511111	BLUE POINT TOASTED LAGER 1/12 BTL	1	Front	7		0.000	0.0
125	8769200005	SAMUEL ADAMS BOSTON LAGER 1/12 BTL	1	Front	8		0.000	0.0
Shelf 9_4		H: 1.00 in	W: 336.00 in	D: 29.00 in	Avail Linear: 1.92 in		Merch Spc: 24.00 in	
UPC	Name	Facings	Orientation	Capacity	Assortment	MVMT	DOS	
126	63598554890	WHITE CLAW VARIETY 12/12 CAN (ORIG...	2	Side 90	18	RETAIN	33.960	3.7
127	8769200424	TRULY VARIETY CITRUS 12/12 CAN (SLE...	1	Front	12	RETAIN	9.080	9.3
128	8200078142	SMIRNOFF SPIKED SPARKLING SELTZER ...	1	Top 90	8	RETAIN	2.540	22.0
129	85389700251	BON AND VIV SPIKED SELTZER COASTAL...	1	Top 90	6	ADD	2.630	16.0
130	1820020208	BUD LIGHT SELTZER VARIETY 12/12 CAN	1	Top 90	8	ADD	0.000	0.0
131	4182770112	ARCTIC SUMMER SPIKED VARIETY THE ...	1	Front 90	8	RETAIN	4.880	11.5
132	3410051681	CAPE LINE VARIETY 12/12 CAN	1	Top 90	8	RETAIN	1.540	36.4
133	8769283103	TWISTED TEA ORIGINAL 12/12 BTL	1	Side	4	RETAIN	2.380	11.8
134	8769283134	TWISTED TEA ORIGINAL 12/12 CAN	1	Side 90	8	RETAIN	2.770	20.2
135	63598512001	MIKES HARD LEMONADE 12/11.2 BTL	1	Side	6	RETAIN	2.040	20.6
136	63598512998	MIKES HARD VARIETY 12/11.2 BTL	1	Front	6	RETAIN	3.040	13.8
137	8769201103	SAMUEL ADAMS SEASONAL 12/12 BTL (A)	1	Front	6	RETAIN	10.960	3.8
138	8769229103	SAMUEL ADAMS VARIETY 12/12 BTL	1	Side	4	RETAIN	1.960	14.3
139	8769210014	SAMUEL ADAMS BOSTON LAGER 12/12 BTL	1	Side	4	RETAIN	6.310	4.4
140	75452700024	NEW BELGIUM FAT TIRE 12/12 BTL	1	Side	4	RETAIN	3.500	8.0
141	8378367504	SIERRA NEVADA TORPEDO IPA 12/12 BTL	1	Side	6	RETAIN	4.770	8.8
142	8378337512	SIERRA NEVADA PALE ALE 12/12 BTL	1	Side	6	RETAIN	4.000	10.5
143	73692011180	GOOSE ISLAND IPA 12/12 BTL	1	Side	4	RETAIN	0.830	33.7
144	73692011651	GOOSE ISLAND IPA 15/12 CAN	1	Side 90	8	RETAIN	5.310	10.5
145	72383021212	LAGUNITAS IPA 12/12 CAN	1	Side 90	8	RETAIN	2.000	28.0
146	72383010009	LAGUNITAS IPA 12/12 BTL	1	Side	6	DELETE	11.230	3.7
147	64286090024	FOUNDERS ALL DAY SESSION IPA 15/12 ...	1	Side 90	8	RETAIN	7.350	7.6
148	63848900189	DOGFISH HEAD 60 MINUTE IPA 12/12 CAN	1	Side 90	8	RETAIN	2.360	23.7
149	63123467112	SWEETWATER HIGH LIGHT LO CAL EASY ...	1	Side 90	8	RETAIN	1.000	56.0
150	79837330085	MAGIC HAT IPA PLATLIST 15/12 CAN	1	Side 90	8	RETAIN	2.380	23.5
151	4182700712	HARPOON IPA 12/12 BTL	1	Side	4	RETAIN	1.310	21.4
152	4182700334	HARPOON REC LEAGUE 15/12 CAN	1	Side 90	8	RETAIN	1.500	37.3
153	81601402080	SOUTHERN TIER OVERPACKD 15/12 CAN	1	Side 90	8	RETAIN	1.650	33.9
154	0945011026	SARANAC VARIETY 15/12 CAN	1	Side 90	8	RETAIN	2.810	19.9



#1	Planogram: 193_60ft_OPEN_COLD	Width: 60 ft	Segments: 22	PRICE CHOPPER SUPERMARKET_...				
Shelf 9_3	H: 1.00 in	W: 336.00 in	D: 22.00 in	Avail Linear: 3.50 in		Merch Spc: 13.00 in		
UPC	Name	Facings	Orientation	Capacity	Assortment	MVMT	DOS	
155	7167007106	SARANAC 12 BEERS 12/12 BTL	1	Side	4	RETAIN	5.150	5.4
156	68174500134	BLUE POINT TOASTED LAGER 18/12 CAN	1	Side 90	4	RETAIN	1.170	23.9
157	1820028156	SHOCK TOP BELGIAN WHITE 15/12 CAN	1	Side	6	RETAIN	1.730	24.3
158	8769200033	ANGRY ORCHARD CRISP APPLE 12/12 BTL	1	Side	4	RETAIN	3.000	9.3
159	8769200017	ANGRY ORCHARD EXPLORER PACK 12/1...	1	Side	4	RETAIN	3.040	9.2
160	78615000014	STELLA ARTOIS 12/11.2 BTL	1	Front	6	RETAIN	16.150	3.5
161	78615000149	STELLA ARTOIS 18/11.2 BTL	1	Front	6	RETAIN	7.460	5.6
162	8248812300	BECKS 12/12 BTL	1	Side	4	RETAIN	5.310	5.3
163	7289000016	HEINEKEN 12/12 BTL	1	Side	4	RETAIN	13.880	3.5
164	7289000152	HEINEKEN 18/12 BTL	2	Side	4	RETAIN	4.460	6.3
165	7289000423	HEINEKEN LIGHT 18/12 BTL	1	Side	2	RETAIN	1.080	13.0
166	8066095757	MODELO ESPECIAL 12/12 BTL	1	Side	6	RETAIN	4.650	9.0
167	63598526089	WHITE CLAW BLACK CHERRY 12/12 CAN	1	Side	4	RETAIN	6.730	4.2
168	63598502598	WHITE CLAW NATURAL LIME 6/12 CAN	1	Side	6	ADD	2.680	15.7
169	8769200804	TRULY VARIETY TROPICAL 12/12 CAN (S...	1	Front	6	RETAIN	8.270	5.1
170	8769200686	TRULY VARIETY BERRY 12/12 CAN (SLEE...	1	Side	4		0.000	0.0
171	85389700231	BON AND VIV SPIKED SELTZER INDIAN R...	1	Front	8	RETAIN	2.810	19.9
172	1820020217	BUD LIGHT SELTZER VARIETY REMIX 12/...	1	Top 90	3	ADD	0.000	0.0
173	4182770113	ARCTIC SUMMER SPIKED VARIETY THE ...	1	Top 90	3	ADD	0.000	0.0
174	3410051680	CAPE LINE VARIETY 6/12 CAN	1	Front	8	RETAIN	2.620	21.4
175	8769275134	TWISTED TEA HALF AND HALF 12/12 CAN	1	Side 90	4	ADD	2.580	10.9
176	8769283138	TWISTED TEA ORIGINAL 18/12 CAN	1	Side 90	2	ADD	1.500	9.3
177	63598506744	MIKES HARD BLACK CHERRY LEMONADE...	1	Front	4	RETAIN	3.000	9.3
178	63598510062	MIKES HARD LEMONADE 6/11.2 BTL	1	Front	4	RETAIN	2.960	9.5
179	8769200109	SAMUEL ADAMS SEASONAL 12/12 CAN	1	Side 90	4	ADD	0.000	0.0
180	8769200129	SAMUEL ADAMS REBEL IPA 12/12 BTL	1	Side	2	RETAIN	1.190	11.8
181	7199009516	BLUE MOON BELGIAN WHITE 12/12 BTL	2	Side	4	RETAIN	5.920	4.7
182	75452700161	NEW BELGIUM FAT TIRE 12/12 CAN	1	Side 90	4	RETAIN	2.150	13.0
183	8378322812	SIERRA NEVADA SEASONAL 12/12 BTL	1	Side	2	ADD	1.300	10.8
184	8378316000	SIERRA NEVADA 4 WAY IPA VARIETY 12...	1	Side	2	RETAIN	2.270	6.2
185	3410051607	LEINIES SEASONAL PRIMARY 12/12 BTL	1	Side	2	RETAIN	5.380	5.2
186	73692011926	GOOSE ISLAND SO-LO IPA 15/12 CAN	1	Side 90	2	ADD	0.000	0.0
187	72383010045	LAGUNITAS SUMPIN EASY 12/12 CAN	1	Side 90	4	RETAIN	5.580	5.0
188	78624311990	FLYING DOG RAGING BITCH 6/12 BTL	1	Front	4	RETAIN	1.690	16.6
189	64286015064	FOUNDERS UNRAVELED JUICY IPA 6/12 ...	1	Front	8	ADD	0.000	0.0
190	63848900029	DOGFISH HEAD 60 MINUTE IPA 6/12 BTL	1	Front	4	RETAIN	4.000	7.0
191	79837330095	MAGIC HAT VARIETY 15/12 CAN	1	Side 90	2	RETAIN	2.330	6.0
192	71925600199	LONG TRAIL GREEN MOUNTAIN VT IPA 1...	1	Side 90	4	IGNORE	0.000	0.0
193	4182700077	HARPOON IPA 4/16 CAN	1	Front	8	IGNORE	0.920	60.9
194	85375900012	SOUTHERN TIER IPA 6/12 BTL	1	Front	4	RETAIN	2.150	13.0
195	0945001160	SARANAC IPA 12/12 BTL	1	Side	2	RETAIN	2.270	6.2
196	7167009298	SARANAC 100 IPA 12/12 CAN	1	Side 90	4	IGNORE	0.000	0.0
197	74169000013	COOPERSTOWN VARIETY 12/12 BTL	1	Side	2	RETAIN	0.000	0.0
198	1820015981	SHOCK TOP BELGIAN WHITE 12/12 BTL	1	Side	2	RETAIN	1.080	13.0
199	8769282102	ANGRY ORCHARD CRISP APPLE 6/12 BTL	1	Front	4	ADD	4.000	7.0
200	8769200660	ANGRY ORCHARD ROSE 6/12 BTL	1	Front	4	RETAIN	4.270	6.6
201	78615000014	STELLA ARTOIS 12/11.2 BTL	1	Front	2	RETAIN	16.150	3.5
202	78615000016	STELLA ARTOIS 12/11.2 CAN	2	Top 90	6	RETAIN	6.850	6.1
203	8205480451	WARSTEINER PREMIUM 12/11.2 BTL	1	Side	2	RETAIN	1.190	11.8
204	7289000016	HEINEKEN 12/12 BTL	1	Front	3	RETAIN	13.880	3.5
205	7289000159	HEINEKEN LIGHT 12/12 BTL	1	Side	2	RETAIN	1.380	10.1
206	7231123012	DOS EQUIS 12/12 BTL	1	Side	2	RETAIN	1.690	8.3
207	8066095765	MODELO ESPECIAL 6/12 BTL	1	Front	3	RETAIN	2.620	8.0



#	Planogram: 193_60ft_OPEN_COLD	Width: 60 ft	Segments: 22	PRICE CHOPPER SUPERMARKET_...					
208	8066095715	MODELO ESPECIAL 12/12 CAN	1	Side 90	4	RETAIN	5.730	4.9	
	Shelf 9_2	H: 1.00 in W: 336.00 in	D: 22.00 in	Avail Linear: 2.42 in			Merch Spc: 11.00 in		
	UPC	Name	Facings	Orientation	Capacity	Assortment	MVMT	DOS	
209	63598526066	WHITE CLAW RASPBERRY 6/12 CAN	1	Side 90	6	IGNORE	0.000	0.0	
210	63598520028	WHITE CLAW RUBY GRAPEFRUIT 6/12 CAN	1	Side 90	6	RETAIN	1.380	30.4	
211	63598510033	WHITE CLAW MANGO 12/12 CAN	1	Front 90	3	RETAIN	0.000	0.0	
212	63598500021	WHITE CLAW 70 PINEAPPLE 6/12 BOX	1	Side 90	6		0.000	0.0	
213	8769200991	TRULY LEMONADE VARIETY 12/12 CAN	1	Front 90	3	ADD	0.000	0.0	
214	3410001232	VIZZY VARIETY 12/12 CAN (A)	1	Front 90	3	ADD	0.000	0.0	
215	85531000806	CROOK AND MARKER PARTY PACK 8/12 ...	1	Top 90	3	RETAIN	0.000	0.0	
216	85531000827	CROOK AND MARKER ZERO GUILT VARI...	1	Top 90	3	RETAIN	0.000	0.0	
217	4182770022	ARCTIC SUMMER SPIKED RUBY RED GRA...	1	Front	4	RETAIN	0.000	0.0	
218	1820020132	STELLA ARTOIS SPRITZER 6/12 CAN	1	Side	3	RETAIN	1.740	12.1	
219	61300875220	ARNOLD PALMER SPIKED HALF AND HAL...	1	Front 90	3	RETAIN	3.320	6.3	
220	8769283102	TWISTED TEA ORIGINAL 6/12 BTL	1	Front	4	RETAIN	2.540	11.0	
221	63598526042	MIKES HARDER VARIETY 8/16 CAN	1	Side 90	4	RETAIN	1.640	17.1	
222	8043280290	SEAGRAMS ESCAPES VARIETY 12/11.2 BTL	1	Front	3	RETAIN	2.230	9.4	
223	8769200673	SAMUEL ADAMS 76 6/12 CAN	1	Front	8	RETAIN	3.150	17.8	
224	8769230050	SAMUEL ADAMS SEASONAL 6/12 BTL (A)	1	Front	4	RETAIN	4.350	6.4	
225	7199009554	BLUE MOON BREWMASTER VARIETY 12/...	1	Side	2	RETAIN	1.460	9.6	
226	7199009511	BLUE MOON BELGIAN WHITE 6/12 BTL	1	Front	4	RETAIN	4.810	5.8	
227	75452700022	NEW BELGIUM FAT TIRE 6/12 BTL	1	Front	4	RETAIN	2.540	11.0	
228	8378311010	SIERRA NEVADA HAZY LITTLE THING IP...	1	Front	8	RETAIN	4.960	11.3	
229	8378322856	SIERRA NEVADA FANTASTIC HAZE IPA 6...	1	Front	8	ADD	0.000	0.0	
230	3410051607	LEINIES SEASONAL PRIMARY 12/12 BTL	1	Side	2	RETAIN	5.380	5.2	
231	85689500374	GOLDEN ROAD WOLF PUP SESSION 15/1...	1	Side 90	2	RETAIN	1.380	10.1	
232	72383030047	LAGUNITAS 12TH OF NEVER ALE 12/12 C...	1	Side 90	4	RETAIN	2.270	12.3	
233	74052210083	BELLS TWO HEARTED ALE 6/12 BTL	1	Front	4	ADD	2.650	10.6	
234	64286015024	FOUNDERS ALL DAY SESSION IPA 6/12 C...	1	Front	8	RETAIN	2.690	20.8	
235	70277008401	OMISSION ULTIMATE LIGHT 6/12 CAN	1	Front	8	RETAIN	1.240	45.2	
236	79837330141	MAGIC HAT EASY MILES 6/12 CAN	1	Front	8	IGNORE	0.000	0.0	
237	75643501211	OTTER CREEK VARIETY 12/12 CAN	1	Side 90	4	RETAIN	1.580	17.7	
238	4182790083	HARPOON UFO BIG SQUEEZE 6/12 CAN	1	Side	4	RETAIN	1.580	17.7	
239	85375900027	SOUTHERN TIER 2XIPA 6/12 BTL	1	Front	4	RETAIN	2.190	12.8	
240	89968800031	KEEGAN MOTHERS MILK 6/12 BTL	1	Front	4	RETAIN	4.120	6.8	
241	3061300030	BROOKLYN LAGER 6/12 CAN	1	Front	8	IGNORE	0.000	0.0	
242	3061300056	BROOKLYN SUMMER ALE 12/12 CAN	1	Side 90	4	RETAIN	2.640	10.6	
243	3061300071	BROOKLYN VARIETY 12/12 BTL	1	Side	2	RETAIN	1.880	7.4	
244	1497480009	WOODCHUCK GRANNY SMITH 6/12 BTL	1	Front	4	RETAIN	2.000	14.0	
245	8834510201	STRONGBOW ROSE 6/11.2 BTL	1	Front	4	RETAIN	1.460	19.2	
246	1820023997	STELLA ARTOIS CIDRE 12/12 BTL	1	Side	2	RETAIN	1.670	8.4	
247	78615000001	STELLA ARTOIS 6/11.2 BTL	2	Side	6	RETAIN	8.420	5.0	
248	8382012368	GUINNESS DRAUGHT STOUT 8/14.9 CAN	1	Front 90	4	RETAIN	2.880	9.7	
249	8382010403	GUINNESS DRAUGHT STOUT 12/11.2 BTL	1	Side	2	RETAIN	1.880	7.4	
250	8205410454	WARSTEINER PREMIUM 6/11.2 BTL	1	Front	4	ADD	2.620	10.7	
251	7289000011	HEINEKEN 6/12 BTL	1	Front	4	RETAIN	3.650	7.7	
252	7289000020	HEINEKEN 12/12 CAN	1	Side 90	4	RETAIN	2.880	9.7	
253	7289000188	HEINEKEN LIGHT 12/12 CAN	1	Top 90	3	RETAIN	1.190	17.6	
254	8066095787	MODELO NEGRA 12/12 BTL	1	Front	2	RETAIN	1.760	8.0	
	Shelf 9_1	H: 1.00 in W: 336.00 in	D: 22.00 in	Avail Linear: 2.38 in			Merch Spc: 14.00 in		
	UPC	Name	Facings	Orientation	Capacity	Assortment	MVMT	DOS	
255	63598520025	WHITE CLAW BLACK CHERRY 6/12 CAN	1	Side 90	6	RETAIN	5.080	8.3	
256	63598526087	WHITE CLAW MANGO 6/12 CAN	1	Side 90	6	RETAIN	9.000	4.7	
257	63598580006	WHITE CLAW VARIETY 12/12 CAN (NO2)	1	Top 90	3	ADD	0.000	0.0	
258	8769200678	TRULY WILD BERRY 6/12 CAN	1	Front	4	RETAIN	3.080	9.1	



#1	Planogram: 193_60ft_OPEN_COLD	Width: 60 ft	Segments: 22	PRICE CHOPPER SUPERMARKET_...				
259	7199000015	COORS HARD SELTZER VARIETY 12/12 C...	1	Top 90	3		0.000	0.0
260	85389700227	BON AND VIV SPIKED SELTZER VARIETY ...	1	Top 90	3	RETAIN	9.040	2.3
261	3354400043	CORONA SELTZER VARIETY 12/12 CAN (A)	1	Top 90	3	ADD	0.000	0.0
262	1820020180	NATURAL LIGHT SELTZER CATALINA LIM...	1	Top 90	2	RETAIN	0.000	0.0
263	1820020179	NATURAL LIGHT SELTZER VARIETY 12/1...	1	Top 90	2	RETAIN	0.000	0.0
264	3410098916	HENRYS HARD ORANGE 6/12 BTL	1	Front	4	ADD	0.000	0.0
265	3354495067	CORONA REFRESCA GUAVA LIME 6/12 CAN	1	Side	3	RETAIN	1.600	13.1
266	3354400013	CORONA VARIETY REFRESCA 12/12 CAN	1	Top 90	3	RETAIN	3.690	5.7
267	8200072908	SMIRNOFF ICE VARIETY 12/11.2 BTL	1	Side	2	RETAIN	1.420	9.9
268	1820022989	BUD LIGHT LIME MANG-O-RITA 12/8 CAN	1	Top 90	3	RETAIN	1.480	14.2
269	8769200497	SAMUEL ADAMS 76 12/12 CAN	1	Side 90	4	RETAIN	0.000	0.0
270	7199009592	BLUE MOON LIGHT SKY 12/12 CAN	1	Top 90	3	ADD	0.000	0.0
271	7199009561	BLUE MOON MANGO WHEAT 6/12 BTL	1	Front	4	RETAIN	1.810	15.5
272	63625174002	STONE DELICIOUS IPA 6/12 BTL	1	Front	4	RETAIN	1.920	14.6
273	63625174094	STONE IPA 12/12 CAN	1	Side 90	4	RETAIN	1.320	21.2
274	63625188901	STONE VARIETY 12/12 BTL	1	Side	2	RETAIN	1.000	14.0
275	8378322822	SIERRA NEVADA SEASONAL 6/12 BTL	1	Front	4	ADD	2.230	12.6
276	3410051605	LEINIES SEASONAL PRIMARY 6/12 BTL	1	Front	4	RETAIN	2.460	11.4
277	85961200103	21ST AMENDMENT BREW FREE OR DIE 6...	1	Front	8	RETAIN	2.540	22.0
278	72383010001	LAGUNITAS HOP STOOPID 6/12 BTL	1	Front	4	RETAIN	1.270	22.0
279	72383000009	LAGUNITAS IPA 6/12 BTL	1	Front	4	ADD	2.460	11.4
280	73698358259	PEAK ORGANIC FRESH CUT 6/12 CAN	1	Front	8	RETAIN	2.920	19.2
281	8002042230	ABITA PURPLE HAZE 6/12 BTL	1	Front	4	RETAIN	1.500	18.7
282	75643501237	OTTER CREEK FREE FLOW IPA 12/12 CAN	1	Side 90	4	RETAIN	0.880	31.8
283	81760601076	CAPTAIN LAWRENCE HOP COMMANDER ...	1	Front	8	IGNORE	0.000	0.0
284	60155799248	NORTHWAY SUNRISE SESSION IPA 4/16 ...	1	Side	4	RETAIN	0.000	0.0
285	86326700005	NEWBURGH MEGA BOSS 4/16 CAN	1	Front	4	DELETE	0.720	68.1
286	85909300242	SIXPOINT SWEET ACTION 6/12 CAN	1	Front	8	RETAIN	2.730	20.5
287	85909300246	SIXPOINT RESIN IIPA 6/12 CAN	1	Front	8	RETAIN	2.200	25.5
288	85909300243	SIXPOINT BENGALI IPA 6/12 CAN	1	Front	8	RETAIN	3.920	14.3
289	8834510198	STRONGBOW ARTISAN BLEND 6/11.2 BTL	1	Front	4	RETAIN	1.880	14.9
290	7199076400	KILLIANS IRISH RED 12/12 BTL	1	Front	2	RETAIN	0.880	15.9
291	8382012393	GUINNESS EXTRA STOUT 6/12 BTL	1	Front	4	RETAIN	2.850	9.8
292	8382010401	GUINNESS DRAUGHT STOUT 6/11.2 BTL	1	Front	4	RETAIN	2.690	10.4
293	8382012360	GUINNESS DRAUGHT STOUT 4/14.9 CAN	1	Front 90	8	RETAIN	2.650	21.1
294	8205480754	WARSTEINER OKTOBERFEST 6/11.2 BTL	1	Front	4	RETAIN	1.820	15.4
295	18195400115	PERONI 6/11.2 CAN	1	Front	8	RETAIN	2.310	24.2
296	18195400002	PERONI 6/11.2 BTL	1	Front	4	RETAIN	3.850	7.3
297	8382056793	RED STRIPE LAGER 6/11.2 BTL	1	Front	4	RETAIN	1.690	16.6
298	8834510005	NEWCASTLE BROWN ALE 6/12 BTL	1	Front	4	RETAIN	1.250	22.4
299	7289010016	AMSTEL LIGHT 12/12 BTL	1	Side	2	RETAIN	2.190	6.4
300	78615000030	LEFFE BLONDE 6/11.2 BTL	1	Front	4	RETAIN	2.350	11.9
301	3354495031	PACIFICO 12/12 CAN	1	Side 90	4	RETAIN	1.690	16.6
	Shelf 19_4	H: 1.00 in W: 288.00 in	D: 31.00 in	Avail Linear: 4.90 in		Merch Spc: 22.00 in		
	UPC	Name	Facings	Orientation	Capacity	Assortment	MVMT	DOS
302	8066095615	CORONA 12/12 BTL	1	Front	8	RETAIN	24.500	3.4
303	8066095680	CORONA 18/12 BTL	3	Side	9	RETAIN	12.770	4.9
304	3354495042	CORONA PREMIER 12/12 BTL	1	Side	6	RETAIN	4.580	9.2
305	1820096624	MICHELOB ULTRA 18/12 BTL	1	Side	4	RETAIN	5.230	5.4
306	1820096715	MICHELOB ULTRA 24/12 CAN	1	Side 90	6	RETAIN	10.230	4.1
307	1820096721	MICHELOB ULTRA 18/12 CAN	1	Top	12	RETAIN	5.150	16.3
308	6206704941	LABATT BLUE LIGHT 24/12 CAN	1	Side 90	8	RETAIN	1.000	56.0
309	7199031600	COORS LIGHT 24/12 CAN	1	Top	12	RETAIN	20.150	4.2
310	7199030079	COORS LIGHT 24/12 BTL (HG)	1	Front	4	RETAIN	5.120	5.5
311	3410057306	LITE 24/12 CAN	1	Side 90	7	RETAIN	7.960	6.2



#1	Planogram: 193_60ft_OPEN_COLD	Width: 60 ft	Segments: 22	PRICE CHOPPER SUPERMARKET_...				
312	3410057256	LITE 18/12 BTL	1	Side	4	RETAIN	1.880	14.9
313	3410057243	LITE 24/12 BTL (HG)	1	Side	4	DELETE	0.480	58.3
314	1820053349	BUD LIGHT 24/12 BTL (HG)	1	Side	4	RETAIN	3.650	7.7
315	1820053168	BUD LIGHT 24/12 CAN	1	Side 90	8	RETAIN	13.190	5.3
316	1820011168	BUD 24/12 CAN	1	Side 90	8	RETAIN	5.960	9.4
317	1820011349	BUD 24/12 BTL (HG)	1	Side	4	RETAIN	6.230	4.5
318	8992441003	YUENGLING LAGER 24/12 BTL	1	Side	4	RETAIN	3.420	8.2
319	8992488007	YUENGLING LAGER 24/12 CAN	1	Side 90	8	RETAIN	4.690	11.9
320	2210011219	PABST 30/12 CAN	2	Side	8	RETAIN	8.680	6.5
321	1820086031	BUSCH LIGHT 30/12 CAN	1	Front	8	RETAIN	6.500	8.6
322	1820061030	BUSCH 30/12 CAN	1	Front	8	RETAIN	11.310	5.0
323	1820020077	NATURAL LIGHT 15/12 CAN	1	Top	16	RETAIN	3.850	29.1
324	1820027030	NATURAL ICE 30/12 CAN	1	Side	4	RETAIN	1.420	19.7
325	1820028523	NATURDAYS 30/12 CAN	1	Side	4	RETAIN	1.000	28.0
326	7031001246	DUNDEE HONEY BROWN 30/12 CAN	1	Side	4	RETAIN	1.040	26.9

Shelf 19_3	H: 1.00 in	W: 288.00 in	D: 21.00 in	Avail Linear: 3.44 in	Merch Spc: 12.00 in
------------	------------	--------------	-------------	-----------------------	---------------------

UPC	Name	Facings	Orientation	Capacity	Assortment	MVMT	DOS	
327	8066095615	CORONA 12/12 BTL	2	Side	4	RETAIN	24.500	3.4
328	8066095623	CORONA LIGHT 18/12 BTL	1	Front	2	RETAIN	5.040	4.2
329	8066095623	CORONA LIGHT 18/12 BTL	1	Side	1	RETAIN	5.040	4.2
330	1820012998	LANDSHARK 12/12 BTL	1	Side	2	RETAIN	1.420	9.9
331	1820020080	BUD LIGHT ORANGE 12/12 BTL	1	Side	2	RETAIN	1.120	12.5
332	1820096728	MICHELOB ULTRA 24/12 BTL	1	Front	2	RETAIN	0.000	0.0
333	6206704942	LABATT BLUE LIGHT 12/12 CAN	1	Front	4	ADD	0.000	0.0
334	7199030069	COORS LIGHT 12/12 BTL	2	Front	4	RETAIN	5.380	5.2
335	7199030078	COORS LIGHT 18/12 BTL	1	Front	2	RETAIN	1.880	7.4
336	3410057340	LITE 18/12 CAN	1	Top	4	RETAIN	7.150	3.9
337	1820053308	BUD LIGHT 18/12 BTL	1	Front	2	RETAIN	2.080	6.7
338	1820053168	BUD LIGHT 24/12 CAN	1	Side 90	2	RETAIN	13.190	5.3
339	1820011218	BUD 18/12 CAN	1	Side 90	2	RETAIN	3.900	3.6
340	1820011308	BUD 18/12 BTL	1	Front	2	RETAIN	2.250	6.2
341	8992429386	YUENGLING BLACK AND TAN 12/12 BTL	1	Side	2	RETAIN	3.480	4.0
342	8992423040	YUENGLING LIGHT 12/12 BTL	1	Side	2	DELETE	1.040	13.5
343	8992433481	YUENGLING GOLDEN PILSNER 12/12 CAN	1	Side 90	4	RETAIN	2.120	13.2
344	3410001341	HIGH LIFE 30/12 CAN	1	Front	2	RETAIN	1.850	7.6
345	7143934030	ROLLING ROCK 30/12 CAN	1	Front	2	RETAIN	3.150	4.4
346	1820000063	BUSCH 6/16 CAN	2	Front	8	RETAIN	14.770	4.7
347	1820015030	NATURAL LIGHT 30/12 CAN	1	Front	2	ADD	0.000	0.0
348	1820020133	NATURDAYS 12/12 CAN	1	Side 90	4		0.000	0.0
349	1820028443	NATURAL ICE 15/12 CAN	1	Side 90	2	RETAIN	3.380	4.1
350	7031000011	GENESEE 30/12 CAN	1	Front	2	RETAIN	1.420	9.9

Shelf 19_2	H: 1.00 in	W: 240.00 in	D: 21.00 in	Avail Linear: 0.24 in	Merch Spc: 11.00 in
------------	------------	--------------	-------------	-----------------------	---------------------

UPC	Name	Facings	Orientation	Capacity	Assortment	MVMT	DOS	
351	8066095401	CORONA 6/7 BTL	1	Front	4	RETAIN	3.690	7.6
352	8066095675	CORONA LIGHT 12/12 BTL	2	Side	4	RETAIN	6.580	4.3
353	3354495044	CORONA PREMIER 12/12 CAN	1	Top 90	3	RETAIN	2.080	10.1
354	3354400018	CORONA PREMIER 18/12 BTL	1	Front	2	RETAIN	2.120	6.6
355	1820014990	BUD LIGHT LIME 12/12 BTL	1	Side	2	RETAIN	1.000	14.0
356	1820020083	MICHELOB ULTRA PURE GOLD 12/12 BTL	1	Side	2	RETAIN	1.540	9.1
357	1820005990	MICHELOB ULTRA 12/12 BTL	1	Side	2	RETAIN	2.150	6.5
358	1820006991	MICHELOB ULTRA 12/12 CAN	1	Top 90	3	RETAIN	1.650	12.7
359	6821303117	MOLSON CANADIAN 12/12 BTL	1	Side	2	RETAIN	1.000	14.0
360	7199030017	COORS LIGHT 18/12 CAN	2	Top	8	RETAIN	10.920	5.1
361	7199010020	COORS BANQUET 18/12 CAN	1	Side 90	2	RETAIN	1.540	9.1
362	3410057509	LITE 12/12 BTL	1	Front	2	RETAIN	1.960	7.1



#1	Planogram: 193_60ft_OPEN_COLD	Width: 60 ft	Segments: 22	PRICE CHOPPER SUPERMARKET_...				
363	1820000769	BUD LIGHT 12/12 BTL	1	Side	2	RETAIN	2.500	5.6
364	1820053218	BUD LIGHT 18/12 CAN	1	Top	4	RETAIN	5.270	5.3
365	1820000771	BUD 12/12 BTL	1	Side	2	RETAIN	3.150	4.4
366	8992427896	YUENGLING LAGER 12/12 BTL	2	Side	4	RETAIN	5.230	5.4
367	8992433125	YUENGLING GOLDEN PILSNER 12/12 BTL	1	Side	2	RETAIN	2.500	5.6
368	3410001509	HIGH LIFE 12/12 BTL	1	Side	2	RETAIN	2.920	4.8
369	3410001636	HIGH LIFE 12/12 CAN	1	Side 90	4	RETAIN	1.500	18.7
370	7143934450	ROLLING ROCK 12/12 CAN	1	Side 90	4	RETAIN	2.920	9.6
371	7031001509	GENESEE 15/12 CAN	1	Side 90	2	RETAIN	1.210	11.6
372	7248002403	SCHAEFER 12/12 CAN	1	Side 90	4	RETAIN	2.350	11.9
373	1820000063	BUSCH 6/16 CAN	1	Side	2	RETAIN	14.770	4.7
374	1820061047	BUSCH 12/12 CAN	1	Side 90	4	RETAIN	4.240	6.6
375	1820079047	ODOULS NEAR BEER 12/12 CAN	1	Side 90	4	RETAIN	1.920	14.6
Shelf 19_1		H: 1.00 in	W: 240.00 in	D: 18.50 in	Avail Linear: 2.19 in		Merch Spc: 17.00 in	
	UPC	Name	Facings	Orientation	Capacity	Assortment	MVMT	DOS
376	8066095605	CORONA 6/12 BTL	1	Front	3	RETAIN	7.150	4.9
377	8066095605	CORONA 6/12 BTL	1	Side	2	RETAIN	7.150	4.9
378	8066095695	CORONA 12/12 CAN	1	Top 90	2	RETAIN	2.200	6.4
379	8066095625	CORONA LIGHT 6/12 BTL	1	Front	3	RETAIN	2.850	7.4
380	8066095621	CORONA LIGHT 12/12 CAN	1	Top 90	2	RETAIN	2.120	6.6
381	3354495041	CORONA PREMIER 6/12 BTL	1	Front	3	RETAIN	1.310	16.0
382	1820014991	BUD LIGHT LIME 6/12 BTL	1	Front	3	RETAIN	1.320	15.9
383	1820015983	BUD LIGHT LIME 12/12 CAN	1	Front 90	2	RETAIN	1.120	12.5
384	1820020082	MICHELOB ULTRA PURE GOLD 6/12 BTL	1	Front	3	RETAIN	1.540	13.6
385	1820005989	MICHELOB ULTRA 6/12 BTL	1	Front	3	RETAIN	3.040	6.9
386	6821302117	MOLSON GOLDEN 12/12 BTL	1	Front	2	RETAIN	1.380	10.1
387	7199030005	COORS LIGHT 6/12 BTL	1	Front	3	RETAIN	3.620	5.8
388	7199000048	COORS LIGHT 12/12 CAN	2	Top	8	RETAIN	9.040	6.2
389	7199030104	COORS LIGHT 9/16 BTL (AL)	1	Front	2	IGNORE	0.000	0.0
390	3410057023	LITE 9/16 BTL (AL)	1	Front	2	RETAIN	2.840	4.9
391	3410057636	LITE 12/12 CAN	1	Side 90	2	RETAIN	4.120	3.4
392	1820000833	BUD LIGHT 6/12 BTL	1	Front	3	RETAIN	4.730	4.4
393	1820053047	BUD LIGHT 12/12 CAN	2	Side 90	4	RETAIN	5.960	4.7
394	1820011047	BUD 12/12 CAN	1	Top	4	RETAIN	4.960	5.6
395	8992427891	YUENGLING LAGER 6/12 BTL	1	Front	3	RETAIN	3.960	5.3
396	8992427898	YUENGLING LAGER 12/12 CAN	1	Side 90	2	RETAIN	4.000	3.5
397	2210005002	PABST HARD COFFEE 4/11 CAN	1	Front	3	ADD	0.000	0.0
398	2210000170	PABST 12/12 CAN	1	Side 90	2	RETAIN	3.810	3.7
399	3410000007	HIGH LIFE 6/16 CAN	2	Side	4	RETAIN	6.000	4.7
400	8248812700	BECKS NEAR BEER 6/12 BTL	1	Front	3	RETAIN	2.400	8.8
401	7289000621	HEINEKEN 0.0 NEAR BEER 6/12 BTL	1	Front	3	RETAIN	1.580	13.3
402	7289000030	BUCKLER NEAR BEER 6/12 BTL	1	Front	3	RETAIN	4.540	4.6
403	1820000784	ODOULS NEAR BEER 6/12 BTL	1	Front	3	RETAIN	1.580	13.3
404	63598526038	WHITE CLAW BLACK CHERRY 1/19.2 CAN	2	Front	14	IGNORE	0.960	102.1
Shelf 19_2 - 5		H: 1.00 in	W: 48.00 in	D: 21.00 in	Avail Linear: 2.21 in		Merch Spc: 11.00 in	
	UPC	Name	Facings	Orientation	Capacity	Assortment	MVMT	DOS
405	1820025509	BUD CHELADA 1/25 CAN	1	Front	7	IGNORE	1.000	49.0
406	7199010071	COORS BANQUET 1/24 CAN	1	Front	7	RETAIN	10.120	4.8
407	7199030065	COORS LIGHT 1/24 CAN	1	Front	7	DELETE	3.920	12.5
408	3410000355	LITE 1/24 CAN	1	Front	7	ADD	0.000	0.0
409	1820025001	BUD LIGHT 1/25 CAN	1	Front	7	IGNORE	2.500	19.6
410	1820025000	BUD 1/25 CAN	2	Front	14	RETAIN	13.080	7.5
411	1820025002	NATURAL LIGHT 1/25 CAN	1	Front	7	DELETE	2.480	19.8
412	1820025008	NATURAL ICE 1/25 CAN	1	Front	7	RETAIN	8.080	6.1
413	1820025013	NATTY DADDY 1/25 CAN	2	Front	14	RETAIN	12.880	7.6



#1	Planogram: 193_60ft_OPEN_COLD	Width: 60 ft	Segments: 22	PRICE CHOPPER SUPERMARKET_...				
414	7199048024	KEYSTONE LIGHT 1/24 CAN	1	Front	7	DELETE	4.080	12.0
415	7199047712	KEYSTONE ICE 1/24 CAN	1	Front	7	DELETE	4.460	11.0
416	7143900601	ROLLING ROCK 1/25 CAN	1	Front	7	IGNORE	0.000	0.0
417	7031000150	GENESEE CREAM ALE 1/24 CAN	1	Front	7	IGNORE	0.000	0.0
418	7825000328	STEEL RESERVE 211 1/24 CAN	1	Front	7	IGNORE	0.000	0.0
Shelf 19_1 - 5		H: 1.00 in	W: 48.00 in	D: 18.50 in	Avail Linear: 1.23 in		Merch Spc: 17.00 in	
	UPC	Name	Facings	Orientation	Capacity	Assortment	MVMT	DOS
419	63598526039	WHITE CLAW MANGO 1/19.2 CAN	1	Front	7		0.000	0.0
420	7199000014	COORS HARD SELTZER BLK CHERRY 1/2...	1	Front	6		0.000	0.0
421	8769200951	TRULY WILD BERRY 1/24 CAN	1	Front	6	IGNORE	0.000	0.0
422	8769200970	TRULY PINEAPPLE 1/24 CAN	1	Front	6	IGNORE	0.000	0.0
423	3410000323	REDD'S WICKED 1/24 CAN	1	Front	6	IGNORE	0.000	0.0
424	1820025014	BUD LIGHT LIME LIME-A-RITA 1/25 CAN	1	Front	6	IGNORE	5.080	8.3
425	1820025505	BUD LIGHT LIME STRAW-BER-RITA 1/25 ...	1	Front	6	IGNORE	4.280	9.8
426	1820025533	BUD LIGHT LIME MANG-O-RITA 1/25 CAN	1	Front	6	IGNORE	2.080	20.2
427	72383000002	LAGUNITAS IMPERIAL STOUT 1/22 BTL	1	Front	6	IGNORE	0.000	0.0
428	7089701331	FOSTERS 1/25.4 CAN	1	Front	5	DELETE	3.850	9.1
429	7089718331	FOSTERS PREMIUM 1/25.4 CAN	1	Front	5	IGNORE	0.000	0.0
430	8797502650	SAPPORO 1/22 CAN	1	Front	6	IGNORE	0.000	0.0
431	78615000057	STELLA ARTOIS 1/22 BTL	1	Front	6	IGNORE	0.000	0.0
432	7289000119	HEINEKEN 1/24 CAN	1	Front	6	IGNORE	2.460	17.1
433	8066095643	CORONA 1/24 CAN	1	Front	6	IGNORE	3.350	12.5
434	1820025508	BUD LIGHT CHELADA 1/25 CAN	1	Front	6	IGNORE	1.080	38.9