

Rite Aid
Store# 3774
BRONX, NY

FINAL

Cold

FMB always lead flow in relation to store traffic flow.
Open a support ticket if planogram flow shown is reversed from actual store traffic flow

Segment 1 of 7 starting view

Shelf Schematic Report

RITE AID_3774 Store # 3774 # of segments: 7



| Name: 1_1 | W:30.00 in | D:24.00 in | | | |
|----------------|------------------|------------|----------|-------------|--|
| UPC (12 Digit) | Name | Ast | HFaci... | Orientat... | |
| 07289000163 | HEINEKEN12/12BTL | Core | 3 | Front | |

| Name: 1_2 | W:30.00 in | D:22.00 in | | | |
|----------------|-----------------------------|------------|----------|-------------|--|
| UPC (12 Digit) | Name | Ast | HFaci... | Orientat... | |
| 072890005298 | HEINEKEN12/8CAN | | 1 | Top 90 | |
| 072890000118 | HEINEKEN6/12BTL | Core | 1 | Side | |
| 072890006219 | HEINEKEN0.0NEARBEER6/12B... | | 1 | Side | |
| 072890001580 | HEINEKENLIGHT6/12BTL | | 1 | Side | |
| 072890001597 | HEINEKENLIGHT12/12BTL | Core | 1 | Side | |

| Name: 1_3 | W:30.00 in | D:22.00 in | | | |
|----------------|-----------------------|------------|----------|-------------|--|
| UPC (12 Digit) | Name | Ast | HFaci... | Orientat... | |
| 072890001191 | HEINEKEN1/24CAN | | 1 | Front | |
| 080660956435 | CORONA1/24CAN | | 1 | Front | |
| 080660957210 | MODELOESPECIAL1/24CAN | | 1 | Front | |
| 018200250002 | BUD1/25CAN | | 1 | Front | |
| 071990300654 | COORSLIGHT1/24CAN | | 1 | Front | |
| 071990100711 | COORSBANQUET1/24CAN | | 1 | Front | |
| 034100003555 | LITE1/24CAN | | 1 | Front | |
| 034100000059 | HIGHLIFE1/24CAN | | 1 | Front | |
| 071990477127 | KEYSTONEICE1/24CAN | | 1 | Front | |
| 018200250132 | NATTYDADDY1/25CAN | | 1 | Front | |

| Name: 1_4 | W:30.00 in | D:22.00 in | | | |
|----------------|-----------------------------|------------|----------|-------------|--|
| UPC (12 Digit) | Name | Ast | HFaci... | Orientat... | |
| 034100000974 | VIZZYPINEAPPLEMANGO1/24... | New | 1 | Front | |
| 087692010142 | TRULYLEMONADE1/24CAN | PRO... | 1 | Front | |
| 635985260387 | WHITECLAWBLACKCHERRY1/... | | 1 | Front | |
| 635985260394 | WHITECLAWMANGO1/19.2CAN | PRO... | 1 | Front | |
| 070897013315 | FOSTERS1/25.4CAN | | 1 | Front | |
| 070897183315 | FOSTERSPREMIUM1/25.4CAN | | 1 | Front | |
| 018200255052 | BUDLIGHTLIMESTRAW-BER-RI... | | 1 | Front | |
| 087975026501 | SAPPORO1/22CAN | | 1 | Front | |
| 018200250286 | BECKS1/25.4CAN | | 1 | Front | |

| Name: 1_5 | W:30.00 in | D:12.00 in | | | |
|----------------|---------------------------|------------|----------|-------------|--|
| UPC (12 Digit) | Name | Ast | HFaci... | Orientat... | |
| 070310014837 | SEAGRAMSESCAPESSPIKEDJ... | | 2 | Front | |

2020 FALL

Segment View

Rite Aid
Store# 3774
BRONX , NY

FINAL

Cold

FMB always lead flow in relation to store traffic flow.
 Open a support ticket if planogram flow shown is reversed from actual store traffic flow

Segment 1 of 7 starting view

Shelf Schematic Report



| RITE AID 3774 | Store # 3774 | # of segments: 7 | | | |
|---------------|---------------------------|------------------|---|-------|--|
| 635985245834 | MIKESHARDERLEMONADE1/2... | New | 2 | Front | |
| 635985249856 | MIKESHARDERCranberryL... | PRO... | 2 | Front | |
| 087692832317 | TWISTEDTEAORIGINAL1/24CAN | | 2 | Front | |
| 613008748296 | ARNOLDPALMERSPIKEDHALF... | | 2 | Front | |

| Name: 2_1 | W:30.00 in | D:24.00 in | | | |
|----------------|------------------------|------------|----------|-------------|--|
| UPC (12 Digit) | Name | Ast | HFaci... | Orientat... | |
| 786150000144 | STELLAARTOIS12/11.2BTL | Core | 1 | Front | |
| 181954000046 | PERONI12/11.2BTL | | 1 | Side | |
| 082488123006 | BECKS12/12BTL | Core | 1 | Front | |

| Name: 2_2 | W:30.00 in | D:22.00 in | | | |
|----------------|----------------------------|------------|----------|-------------|--|
| UPC (12 Digit) | Name | Ast | HFaci... | Orientat... | |
| 786150000168 | STELLAARTOIS12/11.2CAN | Core | 1 | Top 90 | |
| 786150000014 | STELLAARTOIS6/11.2BTL | Core | 1 | Side | |
| 181954000022 | PERONI6/11.2BTL | | 1 | Side | |
| 083820123937 | GUINNESSEXTRASTOUT6/12B... | Core | 1 | Side | |
| 018200202179 | BUDLIGHTSELTZERVARIETYR... | New | 1 | Front 90 | |

| Name: 2_3 | W:30.00 in | D:22.00 in | | | |
|----------------|----------------------------|------------|----------|-------------|--|
| UPC (12 Digit) | Name | Ast | HFaci... | Orientat... | |
| 635985200253 | WHITECLAWBLACKCHERRY6/... | | 1 | Side | |
| 635985548904 | WHITECLAWVARIETY12/12CA... | Core | 1 | Front 90 | |
| 087692006862 | TRULYVARIETYBERRY12/12C... | Core | 1 | Front 90 | |
| 071990000158 | COORSHARDSELTZERVARIET... | New | 1 | Front 90 | |
| 018200202087 | BUDLIGHTSELTZERVARIETY1... | PRO... | 1 | Front 90 | |

| Name: 2_4 | W:30.00 in | D:22.00 in | | | |
|----------------|----------------------------|------------|----------|-------------|--|
| UPC (12 Digit) | Name | Ast | HFaci... | Orientat... | |
| 635985260875 | WHITECLAWMANGO6/12CAN | | 1 | Top 90 | |
| 635985800064 | WHITECLAWVARIETY12/12CA... | PRO... | 1 | Front 90 | |
| 087692009917 | TRULYLEMONADEVARIETY12/... | PRO... | 1 | Front 90 | |
| 033544000434 | CORONASELTZERVARIETY12/... | PRO... | 1 | Front 90 | |
| 033544950630 | CORONAREFRESCAPASSION... | | 1 | Side 90 | |

| Name: 2_5 | W:30.00 in | D:12.00 in | | | |
|----------------|---------------------------|------------|----------|-------------|--|
| UPC (12 Digit) | Name | Ast | HFaci... | Orientat... | |
| 034100012328 | VIZZYVARIETY12/12CAN(A) | PRO... | 2 | Front 90 | |
| 033544000137 | CORONAVARIETYREFRESCA1... | | 2 | Front 90 | |

Rite Aid
Store# 3774
BRONX, NY

FINAL

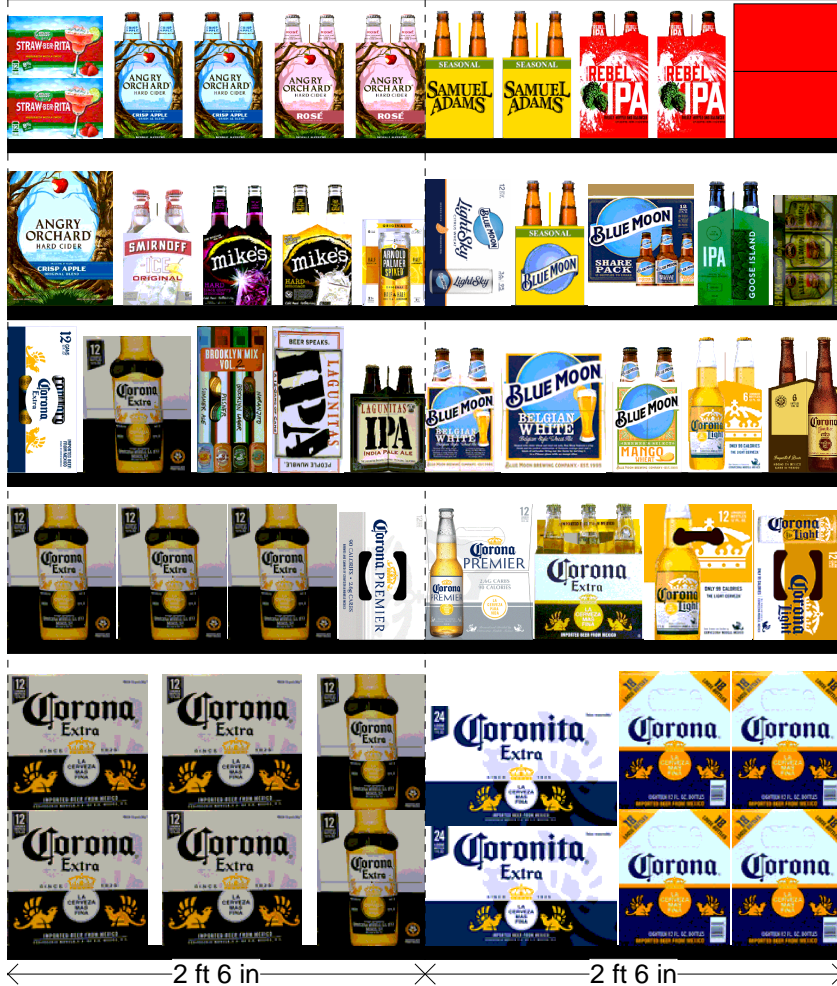
Cold

FMB always lead flow in relation to store traffic flow.
Open a support ticket if planogram flow shown is reversed from actual store traffic flow

Segment 3 of 7 starting view

Shelf Schematic Report

RITE AID_3774 Store # 3774 # of segments: 7



| Name: 3_1 | W:30.00 in | D:24.00 in | | | |
|----------------|----------------|------------|----------|-------------|--|
| UPC (12 Digit) | Name | Ast | HFaci... | Orientat... | |
| 080660956152 | CORONA12/12BTL | Core | 2 | Front | |
| 080660956152 | CORONA12/12BTL | Core | 1 | Side | |

| Name: 3_2 | W:30.00 in | D:22.00 in | | | |
|----------------|-----------------------|------------|----------|-------------|--|
| UPC (12 Digit) | Name | Ast | HFaci... | Orientat... | |
| 080660956152 | CORONA12/12BTL | Core | 2 | Side | |
| 080660956152 | CORONA12/12BTL | Core | 1 | Side | |
| 033544950449 | CORONAPREMIER12/12CAN | | 1 | Top 90 | |

| Name: 3_3 | W:30.00 in | D:22.00 in | | | |
|----------------|-------------------------|------------|----------|-------------|--|
| UPC (12 Digit) | Name | Ast | HFaci... | Orientat... | |
| 080660956954 | CORONA12/12CAN | Core | 1 | Top 90 | |
| 080660956152 | CORONA12/12BTL | Core | 1 | Side | |
| 030613000746 | BROOKLYNVARIETY12/12CAN | PRO... | 1 | Top 90 | |
| 723830212121 | LAGUNITASIPA12/12CAN | | 1 | Top 90 | |
| 723830000094 | LAGUNITASIPA6/12BTL | | 1 | Side | |

| Name: 3_4 | W:30.00 in | D:22.00 in | | | |
|----------------|------------------------------|------------|----------|-------------|--|
| UPC (12 Digit) | Name | Ast | HFaci... | Orientat... | |
| 087692000334 | ANGRYORCHARDCRISPAPPL... | | 1 | Side | |
| 082000723851 | SMIRNOFFICEORIGINAL6/11.2... | | 1 | Side | |
| 635985067443 | MIKESHARDBLACKCHERRYLE... | | 1 | Side | |
| 635985100621 | MIKESHARDLEMONADE6/11.2... | | 1 | Side | |
| 613008748333 | ARNOLDPALMERSPIKEDHALF... | | 1 | Side | |

| Name: 3_5 | W:30.00 in | D:12.00 in | | | |
|----------------|-----------------------------|------------|----------|-------------|--|
| UPC (12 Digit) | Name | Ast | HFaci... | Orientat... | |
| 018200209932 | BUDLIGHTLIMESTRAW-BER-RI... | | 1 | Side 90 | |
| 087692821021 | ANGRYORCHARDCRISPAPPL... | | 2 | Side | |
| 087692006602 | ANGRYORCHARDROSE6/12BTL | | 2 | Side | |

| Name: 4_1 | W:30.00 in | D:24.00 in | | | |
|----------------|----------------|------------|----------|-------------|--|
| UPC (12 Digit) | Name | Ast | HFaci... | Orientat... | |
| 080660954080 | CORONA24/7BTL | Core | 1 | Front | |
| 080660956800 | CORONA18/12BTL | Core | 2 | Side | |

| Name: 4_2 | W:30.00 in | D:22.00 in | | | |
|----------------|------------|------------|----------|-------------|--|
| UPC (12 Digit) | Name | Ast | HFaci... | Orientat... | |
| | | | | | |

Rite Aid
Store# 3774
BRONX , NY

FINAL

Cold

FMB always lead flow in relation to store traffic flow.
 Open a support ticket if planogram flow shown is reversed from actual store traffic flow

Segment 3 of 7 starting view

Shelf Schematic Report



| RITE AID_3774 | Store # 3774 | # of segments: 7 | | | |
|---------------|-----------------------|------------------|---|--------|--|
| 033544950425 | CORONAPREMIER12/12BTL | Core | 1 | Side | |
| 080660956053 | CORONA6/12BTL | Core | 1 | Front | |
| 080660956756 | CORONALIGHT12/12BTL | Core | 1 | Side | |
| 080660956213 | CORONALIGHT12/12CAN | | 1 | Top 90 | |

| Name: 4_3 | | W:30.00 in | D:22.00 in | | |
|----------------|----------------------------|------------|------------|-------------|--|
| UPC (12 Digit) | Name | Ast | HFaci... | Orientat... | |
| 071990095116 | BLUEMOONBELGIANWHITE6/1... | | 1 | Side | |
| 071990095161 | BLUEMOONBELGIANWHITE12/... | Core | 1 | Side | |
| 071990095611 | BLUEMOONMANGOWHEAT6/1... | | 1 | Side | |
| 080660956251 | CORONALIGHT6/12BTL | | 1 | Side | |
| 033544950517 | CORONAFAMILIAR6/12BTL | | 1 | Side | |

| Name: 4_4 | | W:30.00 in | D:22.00 in | | |
|----------------|---------------------------|------------|------------|-------------|--|
| UPC (12 Digit) | Name | Ast | HFaci... | Orientat... | |
| 071990095925 | BLUEMOONLIGHTSKY12/12CAN | PRO... | 1 | Front 90 | |
| 071990095321 | BLUEMOONSEASONAL6/12BTL | | 1 | Side | |
| 071990095543 | BLUEMOONBREWMASTERVERA... | | 1 | Side | |
| 736920111327 | GOOSEISLANDIPA6/12BTL | | 1 | Side | |
| 642860900245 | FOUNDERSALLDAYSESSIONI... | | 1 | Side | |

| Name: 4_5 | | W:30.00 in | D:12.00 in | | |
|----------------|----------------------------|------------|------------|-------------|--|
| UPC (12 Digit) | Name | Ast | HFaci... | Orientat... | |
| 087692300502 | SAMUELADAMSSEASONAL6/1... | | 2 | Side | |
| 087692001270 | SAMUELADAMSREBELIPA6/12... | | 2 | Side | |
| 869071000278 | MONTAUKWAVECHASER4/6/1... | | 1 | Front | |

Rite Aid
Store# 3774
BRONX , NY

FINAL

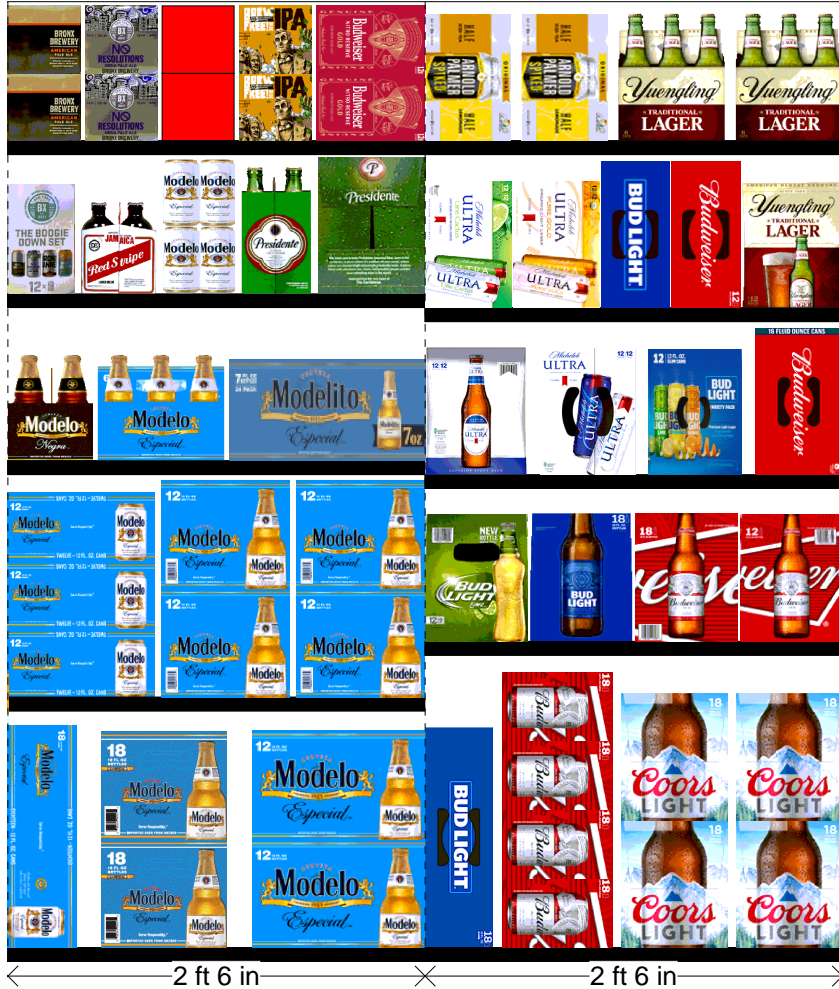
Cold

FMB always lead flow in relation to store traffic flow.
 Open a support ticket if planogram flow shown is reversed from actual store traffic flow

Segment 5 of 7 starting view

Shelf Schematic Report

RITE AID_3774 Store # 3774 # of segments: 7



| Name: 5_1 | | W:30.00 in | D:24.00 in | | |
|----------------|------------------------|------------|------------|-------------|--|
| UPC (12 Digit) | Name | Ast | HFaci... | Orientat... | |
| 080660957111 | MODELOESPECIAL18/12CAN | Core | 1 | Top 90 | |
| 033544950272 | MODELOESPECIAL18/12BTL | Core | 1 | Side | |
| 080660957579 | MODELOESPECIAL12/12BTL | Core | 1 | Front | |

| Name: 5_2 | | W:30.00 in | D:22.00 in | | |
|----------------|------------------------|------------|------------|-------------|--|
| UPC (12 Digit) | Name | Ast | HFaci... | Orientat... | |
| 080660957159 | MODELOESPECIAL12/12CAN | Core | 1 | Top | |
| 080660957579 | MODELOESPECIAL12/12BTL | Core | 2 | Side | |

| Name: 5_3 | | W:30.00 in | D:22.00 in | | |
|----------------|-----------------------|------------|------------|-------------|--|
| UPC (12 Digit) | Name | Ast | HFaci... | Orientat... | |
| 080660957852 | MODELONEGRA6/12BTL | | 1 | Side | |
| 080660957654 | MODELOESPECIAL6/12BTL | | 1 | Front | |
| 033544000212 | MODELOESPECIAL24/7BTL | PRO... | 1 | Front | |

| Name: 5_4 | | W:30.00 in | D:22.00 in | | |
|----------------|-------------------------|------------|------------|-------------|--|
| UPC (12 Digit) | Name | Ast | HFaci... | Orientat... | |
| 856632004288 | BRONXVARIETY12/12CAN | | 1 | Side | |
| 083820567939 | REDSTRIPELAGER6/11.2BTL | New | 1 | Side | |
| 080660957555 | MODELOESPECIAL6/12CAN | | 1 | Side | |
| 719057001310 | PRESIDENTE6/12BTL | | 1 | Side | |
| 719057001563 | PRESIDENTE12/12BTL | | 1 | Side | |

| Name: 5_5 | | W:30.00 in | D:12.00 in | | |
|----------------|----------------------------|------------|------------|-------------|--|
| UPC (12 Digit) | Name | Ast | HFaci... | Orientat... | |
| 856632004233 | BRONXAMERICANPALEALE6/1... | | 1 | Side | |
| 856632004332 | BRONXNORESOLUTIONS6/12... | | 1 | Side | |
| 856632004271 | BRONXSUMMER6/12CAN | | 1 | Side | |
| 859612001031 | 21STAMENDMENTBREWFREE... | | 1 | Side | |
| 018200202018 | BUDWEISERNITROGOLD12/12... | PRO... | 1 | Side 90 | |

| Name: 6_1 | | W:30.00 in | D:24.00 in | | |
|----------------|--------------------|------------|------------|-------------|--|
| UPC (12 Digit) | Name | Ast | HFaci... | Orientat... | |
| 018200532184 | BUDLIGHT18/12CAN | Core | 1 | Top 90 | |
| 018200112188 | BUD18/12CAN | Core | 1 | Side 90 | |
| 071990300784 | COORSLIGHT18/12BTL | Core | 2 | Side | |

Name: 6_2 W:30.00 in D:22.00 in

Rite Aid
Store# 3774
BRONX , NY

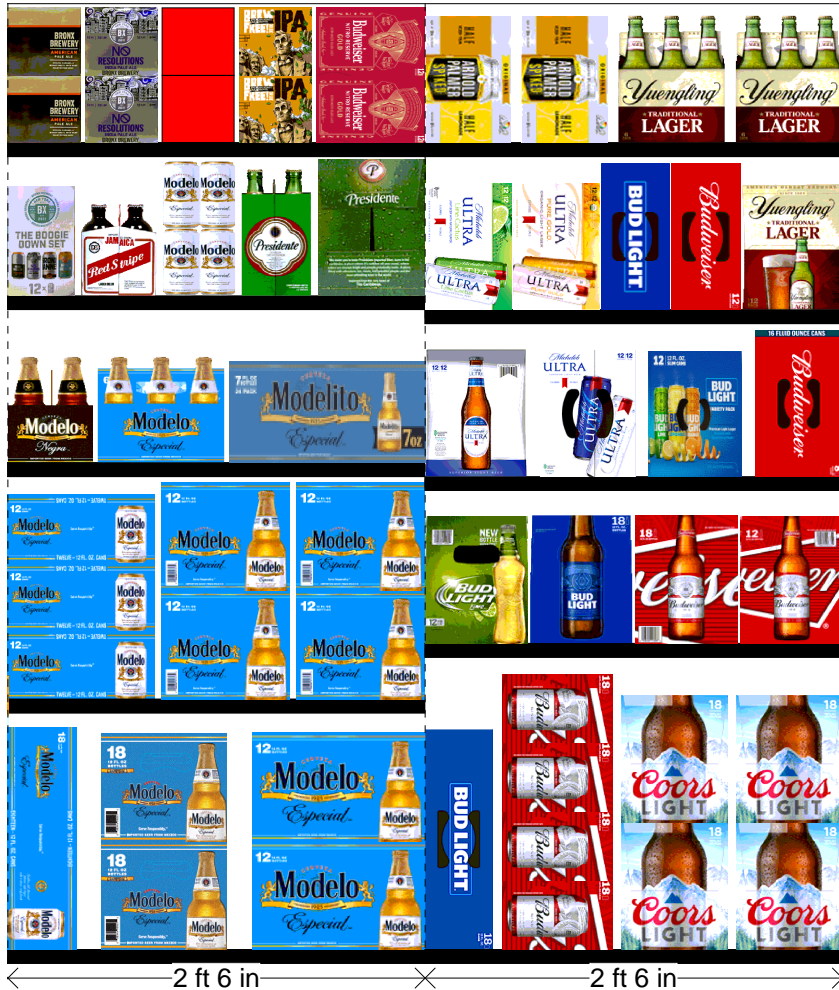
FINAL

Cold

FMB always lead flow in relation to store traffic flow.
 Open a support ticket if planogram flow shown is reversed from actual store traffic flow

Segment 5 of 7 starting view

Shelf Schematic Report



| RITE AID 3774 Store # 3774 # of segments: 7 | | Ast | HFaci... | Orientat... |
|---|----------------------|-----|----------|-------------|
| UPC (12 Digit) | Name | | | |
| 018200149900 | BUDLIGHTLIME12/12BTL | | 1 | Side |
| 018200533082 | BUDLIGHT18/12BTL | | 1 | Side |
| 018200113086 | BUD18/12BTL | | 1 | Side |
| 018200007712 | BUD12/12BTL | | 1 | Side |

| Name: 6_3 W:30.00 in D:22.00 in | | Ast | HFaci... | Orientat... |
|---------------------------------|------------------------------------|-----|----------|-------------|
| UPC (12 Digit) | Name | | | |
| 018200059902 | MICHELOBULTRA12/12BTL | | 1 | Side |
| 018200069918 | MICHELOBULTRA12/12CAN | | 1 | Top 90 |
| 018200202100 | BUDLIGHTPEELSVARIETY12/1... PRO... | | 1 | Top 90 |
| 018200089817 | BUD8/16CAN | | 1 | Top 90 |

| Name: 6_4 W:30.00 in D:22.00 in | | Ast | HFaci... | Orientat... |
|---------------------------------|---------------------------|--------|----------|-------------|
| UPC (12 Digit) | Name | | | |
| 018200169847 | MICHELOBULTRALIMEACTU... | PRO... | 1 | Front 90 |
| 018200201448 | MICHELOBULTRAPUREGOLD1... | PRO... | 1 | Front 90 |
| 018200530470 | BUDLIGHT12/12CAN | Core | 1 | Top 90 |
| 018200110474 | BUD12/12CAN | Core | 1 | Top 90 |
| 089924278962 | YUENGLINGLAGER12/12BTL | | 1 | Side |

| Name: 6_5 W:30.00 in D:12.00 in | | Ast | HFaci... | Orientat... |
|---------------------------------|---------------------------|-----|----------|-------------|
| UPC (12 Digit) | Name | | | |
| 613008752200 | ARNOLDPALMERSPIKEDHALF... | New | 2 | Front 90 |
| 089924278917 | YUENGLINGLAGER6/12BTL | | 2 | Front |

Rite Aid
Store# 3774
BRONX, NY

Cold

FMB always lead flow in relation to store traffic flow.
Open a support ticket if planogram flow shown is reversed from actual store traffic flow



4 ft



4 ft

Rite Aid
Store# 3774
BRONX , NY

FINAL

Cold

FMB always lead flow in relation to store traffic flow.
 Open a support ticket if planogram flow shown is reversed from actual store traffic flow

Segment 1 of 2 starting view

Shelf Schematic Report

RITE AID_3774 Store # 3774 # of segments: 2



| Name: 1_1 | | W:96.00 in | D:14.00 in | | |
|----------------|-----------------------------|------------|------------|-------------|--|
| UPC (12 Digit) | Name | Ast | HFaci... | Orientat... | |
| 635985548904 | WHITECLAWVARIETY12/12CA... | Core | 1 | Side | |
| 635985260899 | WHITECLAWBLACKCHERRY12... | | 1 | Side | |
| 087692006862 | TRULYVARIETYBERRY12/12C... | Core | 1 | Side | |
| 087692008040 | TRULYVARIETYTROPICAL12/1... | | 1 | Side | |
| 041827701121 | ARCTICCHILLHARDSELTZERV... | PRO... | 1 | Side | |
| 786150000144 | STELLAARTOIS12/11.2BTL | Core | 1 | Side | |
| 080660956152 | CORONA12/12BTL | Core | 3 | Front | |
| 033544950425 | CORONAPREMIER12/12BTL | Core | 1 | Side | |
| 071990300784 | COORSLIGHT18/12BTL | Core | 1 | Side | |
| 071990300692 | COORSLIGHT12/12BTL | Core | 1 | Side | |

| Name: 1_2 | | W:96.00 in | D:14.00 in | | |
|----------------|----------------------------|------------|------------|-------------|--|
| UPC (12 Digit) | Name | Ast | HFaci... | Orientat... | |
| 635985100331 | WHITECLAWMANGO12/12CAN | | 1 | Front 90 | |
| 635985200253 | WHITECLAWBLACKCHERRY6/... | | 1 | Top 90 | |
| 087692006787 | TRULYWILDBERRY6/12CAN | | 1 | Top 90 | |
| 082000781424 | SMIRNOFFSPIKEDSPARKLING... | | 1 | Top 90 | |
| 082488123006 | BECKS12/12BTL | Core | 1 | Front | |
| 072890000200 | HEINEKEN12/12CAN | Core | 1 | Top 90 | |
| 072890001528 | HEINEKEN18/12BTL | New | 2 | Side | |
| 072890001597 | HEINEKENLIGHT12/12BTL | Core | 1 | Front | |
| 033544950531 | CORONAFAMILIAR12/12BTL | | 1 | Front | |
| 033544950425 | CORONAPREMIER12/12BTL | Core | 1 | Side | |
| 080660956756 | CORONALIGHT12/12BTL | Core | 1 | Side | |
| 719057001563 | PRESIDENTE12/12BTL | | 1 | Side | |

| Name: 1_3 | | W:96.00 in | D:14.00 in | | |
|----------------|-------------------------------|------------|------------|-------------|--|
| UPC (12 Digit) | Name | Ast | HFaci... | Orientat... | |
| 635985200284 | WHITECLAWRUBYGRAPEFRUI... | | 1 | Side | |
| 635985260875 | WHITECLAWMANGO6/12CAN | | 1 | Side | |
| 635985260660 | WHITECLAWRASPBERRY6/12... | | 1 | Side | |
| 635985025986 | WHITECLAWNATURALLIME6/1... | | 1 | Side | |
| 087692007814 | TRULYROSE6/12CAN | | 1 | Side | |
| 613008748333 | ARNOLDPALMERSPIKEDHALF... | | 1 | Side | |
| 018200202506 | BUDLIGHTPLATINUMSELTZER... | New | 1 | Front | |
| 018200199875 | BUDLIGHTLIMELIME-A-RITA12/... | | 1 | Top 90 | |
| 087692011033 | SAMUELADAMSSEASONAL12/... | | 1 | Front | |
| 071990170523 | BLUEMOONBELGIANWHITE15... | | 1 | Side 90 | |

Rite Aid
Store# 3774
BRONX , NY

FINAL

Cold

FMB always lead flow in relation to store traffic flow.
 Open a support ticket if planogram flow shown is reversed from actual store traffic flow

Segment 1 of 2 starting view

Shelf Schematic Report

| RITE AID 3774 | Store # 3774 | # of segments: 2 | | | |
|---------------|----------------------------|------------------|---|-------|--|
| 071990095161 | BLUEMOONBELGIANWHITE12/... | Core | 1 | Front | |
| 071990095369 | BLUEMOONSEASONAL12/12BTL | | 1 | Front | |
| 033544000182 | CORONAPREMIER18/12BTL | | 1 | Side | |
| 719057001563 | PRESIDENTE12/12BTL | | 1 | Front | |

| Name: 1 4 | W:96.00 in | D:14.00 in | | | |
|----------------|-------------------------------|------------|----------|-------------|--|
| UPC (12 Digit) | Name | Ast | HFaci... | Orientat... | |
| 034100012229 | MOVVARIETY4/8.4CAN | | 2 | Front 90 | |
| 033544000137 | CORONAVARIETYREFRESCA1... | | 1 | Side | |
| 033544950678 | CORONAREFRESCAGUAVALLI... | | 1 | Side | |
| 033544950630 | CORONAREFRESCAPASSION... | | 1 | Side | |
| 080432802908 | SEAGRAMSECAPESVARIETY... | | 1 | Front | |
| 754527009946 | NEWBELGIUMVOODOOROTAT... | | 1 | Side | |
| 087692100140 | SAMUELADAMS BOSTON LAGE... | | 1 | Front | |
| 087692100126 | SAMUELADAMS BOSTON LAGE... | | 2 | Side | |
| 723830000209 | LAGUNITAS LITTLE SUMPING 1... | | 2 | Side | |
| 786150002001 | STELLAARTOIS 6/12CAN | | 1 | Side | |
| 018200110474 | BUD 12/12CAN | Core | 1 | Top 90 | |
| 034100015091 | HIGHLIFE 12/12BTL | Core | 1 | Front | |

