

Rite Aid
Store# 2010
NEW YORK, NY

Cold

FMB always lead flow in relation to store traffic flow.
Open a support ticket if planogram flow shown is reversed from actual store traffic flow



Rite Aid
Store# 2010
NEW YORK, NY

FINAL

Cold

FMB always lead flow in relation to store traffic flow.
 Open a support ticket if planogram flow shown is reversed from actual store traffic flow

Segment 1 of 9 starting view

Shelf Schematic Report

RITE AID_2010 Store # 2010 # of segments: 9



Name: 1_1		W:30.00 in	D:26.00 in		
UPC (12 Digit)	Name	Ast	HFaci...	Orientat...	
018200200779	NATURALLIGHT15/12CAN	Core	1	Side	
034100015091	HIGHLIFE12/12BTL	Core	1	Side	
034100573065	LITE24/12CAN		1	Side	
071990300692	COORSLIGHT12/12BTL	Core	1	Front	

Name: 1_2		W:30.00 in	D:22.00 in		
UPC (12 Digit)	Name	Ast	HFaci...	Orientat...	
018200284434	NATURALICE15/12CAN	Core	1	Side 90	
034100016364	HIGHLIFE12/12CAN		1	Top 90	
034100573409	LITE18/12CAN	Core	1	Side 90	
071990000486	COORSLIGHT12/12CAN	New	1	Top 90	

Name: 1_3		W:30.00 in	D:22.00 in		
UPC (12 Digit)	Name	Ast	HFaci...	Orientat...	
071990480455	KEYSTONELIGHT15/12CAN		1	Side 90	
089924278986	YUENGLINGLAGER12/12CAN		1	Side 90	
034100576363	LITE12/12CAN		1	Top 90	
071990301040	COORSLIGHT9/16BTL(AL)		1	Front	

Name: 1_4		W:30.00 in	D:22.00 in		
UPC (12 Digit)	Name	Ast	HFaci...	Orientat...	
022100001701	PABST12/12CAN		1	Side 90	
089924278962	YUENGLINGLAGER12/12BTL		1	Side	
034100575090	LITE12/12BTL		1	Side	
071990300050	COORSLIGHT6/12BTL		1	Side	

Name: 1_5		W:30.00 in	D:12.00 in		
UPC (12 Digit)	Name	Ast	HFaci...	Orientat...	
071439344508	ROLLINGROCK12/12CAN		1	Side 90	
071439344508	ROLLINGROCK12/12CAN		1	Top 90	
070310001417	NARRAGANSETT12/12CAN		1	Side 90	
089924278917	YUENGLINGLAGER6/12BTL		1	Front	

Name: 2_1		W:30.00 in	D:26.00 in		
UPC (12 Digit)	Name	Ast	HFaci...	Orientat...	
071990300173	COORSLIGHT18/12CAN	Core	1	Side 90	
071990300784	COORSLIGHT18/12BTL	Core	1	Front	
071990316006	COORSLIGHT24/12CAN		1	Side	

Rite Aid
Store# 2010
NEW YORK, NY

FINAL

Cold

FMB always lead flow in relation to store traffic flow.
 Open a support ticket if planogram flow shown is reversed from actual store traffic flow

Segment 1 of 9 starting view

Shelf Schematic Report

RITE AID_2010 Store # 2010 # of segments: 9

Name: 2_2		W:30.00 in		D:22.00 in	
UPC (12 Digit)	Name	Ast	HFaci...	Orientat...	
071990300173	COORSLIGHT18/12CAN	Core	2	Top 90	
018200112188	BUD18/12CAN	Core	1	Side 90	
018200532184	BUDLIGHT18/12CAN	Core	1	Top 90	
018200967214	MICHELOBULTRA18/12CAN		1	Side	

Name: 2_3		W:30.00 in		D:22.00 in	
UPC (12 Digit)	Name	Ast	HFaci...	Orientat...	
018200110474	BUD12/12CAN	Core	1	Top 90	
018200530470	BUDLIGHT12/12CAN	Core	1	Top 90	
018200202100	BUDLIGHTPEELSVARIETY12/1...	PRO...	1	Front 90	
018200169847	MICHELOBULTRALIMECACTU...	PRO...	1	Front 90	
613008752200	ARNOLDPALMERSPIKEDHALF...	New	1	Front 90	

Name: 2_4		W:30.00 in		D:12.00 in	
UPC (12 Digit)	Name	Ast	HFaci...	Orientat...	
018200201448	MICHELOBULTRAPUREGOLD1...	PRO...	2	Top 90	
018200059902	MICHELOBULTRA12/12BTL		2	Side	



Rite Aid
Store# 2010
NEW YORK , NY

FINAL

Cold

FMB always lead flow in relation to store traffic flow.
 Open a support ticket if planogram flow shown is reversed from actual store traffic flow

Segment 3 of 9 starting view

Shelf Schematic Report

RITE AID_2010 Store # 2010 # of segments: 9



Name:	W:30.00 in	D:26.00 in			
UPC (12 Digit)	Name	Ast	HFaci...	Orientat...	
080660957579	MODELOESPECIAL12/12BTL	Core	3	Side	

Name:	W:30.00 in	D:22.00 in			
UPC (12 Digit)	Name	Ast	HFaci...	Orientat...	
080660957111	MODELOESPECIAL18/12CAN	Core	1	Top	
080660957159	MODELOESPECIAL12/12CAN	Core	1	Side 90	
080660957159	MODELOESPECIAL12/12CAN	Core	1	Top 90	

Name:	W:30.00 in	D:22.00 in			
UPC (12 Digit)	Name	Ast	HFaci...	Orientat...	
033544950272	MODELOESPECIAL18/12BTL	Core	1	Front	
080660957159	MODELOESPECIAL12/12CAN	Core	1	Front	

Name:	W:30.00 in	D:22.00 in			
UPC (12 Digit)	Name	Ast	HFaci...	Orientat...	
089826900336	TECATE12/12CAN		1	Top 90	
719057001563	PRESIDENTE12/12BTL		1	Side	
033544000212	MODELOESPECIAL24/7BTL	PRO...	1	Front	

Name:	W:30.00 in	D:12.00 in			
UPC (12 Digit)	Name	Ast	HFaci...	Orientat...	
080660957852	MODELONEGRA6/12BTL		2	Side	
080660957654	MODELOESPECIAL6/12BTL		2	Side	
080660957555	MODELOESPECIAL6/12CAN		1	Side	

Name:	W:30.00 in	D:26.00 in			
UPC (12 Digit)	Name	Ast	HFaci...	Orientat...	
080660956152	CORONA12/12BTL	Core	2	Front	
080660956152	CORONA12/12BTL	Core	1	Side	

Name:	W:30.00 in	D:22.00 in			
UPC (12 Digit)	Name	Ast	HFaci...	Orientat...	
080660956152	CORONA12/12BTL	Core	2	Front	
080660956152	CORONA12/12BTL	Core	1	Side	

Name:	W:30.00 in	D:22.00 in			
UPC (12 Digit)	Name	Ast	HFaci...	Orientat...	
080660956954	CORONA12/12CAN	Core	1	Top 90	

**Rite Aid
Store# 2010
NEW YORK , NY**

FINAL

Cold

FMB always lead flow in relation to store traffic flow.
Open a support ticket if planogram flow shown is reversed from actual store traffic flow

Segment 3 of 9 starting view

Shelf Schematic Report

RITE AID_2010	Store # 2010	# of segments: 9		
080660956152	CORONA12/12BTL	Core	3	Side

Name: 4 4	W:30.00 in	D:12.00 in		
UPC (12 Digit)	Name	Ast	HFaci...	Orientat...
080660956053	CORONA6/12BTL	Core	2	Front
817904000834	ELYSIANSPACEDUSTIPA6/12B...		1	Front
681745002513	BLUEPOINTPINSTRIPEPILS6/1...		1	Side



Rite Aid
Store# 2010
NEW YORK, NY

FINAL

Cold

FMB always lead flow in relation to store traffic flow.
 Open a support ticket if planogram flow shown is reversed from actual store traffic flow

Segment 5 of 9 starting view

Shelf Schematic Report

RITE AID_2010 Store # 2010 # of segments: 9



Name: 5_1	W:30.00 in	D:26.00 in			
UPC (12 Digit)	Name	Ast	HFaci...	Orientat...	
080660956800	CORONA18/12BTL	Core	1	Front	
080660954080	CORONA24/7BTL	Core	1	Front	

Name: 5_2	W:30.00 in	D:22.00 in			
UPC (12 Digit)	Name	Ast	HFaci...	Orientat...	
080660956152	CORONA12/12BTL	Core	2	Front	
080660954080	CORONA24/7BTL	Core	1	Side	

Name: 5_3	W:30.00 in	D:22.00 in			
UPC (12 Digit)	Name	Ast	HFaci...	Orientat...	
033544950425	CORONAPREMIER12/12BTL	Core	1	Side	
033544950449	CORONAPREMIER12/12CAN		1	Top 90	
080660956756	CORONALIGHT12/12BTL	Core	1	Side	
080660956251	CORONALIGHT6/12BTL		1	Front	

Name: 5_4	W:30.00 in	D:12.00 in			
UPC (12 Digit)	Name	Ast	HFaci...	Orientat...	
859612001291	21STAMENDMENTVARIETY12/...		1	Side 90	
862737000063	MONTAUKSUMMER6/12CAN(W...		1	Side	
869071000278	MONTAUKWAVECHASER4/6/1...		1	Side	
859612001031	21STAMENDMENTBREWFREE...		1	Side	
856632004332	BRONXNORESOLUTIONS6/12...		1	Side	

Name: 6_1	W:30.00 in	D:26.00 in			
UPC (12 Digit)	Name	Ast	HFaci...	Orientat...	
080660954080	CORONA24/7BTL	Core	1	Side	
082488123006	BECKS12/12BTL	Core	1	Front	
786150000144	STELLAARTOIS12/11.2BTL	Core	1	Front	

Name: 6_2	W:30.00 in	D:22.00 in			
UPC (12 Digit)	Name	Ast	HFaci...	Orientat...	
723830212121	LAGUNITASIPA12/12CAN		1	Side	
082488123815	BECKS12/12CAN		1	Side	
786150000168	STELLAARTOIS12/11.2CAN	Core	1	Front 90	
786150000014	STELLAARTOIS6/11.2BTL	Core	1	Side	
786150002001	STELLAARTOIS6/12CAN		1	Top 90	

Name: 6_3	W:30.00 in	D:22.00 in			
-----------	------------	------------	--	--	--

Rite Aid
Store# 2010
NEW YORK, NY

FINAL

Cold

FMB always lead flow in relation to store traffic flow.
 Open a support ticket if planogram flow shown is reversed from actual store traffic flow

Segment 5 of 9 starting view

Shelf Schematic Report

UPC (12 Digit)	Name	Ast	HFaci...	Orientat...
723830000094	LAGUNITASIPA6/12BTL		1	Front
723830000209	LAGUNITASLITTLESUMPIN6/1...		1	Side
638489000299	DOGFISHHEAD60MINUTEIPA6/...		1	Side
786243119906	FLYINGDOGRAGINGBITCH6/12...		1	Side
071990095611	BLUEMOONMANGOWHEAT6/1...		1	Side

Name: 6_4		W:30.00 in	D:22.00 in		
UPC (12 Digit)	Name	Ast	HFaci...	Orientat...	
816014020800	SOUTHERNTIEROVERPACKD1...		1	Top 90	
642860900245	FOUNDERSALLDAYSESSIONI...		1	Top 90	
071990170523	BLUEMOONBELGIANWHITE15...		1	Top 90	
071990095161	BLUEMOONBELGIANWHITE12/...	Core	1	Side	
071990095116	BLUEMOONBELGIANWHITE6/1...		1	Side	

Name: 6_5		W:30.00 in	D:12.00 in		
UPC (12 Digit)	Name	Ast	HFaci...	Orientat...	
860367000729	SLOOPJUICEBOMBIPA6/12CAN	PRO...	1	Side	
859093002442	SIXPOINTTHECRISP6/12CAN		1	Side	
859093002435	SIXPOINTBENGALIIPA6/12CAN		1	Side	
071990095925	BLUEMOONLIGHTSKY12/12CAN	PRO...	2	Front 90	



Rite Aid
Store# 2010
NEW YORK, NY

FINAL

Cold

FMB always lead flow in relation to store traffic flow.
 Open a support ticket if planogram flow shown is reversed from actual store traffic flow

Segment 7 of 9 starting view

Shelf Schematic Report

RITE AID_2010 Store # 2010 # of segments: 9

Name: 7_1	W:30.00 in	D:26.00 in		
UPC (12 Digit)	Name	Ast	HFaci...	Orientat...
072890001528	HEINEKEN18/12BTL	New	1	Side
072890000163	HEINEKEN12/12BTL	Core	2	Front

Name: 7_2	W:30.00 in	D:22.00 in		
UPC (12 Digit)	Name	Ast	HFaci...	Orientat...
083820567939	REDSTRIPELAGER6/11.2BTL	New	1	Side
083820123937	GUINNESSEXTRASTOUT6/12B...	Core	1	Side
181954000046	PERONI12/11.2BTL		1	Side
181954000022	PERONI6/11.2BTL		1	Side
072890001597	HEINEKENLIGHT12/12BTL	Core	1	Side

Name: 7_3	W:30.00 in	D:22.00 in		
UPC (12 Digit)	Name	Ast	HFaci...	Orientat...
887151000949	CONEYISLANDMERMAIDPILS...		1	Side
087692300502	SAMUELADAMSSEASONAL6/1...		1	Side
041827000767	HARPOONIPA6/12BTL		1	Side
041827001467	HARPOONSEASONAL6/12BTL		1	Side
754527004217	NEWBELGIUMWOODOORANG...		1	Side
740522100832	BELLSTWOHEARTEDALE6/12B...		1	Side

Name: 7_4	W:30.00 in	D:22.00 in		
UPC (12 Digit)	Name	Ast	HFaci...	Orientat...
4005249004181	VELTINSPILSENER4/16.9CAN		1	Front
030613000531	BROOKLYNSEASONAL6/12BTL		1	Side
030613019519	BROOKLYNBELAIROUR6/12B...		1	Side
083783375213	SIERRANEVADAPALEALE6/12...		1	Side
083783331004	SIERRANEVADATORPEDOIPA...		1	Side

Name: 7_5	W:30.00 in	D:12.00 in		
UPC (12 Digit)	Name	Ast	HFaci...	Orientat...
030613000302	BROOKLYNLAGER6/12CAN		1	Side
736920111327	GOOSEISLANDIPA6/12BTL		1	Front
817606010209	CAPTAINLAWRENCEIPA6/12BTL		1	Front
636251776120	STONEIPA6/12BTL		1	Front

Name: 8_1	W:30.00 in	D:26.00 in		
UPC (12 Digit)	Name	Ast	HFaci...	Orientat...
072890000163	HEINEKEN12/12BTL	Core	1	Front



2 ft 6 in

2 ft 6 in

Rite Aid
Store# 2010
NEW YORK, NY

FINAL

Cold

FMB always lead flow in relation to store traffic flow.
 Open a support ticket if planogram flow shown is reversed from actual store traffic flow

Segment 7 of 9 starting view

Shelf Schematic Report



RITE AID_2010	Store # 2010	# of segments: 9		
033544000137	CORONAVARIETYREFRESCA1...		1	Front 90
635985800064	WHITECLAWVARIETY12/12CA...	PRO...	1	Side
635985548904	WHITECLAWVARIETY12/12CA...	Core	1	Side

Name: 8_2		W:30.00 in	D:22.00 in	
UPC (12 Digit)	Name	Ast	HFaci...	Orientat...
072890000200	HEINEKEN12/12CAN	Core	1	Top 90
0728900005298	HEINEKEN12/8CAN		1	Side
033544950678	CORONAREFRESGAGUAVALI...		1	Side
087692006787	TRULYWILDBERRY6/12CAN		1	Side
635985200253	WHITECLAWBLACKCHERRY6/...		1	Side
635985200284	WHITECLAWRUBYGRAPEFRUI...		1	Side

Name: 8_3		W:30.00 in	D:22.00 in	
UPC (12 Digit)	Name	Ast	HFaci...	Orientat...
072890000118	HEINEKEN6/12BTL	Core	1	Side
0728900006219	HEINEKEN0.0NEARBEER6/12B...		1	Side
033544000434	CORONASELTZERVARIETY12/...	PRO...	1	Top 90
087692006862	TRULYVARIETYBERRY12/12C...	Core	1	Front 90
635985100331	WHITECLAWMANGO12/12CAN		1	Front 90

Name: 8_4		W:30.00 in	D:22.00 in	
UPC (12 Digit)	Name	Ast	HFaci...	Orientat...
018200201790	NATURALLIGHTSELTZERVARI...	PRO...	1	Top 90
018200202087	BUDLIGHTSELTZERVARIETY1...	PRO...	1	Front 90
071990000158	COORSHARDSELTZERVARIET...	New	1	Front 90
034100012328	VIZZYVARIETY12/12CAN(A)	PRO...	1	Front 90
087692004240	TRULYVARIETYCITRUS12/12C...		1	Front 90

Name: 8_5		W:30.00 in	D:12.00 in	
UPC (12 Digit)	Name	Ast	HFaci...	Orientat...
034100012229	MOVOVARIETY4/8.4CAN		2	Front
087692007814	TRULYROSE6/12CAN		2	Side
087692004172	TRULYCOLIMALIME6/12CAN		2	Top 90

Rite Aid
Store# 2010
NEW YORK , NY

FINAL

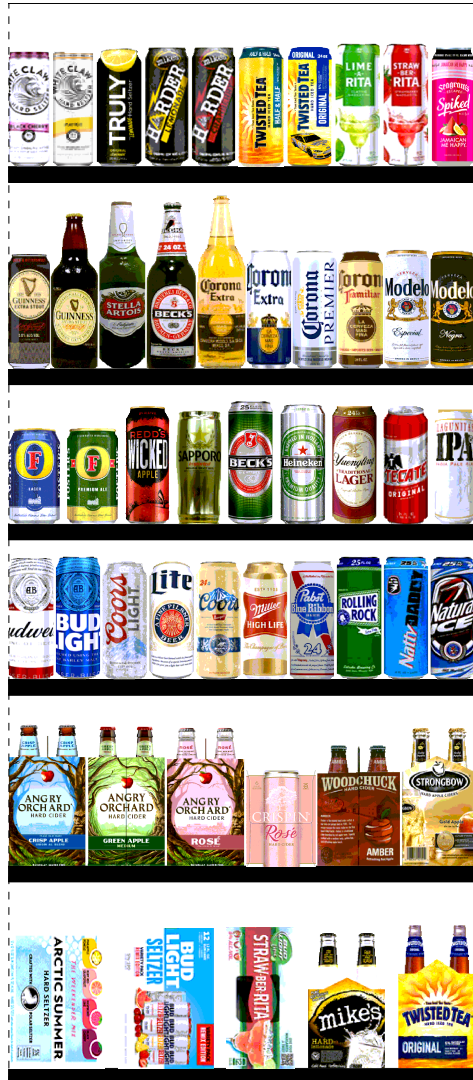
Cold

FMB always lead flow in relation to store traffic flow.
 Open a support ticket if planogram flow shown is reversed from actual store traffic flow

Segment 9 of 9 starting view

Shelf Schematic Report

RITE AID_2010 Store # 2010 # of segments: 9



← 2 ft 6 in →

Name: 9_1		W:30.00 in	D:26.00 in		
UPC (12 Digit)	Name	Ast	HFaci...	Orientat...	
041827701121	ARCTICCHILLHARDSELTZERV...	PRO...	1	Front	90
018200202179	BUDLIGHTSELTZERVARIETYR...	New	1	Front	90
018200209932	BUDLIGHTLIMESTRAW-BER-RI...		1	Top	90
635985100621	MIKESHARDLEMONADE6/11.2...		1	Side	
087692831020	TWISTEDTEAORIGINAL6/12BTL		1	Side	

Name: 9_2		W:30.00 in	D:22.00 in		
UPC (12 Digit)	Name	Ast	HFaci...	Orientat...	
087692821021	ANGRYORCHARDCRISPAPPL...		1	Side	
087692001492	ANGRYORCHARDGREENAPPL...		1	Side	
087692006602	ANGRYORCHARDROSE6/12BTL		1	Side	
894137002712	CRISPINROSE6/12CAN		1	Side	
014974500091	WOODCHUCKAMBER6/12BTL		1	Side	
088345101514	STRONGBOWGOLD6/11.2BTL		1	Side	

Name: 9_3		W:30.00 in	D:22.00 in		
UPC (12 Digit)	Name	Ast	HFaci...	Orientat...	
018200250002	BUD1/25CAN		1	Front	
018200250019	BUDLIGHT1/25CAN		1	Front	
071990300654	COORSLIGHT1/24CAN		1	Front	
034100003555	LITE1/24CAN		1	Front	
071990100711	COORSBANQUET1/24CAN		1	Front	
034100000059	HIGHLIFE1/24CAN		1	Front	
022100000049	PABST1/24CAN		1	Front	
071439006017	ROLLINGROCK1/25CAN		1	Front	
018200250132	NATTYDADDY1/25CAN		1	Front	
018200250088	NATURALICE1/25CAN		1	Front	

Name: 9_4		W:30.00 in	D:22.00 in		
UPC (12 Digit)	Name	Ast	HFaci...	Orientat...	
070897013315	FOSTERS1/25.4CAN		1	Front	
070897183315	FOSTERSPREMIUM1/25.4CAN		1	Front	
034100003234	REDDSWICKED1/24CAN		1	Front	
087975026501	SAPPORO1/22CAN		1	Front	
018200250286	BECKS1/25.4CAN		1	Front	
072890001191	HEINEKEN1/24CAN		1	Front	
089924600244	YUENGLINGLAGER1/24CAN		1	Front	
089826001422	TECATE1/24CAN		1	Front	

Rite Aid
Store# 2010
NEW YORK , NY

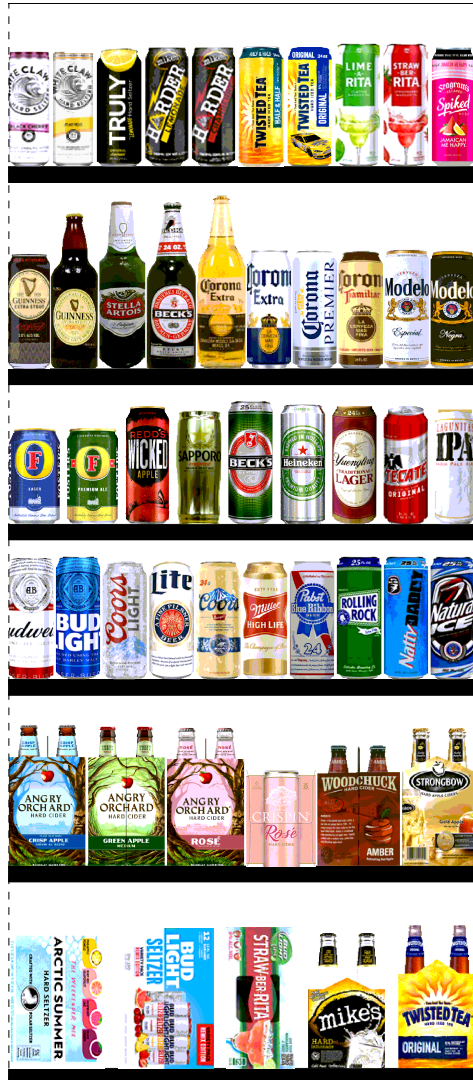
FINAL

Cold

FMB always lead flow in relation to store traffic flow.
 Open a support ticket if planogram flow shown is reversed from actual store traffic flow

Segment 9 of 9 starting view

Shelf Schematic Report



2 ft 6 in

RITE AID_2010	Store # 2010	# of segments: 9
723830011922	LAGUNITASIPA1/19.2CAN	PRO... 1 Front

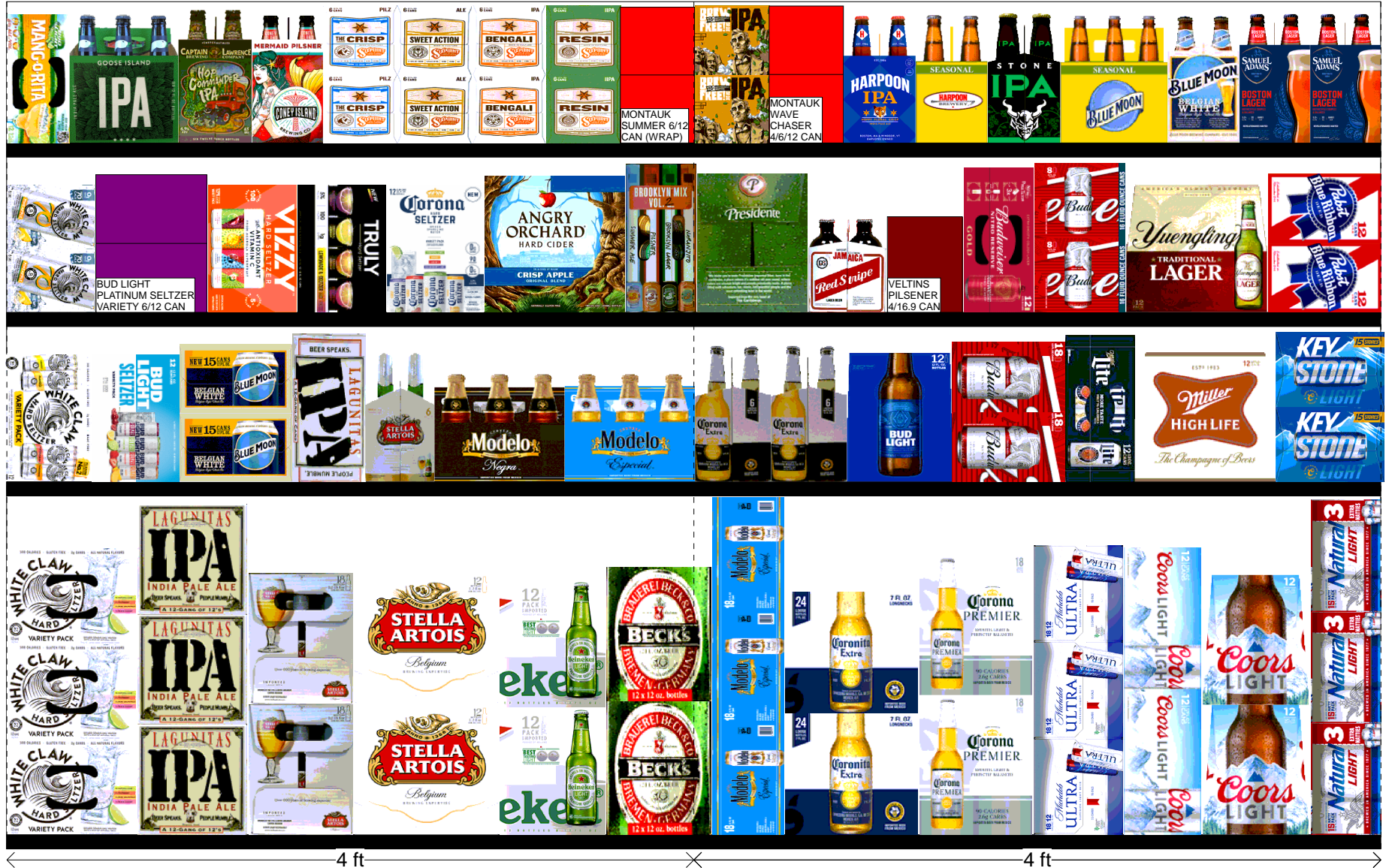
Name: 9_5		W:30.00 in	D:22.00 in		
UPC (12 Digit)	Name	Ast	HFaci...	Orientat...	
083820124620	GUINNESSEXTRASTOUT1/19.2...	PRO...	1	Front	
083820234800	GUINNESSEXTRASTOUT1/22B...		1	Front	
786150000571	STELLAARTOIS1/22BTL		1	Front	
082488000062	BECKS1/24BTL		1	Front	
080660956411	CORONA1/24BTL		1	Front	
080660956435	CORONA1/24CAN		1	Front	
033544950470	CORONAPREMIER1/24CAN		1	Front	
033544000250	CORONAFAMILIAR1/24CAN	PRO...	1	Front	
080660957210	MODELOESPECIAL1/24CAN		1	Front	
033544950616	MODELONEGRA1/24CAN		1	Front	

Name: 9_6		W:30.00 in	D:12.00 in		
UPC (12 Digit)	Name	Ast	HFaci...	Orientat...	
635985260387	WHITECLAWBLACKCHERRY1/...		1	Front	
635985260394	WHITECLAWMANGO1/19.2CAN	PRO...	1	Front	
087692010142	TRULYLEMONADE1/24CAN		1	Front	
635985245834	MIKESHARDERLEMONADE1/2...	New	1	Front	
635985249856	MIKESHARDERCRANBERRYL...	PRO...	1	Front	
087692752318	TWISTEDTEAHALFANDHALF1/...		1	Front	
087692832317	TWISTEDTEAORIGINAL1/24CAN		1	Front	
018200250149	BUDLIGHTLIMELIME-A-RITA1/2...		1	Front	
018200255052	BUDLIGHTLIMESTRAW-BER-RI...		1	Front	
070310014837	SEAGRAMSESCAPESSPIKEDJ...		1	Front	

Rite Aid Store# 2010 NEW YORK, NY

Warm

FMB always lead flow in relation to store traffic flow.
Open a support ticket if planogram flow shown is reversed from actual store traffic flow



Rite Aid
Store# 2010
NEW YORK , NY

FINAL

Warm

FMB always lead flow in relation to store traffic flow.
 Open a support ticket if planogram flow shown is reversed from actual store traffic flow

Segment 1 of 2 starting view

Shelf Schematic Report

RITE AID_2010 Store # 2010 # of segments: 2



Name: 1_1		W:96.00 in	D:16.00 in		
UPC (12 Digit)	Name	Ast	HFaci...	Orientat...	
635985548904	WHITECLAWVARIETY12/12CA...	Core	1	Top	
723830100091	LAGUNITASIPA12/12BTL		1	Side	
786150001493	STELLAARTOIS18/11.2BTL		1	Side	
786150000144	STELLAARTOIS12/11.2BTL	Core	1	Front	
072890001597	HEINEKENLIGHT12/12BTL	Core	1	Side	
082488123006	BECKS12/12BTL	Core	1	Side	
080660957111	MODELOESPECIAL18/12CAN	Core	1	Side	
080660954080	CORONA24/7BTL	Core	1	Side	
033544000182	CORONAPREMIER18/12BTL		1	Side	
018200967214	MICHELOBULTRA18/12CAN		1	Side	
071990000486	COORSLIGHT12/12CAN	New	1	Top 90	
071990300692	COORSLIGHT12/12BTL	Core	1	Side	
018200200779	NATURALLIGHT15/12CAN	Core	1	Side	

Name: 1_2		W:96.00 in	D:14.00 in		
UPC (12 Digit)	Name	Ast	HFaci...	Orientat...	
635985800064	WHITECLAWVARIETY12/12CA...	PRO...	1	Front 90	
018200202087	BUDLIGHTSELTZERVARIETY1...	PRO...	1	Front 90	
071990170523	BLUEMOONBELGIANWHITE15...		1	Side 90	
723830212121	LAGUNITASIPA12/12CAN		1	Top 90	
786150000014	STELLAARTOIS6/11.2BTL	Core	1	Side	
080660957852	MODELONEGRA6/12BTL		1	Front	
080660957654	MODELOESPECIAL6/12BTL		1	Front	
080660956053	CORONA6/12BTL	Core	2	Side	
018200007699	BUDLIGHT12/12BTL		1	Side	
018200112188	BUD18/12CAN	Core	1	Side 90	
034100576363	LITE12/12CAN		1	Top 90	
034100015091	HIGHLIFE12/12BTL	Core	1	Front	
071990480455	KEYSTONELIGHT15/12CAN		1	Side 90	

Name: 1_3		W:96.00 in	D:14.00 in		
UPC (12 Digit)	Name	Ast	HFaci...	Orientat...	
635985000211	WHITECLAW70PINEAPPLE6/12...	PRO...	1	Side 90	
018200202506	BUDLIGHTPLATINUMSELTZER...	New	1	Front	
034100012328	VIZZYVARIETY12/12CAN(A)	PRO...	1	Front 90	
087692009917	TRULYLEMONADEVARIETY12/...	PRO...	1	Front 90	
033544000434	CORONASELTZERVARIETY12/...	PRO...	1	Top 90	
087692000334	ANGRYORCHARDCRISPAPPL...		1	Front	

Rite Aid
Store# 2010
NEW YORK, NY

FINAL

Warm

FMB always lead flow in relation to store traffic flow.
 Open a support ticket if planogram flow shown is reversed from actual store traffic flow

Segment 1 of 2 starting view

Shelf Schematic Report

RITE AID_2010	Store # 2010	# of segments: 2			
030613000746	BROOKLYNVARIETY12/12CAN			1	Top 90
719057001563	PRESIDENTE12/12BTL			1	Side
083820567939	REDSTRIPELAGER6/11.2BTL	New		1	Side
4005249004181	VELTINSPILSENER4/16.9CAN			1	Side
018200202018	BUDWEISERNITROGOLD12/12...	PRO...		1	Top 90
018200089817	BUD8/16CAN			1	Side
089924278962	YUENGLINGLAGER12/12BTL			1	Front
022100001701	PABST12/12CAN			1	Side 90

Name: 1_4	W:96.00 in	D:14.00 in			
UPC (12 Digit)	Name	Ast	HFaci...	Orientat...	
018200229893	BUDLIGHTLIMEMANG-O-RITA1...		1	Top 90	
736920111327	GOOSEISLANDIPA6/12BTL		1	Front	
817606010209	CAPTAINLAWRENCEIPA6/12BTL		1	Side	
887151000949	CONEYISLANDMERMAIDPILS...		1	Side	
859093002442	SIXPOINTTHECRISP6/12CAN		1	Side	
859093002428	SIXPOINTSWEETACTION6/12C...		1	Side	
859093002435	SIXPOINTBENGALIIPA6/12CAN		1	Side	
859093002466	SIXPOINTRESINIIPA6/12CAN		1	Side	
862737000063	MONTAUKSUMMER6/12CAN(W...		1	Side	
859612001031	21STAMENDMENTBREWFREE...		1	Side	
869071000278	MONTAUKWAVECHASER4/6/1...		1	Side	
041827000767	HARPOONIPA6/12BTL		1	Side	
041827001467	HARPOONSEASONAL6/12BTL		1	Side	
636251776120	STONEIPA6/12BTL		1	Side	
071990095321	BLUEMOONSEASONAL6/12BTL		1	Front	
071990095116	BLUEMOONBELGIANWHITE6/1...		1	Side	
087692100126	SAMUELADAMSBOSTONLAGE...		2	Side	

