

Rite Aid

Store# 159

NEW WINDSOR , NY

Cold

FMB always lead flow in relation to store traffic flow.
Open a support ticket if planogram flow shown is reversed from actual store traffic flow



← 2 ft 2 in × 2 ft 2 in × 2 ft 2 in × 2 ft 2 in × 2 ft 2 in →

Rite Aid
Store# 159
NEW WINDSOR , NY

FINAL

Cold

FMB always lead flow in relation to store traffic flow.
 Open a support ticket if planogram flow shown is reversed from actual store traffic flow

Segment 1 of 5 starting view

Shelf Schematic Report

RITE AID_159 Store # 159 # of segments: 5



| Name: 1_1 | | W:26.00 in | D:36.00 in | | |
|----------------|----------------------|------------|------------|-------------|----|
| UPC (12 Digit) | Name | Ast | HFaci... | Orientat... | |
| 018200200779 | NATURALLIGHT15/12CAN | | 1 | Side | 90 |
| 018200200786 | NATTYDADDY15/12CAN | | 1 | Side | |
| 034100573409 | LITE18/12CAN | | 1 | Side | |
| 071990300173 | COORSLIGHT18/12CAN | | 1 | Side | 90 |

| Name: 1_2 | | W:26.00 in | D:36.00 in | | |
|----------------|--------------------|------------|------------|-------------|----|
| UPC (12 Digit) | Name | Ast | HFaci... | Orientat... | |
| 018200201332 | NATURDAYS12/12CAN | | 1 | Top | 90 |
| 034100576363 | LITE12/12CAN | | 1 | Top | 90 |
| 071990316006 | COORSLIGHT24/12CAN | | 1 | Side | |
| 071990300784 | COORSLIGHT18/12BTL | | 1 | Side | |

| Name: 1_3 | | W:26.00 in | D:36.00 in | | |
|----------------|-----------------------|------------|------------|-------------|----|
| UPC (12 Digit) | Name | Ast | HFaci... | Orientat... | |
| 071439344508 | ROLLINGROCK12/12CAN | | 1 | Top | 90 |
| 022100001701 | PABST12/12CAN | | 1 | Top | 90 |
| 071990301040 | COORSLIGHT9/16BTL(AL) | | 1 | Front | |
| 071990300692 | COORSLIGHT12/12BTL | | 1 | Side | |

| Name: 1_4 | | W:26.00 in | D:36.00 in | | |
|----------------|-----------------------|------------|------------|-------------|----|
| UPC (12 Digit) | Name | Ast | HFaci... | Orientat... | |
| 071990480455 | KEYSTONELIGHT15/12CAN | | 1 | Side | |
| 018200284434 | NATURALICE15/12CAN | | 1 | Side | |
| 034100015091 | HIGHLIFE12/12BTL | | 1 | Side | |
| 071990000486 | COORSLIGHT12/12CAN | | 1 | Front | 90 |

| Name: 1_5 | | W:26.00 in | D:36.00 in | | |
|----------------|-------------------|------------|------------|-------------|----|
| UPC (12 Digit) | Name | Ast | HFaci... | Orientat... | |
| 018200000638 | BUSCH6/16CAN | | 1 | Front | |
| 018200258787 | NATTYDADDY6/16CAN | | 1 | Side | |
| 034100000073 | HIGHLIFE6/16CAN | | 1 | Side | |
| 034100016364 | HIGHLIFE12/12CAN | | 1 | Top | 90 |

| Name: 2_1 | | W:26.00 in | D:36.00 in | | |
|----------------|------------------|------------|------------|-------------|--|
| UPC (12 Digit) | Name | Ast | HFaci... | Orientat... | |
| 018200112188 | BUD18/12CAN | | 1 | Side | |
| 018200532184 | BUDLIGHT18/12CAN | | 1 | Side | |
| 018200533082 | BUDLIGHT18/12BTL | | 1 | Side | |

Rite Aid
Store# 159
NEW WINDSOR , NY

FINAL

Cold

FMB always lead flow in relation to store traffic flow.
 Open a support ticket if planogram flow shown is reversed from actual store traffic flow

Segment 1 of 5 starting view

Shelf Schematic Report



| | | |
|--------------|-----------------------|------------------|
| RITE AID_159 | Store # 159 | # of segments: 5 |
| 018200967214 | MICHELOBULTRA18/12CAN | 1 Side 90 |

| Name: 2_2 | | W:26.00 in | D:36.00 in | | |
|----------------|-----------------------|------------|------------|-------------|--|
| UPC (12 Digit) | Name | Ast | HFaci... | Orientat... | |
| 018200113086 | BUD18/12BTL | | 1 | Side | |
| 018200111686 | BUD24/12CAN | | 1 | Side | |
| 018200531682 | BUDLIGHT24/12CAN | | 1 | Side | |
| 018200069918 | MICHELOBULTRA12/12CAN | | 1 | Side | |

| Name: 2_3 | | W:26.00 in | D:36.00 in | | |
|----------------|-----------------------|------------|------------|-------------|--|
| UPC (12 Digit) | Name | Ast | HFaci... | Orientat... | |
| 018200110474 | BUD12/12CAN | | 1 | Top 90 | |
| 018200530470 | BUDLIGHT12/12CAN | | 1 | Top 90 | |
| 018200970092 | BUDLIGHT12/16BTL(AL) | | 1 | Side | |
| 018200966248 | MICHELOBULTRA18/12BTL | | 1 | Side | |

| Name: 2_4 | | W:26.00 in | D:36.00 in | | |
|----------------|-----------------------------|------------|------------|-------------|--|
| UPC (12 Digit) | Name | Ast | HFaci... | Orientat... | |
| 018200202100 | BUDLIGHTPEELSVARIETY12/1... | | 1 | Top 90 | |
| 018200202018 | BUDWEISERNITROGOLD12/12... | | 1 | Top 90 | |
| 613008752200 | ARNOLDPALMERSPIKEDHALF... | | 1 | Front 90 | |
| 080660957159 | MODELOESPECIAL12/12CAN | | 1 | Top 90 | |

| Name: 2_5 | | W:26.00 in | D:36.00 in | | |
|----------------|---------------------------|------------|------------|-------------|--|
| UPC (12 Digit) | Name | Ast | HFaci... | Orientat... | |
| 018200000164 | BUD6/12CAN | | 1 | Side | |
| 018200169847 | MICHELOBULTRALIMEACTU... | | 1 | Front 90 | |
| 018200201448 | MICHELOBULTRAPUREGOLD1... | | 1 | Top 90 | |
| 018200200823 | MICHELOBULTRAPUREGOLD6... | | 1 | Side | |

Rite Aid
Store# 159
NEW WINDSOR , NY

FINAL

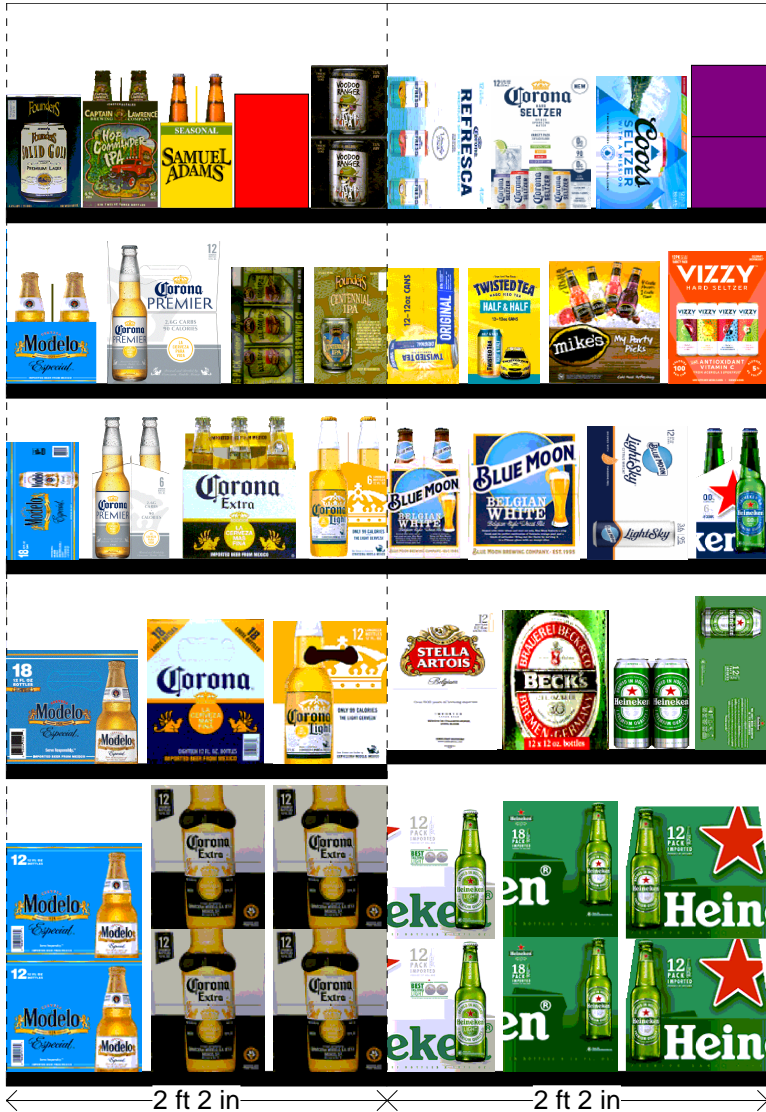
Cold

FMB always lead flow in relation to store traffic flow.
 Open a support ticket if planogram flow shown is reversed from actual store traffic flow

Segment 3 of 5 starting view

Shelf Schematic Report

RITE AID_159 Store # 159 # of segments: 5



| Name: 3_1 | W:26.00 in | D:36.00 in | | |
|----------------|------------------------|------------|----------|-------------|
| UPC (12 Digit) | Name | Ast | HFaci... | Orientat... |
| 080660957579 | MODELOESPECIAL12/12BTL | | 1 | Side |
| 080660956152 | CORONA12/12BTL | | 2 | Side |

| Name: 3_2 | W:26.00 in | D:36.00 in | | |
|----------------|------------------------|------------|----------|-------------|
| UPC (12 Digit) | Name | Ast | HFaci... | Orientat... |
| 033544950272 | MODELOESPECIAL18/12BTL | | 1 | Side |
| 080660956800 | CORONA18/12BTL | | 1 | Side |
| 080660956756 | CORONALIGHT12/12BTL | | 1 | Side |

| Name: 3_3 | W:26.00 in | D:36.00 in | | |
|----------------|------------------------|------------|----------|-------------|
| UPC (12 Digit) | Name | Ast | HFaci... | Orientat... |
| 080660957111 | MODELOESPECIAL18/12CAN | | 1 | Side |
| 033544950418 | CORONAPREMIER6/12BTL | | 1 | Side |
| 080660956053 | CORONA6/12BTL | | 1 | Front |
| 080660956251 | CORONALIGHT6/12BTL | | 1 | Side |

| Name: 3_4 | W:26.00 in | D:36.00 in | | |
|----------------|----------------------------|------------|----------|-------------|
| UPC (12 Digit) | Name | Ast | HFaci... | Orientat... |
| 080660957654 | MODELOESPECIAL6/12BTL | | 1 | Side |
| 033544950425 | CORONAPREMIER12/12BTL | | 1 | Side |
| 642860900245 | FOUNDERSALLDAYSESSIONI... | | 1 | Side |
| 642860900054 | FOUNDERSCENTENNIALIPA15... | | 1 | Side |

| Name: 3_5 | W:26.00 in | D:36.00 in | | |
|----------------|----------------------------|------------|----------|-------------|
| UPC (12 Digit) | Name | Ast | HFaci... | Orientat... |
| 642860800316 | FOUNDERSSOLIDGOLD12/12C... | | 1 | Side |
| 817606010209 | CAPTAINLAWRENCEIPA6/12BTL | | 1 | Side |
| 087692300502 | SAMUELADAMSSEASONAL6/1... | | 1 | Side |
| 087692007883 | SAMUELADAMSNEWENGLAN... | | 1 | Side |
| 754527008857 | NEWBELGIUMVOODOOJUICY... | | 1 | Side |

| Name: 4_1 | W:26.00 in | D:36.00 in | | |
|----------------|-----------------------|------------|----------|-------------|
| UPC (12 Digit) | Name | Ast | HFaci... | Orientat... |
| 072890001597 | HEINEKENLIGHT12/12BTL | | 1 | Side |
| 072890001528 | HEINEKEN18/12BTL | | 1 | Side |
| 072890000163 | HEINEKEN12/12BTL | | 1 | Front |

Name: 4_2 W:26.00 in D:36.00 in

Rite Aid
Store# 159
NEW WINDSOR , NY

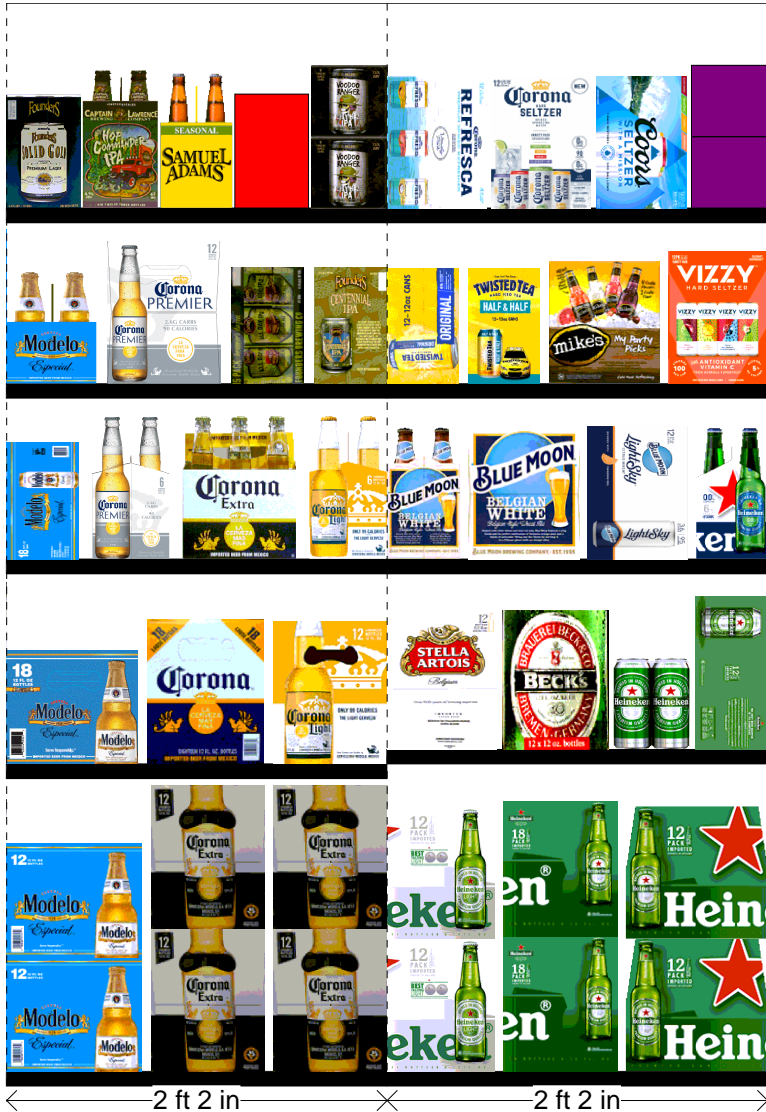
FINAL

Cold

FMB always lead flow in relation to store traffic flow.
 Open a support ticket if planogram flow shown is reversed from actual store traffic flow

Segment 3 of 5 starting view

Shelf Schematic Report



| UPC (12 Digit) | Name | Ast | HFaci... | Orientat... |
|----------------|------------------------|-----|----------|-------------|
| 786150000144 | STELLAARTOIS12/11.2BTL | | 1 | Side |
| 082488123006 | BECKS12/12BTL | | 1 | Side |
| 072890000835 | HEINEKEN4/16CAN | | 1 | Front |
| 072890000200 | HEINEKEN12/12CAN | | 1 | Top 90 |

| Name: 4_3 | | W:26.00 in | D:36.00 in | | |
|----------------|-----------------------------|------------|------------|-------------|--|
| UPC (12 Digit) | Name | Ast | HFaci... | Orientat... | |
| 071990095116 | BLUEMOONBELGIANWHITE6/1... | | 1 | Side | |
| 071990095161 | BLUEMOONBELGIANWHITE12/... | | 1 | Side | |
| 071990095925 | BLUEMOONLIGHTSKY12/12CAN | | 1 | Top 90 | |
| 072890006219 | HEINEKEN0.0NEARBEER6/12B... | | 1 | Side | |

| Name: 4_4 | | W:26.00 in | D:36.00 in | | |
|----------------|-----------------------------|------------|------------|-------------|--|
| UPC (12 Digit) | Name | Ast | HFaci... | Orientat... | |
| 087692831341 | TWISTEDTEAORIGINAL12/12C... | | 1 | Side | |
| 087692751342 | TWISTEDTEAHALFANDHALF12... | | 1 | Side | |
| 635985129981 | MIKESHARDVARIETY12/11.2BTL | | 1 | Side | |
| 034100012328 | VIZZYVARIETY12/12CAN(A) | | 1 | Top 90 | |

| Name: 4_5 | | W:26.00 in | D:36.00 in | | |
|----------------|----------------------------|------------|------------|-------------|--|
| UPC (12 Digit) | Name | Ast | HFaci... | Orientat... | |
| 033544000137 | CORONAVARIETYREFRESCA1... | | 1 | Top 90 | |
| 033544000434 | CORONASELTZERVARIETY12/... | | 1 | Top 90 | |
| 071990000158 | COORSHARDSELTZERVARIET... | | 1 | Front 90 | |
| 018200202506 | BUDLIGHTPLATINUMSELTZER... | | 1 | Side | |

Rite Aid
Store# 159
NEW WINDSOR , NY

FINAL

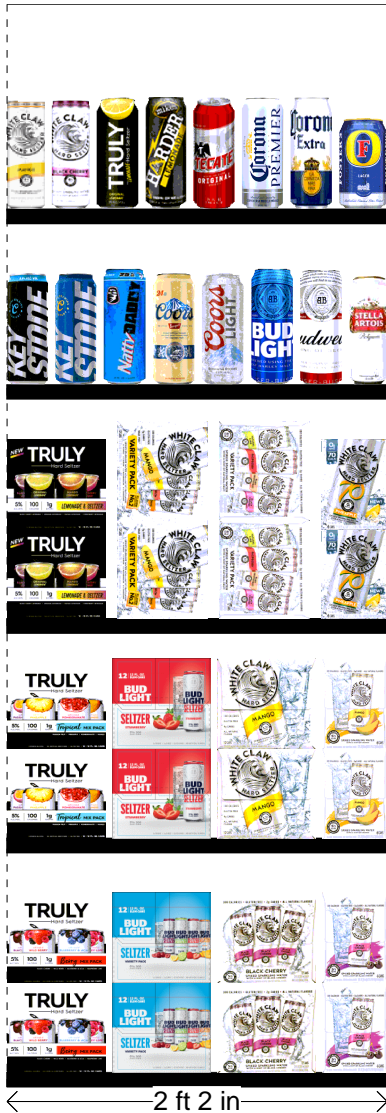
Cold

FMB always lead flow in relation to store traffic flow.
 Open a support ticket if planogram flow shown is reversed from actual store traffic flow

Segment 5 of 5 starting view

Shelf Schematic Report

RITE AID_159 Store # 159 # of segments: 5



| Name: 5_1 | | W:26.00 in | D:36.00 in | |
|----------------|----------------------------|------------|------------|-------------|
| UPC (12 Digit) | Name | Ast | HFaci... | Orientat... |
| 087692006862 | TRULYVARIETYBERRY12/12C... | | 1 | Side |
| 018200202087 | BUDLIGHTSELTZERVARIETY1... | | 1 | Side |
| 635985260899 | WHITECLAWBLACKCHERRY12... | | 1 | Side |
| 635985200253 | WHITECLAWBLACKCHERRY6/... | | 1 | Side |

| Name: 5_2 | | W:26.00 in | D:36.00 in | |
|----------------|-----------------------------|------------|------------|-------------|
| UPC (12 Digit) | Name | Ast | HFaci... | Orientat... |
| 087692008040 | TRULYVARIETYTROPICAL12/1... | | 1 | Side |
| 018200202179 | BUDLIGHTSELTZERVARIETYR... | | 1 | Side |
| 635985100331 | WHITECLAWMANGO12/12CAN | | 1 | Side |
| 635985260875 | WHITECLAWMANGO6/12CAN | | 1 | Side |

| Name: 5_3 | | W:26.00 in | D:36.00 in | |
|----------------|-----------------------------|------------|------------|-------------|
| UPC (12 Digit) | Name | Ast | HFaci... | Orientat... |
| 087692009917 | TRULYLEMONADEVARIETY12/... | | 1 | Side |
| 635985800064 | WHITECLAWVARIETY12/12CA... | | 1 | Side 90 |
| 635985548904 | WHITECLAWVARIETY12/12CA... | | 1 | Side 90 |
| 635985000211 | WHITECLAW70PINEAPPLE6/12... | | 1 | Side |

| Name: 5_4 | | W:26.00 in | D:36.00 in | |
|----------------|-----------------------|------------|------------|-------------|
| UPC (12 Digit) | Name | Ast | HFaci... | Orientat... |
| 071990477127 | KEYSTONEICE1/24CAN | | 1 | Front |
| 071990480240 | KEYSTONELIGHT1/24CAN | | 1 | Front |
| 018200250132 | NATTYDADDY1/25CAN | | 1 | Front |
| 071990100711 | COORSBANQUET1/24CAN | | 1 | Front |
| 071990300654 | COORSLIGHT1/24CAN | | 1 | Front |
| 018200250019 | BUDLIGHT1/25CAN | | 1 | Front |
| 018200250002 | BUD1/25CAN | | 1 | Front |
| 786150001707 | STELLAARTOIS1/19.2CAN | | 1 | Front |

| Name: 5_5 | | W:26.00 in | D:36.00 in | |
|----------------|---------------------------|------------|------------|-------------|
| UPC (12 Digit) | Name | Ast | HFaci... | Orientat... |
| 635985260394 | WHITECLAWMANGO1/19.2CAN | | 1 | Front |
| 635985260387 | WHITECLAWBLACKCHERRY1/... | | 1 | Side |
| 087692010142 | TRULYLEMONADE1/24CAN | | 1 | Front |
| 635985245834 | MIKESHARDERLEMONADE1/2... | | 1 | Front |
| 089826001422 | TECATE1/24CAN | | 1 | Front |
| 033544950470 | CORONAPREMIER1/24CAN | | 1 | Front |

Rite Aid
Store# 159
NEW WINDSOR , NY

FINAL

Cold

FMB always lead flow in relation to store traffic flow.
 Open a support ticket if planogram flow shown is reversed from actual store traffic flow

Segment 5 of 5 starting view

Shelf Schematic Report

| | | | | |
|--------------|------------------|------------------|---|-------|
| RITE AID_159 | Store # 159 | # of segments: 5 | | |
| 080660956435 | CORONA1/24CAN | | 1 | Front |
| 070897013315 | FOSTERS1/25.4CAN | | 1 | Front |



Rite Aid

Store# 159

NEW WINDSOR , NY

Warm

FMB always lead flow in relation to store traffic flow.
Open a support ticket if planogram flow shown is reversed from actual store traffic flow



Rite Aid
Store# 159
NEW WINDSOR , NY

FINAL

Warm

FMB always lead flow in relation to store traffic flow.
 Open a support ticket if planogram flow shown is reversed from actual store traffic flow

Segment 1 of 4 starting view

Shelf Schematic Report

RITE AID_159 Store # 159 # of segments: 4



| Name: 2_1 | | W:192.00 in | D:19.00 in | |
|----------------|-----------------------------|-------------|------------|-------------|
| UPC (12 Digit) | Name | Ast | HFaci... | Orientat... |
| 087692006862 | TRULYVARIETYBERRY12/12C... | | 1 | Side |
| 087692004240 | TRULYVARIETYCITRUS12/12C... | | 1 | Side |
| 635985100331 | WHITECLAWMANGO12/12CAN | | 1 | Side |
| 635985260899 | WHITECLAWBLACKCHERRY12... | | 1 | Side |
| 635985800064 | WHITECLAWVARIETY12/12CA... | | 1 | Side |
| 635985548904 | WHITECLAWVARIETY12/12CA... | | 1 | Side |
| 635985129981 | MIKESHARDVARIETY12/11.2BTL | | 1 | Side |
| 072890001528 | HEINEKEN18/12BTL | | 1 | Side |
| 072890000163 | HEINEKEN12/12BTL | | 2 | Side |
| 786150001493 | STELLAARTOIS18/11.2BTL | | 1 | Side |
| 080660956152 | CORONA12/12BTL | | 2 | Front |

| Name: 2_2 | | W:192.00 in | D:19.00 in | |
|----------------|-----------------------------|-------------|------------|-------------|
| UPC (12 Digit) | Name | Ast | HFaci... | Orientat... |
| 087692009917 | TRULYLEMONADEVARIETY12/... | | 1 | Top 90 |
| 087692008040 | TRULYVARIETYTROPICAL12/1... | | 1 | Top 90 |
| 635985000211 | WHITECLAW70PINEAPPLE6/12... | | 1 | Top |
| 018200202087 | BUDLIGHTSELTZERVARIETY1... | | 1 | Top 90 |
| 082000781424 | SMIRNOFFSPIKEDSPARKLING... | | 1 | Top 90 |
| 018200285486 | BONANDVIVSPIKEDSELTZERV... | | 1 | Top |
| 087692004974 | SAMUEL ADAMS 76 12/12 CAN | | 1 | Side 90 |
| 072890001597 | HEINEKENLIGHT12/12BTL | | 1 | Front |
| 072890000200 | HEINEKEN12/12CAN | | 1 | Side 90 |
| 786150000144 | STELLAARTOIS12/11.2BTL | | 1 | Front |
| 080660956954 | CORONA12/12CAN | | 1 | Top |
| 033544950531 | CORONAFAMILIAR12/12BTL | | 1 | Front |

| Name: 2_3 | | W:192.00 in | D:19.00 in | |
|----------------|-----------------------------|-------------|------------|-------------|
| UPC (12 Digit) | Name | Ast | HFaci... | Orientat... |
| 034100012328 | VIZZYVARIETY12/12CAN(A) | | 1 | Top 90 |
| 082000781424 | SMIRNOFFSPIKEDSPARKLING... | | 1 | Top 90 |
| 033544000434 | CORONASELTZERVARIETY12/... | | 1 | Top 90 |
| 033544000137 | CORONAVARIETYREFRESCA1... | | 1 | Top 90 |
| 087692831341 | TWISTEDTEAORIGINAL12/12C... | | 1 | Side 90 |
| 087692751342 | TWISTEDTEAHALFANDHALF12... | | 1 | Side 90 |
| 087692011033 | SAMUELADAMSSEASONAL12/... | | 1 | Front |
| 072890001887 | HEINEKENLIGHT12/12CAN | | 1 | Front |
| 072890006219 | HEINEKEN0.ONEARBEER6/12B... | | 2 | Side |

Rite Aid
Store# 159
NEW WINDSOR , NY

FINAL

Warm

FMB always lead flow in relation to store traffic flow.
 Open a support ticket if planogram flow shown is reversed from actual store traffic flow

Segment 1 of 4 starting view

Shelf Schematic Report

| RITE AID_159 | Store # 159 | # of segments: 4 | | |
|--------------|------------------------|------------------|---|--------|
| 78615000014 | STELLAARTOIS6/11.2BTL | | 2 | Side |
| 786150000168 | STELLAARTOIS12/11.2CAN | | 1 | Top 90 |

| Name: 2_4 | | W:192.00 in | D:19.00 in | |
|----------------|----------------------------|-------------|------------|-------------|
| UPC (12 Digit) | Name | Ast | HFaci... | Orientat... |
| 087692007814 | TRULYROSE6/12CAN | | 1 | Top |
| 635985260875 | WHITECLAWMANGO6/12CAN | | 1 | Side 90 |
| 635985200253 | WHITECLAWBLACKCHERRY6/... | | 1 | Side 90 |
| 018200201790 | NATURALLIGHTSELTZERVARI... | | 1 | Side 90 |
| 613008752200 | ARNOLDPALMERSPIKEDHALF... | | 1 | Front 90 |
| 087692821021 | ANGRYORCHARDCRISPAPPL... | | 2 | Side |
| 736920116513 | GOOSEISLANDIPA15/12CAN | | 1 | Side 90 |
| 071990095161 | BLUEMOONBELGIANWHITE12/... | | 1 | Side |
| 072890000835 | HEINEKEN4/16CAN | | 2 | Front |
| 072890000118 | HEINEKEN6/12BTL | | 2 | Side |
| 082488123006 | BECKS12/12BTL | | 1 | Front |
| 033544950418 | CORONAPREMIER6/12BTL | | 1 | Front |

| Name: 2_5 | | W:192.00 in | D:19.00 in | |
|----------------|----------------------------|-------------|------------|-------------|
| UPC (12 Digit) | Name | Ast | HFaci... | Orientat... |
| 087692006787 | TRULYWILDBERRY6/12CAN | | 1 | Side |
| 087692007920 | TRULYBLUEBERRYANDACAI6/... | | 1 | Side |
| 635985200284 | WHITECLAWRUBYGRAPEFRUI... | | 1 | Side |
| 635985025986 | WHITECLAWNATURALLIME6/1... | | 1 | Side |
| 635985260660 | WHITECLAWRASPBERRY6/12... | | 1 | Side |
| 033544950630 | CORONAREFRESCAPASSION... | | 1 | Side |
| 033544950678 | CORONAREFRESCAGUAVALI... | | 1 | Side |
| 034100012229 | MOVOVARIETY4/8.4CAN | | 2 | Front |
| 863267000004 | NEWBURGHCREAMALE4/16CAN | | 2 | Front |
| 071990095116 | BLUEMOONBELGIANWHITE6/1... | | 2 | Side |
| 087692300502 | SAMUELADAMSSEASONAL6/1... | | 2 | Side |
| 736920111327 | GOOSEISLANDIPA6/12BTL | | 2 | Side |
| 817606010209 | CAPTAINLAWRENCEIPA6/12BTL | | 2 | Side |



Rite Aid
Store# 159
NEW WINDSOR , NY

FINAL

Warm

FMB always lead flow in relation to store traffic flow.
 Open a support ticket if planogram flow shown is reversed from actual store traffic flow

Segment 3 of 4 starting view

Shelf Schematic Report

RITE AID_159 Store # 159 # of segments: 4



| Name: 2_1 | | W:192.00 in | D:19.00 in | |
|----------------|------------------------|-------------|------------|-------------|
| UPC (12 Digit) | Name | Ast | HFaci... | Orientat... |
| 080660956800 | CORONA18/12BTL | | 1 | Side |
| 080660957579 | MODELOESPECIAL12/12BTL | | 1 | Front |
| 018200967153 | MICHELOBULTRA24/12CAN | | 1 | Side |
| 018200966248 | MICHELOBULTRA18/12BTL | | 1 | Side |
| 018200967214 | MICHELOBULTRA18/12CAN | | 1 | Side 90 |
| 018200533082 | BUDLIGHT18/12BTL | | 1 | Side |
| 018200530302 | BUDLIGHT30/12CAN | | 1 | Side |
| 071990300302 | COORSLIGHT30/12CAN | | 1 | Front |
| 071990316006 | COORSLIGHT24/12CAN | | 1 | Side 90 |
| 018200200779 | NATURALLIGHT15/12CAN | | 1 | Top |

| Name: 2_2 | | W:192.00 in | D:19.00 in | |
|----------------|--------------------------|-------------|------------|-------------|
| UPC (12 Digit) | Name | Ast | HFaci... | Orientat... |
| 080660957159 | MODELOESPECIAL12/12CAN | | 1 | Side 90 |
| 080660957111 | MODELOESPECIAL18/12CAN | | 1 | Side 90 |
| 018200200113 | MICHELOBULTRA8/16BTL(AL) | | 1 | Front |
| 018200531682 | BUDLIGHT24/12CAN | | 1 | Side 90 |
| 018200111686 | BUD24/12CAN | | 1 | Side 90 |
| 071990300784 | COORSLIGHT18/12BTL | | 1 | Front |
| 071990300173 | COORSLIGHT18/12CAN | | 2 | Side 90 |
| 034100573409 | LITE18/12CAN | | 1 | Top |

| Name: 2_3 | | W:192.00 in | D:19.00 in | |
|----------------|-----------------------|-------------|------------|-------------|
| UPC (12 Digit) | Name | Ast | HFaci... | Orientat... |
| 033544950425 | CORONAPREMIER12/12BTL | | 2 | Side |
| 080660957654 | MODELOESPECIAL6/12BTL | | 1 | Front |
| 018200069918 | MICHELOBULTRA12/12CAN | | 1 | Top 90 |
| 018200532184 | BUDLIGHT18/12CAN | | 1 | Top |
| 018200112188 | BUD18/12CAN | | 1 | Top |
| 071990300692 | COORSLIGHT12/12BTL | | 1 | Front |
| 034100016364 | HIGHLIFE12/12CAN | | 1 | Side 90 |
| 034100576363 | LITE12/12CAN | | 1 | Side 90 |
| 018200284434 | NATURALICE15/12CAN | | 1 | Top |

| Name: 2_4 | | W:192.00 in | D:19.00 in | |
|----------------|---------------------|-------------|------------|-------------|
| UPC (12 Digit) | Name | Ast | HFaci... | Orientat... |
| 080660956251 | CORONALIGHT6/12BTL | | 1 | Front |
| 080660956756 | CORONALIGHT12/12BTL | | 1 | Front |

Rite Aid
Store# 159
NEW WINDSOR , NY

FINAL

Warm

FMB always lead flow in relation to store traffic flow.
 Open a support ticket if planogram flow shown is reversed from actual store traffic flow

Segment 3 of 4 starting view

Shelf Schematic Report

| RITE AID_159 | Store # 159 | # of segments: 4 | | |
|--------------|---------------------------|------------------|---|---------|
| 018200201448 | MICHELOBULTRAPUREGOLD1... | | 1 | Top 90 |
| 018200530470 | BUDLIGHT12/12CAN | | 1 | Top |
| 018200113086 | BUD18/12BTL | | 1 | Front |
| 071990301040 | COORSLIGHT9/16BTL(AL) | | 1 | Front |
| 071990000486 | COORSLIGHT12/12CAN | | 1 | Top |
| 034100015091 | HIGHLIFE12/12BTL | | 1 | Side |
| 071990480455 | KEYSTONELIGHT15/12CAN | | 1 | Side 90 |
| 018200200786 | NATTYDADDY15/12CAN | | 1 | Side 90 |

| Name: 2_5 | | W:192.00 in | D:19.00 in | |
|----------------|----------------------|-------------|------------|-------------|
| UPC (12 Digit) | Name | Ast | HFaci... | Orientat... |
| 072890004116 | HEINEKENLIGHT4/16CAN | | 2 | Side |
| 080660956053 | CORONA6/12BTL | | 1 | Front |
| 018200059896 | MICHELOBULTRA6/12BTL | | 2 | Front |
| 018200970092 | BUDLIGHT12/16BTL(AL) | | 1 | Front |
| 018200000164 | BUD6/12CAN | | 1 | Front |
| 018200110474 | BUD12/12CAN | | 1 | Side 90 |
| 034100000073 | HIGHLIFE6/16CAN | | 1 | Front |
| 071439344508 | ROLLINGROCK12/12CAN | | 1 | Side 90 |
| 022100001701 | PABST12/12CAN | | 1 | Side 90 |
| 018200000638 | BUSCH6/16CAN | | 1 | Front |
| 018200258787 | NATTYDADDY6/16CAN | | 1 | Side |

