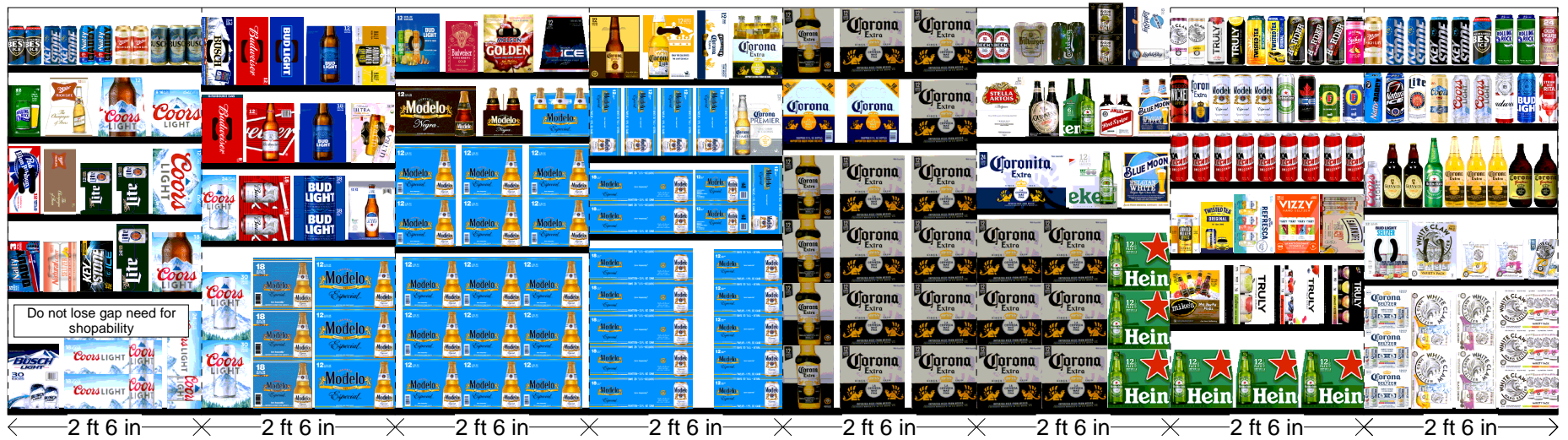


Rite Aid
 Store# 10713
 POUGHKEEPSIE , NY

Cold

FMB always lead flow in relation to store traffic flow.
 Open a support ticket if planogram flow shown is reversed from actual store traffic flow



Rite Aid
Store# 10713
POUGHKEEPSIE , NY

FINAL

Cold

FMB always lead flow in relation to store traffic flow.
 Open a support ticket if planogram flow shown is reversed from actual store traffic flow

Segment 1 of 8 starting view

Shelf Schematic Report

RITE AID_10713 Store # 10713 # of segments: 8



Name: 1_1		W:30.00 in	D:22.00 in		
UPC (12 Digit)	Name	Ast	HFaci...	Orientat...	
018200860317	BUSCHLIGHT30/12CAN		1	Side	
071990300173	COORSLIGHT18/12CAN		1	Top	
071990316006	COORSLIGHT24/12CAN		1	Top 90	

Name: 1_2		W:30.00 in	D:22.00 in		
UPC (12 Digit)	Name	Ast	HFaci...	Orientat...	
018200200786	NATTYDADDY15/12CAN		1	Side	
018200201790	NATURALLIGHTSELTZERVARI...		1	Side	
071990281519	KEYSTONEICE15/12CAN		1	Side	
034100573065	LITE24/12CAN		1	Side	
071990300784	COORSLIGHT18/12BTL		1	Side	

Name: 1_3		W:30.00 in	D:22.00 in		
UPC (12 Digit)	Name	Ast	HFaci...	Orientat...	
022100001701	PABST12/12CAN		1	Top 90	
034100016364	HIGHLIFE12/12CAN		1	Top 90	
034100576363	LITE12/12CAN		1	Side	
034100573409	LITE18/12CAN		1	Side	
071990000486	COORSLIGHT12/12CAN		1	Front 90	

Name: 1_4		W:30.00 in	D:22.00 in		
UPC (12 Digit)	Name	Ast	HFaci...	Orientat...	
071439344508	ROLLINGROCK12/12CAN		1	Side	
034100015091	HIGHLIFE12/12BTL		1	Side	
071990300692	COORSLIGHT12/12BTL		1	Side	
071990301040	COORSLIGHT9/16BTL(AL)		1	Front	

Name: 1_5		W:30.00 in	D:22.00 in		
UPC (12 Digit)	Name	Ast	HFaci...	Orientat...	
034100000165	MILWAUKEESBESTICE6/16CAN		1	Side	
071990480080	KEYSTONELIGHT6/16CAN		1	Side	
018200258787	NATTYDADDY6/16CAN		1	Side	
034100000073	HIGHLIFE6/16CAN		1	Side	
018200000638	BUSCH6/16CAN		1	Front	

Name: 2_1		W:30.00 in	D:22.00 in		
UPC (12 Digit)	Name	Ast	HFaci...	Orientat...	
071990300302	COORSLIGHT30/12CAN		1	Side	

Rite Aid
Store# 10713
POUGHKEEPSIE , NY

FINAL

Cold

FMB always lead flow in relation to store traffic flow.
 Open a support ticket if planogram flow shown is reversed from actual store traffic flow

Segment 1 of 8 starting view

Shelf Schematic Report

RITE AID_10713 Store # 10713		# of segments: 8	
033544950272	MODELOESPECIAL18/12BTL	1	Side
080660957579	MODELOESPECIAL12/12BTL	1	Front

Name: 2_2		W:30.00 in	D:22.00 in
UPC (12 Digit)	Name	Ast	HFaci... Orientat...
071990316006	COORSLIGHT24/12CAN		1 Side
018200112188	BUD18/12CAN		1 Side 90
018200532184	BUDLIGHT18/12CAN		1 Side 90
018200059902	MICHELOBULTRA12/12BTL		1 Side

Name: 2_3		W:30.00 in	D:22.00 in
UPC (12 Digit)	Name	Ast	HFaci... Orientat...
018200089817	BUD8/16CAN		1 Top 90
018200007712	BUD12/12BTL		1 Side
018200533082	BUDLIGHT18/12BTL		1 Side
018200201448	MICHELOBULTRAPUREGOLD1...		1 Top 90

Name: 2_4		W:30.00 in	D:22.00 in
UPC (12 Digit)	Name	Ast	HFaci... Orientat...
018200610479	BUSCH12/12CAN		1 Top 90
018200110474	BUD12/12CAN		1 Top 90
018200530470	BUDLIGHT12/12CAN		1 Top 90
018200007699	BUDLIGHT12/12BTL		1 Side
613008752200	ARNOLDPALMERSPIKEDHALF...		1 Front 90



Rite Aid
Store# 10713
POUGHKEEPSIE , NY

FINAL

Cold

FMB always lead flow in relation to store traffic flow.
 Open a support ticket if planogram flow shown is reversed from actual store traffic flow

Segment 3 of 8 starting view

Shelf Schematic Report

RITE AID_10713 Store # 10713 # of segments: 8



Name: 3_1	W:30.00 in	D:22.00 in		
UPC (12 Digit)	Name	Ast	HFaci...	Orientat...
080660957579	MODELOESPECIAL12/12BTL		3	Side

Name: 3_2	W:30.00 in	D:22.00 in		
UPC (12 Digit)	Name	Ast	HFaci...	Orientat...
080660957579	MODELOESPECIAL12/12BTL		3	Side

Name: 3_3	W:30.00 in	D:22.00 in		
UPC (12 Digit)	Name	Ast	HFaci...	Orientat...
080660957876	MODELONEGRA12/12BTL		1	Front
080660957852	MODELONEGRA6/12BTL		1	Side
080660957654	MODELOESPECIAL6/12BTL		1	Front

Name: 3_4	W:30.00 in	D:22.00 in		
UPC (12 Digit)	Name	Ast	HFaci...	Orientat...
018200202100	BUDLIGHTPEELSVARIETY12/1...		1	Top 90
018200202018	BUDWEISERNITROGOLD12/12...		1	Side
068213021175	MOLSONGOLDEN12/12BTL		1	Side
068213091178	MOLSONICE12/12BTL		1	Side

Name: 4_2	W:30.00 in	D:22.00 in		
UPC (12 Digit)	Name	Ast	HFaci...	Orientat...
080660957111	MODELOESPECIAL18/12CAN		1	Top
080660957159	MODELOESPECIAL12/12CAN		1	Top

Name: 4_3	W:30.00 in	D:22.00 in		
UPC (12 Digit)	Name	Ast	HFaci...	Orientat...
080660957111	MODELOESPECIAL18/12CAN		1	Top
080660957159	MODELOESPECIAL12/12CAN		1	Side 90
080660957159	MODELOESPECIAL12/12CAN		1	Top 90

Name: 4_4	W:30.00 in	D:22.00 in		
UPC (12 Digit)	Name	Ast	HFaci...	Orientat...
080660957159	MODELOESPECIAL12/12CAN		4	Top 90
033544950425	CORONAPREMIER12/12BTL		1	Side

Name: 4_1	W:30.00 in	D:22.00 in		
UPC (12 Digit)	Name	Ast	HFaci...	Orientat...
033544950531	CORONAFAMILIAR12/12BTL		1	Side

Rite Aid
Store# 10713
POUGHKEEPSIE , NY

FINAL

Cold

FMB always lead flow in relation to store traffic flow.
 Open a support ticket if planogram flow shown is reversed from actual store traffic flow

Segment 3 of 8 starting view

Shelf Schematic Report

RITE AID_10713 Store # 10713		# of segments: 8	
080660956756	CORONALIGHT12/12BTL	1	Side
080660956954	CORONA12/12CAN	1	Top 90
080660956053	CORONA6/12BTL	1	Front



Rite Aid
Store# 10713
POUGHKEEPSIE , NY

FINAL

Cold

FMB always lead flow in relation to store traffic flow.
 Open a support ticket if planogram flow shown is reversed from actual store traffic flow

Segment 5 of 8 starting view

Shelf Schematic Report

RITE AID_10713 Store # 10713 # of segments: 8



Name: 5_2	W:30.00 in	D:22.00 in		
UPC (12 Digit)	Name	Ast	HFaci...	Orientat...
080660956152	CORONA12/12BTL		1	Side
080660956152	CORONA12/12BTL		2	Front

Name: 5_3	W:30.00 in	D:22.00 in		
UPC (12 Digit)	Name	Ast	HFaci...	Orientat...
080660956800	CORONA18/12BTL		2	Side
080660956152	CORONA12/12BTL		1	Front

Name: 5_1	W:30.00 in	D:22.00 in		
UPC (12 Digit)	Name	Ast	HFaci...	Orientat...
080660956152	CORONA12/12BTL		1	Side
080660956152	CORONA12/12BTL		2	Front

Name: 6_1	W:30.00 in	D:22.00 in		
UPC (12 Digit)	Name	Ast	HFaci...	Orientat...
080660956152	CORONA12/12BTL		2	Front
07289000163	HEINEKEN12/12BTL		1	Front

Name: 6_2	W:30.00 in	D:22.00 in		
UPC (12 Digit)	Name	Ast	HFaci...	Orientat...
080660954080	CORONA24/7BTL		1	Front
072890001597	HEINEKENLIGHT12/12BTL		1	Side
071990095161	BLUEMOONBELGIANWHITE12/...		1	Side

Name: 6_3	W:30.00 in	D:22.00 in		
UPC (12 Digit)	Name	Ast	HFaci...	Orientat...
786150000144	STELLAARTOIS12/11.2BTL		1	Side
083820123937	GUINNESSEXTRASTOUT6/12B...		1	Side
072890000118	HEINEKEN6/12BTL		1	Side
083820567939	REDSTRIPELAGER6/11.2BTL		1	Side
071990095116	BLUEMOONBELGIANWHITE6/1...		1	Side

Name: 6_4	W:30.00 in	D:22.00 in		
UPC (12 Digit)	Name	Ast	HFaci...	Orientat...
082488123778	BECKS4/16CAN		1	Front
020507000112	BITBURGER4/16.9CAN(WRAP)		1	Front
087600101153	CARLSBERG4/16.9CAN		1	Front
754527008857	NEWBELGIUMVOODOOJUICY...		1	Side

Rite Aid
Store# 10713
POUGHKEEPSIE , NY

FINAL

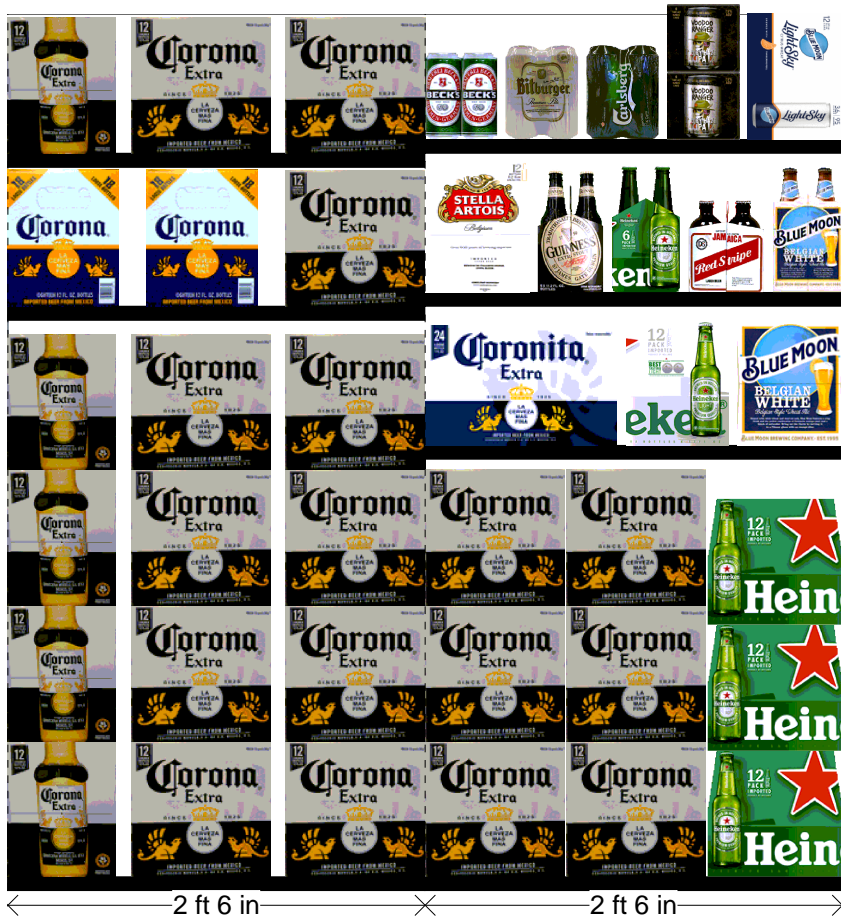
Cold

FMB always lead flow in relation to store traffic flow.
 Open a support ticket if planogram flow shown is reversed from actual store traffic flow

Segment 5 of 8 starting view

Shelf Schematic Report

RITE AID_10713 Store # 10713 # of segments: 8
 071990095925 BLUEMOONLIGHTSKY12/12CAN 1 Top 90



Rite Aid
Store# 10713
POUGHKEEPSIE , NY

FINAL

Cold

FMB always lead flow in relation to store traffic flow.
 Open a support ticket if planogram flow shown is reversed from actual store traffic flow

Segment 7 of 8 starting view

Shelf Schematic Report

RITE AID_10713 Store # 10713 # of segments: 8

Name: 7_6	W:30.00 in	D:22.00 in		
UPC (12 Digit)	Name	Ast	HFaci...	Orientat...
07289000163	HEINEKEN12/12BTL		3	Front

Name: 8_2	W:30.00 in	D:22.00 in		
UPC (12 Digit)	Name	Ast	HFaci...	Orientat...
635985129981	MIKESHARDVARIETY12/11.2BTL		1	Side
087692004240	TRULYVARIETYCITRUS12/12C...		1	Top 90
087692006862	TRULYVARIETYBERRY12/12C...		1	Top 90
087692009917	TRULYLEMONADEVARIETY12/...		1	Front 90

Name: 7_2	W:30.00 in	D:22.00 in		
UPC (12 Digit)	Name	Ast	HFaci...	Orientat...
613008748333	ARNOLDPALMERSPIKEDHALF...		1	Side
087692831389	TWISTEDTEAORIGINAL18/12C...		1	Side
033544000137	CORONAVARIETYREFRESCA1...		1	Front 90
034100012328	VIZZYVARIETY12/12CAN(A)		1	Top 90
082000781424	SMIRNOFFSPIKEDSPARKLING...		1	Top 90

Name: 7_3	W:30.00 in	D:22.00 in		
UPC (12 Digit)	Name	Ast	HFaci...	Orientat...
089826001422	TECATE1/24CAN		9	Front

Name: 7_4	W:30.00 in	D:22.00 in		
UPC (12 Digit)	Name	Ast	HFaci...	Orientat...
034100003234	REDDSWICKED1/24CAN		1	Front
080660956435	CORONA1/24CAN		1	Front
080660957210	MODELOESPECIAL1/24CAN		3	Front
072890001191	HEINEKEN1/24CAN		1	Front
068213094513	MOLSONICE1/24CAN		1	Front
070897183315	FOSTERSPREMIUM1/25.4CAN		1	Front
070897013315	FOSTERS1/25.4CAN		1	Front

Name: 7_1	W:30.00 in	D:22.00 in		
UPC (12 Digit)	Name	Ast	HFaci...	Orientat...
635985260387	WHITECLAWBLACKCHERRY1/...		1	Side
635985260394	WHITECLAWMANGO1/19.2CAN		1	Front
087692009511	TRULYWILDBERRY1/24CAN		1	Front
087692010425	TRULYLEMONADE1/24CAN		1	Front
087692752318	TWISTEDTEAHALFANDHALF1/...		1	Front



Rite Aid
Store# 10713
POUGHKEEPSIE , NY

FINAL

Cold

FMB always lead flow in relation to store traffic flow.
 Open a support ticket if planogram flow shown is reversed from actual store traffic flow

Segment 7 of 8 starting view

Shelf Schematic Report

RITE AID_10713 Store # 10713		# of segments: 8
087692832317	TWISTEDTEAORIGINAL1/24CAN	1 Front
635985245834	MIKESHARDERLEMONADE1/2...	1 Front
635985132158	MIKESHARDERBLACKCHERR...	1 Front
635985249856	MIKESHARDERCRANBERRYL...	1 Side
070310014837	SEAGRAMSESCAPESSPIKEDJ...	1 Front

Name: 7_5		W:30.00 in	D:22.00 in
UPC (12 Digit)	Name	Ast	HFaci... Orientat...
033544000434	CORONASELTZERVARIETY12/...		1 Side
635985100331	WHITECLAWMANGO12/12CAN		1 Front 90
635985260899	WHITECLAWBLACKCHERRY12...		1 Front 90
635985548904	WHITECLAWVARIETY12/12CA...		1 Front

Name: 8_3		W:30.00 in	D:22.00 in
UPC (12 Digit)	Name	Ast	HFaci... Orientat...
018200202087	BUDLIGHTSELTZERVARIETY1...		1 Top 90
635985800064	WHITECLAWVARIETY12/12CA...		1 Top 90
635985260875	WHITECLAWMANGO6/12CAN		1 Side
635985200253	WHITECLAWBLACKCHERRY6/...		1 Side
635985000211	WHITECLAW70PINEAPPLE6/12...		1 Side

Name: 8_4		W:30.00 in	D:22.00 in
UPC (12 Digit)	Name	Ast	HFaci... Orientat...
071990301033	COORSLIGHT1/16BTL(AL)		1 Front
083820234800	GUINNESSEXTRASTOUT1/22B...		2 Front
072890004789	HEINEKEN1/22BTL		1 Front
080660956411	CORONA1/24BTL		3 Front
080660956831	CORONAFAMILIAR1/32BTL		2 Front

Name: 8_5		W:30.00 in	D:22.00 in
UPC (12 Digit)	Name	Ast	HFaci... Orientat...
018200250132	NATTYDADDY1/25CAN		1 Front
018200250088	NATURALICE1/25CAN		1 Front
034100003555	LITE1/24CAN		1 Front
071990100711	COORSBANQUET1/24CAN		1 Front
071990300654	COORSLIGHT1/24CAN		2 Front
018200250002	BUD1/25CAN		1 Front
018200250019	BUDLIGHT1/25CAN		1 Front
018200255052	BUDLIGHTLIMESTRAWBERRIT...		1 Front

Name: 8_1		W:30.00 in	D:22.00 in
-----------	--	------------	------------



Rite Aid
Store# 10713
POUGHKEEPSIE , NY

FINAL

Cold

FMB always lead flow in relation to store traffic flow.
 Open a support ticket if planogram flow shown is reversed from actual store traffic flow

Segment 7 of 8 starting view

Shelf Schematic Report

RITE AID_10713 Store # 10713		# of segments: 8	
UPC (12 Digit)	Name	Ast	H/Faci... Orientat...
03410000059	HIGHLIFE1/24CAN		1 Front
071990480240	KEYSTONELIGHT1/24CAN		2 Front
071990477127	KEYSTONEICE1/24CAN		2 Front
034100008208	MILWAUKEESBESTICE1/24CAN		1 Front
071439006017	ROLLINGROCK1/25CAN		2 Front
034100006129	OLDE ENGLISH 800 1/24 CAN		1 Front



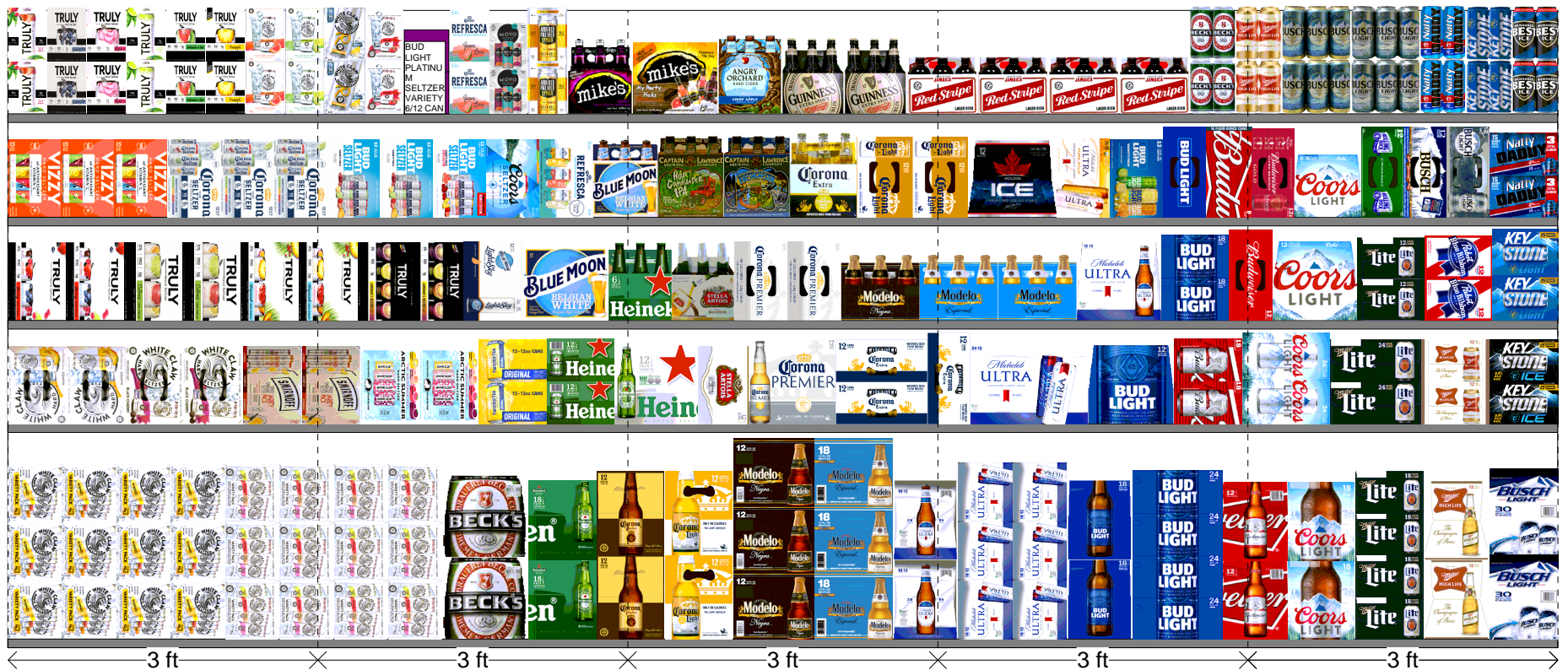
Rite Aid

Store# 10713

POUGHKEEPSIE , NY

WARM

FMB always lead flow in relation to store traffic flow.
Open a support ticket if planogram flow shown is reversed from actual store traffic flow



Rite Aid
Store# 10713
POUGHKEEPSIE , NY

FINAL

WARM

FMB always lead flow in relation to store traffic flow.
 Open a support ticket if planogram flow shown is reversed from actual store traffic flow

Segment 1 of 5 starting view

Shelf Schematic Report

RITE AID_10713 Store # 10713 # of segments: 5



Name: 3_1		W:180.00 in	D:16.00 in		
UPC (12 Digit)	Name	Ast	HFaci...	Orientat...	
635985800064	WHITECLAWVARIETY12/12CA...		4	Side	90
635985548904	WHITECLAWVARIETY12/12CA...		4	Side	90
082488123006	BECKS12/12BTL		1	Front	
072890001528	HEINEKEN18/12BTL		1	Side	

Name: 3_2		W:180.00 in	D:16.00 in		
UPC (12 Digit)	Name	Ast	HFaci...	Orientat...	
635985100331	WHITECLAWMANGO12/12CAN		2	Top	90
635985260899	WHITECLAWBLACKCHERRY12...		2	Top	90
082000781424	SMIRNOFFSPIKEDSPARKLING...		2	Top	90
041827701121	ARCTICCHILLHARDSELTZERV...		2	Top	90
087692831341	TWISTEDTEAORIGINAL12/12C...		1	Side	90
072890000200	HEINEKEN12/12CAN		1	Side	90

Name: 3_3		W:180.00 in	D:16.00 in		
UPC (12 Digit)	Name	Ast	HFaci...	Orientat...	
087692006862	TRULYVARIETYBERRY12/12C...		2	Top	90
087692004240	TRULYVARIETYCITRUS12/12C...		2	Top	90
087692008040	TRULYVARIETYTROPICAL12/1...		2	Top	90
087692009917	TRULYLEMONADEVARIETY12/...		2	Front	90
071990095925	BLUEMOONLIGHTSKY12/12CAN		1	Top	90
071990095161	BLUEMOONBELGIANWHITE12/...		1	Front	

Name: 3_4		W:180.00 in	D:16.00 in		
UPC (12 Digit)	Name	Ast	HFaci...	Orientat...	
034100012328	VIZZYVARIETY12/12CAN(A)		3	Front	90
033544000434	CORONASELTZERVARIETY12/...		3	Front	90
018200202087	BUDLIGHTSELTZERVARIETY1...		2	Front	90
018200202179	BUDLIGHTSELTZERVARIETYR...		1	Front	90
071990000158	COORSHARDSELTZERVARIET...		1	Front	90
033544000137	CORONAVARIETYREFRESCA1...		1	Front	90
071990095116	BLUEMOONBELGIANWHITE6/1...		1	Front	

Name: 3_5		W:180.00 in	D:16.00 in		
UPC (12 Digit)	Name	Ast	HFaci...	Orientat...	
087692006787	TRULYWILDBERRY6/12CAN		1	Side	
087692007920	TRULYBLUEBERRYANDACAI6/...		1	Side	
087692007814	TRULYROSE6/12CAN		1	Side	

Rite Aid
Store# 10713
POUGHKEEPSIE , NY

FINAL

WARM

FMB always lead flow in relation to store traffic flow.
 Open a support ticket if planogram flow shown is reversed from actual store traffic flow

Segment 1 of 5 starting view

Shelf Schematic Report

RITE AID_10713 Store # 10713		# of segments: 5		
087692004172	TRULYCOLIMALIME6/12CAN		1	Side
087692009894	TRULYWATERMELONKIWI6/12...		1	Side
087692009658	TRULYPINEAPPLE6/12CAN		1	Side
635985200284	WHITECLAWRUBYGRAPEFRUI...		1	Side
635985025986	WHITECLAWNATURALLIME6/1...		1	Side
635985000211	WHITECLAW70PINEAPPLE6/12...		1	Side
635985260660	WHITECLAWRASPBERRY6/12...		1	Side
018200202506	BUDLIGHTPLATINUMSELTZER...		1	Side
033544950678	CORONAREFRESCAGUAVALI...		1	Side
034100012229	MOVOVARIETY4/8.4CAN		1	Front
613008748333	ARNOLDPALMERSPIKEDHALF...		1	Side
635985067443	MIKESHARDBLACKCHERRYLE...		1	Front



Rite Aid
Store# 10713
POUGHKEEPSIE , NY

FINAL

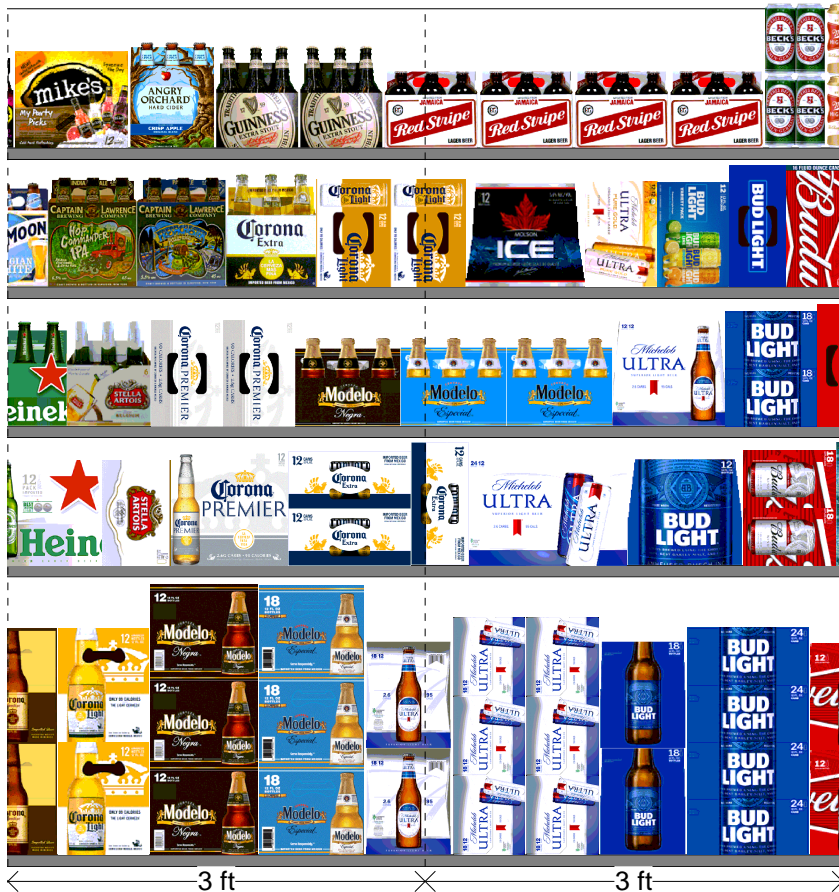
WARM

FMB always lead flow in relation to store traffic flow.
 Open a support ticket if planogram flow shown is reversed from actual store traffic flow

Segment 3 of 5 starting view

Shelf Schematic Report

RITE AID_10713 Store # 10713 # of segments: 5



Name: 3_1		W:180.00 in	D:16.00 in	
UPC (12 Digit)	Name	Ast	HFaci...	Orientat...
033544950531	CORONAFAMILIAR12/12BTL		1	Side
080660956756	CORONALIGHT12/12BTL		1	Side
080660957876	MODELONEGRA12/12BTL		1	Side
033544950272	MODELOESPECIAL18/12BTL		1	Side
018200966248	MICHELOBULTRA18/12BTL		1	Side
018200967214	MICHELOBULTRA18/12CAN		2	Side
018200533082	BUDLIGHT18/12BTL		1	Side
018200531682	BUDLIGHT24/12CAN		1	Side 90

Name: 3_2		W:180.00 in	D:16.00 in	
UPC (12 Digit)	Name	Ast	HFaci...	Orientat...
072890001597	HEINEKENLIGHT12/12BTL		1	Front
786150000168	STELLAARTOIS12/11.2CAN		1	Front 90
033544950425	CORONAPREMIER12/12BTL		1	Front
080660956954	CORONA12/12CAN		1	Top
080660956954	CORONA12/12CAN		1	Top 90
018200967153	MICHELOBULTRA24/12CAN		1	Front
018200007699	BUDLIGHT12/12BTL		1	Front
018200112188	BUD18/12CAN		1	Side 90

Name: 3_3		W:180.00 in	D:16.00 in	
UPC (12 Digit)	Name	Ast	HFaci...	Orientat...
072890000118	HEINEKEN6/12BTL		1	Front
786150000014	STELLAARTOIS6/11.2BTL		1	Front
033544950449	CORONAPREMIER12/12CAN		2	Top 90
080660957852	MODELONEGRA6/12BTL		1	Front
080660957654	MODELOESPECIAL6/12BTL		2	Front
018200059902	MICHELOBULTRA12/12BTL		1	Front
018200532184	BUDLIGHT18/12CAN		1	Side 90

Name: 3_4		W:180.00 in	D:16.00 in	
UPC (12 Digit)	Name	Ast	HFaci...	Orientat...
817606010209	CAPTAINLAWRENCEIPA6/12BTL		1	Front
817606010001	CAPTAINLAWRENCEFRESHC...		1	Front
080660956053	CORONA6/12BTL		1	Front
080660956213	CORONALIGHT12/12CAN		2	Top 90
068213091178	MOLSONICE12/12BTL		1	Front
018200201448	MICHELOBULTRAPUREGOLD1...		1	Front 90

Rite Aid
Store# 10713
POUGHKEEPSIE , NY

FINAL

WARM

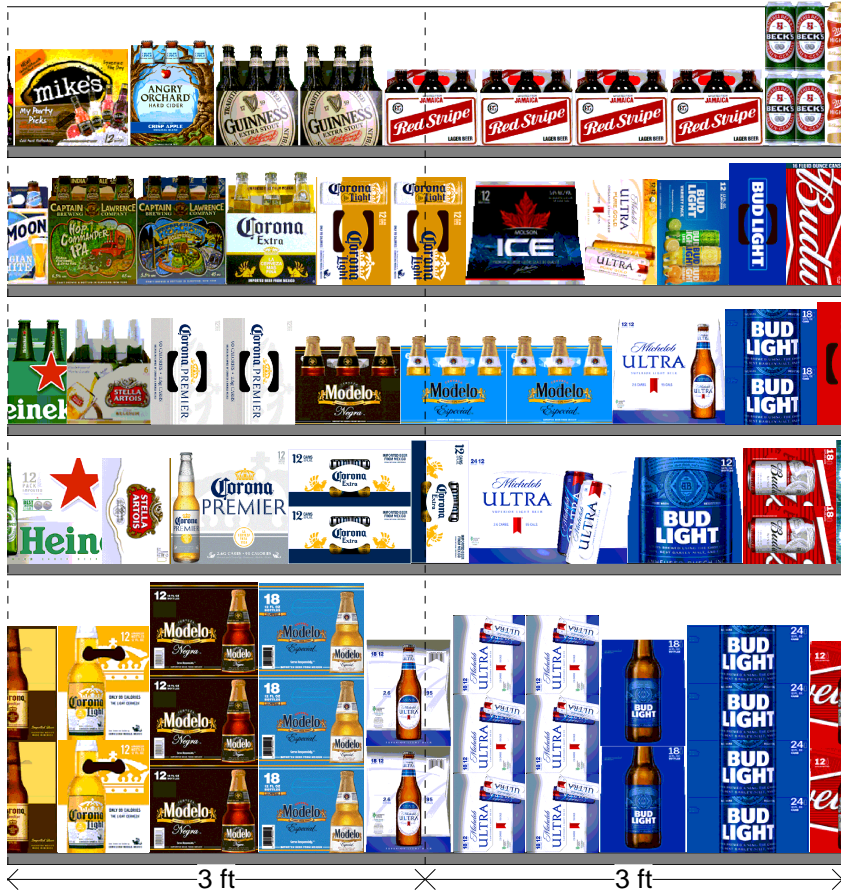
FMB always lead flow in relation to store traffic flow.
 Open a support ticket if planogram flow shown is reversed from actual store traffic flow

Segment 3 of 5 starting view

Shelf Schematic Report

RITE AID_10713 Store # 10713		# of segments: 5
018200202100	BUDLIGHTPEELSVARIETY12/1...	1 Front 90
018200530470	BUDLIGHT12/12CAN	1 Top 90
018200089817	BUD8/16CAN	1 Front 90

UPC (12 Digit)	Name	Ast	HFaci...	Orientat...
635985129981	MIKESHARDVARIETY12/11.2BTL		1	Front
087692821021	ANGRYORCHARDCRISPAPPL...		1	Front
083820123937	GUINNESSEXTRASTOUT6/12B...		2	Front
083820567939	REDSTRIPELAGER6/11.2BTL		4	Front
082488123778	BECKS4/16CAN		1	Front



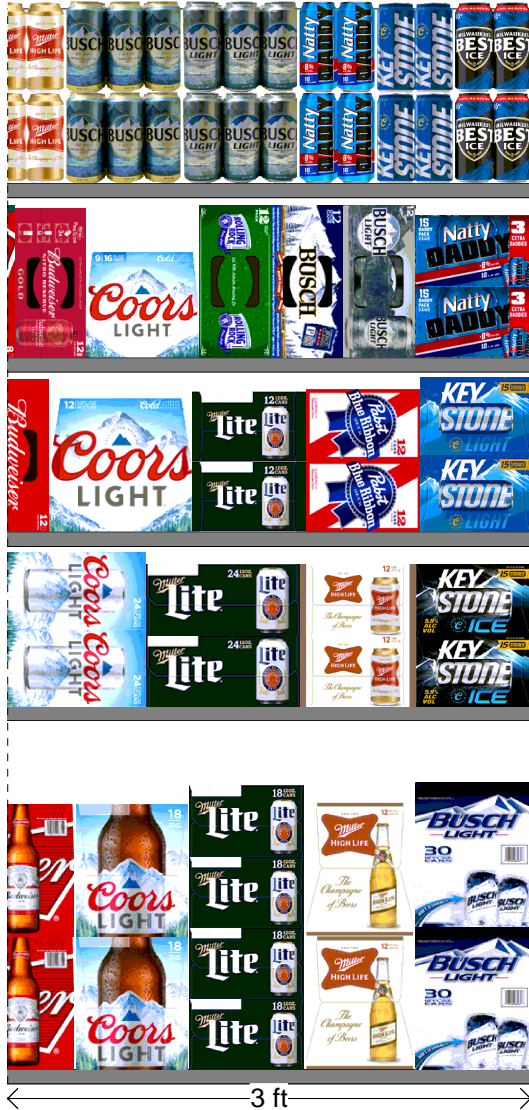
Rite Aid
Store# 10713
POUGHKEEPSIE , NY

FINAL

WARM

FMB always lead flow in relation to store traffic flow.
 Open a support ticket if planogram flow shown is reversed from actual store traffic flow

Segment 5 of 5 starting view



Shelf Schematic Report

RITE AID_10713 Store # 10713 # of segments: 5

Name: 3_1		W:180.00 in	D:16.00 in		
UPC (12 Digit)	Name	Ast	HFaci...	Orientat...	
018200007712	BUD12/12BTL		1	Side	
071990300784	COORSLIGHT18/12BTL		1	Side	
034100573409	LITE18/12CAN		1	Side 90	
034100015091	HIGHLIFE12/12BTL		1	Side	
018200860317	BUSCHLIGHT30/12CAN		1	Side	

Name: 3_2		W:180.00 in	D:16.00 in		
UPC (12 Digit)	Name	Ast	HFaci...	Orientat...	
071990316006	COORSLIGHT24/12CAN		1	Side 90	
034100573065	LITE24/12CAN		1	Side 90	
034100016364	HIGHLIFE12/12CAN		1	Side 90	
071990281519	KEYSTONEICE15/12CAN		1	Side 90	

Name: 3_3		W:180.00 in	D:16.00 in		
UPC (12 Digit)	Name	Ast	HFaci...	Orientat...	
018200110474	BUD12/12CAN		1	Top 90	
071990300692	COORSLIGHT12/12BTL		1	Front	
034100576363	LITE12/12CAN		1	Side 90	
022100001701	PABST12/12CAN		1	Side 90	
071990480455	KEYSTONELIGHT15/12CAN		1	Side 90	

Name: 3_4		W:180.00 in	D:16.00 in		
UPC (12 Digit)	Name	Ast	HFaci...	Orientat...	
018200202018	BUDWEISERNITROGOLD12/12...		1	Top 90	
071990301040	COORSLIGHT9/16BTL(AL)		1	Front	
071439344508	ROLLINGROCK12/12CAN		1	Top 90	
018200610479	BUSCH12/12CAN		1	Top 90	
018200008016	BUSCHLIGHT12/12CAN		1	Top 90	
018200200786	NATTYDADDY15/12CAN		1	Side 90	

Name: 3_5		W:180.00 in	D:16.00 in		
UPC (12 Digit)	Name	Ast	HFaci...	Orientat...	
034100000073	HIGHLIFE6/16CAN		1	Side	
018200000638	BUSCH6/16CAN		1	Front	
018200004261	BUSCHLIGHT6/16CAN		1	Front	
018200258787	NATTYDADDY6/16CAN		1	Side	
071990480080	KEYSTONELIGHT6/16CAN		1	Side	
034100000165	MILWAUKEESBESTICE6/16CAN		1	Side	