

Rite Aid Store# 1617 POUGHKEEPSIE , NY

Cold

FMB always lead flow in relation to store traffic flow.
Open a support ticket if planogram flow shown is reversed from actual store traffic flow



Rite Aid
Store# 1617
POUGHKEEPSIE , NY

FINAL

Cold

FMB always lead flow in relation to store traffic flow.
 Open a support ticket if planogram flow shown is reversed from actual store traffic flow

Segment 1 of 6 starting view

Shelf Schematic Report

RITE AID_1617 Store # 1617 # of segments: 6



| Name: 1_1 | | W:26.00 in | D:24.00 in | | |
|----------------|------------------|------------|------------|-------------|--|
| UPC (12 Digit) | Name | Ast | HFaci... | Orientat... | |
| 018200610301 | BUSCH30/12CAN | | 1 | Top 90 | |
| 034100015091 | HIGHLIFE12/12BTL | | 1 | Side | |
| 034100573065 | LITE24/12CAN | | 1 | Top 90 | |
| 034100573409 | LITE18/12CAN | | 1 | Top 90 | |

| Name: 1_2 | | W:26.00 in | D:24.00 in | | |
|----------------|---------------------|------------|------------|-------------|--|
| UPC (12 Digit) | Name | Ast | HFaci... | Orientat... | |
| 018200860317 | BUSCHLIGHT30/12CAN | | 1 | Side | |
| 018200610479 | BUSCH12/12CAN | | 1 | Top 90 | |
| 071439344508 | ROLLINGROCK12/12CAN | | 1 | Top 90 | |
| 071990000486 | COORSLIGHT12/12CAN | | 1 | Top 90 | |

| Name: 1_3 | | W:26.00 in | D:24.00 in | | |
|----------------|--------------------|------------|------------|-------------|--|
| UPC (12 Digit) | Name | Ast | HFaci... | Orientat... | |
| 018200200786 | NATTYDADDY15/12CAN | | 1 | Side | |
| 022100001701 | PABST12/12CAN | | 1 | Side | |
| 034100575090 | LITE12/12BTL | | 1 | Side | |
| 071990300692 | COORSLIGHT12/12BTL | | 1 | Side | |

| Name: 1_4 | | W:26.00 in | D:24.00 in | | |
|----------------|-----------------------|------------|------------|-------------|--|
| UPC (12 Digit) | Name | Ast | HFaci... | Orientat... | |
| 018200258787 | NATTYDADDY6/16CAN | | 1 | Side | |
| 022100000742 | PABST6/16CAN | | 1 | Side | |
| 034100576363 | LITE12/12CAN | | 1 | Side | |
| 071990301040 | COORSLIGHT9/16BTL(AL) | | 1 | Front | |

| Name: 1_5 | | W:26.00 in | D:24.00 in | | |
|----------------|--------------------|------------|------------|-------------|--|
| UPC (12 Digit) | Name | Ast | HFaci... | Orientat... | |
| 071439400167 | ROLLINGROCK6/16CAN | | 1 | Side | |
| 034100000073 | HIGHLIFE6/16CAN | | 1 | Side | |
| 018200004261 | BUSCHLIGHT6/16CAN | | 1 | Side | |
| 018200000638 | BUSCH6/16CAN | | 1 | Front | |

| Name: 2_1 | | W:26.00 in | D:24.00 in | | |
|----------------|--------------------|------------|------------|-------------|--|
| UPC (12 Digit) | Name | Ast | HFaci... | Orientat... | |
| 071990300784 | COORSLIGHT18/12BTL | | 1 | Side | |
| 071990316006 | COORSLIGHT24/12CAN | | 1 | Top 90 | |
| 018200111686 | BUD24/12CAN | | 1 | Top 90 | |

Rite Aid
Store# 1617
POUGHKEEPSIE , NY

FINAL

Cold

FMB always lead flow in relation to store traffic flow.
 Open a support ticket if planogram flow shown is reversed from actual store traffic flow

Segment 1 of 6 starting view

Shelf Schematic Report



| | | |
|---------------|------------------|------------------|
| RITE AID_1617 | Store # 1617 | # of segments: 6 |
| 018200533082 | BUDLIGHT18/12BTL | 1 Side |

| Name: 2_2 | | W:26.00 in | D:24.00 in |
|----------------|--------------------|------------|----------------------|
| UPC (12 Digit) | Name | Ast | HFaci... Orientat... |
| 071990300173 | COORSLIGHT18/12CAN | | 2 Top 90 |
| 018200112188 | BUD18/12CAN | | 1 Top 90 |
| 018200532184 | BUDLIGHT18/12CAN | | 1 Top 90 |
| 018200531682 | BUDLIGHT24/12CAN | | 1 Top 90 |

| Name: 2_3 | | W:26.00 in | D:24.00 in |
|----------------|-----------------------|------------|----------------------|
| UPC (12 Digit) | Name | Ast | HFaci... Orientat... |
| 018200007712 | BUD12/12BTL | | 1 Side |
| 018200007699 | BUDLIGHT12/12BTL | | 1 Side |
| 018200059902 | MICHELOBULTRA12/12BTL | | 1 Front |

| Name: 2_4 | | W:26.00 in | D:24.00 in |
|----------------|-----------------------------|------------|----------------------|
| UPC (12 Digit) | Name | Ast | HFaci... Orientat... |
| 018200110474 | BUD12/12CAN | | 1 Top 90 |
| 018200202100 | BUDLIGHTPEELSVARIETY12/1... | | 1 Front 90 |
| 018200201448 | MICHELOBULTRAPUREGOLD1... | | 1 Top 90 |
| 613008752200 | ARNOLDPALMERSPIKEDHALF... | | 1 Front 90 |

| Name: 2_5 | | W:26.00 in | D:24.00 in |
|----------------|--------------------------|------------|----------------------|
| UPC (12 Digit) | Name | Ast | HFaci... Orientat... |
| 018200530470 | BUDLIGHT12/12CAN | | 1 Top 90 |
| 723830212121 | LAGUNITASIPA12/12CAN | | 1 Top 90 |
| 851559007015 | MILLHOUSEKOLDONE4/16CAN | | 1 Front |
| 819578011031 | TWOROADSLILHEAVEN6/12BTL | | 1 Side |
| 041827002068 | HARPOONSEASONAL6/12BTL | | 1 Side |

Rite Aid
Store# 1617
POUGHKEEPSIE , NY

FINAL

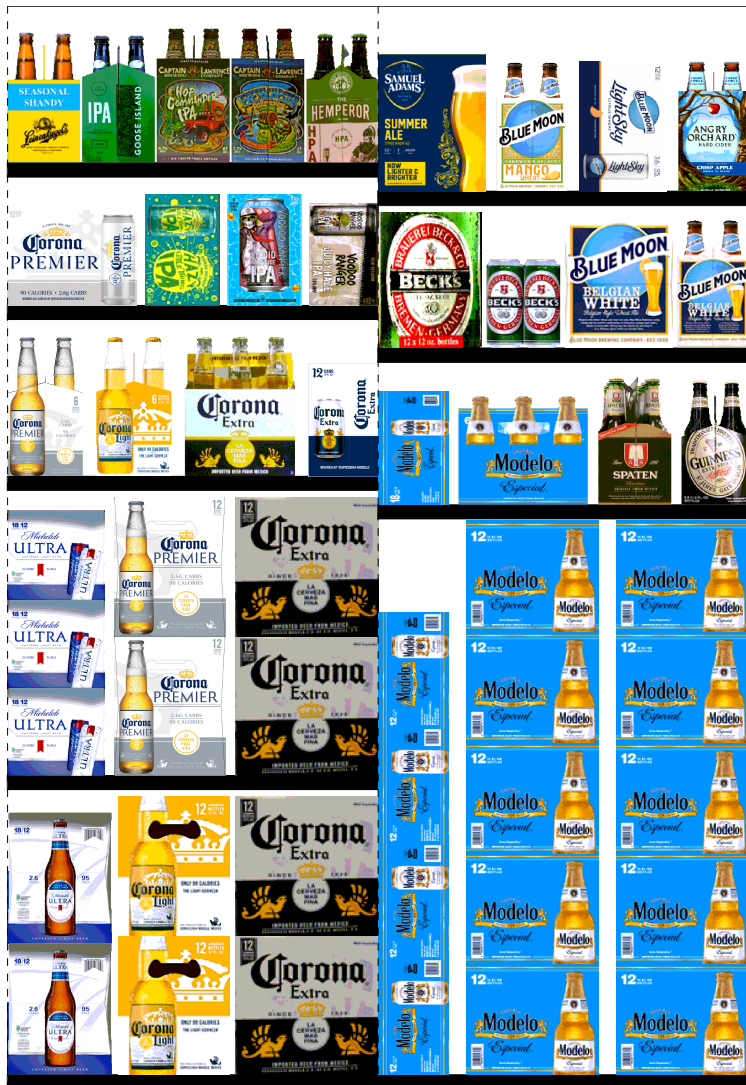
Cold

FMB always lead flow in relation to store traffic flow.
 Open a support ticket if planogram flow shown is reversed from actual store traffic flow

Segment 3 of 6 starting view

Shelf Schematic Report

RITE AID_1617 Store # 1617 # of segments: 6



← 2 ft 2 in

2 ft 2 in →

| Name: 3_1 | | W:26.00 in | D:24.00 in | |
|----------------|-----------------------|------------|------------|-------------|
| UPC (12 Digit) | Name | Ast | HFaci... | Orientat... |
| 018200966248 | MICHELOBULTRA18/12BTL | | 1 | Side |
| 080660956756 | CORONALIGHT12/12BTL | | 1 | Side |
| 080660956152 | CORONA12/12BTL | | 1 | Front |

| Name: 3_2 | | W:26.00 in | D:24.00 in | |
|----------------|-----------------------|------------|------------|-------------|
| UPC (12 Digit) | Name | Ast | HFaci... | Orientat... |
| 018200967214 | MICHELOBULTRA18/12CAN | | 1 | Side 90 |
| 033544950425 | CORONAPREMIER12/12BTL | | 1 | Side |
| 080660956152 | CORONA12/12BTL | | 1 | Front |

| Name: 3_3 | | W:26.00 in | D:24.00 in | |
|----------------|----------------------|------------|------------|-------------|
| UPC (12 Digit) | Name | Ast | HFaci... | Orientat... |
| 033544950418 | CORONAPREMIER6/12BTL | | 1 | Side |
| 080660956251 | CORONALIGHT6/12BTL | | 1 | Side |
| 080660956053 | CORONA6/12BTL | | 1 | Front |
| 080660956954 | CORONA12/12CAN | | 1 | Side |

| Name: 3_4 | | W:26.00 in | D:24.00 in | |
|----------------|---------------------------|------------|------------|-------------|
| UPC (12 Digit) | Name | Ast | HFaci... | Orientat... |
| 033544950449 | CORONAPREMIER12/12CAN | | 1 | Front |
| 083783110104 | SIERRANEVADHAZYLITTLET... | | 1 | Top 90 |
| 754527009946 | NEWBELGIUMVOODOOROTAT... | | 1 | Top 90 |
| 754527008857 | NEWBELGIUMVOODOOJUICY... | | 1 | Front 90 |

| Name: 3_5 | | W:26.00 in | D:24.00 in | |
|----------------|-----------------------------|------------|------------|-------------|
| UPC (12 Digit) | Name | Ast | HFaci... | Orientat... |
| 034100516055 | LEINIESSEASONALPRIMARY6/... | | 1 | Side |
| 736920111327 | GOOSEISLANDIPA6/12BTL | | 1 | Side |
| 817606010209 | CAPTAINLAWRENCEIPA6/12BTL | | 1 | Side |
| 817606010001 | CAPTAINLAWRENCEFRESHC... | | 1 | Side |
| 754527008611 | NEWBELGIUMHEMPERORHPA... | | 1 | Side |

| Name: 4_3 | | W:26.00 in | D:24.00 in | |
|----------------|------------------------|------------|------------|-------------|
| UPC (12 Digit) | Name | Ast | HFaci... | Orientat... |
| 080660957159 | MODELOESPECIAL12/12CAN | | 1 | Side |
| 080660957579 | MODELOESPECIAL12/12BTL | | 2 | Side |

Name: 4_2 W:26.00 in D:24.00 in

Rite Aid

Store# 1617

POUGHKEEPSIE , NY

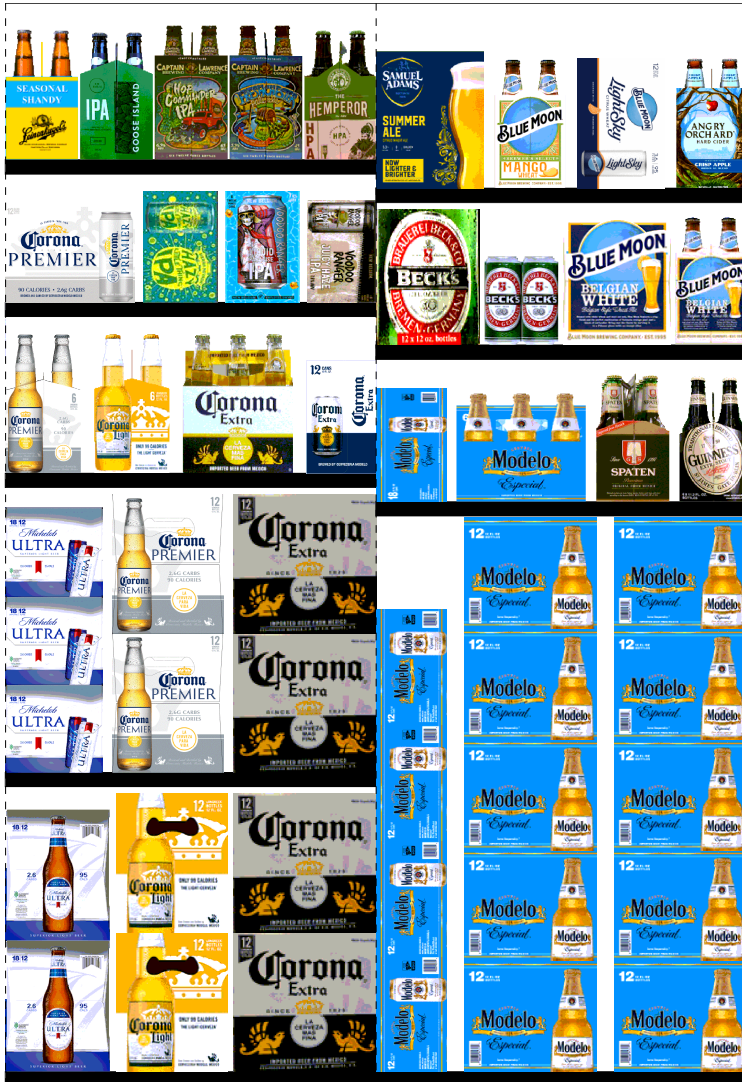
FINAL

Cold

FMB always lead flow in relation to store traffic flow.
Open a support ticket if planogram flow shown is reversed from actual store traffic flow

Segment 3 of 6 starting view

Shelf Schematic Report



← 2 ft 2 in ×

← 2 ft 2 in →

| UPC (12 Digit) | Name | Ast | HFaci... | Orientat... |
|----------------|----------------------------|-----|----------|-------------|
| 080660957111 | MODELOESPECIAL18/12CAN | | 1 | Side |
| 080660957654 | MODELOESPECIAL6/12BTL | | 1 | Front |
| 088394000028 | SPATENPREMIUMLAGER6/12B... | | 1 | Side |
| 083820123937 | GUINNESSEXTRASTOUT6/12B... | | 1 | Side |

| Name: 4_4 | | W:26.00 in | D:24.00 in | | |
|----------------|----------------------------|------------|------------|-------------|--|
| UPC (12 Digit) | Name | Ast | HFaci... | Orientat... | |
| 082488123006 | BECKS12/12BTL | | 1 | Side | |
| 082488123778 | BECKS4/16CAN | | 1 | Front | |
| 071990095161 | BLUEMOONBELGIANWHITE12/... | | 1 | Side | |
| 071990095116 | BLUEMOONBELGIANWHITE6/1... | | 1 | Side | |

| Name: 4_1 | | W:26.00 in | D:24.00 in | | |
|----------------|---------------------------|------------|------------|-------------|--|
| UPC (12 Digit) | Name | Ast | HFaci... | Orientat... | |
| 087692011033 | SAMUELADAMSSEASONAL12/... | | 1 | Side | |
| 071990095611 | BLUEMOONMANGOWHEAT6/1... | | 1 | Side | |
| 071990095925 | BLUEMOONLIGHTSKY12/12CAN | | 1 | Front 90 | |
| 087692821021 | ANGRYORCHARDCRISPAPPL... | | 1 | Side | |

Rite Aid
Store# 1617
POUGHKEEPSIE , NY

FINAL

Cold

FMB always lead flow in relation to store traffic flow.
 Open a support ticket if planogram flow shown is reversed from actual store traffic flow

Segment 5 of 6 starting view

Shelf Schematic Report

RITE AID_1617 Store # 1617 # of segments: 6



| Name: 5_1 | | W:26.00 in | D:24.00 in | | |
|----------------|------------------|------------|------------|-------------|--|
| UPC (12 Digit) | Name | Ast | HFaci... | Orientat... | |
| 072890000200 | HEINEKEN12/12CAN | | 1 | Side | |
| 072890000163 | HEINEKEN12/12BTL | | 2 | Front | |

| Name: 5_4 | | W:26.00 in | D:24.00 in | | |
|----------------|-----------------------------|------------|------------|-------------|--|
| UPC (12 Digit) | Name | Ast | HFaci... | Orientat... | |
| 072890001597 | HEINEKENLIGHT12/12BTL | | 1 | Side | |
| 072890000835 | HEINEKEN4/16CAN | | 1 | Front | |
| 072890000118 | HEINEKEN6/12BTL | | 1 | Side | |
| 072890006219 | HEINEKEN0.0NEARBEER6/12B... | | 1 | Side | |

| Name: 5_3 | | W:26.00 in | D:24.00 in | | |
|----------------|---------------------------|------------|------------|-------------|--|
| UPC (12 Digit) | Name | Ast | HFaci... | Orientat... | |
| 087692003786 | TWISTEDTEAVARIETY12/12CAN | | 1 | Side | |
| 786150000014 | STELLAARTOIS6/11.2BTL | | 1 | Side | |
| 181954000046 | PERONI12/11.2BTL | | 1 | Side | |
| 786150000144 | STELLAARTOIS12/11.2BTL | | 1 | Side | |

| Name: 5_2 | | W:26.00 in | D:24.00 in | | |
|----------------|----------------------------|------------|------------|-------------|--|
| UPC (12 Digit) | Name | Ast | HFaci... | Orientat... | |
| 018200201790 | NATURALLIGHTSELTZERVARI... | | 1 | Side | |
| 018200202087 | BUDLIGHTSELTZERVARIETY1... | | 1 | Top 90 | |
| 033544000434 | CORONASELTZERVARIETY12/... | | 1 | Top 90 | |
| 034100012328 | VIZZYVARIETY12/12CAN(A) | | 1 | Top 90 | |

| Name: 5_5 | | W:26.00 in | D:24.00 in | | |
|----------------|----------------------------|------------|------------|-------------|--|
| UPC (12 Digit) | Name | Ast | HFaci... | Orientat... | |
| 033544000137 | CORONAVARIETYREFRESCA1... | | 1 | Front 90 | |
| 018200202179 | BUDLIGHTSELTZERVARIETYR... | | 1 | Front 90 | |
| 082000781424 | SMIRNOFFSPIKEDSPARKLING... | | 1 | Top 90 | |
| 071990000158 | COORSHARDSELTZERVARIET... | | 1 | Front 90 | |

| Name: 6_1 | | W:26.00 in | D:24.00 in | | |
|----------------|----------------------------|------------|------------|-------------|--|
| UPC (12 Digit) | Name | Ast | HFaci... | Orientat... | |
| 63598548904 | WHITECLAWVARIETY12/12CA... | | 2 | Side 90 | |
| 635985100331 | WHITECLAWMANGO12/12CAN | | 1 | Side 90 | |
| 635985260899 | WHITECLAWBLACKCHERRY12... | | 1 | Side 90 | |

Name: 6_5 W:26.00 in D:24.00 in

Rite Aid
Store# 1617
POUGHKEEPSIE , NY

FINAL

Cold

FMB always lead flow in relation to store traffic flow.
 Open a support ticket if planogram flow shown is reversed from actual store traffic flow

Segment 5 of 6 starting view

Shelf Schematic Report



| UPC (12 Digit) | Name | Ast | HFaci... | Orientat... |
|----------------|-----------------------------|-----|----------|-------------|
| 087692009917 | TRULYLEMONADEVARIETY12/... | | 1 | Side 90 |
| 635985260875 | WHITECLAWMANGO6/12CAN | | 1 | Side |
| 635985200253 | WHITECLAWBLACKCHERRY6/... | | 1 | Side |
| 635985000211 | WHITECLAW70PINEAPPLE6/12... | | 1 | Side |
| 635985800064 | WHITECLAWVARIETY12/12CA... | | 1 | Side 90 |

| Name: 6_2 | | W:26.00 in | D:24.00 in | | |
|----------------|-----------------------------|------------|------------|-------------|--|
| UPC (12 Digit) | Name | Ast | HFaci... | Orientat... | |
| 087692006787 | TRULYWILDBERRY6/12CAN | | 1 | Top 90 | |
| 087692008040 | TRULYVARIETYTROPICAL12/1... | | 1 | Top 90 | |
| 087692006862 | TRULYVARIETYBERRY12/12C... | | 1 | Top 90 | |
| 087692004240 | TRULYVARIETYCITRUS12/12C... | | 1 | Top 90 | |

| Name: 6_3 | | W:26.00 in | D:24.00 in | | |
|----------------|--------------------------|------------|------------|-------------|--|
| UPC (12 Digit) | Name | Ast | HFaci... | Orientat... | |
| 018200250132 | NATTYDADDY1/25CAN | | 1 | Front | |
| 071990480240 | KEYSTONELIGHT1/24CAN | | 1 | Front | |
| 071990477127 | KEYSTONEICE1/24CAN | | 1 | Front | |
| 034100008208 | MILWAUKEESBESTICE1/24CAN | | 1 | Front | |
| 071439006017 | ROLLINGROCK1/25CAN | | 1 | Front | |
| 034100000059 | HIGHLIFE1/24CAN | | 1 | Front | |
| 071990100711 | COORSBANQUET1/24CAN | | 1 | Front | |
| 071990300654 | COORSLIGHT1/24CAN | | 1 | Front | |

| Name: 6_4 | | W:26.00 in | D:24.00 in | | |
|----------------|-------------------------|------------|------------|-------------|--|
| UPC (12 Digit) | Name | Ast | HFaci... | Orientat... | |
| 018200250019 | BUDLIGHT1/25CAN | | 1 | Front | |
| 723830011922 | LAGUNITASIPA1/19.2CAN | | 1 | Front | |
| 089826001422 | TECATE1/24CAN | | 1 | Front | |
| 080660956435 | CORONA1/24CAN | | 1 | Front | |
| 080660957210 | MODELOESPECIAL1/24CAN | | 1 | Front | |
| 072890001191 | HEINEKEN1/24CAN | | 1 | Front | |
| 070897183315 | FOSTERSPREMIUM1/25.4CAN | | 1 | Front | |
| 070897013315 | FOSTERS1/25.4CAN | | 1 | Front | |

| Name: 6_6 | | W:26.00 in | D:24.00 in | | |
|----------------|---------------------------|------------|------------|-------------|--|
| UPC (12 Digit) | Name | Ast | HFaci... | Orientat... | |
| 087692832317 | TWISTEDTEAORIGINAL1/24CAN | | 1 | Front | |
| 635985245834 | MIKESHARDERLEMONADE1/2... | | 1 | Side | |
| 635985249856 | MIKESHARDERCranberryL... | | 1 | Front | |

Rite Aid
Store# 1617
POUGHKEEPSIE , NY

FINAL

Cold

FMB always lead flow in relation to store traffic flow.
 Open a support ticket if planogram flow shown is reversed from actual store traffic flow

Segment 5 of 6 starting view

Shelf Schematic Report

| RITE AID_1617 | Store # 1617 | # of segments: 6 | | |
|---------------|---------------------------|------------------|---|-------|
| 070310014837 | SEAGRAMSESCAPESSPIKEDJ... | | 1 | Front |
| 034100003234 | REDDSWICKED1/24CAN | | 1 | Front |
| 087692010142 | TRULYLEMONADE1/24CAN | | 1 | Front |
| 087692009511 | TRULYWILDBERRY1/24CAN | | 1 | Front |
| 635985260387 | WHITECLAWBLACKCHERRY1/... | | 1 | Side |
| 635985260394 | WHITECLAWMANGO1/19.2CAN | | 1 | Front |



Rite Aid

Store# 1617

POUGHKEEPSIE , NY

Cold

FMB always lead flow in relation to store traffic flow.
Open a support ticket if planogram flow shown is reversed from actual store traffic flow



Rite Aid
Store# 1617
POUGHKEEPSIE , NY

FINAL Cold FMB always lead flow in relation to store traffic flow.
Open a support ticket if planogram flow shown is reversed from actual store traffic flow Segment 1 of 5 starting view

Shelf Schematic Report

RITE AID_1617 Store # 1617 # of segments: 5



| Name: 3_1 | | W:240.00 in | D:16.00 in | |
|----------------|-----------------------|-------------|------------|-------------|
| UPC (12 Digit) | Name | Ast | HFaci... | Orientat... |
| 071990480455 | KEYSTONELIGHT15/12CAN | | 1 | Side 90 |
| 034100015091 | HIGHLIFE12/12BTL | | 1 | Front |
| 022100112193 | PABST30/12CAN | | 1 | Side |
| 071990300302 | COORSLIGHT30/12CAN | | 1 | Front |
| 034100573065 | LITE24/12CAN | | 1 | Side 90 |
| 018200111686 | BUD24/12CAN | | 1 | Side 90 |
| 018200531682 | BUDLIGHT24/12CAN | | 1 | Side 90 |
| 018200533082 | BUDLIGHT18/12BTL | | 1 | Side |
| 018200530302 | BUDLIGHT30/12CAN | | 1 | Side |
| 018200059902 | MICHELOBULTRA12/12BTL | | 1 | Side |
| 018200967153 | MICHELOBULTRA24/12CAN | | 1 | Side |

| Name: 3_2 | | W:240.00 in | D:16.00 in | |
|----------------|--------------------------|-------------|------------|-------------|
| UPC (12 Digit) | Name | Ast | HFaci... | Orientat... |
| 018200610479 | BUSCH12/12CAN | | 1 | Top 90 |
| 071439344508 | ROLLINGROCK12/12CAN | | 1 | Top 90 |
| 034100016364 | HIGHLIFE12/12CAN | | 1 | Top 90 |
| 022100004122 | PABSTEASY12/12CAN | | 1 | Top 90 |
| 022100001701 | PABST12/12CAN | | 1 | Top 90 |
| 071990316006 | COORSLIGHT24/12CAN | | 1 | Side 90 |
| 034100573409 | LITE18/12CAN | | 1 | Side 90 |
| 018200110474 | BUD12/12CAN | | 1 | Top |
| 018200532184 | BUDLIGHT18/12CAN | | 1 | Side 90 |
| 018200530470 | BUDLIGHT12/12CAN | | 2 | Side 90 |
| 018200200113 | MICHELOBULTRA8/16BTL(AL) | | 1 | Front |
| 018200966248 | MICHELOBULTRA18/12BTL | | 1 | Front |

| Name: 3_3 | | W:240.00 in | D:16.00 in | |
|----------------|-----------------------|-------------|------------|-------------|
| UPC (12 Digit) | Name | Ast | HFaci... | Orientat... |
| 018200200779 | NATURALLIGHT15/12CAN | | 1 | Side 90 |
| 018200284434 | NATURALICE15/12CAN | | 1 | Side 90 |
| 018200200786 | NATTYDADDY15/12CAN | | 1 | Side 90 |
| 071990300692 | COORSLIGHT12/12BTL | | 2 | Side |
| 071990301040 | COORSLIGHT9/16BTL(AL) | | 1 | Front |
| 034100575090 | LITE12/12BTL | | 1 | Front |
| 018200007712 | BUD12/12BTL | | 1 | Front |
| 018200007699 | BUDLIGHT12/12BTL | | 1 | Front |
| 018200089893 | BUDLIGHT8/16CAN | | 1 | Top 90 |

Rite Aid
Store# 1617
POUGHKEEPSIE , NY

FINAL

Cold

FMB always lead flow in relation to store traffic flow.
 Open a support ticket if planogram flow shown is reversed from actual store traffic flow

Segment 1 of 5 starting view

Shelf Schematic Report

| | | |
|---------------|----------------------|------------------|
| RITE AID_1617 | Store # 1617 | # of segments: 5 |
| 018200059896 | MICHELOBULTRA6/12BTL | 2 Side |

| UPC (12 Digit) | Name | Ast | HFaci... | Orientat... |
|----------------|----------------------------|-----|----------|-------------|
| 018200000638 | BUSCH6/16CAN | | 1 | Side |
| 018200004261 | BUSCHLIGHT6/16CAN | | 1 | Side |
| 018200258787 | NATTYDADDY6/16CAN | | 1 | Side |
| 034100000073 | HIGHLIFE6/16CAN | | 1 | Side |
| 071990000080 | COORSLIGHT6/12CAN | | 1 | Side |
| 071990300050 | COORSLIGHT6/12BTL | | 2 | Side |
| 034100576363 | LITE12/12CAN | | 1 | Top |
| 018200008344 | BUD6/12BTL | | 2 | Side |
| 018200000188 | BUD6/16CAN | | 1 | Side |
| 018200008337 | BUDLIGHT6/12BTL | | 2 | Side |
| 018200202018 | BUDWEISERNITROGOLD12/12... | | 1 | Top 90 |
| 018200149900 | BUDLIGHTLIME12/12BTL | | 1 | Front |
| 018200189920 | BUDLIGHTPLATINUM12/12BTL | | 1 | Front |



Rite Aid
Store# 1617
POUGHKEEPSIE , NY

FINAL

Cold

FMB always lead flow in relation to store traffic flow.
 Open a support ticket if planogram flow shown is reversed from actual store traffic flow

Segment 3 of 5 starting view

Shelf Schematic Report

RITE AID_1617 Store # 1617 # of segments: 5

| Name: 3_1 | | W:240.00 in | D:16.00 in | |
|----------------|-----------------------------|-------------|------------|-------------|
| UPC (12 Digit) | Name | Ast | HFaci... | Orientat... |
| 033544950531 | CORONAFAMILIAR12/12BTL | | 1 | Side |
| 080660956800 | CORONA18/12BTL | | 1 | Side |
| 080660957159 | MODELOESPECIAL12/12CAN | | 1 | Side 90 |
| 033544950272 | MODELOESPECIAL18/12BTL | | 1 | Side |
| 072890000200 | HEINEKEN12/12CAN | | 1 | Side 90 |
| 072890001528 | HEINEKEN18/12BTL | | 1 | Side |
| 071990170523 | BLUEMOONBELGIANWHITE15... | | 1 | Side 90 |
| 071990095161 | BLUEMOONBELGIANWHITE12/... | | 1 | Side |
| 087692011033 | SAMUELADAMSSEASONAL12/... | | 1 | Side |
| 087692831389 | TWISTEDTEAORIGINAL18/12C... | | 1 | Side 90 |
| 635985129981 | MIKESHARDVARIETY12/11.2BTL | | 1 | Side |
| 087692009917 | TRULYLEMONADEVARIETY12/... | | 1 | Side 90 |

| Name: 3_2 | | W:240.00 in | D:16.00 in | |
|----------------|----------------------------|-------------|------------|-------------|
| UPC (12 Digit) | Name | Ast | HFaci... | Orientat... |
| 080660956954 | CORONA12/12CAN | | 1 | Side 90 |
| 080660957159 | MODELOESPECIAL12/12CAN | | 1 | Side 90 |
| 786150000168 | STELLAARTOIS12/11.2CAN | | 1 | Top 90 |
| 181954000046 | PERONI12/11.2BTL | | 1 | Front |
| 072890001597 | HEINEKENLIGHT12/12BTL | | 1 | Front |
| 736920111327 | GOOSEISLANDIPA6/12BTL | | 2 | Side |
| 754527008611 | NEWBELGIUMHEMPERORHPA... | | 2 | Side |
| 087692100140 | SAMUELADAMS BOSTON LAGE... | | 1 | Front |
| 635985100621 | MIKESHARDLEMONADE6/11.2... | | 2 | Side |
| 087692007814 | TRULYROSE6/12CAN | | 1 | Side 90 |

| Name: 3_3 | | W:240.00 in | D:16.00 in | |
|----------------|----------------------------|-------------|------------|-------------|
| UPC (12 Digit) | Name | Ast | HFaci... | Orientat... |
| 033544950517 | CORONAFAMILIAR6/12BTL | | 2 | Side |
| 080660956053 | CORONA6/12BTL | | 2 | Side |
| 080660957111 | MODELOESPECIAL18/12CAN | | 1 | Side 90 |
| 786150000014 | STELLAARTOIS6/11.2BTL | | 2 | Side |
| 072890004116 | HEINEKENLIGHT4/16CAN | | 1 | Front |
| 072890000118 | HEINEKEN6/12BTL | | 2 | Side |
| 642860900245 | FOUNDERSALLDAYSESSIONI... | | 1 | Side 90 |
| 041827002068 | HARPOONSEASONAL6/12BTL | | 2 | Side |
| 087692100126 | SAMUELADAMS BOSTON LAGE... | | 2 | Side |
| 635985067443 | MIKESHARDBLACKCHERRYLE... | | 2 | Side |



Rite Aid
Store# 1617
POUGHKEEPSIE , NY

FINAL

Cold

FMB always lead flow in relation to store traffic flow.
 Open a support ticket if planogram flow shown is reversed from actual store traffic flow

Segment 3 of 5 starting view

Shelf Schematic Report

RITE AID_1617 Store # 1617 # of segments: 5

| UPC (12 Digit) | Name | Ast | HFaci... | Orientat... |
|----------------|----------------------------|-----|----------|-------------|
| 033544950418 | CORONAPREMIER6/12BTL | | 2 | Side |
| 080660956251 | CORONALIGHT6/12BTL | | 2 | Side |
| 080660957654 | MODELOESPECIAL6/12BTL | | 2 | Side |
| 083820123937 | GUINNESSEXTRASTOUT6/12B... | | 1 | Front |
| 072890000835 | HEINEKEN4/16CAN | | 1 | Front |
| 780369608061 | PEAKORGANICIPA6/12CAN | | 1 | Side |
| 817606010209 | CAPTAINLAWRENCEIPA6/12BTL | | 2 | Side |
| 817606010001 | CAPTAINLAWRENCEFRESHC... | | 1 | Front |
| 851559007015 | MILLHOUSEKOLDONE4/16CAN | | 1 | Front |
| 087692821021 | ANGRYORCHARDCRISPAPPL... | | 2 | Side |
| 018200209932 | BUDLIGHTLIMESTRAWBERRIT... | | 1 | Top 90 |
| 613008752200 | ARNOLDPALMERSPIKEDHALF... | | 1 | Front 90 |



Rite Aid
Store# 1617
POUGHKEEPSIE , NY

FINAL

Cold

FMB always lead flow in relation to store traffic flow.
 Open a support ticket if planogram flow shown is reversed from actual store traffic flow

Segment 5 of 5 starting view

Shelf Schematic Report

RITE AID_1617 Store # 1617 # of segments: 5



| Name: 3_1 | | W:240.00 in | D:16.00 in | | |
|----------------|-----------------------------|-------------|------------|-------------|----|
| UPC (12 Digit) | Name | Ast | HFaci... | Orientat... | |
| 087692006862 | TRULYVARIETYBERRY12/12C... | | 1 | Side | 90 |
| 087692004240 | TRULYVARIETYCITRUS12/12C... | | 1 | Side | 90 |
| 087692008040 | TRULYVARIETYTROPICAL12/1... | | 1 | Side | 90 |
| 635985100331 | WHITECLAWMANGO12/12CAN | | 1 | Side | 90 |
| 635985260899 | WHITECLAWBLACKCHERRY12... | | 1 | Side | 90 |
| 635985800064 | WHITECLAWVARIETY12/12CA... | | 1 | Side | 90 |
| 635985548904 | WHITECLAWVARIETY12/12CA... | | 2 | Side | 90 |

| Name: 3_2 | | W:240.00 in | D:16.00 in | | |
|----------------|----------------------------|-------------|------------|-------------|----|
| UPC (12 Digit) | Name | Ast | HFaci... | Orientat... | |
| 087692004172 | TRULYCOLIMALIME6/12CAN | | 1 | Side | 90 |
| 087692007920 | TRULYBLUEBERRYANDACAI6/... | | 1 | Side | 90 |
| 087692006787 | TRULYWILDBERRY6/12CAN | | 1 | Side | 90 |
| 635985260875 | WHITECLAWMANGO6/12CAN | | 1 | Side | 90 |
| 635985200253 | WHITECLAWBLACKCHERRY6/... | | 1 | Side | 90 |
| 635985200284 | WHITECLAWRUBYGRAPEFRUI... | | 1 | Side | 90 |
| 635985025986 | WHITECLAWNATURALLIME6/1... | | 1 | Side | 90 |
| 635985260660 | WHITECLAWRASPBERRY6/12... | | 1 | Side | 90 |

| Name: 3_3 | | W:240.00 in | D:16.00 in | | |
|----------------|----------------------------|-------------|------------|-------------|--|
| UPC (12 Digit) | Name | Ast | HFaci... | Orientat... | |
| 080432802908 | SEAGRAMSESCAPESVARIETY... | | 1 | Front | |
| 082000781424 | SMIRNOFFSPIKEDSPARKLING... | | 1 | Side | |
| 071990000158 | COORSHARDELTZERVARIET... | | 1 | Side | |
| 018200202179 | BUDLIGHTSELTZERVARIETYR... | | 1 | Side | |
| 018200202087 | BUDLIGHTSELTZERVARIETY1... | | 1 | Side | |
| 034100012328 | VIZZYVARIETY12/12CAN(A) | | 1 | Side | |
| 033544000434 | CORONASELTZERVARIETY12/... | | 1 | Side | |

| Name: 3_4 | | W:240.00 in | D:16.00 in | | |
|----------------|----------------------------|-------------|------------|-------------|--|
| UPC (12 Digit) | Name | Ast | HFaci... | Orientat... | |
| 034100012229 | MOVVARIETY4/8.4CAN | | 2 | Front | |
| 022100050020 | PABSTHARDCOFFEE4/11CAN | | 1 | Side | |
| 033544000137 | CORONAVARIETYREFRESCA1... | | 1 | Side | |
| 033544950678 | CORONAREFRESGUAVALI... | | 1 | Side | |
| 033544950630 | CORONAREFRESCAPASSION... | | 1 | Side | |
| 853897002271 | BONANDVIVSPIKEDSELTZERV... | | 1 | Side | |
| 018200285486 | BONANDVIVSPIKEDSELTZERV... | | 1 | Side | |

Rite Aid

Store# 1617

POUGHKEEPSIE , NY

FINAL

Cold

FMB always lead flow in relation to store traffic flow.
Open a support ticket if planogram flow shown is reversed from actual store traffic flow

Segment 5 of 5 starting view

Shelf Schematic Report

| | | | |
|---------------|----------------------------|------------------|------|
| RITE AID_1617 | Store # 1617 | # of segments: 5 | |
| 018200202506 | BUDLIGHTPLATINUMSELTZER... | 1 | Side |

