

Rite Aid

Store# 10551

MIDDLETOWN, NY

OPEN

FMB always lead flow in relation to store traffic flow.
Open a support ticket if planogram flow shown is reversed from actual store traffic flow



Rite Aid
Store# 10551
MIDDLETOWN, NY

FINAL

OPEN

FMB always lead flow in relation to store traffic flow.
 Open a support ticket if planogram flow shown is reversed from actual store traffic flow

Segment 1 of 6 starting view

Shelf Schematic Report

RITE AID_10551 Store # 10551 # of segments: 6

COLD WALK-IN COLD WALK-IN



| Name: 1_1 | W:36.00 in | D:24.00 in | | | |
|----------------|----------------------------|------------|----------|-------------|--|
| UPC (12 Digit) | Name | Ast | HFaci... | Orientat... | |
| 635985800064 | WHITECLAWVARIETY12/12CA... | PRO... | 2 | Front | |
| 087692009917 | TRULYLEMONADEVARIETY12/... | PRO... | 1 | Front | |
| 071990000158 | COORSHARDSELTZERVARIET... | New | 1 | Front | |

| Name: 1_2 | W:36.00 in | D:24.00 in | | | |
|----------------|-----------------------------|------------|----------|-------------|--|
| UPC (12 Digit) | Name | Ast | HFaci... | Orientat... | |
| 635985548904 | WHITECLAWVARIETY12/12CA... | Core | 1 | Front | |
| 635985548904 | WHITECLAWVARIETY12/12CA... | Core | 1 | Side | |
| 087692008040 | TRULYVARIETYTROPICAL12/1... | Core | 1 | Side | |
| 087692004240 | TRULYVARIETYCITRUS12/12C... | Core | 1 | Side | |
| 018200202087 | BUDLIGHTSELTZERVARIETY1... | PRO... | 1 | Side | |

| Name: 1_3 | W:36.00 in | D:24.00 in | | | |
|----------------|----------------------------|------------|----------|-------------|--|
| UPC (12 Digit) | Name | Ast | HFaci... | Orientat... | |
| 635985260899 | WHITECLAWBLACKCHERRY12... | Core | 2 | Side | |
| 635985100331 | WHITECLAWMANGO12/12CAN | | 1 | Side | |
| 087692006862 | TRULYVARIETYBERRY12/12C... | Core | 1 | Side | |
| 034100012328 | VIZZYVARIETY12/12CAN(A) | PRO... | 1 | Front | |

| Name: 2_2 | W:180.00 in | D:24.00 in | | | |
|----------------|-----------------------------|------------|----------|-------------|--|
| UPC (12 Digit) | Name | Ast | HFaci... | Orientat... | |
| 635985260660 | WHITECLAWRASPBERRY6/12... | PRO... | 1 | Side | |
| 635985200284 | WHITECLAWRUBYGRAPEFRU... | PRO... | 1 | Side | |
| 635985000211 | WHITECLAW70PINEAPPLE6/12... | PRO... | 1 | Side | |
| 087692007920 | TRULYBLUEBERRYANDACAI6/... | PRO... | 1 | Side | |
| 087692006787 | TRULYWILDBERRY6/12CAN | | 1 | Side | |
| 087692009658 | TRULYPINEAPPLE6/12CAN | PRO... | 1 | Side | |
| 087692009894 | TRULYWATERMELONKIWI6/12... | PRO... | 1 | Side | |
| 018200202506 | BUDLIGHTPLATINUMSELTZER... | | 1 | Side | |
| 018200202179 | BUDLIGHTSELTZERVARIETYR... | | 1 | Side | |
| 070310016633 | LABATTBLUELIGHTSELTZERV... | New | 1 | Side | |
| 041827701121 | ARCTICCHILLHARDSELTZERV... | PRO... | 1 | Side | |
| 033544000137 | CORONAVARIETYREFRESCA1... | Core | 1 | Side | |
| 033544950678 | CORONAREFRESCAGUAVALI... | | 1 | Side | |
| 034100012229 | MOVVARIETY4/8.4CAN | | 1 | Front | |
| 635985067443 | MIKESHARDBLACKCHERRYLE... | | 2 | Side | |

Name: 2_1 W:144.00 in D:24.00 in

Rite Aid
Store# 10551
MIDDLETOWN , NY

FINAL

OPEN

FMB always lead flow in relation to store traffic flow.
 Open a support ticket if planogram flow shown is reversed from actual store traffic flow

Segment 1 of 6 starting view

Shelf Schematic Report

| RITE AID_10551 Store # 10551 | | # of segments: 6 | |
|------------------------------|-----------------------------|------------------|----------------------|
| UPC (12 Digit) | Name | Ast | HFaci... Orientat... |
| 033544000434 | CORONASELTZERVARIETY12/... | PRO... | 1 Front |
| 635985129981 | MIKESHARDVARIETY12/11.2BTL | Core | 1 Front |
| 034100516079 | LEINIESESEASONALPRIMARY1... | | 1 Side |
| 071990095161 | BLUEMOONBELGIANWHITE12/... | Core | 1 Side |
| 080660956800 | CORONA18/12BTL | Core | 2 Side |



Rite Aid
Store# 10551
MIDDLETOWN , NY

FINAL

OPEN

FMB always lead flow in relation to store traffic flow.
 Open a support ticket if planogram flow shown is reversed from actual store traffic flow

Segment 3 of 6 starting view

Shelf Schematic Report

RITE AID_10551 Store # 10551 # of segments: 6

| Name: 2_2 | | W:180.00 in | D:24.00 in | | |
|----------------|-----------------------------|-------------|------------|-------------|--|
| UPC (12 Digit) | Name | Ast | HFaci... | Orientat... | |
| 030613000746 | BROOKLYNVARIETY12/12CAN | New | 1 | Side | |
| 817606010209 | CAPTAINLAWRENCEIPA6/12BTL | Core | 2 | Side | |
| 072890000200 | HEINEKEN12/12CAN | Core | 1 | Side | |
| 072890000118 | HEINEKEN6/12BTL | Core | 2 | Side | |
| 072890006219 | HEINEKEN0.0NEARBEER6/12B... | | 2 | Side | |
| 080660956053 | CORONA6/12BTL | Core | 2 | Side | |
| 181954000046 | PERONI12/11.2BTL | | 1 | Side | |
| 018200202100 | BUDLIGHTPEELSVARIETY12/1... | PRO... | 1 | Front | |
| 068213031174 | MOLSONCANADIAN12/12BTL | | 1 | Front | |
| 071990000486 | COORSLIGHT12/12CAN | Core | 1 | Top | |
| 018200530470 | BUDLIGHT12/12CAN | Core | 1 | Side 90 | |

| Name: 2_1 | | W:144.00 in | D:24.00 in | | |
|----------------|-----------------------|-------------|------------|-------------|--|
| UPC (12 Digit) | Name | Ast | HFaci... | Orientat... | |
| 018200967214 | MICHELOBULTRA18/12CAN | Core | 1 | Side 90 | |
| 018200967153 | MICHELOBULTRA24/12CAN | Core | 1 | Top | |
| 071990300173 | COORSLIGHT18/12CAN | Core | 1 | Top | |
| 018200533082 | BUDLIGHT18/12BTL | | 3 | Side | |
| 018200532184 | BUDLIGHT18/12CAN | Core | 1 | Top | |
| 018200112188 | BUD18/12CAN | Core | 1 | Side 90 | |
| 034100573409 | LITE18/12CAN | Core | 1 | Side 90 | |



Rite Aid
Store# 10551
MIDDLETOWN, NY

FINAL

OPEN

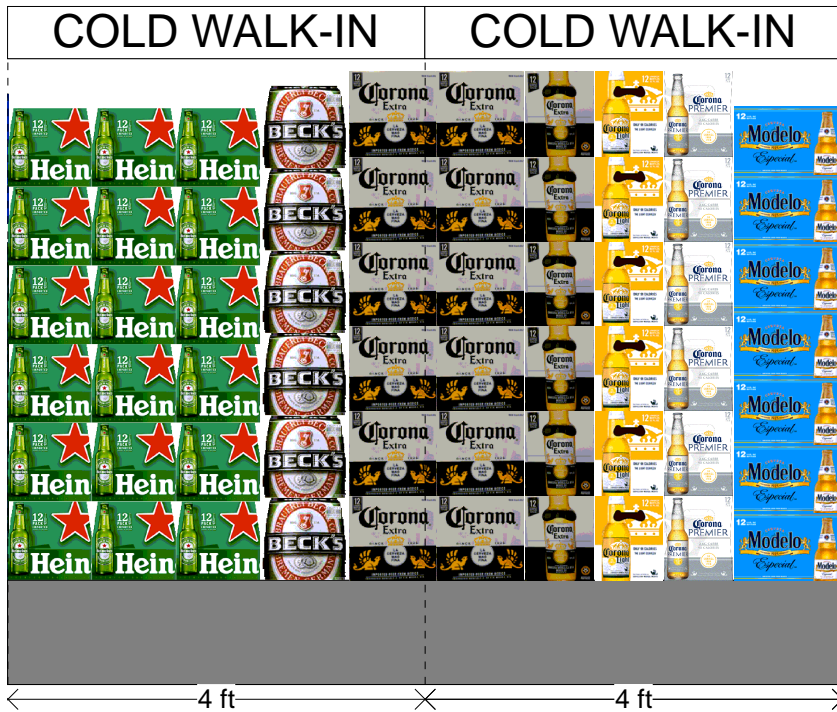
FMB always lead flow in relation to store traffic flow.
 Open a support ticket if planogram flow shown is reversed from actual store traffic flow

Segment 5 of 6 starting view

Shelf Schematic Report

RITE AID_10551 Store # 10551 # of segments: 6

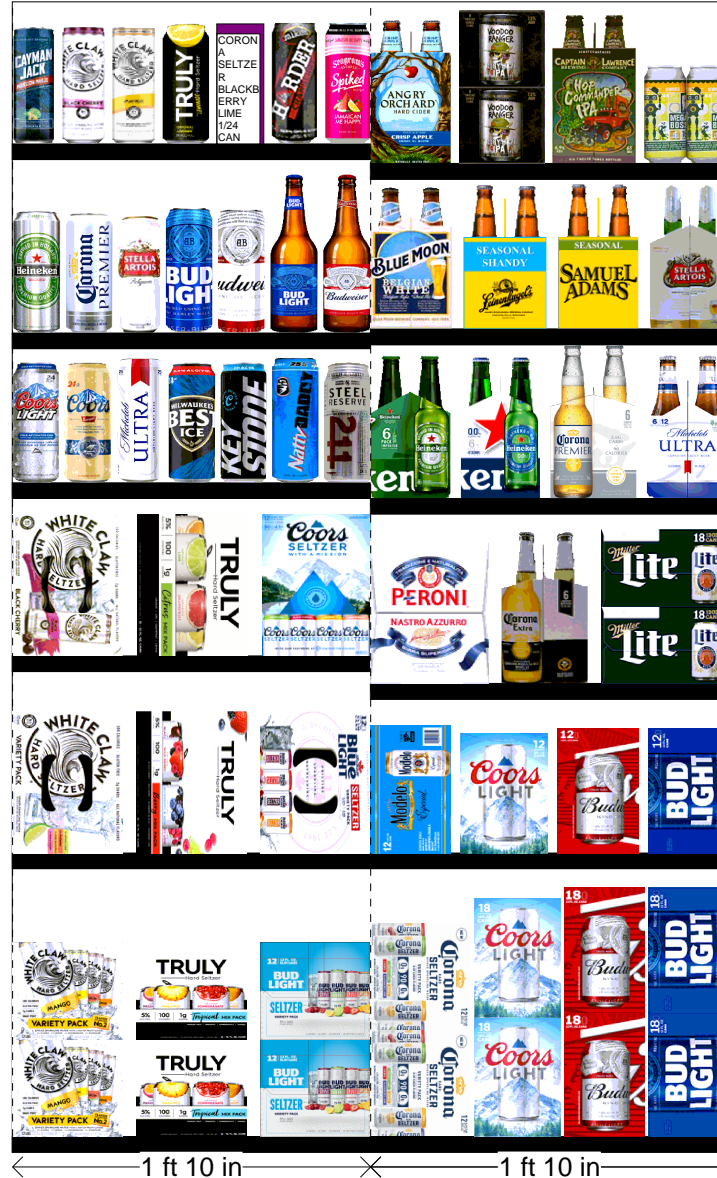
| UPC (12 Digit) | Name | Ast | HFaci... | Orientat... |
|----------------|------------------------|------|----------|-------------|
| 072890000163 | HEINEKEN12/12BTL | Core | 3 | Front |
| 082488123006 | BECKS12/12BTL | Core | 1 | Front |
| 080660956152 | CORONA12/12BTL | Core | 2 | Front |
| 080660956152 | CORONA12/12BTL | Core | 1 | Side |
| 080660956756 | CORONALIGHT12/12BTL | Core | 1 | Side |
| 033544950425 | CORONAPREMIER12/12BTL | Core | 1 | Side |
| 080660957579 | MODELOESPECIAL12/12BTL | Core | 1 | Front |



Rite Aid
 Store# 10551
 MIDDLETOWN, NY

COLD

FMB always lead flow in relation to store traffic flow.
 Open a support ticket if planogram flow shown is reversed from actual store traffic flow



Rite Aid
Store# 10551
MIDDLETOWN , NY

FINAL

COLD

FMB always lead flow in relation to store traffic flow.
 Open a support ticket if planogram flow shown is reversed from actual store traffic flow

Segment 1 of 2 starting view

Shelf Schematic Report

RITE AID_10551 Store # 10551 # of segments: 2



← 1 ft 10 in × 1 ft 10 in →

| Name: 1_1 | | W:22.00 in | D:22.00 in | | |
|----------------|-----------------------------|------------|------------|-------------|--|
| UPC (12 Digit) | Name | Ast | HFaci... | Orientat... | |
| 635985800064 | WHITECLAWVARIETY12/12CA... | PRO... | 1 | Side | |
| 087692008040 | TRULYVARIETYTROPICAL12/1... | Core | 1 | Side | |
| 018200202087 | BUDLIGHTSELTZERVARIETY1... | PRO... | 1 | Side | |

| Name: 1_2 | | W:22.00 in | D:22.00 in | | |
|----------------|----------------------------|------------|------------|-------------|--|
| UPC (12 Digit) | Name | Ast | HFaci... | Orientat... | |
| 635985548904 | WHITECLAWVARIETY12/12CA... | Core | 1 | Top 90 | |
| 087692006862 | TRULYVARIETYBERRY12/12C... | Core | 1 | Top 90 | |
| 070310016633 | LABATTBLUELIGHTSELTZERV... | New | 1 | Top 90 | |

| Name: 1_3 | | W:22.00 in | D:22.00 in | | |
|----------------|-----------------------------|------------|------------|-------------|--|
| UPC (12 Digit) | Name | Ast | HFaci... | Orientat... | |
| 635985260899 | WHITECLAWBLACKCHERRY12... | Core | 1 | Top 90 | |
| 087692004240 | TRULYVARIETYCITRUS12/12C... | Core | 1 | Top 90 | |
| 071990000158 | COORSHARDSELTZERVARIET... | New | 1 | Top 90 | |

| Name: 1_4 | | W:22.00 in | D:22.00 in | | |
|----------------|----------------------------|------------|------------|-------------|--|
| UPC (12 Digit) | Name | Ast | HFaci... | Orientat... | |
| 071990300654 | COORSLIGHT1/24CAN | | 1 | Side | |
| 071990100711 | COORSBANQUET1/24CAN | | 1 | Front | |
| 018200250101 | MICHELOBULTRA1/25CAN | PRO... | 1 | Front | |
| 034100008208 | MILWAUKEESBESTICE1/24CAN | | 1 | Front | |
| 071990477127 | KEYSTONEICE1/24CAN | | 1 | Front | |
| 018200250132 | NATTYDADDY1/25CAN | | 1 | Front | |
| 078250003287 | STEEL RESERVE 211 1/24 CAN | | 1 | Front | |

| Name: 1_5 | | W:22.00 in | D:22.00 in | | |
|----------------|-----------------------|------------|------------|-------------|--|
| UPC (12 Digit) | Name | Ast | HFaci... | Orientat... | |
| 072890001191 | HEINEKEN1/24CAN | | 1 | Front | |
| 033544950470 | CORONAPREMIER1/24CAN | | 1 | Front | |
| 786150001707 | STELLAARTOIS1/19.2CAN | | 1 | Front | |
| 018200250019 | BUDLIGHT1/25CAN | | 1 | Front | |
| 018200250002 | BUD1/25CAN | | 1 | Side | |
| 018200004568 | BUDLIGHT1/18BTL(AL) | | 1 | Side | |
| 018200004551 | BUD1/18BTL | | 1 | Side | |

| Name: 1_6 | | W:22.00 in | D:22.00 in | | |
|----------------|------|------------|------------|-------------|--|
| UPC (12 Digit) | Name | Ast | HFaci... | Orientat... | |

Rite Aid
Store# 10551
MIDDLETOWN , NY

FINAL

COLD

FMB always lead flow in relation to store traffic flow.
 Open a support ticket if planogram flow shown is reversed from actual store traffic flow

Segment 1 of 2 starting view

Shelf Schematic Report



← 1 ft 10 in × 1 ft 10 in →

| RITE AID_10551 Store # 10551 # of segments: 2 | | | | |
|-----------------------------------------------|----------------------------|--------|---|-------|
| 815829010822 | CAYMANJACKMOSCOWMULE... | New | 1 | Front |
| 635985260387 | WHITECLAWBLACKCHERRY1/... | | 1 | Side |
| 635985260394 | WHITECLAWMANGO1/19.2CAN | PRO... | 1 | Front |
| 087692010142 | TRULYLEMONADE1/24CAN | New | 1 | Front |
| 033544000595 | CORONASELTZERBLACKBER... | New | 1 | Front |
| 635985249856 | MIKESHARDERC CranberryL... | PRO... | 1 | Front |
| 070310014837 | SEAGRAMSESCAPESSPIKEDJ... | | 1 | Front |

| Name: 2_1 W:22.00 in D:22.00 in | | | | |
|---------------------------------|----------------------------|--------|----------|-------------|
| UPC (12 Digit) | Name | Ast | HFaci... | Orientat... |
| 033544000434 | CORONASELTZERVARIETY12/... | PRO... | 1 | Side 90 |
| 071990300173 | COORSLIGHT18/12CAN | Core | 1 | Side |
| 018200112188 | BUD18/12CAN | Core | 1 | Side |
| 018200532184 | BUDLIGHT18/12CAN | Core | 1 | Side |

| Name: 2_2 W:22.00 in D:22.00 in | | | | |
|---------------------------------|------------------------|------|----------|-------------|
| UPC (12 Digit) | Name | Ast | HFaci... | Orientat... |
| 080660957159 | MODELOESPECIAL12/12CAN | Core | 1 | Side |
| 071990000486 | COORSLIGHT12/12CAN | Core | 1 | Side |
| 018200110474 | BUD12/12CAN | Core | 1 | Side |
| 018200530470 | BUDLIGHT12/12CAN | Core | 1 | Side |

| Name: 2_3 W:22.00 in D:22.00 in | | | | |
|---------------------------------|------------------|------|----------|-------------|
| UPC (12 Digit) | Name | Ast | HFaci... | Orientat... |
| 181954000046 | PERONI12/11.2BTL | | 1 | Side |
| 080660956053 | CORONA6/12BTL | Core | 1 | Side |
| 034100573409 | LITE18/12CAN | Core | 1 | Side 90 |

| Name: 2_4 W:22.00 in D:22.00 in | | | | |
|---------------------------------|-----------------------------|------|----------|-------------|
| UPC (12 Digit) | Name | Ast | HFaci... | Orientat... |
| 072890000118 | HEINEKEN6/12BTL | Core | 1 | Side |
| 0728900006219 | HEINEKEN0.0NEARBEER6/12B... | | 1 | Side |
| 033544950418 | CORONAPREMIER6/12BTL | | 1 | Side |
| 018200059896 | MICHELOBULTRA6/12BTL | New | 1 | Side |

| Name: 2_5 W:22.00 in D:22.00 in | | | | |
|---------------------------------|-----------------------------|------|----------|-------------|
| UPC (12 Digit) | Name | Ast | HFaci... | Orientat... |
| 071990095116 | BLUEMOONBELGIANWHITE6/1... | Core | 1 | Side |
| 034100516055 | LEINIESSEASONALPRIMARY6/... | | 1 | Side |
| 087692300502 | SAMUELADAMSSEASONAL6/1... | | 1 | Side |
| 786150000014 | STELLAARTOIS6/11.2BTL | Core | 1 | Side |

Rite Aid
Store# 10551
MIDDLETOWN , NY

FINAL

COLD

FMB always lead flow in relation to store traffic flow.
 Open a support ticket if planogram flow shown is reversed from actual store traffic flow

Segment 1 of 2 starting view

Shelf Schematic Report

RITE AID_10551 Store # 10551 # of segments: 2

| UPC (12 Digit) | Name | Ast | HFaci... | Orientat... |
|----------------|---------------------------|--------|----------|-------------|
| 087692821021 | ANGRYORCHARDCRISPAPPL... | Core | 1 | Side |
| 754527008857 | NEWBELGIUMWOODOOJUICY... | PRO... | 1 | Side |
| 817606010209 | CAPTAINLAWRENCEIPA6/12BTL | Core | 1 | Side |
| 863267000059 | NEWBURGHMEGABOSS4/16C... | | 1 | Front |



← 1 ft 10 in ×

← 1 ft 10 in × →

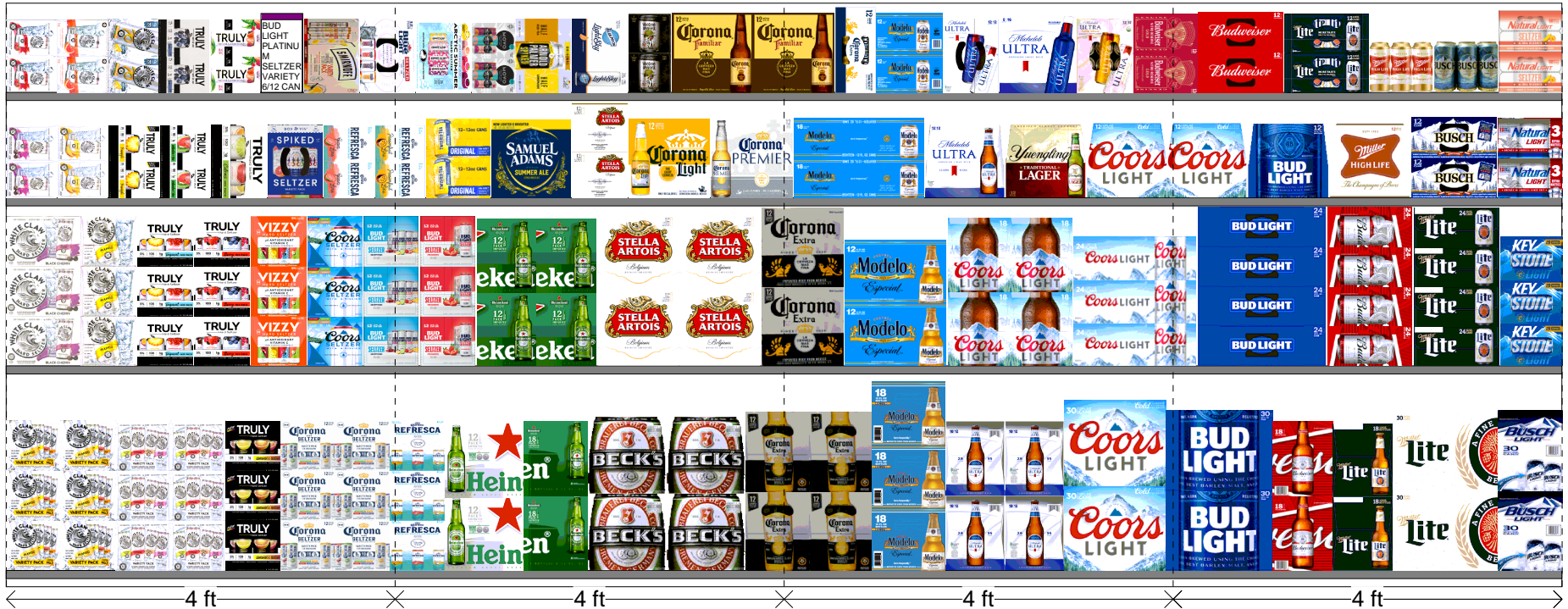
Rite Aid

Store# 10551

MIDDLETOWN , NY

Warm

FMB always lead flow in relation to store traffic flow.
Open a support ticket if planogram flow shown is reversed from actual store traffic flow



Rite Aid
Store# 10551
MIDDLETOWN , NY

FINAL

Warm

FMB always lead flow in relation to store traffic flow.
 Open a support ticket if planogram flow shown is reversed from actual store traffic flow

Segment 1 of 4 starting view

Shelf Schematic Report

RITE AID_10551 Store # 10551 # of segments: 4

| Name: 1_1 | | W:192.00 in | D:19.00 in | | |
|----------------|----------------------------|-------------|------------|-------------|--|
| UPC (12 Digit) | Name | Ast | HFaci... | Orientat... | |
| 635985800064 | WHITECLAWVARIETY12/12CA... | PRO... | 2 | Side | |
| 635985548904 | WHITECLAWVARIETY12/12CA... | Core | 2 | Side | |
| 087692009917 | TRULYLEMONADEVARIETY12/... | PRO... | 1 | Side | |
| 033544000434 | CORONASELTZERVARIETY12/... | PRO... | 2 | Side | |
| 033544000137 | CORONAVARIETYREFRESCA1... | Core | 1 | Side | |
| 072890001597 | HEINEKENLIGHT12/12BTL | Core | 1 | Front | |
| 072890001528 | HEINEKEN18/12BTL | PRO... | 1 | Side | |
| 082488123006 | BECKS12/12BTL | Core | 2 | Front | |

| Name: 1_2 | | W:192.00 in | D:19.00 in | | |
|----------------|-----------------------------|-------------|------------|-------------|--|
| UPC (12 Digit) | Name | Ast | HFaci... | Orientat... | |
| 635985260899 | WHITECLAWBLACKCHERRY12... | Core | 1 | Front | |
| 635985100331 | WHITECLAWMANGO12/12CAN | | 1 | Side | |
| 087692008040 | TRULYVARIETYTROPICAL12/1... | Core | 1 | Side | |
| 087692006862 | TRULYVARIETYBERRY12/12C... | Core | 1 | Side | |
| 034100012328 | VIZZYVARIETY12/12CAN(A) | PRO... | 1 | Side | |
| 071990000158 | COORSHARDSELTZERVARIET... | New | 1 | Side | |
| 018200202087 | BUDLIGHTSELTZERVARIETY1... | PRO... | 1 | Side | |
| 018200202179 | BUDLIGHTSELTZERVARIETYR... | | 1 | Side | |
| 072890000163 | HEINEKEN12/12BTL | Core | 2 | Side | |
| 786150000144 | STELLAARTOIS12/11.2BTL | Core | 2 | Front | |

| Name: 1_3 | | W:192.00 in | D:19.00 in | | |
|----------------|-----------------------------|-------------|------------|-------------|--|
| UPC (12 Digit) | Name | Ast | HFaci... | Orientat... | |
| 635985200253 | WHITECLAWBLACKCHERRY6/... | | 1 | Side 90 | |
| 635985260875 | WHITECLAWMANGO6/12CAN | | 1 | Side 90 | |
| 087692009658 | TRULYPINEAPPLE6/12CAN | PRO... | 1 | Side 90 | |
| 087692009894 | TRULYWATERMELONKIWI6/12... | PRO... | 1 | Side 90 | |
| 087692004240 | TRULYVARIETYCITRUS12/12C... | Core | 1 | Top 90 | |
| 853897002271 | BONANDVIVSPIKEDSELTZERV... | | 1 | Top 90 | |
| 033544950678 | CORONAREFRESCAGUAVALI... | | 1 | Side 90 | |
| 033544950630 | CORONAREFRESCAPASSION... | | 1 | Side 90 | |
| 087692831341 | TWISTEDTEAORIGINAL12/12C... | | 1 | Side 90 | |
| 087692011033 | SAMUELADAMSSEASONAL12/... | Core | 1 | Front | |
| 786150000168 | STELLAARTOIS12/11.2CAN | Core | 1 | Side | |
| 080660956756 | CORONALIGHT12/12BTL | Core | 1 | Front | |
| 033544950425 | CORONAPREMIER12/12BTL | Core | 1 | Front | |



Rite Aid
Store# 10551
MIDDLETOWN , NY

FINAL

Warm

FMB always lead flow in relation to store traffic flow.
 Open a support ticket if planogram flow shown is reversed from actual store traffic flow

Segment 1 of 4 starting view

Shelf Schematic Report

| UPC (12 Digit) | Name | Ast | HFaci... | Orientat... |
|----------------|-----------------------------|--------|----------|-------------|
| 635985260660 | WHITECLAWRASPBERRY6/12... | PRO... | 1 | Side 90 |
| 635985200284 | WHITECLAWRUBYGRAPEFRUI... | PRO... | 1 | Side 90 |
| 635985000211 | WHITECLAW70PINEAPPLE6/12... | PRO... | 1 | Side 90 |
| 087692007920 | TRULYBLUEBERRYANDACAI6/... | PRO... | 1 | Side 90 |
| 087692006787 | TRULYWILDBERRY6/12CAN | | 1 | Side 90 |
| 018200202506 | BUDLIGHTPLATINUMSELTZER... | | 1 | Side |
| 082000781424 | SMIRNOFFSPIKEDSPARKLING... | PRO... | 1 | Top 90 |
| 070310016633 | LABATTBLUELIGHTSELTZERV... | New | 1 | Top 90 |
| 041827701121 | ARCTICCHILLHARDSELTZERV... | PRO... | 1 | Top 90 |
| 034100012229 | MOVVARIETY4/8.4CAN | | 1 | Front 90 |
| 613008752200 | ARNOLDPALMERSPIKEDHALF... | New | 1 | Top 90 |
| 071990095925 | BLUEMOONLIGHTSKY12/12CAN | PRO... | 1 | Top 90 |
| 754527008857 | NEWBELGIUMVOODOOJUICY... | PRO... | 1 | Side |
| 033544950531 | CORONAFAMILIAR12/12BTL | Core | 2 | Front |



Rite Aid
Store# 10551
MIDDLETOWN , NY

FINAL

Warm

FMB always lead flow in relation to store traffic flow.
 Open a support ticket if planogram flow shown is reversed from actual store traffic flow

Segment 3 of 4 starting view

Shelf Schematic Report

RITE AID_10551 Store # 10551 # of segments: 4



| Name: 1_1 | | W:192.00 in | D:19.00 in | | |
|----------------|------------------------|-------------|------------|-------------|--|
| UPC (12 Digit) | Name | Ast | HFaci... | Orientat... | |
| 080660956152 | CORONA12/12BTL | Core | 2 | Side | |
| 033544950272 | MODELOESPECIAL18/12BTL | PRO... | 1 | Side | |
| 018200966248 | MICHELOBULTRA18/12BTL | Core | 2 | Side | |
| 071990300302 | COORSLIGHT30/12CAN | Core | 1 | Front | |
| 018200530302 | BUDLIGHT30/12CAN | Core | 1 | Front | |
| 018200113086 | BUD18/12BTL | | 1 | Side | |
| 034100572563 | LITE18/12BTL | | 1 | Side | |
| 034100573416 | LITE30/12CAN | | 1 | Front | |
| 018200860317 | BUSCHLIGHT30/12CAN | | 1 | Side | |

| Name: 1_2 | | W:192.00 in | D:19.00 in | | |
|----------------|------------------------|-------------|------------|-------------|--|
| UPC (12 Digit) | Name | Ast | HFaci... | Orientat... | |
| 080660956152 | CORONA12/12BTL | Core | 1 | Front | |
| 080660957579 | MODELOESPECIAL12/12BTL | Core | 1 | Front | |
| 071990300784 | COORSLIGHT18/12BTL | Core | 2 | Side | |
| 071990316006 | COORSLIGHT24/12CAN | Core | 1 | Top | |
| 018200531682 | BUDLIGHT24/12CAN | | 1 | Top | |
| 018200111686 | BUD24/12CAN | | 1 | Side 90 | |
| 034100573065 | LITE24/12CAN | | 1 | Side 90 | |
| 071990480455 | KEYSTONELIGHT15/12CAN | | 1 | Side 90 | |

| Name: 1_3 | | W:192.00 in | D:19.00 in | | |
|----------------|------------------------|-------------|------------|-------------|--|
| UPC (12 Digit) | Name | Ast | HFaci... | Orientat... | |
| 080660957111 | MODELOESPECIAL18/12CAN | Core | 1 | Top | |
| 018200059902 | MICHELOBULTRA12/12BTL | | 1 | Front | |
| 089924278962 | YUENGLINGLAGER12/12BTL | | 1 | Front | |
| 071990300692 | COORSLIGHT12/12BTL | | 2 | Front | |
| 018200007699 | BUDLIGHT12/12BTL | | 1 | Front | |
| 034100015091 | HIGHLIFE12/12BTL | Core | 1 | Front | |
| 018200610479 | BUSCH12/12CAN | | 1 | Top | |
| 018200200779 | NATURALLIGHT15/12CAN | | 1 | Side 90 | |

| Name: 2_2 | | W:192.00 in | D:19.00 in | | |
|----------------|--------------------------|-------------|------------|-------------|--|
| UPC (12 Digit) | Name | Ast | HFaci... | Orientat... | |
| 080660956954 | CORONA12/12CAN | Core | 1 | Top 90 | |
| 080660957159 | MODELOESPECIAL12/12CAN | Core | 1 | Side 90 | |
| 018200069918 | MICHELOBULTRA12/12CAN | New | 1 | Top 90 | |
| 018200200113 | MICHELOBULTRA8/16BTL(AL) | | 1 | Front | |

Rite Aid
Store# 10551
MIDDLETOWN , NY

FINAL

Warm

FMB always lead flow in relation to store traffic flow.
 Open a support ticket if planogram flow shown is reversed from actual store traffic flow

Segment 3 of 4 starting view

Shelf Schematic Report

| RITE AID_10551 | Store # 10551 | # of segments: 4 | | |
|----------------|----------------------------|------------------|---|---------|
| 018200201448 | MICHELOBULTRAPUREGOLD1... | PRO... | 1 | Top 90 |
| 018200202018 | BUDWEISERNITROGOLD12/12... | PRO... | 1 | Side 90 |
| 018200110474 | BUD12/12CAN | Core | 1 | Top |
| 034100576363 | LITE12/12CAN | | 1 | Top |
| 034100000073 | HIGHLIFE6/16CAN | | 1 | Front |
| 018200000638 | BUSCH6/16CAN | Core | 1 | Front |
| 018200201790 | NATURALLIGHTSELTZERVARI... | PRO... | 1 | Side 90 |

