

Rite Aid

Store# 597

POUGHKEEPSIE , NY

Cold

FMB always lead flow in relation to store traffic flow.
Open a support ticket if planogram flow shown is reversed from actual store traffic flow



Rite Aid
Store# 597
POUGHKEEPSIE , NY

FINAL Cold FMB always lead flow in relation to store traffic flow.
Open a support ticket if planogram flow shown is reversed from actual store traffic flow Segment 1 of 6 starting view



Shelf Schematic Report

RITE AID_597 Store # 597 # of segments: 6

Name: 1_1		W:22.00 in	D:22.00 in		
UPC (12 Digit)	Name	Ast	HFaci...	Orientat...	
635985200253	WHITECLAWBLACKCHERRY6/...		1	Side	
635985260875	WHITECLAWMANGO6/12CAN		1	Side	
635985548904	WHITECLAWVARIETY12/12CA...		1	Side 90	
635985260899	WHITECLAWBLACKCHERRY12...		1	Side 90	

Name: 1_2		W:22.00 in	D:22.00 in		
UPC (12 Digit)	Name	Ast	HFaci...	Orientat...	
635985100331	WHITECLAWMANGO12/12CAN		1	Front 90	
087692008040	TRULYVARIETYTROPICAL12/1...		1	Top 90	
087692006862	TRULYVARIETYBERRY12/12C...		1	Front 90	

Name: 1_3		W:22.00 in	D:22.00 in		
UPC (12 Digit)	Name	Ast	HFaci...	Orientat...	
635985800064	WHITECLAWVARIETY12/12CA...		1	Top 90	
087692009917	TRULYLEMONADEVARIETY12/...		1	Top 90	
087692004240	TRULYVARIETYCITRUS12/12C...		1	Front 90	

Name: 1_4		W:22.00 in	D:22.00 in		
UPC (12 Digit)	Name	Ast	HFaci...	Orientat...	
087692832317	TWISTEDTEAORIGINAL1/24CAN		1	Front	
635985245834	MIKESHARDERLEMONADE1/2...		1	Front	
070310014837	SEAGRAMSESCAPESSPIKEDJ...		1	Front	
635985260387	WHITECLAWBLACKCHERRY1/...		1	Side	
087692010425	TRULYLEMONADE1/24CAN		1	Front	
723830011922	LAGUNITASIPA1/19.2CAN		1	Front	
018200250019	BUDLIGHT1/25CAN		1	Front	

Name: 2_1		W:22.00 in	D:22.00 in		
UPC (12 Digit)	Name	Ast	HFaci...	Orientat...	
072890000163	HEINEKEN12/12BTL		3	Side	

Name: 2_2		W:22.00 in	D:22.00 in		
UPC (12 Digit)	Name	Ast	HFaci...	Orientat...	
018200202087	BUDLIGHTSELTZERVARIETY1...		1	Front 90	
072890000118	HEINEKEN6/12BTL		1	Side	
072890001597	HEINEKENLIGHT12/12BTL		1	Side	

Name: 2_3 W:22.00 in D:22.00 in

Rite Aid
Store# 597
POUGHKEEPSIE , NY

FINAL

Cold

FMB always lead flow in relation to store traffic flow.
 Open a support ticket if planogram flow shown is reversed from actual store traffic flow

Segment 1 of 6 starting view

Shelf Schematic Report

UPC (12 Digit)	Name	Ast	HFaci...	Orientat...
033544000434	CORONASELTZERVARIETY12/...		1	Top 90
034100012328	VIZZYVARIETY12/12CAN(A)		1	Top 90
071990000158	COORSHARDSELTZERVARIET...		1	Front 90

UPC (12 Digit)	Name	Ast	HFaci...	Orientat...
018200250002	BUD1/25CAN		1	Front
071990300654	COORSLIGHT1/24CAN		1	Front
071990100711	COORSBANQUET1/24CAN		1	Front
034100000059	HIGHLIFE1/24CAN		1	Front
071990480240	KEYSTONELIGHT1/24CAN		1	Front
018200250132	NATTYDADDY1/25CAN		1	Front
071439006017	ROLLINGROCK1/25CAN		1	Front



Rite Aid

Store# 597

POUGHKEEPSIE , NY

FINAL

Cold

FMB always lead flow in relation to store traffic flow.
Open a support ticket if planogram flow shown is reversed from actual store traffic flow

Segment 3 of 6 starting view



Shelf Schematic Report

RITE AID_597 Store # 597 # of segments: 6

Name: 3_1	W:22.00 in	D:22.00 in		
UPC (12 Digit)	Name	Ast	HFaci...	Orientat...
786150000144	STELLAARTOIS12/11.2BTL		1	Side
080660957159	MODELOESPECIAL12/12CAN		1	Side
080660956152	CORONA12/12BTL		1	Side

Name: 3_2	W:22.00 in	D:22.00 in		
UPC (12 Digit)	Name	Ast	HFaci...	Orientat...
786150000014	STELLAARTOIS6/11.2BTL		1	Side
082488123006	BECKS12/12BTL		1	Side
080660957579	MODELOESPECIAL12/12BTL		1	Side

Name: 3_3	W:22.00 in	D:22.00 in		
UPC (12 Digit)	Name	Ast	HFaci...	Orientat...
635985129981	MIKESHARDVARIETY12/11.2BTL		1	Side
071990095925	BLUEMOONLIGHTSKY12/12CAN		1	Front 90
071990095161	BLUEMOONBELGIANWHITE12/...		1	Side

Name: 3_4	W:22.00 in	D:22.00 in		
UPC (12 Digit)	Name	Ast	HFaci...	Orientat...
033544000137	CORONAVARIETYREFRESCA1...		1	Front 90
087692821021	ANGRYORCHARDCRISPAPPL...		1	Side
034100516055	LEINIESSEASONALPRIMARY6/...		1	Side
736920111327	GOOSEISLANDIPA6/12BTL		1	Side

Name: 4_1	W:22.00 in	D:22.00 in		
UPC (12 Digit)	Name	Ast	HFaci...	Orientat...
080660956152	CORONA12/12BTL		2	Side
018200967214	MICHELOBULTRA18/12CAN		1	Top 90

Name: 4_2	W:22.00 in	D:22.00 in		
UPC (12 Digit)	Name	Ast	HFaci...	Orientat...
080660956954	CORONA12/12CAN		1	Side
080660956152	CORONA12/12BTL		1	Side
080660956756	CORONALIGHT12/12BTL		1	Side

Name: 4_3	W:22.00 in	D:22.00 in		
UPC (12 Digit)	Name	Ast	HFaci...	Orientat...
087692011033	SAMUELADAMSSEASONAL12/...		1	Side
080660956053	CORONA6/12BTL		1	Side

Rite Aid
Store# 597
POUGHKEEPSIE , NY

FINAL

Cold

FMB always lead flow in relation to store traffic flow.
 Open a support ticket if planogram flow shown is reversed from actual store traffic flow

Segment 3 of 6 starting view

Shelf Schematic Report

RITE AID_597	Store # 597	# of segments: 6
033544950425	CORONAPREMIER12/12BTL	1 Side

UPC (12 Digit)	Name	Ast	HFaci...	Orientat...
736983582591	PEAKORGANICFRESHCUT6/12...		1	Side
754527008857	NEWBELGIUMVOODOOJUICY...		1	Side
033544950418	CORONAPREMIER6/12BTL		1	Side
033544950517	CORONAFAMILIAR6/12BTL		1	Side



Rite Aid

Store# 597

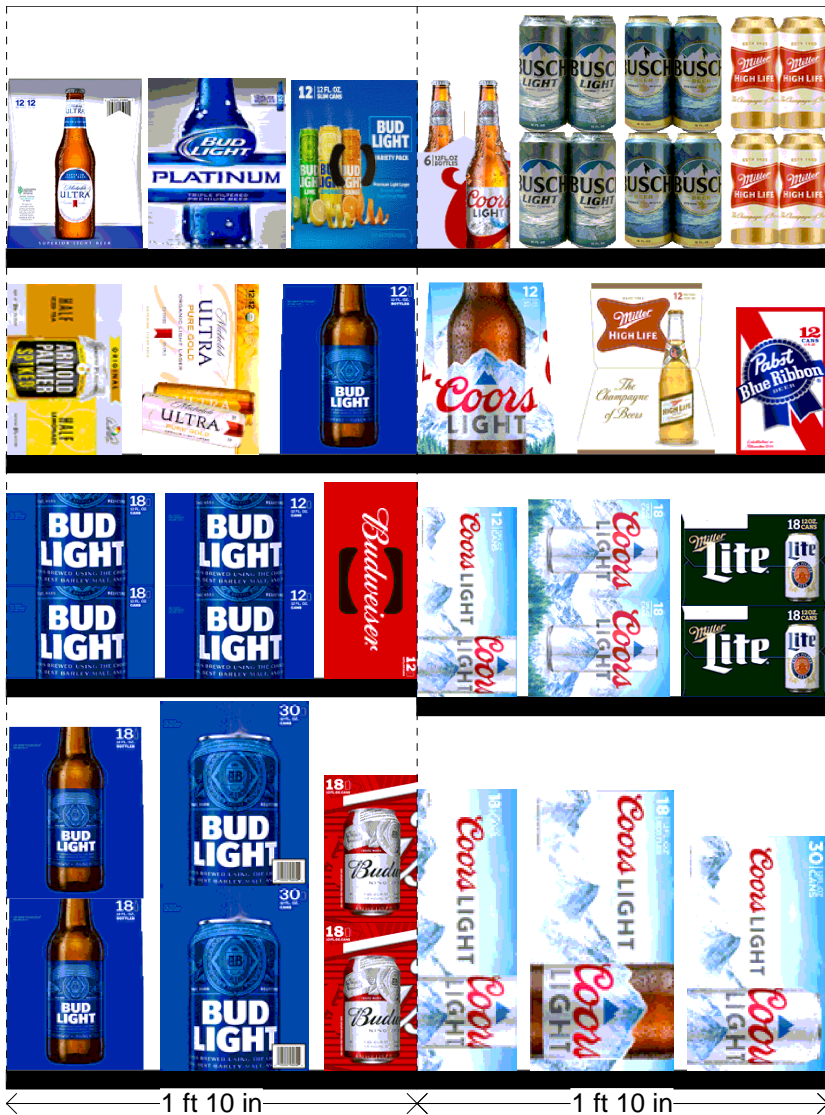
POUGHKEEPSIE , NY

FINAL

Cold

FMB always lead flow in relation to store traffic flow.
Open a support ticket if planogram flow shown is reversed from actual store traffic flow

Segment 5 of 6 starting view



Shelf Schematic Report

RITE AID_597 Store # 597 # of segments: 6

Name: 5_1	W:22.00 in	D:22.00 in		
UPC (12 Digit)	Name	Ast	HFaci...	Orientat...
018200533082	BUDLIGHT18/12BTL		1	Side
018200530302	BUDLIGHT30/12CAN		1	Side
018200112188	BUD18/12CAN		1	Side

Name: 5_2	W:22.00 in	D:22.00 in		
UPC (12 Digit)	Name	Ast	HFaci...	Orientat...
018200532184	BUDLIGHT18/12CAN		1	Side 90
018200530470	BUDLIGHT12/12CAN		1	Side 90
018200110474	BUD12/12CAN		1	Top 90

Name: 5_3	W:22.00 in	D:22.00 in		
UPC (12 Digit)	Name	Ast	HFaci...	Orientat...
613008752200	ARNOLDPALMERSPIKEDHALF...		1	Front 90
018200201448	MICHELOBULTRAPUREGOLD1...		1	Front 90
018200007699	BUDLIGHT12/12BTL		1	Side

Name: 5_4	W:22.00 in	D:22.00 in		
UPC (12 Digit)	Name	Ast	HFaci...	Orientat...
018200059902	MICHELOBULTRA12/12BTL		1	Side
018200189920	BUDLIGHTPLATINUM12/12BTL		1	Side
018200202100	BUDLIGHTPEELSVARIETY12/1...		1	Top 90

Name: 6_1	W:22.00 in	D:22.00 in		
UPC (12 Digit)	Name	Ast	HFaci...	Orientat...
071990300173	COORSLIGHT18/12CAN		1	Top 90
071990300784	COORSLIGHT18/12BTL		1	Top 90
071990300302	COORSLIGHT30/12CAN		1	Top 90

Name: 6_2	W:22.00 in	D:22.00 in		
UPC (12 Digit)	Name	Ast	HFaci...	Orientat...
071990000486	COORSLIGHT12/12CAN		1	Top 90
071990300173	COORSLIGHT18/12CAN		1	Side 90
034100573409	LITE18/12CAN		1	Side 90

Name: 6_3	W:22.00 in	D:22.00 in		
UPC (12 Digit)	Name	Ast	HFaci...	Orientat...
071990300692	COORSLIGHT12/12BTL		1	Side
034100015091	HIGHLIFE12/12BTL		1	Side

Rite Aid
Store# 597
POUGHKEEPSIE , NY

FINAL

Cold

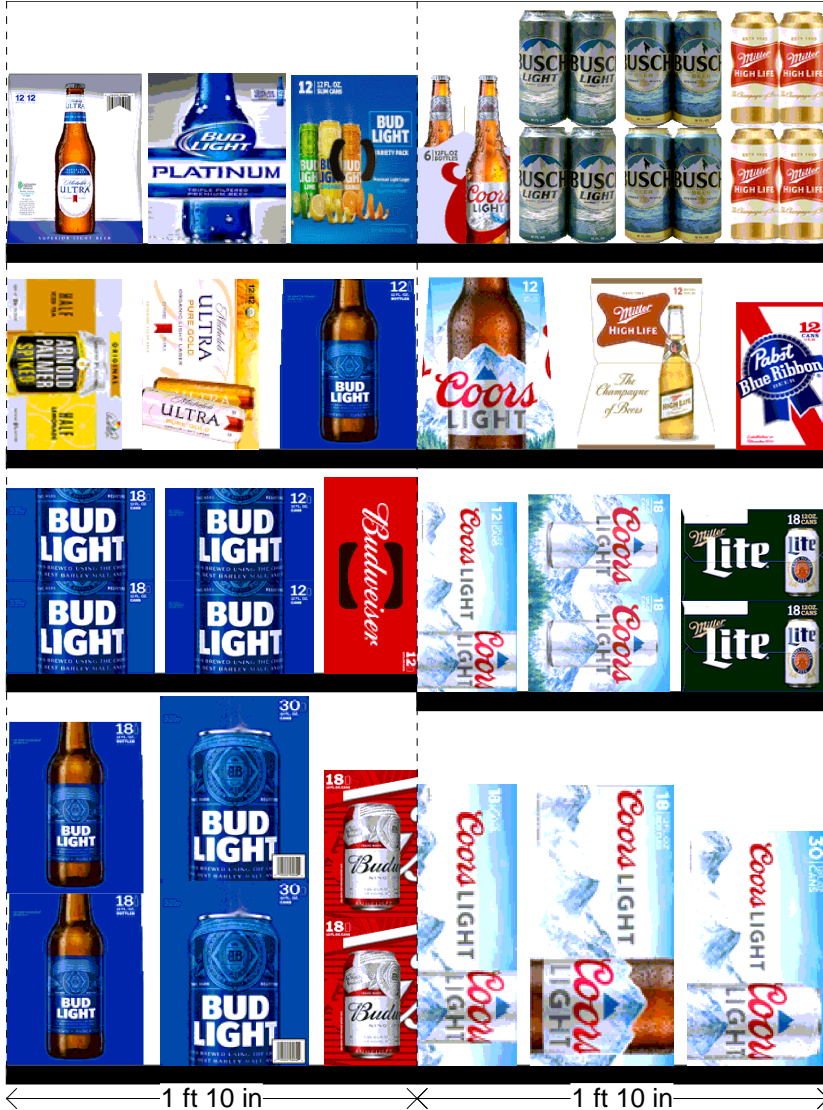
FMB always lead flow in relation to store traffic flow.
 Open a support ticket if planogram flow shown is reversed from actual store traffic flow

Segment 5 of 6 starting view

Shelf Schematic Report

RITE AID_597	Store # 597	# of segments: 6		
022100001701	PABST12/12CAN		1	Side

UPC (12 Digit)	Name	Ast	HFaci...	Orientat...
071990300050	COORSLIGHT6/12BTL		1	Side
018200004261	BUSCHLIGHT6/16CAN		1	Side
018200000638	BUSCH6/16CAN		1	Side
034100000073	HIGHLIFE6/16CAN		1	Side



Rite Aid

Store# 597

POUGHKEEPSIE , NY

Warm

FMB always lead flow in relation to store traffic flow.
Open a support ticket if planogram flow shown is reversed from actual store traffic flow



Rite Aid
Store# 597
POUGHKEEPSIE , NY

FINAL

Warm

FMB always lead flow in relation to store traffic flow.
 Open a support ticket if planogram flow shown is reversed from actual store traffic flow

Segment 1 of 4 starting view

Shelf Schematic Report

RITE AID_597 Store # 597 # of segments: 4

Name: 1_4		W:192.00 in	D:13.75 in		
UPC (12 Digit)	Name	Ast	HFaci...	Orientat...	
087692006862	TRULYVARIETYBERRY12/12C...		1	Side	90
087692004240	TRULYVARIETYCITRUS12/12C...		1	Side	90
087692008040	TRULYVARIETYTROPICAL12/1...		1	Side	90
635985260899	WHITECLAWBLACKCHERRY12...		3	Side	90
635985548904	WHITECLAWVARIETY12/12CA...		5	Side	90
080432802908	SEAGRAMSESCAPESVARIETY...		1	Side	
642860900245	FOUNDERSALLDAYSESSIONI...		1	Side	90

Name: 1_3		W:192.00 in	D:13.75 in		
UPC (12 Digit)	Name	Ast	HFaci...	Orientat...	
087692006787	TRULYWILDBERRY6/12CAN		1	Side	
087692007920	TRULYBLUEBERRYANDACAI6/...		1	Side	
087692009917	TRULYLEMONADEVARIETY12/...		1	Side	90
635985200284	WHITECLAWRUBYGRAPEFRUI...		1	Side	
635985200253	WHITECLAWBLACKCHERRY6/...		1	Side	
635985260875	WHITECLAWMANGO6/12CAN		1	Side	
635985100331	WHITECLAWMANGO12/12CAN		2	Side	90
635985800064	WHITECLAWVARIETY12/12CA...		1	Side	90
635985548904	WHITECLAWVARIETY12/12CA...		3	Side	90
087692000334	ANGRYORCHARDCRISPAPPL...		2	Side	
071990095161	BLUEMOONBELGIANWHITE12/...		1	Side	
087692100140	SAMUELADAMS BOSTON LAGE...		2	Side	

Name: 1_2		W:192.00 in	D:13.75 in		
UPC (12 Digit)	Name	Ast	HFaci...	Orientat...	
087692004172	TRULYCOLIMALIME6/12CAN		1	Side	90
087692007814	TRULYROSE6/12CAN		1	Side	90
635985000211	WHITECLAW70PINEAPPLE6/12...		1	Side	90
635985260660	WHITECLAWRASPBERRY6/12...		1	Side	90
635985025986	WHITECLAWNATURALLIME6/1...		1	Side	90
034100012328	VIZZYVARIETY12/12CAN(A)		2	Front	90
033544000434	CORONASELTZERVARIETY12/...		2	Front	90
018200202179	BUDLIGHTSELTZERVARIETYR...		1	Front	90
018200202087	BUDLIGHTSELTZERVARIETY1...		2	Front	90
071990000158	COORSHARDSELTZERVARIET...		2	Front	90
853897002271	BONANDVIVSPIKEDSELTZERV...		1	Front	90

Name: 1_1 W:192.00 in D:13.75 in



Rite Aid
Store# 597
POUGHKEEPSIE , NY

FINAL

Warm

FMB always lead flow in relation to store traffic flow.
 Open a support ticket if planogram flow shown is reversed from actual store traffic flow

Segment 1 of 4 starting view

Shelf Schematic Report

UPC (12 Digit)	Name	Ast	HFaci...	Orientat...
034100012229	MOVVARIETY4/8.4CAN		1	Front 90
018200202506	BUDLIGHTPLATINUMSELTZER...		1	Side
041827701121	ARCTICCHILLHARDSELTZERV...		1	Front 90
082000781424	SMIRNOFFSPIKEDSPARKLING...		1	Front 90
018200201790	NATURALLIGHTSELTZERVARI...		1	Top 90
018200285486	BONANDVIVSPIKEDSELTZERV...		1	Side
033544950678	CORONAREFRESCAGUAVALI...		1	Side
033544950630	CORONAREFRESCAPASSION...		1	Side
033544000137	CORONAVARIETYREFRESCA1...		1	Top 90
635985060741	MIKESHARDSEASONAL6/11.2...		1	Front
817606010209	CAPTAINLAWRENCEIPA6/12BTL		1	Front
071990095611	BLUEMOONMANGOWHEAT6/1...		1	Front
736920111327	GOOSEISLANDIPA6/12BTL		2	Front
083820123609	GUINNESSDRAUGHTSTOUT4/...		1	Front
786150000014	STELLAARTOIS6/11.2BTL		1	Front



Rite Aid
Store# 597
POUGHKEEPSIE , NY

FINAL Warm FMB always lead flow in relation to store traffic flow. Open a support ticket if planogram flow shown is reversed from actual store traffic flow Segment 3 of 4 starting view

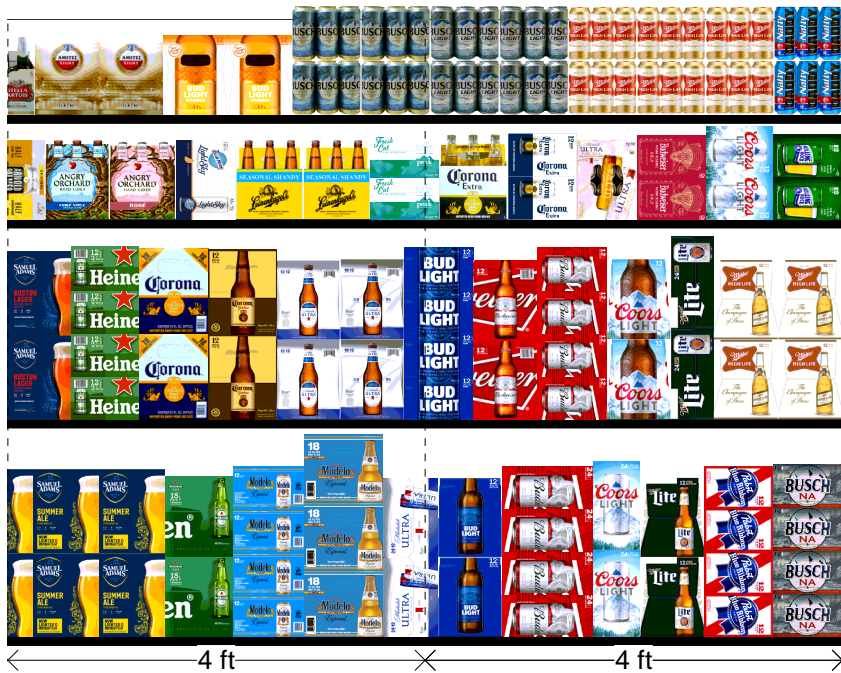
Shelf Schematic Report

RITE AID_597 Store # 597 # of segments: 4

Name: 1_4		W:192.00 in	D:13.75 in		
UPC (12 Digit)	Name	Ast	HFaci...	Orientat...	
087692011033	SAMUELADAMSSEASONAL12/...		4	Side	
072890001528	HEINEKEN18/12BTL		1	Side	
080660957159	MODELOESPECIAL12/12CAN		1	Side 90	
033544950272	MODELOESPECIAL18/12BTL		1	Side	
018200967153	MICHELOBULTRA24/12CAN		1	Side	
018200007699	BUDLIGHT12/12BTL		1	Side	
018200111686	BUD24/12CAN		1	Side 90	
071990316006	COORSLIGHT24/12CAN		1	Side	
034100575090	LITE12/12BTL		1	Side	
022100001701	PABST12/12CAN		1	Side 90	
018200006142	BUSCHNANEARBEER12/12CAN		1	Side 90	

Name: 1_3		W:192.00 in	D:13.75 in		
UPC (12 Digit)	Name	Ast	HFaci...	Orientat...	
072890000200	HEINEKEN12/12CAN		1	Side 90	
080660956800	CORONA18/12BTL		1	Side	
033544950531	CORONAFAMILIAR12/12BTL		1	Side	
018200059902	MICHELOBULTRA12/12BTL		1	Side	
018200966248	MICHELOBULTRA18/12BTL		1	Side	
018200530470	BUDLIGHT12/12CAN		1	Side 90	
018200007712	BUD12/12BTL		1	Side	
018200110474	BUD12/12CAN		1	Side 90	
071990300692	COORSLIGHT12/12BTL		1	Side	
034100573065	LITE24/12CAN		1	Side	
034100015091	HIGHLIFE12/12BTL		2	Side	

Name: 1_2		W:192.00 in	D:13.75 in		
UPC (12 Digit)	Name	Ast	HFaci...	Orientat...	
613008752200	ARNOLDPALMERSPIKEDHALF...		1	Front 90	
087692821021	ANGRYORCHARDCRISPAPPL...		1	Front	
087692006602	ANGRYORCHARDROSE6/12BTL		1	Front	
071990095925	BLUEMOONLIGHTSKY12/12CAN		1	Top 90	
034100516055	LEINIESESEASONALPRIMARY6/...		2	Front	
736983582591	PEAKORGANICFRESHCUT6/12...		1	Front	
080660956053	CORONA6/12BTL		1	Front	
080660956954	CORONA12/12CAN		1	Side 90	
018200201448	MICHELOBULTRAPUREGOLD1...		1	Top 90	
018200202018	BUDWEISERNITROGOLD12/12...		1	Side 90	



Rite Aid
Store# 597
POUGHKEEPSIE , NY

FINAL

Warm

FMB always lead flow in relation to store traffic flow.
 Open a support ticket if planogram flow shown is reversed from actual store traffic flow

Segment 3 of 4 starting view

Shelf Schematic Report

RITE AID_597	Store # 597	# of segments: 4		
071990000486	COORSLIGHT12/12CAN		1	Side 90
071439344508	ROLLINGROCK12/12CAN		1	Side 90

Name: 1_1	W:192.00 in	D:13.75 in		
UPC (12 Digit)	Name	Ast	HFaci...	Orientat...
072890100160	AMSTELLIGHT12/12BTL		2	Side
018200200809	BUDLIGHTORANGE12/12BTL		2	Side
018200000638	BUSCH6/16CAN		2	Front
018200004261	BUSCHLIGHT6/16CAN		2	Front
034100000073	HIGHLIFE6/16CAN		3	Front
018200258787	NATTYDADDY6/16CAN		1	Front

