

Rite Aid

Store# 10671

MIDDLE ISLAND , NY

Cold

FMB always lead flow in relation to store traffic flow.
Open a support ticket if planogram flow shown is reversed from actual store traffic flow



Rite Aid
Store# 10671
MIDDLE ISLAND , NY

FINAL

Cold

FMB always lead flow in relation to store traffic flow.
 Open a support ticket if planogram flow shown is reversed from actual store traffic flow

Segment 1 of 5 starting view

Shelf Schematic Report

RITE AID_10671 Store # 10671 # of segments: 5



| Name: 1_1 | | W:30.50 in | D:27.00 in | | |
|----------------|-----------------------------|------------|------------|-------------|----|
| UPC (12 Digit) | Name | Ast | HFaci... | Orientat... | |
| 635985548904 | WHITECLAWVARIETY12/12CA... | Core | 1 | Front | 90 |
| 635985800064 | WHITECLAWVARIETY12/12CA... | PRO... | 1 | Front | 90 |
| 087692008040 | TRULYVARIETYTROPICAL12/1... | | 1 | Front | 90 |
| 087692004240 | TRULYVARIETYCITRUS12/12C... | | 1 | Front | 90 |
| 072890000200 | HEINEKEN12/12CAN | Core | 1 | Side | |

| Name: 1_2 | | W:30.50 in | D:22.00 in | | |
|----------------|----------------------------|------------|------------|-------------|----|
| UPC (12 Digit) | Name | Ast | HFaci... | Orientat... | |
| 635985260875 | WHITECLAWMANGO6/12CAN | | 1 | Side | 90 |
| 087692006787 | TRULYWILDBERRY6/12CAN | | 1 | Side | 90 |
| 087692006862 | TRULYVARIETYBERRY12/12C... | Core | 1 | Front | 90 |
| 033544000434 | CORONASELTZERVARIETY12/... | PRO... | 1 | Front | 90 |

| Name: 1_3 | | W:30.50 in | D:22.00 in | | |
|----------------|----------------------------|------------|------------|-------------|----|
| UPC (12 Digit) | Name | Ast | HFaci... | Orientat... | |
| 635985200253 | WHITECLAWBLACKCHERRY6/... | | 1 | Side | 90 |
| 635985200284 | WHITECLAWRUBYGRAPEFRUI... | | 1 | Side | 90 |
| 087692009658 | TRULYPINEAPPLE6/12CAN | PRO... | 1 | Side | 90 |
| 087692009917 | TRULYLEMONADEVARIETY12/... | PRO... | 1 | Front | 90 |

| Name: 1_4 | | W:30.50 in | D:22.00 in | | |
|----------------|----------------------------|------------|------------|-------------|----|
| UPC (12 Digit) | Name | Ast | HFaci... | Orientat... | |
| 018200202506 | BUDLIGHTPLATINUMSELTZER... | New | 1 | Side | |
| 034100012328 | VIZZYVARIETY12/12CAN(A) | PRO... | 1 | Side | 90 |
| 071990000158 | COORSHARDSELTZERVARIET... | New | 1 | Side | 90 |
| 018200202087 | BUDLIGHTSELTZERVARIETY1... | PRO... | 1 | Side | 90 |
| 018200202179 | BUDLIGHTSELTZERVARIETYR... | New | 1 | Side | 90 |

| Name: 1_5 | | W:30.50 in | D:12.00 in | | |
|----------------|---------------------------|------------|------------|-------------|----|
| UPC (12 Digit) | Name | Ast | HFaci... | Orientat... | |
| 087692006602 | ANGRYORCHARDROSE6/12BTL | | 1 | Front | |
| 034100012229 | MOVOVARIETY4/8.4CAN | | 2 | Front | |
| 033544000137 | CORONAVARIETYREFRESCA1... | | 1 | Top | 90 |
| 613008748333 | ARNOLDPALMERSPIKEDHALF... | | 1 | Front | |

| Name: 2_1 | | W:30.50 in | D:27.00 in | | |
|----------------|------------------|------------|------------|-------------|--|
| UPC (12 Digit) | Name | Ast | HFaci... | Orientat... | |
| 072890001528 | HEINEKEN18/12BTL | New | 1 | Side | |

Rite Aid
Store# 10671
MIDDLE ISLAND , NY

FINAL

Cold

FMB always lead flow in relation to store traffic flow.
 Open a support ticket if planogram flow shown is reversed from actual store traffic flow

Segment 1 of 5 starting view

Shelf Schematic Report

RITE AID_10671 Store # 10671 # of segments: 5

| | | | | |
|--------------|------------------|------|---|------|
| 07289000163 | HEINEKEN12/12BTL | Core | 1 | Side |
| 082488123006 | BECKS12/12BTL | Core | 2 | Side |

| Name: 2_2 | | W:30.50 in | D:22.00 in | |
|----------------|------------------------|------------|------------|-------------|
| UPC (12 Digit) | Name | Ast | HFaci... | Orientat... |
| 07289000118 | HEINEKEN6/12BTL | Core | 1 | Side |
| 072890001597 | HEINEKENLIGHT12/12BTL | Core | 1 | Side |
| 786150000168 | STELLAARTOIS12/11.2CAN | Core | 1 | Front 90 |
| 786150000144 | STELLAARTOIS12/11.2BTL | Core | 1 | Side |
| 786150000014 | STELLAARTOIS6/11.2BTL | Core | 1 | Side |

| Name: 2_3 | | W:30.50 in | D:22.00 in | |
|----------------|----------------------------|------------|------------|-------------|
| UPC (12 Digit) | Name | Ast | HFaci... | Orientat... |
| 071990095161 | BLUEMOONBELGIANWHITE12/... | Core | 1 | Side |
| 181954000022 | PERONI6/11.2BTL | | 1 | Front |
| 181954000046 | PERONI12/11.2BTL | | 1 | Side |
| 082488123815 | BECKS12/12CAN | | 1 | Top 90 |

| Name: 2_4 | | W:30.50 in | D:22.00 in | |
|----------------|----------------------------|------------|------------|-------------|
| UPC (12 Digit) | Name | Ast | HFaci... | Orientat... |
| 071990095116 | BLUEMOONBELGIANWHITE6/1... | | 1 | Side |
| 071990095925 | BLUEMOONLIGHTSKY12/12CAN | PRO... | 1 | Top 90 |
| 041827000767 | HARPOONIPA6/12BTL | | 1 | Side |
| 030613000746 | BROOKLYNVARIETY12/12CAN | PRO... | 1 | Side |
| 087692100140 | SAMUELADAMS BOSTON LAGE... | | 1 | Side |

| Name: 2_5 | | W:30.50 in | D:12.00 in | |
|----------------|----------------------------|------------|------------|-------------|
| UPC (12 Digit) | Name | Ast | HFaci... | Orientat... |
| 635985060741 | MIKESHARDSEASONAL6/11.2... | | 1 | Front |
| 862737000063 | MONTAUKSUMMER6/12CAN(W... | | 1 | Side |
| 869071000278 | MONTAUKWAVECHASER4/6/1... | | 1 | Side |
| 030613000302 | BROOKLYNLAGER6/12CAN | | 1 | Side |
| 859093002466 | SIXPOINTRESINIIPA6/12CAN | | 1 | Side |



Rite Aid
Store# 10671
MIDDLE ISLAND, NY

FINAL

Cold

FMB always lead flow in relation to store traffic flow.
 Open a support ticket if planogram flow shown is reversed from actual store traffic flow

Segment 3 of 5 starting view

Shelf Schematic Report

RITE AID_10671 Store # 10671 # of segments: 5



| Name: 3_1 | W:30.50 in | D:27.00 in | | | |
|----------------|------------------------|------------|----------|-------------|--|
| UPC (12 Digit) | Name | Ast | HFaci... | Orientat... | |
| 080660956800 | CORONA18/12BTL | Core | 1 | Side | |
| 080660956152 | CORONA12/12BTL | Core | 1 | Front | |
| 080660957579 | MODELOESPECIAL12/12BTL | Core | 1 | Side | |

| Name: 3_2 | W:30.50 in | D:22.00 in | | | |
|----------------|------------------------|------------|----------|-------------|--|
| UPC (12 Digit) | Name | Ast | HFaci... | Orientat... | |
| 033544950425 | CORONAPREMIER12/12BTL | Core | 1 | Side | |
| 080660954080 | CORONA24/7BTL | Core | 1 | Front | |
| 080660957159 | MODELOESPECIAL12/12CAN | Core | 1 | Side 90 | |

| Name: 3_3 | W:30.50 in | D:22.00 in | | | |
|----------------|------------------------|------------|----------|-------------|--|
| UPC (12 Digit) | Name | Ast | HFaci... | Orientat... | |
| 080660956954 | CORONA12/12CAN | Core | 1 | Top 90 | |
| 080660956053 | CORONA6/12BTL | Core | 1 | Side | |
| 033544950272 | MODELOESPECIAL18/12BTL | Core | 1 | Front | |

| Name: 3_4 | W:30.50 in | D:22.00 in | | | |
|----------------|------------------------|------------|----------|-------------|--|
| UPC (12 Digit) | Name | Ast | HFaci... | Orientat... | |
| 080660956756 | CORONALIGHT12/12BTL | Core | 1 | Side | |
| 080660957111 | MODELOESPECIAL18/12CAN | Core | 1 | Side 90 | |
| 033544000212 | MODELOESPECIAL24/7BTL | PRO... | 1 | Front | |

| Name: 3_5 | W:30.50 in | D:12.00 in | | | |
|----------------|-----------------------------|------------|----------|-------------|--|
| UPC (12 Digit) | Name | Ast | HFaci... | Orientat... | |
| 681745111024 | BLUEPOINTHOPTICALILLUSIO... | | 1 | Front | |
| 754527009946 | NEWBELGIUMWOODOOROTAT... | | 1 | Side | |
| 083820123937 | GUINNESSEXTRASTOUT6/12B... | Core | 2 | Front | |

| Name: 4_1 | W:30.50 in | D:27.00 in | | | |
|----------------|------------------|------------|----------|-------------|--|
| UPC (12 Digit) | Name | Ast | HFaci... | Orientat... | |
| 018200533082 | BUDLIGHT18/12BTL | | 1 | Side | |
| 018200532184 | BUDLIGHT18/12CAN | Core | 1 | Side 90 | |
| 018200113086 | BUD18/12BTL | | 1 | Side | |
| 018200112188 | BUD18/12CAN | Core | 1 | Side | |

| Name: 4_2 | W:30.50 in | D:22.00 in | | | |
|----------------|-----------------------|------------|----------|-------------|--|
| UPC (12 Digit) | Name | Ast | HFaci... | Orientat... | |
| 018200967214 | MICHELOBULTRA18/12CAN | | 1 | Side 90 | |

Rite Aid
Store# 10671
MIDDLE ISLAND , NY

FINAL

Cold

FMB always lead flow in relation to store traffic flow.
 Open a support ticket if planogram flow shown is reversed from actual store traffic flow

Segment 3 of 5 starting view

Shelf Schematic Report

| RITE AID_10671 Store # 10671 # of segments: 5 | | | | |
|---|-----------------------|------|---|---------|
| 018200059902 | MICHELOBULTRA12/12BTL | | 1 | Side |
| 018200533082 | BUDLIGHT18/12BTL | | 1 | Side |
| 018200112188 | BUD18/12CAN | Core | 1 | Side 90 |

| Name: 4 3 W:30.50 in D:22.00 in | | | | |
|---------------------------------|---------------------------|--------|----------|-------------|
| UPC (12 Digit) | Name | Ast | HFaci... | Orientat... |
| 018200201448 | MICHELOBULTRAPUREGOLD1... | PRO... | 1 | Top 90 |
| 018200089893 | BUDLIGHT8/16CAN | | 1 | Side |
| 018200530470 | BUDLIGHT12/12CAN | Core | 1 | Side 90 |
| 018200110474 | BUD12/12CAN | Core | 1 | Side 90 |

| Name: 4 4 W:30.50 in D:22.00 in | | | | |
|---------------------------------|-----------------------------|--------|----------|-------------|
| UPC (12 Digit) | Name | Ast | HFaci... | Orientat... |
| 018200169847 | MICHELOBULTRALIMEACTU... | PRO... | 1 | Top 90 |
| 018200202100 | BUDLIGHTPEELSVARIETY12/1... | PRO... | 1 | Top 90 |
| 018200007699 | BUDLIGHT12/12BTL | | 1 | Side |
| 018200089817 | BUD8/16CAN | | 1 | Top 90 |

| Name: 4 5 W:30.50 in D:12.00 in | | | | |
|---------------------------------|----------------------------|--------|----------|-------------|
| UPC (12 Digit) | Name | Ast | HFaci... | Orientat... |
| 089826900336 | TECATE12/12CAN | | 1 | Side 90 |
| 613008752200 | ARNOLDPALMERSPIKEDHALF... | New | 2 | Front 90 |
| 018200202018 | BUDWEISERNITROGOLD12/12... | PRO... | 1 | Side 90 |



Rite Aid
Store# 10671
MIDDLE ISLAND , NY

FINAL

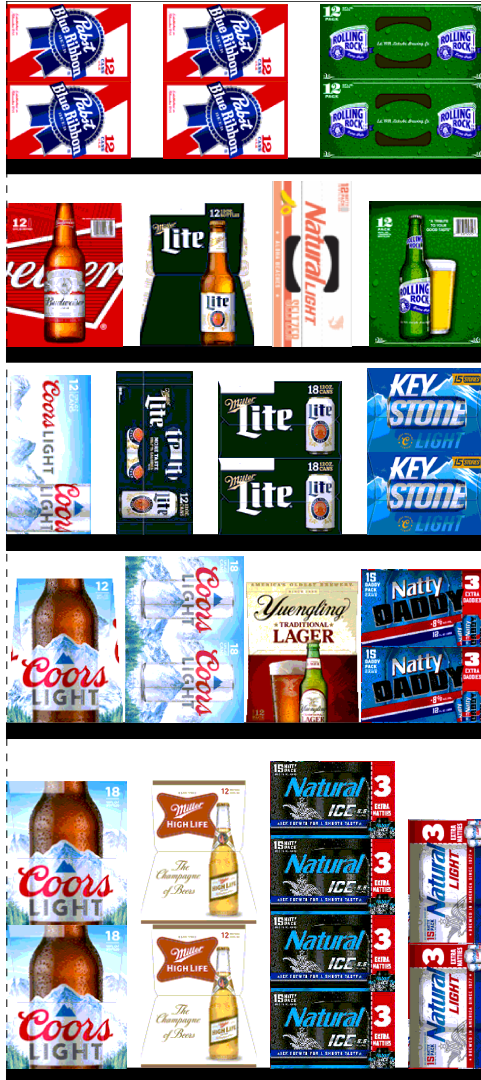
Cold

FMB always lead flow in relation to store traffic flow.
 Open a support ticket if planogram flow shown is reversed from actual store traffic flow

Segment 5 of 5 starting view

Shelf Schematic Report

RITE AID_10671 Store # 10671 # of segments: 5



← 2 ft 6.5 in →

| Name: 5_1 | | W:30.50 in | D:27.00 in | | |
|----------------|----------------------|------------|------------|-------------|--|
| UPC (12 Digit) | Name | Ast | HFaci... | Orientat... | |
| 071990300784 | COORSLIGHT18/12BTL | Core | 1 | Side | |
| 034100015091 | HIGHLIFE12/12BTL | Core | 1 | Side | |
| 018200284434 | NATURALICE15/12CAN | Core | 1 | Side 90 | |
| 018200200779 | NATURALLIGHT15/12CAN | Core | 1 | Side | |

| Name: 5_2 | | W:30.50 in | D:22.00 in | | |
|----------------|------------------------|------------|------------|-------------|--|
| UPC (12 Digit) | Name | Ast | HFaci... | Orientat... | |
| 071990300692 | COORSLIGHT12/12BTL | Core | 1 | Side | |
| 071990300173 | COORSLIGHT18/12CAN | Core | 1 | Side 90 | |
| 089924278962 | YUENGLINGLAGER12/12BTL | | 1 | Side | |
| 018200200786 | NATTYDADDY15/12CAN | | 1 | Side 90 | |

| Name: 5_3 | | W:30.50 in | D:22.00 in | | |
|----------------|-----------------------|------------|------------|-------------|--|
| UPC (12 Digit) | Name | Ast | HFaci... | Orientat... | |
| 071990000486 | COORSLIGHT12/12CAN | New | 1 | Top 90 | |
| 034100576363 | LITE12/12CAN | | 1 | Top 90 | |
| 034100573409 | LITE18/12CAN | Core | 1 | Side 90 | |
| 071990480455 | KEYSTONELIGHT15/12CAN | | 1 | Side 90 | |

| Name: 5_4 | | W:30.50 in | D:22.00 in | | |
|----------------|----------------------------|------------|------------|-------------|--|
| UPC (12 Digit) | Name | Ast | HFaci... | Orientat... | |
| 018200007712 | BUD12/12BTL | | 1 | Side | |
| 034100575090 | LITE12/12BTL | | 1 | Side | |
| 018200201790 | NATURALLIGHTSELTZERVARI... | PRO... | 1 | Top 90 | |
| 071439457123 | ROLLINGROCK12/12BTL | | 1 | Side | |

| Name: 5_5 | | W:30.50 in | D:12.00 in | | |
|----------------|---------------------|------------|------------|-------------|--|
| UPC (12 Digit) | Name | Ast | HFaci... | Orientat... | |
| 022100001701 | PABST12/12CAN | | 2 | Side 90 | |
| 071439344508 | ROLLINGROCK12/12CAN | | 1 | Top | |

Rite Aid

Store# 10671

MIDDLE ISLAND, NY

Warm

FMB always lead flow in relation to store traffic flow.
 Open a support ticket if planogram flow shown is reversed from actual store traffic flow



Rite Aid
Store# 10671
MIDDLE ISLAND, NY

FINAL

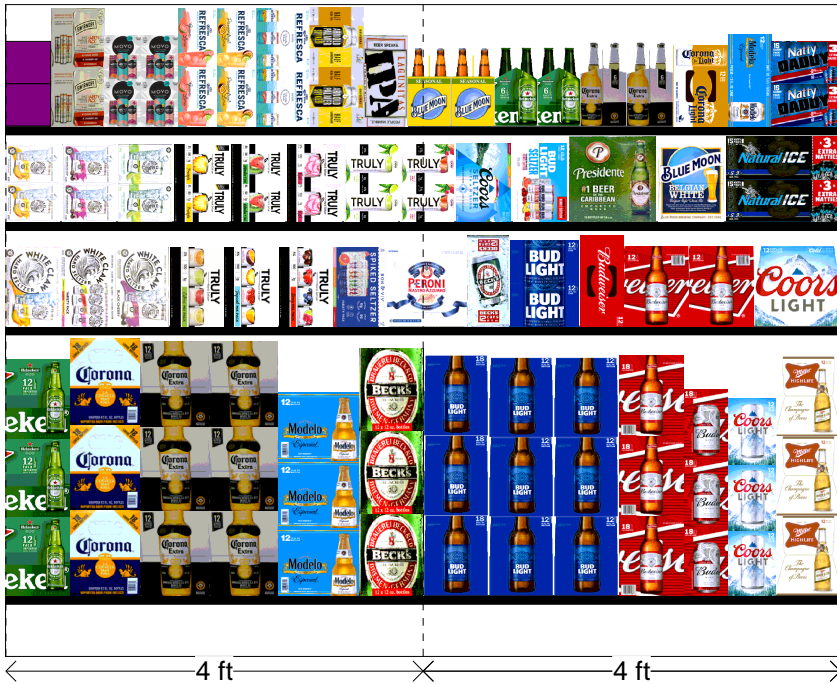
Warm

FMB always lead flow in relation to store traffic flow.
 Open a support ticket if planogram flow shown is reversed from actual store traffic flow

Segment 1 of 2 starting view

Shelf Schematic Report

RITE AID_10671 Store # 10671 # of segments: 2



| Name: 1_1 | | W:96.00 in | D:16.00 in | | |
|----------------|------------------------|------------|------------|-------------|--|
| UPC (12 Digit) | Name | Ast | HFaci... | Orientat... | |
| 07289000163 | HEINEKEN12/12BTL | Core | 1 | Side | |
| 080660956800 | CORONA18/12BTL | Core | 1 | Side | |
| 080660956152 | CORONA12/12BTL | Core | 2 | Side | |
| 080660957579 | MODELOESPECIAL12/12BTL | Core | 1 | Side | |
| 082488123006 | BECKS12/12BTL | Core | 1 | Side | |
| 018200533082 | BUDLIGHT18/12BTL | | 1 | Side | |
| 018200007699 | BUDLIGHT12/12BTL | | 2 | Side | |
| 018200113086 | BUD18/12BTL | | 1 | Side | |
| 018200112188 | BUD18/12CAN | Core | 1 | Side | |
| 071990000486 | COORSLIGHT12/12CAN | New | 1 | Side | |
| 034100015091 | HIGHLIFE12/12BTL | Core | 1 | Side | |

| Name: 1_2 | | W:96.00 in | D:16.00 in | | |
|----------------|-----------------------------|------------|------------|-------------|--|
| UPC (12 Digit) | Name | Ast | HFaci... | Orientat... | |
| 635985100331 | WHITECLAWMANGO12/12CAN | | 1 | Front 90 | |
| 635985548904 | WHITECLAWVARIETY12/12CA... | Core | 1 | Front 90 | |
| 635985260899 | WHITECLAWBLACKCHERRY12... | | 1 | Front 90 | |
| 087692004240 | TRULYVARIETYCITRUS12/12C... | | 1 | Front 90 | |
| 087692008040 | TRULYVARIETYTROPICAL12/1... | | 1 | Front 90 | |
| 087692006862 | TRULYVARIETYBERRY12/12C... | Core | 1 | Front 90 | |
| 853897002271 | BONANDVIVSPIKEDSELTZERV... | Move | 1 | Front 90 | |
| 181954000046 | PERONI12/11.2BTL | | 1 | Front | |
| 082488123815 | BECKS12/12CAN | | 1 | Top 90 | |
| 018200530470 | BUDLIGHT12/12CAN | Core | 1 | Side 90 | |
| 018200110474 | BUD12/12CAN | Core | 1 | Top 90 | |
| 018200007712 | BUD12/12BTL | | 2 | Side | |
| 071990300692 | COORSLIGHT12/12BTL | Core | 1 | Front | |

| Name: 1_3 | | W:96.00 in | D:16.00 in | | |
|----------------|----------------------------|------------|------------|-------------|--|
| UPC (12 Digit) | Name | Ast | HFaci... | Orientat... | |
| 635985260875 | WHITECLAWMANGO6/12CAN | | 1 | Side 90 | |
| 635985200253 | WHITECLAWBLACKCHERRY6/... | | 1 | Side 90 | |
| 635985025986 | WHITECLAWNATURALLIME6/1... | | 1 | Side 90 | |
| 087692009658 | TRULYPINEAPPLE6/12CAN | PRO... | 1 | Side 90 | |
| 087692009894 | TRULYWATERMELONKIWI6/12... | PRO... | 1 | Side 90 | |
| 087692007814 | TRULYROSE6/12CAN | | 1 | Side 90 | |
| 087692004172 | TRULYCOLIMALIME6/12CAN | | 1 | Side 90 | |
| 087692006787 | TRULYWILDBERRY6/12CAN | | 1 | Side 90 | |

Rite Aid
Store# 10671
MIDDLE ISLAND , NY

FINAL

Warm

FMB always lead flow in relation to store traffic flow.
 Open a support ticket if planogram flow shown is reversed from actual store traffic flow

Segment 1 of 2 starting view

Shelf Schematic Report

| RITE AID_10671 Store # 10671 | | # of segments: 2 | |
|------------------------------|----------------------------|------------------|------------|
| 071990000158 | COORSHARDSELTZERVARIET... | New | 1 Front 90 |
| 018200202179 | BUDLIGHTSELTZERVARIETYR... | New | 1 Front 90 |
| 719057001563 | PRESIDENTE12/12BTL | | 1 Front |
| 071990095161 | BLUEMOONBELGIANWHITE12/... | Core | 1 Side |
| 018200284434 | NATURALICE15/12CAN | Core | 1 Top |

| Name: 1_4 | | W:96.00 in | | D:16.00 in | |
|----------------|----------------------------|------------|----------|-------------|--|
| UPC (12 Digit) | Name | Ast | HFaci... | Orientat... | |
| 018200202506 | BUDLIGHTPLATINUMSELTZER... | New | 1 | Side | |
| 082000781424 | SMIRNOFFSPIKEDSPARKLING... | | 1 | Side 90 | |
| 034100012229 | MOVOVARIETY4/8.4CAN | | 2 | Front | |
| 033544950678 | CORONAREFRESCAGUAVALI... | | 1 | Top 90 | |
| 033544950630 | CORONAREFRESCAPASSION... | | 1 | Top 90 | |
| 033544000137 | CORONAVARIETYREFRESCA1... | | 1 | Side 90 | |
| 613008752200 | ARNOLDPALMERSPIKEDHALF... | New | 1 | Side 90 | |
| 723830212121 | LAGUNITASIPA12/12CAN | | 1 | Top 90 | |
| 071990095321 | BLUEMOONSEASONAL6/12BTL | | 2 | Side | |
| 072890000118 | HEINEKEN6/12BTL | Core | 2 | Side | |
| 080660956053 | CORONA6/12BTL | Core | 2 | Side | |
| 080660956213 | CORONALIGHT12/12CAN | | 1 | Top 90 | |
| 080660957159 | MODELOESPECIAL12/12CAN | Core | 1 | Top 90 | |
| 018200200786 | NATTYDADDY15/12CAN | | 1 | Side 90 | |

