

Rite Aid

Store# 10641

HUNTINGTON STATION , NY

Cold

FMB always lead flow in relation to store traffic flow.
Open a support ticket if planogram flow shown is reversed from actual store traffic flow



Rite Aid
Store# 10641
HUNTINGTON STATION , NY

FINAL

Cold

FMB always lead flow in relation to store traffic flow.
 Open a support ticket if planogram flow shown is reversed from actual store traffic flow

Segment 1 of 6 starting view

Shelf Schematic Report

RITE AID_10641 Store # 10641		# of segments: 6	
082488123815	BECKS12/12CAN	1	Side
181954000046	PERONI12/11.2BTL	1	Side

Name: 2_3		W:30.50 in	D:22.00 in
UPC (12 Digit)	Name	Ast	HFaci... Orientat...
786150001493	STELLAARTOIS18/11.2BTL		1 Side
78615000168	STELLAARTOIS12/11.2CAN	Core	1 Front 90
78615000014	STELLAARTOIS6/11.2BTL	Core	1 Side
181954000022	PERONI6/11.2BTL		1 Side
4005249004181	VELTINSPILSENER4/16.9CAN		1 Side

Name: 2_4		W:30.50 in	D:22.00 in
UPC (12 Digit)	Name	Ast	HFaci... Orientat...
018200202506	BUDLIGHTPLATINUMSELTZER...	New	1 Side
071990095925	BLUEMOONLIGHTSKY12/12CAN	PRO...	1 Top 90
071990095321	BLUEMOONSEASONAL6/12BTL		1 Side
071990095116	BLUEMOONBELGIANWHITE6/1...		1 Side
071990095161	BLUEMOONBELGIANWHITE12/...	Core	1 Side

Name: 2_1		W:30.50 in	D:12.00 in
UPC (12 Digit)	Name	Ast	HFaci... Orientat...
087692006602	ANGRYORCHARDROSE6/12BTL		1 Front
894137002712	CRISPINROSE6/12CAN		1 Front
635985100621	MIKESHARDLEMONADE6/11.2...		1 Front
635985067443	MIKESHARDBLACKCHERRYLE...		1 Front



Rite Aid
Store# 10641
HUNTINGTON STATION , NY

FINAL

Cold

FMB always lead flow in relation to store traffic flow.
 Open a support ticket if planogram flow shown is reversed from actual store traffic flow

Segment 3 of 6 starting view

Shelf Schematic Report

RITE AID_10641 Store # 10641 # of segments: 6



Name: 3_1		W:30.50 in	D:22.00 in		
UPC (12 Digit)	Name	Ast	HFaci...	Orientat...	
080660954080	CORONA24/7BTL	Core	1	Side	
080660956800	CORONA18/12BTL	Core	1	Side	
080660956152	CORONA12/12BTL	Core	1	Front	

Name: 3_2		W:30.50 in	D:22.00 in		
UPC (12 Digit)	Name	Ast	HFaci...	Orientat...	
681745002513	BLUEPOINTPINSTRIPEPILS6/1...	PRO...	1	Side	
859989005229	GREENPORTHARBORSEASON...		1	Side	
638489000299	DOGFISHHEAD60MINUTEIPA6/...		1	Side	
080660956152	CORONA12/12BTL	Core	1	Side	
080660956954	CORONA12/12CAN	Core	1	Top 90	

Name: 3_3		W:30.50 in	D:22.00 in		
UPC (12 Digit)	Name	Ast	HFaci...	Orientat...	
030613000746	BROOKLYNVARIETY12/12CAN	New	1	Side 90	
723830000209	LAGUNITASLITTLESUMPIN6/1...		1	Side	
630279465066	VICTORYGOLDENMONKEY6/1...		1	Side	
034100516055	LEINIESSEASONALPRIMARY6/...		1	Side	
042572040060	SCHOFFERHOFERGRAPEFRU...		1	Side	

Name: 3_4		W:30.50 in	D:12.00 in		
UPC (12 Digit)	Name	Ast	HFaci...	Orientat...	
754527009946	NEWBELGIUMWOODOOROTAT...		1	Front	
859093002466	SIXPOINTRESINIIPA6/12CAN		1	Side	
869071000261	MONTAUKWATERMELLOW6/1...		1	Side	
869071000278	MONTAUKWAVECHASER4/6/1...		1	Side	
862737000063	MONTAUKSUMMER6/12CAN(W...		1	Side	

Name: 4_1		W:30.50 in	D:22.00 in		
UPC (12 Digit)	Name	Ast	HFaci...	Orientat...	
080660956756	CORONALIGHT12/12BTL	Core	1	Side	
033544000182	CORONAPREMIER18/12BTL		1	Side	
080660957579	MODELOESPECIAL12/12BTL	Core	1	Front	

Name: 4_2		W:30.50 in	D:22.00 in		
UPC (12 Digit)	Name	Ast	HFaci...	Orientat...	
080660956053	CORONA6/12BTL	Core	1	Front	
033544950425	CORONAPREMIER12/12BTL	Core	1	Side	

Rite Aid
Store# 10641
HUNTINGTON STATION , NY

FINAL

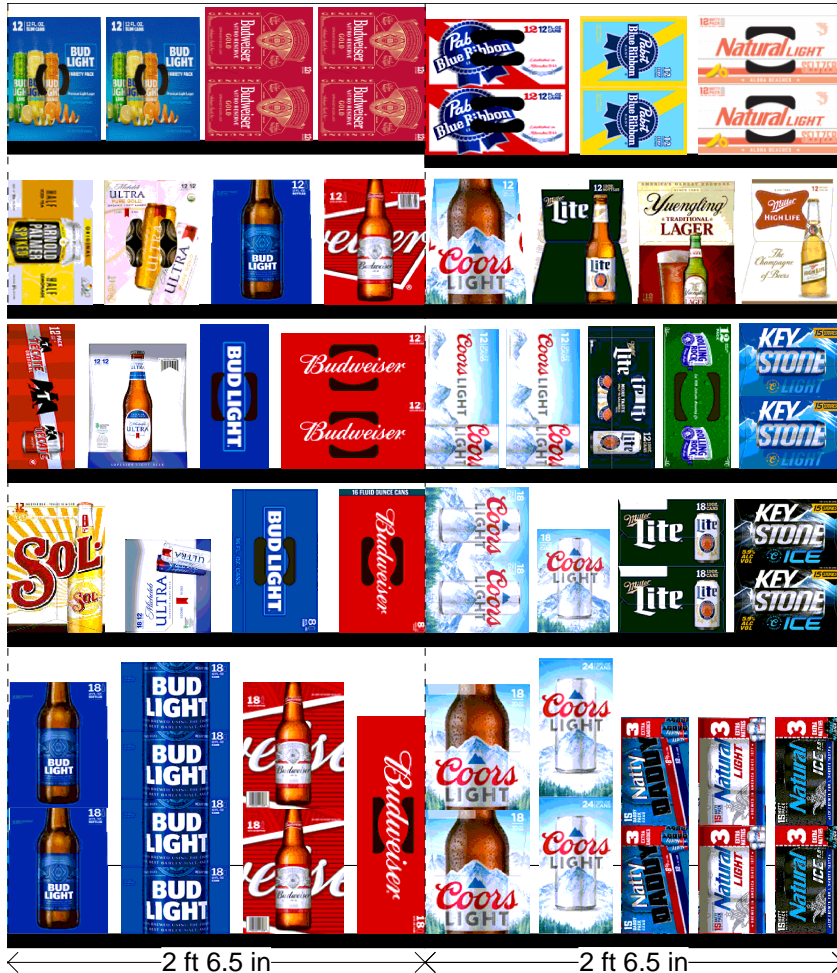
Cold

FMB always lead flow in relation to store traffic flow.
 Open a support ticket if planogram flow shown is reversed from actual store traffic flow

Segment 5 of 6 starting view

Shelf Schematic Report

RITE AID_10641 Store # 10641 # of segments: 6



Name: 5_1		W:30.50 in	D:22.00 in		
UPC (12 Digit)	Name	Ast	HFaci...	Orientat...	
018200533082	BUDLIGHT18/12BTL		1	Side	
018200532184	BUDLIGHT18/12CAN	Core	1	Side 90	
018200113086	BUD18/12BTL		1	Side	
018200112188	BUD18/12CAN	Core	1	Top 90	

Name: 5_2		W:30.50 in	D:22.00 in		
UPC (12 Digit)	Name	Ast	HFaci...	Orientat...	
072311230216	SOL12/12BTL		1	Side	
018200967214	MICHELOBULTRA18/12CAN		1	Side	
018200089893	BUDLIGHT8/16CAN		1	Top 90	
018200089817	BUD8/16CAN		1	Top 90	

Name: 5_3		W:30.50 in	D:22.00 in		
UPC (12 Digit)	Name	Ast	HFaci...	Orientat...	
089826900336	TECATE12/12CAN		1	Top 90	
018200059902	MICHELOBULTRA12/12BTL		1	Side	
018200530470	BUDLIGHT12/12CAN	Core	1	Top 90	
018200110474	BUD12/12CAN	Core	1	Top	

Name: 5_4		W:30.50 in	D:22.00 in		
UPC (12 Digit)	Name	Ast	HFaci...	Orientat...	
613008752200	ARNOLDPALMERSPIKEDHALF...	New	1	Front 90	
018200201448	MICHELOBULTRAPUREGOLD1...	PRO...	1	Top 90	
018200007699	BUDLIGHT12/12BTL		1	Side	
018200007712	BUD12/12BTL		1	Side	

Name: 5_5		W:30.50 in	D:12.00 in		
UPC (12 Digit)	Name	Ast	HFaci...	Orientat...	
018200202100	BUDLIGHTPEELSVARIETY12/1...	PRO...	2	Top 90	
018200202018	BUDWEISERNITROGOLD12/12...	PRO...	2	Side 90	

Name: 6_1		W:30.50 in	D:22.00 in		
UPC (12 Digit)	Name	Ast	HFaci...	Orientat...	
071990300784	COORSLIGHT18/12BTL	Core	1	Side	
071990316006	COORSLIGHT24/12CAN		1	Side	
018200200786	NATTYDADDY15/12CAN		1	Side	
018200200779	NATURALLIGHT15/12CAN	Core	1	Side	
018200284434	NATURALICE15/12CAN	Core	1	Side	

Rite Aid
Store# 10641
HUNTINGTON STATION , NY

FINAL

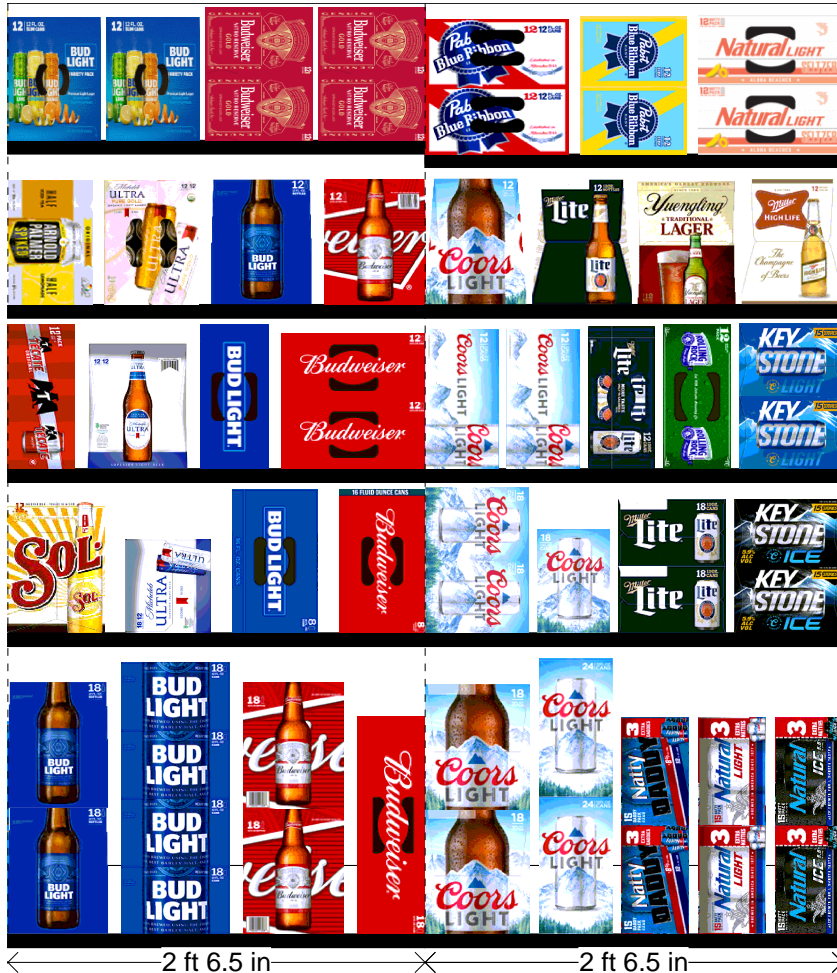
Cold

FMB always lead flow in relation to store traffic flow.
 Open a support ticket if planogram flow shown is reversed from actual store traffic flow

Segment 5 of 6 starting view

Shelf Schematic Report

RITE AID_10641 Store # 10641 # of segments: 6



Name: 6_2		W:30.50 in		D:22.00 in	
UPC (12 Digit)	Name	Ast	HFaci...	Orientat...	
071990300173	COORSLIGHT18/12CAN	Core	1	Side 90	
071990300173	COORSLIGHT18/12CAN	Core	1	Side	
034100573409	LITE18/12CAN	Core	1	Side 90	
071990281519	KEYSTONEICE15/12CAN		1	Side 90	

Name: 6_3		W:30.50 in		D:22.00 in	
UPC (12 Digit)	Name	Ast	HFaci...	Orientat...	
071990000486	COORSLIGHT12/12CAN	New	2	Top 90	
034100576363	LITE12/12CAN		1	Top 90	
071439344508	ROLLINGROCK12/12CAN		1	Top 90	
071990480455	KEYSTONELIGHT15/12CAN		1	Side 90	

Name: 6_4		W:30.50 in		D:22.00 in	
UPC (12 Digit)	Name	Ast	HFaci...	Orientat...	
071990300692	COORSLIGHT12/12BTL	Core	1	Side	
034100575090	LITE12/12BTL		1	Side	
089924278962	YUENGLINGLAGER12/12BTL		1	Side	
034100015091	HIGHLIFE12/12BTL	Core	1	Side	

Name: 6_5		W:30.50 in		D:12.00 in	
UPC (12 Digit)	Name	Ast	HFaci...	Orientat...	
022100001701	PABST12/12CAN		1	Top	
022100004122	PABSTEASY12/12CAN		1	Side 90	
018200201790	NATURALLIGHTSELTZERVARI...	PRO...	1	Top	

Rite Aid
Store# 10641
HUNTINGTON STATION , NY

FINAL

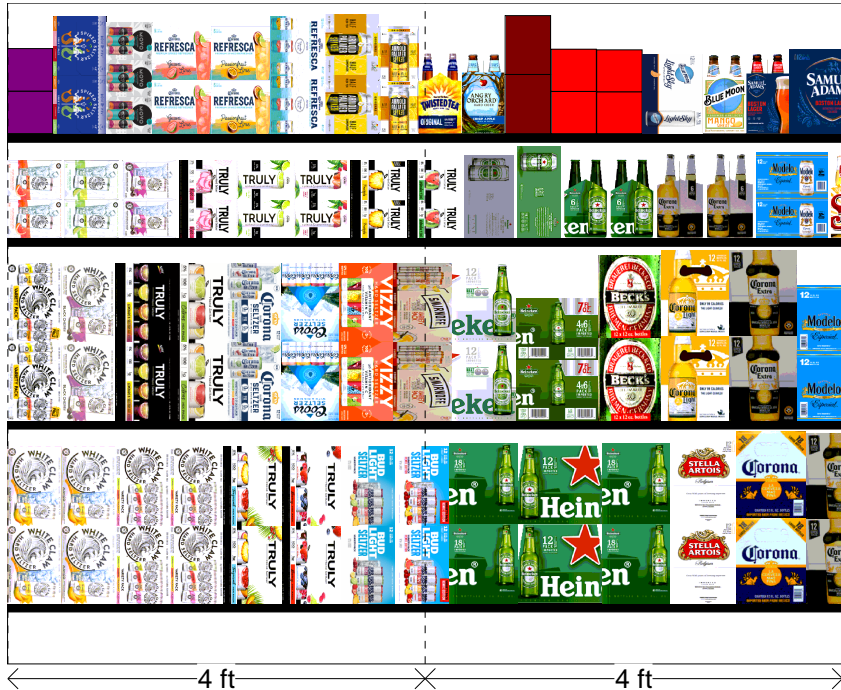
Warm

FMB always lead flow in relation to store traffic flow.
 Open a support ticket if planogram flow shown is reversed from actual store traffic flow

Segment 1 of 3 starting view

Shelf Schematic Report

RITE AID_10641 Store # 10641 # of segments: 3



Name: 2_1		W:144.00 in	D:15.50 in		
UPC (12 Digit)	Name	Ast	HFaci...	Orientat...	
635985100331	WHITECLAWMANGO12/12CAN		2	Front 90	
635985548904	WHITECLAWVARIETY12/12CA...	Core	2	Front 90	
087692008040	TRULYVARIETYTROPICAL12/1...		1	Top 90	
087692006862	TRULYVARIETYBERRY12/12C...	Core	1	Top 90	
018200202087	BUDLIGHTSELTZERVARIETY1...	PRO...	1	Front 90	
018200202179	BUDLIGHTSELTZERVARIETYR...	New	1	Front 90	
072890001528	HEINEKEN18/12BTL	New	1	Side	
072890000163	HEINEKEN12/12BTL	Core	1	Front	
072890001528	HEINEKEN18/12BTL	New	1	Side	
786150000144	STELLAARTOIS12/11.2BTL	Core	1	Side	
080660956800	CORONA18/12BTL	Core	1	Side	
080660956152	CORONA12/12BTL	Core	1	Side	

Name: 2_2		W:144.00 in	D:14.50 in		
UPC (12 Digit)	Name	Ast	HFaci...	Orientat...	
635985800064	WHITECLAWVARIETY12/12CA...	PRO...	1	Front 90	
635985260899	WHITECLAWBLACKCHERRY12...		1	Front 90	
087692009917	TRULYLEMONADEVARIETY12/...	PRO...	1	Front 90	
087692004240	TRULYVARIETYCITRUS12/12C...		1	Top 90	
033544000434	CORONASELTZERVARIETY12/...	PRO...	1	Front 90	
071990000158	COORSHARDSELTZERVARIET...	New	1	Top 90	
034100012328	VIZZYVARIETY12/12CAN(A)	PRO...	1	Front 90	
082000781424	SMIRNOFFSPIKEDSPARKLING...		1	Top 90	
072890001597	HEINEKENLIGHT12/12BTL	Core	1	Side	
072890000439	HEINEKEN24/7BTL		1	Side	
082488123006	BECKS12/12BTL	Core	1	Side	
080660956756	CORONALIGHT12/12BTL	Core	1	Side	
080660956152	CORONA12/12BTL	Core	1	Side	

Name: 2_3		W:144.00 in	D:14.50 in		
UPC (12 Digit)	Name	Ast	HFaci...	Orientat...	
635985200284	WHITECLAWRUBYGRAPEFRUI...		1	Side 90	
635985025986	WHITECLAWNATURALLIME6/1...		1	Side 90	
635985200253	WHITECLAWBLACKCHERRY6/...		1	Side 90	
087692007814	TRULYROSE6/12CAN		1	Side 90	
087692004172	TRULYCOLIMALIME6/12CAN		1	Side 90	
087692006787	TRULYWILDBERRY6/12CAN		1	Side 90	
087692009658	TRULYPINEAPPLE6/12CAN	PRO...	1	Side 90	

Rite Aid
Store# 10641
HUNTINGTON STATION , NY

FINAL

Warm

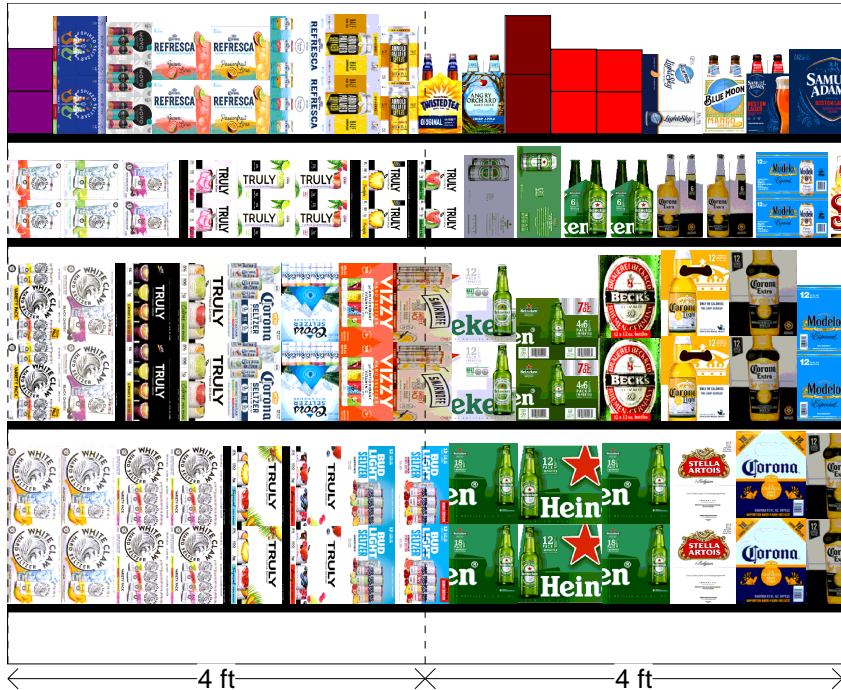
FMB always lead flow in relation to store traffic flow.
 Open a support ticket if planogram flow shown is reversed from actual store traffic flow

Segment 1 of 3 starting view

Shelf Schematic Report

RITE AID_10641 Store # 10641		# of segments: 3	
087692009894	TRULYWATERMELONKIWI6/12...	PRO...	1 Side 90
072890001887	HEINEKENLIGHT12/12CAN		1 Top 90
072890000200	HEINEKEN12/12CAN	Core	1 Top 90
072890000118	HEINEKEN6/12BTL	Core	2 Side
080660956053	CORONA6/12BTL	Core	2 Side
080660957159	MODELOESPECIAL12/12CAN	Core	1 Side 90

Name: 2_4		W:144.00 in		D:14.50 in	
UPC (12 Digit)	Name	Ast	HFaci...	Orientat...	
018200202506	BUDLIGHTPLATINUMSELTZER...	New	1	Side	
853897002271	BONANDVIVSPIKEDSELTZERV...	Move	1	Side 90	
034100012229	MOVVARIETY4/8.4CAN		1	Front 90	
033544950678	CORONAREFRESCAGUAVALI...		1	Front	
033544950630	CORONAREFRESCAPASSION...		1	Front	
033544000137	CORONAVARIETYREFRESCA1...		1	Side 90	
613008752200	ARNOLDPALMERSPIKEDHALF...	New	1	Side 90	
613008748333	ARNOLDPALMERSPIKEDHALF...		1	Side	
087692831020	TWISTEDTEAORIGINAL6/12BTL		1	Side	
087692821021	ANGRYORCHARDCRISPAPPL...		1	Side	
4005249004181	VELTINPILSENER4/16.9CAN		1	Side	
030613000302	BROOKLYNLAGER6/12CAN		1	Side	
609408729799	PORTJEFFPARTYBOAT6/12CAN	PRO...	1	Side	
071990095925	BLUEMOONLIGHTSKY12/12CAN	PRO...	1	Top 90	
071990095611	BLUEMOONMANGOWHEAT6/1...		1	Side	
087692100126	SAMUELADAMS BOSTON LAGE...		1	Side	
087692100140	SAMUELADAMS BOSTON LAGE...		1	Front	



Rite Aid
Store# 10641
HUNTINGTON STATION , NY

FINAL

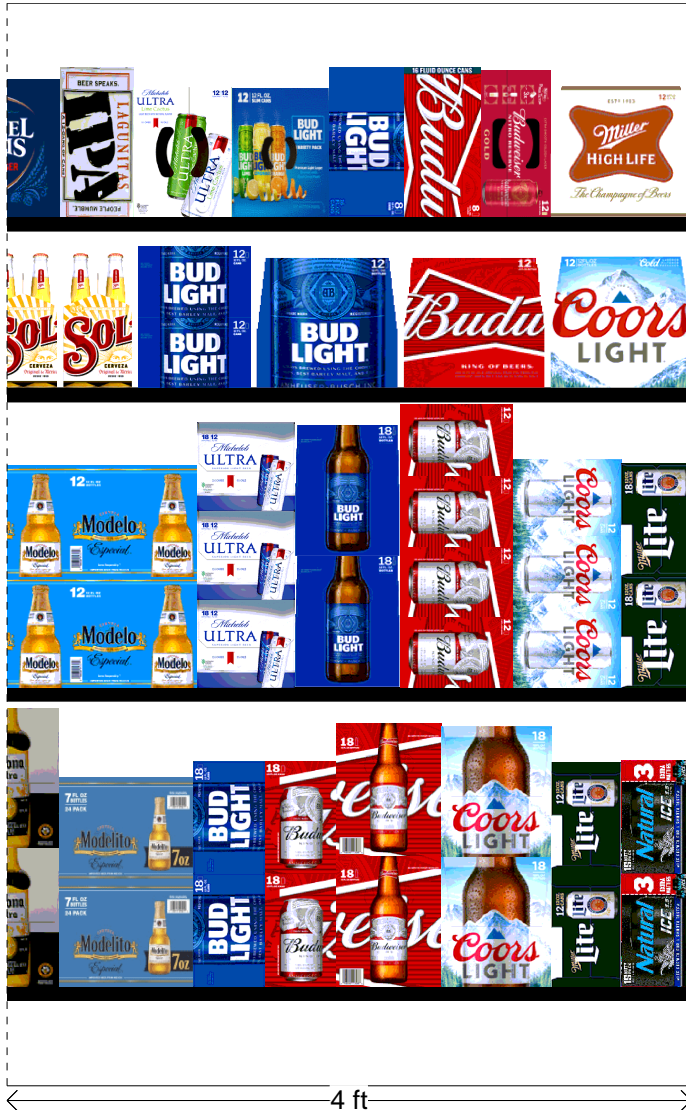
Warm

FMB always lead flow in relation to store traffic flow.
 Open a support ticket if planogram flow shown is reversed from actual store traffic flow

Segment 3 of 3 starting view

Shelf Schematic Report

RITE AID_10641 Store # 10641 # of segments: 3



Name: 2_1		W:144.00 in	D:15.50 in		
UPC (12 Digit)	Name	Ast	HFaci...	Orientat...	
033544000212	MODELOESPECIAL24/7BTL	PRO...	1	Side	
018200532184	BUDLIGHT18/12CAN	Core	1	Side	
018200112188	BUD18/12CAN	Core	1	Side	
018200113086	BUD18/12BTL		1	Side	
071990300784	COORSLIGHT18/12BTL	Core	1	Side	
034100576363	LITE12/12CAN		1	Side	
018200284434	NATURALICE15/12CAN	Core	1	Side	

Name: 2_2		W:144.00 in	D:14.50 in		
UPC (12 Digit)	Name	Ast	HFaci...	Orientat...	
080660957579	MODELOESPECIAL12/12BTL	Core	2	Side	
018200967214	MICHELOBULTRA18/12CAN		1	Side 90	
018200533082	BUDLIGHT18/12BTL		1	Side	
018200110474	BUD12/12CAN	Core	1	Side 90	
071990000486	COORSLIGHT12/12CAN	New	1	Side 90	
034100573409	LITE18/12CAN	Core	1	Side	

Name: 2_3		W:144.00 in	D:14.50 in		
UPC (12 Digit)	Name	Ast	HFaci...	Orientat...	
072311630214	SOL6/12BTL		2	Side	
018200530470	BUDLIGHT12/12CAN	Core	1	Side 90	
018200007699	BUDLIGHT12/12BTL		1	Front	
018200007712	BUD12/12BTL		1	Front	
071990300692	COORSLIGHT12/12BTL	Core	1	Front	

Name: 2_4		W:144.00 in	D:14.50 in		
UPC (12 Digit)	Name	Ast	HFaci...	Orientat...	
723830212121	LAGUNITASIPA12/12CAN		1	Top 90	
018200169847	MICHELOBULTRALIMEACTU...	PRO...	1	Top 90	
018200202100	BUDLIGHTPEELSVARIETY12/1...	PRO...	1	Top 90	
018200089893	BUDLIGHT8/16CAN		1	Front 90	
018200089817	BUD8/16CAN		1	Front 90	
018200202018	BUDWEISERNITROGOLD12/12...	PRO...	1	Top 90	
034100015091	HIGHLIFE12/12BTL	Core	1	Front	