



2 ft 9 in

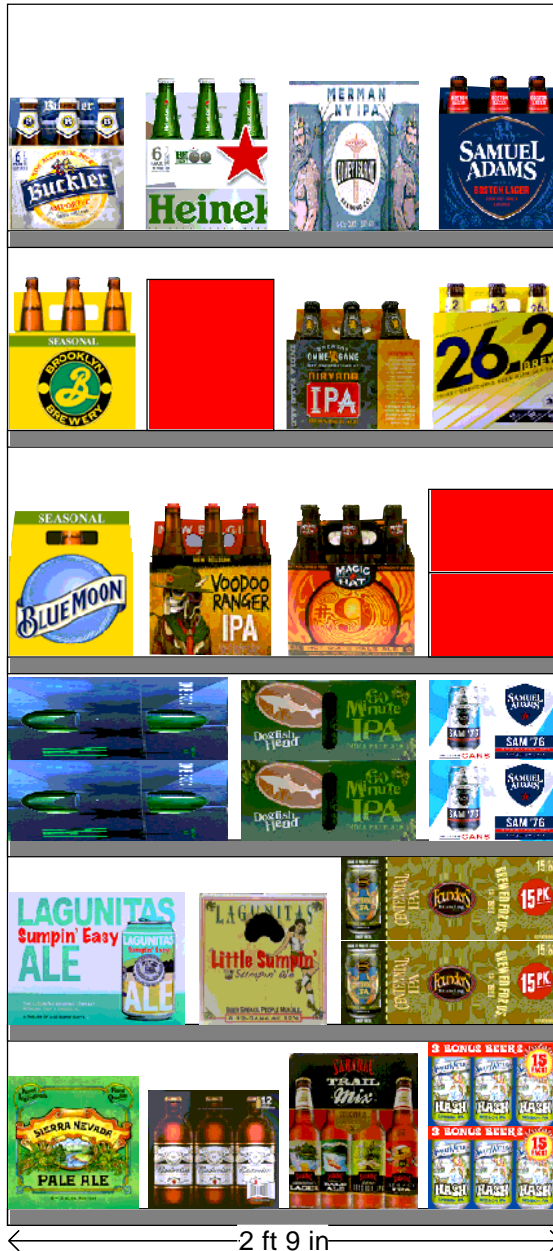
SHOPRITE_227

Store # 227

Cooler Size: WAKEFERN FOOD CORP/HQ

Address: 46 THOMPSON SQ

MONTICELLO , NY



| | | | | | |
|--------------|-------------|-----------------|-----------------|-----------------|------------------|
| SHOPRITE_227 | Store # 227 | H: 6 ft 1.00 in | W: 2 ft 9.00 in | D: 1 ft 6.00 in | # of segments: 1 |
|--------------|-------------|-----------------|-----------------|-----------------|------------------|

| Name: 1_1 | | W:33.00 in | D:18.00 in | Avail Space: 1.89 in | | Ht Space: 10.00 in | |
|-----------|-------------|---------------------------------|---------------|----------------------|-------------|--------------------|--|
| ID | UPC | Name | Category | HFacings | Orientation | Units | |
| 17211 | 8378337512 | SIERRA NEVADA PALE ALE 12/ 1... | ABOVE PREMIUM | 1 | Side | 1 | |
| 68563 | 1820020068 | BUDWEISER RESERVE SEASON... | PREMIUM | 1 | Side | 1 | |
| 179 | 0946808164 | SARANAC ADIRONDACK TRAIL ... | ABOVE PREMIUM | 1 | Side | 1 | |
| 46118 | 63123467112 | SWEETWATER HOP HASH SES... | ABOVE PREMIUM | 1 | Side 90 | 2 | |

| Name: 1_2 | | W:33.00 in | D:18.00 in | Avail Space: 1.77 in | | Ht Space: 10.00 in | |
|-----------|-------------|---------------------------------|---------------|----------------------|-------------|--------------------|--|
| ID | UPC | Name | Category | HFacings | Orientation | Units | |
| 69223 | 72383010045 | LAGUNITAS SUMPIN EASY 12/ 1... | ABOVE PREMIUM | 1 | Front | 3 | |
| 10872 | 72383010012 | LAGUNITAS LITTLE SUMPIN 12/ ... | ABOVE PREMIUM | 1 | Side | 1 | |
| 59698 | 64286090005 | FOUNDERS CENTENNIAL IPA 15... | ABOVE PREMIUM | 1 | Top | 4 | |

| Name: 1_3 | | W:33.00 in | D:18.00 in | Avail Space: 1.58 in | | Ht Space: 10.00 in | |
|-----------|-------------|--------------------------------|---------------|----------------------|-------------|--------------------|--|
| ID | UPC | Name | Category | HFacings | Orientation | Units | |
| 58827 | 73692011651 | GOOSE ISLAND IPA 15/ 12 CAN | ABOVE PREMIUM | 1 | Top | 4 | |
| 45591 | 63848900189 | DOGFISH HEAD 60 MINUTE IPA ... | ABOVE PREMIUM | 1 | Top | 4 | |
| 65030 | 8769200497 | SAMUEL ADAMS 76 12/ 12 CAN | ABOVE PREMIUM | 1 | Side 90 | 2 | |

| Name: 1_4 | | W:33.00 in | D:18.00 in | Avail Space: 2.68 in | | Ht Space: 12.50 in | |
|-----------|-------------|--------------------------------|---------------|----------------------|-------------|--------------------|--|
| ID | UPC | Name | Category | HFacings | Orientation | Units | |
| 10192 | 7199009536 | BLUE MOON SEASONAL 12/ 12 B... | ABOVE PREMIUM | 1 | Side | 1 | |
| 13018 | 75452700066 | NEW BELGIUM VODOO RANG... | ABOVE PREMIUM | 1 | Front | 3 | |
| 15034 | 79837312602 | MAGIC HAT 9 NOT QUITE PALE ... | ABOVE PREMIUM | 1 | Front | 3 | |
| 85046 | 8769200788 | SAMUEL ADAMS NEW ENGLAN... | ABOVE PREMIUM | 1 | Side 90 | 2 | |

| Name: 1_5 | | W:33.00 in | D:18.00 in | Avail Space: 2.04 in | | Ht Space: 11.00 in | |
|-----------|-------------|--------------------------------|---------------|----------------------|-------------|--------------------|--|
| ID | UPC | Name | Category | HFacings | Orientation | Units | |
| 2638 | 3061300053 | BROOKLYN SEASONAL 6/ 12 BTL | ABOVE PREMIUM | 1 | Front | 3 | |
| 29379 | 85856800401 | ROSCOE TROUT TOWN AMERIC... | ABOVE PREMIUM | 1 | Front | 3 | |
| 7224 | 64944099818 | OMMEGANG NIRVANA IPA 6/ 12 ... | ABOVE PREMIUM | 1 | Front | 3 | |
| 89613 | 8769200846 | SAMUEL ADAMS MARATHON 26... | ABOVE PREMIUM | 1 | Front | 3 | |

| Name: 1_6 | | W:33.00 in | D:18.00 in | Avail Space: 3.68 in | | Ht Space: 13.50 in | |
|-----------|-------------|-----------------------------|---------------|----------------------|-------------|--------------------|--|
| ID | UPC | Name | Category | HFacings | Orientation | Units | |
| 11307 | 7289000030 | BUCKLER NEAR BEER 6/ 12 BTL | ABOVE PREMIUM | 1 | Front | 3 | |
| 11341 | 7289000158 | HEINEKEN LIGHT 6/ 12 BTL | ABOVE PREMIUM | 1 | Front | 3 | |
| 85399 | 88715100418 | CONEY ISLAND MERMEN NEW ... | ABOVE PREMIUM | 1 | Front | 3 | |
| 21956 | 8769210012 | SAMUEL ADAMS BOSTON LAGE... | ABOVE PREMIUM | 1 | Front | 3 | |

SHOPRITE_227

Store # 227

SHOPRITE_227 Store # 227 H: 6 ft 1.00 in W: 2 ft 9.00 in D: 1 ft 6.00 in # of segments: 1

| Name: 1_1 | | W:33.00 in | D:18.00 in | Avail Space: 1.89 in | Ht Space: 10.00 in | |
|-----------|-------------|-------------------------------|---------------|----------------------|--------------------|-------|
| ID | UPC | Name | Category | HFacings | Orientation | Units |
| 17211 | 8378337512 | SIERRA NEVADA PALE ALE 12/... | ABOVE PREMIUM | 1 | Side | 1 |
| 68563 | 1820020068 | BUDWEISER RESERVE SEASO... | PREMIUM | 1 | Side | 1 |
| 179 | 0946808164 | SARANAC ADIRONDACK TRAIL ... | ABOVE PREMIUM | 1 | Side | 1 |
| 46118 | 63123467112 | SWEETWATER HOP HASH SES... | ABOVE PREMIUM | 1 | Side 90 | 2 |

| Name: 1_2 | | W:33.00 in | D:18.00 in | Avail Space: 1.77 in | Ht Space: 10.00 in | |
|-----------|-------------|--------------------------------|---------------|----------------------|--------------------|-------|
| ID | UPC | Name | Category | HFacings | Orientation | Units |
| 69223 | 72383010045 | LAGUNITAS SUMPIN EASY 12/1... | ABOVE PREMIUM | 1 | Front | 3 |
| 10872 | 72383010012 | LAGUNITAS LITTLE SUMPIN 12/... | ABOVE PREMIUM | 1 | Side | 1 |
| 59698 | 64286090005 | FOUNDERS CENTENNIAL IPA 1... | ABOVE PREMIUM | 1 | Top | 4 |

| Name: 1_3 | | W:33.00 in | D:18.00 in | Avail Space: 1.58 in | Ht Space: 10.00 in | |
|-----------|-------------|-------------------------------|---------------|----------------------|--------------------|-------|
| ID | UPC | Name | Category | HFacings | Orientation | Units |
| 58827 | 73692011651 | GOOSE ISLAND IPA 15/12 CAN | ABOVE PREMIUM | 1 | Top | 4 |
| 45591 | 63848900189 | DOGFISH HEAD 60 MINUTE IPA... | ABOVE PREMIUM | 1 | Top | 4 |
| 65030 | 8769200497 | SAMUEL ADAMS 76 12/12 CAN | ABOVE PREMIUM | 1 | Side 90 | 2 |

| Name: 1_4 | | W:33.00 in | D:18.00 in | Avail Space: 2.68 in | Ht Space: 12.50 in | |
|-----------|-------------|--------------------------------|---------------|----------------------|--------------------|-------|
| ID | UPC | Name | Category | HFacings | Orientation | Units |
| 10192 | 7199009536 | BLUE MOON SEASONAL 12/12 ... | ABOVE PREMIUM | 1 | Side | 1 |
| 13018 | 75452700066 | NEW BELGIUM VOODOO RANG... | ABOVE PREMIUM | 1 | Front | 3 |
| 15034 | 79837312602 | MAGIC HAT 9 NOT QUITE PALE ... | ABOVE PREMIUM | 1 | Front | 3 |
| 85046 | 8769200788 | SAMUEL ADAMS NEW ENGLAN... | ABOVE PREMIUM | 1 | Side 90 | 2 |

| Name: 1_5 | | W:33.00 in | D:18.00 in | Avail Space: 2.04 in | Ht Space: 11.00 in | |
|-----------|-------------|-------------------------------|---------------|----------------------|--------------------|-------|
| ID | UPC | Name | Category | HFacings | Orientation | Units |
| 2638 | 3061300053 | BROOKLYN SEASONAL 6/12 BTL | ABOVE PREMIUM | 1 | Front | 3 |
| 29379 | 85856800401 | ROSCOE TROUT TOWN AMERI... | ABOVE PREMIUM | 1 | Front | 3 |
| 7224 | 64944099818 | OMMEGANG NIRVANA IPA 6/12 ... | ABOVE PREMIUM | 1 | Front | 3 |
| 89613 | 8769200846 | SAMUEL ADAMS MARATHON 2... | ABOVE PREMIUM | 1 | Front | 3 |

| Name: 1_6 | | W:33.00 in | D:18.00 in | Avail Space: 3.68 in | Ht Space: 13.50 in | |
|-----------|-------------|-----------------------------|---------------|----------------------|--------------------|-------|
| ID | UPC | Name | Category | HFacings | Orientation | Units |
| 11307 | 7289000030 | BUCKLER NEAR BEER 6/12 BTL | ABOVE PREMIUM | 1 | Front | 3 |
| 11341 | 7289000158 | HEINEKEN LIGHT 6/12 BTL | ABOVE PREMIUM | 1 | Front | 3 |
| 85399 | 88715100418 | CONEY ISLAND MERMAN NEW ... | ABOVE PREMIUM | 1 | Front | 3 |
| 21956 | 8769210012 | SAMUEL ADAMS BOSTON LAG... | ABOVE PREMIUM | 1 | Front | 3 |

SHOPRITE_227

Store # 227

Shop Rite Assortment Worksheet

Name: 227_3ft_OPEN_WARM

SCALE SHEET MAKE EVERY FOOD CORRIDOR



SHOPRITE_227

Store # 227

Cooler Size: WAKEFERN FOOD CORP/HQ

Address: 46 THOMPSON SQ

MONTICELLO , NY



| | | | | | |
|--------------|-------------|------------------|----------|---------|------------------|
| SHOPRITE_227 | Store # 227 | H: 4 ft 11.00 in | W: 32 ft | D: 2 ft | # of segments: 8 |
|--------------|-------------|------------------|----------|---------|------------------|

| | | | | |
|---------------------|-------------|------------|------------------------|--------------------|
| Name: Deleted Items | W:384.00 in | D:24.00 in | Avail Space: 384.00 in | Ht Space: 14.00 in |
|---------------------|-------------|------------|------------------------|--------------------|

| | | | | |
|-------------------|-----------|------------|----------------------|-------------------|
| Name: Added Items | W:6.19 in | D:24.00 in | Avail Space: 0.00 in | Ht Space: 0.00 in |
|-------------------|-----------|------------|----------------------|-------------------|

| ID | UPC | Name | Category | HFacings | Orientation | Units |
|------|------------|---------------------------|---------------|----------|-------------|-------|
| 1849 | 1820096715 | MICHELOB ULTRA 24/ 12 CAN | ABOVE PREMIUM | 1 | Side | 1 |

| | | | | |
|-----------|-------------|------------|----------------------|--------------------|
| Name: 4_1 | W:384.00 in | D:32.00 in | Avail Space: 1.26 in | Ht Space: 21.00 in |
|-----------|-------------|------------|----------------------|--------------------|

| ID | UPC | Name | Category | HFacings | Orientation | Units |
|-------|------------|-------------------------------|----------|----------|-------------|-------|
| 61975 | 1820020077 | NATURAL LIGHT 15/ 12 CAN | ECONOMY | 1 | Side 90 | 8 |
| 61976 | 1820020078 | NATTY DADDY 15/ 12 CAN | ECONOMY | 1 | Side 90 | 8 |
| 92510 | 1820020133 | NATURDAYS 12/ 12 CAN | ECONOMY | 1 | Side | 6 |
| 10888 | 7248002403 | SCHAEFER 12/ 12 CAN | ECONOMY | 1 | Side | 6 |
| 8916 | 7031000012 | GENESEEE CREAM ALE 30/ 12 CAN | ECONOMY | 1 | Side | 4 |
| 45405 | 7199048045 | KEYSTONE LIGHT 15/ 12 CAN | ECONOMY | 1 | Top 90 | 4 |
| 52793 | 7199028151 | KEYSTONE ICE 15/ 12 CAN | ECONOMY | 1 | Side 90 | 6 |
| 1304 | 1820011168 | BUD 24/ 12 CAN | PREMIUM | 1 | Side 90 | 8 |
| 1310 | 1820011308 | BUD 18/ 12 BTL | PREMIUM | 1 | Side | 4 |
| 1312 | 1820011349 | BUD 24/ 12 BTL (HG) | PREMIUM | 1 | Side | 4 |
| 1670 | 1820053308 | BUD LIGHT 18/ 12 BTL | PREMIUM | 1 | Side | 4 |
| 1670 | 1820053308 | BUD LIGHT 18/ 12 BTL | PREMIUM | 1 | Side | 4 |
| 1672 | 1820053349 | BUD LIGHT 24/ 12 BTL (HG) | PREMIUM | 1 | Side | 4 |

| | | | | |
|-----------|-------------|------------|----------------------|--------------------|
| Name: 4_2 | W:384.00 in | D:20.00 in | Avail Space: 3.21 in | Ht Space: 11.00 in |
|-----------|-------------|------------|----------------------|--------------------|

| ID | UPC | Name | Category | HFacings | Orientation | Units |
|-------|------------|-----------------------------|----------|----------|-------------|-------|
| 13877 | 7825000328 | STEEL RESERVE 211 1/ 24 CAN | ECONOMY | 2 | Front | 14 |
| 1522 | 1820025002 | NATURAL LIGHT 1/ 25 CAN | ECONOMY | 2 | Front | 14 |
| 1533 | 1820025013 | NATTY DADDY 1/ 25 CAN | ECONOMY | 6 | Front | 42 |
| 1528 | 1820025008 | NATURAL ICE 1/ 25 CAN | ECONOMY | 2 | Front | 14 |
| 2326 | 2210011219 | PABST 30/ 12 CAN | ECONOMY | 1 | Side | 1 |
| 3193 | 3410001341 | HIGH LIFE 30/ 12 CAN | ECONOMY | 1 | Side | 1 |
| 9886 | 7143934450 | ROLLING ROCK 12/ 12 CAN | ECONOMY | 1 | Side 90 | 4 |
| 1307 | 1820011218 | BUD 18/ 12 CAN | PREMIUM | 2 | Side 90 | 4 |
| 1664 | 1820053168 | BUD LIGHT 24/ 12 CAN | PREMIUM | 1 | Top | 4 |

| | | | | |
|-----------|-------------|------------|----------------------|--------------------|
| Name: 4_3 | W:384.00 in | D:20.00 in | Avail Space: 1.30 in | Ht Space: 11.50 in |
|-----------|-------------|------------|----------------------|--------------------|

| ID | UPC | Name | Category | HFacings | Orientation | Units |
|-------|------------|------------------------------|----------|----------|-------------|-------|
| 10412 | 7199047712 | KEYSTONE ICE 1/ 24 CAN | ECONOMY | 2 | Front | 14 |
| 10436 | 7199048024 | KEYSTONE LIGHT 1/ 24 CAN | ECONOMY | 2 | Front | 14 |
| 3128 | 3410000820 | MILWAUKES BEST ICE 1/ 24 CAN | ECONOMY | 2 | Front | 14 |
| 1521 | 1820025001 | BUD LIGHT 1/ 25 CAN | PREMIUM | 2 | Front | 14 |
| 1520 | 1820025000 | BUD 1/ 25 CAN | PREMIUM | 2 | Front | 14 |
| 10346 | 7199030065 | COORS LIGHT 1/ 24 CAN | PREMIUM | 2 | Front | 14 |
| 2241 | 2210000170 | PABST 12/ 12 CAN | ECONOMY | 1 | Side 90 | 4 |
| 3198 | 3410001509 | HIGH LIFE 12/ 12 BTL | ECONOMY | 1 | Side | 2 |
| 9905 | 7143945712 | ROLLING ROCK 12/ 12 BTL | ECONOMY | 1 | Side | 2 |
| 1058 | 1820000771 | BUD 12/ 12 BTL | PREMIUM | 1 | Side | 2 |
| 1297 | 1820011047 | BUD 12/ 12 CAN | PREMIUM | 1 | Side 90 | 4 |
| 1056 | 1820000769 | BUD LIGHT 12/ 12 BTL | PREMIUM | 1 | Side | 2 |
| 1659 | 1820053047 | BUD LIGHT 12/ 12 CAN | PREMIUM | 2 | Top | 8 |

| | | | | |
|-----------|-------------|------------|----------------------|--------------------|
| Name: 4_4 | W:384.00 in | D:20.00 in | Avail Space: 1.30 in | Ht Space: 14.50 in |
|-----------|-------------|------------|----------------------|--------------------|

| ID | UPC | Name | Category | HFacings | Orientation | Units |
|------|------------|-----------------------------|---------------|----------|-------------|-------|
| 9488 | 7089718331 | FOSTERS PREMIUM 1/ 25.4 CAN | ABOVE PREMIUM | 2 | Side | 12 |
| 9452 | 7089701331 | FOSTERS 1/ 25.4 CAN | ABOVE PREMIUM | 2 | Front | 12 |

Cooler Size: WAKEFERN FOOD CORP/HQ

Address: 46 THOMPSON SQ

MONTICELLO , NY

| | | | | | | |
|-------|-------------|-------------------------------|---------------|---|-------|----|
| 89609 | 72383001192 | LAGUNITAS IPA 1/ 19.2 CAN | ABOVE PREMIUM | 2 | Front | 14 |
| 43248 | 64286013024 | FOUNDERS ALL DAY SESSION I... | ABOVE PREMIUM | 2 | Front | 14 |
| 66037 | 78615000170 | STELLA ARTOIS 1/ 19.2 CAN | ABOVE PREMIUM | 2 | Side | 14 |
| 1530 | 1820025010 | MICHELOB ULTRA 1/25 CAN | ABOVE PREMIUM | 2 | Front | 12 |
| 10243 | 7199010071 | COORS BANQUET 1/24 CAN | PREMIUM | 3 | Front | 18 |
| 624 | 1820000063 | BUSCH 6/ 16 CAN | ECONOMY | 2 | Front | 6 |
| 1065 | 1820000784 | ODOULS NEAR BEER 6/ 12 BTL | NA BEER | 1 | Front | 3 |
| 1084 | 1820000834 | BUD 6/ 12 BTL | PREMIUM | 1 | Front | 3 |
| 587 | 1820000016 | BUD 6/ 12 CAN | PREMIUM | 1 | Side | 4 |
| 1083 | 1820000833 | BUD LIGHT 6/ 12 BTL | PREMIUM | 1 | Front | 3 |
| 3579 | 3410057636 | LITE 12/ 12 CAN | PREMIUM | 1 | Front | 4 |



SHOPRITE_227

Store # 227

Cooler Size: WAKEFERN FOOD CORP/HQ

Address: 46 THOMPSON SQ

MONTICELLO , NY



| | | | | | |
|--------------|-------------|------------------|----------|---------|------------------|
| SHOPRITE_227 | Store # 227 | H: 4 ft 11.00 in | W: 32 ft | D: 2 ft | # of segments: 8 |
|--------------|-------------|------------------|----------|---------|------------------|

| | | | | |
|---------------------|-------------|------------|------------------------|--------------------|
| Name: Deleted Items | W:384.00 in | D:24.00 in | Avail Space: 384.00 in | Ht Space: 14.00 in |
|---------------------|-------------|------------|------------------------|--------------------|

| | | | | |
|-----------|-------------|------------|----------------------|--------------------|
| Name: 4_1 | W:384.00 in | D:32.00 in | Avail Space: 1.26 in | Ht Space: 21.00 in |
|-----------|-------------|------------|----------------------|--------------------|

| ID | UPC | Name | Category | HFacings | Orientation | Units |
|-------|------------|-------------------------------|---------------|----------|-------------|-------|
| 3532 | 3410057256 | LITE 18/ 12 BTL | PREMIUM | 1 | Side | 4 |
| 3565 | 3410057509 | LITE 12/ 12 BTL | PREMIUM | 1 | Side | 6 |
| 10352 | 7199030078 | COORS LIGHT 18/ 12 BTL | PREMIUM | 2 | Side | 8 |
| 10353 | 7199030079 | COORS LIGHT 24/ 12 BTL (HG) | PREMIUM | 1 | Side | 4 |
| 10329 | 7199030017 | COORS LIGHT 18/ 12 CAN | PREMIUM | 1 | Front 90 | 6 |
| 23902 | 8992427896 | YUENGLING LAGER 12/ 12 BTL | PREMIUM | 2 | Side | 12 |
| 23909 | 8992429386 | YUENGLING BLACK AND TAN 12... | PREMIUM | 1 | Side | 6 |
| 1830 | 1820096624 | MICHELOB ULTRA 18/ 12 BTL | ABOVE PREMIUM | 1 | Side | 4 |
| 1850 | 1820096721 | MICHELOB ULTRA 18/ 12 CAN | ABOVE PREMIUM | 1 | Side 90 | 6 |
| 1356 | 1820014990 | BUD LIGHT LIME 12/ 12 BTL | ABOVE PREMIUM | 1 | Side | 6 |

| | | | | |
|-----------|-------------|------------|----------------------|--------------------|
| Name: 4_2 | W:384.00 in | D:20.00 in | Avail Space: 3.21 in | Ht Space: 11.00 in |
|-----------|-------------|------------|----------------------|--------------------|

| ID | UPC | Name | Category | HFacings | Orientation | Units |
|-------|------------|-------------------------------|---------------|----------|-------------|-------|
| 1667 | 1820053218 | BUD LIGHT 18/ 12 CAN | PREMIUM | 1 | Top | 4 |
| 3541 | 3410057306 | LITE 24/ 12 CAN | PREMIUM | 2 | Side | 2 |
| 10380 | 7199031600 | COORS LIGHT 24/ 12 CAN | PREMIUM | 3 | Side 90 | 6 |
| 23915 | 8992441003 | YUENGLING LAGER 24/ 12 BTL | PREMIUM | 2 | Side | 2 |
| 65828 | 1820020083 | MICHELOB ULTRA PURE GOLD ... | ABOVE PREMIUM | 1 | Side | 2 |
| 1849 | 1820096715 | MICHELOB ULTRA 24/ 12 CAN | ABOVE PREMIUM | 1 | Front | 3 |
| 1428 | 1820018992 | BUD LIGHT PLATINUM 12/ 12 BTL | ABOVE PREMIUM | 1 | Side | 2 |

| | | | | |
|-----------|-------------|------------|----------------------|--------------------|
| Name: 4_3 | W:384.00 in | D:20.00 in | Avail Space: 1.30 in | Ht Space: 11.50 in |
|-----------|-------------|------------|----------------------|--------------------|

| ID | UPC | Name | Category | HFacings | Orientation | Units |
|-------|------------|------------------------------|---------------|----------|-------------|-------|
| 3552 | 3410057340 | LITE 18/ 12 CAN | PREMIUM | 1 | Side 90 | 2 |
| 10234 | 7199010020 | COORS BANQUET 18/ 12 CAN | PREMIUM | 1 | Side 90 | 2 |
| 10348 | 7199030069 | COORS LIGHT 12/ 12 BTL | PREMIUM | 2 | Side | 4 |
| 10164 | 7199000048 | COORS LIGHT 12/ 12 CAN | PREMIUM | 2 | Side 90 | 8 |
| 68457 | 8992433125 | YUENGLING GOLDEN PILSNER ... | PREMIUM | 1 | Front | 2 |
| 69618 | 1820020080 | BUD LIGHT ORANGE 12/ 12 BTL | ABOVE PREMIUM | 1 | Side | 2 |
| 58373 | 1820020019 | MICHELOB ULTRA LIME CACTU... | ABOVE PREMIUM | 1 | Side | 2 |
| 1241 | 182006991 | MICHELOB ULTRA 12/ 12 CAN | ABOVE PREMIUM | 1 | Top 90 | 3 |
| 1228 | 1820005990 | MICHELOB ULTRA 12/ 12 BTL | ABOVE PREMIUM | 1 | Front | 2 |
| 5922 | 6206705155 | LABATT BLUE 12/ 11.5 BTL | ABOVE PREMIUM | 1 | Side | 2 |

| | | | | |
|-----------|-------------|------------|----------------------|--------------------|
| Name: 4_4 | W:384.00 in | D:20.00 in | Avail Space: 1.30 in | Ht Space: 14.50 in |
|-----------|-------------|------------|----------------------|--------------------|

| ID | UPC | Name | Category | HFacings | Orientation | Units |
|-------|-------------|---------------------------------|---------------|----------|-------------|-------|
| 10322 | 7199030005 | COORS LIGHT 6/ 12 BTL | PREMIUM | 1 | Front | 4 |
| 10155 | 7199000008 | COORS LIGHT 6/ 12 CAN | PREMIUM | 1 | Front | 6 |
| 10374 | 7199030125 | COORS LIGHT 12/ 8 CAN | PREMIUM | 1 | Front | 5 |
| 23929 | 8992495432 | YUENGLING BLACK AND TAN 6/ ... | PREMIUM | 1 | Front | 3 |
| 23900 | 8992427891 | YUENGLING LAGER 6/ 12 BTL | PREMIUM | 1 | Front | 3 |
| 23903 | 8992427898 | YUENGLING LAGER 12/ 12 CAN | PREMIUM | 2 | Side 90 | 4 |
| 1227 | 1820005989 | MICHELOB ULTRA 6/ 12 BTL | ABOVE PREMIUM | 1 | Front | 3 |
| 10452 | 7199070002 | KILLIANS IRISH RED 6/ 12 BTL | ABOVE PREMIUM | 1 | Front | 3 |
| 52632 | 86326700005 | NEWBURGH MEGA BOSS 4/ 16 C... | ABOVE PREMIUM | 1 | Front | 3 |
| 2616 | 3061300001 | BROOKLYN LAGER 6/ 12 BTL | ABOVE PREMIUM | 1 | Front | 4 |
| 15961 | 81760601020 | CAPTAIN LAWRENCE IPA 6/ 12 B... | ABOVE PREMIUM | 1 | Front | 3 |
| 85208 | 81760601078 | CAPTAIN LAWRENCE SEASONA... | ABOVE PREMIUM | 1 | Front | 3 |

SHOPRITE_227

Store # 227

Cooler Size: WAKEFERN FOOD CORP/HQ

Address: 46 THOMPSON SQ

MONTICELLO , NY

| | | | | | |
|--------------|-------------|------------------|----------|---------|------------------|
| SHOPRITE_227 | Store # 227 | H: 4 ft 11.00 in | W: 32 ft | D: 2 ft | # of segments: 8 |
|--------------|-------------|------------------|----------|---------|------------------|

| | | | | |
|---------------------|-------------|------------|------------------------|--------------------|
| Name: Deleted Items | W:384.00 in | D:24.00 in | Avail Space: 384.00 in | Ht Space: 14.00 in |
|---------------------|-------------|------------|------------------------|--------------------|

| | | | | |
|-----------|-------------|------------|----------------------|--------------------|
| Name: 4_1 | W:384.00 in | D:32.00 in | Avail Space: 1.26 in | Ht Space: 21.00 in |
|-----------|-------------|------------|----------------------|--------------------|

| ID | UPC | Name | Category | HFacings | Orientation | Units |
|-------|-------------|---------------------------------|---------------|----------|-------------|-------|
| 10031 | 7167007106 | SARANAC 12 BEERS 12/ 12 BTL | ABOVE PREMIUM | 1 | Side | 6 |
| 13010 | 75452700024 | NEW BELGIUM FAT TIRE 12/ 12 ... | ABOVE PREMIUM | 1 | Side | 6 |
| 7044 | 64286090024 | FOUNDERS ALL DAY SESSION I... | ABOVE PREMIUM | 1 | Side | 4 |
| 10183 | 7199009516 | BLUE MOON BELGIAN WHITE 12... | ABOVE PREMIUM | 1 | Side | 6 |
| 21940 | 8769201103 | SAMUEL ADAMS SEASONAL 12/ ... | ABOVE PREMIUM | 1 | Side | 6 |
| 21957 | 8769210014 | SAMUEL ADAMS BOSTON LAGE... | ABOVE PREMIUM | 1 | Side | 6 |
| 16691 | 8248812300 | BECKS 12/ 12 BTL | ABOVE PREMIUM | 1 | Front | 8 |
| 14094 | 78615000014 | STELLA ARTOIS 12/ 11.2 BTL | ABOVE PREMIUM | 1 | Side | 6 |
| 14094 | 78615000014 | STELLA ARTOIS 12/ 11.2 BTL | ABOVE PREMIUM | 1 | Front | 8 |
| 11342 | 7289000159 | HEINEKEN LIGHT 12/ 12 BTL | ABOVE PREMIUM | 1 | Side | 6 |
| 11300 | 7289000016 | HEINEKEN 12/ 12 BTL | ABOVE PREMIUM | 2 | Front | 16 |

| | | | | |
|-----------|-------------|------------|----------------------|--------------------|
| Name: 4_2 | W:384.00 in | D:20.00 in | Avail Space: 3.21 in | Ht Space: 11.00 in |
|-----------|-------------|------------|----------------------|--------------------|

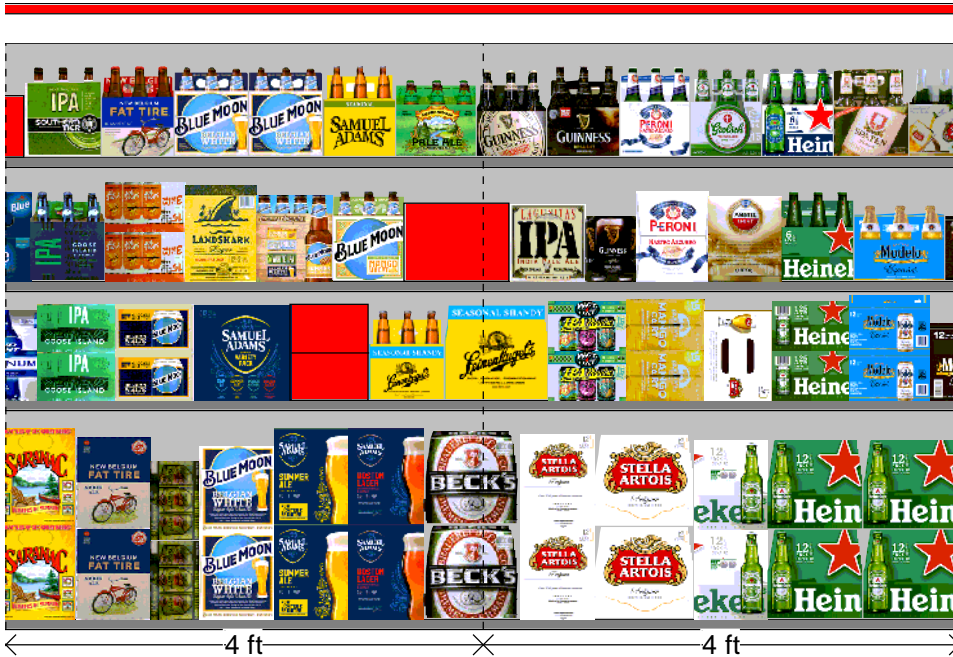
| ID | UPC | Name | Category | HFacings | Orientation | Units |
|-------|-------------|-----------------------------------|---------------|----------|-------------|-------|
| 58827 | 73692011651 | GOOSE ISLAND IPA 15/ 12 CAN | ABOVE PREMIUM | 1 | Side 90 | 2 |
| 63851 | 7199017052 | BLUE MOON BELGIAN WHITE 15... | ABOVE PREMIUM | 1 | Side 90 | 2 |
| 21988 | 8769229103 | SAMUEL ADAMS VARIETY PACK... | ABOVE PREMIUM | 1 | Front | 2 |
| 75134 | 68174500134 | BLUE POINT TOASTED LAGER 1... | ABOVE PREMIUM | 1 | Side 90 | 2 |
| 3492 | 3410051605 | LEINIES SEASONAL SHANDY 6/ ... | ABOVE PREMIUM | 1 | Front | 4 |
| 3494 | 3410051607 | LEINIES SEASONAL SHANDY 12... | ABOVE PREMIUM | 1 | Front | 2 |
| 54416 | 79837330085 | MAGIC HAT IPA PLATLIST 15/ 12 ... | ABOVE PREMIUM | 1 | Side 90 | 2 |
| 81206 | 81062803000 | GOLDEN ROAD MANGO CART 1... | ABOVE PREMIUM | 1 | Side 90 | 2 |
| 14096 | 78615000016 | STELLA ARTOIS 12/ 11.2 CAN | ABOVE PREMIUM | 1 | Top 90 | 3 |
| 11301 | 7289000020 | HEINEKEN 12/ 12 CAN | ABOVE PREMIUM | 1 | Side 90 | 4 |
| 15429 | 8066095715 | MODELO ESPECIAL 12/ 12 CAN | ABOVE PREMIUM | 1 | Side 90 | 3 |

| | | | | |
|-----------|-------------|------------|----------------------|--------------------|
| Name: 4_3 | W:384.00 in | D:20.00 in | Avail Space: 1.30 in | Ht Space: 11.50 in |
|-----------|-------------|------------|----------------------|--------------------|

| ID | UPC | Name | Category | HFacings | Orientation | Units |
|-------|-------------|-------------------------------|---------------|----------|-------------|-------|
| 11951 | 73692011132 | GOOSE ISLAND IPA 6/ 12 BTL | ABOVE PREMIUM | 1 | Front | 4 |
| 1620 | 1820028156 | SHOCK TOP BELGIAN WHITE 15... | ABOVE PREMIUM | 1 | Side 90 | 2 |
| 1341 | 1820012998 | LANDSHARK 12/ 12 BTL | ABOVE PREMIUM | 1 | Side | 2 |
| 10202 | 7199009554 | BLUE MOON BREWMASTER VA... | ABOVE PREMIUM | 1 | Side | 2 |
| 62048 | 7199009561 | BLUE MOON MANGO WHEAT 6/ ... | ABOVE PREMIUM | 1 | Front | 4 |
| 48655 | 85961200129 | 21ST AMENDMENT VARIETY PA... | ABOVE PREMIUM | 1 | Front | 4 |
| 10870 | 72383010009 | LAGUNITAS IPA 12/ 12 BTL | ABOVE PREMIUM | 1 | Side | 2 |
| 17293 | 8382012360 | GUINNESS DRAUGHT STOUT 4/ ... | ABOVE PREMIUM | 1 | Front | 4 |
| 570 | 18195400004 | PERONI 12/ 11.2 BTL | ABOVE PREMIUM | 1 | Side | 2 |
| 11384 | 7289010016 | AMSTEL LIGHT 12/ 12 BTL | ABOVE PREMIUM | 1 | Side | 2 |
| 11298 | 7289000011 | HEINEKEN 6/ 12 BTL | ABOVE PREMIUM | 1 | Front | 4 |
| 15442 | 8066095765 | MODELO ESPECIAL 6/ 12 BTL | ABOVE PREMIUM | 1 | Front | 3 |

| | | | | |
|-----------|-------------|------------|----------------------|--------------------|
| Name: 4_4 | W:384.00 in | D:20.00 in | Avail Space: 1.30 in | Ht Space: 14.50 in |
|-----------|-------------|------------|----------------------|--------------------|

| ID | UPC | Name | Category | HFacings | Orientation | Units |
|-------|-------------|---------------------------------|---------------|----------|-------------|-------|
| 19124 | 85375900012 | SOUTHERN TIER IPA 6/ 12 BTL | ABOVE PREMIUM | 1 | Front | 3 |
| 13009 | 75452700022 | NEW BELGIUM FAT TIRE 6/ 12 B... | ABOVE PREMIUM | 1 | Front | 4 |
| 10180 | 7199009511 | BLUE MOON BELGIAN WHITE 6/ ... | ABOVE PREMIUM | 2 | Front | 8 |
| 21995 | 8769230050 | SAMUEL ADAMS SEASONAL 6/ 1... | ABOVE PREMIUM | 1 | Front | 4 |
| 17212 | 8378337521 | SIERRA NEVADA PALE ALE 6/ 12... | ABOVE PREMIUM | 1 | Front | 3 |
| 17305 | 8382012393 | GUINNESS EXTRA STOUT 6/ 12 ... | ABOVE PREMIUM | 1 | Front | 4 |
| 17284 | 8382010401 | GUINNESS DRAUGHT STOUT 6/ ... | ABOVE PREMIUM | 1 | Front | 4 |



← 4 ft × 4 ft →

SHOPRITE_227

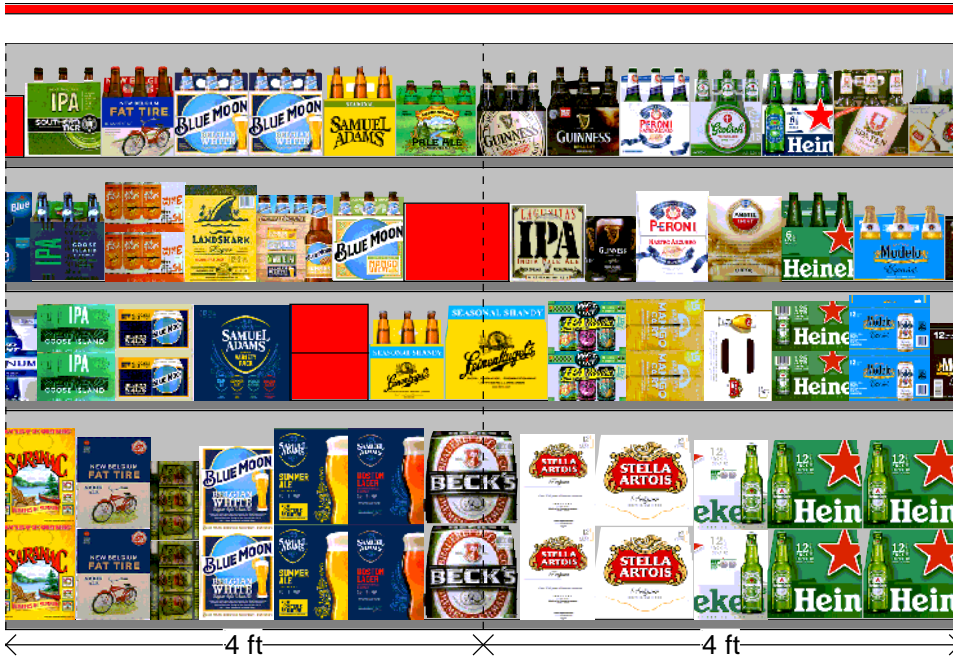
Store # 227

Cooler Size: WAKEFERN FOOD CORP/HQ

Address: 46 THOMPSON SQ

MONTICELLO , NY

| | | | | | | |
|-------|-------------|----------------------------------|---------------|---|-------|---|
| 568 | 18195400002 | PERONI 6/ 11.2 BTL | ABOVE PREMIUM | 1 | Front | 4 |
| 17107 | 8374100005 | GROLSCH 6/ 11.2 BTL | ABOVE PREMIUM | 1 | Front | 4 |
| 89681 | 7289000621 | HEINEKEN 0.0 NEAR BEER 6/ 12 ... | ABOVE PREMIUM | 1 | Front | 4 |
| 22473 | 8839400002 | SPATEN PREMIUM LAGER 6/ 12 ... | ABOVE PREMIUM | 1 | Front | 3 |
| 14089 | 7861500001 | STELLA ARTOIS 6/ 11.2 BTL | ABOVE PREMIUM | 1 | Front | 4 |



SHOPRITE_227

Store # 227

Cooler Size: WAKEFERN FOOD CORP/HQ

Address: 46 THOMPSON SQ

MONTICELLO , NY

| | | | | | |
|--------------|-------------|------------------|----------|---------|------------------|
| SHOPRITE_227 | Store # 227 | H: 4 ft 11.00 in | W: 32 ft | D: 2 ft | # of segments: 8 |
|--------------|-------------|------------------|----------|---------|------------------|

| | | | | |
|---------------------|-------------|------------|------------------------|--------------------|
| Name: Deleted Items | W:384.00 in | D:24.00 in | Avail Space: 384.00 in | Ht Space: 14.00 in |
|---------------------|-------------|------------|------------------------|--------------------|

| | | | | |
|-----------|-------------|------------|----------------------|--------------------|
| Name: 4_1 | W:384.00 in | D:32.00 in | Avail Space: 1.26 in | Ht Space: 21.00 in |
|-----------|-------------|------------|----------------------|--------------------|

| ID | UPC | Name | Category | HFacings | Orientation | Units |
|-------|-------------|---------------------------------|---------------|----------|-------------|-------|
| 15436 | 8066095757 | MODELO ESPECIAL 12/ 12 BTL | ABOVE PREMIUM | 1 | Side | 4 |
| 15416 | 8066095675 | CORONA LIGHT 12/ 12 BTL | ABOVE PREMIUM | 1 | Side | 6 |
| 15403 | 8066095615 | CORONA 12/ 12 BTL | ABOVE PREMIUM | 1 | Front | 8 |
| 15403 | 8066095615 | CORONA 12/ 12 BTL | ABOVE PREMIUM | 2 | Front | 16 |
| 21823 | 8769200033 | ANGRY ORCHARD CRISP APPLE... | ABOVE PREMIUM | 1 | Side | 6 |
| 21815 | 8769200017 | ANGRY ORCHARD EXPLORER P... | ABOVE PREMIUM | 1 | Side | 6 |
| 6433 | 63598512998 | MIKES HARD VARIETY PACK 12/ ... | ABOVE PREMIUM | 1 | Side | 6 |
| 65025 | 63598526042 | MIKES HARDER VARIETY PACK ... | ABOVE PREMIUM | 1 | Side 90 | 9 |
| 43031 | 8769200424 | TRULY VARIETY CITRUS 12/ 12 ... | ABOVE PREMIUM | 1 | Side 90 | 9 |
| 65035 | 8769200686 | TRULY VARIETY BERRY 12/ 12 C... | ABOVE PREMIUM | 1 | Side 90 | 9 |
| 45151 | 63598554890 | WHITE CLAW VARIETY PACK 12... | ABOVE PREMIUM | 1 | Side 90 | 9 |

| | | | | |
|-----------|-------------|------------|----------------------|--------------------|
| Name: 4_2 | W:384.00 in | D:20.00 in | Avail Space: 3.21 in | Ht Space: 11.00 in |
|-----------|-------------|------------|----------------------|--------------------|

| ID | UPC | Name | Category | HFacings | Orientation | Units |
|-------|-------------|----------------------------------|---------------|----------|-------------|-------|
| 15449 | 8066095787 | MODELO NEGRA 12/ 12 BTL | ABOVE PREMIUM | 1 | Side | 1 |
| 15417 | 8066095680 | CORONA 18/ 12 BTL | ABOVE PREMIUM | 1 | Side | 1 |
| 15426 | 8066095695 | CORONA 12/ 12 CAN | ABOVE PREMIUM | 1 | Side 90 | 2 |
| 86777 | 3354400013 | CORONA REFRESCA VARIETY 1... | ABOVE PREMIUM | 1 | Top 90 | 3 |
| 84117 | 89413700268 | CRISPIN VARIETY PACK 12/ 12 C... | ABOVE PREMIUM | 1 | Front 90 | 3 |
| 65019 | 8769200660 | ANGRY ORCHARD ROSE 6/ 12 B... | ABOVE PREMIUM | 1 | Front | 4 |
| 22090 | 8769282102 | ANGRY ORCHARD CRISP APPLE... | ABOVE PREMIUM | 1 | Front | 4 |
| 22096 | 8769283134 | TWISTED TEA ORIGINAL 12/ 12 ... | ABOVE PREMIUM | 1 | Top 90 | 2 |
| 86818 | 1820020130 | RITAS SPRITZ VARIETY PACK 1... | ABOVE PREMIUM | 1 | Front 90 | 3 |
| 1464 | 1820020993 | BUD LIGHT LIME STRAW-BER-R... | ABOVE PREMIUM | 1 | Top 90 | 3 |
| 73277 | 3354495076 | SVEDKA SPARKLING SELTZER ... | ABOVE PREMIUM | 1 | Top 90 | 3 |
| 15329 | 8043280290 | SEAGRAMS ESCAPES VARIETY ... | ABOVE PREMIUM | 1 | Side | 2 |
| 45535 | 8200078142 | SMIRNOFF SPIKED SPARKLING ... | ABOVE PREMIUM | 1 | Top 90 | 3 |
| 83125 | 63598526089 | WHITE CLAW BLACK CHERRY 1... | ABOVE PREMIUM | 1 | Top 90 | 3 |

| | | | | |
|-----------|-------------|------------|----------------------|--------------------|
| Name: 4_3 | W:384.00 in | D:20.00 in | Avail Space: 1.30 in | Ht Space: 11.50 in |
|-----------|-------------|------------|----------------------|--------------------|

| ID | UPC | Name | Category | HFacings | Orientation | Units |
|-------|-------------|----------------------------------|---------------|----------|-------------|-------|
| 15448 | 8066095785 | MODELO NEGRA 6/ 12 BTL | ABOVE PREMIUM | 1 | Front | 3 |
| 44952 | 3354495042 | CORONA PREMIER 12/ 12 BTL | ABOVE PREMIUM | 2 | Side | 4 |
| 15408 | 8066095625 | CORONA LIGHT 6/ 12 BTL | ABOVE PREMIUM | 1 | Front | 3 |
| 22457 | 8834510151 | STRONGBOW GOLD 6/ 11.2 BTL | ABOVE PREMIUM | 1 | Front | 4 |
| 21939 | 8769200433 | ANGRY ORCHARD EASY APPLE ... | ABOVE PREMIUM | 1 | Front | 4 |
| 6398 | 63598506074 | MIKES HARD SEASONAL 6/ 11.2 ... | ABOVE PREMIUM | 1 | Front | 4 |
| 22092 | 8769283102 | TWISTED TEA ORIGINAL 6/ 12 B... | ABOVE PREMIUM | 1 | Front | 4 |
| 68928 | 61300875220 | ARNOLD PALMER SPIKED HALF ... | ABOVE PREMIUM | 1 | Top 90 | 3 |
| 16280 | 8200072751 | SMIRNOFF ICE GREEN APPLE BL... | ABOVE PREMIUM | 1 | Front | 4 |
| 16354 | 8200074784 | SMIRNOFF ICE PINEAPPLE 6/ 11... | ABOVE PREMIUM | 1 | Front | 4 |
| 86788 | 3410051681 | CAPE LINE VARIETY PACK 12/ 12... | ABOVE PREMIUM | 1 | Front 90 | 3 |
| 63326 | 3410051660 | HENRY'S HARD SPARKLING VA... | ABOVE PREMIUM | 1 | Top 90 | 3 |

| | | | | |
|-----------|-------------|------------|----------------------|--------------------|
| Name: 4_4 | W:384.00 in | D:20.00 in | Avail Space: 1.30 in | Ht Space: 14.50 in |
|-----------|-------------|------------|----------------------|--------------------|

| ID | UPC | Name | Category | HFacings | Orientation | Units |
|-------|------------|-------------------------------|---------------|----------|-------------|-------|
| 15400 | 8066095605 | CORONA 6/ 12 BTL | ABOVE PREMIUM | 2 | Front | 6 |
| 44964 | 3354495041 | CORONA PREMIER 6/ 12 BTL | ABOVE PREMIUM | 1 | Front | 3 |
| 1517 | 1820024001 | STELLA ARTOIS CIDRE 6/ 12 BTL | ABOVE PREMIUM | 1 | Front | 4 |
| 65039 | 8834510201 | STRONGBOW ROSE 6/ 11.2 BTL | ABOVE PREMIUM | 1 | Front | 4 |



SHOPRITE_227

Store # 227

Cooler Size: WAKEFERN FOOD CORP/HQ

Address: 46 THOMPSON SQ

MONTICELLO , NY

| | | | | | | |
|-------|-------------|----------------------------------|---------------|---|----------|---|
| 6402 | 63598506744 | MIKES HARD BLACK CHERRY L... | ABOVE PREMIUM | 1 | Front | 4 |
| 6413 | 63598510062 | MIKES HARD LEMONADE 6/ 11.2... | ABOVE PREMIUM | 1 | Front | 4 |
| 16304 | 8200073214 | SMIRNOFF ICE WILD GRAPE 6/ 1... | ABOVE PREMIUM | 1 | Front | 4 |
| 16283 | 8200072754 | SMIRNOFF ICE RASPBERRY BU... | ABOVE PREMIUM | 1 | Front | 4 |
| 89181 | 7031001542 | PURA STILL BLACKBERRY 6/ 12 ... | ABOVE PREMIUM | 1 | Front | 3 |
| 19178 | 85389700227 | BON AND VIV SPIKED SELTZER ... | ABOVE PREMIUM | 1 | Front 90 | 2 |
| 89569 | 3410051680 | CAPE LINE VARIETY PACK 6/ 12 ... | ABOVE PREMIUM | 1 | Side | 2 |
| 83884 | 63598526087 | WHITE CLAW MANGO 6/ 12 CAN | ABOVE PREMIUM | 1 | Front | 4 |



SHOPRITE_227

Store # 227

SHOPRITE_227 Store # 227 H: 4 ft 11.00 in W: 32 ft D: 2 ft # of segments: 8

Name: Deleted Items W:384.00 in D:24.00 in Avail Space: 384.00 in Ht Space: 14.00 in

Name: Added Items W:6.19 in D:24.00 in Avail Space: 0.00 in Ht Space: 0.00 in

| ID | UPC | Name | Category | HFacings | Orientation | Units |
|------|------------|--------------------------|---------------|----------|-------------|-------|
| 1849 | 1820096715 | MICHELOB ULTRA 24/12 CAN | ABOVE PREMIUM | 1 | Side | 1 |

Name: 4_1 W:384.00 in D:32.00 in Avail Space: 1.26 in Ht Space: 21.00 in

| ID | UPC | Name | Category | HFacings | Orientation | Units |
|-------|-------------|--------------------------------|---------------|----------|-------------|-------|
| 61975 | 1820020077 | NATURAL LIGHT 15/12 CAN | ECONOMY | 1 | Side 90 | 8 |
| 61976 | 1820020078 | NATTY DADDY 15/12 CAN | ECONOMY | 1 | Side 90 | 8 |
| 92510 | 1820020133 | NATURDAYS 12/12 CAN | ECONOMY | 1 | Side | 6 |
| 10888 | 7248002403 | SCHAEFER 12/12 CAN | ECONOMY | 1 | Side | 6 |
| 8916 | 7031000012 | GENESEE CREAM ALE 30/12 C... | ECONOMY | 1 | Side | 4 |
| 45405 | 7199048045 | KEYSTONE LIGHT 15/12 CAN | ECONOMY | 1 | Top 90 | 4 |
| 52793 | 7199028151 | KEYSTONE ICE 15/12 CAN | ECONOMY | 1 | Side 90 | 6 |
| 1304 | 1820011168 | BUD 24/12 CAN | PREMIUM | 1 | Side 90 | 8 |
| 1310 | 1820011308 | BUD 18/12 BTL | PREMIUM | 1 | Side | 4 |
| 1312 | 1820011349 | BUD 24/12 BTL (HG) | PREMIUM | 1 | Side | 4 |
| 1670 | 1820053308 | BUD LIGHT 18/12 BTL | PREMIUM | 1 | Side | 4 |
| 1670 | 1820053308 | BUD LIGHT 18/12 BTL | PREMIUM | 1 | Side | 4 |
| 1672 | 1820053349 | BUD LIGHT 24/12 BTL (HG) | PREMIUM | 1 | Side | 4 |
| 3532 | 3410057256 | LITE 18/12 BTL | PREMIUM | 1 | Side | 4 |
| 3565 | 3410057509 | LITE 12/12 BTL | PREMIUM | 1 | Side | 6 |
| 10352 | 7199030078 | COORS LIGHT 18/12 BTL | PREMIUM | 2 | Side | 8 |
| 10353 | 7199030079 | COORS LIGHT 24/12 BTL (HG) | PREMIUM | 1 | Side | 4 |
| 10329 | 7199030017 | COORS LIGHT 18/12 CAN | PREMIUM | 1 | Front 90 | 6 |
| 23902 | 8992427896 | YUENGLING LAGER 12/12 BTL | PREMIUM | 2 | Side | 12 |
| 23909 | 8992429386 | YUENGLING BLACK AND TAN 1... | PREMIUM | 1 | Side | 6 |
| 1830 | 1820096624 | MICHELOB ULTRA 18/12 BTL | ABOVE PREMIUM | 1 | Side | 4 |
| 1850 | 1820096721 | MICHELOB ULTRA 18/12 CAN | ABOVE PREMIUM | 1 | Side 90 | 6 |
| 1356 | 1820014990 | BUD LIGHT LIME 12/12 BTL | ABOVE PREMIUM | 1 | Side | 6 |
| 10031 | 7167007106 | SARANAC 12 BEERS 12/12 BTL | ABOVE PREMIUM | 1 | Side | 6 |
| 13010 | 75452700024 | NEW BELGIUM FAT TIRE 12/12 ... | ABOVE PREMIUM | 1 | Side | 6 |
| 7044 | 64286090024 | FOUNDERS ALL DAY SESSION ... | ABOVE PREMIUM | 1 | Side | 4 |
| 10183 | 7199009516 | BLUE MOON BELGIAN WHITE 1... | ABOVE PREMIUM | 1 | Side | 6 |
| 21940 | 8769201103 | SAMUEL ADAMS SEASONAL 12... | ABOVE PREMIUM | 1 | Side | 6 |
| 21957 | 8769210014 | SAMUEL ADAMS BOSTON LAG... | ABOVE PREMIUM | 1 | Side | 6 |
| 16691 | 8248812300 | BECKS 12/12 BTL | ABOVE PREMIUM | 1 | Front | 8 |
| 14094 | 78615000014 | STELLA ARTOIS 12/11.2 BTL | ABOVE PREMIUM | 1 | Side | 6 |
| 14094 | 78615000014 | STELLA ARTOIS 12/11.2 BTL | ABOVE PREMIUM | 1 | Front | 8 |
| 11342 | 7289000159 | HEINEKEN LIGHT 12/12 BTL | ABOVE PREMIUM | 1 | Side | 6 |
| 11300 | 7289000016 | HEINEKEN 12/12 BTL | ABOVE PREMIUM | 2 | Front | 16 |
| 15436 | 8066095757 | MODELO ESPECIAL 12/12 BTL | ABOVE PREMIUM | 1 | Side | 4 |
| 15416 | 8066095675 | CORONA LIGHT 12/12 BTL | ABOVE PREMIUM | 1 | Side | 6 |
| 15403 | 8066095615 | CORONA 12/12 BTL | ABOVE PREMIUM | 1 | Front | 8 |
| 15403 | 8066095615 | CORONA 12/12 BTL | ABOVE PREMIUM | 2 | Front | 16 |
| 21823 | 8769200033 | ANGRY ORCHARD CRISP APPL... | ABOVE PREMIUM | 1 | Side | 6 |
| 21815 | 8769200017 | ANGRY ORCHARD EXPLORER ... | ABOVE PREMIUM | 1 | Side | 6 |
| 6433 | 63598512998 | MIKES HARD VARIETY PACK 12... | ABOVE PREMIUM | 1 | Side | 6 |
| 65025 | 63598526042 | MIKES HARDER VARIETY PACK... | ABOVE PREMIUM | 1 | Side 90 | 9 |
| 43031 | 8769200424 | TRULY VARIETY CITRUS 12/12 ... | ABOVE PREMIUM | 1 | Side 90 | 9 |
| 65035 | 8769200686 | TRULY VARIETY BERRY 12/12 C... | ABOVE PREMIUM | 1 | Side 90 | 9 |
| 45151 | 63598554890 | WHITE CLAW VARIETY PACK 12... | ABOVE PREMIUM | 1 | Side 90 | 9 |

Name: 4_2 W:384.00 in D:20.00 in Avail Space: 3.21 in Ht Space: 11.00 in

SHOPRITE_227

Store # 227

| ID | UPC | Name | Category | HFacings | Orientation | Units |
|-------|-------------|---------------------------------|---------------|----------|-------------|-------|
| 13877 | 7825000328 | STEEL RESERVE 211 1/24 CAN | ECONOMY | 2 | Front | 14 |
| 1522 | 1820025002 | NATURAL LIGHT 1/25 CAN | ECONOMY | 2 | Front | 14 |
| 1533 | 1820025013 | NATTY DADDY 1/25 CAN | ECONOMY | 6 | Front | 42 |
| 1528 | 1820025008 | NATURAL ICE 1/25 CAN | ECONOMY | 2 | Front | 14 |
| 2326 | 2210011219 | PABST 30/12 CAN | ECONOMY | 1 | Side | 1 |
| 3193 | 3410001341 | HIGH LIFE 30/12 CAN | ECONOMY | 1 | Side | 1 |
| 9886 | 7143934450 | ROLLING ROCK 12/12 CAN | ECONOMY | 1 | Side 90 | 4 |
| 1307 | 1820011218 | BUD 18/12 CAN | PREMIUM | 2 | Side 90 | 4 |
| 1664 | 1820053168 | BUD LIGHT 24/12 CAN | PREMIUM | 1 | Top | 4 |
| 1667 | 1820053218 | BUD LIGHT 18/12 CAN | PREMIUM | 1 | Top | 4 |
| 3541 | 3410057306 | LITE 24/12 CAN | PREMIUM | 2 | Side | 2 |
| 10380 | 7199031600 | COORS LIGHT 24/12 CAN | PREMIUM | 3 | Side 90 | 6 |
| 23915 | 8992441003 | YUENGLING LAGER 24/12 BTL | PREMIUM | 2 | Side | 2 |
| 65828 | 1820020083 | MICHELOB ULTRA PURE GOLD... | ABOVE PREMIUM | 1 | Side | 2 |
| 1849 | 1820096715 | MICHELOB ULTRA 24/12 CAN | ABOVE PREMIUM | 1 | Front | 3 |
| 1428 | 1820018992 | BUD LIGHT PLATINUM 12/12 BTL | ABOVE PREMIUM | 1 | Side | 2 |
| 58827 | 73692011651 | GOOSE ISLAND IPA 15/12 CAN | ABOVE PREMIUM | 1 | Side 90 | 2 |
| 63851 | 7199017052 | BLUE MOON BELGIAN WHITE 1... | ABOVE PREMIUM | 1 | Side 90 | 2 |
| 21988 | 8769229103 | SAMUEL ADAMS VARIETY PAC... | ABOVE PREMIUM | 1 | Front | 2 |
| 75134 | 68174500134 | BLUE POINT TOASTED LAGER ... | ABOVE PREMIUM | 1 | Side 90 | 2 |
| 3492 | 3410051605 | LEINIES SEASONAL SHANDY 6/... | ABOVE PREMIUM | 1 | Front | 4 |
| 3494 | 3410051607 | LEINIES SEASONAL SHANDY 1... | ABOVE PREMIUM | 1 | Front | 2 |
| 54416 | 79837330085 | MAGIC HAT IPA PLATLIST 15/12... | ABOVE PREMIUM | 1 | Side 90 | 2 |
| 81206 | 81062803000 | GOLDEN ROAD MANGO CART ... | ABOVE PREMIUM | 1 | Side 90 | 2 |
| 14096 | 78615000016 | STELLA ARTOIS 12/11.2 CAN | ABOVE PREMIUM | 1 | Top 90 | 3 |
| 11301 | 72890000020 | HEINEKEN 12/12 CAN | ABOVE PREMIUM | 1 | Side 90 | 4 |
| 15429 | 8066095715 | MODELO ESPECIAL 12/12 CAN | ABOVE PREMIUM | 1 | Side 90 | 3 |
| 15449 | 8066095787 | MODELO NEGRA 12/12 BTL | ABOVE PREMIUM | 1 | Side | 1 |
| 15417 | 8066095680 | CORONA 18/12 BTL | ABOVE PREMIUM | 1 | Side | 1 |
| 15426 | 8066095695 | CORONA 12/12 CAN | ABOVE PREMIUM | 1 | Side 90 | 2 |
| 86777 | 3354400013 | CORONA REFRESCA VARIETY ... | ABOVE PREMIUM | 1 | Top 90 | 3 |
| 84117 | 89413700268 | CRISPIN VARIETY PACK 12/12 C... | ABOVE PREMIUM | 1 | Front 90 | 3 |
| 65019 | 8769200660 | ANGRY ORCHARD ROSE 6/12 B... | ABOVE PREMIUM | 1 | Front | 4 |
| 22090 | 8769282102 | ANGRY ORCHARD CRISP APPL... | ABOVE PREMIUM | 1 | Front | 4 |
| 22096 | 8769283134 | TWISTED TEA ORIGINAL 12/12 ... | ABOVE PREMIUM | 1 | Top 90 | 2 |
| 86818 | 1820020130 | RITAS SPRITZ VARIETY PACK 1... | ABOVE PREMIUM | 1 | Front 90 | 3 |
| 1464 | 1820020993 | BUD LIGHT LIME STRAW-BER... | ABOVE PREMIUM | 1 | Top 90 | 3 |
| 73277 | 3354495076 | SVEDKA SPARKLING SELTZER ... | ABOVE PREMIUM | 1 | Top 90 | 3 |
| 15329 | 8043280290 | SEAGRAMS ESCAPES VARIETY... | ABOVE PREMIUM | 1 | Side | 2 |
| 45535 | 8200078142 | SMIRNOFF SPIKED SPARKLING... | ABOVE PREMIUM | 1 | Top 90 | 3 |
| 83125 | 63598526089 | WHITE CLAW BLACK CHERRY ... | ABOVE PREMIUM | 1 | Top 90 | 3 |

Name: 4_3 W:384.00 in D:20.00 in Avail Space: 1.30 in Ht Space: 11.50 in

| ID | UPC | Name | Category | HFacings | Orientation | Units |
|-------|------------|-------------------------------|----------|----------|-------------|-------|
| 10412 | 7199047712 | KEYSTONE ICE 1/24 CAN | ECONOMY | 2 | Front | 14 |
| 10436 | 7199048024 | KEYSTONE LIGHT 1/24 CAN | ECONOMY | 2 | Front | 14 |
| 3128 | 3410000820 | MILWAUKEES BEST ICE 1/24 C... | ECONOMY | 2 | Front | 14 |
| 1521 | 1820025001 | BUD LIGHT 1/25 CAN | PREMIUM | 2 | Front | 14 |
| 1520 | 1820025000 | BUD 1/25 CAN | PREMIUM | 2 | Front | 14 |
| 10346 | 7199030065 | COORS LIGHT 1/24 CAN | PREMIUM | 2 | Front | 14 |
| 2241 | 2210000170 | PABST 12/12 CAN | ECONOMY | 1 | Side 90 | 4 |
| 3198 | 3410001509 | HIGH LIFE 12/12 BTL | ECONOMY | 1 | Side | 2 |
| 9905 | 7143945712 | ROLLING ROCK 12/12 BTL | ECONOMY | 1 | Side | 2 |
| 1058 | 1820000771 | BUD 12/12 BTL | PREMIUM | 1 | Side | 2 |
| 1297 | 1820011047 | BUD 12/12 CAN | PREMIUM | 1 | Side 90 | 4 |
| 1056 | 1820000769 | BUD LIGHT 12/12 BTL | PREMIUM | 1 | Side | 2 |
| 1659 | 1820053047 | BUD LIGHT 12/12 CAN | PREMIUM | 2 | Top | 8 |

SHOPRITE_227

Store # 227

| | | | | | | |
|-------|-------------|--------------------------------|---------------|---|----------|---|
| 3552 | 3410057340 | LITE 18/12 CAN | PREMIUM | 1 | Side 90 | 2 |
| 10234 | 7199010020 | COORS BANQUET 18/12 CAN | PREMIUM | 1 | Side 90 | 2 |
| 10348 | 7199030069 | COORS LIGHT 12/12 BTL | PREMIUM | 2 | Side | 4 |
| 10164 | 7199000048 | COORS LIGHT 12/12 CAN | PREMIUM | 2 | Side 90 | 8 |
| 68457 | 8992433125 | YUENGLING GOLDEN PILSNER ... | PREMIUM | 1 | Front | 2 |
| 69618 | 1820020080 | BUD LIGHT ORANGE 12/12 BTL | ABOVE PREMIUM | 1 | Side | 2 |
| 58373 | 1820020019 | MICHELOB ULTRA LIME CACTU... | ABOVE PREMIUM | 1 | Side | 2 |
| 1241 | 1820006991 | MICHELOB ULTRA 12/12 CAN | ABOVE PREMIUM | 1 | Top 90 | 3 |
| 1228 | 1820005990 | MICHELOB ULTRA 12/12 BTL | ABOVE PREMIUM | 1 | Front | 2 |
| 5922 | 6206705155 | LABATT BLUE 12/11.5 BTL | ABOVE PREMIUM | 1 | Side | 2 |
| 11951 | 73692011132 | GOOSE ISLAND IPA 6/12 BTL | ABOVE PREMIUM | 1 | Front | 4 |
| 1620 | 1820028156 | SHOCK TOP BELGIAN WHITE 1... | ABOVE PREMIUM | 1 | Side 90 | 2 |
| 1341 | 1820012998 | LANDSHARK 12/12 BTL | ABOVE PREMIUM | 1 | Side | 2 |
| 10202 | 7199009554 | BLUE MOON BREWMASTER VA... | ABOVE PREMIUM | 1 | Side | 2 |
| 62048 | 7199009561 | BLUE MOON MANGO WHEAT 6/... | ABOVE PREMIUM | 1 | Front | 4 |
| 48655 | 85961200129 | 21ST AMENDMENT VARIETY PA... | ABOVE PREMIUM | 1 | Front | 4 |
| 10870 | 72383010009 | LAGUNITAS IPA 12/12 BTL | ABOVE PREMIUM | 1 | Side | 2 |
| 17293 | 8382012360 | GUINNESS DRAUGHT STOUT 4/... | ABOVE PREMIUM | 1 | Front | 4 |
| 570 | 18195400004 | PERONI 12/11.2 BTL | ABOVE PREMIUM | 1 | Side | 2 |
| 11384 | 7289010016 | AMSTEL LIGHT 12/12 BTL | ABOVE PREMIUM | 1 | Side | 2 |
| 11298 | 7289000011 | HEINEKEN 6/12 BTL | ABOVE PREMIUM | 1 | Front | 4 |
| 15442 | 8066095765 | MODELO ESPECIAL 6/12 BTL | ABOVE PREMIUM | 1 | Front | 3 |
| 15448 | 8066095785 | MODELO NEGRA 6/12 BTL | ABOVE PREMIUM | 1 | Front | 3 |
| 44952 | 3354495042 | CORONA PREMIER 12/12 BTL | ABOVE PREMIUM | 2 | Side | 4 |
| 15408 | 8066095625 | CORONA LIGHT 6/12 BTL | ABOVE PREMIUM | 1 | Front | 3 |
| 22457 | 8834510151 | STRONGBOW GOLD 6/11.2 BTL | ABOVE PREMIUM | 1 | Front | 4 |
| 21939 | 8769200433 | ANGRY ORCHARD EASY APPL... | ABOVE PREMIUM | 1 | Front | 4 |
| 6398 | 63598506074 | MIKES HARD SEASONAL 6/11.2 ... | ABOVE PREMIUM | 1 | Front | 4 |
| 22092 | 8769283102 | TWISTED TEA ORIGINAL 6/12 B... | ABOVE PREMIUM | 1 | Front | 4 |
| 68928 | 61300875220 | ARNOLD PALMER SPIKED HAL... | ABOVE PREMIUM | 1 | Top 90 | 3 |
| 16280 | 8200072751 | SMIRNOFF ICE GREEN APPLE ... | ABOVE PREMIUM | 1 | Front | 4 |
| 16354 | 8200074784 | SMIRNOFF ICE PINEAPPLE 6/11... | ABOVE PREMIUM | 1 | Front | 4 |
| 86788 | 3410051681 | CAPE LINE VARIETY PACK 12/1... | ABOVE PREMIUM | 1 | Front 90 | 3 |
| 63326 | 3410051660 | HENRYS HARD SPARKLING VA... | ABOVE PREMIUM | 1 | Top 90 | 3 |

| Name: 4_4 | | W:384.00 in | D:20.00 in | Avail Space: 1.30 in | Ht Space: 14.50 in | | |
|-----------|-------------|------------------------------|---------------|----------------------|--------------------|-------|--|
| ID | UPC | Name | Category | HFacings | Orientation | Units | |
| 9488 | 7089718331 | FOSTERS PREMIUM 1/25.4 CAN | ABOVE PREMIUM | 2 | Side | 12 | |
| 9452 | 7089701331 | FOSTERS 1/25.4 CAN | ABOVE PREMIUM | 2 | Front | 12 | |
| 89609 | 72383001192 | LAGUNITAS IPA 1/19.2 CAN | ABOVE PREMIUM | 2 | Front | 14 | |
| 43248 | 64286013024 | FOUNDERS ALL DAY SESSION ... | ABOVE PREMIUM | 2 | Front | 14 | |
| 66037 | 78615000170 | STELLA ARTOIS 1/19.2 CAN | ABOVE PREMIUM | 2 | Side | 14 | |
| 1530 | 1820025010 | MICHELOB ULTRA 1/25 CAN | ABOVE PREMIUM | 2 | Front | 12 | |
| 10243 | 7199010071 | COORS BANQUET 1/24 CAN | PREMIUM | 3 | Front | 18 | |
| 624 | 1820000063 | BUSCH 6/16 CAN | ECONOMY | 2 | Front | 6 | |
| 1065 | 1820000784 | ODOULS NEAR BEER 6/12 BTL | NA BEER | 1 | Front | 3 | |
| 1084 | 1820000834 | BUD 6/12 BTL | PREMIUM | 1 | Front | 3 | |
| 587 | 1820000016 | BUD 6/12 CAN | PREMIUM | 1 | Side | 4 | |
| 1083 | 1820000833 | BUD LIGHT 6/12 BTL | PREMIUM | 1 | Front | 3 | |
| 3579 | 3410057636 | LITE 12/12 CAN | PREMIUM | 1 | Front | 4 | |
| 10322 | 7199030005 | COORS LIGHT 6/12 BTL | PREMIUM | 1 | Front | 4 | |
| 10155 | 7199000008 | COORS LIGHT 6/12 CAN | PREMIUM | 1 | Front | 6 | |
| 10374 | 7199030125 | COORS LIGHT 12/8 CAN | PREMIUM | 1 | Front | 5 | |
| 23929 | 8992495432 | YUENGLING BLACK AND TAN 6... | PREMIUM | 1 | Front | 3 | |
| 23900 | 8992427891 | YUENGLING LAGER 6/12 BTL | PREMIUM | 1 | Front | 3 | |
| 23903 | 8992427898 | YUENGLING LAGER 12/12 CAN | PREMIUM | 2 | Side 90 | 4 | |
| 1227 | 1820005989 | MICHELOB ULTRA 6/12 BTL | ABOVE PREMIUM | 1 | Front | 3 | |
| 10452 | 7199070002 | KILLIANS IRISH RED 6/12 BTL | ABOVE PREMIUM | 1 | Front | 3 | |

SHOPRITE_227

Store # 227

| | | | | | | |
|-------|-------------|---------------------------------|---------------|---|----------|---|
| 52632 | 86326700005 | NEWBURGH MEGA BOSS 4/16 ... | ABOVE PREMIUM | 1 | Front | 3 |
| 2616 | 3061300001 | BROOKLYN LAGER 6/12 BTL | ABOVE PREMIUM | 1 | Front | 4 |
| 15961 | 81760601020 | CAPTAIN LAWRENCE IPA 6/12 ... | ABOVE PREMIUM | 1 | Front | 3 |
| 85208 | 81760601078 | CAPTAIN LAWRENCE SEASON... | ABOVE PREMIUM | 1 | Front | 3 |
| 19124 | 85375900012 | SOUTHERN TIER IPA 6/12 BTL | ABOVE PREMIUM | 1 | Front | 3 |
| 13009 | 75452700022 | NEW BELGIUM FAT TIRE 6/12 B... | ABOVE PREMIUM | 1 | Front | 4 |
| 10180 | 7199009511 | BLUE MOON BELGIAN WHITE 6... | ABOVE PREMIUM | 2 | Front | 8 |
| 21995 | 87692300050 | SAMUEL ADAMS SEASONAL 6/... | ABOVE PREMIUM | 1 | Front | 4 |
| 17212 | 8378337521 | SIERRA NEVADA PALE ALE 6/1... | ABOVE PREMIUM | 1 | Front | 3 |
| 17305 | 8382012393 | GUINNESS EXTRA STOUT 6/12 ... | ABOVE PREMIUM | 1 | Front | 4 |
| 17284 | 8382010401 | GUINNESS DRAUGHT STOUT 6/... | ABOVE PREMIUM | 1 | Front | 4 |
| 568 | 18195400002 | PERONI 6/11.2 BTL | ABOVE PREMIUM | 1 | Front | 4 |
| 17107 | 8374100005 | GROLSCH 6/11.2 BTL | ABOVE PREMIUM | 1 | Front | 4 |
| 89681 | 7289000621 | HEINEKEN 0.0 NEAR BEER 6/12... | ABOVE PREMIUM | 1 | Front | 4 |
| 22473 | 8839400002 | SPATEN PREMIUM LAGER 6/12 ... | ABOVE PREMIUM | 1 | Front | 3 |
| 14089 | 78615000001 | STELLA ARTOIS 6/11.2 BTL | ABOVE PREMIUM | 1 | Front | 4 |
| 15400 | 8066095605 | CORONA 6/12 BTL | ABOVE PREMIUM | 2 | Front | 6 |
| 44964 | 3354495041 | CORONA PREMIER 6/12 BTL | ABOVE PREMIUM | 1 | Front | 3 |
| 1517 | 1820024001 | STELLA ARTOIS CIDRE 6/12 BTL | ABOVE PREMIUM | 1 | Front | 4 |
| 65039 | 8834510201 | STRONGBOW ROSE 6/11.2 BTL | ABOVE PREMIUM | 1 | Front | 4 |
| 6402 | 63598506744 | MIKES HARD BLACK CHERRY ... | ABOVE PREMIUM | 1 | Front | 4 |
| 6413 | 63598510062 | MIKES HARD LEMONADE 6/11.2... | ABOVE PREMIUM | 1 | Front | 4 |
| 16304 | 8200073214 | SMIRNOFF ICE WILD GRAPE 6/... | ABOVE PREMIUM | 1 | Front | 4 |
| 16283 | 8200072754 | SMIRNOFF ICE RASPBERRY BU... | ABOVE PREMIUM | 1 | Front | 4 |
| 89181 | 7031001542 | PURA STILL BLACKBERRY 6/12... | ABOVE PREMIUM | 1 | Front | 3 |
| 19178 | 85389700227 | BON AND VIV SPIKED SELTZER... | ABOVE PREMIUM | 1 | Front 90 | 2 |
| 89569 | 3410051680 | CAPE LINE VARIETY PACK 6/12 ... | ABOVE PREMIUM | 1 | Side | 2 |
| 83884 | 63598526087 | WHITE CLAW MANGO 6/12 CAN | ABOVE PREMIUM | 1 | Front | 4 |

Shop Rite Assortment Worksheet

Name: 227_32ft_OPEN_COLD

Name: Added Items

| Name | UPC | Name | Unit movement | Recent Sales |
|-------------|------------|--------------------------|---------------|--------------|
| Added Items | 1820096715 | MICHELOB ULTRA 24/12 CAN | 0.000 | |

Name: Deleted Items