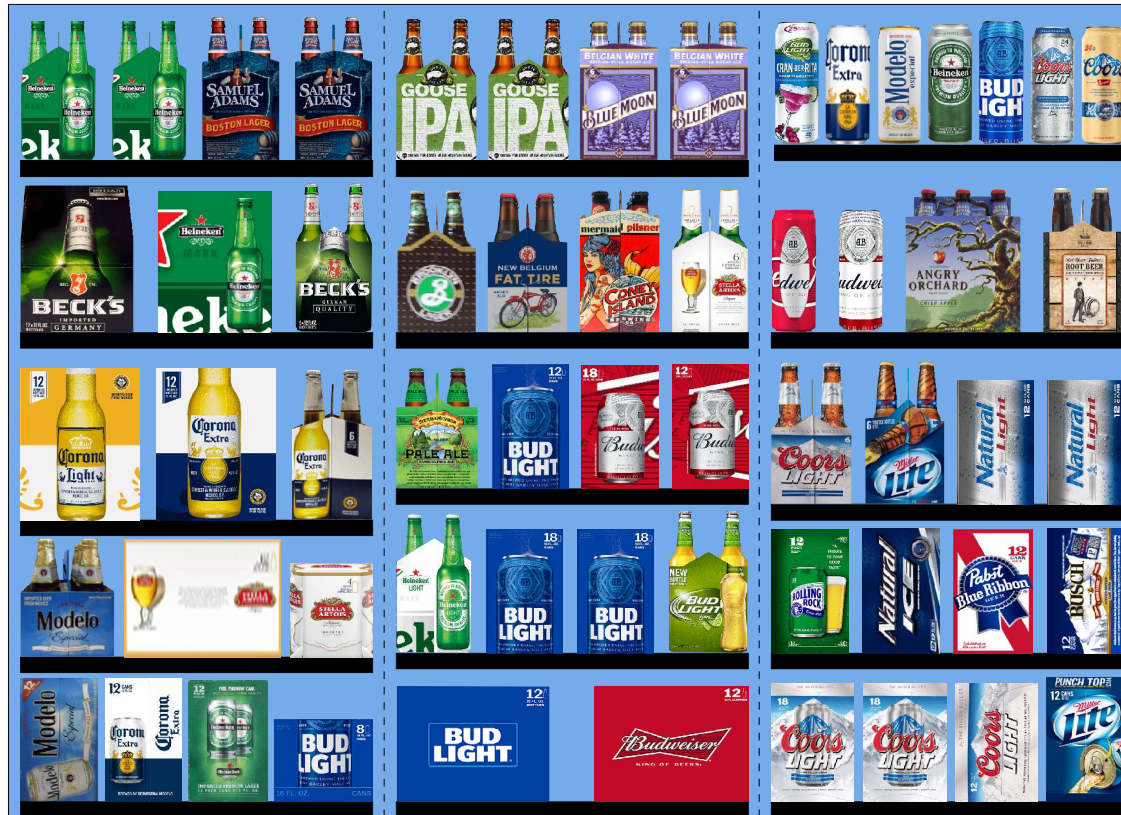


Fan obstruction on the top of the left two doors.
Can only go one deep except singles door



SCHEMATIC BACKING REPORT

10417.psa

Planogram: 10417.psa

Segment #1 : Shelf #5									
DEPTH: 22 in WIDTH: 23 in DISTANCE FROM TOP OF BASE SHELF TO BOTTOM OF SHELF: 0.00 in									
POS	# FAC	UPC	ID	NAME	CASES	CAPACITY	UNITS HIGH	DOS	MVMT
12	1	8066095715	8066095715	Modelo 12/12C	1.0	2	1	3.1	4.6
13	1	8066095695	8066095695	Corona Extra 12/12C	1.0	2	1	5.7	2.5
14	1	7289000020	7289000020	Heineken 12/12C	1.0	2	1	2.4	5.8
15	1	1820008989	1820008989	Bud Light 8/16C	0.7	2	1	0.0	0.0
Segment #1 : Shelf #4									
DEPTH: 22 in WIDTH: 23 in DISTANCE FROM TOP OF BASE SHELF TO BOTTOM OF SHELF: 9.25 in									
POS	# FAC	UPC	ID	NAME	CASES	CAPACITY	UNITS HIGH	DOS	MVMT
9	1	8066095765		Modelo 6/12B	0.5	2	1	0.0	0.0
10	1	78615000014	78615000014	Stella Artois 12/11B	1.0	2	1	5.6	2.5
11	1	1820000506	1820000506	Stella Artois 4/15C	0.7	4	1	0.0	0.0
Segment #1 : Shelf #3									
DEPTH: 22 in WIDTH: 23 in DISTANCE FROM TOP OF BASE SHELF TO BOTTOM OF SHELF: 18.00 in									
POS	# FAC	UPC	ID	NAME	CASES	CAPACITY	UNITS HIGH	DOS	MVMT
6	1	8066095675	8066095675	Corona Light 12/12B	1.0	2	1	8.9	1.6
7	1	8066095615	8066095615	Corona Extra 12/12B	1.0	2	1	3.6	3.9
8	1	8066095605	8066095605	Corona Extra 6/12B	0.5	2	1	3.0	4.7
Segment #1 : Shelf #2									
DEPTH: 22 in WIDTH: 23 in DISTANCE FROM TOP OF BASE SHELF TO BOTTOM OF SHELF: 30.00 in									
POS	# FAC	UPC	ID	NAME	CASES	CAPACITY	UNITS HIGH	DOS	MVMT
3	1	8248812300	8248812300	Becks 12/12B	1.0	2	1	45.5	0.3
4	1	7289000016	7289000016	Heineken 12/12B	1.0	2	1	4.9	2.9
5	1	8248812345	8248812345	Becks 6/12B	0.5	2	1	3.5	4.0
Segment #1 : Shelf #1									
DEPTH: 15 in WIDTH: 23 in DISTANCE FROM TOP OF BASE SHELF TO BOTTOM OF SHELF: 41.00 in									
POS	# FAC	UPC	ID	NAME	CASES	CAPACITY	UNITS HIGH	DOS	MVMT
1	2	7289000011	7289000011	Heineken 6/12B	1.0	4	1	10.3	2.7
2	2	8769210012	8769210012	Samuel Adams Boston Lgr 6/12B	1.0	4	1	9.8	2.8
Segment #2 : Shelf #5									
DEPTH: 22 in WIDTH: 23 in DISTANCE FROM TOP OF BASE SHELF TO BOTTOM OF SHELF: 0.00 in									
POS	# FAC	UPC	ID	NAME	CASES	CAPACITY	UNITS HIGH	DOS	MVMT
29	1	1820000769	1820000769	Bud Light 12/12B	1.0	2	1	4.9	2.8
30	1	1820000771		Budweiser 12/12B	1.0	2	1	6.6	2.1
Segment #2 : Shelf #4									
DEPTH: 22 in WIDTH: 23 in DISTANCE FROM TOP OF BASE SHELF TO BOTTOM OF SHELF: 9.50 in									
POS	# FAC	UPC	ID	NAME	CASES	CAPACITY	UNITS HIGH	DOS	MVMT
26	1	7289000158		Heineken Premium Light 6/12B	0.8	3	1	162.8	0.1
27	2	1820053218	1820053218	Bud Light 18/12C	2.0	2	1	466.7	0.0
28	1	1820014991		Bud Light Lime 6/12B	0.5	2	1	13.0	1.1
Segment #2 : Shelf #3									
DEPTH: 22 in WIDTH: 23 in DISTANCE FROM TOP OF BASE SHELF TO BOTTOM OF SHELF: 20.00 in									
POS	# FAC	UPC	ID	NAME	CASES	CAPACITY	UNITS HIGH	DOS	MVMT
22	1	8378337521		Sierra Nevada Pale Ale 6/12B	0.5	2	1	0.0	0.0
23	1	1820053047	1820053047	Bud Light 12/12C	1.0	2	1	1.5	9.2

SCHEMATIC BACKING REPORT

10417.psa

24	1	1820011218	1820011218	Budweiser 18/12C	1.0	1	1	411.8	0.0
25	1	1820011047	1820011047	Budweiser 12/12C	1.0	2	1	3.3	4.3

Segment #2 : Shelf #2 DEPTH: 22 in WIDTH: 23 in DISTANCE FROM TOP OF BASE SHELF TO BOTTOM OF SHELF: 30.00 in

POS	# FAC	UPC	ID	NAME	CASES	CAPACITY	UNITS HIGH	DOS	MVMT
18	1	3061300001		Brooklyn Lager 6/12B	0.5	2	1	1555.6	0.0
19	1	75452700022	75452700022	New Belgium Fat Tire Amber Ale 6/12B	0.5	2	1	0.0	0.0
20	1	88715100094		Coney Island Mermaid Pilsner 6/12B	0.5	2	1	0.0	0.0
21	1	78615000001	78615000001	Stella Artois 6/11B	0.5	2	1	1.5	9.6

Segment #2 : Shelf #1 DEPTH: 15 in WIDTH: 23 in DISTANCE FROM TOP OF BASE SHELF TO BOTTOM OF SHELF: 41.00 in

POS	# FAC	UPC	ID	NAME	CASES	CAPACITY	UNITS HIGH	DOS	MVMT
16	2	73692011132	73692011132	Goose Island India Pale Ale 6/12B	0.5	2	1	22.5	0.6
17	2	7199009511	7199009511	Blue Moon Belgian White Ale 6/12B	0.5	2	1	2.8	4.9

Segment #3 : Shelf #5 DEPTH: 22 in WIDTH: 23 in DISTANCE FROM TOP OF BASE SHELF TO BOTTOM OF SHELF: 0.00 in

POS	# FAC	UPC	ID	NAME	CASES	CAPACITY	UNITS HIGH	DOS	MVMT
49	2	7199030017	7199030017	Coors Light 18/12C	2.0	2	1	205.9	0.1
50	1	7199000048	7199000048	Coors Light 12/12C	1.0	2	1	2.5	5.6
51	1	3410057636	3410057636	Miller Lite 12/12C	1.0	2	1	4.3	3.2

Segment #3 : Shelf #4 DEPTH: 22 in WIDTH: 23 in DISTANCE FROM TOP OF BASE SHELF TO BOTTOM OF SHELF: 9.50 in

POS	# FAC	UPC	ID	NAME	CASES	CAPACITY	UNITS HIGH	DOS	MVMT
45	1	7143934450	7143934450	Rolling Rock 12/12C	1.0	2	1	1.7	8.2
46	1	1820000964	1820000964	Natural Ice 12/12C	1.0	2	1	3.7	3.8
47	1	2210000170	2210000170	Pabst 12/12C	1.0	2	1	0.0	0.0
48	1	1820061047	1820061047	Busch 12/12C	1.0	2	1	0.0	0.0

Segment #3 : Shelf #3 DEPTH: 22 in WIDTH: 23 in DISTANCE FROM TOP OF BASE SHELF TO BOTTOM OF SHELF: 19.00 in

POS	# FAC	UPC	ID	NAME	CASES	CAPACITY	UNITS HIGH	DOS	MVMT
42	1	7199030005	7199030005	Coors Light 6/12B	0.5	2	1	5.0	2.8
43	1	3410057505		Miller Lite 6/12B	0.5	2	1	9.1	1.5
44	2	1820015047	1820015047	Natural Light 12/12C	2.0	4	1	1.5	18.2

Segment #3 : Shelf #2 DEPTH: 22 in WIDTH: 23 in DISTANCE FROM TOP OF BASE SHELF TO BOTTOM OF SHELF: 30.00 in

POS	# FAC	UPC	ID	NAME	CASES	CAPACITY	UNITS HIGH	DOS	MVMT
38	1	1820021985	1820021985	Budweiser 3/25C	0.4	2	1	0.0	0.0
39	1	1820025000	1820025000	Budweiser 1/25C	0.5	7	1	2.2	22.4
40	1	8769282102	8769282102	Angry Orchard Crisp Apple 6/12B	1.0	4	1	0.0	0.0
41	1	9200002000	9200002000	Small Town Not Your Fathers RtBr 6/12B	0.5	2	1	0.0	0.0

Segment #3 : Shelf #1 DEPTH: 22 in WIDTH: 23 in DISTANCE FROM TOP OF BASE SHELF TO BOTTOM OF SHELF: 42.00 in

POS	# FAC	UPC	ID	NAME	CASES	CAPACITY	UNITS HIGH	DOS	MVMT
31	1	1820096934	1820096934	Bud Light Lime Cran-Ber-Rita 1/25C	0.5	7	1	9.7	5.1
32	1	8066095643	8066095643	Corona Extra 1/24C	0.6	7	1	8.7	5.6
33	1	8066095721	8066095721	Modelo 1/24C	0.6	7	1	0.0	0.0
34	1	7289000119	7289000119	Heineken 1/24C	0.6	7	1	8.2	6.0
35	1	1820025001	1820025001	Bud Light 1/25C	0.5	7	1	2.9	16.9
36	1	7199030065	7199030065	Coors Light 1/24C	0.6	7	1	3.9	12.5
37	1	7199010071	7199010071	Coors 1/24C	0.6	7	1	51.6	0.9

SCHEMATIC BACKING REPORT

10417.psa

SKUs on Planogram: 51

UNALLOCATED ITEMS/OPTIONAL ITEMS

10417.psa

UNALLOCATED SKU REPORT

	UPC	NAME	MVMT	Profit	Sales	Category	Manufacturer
1	341000355	Miller Lite 1/24C	4.469	\$0.00	\$0.00	Premium	MillerCoors
2	63598525884	Mikes Hard Black Cherry Lemonade 1/...	3.538	\$0.00	\$0.00	FMB	Mark Anthony Brands
3	1820095999	Bud Light Lime Lemon-Ade-Rita 1/25C	2.769	\$0.00	\$0.00	FMB	Anheuser-Busch InBev
4	1820025533	Bud Light Lime Mang-O-Rita 1/25C	2.692	\$0.00	\$0.00	FMB	Anheuser-Busch InBev
5	1820025505	Bud Light Lime Straw-Ber-Rita 1/25C	1.769	\$0.00	\$0.00	FMB	Anheuser-Busch InBev
6	63598525882	Mikes Hard Lemonade 1/23.5C	1.324	\$0.00	\$0.00	FMB	Mark Anthony Brands
7	1820025010	Michelob Ultra 1/25C	1.154	\$0.00	\$0.00	Specialty	Anheuser-Busch InBev
8	1820025014	Bud Light Lime-A-Rita 1/25C	1.077	\$0.00	\$0.00	FMB	Anheuser-Busch InBev
9	8066095625	Corona Light 6/12B	0.969	\$0.00	\$0.00	Imports	Crown Imports LLC
10	3410057509	Miller Lite 12/12B	0.957	\$0.00	\$0.00	Premium	MillerCoors
11	7199030069	Coors Light 12/12B	0.856	\$0.00	\$0.00	Premium	MillerCoors
12	1820000834	Budweiser 6/12B	0.679	\$0.00	\$0.00	Premium	Anheuser-Busch InBev
13	1820000833	Bud Light 6/12B	0.524	\$0.00	\$0.00	Premium	Anheuser-Busch InBev
14	1820005990	Michelob Ultra 12/12B	0.462	\$0.00	\$0.00	Specialty	Anheuser-Busch InBev
15	1820020998	Bud Light 8/16AL	0.462	\$0.00	\$0.00	Premium	Anheuser-Busch InBev
16	7089701331	Fosters Lager 1/25C	0.452	\$0.00	\$0.00	Imports	MillerCoors
17	8769200004	Samuel Adams Seasonal Select 6/12B	0.188	\$0.00	\$0.00	Micro	Boston Beer
18	3410057340	Miller Lite 18/12C	0.095	\$0.00	\$0.00	Premium	MillerCoors
19	8248812381	Becks 12/12C	0.077	\$0.00	\$0.00	Imports	Anheuser-Busch InBev
20	7199009532	Blue Moon Seasonal 6/12B	0.035	\$0.00	\$0.00	Specialty	MillerCoors
21	7199031600	Coors Light 24/12C	0.000	\$0.00	\$0.00	Premium	MillerCoors
22	72383000009	Lagunitas IPA 6/12B	0.000	\$0.00	\$0.00	Micro	Micro Breweries
23	8797502650	Sapporo Draft 1/22C	0.000	\$0.00	\$0.00	Imports	Import
24	7199030078	Coors Light 18/12B	0.000	\$0.00	\$0.00	Premium	MillerCoors
25	1820000542	Busch 4/16C	0.000	\$0.00	\$0.00	Sub Premium	Anheuser-Busch InBev
26	8769201103	Samuel Adams Seasonal 12/12B	0.000	\$0.00	\$0.00	Micro	Boston Beer
27	3410001509	Miller High Life 12/12B	0.000	\$0.00	\$0.00	Sub Premium	MillerCoors
28	1820008981	Budweiser 8/16C	0.000	\$0.00	\$0.00	Premium	Anheuser-Busch InBev
29	7289000152	Heineken 18/12B	0.000	\$0.00	\$0.00	Imports	Heineken USA
30	7199030120	Coors Light 3/24C	0.000	\$0.00	\$0.00	Premium	MillerCoors
31	1820025009	Bud Light Lime 1/25C	0.000	\$0.00	\$0.00	Specialty	Anheuser-Busch InBev
32	85375900063	Southern Tier Super Pack 12/12B	0.000	\$0.00	\$0.00	Micro	Micro Breweries
33	8066095757	Modelo 12/12B	0.000	\$0.00	\$0.00	Imports	Crown Imports LLC
34	74052210083	Bell's Two Hearted Ale 6/12B	0.000	\$0.00	\$0.00	Micro	Bell's Brewery
35	1820025008	Natural Ice 1/25C	0.000	\$0.00	\$0.00	Sub Premium	Anheuser-Busch InBev
36	64286090024	Founders All Day IPA 15/12C	0.000	\$0.00	\$0.00	Micro	Micro Breweries
37	7199009516	Blue Moon Belgian White Ale 12/12B	0.000	\$0.00	\$0.00	Specialty	MillerCoors
38	78615000057	Stella Artois 1/22B	0.000	\$0.00	\$0.00	Imports	Anheuser-Busch InBev
39	7143900601	Rolling Rock 1/25C	0.000	\$0.00	\$0.00	Sub Premium	Anheuser-Busch InBev
40	7289000478	Heineken 1/22B	0.000	\$0.00	\$0.00	Imports	Heineken USA
41	63848900029	Dogfish Head 60 Minute IPA 6/12B	0.000	\$0.00	\$0.00	Micro	Micro Breweries
42	1820000063	Busch 6/16C	0.000	\$0.00	\$0.00	Sub Premium	Anheuser-Busch InBev
43	3061300071	Brooklyn Variety Pack 12/12B	0.000	\$0.00	\$0.00	Micro	Micro Breweries
44	1820025028	Becks 1/25C	0.000	\$0.00	\$0.00	Imports	Anheuser-Busch InBev
45	3410000323	Redd's Wicked Apple 1/24C	0.000	\$0.00	\$0.00	Specialty	MillerCoors
46	78615000036	Hoegaarden 6/11B	0.000	\$0.00	\$0.00	Imports	Anheuser-Busch InBev
47	7089718331	Fosters Premium Ale 1/25C	0.000	\$0.00	\$0.00	Imports	MillerCoors
48	1820025531	Bud Light Lime Raz-Ber-Rita 1/25C	0.000	\$0.00	\$0.00	FMB	Anheuser-Busch InBev
49	8992427896	Yuengling Traditional Lager 12/12B	0.000	\$0.00	\$0.00	Premium	DG Yuengling & Sons
50	8066095755	Modelo 6/12C	0.000	\$0.00	\$0.00	Imports	Crown Imports LLC
51	1820025002	Natural Light 1/25C	0.000	\$0.00	\$0.00	Sub Premium	Anheuser-Busch InBev
52	8769230050	Samuel Adams Seasonal 6/12B	0.000	\$0.00	\$0.00	Micro	Boston Beer
53	8769200033	Angry Orchard Crisp Apple 12/12B	0.000	\$0.00	\$0.00	Cider	Boston Beer
54	18195400002	Peroni Nastro Azzuro 6/12B	0.000	\$0.00	\$0.00	Imports	MillerCoors
55	8769283231	Twisted Tea 1/24C	0.000	\$0.00	\$0.00	FMB	Boston Beer
56	8992427891	Yuengling Traditional Lager 6/12B	0.000	\$0.00	\$0.00	Premium	DG Yuengling & Sons
57	3061300019	Brooklyn East India Pale Ale 6/12B	0.000	\$0.00	\$0.00	Micro	Micro Breweries
58	3061300031	Brooklyn Lager 12/12B	0.000	\$0.00	\$0.00	Micro	Micro Breweries
59	8066095641	Corona Extra 1/24B	0.000	\$0.00	\$0.00	Imports	Crown Imports LLC
60	7289000529	Heineken 12/8.5C	0.000	\$0.00	\$0.00	Imports	Heineken USA
61	8769200149	Angry Orchard Green Apple 6/12B	0.000	\$0.00	\$0.00	Cider	Boston Beer
62	78615000030	Lefe Blonde 6/11B	0.000	\$0.00	\$0.00	Imports	Anheuser-Busch InBev
63	3061300053	Brooklyn Seasonal 6/12B	0.000	\$0.00	\$0.00	Micro	Micro Breweries

UNALLOCATED ITEMS/OPTIONAL ITEMS

10417.psa

UNALLOCATED SKU REPORT

	UPC	NAME	MVMT	Profit	Sales	Category	Manufacturer
64	7289000159	Heineken Premium Light 12/12B	0.000	\$0.00	\$0.00	Imports	Heineken USA
65	72383000020	Lagunitas A Little Sumpin Sumpin 6/12B	0.000	\$0.00	\$0.00	Micro	Micro Breweries
66	8769200127	Samuel Adams Rebel IPA 6/12B	0.000	\$0.00	\$0.00	Micro	Boston Beer
67	4182700076	Harpoon IPA 6/12B	0.000	\$0.00	\$0.00	Micro	Harpoon
68	8066095785	Negra Modelo 6/12B	0.000	\$0.00	\$0.00	Imports	Crown Imports LLC
69	85909300243	SixPoint Bengali 6/12C	0.000	\$0.00	\$0.00	Micro	Micro Breweries
70	3410031602	Milwaukee's Best 12/12C	0.000	\$0.00	\$0.00	Sub Premium	MillerCoors
71	8248800006	Becks 1/22B	0.000	\$0.00	\$0.00	Imports	Anheuser-Busch InBev
72	7289010011	Amstel Light 6/12B	0.000	\$0.00	\$0.00	Imports	Heineken USA
73	7199047712	Keystone Ice 1/24C	0.000	\$0.00	\$0.00	Sub Premium	MillerCoors
74	1820011308	Budweiser 18/12B	0.000	\$0.00	\$0.00	Premium	Anheuser-Busch InBev
75	8382012393	Guinness Extra Stout 6/11B	0.000	\$0.00	\$0.00	Imports	Diageo
76	63625177612	Stone IPA 6/12B	0.000	\$0.00	\$0.00	Micro	Micro Breweries
77	4182790036	Harpoon UFO White 6/12B	0.000	\$0.00	\$0.00	Micro	Harpoon
78	8378333100	Sierra Nevada Torpedo Extra IPA 6/12B	0.000	\$0.00	\$0.00	Micro	Sierra Nevada
79	8378322822	Sierra Nevada Seasonal 6/12B	0.000	\$0.00	\$0.00	Micro	Sierra Nevada
80	78624311990	Flying Dog Raging Btch Belgn Ale 6/12B	0.000	\$0.00	\$0.00	Micro	Micro Breweries
81	73692011118	Goose Island Seasonal 6/12B	0.000	\$0.00	\$0.00	Micro	Anheuser-Busch InBev
82	7199009513	Blue Moon Belgian White Ale 1/22B	0.000	\$0.00	\$0.00	Specialty	MillerCoors
83	7199030104	Coors Light 9/16AL	0.000	\$0.00	\$0.00	Premium	MillerCoors
84	88715100213	Coney Island Hard Root Beer 6/12B	0.000	\$0.00	\$0.00	Micro	Boston Beer
85	7199048004	Keystone Light 12/12C	0.000	\$0.00	\$0.00	Sub Premium	MillerCoors
86	1820024008	Stella Artois Gft Pk 1/25B	0.000	\$0.00	\$0.00	Imports	Anheuser-Busch InBev
87	1820013986	Shock Top Belgian White Ale 6/12B	0.000	\$0.00	\$0.00	Specialty	Anheuser-Busch InBev
88	78036960806	Peak Organic IPA 6/12B	0.000	\$0.00	\$0.00	Micro	Micro Breweries
89	4182700146	Harpoon Seasonal 6/12B	0.000	\$0.00	\$0.00	Micro	Harpoon
90	79837312602	Magic Hat #9 6/12B	0.000	\$0.00	\$0.00	Micro	North American Breweri...
91	8857333101	Shiner Bock 6/12B	0.000	\$0.00	\$0.00	Micro	Gambrinus
92	81760601020	Captain Lawrence IPA 6/12B	0.000	\$0.00	\$0.00	Micro	Micro Breweries
93	68174511112	Blue Point Toasted Lager 6/12B	0.000	\$0.00	\$0.00	Micro	Anheuser-Busch InBev
94	7231163012	Dos Equis Lager 6/12B	0.000	\$0.00	\$0.00	Imports	Heineken USA
95	68174511102	Blue Point Hoptical Illusion 6/12B	0.000	\$0.00	\$0.00	Micro	Anheuser-Busch InBev
96	8248812377	Becks 4/16C	0.000	\$0.00	\$0.00	Imports	Anheuser-Busch InBev
97	8769229103	Samuel Adams Ssnl Variety-Mix Pk 12/...	0.000	\$0.00	\$0.00	Micro	Boston Beer
98	8248812700	Becks NA 6/12B	0.000	\$0.00	\$0.00	Non Alcohol	Anheuser-Busch InBev
99	73692011182	Goose Island 312 Urban Wheat Ale 6/1...	0.000	\$0.00	\$0.00	Micro	Anheuser-Busch InBev
100	85909300242	SixPoint Sweet Action 6/12C	0.000	\$0.00	\$0.00	Micro	Micro Breweries
101	7231132124	Dos Equis Lager 1/24C	0.000	\$0.00	\$0.00	Imports	Heineken USA
102	3061300016	Brooklyn Pilsner 6/12B	0.000	\$0.00	\$0.00	Micro	Micro Breweries
103	7199048024	Keystone Light 1/24C	0.000	\$0.00	\$0.00	Sub Premium	MillerCoors
104	1820018993	Bud Light Platinum 6/12B	0.000	\$0.00	\$0.00	Specialty	Anheuser-Busch InBev
105	8382056793	Red Stripe 6/12B	0.000	\$0.00	\$0.00	Imports	Diageo
106	68174511118	Blue Point Seasonal 6/12B	0.000	\$0.00	\$0.00	Micro	Anheuser-Busch InBev
107	72383000004	Lagunitas IPA 1/22B	0.000	\$0.00	\$0.00	Micro	Micro Breweries
108	1820014990	Bud Light Lime 12/12B	0.000	\$0.00	\$0.00	Specialty	Anheuser-Busch InBev
109	8378337522	Sierra Nevada Pale Ale 1/24B	0.000	\$0.00	\$0.00	Micro	Sierra Nevada
110	1820024001	Stella Artois Cidre 6/12B	0.000	\$0.00	\$0.00	Cider	Anheuser-Busch InBev
111	8200072385	Smirnoff Ice 6/11B	0.000	\$0.00	\$0.00	FMB	Diageo
112	7199009561	Blue Moon White IPA 6/12B	0.000	\$0.00	\$0.00	Specialty	MillerCoors
113	81760601000	Captain Lawrence Pale Ale 6/12B	0.000	\$0.00	\$0.00	Micro	Micro Breweries
114	7231163001	Pilsner Urquell 6/12B	0.000	\$0.00	\$0.00	Imports	MillerCoors
115	1820000016	Budweiser 6/12C	0.000	\$0.00	\$0.00	Premium	Anheuser-Busch InBev
116	7199009554	Blue Moon Brewmaster's Sampler 12/1...	0.000	\$0.00	\$0.00	Specialty	MillerCoors
117	1820053308	Bud Light 18/12B	0.000	\$0.00	\$0.00	Premium	Anheuser-Busch InBev
118	85909300244	SixPoint The Crisp 6/12C	0.000	\$0.00	\$0.00	Micro	Micro Breweries
119	8769210014	Samuel Adams Boston Lgr 12/12B	0.000	\$0.00	\$0.00	Micro	Boston Beer
120	7289010016	Amstel Light 12/12B	0.000	\$0.00	\$0.00	Imports	Heineken USA
121	8066095301	Pacifico Clara 6/12B	0.000	\$0.00	\$0.00	Imports	Crown Imports LLC
122	8374100005	Grolsch 6/12B	0.000	\$0.00	\$0.00	Imports	MillerCoors
123	72383000011	Lagunitas Pils Czech Style 6/12B	0.000	\$0.00	\$0.00	Micro	Micro Breweries
124	7289000000	Heineken 6/12C	0.000	\$0.00	\$0.00	Imports	Heineken USA
125	63598506744	Mikes Hard Black Cherry Lemonade 6/...	0.000	\$0.00	\$0.00	FMB	Mark Anthony Brands
126	8769200129	Samuel Adams Rebel IPA 12/12B	0.000	\$0.00	\$0.00	Micro	Boston Beer

UNALLOCATED ITEMS/OPTIONAL ITEMS

10417.psa

UNALLOCATED SKU REPORT

	UPC	NAME	MVMT	Profit	Sales	Category	Manufacturer
127	1820018992	Bud Light Platinum 12/12B	0.000	\$0.00	\$0.00	Specialty	Anheuser-Busch InBev
128	7231123012	Dos Equis Lager 12/12B	0.000	\$0.00	\$0.00	Imports	Heineken USA
129	1820000106	Bud Light 6/12C	0.000	\$0.00	\$0.00	Premium	Anheuser-Busch InBev
130	8769210200	Samuel Adams Boston Lgr 1/22B	0.000	\$0.00	\$0.00	Micro	Boston Beer
131	9425400015	Post Road Pumpkin Ale 6/12B	0.000	\$0.00	\$0.00	Micro	Micro Breweries
132	8834510151	Strongbow Gold Hard Cider 6/11B	0.000	\$0.00	\$0.00	Cider	Heineken USA
133	7278300100	Anchor Steam 6/12B	0.000	\$0.00	\$0.00	Micro	Micro Breweries
134	7199009687	Smith & Forge Hard Cider 12/12C	0.000	\$0.00	\$0.00	Cider	MillerCoors
135	1820020993	Bud Light Lime Straw-Ber-Rita 12/8C	0.000	\$0.00	\$0.00	FMB	Anheuser-Busch InBev
136	3410008710	Third Shift Amber Lager 6/12B	0.000	\$0.00	\$0.00	Specialty	MillerCoors
137	7199000008	Coors Light 6/12C	0.000	\$0.00	\$0.00	Premium	MillerCoors
138	1820005989	Michelob Ultra 6/12B	0.000	\$0.00	\$0.00	Specialty	Anheuser-Busch InBev
139	1820015981	Shock Top Belgian White Ale 12/12B	0.000	\$0.00	\$0.00	Specialty	Anheuser-Busch InBev
140	8382012360	Guinness Draught 4/15C	0.000	\$0.00	\$0.00	Imports	Diageo
141	7199009536	Blue Moon Seasonal 12/12B	0.000	\$0.00	\$0.00	Specialty	MillerCoors
142	3410008716	Redd's Apple Ale 6/12B	0.000	\$0.00	\$0.00	Specialty	MillerCoors
143	8066095621	Corona Light 12/12C	0.000	\$0.00	\$0.00	Imports	Crown Imports LLC
144	1497450009	Woodchuck Amber 6/12B	0.000	\$0.00	\$0.00	Cider	Vermont Hard Cider Co...
145	1820017993	Shock Top Seasonal 6/12B	0.000	\$0.00	\$0.00	Specialty	Anheuser-Busch InBev
146	79556300015	Smuttynose Seasonal 6/12B	0.000	\$0.00	\$0.00	Micro	Micro Breweries
147	64286020024	Founders All Day IPA 6/12B	0.000	\$0.00	\$0.00	Micro	Micro Breweries
148	75224514150	Weihenstephaner Hefeweissbier 6/12B	0.000	\$0.00	\$0.00	Imports	Import
149	63598510062	Mikes Hard Lemonade 6/11B	0.000	\$0.00	\$0.00	FMB	Mark Anthony Brands
150	2210000071	Pabst 6/12C	0.000	\$0.00	\$0.00	Sub Premium	Pabst
151	7199070002	George Killian's Irish Red 6/12B	0.000	\$0.00	\$0.00	Specialty	MillerCoors
152	81535101036	Magners Irish Cider 6/12B	0.000	\$0.00	\$0.00	Cider	Import
153	1820000784	O'Doul's 6/12B	0.000	\$0.00	\$0.00	Non Alcohol	Anheuser-Busch InBev
154	76227407131	Bass Pale Ale 6/12B	0.000	\$0.00	\$0.00	Imports	Anheuser-Busch InBev
155	3410008746	Redd's Green Apple 6/12B	0.000	\$0.00	\$0.00	Specialty	MillerCoors
156	8382010401	Guinness Draught 6/11B	0.000	\$0.00	\$0.00	Imports	Diageo
157	1820025538	Bud Light Lime-A-Rita Seasonal 1/25C	0.000	\$0.00	\$0.00	FMB	Anheuser-Busch InBev
158	4257205006	Radeberger Pilsner 6/11B	0.000	\$0.00	\$0.00	Imports	Import
159	1820097007	Bud Light Lime Lemon-Ade-Rita 12/8C	0.000	\$0.00	\$0.00	FMB	Anheuser-Busch InBev
160	7199010020	Coors 18/12C	0.000	\$0.00	\$0.00	Premium	MillerCoors
161	79837312606	Magic Hat Seasonal 6/12B	0.000	\$0.00	\$0.00	Micro	North American Breweri...
162	7143934806	Rolling Rock 6/12B	0.000	\$0.00	\$0.00	Sub Premium	Anheuser-Busch InBev
163	8834510005	Newcastle Brown Ale 6/12B	0.000	\$0.00	\$0.00	Imports	Heineken USA
164	8769227102	Samuel Adams Cherry Wht 6/12B	0.000	\$0.00	\$0.00	Micro	Boston Beer
165	9282400000	Konig Pilsner 4/17C	0.000	\$0.00	\$0.00	Imports	Import
166	8769284102	Angry Orchard Apple Ginger 6/12B	0.000	\$0.00	\$0.00	Cider	Boston Beer
167	1820000031	Natural Light 6/12C	0.000	\$0.00	\$0.00	Sub Premium	Anheuser-Busch InBev
168	1820022989	Bud Light Lime Mang-O-Rita 12/8C	0.000	\$0.00	\$0.00	FMB	Anheuser-Busch InBev
169	8797501350	Sapporo Draft 6/12B	0.000	\$0.00	\$0.00	Imports	Import
170	3410051605	Leinenkugel Seasonal Shandy 6/12B	0.000	\$0.00	\$0.00	Specialty	MillerCoors
171	79556300009	Smuttynose Finest Kind IPA 6/12B	0.000	\$0.00	\$0.00	Micro	Micro Breweries
172	85999600075	Duvel Belgian Ale 1/25B	0.000	\$0.00	\$0.00	Imports	Import
173	1820022992	Bud Light Lime-A-Rita Seasonal 12/8C	0.000	\$0.00	\$0.00	FMB	Anheuser-Busch InBev
174	64286020005	Founders Centennial IPA 6/12B	0.000	\$0.00	\$0.00	Micro	Micro Breweries
175	3410008730	Redd's Strawberry Ale 6/12B	0.000	\$0.00	\$0.00	Specialty	MillerCoors
176	64286020007	Founders Dirty Bastard 6/12B	0.000	\$0.00	\$0.00	Micro	Micro Breweries
177	3410000354	Miller Lite 6/12C	0.000	\$0.00	\$0.00	Premium	MillerCoors
178	1820019987	Bud Light Lime-A-Rita 12/8C	0.000	\$0.00	\$0.00	FMB	Anheuser-Busch InBev
179	1497480009	Woodchuck Granny Smith Dft Cdr 6/12B	0.000	\$0.00	\$0.00	Cider	Vermont Hard Cider Co...
180	8382018132	Guinness Blonde 6/12B	0.000	\$0.00	\$0.00	Imports	Diageo
181	8066095401	Coronita Extra 6/7B	0.000	\$0.00	\$0.00	Imports	Crown Imports LLC
182	1820012982	Land Shark Lager 6/12B	0.000	\$0.00	\$0.00	Specialty	Anheuser-Busch InBev
183	7231163011	Dos Equis Ambar 6/12B	0.000	\$0.00	\$0.00	Imports	Heineken USA
184	8992495432	Yuengling Black & Tan 6/12B	0.000	\$0.00	\$0.00	Premium	DG Yuengling & Sons
185	8378337512	Sierra Nevada Pale Ale 12/12B	0.000	\$0.00	\$0.00	Micro	Sierra Nevada
186	8170600007	Chimay Grande Res A-Blue 1/25B	0.000	\$0.00	\$0.00	Imports	Import
187	64944000004	Ommegang Three Philosophers 1/25B	0.000	\$0.00	\$0.00	Micro	Duvel Moortgat
188	85663200401	Bronx Pale Ale 4/16C	0.000	\$0.00	\$0.00	Micro	Micro Breweries
189	60878252000	Delirium Tremens 1/25B	0.000	\$0.00	\$0.00	Imports	Import

UNALLOCATED ITEMS/OPTIONAL ITEMS

10417.psa

UNALLOCATED SKU REPORT

	UPC	NAME	MVMT	Profit	Sales	Category	Manufacturer
190	81994200003	Oskar Blues Dale's Pale Ale 6/12C	0.000	\$0.00	\$0.00	Micro	Micro Breweries
191	8572510814	Lindemans Fram. Lambic 1/25B	0.000	\$0.00	\$0.00	Imports	Import
192	64944000001	Ommegang Abbey Ale 1/25B	0.000	\$0.00	\$0.00	Micro	Duvel Moortgat
193	8769200079	Angry Orchard Seasonal 6/12B	0.000	\$0.00	\$0.00	Cider	Boston Beer
194	1820022988	Bud Light Lime Raz-Ber-Rita 12/8C	0.000	\$0.00	\$0.00	FMB	Anheuser-Busch InBev
195	88715100195	Coney Island Overpass IPA 6/12B	0.000	\$0.00	\$0.00	Micro	Boston Beer
196	7167084200	Saranac Adirondack Trail Mix 6/12B	0.000	\$0.00	\$0.00	Micro	FX Matt
197	68174511130	Blue Point Blueberry Ale 6/12B	0.000	\$0.00	\$0.00	Micro	Anheuser-Busch InBev
198	64944000003	Ommegang Hennepin 1/25B	0.000	\$0.00	\$0.00	Micro	Duvel Moortgat